



CURRENT STATUS OF CONFIRMED CASES



118



ACT	NSW	NT	QLD	SA	TAS	VIC	WA
4	41	2	11	13	1	35	11



2,891

ACT	NSW	NT	QLD	SA	TAS	VIC	WA
84	1,226	23	478	218	44	514	304

71,068,640

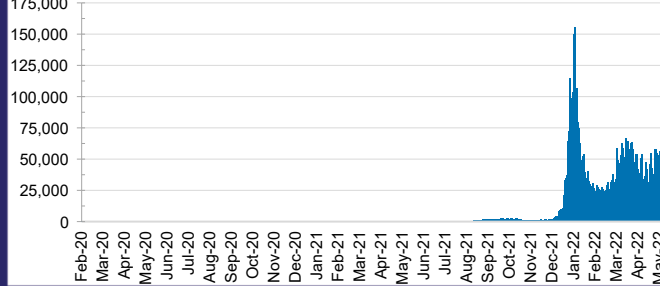


**TOTAL TESTS
REPORTED**

ACT	NSW	NT	QLD
1,106,446	31,643,712	780,202	7,489,119

SA	TAS	VIC	WA
4,789,253	667,425	20,875,884	3,716,599

DAILY NUMBER OF REPORTED CASES

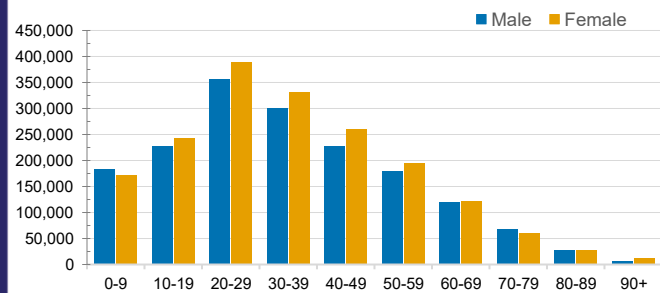


CASES IN AGED CARE SERVICES

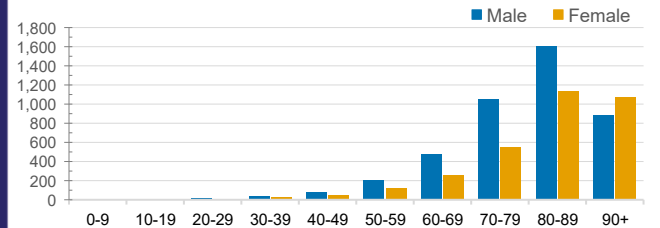
Confirmed Cases	Australia	ACT	NSW	NT	QLD	SA	TAS	VIC	WA
Residential Care Recipients	42975 (2415)	461 (24)	15154 (790)	116 (6)	6935 (290)	3595 (186)	941 (19)	13132 (1012)	2641 (88)
In Home Care Recipients	205 (13)	0	45 (3)	0	15	1	5 (2)	138 (7)	1 (1)

Cases in care recipients (deaths)

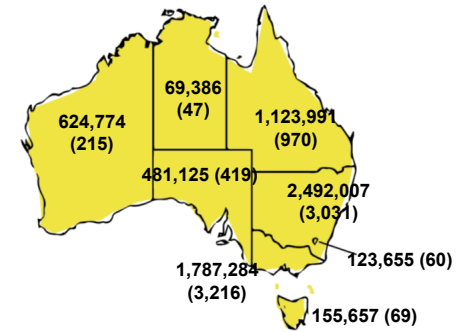
CASES BY AGE GROUP AND SEX



DEATHS BY AGE GROUP AND SEX

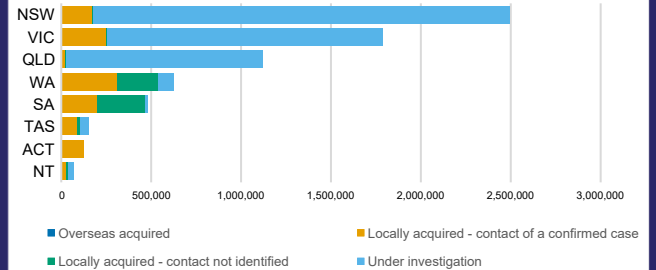


CASES (DEATHS) BY STATE AND TERRITORIES



CASES BY SOURCE OF INFECTION

Australia (% of all confirmed cases)



PUBLIC HEALTH RESPONSE MEASURE

Proportion of total cases under investigation

