



CURRENT STATUS OF CONFIRMED CASES



135

CURRENT CASES
INTENSIVE CARE UNITS (ICU)



ACT	NSW	NT	QLD	SA	TAS	VIC	WA
2	72	1	11	15	2	26	6

3,218

CURRENT CASES
ADMITTED TO HOSPITALS



ACT	NSW	NT	QLD	SA	TAS	VIC	WA
66	1,656	44	453	257	46	456	240

69,477,142

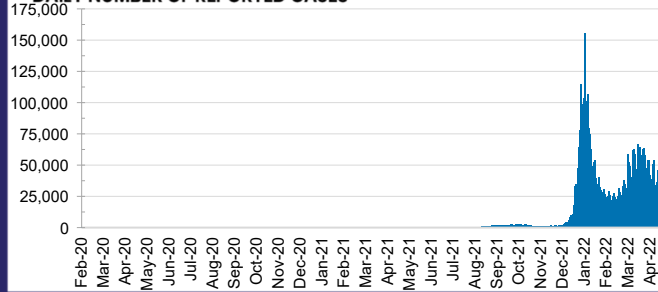
TOTAL TESTS
REPORTED



ACT	NSW	NT	QLD
1,060,431	31,082,643	767,475	7,338,497

SA	TAS	VIC	WA
4,616,895	647,302	20,543,926	3,419,973

DAILY NUMBER OF REPORTED CASES

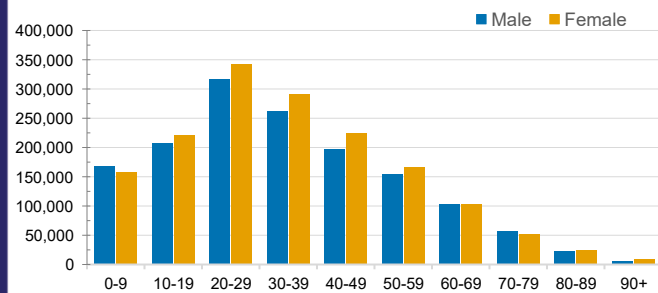


CASES IN AGED CARE SERVICES

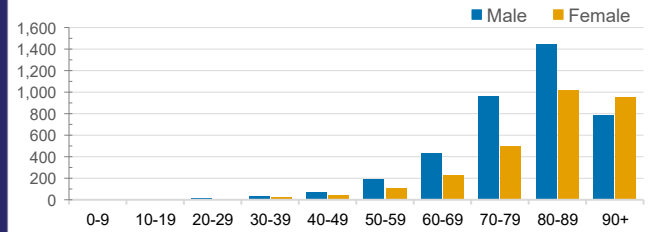
Confirmed Cases	Australia	ACT	NSW	NT	QLD	SA	TAS	VIC	WA
Residential Care Recipients	35262 (2210)	329 (19)	12887 (730)	104 (6)	5893 (271)	2798 (133)	666 (15)	10806 (977)	1779 (59)
In Home Care Recipients	205 (13)	0	45 (3)	0	15	1	5 (2)	138 (7)	1 (1)

Cases in care recipients (deaths)

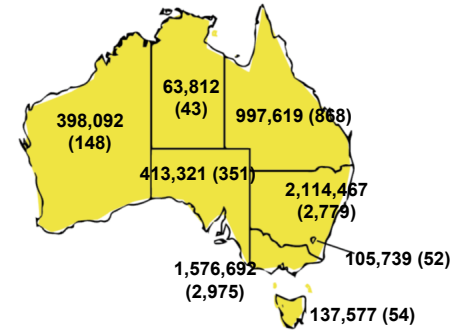
CASES BY AGE GROUP AND SEX



DEATHS BY AGE GROUP AND SEX

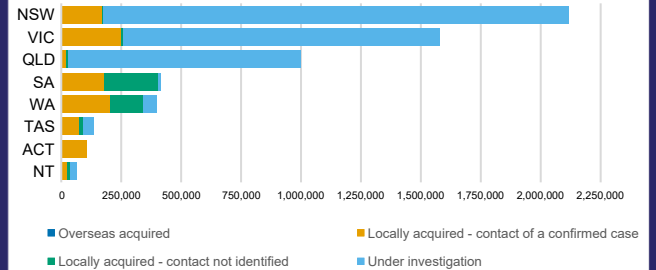


CASES (DEATHS) BY STATE AND TERRITORIES



CASES BY SOURCE OF INFECTION

Australia (% of all confirmed cases)



PUBLIC HEALTH RESPONSE MEASURE

Proportion of total cases under investigation

