



CURRENT STATUS OF CONFIRMED CASES



121



ACT	NSW	NT	QLD	SA	TAS	VIC	WA
4	46	4	12	11	2	32	10



2,986

ACT	NSW	NT	QLD	SA	TAS	VIC	WA
82	1,283	27	493	246	43	512	300

70,972,059

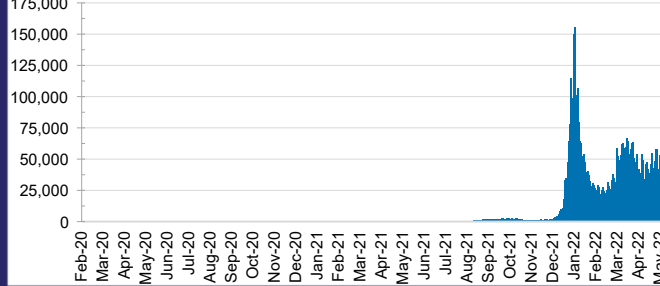


**TOTAL TESTS
REPORTED**

ACT	NSW	NT	QLD
1,103,121	31,611,333	779,920	7,479,625

SA	TAS	VIC	WA
4,777,987	666,066	20,855,191	3,698,816

DAILY NUMBER OF REPORTED CASES

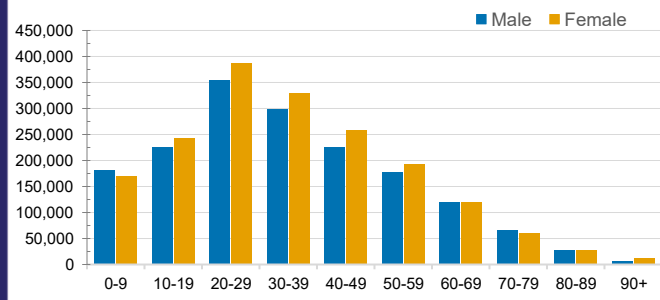


CASES IN AGED CARE SERVICES

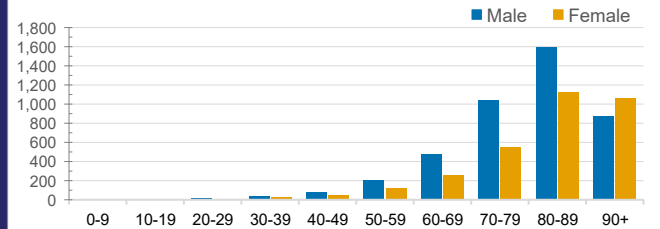
Confirmed Cases	Australia	ACT	NSW	NT	QLD	SA	TAS	VIC	WA
Residential Care Recipients	42384 (2400)	456 (24)	15035 (785)	114 (6)	6888 (288)	3562 (184)	910 (20)	12852 (1008)	2567 (85)
In Home Care Recipients	205 (13)	0	45 (3)	0	15	1	5 (2)	138 (7)	1 (1)

Cases in care recipients (deaths)

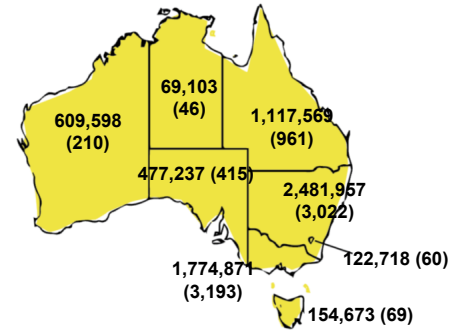
CASES BY AGE GROUP AND SEX



DEATHS BY AGE GROUP AND SEX

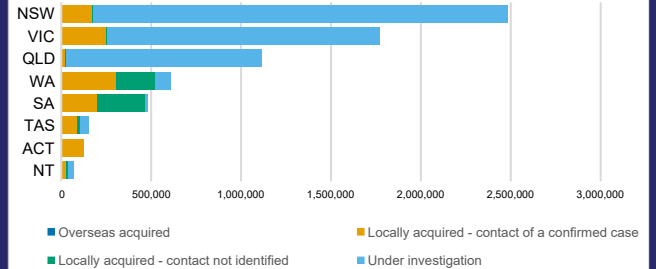


CASES (DEATHS) BY STATE AND TERRITORIES



CASES BY SOURCE OF INFECTION

Australia (% of all confirmed cases)



PUBLIC HEALTH RESPONSE MEASURE

Proportion of total cases under investigation

