



CURRENT STATUS OF CONFIRMED CASES



134



ACT	NSW	NT	QLD	SA	TAS	VIC	WA
4	57	2	16	10	2	31	12

3,134



ACT	NSW	NT	QLD	SA	TAS	VIC	WA
74	1,395	25	511	247	45	510	327

70,863,587

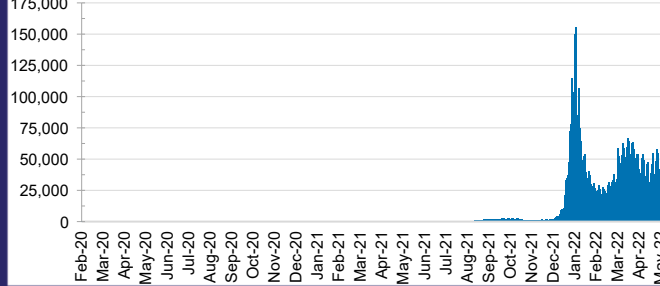


TOTAL TESTS
REPORTED

ACT	NSW	NT	QLD
1,100,545	31,572,392	778,589	7,467,988

SA	TAS	VIC	WA
4,765,923	664,930	20,834,403	3,678,817

DAILY NUMBER OF REPORTED CASES

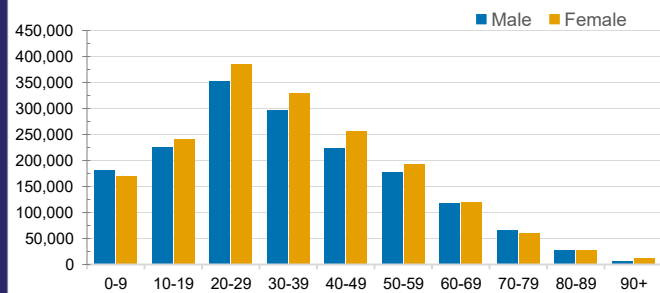


CASES IN AGED CARE SERVICES

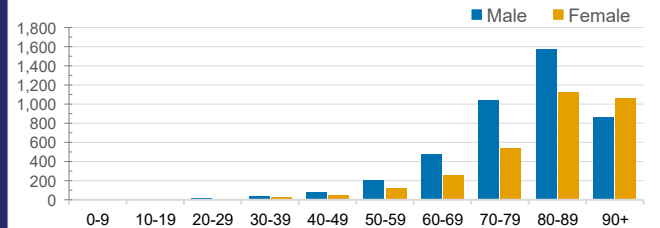
Confirmed Cases	Australia	ACT	NSW	NT	QLD	SA	TAS	VIC	WA
Residential Care Recipients	41828 (2390)	450 (24)	14868 (779)	113 (6)	6791 (288)	3520 (183)	884 (19)	12705 (1006)	2497 (85)
In Home Care Recipients	205 (13)	0	45 (3)	0	15	1	5 (2)	138 (7)	1 (1)

Cases in care recipients (deaths)

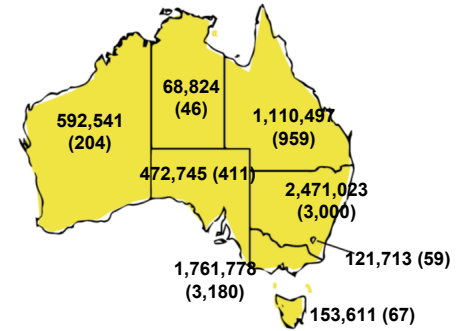
CASES BY AGE GROUP AND SEX



DEATHS BY AGE GROUP AND SEX

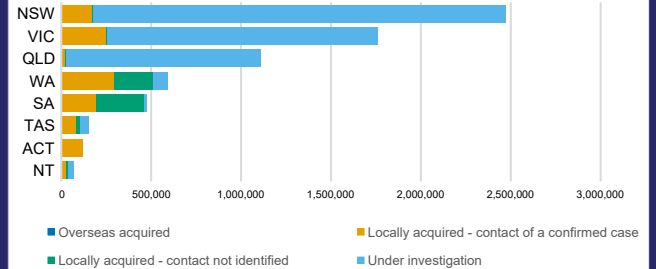


CASES (DEATHS) BY STATE AND TERRITORIES



CASES BY SOURCE OF INFECTION

Australia (% of all confirmed cases)



PUBLIC HEALTH RESPONSE MEASURE

Proportion of total cases under investigation

