



CURRENT STATUS OF CONFIRMED CASES



123



| ACT | NSW | NT | QLD | SA | TAS | VIC | WA |
|-----|-----|----|-----|----|-----|-----|----|
| 4 | 60 | 0 | 11 | 10 | 1 | 25 | 12 |



| ACT | NSW | NT | QLD | SA | TAS | VIC | WA |
|-----|-------|----|-----|-----|-----|-----|-----|
| 74 | 1,398 | 16 | 407 | 229 | 39 | 491 | 279 |

70,433,292

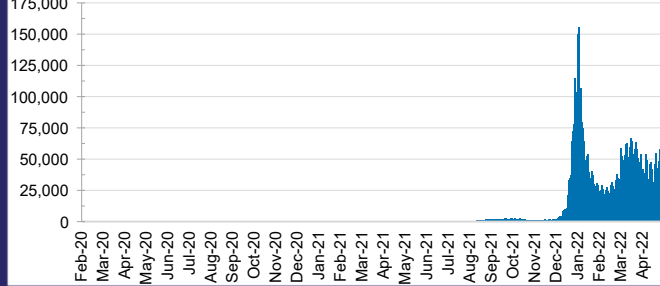


**TOTAL TESTS
REPORTED**

| ACT | NSW | NT | QLD |
|-----------|------------|---------|-----------|
| 1,088,553 | 31,428,338 | 774,629 | 7,430,386 |

| SA | TAS | VIC | WA |
|-----------|---------|------------|-----------|
| 4,716,578 | 659,415 | 20,742,607 | 3,592,786 |

DAILY NUMBER OF REPORTED CASES

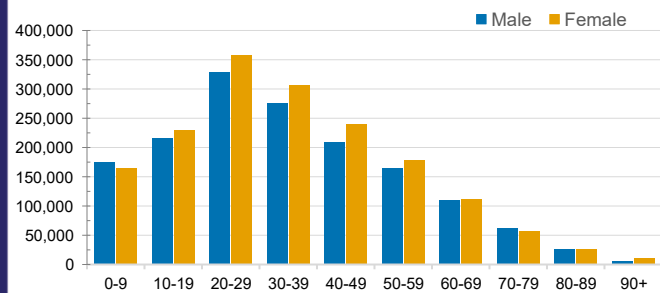


CASES IN AGED CARE SERVICES

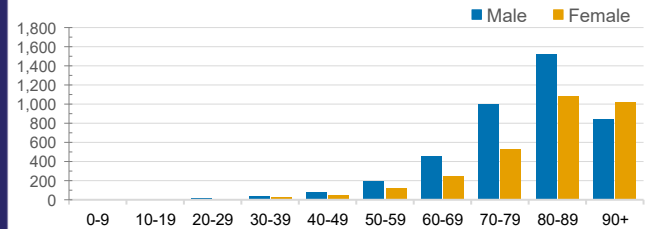
| Confirmed Cases | Australia | ACT | NSW | NT | QLD | SA | TAS | VIC | WA |
|-----------------------------|--------------|----------|-------------|---------|------------|------------|----------|-------------|-----------|
| Residential Care Recipients | 39780 (2335) | 416 (21) | 14222 (762) | 112 (6) | 6551 (283) | 3327 (169) | 798 (16) | 12126 (999) | 2228 (79) |
| In Home Care Recipients | 205 (13) | 0 | 45 (3) | 0 | 15 | 1 | 5 (2) | 138 (7) | 1 (1) |

Cases in care recipients (deaths)

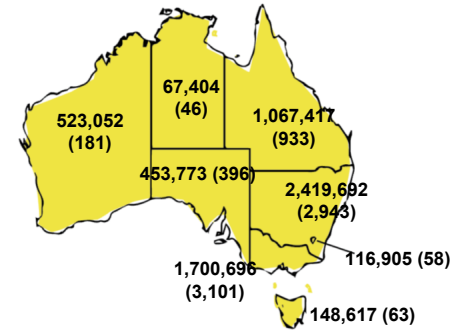
CASES BY AGE GROUP AND SEX



DEATHS BY AGE GROUP AND SEX

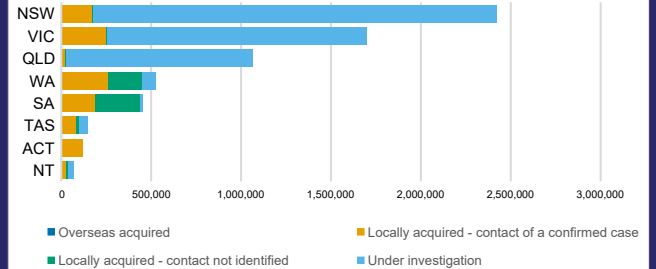


CASES (DEATHS) BY STATE AND TERRITORIES



CASES BY SOURCE OF INFECTION

Australia (% of all confirmed cases)



PUBLIC HEALTH RESPONSE MEASURE

Proportion of total cases under investigation

