



**CURRENT STATUS OF CONFIRMED CASES**



**154**



ACT	NSW	NT	QLD	SA	TAS	VIC	WA
3	75	1	14	16	3	35	7

**3,090**



ACT	NSW	NT	QLD	SA	TAS	VIC	WA
69	1,604	50	446	229	43	428	221

**69,369,287**

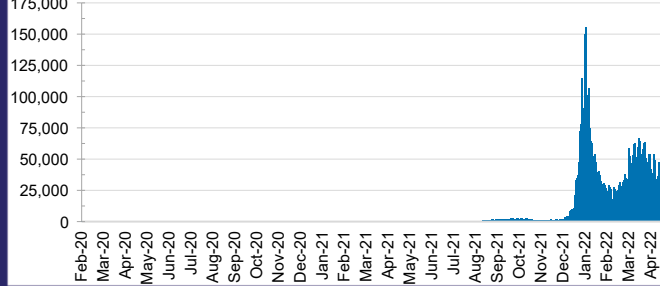


**TOTAL TESTS  
REPORTED**

ACT	NSW	NT	QLD
1,058,736	31,059,819	767,095	7,333,768

SA	TAS	VIC	WA
4,609,567	646,486	20,500,080	3,393,736

**DAILY NUMBER OF REPORTED CASES**

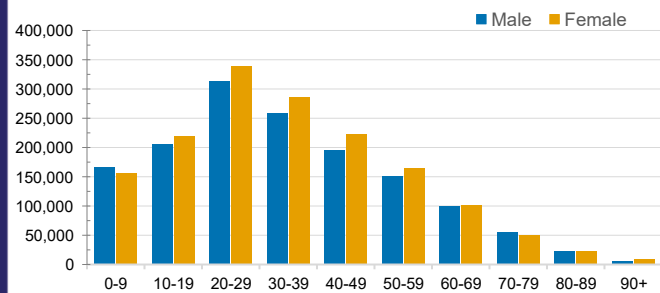


**CASES IN AGED CARE SERVICES**

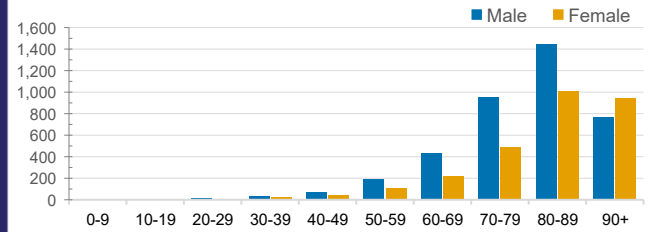
Confirmed Cases	Australia	ACT	NSW	NT	QLD	SA	TAS	VIC	WA
Residential Care Recipients	34365 (2181)	291 (18)	12701 (729)	104 (5)	5849 (269)	2645 (127)	617 (14)	10492 (966)	1666 (53)
In Home Care Recipients	205 (13)	0	45 (3)	0	15	1	5 (2)	138 (7)	1 (1)

Cases in care recipients (deaths)

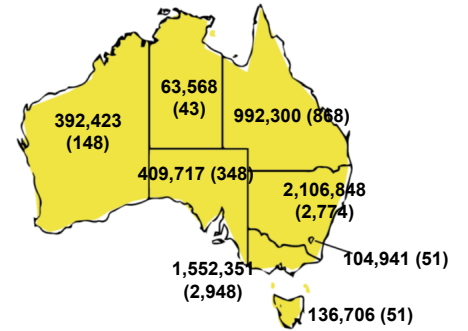
**CASES BY AGE GROUP AND SEX**



**DEATHS BY AGE GROUP AND SEX**

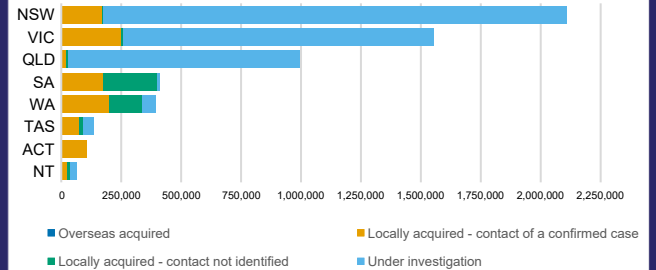


**CASES (DEATHS) BY STATE AND TERRITORIES**



**CASES BY SOURCE OF INFECTION**

Australia (% of all confirmed cases)



**PUBLIC HEALTH RESPONSE MEASURE**

Proportion of total cases under investigation

