

AN-ACC Shadow Assessment Dashboard



816 Residential Aged Care Providers

2,706 Residential Aged Care Facilities

Number of Residents in Aged Care

~184,000

Number of Residents with an AN-ACC Classification

159,200

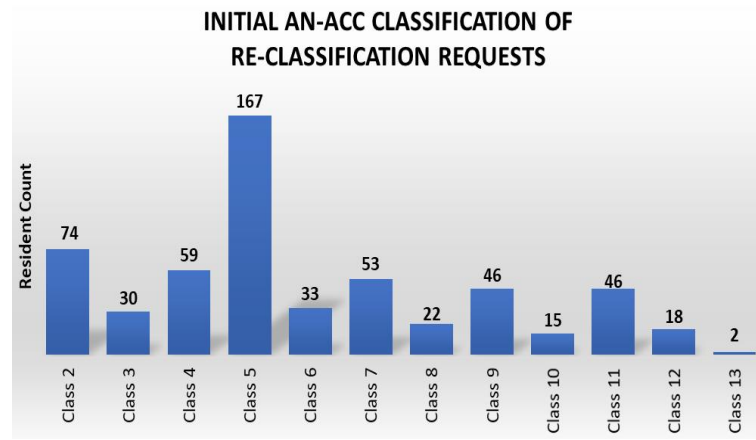
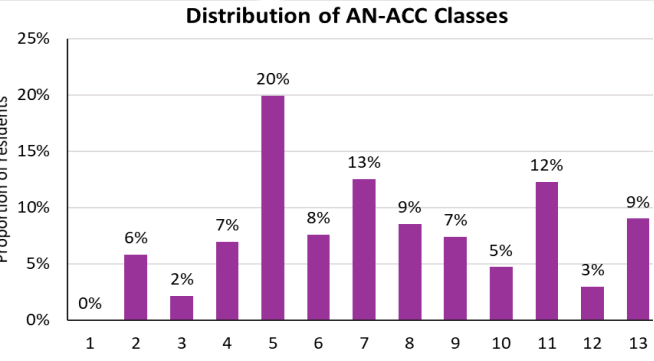
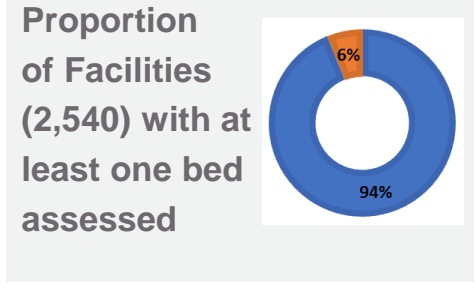
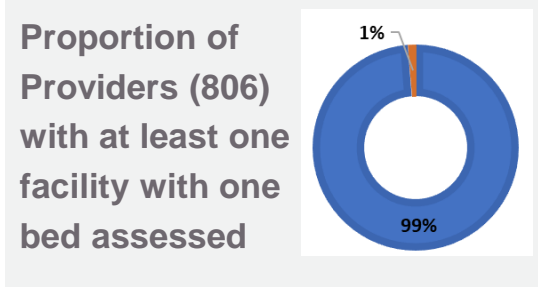
~ Number of Residents to be AN-ACC Assessed

24,800

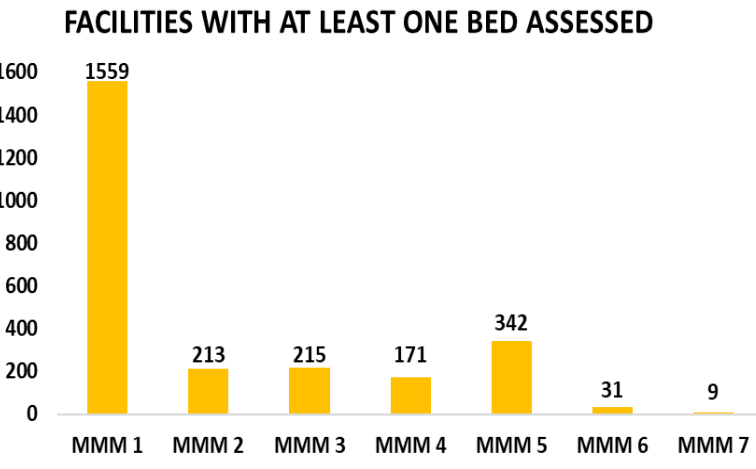
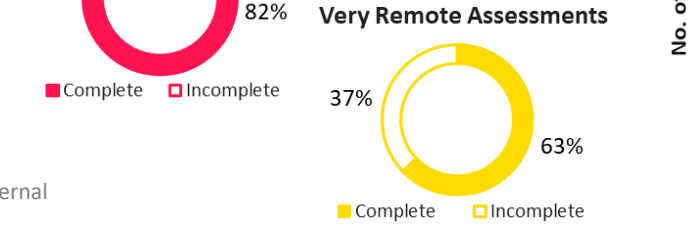
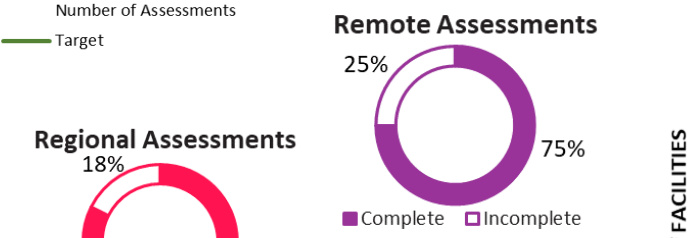
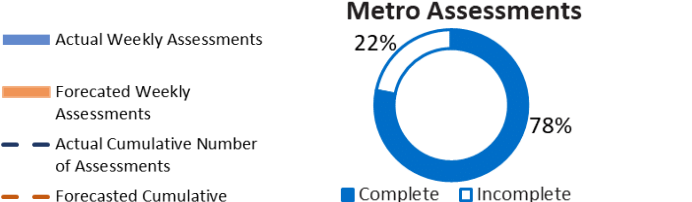
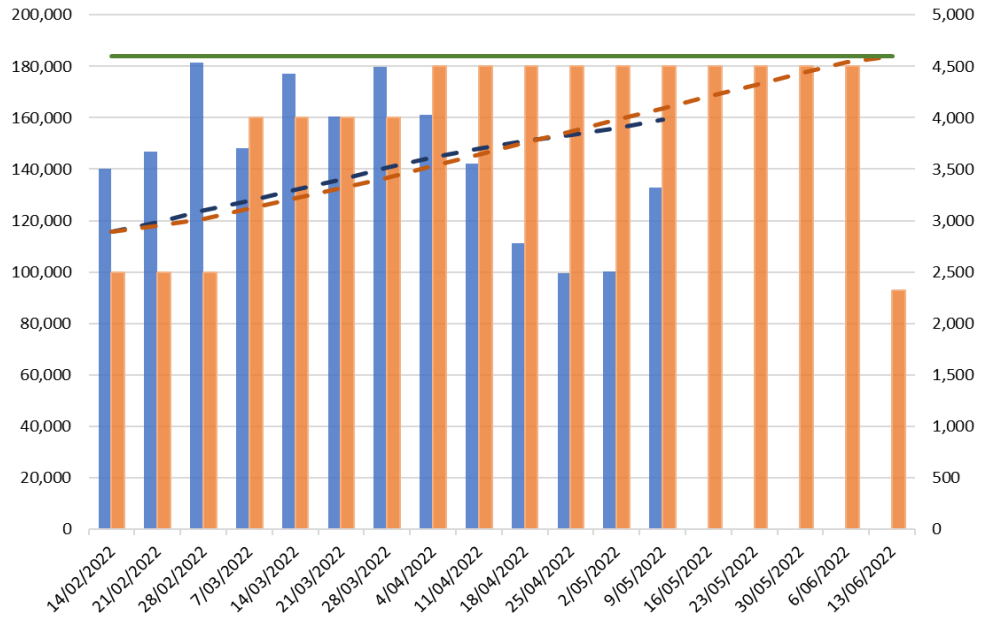
Last updated 6 May 2022

Re-Classification Requests since 29 March 2022

565



Estimated Month of Completion: June 2022



This chart provides an indicative view of how AN-ACC shadow assessments will progress overtime. External factors may impact the expected completion timeframes completion