



**Australian Government**  
**Operation COVID Shield**

# COVID-19 Vaccine Roll-out Jurisdictional Breakdowns

01 April 2022

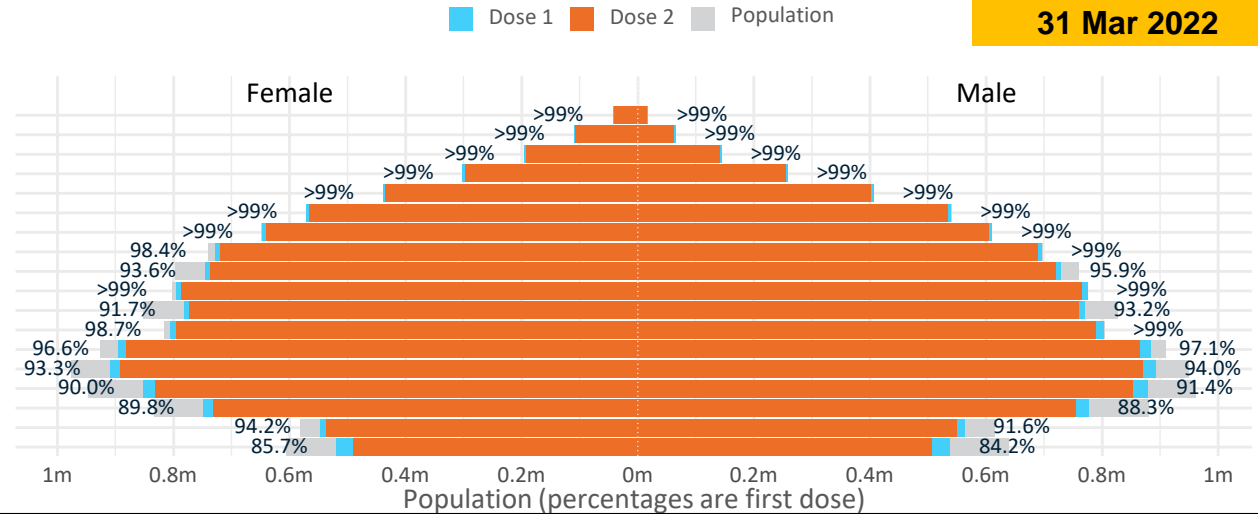
# Doses by age and sex

First and second doses by age and sex

Data as at:  
31 Mar 2022

	16+	50+	12-15	5-11
Dose 1	96.81% (19,962,723 doses / 20,619,959 people)	>99% (8,825,006 doses / 8,749,703 people)	84.96% (1,056,913 doses / 1,243,990 people)	52.30% (1,190,657 doses / 2,276,638 people)
Dose 2	95.15% (19,618,907 doses / 20,619,959 people)	>99% (8,715,278 doses / 8,749,703 people)	80.08% (996,234 doses / 1,243,990 people)	27.47% (625,311 doses / 2,276,638 people)

Age	Dose 1	Dose 2
95+	60,390 (>99%)	56,995 (>99%)
90-94	174,997 (>99%)	169,224 (>99%)
85-89	340,663 (>99%)	333,454 (>99%)
80-84	559,732 (>99%)	552,166 (>99%)
75-79	845,653 (>99%)	837,015 (>99%)
70-74	1,112,025 (>99%)	1,100,871 (>99%)
65-69	1,259,271 (>99%)	1,244,783 (98.9%)
60-64	1,425,854 (>99%)	1,409,276 (98.1%)
55-59	1,475,265 (94.8%)	1,458,198 (93.7%)
50-54	1,571,156 (>99%)	1,553,296 (>99%)
45-49	1,552,114 (92.6%)	1,532,373 (91.4%)
40-44	1,611,010 (>99%)	1,585,692 (97.9%)
35-39	1,782,907 (97.2%)	1,749,708 (95.4%)
30-34	1,809,750 (94.1%)	1,766,954 (91.9%)
25-29	1,739,692 (91.2%)	1,691,658 (88.7%)
20-24	1,531,435 (89.4%)	1,491,598 (87.1%)
16-19	1,110,809 (92.9%)	1,085,646 (90.8%)
12-15	1,056,913 (85.0%)	996,234 (80.1%)



	AUS	ACT	NSW	NT	QLD	SA	TAS	VIC	WA
16 and over - dose 1	19,962,723	351,604	6,304,853	174,321	3,843,672	1,370,256	443,500	5,144,078	2,085,208
16 and over - dose 2	19,618,907	346,187	6,209,990	169,511	3,774,623	1,339,202	433,999	5,067,961	2,048,715
16 and over - population	20,619,959*	344,037	6,565,651	190,571	4,112,707	1,440,400	440,172	5,407,574	2,114,978
16 and over % with dose 1	96.81%	>99%	96.03%	91.47%	93.46%	95.13%	>99%	95.13%	98.59%
16 and over % with dose 2	95.15%	>99%	94.58%	88.95%	91.78%	92.97%	98.60%	93.72%	96.87%
5 to 11 - dose 1	1,190,657	31,783	354,416	13,137	208,044	83,913	28,691	324,456	138,776
5 to 11 - dose 2	625,311	21,423	192,854	5,995	109,347	45,010	18,720	167,833	61,271
5 to 11 - population	2,276,638	39,789	716,460	24,750	478,731	148,816	45,033	578,499	244,154
5 to 11 % with dose 1	52.30%	79.88%	49.47%	53.08%	43.46%	56.39%	63.71%	56.09%	56.84%
5 to 11 % with dose 2	27.47%	53.84%	26.92%	24.22%	22.84%	30.25%	41.57%	29.01%	25.10%
12 to 15 - dose 1	1,056,913	20,102	325,747	10,912	207,583	68,518	22,925	276,217	115,675
12 to 15 - dose 2	996,234	19,445	310,306	9,778	193,636	64,602	21,720	263,193	105,517
12 to 15 - population	1,243,990	19,693	390,330	13,060	270,146	82,747	26,308	308,611	132,869
12 to 15 % with dose 1	84.96%	>99%	83.45%	83.55%	76.84%	82.80%	87.14%	89.50%	87.06%
12 to 15 % with dose 2	80.08%	98.74%	79.50%	74.87%	71.68%	78.07%	82.56%	85.28%	79.41%

\*National population will not equal sum of listed jurisdictions due to a small number of people counted in national population residing in some 'other' territories. Sum of state doses will not add to national total as some records are unable to be geocoded to a State or Territory. Doses sourced from Australian Immunisation Register, population from ABS ERP June 2020

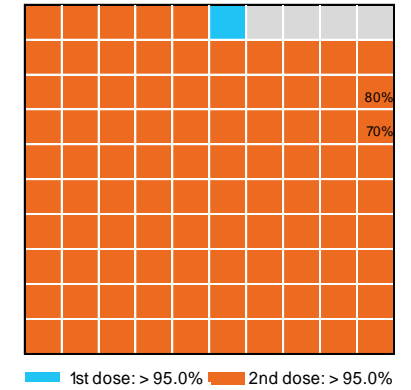
# Vaccinations by State – National Summary

Data as at:  
31 Mar 2022

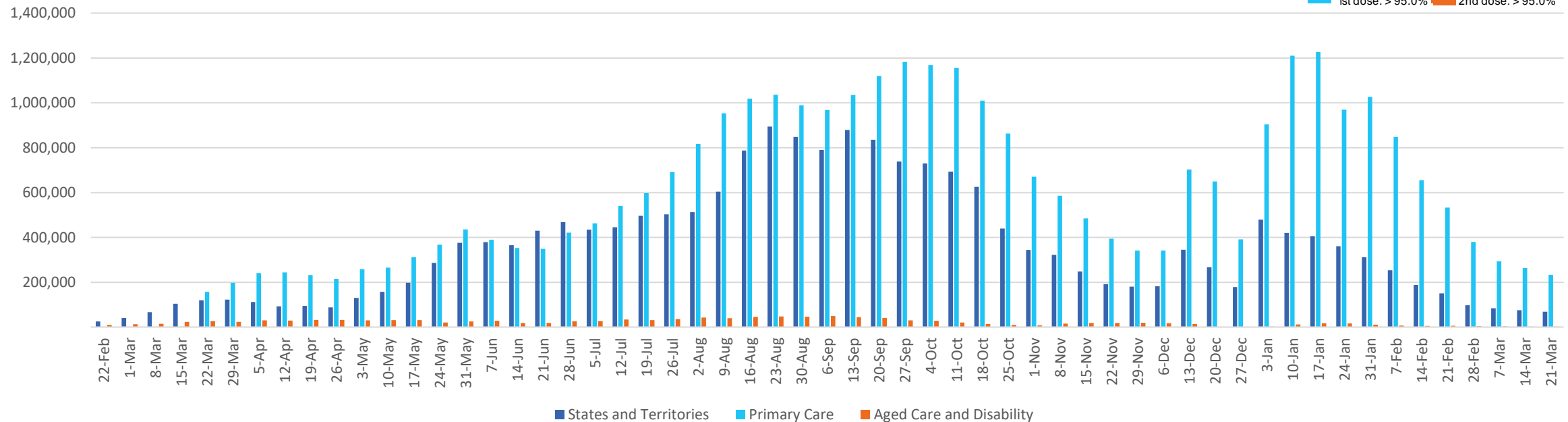
Past 7 days

	25/03/2022	26/03/2022	27/03/2022	28/03/2022	29/03/2022	30/03/2022	31/03/2022	7 day total
State and Territory	20,023	27,354	17,695	15,651	12,455	13,677	14,376	121,231
Aged Care and Disability	259	481	481	367	425	844	481	3,338
Primary Care	66,244	32,987	12,241	57,413	52,975	48,095	47,186	317,141
Total (rounded)	87 K	61 K	30 K	73 K	66 K	63 K	62 K	442 K

Eligible population by % coverage



## Doses administered by channel

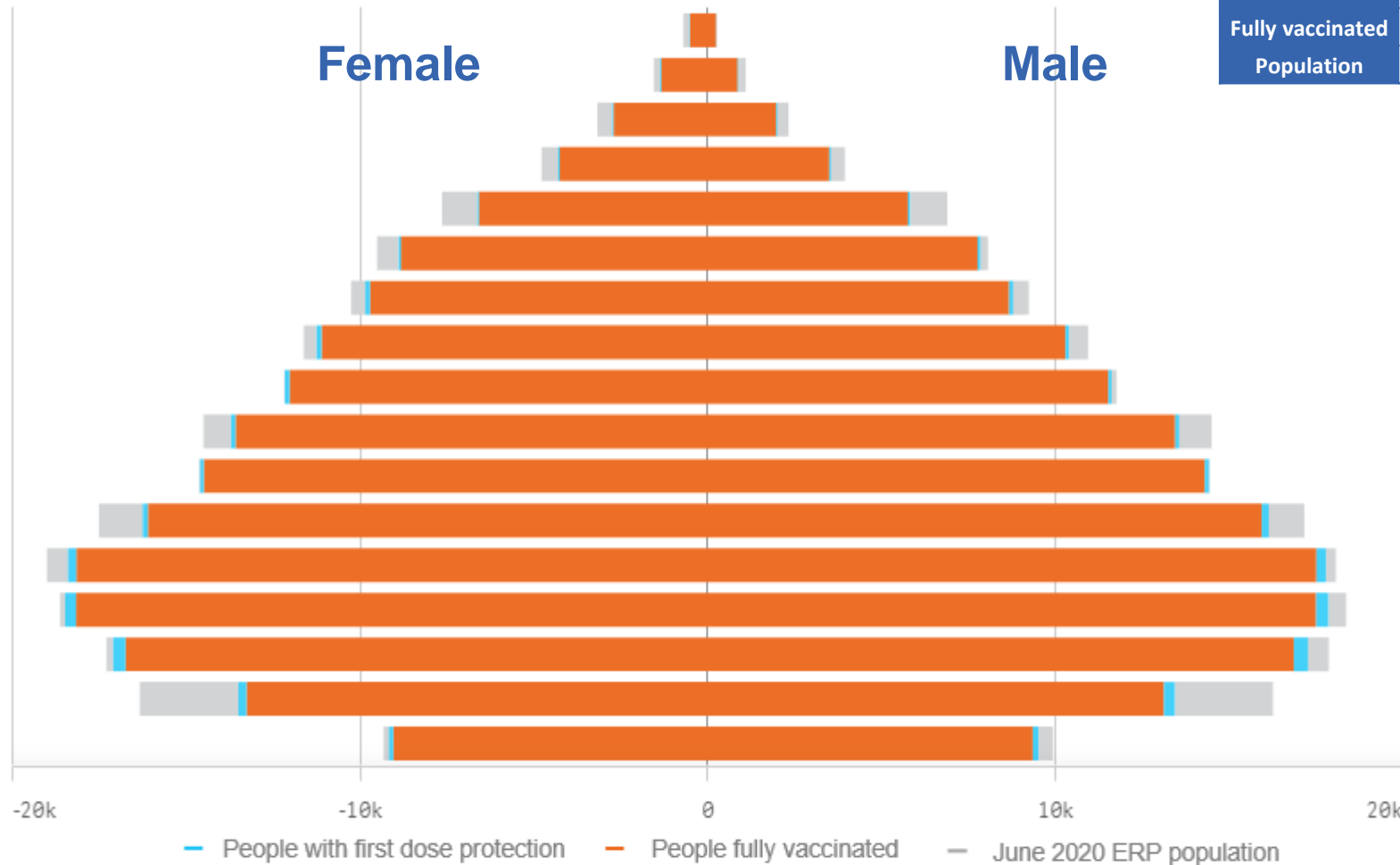


\*Administration state breakdown indicates state in which a vaccine was administered and may differ to residential state. Recent weeks may be understated.

Data as at:  
31 Mar 2022

# Vaccinations by State or Territory of residence

## Australian Capital Territory



	16+	50+	70+
At least one dose	>95% 351,604	>95% 136,660	>95% 45,042
Fully vaccinated	>95% 346,187	>95% 134,945	>95% 44,414
Population	344,037	127,802	39,946

Age	At least one dose	Fully vaccinated
95+	>95%	>95%
90-94	>95%	>95%
85-89	>95%	>95%
80-84	>95%	>95%
75-79	>95%	>95%
70-74	>95%	>95%
65-69	>95%	>95%
60-64	>95%	>95%
55-59	>95%	>95%
50-54	>95%	>95%
45-49	>95%	>95%
40-44	>95%	>95%
35-39	>95%	>95%
30-34	>95%	>95%
25-29	>95%	>95%
20-24	83.19%	81.29%
16-19	>95%	>95%

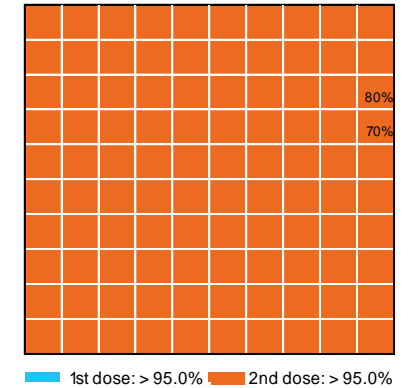
# Vaccinations by State – Australian Capital Territory

Data as at:  
31 Mar 2022

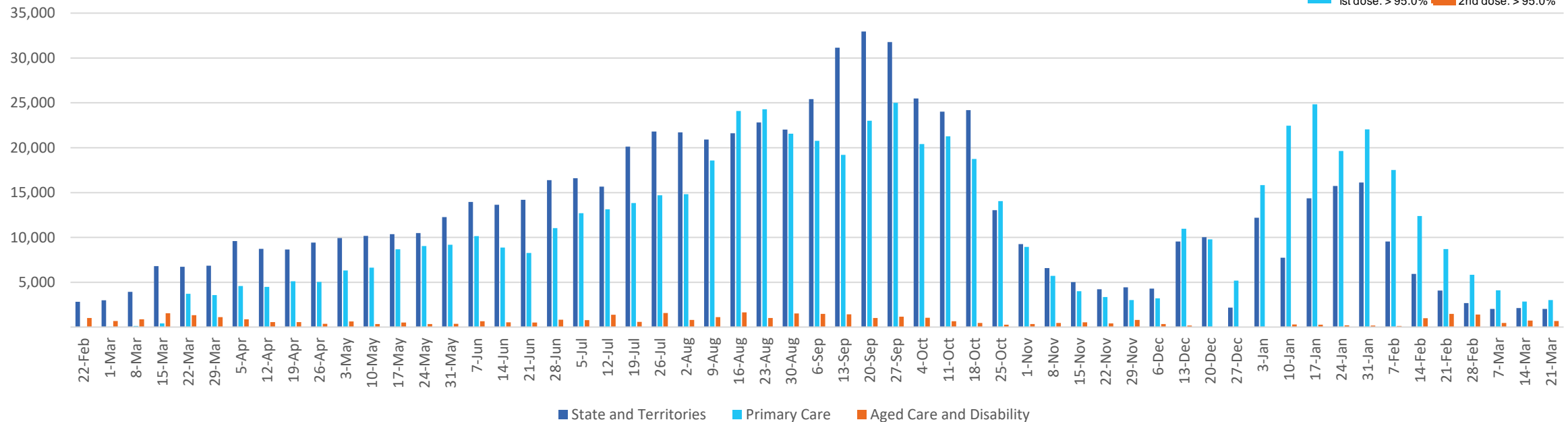
Past 7 days

	25/03/2022	26/03/2022	27/03/2022	28/03/2022	29/03/2022	30/03/2022	31/03/2022	7 day total
State and Territory	1,745	1,273	846	1,714	1,742	1,494	1,256	10,070
Aged Care and Disability	79	113	133	<10	<10	36	48	419
Primary Care	964	718	311	836	928	704	574	5,035
Total (rounded)	3 K	2 K	1 K	3 K	3 K	2 K	2 K	16 K

Eligible population by % coverage



## Doses administered by channel



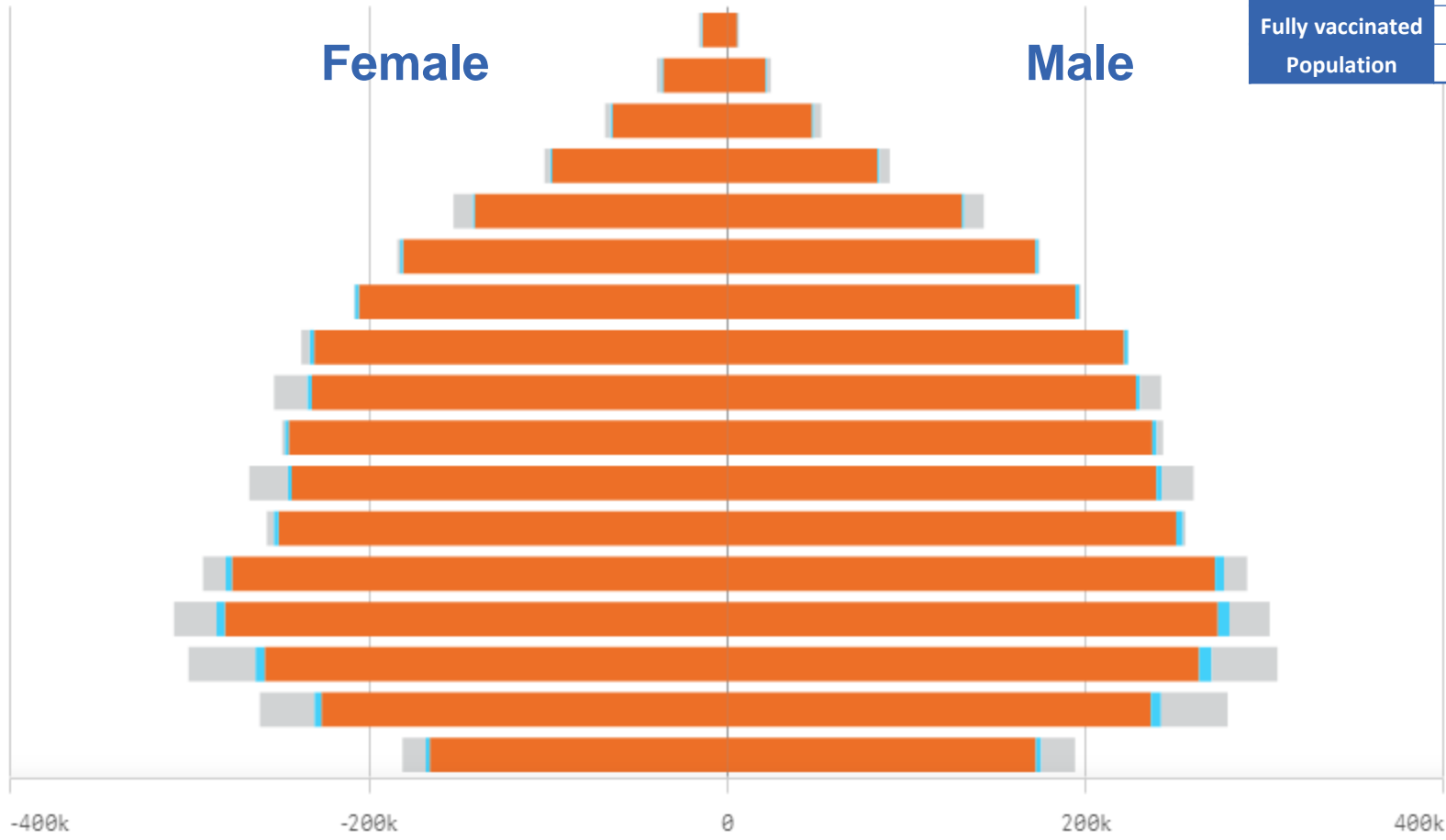
\*Administration state breakdown indicates state in which a vaccine was administered and may differ to residential state. Recent weeks may be understated.

Data as at:  
31 Mar 2022

# Vaccinations by State or Territory of residence

## New South Wales

	16+	50+	70+
At least one dose	>95% 6,304,853	>95% 2,824,401	>95% 1,008,518
Fully vaccinated	94.58% 6,209,990	>95% 2,791,220	>95% 995,197
Population	6,565,651	2,807,793	962,606



— People with first dose protection — People fully vaccinated — June 2020 ERP population

Age	At least one dose	Fully vaccinated
95+	>95%	>95%
90-94	>95%	>95%
85-89	>95%	>95%
80-84	>95%	>95%
75-79	>95%	>95%
70-74	>95%	>95%
65-69	>95%	>95%
60-64	>95%	>95%
55-59	94.02%	92.98%
50-54	>95%	>95%
45-49	92.67%	91.66%
40-44	>95%	>95%
35-39	>95%	94.39%
30-34	92.95%	91.00%
25-29	88.39%	86.23%
20-24	87.88%	85.98%
16-19	91.58%	90.15%

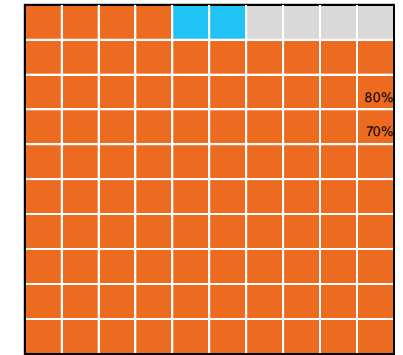
# Vaccinations by State – New South Wales

Data as at:  
31 Mar 2022

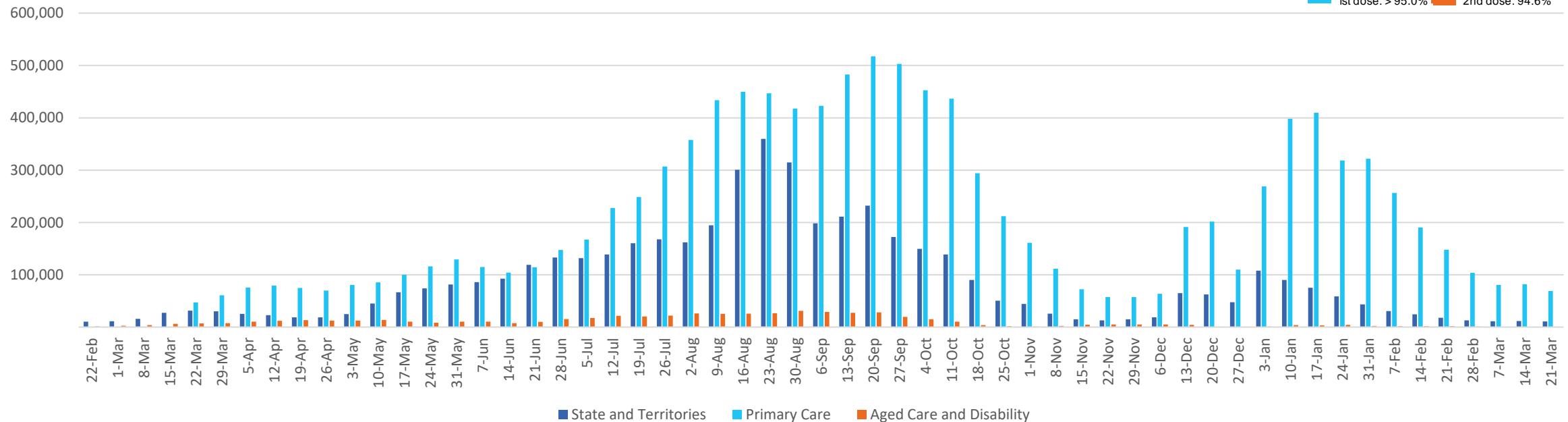
Past 7 days

	25/03/2022	26/03/2022	27/03/2022	28/03/2022	29/03/2022	30/03/2022	31/03/2022	7 day total
State and Territory	3,681	5,553	3,296	2,766	876	2,207	3,770	22,149
Aged Care and Disability	43	65	51	53	117	278	89	696
Primary Care	21,421	10,060	3,157	18,356	17,113	14,039	14,277	98,423
Total (rounded)	25 K	16 K	7 K	21 K	18 K	17 K	18 K	121 K

Eligible population by % coverage



## Doses administered by channel

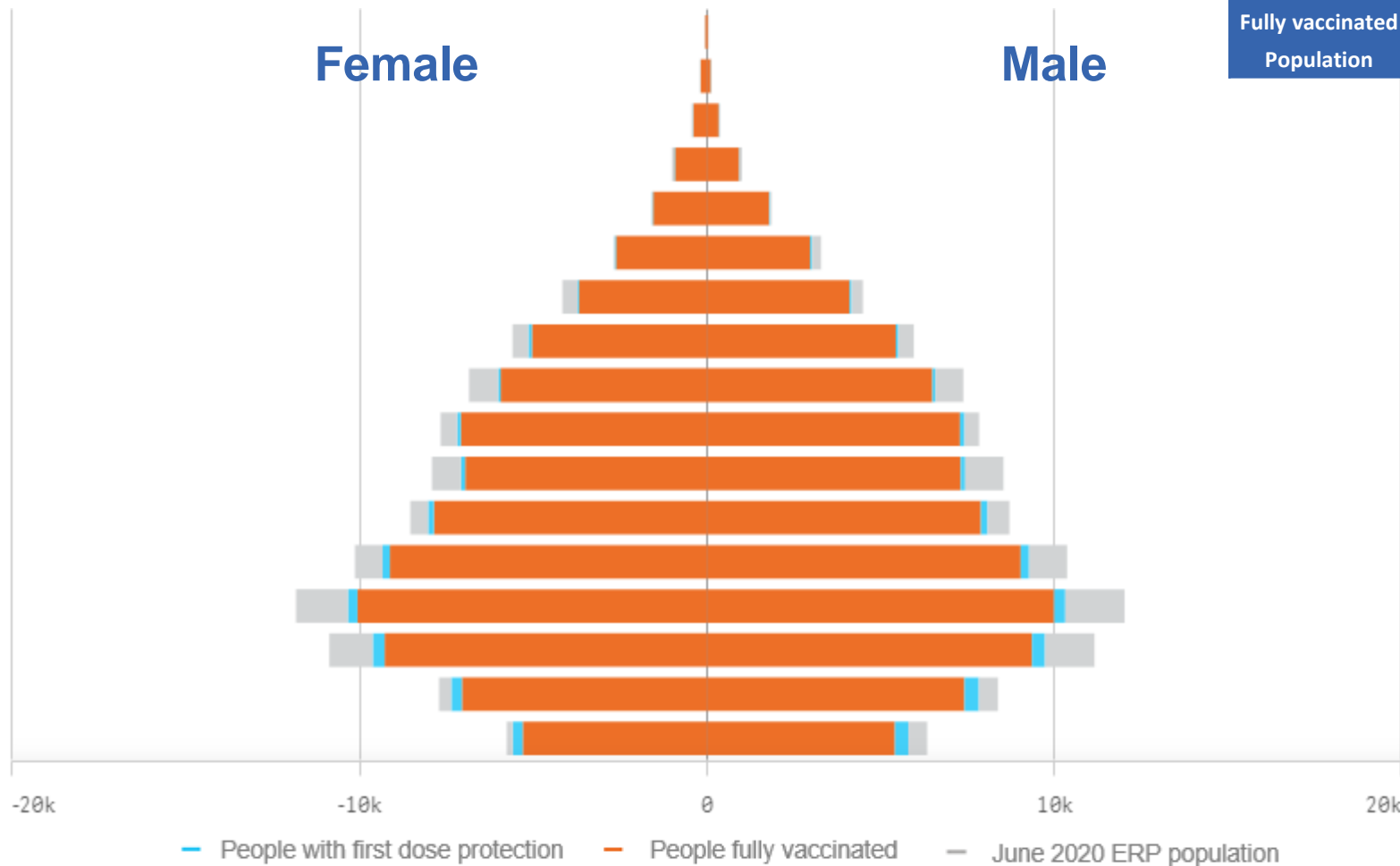


\*Administration state breakdown indicates state in which a vaccine was administered and may differ to residential state. Recent weeks may be understated.

Data as at:  
31 Mar 2022

# Vaccinations by State or Territory of residence

## Northern Territory



	16+		50+		70+	
At least one dose	91.47%	174,321	93.07%	57,964	>95%	12,132
Fully vaccinated	88.95%	169,511	91.58%	57,037	>95%	11,909
Population	190,571		62,280		12,343	

Age	At least one dose	Fully vaccinated
95+	90.72%	85.57%
90-94	>95%	91.33%
85-89	>95%	>95%
80-84	>95%	>95%
75-79	>95%	>95%
70-74	>95%	93.98%
65-69	91.46%	90.23%
60-64	92.35%	90.80%
55-59	88.62%	87.41%
50-54	94.44%	92.84%
45-49	88.43%	86.80%
40-44	93.67%	91.51%
35-39	91.13%	88.83%
30-34	87.26%	84.63%
25-29	88.56%	85.20%
20-24	94.68%	90.16%
16-19	94.18%	88.61%



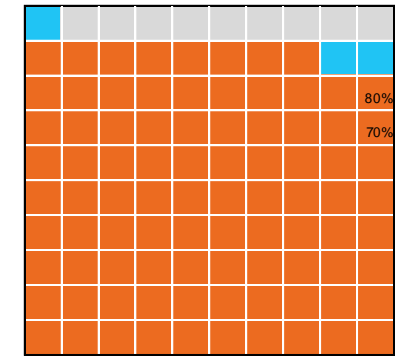
# Vaccinations by State – Northern Territory

Data as at:  
31 Mar 2022

Past 7 days

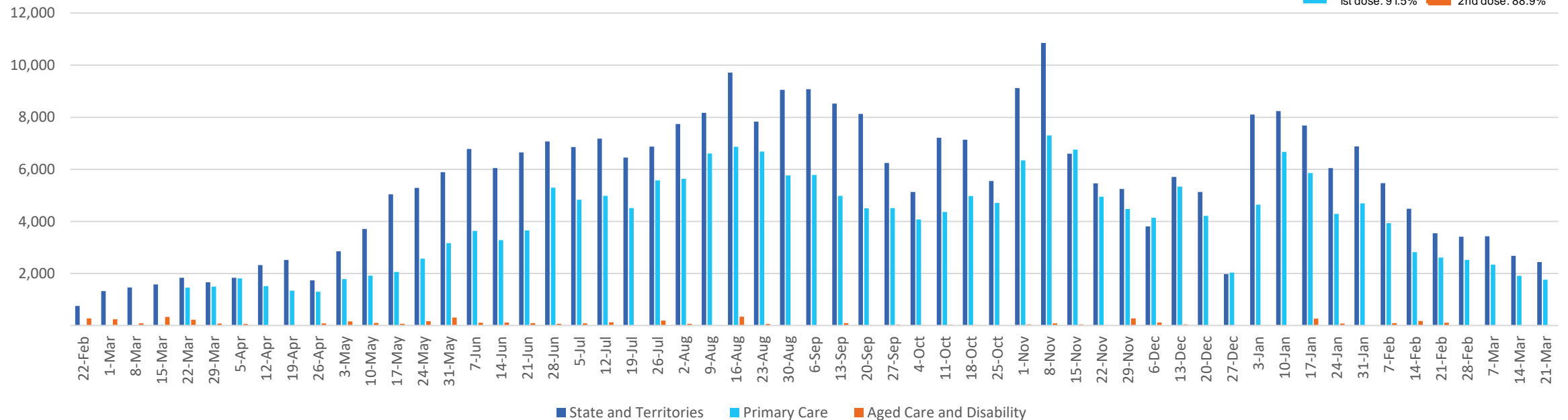
	25/03/2022	26/03/2022	27/03/2022	28/03/2022	29/03/2022	30/03/2022	31/03/2022	7 day total
State and Territory	616	505	322	567	534	500	607	3,651
Aged Care and Disability	<10	<10	<10	<10	<10	<10	<10	<10
Primary Care	446	88	10	289	334	402	397	1,966
Total (rounded)	1 K	1 K	0 K	1 K	1 K	1 K	1 K	6 K

Eligible population by % coverage



1st dose: 91.5% 2nd dose: 88.9%

## Doses administered by channel



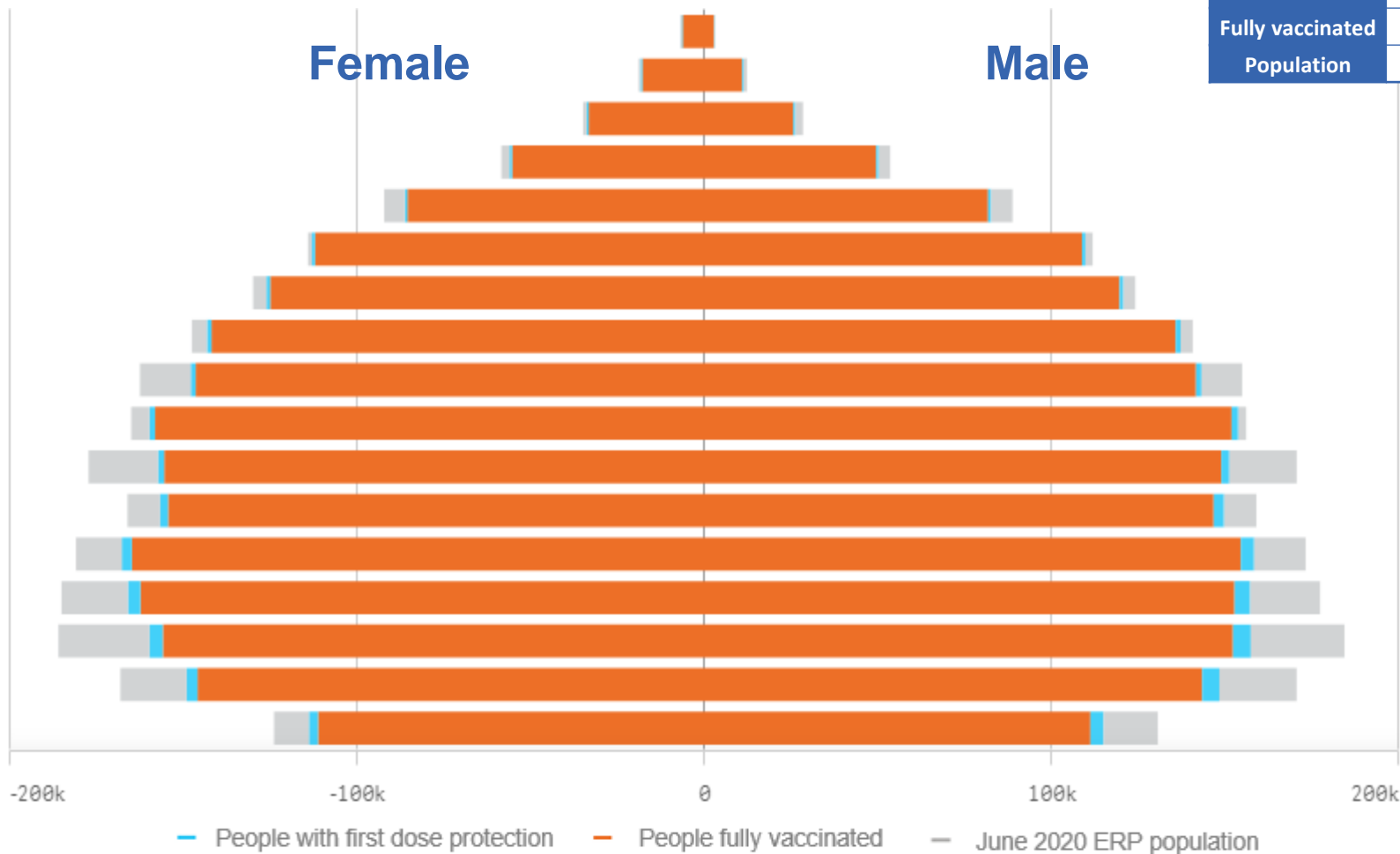
\*Administration state breakdown indicates state in which a vaccine was administered and may differ to residential state. Recent weeks may be understated.

Data as at:  
31 Mar 2022

# Vaccinations by State or Territory of residence

## Queensland

	16+	50+	70+
At least one dose	93.46% 3,843,672	>95% 1,730,628	>95% 597,723
Fully vaccinated	91.78% 3,774,623	>95% 1,710,980	>95% 589,944
Population	4,112,707	1,758,855	577,767



Age	At least one dose	Fully vaccinated
95+	>95%	>95%
90-94	>95%	>95%
85-89	>95%	>95%
80-84	>95%	>95%
75-79	>95%	>95%
70-74	>95%	>95%
65-69	>95%	>95%
60-64	>95%	>95%
55-59	91.77%	90.79%
50-54	>95%	>95%
45-49	88.75%	87.54%
40-44	94.36%	92.69%
35-39	92.26%	90.30%
30-34	89.48%	87.16%
25-29	86.02%	83.47%
20-24	88.05%	85.56%
16-19	89.98%	87.43%

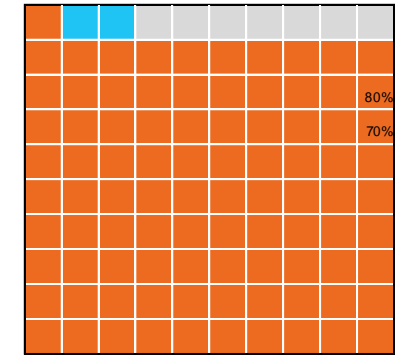
# Vaccinations by State – Queensland

Data as at:  
31 Mar 2022

Past 7 days

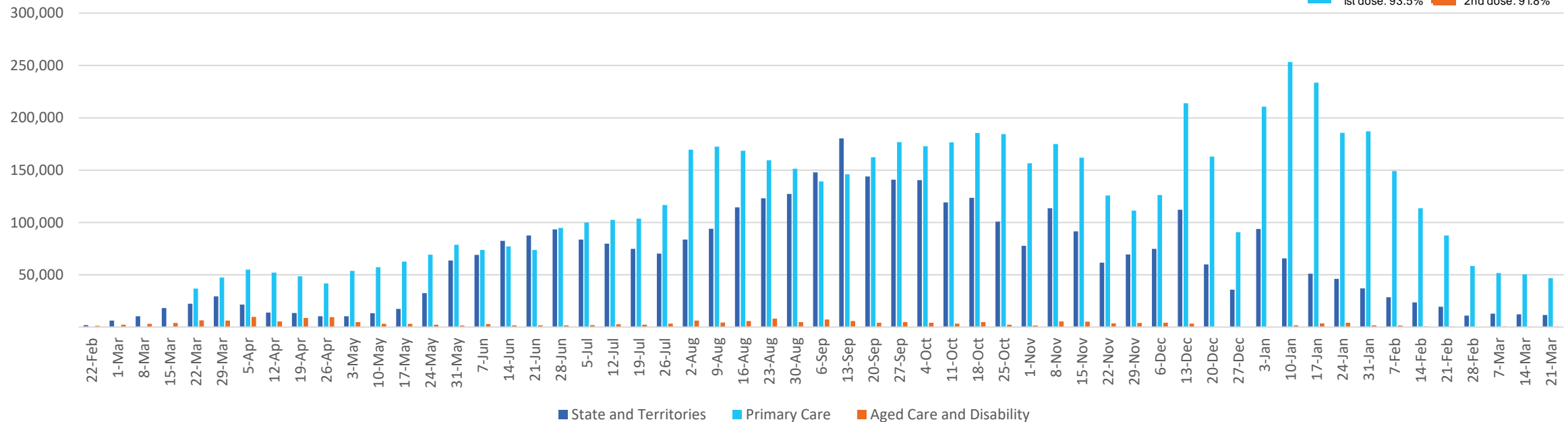
	25/03/2022	26/03/2022	27/03/2022	28/03/2022	29/03/2022	30/03/2022	31/03/2022	7 day total
State and Territory	3,216	5,061	2,325	1,554	2,055	2,105	2,109	18,425
Aged Care and Disability	24	267	270	201	181	439	228	1,610
Primary Care	12,558	4,903	2,479	10,813	10,191	10,758	10,082	61,784
Total (rounded)	16 K	10 K	5 K	13 K	12 K	13 K	12 K	82 K

Eligible population by % coverage



1st dose: 93.5% 2nd dose: 91.8%

## Doses administered by channel

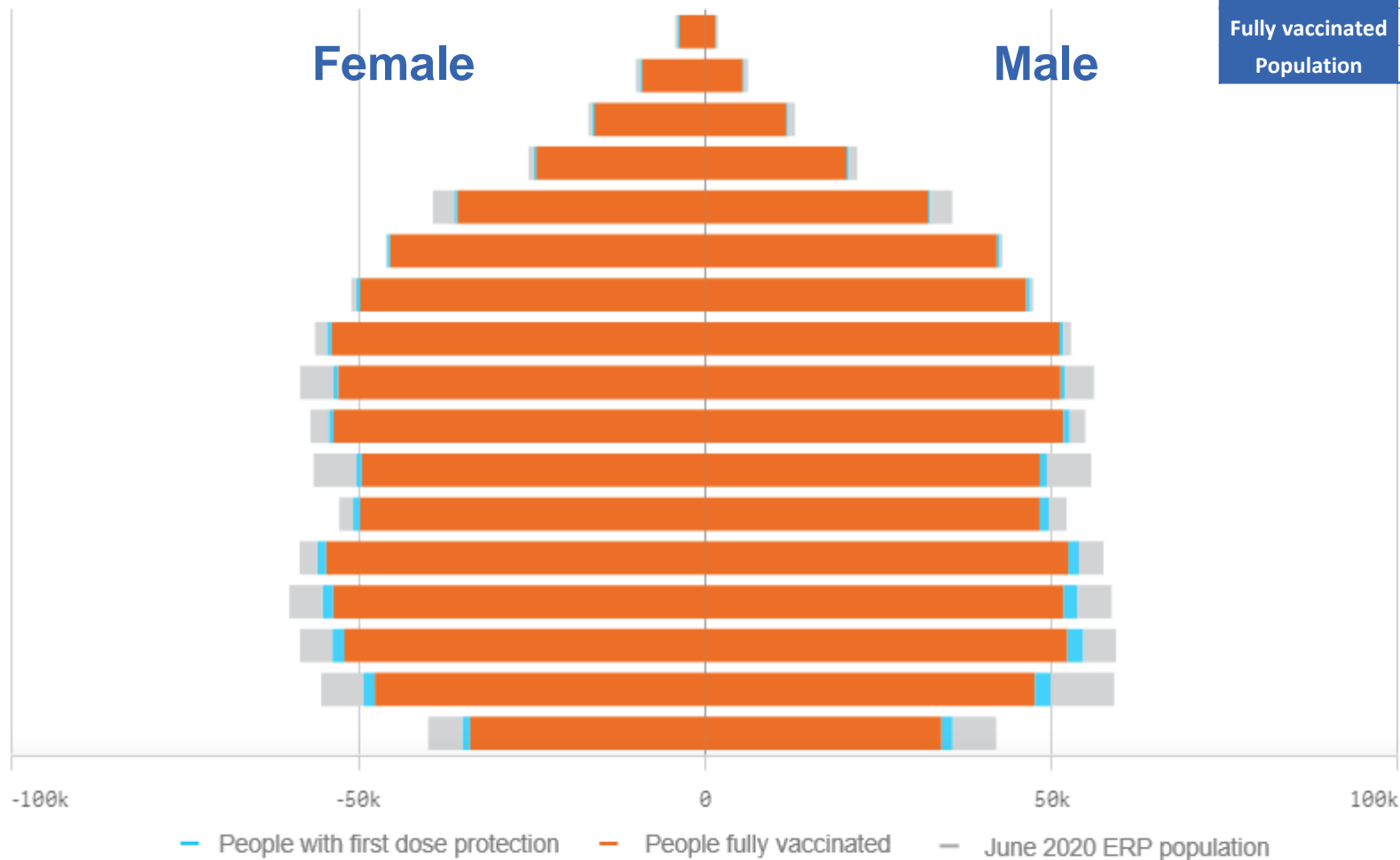


\*Administration state breakdown indicates state in which a vaccine was administered and may differ to residential state. Recent weeks may be understated.

Data as at:  
31 Mar 2022

# Vaccinations by State or Territory of residence

## South Australia



	16+		50+		70+	
At least one dose	>95%	1,370,256	>95%	668,523	>95%	251,890
Fully vaccinated	92.97%	1,339,202	>95%	659,411	>95%	248,096
Population	1,440,400		674,384		240,514	

Age	At least one dose	Fully vaccinated
95+	>95%	>95%
90-94	>95%	>95%
85-89	>95%	>95%
80-84	>95%	>95%
75-79	>95%	>95%
70-74	>95%	>95%
65-69	>95%	>95%
60-64	>95%	>95%
55-59	92.34%	91.15%
50-54	>95%	94.27%
45-49	88.92%	87.30%
40-44	>95%	93.62%
35-39	>95%	92.67%
30-34	92.65%	89.50%
25-29	93.32%	89.65%
20-24	87.58%	83.99%
16-19	86.50%	83.16%

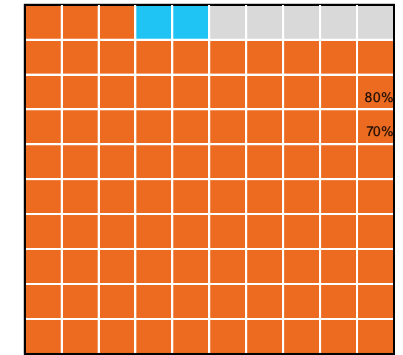
# Vaccinations by State – South Australia

Data as at:  
31 Mar 2022

Past 7 days

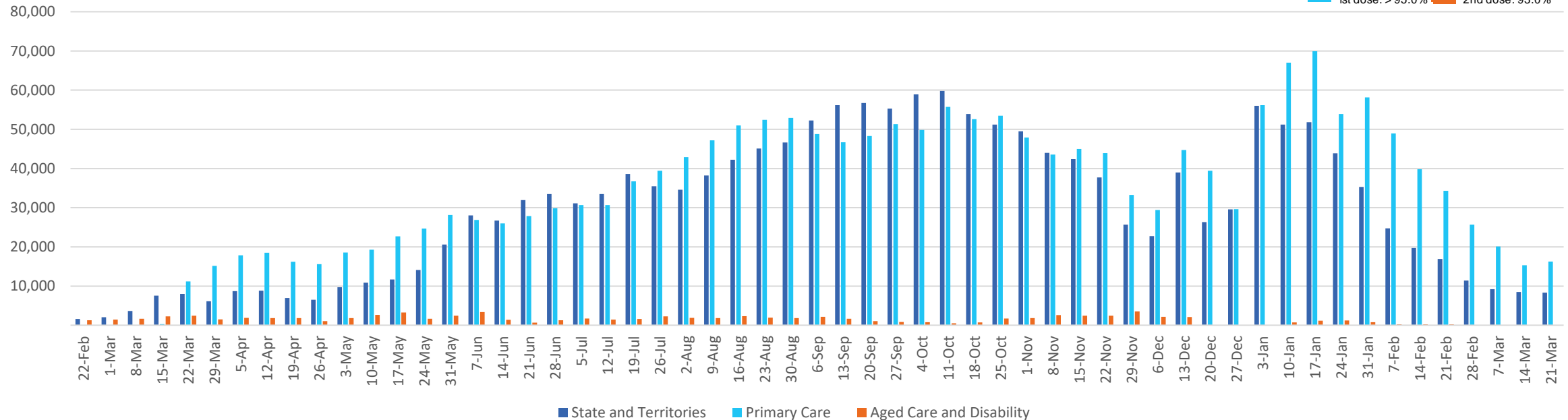
	25/03/2022	26/03/2022	27/03/2022	28/03/2022	29/03/2022	30/03/2022	31/03/2022	7 day total
State and Territory	2,580	3,281	2,336	1,641	1,208	1,412	1,672	14,130
Aged Care and Disability	<10	<10	<10	<10	<10	<10	<10	16
Primary Care	3,934	1,891	617	3,760	3,365	3,076	3,031	19,674
Total (rounded)	7 K	5 K	3 K	5 K	5 K	4 K	5 K	34 K

Eligible population by % coverage



1st dose: >95.0% 2nd dose: 93.0%

## Doses administered by channel

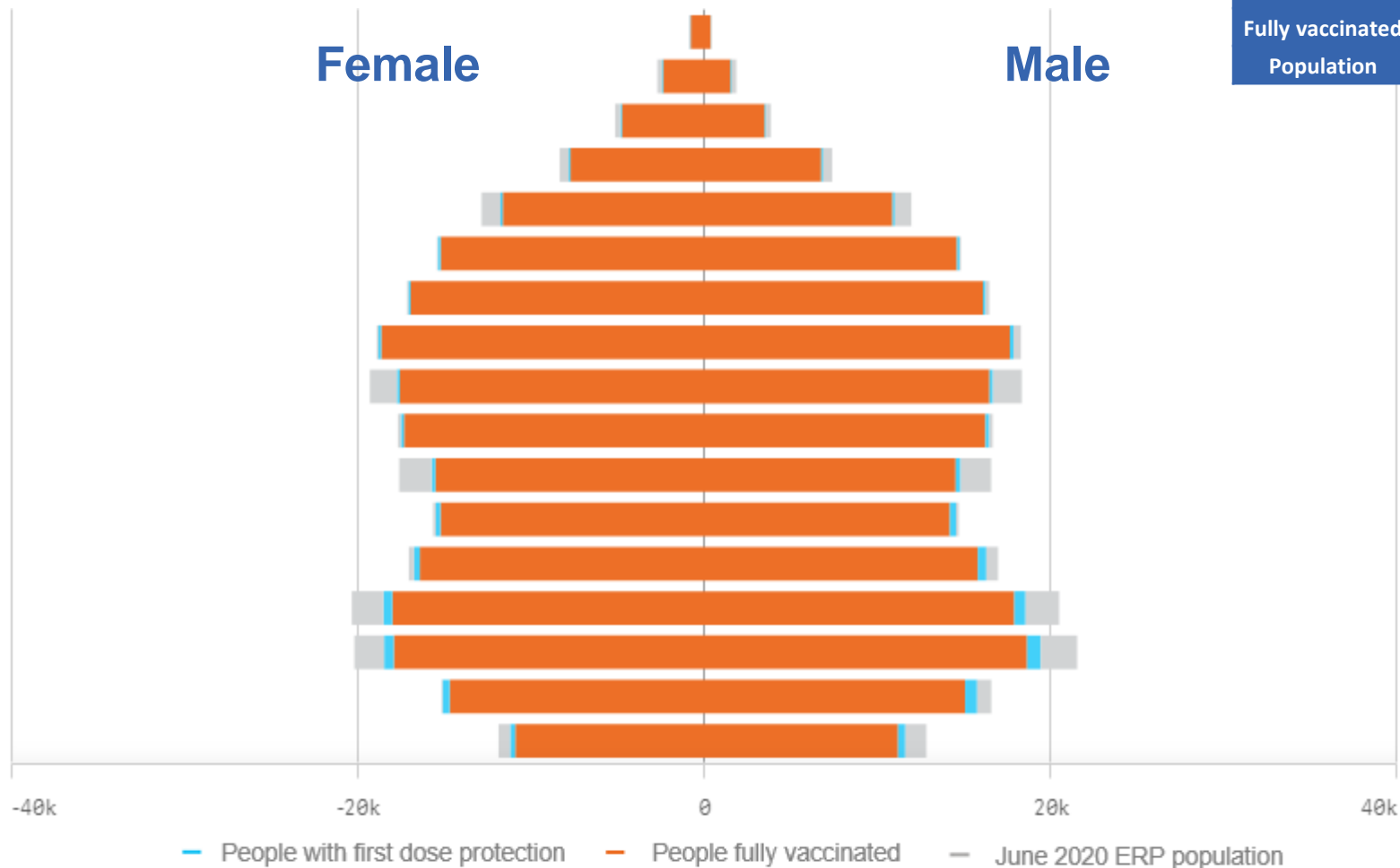


\*Administration state breakdown indicates state in which a vaccine was administered and may differ to residential state. Recent weeks may be understated.

Data as at:  
31 Mar 2022

# Vaccinations by State or Territory of residence

## Tasmania



	16+		50+		70+	
At least one dose	>95%	443,500	>95%	219,996	>95%	81,400
Fully vaccinated	>95%	433,999	>95%	217,298	>95%	80,204
Population	440,172		220,036		77,155	

Age	At least one dose	Fully vaccinated
95+	>95%	>95%
90-94	>95%	>95%
85-89	>95%	>95%
80-84	>95%	>95%
75-79	>95%	>95%
70-74	>95%	>95%
65-69	>95%	>95%
60-64	>95%	>95%
55-59	91.51%	90.50%
50-54	>95%	>95%
45-49	89.51%	87.97%
40-44	>95%	>95%
35-39	>95%	>95%
30-34	>95%	>95%
25-29	>95%	>95%
20-24	>95%	94.35%
16-19	92.47%	89.54%

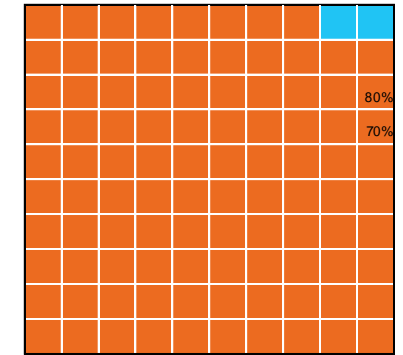
# Vaccinations by State – Tasmania

Data as at:  
31 Mar 2022

Past 7 days

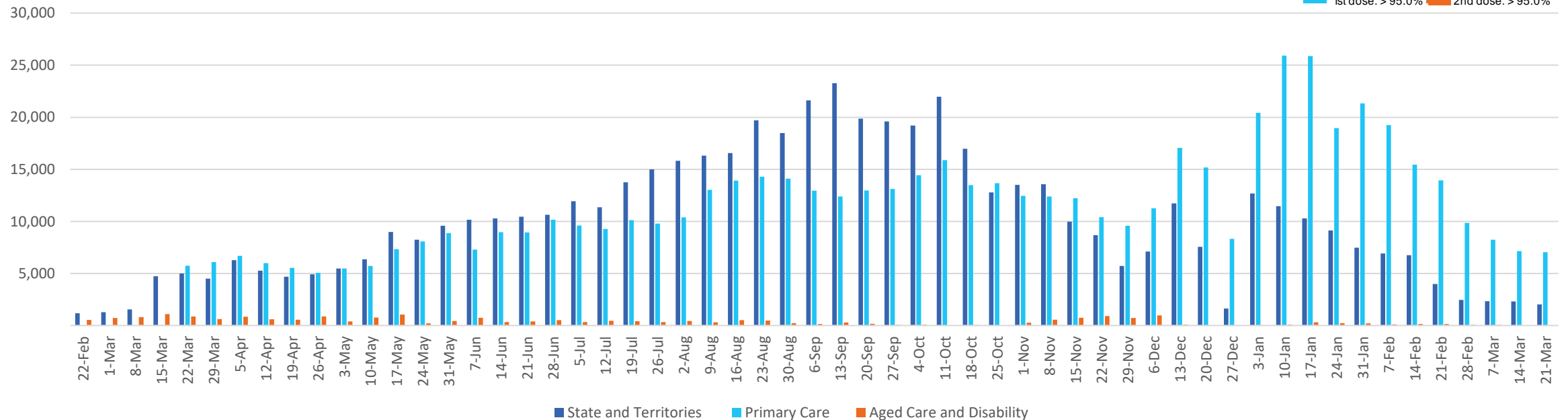
	25/03/2022	26/03/2022	27/03/2022	28/03/2022	29/03/2022	30/03/2022	31/03/2022	7 day total
State and Territory	592	424	2,046	1,300	429	669	<10	5,468
Aged Care and Disability	19	<10	<10	<10	<10	<10	<10	22
Primary Care	1,571	439	128	1,481	1,377	1,450	1,189	7,635
Total (rounded)	2 K	1 K	2 K	3 K	2 K	2 K	1 K	13 K

Eligible population by % coverage



1st dose: > 95.0% 2nd dose: > 95.0%

## Doses administered by channel



\*Administration state breakdown indicates state in which a vaccine was administered and may differ to residential state. Recent weeks may be understated.

Data as at:  
31 Mar 2022

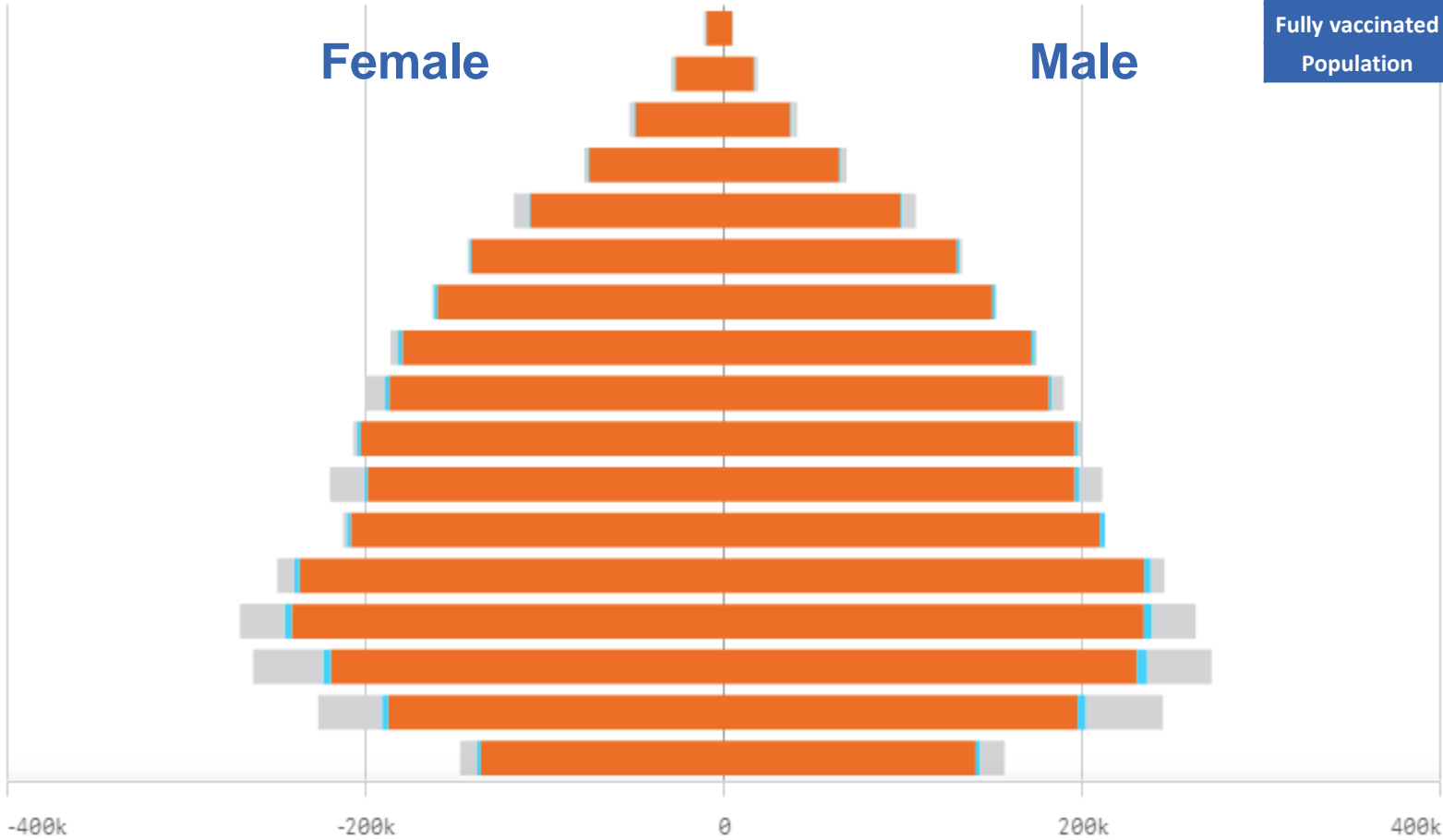
# Vaccinations by State or Territory of residence

## Victoria

	16+	50+	70+
At least one dose	>95% 5,144,078	>95% 2,219,309	>95% 773,594
Fully vaccinated	93.72% 5,067,961	>95% 2,192,135	>95% 763,073
Population	5,407,574	2,211,211	743,519

Female

Male



— People with first dose protection — People fully vaccinated — June 2020 ERP population

Age	At least one dose	Fully vaccinated
95+	>95%	>95%
90-94	>95%	>95%
85-89	>95%	>95%
80-84	>95%	>95%
75-79	>95%	>95%
70-74	>95%	>95%
65-69	>95%	>95%
60-64	>95%	>95%
55-59	>95%	94.45%
50-54	>95%	>95%
45-49	92.65%	91.67%
40-44	>95%	>95%
35-39	>95%	>95%
30-34	90.97%	89.28%
25-29	86.28%	84.32%
20-24	83.59%	81.77%
16-19	92.44%	90.94%



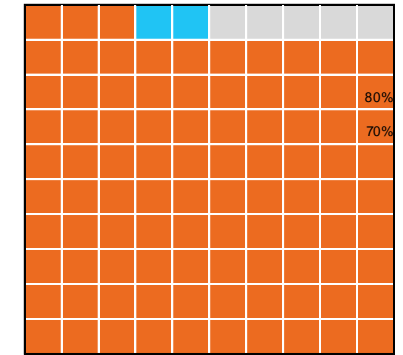
# Vaccinations by State – Victoria

Data as at:  
31 Mar 2022

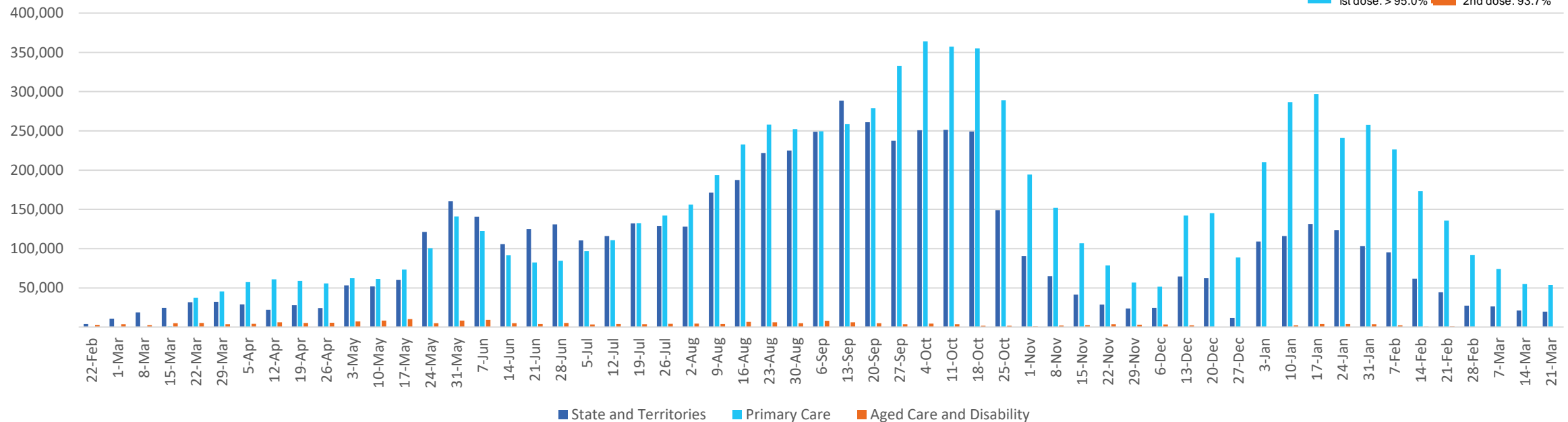
## Past 7 days

	25/03/2022	26/03/2022	27/03/2022	28/03/2022	29/03/2022	30/03/2022	31/03/2022	7 day total
State and Territory	5,008	8,142	4,774	3,776	3,369	3,249	2,586	30,904
Aged Care and Disability	<10	<10	<10	20	22	19	23	91
Primary Care	16,662	9,441	3,614	14,653	12,764	11,124	11,087	79,345
Total (rounded)	22 K	18 K	8 K	18 K	16 K	14 K	14 K	110 K

## Eligible population by % coverage



## Doses administered by channel

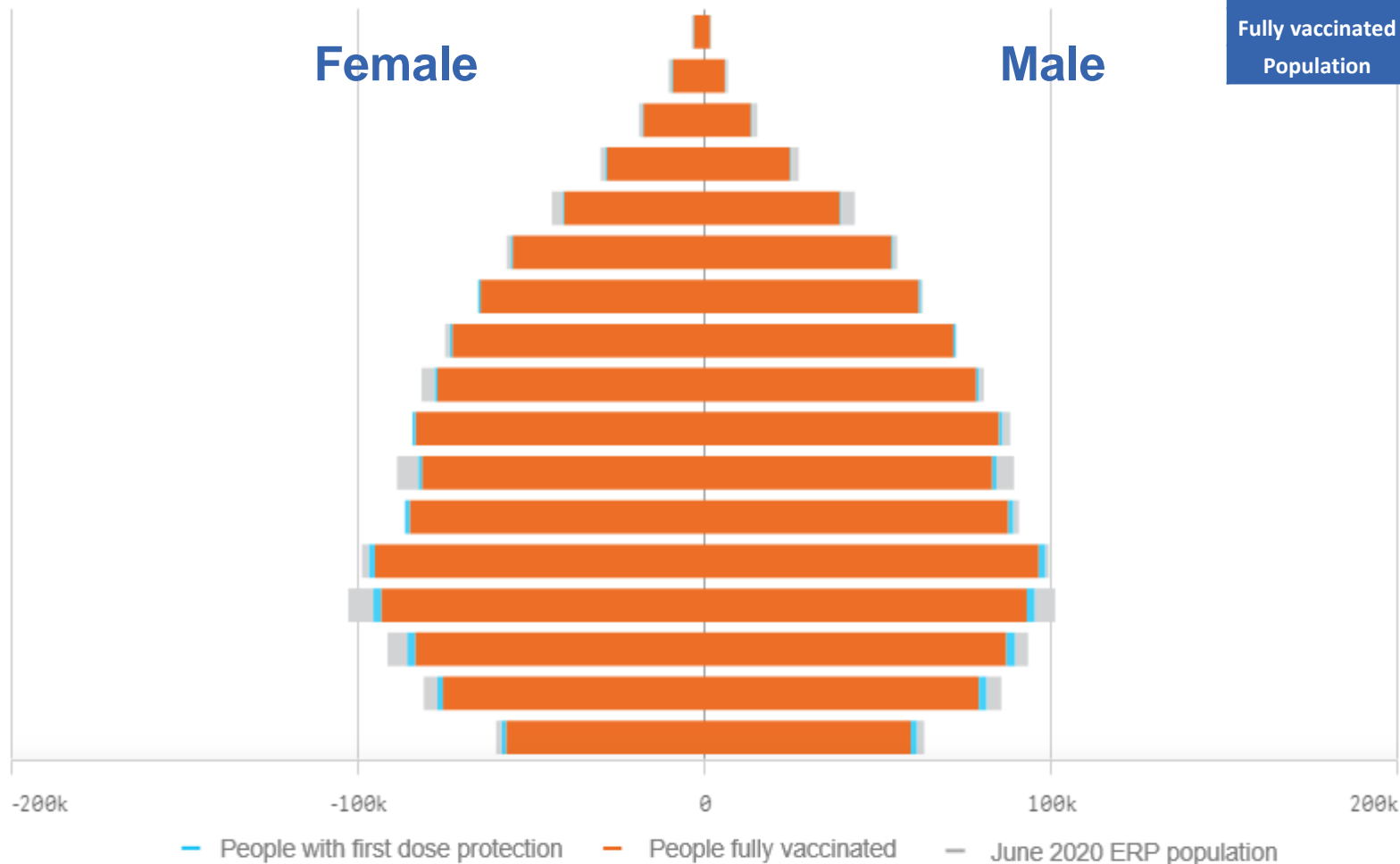


\*Administration state breakdown indicates state in which a vaccine was administered and may differ to residential state. Recent weeks may be understated.

Data as at:  
31 Mar 2022

# Vaccinations by State or Territory of residence

## Western Australia



	16+		50+		70+	
At least one dose	>95%	2,085,208	>95%	899,309	>95%	297,373
Fully vaccinated	>95%	2,048,715	>95%	888,784	>95%	293,254
Population	2,114,978		885,370		280,281	

Age	At least one dose	Fully vaccinated
95+	>95%	>95%
90-94	>95%	>95%
85-89	>95%	>95%
80-84	>95%	>95%
75-79	>95%	>95%
70-74	>95%	>95%
65-69	>95%	>95%
60-64	>95%	>95%
55-59	>95%	>95%
50-54	>95%	>95%
45-49	93.81%	92.55%
40-44	>95%	>95%
35-39	>95%	>95%
30-34	93.96%	91.63%
25-29	>95%	92.69%
20-24	>95%	93.03%
16-19	>95%	94.57%

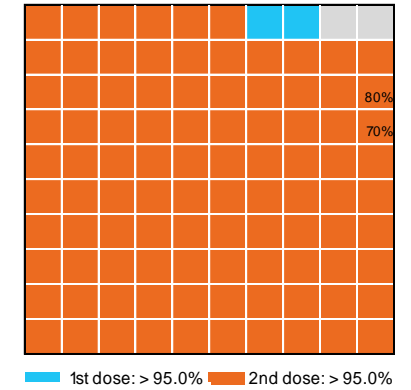
# Vaccinations by State – Western Australia

Data as at:  
31 Mar 2022

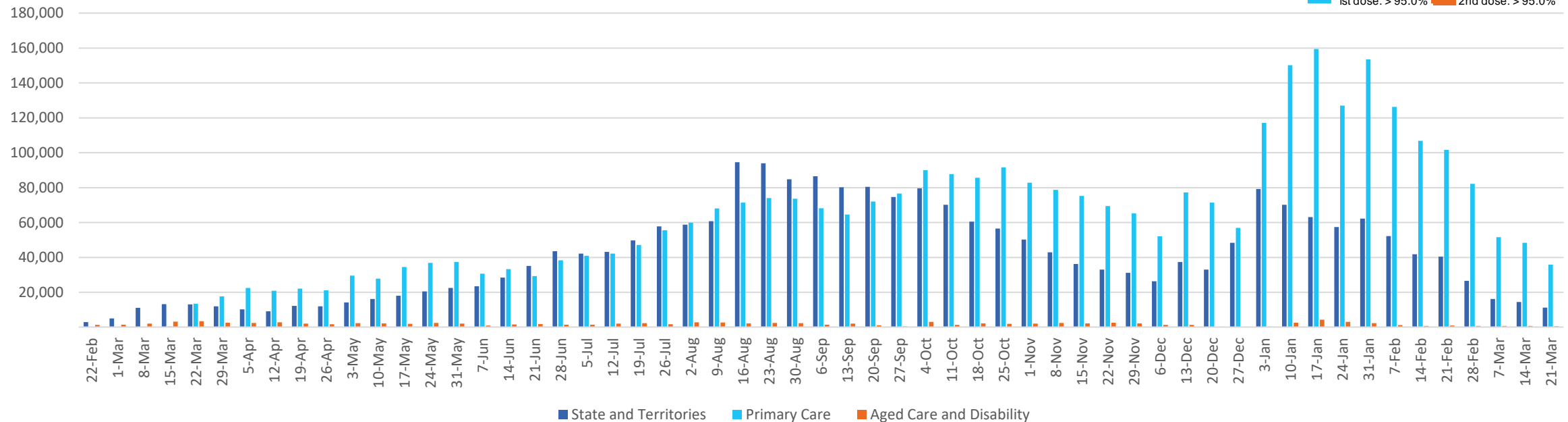
Past 7 days

	25/03/2022	26/03/2022	27/03/2022	28/03/2022	29/03/2022	30/03/2022	31/03/2022	7 day total
State and Territory	2,585	3,115	1,750	2,333	2,242	2,041	2,368	16,434
Aged Care and Disability	90	32	24	83	93	70	92	484
Primary Care	8,688	5,447	1,925	7,225	6,903	6,542	6,549	43,279
Total (rounded)	11 K	9 K	4 K	10 K	9 K	9 K	9 K	60 K

Eligible population by % coverage



## Doses administered by channel



\*Administration state breakdown indicates state in which a vaccine was administered and may differ to residential state. Recent weeks may be understated.