



Australian Government
Operation COVID Shield

COVID-19 Vaccine Roll-out

08 April 2022

Data as at:
07 Apr 2022

Total vaccine doses



56,826,939 total vaccine
doses administered nationally as at 07 April
+53,068 recorded in the last 24 hours



19,979,064

people have had at least one
dose

>95%

of people over the age of 16
have had at least one dose



19,639,404

people are fully vaccinated

>95%

of people over the age of 16 are
fully vaccinated



13,088,177

people over the age of 16
who have received more
than two doses

NSW
17,642,170
(+16,380 daily
increase)

VIC
14,971,518
(+11,274 daily
increase)

QLD
10,765,741
(+9,813 daily
increase)

WA
6,223,003
(+7,466 daily
increase)

TAS
1,278,176
(+1,454 daily
increase)

SA
3,914,869
(+3,875 daily
increase)

ACT
1,473,486
(+1,953 daily
increase)

NT
557,976
(+853 daily
increase)

*Administration state breakdown indicates state in which a vaccine was administered

**Overall dose count includes instances of more than three doses per person in a small number of cases.

Source: Australian Immunisation Register

Booster Vaccinations

Australia's COVID-19
Vaccine Roadmap

Data as at:
07 Apr 2022



196,324

Indigenous people who have
received more than two doses

52.3%

of eligible population (375,661)



164,546

Aged Care Residents who have
received more than two doses##

94.9%

of eligible population (173,357)



177,166

NDIS participants

who have received more than two doses#

73.2%

of eligible population
(241,000)

20,900

NDIS residents

87.9%

of eligible population
(23,000)



13,088,177

total people who
have received more than two doses nationally

+27,883 recorded in the last 24 hours

68.5% of people who are eligible (19,095,735)

have received more than two doses

NSW	People	% of Eligible
Cumulative	4,004,924	64.9%
Daily increase	9,065	

VIC	People	% of Eligible
Cumulative	3,526,987	70.2%
Daily increase	5,288	

QLD	People	% of Eligible
Cumulative	2,266,582	62.4%
Daily increase	5,000	

WA	People	% of Eligible
Cumulative	1,583,267	86.3%
Daily increase	3,940	

SA	People	% of Eligible
Cumulative	926,650	72.0%
Daily increase	2,071	

TAS	People	% of Eligible
Cumulative	297,877	71.6%
Daily increase	806	

ACT	People	% of Eligible
Cumulative	261,297	76.0%
Daily increase	352	

NT	People	% of Eligible
Cumulative	113,470	70.0%
Daily increase	566	

107,123 doses administered to persons
residing in other territories or with
missing residential information

*People may belong to multiple groups and could be represented in the above breakdowns multiple times.

NDIS participants data as at 5 April 2022.

Aged Care Residents data as at 7 April 2022.

Source: Australian Immunisation Register

Vaccinations by residential location

Australia's COVID-19
Vaccine Roadmap

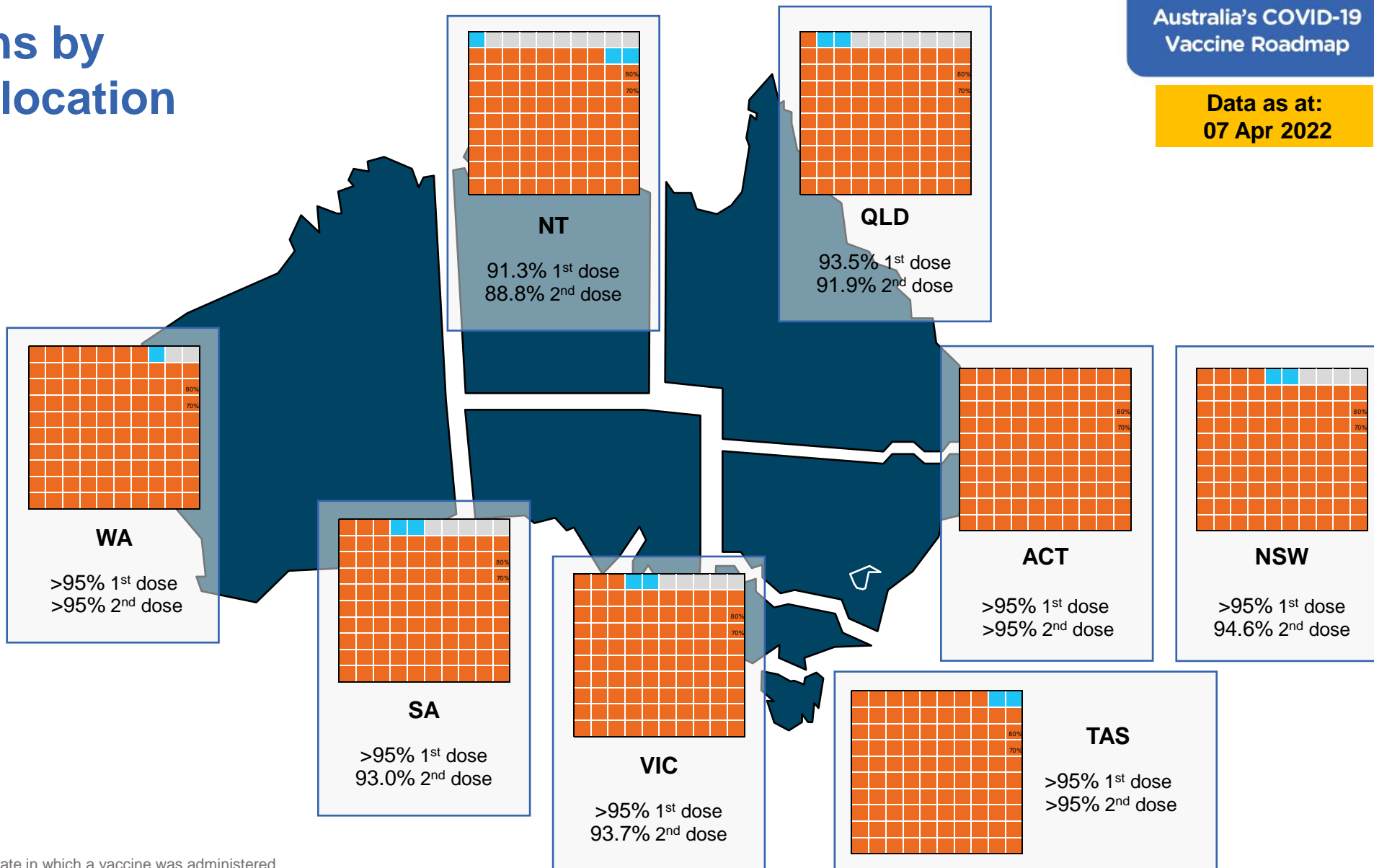
Data as at:
07 Apr 2022

First doses

Age	Today	4 weeks ago	8 weeks ago
16+	>95%	>95%	>95%
50+	>95%	>95%	>95%
70+	>95%	>95%	>95%

Fully vaccinated

Age	Today	4 weeks ago	8 weeks ago
16+	>95%	94.9%	94.3%
50+	>95%	>95%	>95%
70+	>95%	>95%	>95%



*Residential state may differ from the state in which a vaccine was administered

Commonwealth and Jurisdiction vaccine doses administered

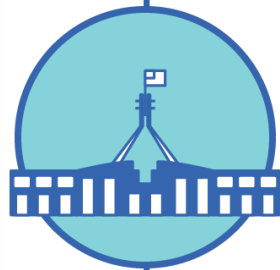
Data as at:
07 Apr 2022



56,826,939 total vaccine
doses administered nationally as at 07 April
+ 53,068 recorded in the last 24 hours



20,827,226
doses administered by state
and territory facilities
+ 10,971
recorded in the last 24 hours



35,999,713
doses administered by
commonwealth facilities
+ 42,097
recorded in the last 24 hours

34,731,030 total vaccine doses
administered in primary care settings
1,268,683 total vaccine doses
administered in aged care and disability
settings

NSW	Jurisdictions	Commonwealth
Cumulative	5,067,605	12,574,565
Daily increase	1,627	14,753

VIC	Jurisdictions	Commonwealth
Cumulative	6,006,538	8,964,980
Daily increase	2,110	9,164

QLD	Jurisdictions	Commonwealth
Cumulative	3,815,415	6,950,326
Daily increase	1,883	7,930

WA	Jurisdictions	Commonwealth
Cumulative	2,457,597	3,765,406
Daily increase	1,893	5,573

TAS	Jurisdictions	Commonwealth
Cumulative	613,814	664,362
Daily increase	261	1,193

SA	Jurisdictions	Commonwealth
Cumulative	1,777,880	2,136,989
Daily increase	1,437	2,438

ACT	Jurisdictions	Commonwealth
Cumulative	760,584	712,902
Daily increase	1,299	654

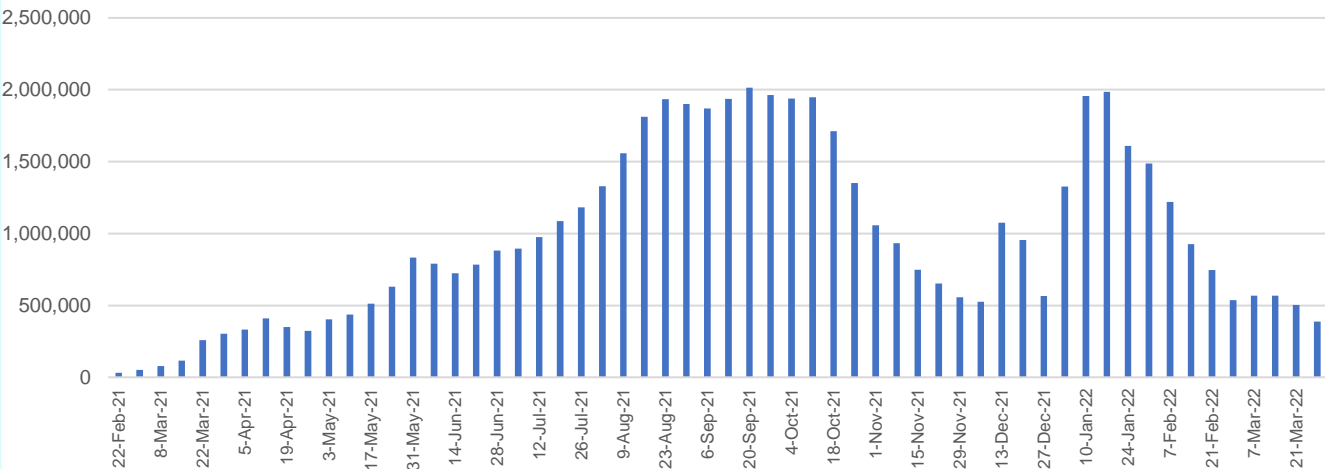
NT	Jurisdictions	Commonwealth
Cumulative	327,793	230,183
Daily increase	461	392

Vaccine milestone charts

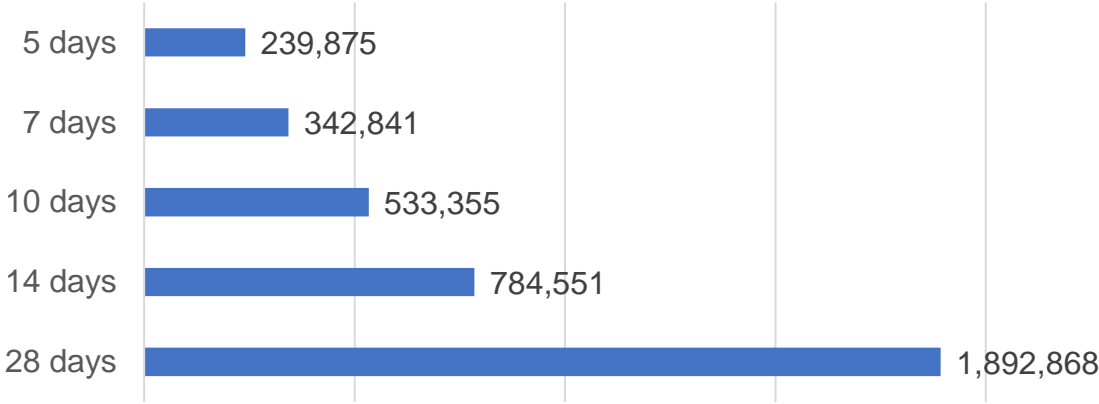
Data as at:
07 Apr 2022

Australia's COVID-19
Vaccine Roadmap

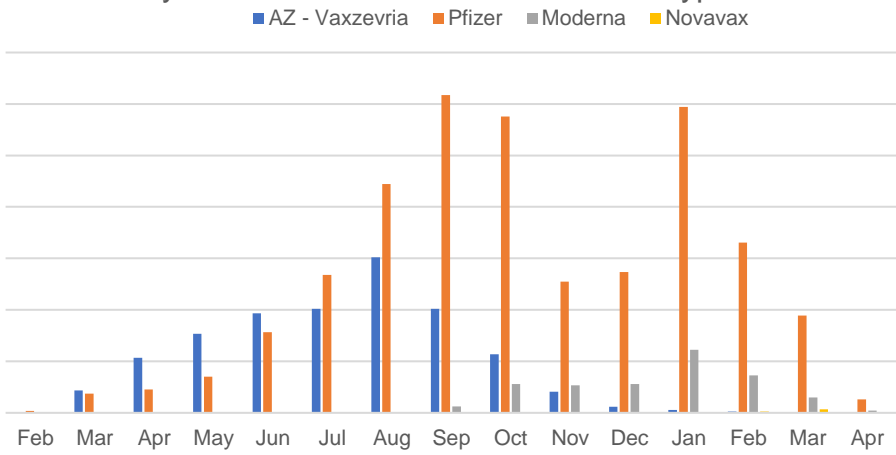
Doses Administered by Week



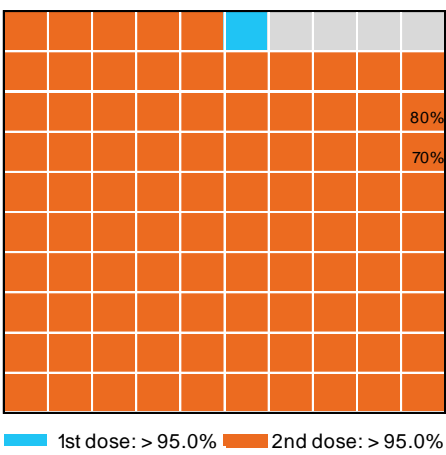
Doses Reported



Doses by administration month and vaccine type



Eligible population percentage coverage



*Each square represents 1% of the national population.
Squares are filled as milestones are achieved.

*Sourced from the Australian Immunisation Register.

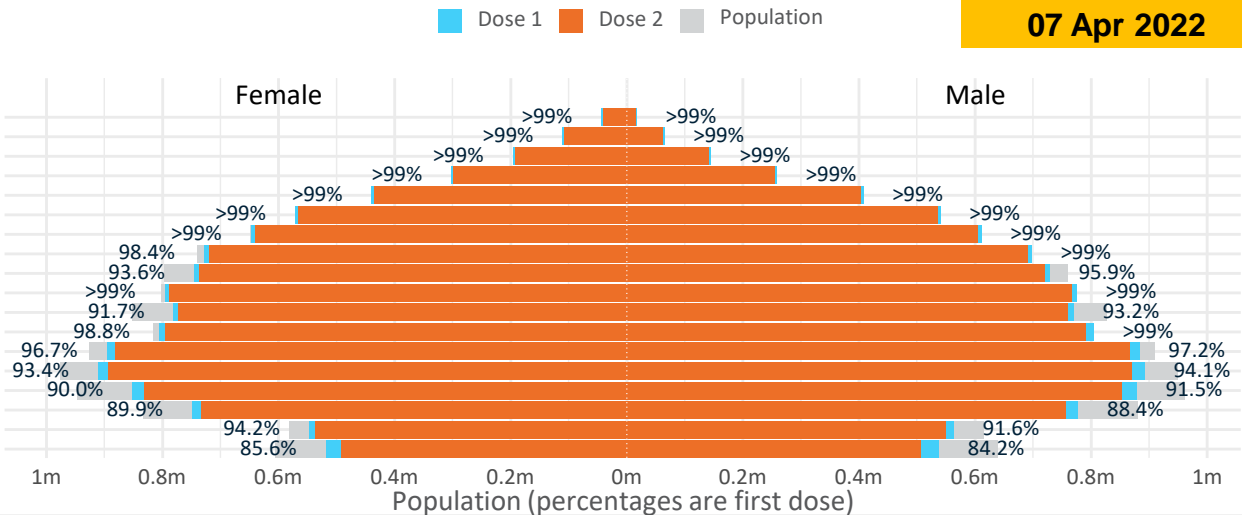
Doses by age and sex

First and second doses by age and sex

	16+	50+	12-15	5-11
Dose 1	96.89% (19,979,064 doses / 20,619,959 people)	>99% (8,834,300 doses / 8,749,703 people)	84.92% (1,056,364 doses / 1,243,990 people)	52.55% (1,196,306 doses / 2,276,638 people)
Dose 2	95.24% (19,639,404 doses / 20,619,959 people)	>99% (8,725,815 doses / 8,749,703 people)	80.23% (998,078 doses / 1,243,990 people)	31.23% (711,007 doses / 2,276,638 people)

Data as at:
07 Apr 2022

Age	Dose 1	Dose 2
95+	60,803 (>99%)	57,409 (>99%)
90-94	175,587 (>99%)	169,881 (>99%)
85-89	341,508 (>99%)	334,378 (>99%)
80-84	560,835 (>99%)	553,376 (>99%)
75-79	847,314 (>99%)	838,768 (>99%)
70-74	1,112,715 (>99%)	1,101,635 (>99%)
65-69	1,260,458 (>99%)	1,246,047 (>99%)
60-64	1,427,058 (>99%)	1,410,661 (98.2%)
55-59	1,475,517 (94.8%)	1,458,702 (93.8%)
50-54	1,572,505 (>99%)	1,554,958 (>99%)
45-49	1,552,343 (92.6%)	1,533,010 (91.4%)
40-44	1,612,775 (>99%)	1,587,845 (98.0%)
35-39	1,783,987 (97.2%)	1,751,171 (95.4%)
30-34	1,811,209 (94.2%)	1,768,875 (92.0%)
25-29	1,740,577 (91.3%)	1,692,956 (88.8%)
20-24	1,532,340 (89.5%)	1,492,838 (87.2%)
16-19	1,111,533 (93.0%)	1,086,894 (90.9%)
12-15	1,056,364 (84.9%)	998,078 (80.2%)



	AUS	ACT	NSW	NT	QLD	SA	TAS	VIC	WA
16 and over - dose 1	19,979,064	351,591	6,306,417	174,049	3,844,798	1,370,101	443,382	5,142,265	2,086,244
16 and over - dose 2	19,639,404	346,129	6,211,553	169,272	3,777,579	1,339,506	434,046	5,066,146	2,051,518
16 and over - population	20,619,959*	344,037	6,565,651	190,571	4,112,707	1,440,400	440,172	5,407,574	2,114,978
16 and over % with dose 1	96.89%	>99%	96.05%	91.33%	93.49%	95.12%	>99%	95.09%	98.64%
16 and over % with dose 2	95.24%	>99%	94.61%	88.82%	91.85%	93.00%	98.61%	93.69%	97.00%
5 to 11 - dose 1	1,196,306	31,880	355,989	13,190	209,103	84,210	28,814	325,423	139,978
5 to 11 - dose 2	711,007	23,433	215,678	6,736	125,111	51,291	20,819	191,567	72,917
5 to 11 - population	2,276,638	39,789	716,460	24,750	478,731	148,816	45,033	578,499	244,154
5 to 11 % with dose 1	52.55%	80.12%	49.69%	53.29%	43.68%	56.59%	63.98%	56.25%	57.33%
5 to 11 % with dose 2	31.23%	58.89%	30.10%	27.22%	26.13%	34.47%	46.23%	33.11%	29.87%
12 to 15 - dose 1	1,056,364	20,091	325,322	10,897	207,419	68,462	22,922	275,986	115,694
12 to 15 - dose 2	998,078	19,505	310,321	9,790	194,002	64,675	21,764	263,539	106,128
12 to 15 - population	1,243,990	19,693	390,330	13,060	270,146	82,747	26,308	308,611	132,869
12 to 15 % with dose 1	84.92%	>99%	83.35%	83.44%	76.78%	82.74%	87.13%	89.43%	87.07%
12 to 15 % with dose 2	80.23%	>99%	79.50%	74.96%	71.81%	78.16%	82.73%	85.40%	79.87%

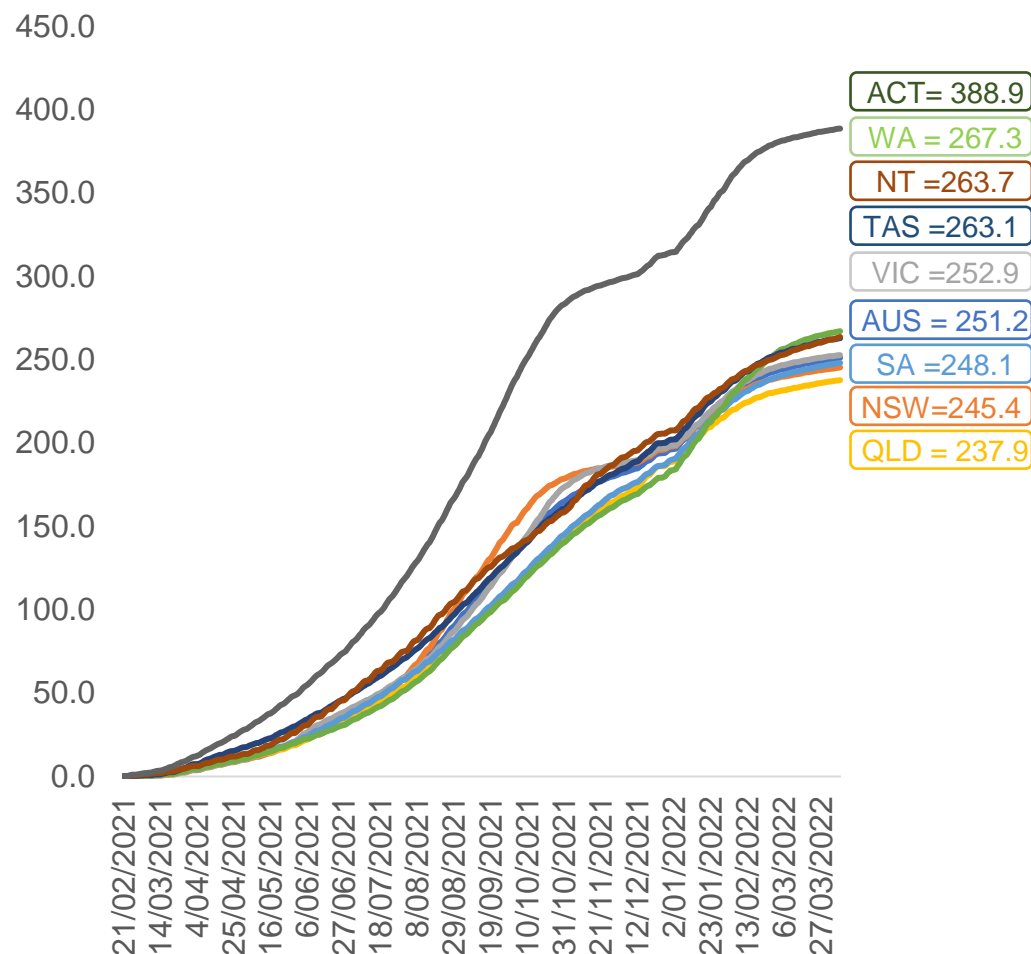
*National population will not equal sum of listed jurisdictions due to a small number of people counted in national population residing in some 'other' territories. Sum of state doses will not add to national total as some records are unable to be geocoded to a State or Territory.
Doses sourced from Australian Immunisation Register, population from ABS ERP June 2020

Vaccinations by location

Data as at:
07 Apr 2022

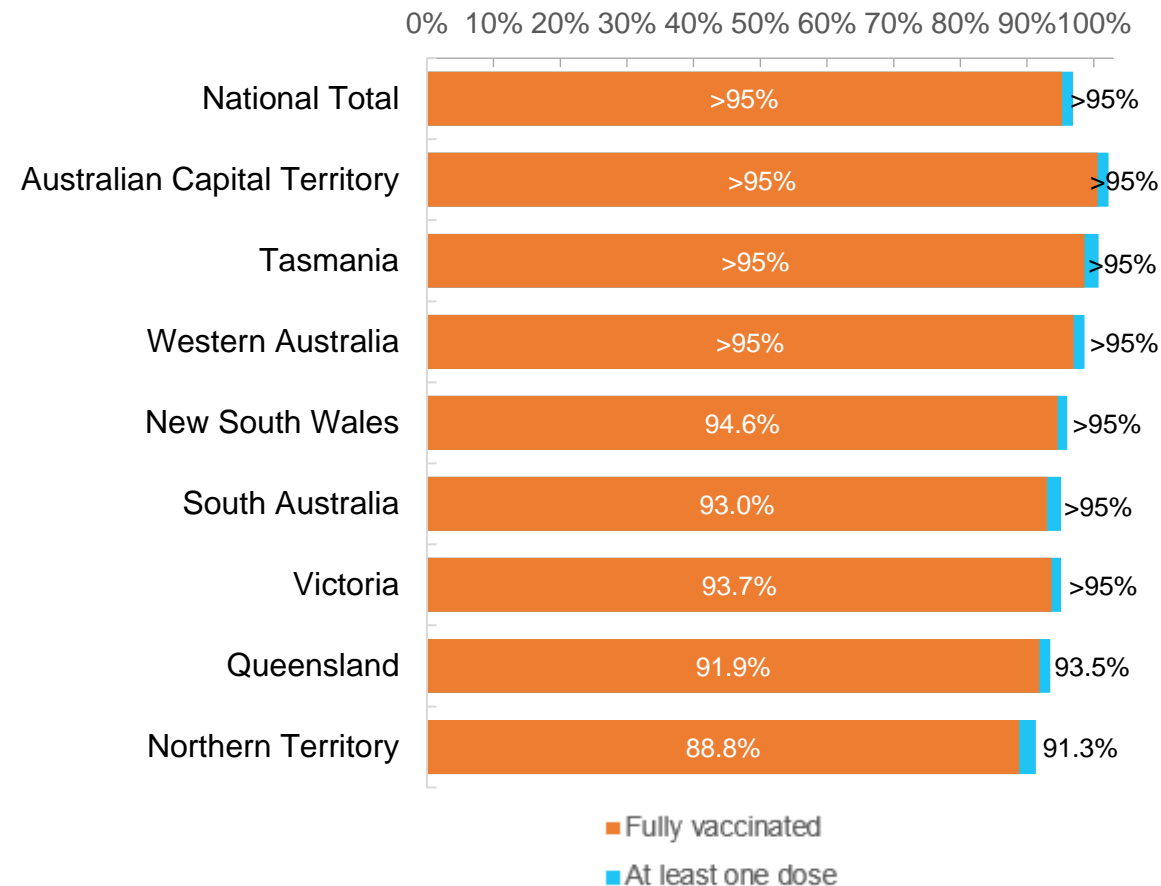
Australia's COVID-19
Vaccine Roadmap

Cumulative total doses administered vs eligible state populations*



*Not an indication of percentage vaccinated, numbers will exceed 100 due to multiple doses required per person of the population.
All doses are included for those aged 12 and above, and are based on vaccination provider location.

First and Second Doses by residential location



Aboriginal and Torres Strait Islander peoples

Number of people vaccinated

Data as at:
05 Apr 2022
Updated weekly

Australia's COVID-19
Vaccine Roadmap



436,589

people over the age of 16
have had at least one dose

84.3%

of people over the age of 16
have had at least one dose



415,873

people over the age of 16
are fully vaccinated

80.3%

of people over the age of 16 are
fully vaccinated



People aged 12 – 15 years

48,654

42,576

68.5%

At least one dose

59.9%

Fully vaccinated

178 Aboriginal community controlled health services (ACCHS)

0#

50

27

44

12

3

21

21

ACT

NSW

NT

QLD

SA

TAS

VIC

WA

Medicare Address State ^{##}	Individuals Dose 1	Individuals Dose 1 %	Individuals Dose 2	Individuals Dose 2 %
Australian Capital Territory	4,812	91.1%	4,691	88.8%
New South Wales	134,182	86.6%	131,000	84.6%
Northern Territory	42,007	89.4%	39,676	84.5%
Queensland	115,056	81.3%	109,175	77.1%
South Australia	19,747	79.7%	18,252	73.7%
Tasmania	13,790	88.3%	13,366	85.6%
Victoria	35,216	89.7%	34,393	87.6%
Western Australia	53,460	85.7%	48,749	78.1%
Unknown/Other Territories	18,319	66.9%	16,571	60.6%
Totals	436,589	84.3%	415,873	80.3%

Source: Australian Immunisation Register

*Identifying as Aboriginal and Torres Strait Islander is optional and the estimated population may be under reported.

**Includes all Aboriginal and Torres Strait Islander peoples who have received a vaccination, not limited to those administered in an ACCHS setting

#ACCHS in the ACT are currently operating as a Commonwealth Vaccine Clinics so not included to avoid double counting

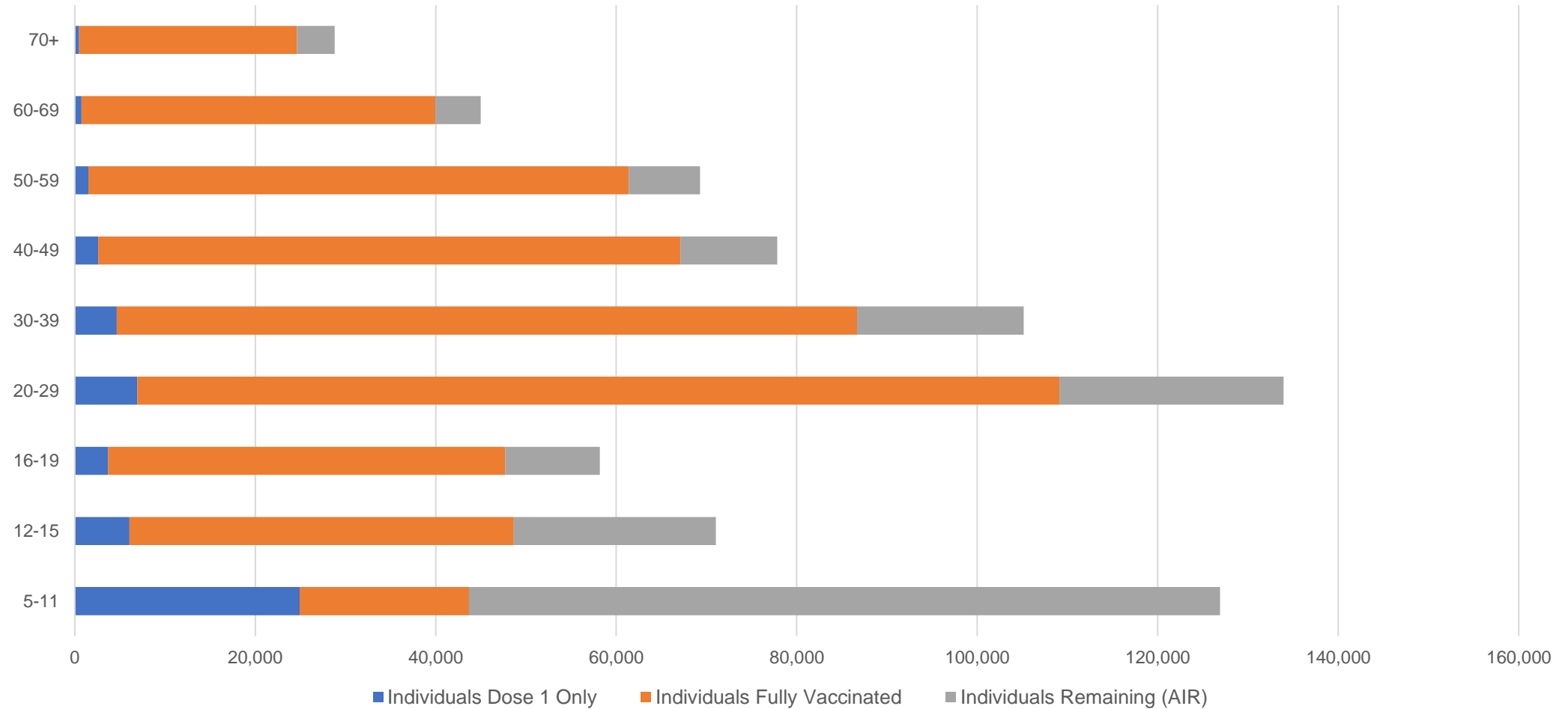
##The above table includes all identified Aboriginal and Torres Strait Islander people who are aged 16 and above by their state of residence.

Aboriginal and Torres Strait Islander peoples

Number of people vaccinated by age

Data as at:
05 Apr 2022
Updated weekly

Australia's COVID-19
Vaccine Roadmap



Source: Australian Immunisation Register

Commonwealth primary care

Data as at:
07 Apr 2022

Australia's COVID-19
Vaccine Roadmap



Primary care vaccine administration sites

5,793	128	178	3,587
GPs	CVCs	ACCHS	Pharmacies



34,731,030 total vaccine doses administered
primary care settings as at 07 April
+ 41,795 recorded in the last 24 hours

Primary care vaccinations by provider type

	Doses administered	Daily increase	7 day increase
General Practice* includes other Commonwealth	28,042,861	26,812	160,450
Pharmacy	6,688,169	14,983	91,543

NSW
12,019,751
(+14,030 daily increase)

VIC
8,651,725
(+8,555 daily increase)

QLD
6,672,942
(+7,673 daily increase)

WA
3,634,401
(+5,105 daily increase)

TAS
644,124
(+1,044 daily increase)

SA
2,058,428
(+2,261 daily increase)

ACT
545,511
(+576 daily increase)

NT
208,299
(+354 daily increase)

295,849

doses administered to persons
residing in other territories or with
missing residential information

*General practice includes Commonwealth Vaccination Clinics, Aboriginal Community Health Centres, Royal Flying Doctor Service and other Commonwealth vaccination facilities

Source: Australian Immunisation Register

Data as at:
07 Apr 2022

Commonwealth aged care and disability doses administered



1,268,683 (+ 302 last 24 hours)

Total vaccine doses administered in aged care and disability facilities as at 07 April

Number of doses administered as part of the Commonwealth aged and disability care rollout

NSW
558,559
(+27 daily increase)

VIC
234,785
(-7# daily increase)

QLD
201,824
(+135 daily increase)

WA
107,014
(+56 daily increase)

TAS
22,521
(+30 daily increase)

SA
83,878
(-6# daily increase)

ACT
16,802
(-4# daily increase)

NT
7,492
(+5 daily increase)

35,808

doses administered to persons
residing in other territories or with
missing residential information

*Sourced from the Australian Immunisation Register. Includes all persons vaccinated at participating residential aged care, disability and related industry settings.

**State level breakdown indicates the residential location and may not align to the state in which the vaccination occurred.

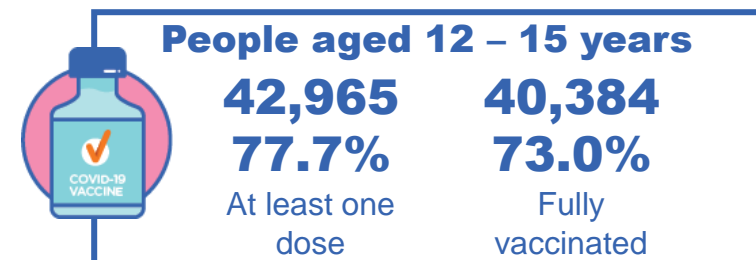
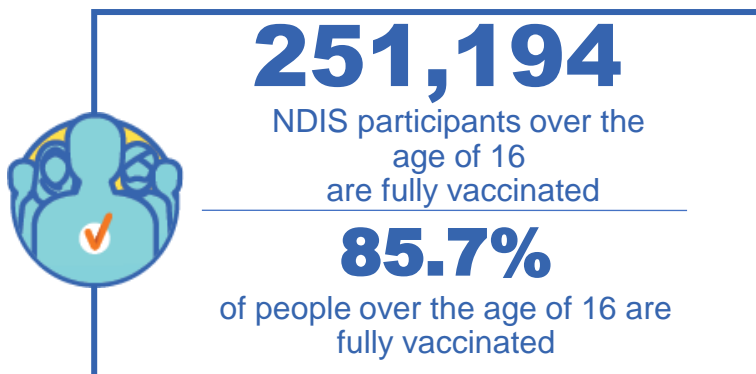
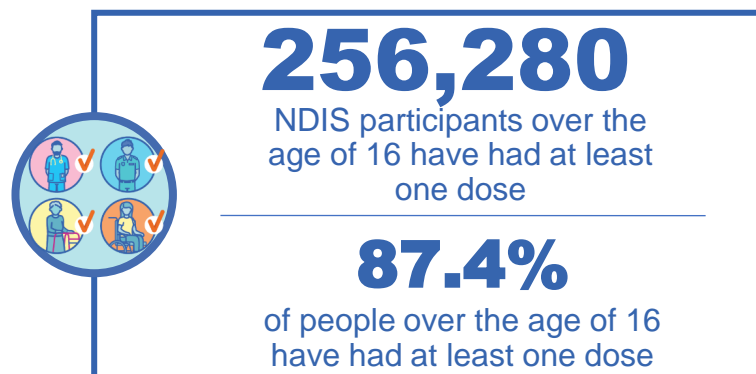
#Numbers are calculated as difference in daily cumulative reported numbers to allow for historical corrections in all data sources. This can occasionally result in negative numbers, such as for VIC, SA and ACT, where historical details about doses have been updated.

Source: Australian Immunisation Register

National Disability Insurance Scheme (NDIS) reported vaccinations

Data as at:
07 April 2022
Updated weekly

Australia's COVID-19
Vaccine Roadmap



NDIS participant vaccinations

	People aged 16+ with at least one dose	People aged 16+ fully vaccinated	% People aged 16+ with at least one dose	% People aged 16+ fully vaccinated
ACT	4,851	4,785	89.5%	88.2%
NSW	78,772	77,466	87.8%	86.3%
NT	2,218	2,143	77.7%	75.1%
QLD	50,484	49,445	85.8%	84.0%
SA	20,915	20,357	85.3%	83.0%
TAS	6,423	6,260	87.4%	85.2%
VIC	68,199	66,965	88.6%	87.0%
WA	24,418	23,773	88.7%	86.4%
National	256,280	251,194	87.4%	85.7%

Source: Linkage between National Disability Insurance Agency data and the Australian Immunisation Register. Total NDIS participant numbers as at 28th February. Australian Immunisation Register data as at 6 April. Includes all participants regardless of residence type.

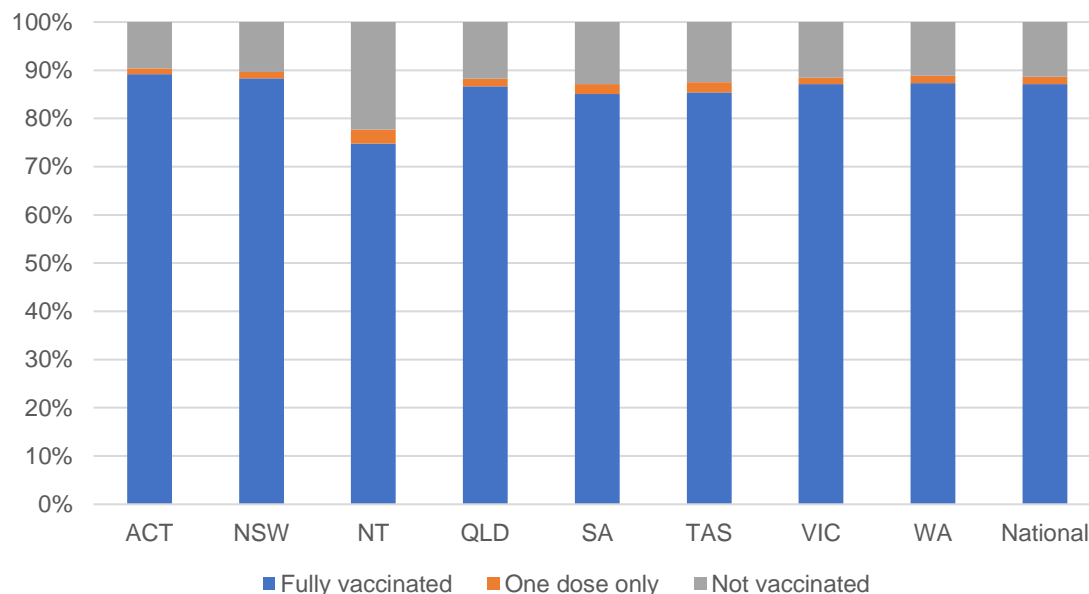
National Disability Insurance Scheme (NDIS) reported vaccinations

Data as at:
07 April 2022
Updated Weekly

Australia's COVID-19
Vaccine Roadmap

NATIONAL	Total people with at least one dose	People fully vaccinated	Total number of individuals in cohort	% People with at least one dose	% People fully vaccinated
NDIS participants living in disability accommodation	20,715	20,370	23,352	88.7%	87.2%

NDIS participants in disability and aged care accommodation



Source: Linkage between National Disability Insurance Agency data and the Australian Immunisation Register. Includes participants residing in disability accommodation only.
Source: Total NDIS participant numbers as at 28th February. Participant data as at 5 April. Australian Immunisation Register data as at 6 April. Worker data as at 7 April.

NDIS workforce vaccinations

	NDIS workers with at least one dose	NDIS workers fully vaccinated	% NDIS workers with at least one dose	% NDIS workers fully vaccinated
NSW	121,253	116,728	98.0%	94.4%
VIC	116,368	111,721	98.3%	94.4%
QLD	69,411	68,583	97.4%	96.3%
WA	32,942	31,103	98.5%	93.0%
SA	35,452	30,516	98.5%	84.7%
TAS	10,760	10,481	99.7%	97.1%
ACT	3,523	3,492	99.0%	98.2%
NT	3,431	3,271	99.4%	94.8%
TOTAL	393,140	375,895	98.2%	93.9%

Source: the NDIS Commission has established a requirement for registered NDIS providers who provide intensive disability support services to report on the vaccination status of workers they employ, or otherwise engage, to deliver NDIS-funded supports and services, and who are required to be vaccinated in accordance with in-force state and territory public health orders. The statistics reflect data reported to the NDIS Commission by registered NDIS providers and should be considered indicative and subject to change

Note: Some registered NDIS providers are yet to report on the vaccination status of their workforce. The NDIS Commission is working with those providers around reporting requirements.

Remaining workers not included include those exempt from vaccination requirements, workers whose vaccination status is not yet verified by the provider (such as workers on leave) and provider reporting anomalies.

Residential aged care vaccination rollout

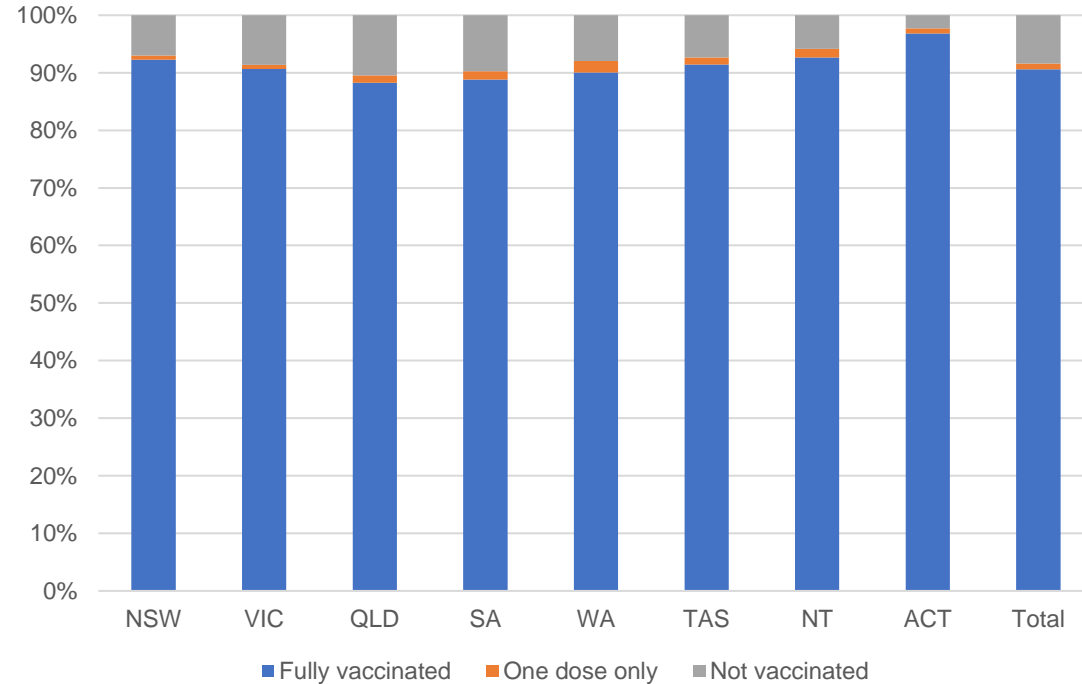
Residential aged care facilities status

173,600 **175,567**
People fully vaccinated People with at least one dose

Australia's COVID-19 Vaccine Roadmap

Data as at:
07 Apr 2022
Updated weekly

Aged care resident vaccinations



Aged care worker vaccinations

Jurisdictions	Total workers with at least one dose	Workers fully vaccinated	% Workers with at least one dose	% Workers fully vaccinated
NSW	77,178	77,174	97.6%	97.6%
VIC	65,400	65,397	95.3%	95.3%
QLD	46,103	46,097	95.7%	95.6%
SA	26,282	26,266	96.8%	96.7%
WA	23,991	23,990	99.3%	99.3%
TAS	7,505	7,500	98.6%	98.5%
NT	871	871	100.0%	100.0%
ACT	2,981	2,981	100.0%	100.0%
Total	250,311	250,276	96.8%	96.8%

Source: My Aged Care Portal vaccination progress

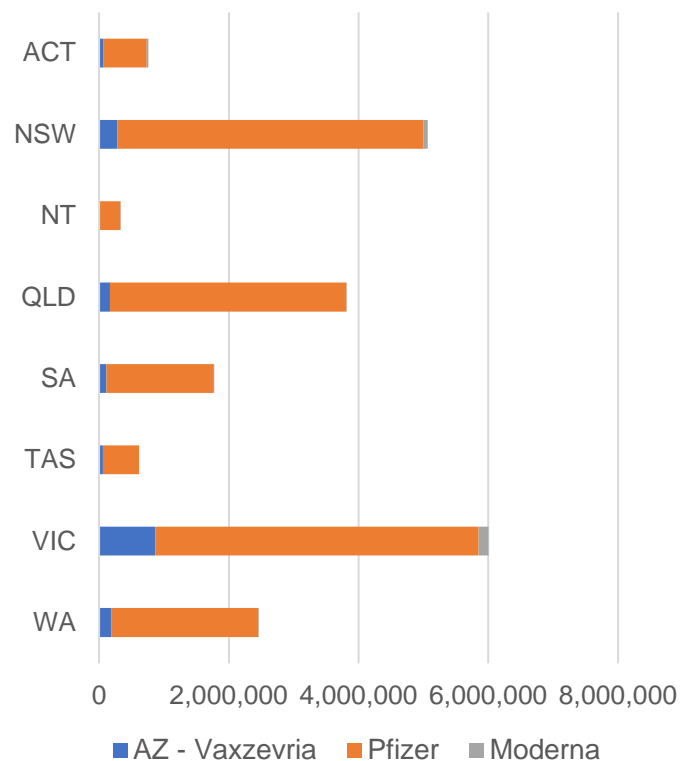
*Status updates are provided by facilities at least once per week. Reporting is updated Monday to Friday to encompass different facility updates being made on different days.

Data is sourced directly from Aged Care Service Providers and is not drawn or closely aligned with data from AIR due to inconsistencies and potential lags in uploading of records.

Data as at:
07 Apr 2022

Jurisdiction administered

Total vaccine doses administered in State and Territory clinics as at 07 April



20,827,226 total vaccine doses administered
in State and Territory clinics as at 07 April
+ **10,971** recorded in the last 24 hours
+ **89,132** recorded in the last 7 days

NSW
5,067,605
(+1,627 daily
increase)

VIC
6,006,538
(+2,110 daily
increase)

QLD
3,815,415
(+1,883 daily
increase)

WA
2,457,597
(+1,893 daily
increase)

TAS
613,814
(+261 daily
increase)

SA
1,777,880
(+1,437 daily
increase)

ACT
760,584
(+1,299 daily
increase)

NT
327,793
(+461 daily
increase)

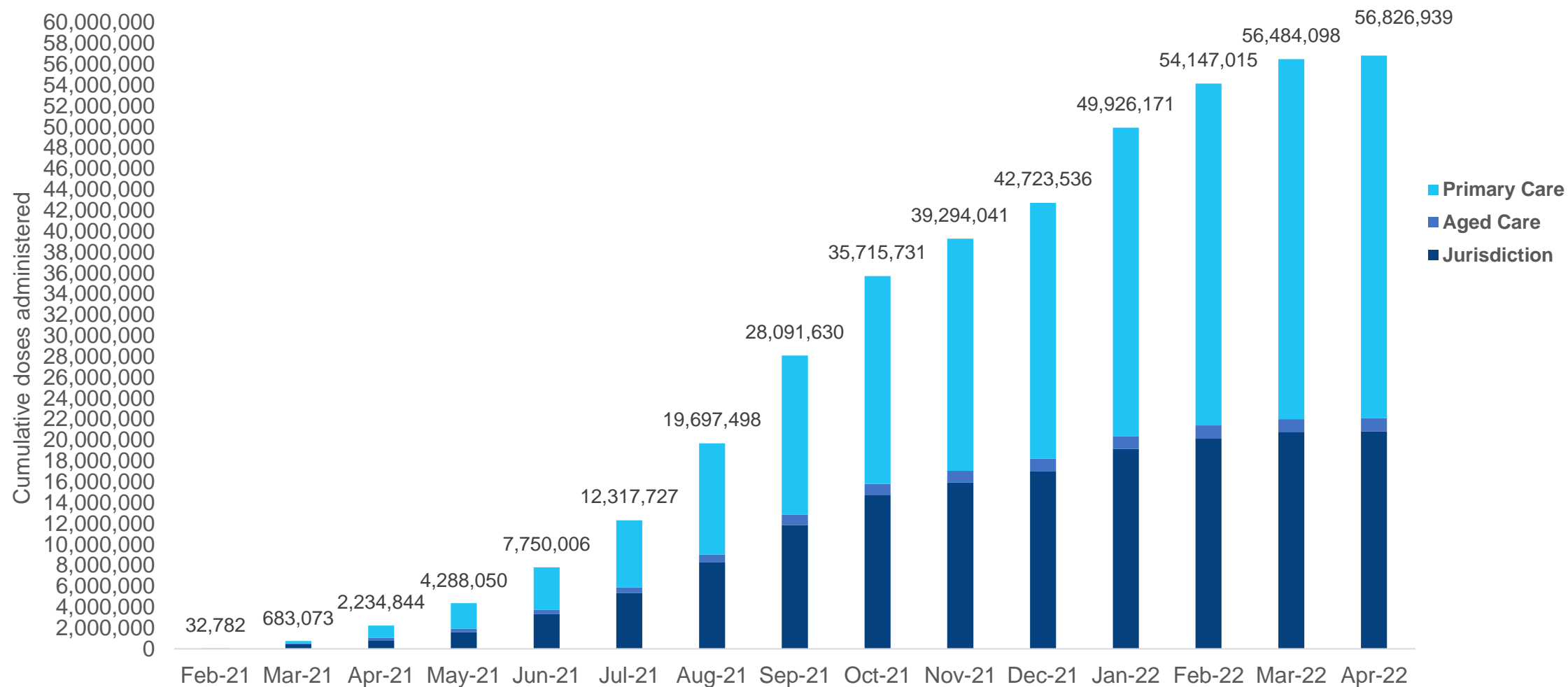
*Sourced from the Australian Immunisation Register. Numbers are calculated as difference in daily cumulative reported numbers to allow for historical corrections.

Source: Australian Immunisation Register

Cumulative doses administered by channel

Data as at:
07 Apr 2022

Australia's COVID-19
Vaccine Roadmap



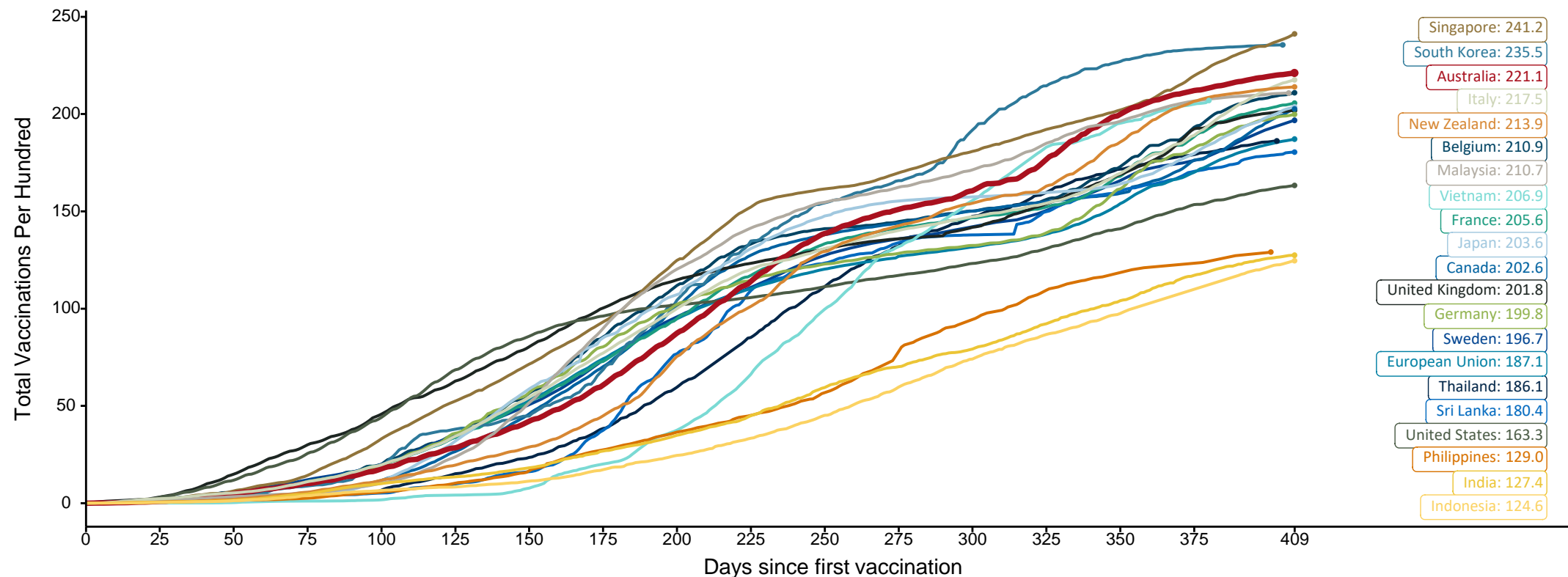
Source: Australian Immunisation Register

Doses at equivalent stages of rollout (Day 409)

Data as at:
07 Apr 2022

The x-axis is truncated at the length of Australia's vaccination program. Countries with intermittent reporting have had their doses per 100 imputed to Australia's current stage of rollout. Israel excluded as it is beyond scale of the graph

Cumulative doses administered (07 Apr): **56,826,939**



Note: From 11 January 2022, data for Australia includes all doses administered to people 5 and over. Prior to 11 January, data was for 12 and over.

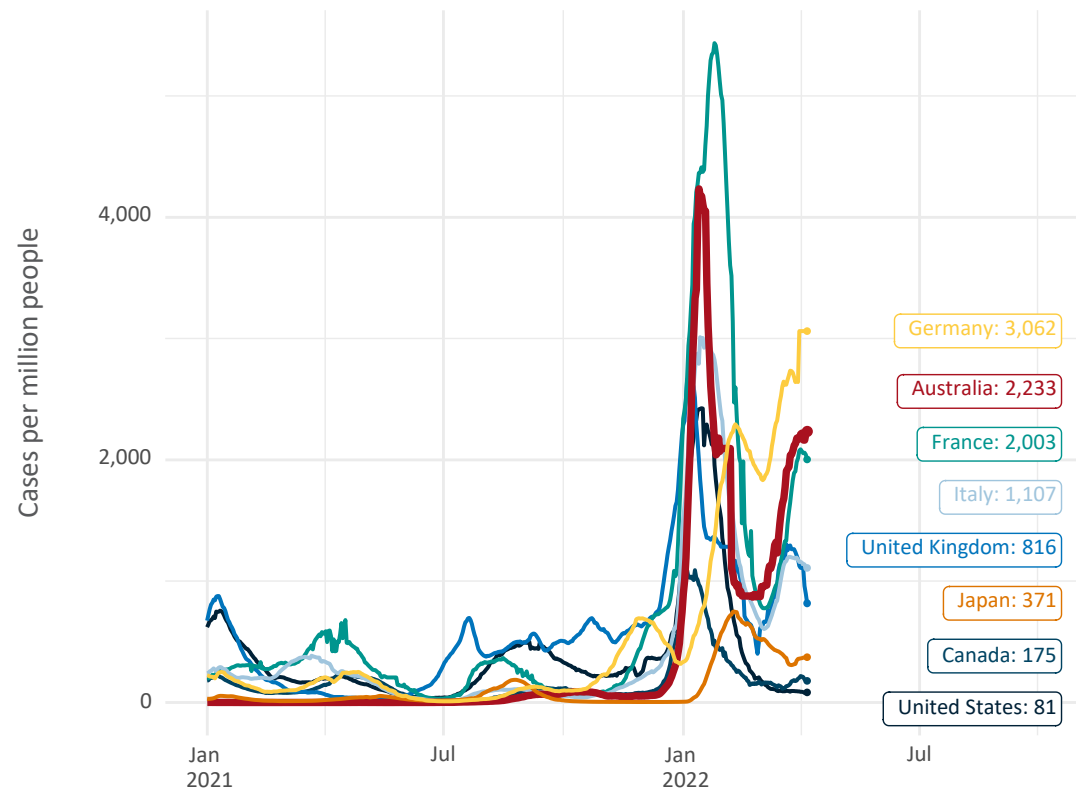
Source: Department of Health (Australia), Our World in Data (international)

Latest data: 07 April

Data as at:
07 Apr 2022

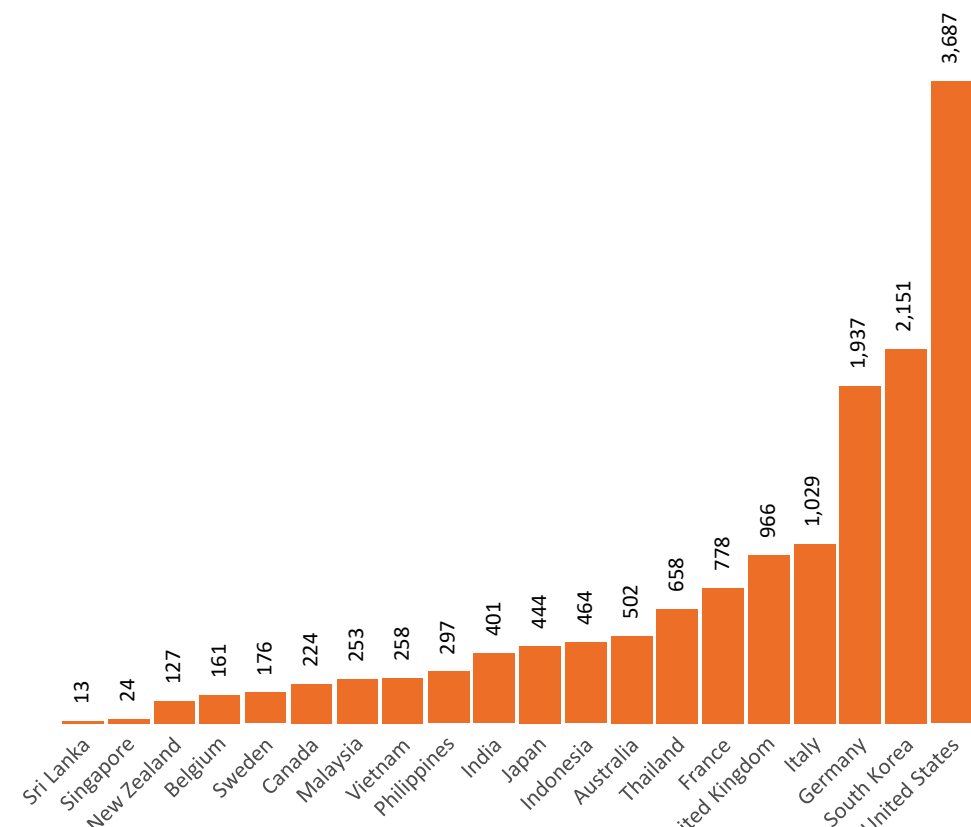
International data – COVID-19

New daily cases per million in 2021, Australia and G7 countries
Smoothed - 7 day average



Source: OWID
Data downloaded: 08 Apr 2022 08:06
Latest data: 06 Apr 2022

COVID-19 deaths in past 7 days - Australia and select countries



Source: OWID
Data downloaded: 08 Apr 2022 08:06
Latest data: 06 Apr 2022

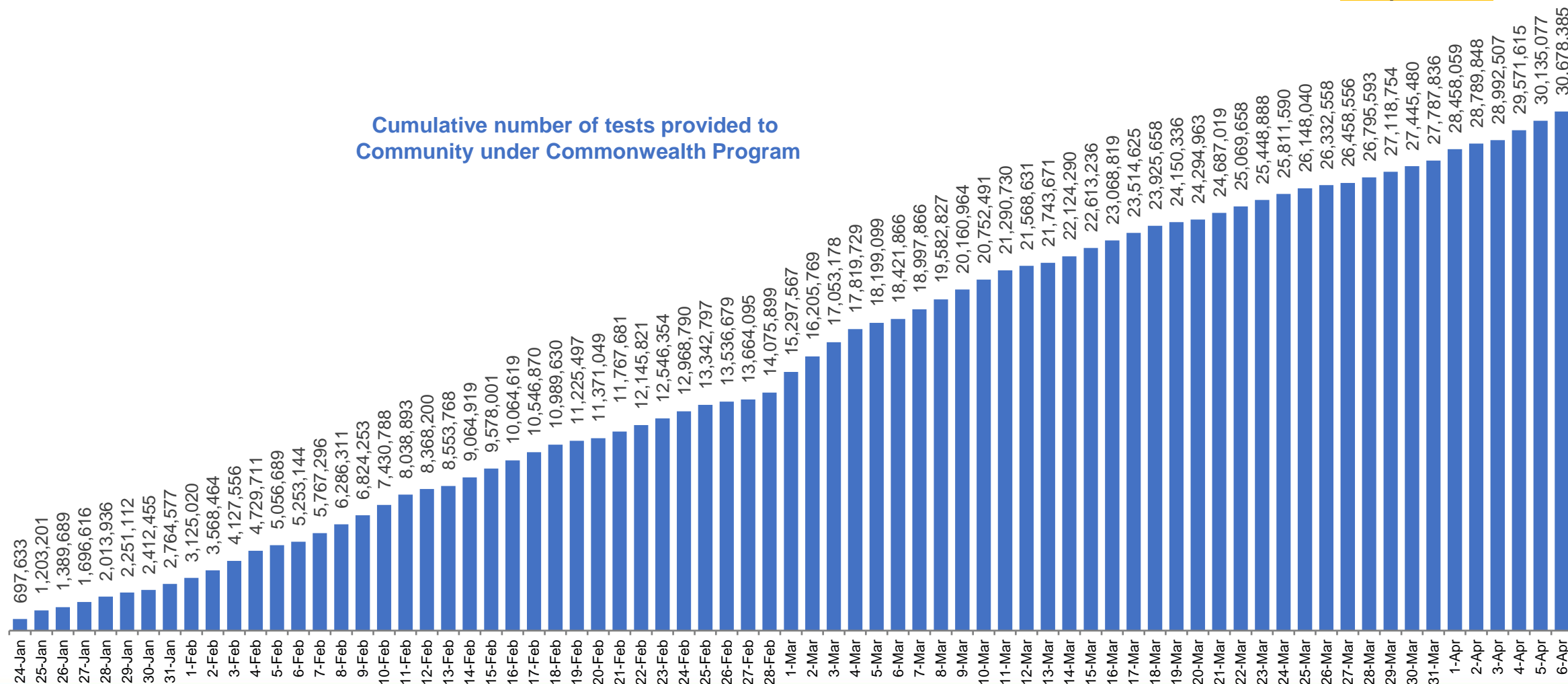
* NSW reported 331 additional deaths on 1 April 2022 due to a cross-check with NSW Registry of Births, Deaths and Marriages revealing additional deaths between 1 January 2020 and 23 March 2022.

Data as at:
6 April 2022

Concessional rapid antigen test program

5,629 pharmacies have delivered over **30.6 million rapid antigen tests** to more than **4.4m eligible concession card holders** under the Government's concessional rapid antigen test program.

Cumulative number of tests provided to
Community under Commonwealth Program



Pandemic Response Payments

Australia's COVID-19
Vaccine Roadmap

Data as at midnight: 3 Apr 2022
Updated weekly



COVID Disaster Payment:	5.89 million claims received - 2.19 million individuals paid a total of \$12.59 billion.
\$200 Income Support Payment:	353,000 claims received - 183,000 individuals paid a total of \$268.9 million.
Pandemic Leave Disaster Payment:	1.73 million claims received - 1,052,000 individuals paid a total of \$1.19 billion.



COVID Disaster Payment

assisting during a lockdown event in a Commonwealth hotspot.

Income Support Payment \$200

for income support recipients who lost at least 8 hours of work.

Pandemic Leave Disaster Payment

for those who have to self-isolate, quarantine or care.

For more information visit:
servicesaustralia.gov.au

COVID-19 DISASTER PAYMENTS

Northern Territory

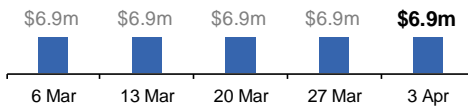
Lockdown (#3) from 16 Nov to 22 Nov
Claiming period ended 27 Dec

7,500 people have received at least one COVID Disaster Payment.

\$6.9m paid out as at 3 Apr 2022.

Nil paid in initial payments in the week ending 3 Apr 2022.

Cumulative payments made by Territory since activation on 25 Aug 2021.



Victoria

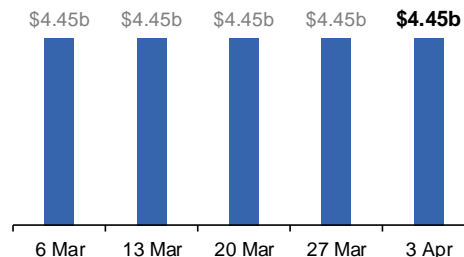
Lockdown (#6) from 6 Aug to 28 Oct
Claiming period ended 9 Dec

745,000 people have received at least one COVID Disaster Payment.

\$4.45b paid out as at 3 Apr 2022.

\$3,300 paid in initial and reoccurring payments in the week ending 3 Apr 2022.

Cumulative payments made by State since activation on 8 Jun 2021.



New South Wales

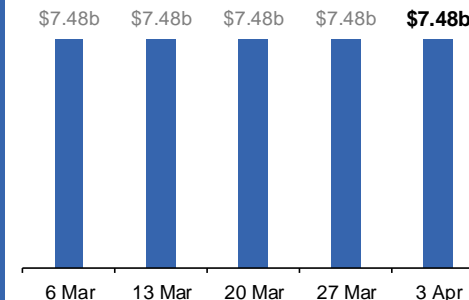
Lockdown from 24 Jun to 10 Oct
Claiming period ended 27 Nov

1.08m people have received at least one COVID Disaster Payment.

\$7.48b paid out as at 3 Apr 2022.

\$1,500 paid in initial and reoccurring payments in the week ending 3 Apr 2022.

Cumulative payments made by State since activation on 1 Jul 2021.



Australian Capital Territory

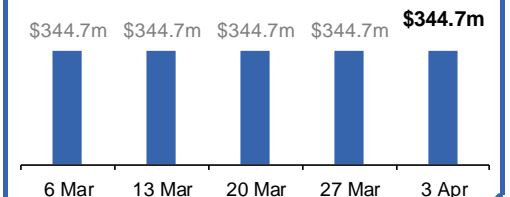
Lockdown from 12 Aug to 14 Oct
Claiming period ended 25 Nov

65,000 people have received at least one COVID Disaster Payment.

\$344.7m paid out as at 3 Apr 2022.

Nil paid in initial and reoccurring payments in the week ending 3 Apr 2022.

Cumulative payments made by Territory since activation on 20 Aug 2021.



Pandemic Response Payments (continued)

Data as at midnight: 3 Apr 2022
Updated weekly

COVID-19 DISASTER PAYMENTS

