



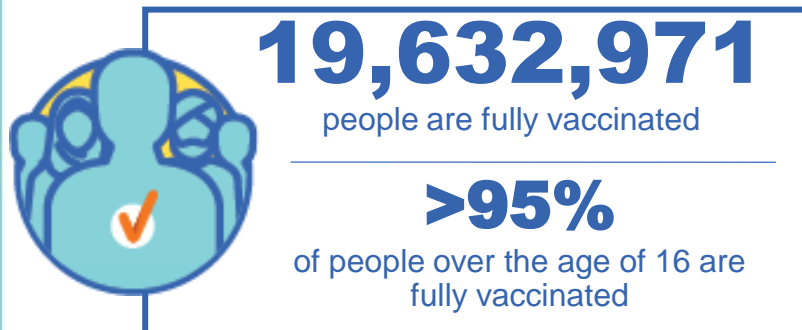
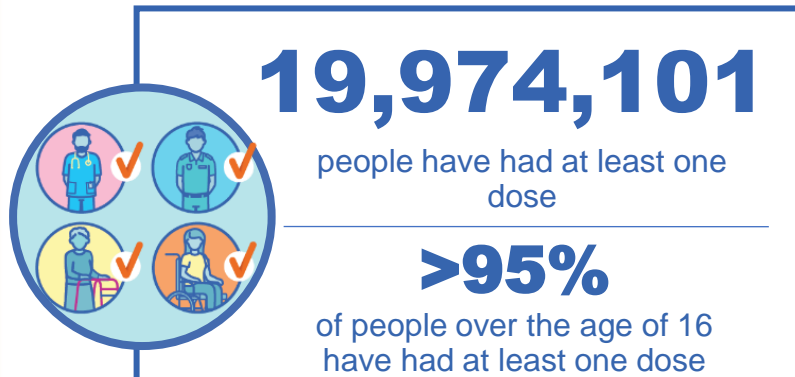
Australian Government
Operation COVID Shield

COVID-19 Vaccine Rollout

06 April 2022

Data as at:
05 Apr 2022

Total vaccine doses



56,719,978 total vaccine
doses administered nationally as at 05 April

+54,812 recorded in the last 24 hours

NSW
17,609,625
(+15,783 daily
increase)

VIC
14,947,931
(+12,215 daily
increase)

QLD
10,744,969
(+10,403 daily
increase)

WA
6,208,516
(+7,176 daily
increase)

TAS
1,275,611
(+1,030 daily
increase)

SA
3,907,371
(+3,626 daily
increase)

ACT
1,469,708
(+3,839 daily
increase)

NT
556,247
(+740 daily
increase)

*Administration state breakdown indicates state in which a vaccine was administered

**Overall dose count includes instances of more than three doses per person in a small number of cases.

Source: Australian Immunisation Register

Booster Vaccinations

Australia's COVID-19
Vaccine Roadmap

Data as at:
05 Apr 2022



194,376

Indigenous people who have
received more than two doses

52.2%

of eligible population (372,587)



163,902

Aged Care Residents who have
received more than two doses##

94.2%

of eligible population (173,944)



176,150

NDIS participants

20,765

NDIS residents

who have received more than two doses#

73.1%

of eligible population
(241,000)

87.7%

of eligible population
(23,000)



13,031,964 total people who
have received more than two doses nationally

+29,362 recorded in the last 24 hours

68.4% of people who are eligible (19,052,780)
have received more than two doses

NSW	People	% of Eligible
Cumulative	3,986,869	64.7%
Daily increase	9,084	

VIC	People	% of Eligible
Cumulative	3,515,911	70.0%
Daily increase	5,781	

QLD	People	% of Eligible
Cumulative	2,256,289	62.4%
Daily increase	5,752	

WA	People	% of Eligible
Cumulative	1,575,500	86.4%
Daily increase	4,133	

SA	People	% of Eligible
Cumulative	922,707	71.9%
Daily increase	2,171	

TAS	People	% of Eligible
Cumulative	296,300	71.5%
Daily increase	726	

ACT	People	% of Eligible
Cumulative	260,635	75.8%
Daily increase	359	

NT	People	% of Eligible
Cumulative	112,384	69.7%
Daily increase	422	

105,369

doses administered to persons
residing in other territories or with
missing residential information

*People may belong to multiple groups and could be represented in the above breakdowns multiple times.

NDIS participants data as at 3 April 2022.

Aged Care Residents data as at 5 April 2022.

Source: Australian Immunisation Register

Vaccinations by residential location

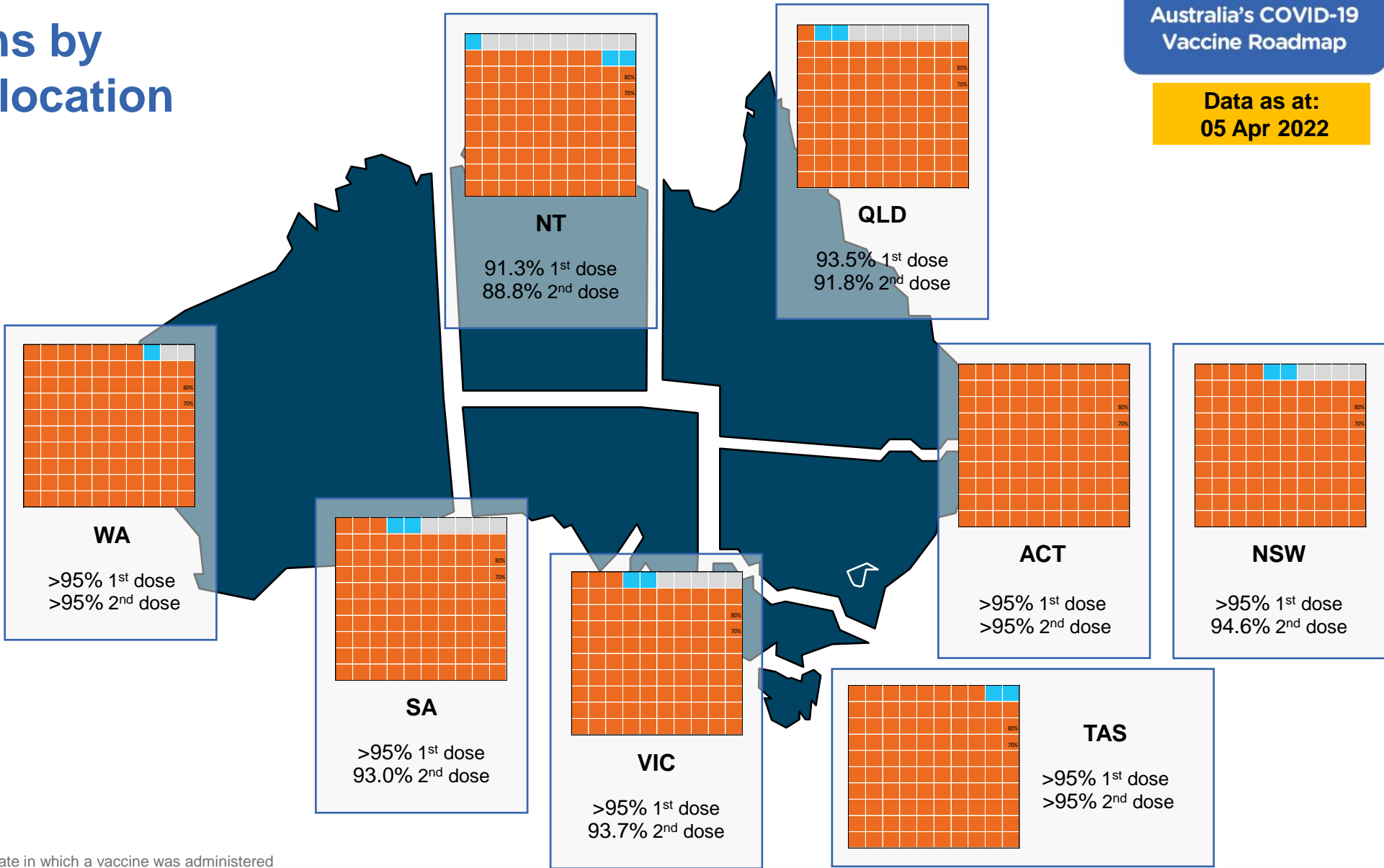
Data as at: 05 Apr 2022

First doses

Age	Today	4 weeks ago	8 weeks ago
16+	>95%	>95%	>95%
50+	>95%	>95%	>95%
70+	>95%	>95%	>95%

Fully vaccinated

Age	Today	4 weeks ago	8 weeks ago
16+	>95%	94.8%	94.2%
50+	>95%	>95%	>95%
70+	>95%	>95%	>95%



*Residential state may differ from the state in which a vaccine was administered

Commonwealth and Jurisdiction vaccine doses administered

Data as at:
05 Apr 2022



56,719,978 total vaccine
doses administered nationally as at 05 April
+ 54,812 recorded in the last 24 hours



20,805,243
doses administered by state
and territory facilities
+ 10,822
recorded in the last 24 hours

NSW	Jurisdictions	Commonwealth
Cumulative	5,064,266	12,545,359
Daily increase	1,568	14,215

TAS	Jurisdictions	Commonwealth
Cumulative	613,385	662,226
Daily increase	54	976

VIC	Jurisdictions	Commonwealth
Cumulative	6,001,856	8,946,075
Daily increase	2,593	9,622

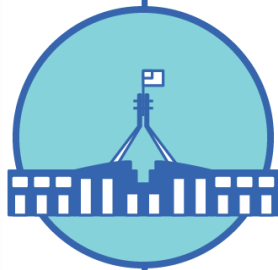
SA	Jurisdictions	Commonwealth
Cumulative	1,775,329	2,132,042
Daily increase	913	2,713

QLD	Jurisdictions	Commonwealth
Cumulative	3,811,429	6,933,540
Daily increase	2,142	8,261

ACT	Jurisdictions	Commonwealth
Cumulative	758,159	711,549
Daily increase	1,268	2,571

WA	Jurisdictions	Commonwealth
Cumulative	2,453,969	3,754,547
Daily increase	1,793	5,383

NT	Jurisdictions	Commonwealth
Cumulative	326,850	229,397
Daily increase	491	249



35,914,735
doses administered by
commonwealth facilities
+ 43,990
recorded in the last 24 hours

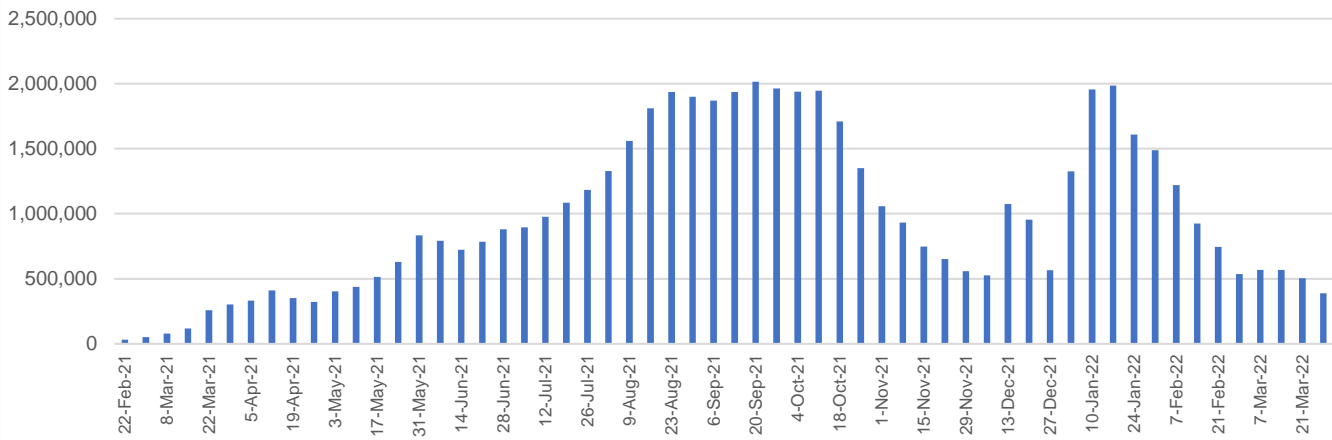
34,646,583 total vaccine doses
administered in primary care settings
1,268,152 total vaccine doses
administered in aged care and disability
settings

Vaccine milestone charts

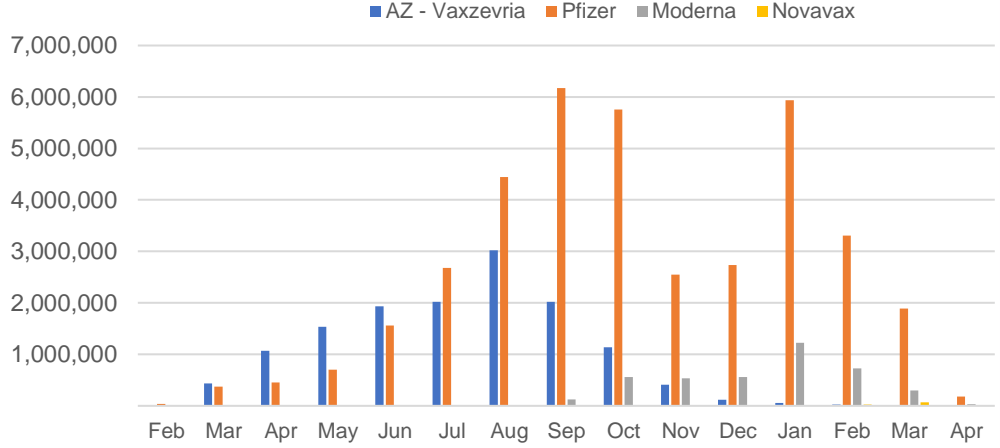
Data as at:
05 Apr 2022

Australia's COVID-19
Vaccine Roadmap

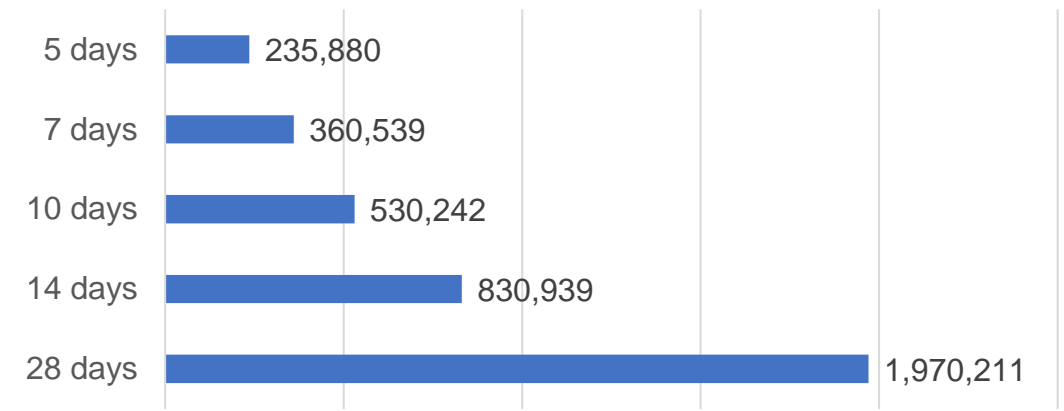
Doses Administered by Week



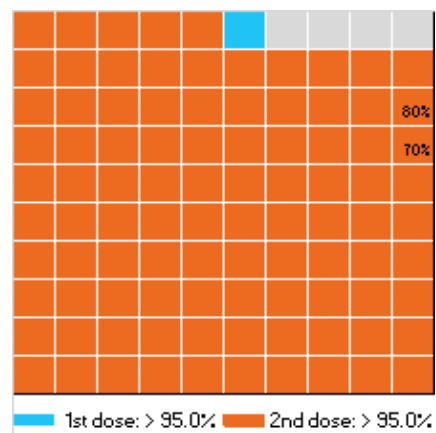
Doses by administration month and vaccine type



Doses Reported



Eligible population percentage coverage



*Sourced from the Australian Immunisation Register.

*Each square represents 1% of the national population. Squares are filled as milestones are achieved.

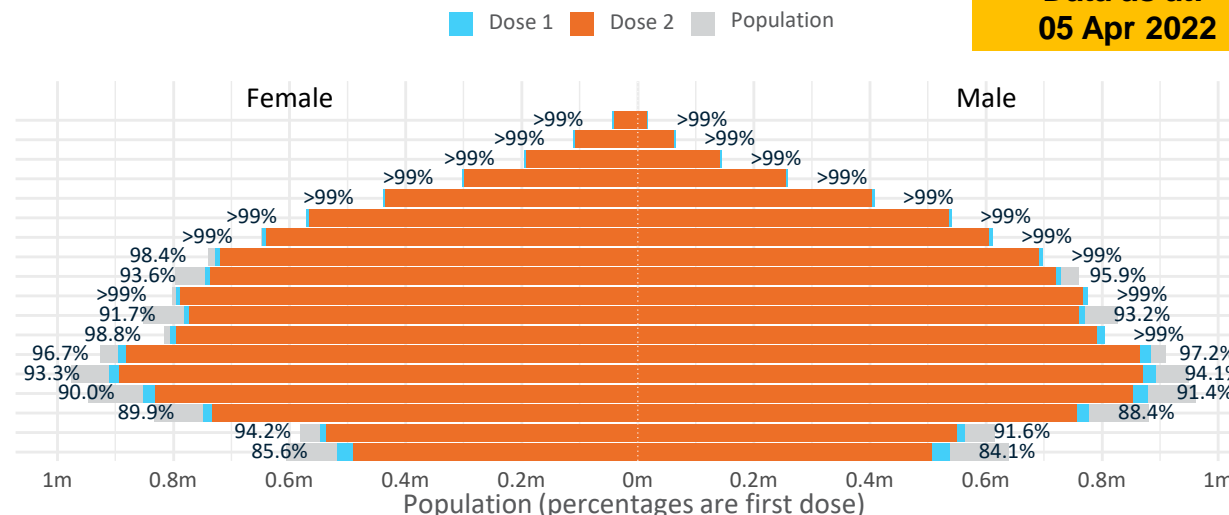
Data as at:
05 Apr 2022

Doses by age and sex

First and second doses by age and sex

	16+	50+	12-15	5-11
Dose 1	96.87% (19,974,101 doses / 20,619,959 people)	>99% (8,831,490 doses / 8,749,703 people)	84.89% (1,056,041 doses / 1,243,990 people)	52.50% (1,195,292 doses / 2,276,638 people)
Dose 2	95.21% (19,632,971 doses / 20,619,959 people)	>99% (8,722,534 doses / 8,749,703 people)	80.17% (997,305 doses / 1,243,990 people)	30.39% (691,770 doses / 2,276,638 people)

Age	Dose 1	Dose 2
95+	60,685 (>99%)	57,293 (>99%)
90-94	175,410 (>99%)	169,681 (>99%)
85-89	341,263 (>99%)	334,106 (>99%)
80-84	560,487 (>99%)	552,978 (>99%)
75-79	846,864 (>99%)	838,293 (>99%)
70-74	1,112,481 (>99%)	1,101,354 (>99%)
65-69	1,260,170 (>99%)	1,245,714 (>99%)
60-64	1,426,698 (>99%)	1,410,234 (98.2%)
55-59	1,475,338 (94.8%)	1,458,442 (93.8%)
50-54	1,572,094 (>99%)	1,554,439 (>99%)
45-49	1,552,274 (92.6%)	1,532,789 (91.4%)
40-44	1,612,045 (>99%)	1,586,984 (97.9%)
35-39	1,783,728 (97.2%)	1,750,803 (95.4%)
30-34	1,810,839 (94.1%)	1,768,328 (91.9%)
25-29	1,740,300 (91.3%)	1,692,519 (88.8%)
20-24	1,532,259 (89.5%)	1,492,674 (87.2%)
16-19	1,111,166 (92.9%)	1,086,340 (90.8%)
12-15	1,056,041 (84.9%)	997,305 (80.2%)



	AUS	ACT	NSW	NT	QLD	SA	TAS	VIC	WA
16 and over - dose 1	19,974,101	351,583	6,305,742	174,064	3,844,368	1,370,064	443,375	5,142,061	2,086,007
16 and over - dose 2	19,632,971	346,136	6,210,875	169,272	3,776,547	1,339,309	433,980	5,065,859	2,050,677
16 and over - population	20,619,959*	344,037	6,565,651	190,571	4,112,707	1,440,400	440,172	5,407,574	2,114,978
16 and over % with dose 1	96.87%	>99%	96.04%	91.34%	93.48%	95.12%	>99%	95.09%	98.63%
16 and over % with dose 2	95.21%	>99%	94.60%	88.82%	91.83%	92.98%	98.59%	93.68%	96.96%
5 to 11 - dose 1	1,195,292	31,864	355,728	13,178	208,751	84,201	28,817	325,322	139,783
5 to 11 - dose 2	691,770	23,125	210,619	6,533	120,873	49,909	20,666	186,655	70,077
5 to 11 - population	2,276,638	39,789	716,460	24,750	478,731	148,816	45,033	578,499	244,154
5 to 11 % with dose 1	52.50%	80.08%	49.65%	53.24%	43.61%	56.58%	63.99%	56.24%	57.25%
5 to 11 % with dose 2	30.39%	58.12%	29.40%	26.40%	25.25%	33.54%	45.89%	32.27%	28.70%
12 to 15 - dose 1	1,056,041	20,087	325,288	10,886	207,371	68,443	22,924	275,927	115,643
12 to 15 - dose 2	997,305	19,485	310,239	9,776	193,828	64,643	21,750	263,384	105,937
12 to 15 - population	1,243,990	19,693	390,330	13,060	270,146	82,747	26,308	308,611	132,869
12 to 15 % with dose 1	84.89%	>99%	83.34%	83.35%	76.76%	82.71%	87.14%	89.41%	87.04%
12 to 15 % with dose 2	80.17%	98.94%	79.48%	74.85%	71.75%	78.12%	82.67%	85.34%	79.73%

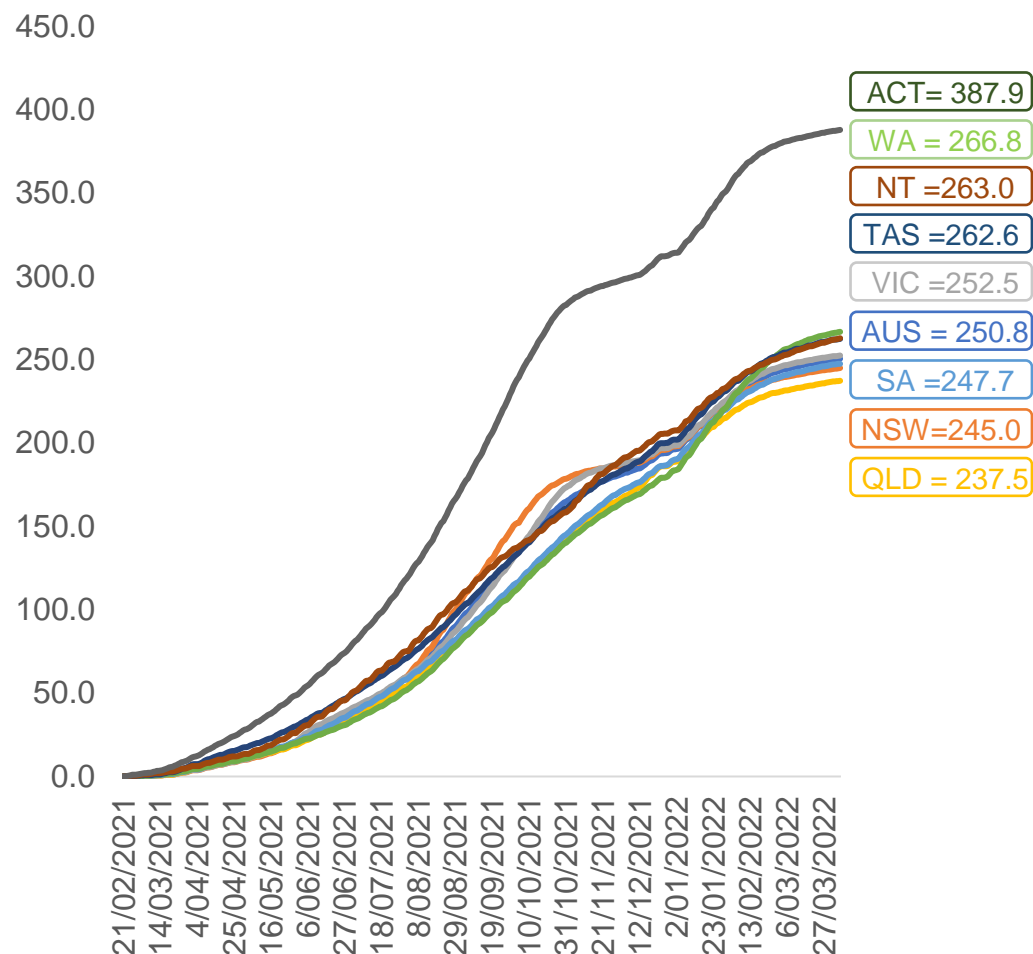
*National population will not equal sum of listed jurisdictions due to a small number of people counted in national population residing in some 'other' territories. Sum of state doses will not add to national total as some records are unable to be geocoded to a State or Territory.
Doses sourced from Australian Immunisation Register, population from ABS ERP June 2020

Vaccinations by location

Data as at:
05 Apr 2022

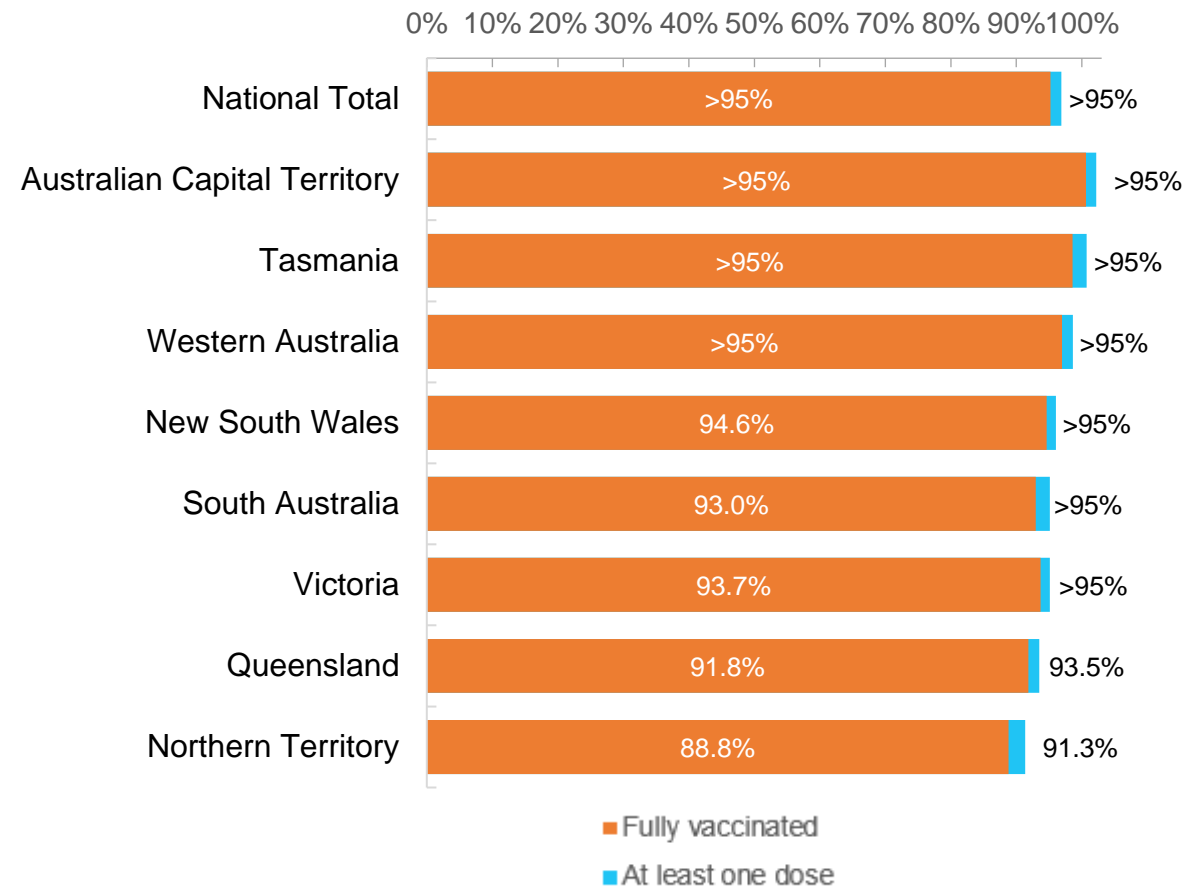
Australia's COVID-19
Vaccine Roadmap

Cumulative total doses administered vs eligible state populations*



*Not an indication of percentage vaccinated, numbers will exceed 100 due to multiple doses required per person of the population.
All doses are included for those aged 12 and above, and are based on vaccination provider location.

First and Second Doses by residential location



Aboriginal and Torres Strait Islander peoples

Number of people vaccinated

Data as at:
05 Apr 2022
Updated weekly

Australia's COVID-19
Vaccine Roadmap



436,589

people over the age of 16
have had at least one dose

84.3%

of people over the age of 16
have had at least one dose



415,873

people over the age of 16
are fully vaccinated

80.3%

of people over the age of 16 are
fully vaccinated



People aged 12 – 15 years

48,654

42,576

68.5%

At least one dose

59.9%

Fully vaccinated

178 Aboriginal community controlled health services (ACCHS)

0#

50

27

44

12

3

21

21

ACT

NSW

NT

QLD

SA

TAS

VIC

WA

Medicare Address State ^{##}	Individuals Dose 1	Individuals Dose 1 %	Individuals Dose 2	Individuals Dose 2 %
Australian Capital Territory	4,812	91.1%	4,691	88.8%
New South Wales	134,182	86.6%	131,000	84.6%
Northern Territory	42,007	89.4%	39,676	84.5%
Queensland	115,056	81.3%	109,175	77.1%
South Australia	19,747	79.7%	18,252	73.7%
Tasmania	13,790	88.3%	13,366	85.6%
Victoria	35,216	89.7%	34,393	87.6%
Western Australia	53,460	85.7%	48,749	78.1%
Unknown/Other Territories	18,319	66.9%	16,571	60.6%
Totals	436,589	84.3%	415,873	80.3%

Source: Australian Immunisation Register

*Identifying as Aboriginal and Torres Strait Islander is optional and the estimated population may be under reported.

**Includes all Aboriginal and Torres Strait Islander peoples who have received a vaccination, not limited to those administered in an ACCHS setting

#ACCHS in the ACT are currently operating as a Commonwealth Vaccine Clinics so not included to avoid double counting

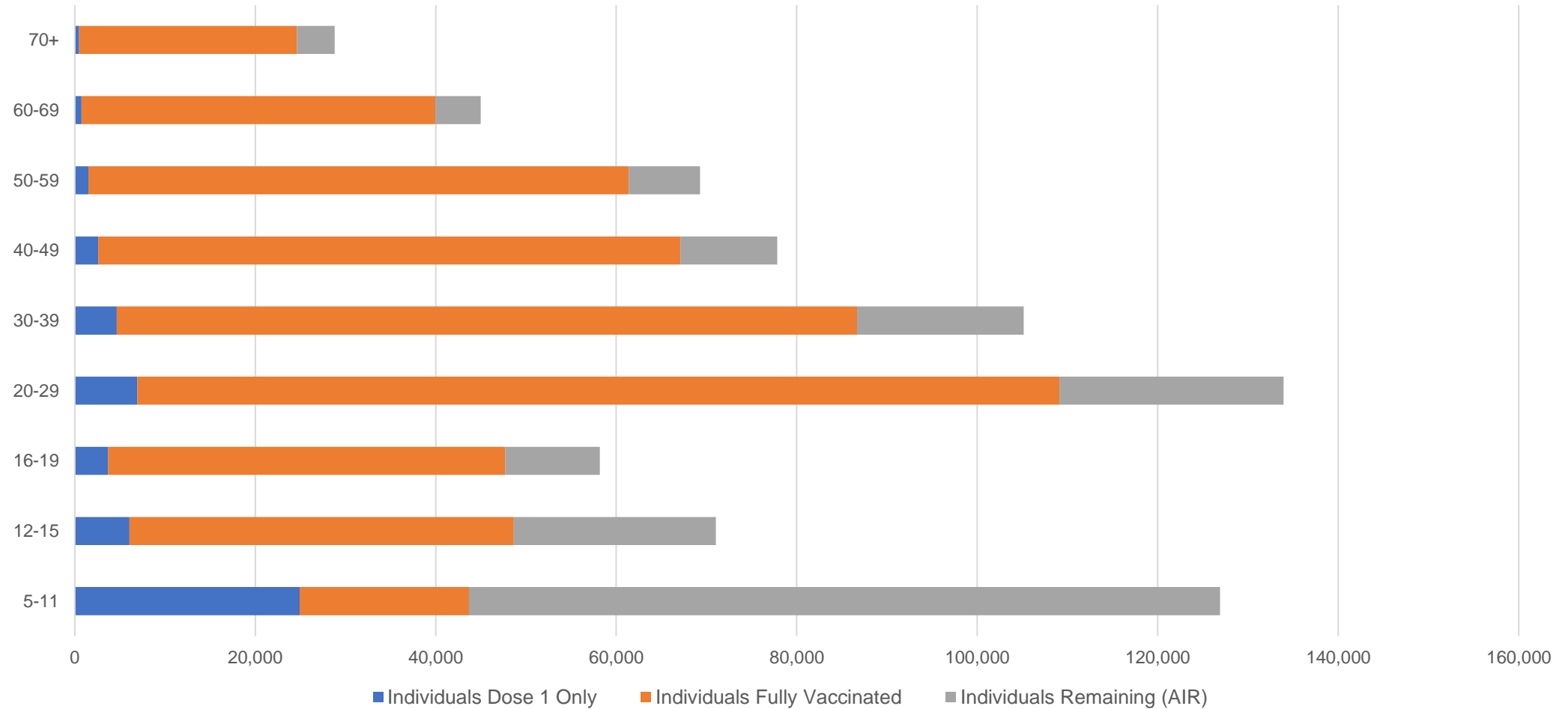
##The above table includes all identified Aboriginal and Torres Strait Islander people who are aged 16 and above by their state of residence.

Aboriginal and Torres Strait Islander peoples

Number of people vaccinated by age

Data as at:
05 Apr 2022
Updated weekly

Australia's COVID-19
Vaccine Roadmap



Source: Australian Immunisation Register

Commonwealth primary care

Data as at:
05 Apr 2022

Australia's COVID-19
Vaccine Roadmap



Primary care vaccine administration sites

5,793	128	178	3,587
GPs	CVCs	ACCHS	Pharmacies



34,646,583 total vaccine doses administered
primary care settings as at 05 April
+ 43,817 recorded in the last 24 hours

Primary care vaccinations by provider type

	Doses administered	Daily increase	7 day increase
General Practice* includes other Commonwealth	27,988,310	27,701	166,553
Pharmacy	6,658,273	16,116	96,274

NSW
11,991,975
(+13,937 daily increase)

VIC
8,633,962
(+9,147 daily increase)

QLD
6,657,088
(+8,873 daily increase)

WA
3,624,549
(+4,947 daily increase)

TAS
642,174
(+961 daily increase)

SA
2,053,901
(+2,768 daily increase)

ACT
544,348
(+568 daily increase)

NT
207,601
(+127 daily increase)

290,985

doses administered to persons
residing in other territories or with
missing residential information

*General practice includes Commonwealth Vaccination Clinics, Aboriginal Community Health Centres, Royal Flying Doctor Service and other Commonwealth vaccination facilities

Source: Australian Immunisation Register

Data as at:
05 Apr 2022

Commonwealth aged care and disability doses administered



1,268,152 (+ 173 last 24 hours)

Total vaccine doses administered in aged care and disability facilities as at 05 April

Number of doses administered as part of the Commonwealth aged and disability care rollout

NSW
558,502
(+9 daily increase)

VIC
234,777
(-12 daily increase)

QLD
201,652
(-5 daily increase)

WA
106,936
(+36 daily increase)

TAS
22,496
(+0 daily increase)

SA
83,868
(+18 daily increase)

ACT
16,809
(-7 daily increase)

NT
7,482
(+4 daily increase)

35,630

doses administered to persons residing in other territories or with missing residential information

*Sourced from the Australian Immunisation Register. Includes all persons vaccinated at participating residential aged care, disability and related industry settings.

**State level breakdown indicates the residential location and may not align to the state in which the vaccination occurred.

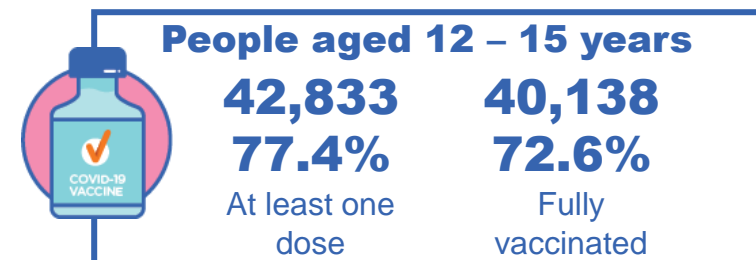
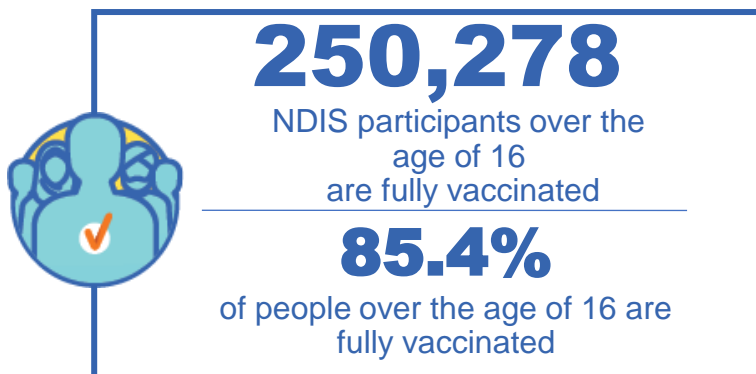
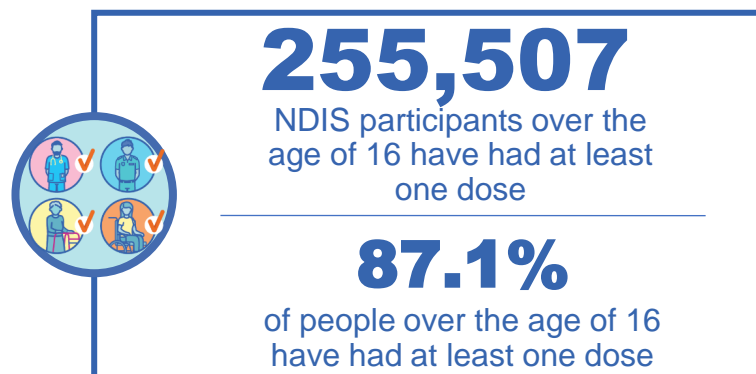
*Numbers are calculated as difference in daily cumulative reported numbers to allow for historical corrections in all data sources. This can occasionally result in negative numbers, such as for VIC, QLD and ACT, where historical details about doses have been updated.

Source: Australian Immunisation Register

National Disability Insurance Scheme (NDIS) reported vaccinations

Data as at:
31 March 2022
Updated weekly

Australia's COVID-19
Vaccine Roadmap



NDIS participant vaccinations

	People aged 16+ with at least one dose	People aged 16+ fully vaccinated	% People aged 16+ with at least one dose	% People aged 16+ fully vaccinated
ACT	4,840	4,774	89.2%	88.0%
NSW	78,610	77,294	87.6%	86.2%
NT	2,208	2,133	77.4%	74.8%
QLD	50,315	49,233	85.5%	83.7%
SA	20,809	20,248	84.8%	82.5%
TAS	6,408	6,238	87.2%	84.9%
VIC	68,002	66,752	88.3%	86.7%
WA	24,315	23,606	88.3%	85.7%
National	255,507	250,278	87.1%	85.4%

Source: Linkage between National Disability Insurance Agency data and the Australian Immunisation Register. Total NDIS participant numbers as at 28th February. Australian Immunisation Register data as at 30 March. Includes all participants regardless of residence type.

National Disability Insurance Scheme (NDIS) reported vaccinations

Data as at:
31 March 2022
Updated Weekly

Australia's COVID-19
Vaccine Roadmap

NATIONAL	Total people with at least one dose	People fully vaccinated	Total number of individuals in cohort	% People with at least one dose	% People fully vaccinated
NDIS participants living in disability accommodation	20,686	20,315	23,352	88.6%	87.0%

NDIS participants in disability and aged care accommodation



Source: Linkage between National Disability Insurance Agency data and the Australian Immunisation Register. Includes participants residing in disability accommodation only.

Source: Total NDIS participant numbers as at 28th February. Participant data as at 29 March. Australian Immunisation Register data as at 30 March. Worker data as at 31 March.

NDIS workforce vaccinations

	NDIS workers with at least one dose	NDIS workers fully vaccinated	% NDIS workers with at least one dose	% NDIS workers fully vaccinated
NSW	121,300	117,509	98.1%	95.1%
VIC	116,416	111,987	98.3%	94.6%
QLD	69,423	68,592	97.5%	96.3%
WA	32,844	30,848	98.6%	92.6%
SA	35,416	31,990	98.5%	89.0%
TAS	10,778	10,503	99.7%	97.2%
ACT	3,523	3,492	99.1%	98.2%
NT	3,378	3,205	97.4%	92.4%
TOTAL	393,078	378,126	98.2%	94.5%

Source: the NDIS Commission has established a requirement for registered NDIS providers who provide intensive disability support services to report on the vaccination status of workers they employ, or otherwise engage, to deliver NDIS-funded supports and services, and who are required to be vaccinated in accordance with in-force state and territory public health orders. The statistics reflect data reported to the NDIS Commission by registered NDIS providers and should be considered indicative and subject to change

Note: Some registered NDIS providers are yet to report on the vaccination status of their workforce. The NDIS Commission is working with those providers around reporting requirements.

Remaining workers not included include those exempt from vaccination requirements, workers whose vaccination status is not yet verified by the provider (such as workers on leave) and provider reporting anomalies.

Residential aged care vaccination rollout

Australia's COVID-19
Vaccine Roadmap

Data as at:
31 Mar 2022
Updated weekly

Residential aged care facilities status

100%

Commonwealth facilities
visited (2,537 planned sites)

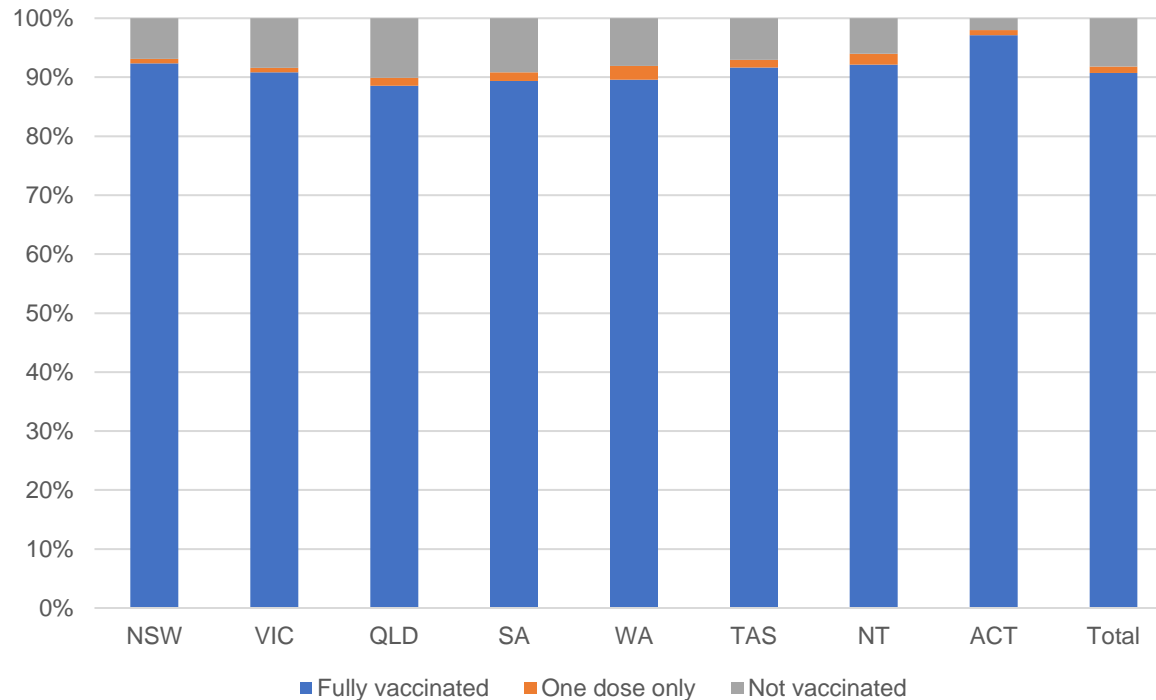
173,909

People fully vaccinated

176,002

People with at least
one dose

Aged care resident vaccinations



Aged care worker vaccinations

Jurisdictions	Total workers with at least one dose	Workers fully vaccinated	% Workers with at least one dose	% Workers fully vaccinated
NSW	77,436	77,331	97.6%	97.5%
VIC	65,380	65,378	95.3%	95.3%
QLD	46,376	46,370	95.2%	95.2%
SA	26,364	26,344	97.6%	97.5%
WA	23,838	23,836	98.9%	98.9%
TAS	7,645	7,645	100.0%	100.0%
NT	847	847	100.0%	100.0%
ACT	2,987	2,987	100.0%	100.0%
Total	250,873	250,738	96.8%	96.7%

Source: My Aged Care Portal vaccination progress

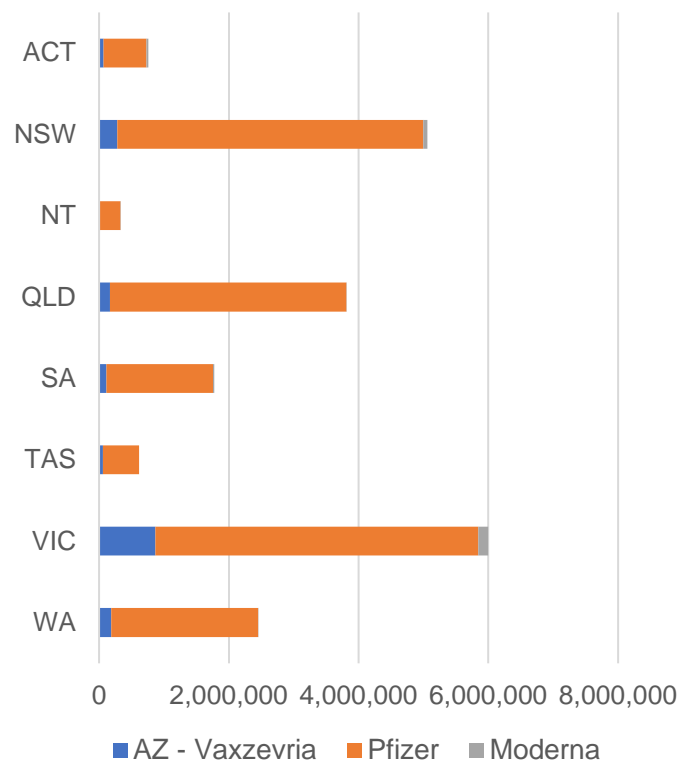
*Status updates are provided by facilities at least once per week. Reporting is updated Monday to Friday to encompass different facility updates being made on different days.

Data is sourced directly from Aged Care Service Providers and is not drawn or closely aligned with data from AIR due to inconsistencies and potential lags in uploading of records.

Data as at:
05 Apr 2022

Jurisdiction administered

Total vaccine doses administered in State and Territory clinics as at 05 April



20,805,243 total vaccine doses administered
in State and Territory clinics as at 05 April
+ **10,822** recorded in the last 24 hours
+ **95,202** recorded in the last 7 days

NSW
5,064,266
(+1,568 daily
increase)

VIC
6,001,856
(+2,593 daily
increase)

QLD
3,811,429
(+2,142 daily
increase)

WA
2,453,969
(+1,793 daily
increase)

TAS
613,385
(+54 daily
increase)

SA
1,775,329
(+913 daily
increase)

ACT
758,159
(+1,268 daily
increase)

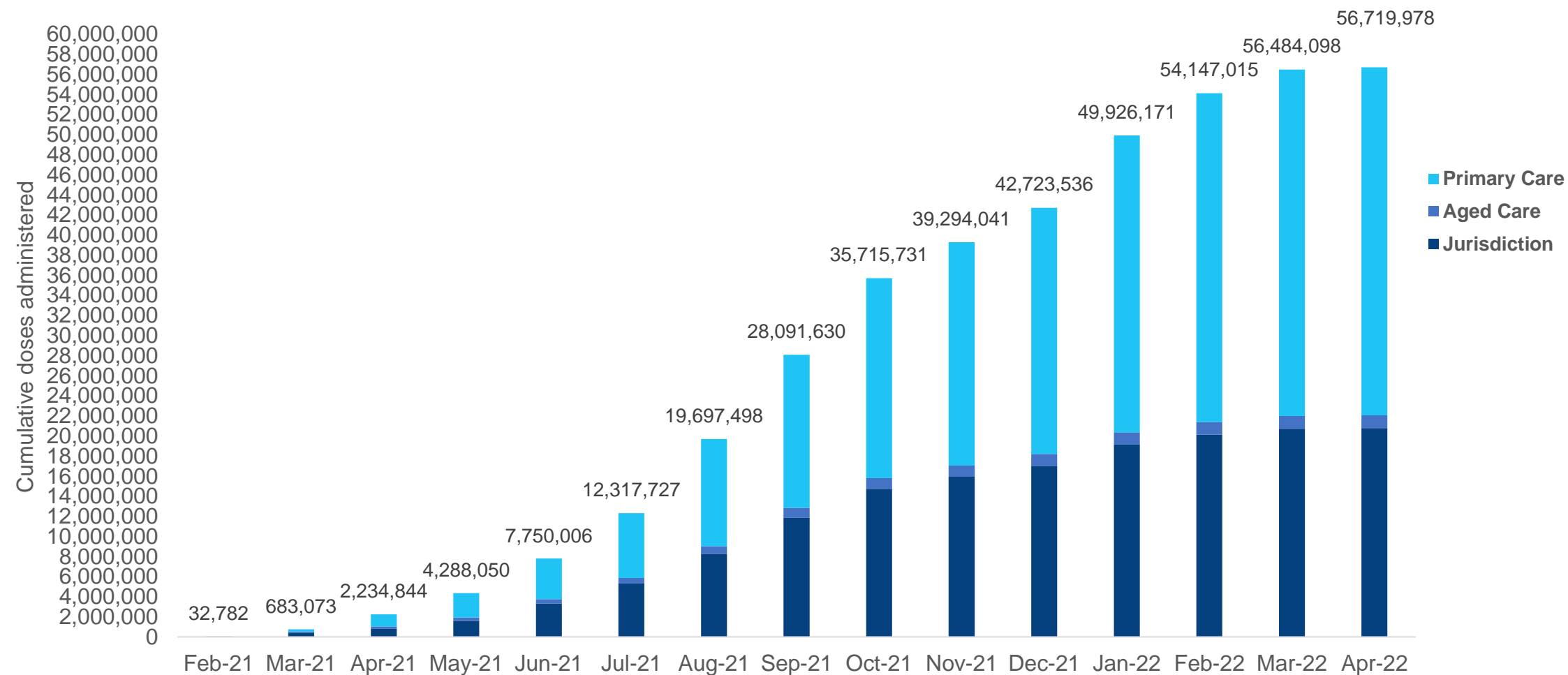
NT
326,850
(+491 daily
increase)

*Sourced from the Australian Immunisation Register. Numbers are calculated as difference in daily cumulative reported numbers to allow for historical corrections.

Source: Australian Immunisation Register

Cumulative doses administered by channel

Data as at:
05 Apr 2022



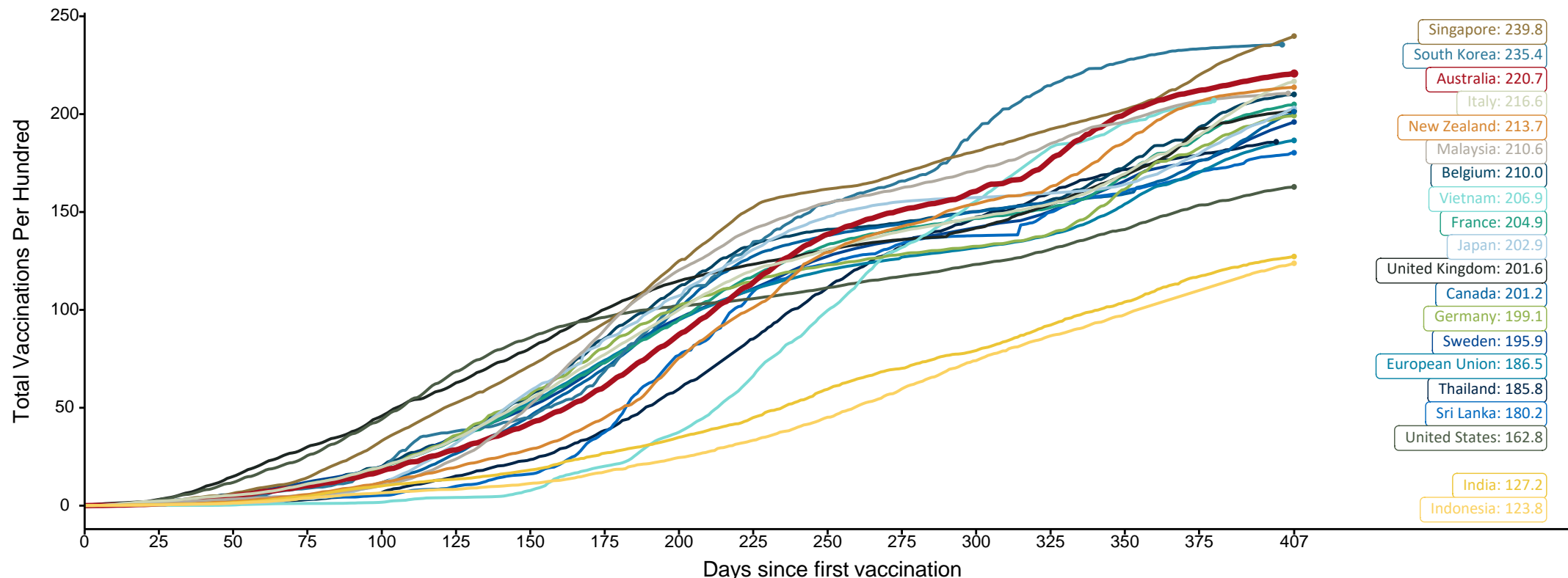
Source: Australian Immunisation Register

Doses at equivalent stages of rollout (Day 407)

Data as at:
05 Apr 2022

The x-axis is truncated at the length of Australia's vaccination program. Countries with intermittent reporting have had their doses per 100 imputed to Australia's current stage of rollout. Israel excluded as it is beyond scale of the graph

Cumulative doses administered (05 Apr): **56,719,978**



Note: From 11 January 2022, data for Australia includes all doses administered to people 5 and over. Prior to 11 January, data was for 12 and over. The Philippines has been removed today as revisions are being made to their numbers.

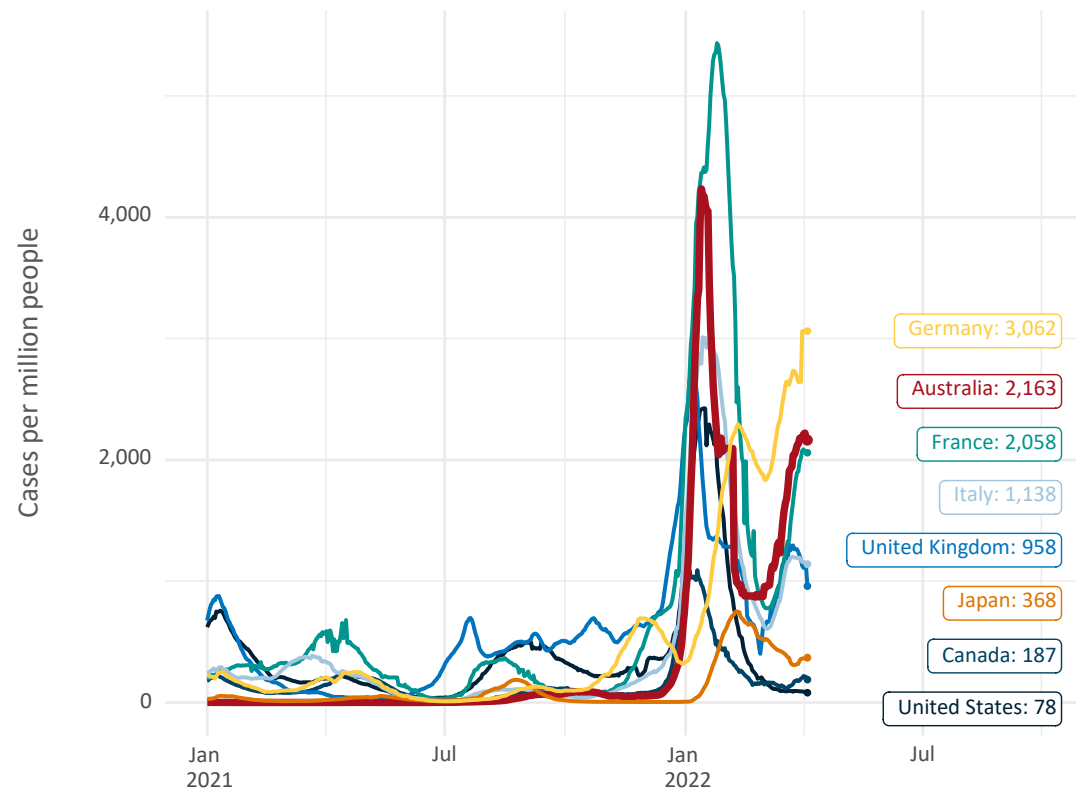
Source: Department of Health (Australia), Our World in Data (international)

Latest data: 05 April

Data as at:
05 Apr 2022

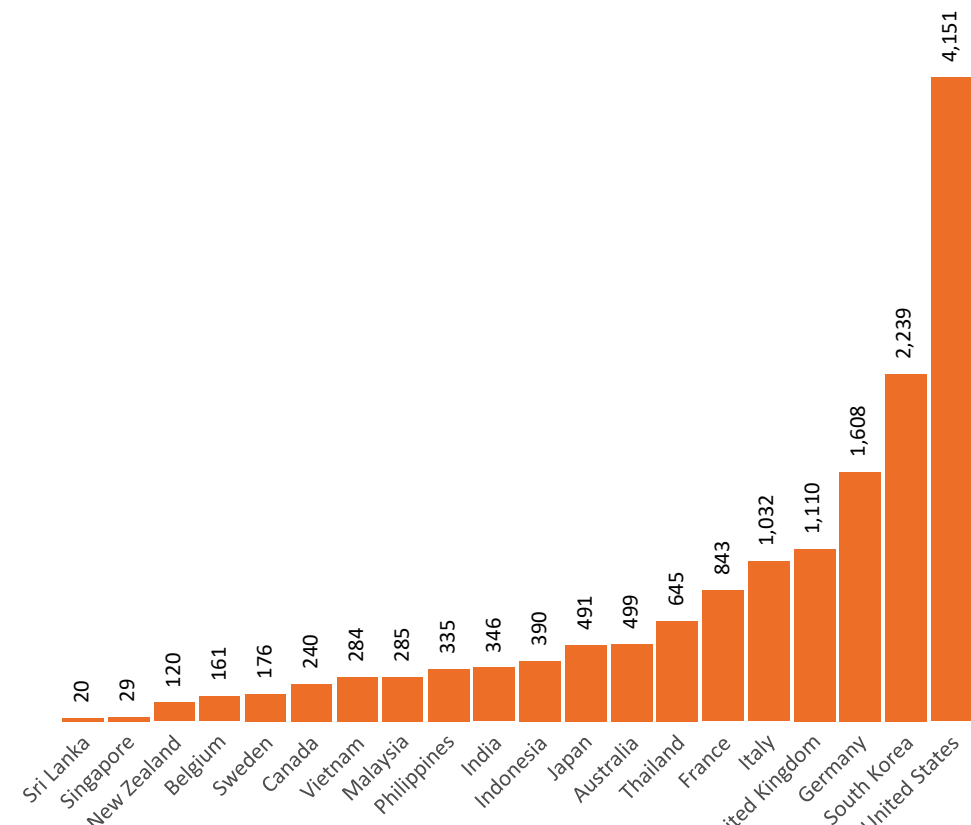
International data – COVID-19

New daily cases per million in 2021, Australia and G7 countries
Smoothed - 7 day average



Source: OWID
Data downloaded: 06 Apr 2022 08:06
Latest data: 04 Apr 2022

COVID-19 deaths in past 7 days - Australia and select countries



Source: OWID
Data downloaded: 06 Apr 2022 08:06
Latest data: 04 Apr 2022

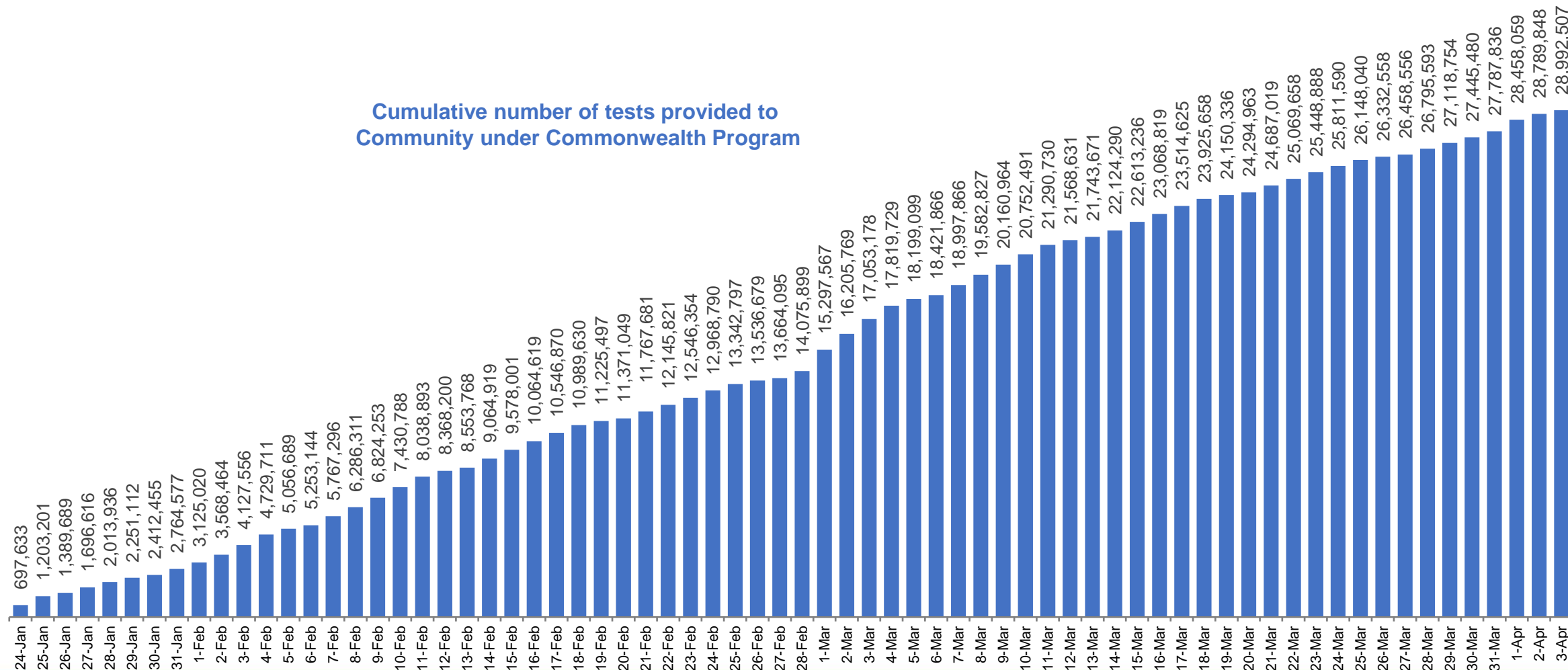
* NSW reported 331 additional deaths on 1 April 2022 due to a cross-check with NSW Registry of Births, Deaths and Marriages revealing additional deaths between 1 January 2020 and 23 March 2022.

Data as at:
3 April 2022

Concessional rapid antigen test program

5,623 pharmacies have delivered over 28.9 million rapid antigen tests to more than 4.3m eligible concession card holders under the Government's concessional rapid antigen test program.

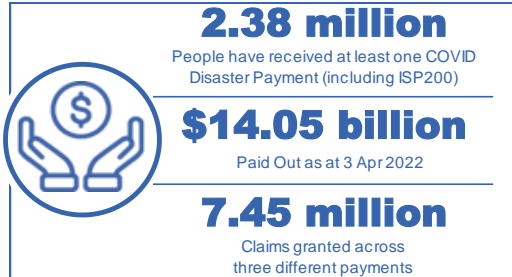
Cumulative number of tests provided to
Community under Commonwealth Program



Pandemic Response Payments

Australia's COVID-19
Vaccine Roadmap

Data as at midnight: 3 Apr 2022
Updated weekly



COVID Disaster Payment:	5.89 million claims received - 2.19 million individuals paid a total of \$12.59 billion.
\$200 Income Support Payment:	353,000 claims received - 183,000 individuals paid a total of \$268.9 million.
Pandemic Leave Disaster Payment:	1.73 million claims received - 1,052,000 individuals paid a total of \$1.19 billion.



COVID Disaster Payment

assisting during a lockdown event in a Commonwealth hotspot.

Income Support Payment \$200

for income support recipients who lost at least 8 hours of work.

Pandemic Leave Disaster Payment

for those who have to self-isolate, quarantine or care.

For more information visit:
servicesaustralia.gov.au

COVID-19 DISASTER PAYMENTS

Northern Territory

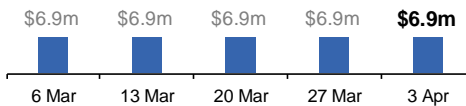
Lockdown (#3) from 16 Nov to 22 Nov
Claiming period ended 27 Dec

7,500 people have received at least one COVID Disaster Payment.

\$6.9m paid out as at 3 Apr 2022.

Nil paid in initial payments in the week ending 3 Apr 2022.

Cumulative payments made by Territory since activation on 25 Aug 2021.



Victoria

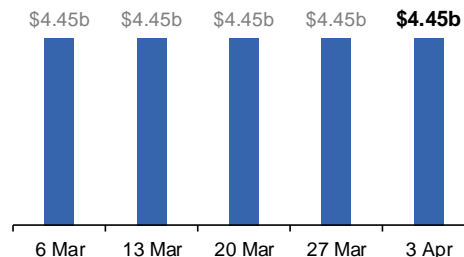
Lockdown (#6) from 6 Aug to 28 Oct
Claiming period ended 9 Dec

745,000 people have received at least one COVID Disaster Payment.

\$4.45b paid out as at 3 Apr 2022.

\$3,300 paid in initial and reoccurring payments in the week ending 3 Apr 2022.

Cumulative payments made by State since activation on 8 Jun 2021.



New South Wales

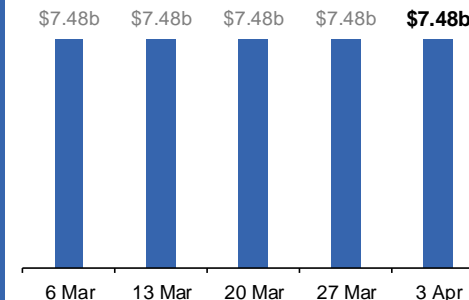
Lockdown from 24 Jun to 10 Oct
Claiming period ended 27 Nov

1.08m people have received at least one COVID Disaster Payment.

\$7.48b paid out as at 3 Apr 2022.

\$1,500 paid in initial and reoccurring payments in the week ending 3 Apr 2022.

Cumulative payments made by State since activation on 1 Jul 2021.



Australian Capital Territory

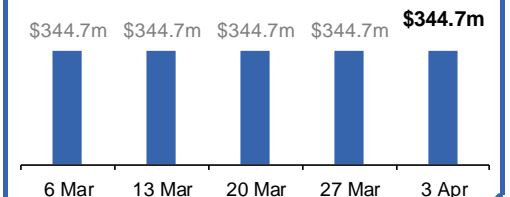
Lockdown from 12 Aug to 14 Oct
Claiming period ended 25 Nov

65,000 people have received at least one COVID Disaster Payment.

\$344.7m paid out as at 3 Apr 2022.

Nil paid in initial and reoccurring payments in the week ending 3 Apr 2022.

Cumulative payments made by Territory since activation on 20 Aug 2021.



Pandemic Response Payments (continued)

Data as at midnight: 3 Apr 2022
Updated weekly

COVID-19 DISASTER PAYMENTS

