



Australian Government
Operation COVID Shield

COVID-19 Vaccine Roll-out

05 April 2022

Data as at:
04 Apr 2022

Total vaccine doses



56,665,166 total vaccine
doses administered nationally as at 04 April
+57,638 recorded in the last 24 hours



19,971,461

people have had at least one
dose

>95%

of people over the age of 16
have had at least one dose



19,629,575

people are fully vaccinated

>95%

of people over the age of 16 are
fully vaccinated



13,002,602

people over the age of 16
who have received more
than two doses

NSW
17,593,842
(+16,840 daily
increase)

VIC
14,935,716
(+12,985 daily
increase)

QLD
10,734,566
(+11,481 daily
increase)

WA
6,201,340
(+7,935 daily
increase)

TAS
1,274,581
(+1,743 daily
increase)

SA
3,903,745
(+3,566 daily
increase)

ACT
1,465,869
(+2,361 daily
increase)

NT
555,507
(+727 daily
increase)

*Administration state breakdown indicates state in which a vaccine was administered

**Overall dose count includes instances of more than three doses per person in a small number of cases.

Source: Australian Immunisation Register

Booster Vaccinations

Australia's COVID-19
Vaccine Roadmap

Data as at:
04 Apr 2022



193,515

Indigenous people who have
received more than two doses

52.1%

of eligible population (371,208)



163,760

Aged Care Residents who have
received more than two doses##

94.2%

of eligible population (173,909)



174,873

NDIS participants

20,672

NDIS residents

who have received more than two doses#

72.7%

of eligible population
(240,000)

87.3%

of eligible population
(23,000)



13,002,602

total people who
have received more than two doses nationally

+30,428 recorded in the last 24 hours

68.3% of people who are eligible (19,030,309)

have received more than two doses

NSW	People	% of Eligible
Cumulative	3,977,785	64.5%
Daily increase	9,417	

VIC	People	% of Eligible
Cumulative	3,510,130	69.9%
Daily increase	6,535	

QLD	People	% of Eligible
Cumulative	2,250,537	62.4%
Daily increase	5,437	

WA	People	% of Eligible
Cumulative	1,571,367	86.5%
Daily increase	4,732	

SA	People	% of Eligible
Cumulative	920,536	71.9%
Daily increase	2,002	

TAS	People	% of Eligible
Cumulative	295,574	71.5%
Daily increase	955	

ACT	People	% of Eligible
Cumulative	260,276	75.7%
Daily increase	409	

NT	People	% of Eligible
Cumulative	111,962	69.5%
Daily increase	472	

104,435

doses administered to persons
residing in other territories or with
missing residential information

*People may belong to multiple groups and could be represented in the above breakdowns multiple times.

NDIS participants data as at 01 April 2022.

Aged Care Residents data as at 04 April 2022.

Source: Australian Immunisation Register

Vaccinations by residential location

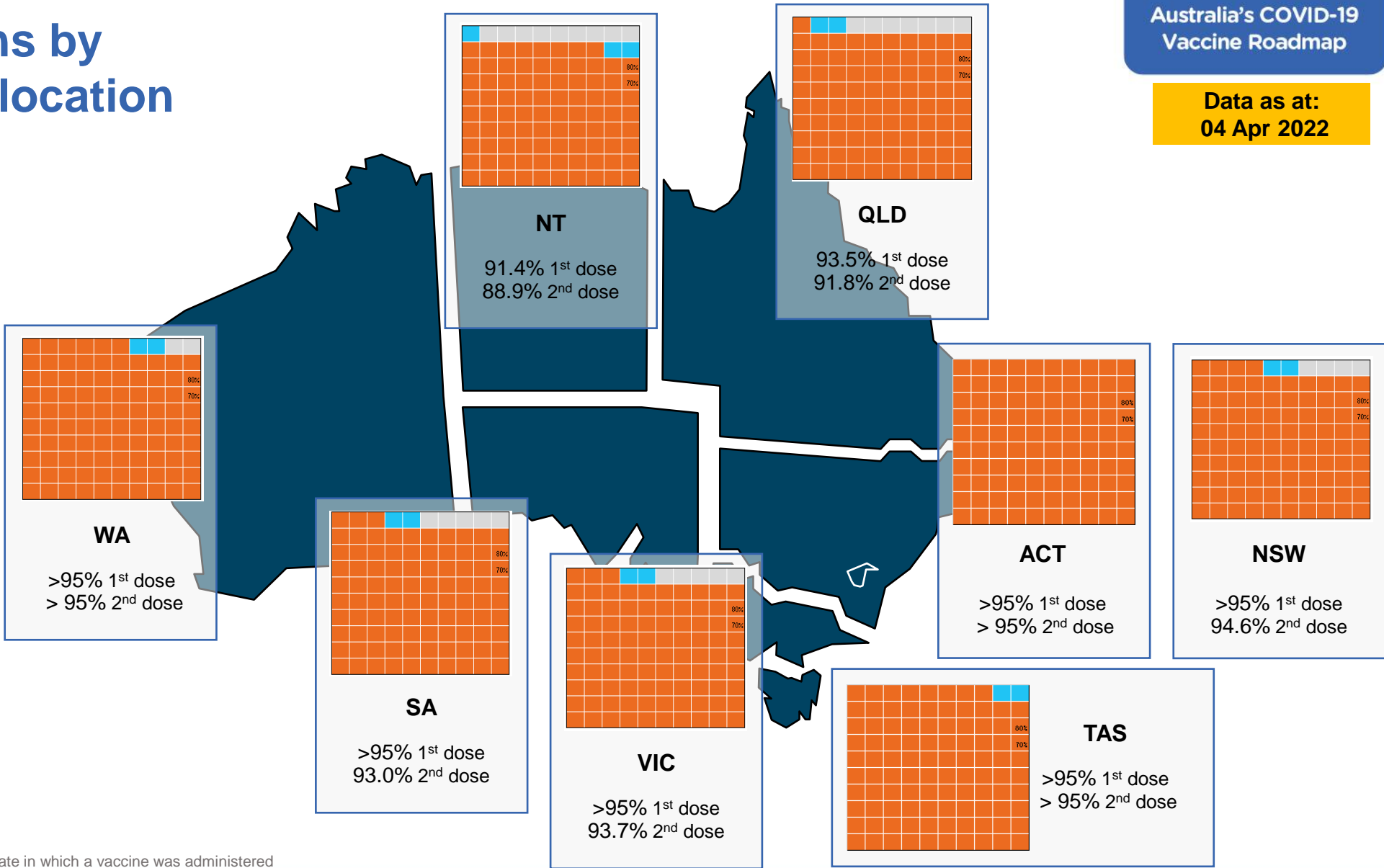
Data as at: 04 Apr 2022

First doses

Age	Today	4 weeks ago	8 weeks ago
16+	>95%	>95%	>95%
50+	>95%	>95%	>95%
70+	>95%	>95%	>95%

Fully vaccinated

Age	Today	4 weeks ago	8 weeks ago
16+	>95%	94.8%	94.1%
50+	>95%	>95%	>95%
70+	>95%	>95%	>95%



*Residential state may differ from the state in which a vaccine was administered

Commonwealth and Jurisdiction vaccine doses administered

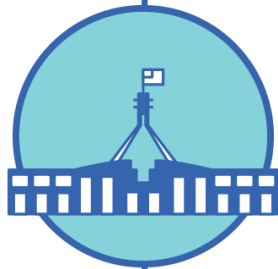
Data as at:
04 Apr 2022



56,665,166 total vaccine
doses administered nationally as at 04 April
+ 57,638 recorded in the last 24 hours



20,794,421
doses administered by state
and territory facilities
+ 11,907
recorded in the last 24 hours



35,870,745
doses administered by
commonwealth facilities
+ 45,731
recorded in the last 24 hours

34,602,766 total vaccine doses
administered in primary care settings
1,267,979 total vaccine doses
administered in aged care and disability
settings

NSW	Jurisdictions	Commonwealth
Cumulative	5,062,698	12,531,144
Daily increase	1,848	14,992

VIC	Jurisdictions	Commonwealth
Cumulative	5,999,263	8,936,453
Daily increase	2,587	10,398

QLD	Jurisdictions	Commonwealth
Cumulative	3,809,287	6,925,279
Daily increase	1,815	9,666

WA	Jurisdictions	Commonwealth
Cumulative	2,452,176	3,749,164
Daily increase	1,925	6,010

TAS	Jurisdictions	Commonwealth
Cumulative	613,331	661,250
Daily increase	718	1,025

SA	Jurisdictions	Commonwealth
Cumulative	1,774,416	2,129,329
Daily increase	1,162	2,404

ACT	Jurisdictions	Commonwealth
Cumulative	756,891	708,978
Daily increase	1,420	941

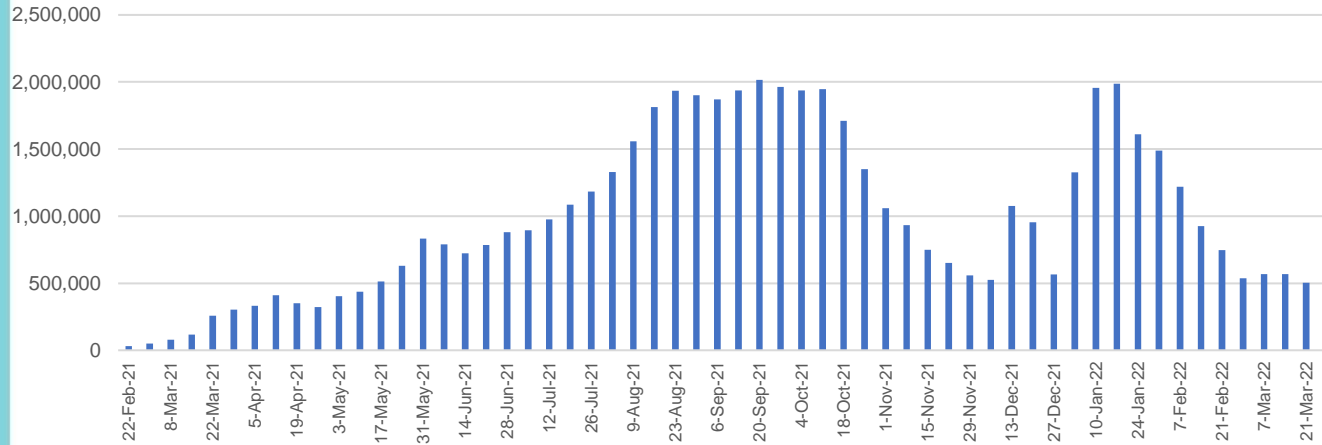
NT	Jurisdictions	Commonwealth
Cumulative	326,359	229,148
Daily increase	432	295

Vaccine milestone charts

Data as at:
04 Apr 2022

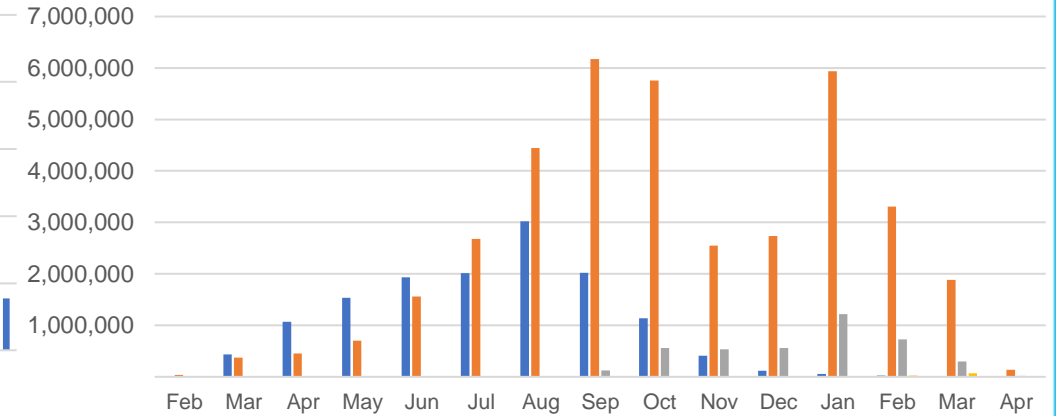
Australia's COVID-19
Vaccine Roadmap

Doses Administered by Week

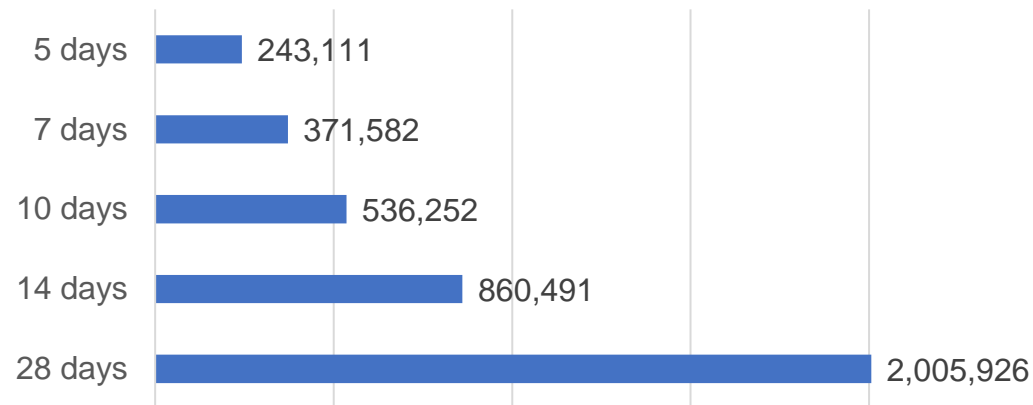


Doses by administration month and vaccine type

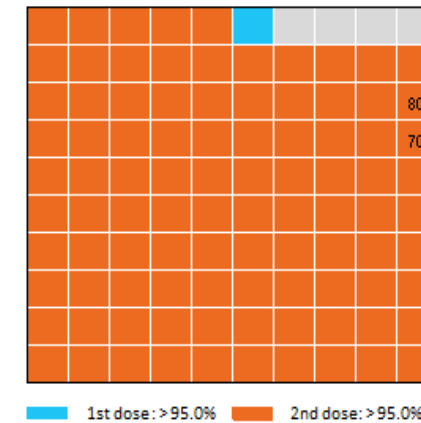
AZ - Vaxzevria Pfizer Moderna Novavax



Doses Reported



Eligible population percentage coverage



*Sourced from the Australian Immunisation Register.

*Each square represents 1% of the national population.
Squares are filled as milestones are achieved.

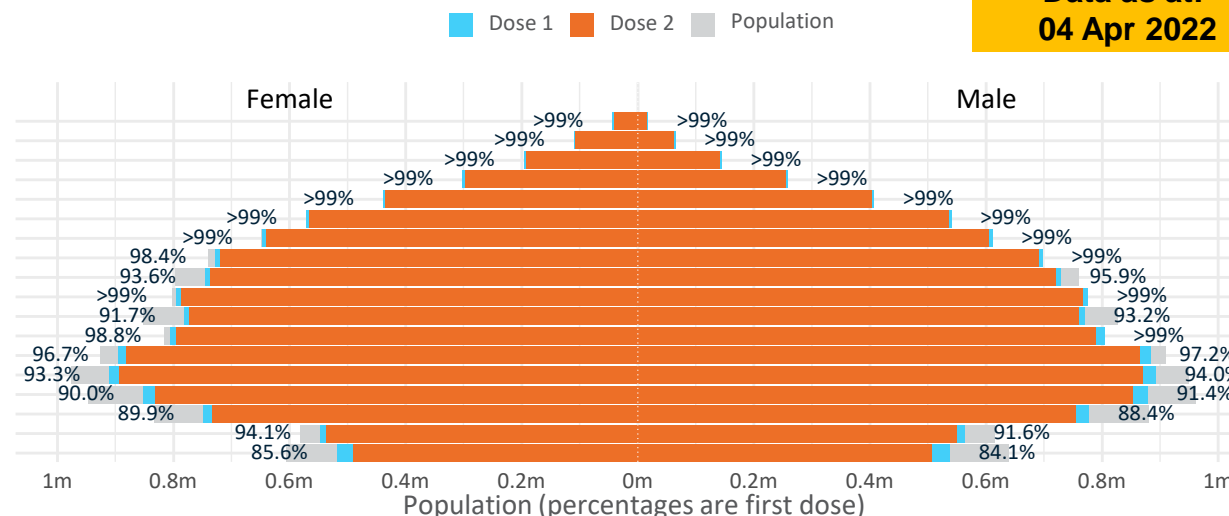
Doses by age and sex

First and second doses by age and sex

Australia's COVID-19
Vaccine Roadmap

Data as at:
04 Apr 2022

Age	Dose 1	Dose 2
95+	60,631 (>99%)	57,236 (>99%)
90-94	175,339 (>99%)	169,596 (>99%)
85-89	341,111 (>99%)	333,933 (>99%)
80-84	560,361 (>99%)	552,839 (>99%)
75-79	846,596 (>99%)	837,995 (>99%)
70-74	1,112,420 (>99%)	1,101,277 (>99%)
65-69	1,259,970 (>99%)	1,245,503 (99.0%)
60-64	1,426,501 (>99%)	1,409,995 (98.1%)
55-59	1,475,265 (94.8%)	1,458,328 (93.7%)
50-54	1,571,824 (>99%)	1,554,121 (>99%)
45-49	1,552,148 (92.6%)	1,532,607 (91.4%)
40-44	1,611,868 (>99%)	1,586,755 (97.9%)
35-39	1,783,582 (97.2%)	1,750,578 (95.4%)
30-34	1,810,599 (94.1%)	1,767,992 (91.9%)
25-29	1,740,422 (91.3%)	1,692,526 (88.8%)
20-24	1,532,041 (89.5%)	1,492,381 (87.2%)
16-19	1,110,783 (92.9%)	1,085,913 (90.8%)
12-15	1,056,073 (84.9%)	997,042 (80.1%)

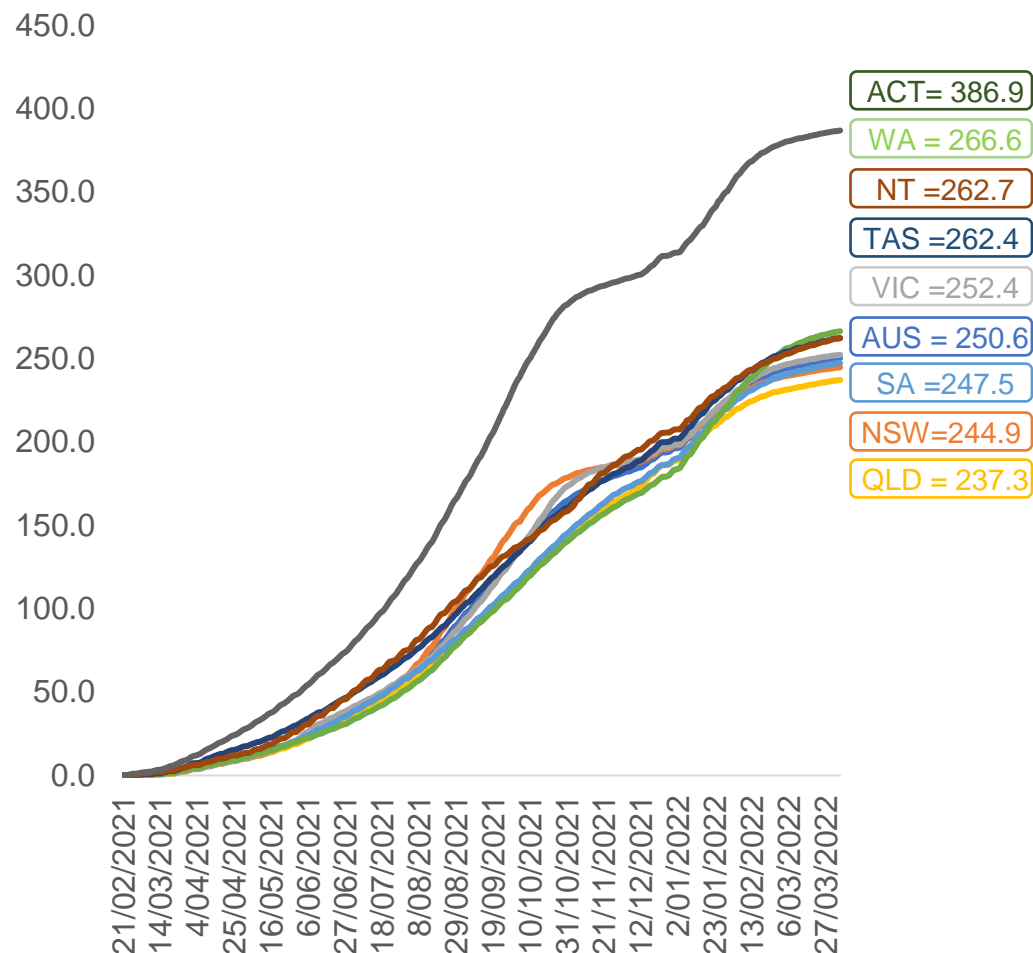


	AUS	ACT	NSW	NT	QLD	SA	TAS	VIC	WA
16 and over - dose 1	19,971,461	351,591	6,305,330	174,216	3,844,006	1,369,894	443,330	5,142,133	2,085,958
16 and over - dose 2	19,629,575	346,152	6,210,428	169,421	3,775,874	1,339,084	433,909	5,065,886	2,050,355
16 and over - population	20,619,959*	344,037	6,565,651	190,571	4,112,707	1,440,400	440,172	5,407,574	2,114,978
16 and over % with dose 1	96.85%	>99%	96.04%	91.42%	93.47%	95.11%	>99%	95.09%	98.63%
16 and over % with dose 2	95.20%	>99%	94.59%	88.90%	91.81%	92.97%	98.58%	93.68%	96.94%
5 to 11 - dose 1	1,194,660	31,864	355,548	13,169	208,637	84,160	28,810	325,214	139,661
5 to 11 - dose 2	681,077	22,893	207,833	6,415	118,514	49,293	20,573	183,625	68,702
5 to 11 - population	2,276,638	39,789	716,460	24,750	478,731	148,816	45,033	578,499	244,154
5 to 11 % with dose 1	52.47%	80.08%	49.63%	53.21%	43.58%	56.55%	63.98%	56.22%	57.20%
5 to 11 % with dose 2	29.92%	57.54%	29.01%	25.92%	24.76%	33.12%	45.68%	31.74%	28.14%
12 to 15 - dose 1	1,056,073	20,084	325,357	10,896	207,359	68,445	22,918	275,949	115,647
12 to 15 - dose 2	997,042	19,473	310,240	9,781	193,732	64,630	21,732	263,346	105,892
12 to 15 - population	1,243,990	19,693	390,330	13,060	270,146	82,747	26,308	308,611	132,869
12 to 15 % with dose 1	84.89%	>99%	83.35%	83.43%	76.76%	82.72%	87.11%	89.42%	87.04%
12 to 15 % with dose 2	80.15%	98.88%	79.48%	74.89%	71.71%	78.11%	82.61%	85.33%	79.70%

*National population will not equal sum of listed jurisdictions due to a small number of people counted in national population residing in some 'other' territories. Sum of state doses will not add to national total as some records are unable to be geocoded to a State or Territory.
Doses sourced from Australian Immunisation Register, population from ABS ERP June 2020

Vaccinations by location

Cumulative total doses administered vs eligible state populations*

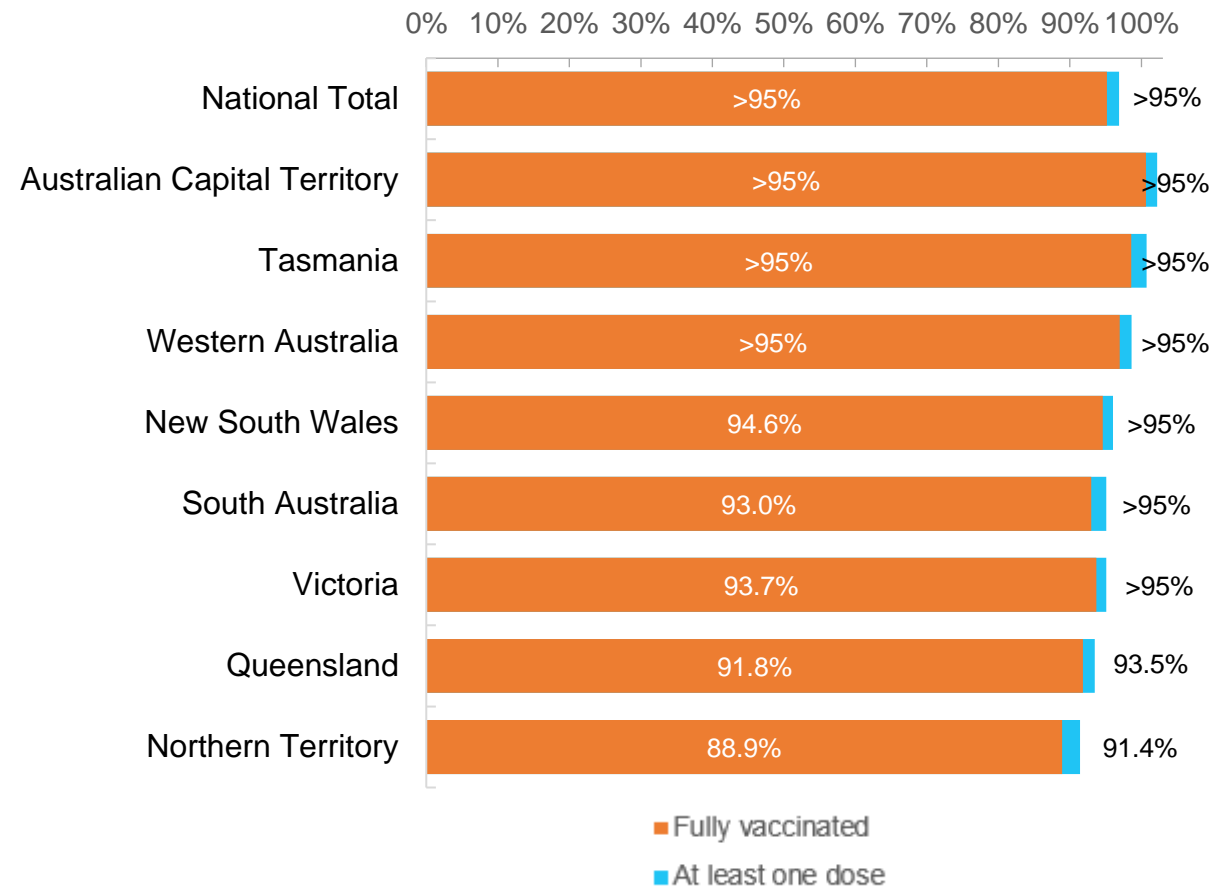


*Not an indication of percentage vaccinated, numbers will exceed 100 due to multiple doses required per person of the population. All doses are included for those aged 12 and above, and are based on vaccination provider location.

Data as at:
04 Apr 2022

Australia's COVID-19
Vaccine Roadmap

First and Second Doses by residential location



Aboriginal and Torres Strait Islander peoples

Number of people vaccinated

Data as at:
29 Mar 2022
Updated weekly

Australia's COVID-19
Vaccine Roadmap



436,084

people over the age of 16
have had at least one dose

84.2%

of people over the age of 16
have had at least one dose



414,780

people over the age of 16
are fully vaccinated

80.0%

of people over the age of 16 are
fully vaccinated



People aged 12 – 15 years

48,579

42,396

68.4%

At least one dose

59.7%

Fully vaccinated

178 Aboriginal community controlled health services (ACCHS)

0#

50

27

44

12

3

21

21

ACT

NSW

NT

QLD

SA

TAS

VIC

WA

Medicare Address State ^{##}	Individuals Dose 1	Individuals Dose 1 %	Individuals Dose 2	Individuals Dose 2 %
Australian Capital Territory	4,832	90.9%	4,709	88.6%
New South Wales	134,469	86.6%	131,243	84.6%
Northern Territory	42,185	89.3%	39,809	84.3%
Queensland	115,088	81.2%	109,024	76.9%
South Australia	19,764	79.6%	18,238	73.4%
Tasmania	13,863	88.4%	13,424	85.6%
Victoria	35,253	89.7%	34,396	87.5%
Western Australia	53,370	85.3%	48,462	77.5%
Unknown/Other Territories	17,260	65.7%	15,475	58.9%
Totals	436,084	84.2%	414,780	80.0%

Source: Australian Immunisation Register

*Identifying as Aboriginal and Torres Strait Islander is optional and the estimated population may be under reported.

**Includes all Aboriginal and Torres Strait Islander peoples who have received a vaccination, not limited to those administered in an ACCHS setting

#ACCHS in the ACT are currently operating as a Commonwealth Vaccine Clinics so not included to avoid double counting

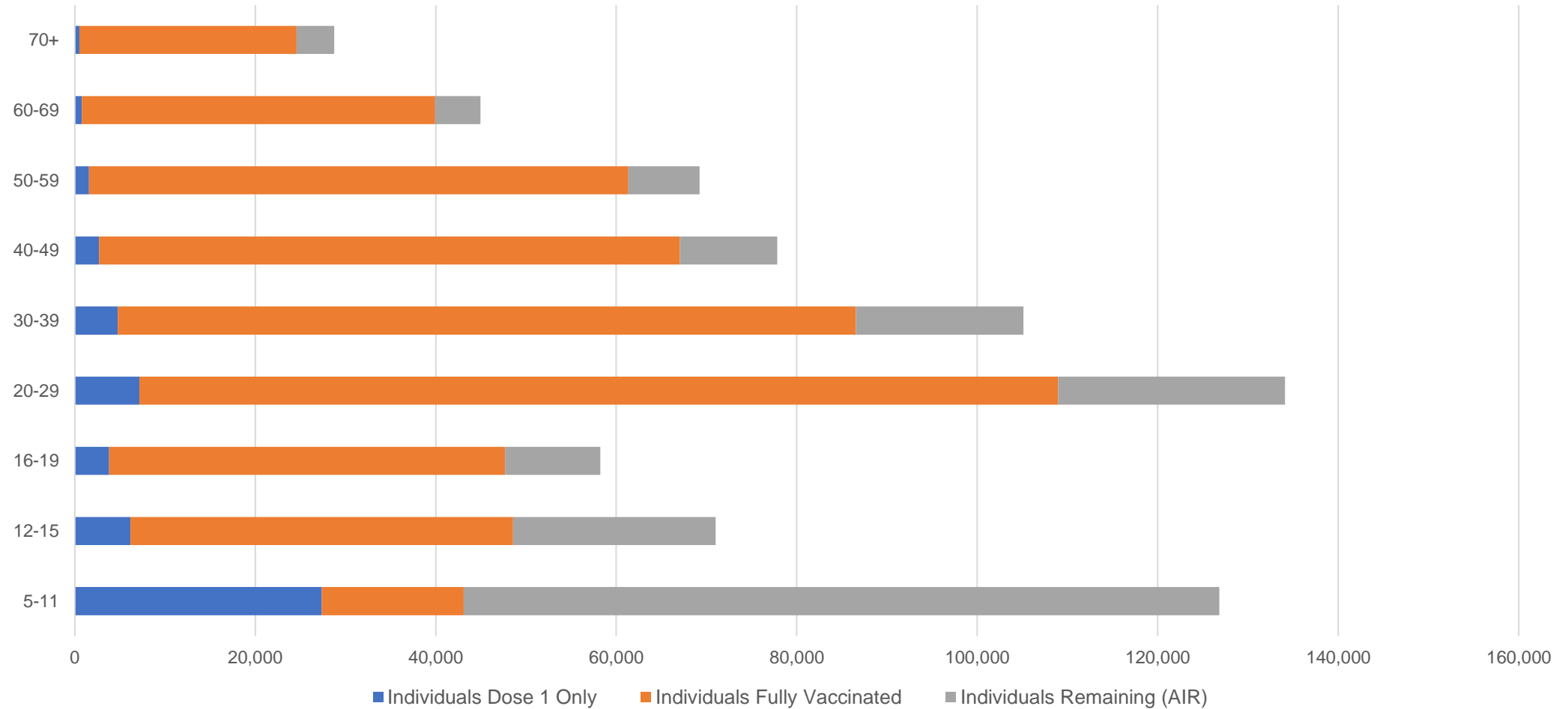
##The above table includes all identified Aboriginal and Torres Strait Islander people who are aged 16 and above by their state of residence.

Aboriginal and Torres Strait Islander peoples

Number of people vaccinated by age

Data as at:
29 Mar 2022
Updated weekly

Australia's COVID-19
Vaccine Roadmap



Source: Australian Immunisation Register

Commonwealth primary care

Data as at:
04 Apr 2022

Australia's COVID-19
Vaccine Roadmap



Primary care vaccine administration sites

5,793	128	178	3,587
GPs	CVCs	ACCHS	Pharmacies



34,602,766 total vaccine doses administered
primary care settings as at 04 April
+ 45,489 recorded in the last 24 hours

Primary care vaccinations by provider type

	Doses administered	Daily increase	7 day increase
General Practice* includes other Commonwealth	27,960,609	28,730	172,710
Pharmacy	6,642,157	16,759	99,275

NSW
11,978,038
(+14,832 daily increase)

VIC
8,624,815
(+10,274 daily increase)

QLD
6,648,215
(+9,281 daily increase)

WA
3,619,602
(+5,876 daily increase)

TAS
641,213
(+1,004 daily increase)

SA
2,051,133
(+2,292 daily increase)

ACT
543,780
(+826 daily increase)

NT
207,474
(+260 daily increase)

288,496

doses administered to persons
residing in other territories or with
missing residential information

*General practice includes Commonwealth Vaccination Clinics, Aboriginal Community Health Centres, Royal Flying Doctor Service and other Commonwealth vaccination facilities

Source: Australian Immunisation Register

Data as at:
04 Apr 2022

Commonwealth aged care and disability doses administered



1,267,979 (+ 242 last 24 hours)

Total vaccine doses administered in aged care and disability facilities as at 04 April

Number of doses administered as part of the Commonwealth aged and disability care rollout

NSW
558,493
(+32 daily increase)

VIC
234,789
(-16 daily increase)

QLD
201,657
(+81 daily increase)

WA
106,900
(+70 daily increase)

TAS
22,496
(+3 daily increase)

SA
83,850
(-11 daily increase)

ACT
16,816
(+23 daily increase)

NT
7,478
(+6 daily increase)

35,500

doses administered to persons
residing in other territories or with
missing residential information

Source: Australian Immunisation Register

*Sourced from the Australian Immunisation Register. Includes all persons vaccinated at participating residential aged care, disability and related industry settings.

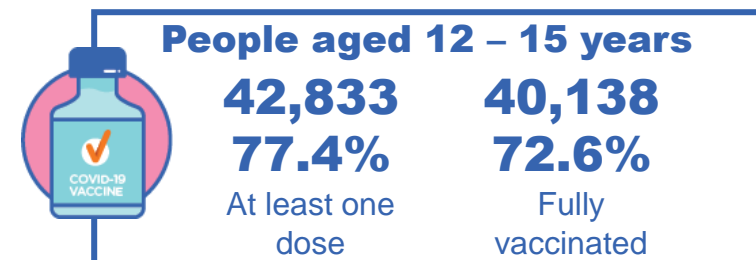
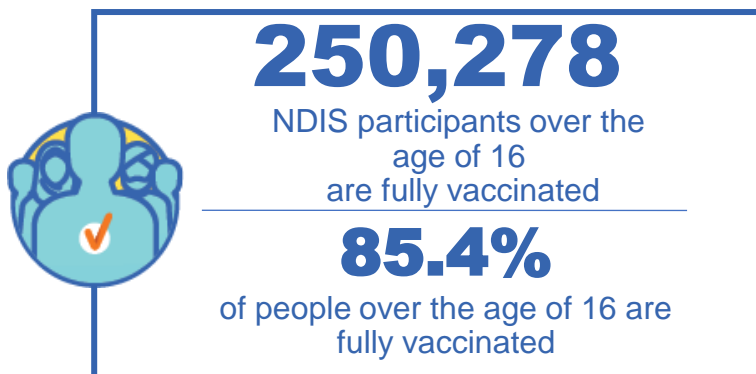
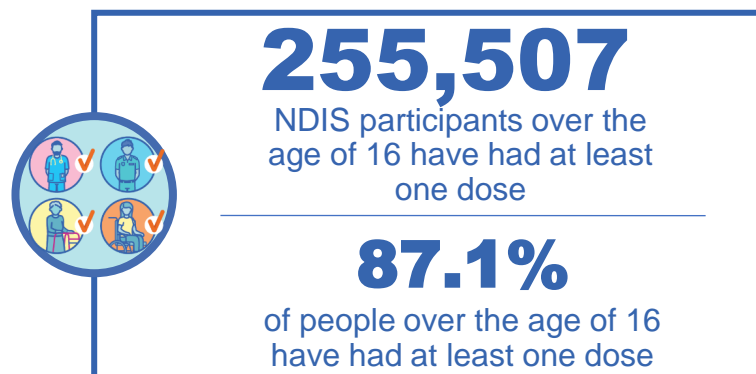
**State level breakdown indicates the residential location and may not align to the state in which the vaccination occurred.

Numbers are calculated as difference in daily cumulative reported numbers to allow for historical corrections in all data sources. This can occasionally result in negative numbers, such as for VIC and SA, where historical details about doses have been updated.

National Disability Insurance Scheme (NDIS) reported vaccinations

Data as at:
31 March 2022
Updated weekly

Australia's COVID-19
Vaccine Roadmap



NDIS participant vaccinations

	People aged 16+ with at least one dose	People aged 16+ fully vaccinated	% People aged 16+ with at least one dose	% People aged 16+ fully vaccinated
ACT	4,840	4,774	89.2%	88.0%
NSW	78,610	77,294	87.6%	86.2%
NT	2,208	2,133	77.4%	74.8%
QLD	50,315	49,233	85.5%	83.7%
SA	20,809	20,248	84.8%	82.5%
TAS	6,408	6,238	87.2%	84.9%
VIC	68,002	66,752	88.3%	86.7%
WA	24,315	23,606	88.3%	85.7%
National	255,507	250,278	87.1%	85.4%

Source: Linkage between National Disability Insurance Agency data and the Australian Immunisation Register. Total NDIS participant numbers as at 28th February. Australian Immunisation Register data as at 30 March. Includes all participants regardless of residence type.

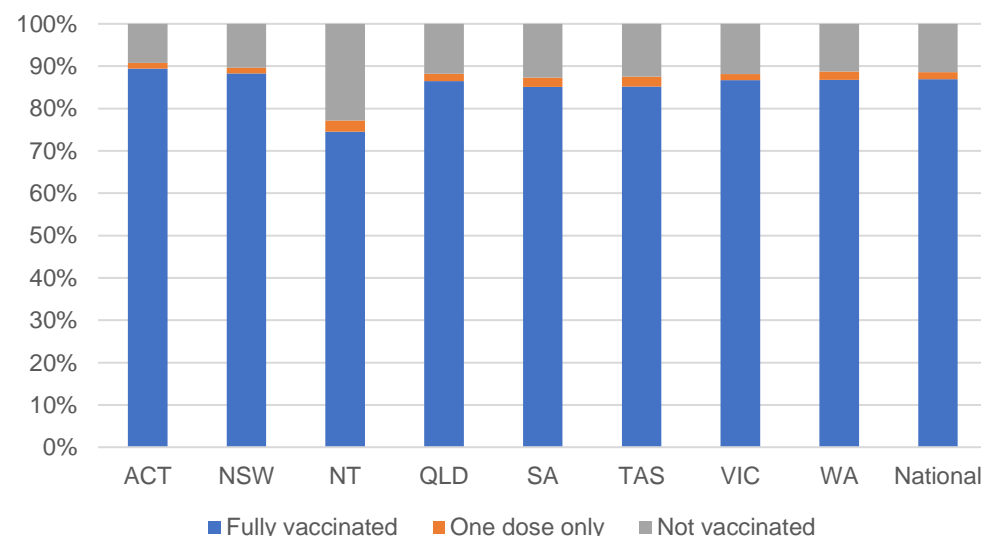
National Disability Insurance Scheme (NDIS) reported vaccinations

Data as at:
31 March 2022
Updated Weekly

Australia's COVID-19
Vaccine Roadmap

NATIONAL	Total people with at least one dose	People fully vaccinated	Total number of individuals in cohort	% People with at least one dose	% People fully vaccinated
NDIS participants living in disability accommodation	20,686	20,315	23,352	88.6%	87.0%

NDIS participants in disability and aged care accommodation



Source: Linkage between National Disability Insurance Agency data and the Australian Immunisation Register. Includes participants residing in disability accommodation only.

Source: Total NDIS participant numbers as at 28th February. Participant data as at 29 March. Australian Immunisation Register data as at 30 March. Worker data as at 31 March.

NDIS workforce vaccinations

	NDIS workers with at least one dose	NDIS workers fully vaccinated	% NDIS workers with at least one dose	% NDIS workers fully vaccinated
NSW	121,300	117,509	98.1%	95.1%
VIC	116,416	111,987	98.3%	94.6%
QLD	69,423	68,592	97.5%	96.3%
WA	32,844	30,848	98.6%	92.6%
SA	35,416	31,990	98.5%	89.0%
TAS	10,778	10,503	99.7%	97.2%
ACT	3,523	3,492	99.1%	98.2%
NT	3,378	3,205	97.4%	92.4%
TOTAL	393,078	378,126	98.2%	94.5%

Source: the NDIS Commission has established a requirement for registered NDIS providers who provide intensive disability support services to report on the vaccination status of workers they employ, or otherwise engage, to deliver NDIS-funded supports and services, and who are required to be vaccinated in accordance with in-force state and territory public health orders. The statistics reflect data reported to the NDIS Commission by registered NDIS providers and should be considered indicative and subject to change

Note: Some registered NDIS providers are yet to report on the vaccination status of their workforce. The NDIS Commission is working with those providers around reporting requirements.

Remaining workers not included include those exempt from vaccination requirements, workers whose vaccination status is not yet verified by the provider (such as workers on leave) and provider reporting anomalies.

Residential aged care vaccination rollout

Australia's COVID-19
Vaccine Roadmap

Data as at:
31 Mar 2022
Updated weekly

Residential aged care facilities status

100%

Commonwealth facilities
visited (2,537 planned sites)

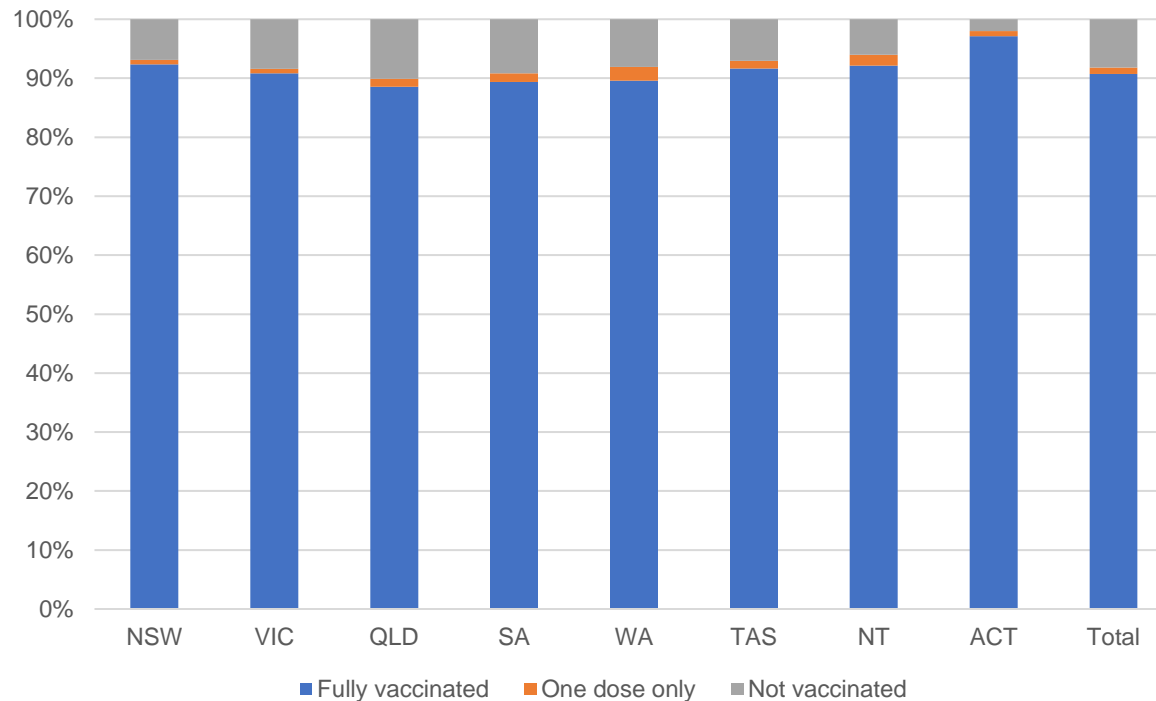
173,909

People fully vaccinated

176,002

People with at least
one dose

Aged care resident vaccinations



Aged care worker vaccinations

Jurisdictions	Total workers with at least one dose	Workers fully vaccinated	% Workers with at least one dose	% Workers fully vaccinated
NSW	77,436	77,331	97.6%	97.5%
VIC	65,380	65,378	95.3%	95.3%
QLD	46,376	46,370	95.2%	95.2%
SA	26,364	26,344	97.6%	97.5%
WA	23,838	23,836	98.9%	98.9%
TAS	7,645	7,645	100.0%	100.0%
NT	847	847	100.0%	100.0%
ACT	2,987	2,987	100.0%	100.0%
Total	250,873	250,738	96.8%	96.7%

Source: My Aged Care Portal vaccination progress

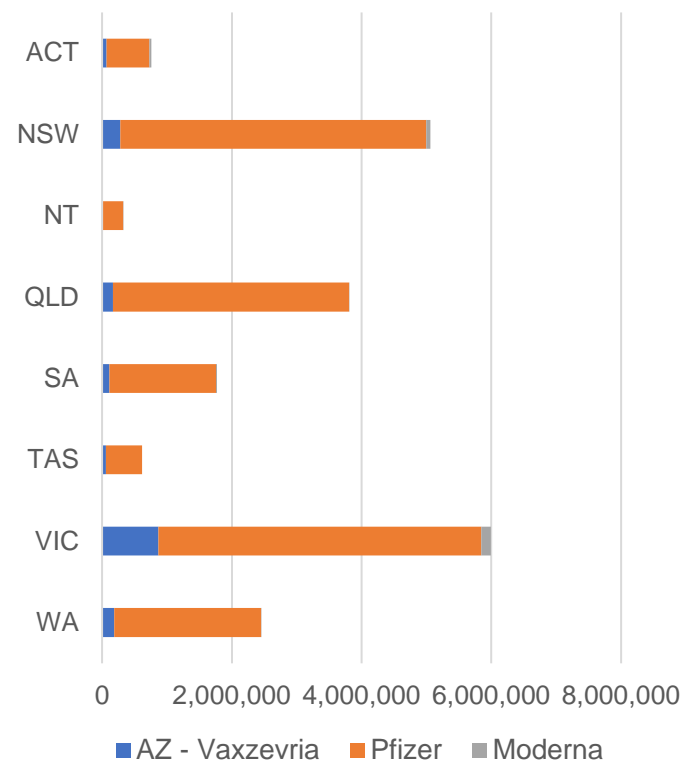
*Status updates are provided by facilities at least once per week. Reporting is updated Monday to Friday to encompass different facility updates being made on different days.

Data is sourced directly from Aged Care Service Providers and is not drawn or closely aligned with data from AIR due to inconsistencies and potential lags in uploading of records.

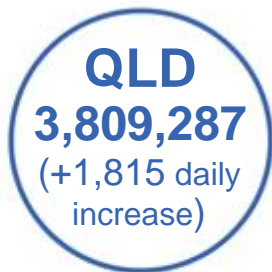
Data as at:
04 Apr 2022

Jurisdiction administered

Total vaccine doses administered in State and Territory clinics as at 04 April



20,794,421 total vaccine doses administered
in State and Territory clinics as at 04 April
+ 11,907 recorded in the last 24 hours
+ 96,835 recorded in the last 7 days



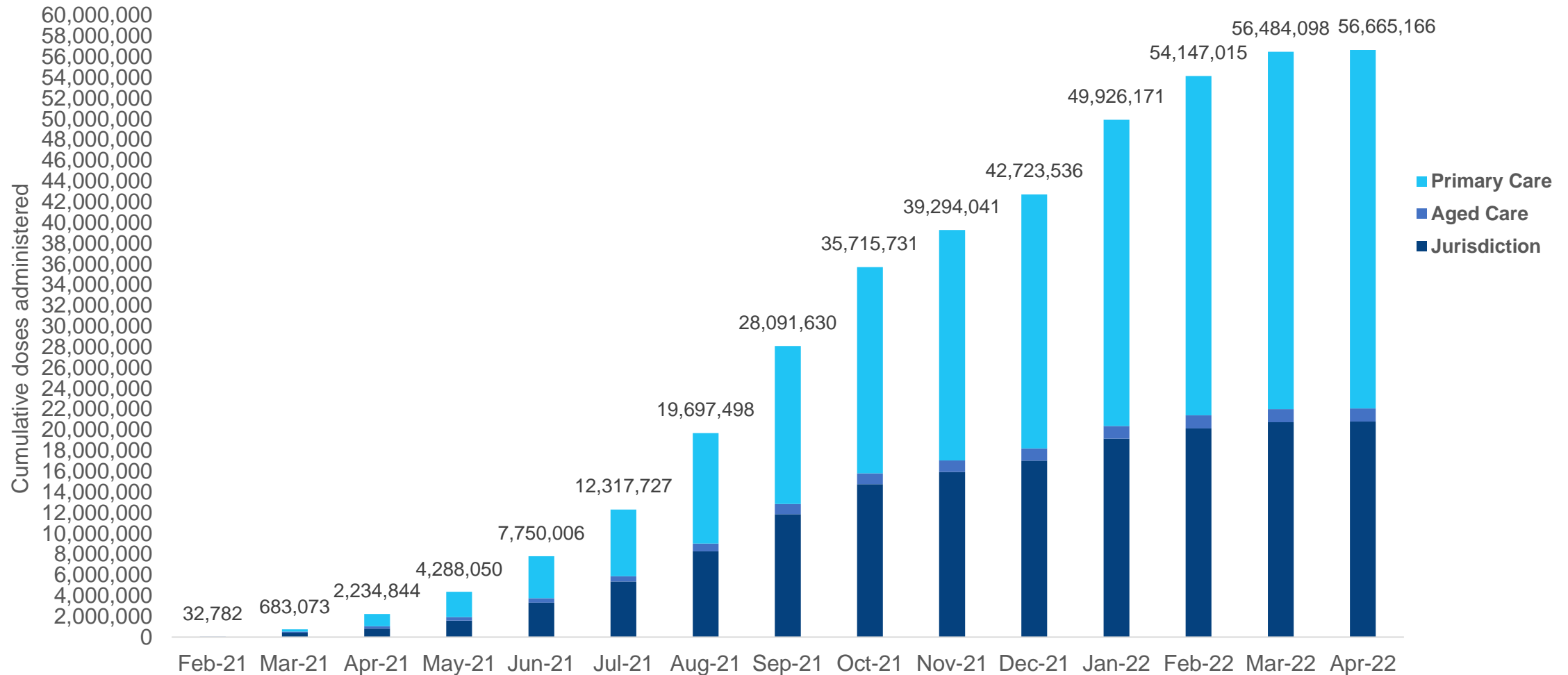
*Sourced from the Australian Immunisation Register. Numbers are calculated as difference in daily cumulative reported numbers to allow for historical corrections.

Source: Australian Immunisation Register

Cumulative doses administered by channel

Data as at:
04 Apr 2022

Australia's COVID-19
Vaccine Roadmap



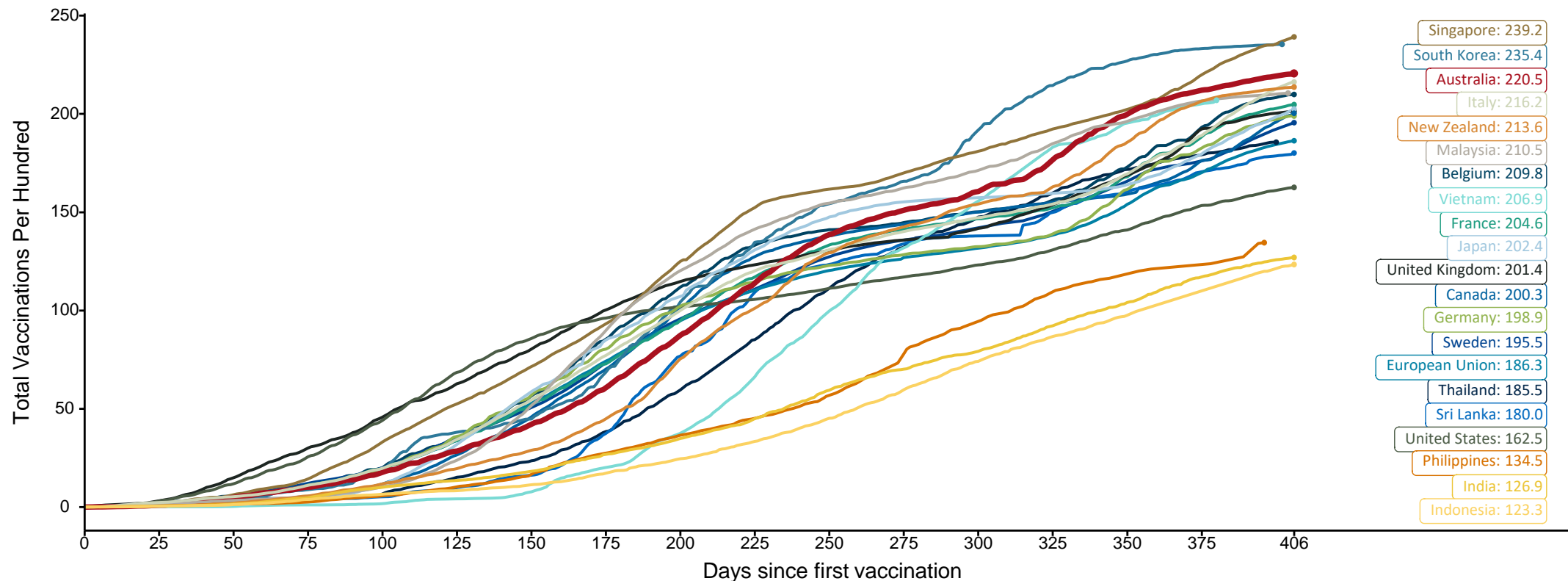
Source: Australian Immunisation Register

Doses at equivalent stages of rollout (Day 406)

Data as at:
04 Apr 2022

The x-axis is truncated at the length of Australia's vaccination program. Countries with intermittent reporting have had their doses per 100 imputed to Australia's current stage of rollout. Israel excluded as it is beyond scale of the graph

Cumulative doses administered (04 Apr): **56,665,166**



Note: From 11 January 2022, data for Australia includes all doses administered to people 5 and over. Prior to 11 January, data was for 12 and over.

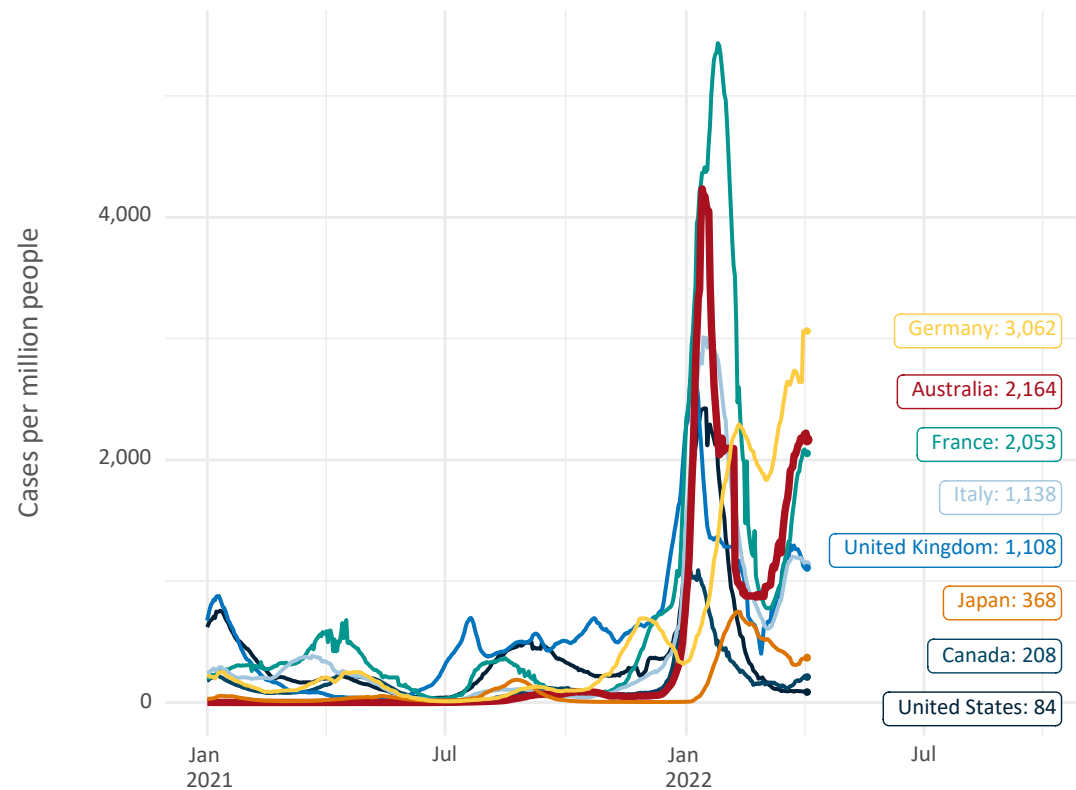
Source: Department of Health (Australia), Our World in Data (international)

Latest data: 04 April

Data as at:
04 Apr 2022

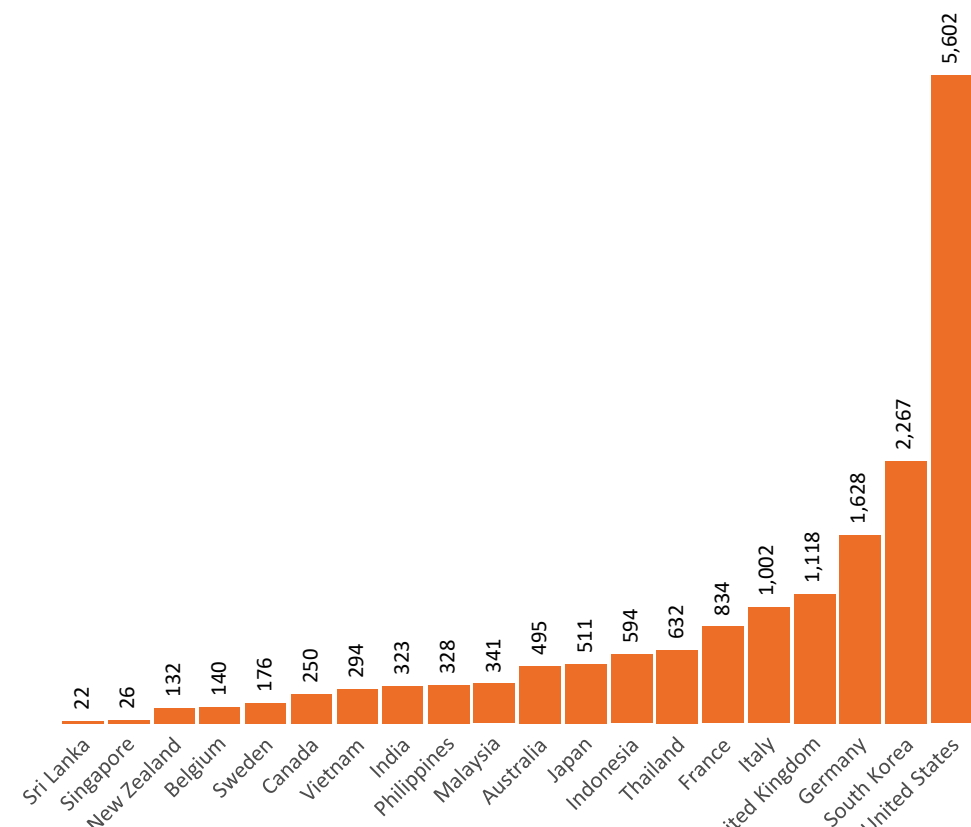
International data – COVID-19

New daily cases per million in 2021, Australia and G7 countries
Smoothed - 7 day average



Source: OWID
Data downloaded: 05 Apr 2022 07:58
Latest data: 03 Apr 2022

COVID-19 deaths in past 7 days - Australia and select countries



Source: OWID
Data downloaded: 05 Apr 2022 07:58
Latest data: 03 Apr 2022

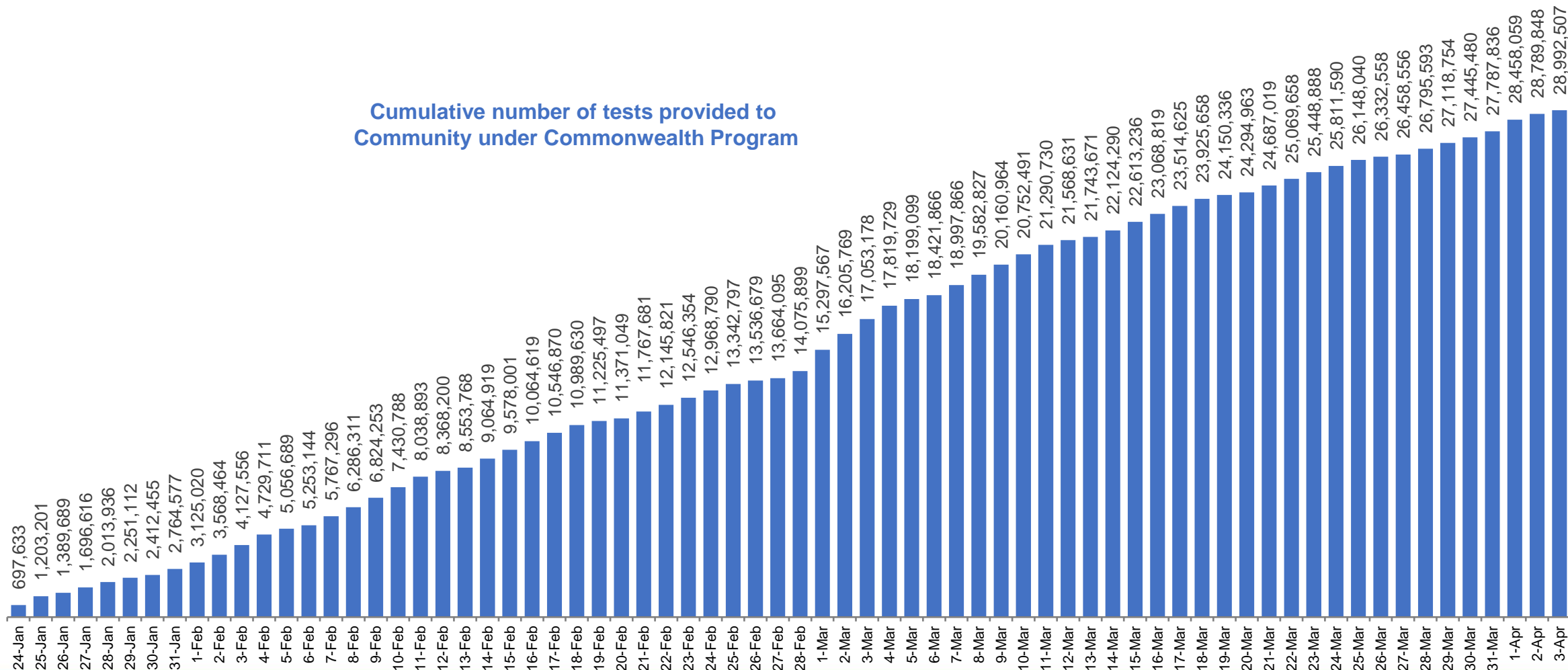
* NSW reported 331 additional deaths on 1 April 2022 due to a cross-check with NSW Registry of Births, Deaths and Marriages revealing additional deaths between 1 January 2020 and 23 March 2022.

Data as at:
3 April 2022

Concessional rapid antigen test program

5,623 pharmacies have delivered over 28.9 million rapid antigen tests to more than 4.3m eligible concession card holders under the Government's concessional rapid antigen test program.

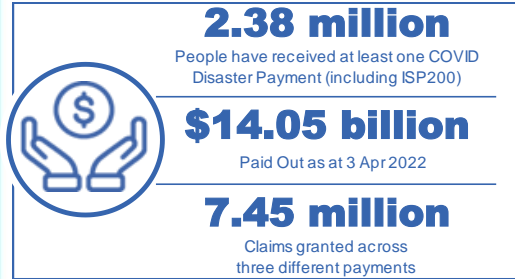
Cumulative number of tests provided to
Community under Commonwealth Program



Pandemic Response Payments

Australia's COVID-19
Vaccine Roadmap

Data as at midnight: 3 Apr 2022
Updated weekly



COVID Disaster Payment:	5.89 million claims received - 2.19 million individuals paid a total of \$12.59 billion.
\$200 Income Support Payment:	353,000 claims received - 183,000 individuals paid a total of \$268.9 million.
Pandemic Leave Disaster Payment:	1.73 million claims received - 1,052,000 individuals paid a total of \$1.19 billion.



COVID Disaster Payment

assisting during a lockdown event in a Commonwealth hotspot.

Income Support Payment \$200

for income support recipients who lost at least 8 hours of work.

Pandemic Leave Disaster Payment

for those who have to self-isolate, quarantine or care.

For more information visit:
servicesaustralia.gov.au

COVID-19 DISASTER PAYMENTS

Northern Territory

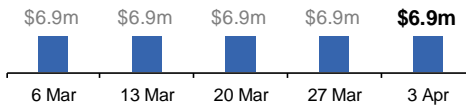
Lockdown (#3) from 16 Nov to 22 Nov
Claiming period ended 27 Dec

7,500 people have received at least one COVID Disaster Payment.

\$6.9m paid out as at 3 Apr 2022.

Nil paid in initial payments in the week ending 3 Apr 2022.

Cumulative payments made by Territory since activation on 25 Aug 2021.



Victoria

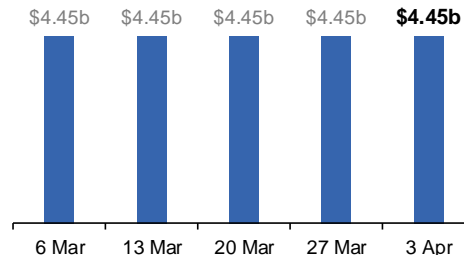
Lockdown (#6) from 6 Aug to 28 Oct
Claiming period ended 9 Dec

745,000 people have received at least one COVID Disaster Payment.

\$4.45b paid out as at 3 Apr 2022.

\$3,300 paid in initial and reoccurring payments in the week ending 3 Apr 2022.

Cumulative payments made by State since activation on 8 Jun 2021.



New South Wales

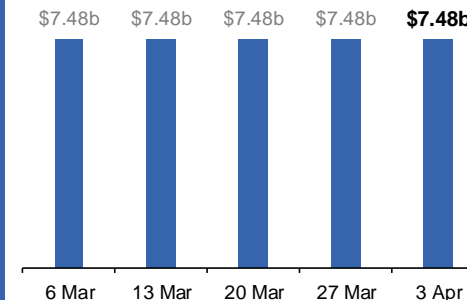
Lockdown from 24 Jun to 10 Oct
Claiming period ended 27 Nov

1.08m people have received at least one COVID Disaster Payment.

\$7.48b paid out as at 3 Apr 2022.

\$1,500 paid in initial and reoccurring payments in the week ending 3 Apr 2022.

Cumulative payments made by State since activation on 1 Jul 2021.



Australian Capital Territory

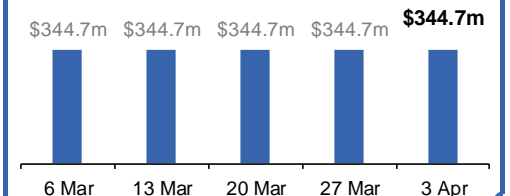
Lockdown from 12 Aug to 14 Oct
Claiming period ended 25 Nov

65,000 people have received at least one COVID Disaster Payment.

\$344.7m paid out as at 3 Apr 2022.

Nil paid in initial and reoccurring payments in the week ending 3 Apr 2022.

Cumulative payments made by Territory since activation on 20 Aug 2021.



Pandemic Response Payments (continued)

Data as at midnight: 3 Apr 2022
Updated weekly

COVID-19 DISASTER PAYMENTS

