



**Australian Government**  
**Operation COVID Shield**

# COVID-19 Vaccine Roll-out

**04 April 2022**

Data as at:  
03 Apr 2022

# Total vaccine doses



**56,607,528** total vaccine  
doses administered nationally as at 03 April  
**+20,464** recorded in the last 24 hours



**19,968,391**

people have had at least one  
dose

**>95%**

of people over the age of 16  
have had at least one dose



**19,625,974**

people are fully vaccinated

**>95%**

of people over the age of 16 are  
fully vaccinated



**12,972,174**

people over the age of 16  
who have received more  
than two doses

**NSW**  
**17,577,002**  
(+4,582 daily  
increase)

**VIC**  
**14,922,731**  
(+5,225 daily  
increase)

**QLD**  
**10,723,085**  
(+3,294 daily  
increase)

**WA**  
**6,193,405**  
(+2,824 daily  
increase)

**TAS**  
**1,272,838**  
(+1,535 daily  
increase)

**SA**  
**3,900,179**  
(+1,850 daily  
increase)

**ACT**  
**1,463,508**  
(+858 daily  
increase)

**NT**  
**554,780**  
(+296 daily  
increase)

\*Administration state breakdown indicates state in which a vaccine was administered

\*\*Overall dose count includes instances of more than three doses per person in a small number of cases.

Source: Australian Immunisation Register

# Booster Vaccinations

Australia's COVID-19  
Vaccine Roadmap

Data as at:  
03 Apr 2022



**192,749**

Indigenous people who have  
received more than two doses

**52.1%**

of eligible population (369,744)



**163,760**

Aged Care Residents who have  
received more than two doses##

**94.2%**

of eligible population (173,909)



**174,873**

NDIS participants

**20,672**

NDIS residents

who have received more than two doses#

**72.7%**

of eligible population  
(240,000)

**87.3%**

of eligible population  
(23,000)



**12,972,174** total people who  
have received more than two doses nationally

**+8,055** recorded in the last 24 hours

**68.3%** of people who are eligible (19,004,626)  
have received more than two doses

NSW	People	% of Eligible
Cumulative	3,968,368	64.4%
Daily increase	1,825	

VIC	People	% of Eligible
Cumulative	3,503,595	69.8%
Daily increase	1,526	

QLD	People	% of Eligible
Cumulative	2,245,100	62.4%
Daily increase	1,395	

WA	People	% of Eligible
Cumulative	1,566,635	86.6%
Daily increase	1,130	

SA	People	% of Eligible
Cumulative	918,534	71.9%
Daily increase	540	

TAS	People	% of Eligible
Cumulative	294,619	71.5%
Daily increase	67	

ACT	People	% of Eligible
Cumulative	259,867	75.6%
Daily increase	170	

NT	People	% of Eligible
Cumulative	111,490	69.4%
Daily increase	128	

**103,966**

doses administered to persons  
residing in other territories or with  
missing residential information

\*People may belong to multiple groups and could be represented in the above breakdowns multiple times.  
# NDIS participants data as at 30 March 2022. ## Aged Care Residents data as at 1 April 2022.

Source: Australian Immunisation Register

# Vaccinations by residential location

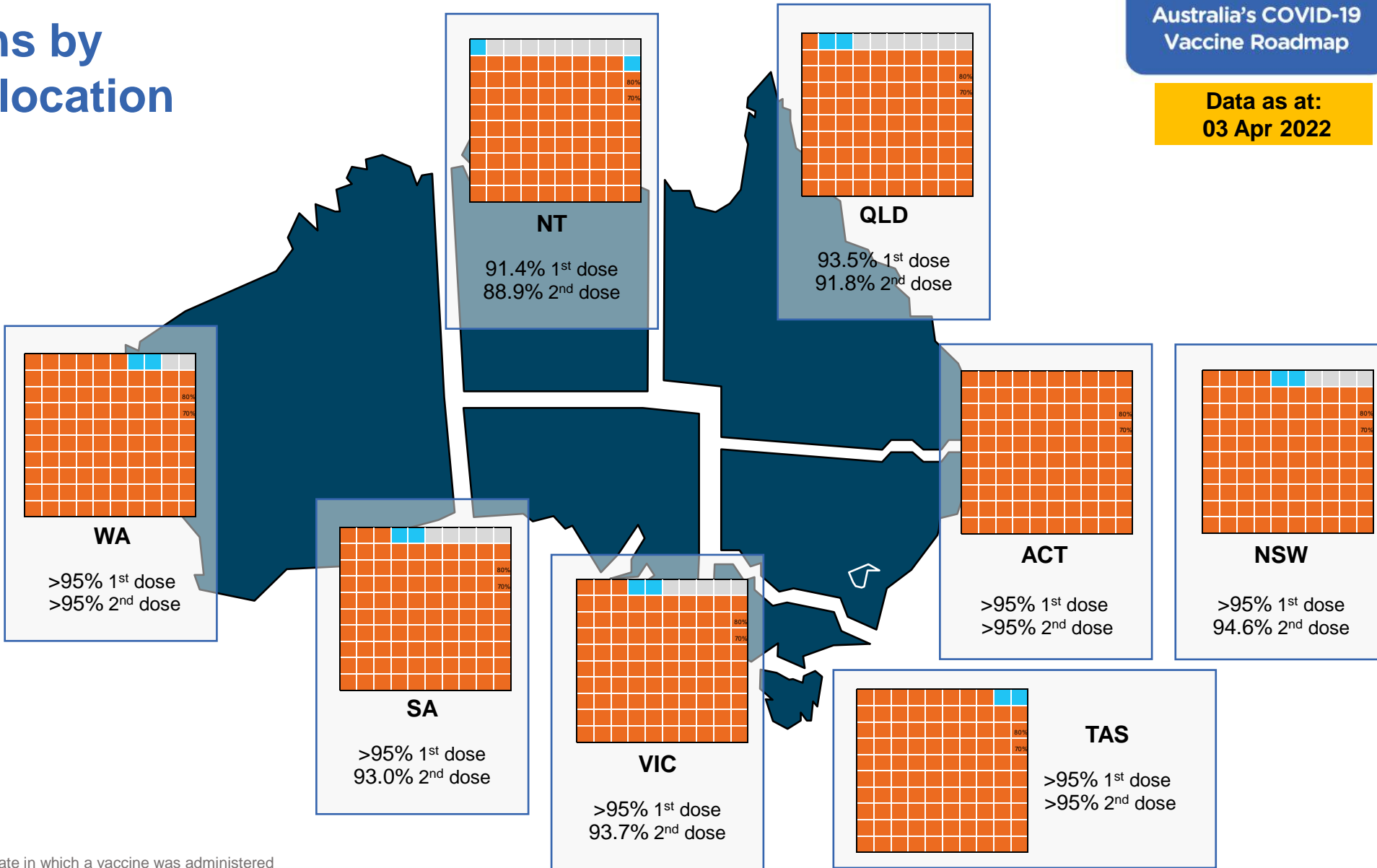
Data as at: 03 Apr 2022

## First doses

Age	Today	4 weeks ago	8 weeks ago
16+	>95%	>95%	>95%
50+	>95%	>95%	>95%
70+	>95%	>95%	>95%

## Fully vaccinated

Age	Today	4 weeks ago	8 weeks ago
16+	>95%	94.8%	94.1%
50+	>95%	>95%	>95%
70+	>95%	>95%	>95%



\*Residential state may differ from the state in which a vaccine was administered

# Commonwealth and Jurisdiction vaccine doses administered

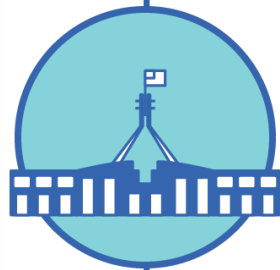
Data as at:  
03 Apr 2022



**56,607,528** total vaccine  
doses administered nationally as at 03 April  
**+ 20,464** recorded in the last 24 hours



**20,782,514**  
doses administered by state  
and territory facilities  
**+ 11,648**  
recorded in the last 24 hours



**35,825,014**  
doses administered by  
commonwealth facilities  
**+ 8,816**  
recorded in the last 24 hours

**34,557,277** total vaccine doses  
administered in primary care settings  
**1,267,737** total vaccine doses  
administered in aged care and disability  
settings

NSW	Jurisdictions	Commonwealth
Cumulative	5,060,850	12,516,152
Daily increase	2,130	2,452

VIC	Jurisdictions	Commonwealth
Cumulative	5,996,676	8,926,055
Daily increase	2,760	2,465

QLD	Jurisdictions	Commonwealth
Cumulative	3,807,472	6,915,613
Daily increase	1,270	2,024

WA	Jurisdictions	Commonwealth
Cumulative	2,450,251	3,743,154
Daily increase	1,572	1,252

TAS	Jurisdictions	Commonwealth
Cumulative	612,613	660,225
Daily increase	1,424	111

SA	Jurisdictions	Commonwealth
Cumulative	1,773,254	2,126,925
Daily increase	1,457	393

ACT	Jurisdictions	Commonwealth
Cumulative	755,471	708,037
Daily increase	750	108

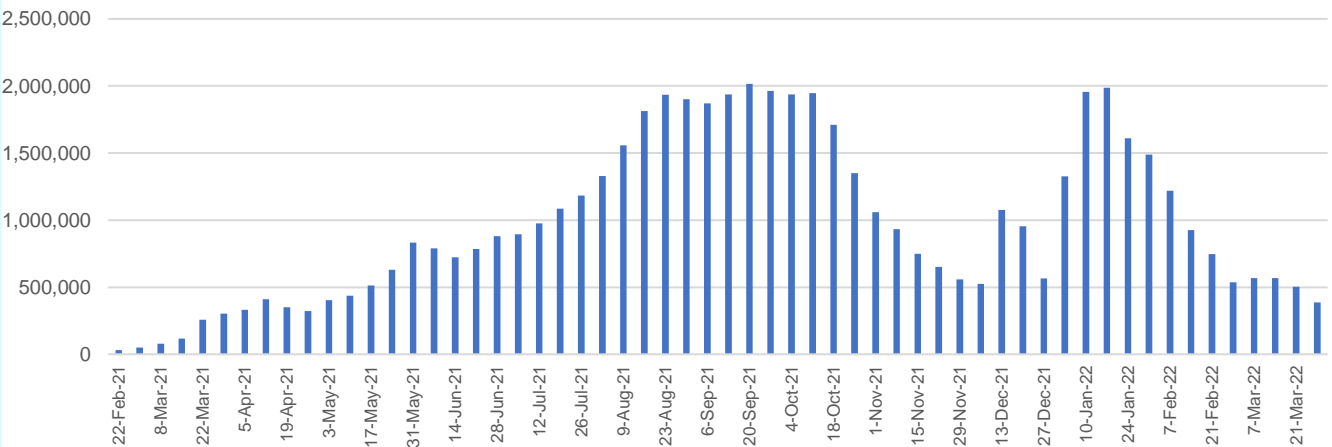
NT	Jurisdictions	Commonwealth
Cumulative	325,927	228,853
Daily increase	285	11

# Vaccine milestone charts

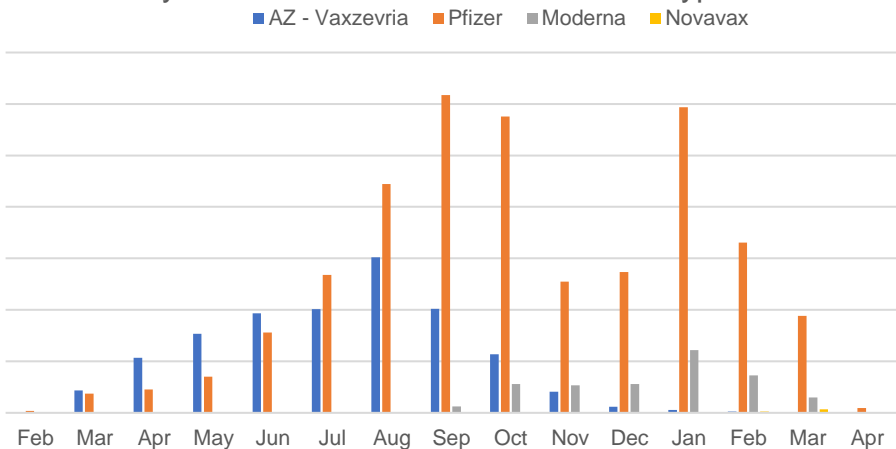
Data as at:  
03 Apr 2022

Australia's COVID-19  
Vaccine Roadmap

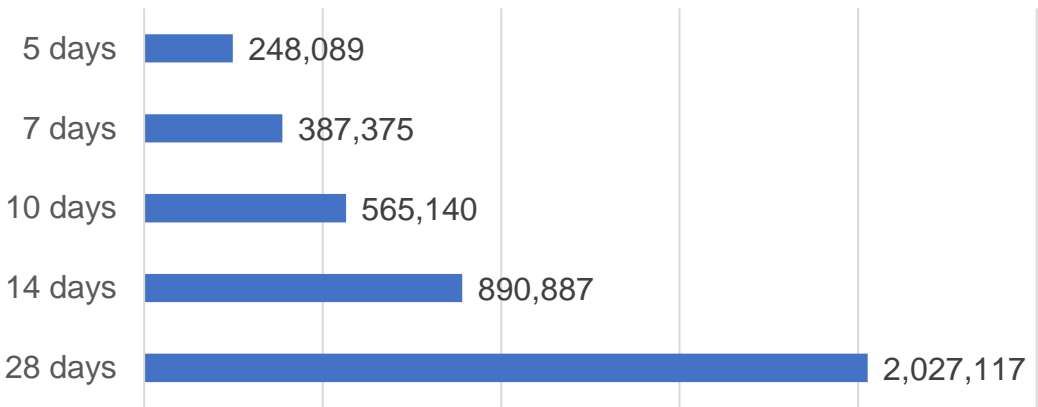
Doses Administered by Week



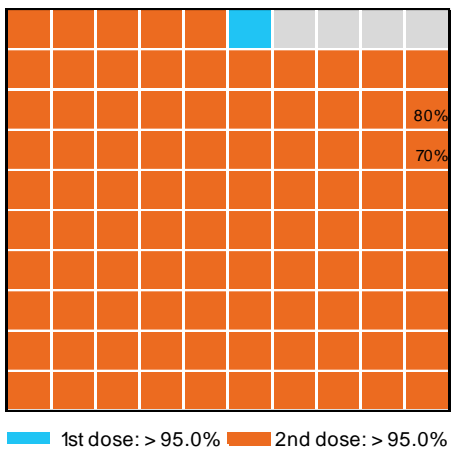
Doses by administration month and vaccine type



Doses Reported



Eligible population percentage coverage



\*Each square represents 1% of the national population.  
Squares are filled as milestones are achieved.

\*Sourced from the Australian Immunisation Register.

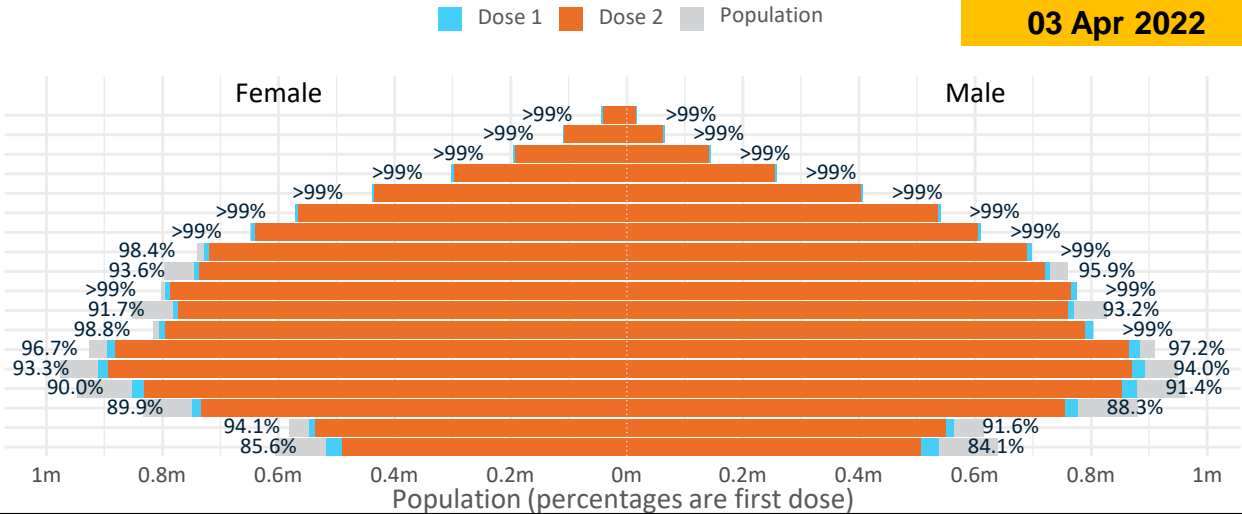
# Doses by age and sex

First and second doses by age and sex

	16+	50+	12-15	5-11
Dose 1	96.84% (19,968,391 doses / 20,619,959 people)	>99% (8,828,441 doses / 8,749,703 people)	84.91% (1,056,328 doses / 1,243,990 people)	52.43% (1,193,579 doses / 2,276,638 people)
Dose 2	95.18% (19,625,974 doses / 20,619,959 people)	>99% (8,719,102 doses / 8,749,703 people)	80.13% (996,849 doses / 1,243,990 people)	29.35% (668,264 doses / 2,276,638 people)

Data as at:  
03 Apr 2022

Age	Dose 1	Dose 2
95+	60,577 (>99%)	57,179 (>99%)
90-94	175,246 (>99%)	169,496 (>99%)
85-89	340,979 (>99%)	333,790 (>99%)
80-84	560,228 (>99%)	552,690 (>99%)
75-79	846,292 (>99%)	837,698 (>99%)
70-74	1,112,306 (>99%)	1,101,156 (>99%)
65-69	1,259,731 (>99%)	1,245,258 (99.0%)
60-64	1,426,322 (>99%)	1,409,796 (98.1%)
55-59	1,475,236 (94.8%)	1,458,260 (93.7%)
50-54	1,571,524 (>99%)	1,553,779 (>99%)
45-49	1,552,041 (92.6%)	1,532,443 (91.4%)
40-44	1,611,627 (>99%)	1,586,467 (97.9%)
35-39	1,783,580 (97.2%)	1,750,512 (95.4%)
30-34	1,810,238 (94.1%)	1,767,592 (91.9%)
25-29	1,740,146 (91.3%)	1,692,220 (88.8%)
20-24	1,531,632 (89.4%)	1,491,935 (87.1%)
16-19	1,110,686 (92.9%)	1,085,703 (90.8%)
12-15	1,056,328 (84.9%)	996,849 (80.1%)



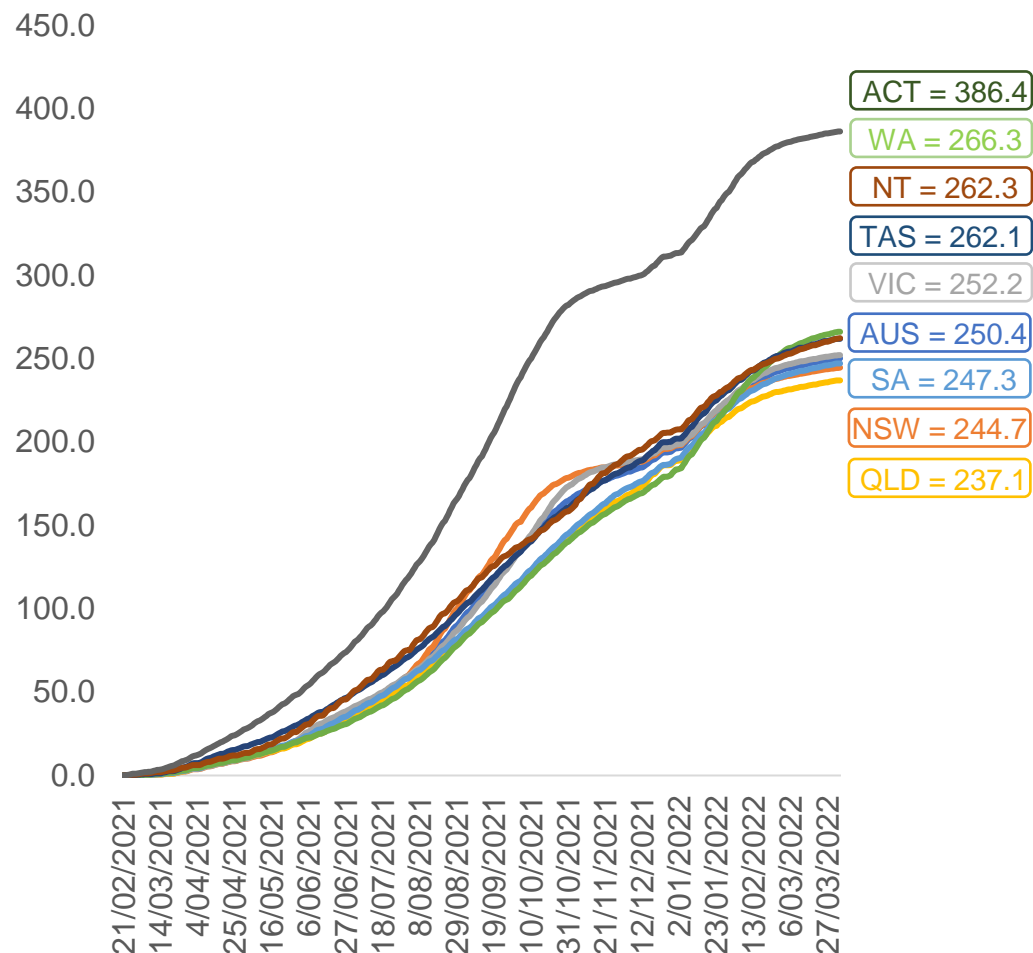
	AUS	ACT	NSW	NT	QLD	SA	TAS	VIC	WA
16 and over - dose 1	19,968,391	351,568	6,304,617	174,190	3,843,409	1,369,771	443,293	5,141,434	2,085,532
16 and over - dose 2	19,625,974	346,143	6,209,763	169,402	3,774,964	1,338,904	433,837	5,065,316	2,049,628
16 and over - population	20,619,959*	344,037	6,565,651	190,571	4,112,707	1,440,400	440,172	5,407,574	2,114,978
16 and over % with dose 1	96.84%	>99%	96.02%	91.40%	93.45%	95.10%	>99%	95.08%	98.61%
16 and over % with dose 2	95.18%	>99%	94.58%	88.89%	91.79%	92.95%	98.56%	93.67%	96.91%
5 to 11 - dose 1	1,193,579	31,845	355,191	13,162	208,378	84,108	28,786	325,041	139,456
5 to 11 - dose 2	668,264	22,530	204,227	6,358	115,665	48,622	20,105	180,269	67,335
5 to 11 - population	2,276,638	39,789	716,460	24,750	478,731	148,816	45,033	578,499	244,154
5 to 11 % with dose 1	52.43%	80.03%	49.58%	53.18%	43.53%	56.52%	63.92%	56.19%	57.12%
5 to 11 % with dose 2	29.35%	56.62%	28.51%	25.69%	24.16%	32.67%	44.65%	31.16%	27.58%
12 to 15 - dose 1	1,056,328	20,088	325,458	10,893	207,422	68,464	22,916	276,002	115,658
12 to 15 - dose 2	996,849	19,470	310,229	9,775	193,669	64,624	21,729	263,296	105,825
12 to 15 - population	1,243,990	19,693	390,330	13,060	270,146	82,747	26,308	308,611	132,869
12 to 15 % with dose 1	84.91%	>99%	83.38%	83.41%	76.78%	82.74%	87.11%	89.43%	87.05%
12 to 15 % with dose 2	80.13%	98.87%	79.48%	74.85%	71.69%	78.10%	82.59%	85.32%	79.65%

\*National population will not equal sum of listed jurisdictions due to a small number of people counted in national population residing in some 'other' territories. Sum of state doses will not add to national total as some records are unable to be geocoded to a State or Territory.  
Doses sourced from Australian Immunisation Register, population from ABS ERP June 2020



# Vaccinations by location

Cumulative total doses administered vs eligible state populations\*

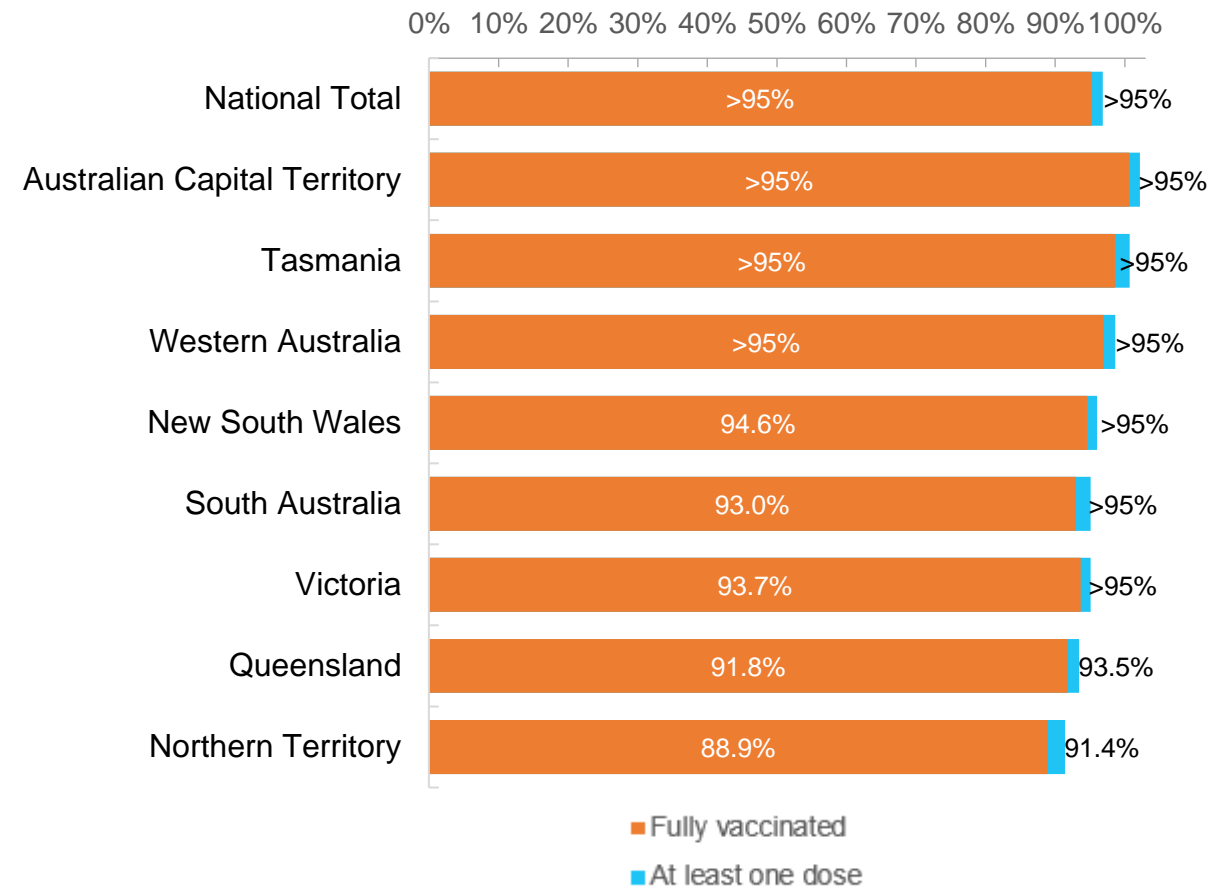


\*Not an indication of percentage vaccinated, numbers will exceed 100 due to multiple doses required per person of the population. All doses are included for those aged 12 and above, and are based on vaccination provider location.

Data as at:  
03 Apr 2022

Australia's COVID-19  
Vaccine Roadmap

First and Second Doses by residential location





# Aboriginal and Torres Strait Islander peoples

## Number of people vaccinated

Data as at:  
29 Mar 2022  
Updated weekly

Australia's COVID-19  
Vaccine Roadmap



**436,084**

people over the age of 16  
have had at least one dose

**84.2%**

of people over the age of 16  
have had at least one dose



**414,780**

people over the age of 16  
are fully vaccinated

**80.0%**

of people over the age of 16 are  
fully vaccinated



People aged 12 – 15 years

**48,579**

**42,396**

**68.4%**

At least one dose

**59.7%**

Fully vaccinated

### 178 Aboriginal community controlled health services (ACCHS)

0#

50

27

44

12

3

21

21

**ACT**

**NSW**

**NT**

**QLD**

**SA**

**TAS**

**VIC**

**WA**

Medicare Address State <sup>##</sup>	Individuals Dose 1	Individuals Dose 1 %	Individuals Dose 2	Individuals Dose 2 %
Australian Capital Territory	4,832	90.9%	4,709	88.6%
New South Wales	134,469	86.6%	131,243	84.6%
Northern Territory	42,185	89.3%	39,809	84.3%
Queensland	115,088	81.2%	109,024	76.9%
South Australia	19,764	79.6%	18,238	73.4%
Tasmania	13,863	88.4%	13,424	85.6%
Victoria	35,253	89.7%	34,396	87.5%
Western Australia	53,370	85.3%	48,462	77.5%
Unknown/Other Territories	17,260	65.7%	15,475	58.9%
<b>Totals</b>	<b>436,084</b>	<b>84.2%</b>	<b>414,780</b>	<b>80.0%</b>

Source: Australian Immunisation Register

\*Identifying as Aboriginal and Torres Strait Islander is optional and the estimated population may be under reported.

\*\*Includes all Aboriginal and Torres Strait Islander peoples who have received a vaccination, not limited to those administered in an ACCHS setting

#ACCHS in the ACT are currently operating as a Commonwealth Vaccine Clinics so not included to avoid double counting

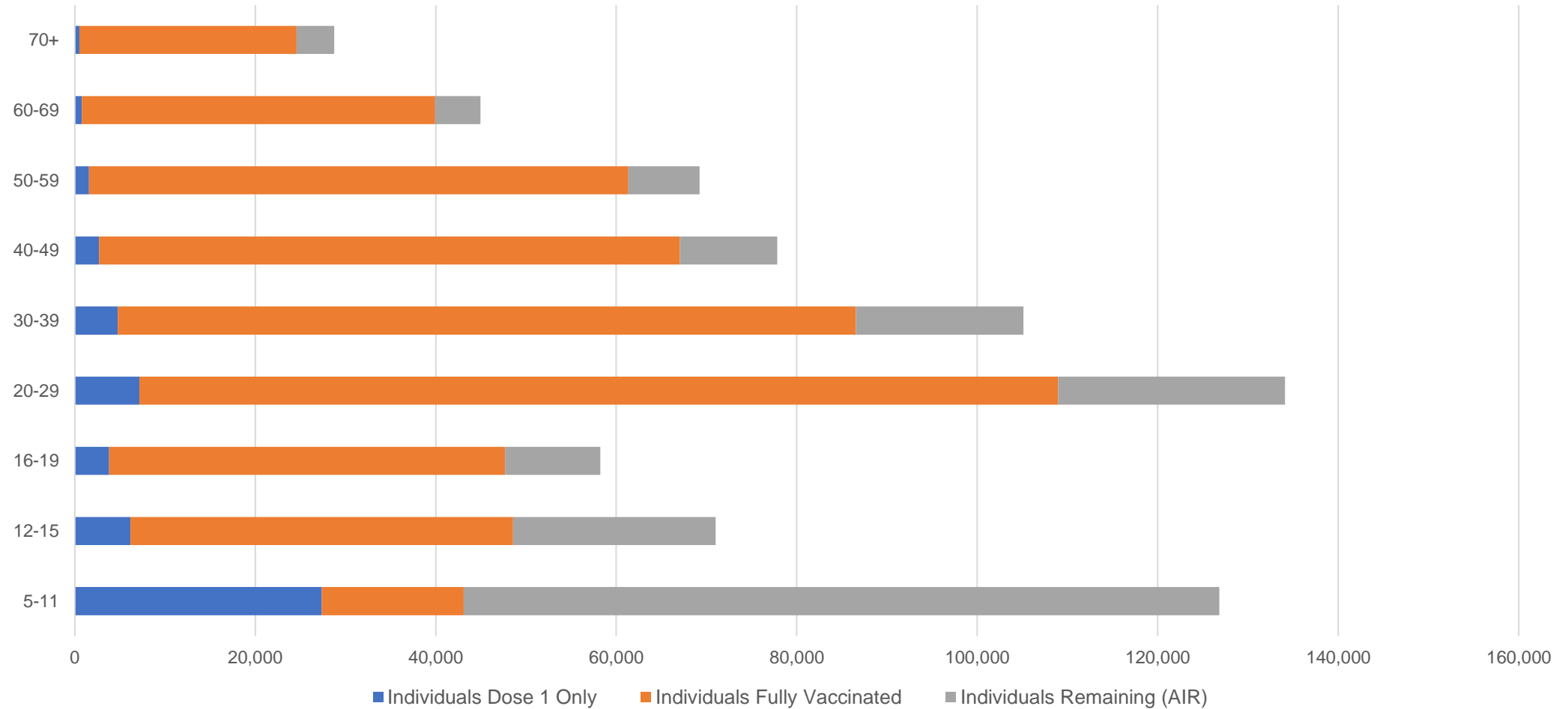
##The above table includes all identified Aboriginal and Torres Strait Islander people who are aged 16 and above by their state of residence.

# Aboriginal and Torres Strait Islander peoples

## Number of people vaccinated by age

Data as at:  
29 Mar 2022  
Updated weekly

Australia's COVID-19  
Vaccine Roadmap



Source: Australian Immunisation Register

# Commonwealth primary care

Data as at:  
03 Apr 2022

Australia's COVID-19  
Vaccine Roadmap



## Primary care vaccine administration sites

<b>5,793</b>	<b>128</b>	<b>178</b>	<b>3,587</b>
GPs	CVCs	ACCHS	Pharmacies



**34,557,277** total vaccine doses administered  
primary care settings as at 03 April  
**+ 8,601** recorded in the last 24 hours

## Primary care vaccinations by provider type

	Doses administered	Daily increase	7 day increase
General Practice* includes other Commonwealth	27,931,879	5,605	180,717
Pharmacy	6,625,398	2,996	103,192

**NSW**  
**11,963,206**  
(+924 daily increase)

**VIC**  
**8,614,541**  
(+978 daily increase)

**QLD**  
**6,638,934**  
(+543 daily increase)

**WA**  
**3,613,726**  
(+813 daily increase)

**TAS**  
**640,209**  
(-123<sup>#</sup> daily increase)

**SA**  
**2,048,841**  
(-88<sup>#</sup> daily increase)

**ACT**  
**542,954**  
(-77<sup>#</sup> daily increase)

**NT**  
**207,214**  
(-81<sup>#</sup> daily increase)

**287,652**

doses administered to persons  
residing in other territories or with  
missing residential information

\*General practice includes Commonwealth Vaccination Clinics, Aboriginal Community Health Centres, Royal Flying Doctor Service and other Commonwealth vaccination facilities

# Numbers are calculated as difference in daily cumulative reported numbers to allow for historical corrections in all data sources. This can occasionally result in negative numbers, such as for TAS, SA, ACT and NT, where historical details about doses have been updated.

Source: Australian Immunisation Register

Data as at:  
03 Apr 2022

# Commonwealth aged care and disability doses administered



**1,267,737** (+ 215 last 24 hours)

Total vaccine doses administered in aged care and disability facilities as at 03 April

Number of doses administered as part of the Commonwealth aged and disability care rollout

**NSW**  
**558,461**  
(-64# daily increase)

**VIC**  
**234,805**  
(-17# daily increase)

**QLD**  
**201,576**  
(+69 daily increase)

**WA**  
**106,830**  
(-43# daily increase)

**TAS**  
**22,493**  
(+32 daily increase)

**SA**  
**83,861**  
(-30# daily increase)

**ACT**  
**16,793**  
(-6# daily increase)

**NT**  
**7,472**  
(-5# daily increase)

**35,446**

doses administered to persons  
residing in other territories or with  
missing residential information

Source: Australian Immunisation Register

\*Sourced from the Australian Immunisation Register. Includes all persons vaccinated at participating residential aged care, disability and related industry settings.

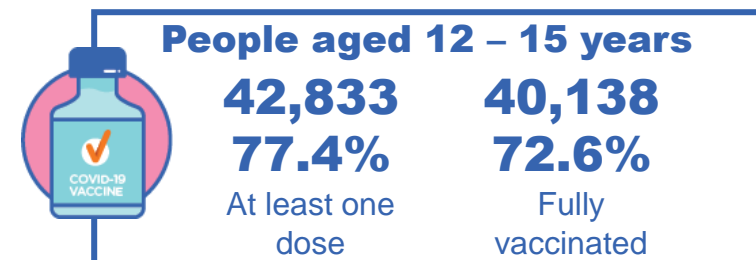
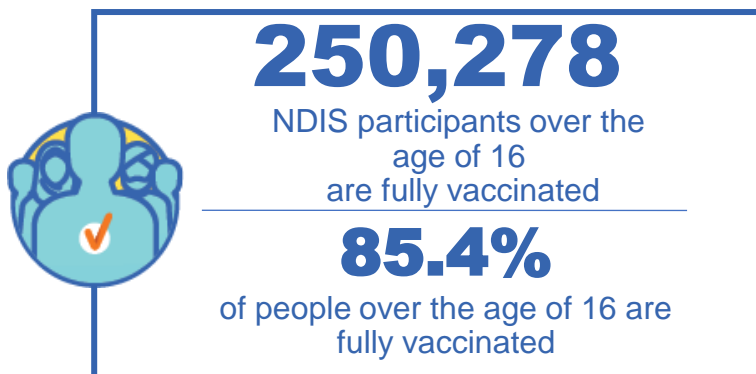
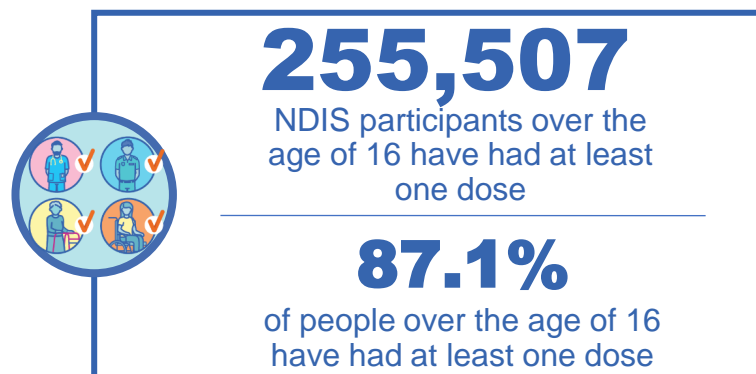
\*\*State level breakdown indicates the residential location and may not align to the state in which the vaccination occurred.

# Numbers are calculated as difference in daily cumulative reported numbers to allow for historical corrections in all data sources. This can occasionally result in negative numbers, such as for NSW, VIC, WA, SA, ACT and NT, where historical details about doses have been updated.

# National Disability Insurance Scheme (NDIS) reported vaccinations

Data as at:  
31 March 2022  
Updated weekly

Australia's COVID-19  
Vaccine Roadmap



## NDIS participant vaccinations

	People aged 16+ with at least one dose	People aged 16+ fully vaccinated	% People aged 16+ with at least one dose	% People aged 16+ fully vaccinated
ACT	4,840	4,774	89.2%	88.0%
NSW	78,610	77,294	87.6%	86.2%
NT	2,208	2,133	77.4%	74.8%
QLD	50,315	49,233	85.5%	83.7%
SA	20,809	20,248	84.8%	82.5%
TAS	6,408	6,238	87.2%	84.9%
VIC	68,002	66,752	88.3%	86.7%
WA	24,315	23,606	88.3%	85.7%
National	255,507	250,278	87.1%	85.4%

Source: Linkage between National Disability Insurance Agency data and the Australian Immunisation Register. Total NDIS participant numbers as at 28th February. Australian Immunisation Register data as at 30 March. Includes all participants regardless of residence type.

# National Disability Insurance Scheme (NDIS) reported vaccinations

Data as at:  
31 March 2022  
Updated Weekly

Australia's COVID-19  
Vaccine Roadmap

NATIONAL	Total people with at least one dose	People fully vaccinated	Total number of individuals in cohort	% People with at least one dose	% People fully vaccinated
NDIS participants living in disability accommodation	20,686	20,315	23,352	88.6%	87.0%

## NDIS participants in disability and aged care accommodation



Source: Linkage between National Disability Insurance Agency data and the Australian Immunisation Register. Includes participants residing in disability accommodation only.

Source: Total NDIS participant numbers as at 28th February. Participant data as at 29 March. Australian Immunisation Register data as at 30 March. Worker data as at 31 March.

## NDIS workforce vaccinations

	NDIS workers with at least one dose	NDIS workers fully vaccinated	% NDIS workers with at least one dose	% NDIS workers fully vaccinated
NSW	121,300	117,509	98.1%	95.1%
VIC	116,416	111,987	98.3%	94.6%
QLD	69,423	68,592	97.5%	96.3%
WA	32,844	30,848	98.6%	92.6%
SA	35,416	31,990	98.5%	89.0%
TAS	10,778	10,503	99.7%	97.2%
ACT	3,523	3,492	99.1%	98.2%
NT	3,378	3,205	97.4%	92.4%
<b>TOTAL</b>	<b>393,078</b>	<b>378,126</b>	<b>98.2%</b>	<b>94.5%</b>

Source: the NDIS Commission has established a requirement for registered NDIS providers who provide intensive disability support services to report on the vaccination status of workers they employ, or otherwise engage, to deliver NDIS-funded supports and services, and who are required to be vaccinated in accordance with in-force state and territory public health orders. The statistics reflect data reported to the NDIS Commission by registered NDIS providers and should be considered indicative and subject to change

Note: Some registered NDIS providers are yet to report on the vaccination status of their workforce. The NDIS Commission is working with those providers around reporting requirements.

Remaining workers not included include those exempt from vaccination requirements, workers whose vaccination status is not yet verified by the provider (such as workers on leave) and provider reporting anomalies.

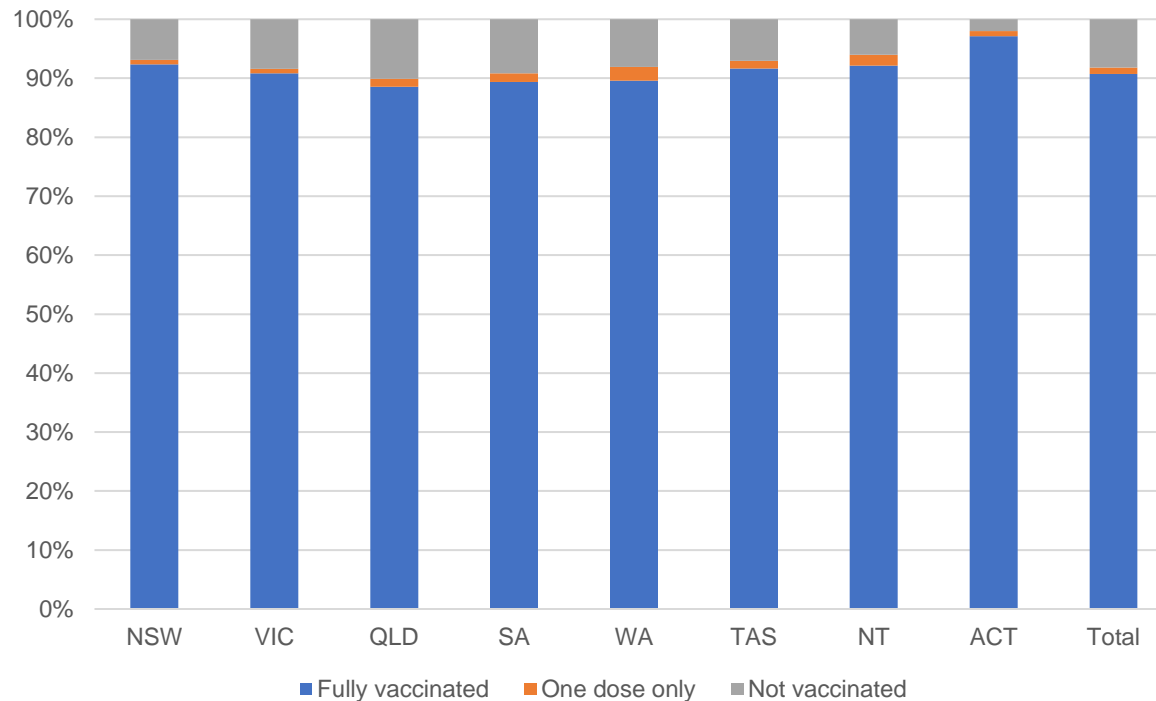
# Residential aged care vaccination rollout

Australia's COVID-19  
Vaccine Roadmap

Data as at:  
31 Mar 2022  
Updated weekly



## Aged care resident vaccinations



## Aged care worker vaccinations

Jurisdictions	Total workers with at least one dose	Workers fully vaccinated	% Workers with at least one dose	% Workers fully vaccinated
NSW	77,436	77,331	97.6%	97.5%
VIC	65,380	65,378	95.3%	95.3%
QLD	46,376	46,370	95.2%	95.2%
SA	26,364	26,344	97.6%	97.5%
WA	23,838	23,836	98.9%	98.9%
TAS	7,645	7,645	100.0%	100.0%
NT	847	847	100.0%	100.0%
ACT	2,987	2,987	100.0%	100.0%
Total	250,873	250,738	96.8%	96.7%

Source: My Aged Care Portal vaccination progress

\*Status updates are provided by facilities at least once per week. Reporting is updated Monday to Friday to encompass different facility updates being made on different days.

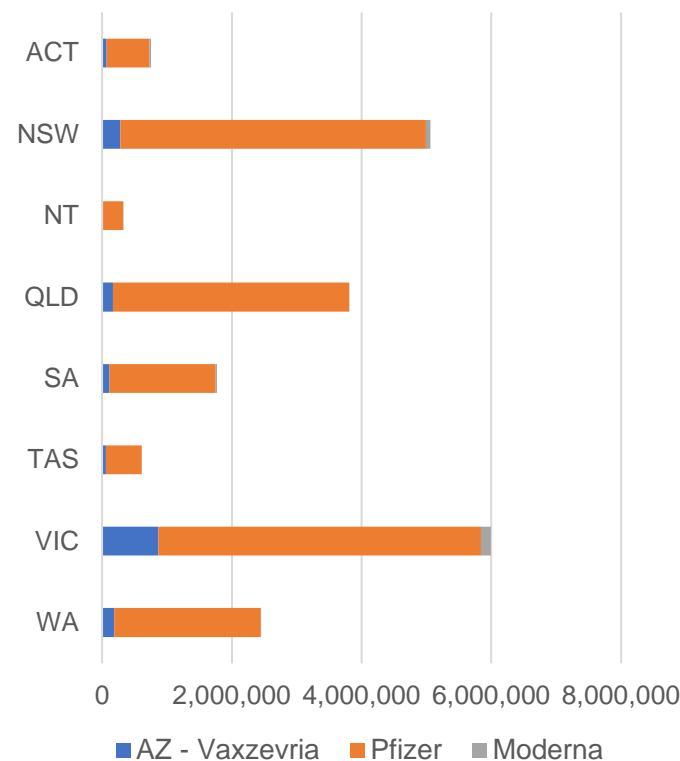
Data is sourced directly from Aged Care Service Providers and is not drawn or closely aligned with data from AIR due to inconsistencies and potential lags in uploading of records.



Data as at:  
03 Apr 2022

# Jurisdiction administered

Total vaccine doses administered in State and Territory clinics as at 03 April



**20,782,514** total vaccine doses administered  
in State and Territory clinics as at 03 April  
+ **11,648** recorded in the last 24 hours  
+ **100,579** recorded in the last 7 days

**NSW**  
**5,060,850**  
(+2,130 daily  
increase)

**VIC**  
**5,996,676**  
(+2,760 daily  
increase)

**QLD**  
**3,807,472**  
(+1,270 daily  
increase)

**WA**  
**2,450,251**  
(+1,572 daily  
increase)

**TAS**  
**612,613**  
(+1,424 daily  
increase)

**SA**  
**1,773,254**  
(+1,457 daily  
increase)

**ACT**  
**755,471**  
(+750 daily  
increase)

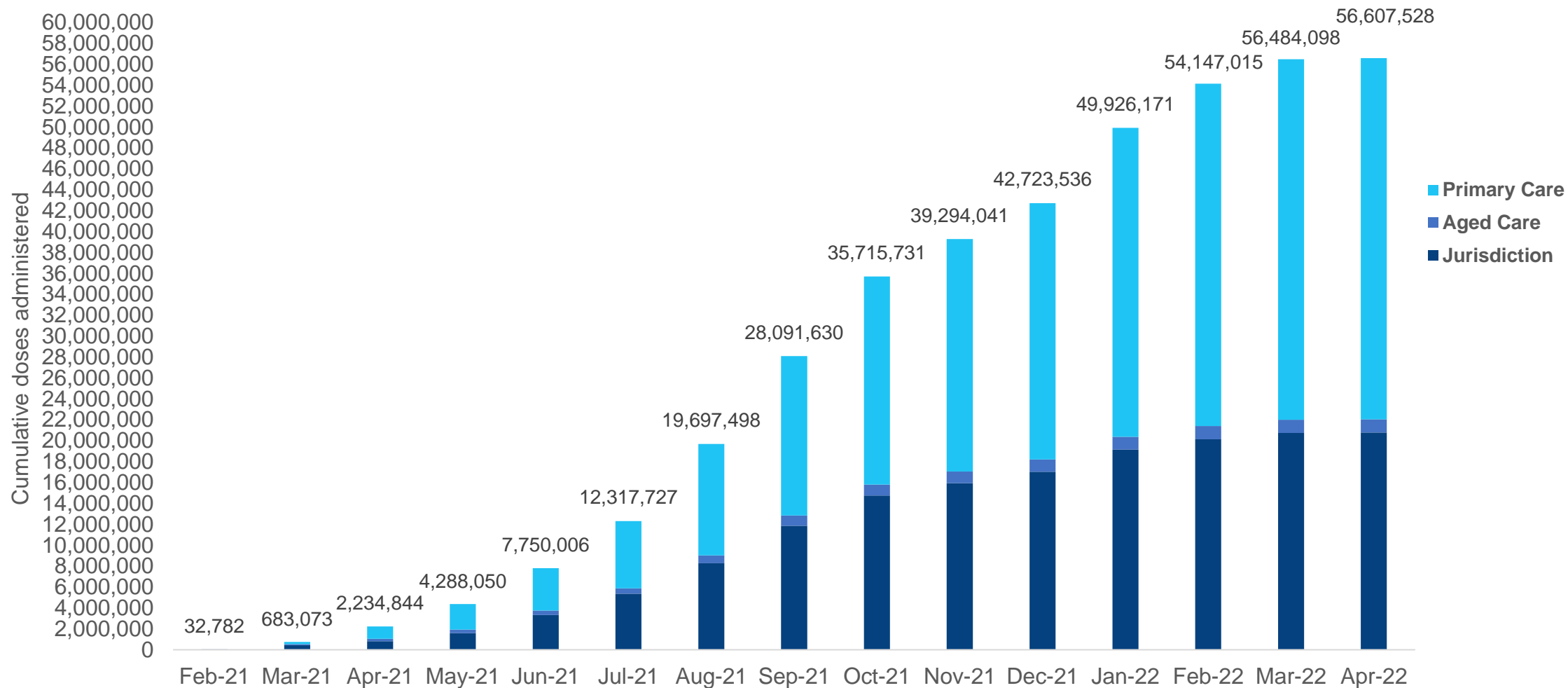
**NT**  
**325,927**  
(+285 daily  
increase)

\*Sourced from the Australian Immunisation Register. Numbers are calculated as difference in daily cumulative reported numbers to allow for historical corrections.

Source: Australian Immunisation Register

# Cumulative doses administered by channel

Data as at:  
03 Apr 2022



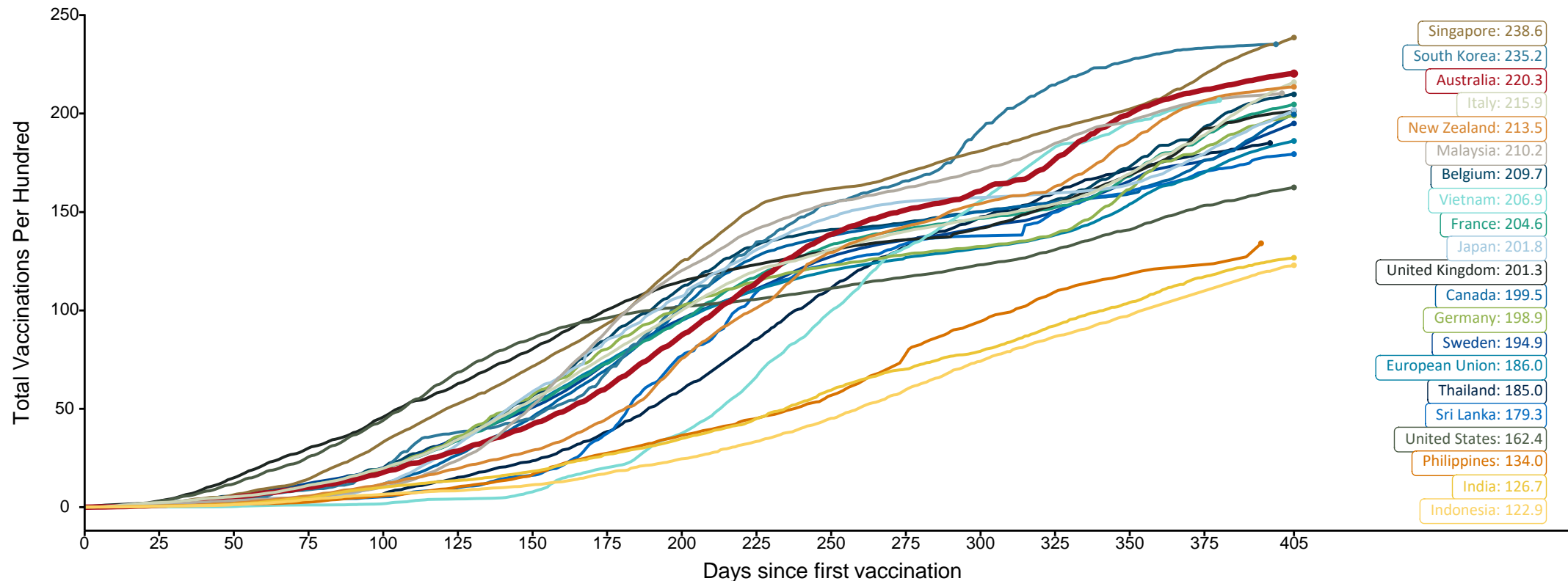
Source: Australian Immunisation Register

# Doses at equivalent stages of rollout (Day 405)

Data as at:  
03 Apr 2022

The x-axis is truncated at the length of Australia's vaccination program. Countries with intermittent reporting have had their doses per 100 imputed to Australia's current stage of rollout. Israel excluded as it is beyond scale of the graph

Cumulative doses administered (03 Apr): **56,607,528**



Note: From 11 January 2022, data for Australia includes all doses administered to people 5 and over. Prior to 11 January, data was for 12 and over.

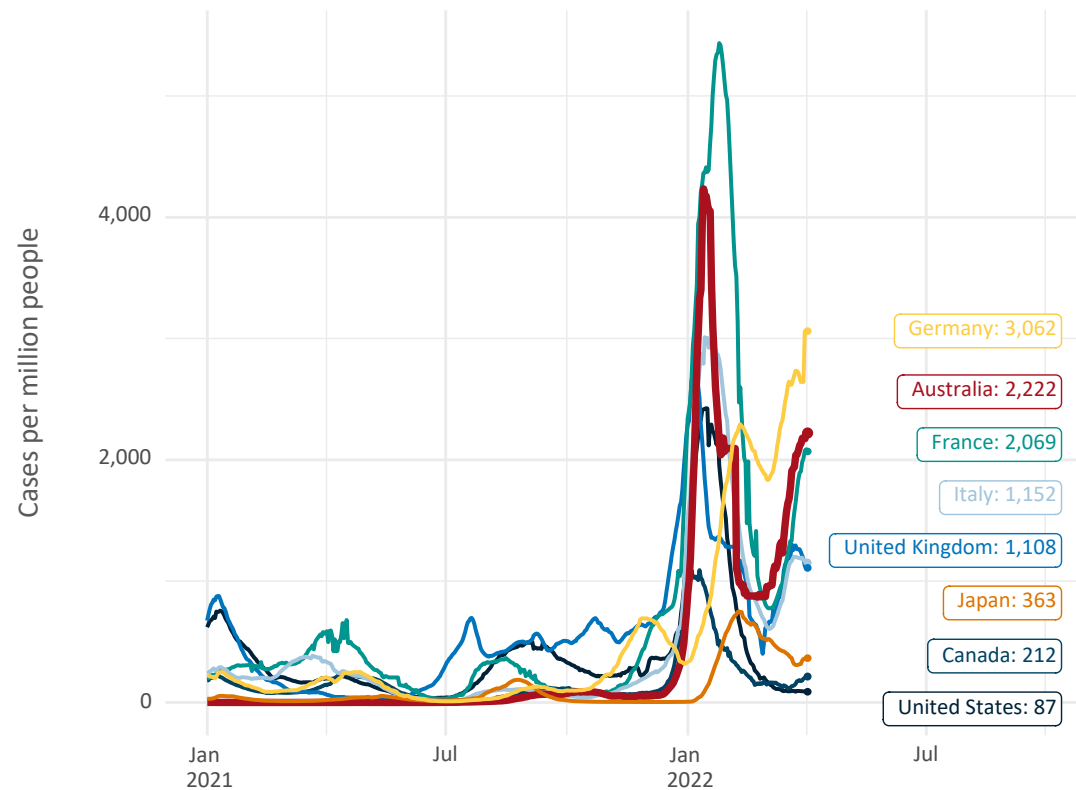
Source: Department of Health (Australia), Our World in Data (international)

Latest data: 03 April

Data as at:  
03 Apr 2022

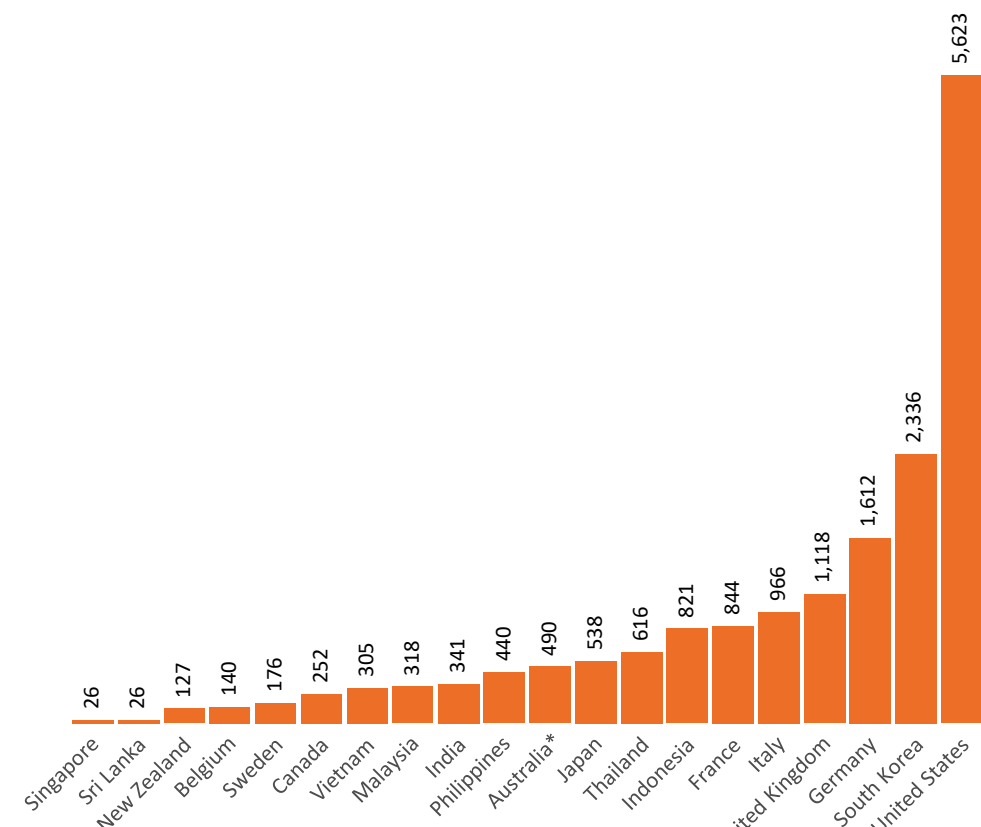
# International data – COVID-19

New daily cases per million in 2021, Australia and G7 countries  
Smoothed - 7 day average



Source: OWID  
Data downloaded: 04 Apr 2022 07:30  
Latest data: 02 Apr 2022

COVID-19 deaths in past 7 days - Australia and select countries



Source: OWID  
Data downloaded: 04 Apr 2022 07:30  
Latest data: 02 Apr 2022

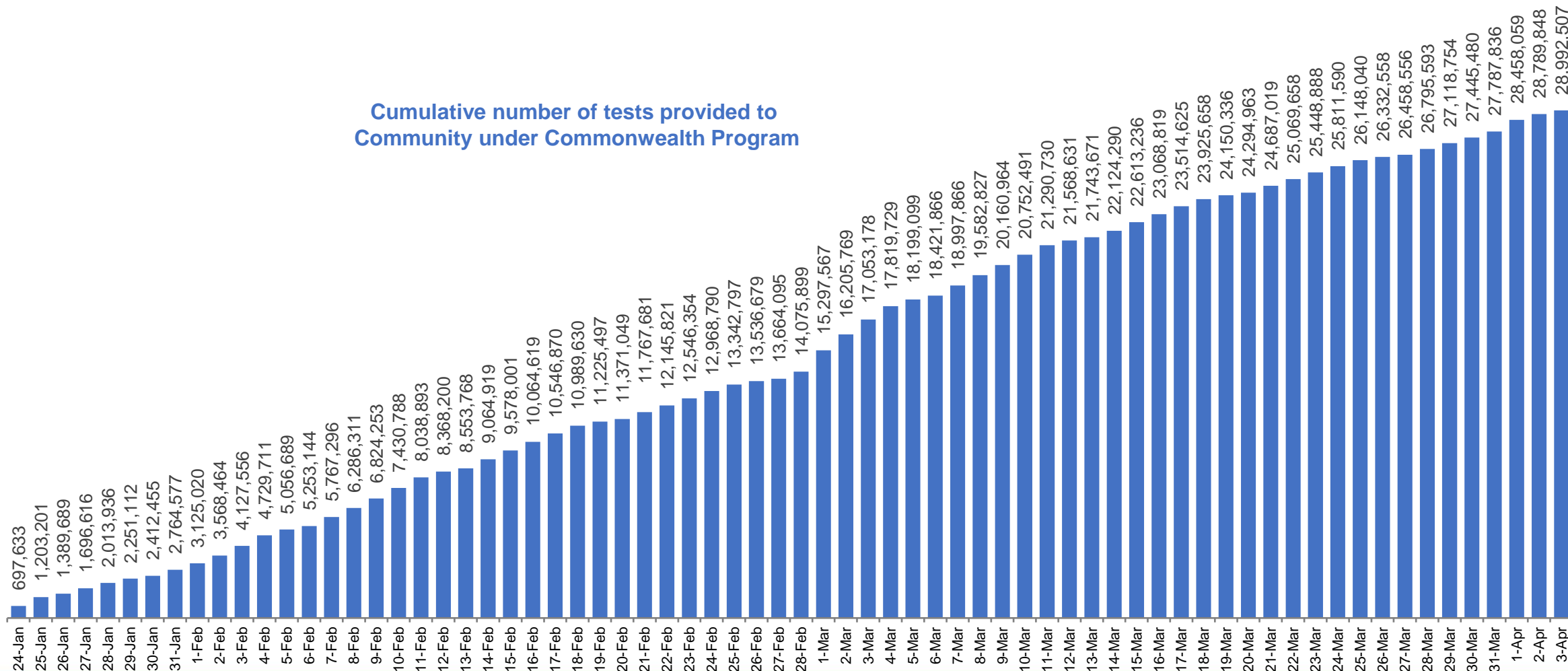
\* NSW reported 331 additional deaths on 1 April 2022 due to a cross-check with NSW Registry of Births, Deaths and Marriages revealing additional deaths between 1 January 2020 and 23 March 2022.

Data as at:  
3 April 2022

# Concessional rapid antigen test program

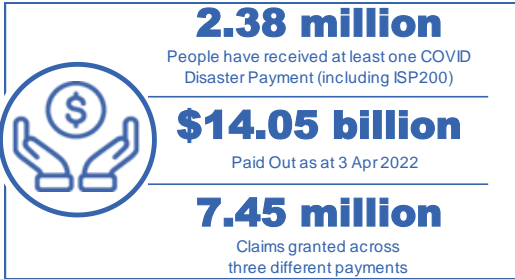
5,623 pharmacies have delivered over 28.9 million rapid antigen tests to more than 4.3m eligible concession card holders under the Government's concessional rapid antigen test program.

Cumulative number of tests provided to  
Community under Commonwealth Program



# Pandemic Response Payments

Data as at midnight: 3 Apr 2022  
Updated weekly



COVID Disaster Payment:	5.89 million claims received - 2.19 million individuals paid a total of \$12.59 billion.
\$200 Income Support Payment:	353,000 claims received - 183,000 individuals paid a total of \$268.9 million.
Pandemic Leave Disaster Payment:	1.73 million claims received - 1,052,000 individuals paid a total of \$1.19 billion.

## COVID-19 DISASTER PAYMENTS

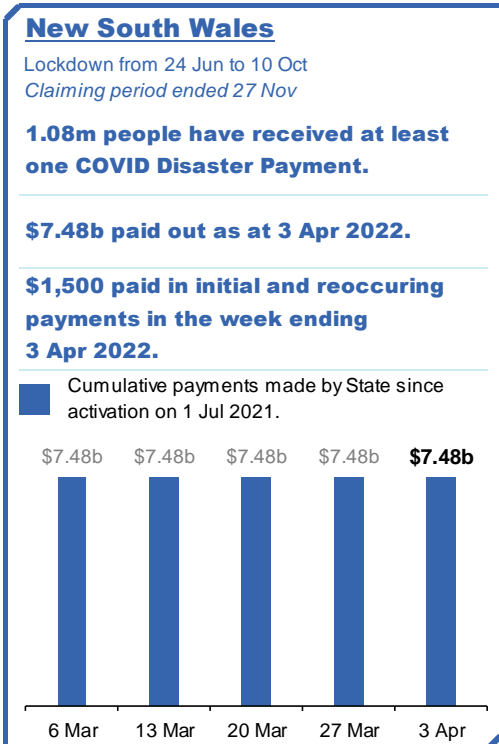
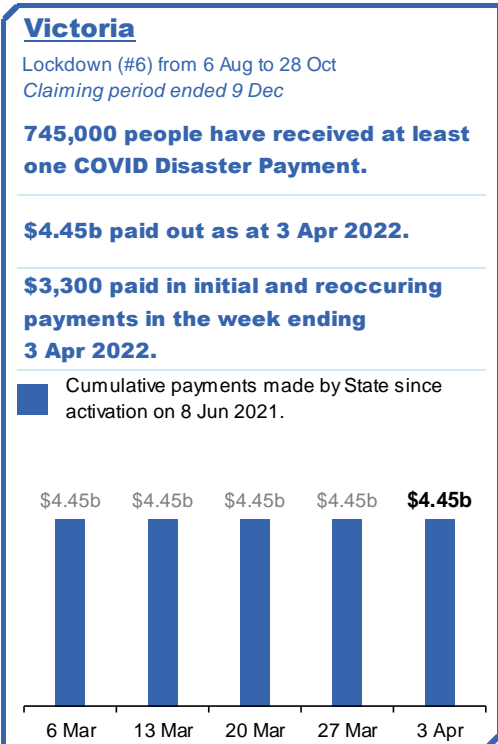
**THREE PAYMENTS AVAILABLE**

**COVID Disaster Payment**  
assisting during a lockdown event in a Commonwealth hotspot.

**Income Support Payment \$200**  
for income support recipients who lost at least 8 hours of work.

**Pandemic Leave Disaster Payment**  
for those who have to self-isolate, quarantine or care.

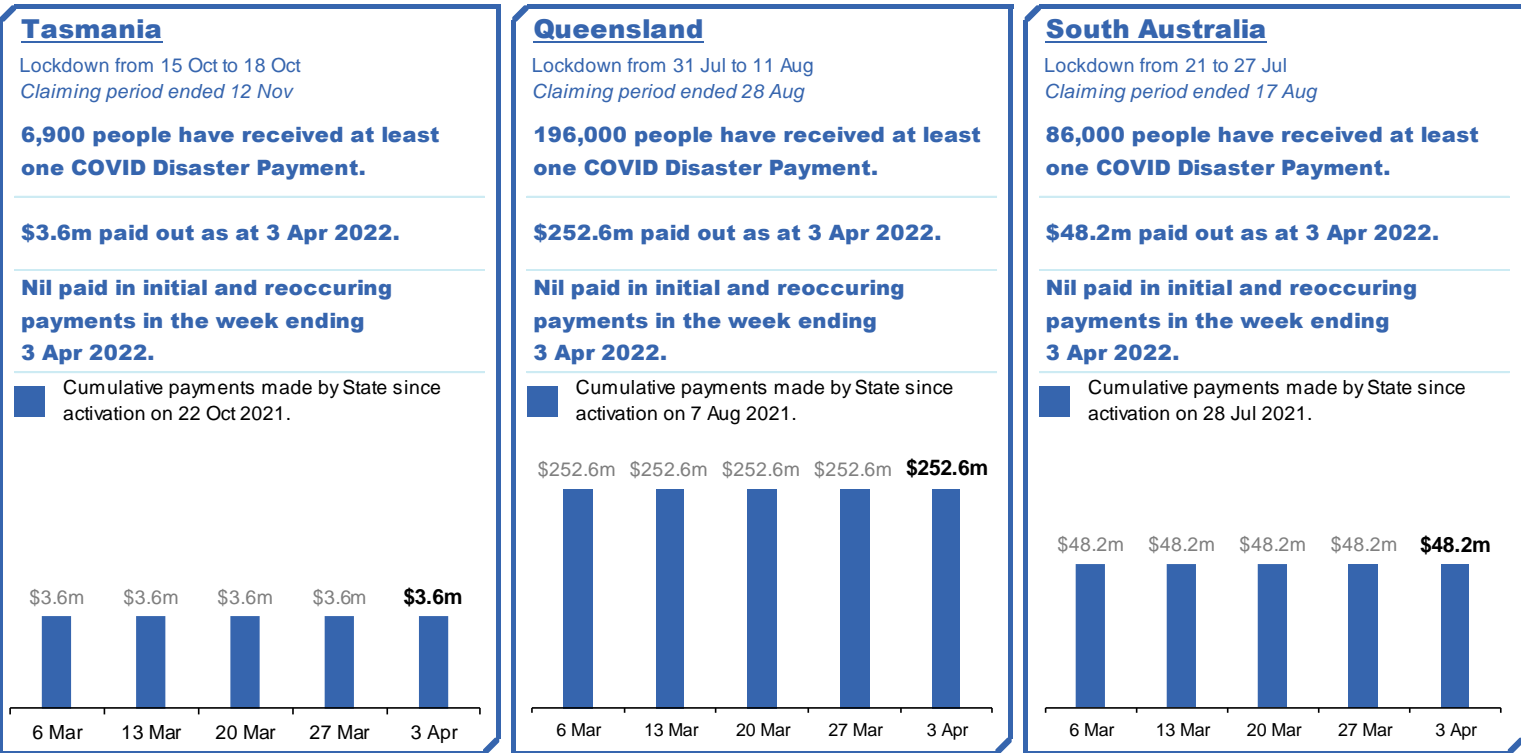
For more information visit:  
[servicesaustralia.gov.au](https://servicesaustralia.gov.au)



# Pandemic Response Payments (continued)

Data as at midnight: 3 Apr 2022  
Updated weekly

## COVID-19 DISASTER PAYMENTS





# Administration and Utilisation

## Doses as at 3 April 2022

	Ordered	Available	Administered	Stock on Hand at Sites	Estimated Dose Utilisation %
	Up to 03/04/22	Delivered up to 27/03/22 including redistributions	Up to 03/04/22		(see note)
NSW	6,111,372	6,111,372	5,060,850	439,385	93%
VIC	6,991,654	6,990,754	5,996,676	359,115	96%
QLD	4,846,902	4,805,242	3,807,472	517,358	89%
WA	2,648,818	2,646,298	2,450,251	90,497	Fully utilised
SA	2,151,120	2,122,120	1,773,254	136,654	94%
TAS	654,290	654,290	612,613	1,419	Fully utilised
NT	401,354	391,366	325,927	30,963	93%
ACT	651,286	651,286	755,471	10,941	Fully utilised
Jurisdiction delivered total	24,456,796	24,372,728	20,782,514	1,586,331	95%
Commonwealth Vaccination Providers	1,370,098	1,371,076	1,267,737	6,101	Fully utilised
Commonwealth Primary Care & Other	51,476,598	50,867,908	34,557,277	11,233,300	78%
Total	77,303,492	76,611,712	56,607,528	12,825,732	84%

### About this data

- Ordered – Total doses delivered to sites. Based on logistics provider data. This figure includes doses allocated for administration in the coming week.
- Available – total doses that could have been administered to date, less doses re-distributed from States & Territories to Primary Care or Commonwealth Vaccination Providers (i.e., does not include those deliveries recently received, and intended for use in the coming week).
- Administered – Doses administered as at 3 April 2022.
- Stock on Hand at Sites – Available doses minus Administered doses and a small % wastage.
- The dose utilisation is calculated based on the total doses administered and a small % wastage in line with international standards in relation to total available doses.
- For Commonwealth Vaccination Providers, the doses available for administration is for the full period (up to 3 April 2022).
- Commonwealth Vaccination Providers utilisation is not provided as the in-reach rollout is demand-based.