



Australian Government
Operation COVID Shield

COVID-19 Vaccine Roll-out

28 April 2022

Data as at:
27 Apr 2022

Total vaccine doses



57,609,488 total vaccine doses administered nationally as at 27 April

+60,526 recorded in the last 24 hours



20,015,529

people have had at least one dose

>95%

of people over the age of 16 have had at least one dose



19,681,761

people are fully vaccinated

>95%

of people over the age of 16 are fully vaccinated



13,384,412

people over the age of 16 who have received more than two doses

NSW
17,872,168
(+17,474 daily increase)

VIC
15,156,568
(+14,514 daily increase)

QLD
10,906,725
(+11,588 daily increase)

WA
6,329,444
(+7,183 daily increase)

TAS
1,297,467
(+1,946 daily increase)

SA
3,970,977
(+4,928 daily increase)

ACT
1,501,231
(+2,055 daily increase)

NT
574,908
(+838 daily increase)

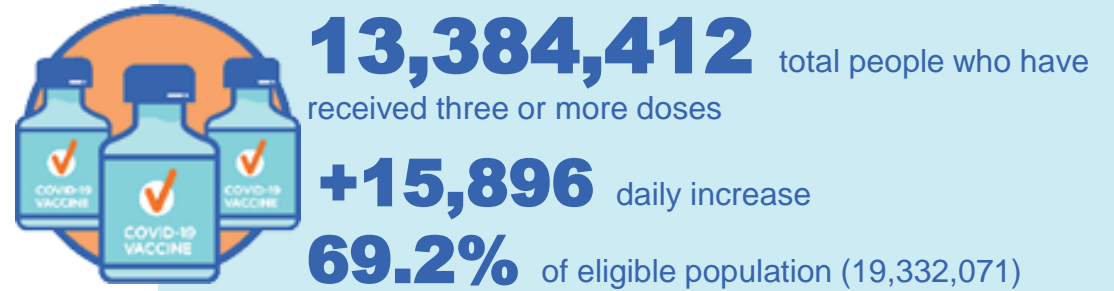
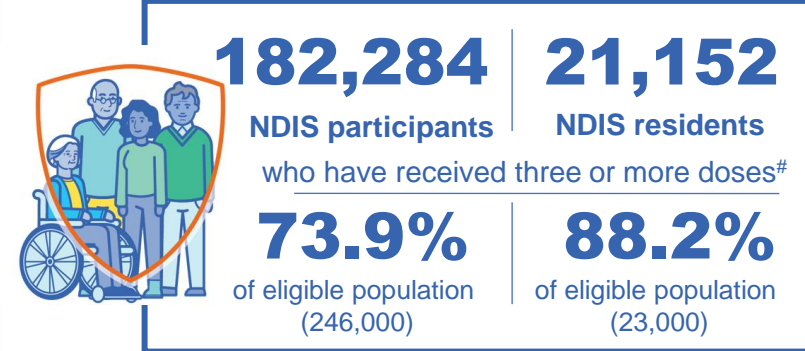
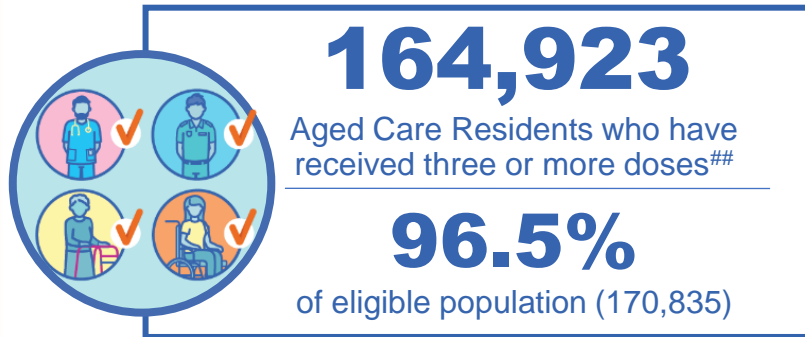
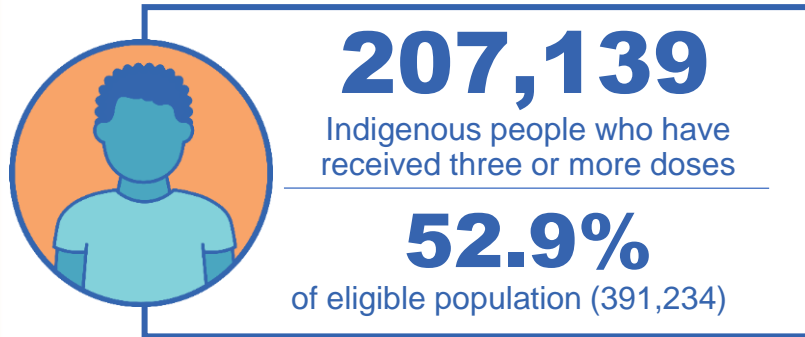
*Administration state breakdown indicates state in which a vaccine was administered

**Overall dose count includes instances of more than three doses per person in a small number of cases.

Source: Australian Immunisation Register

Booster Vaccinations

Data as at:
27 Apr 2022



	Number of People	Daily Increase	% of Eligible
NSW	4,090,888	4,119	66.2%
VIC	3,586,880	3,210	71.2%
QLD	2,317,569	2,855	62.6%
WA	1,633,500	2,915	85.0%
SA	947,651	1,288	72.4%
TAS	305,423	570	72.0%
ACT	265,606	205	77.0%
NT	124,244	461	75.4%

*People may belong to multiple groups and could be represented in the above breakdowns multiple times.
NDIS participants data as at 26 April 2022. ## Aged Care Residents data as at 26 April 2022.

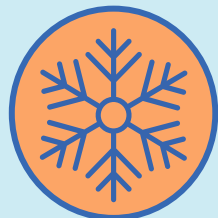
Source: Australian Immunisation Register

112,651 doses administered to persons residing in other territories or with missing residential information

Winter / Fourth Doses

Data as at:
24 Apr 2022
Updated weekly

Australia's COVID-19
Vaccine Roadmap



345,829 total people (16+) who have received four or more doses

+132,575 weekly increase

	Number of People 16+	Weekly Increase
ACT	9,937	3,277
NSW	121,436	42,222
NT	2,317	614
QLD	65,478	28,271
SA	23,570	10,163
TAS	9,213	3,796
VIC	85,891	32,737
WA	26,277	10,939

1,710 doses administered to persons
residing in other territories or with
missing residential information

Source: Australian Immunisation Register

Data as at: 27 Apr 2022

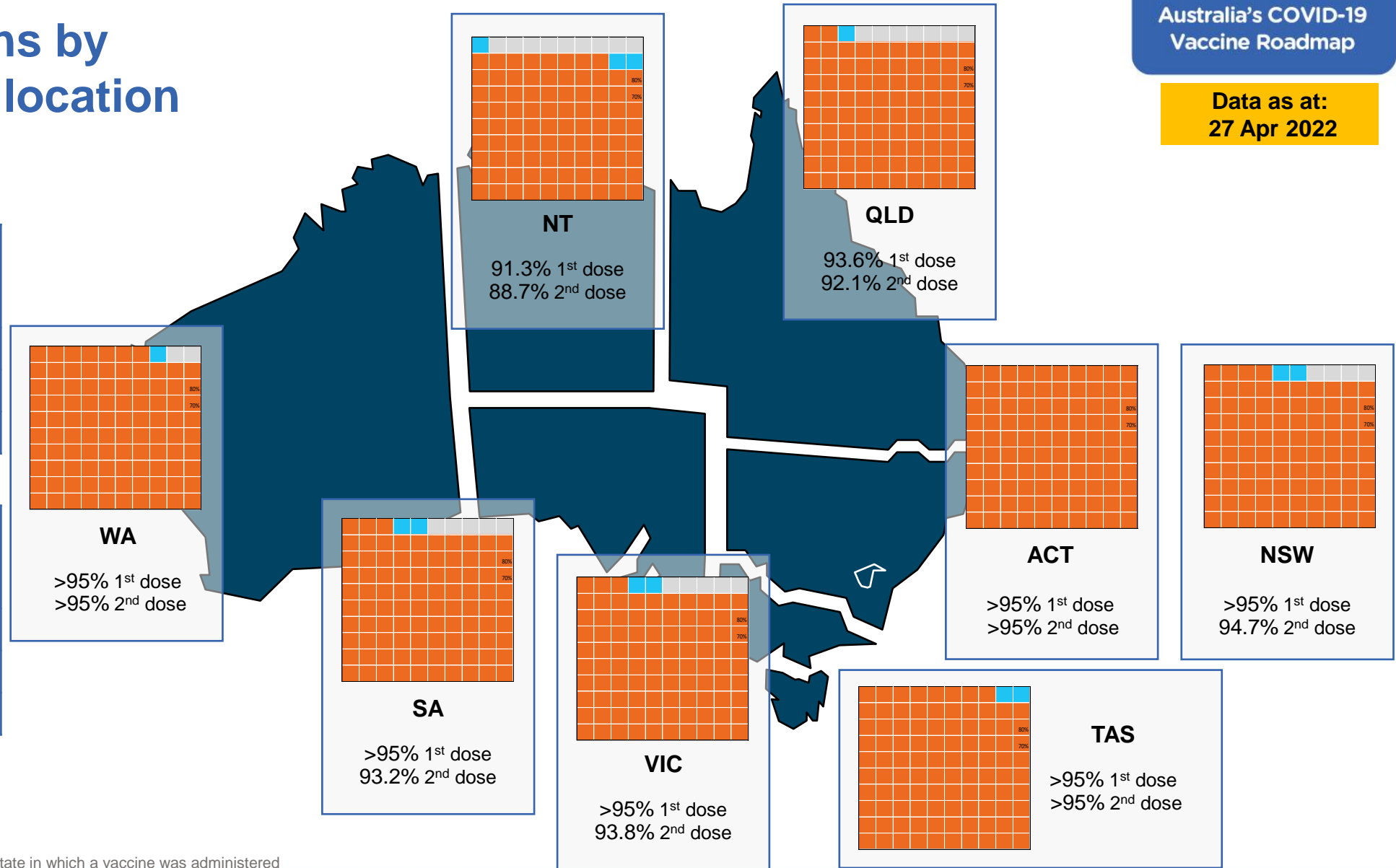
Vaccinations by residential location

First doses

Age	Today	4 weeks ago	8 weeks ago
16+	>95%	>95%	>95%
50+	>95%	>95%	>95%
70+	>95%	>95%	>95%

Fully vaccinated

Age	Today	4 weeks ago	8 weeks ago
16+	>95%	>95%	94.8%
50+	>95%	>95%	>95%
70+	>95%	>95%	>95%



*Residential state may differ from the state in which a vaccine was administered

Commonwealth and Jurisdiction vaccine doses administered

Data as at:
27 Apr 2022



57,609,488 total vaccine doses administered nationally as at 27 April

+ 60,526 recorded in the last 24 hours

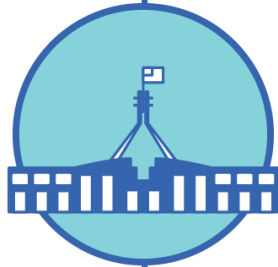


21,001,637

doses administered by state and territory facilities

+ 8,562

recorded in the last 24 hours



36,607,851

doses administered by commonwealth facilities

+ 51,964

recorded in the last 24 hours

35,334,184 total vaccine doses administered in primary care settings

1,273,667 total vaccine doses administered in aged care and disability settings

NSW	Jurisdictions	Commonwealth
Cumulative	5,096,307	12,775,861
Daily increase	1,058	16,416

VIC	Jurisdictions	Commonwealth
Cumulative	6,052,104	9,104,464
Daily increase	2,518	11,996

QLD	Jurisdictions	Commonwealth
Cumulative	3,835,579	7,071,146
Daily increase	710	10,878

WA	Jurisdictions	Commonwealth
Cumulative	2,486,595	3,842,849
Daily increase	1,372	5,811

TAS	Jurisdictions	Commonwealth
Cumulative	619,151	678,316
Daily increase	219	1,727

SA	Jurisdictions	Commonwealth
Cumulative	1,797,542	2,173,435
Daily increase	1,341	3,587

ACT	Jurisdictions	Commonwealth
Cumulative	775,365	725,866
Daily increase	901	1,154

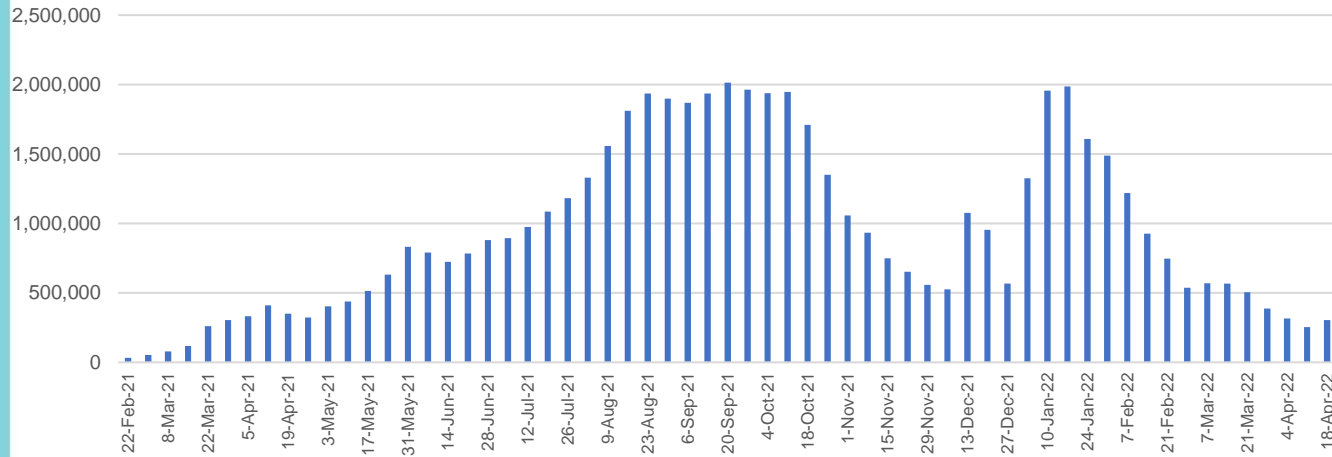
NT	Jurisdictions	Commonwealth
Cumulative	338,994	235,914
Daily increase	443	395

Vaccine milestone charts

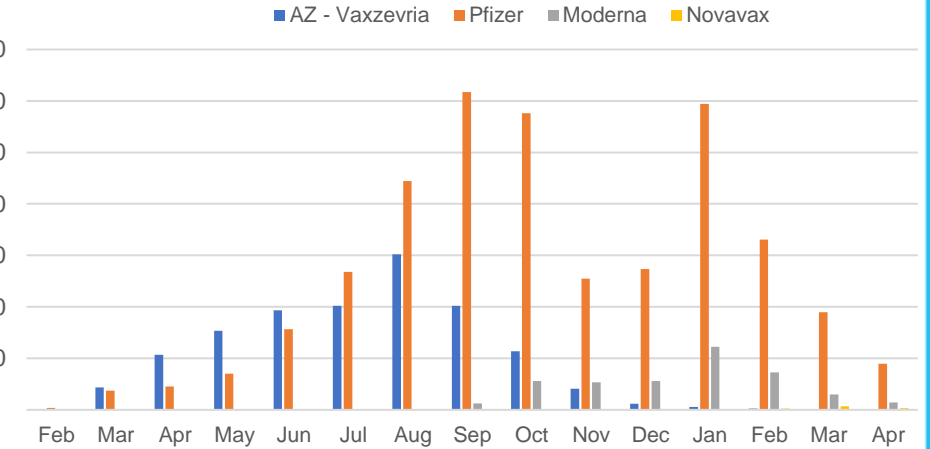
Data as at:
27 Apr 2022

Australia's COVID-19
Vaccine Roadmap

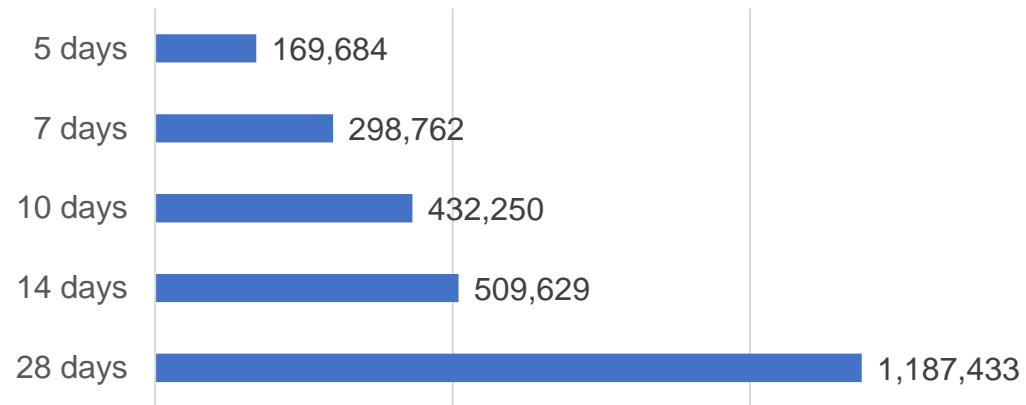
Doses Administered by Week



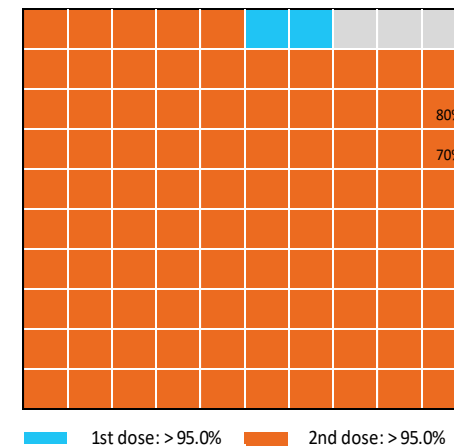
Doses by administration month and vaccine type



Doses Reported



Eligible population percentage coverage



*Each square represents 1% of the national population. Squares are filled as milestones are achieved.

*Sourced from the Australian Immunisation Register.

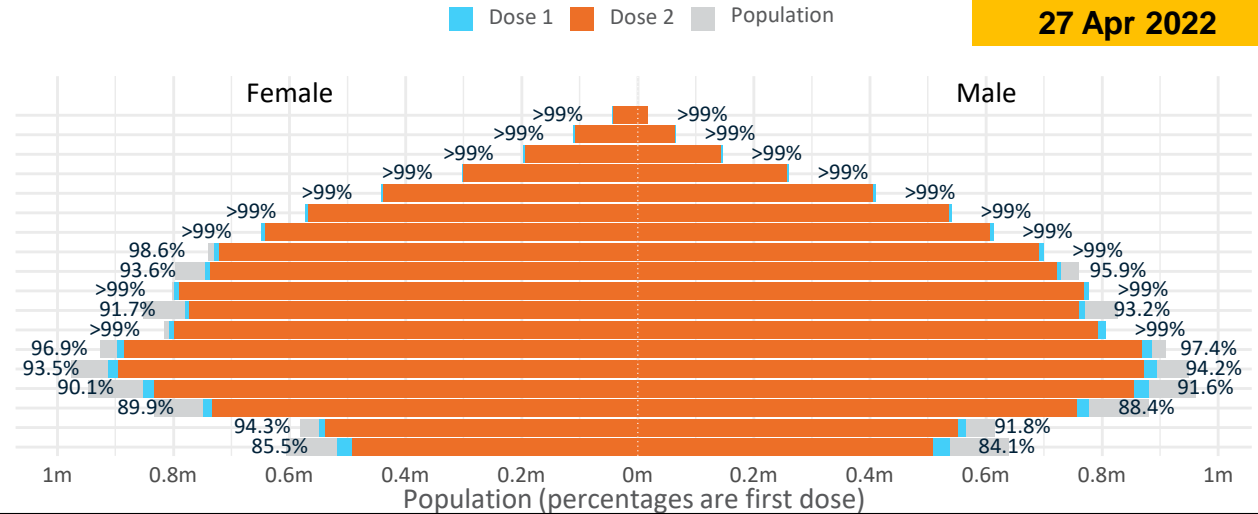
Doses by age and sex

First and second doses by age and sex

	16+	50+	12-15	5-11
Dose 1	97.07% (20,015,529 doses / 20,619,959 people)	>99% (8,858,083 doses / 8,749,703 people)	84.82% (1,055,114 doses / 1,243,990 people)	52.83% (1,202,781 doses / 2,276,638 people)
Dose 2	95.45% (19,681,761 doses / 20,619,959 people)	>99% (8,751,455 doses / 8,749,703 people)	80.39% (999,996 doses / 1,243,990 people)	36.31% (826,739 doses / 2,276,638 people)

Data as at:
27 Apr 2022

Age	Dose 1	Dose 2
95+	61,935 (>99%)	58,550 (>99%)
90-94	177,197 (>99%)	171,548 (>99%)
85-89	343,947 (>99%)	336,914 (>99%)
80-84	563,808 (>99%)	556,494 (>99%)
75-79	851,949 (>99%)	843,536 (>99%)
70-74	1,114,204 (>99%)	1,103,247 (>99%)
65-69	1,263,363 (>99%)	1,249,178 (>99%)
60-64	1,430,054 (>99%)	1,413,894 (98.4%)
55-59	1,475,504 (94.8%)	1,459,030 (93.8%)
50-54	1,576,122 (>99%)	1,559,064 (>99%)
45-49	1,551,718 (92.5%)	1,532,988 (91.4%)
40-44	1,616,416 (>99%)	1,592,172 (98.3%)
35-39	1,787,119 (97.4%)	1,755,018 (95.6%)
30-34	1,813,848 (94.3%)	1,772,306 (92.1%)
25-29	1,742,179 (91.4%)	1,694,935 (88.9%)
20-24	1,533,028 (89.5%)	1,493,792 (87.2%)
16-19	1,113,138 (93.1%)	1,089,095 (91.1%)
12-15	1,055,114 (84.8%)	999,996 (80.4%)



	AUS	ACT	NSW	NT	QLD	SA	TAS	VIC	WA
16 and over - dose 1	20,015,529	352,005	6,315,832	173,913	3,851,524	1,372,178	444,135	5,150,400	2,090,328
16 and over - dose 2	19,681,761	346,505	6,220,260	169,128	3,787,075	1,342,480	434,933	5,074,182	2,058,380
16 and over - population	20,619,959*	344,037	6,565,651	190,571	4,112,707	1,440,400	440,172	5,407,574	2,114,978
16 and over % with dose 1	97.07%	>99%	96.20%	91.26%	93.65%	95.26%	>99%	95.24%	98.83%
16 and over % with dose 2	95.45%	>99%	94.74%	88.75%	92.08%	93.20%	98.81%	93.83%	97.32%
5 to 11 - dose 1	1,202,781	31,968	358,361	13,226	209,402	84,404	28,812	327,169	141,564
5 to 11 - dose 2	826,739	25,849	248,794	7,842	141,041	58,699	22,401	226,855	91,060
5 to 11 - population	2,276,638	39,789	716,460	24,750	478,731	148,816	45,033	578,499	244,154
5 to 11 % with dose 1	52.83%	80.34%	50.02%	53.44%	43.74%	56.72%	63.98%	56.55%	57.98%
5 to 11 % with dose 2	36.31%	64.97%	34.73%	31.68%	29.46%	39.44%	49.74%	39.21%	37.30%
12 to 15 - dose 1	1,055,114	20,123	324,681	10,857	206,980	68,452	22,938	275,593	115,874
12 to 15 - dose 2	999,996	19,572	310,332	9,788	193,997	64,833	21,841	263,948	107,292
12 to 15 - population	1,243,990	19,693	390,330	13,060	270,146	82,747	26,308	308,611	132,869
12 to 15 % with dose 1	84.82%	>99%	83.18%	83.13%	76.62%	82.72%	87.19%	89.30%	87.21%
12 to 15 % with dose 2	80.39%	>99%	79.51%	74.95%	71.81%	78.35%	83.02%	85.53%	80.75%

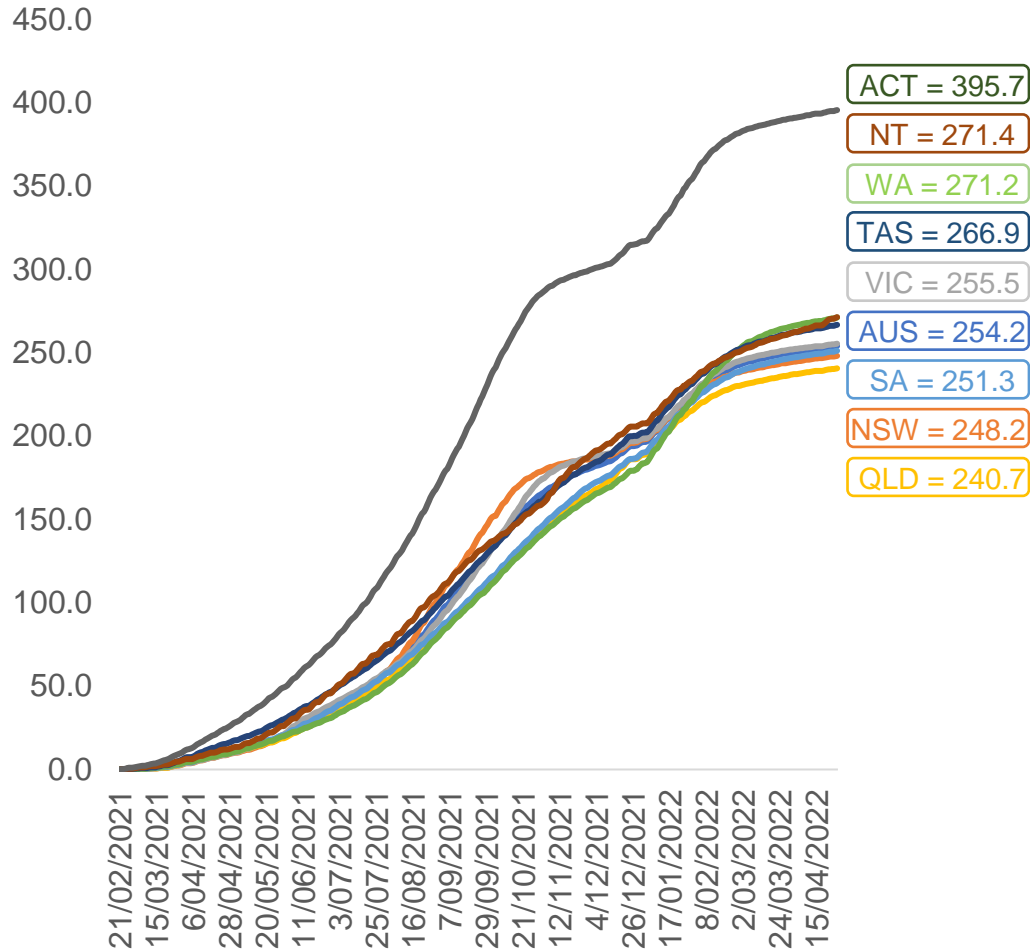
*National population will not equal sum of listed jurisdictions due to a small number of people counted in national population residing in some 'other' territories. Sum of state doses will not add to national total as some records are unable to be geocoded to a State or Territory. Doses sourced from Australian Immunisation Register, population from ABS ERP June 2020

Vaccinations by location

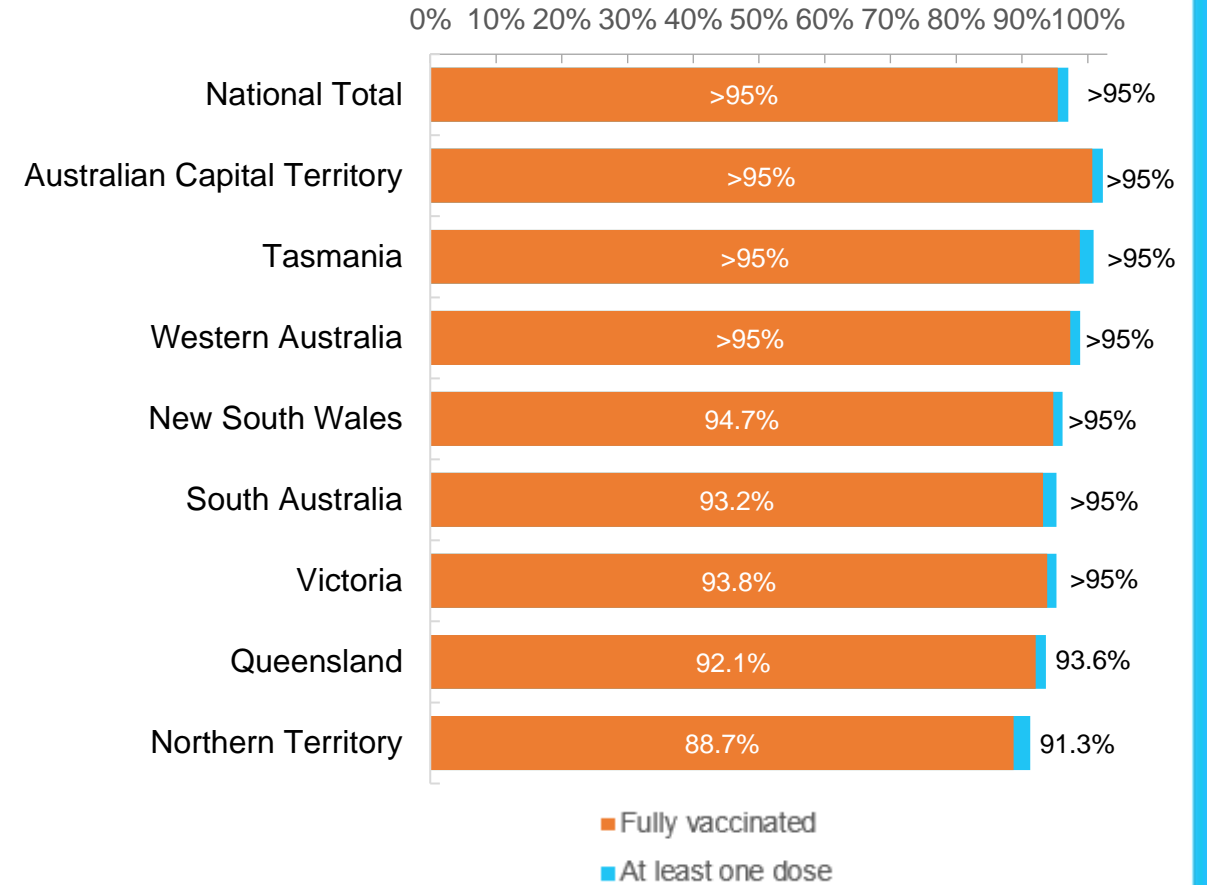
Data as at:
27 Apr 2022

Australia's COVID-19
Vaccine Roadmap

Cumulative total doses administered vs eligible state populations*



First and Second Doses by residential location



*Not an indication of percentage vaccinated, numbers will exceed 100 due to multiple doses required per person of the population. All doses are included for those aged 12 and above, and are based on vaccination provider location.

Aboriginal and Torres Strait Islander peoples

Number of people vaccinated

Data as at:
26 Apr 2022
Updated weekly

Australia's COVID-19
Vaccine Roadmap



438,702

people over the age of 16
have had at least one dose

84.4%

of people over the age of 16
have had at least one dose



419,101

people over the age of 16
are fully vaccinated

80.7%

of people over the age of 16 are
fully vaccinated



People aged 12 – 15 years

48,565

42,691

68.4%

At least one dose

60.1%

Fully vaccinated

178 Aboriginal community controlled health services (ACCHS)

0#	50	27	44	12	3	21	21
ACT	NSW	NT	QLD	SA	TAS	VIC	WA

Medicare Address State ^{##}	Individuals Dose 1	Individuals Dose 1 %	Individuals Dose 2	Individuals Dose 2 %
Australian Capital Territory	4,792	90.9%	4,673	88.7%
New South Wales	134,640	86.7%	131,513	84.7%
Northern Territory	41,630	89.5%	39,417	84.7%
Queensland	115,367	81.3%	109,778	77.4%
South Australia	19,850	80.0%	18,390	74.1%
Tasmania	13,868	88.5%	13,457	85.9%
Victoria	35,361	89.8%	34,565	87.8%
Western Australia	53,497	86.1%	49,322	79.4%
Unknown/Other Territories	19,697	68.5%	17,986	62.6%
Totals	438,702	84.4%	419,101	80.7%

Source: Australian Immunisation Register

*Identifying as Aboriginal and Torres Strait Islander is optional and the estimated population may be under reported.

**Includes all Aboriginal and Torres Strait Islander peoples who have received a vaccination, not limited to those administered in an ACCHS setting

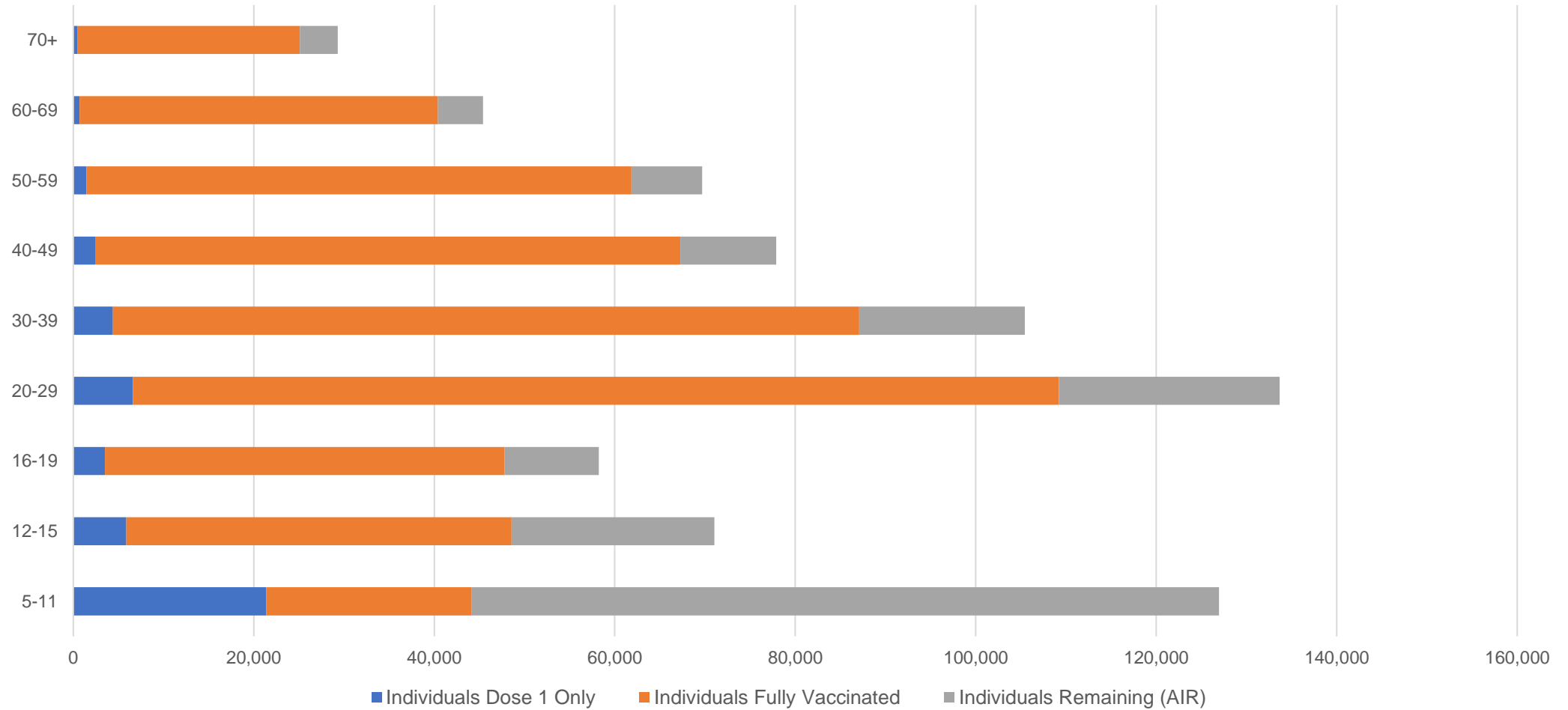
#ACCHS in the ACT are currently operating as a Commonwealth Vaccine Clinics so not included to avoid double counting

##The above table includes all identified Aboriginal and Torres Strait Islander people who are aged 16 and above by their state of residence.

Aboriginal and Torres Strait Islander peoples Number of people vaccinated by age

Data as at:
26 Apr 2022
Updated weekly

Australia's COVID-19
Vaccine Roadmap



Source: Australian Immunisation Register

Commonwealth primary care

Data as at:
27 Apr 2022

Australia's COVID-19
Vaccine Roadmap



Primary care vaccine administration sites

5,797	128	178	3,598
GPs	CVCs	ACCHS	Pharmacies



35,334,184 total vaccine doses administered
primary care settings as at 27 April
+ 51,691 recorded in the last 24 hours

Primary care vaccinations by provider type

	Doses administered	Daily increase	7 day increase
General Practice* includes other Commonwealth	28,443,740	36,924	164,196
Pharmacy	6,890,444	14,767	74,696

NSW
12,218,519
(+16,163 daily increase)

VIC
8,788,337
(+11,555 daily increase)

QLD
6,792,200
(+10,834 daily increase)

WA
3,708,030
(+5,830 daily increase)

TAS
657,511
(+1,711 daily increase)

SA
2,094,079
(+3,564 daily increase)

ACT
556,379
(+1,052 daily increase)

NT
212,599
(+286 daily increase)

306,530

doses administered to persons residing in other territories or with missing residential information

*General practice includes Commonwealth Vaccination Clinics, Aboriginal Community Health Centres, Royal Flying Doctor Service and other Commonwealth vaccination facilities

Source: Australian Immunisation Register

Data as at:
27 Apr 2022

Commonwealth aged care and disability doses administered



1,273,667 (+ 273 last 24 hours)

Total vaccine doses administered in aged care and disability facilities as at 27 April

Number of doses administered as part of the Commonwealth aged and disability care rollout

NSW
559,559
(+26 daily increase)

VIC
235,683
(+107 daily increase)

QLD
202,905
(+37 daily increase)

WA
107,957
(+58 daily increase)

TAS
22,828
(<10 daily increase)

SA
83,905
(+23 daily increase)

ACT
17,047
(<10 daily increase)

NT
7,526
(<10 daily increase)

36,257

doses administered to persons residing in other territories or with missing residential information

*Sourced from the Australian Immunisation Register. Includes all persons vaccinated at participating residential aged care, disability and related industry settings.

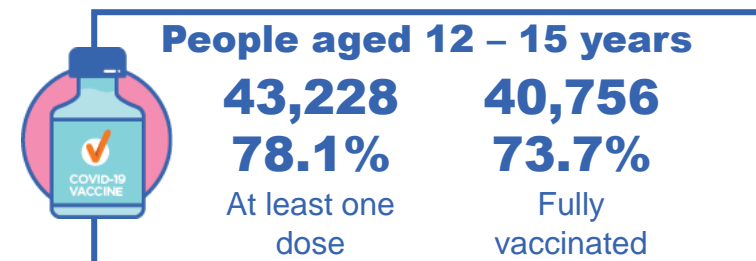
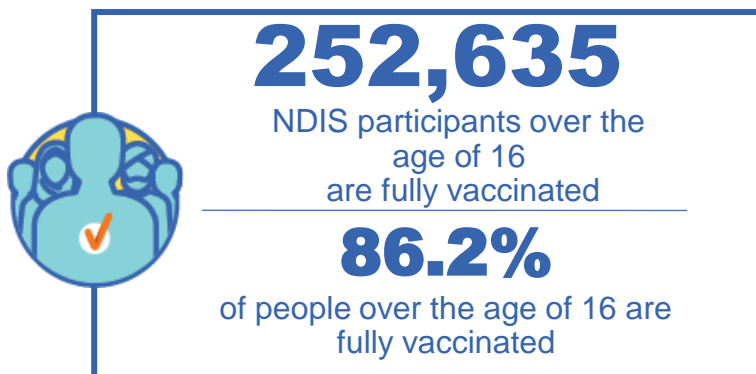
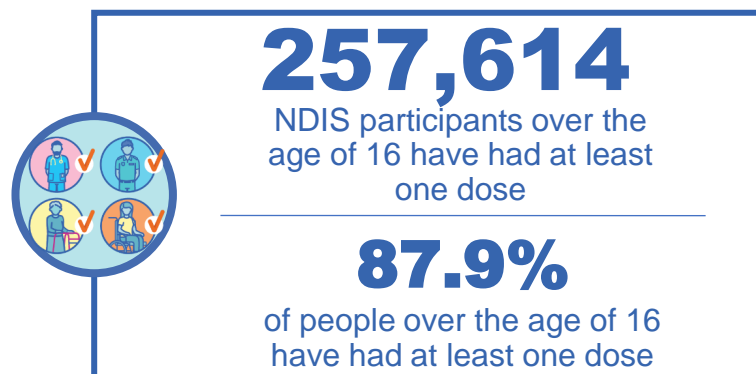
**State level breakdown indicates the residential location and may not align to the state in which the vaccination occurred.

Source: Australian Immunisation Register

National Disability Insurance Scheme (NDIS) reported vaccinations

Data as at:
21 April 2022
Updated weekly

Australia's COVID-19
Vaccine Roadmap



NDIS participant vaccinations

	People aged 16+ with at least one dose	People aged 16+ fully vaccinated	% People aged 16+ with at least one dose	% People aged 16+ fully vaccinated
ACT	4,869	4,802	89.8%	88.5%
NSW	79,128	77,823	88.2%	86.7%
NT	2,228	2,156	78.1%	75.6%
QLD	50,784	49,770	86.3%	84.6%
SA	21,021	20,483	85.7%	83.5%
TAS	6,451	6,290	87.8%	85.6%
VIC	68,562	67,330	89.0%	87.4%
WA	24,571	23,981	89.3%	87.1%
National	257,614	252,635	87.9%	86.2%

Source: Linkage between National Disability Insurance Agency data and the Australian Immunisation Register. Total NDIS participant numbers as at 28 February. Australian Immunisation Register data as at 20 April. Includes all participants regardless of residence type.

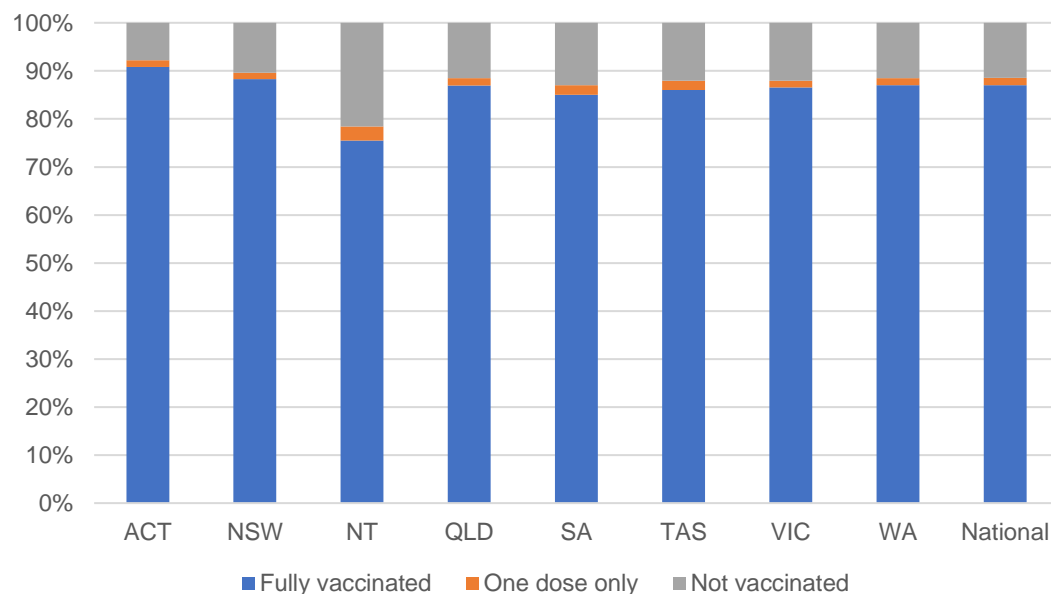
National Disability Insurance Scheme (NDIS) reported vaccinations

Data as at:
21 April 2022
Updated Weekly

Australia's COVID-19
Vaccine Roadmap

NATIONAL	Total people with at least one dose	People fully vaccinated	Total number of individuals in cohort	% People with at least one dose	% People fully vaccinated
NDIS participants living in disability accommodation	20,728	20,385	23,352	88.8%	87.3%

NDIS participants in disability and aged care accommodation



Source: Linkage between National Disability Insurance Agency data and the Australian Immunisation Register. Includes participants residing in disability accommodation only.
Source: Total NDIS participant numbers as at 28 February. Participant data as at 20 April. Australian Immunisation Register data as at 20 April. Worker data as at 20 April.

NDIS workforce vaccinations

	NDIS workers with at least one dose	NDIS workers fully vaccinated	% NDIS workers with at least one dose	% NDIS workers fully vaccinated
NSW	121,789	117,641	98.3%	94.9%
VIC	116,587	112,526	98.3%	94.9%
QLD	69,618	68,740	97.6%	96.4%
WA	32,967	31,161	98.6%	93.2%
SA	35,627	32,670	98.4%	90.2%
TAS	10,701	10,429	99.7%	97.2%
ACT	3,506	3,462	98.3%	97.1%
NT	3,445	3,284	99.4%	94.8%
TOTAL	394,240	379,913	98.3%	94.7%

Source: the NDIS Commission has established a requirement for registered NDIS providers who provide intensive disability support services to report on the vaccination status of workers they employ, or otherwise engage, to deliver NDIS-funded supports and services, and who are required to be vaccinated in accordance with in-force state and territory public health orders. The statistics reflect data reported to the NDIS Commission by registered NDIS providers and should be considered indicative and subject to change

Note: Some registered NDIS providers are yet to report on the vaccination status of their workforce. The NDIS Commission is working with those providers around reporting requirements.

Remaining workers not included include those exempt from vaccination requirements, workers whose vaccination status is not yet verified by the provider (such as workers on leave) and provider reporting anomalies.

Residential aged care vaccination rollout

Residential aged care facilities status

171,753 **173,554**

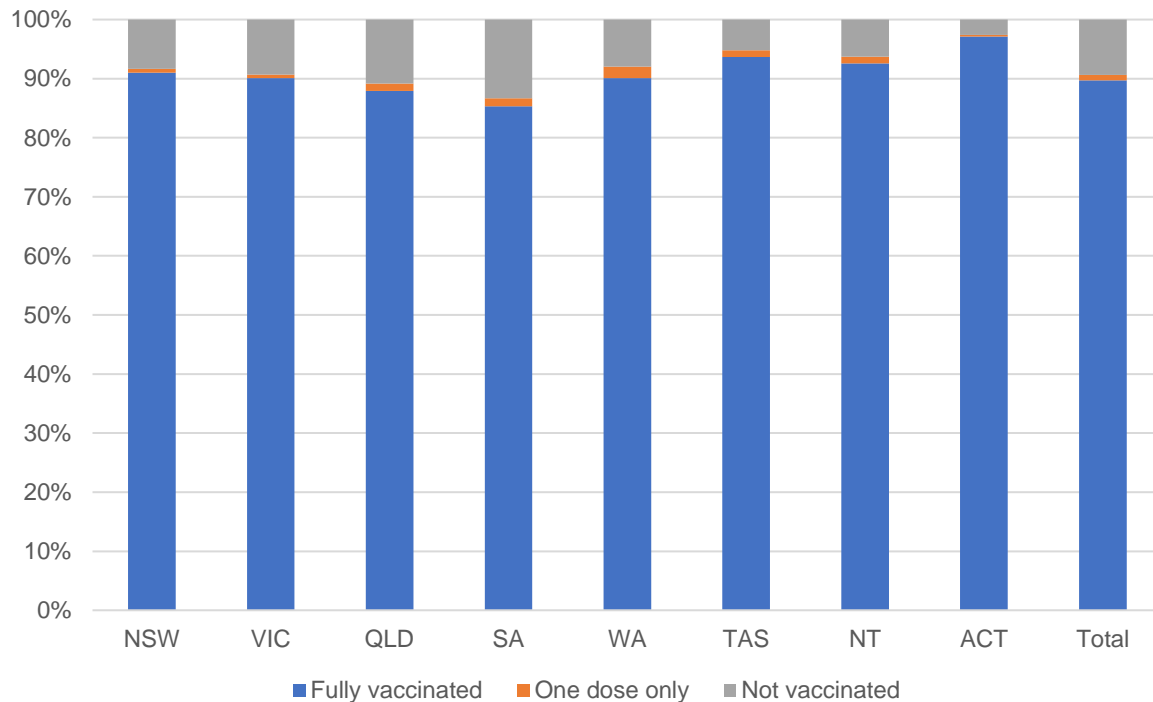
People fully vaccinated

People with at least one dose

Australia's COVID-19 Vaccine Roadmap

Data as at:
21 Apr 2022
Updated weekly

Aged care resident vaccinations



Aged care worker vaccinations

Jurisdictions	Total workers with at least one dose	Workers fully vaccinated	% Workers with at least one dose	% Workers fully vaccinated
NSW	75,435	75,430	96.7%	96.7%
VIC	65,033	65,029	91.5%	91.5%
QLD	46,146	46,140	95.7%	95.7%
SA	26,415	26,398	96.8%	96.8%
WA	24,070	24,068	99.4%	99.4%
TAS	7,561	7,559	100.0%	100.0%
NT	881	881	100.0%	100.0%
ACT	2,976	2,976	100.0%	100.0%
Total	248,517	248,481	95.5%	95.5%

Source: My Aged Care Portal vaccination progress

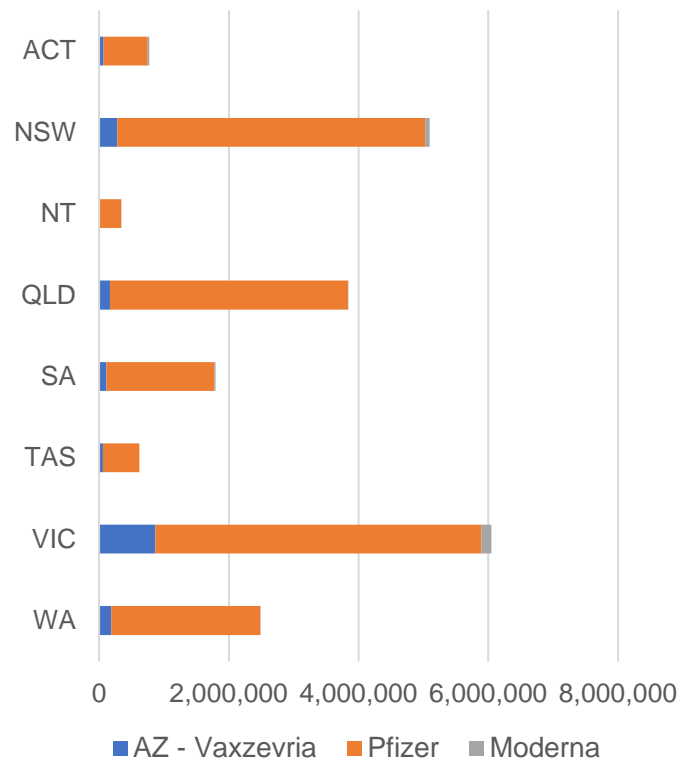
*Status updates are provided by facilities at least once per week. Reporting is updated Monday to Friday to encompass different facility updates being made on different days.

Data is sourced directly from Aged Care Service Providers and is not drawn or closely aligned with data from AIR due to inconsistencies and potential lags in uploading of records.

Data as at:
27 Apr 2022

Jurisdiction administered

Total vaccine doses administered in State and Territory clinics as at 27 April



21,001,637 total vaccine doses administered in State and Territory clinics as at 27 April
 + **8,562** recorded in the last 24 hours
 + **57,680** recorded in the last 7 days

NSW
5,096,307
 (+1,058 daily increase)

VIC
6,052,104
 (+2,518 daily increase)

QLD
3,835,579
 (+710 daily increase)

WA
2,486,595
 (+1,372 daily increase)

TAS
619,151
 (+219 daily increase)

SA
1,797,542
 (+1,341 daily increase)

ACT
775,365
 (+901 daily increase)

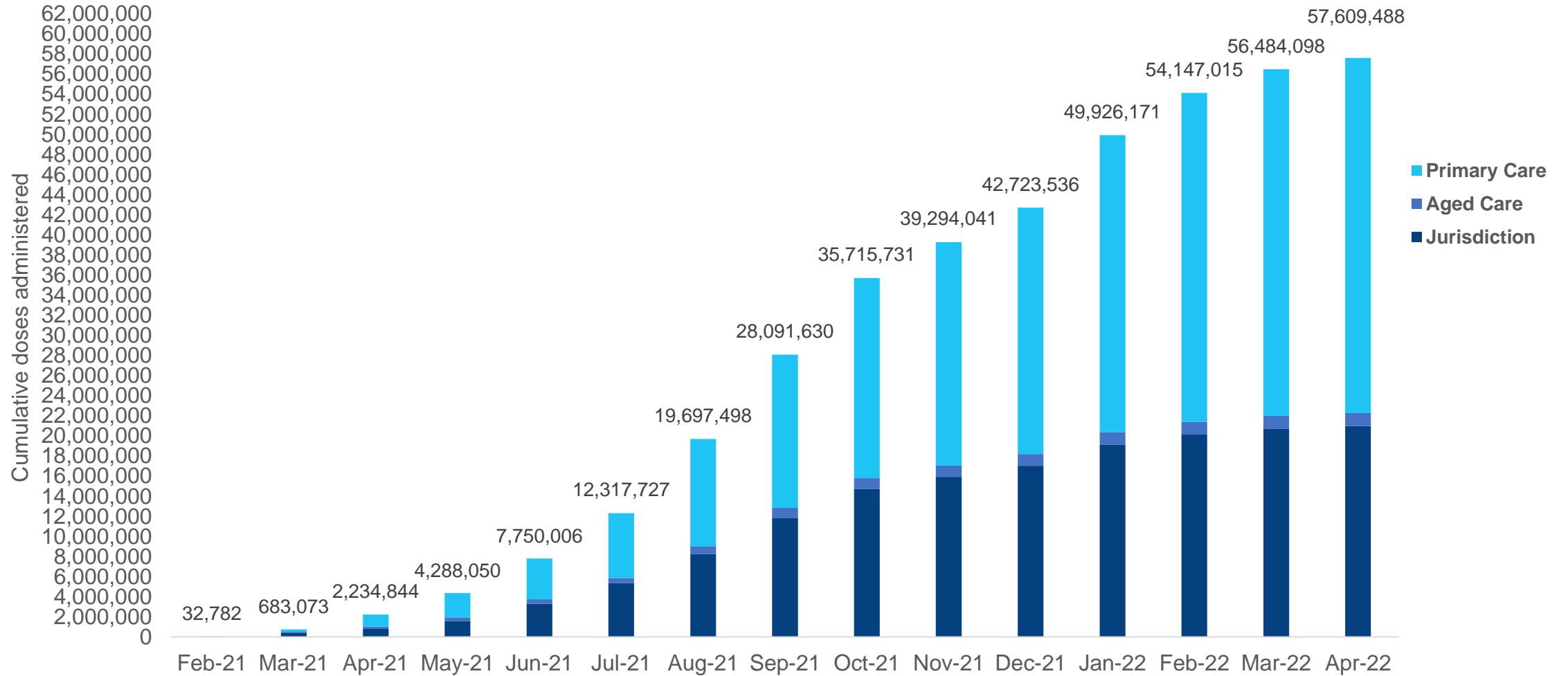
NT
338,994
 (+443 daily increase)

*Sourced from the Australian Immunisation Register. Numbers are calculated as difference in daily cumulative reported numbers to allow for historical corrections.

Source: Australian Immunisation Register

Data as at:
27 Apr 2022

Cumulative doses administered by channel



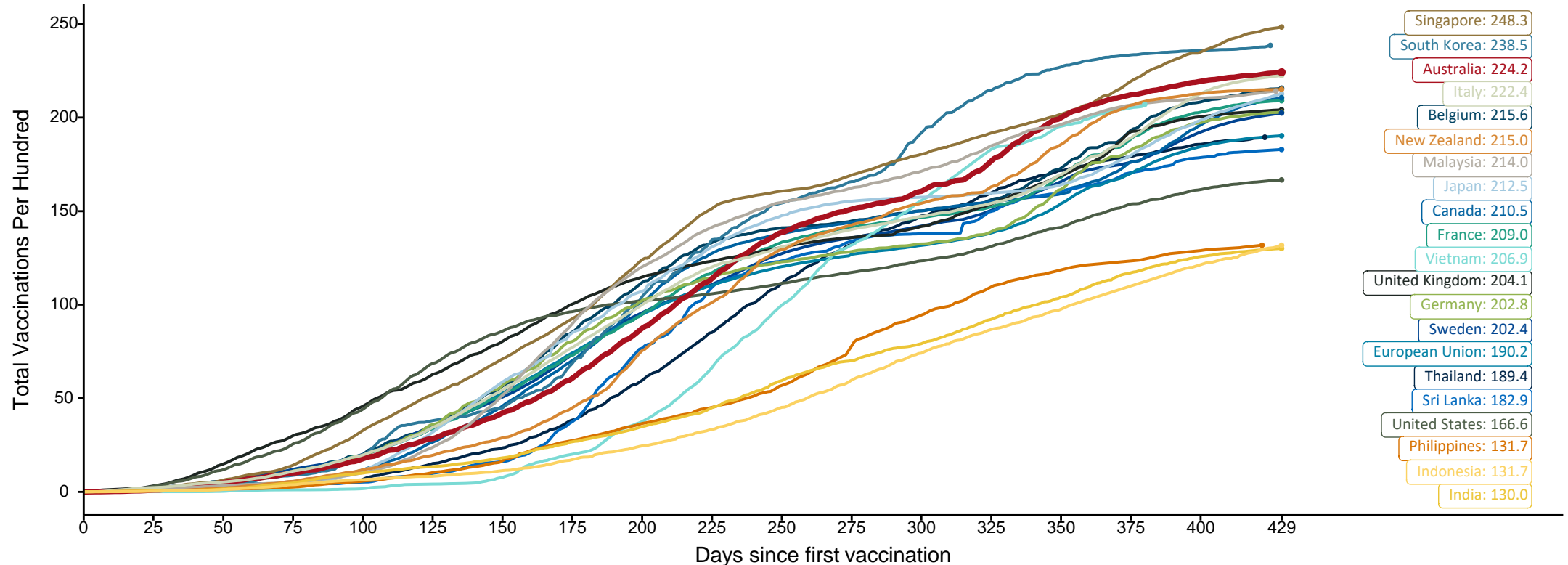
Source: Australian Immunisation Register

Doses at equivalent stages of rollout (Day 429)

Data as at:
27 Apr 2022

The x-axis is truncated at the length of Australia's vaccination program. Countries with intermittent reporting have had their doses per 100 imputed to Australia's current stage of rollout. Israel excluded as it is beyond scale of the graph

Cumulative doses administered (27 Apr): **57,609,488**

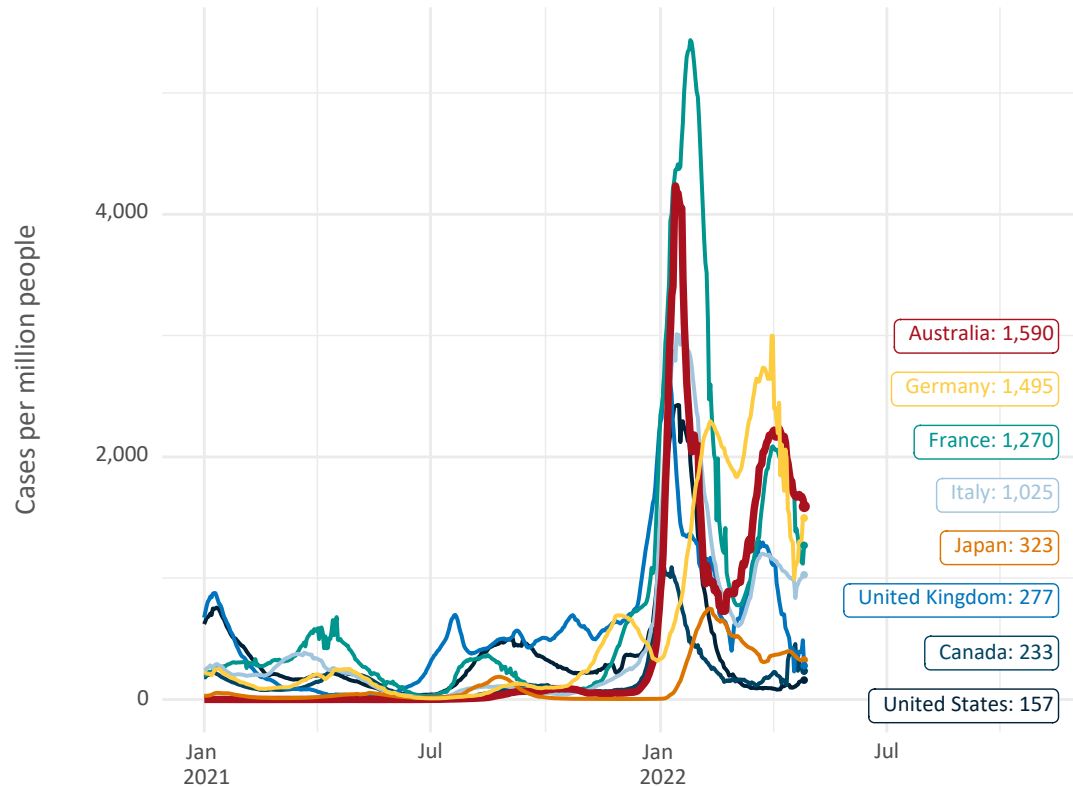


Note: From 11 January 2022, data for Australia includes all doses administered to people 5 and over. Prior to 11 January, data was for 12 and over.
Source: Department of Health (Australia), Our World in Data (international)
Latest data: 27 April

Data as at:
27 Apr 2022

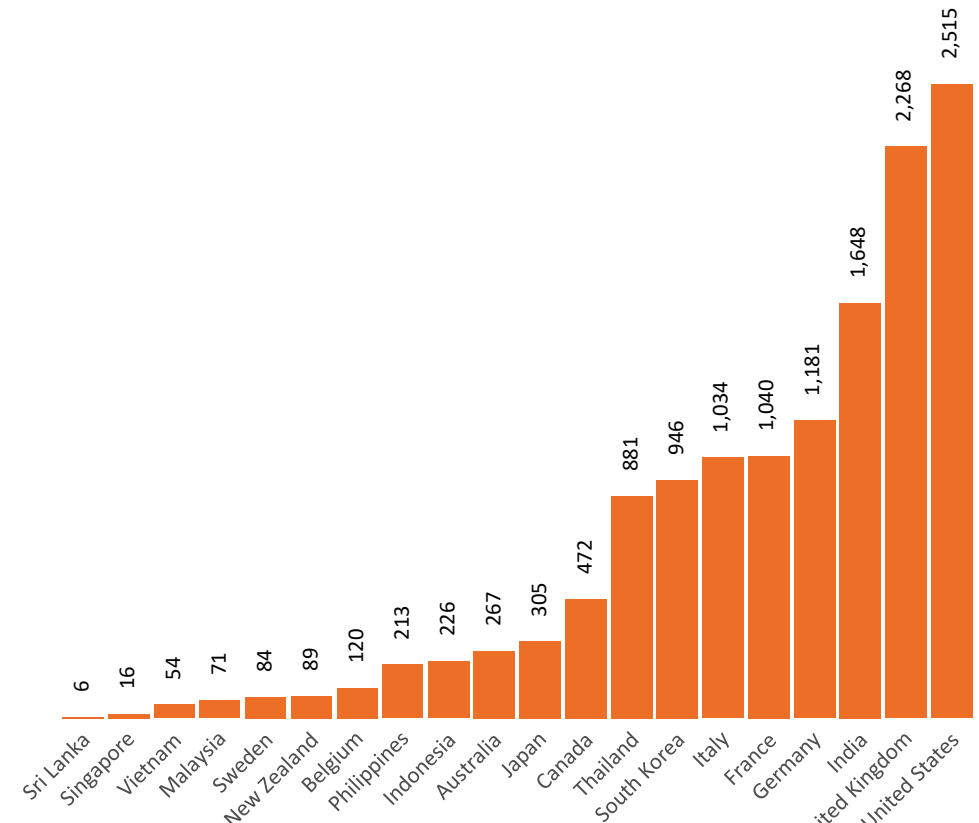
International data – COVID-19

New daily cases per million in 2021, Australia and G7 countries
Smoothed - 7 day average



Source: OWID
Data downloaded: 28 Apr 2022 09:33
Latest data: 26 Apr 2022

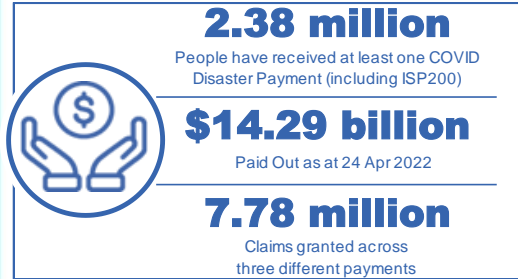
COVID-19 deaths in past 7 days - Australia and select countries



Source: OWID
Data downloaded: 28 Apr 2022 09:34
Latest data: 26 Apr 2022

Pandemic Response Payments

Data as at midnight: 24 Apr 2022
Updated weekly



COVID Disaster Payment:	5.89 million claims received - 2.19 million individuals paid a total of \$12.59 billion.
\$200 Income Support Payment:	353,000 claims received - 183,000 individuals paid a total of \$268.9 million.
Pandemic Leave Disaster Payment:	2.03 million claims received - 1.24 million individuals paid a total of \$1.42 billion.



COVID Disaster Payment

assisting during a lockdown event in a Commonwealth hotspot.

Income Support Payment \$200

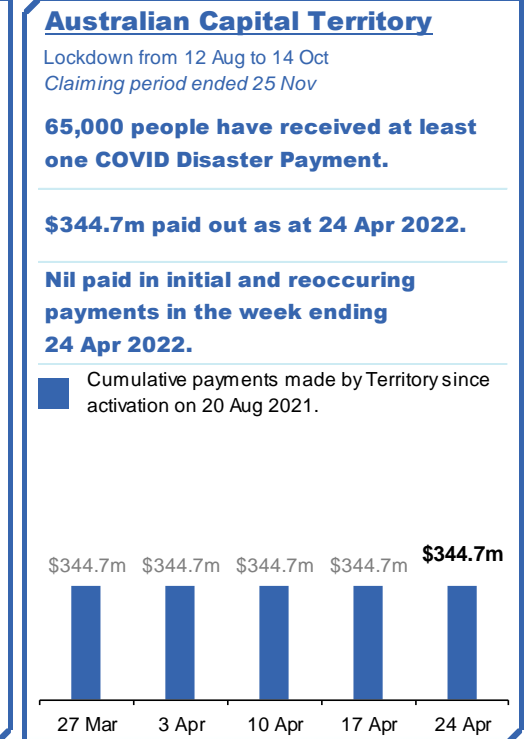
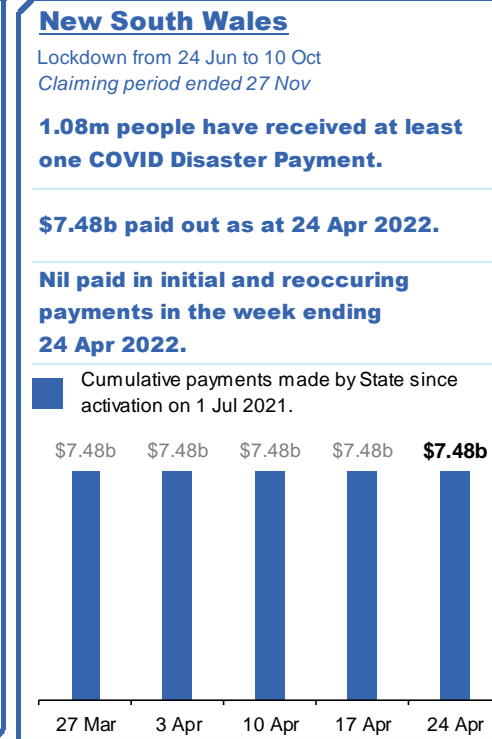
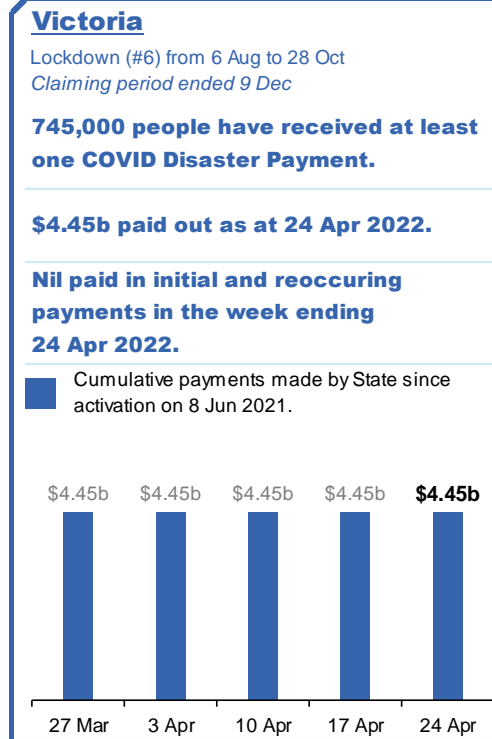
for income support recipients who lost at least 8 hours of work.

Pandemic Leave Disaster Payment

for those who have to self-isolate, quarantine or care.

For more information visit: servicesaustralia.gov.au

COVID-19 DISASTER PAYMENTS



Pandemic Response Payments (continued)

Data as at midnight: 24 Apr 2022
Updated weekly

COVID-19 DISASTER PAYMENTS

Tasmania

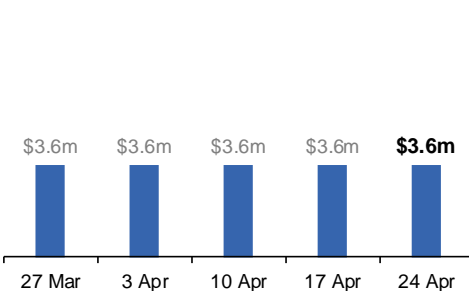
Lockdown from 15 Oct to 18 Oct
Claiming period ended 12 Nov

6,900 people have received at least one COVID Disaster Payment.

\$3.6m paid out as at 24 Apr 2022.

Nil paid in initial and reoccurring payments in the week ending 24 Apr 2022.

Cumulative payments made by State since activation on 22 Oct 2021.



Queensland

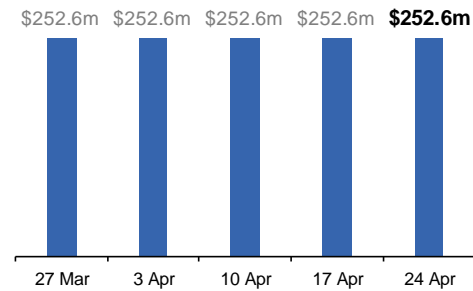
Lockdown from 31 Jul to 11 Aug
Claiming period ended 28 Aug

196,000 people have received at least one COVID Disaster Payment.

\$252.6m paid out as at 24 Apr 2022.

Nil paid in initial and reoccurring payments in the week ending 24 Apr 2022.

Cumulative payments made by State since activation on 7 Aug 2021.



South Australia

Lockdown from 21 to 27 Jul
Claiming period ended 17 Aug

86,000 people have received at least one COVID Disaster Payment.

\$48.2m paid out as at 24 Apr 2022.

Nil paid in initial and reoccurring payments in the week ending 24 Apr 2022.

Cumulative payments made by State since activation on 28 Jul 2021.

