



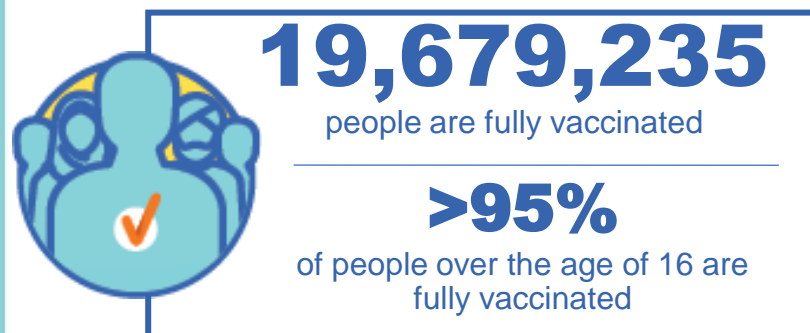
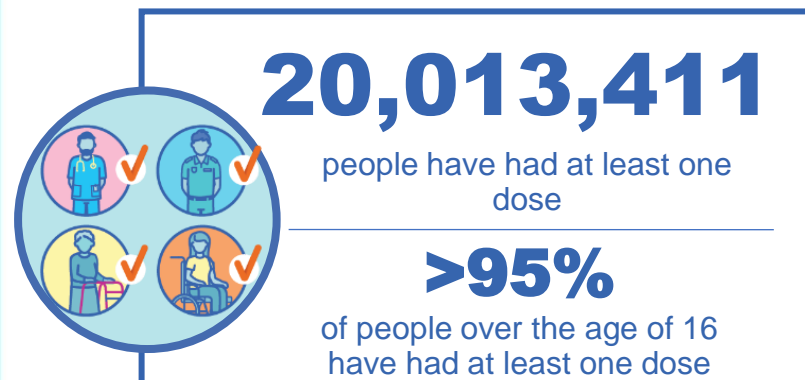
Australian Government
Operation COVID Shield

COVID-19 Vaccine Roll-out

27 April 2022

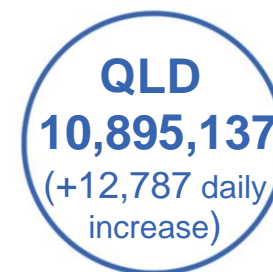
Data as at:
26 Apr 2022

Total vaccine doses



57,548,962 total vaccine
doses administered nationally as at 26 April

+64,448 recorded in the last 24 hours



*Administration state breakdown indicates state in which a vaccine was administered

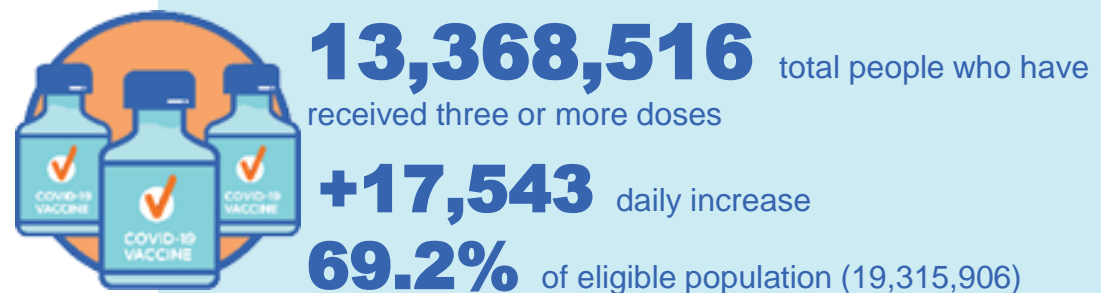
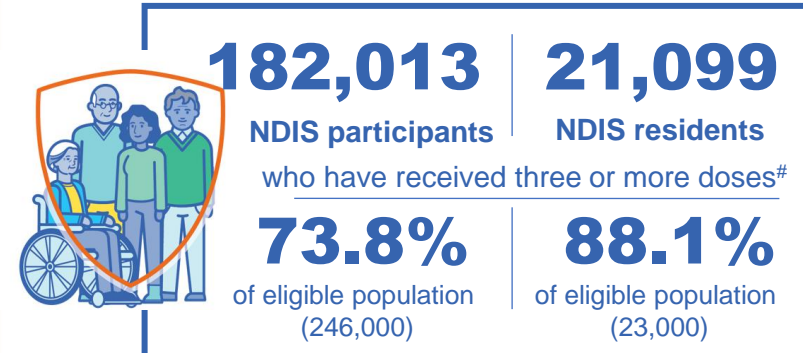
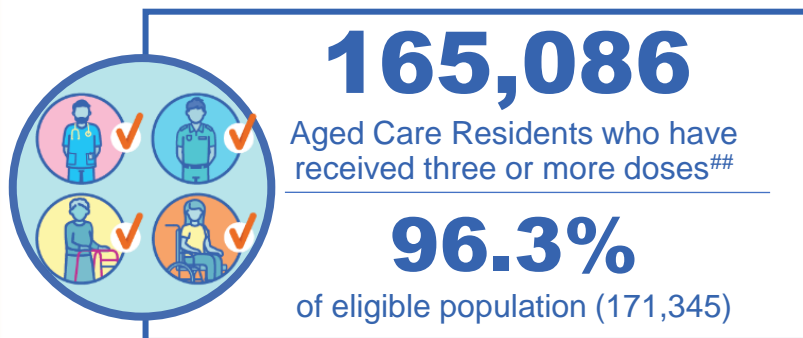
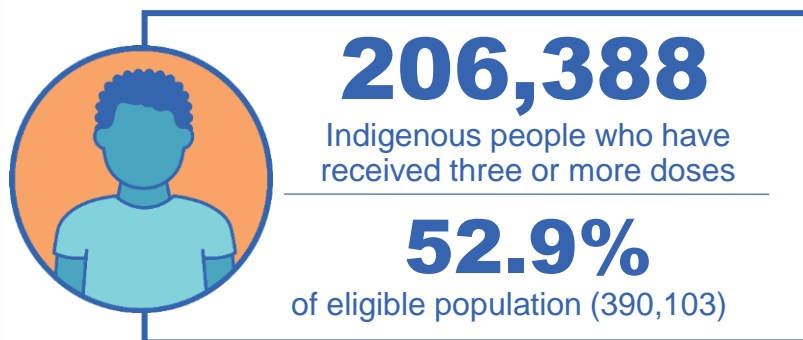
**Overall dose count includes instances of more than three doses per person in a small number of cases.

Source: Australian Immunisation Register

Booster Vaccinations

Australia's COVID-19
Vaccine Roadmap

Data as at:
26 Apr 2022



	Number of People	Daily Increase	% of Eligible
NSW	4,086,769	4,503	66.1%
VIC	3,583,670	3,374	71.1%
QLD	2,314,714	2,987	62.6%
WA	1,630,585	3,727	85.2%
SA	946,363	1,201	72.4%
TAS	304,853	498	71.9%
ACT	265,401	183	77.0%
NT	123,783	776	75.2%

*People may belong to multiple groups and could be represented in the above breakdowns multiple times.
NDIS participants data as at 25 April 2022. ## Aged Care Residents data as at 26 April 2022.

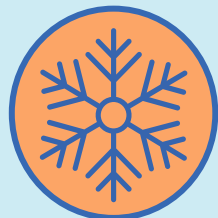
Source: Australian Immunisation Register

112,378 doses administered to persons
residing in other territories or with
missing residential information

Winter / Fourth Doses

Data as at:
24 Apr 2022
Updated weekly

Australia's COVID-19
Vaccine Roadmap



345,829 total people (16+) who have received four or more doses

+132,575 weekly increase

	Number of People 16+	Weekly Increase
ACT	9,937	3,277
NSW	121,436	42,222
NT	2,317	614
QLD	65,478	28,271
SA	23,570	10,163
TAS	9,213	3,796
VIC	85,891	32,737
WA	26,277	10,939

1,710 doses administered to persons
residing in other territories or with
missing residential information

Source: Australian Immunisation Register

Vaccinations by residential location

Australia's COVID-19 Vaccine Roadmap

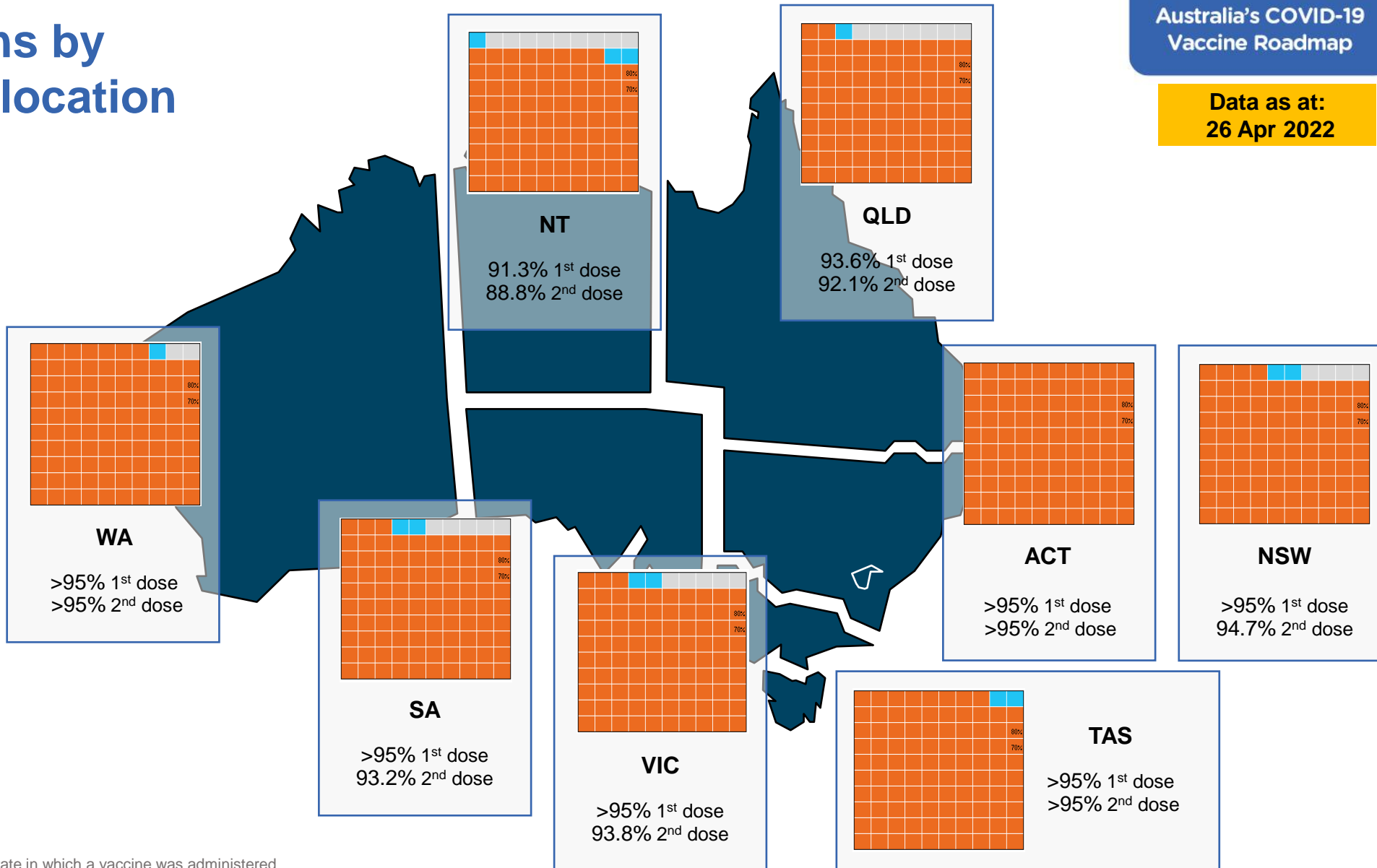
Data as at:
26 Apr 2022

First doses

Age	Today	4 weeks ago	8 weeks ago
16+	>95%	>95%	>95%
50+	>95%	>95%	>95%
70+	>95%	>95%	>95%

Fully vaccinated

Age	Today	4 weeks ago	8 weeks ago
16+	>95%	>95%	94.8%
50+	>95%	>95%	>95%
70+	>95%	>95%	>95%



*Residential state may differ from the state in which a vaccine was administered

Commonwealth and Jurisdiction vaccine doses administered

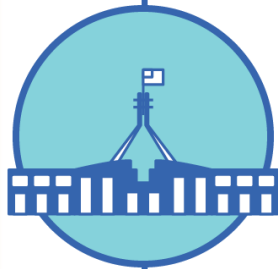
Data as at:
26 Apr 2022



57,548,962 total vaccine
doses administered nationally as at 26 April
+ 64,448 recorded in the last 24 hours



20,993,075
doses administered by state
and territory facilities
+ 9,460
recorded in the last 24 hours



36,555,887
doses administered by
commonwealth facilities
+ 54,988
recorded in the last 24 hours

35,282,493 total vaccine doses
administered in primary care settings
1,273,394 total vaccine doses
administered in aged care and disability
settings

NSW	Jurisdictions	Commonwealth
Cumulative	5,095,249	12,759,445
Daily increase	1,235	17,558

VIC	Jurisdictions	Commonwealth
Cumulative	6,049,586	9,092,468
Daily increase	2,799	12,116

QLD	Jurisdictions	Commonwealth
Cumulative	3,834,869	7,060,268
Daily increase	627	12,160

WA	Jurisdictions	Commonwealth
Cumulative	2,485,223	3,837,038
Daily increase	1,808	6,586

TAS	Jurisdictions	Commonwealth
Cumulative	618,932	676,589
Daily increase	347	1,263

SA	Jurisdictions	Commonwealth
Cumulative	1,796,201	2,169,848
Daily increase	1,041	3,637

ACT	Jurisdictions	Commonwealth
Cumulative	774,464	724,712
Daily increase	815	1,197

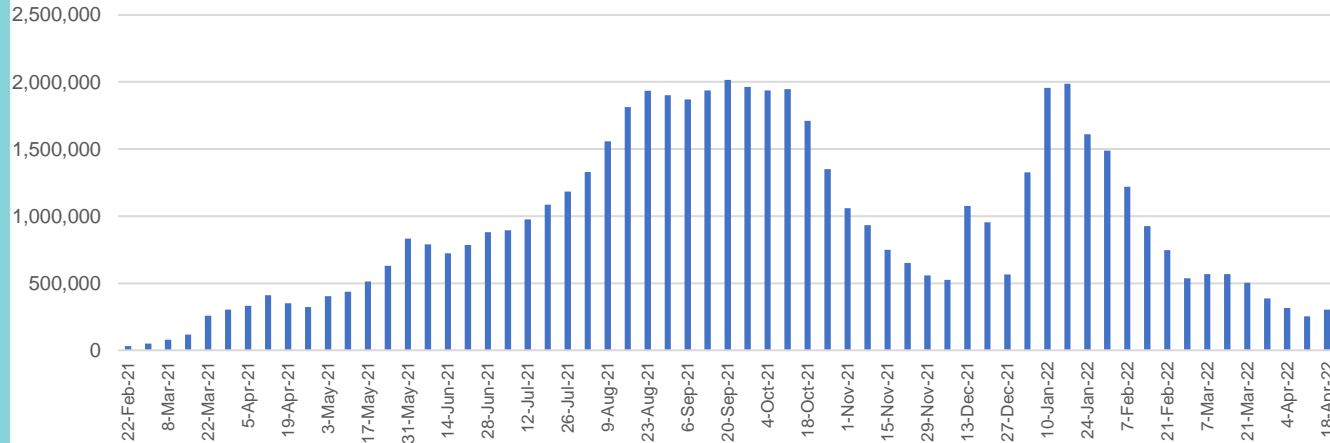
NT	Jurisdictions	Commonwealth
Cumulative	338,551	235,519
Daily increase	788	471

Vaccine milestone charts

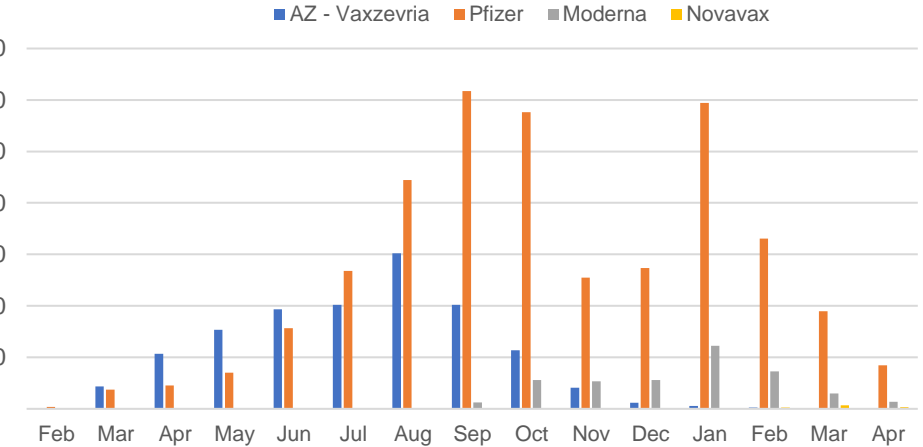
Data as at:
26 Apr 2022

Australia's COVID-19
Vaccine Roadmap

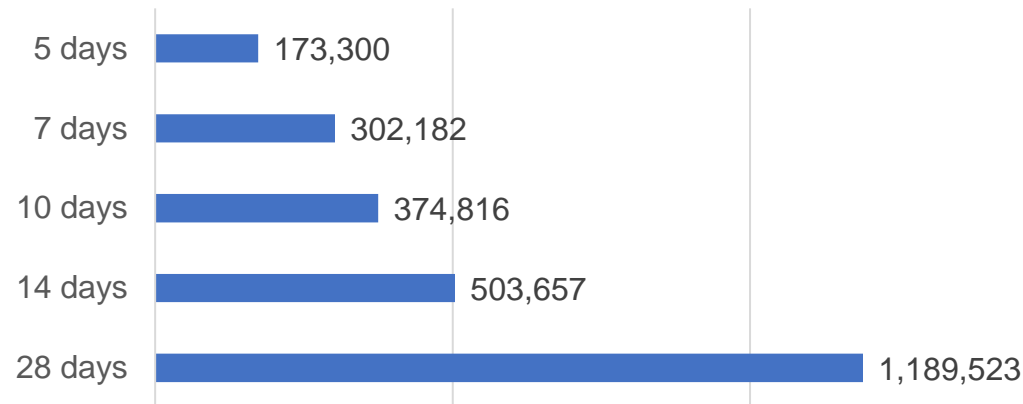
Doses Administered by Week



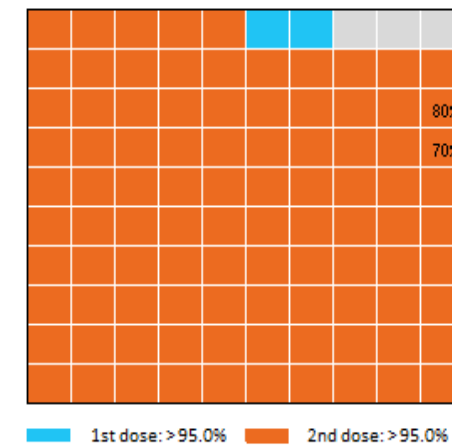
Doses by administration month and vaccine type



Doses Reported



Eligible population percentage coverage



*Each square represents 1% of the national population.
Squares are filled as milestones are achieved.

*Sourced from the Australian Immunisation Register.

Doses by age and sex

First and second doses by age and sex

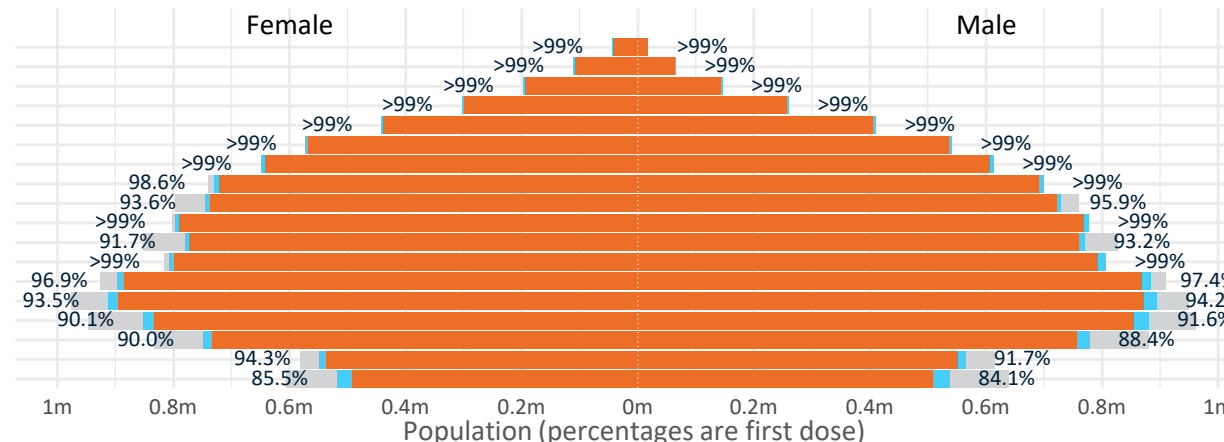
Australia's COVID-19
Vaccine Roadmap

Data as at:
26 Apr 2022

Age	Dose 1	Dose 2
95+	61,888 (>99%)	58,502 (>99%)
90-94	177,119 (>99%)	171,463 (>99%)
85-89	343,810 (>99%)	336,784 (>99%)
80-84	563,642 (>99%)	556,301 (>99%)
75-79	851,705 (>99%)	843,278 (>99%)
70-74	1,114,156 (>99%)	1,103,212 (>99%)
65-69	1,263,245 (>99%)	1,249,048 (>99%)
60-64	1,429,826 (>99%)	1,413,673 (98.4%)
55-59	1,475,392 (94.8%)	1,458,894 (93.8%)
50-54	1,575,906 (>99%)	1,558,820 (>99%)
45-49	1,551,722 (92.5%)	1,532,956 (91.4%)
40-44	1,616,292 (>99%)	1,591,985 (98.3%)
35-39	1,786,942 (97.4%)	1,754,793 (95.6%)
30-34	1,813,731 (94.3%)	1,772,122 (92.1%)
25-29	1,742,122 (91.4%)	1,694,847 (88.9%)
20-24	1,533,174 (89.5%)	1,493,899 (87.2%)
16-19	1,112,739 (93.1%)	1,088,658 (91.0%)
12-15	1,055,196 (84.8%)	999,972 (80.4%)

	16+	50+	12-15	5-11
Dose 1	97.06% (20,013,411 doses / 20,619,959 people)	>99% (8,856,689 doses / 8,749,703 people)	84.82% (1,055,196 doses / 1,243,990 people)	52.83% (1,202,814 doses / 2,276,638 people)
Dose 2	95.44% (19,679,235 doses / 20,619,959 people)	>99% (8,749,975 doses / 8,749,703 people)	80.38% (999,972 doses / 1,243,990 people)	36.15% (822,946 doses / 2,276,638 people)

Dose 1 Dose 2 Population

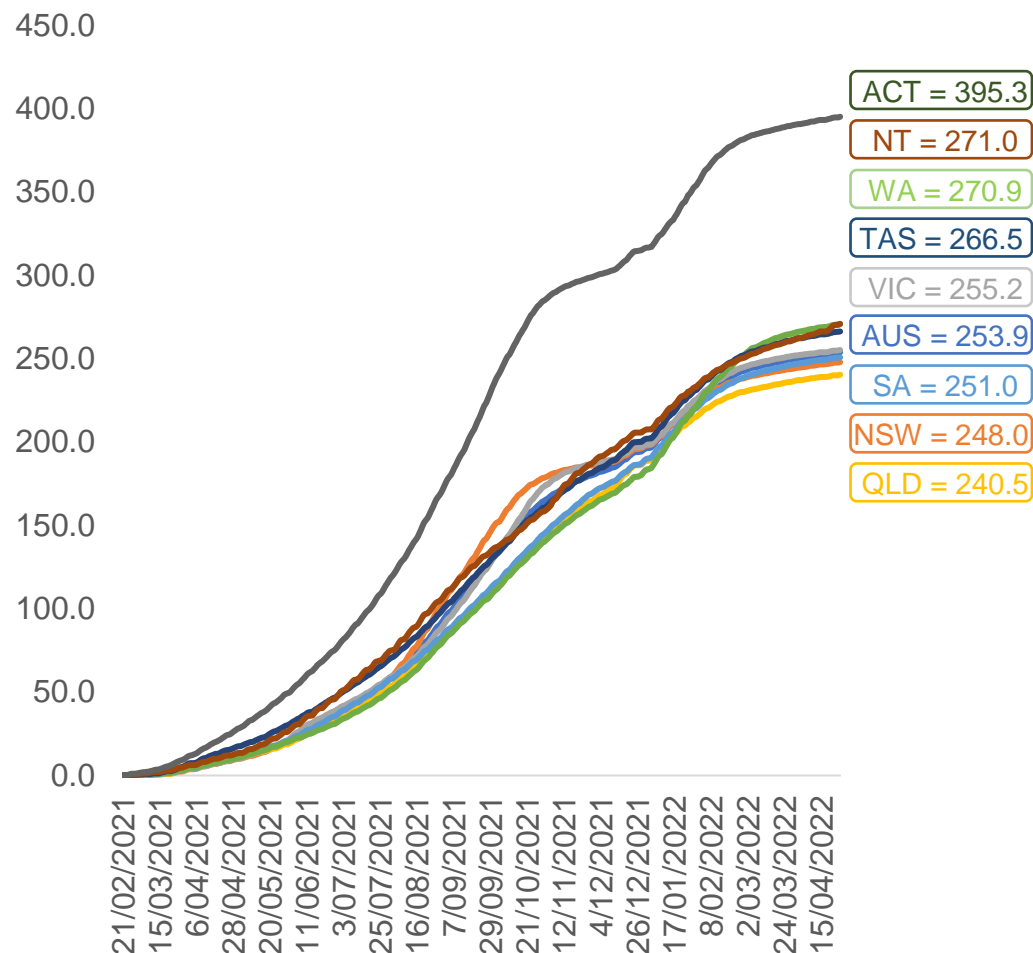


	AUS	ACT	NSW	NT	QLD	SA	TAS	VIC	WA
16 and over - dose 1	20,013,411	352,014	6,315,289	173,938	3,851,044	1,372,021	444,030	5,150,087	2,089,987
16 and over - dose 2	19,679,235	346,517	6,219,699	169,138	3,786,467	1,342,258	434,829	5,073,854	2,057,900
16 and over - population	20,619,959*	344,037	6,565,651	190,571	4,112,707	1,440,400	440,172	5,407,574	2,114,978
16 and over % with dose 1	97.06%	>99%	96.19%	91.27%	93.64%	95.25%	>99%	95.24%	98.82%
16 and over % with dose 2	95.44%	>99%	94.73%	88.75%	92.07%	93.19%	98.79%	93.83%	97.30%
5 to 11 - dose 1	1,202,814	31,969	358,397	13,224	209,446	84,374	28,815	327,171	141,546
5 to 11 - dose 2	822,946	25,568	247,719	7,804	140,607	58,388	22,351	225,877	90,461
5 to 11 - population	2,276,638	39,789	716,460	24,750	478,731	148,816	45,033	578,499	244,154
5 to 11 % with dose 1	52.83%	80.35%	50.02%	53.43%	43.75%	56.70%	63.99%	56.56%	57.97%
5 to 11 % with dose 2	36.15%	64.26%	34.58%	31.53%	29.37%	39.24%	49.63%	39.05%	37.05%
12 to 15 - dose 1	1,055,196	20,127	324,716	10,856	206,999	68,445	22,942	275,618	115,868
12 to 15 - dose 2	999,972	19,576	310,333	9,782	194,011	64,820	21,832	263,974	107,242
12 to 15 - population	1,243,990	19,693	390,330	13,060	270,146	82,747	26,308	308,611	132,869
12 to 15 % with dose 1	84.82%	>99%	83.19%	83.12%	76.62%	82.72%	87.21%	89.31%	87.20%
12 to 15 % with dose 2	80.38%	>99%	79.51%	74.90%	71.82%	78.34%	82.99%	85.54%	80.71%

*National population will not equal sum of listed jurisdictions due to a small number of people counted in national population residing in some 'other' territories. Sum of state doses will not add to national total as some records are unable to be geocoded to a State or Territory.
Doses sourced from Australian Immunisation Register, population from ABS ERP June 2020

Vaccinations by location

Cumulative total doses administered vs eligible state populations*

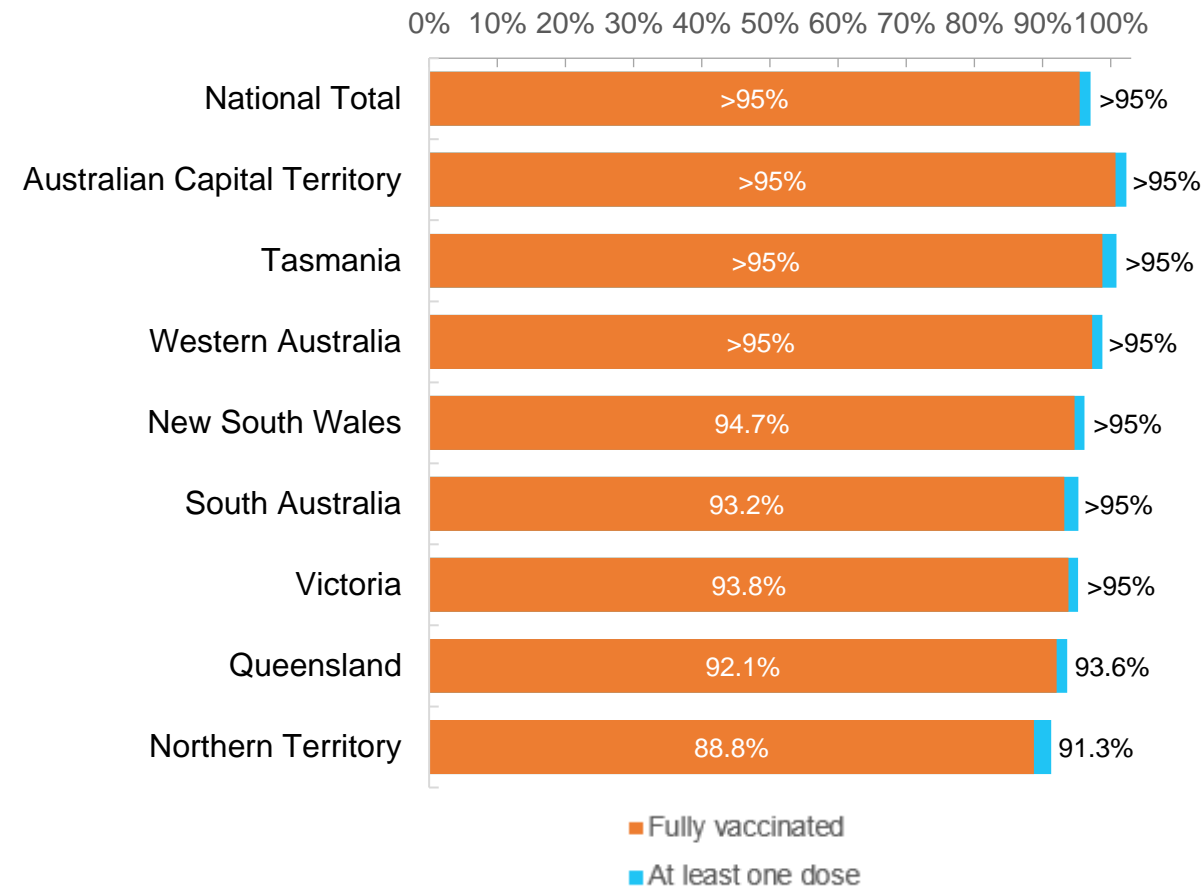


*Not an indication of percentage vaccinated, numbers will exceed 100 due to multiple doses required per person of the population. All doses are included for those aged 12 and above, and are based on vaccination provider location.

Data as at:
26 Apr 2022

Australia's COVID-19
Vaccine Roadmap

First and Second Doses by residential location



Aboriginal and Torres Strait Islander peoples

Number of people vaccinated

Data as at:
26 Apr 2022
Updated weekly

Australia's COVID-19
Vaccine Roadmap



438,702

people over the age of 16
have had at least one dose

84.4%

of people over the age of 16
have had at least one dose



419,101

people over the age of 16
are fully vaccinated

80.7%

of people over the age of 16 are
fully vaccinated



People aged 12 – 15 years

48,565

42,691

68.4%

At least one dose

60.1%

Fully vaccinated

178 Aboriginal community controlled health services (ACCHS)

0#

50

27

44

12

3

21

21

ACT

NSW

NT

QLD

SA

TAS

VIC

WA

Medicare Address State ^{##}	Individuals Dose 1	Individuals Dose 1 %	Individuals Dose 2	Individuals Dose 2 %
Australian Capital Territory	4,792	90.9%	4,673	88.7%
New South Wales	134,640	86.7%	131,513	84.7%
Northern Territory	41,630	89.5%	39,417	84.7%
Queensland	115,367	81.3%	109,778	77.4%
South Australia	19,850	80.0%	18,390	74.1%
Tasmania	13,868	88.5%	13,457	85.9%
Victoria	35,361	89.8%	34,565	87.8%
Western Australia	53,497	86.1%	49,322	79.4%
Unknown/Other Territories	19,697	68.5%	17,986	62.6%
Totals	438,702	84.4%	419,101	80.7%

Source: Australian Immunisation Register

*Identifying as Aboriginal and Torres Strait Islander is optional and the estimated population may be under reported.

**Includes all Aboriginal and Torres Strait Islander peoples who have received a vaccination, not limited to those administered in an ACCHS setting

#ACCHS in the ACT are currently operating as a Commonwealth Vaccine Clinics so not included to avoid double counting

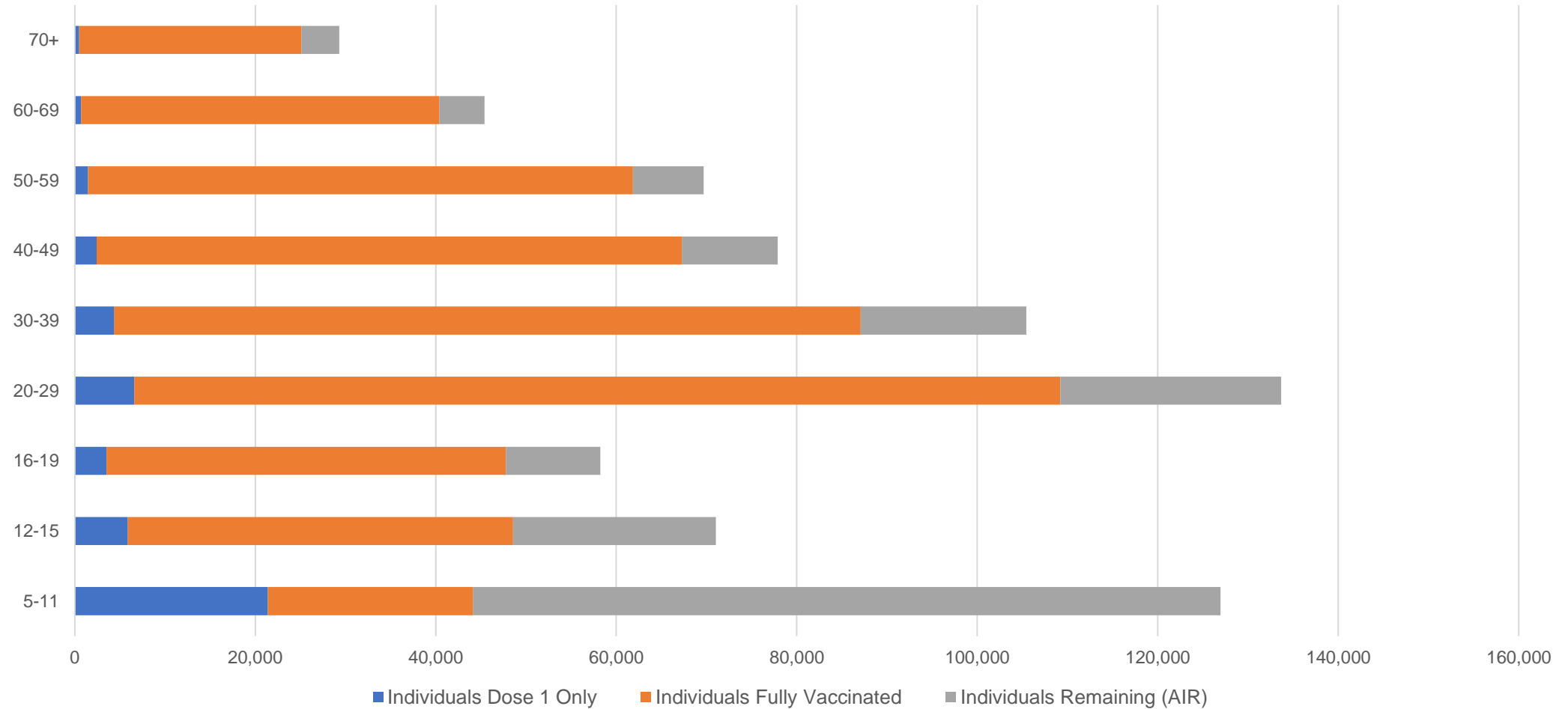
##The above table includes all identified Aboriginal and Torres Strait Islander people who are aged 16 and above by their state of residence.

Aboriginal and Torres Strait Islander peoples

Number of people vaccinated by age

Data as at:
26 Apr 2022
Updated weekly

Australia's COVID-19
Vaccine Roadmap



Source: Australian Immunisation Register

Commonwealth primary care

Data as at:
26 Apr 2022

Australia's COVID-19
Vaccine Roadmap



Primary care vaccine administration sites

5,797	128	178	3,598
GPs	CVCs	ACCHS	Pharmacies



35,282,493 total vaccine doses administered
primary care settings as at 26 April
+ 54,728 recorded in the last 24 hours

Primary care vaccinations by provider type

	Doses administered	Daily increase	7 day increase
General Practice* includes other Commonwealth	28,406,816	38,469	161,871
Pharmacy	6,875,677	16,259	76,736

NSW
12,202,356
(+17,175 daily increase)

VIC
8,776,782
(+11,959 daily increase)

QLD
6,781,366
(+12,161 daily increase)

WA
3,702,200
(+6,482 daily increase)

TAS
655,800
(+1,344 daily increase)

SA
2,090,515
(+3,625 daily increase)

ACT
555,327
(+1,141 daily increase)

NT
212,313
(+334 daily increase)

305,834

doses administered to persons
residing in other territories or with
missing residential information

*General practice includes Commonwealth Vaccination Clinics, Aboriginal Community Health Centres, Royal Flying Doctor Service and other Commonwealth vaccination facilities

Source: Australian Immunisation Register

Data as at:
26 Apr 2022

Commonwealth aged care and disability doses administered



1,273,394 (+ 260 last 24 hours)

Total vaccine doses administered in aged care and disability facilities as at 26 April

Number of doses administered as part of the Commonwealth aged and disability care rollout

NSW
559,533
(+68 daily increase)

VIC
235,576
(+56 daily increase)

QLD
202,868
(+51 daily increase)

WA
107,899
(+88 daily increase)

TAS
22,821
(<10 daily increase)

SA
83,882
(<10 daily increase)

ACT
17,053
(<10 daily increase)

NT
7,520
(<10 daily increase)

36,242

doses administered to persons
residing in other territories or with
missing residential information

*Sourced from the Australian Immunisation Register. Includes all persons vaccinated at participating residential aged care, disability and related industry settings.

**State level breakdown indicates the residential location and may not align to the state in which the vaccination occurred.

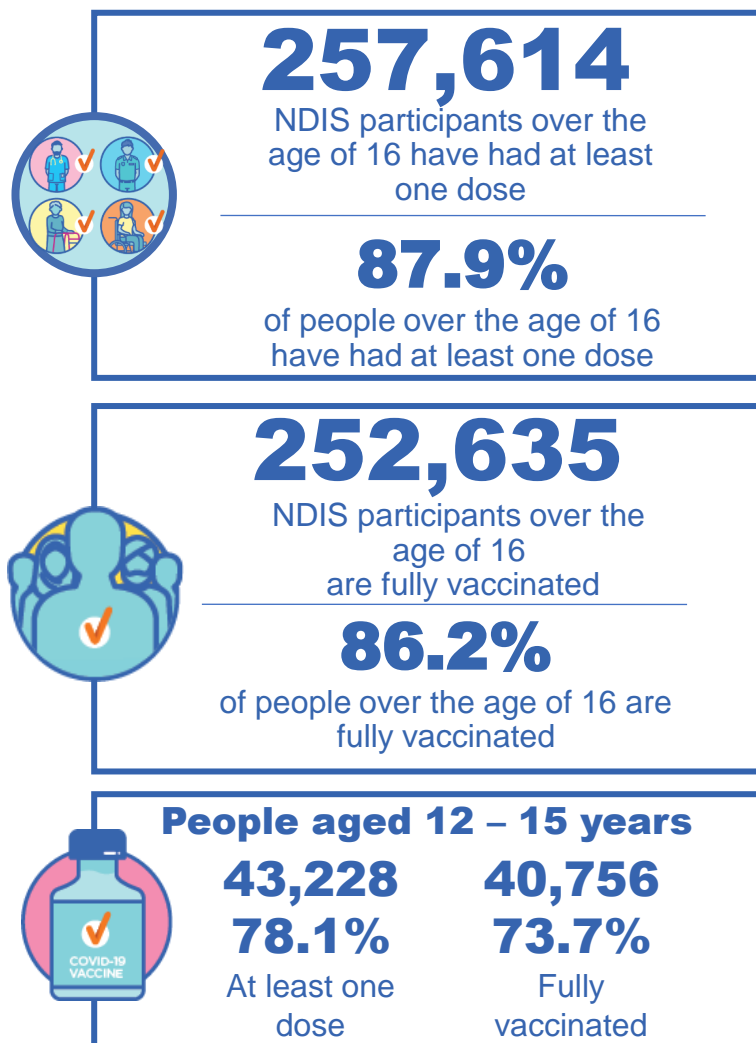
Source: Australian Immunisation Register

National Disability Insurance Scheme (NDIS) reported vaccinations

Data as at:
21 April 2022
Updated weekly

Australia's COVID-19
Vaccine Roadmap

NDIS participant vaccinations



	People aged 16+ with at least one dose	People aged 16+ fully vaccinated	% People aged 16+ with at least one dose	% People aged 16+ fully vaccinated
ACT	4,869	4,802	89.8%	88.5%
NSW	79,128	77,823	88.2%	86.7%
NT	2,228	2,156	78.1%	75.6%
QLD	50,784	49,770	86.3%	84.6%
SA	21,021	20,483	85.7%	83.5%
TAS	6,451	6,290	87.8%	85.6%
VIC	68,562	67,330	89.0%	87.4%
WA	24,571	23,981	89.3%	87.1%
National	257,614	252,635	87.9%	86.2%

Source: Linkage between National Disability Insurance Agency data and the Australian Immunisation Register. Total NDIS participant numbers as at 28 February. Australian Immunisation Register data as at 20 April. Includes all participants regardless of residence type.

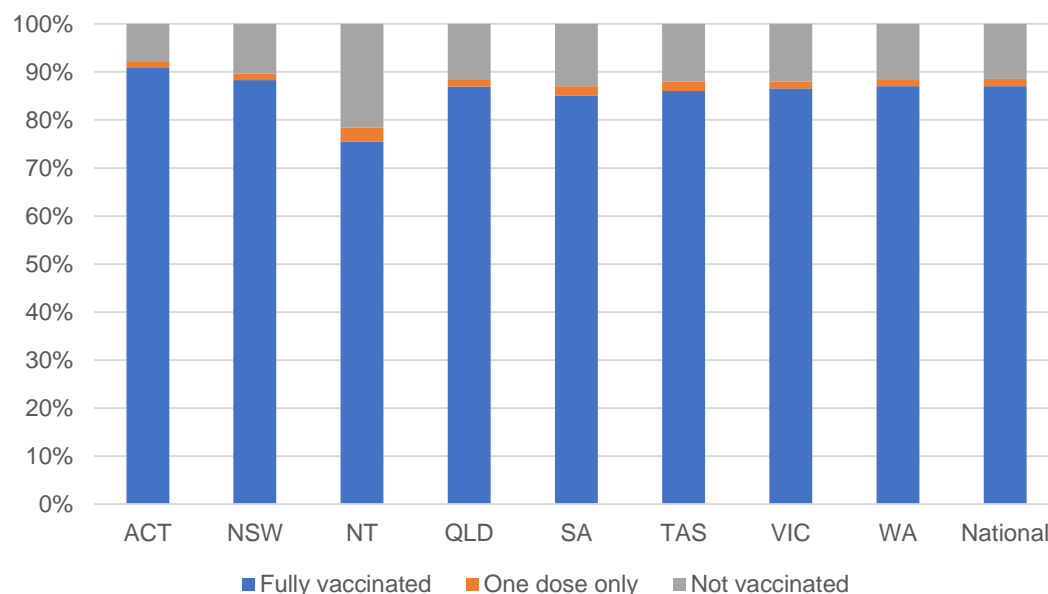
National Disability Insurance Scheme (NDIS) reported vaccinations

Data as at:
21 April 2022
Updated Weekly

Australia's COVID-19
Vaccine Roadmap

NATIONAL	Total people with at least one dose	People fully vaccinated	Total number of individuals in cohort	% People with at least one dose	% People fully vaccinated
NDIS participants living in disability accommodation	20,728	20,385	23,352	88.8%	87.3%

NDIS participants in disability and aged care accommodation



Source: Linkage between National Disability Insurance Agency data and the Australian Immunisation Register. Includes participants residing in disability accommodation only.

Source: Total NDIS participant numbers as at 28 February. Participant data as at 20 April. Australian Immunisation Register data as at 20 April. Worker data as at 20 April.

NDIS workforce vaccinations

	NDIS workers with at least one dose	NDIS workers fully vaccinated	% NDIS workers with at least one dose	% NDIS workers fully vaccinated
NSW	121,789	117,641	98.3%	94.9%
VIC	116,587	112,526	98.3%	94.9%
QLD	69,618	68,740	97.6%	96.4%
WA	32,967	31,161	98.6%	93.2%
SA	35,627	32,670	98.4%	90.2%
TAS	10,701	10,429	99.7%	97.2%
ACT	3,506	3,462	98.3%	97.1%
NT	3,445	3,284	99.4%	94.8%
TOTAL	394,240	379,913	98.3%	94.7%

Source: the NDIS Commission has established a requirement for registered NDIS providers who provide intensive disability support services to report on the vaccination status of workers they employ, or otherwise engage, to deliver NDIS-funded supports and services, and who are required to be vaccinated in accordance with in-force state and territory public health orders. The statistics reflect data reported to the NDIS Commission by registered NDIS providers and should be considered indicative and subject to change

Note: Some registered NDIS providers are yet to report on the vaccination status of their workforce. The NDIS Commission is working with those providers around reporting requirements.

Remaining workers not included include those exempt from vaccination requirements, workers whose vaccination status is not yet verified by the provider (such as workers on leave) and provider reporting anomalies.

Residential aged care vaccination rollout

Residential aged care facilities status

171,753

People fully vaccinated

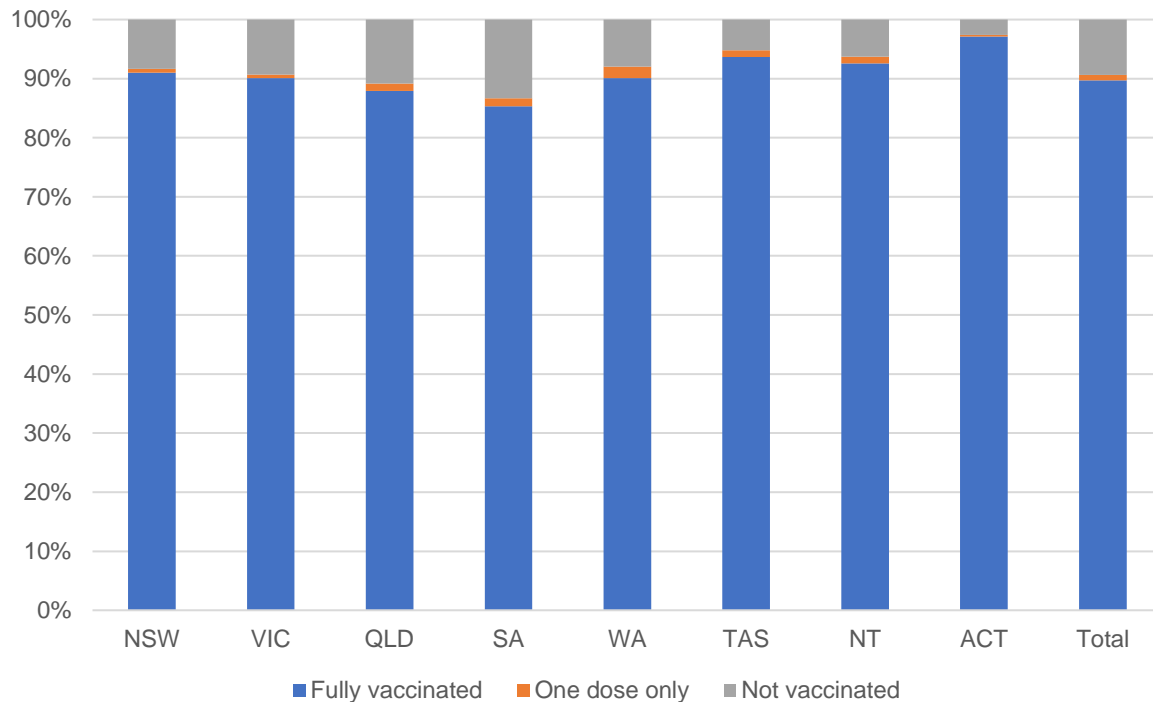
173,554

People with at least one dose

Australia's COVID-19 Vaccine Roadmap

Data as at:
21 Apr 2022
Updated weekly

Aged care resident vaccinations



Aged care worker vaccinations

Jurisdictions	Total workers with at least one dose	Workers fully vaccinated	% Workers with at least one dose	% Workers fully vaccinated
NSW	75,435	75,430	96.7%	96.7%
VIC	65,033	65,029	91.5%	91.5%
QLD	46,146	46,140	95.7%	95.7%
SA	26,415	26,398	96.8%	96.8%
WA	24,070	24,068	99.4%	99.4%
TAS	7,561	7,559	100.0%	100.0%
NT	881	881	100.0%	100.0%
ACT	2,976	2,976	100.0%	100.0%
Total	248,517	248,481	95.5%	95.5%

Source: My Aged Care Portal vaccination progress

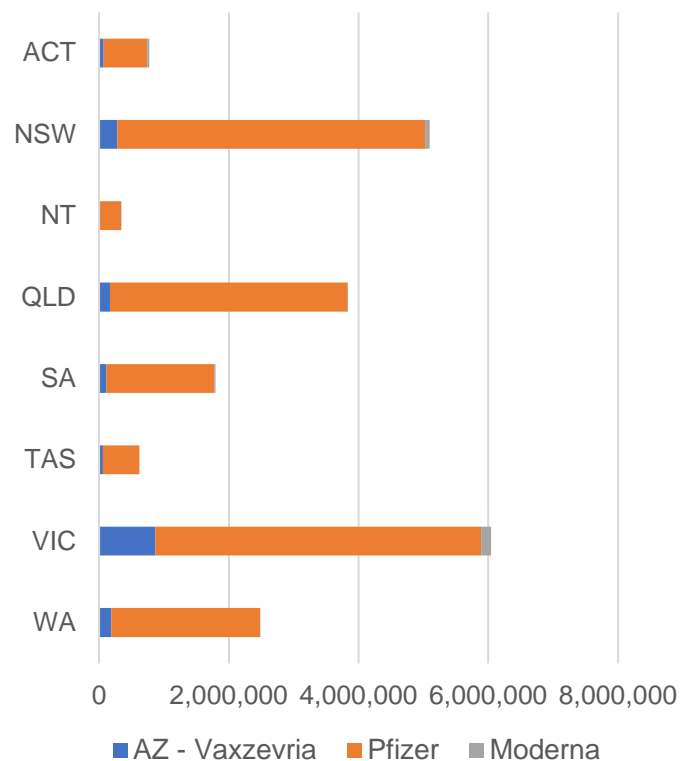
*Status updates are provided by facilities at least once per week. Reporting is updated Monday to Friday to encompass different facility updates being made on different days.

Data is sourced directly from Aged Care Service Providers and is not drawn or closely aligned with data from AIR due to inconsistencies and potential lags in uploading of records.

Data as at:
26 Apr 2022

Jurisdiction administered

Total vaccine doses administered in State and Territory clinics as at 26 April



20,993,075 total vaccine doses administered
in State and Territory clinics as at 26 April
+ **9,460** recorded in the last 24 hours
+ **61,209** recorded in the last 7 days

NSW
5,095,249
(+1,235 daily
increase)

VIC
6,049,586
(+2,799 daily
increase)

QLD
3,834,869
(+627 daily
increase)

WA
2,485,223
(+1,808 daily
increase)

TAS
618,932
(+347 daily
increase)

SA
1,796,201
(+1,041 daily
increase)

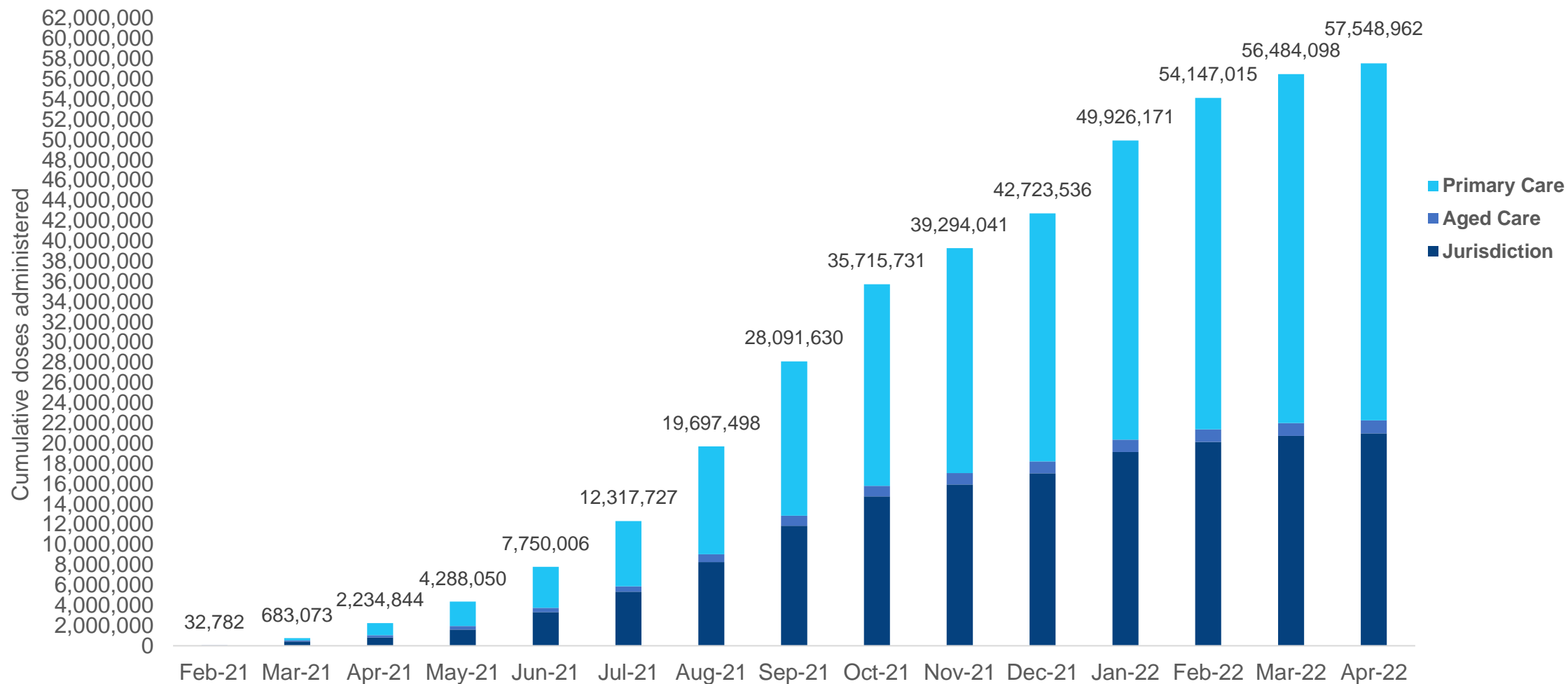
ACT
774,464
(+815 daily
increase)

NT
338,551
(+788 daily
increase)

*Sourced from the Australian Immunisation Register. Numbers are calculated as difference in daily cumulative reported numbers to allow for historical corrections.

Cumulative doses administered by channel

Data as at:
26 Apr 2022



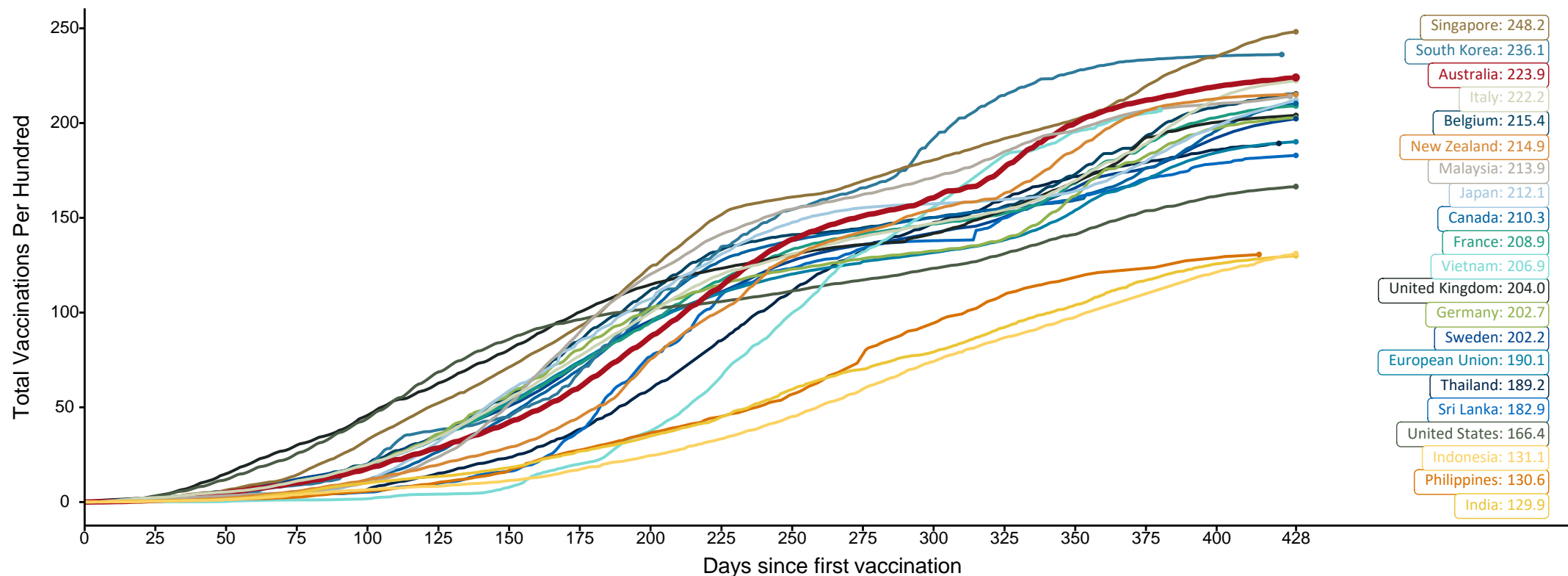
Source: Australian Immunisation Register

Doses at equivalent stages of rollout (Day 428)

Data as at:
26 Apr 2022

The x-axis is truncated at the length of Australia's vaccination program. Countries with intermittent reporting have had their doses per 100 imputed to Australia's current stage of rollout. Israel excluded as it is beyond scale of the graph

Cumulative doses administered (26 Apr): **57,548,962**



Note: From 11 January 2022, data for Australia includes all doses administered to people 5 and over. Prior to 11 January, data was for 12 and over.

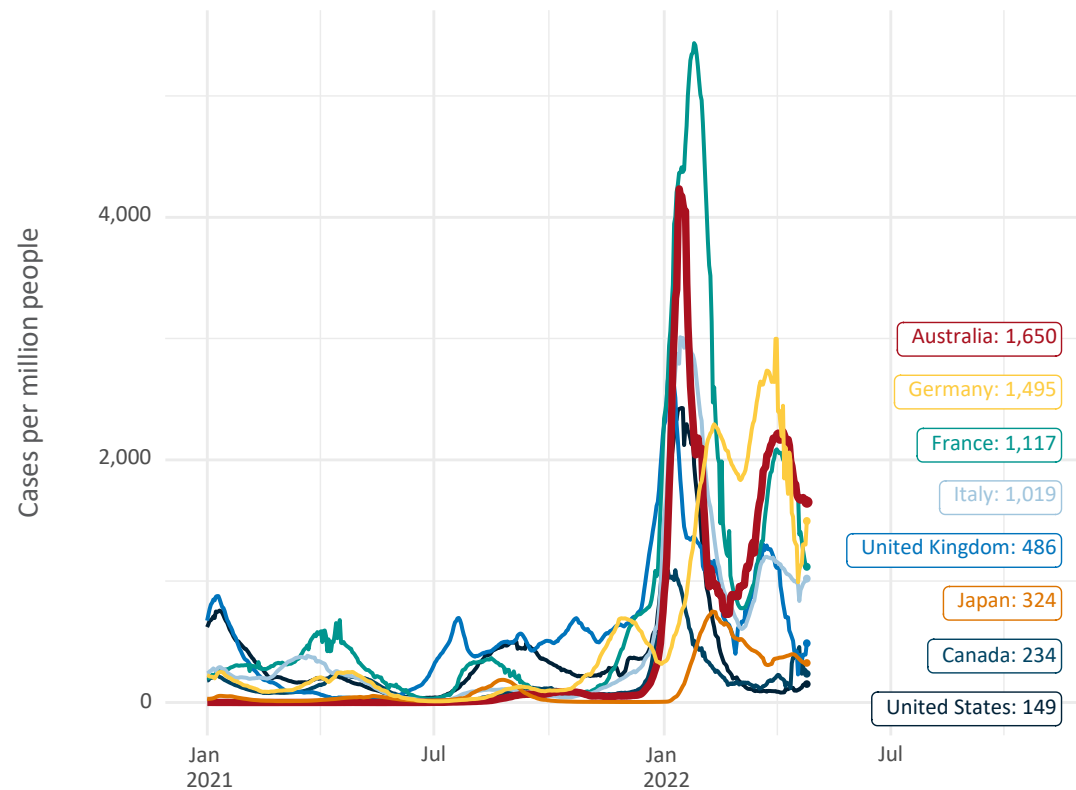
Source: Department of Health (Australia), Our World in Data (international)

Latest data: 26 April

Data as at:
26 Apr 2022

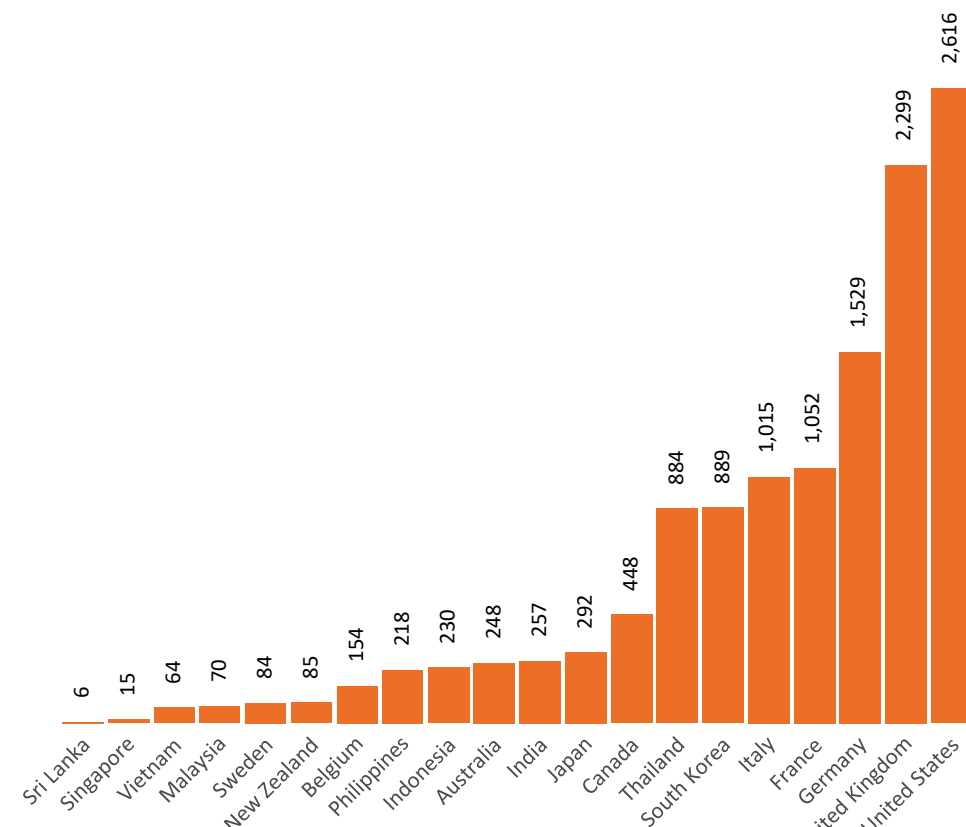
International data – COVID-19

New daily cases per million in 2021, Australia and G7 countries
Smoothed - 7 day average



Source: OWID
Data downloaded: 27 Apr 2022 09:45
Latest data: 25 Apr 2022

COVID-19 deaths in past 7 days - Australia and select countries

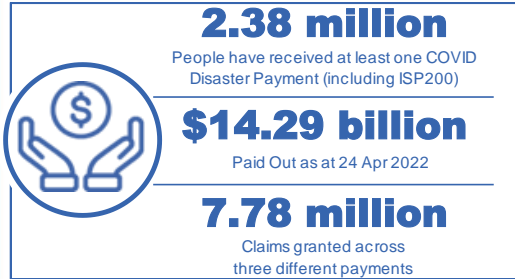


Source: OWID
Data downloaded: 27 Apr 2022 09:45
Latest data: 25 Apr 2022

Pandemic Response Payments

Australia's COVID-19
Vaccine Roadmap

Data as at midnight: 24 Apr 2022
Updated weekly



COVID Disaster Payment:	5.89 million claims received - 2.19 million individuals paid a total of \$12.59 billion.
\$200 Income Support Payment:	353,000 claims received - 183,000 individuals paid a total of \$268.9 million.
Pandemic Leave Disaster Payment:	2.03 million claims received - 1.24 million individuals paid a total of \$1.42 billion.



COVID Disaster Payment

assisting during a lockdown event in a Commonwealth hotspot.

Income Support Payment \$200

for income support recipients who lost at least 8 hours of work.

Pandemic Leave Disaster Payment

for those who have to self-isolate, quarantine or care.

For more information visit:
servicesaustralia.gov.au

COVID-19 DISASTER PAYMENTS

Northern Territory

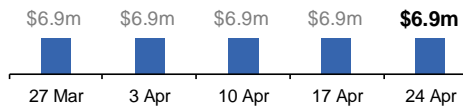
Lockdown (#3) from 16 Nov to 22 Nov
Claiming period ended 27 Dec

7,500 people have received at least one COVID Disaster Payment.

\$6.9m paid out as at 24 Apr 2022.

Nil paid in initial payments in the week ending 24 Apr 2022.

Cumulative payments made by Territory since activation on 25 Aug 2021.



Victoria

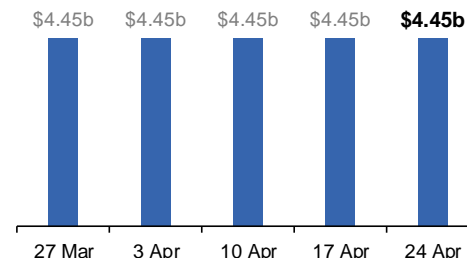
Lockdown (#6) from 6 Aug to 28 Oct
Claiming period ended 9 Dec

745,000 people have received at least one COVID Disaster Payment.

\$4.45b paid out as at 24 Apr 2022.

Nil paid in initial and reoccurring payments in the week ending 24 Apr 2022.

Cumulative payments made by State since activation on 8 Jun 2021.



New South Wales

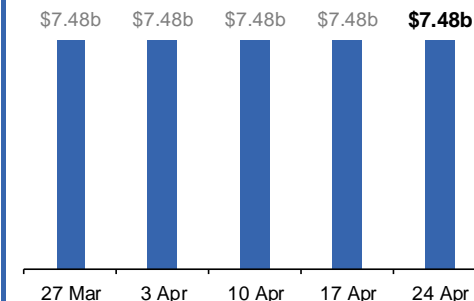
Lockdown from 24 Jun to 10 Oct
Claiming period ended 27 Nov

1.08m people have received at least one COVID Disaster Payment.

\$7.48b paid out as at 24 Apr 2022.

Nil paid in initial and reoccurring payments in the week ending 24 Apr 2022.

Cumulative payments made by State since activation on 1 Jul 2021.



Australian Capital Territory

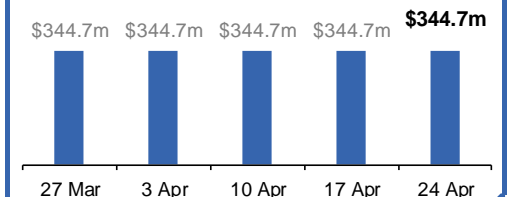
Lockdown from 12 Aug to 14 Oct
Claiming period ended 25 Nov

65,000 people have received at least one COVID Disaster Payment.

\$344.7m paid out as at 24 Apr 2022.

Nil paid in initial and reoccurring payments in the week ending 24 Apr 2022.

Cumulative payments made by Territory since activation on 20 Aug 2021.



Pandemic Response Payments (continued)

Data as at midnight: 24 Apr 2022
Updated weekly

COVID-19 DISASTER PAYMENTS

