



Australian Government
Operation COVID Shield

COVID-19 Vaccine Roll-out

22 April 2022

Data as at:
21 Apr 2022

Total vaccine doses



57,375,662 total vaccine doses administered nationally as at 21 April

+64,936 recorded in the last 24 hours



20,005,528

people have had at least one dose

>95%

of people over the age of 16 have had at least one dose



19,670,333

people are fully vaccinated

>95%

of people over the age of 16 are fully vaccinated



13,314,443

people over the age of 16 who have received more than two doses

NSW
17,803,734
(+18,752 daily increase)

VIC
15,100,342
(+15,313 daily increase)

QLD
10,864,419
(+11,985 daily increase)

WA
6,299,162
(+8,247 daily increase)

TAS
1,291,284
(+1,600 daily increase)

SA
3,953,319
(+4,606 daily increase)

ACT
1,493,514
(+2,213 daily increase)

NT
569,888
(+2,220 daily increase)

*Administration state breakdown indicates state in which a vaccine was administered

**Overall dose count includes instances of more than three doses per person in a small number of cases.

Source: Australian Immunisation Register

Booster Vaccinations

Data as at:
21 Apr 2022



204,234

Indigenous people who have received three or more doses

52.7%

of eligible population (387,875)



165,121

Aged Care Residents who have received three or more doses##

96.1%

of eligible population (171,824)



181,107

NDIS participants

who have received three or more doses#

73.7%

of eligible population (245,000)

21,061

NDIS residents

who have received three or more doses#

88.0%

of eligible population (23,000)



13,314,443

total people who have received three or more doses

+20,531 daily increase

69.1% of eligible population (19,278,606)

	Number of People	Daily Increase	% of Eligible
NSW	4,072,685	5,297	65.9%
VIC	3,572,209	3,960	70.9%
QLD	2,305,997	3,632	62.5%
WA	1,620,350	3,596	85.3%
SA	942,529	1,368	72.3%
TAS	303,613	490	71.8%
ACT	264,585	284	76.8%
NT	121,018	1,545	73.7%

*People may belong to multiple groups and could be represented in the above breakdowns multiple times.

NDIS participants data as at 20 April 2022.

Aged Care Residents data as at 21 April 2022.

Source: Australian Immunisation Register

111,457

doses administered to persons residing in other territories or with missing residential information

Winter / Fourth Doses

Data as at:
18 Apr 2022
Updated weekly



215,070 total people (16+) who have received four or more doses

+52,590 weekly increase

	Number of People 16+	Weekly Increase
ACT	6,722	1,571
NSW	79,715	18,038
NT	1,705	258
QLD	37,432	10,443
SA	13,481	3,569
TAS	5,635	1,658
VIC	53,732	13,097
WA	15,482	3,673

1,166 doses administered to persons
residing in other territories or with
missing residential information

*People may belong to multiple groups and could be represented in the above breakdowns multiple times.

Source: Australian Immunisation Register

Data as at: 21 Apr 2022

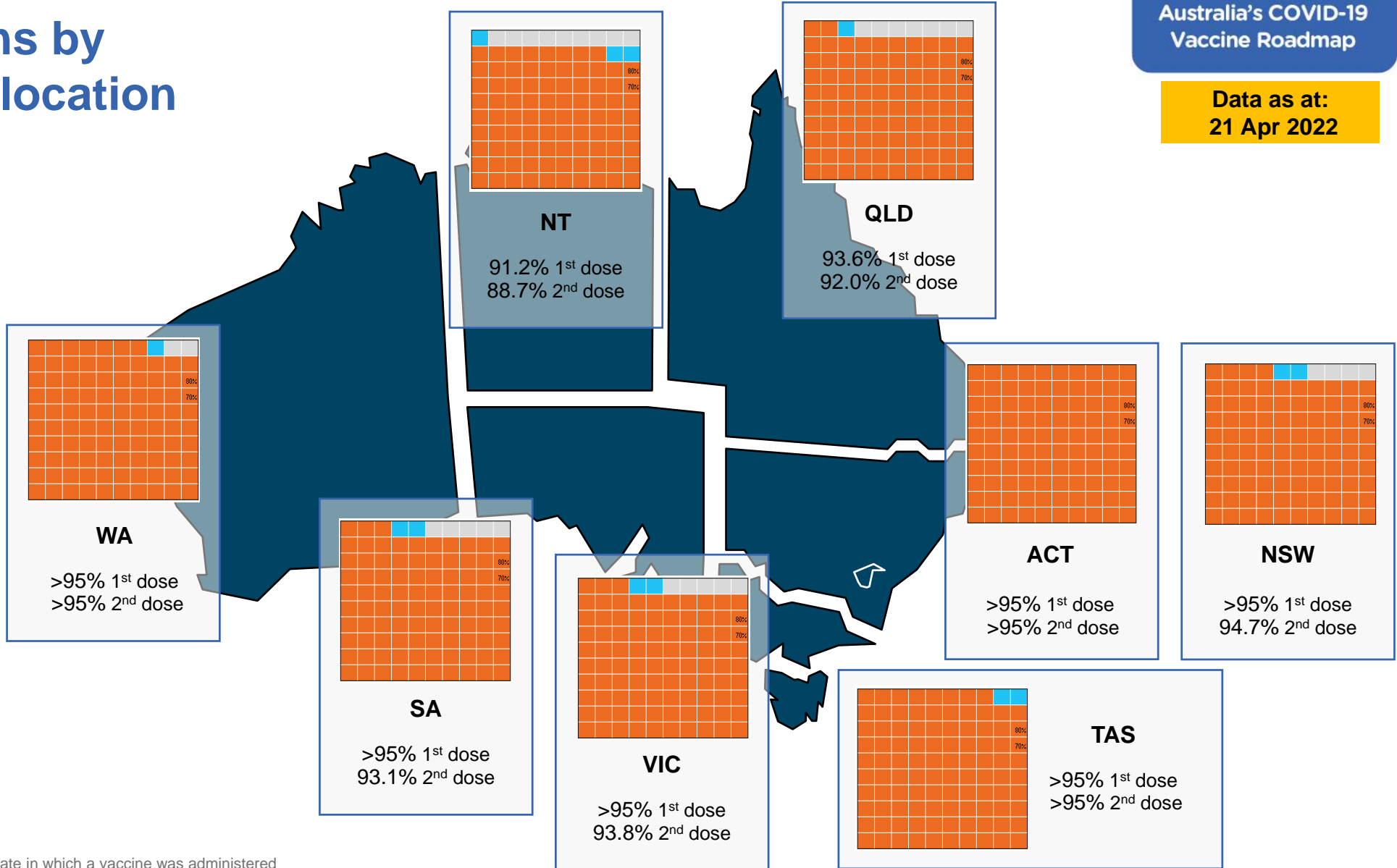
Vaccinations by residential location

First doses

Age	Today	4 weeks ago	8 weeks ago
16+	>95%	>95%	>95%
50+	>95%	>95%	>95%
70+	>95%	>95%	>95%

Fully vaccinated

Age	Today	4 weeks ago	8 weeks ago
16+	>95%	>95%	94.7%
50+	>95%	>95%	>95%
70+	>95%	>95%	>95%



*Residential state may differ from the state in which a vaccine was administered

Commonwealth and Jurisdiction vaccine doses administered

Data as at:
21 Apr 2022



57,375,662 total vaccine doses administered nationally as at 21 April

+ 64,936 recorded in the last 24 hours



20,956,157

doses administered by state and territory facilities

+ 12,200

recorded in the last 24 hours

NSW	Jurisdictions	Commonwealth
Cumulative	5,088,686	12,715,048
Daily increase	1,653	17,099

TAS	Jurisdictions	Commonwealth
Cumulative	617,939	673,345
Daily increase	419	1,181

VIC	Jurisdictions	Commonwealth
Cumulative	6,039,434	9,060,908
Daily increase	3,305	12,008

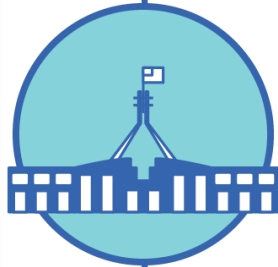
SA	Jurisdictions	Commonwealth
Cumulative	1,791,973	2,161,346
Daily increase	1,420	3,186

QLD	Jurisdictions	Commonwealth
Cumulative	3,831,834	7,032,585
Daily increase	850	11,135

ACT	Jurisdictions	Commonwealth
Cumulative	771,445	722,069
Daily increase	1,186	1,027

WA	Jurisdictions	Commonwealth
Cumulative	2,479,138	3,820,024
Daily increase	1,970	6,277

NT	Jurisdictions	Commonwealth
Cumulative	335,708	234,180
Daily increase	1,397	823



36,419,505

doses administered by commonwealth facilities

+ 52,736

recorded in the last 24 hours

35,147,636 total vaccine doses administered in primary care settings

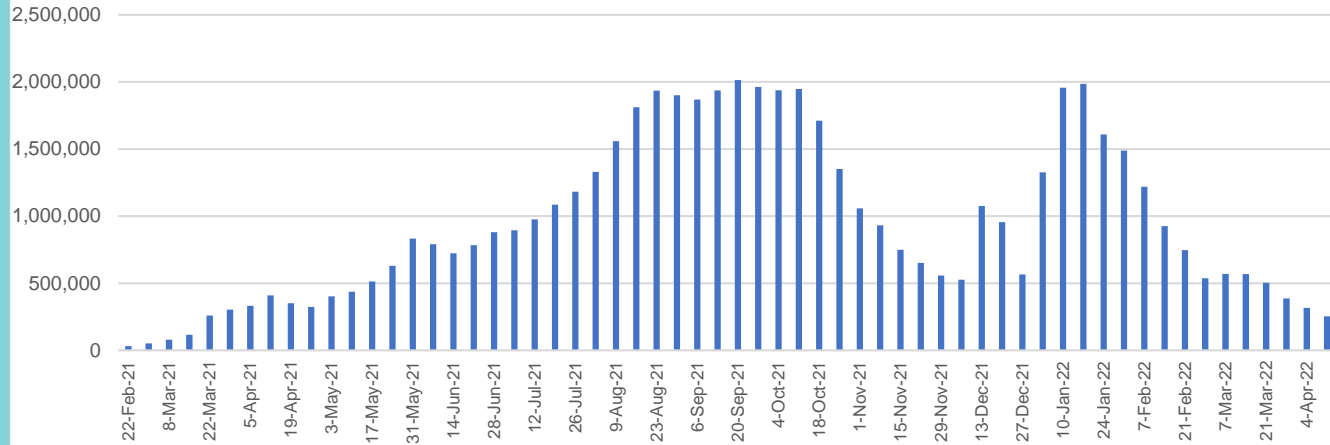
1,271,869 total vaccine doses administered in aged care and disability settings

Vaccine milestone charts

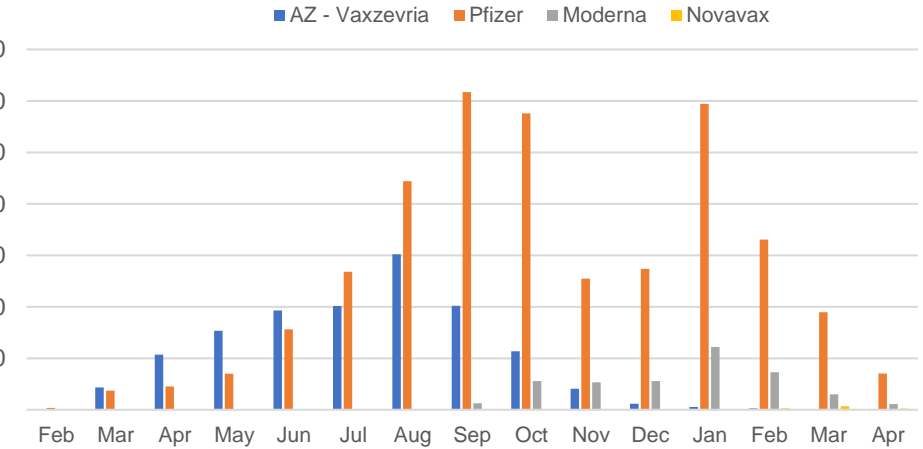
Data as at:
21 Apr 2022

Australia's COVID-19
Vaccine Roadmap

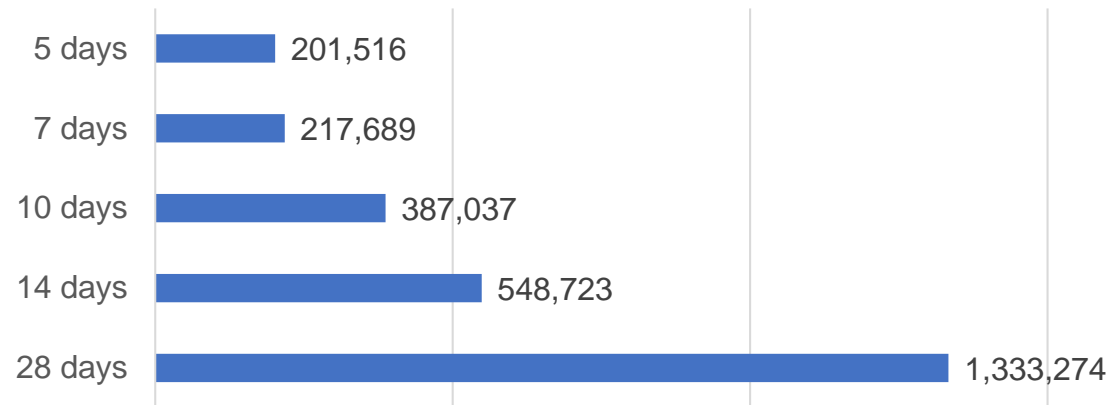
Doses Administered by Week



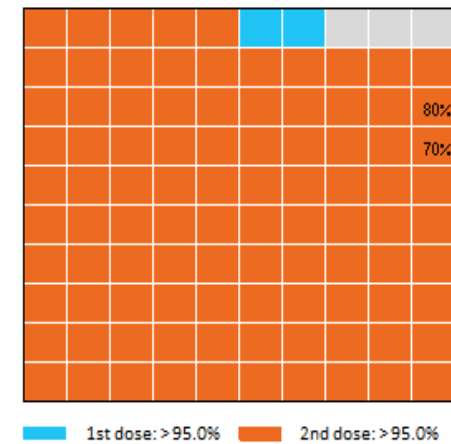
Doses by administration month and vaccine type



Doses Reported



Eligible population percentage coverage



*Each square represents 1% of the national population.
Squares are filled as milestones are achieved.

*Sourced from the Australian Immunisation Register.

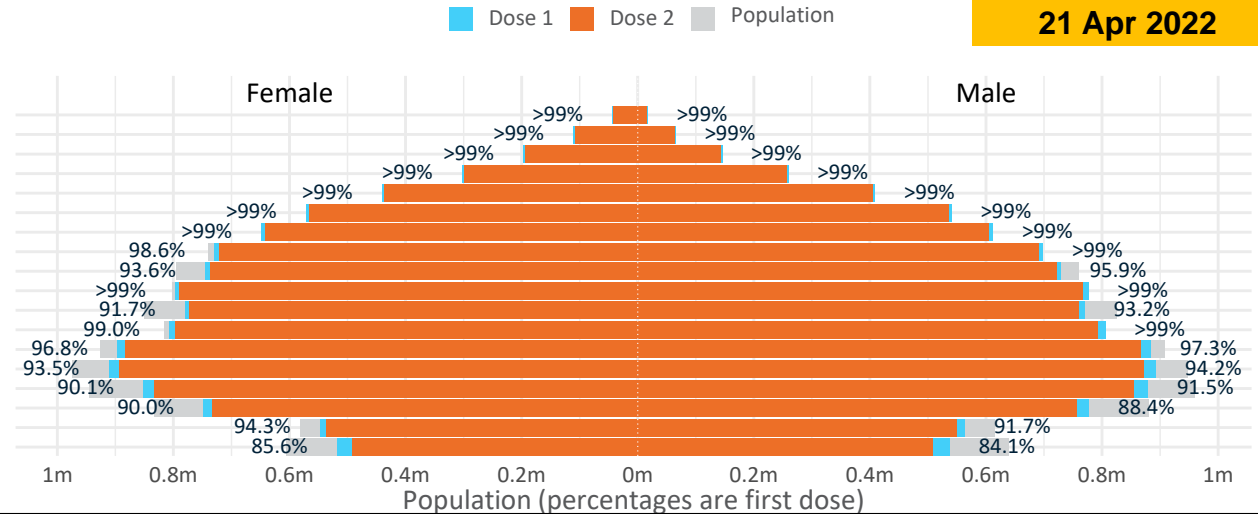
Doses by age and sex

First and second doses by age and sex

	16+	50+	12-15	5-11
Dose 1	97.02% (20,005,528 doses / 20,619,959 people)	>99% (8,851,215 doses / 8,749,703 people)	84.89% (1,056,014 doses / 1,243,990 people)	52.79% (1,201,784 doses / 2,276,638 people)
Dose 2	95.39% (19,670,333 doses / 20,619,959 people)	>99% (8,744,175 doses / 8,749,703 people)	80.40% (1,000,120 doses / 1,243,990 people)	35.19% (801,203 doses / 2,276,638 people)

**Data as at:
21 Apr 2022**

Age	Dose 1	Dose 2
95+	61,619 (>99%)	58,227 (>99%)
90-94	176,727 (>99%)	171,059 (>99%)
85-89	343,149 (>99%)	336,094 (>99%)
80-84	562,960 (>99%)	555,598 (>99%)
75-79	850,654 (>99%)	842,207 (>99%)
70-74	1,113,738 (>99%)	1,102,769 (>99%)
65-69	1,262,531 (>99%)	1,248,292 (>99%)
60-64	1,429,130 (>99%)	1,412,912 (98.3%)
55-59	1,475,607 (94.9%)	1,459,062 (93.8%)
50-54	1,575,100 (>99%)	1,557,955 (>99%)
45-49	1,552,005 (92.6%)	1,533,112 (91.4%)
40-44	1,615,359 (>99%)	1,590,967 (98.2%)
35-39	1,786,301 (97.3%)	1,753,998 (95.6%)
30-34	1,813,251 (94.3%)	1,771,464 (92.1%)
25-29	1,741,832 (91.4%)	1,694,555 (88.9%)
20-24	1,533,055 (89.5%)	1,493,733 (87.2%)
16-19	1,112,510 (93.0%)	1,088,329 (91.0%)
12-15	1,056,014 (84.9%)	1,000,120 (80.4%)



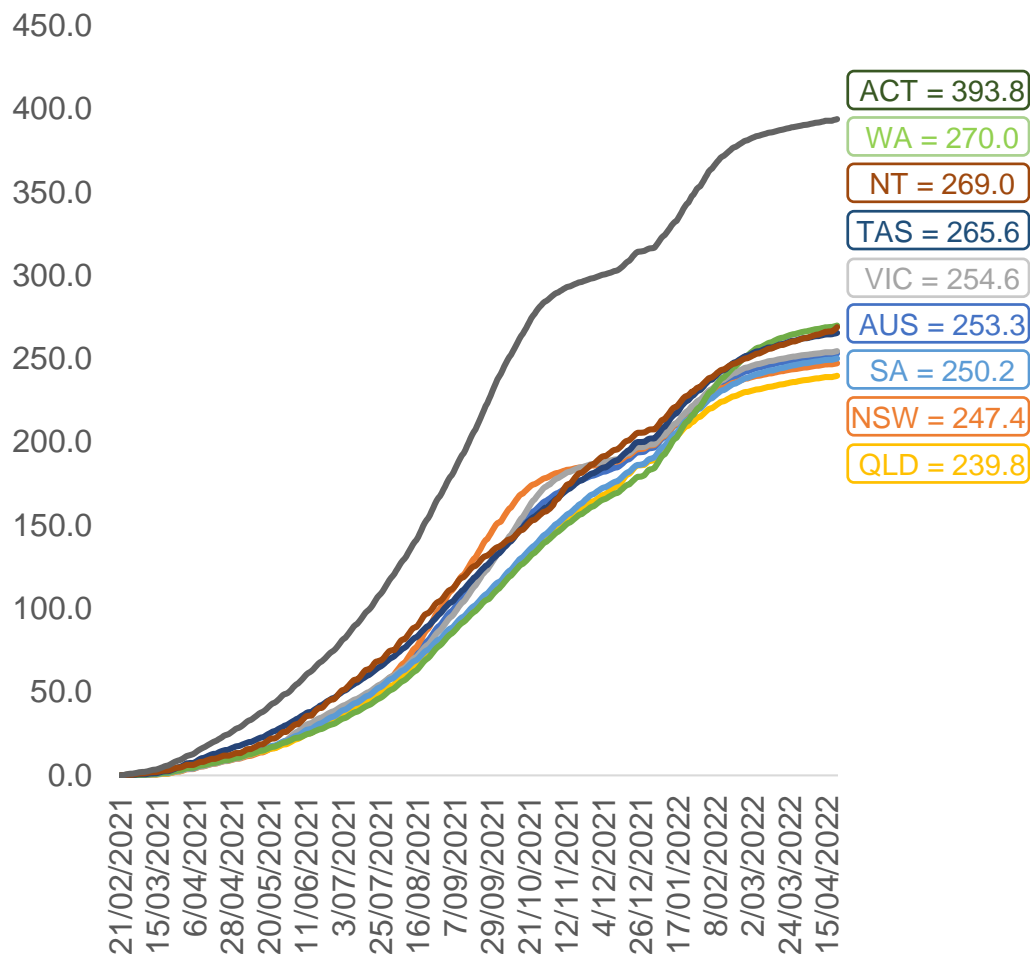
	AUS	ACT	NSW	NT	QLD	SA	TAS	VIC	WA
16 and over - dose 1	20,005,528	351,885	6,313,281	173,842	3,849,270	1,371,534	443,871	5,148,124	2,088,912
16 and over - dose 2	19,670,333	346,393	6,217,803	169,065	3,784,241	1,341,572	434,633	5,071,907	2,056,384
16 and over - population	20,619,959*	344,037	6,565,651	190,571	4,112,707	1,440,400	440,172	5,407,574	2,114,978
16 and over % with dose 1	97.02%	>99%	96.16%	91.22%	93.59%	95.22%	>99%	95.20%	98.77%
16 and over % with dose 2	95.39%	>99%	94.70%	88.71%	92.01%	93.14%	98.74%	93.79%	97.23%
5 to 11 - dose 1	1,201,784	31,926	357,920	13,227	209,550	84,318	28,815	326,897	141,279
5 to 11 - dose 2	801,203	25,147	240,308	7,632	138,480	56,956	22,063	219,857	86,720
5 to 11 - population	2,276,638	39,789	716,460	24,750	478,731	148,816	45,033	578,499	244,154
5 to 11 % with dose 1	52.79%	80.24%	49.96%	53.44%	43.77%	56.66%	63.99%	56.51%	57.86%
5 to 11 % with dose 2	35.19%	63.20%	33.54%	30.84%	28.93%	38.27%	48.99%	38.00%	35.52%
12 to 15 - dose 1	1,056,014	20,135	325,033	10,863	207,201	68,496	22,954	275,759	115,930
12 to 15 - dose 2	1,000,120	19,579	310,463	9,790	194,169	64,805	21,830	263,960	107,103
12 to 15 - population	1,243,990	19,693	390,330	13,060	270,146	82,747	26,308	308,611	132,869
12 to 15 % with dose 1	84.89%	>99%	83.27%	83.18%	76.70%	82.78%	87.25%	89.35%	87.25%
12 to 15 % with dose 2	80.40%	>99%	79.54%	74.96%	71.88%	78.32%	82.98%	85.53%	80.61%

*National population will not equal sum of listed jurisdictions due to a small number of people counted in national population residing in some 'other' territories. Sum of state doses will not add to national total as some records are unable to be geocoded to a State or Territory. Doses sourced from Australian Immunisation Register, population from ABS ERP June 2020

Data as at:
21 Apr 2022

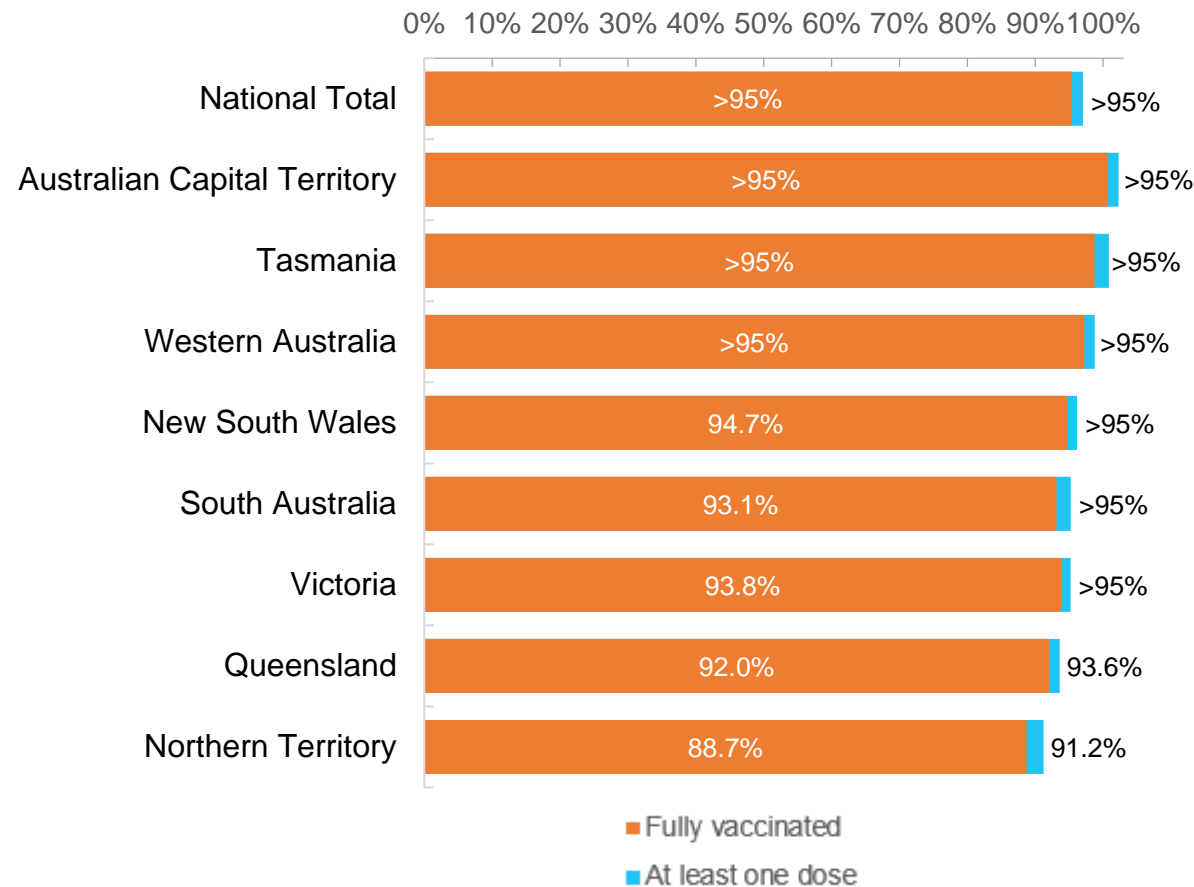
Vaccinations by location

Cumulative total doses administered vs eligible state populations*



*Not an indication of percentage vaccinated, numbers will exceed 100 due to multiple doses required per person of the population. All doses are included for those aged 12 and above, and are based on vaccination provider location.

First and Second Doses by residential location



Aboriginal and Torres Strait Islander peoples

Number of people vaccinated

Data as at:
19 Apr 2022
Updated weekly

Australia's COVID-19
Vaccine Roadmap



437,863

people over the age of 16
have had at least one dose

84.4%

of people over the age of 16
have had at least one dose



417,961

people over the age of 16
are fully vaccinated

80.5%

of people over the age of 16 are
fully vaccinated



People aged 12 – 15 years

48,586

42,655

68.4%

60.1%

At least one dose

Fully vaccinated

178 Aboriginal community controlled health services (ACCHS)

0#	50	27	44	12	3	21	21
ACT	NSW	NT	QLD	SA	TAS	VIC	WA

Medicare Address State ^{##}	Individuals Dose 1	Individuals Dose 1 %	Individuals Dose 2	Individuals Dose 2 %
Australian Capital Territory	4,789	90.9%	4,671	88.7%
New South Wales	134,375	86.7%	131,225	84.7%
Northern Territory	41,690	89.5%	39,434	84.6%
Queensland	115,134	81.3%	109,485	77.3%
South Australia	19,799	79.9%	18,329	74.0%
Tasmania	13,833	88.5%	13,422	85.8%
Victoria	35,270	89.7%	34,465	87.7%
Western Australia	53,439	86.0%	49,135	79.1%
Unknown/Other Territories	19,534	68.3%	17,795	62.2%
Totals	437,863	84.4%	417,961	80.5%

Source: Australian Immunisation Register

*Identifying as Aboriginal and Torres Strait Islander is optional and the estimated population may be under reported.

**Includes all Aboriginal and Torres Strait Islander peoples who have received a vaccination, not limited to those administered in an ACCHS setting

#ACCHS in the ACT are currently operating as a Commonwealth Vaccine Clinics so not included to avoid double counting

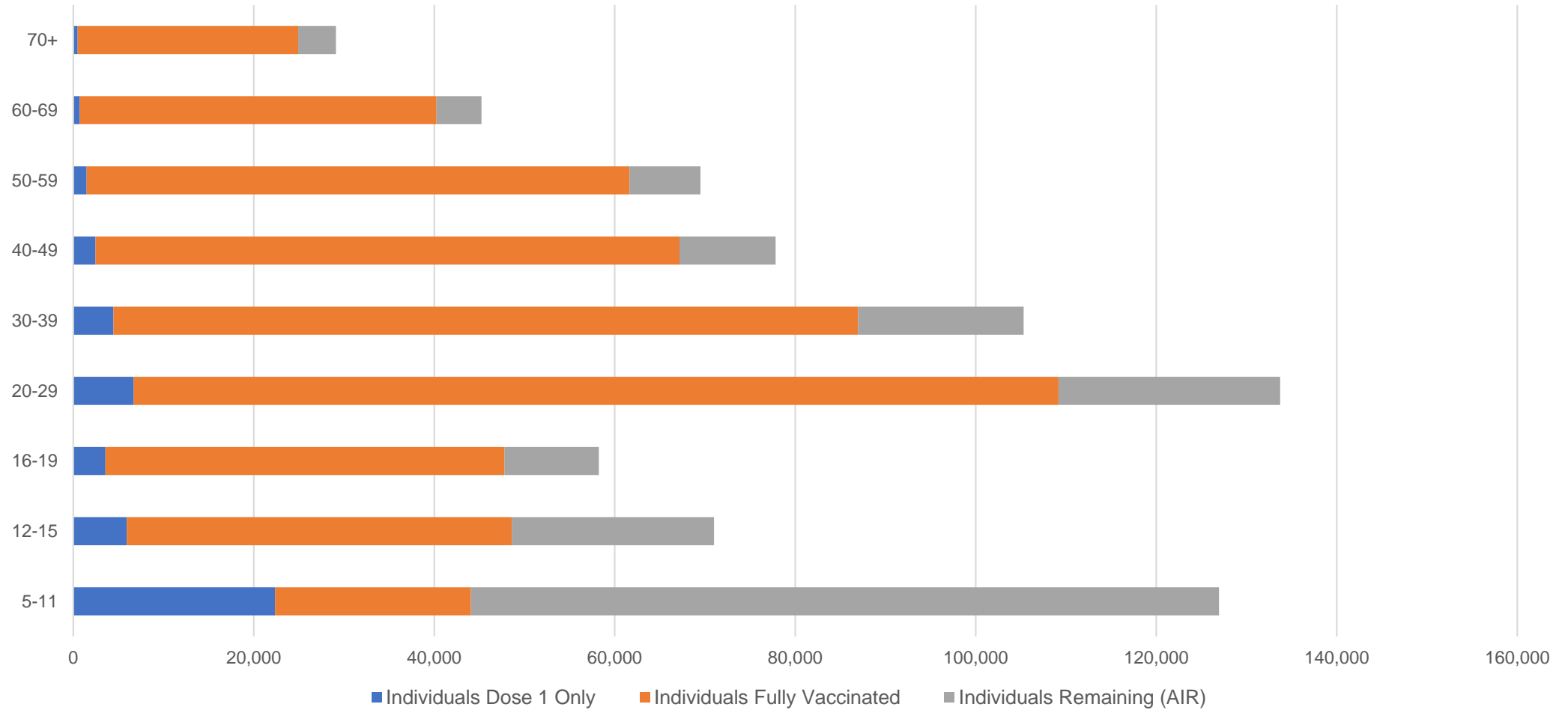
##The above table includes all identified Aboriginal and Torres Strait Islander people who are aged 16 and above by their state of residence.

Aboriginal and Torres Strait Islander peoples

Number of people vaccinated by age

Data as at:
19 Apr 2022
Updated weekly

Australia's COVID-19
Vaccine Roadmap



Source: Australian Immunisation Register

Commonwealth primary care

Data as at:
21 Apr 2022

Australia's COVID-19
Vaccine Roadmap



Primary care vaccine administration sites

5,793	128	178	3,598
GPs	CVCs	ACCHS	Pharmacies



35,147,636 total vaccine doses administered
primary care settings as at 21 April
+ 52,344 recorded in the last 24 hours

Primary care vaccinations by provider type

	Doses administered	Daily increase	7 day increase
General Practice* includes other Commonwealth	28,314,973	35,429	112,263
Pharmacy	6,832,663	16,915	58,302

NSW
12,159,062
(+16,813 daily increase)

VIC
8,745,984
(+11,938 daily increase)

QLD
6,753,751
(+10,783 daily increase)

WA
3,685,411
(+6,158 daily increase)

TAS
652,658
(+1,121 daily increase)

SA
2,082,101
(+3,124 daily increase)

ACT
552,903
(+974 daily increase)

NT
211,211
(+652 daily increase)

304,555

doses administered to persons residing in other territories or with missing residential information

*General practice includes Commonwealth Vaccination Clinics, Aboriginal Community Health Centres, Royal Flying Doctor Service and other Commonwealth vaccination facilities

Source: Australian Immunisation Register

Data as at:
21 Apr 2022

Commonwealth aged care and disability doses administered



1,271,869 (+ 392 last 24 hours)

Total vaccine doses administered in aged care and disability facilities as at 21 April

Number of doses administered as part of the Commonwealth aged and disability care rollout

NSW
559,251
(+174 daily increase)

VIC
235,013
(+21 daily increase)

QLD
202,593
(+103 daily increase)

WA
107,655
(+77 daily increase)

TAS
22,740
(-3# daily increase)

SA
83,876
(-4# daily increase)

ACT
17,014
(+2 daily increase)

NT
7,523
(+14 daily increase)

36,204

doses administered to persons residing in other territories or with missing residential information

Source: Australian Immunisation Register

*Sourced from the Australian Immunisation Register. Includes all persons vaccinated at participating residential aged care, disability and related industry settings.

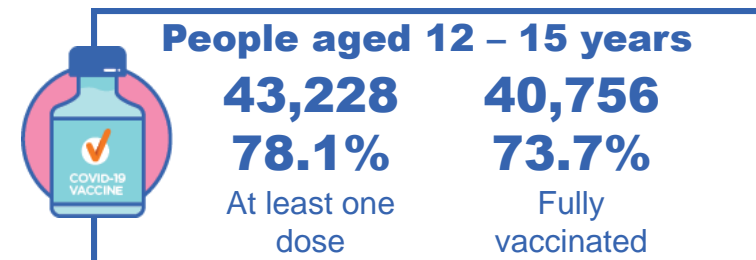
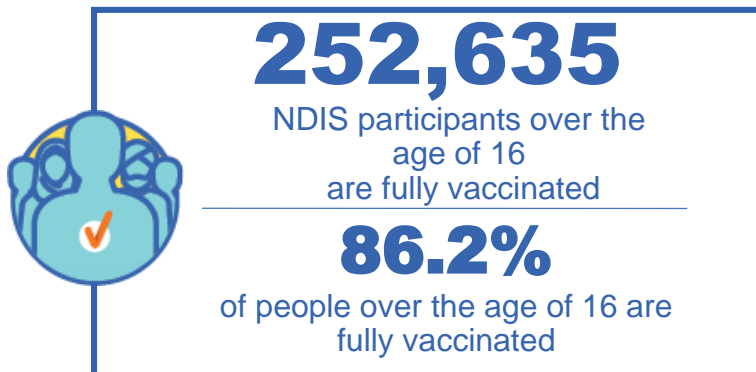
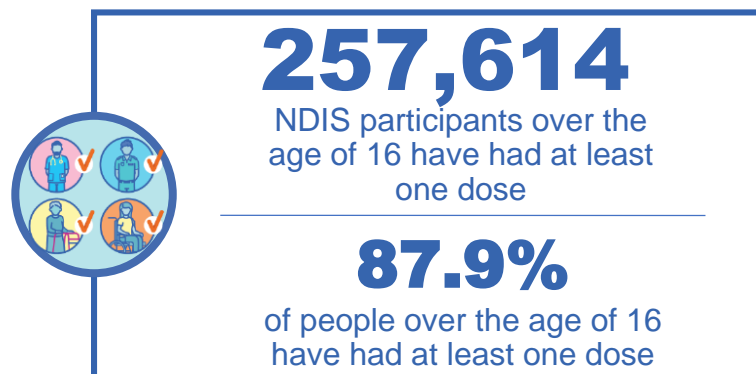
**State level breakdown indicates the residential location and may not align to the state in which the vaccination occurred.

#Numbers are calculated as difference in daily cumulative reported numbers to allow for historical corrections in all data sources. This can occasionally result in negative numbers, such as for TAS and SA, where historical details about doses have been updated.

National Disability Insurance Scheme (NDIS) reported vaccinations

Data as at:
21 April 2022
Updated weekly

Australia's COVID-19
Vaccine Roadmap



NDIS participant vaccinations

	People aged 16+ with at least one dose	People aged 16+ fully vaccinated	% People aged 16+ with at least one dose	% People aged 16+ fully vaccinated
ACT	4,869	4,802	89.8%	88.5%
NSW	79,128	77,823	88.2%	86.7%
NT	2,228	2,156	78.1%	75.6%
QLD	50,784	49,770	86.3%	84.6%
SA	21,021	20,483	85.7%	83.5%
TAS	6,451	6,290	87.8%	85.6%
VIC	68,562	67,330	89.0%	87.4%
WA	24,571	23,981	89.3%	87.1%
National	257,614	252,635	87.9%	86.2%

Source: Linkage between National Disability Insurance Agency data and the Australian Immunisation Register. Total NDIS participant numbers as at 28 February. Australian Immunisation Register data as at 20 April. Includes all participants regardless of residence type.

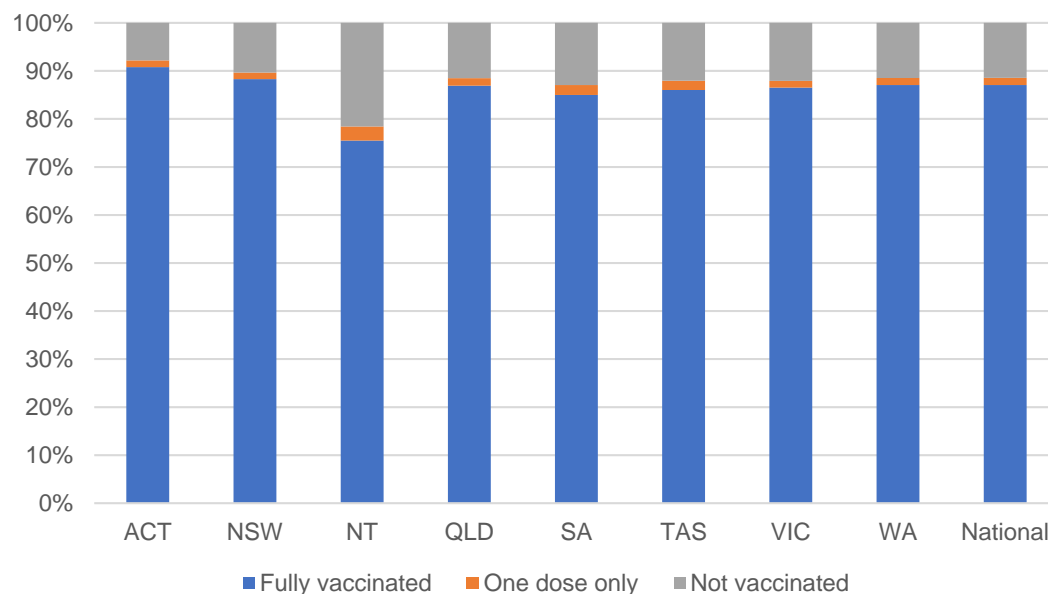
National Disability Insurance Scheme (NDIS) reported vaccinations

Data as at:
21 April 2022
Updated Weekly

Australia's COVID-19
Vaccine Roadmap

NATIONAL	Total people with at least one dose	People fully vaccinated	Total number of individuals in cohort	% People with at least one dose	% People fully vaccinated
NDIS participants living in disability accommodation	20,728	20,385	23,352	88.8%	87.3%

NDIS participants in disability and aged care accommodation



Source: Linkage between National Disability Insurance Agency data and the Australian Immunisation Register. Includes participants residing in disability accommodation only.
Source: Total NDIS participant numbers as at 28 February. Participant data as at 20 April. Australian Immunisation Register data as at 20 April. Worker data as at 20 April.

NDIS workforce vaccinations

	NDIS workers with at least one dose	NDIS workers fully vaccinated	% NDIS workers with at least one dose	% NDIS workers fully vaccinated
NSW	121,789	117,641	98.3%	94.9%
VIC	116,587	112,526	98.3%	94.9%
QLD	69,618	68,740	97.6%	96.4%
WA	32,967	31,161	98.6%	93.2%
SA	35,627	32,670	98.4%	90.2%
TAS	10,701	10,429	99.7%	97.2%
ACT	3,506	3,462	98.3%	97.1%
NT	3,445	3,284	99.4%	94.8%
TOTAL	394,240	379,913	98.3%	94.7%

Source: the NDIS Commission has established a requirement for registered NDIS providers who provide intensive disability support services to report on the vaccination status of workers they employ, or otherwise engage, to deliver NDIS-funded supports and services, and who are required to be vaccinated in accordance with in-force state and territory public health orders. The statistics reflect data reported to the NDIS Commission by registered NDIS providers and should be considered indicative and subject to change

Note: Some registered NDIS providers are yet to report on the vaccination status of their workforce. The NDIS Commission is working with those providers around reporting requirements.

Remaining workers not included include those exempt from vaccination requirements, workers whose vaccination status is not yet verified by the provider (such as workers on leave) and provider reporting anomalies.

Residential aged care vaccination rollout

Residential aged care facilities status

171,753 **173,554**

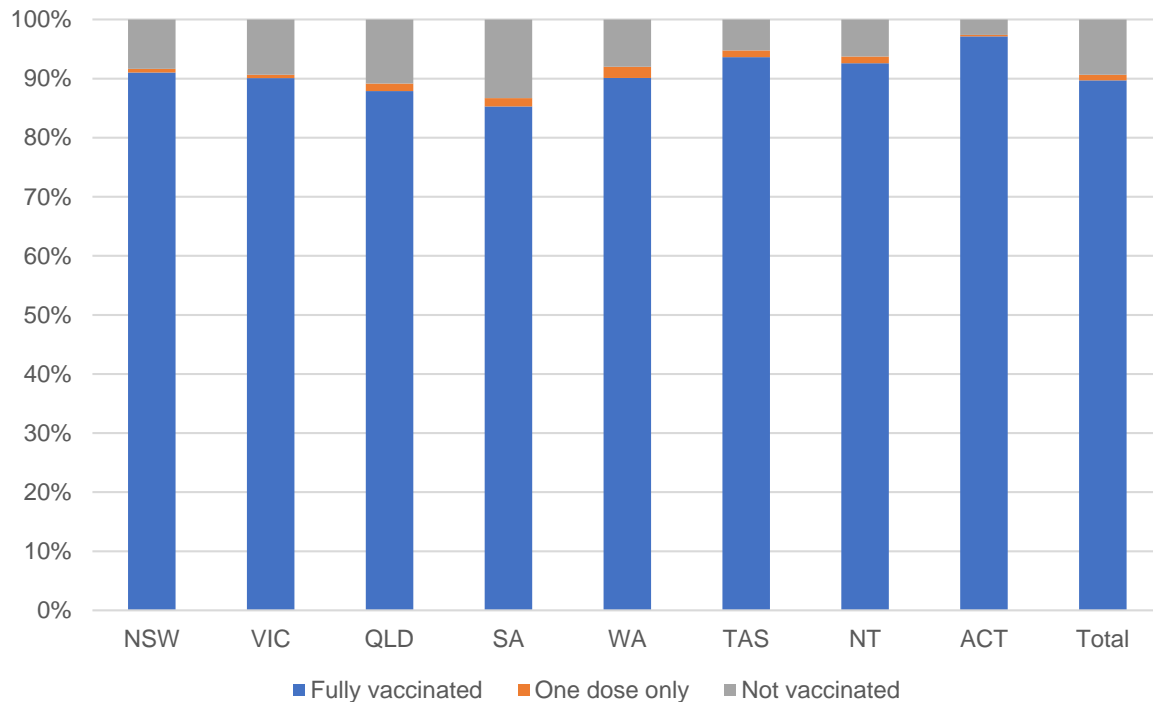
People fully vaccinated

People with at least one dose

Australia's COVID-19 Vaccine Roadmap

Data as at:
21 Apr 2022
Updated weekly

Aged care resident vaccinations



Aged care worker vaccinations

Jurisdictions	Total workers with at least one dose	Workers fully vaccinated	% Workers with at least one dose	% Workers fully vaccinated
NSW	75,435	75,430	96.7%	96.7%
VIC	65,033	65,029	91.5%	91.5%
QLD	46,146	46,140	95.7%	95.7%
SA	26,415	26,398	96.8%	96.8%
WA	24,070	24,068	99.4%	99.4%
TAS	7,561	7,559	100.0%	100.0%
NT	881	881	100.0%	100.0%
ACT	2,976	2,976	100.0%	100.0%
Total	248,517	248,481	95.5%	95.5%

Source: My Aged Care Portal vaccination progress

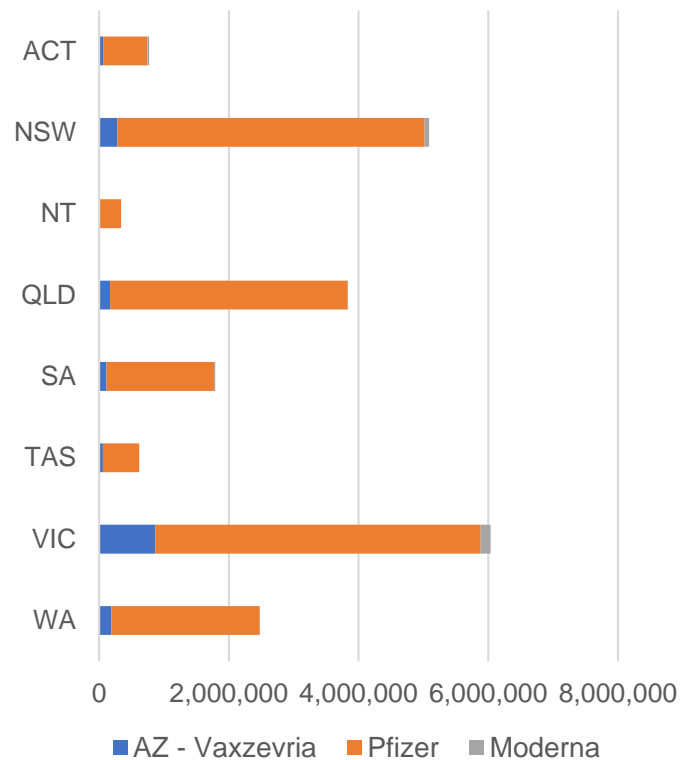
*Status updates are provided by facilities at least once per week. Reporting is updated Monday to Friday to encompass different facility updates being made on different days.

Data is sourced directly from Aged Care Service Providers and is not drawn or closely aligned with data from AIR due to inconsistencies and potential lags in uploading of records.

Data as at:
21 Apr 2022

Jurisdiction administered

Total vaccine doses administered in State and Territory clinics as at 21 April



20,956,157 total vaccine doses administered in State and Territory clinics as at 21 April
 + **12,200** recorded in the last 24 hours
 + **45,803** recorded in the last 7 days

NSW
5,088,686
 (+1,653 daily increase)

VIC
6,039,434
 (+3,305 daily increase)

QLD
3,831,834
 (+850 daily increase)

WA
2,479,138
 (+1,970 daily increase)

TAS
617,939
 (+419 daily increase)

SA
1,791,973
 (+1,420 daily increase)

ACT
771,445
 (+1,186 daily increase)

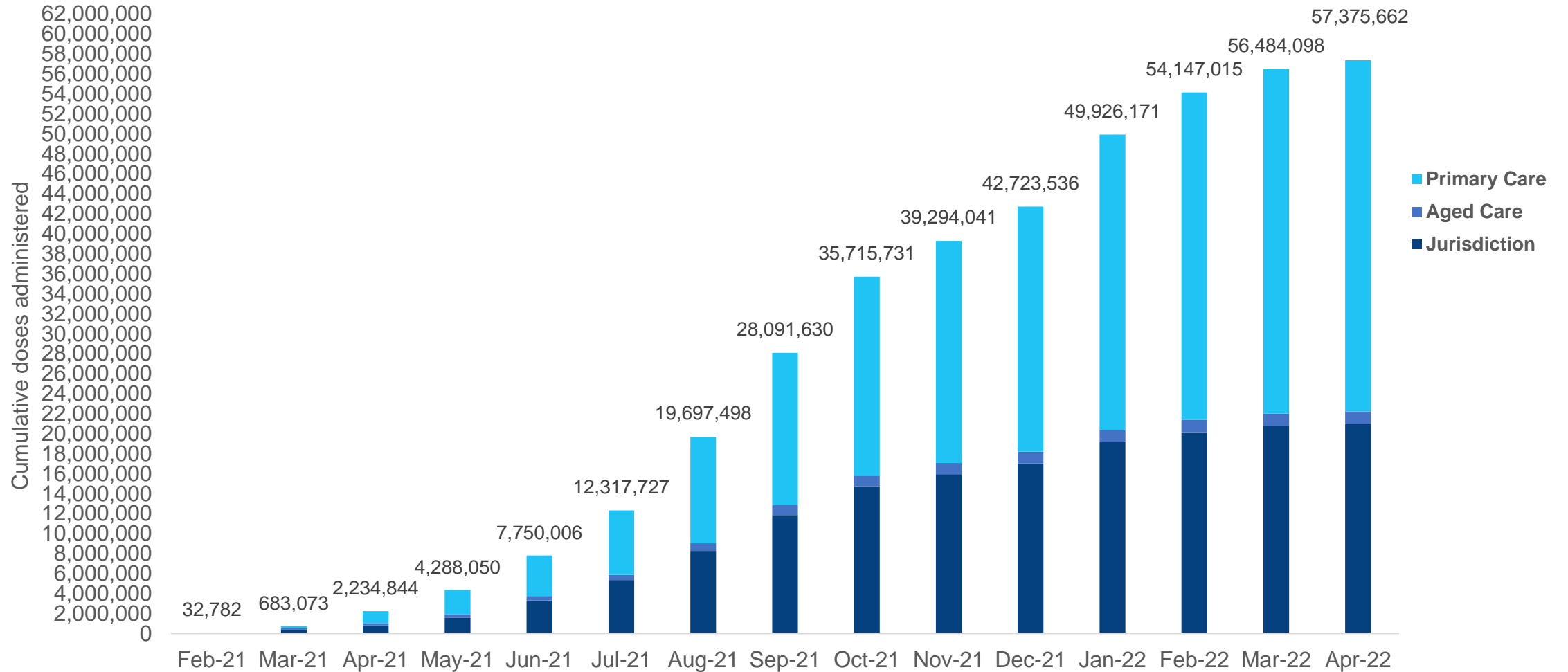
NT
335,708
 (+1,397 daily increase)

*Sourced from the Australian Immunisation Register. Numbers are calculated as difference in daily cumulative reported numbers to allow for historical corrections.

Source: Australian Immunisation Register

Data as at:
21 Apr 2022

Cumulative doses administered by channel



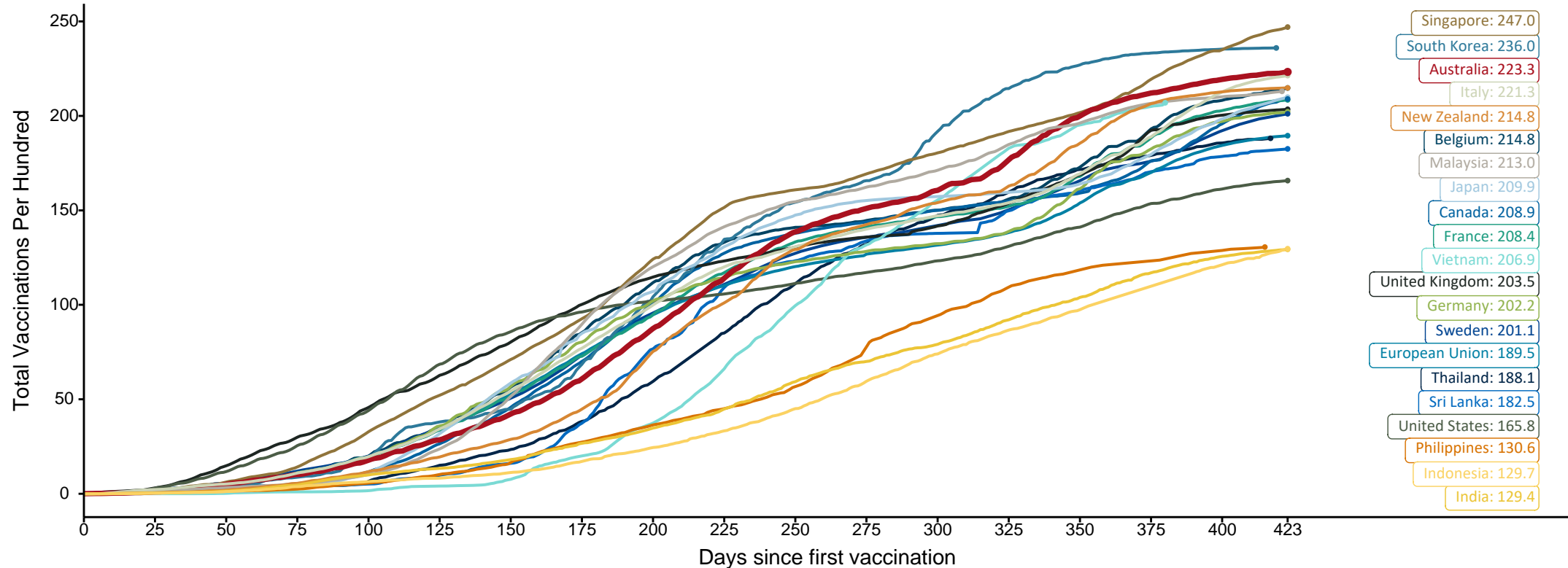
Source: Australian Immunisation Register

Doses at equivalent stages of rollout (Day 423)

Data as at:
21 Apr 2022

The x-axis is truncated at the length of Australia's vaccination program. Countries with intermittent reporting have had their doses per 100 imputed to Australia's current stage of rollout. Israel excluded as it is beyond scale of the graph

Cumulative doses administered (21 Apr): **57,375,662**

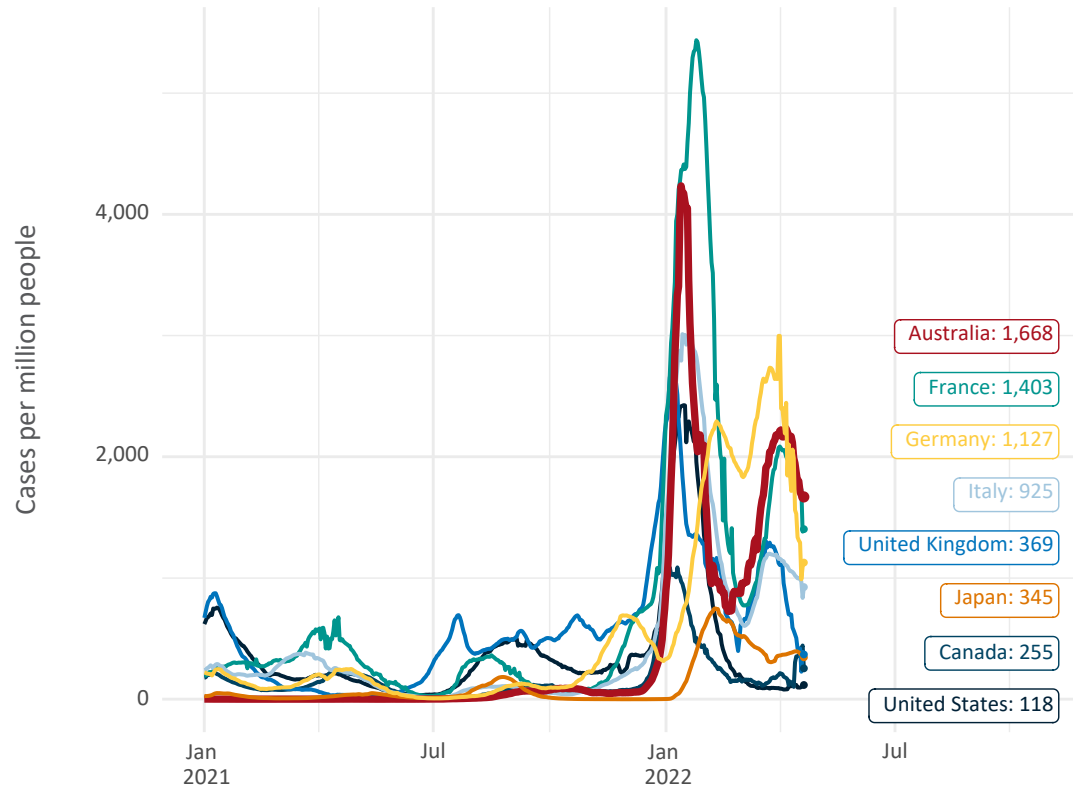


Note: From 11 January 2022, data for Australia includes all doses administered to people 5 and over. Prior to 11 January, data was for 12 and over.
Source: Department of Health (Australia), Our World in Data (international)
Latest data: 21 April

Data as at:
21 Apr 2022

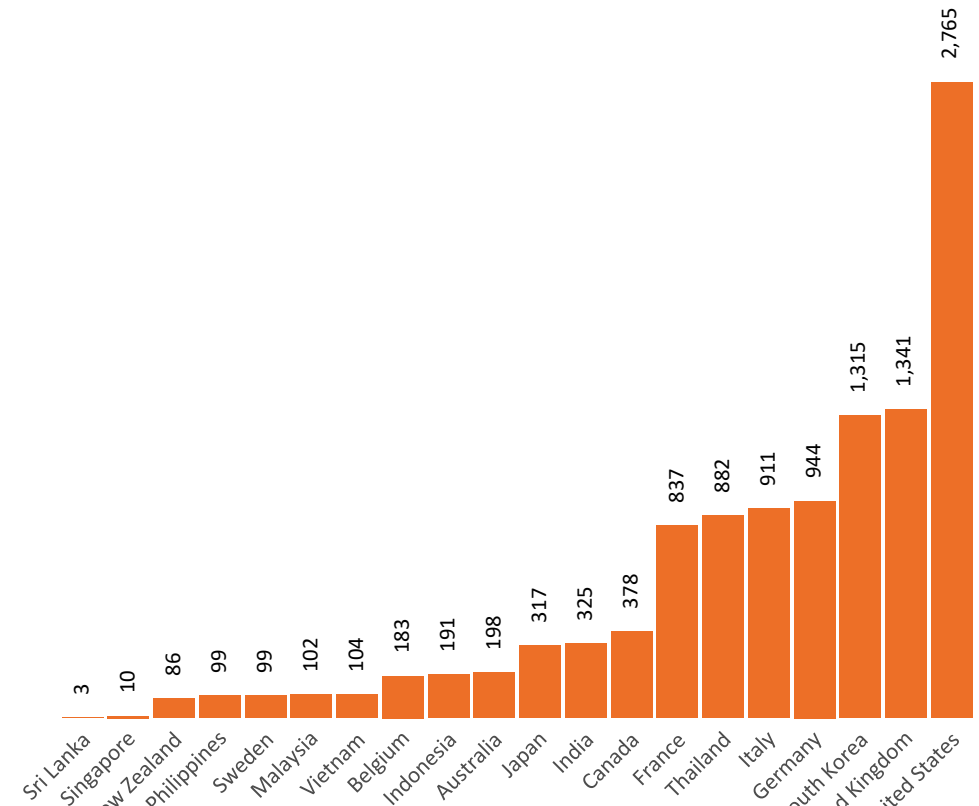
International data – COVID-19

New daily cases per million in 2021, Australia and G7 countries
Smoothed - 7 day average



Source: OWID
Data downloaded: 22 Apr 2022 10:00
Latest data: 20 Apr 2022

COVID-19 deaths in past 7 days - Australia and select countries



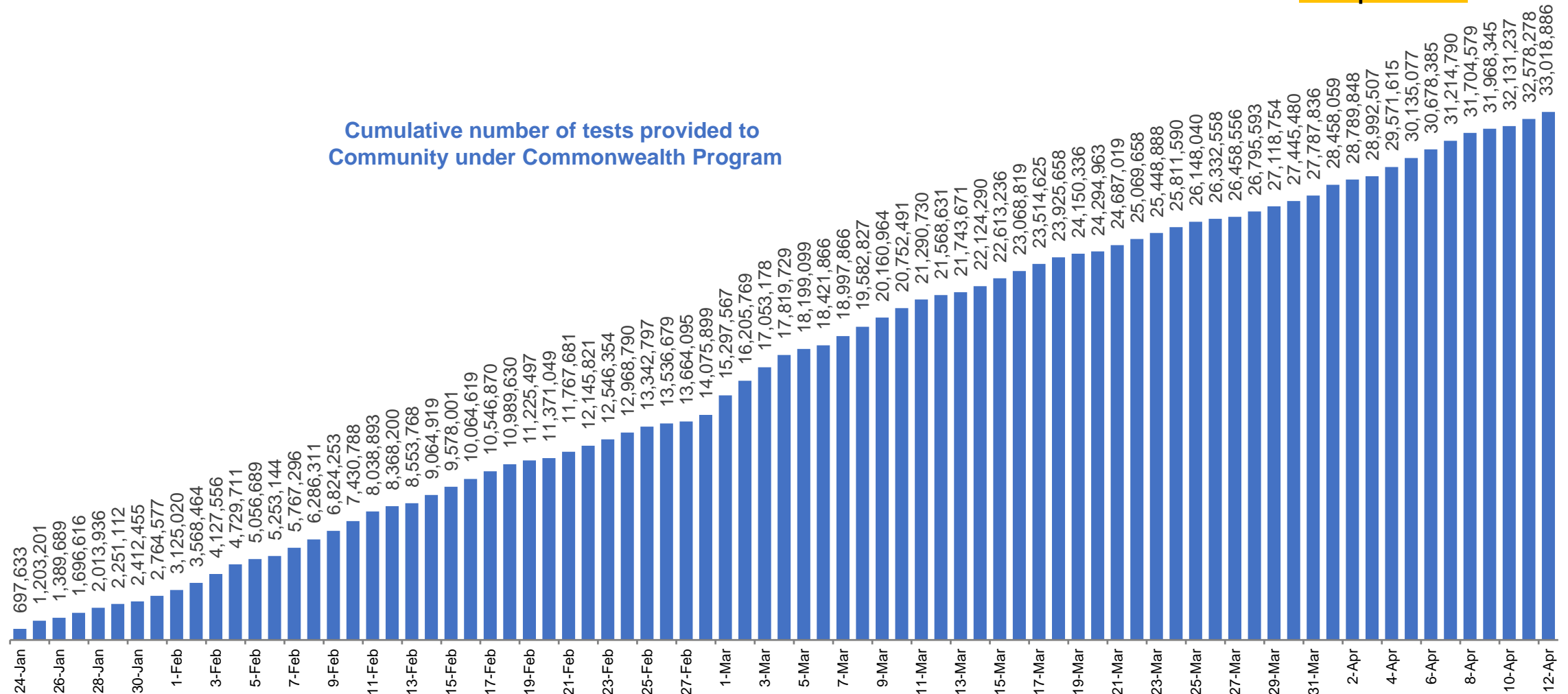
Source: OWID
Data downloaded: 22 Apr 2022 10:00
Latest data: 20 Apr 2022

Data as at
14 April 2022

Concessional rapid antigen test program


5,637 pharmacies have delivered over 33.0 million rapid antigen tests to more than 4.6m eligible concession card holders under the Government's concessional rapid antigen test program.

Cumulative number of tests provided to
Community under Commonwealth Program



Pandemic Response Payments

Data as at midnight: 17 Apr 2022
Updated weekly



2.38 million
People have received at least one COVID Disaster Payment (including ISP200)

\$14.22 billion
Paid Out as at 17 Apr 2022

7.67 million
Claims granted across three different payments



93%
of Claims Received Digitally



COVID Disaster Payment:	5.89 million claims received - 2.19 million individuals paid a total of \$12.59 billion.
\$200 Income Support Payment:	353,000 claims received - 183,000 individuals paid a total of \$268.9 million.
Pandemic Leave Disaster Payment:	1.92 million claims received - 1.18 million individuals paid a total of \$1.35 billion.



THREE PAYMENTS AVAILABLE

COVID Disaster Payment

assisting during a lockdown event in a Commonwealth hotspot.

Income Support Payment \$200

for income support recipients who lost at least 8 hours of work.

Pandemic Leave Disaster Payment

for those who have to self-isolate, quarantine or care.

For more information visit: servicesaustralia.gov.au

COVID-19 DISASTER PAYMENTS

Northern Territory
Lockdown (#3) from 16 Nov to 22 Nov
Claiming period ended 27 Dec

7,500 people have received at least one COVID Disaster Payment.

\$6.9m paid out as at 17 Apr 2022.

Nil paid in initial payments in the week ending 17 Apr 2022.

Cumulative payments made by Territory since activation on 25 Aug 2021.



Date	Cumulative Payments
20 Mar	\$6.9m
27 Mar	\$6.9m
3 Apr	\$6.9m
10 Apr	\$6.9m
17 Apr	\$6.9m

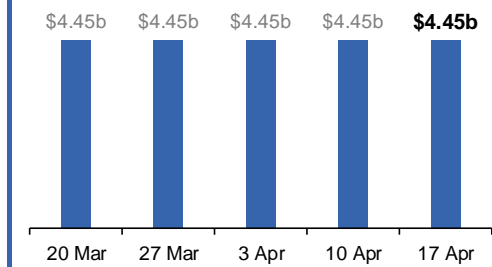
Victoria
Lockdown (#6) from 6 Aug to 28 Oct
Claiming period ended 9 Dec

745,000 people have received at least one COVID Disaster Payment.

\$4.45b paid out as at 17 Apr 2022.

Nil paid in initial and reoccurring payments in the week ending 17 Apr 2022.

Cumulative payments made by State since activation on 8 Jun 2021.



Date	Cumulative Payments
20 Mar	\$4.45b
27 Mar	\$4.45b
3 Apr	\$4.45b
10 Apr	\$4.45b
17 Apr	\$4.45b

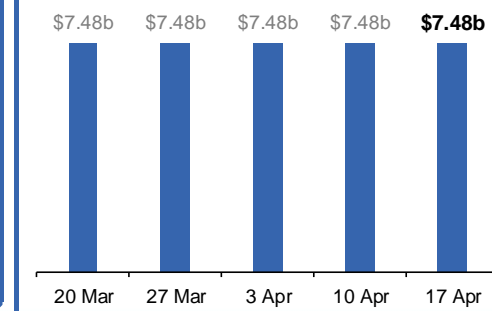
New South Wales
Lockdown from 24 Jun to 10 Oct
Claiming period ended 27 Nov

1.08m people have received at least one COVID Disaster Payment.

\$7.48b paid out as at 17 Apr 2022.

Nil paid in initial and reoccurring payments in the week ending 17 Apr 2022.

Cumulative payments made by State since activation on 1 Jul 2021.



Date	Cumulative Payments
20 Mar	\$7.48b
27 Mar	\$7.48b
3 Apr	\$7.48b
10 Apr	\$7.48b
17 Apr	\$7.48b

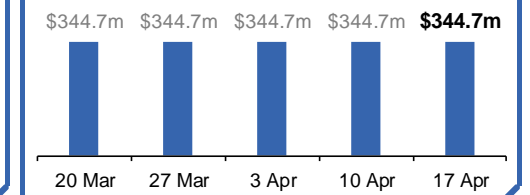
Australian Capital Territory
Lockdown from 12 Aug to 14 Oct
Claiming period ended 25 Nov

65,000 people have received at least one COVID Disaster Payment.

\$344.7m paid out as at 17 Apr 2022.

Nil paid in initial and reoccurring payments in the week ending 17 Apr 2022.

Cumulative payments made by Territory since activation on 20 Aug 2021.



Date	Cumulative Payments
20 Mar	\$344.7m
27 Mar	\$344.7m
3 Apr	\$344.7m
10 Apr	\$344.7m
17 Apr	\$344.7m

Pandemic Response Payments (continued)

Data as at midnight: 17 Apr 2022
Updated weekly

COVID-19 DISASTER PAYMENTS

