



Australian Government
Operation COVID Shield

COVID-19 Vaccine Roll-out

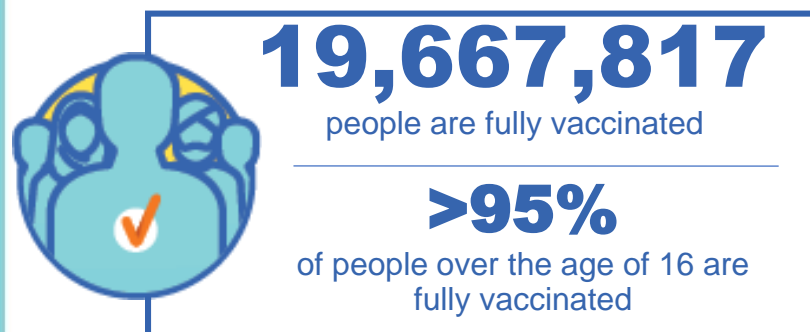
21 April 2022

Data as at:
20 Apr 2022

Total vaccine doses



57,310,726 total vaccine
doses administered nationally as at 20 April
+63,946 recorded in the last 24 hours



*Administration state breakdown indicates state in which a vaccine was administered

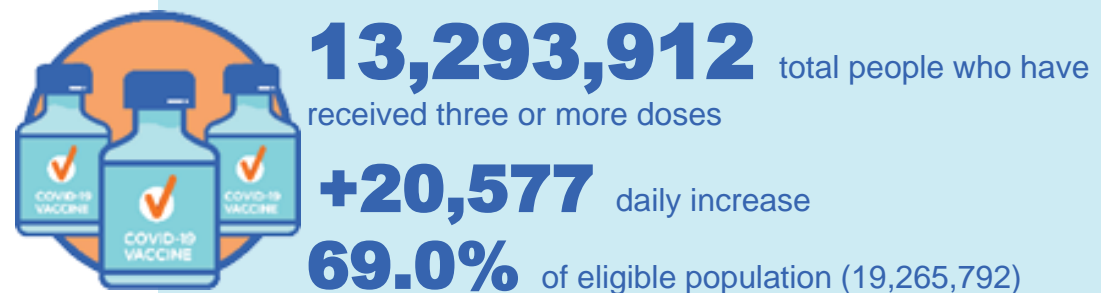
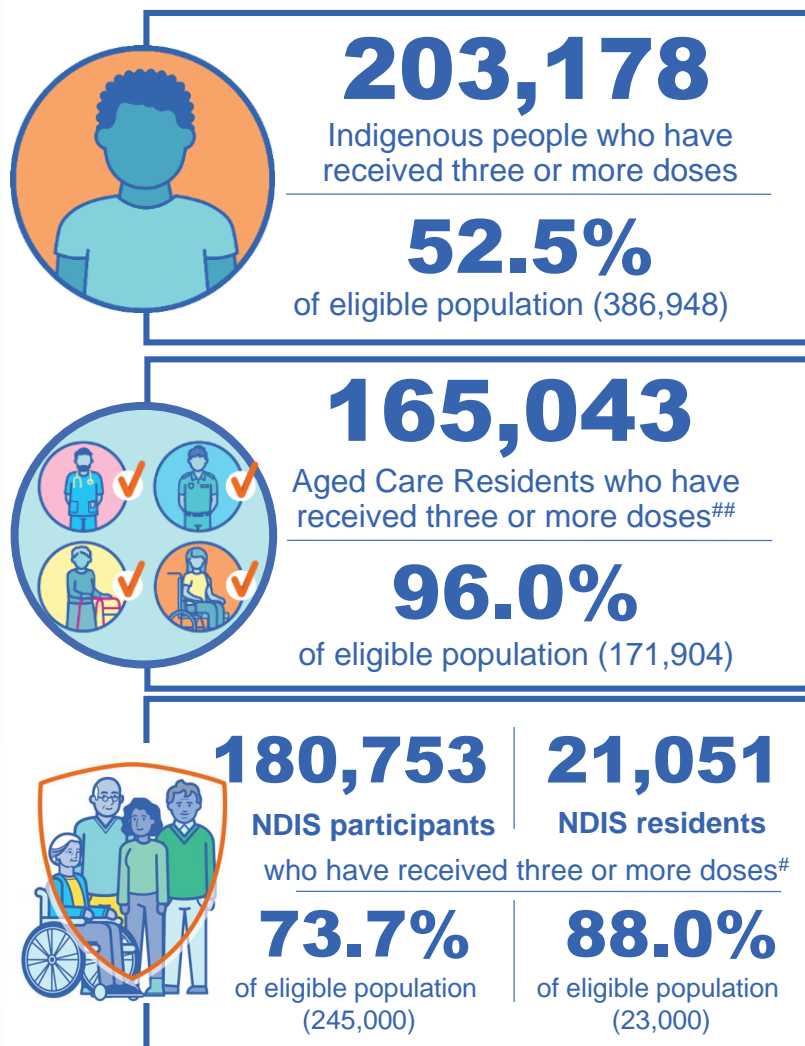
**Overall dose count includes instances of more than three doses per person in a small number of cases.

Source: Australian Immunisation Register

Booster Vaccinations

Australia's COVID-19
Vaccine Roadmap

Data as at:
20 Apr 2022



	Number of People	Daily Increase	% of Eligible
NSW	4,067,388	5,288	65.8%
VIC	3,568,249	4,334	70.9%
QLD	2,302,365	3,562	62.5%
WA	1,616,754	3,600	85.4%
SA	941,161	1,484	72.2%
TAS	303,123	544	71.7%
ACT	264,301	293	76.7%
NT	119,473	1,307	72.8%

*People may belong to multiple groups and could be represented in the above breakdowns multiple times.
NDIS participants data as at 19 April 2022. ## Aged Care Residents data as at 20 April 2022.

Source: Australian Immunisation Register

111,098 doses administered to persons residing in other territories or with missing residential information

Winter / Fourth Doses

Data as at:
18 Apr 2022
Updated weekly

Australia's COVID-19
Vaccine Roadmap



215,070 total people (16+) who have received four or more doses

+52,590 weekly increase

	Number of People 16+	Weekly Increase
ACT	6,722	1,571
NSW	79,715	18,038
NT	1,705	258
QLD	37,432	10,443
SA	13,481	3,569
TAS	5,635	1,658
VIC	53,732	13,097
WA	15,482	3,673

1,166 doses administered to persons
residing in other territories or with
missing residential information

*People may belong to multiple groups and could be represented in the above breakdowns multiple times.

Source: Australian Immunisation Register

Vaccinations by residential location

Australia's COVID-19 Vaccine Roadmap

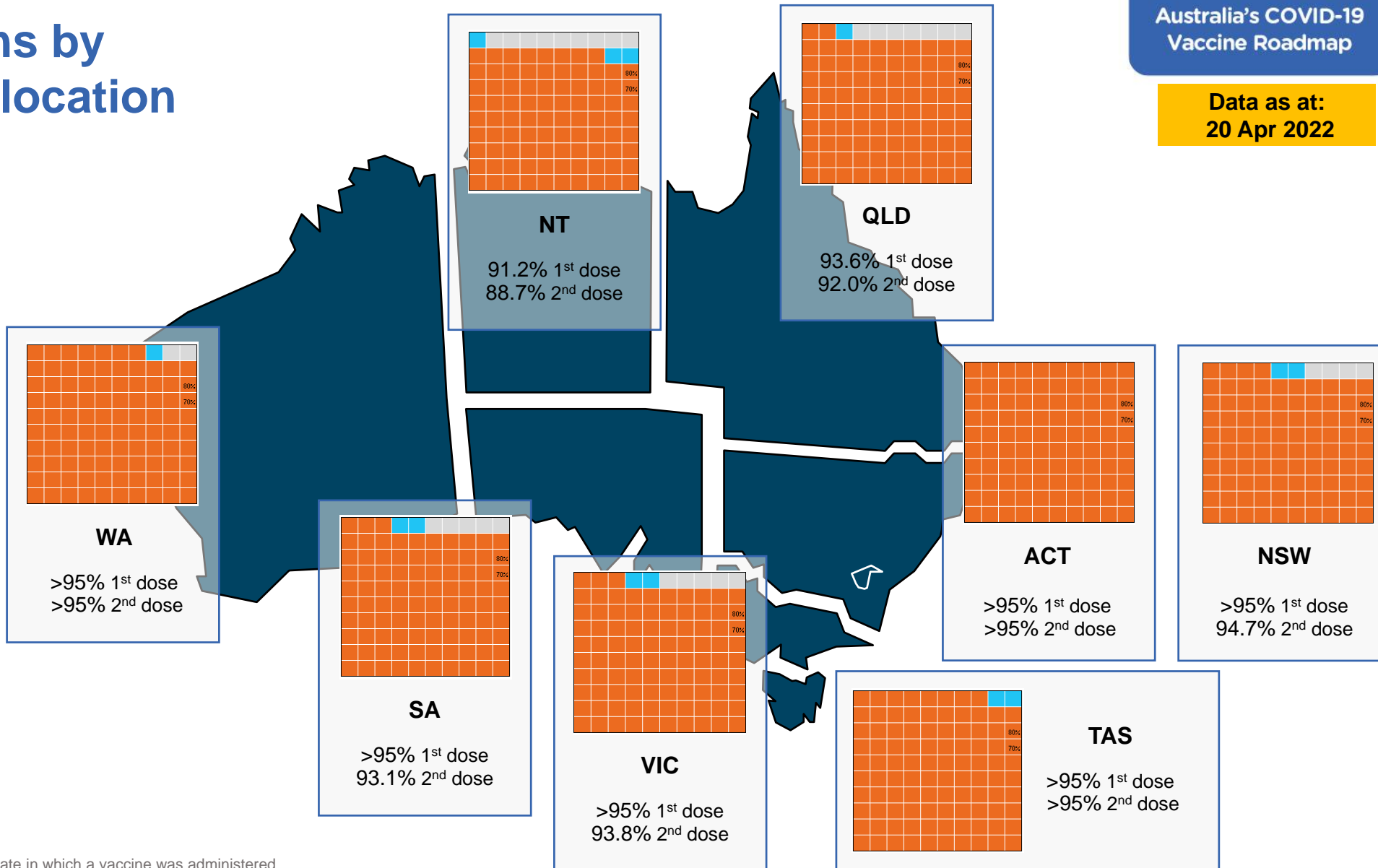
Data as at:
20 Apr 2022

First doses

Age	Today	4 weeks ago	8 weeks ago
16+	>95%	>95%	>95%
50+	>95%	>95%	>95%
70+	>95%	>95%	>95%

Fully vaccinated

Age	Today	4 weeks ago	8 weeks ago
16+	>95%	>95%	94.7%
50+	>95%	>95%	>95%
70+	>95%	>95%	>95%



*Residential state may differ from the state in which a vaccine was administered

Commonwealth and Jurisdiction vaccine doses administered

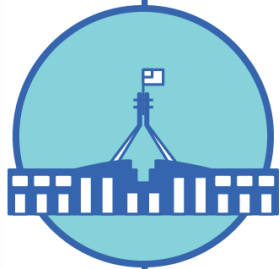
Data as at:
20 Apr 2022



57,310,726 total vaccine
doses administered nationally as at 20 April
+ 63,946 recorded in the last 24 hours



20,943,957
doses administered by state
and territory facilities
+ 12,091
recorded in the last 24 hours



36,366,769
doses administered by
commonwealth facilities
+ 51,855
recorded in the last 24 hours

35,095,292 total vaccine doses
administered in primary care settings
1,271,477 total vaccine doses
administered in aged care and disability
settings

NSW	Jurisdictions	Commonwealth
Cumulative	5,087,033	12,697,949
Daily increase	1,634	15,032

VIC	Jurisdictions	Commonwealth
Cumulative	6,036,129	9,048,900
Daily increase	3,378	12,109

QLD	Jurisdictions	Commonwealth
Cumulative	3,830,984	7,021,450
Daily increase	1,054	10,688

WA	Jurisdictions	Commonwealth
Cumulative	2,477,168	3,813,747
Daily increase	1,780	7,680

TAS	Jurisdictions	Commonwealth
Cumulative	617,520	672,164
Daily increase	377	1,217

SA	Jurisdictions	Commonwealth
Cumulative	1,790,553	2,158,160
Daily increase	1,343	3,326

ACT	Jurisdictions	Commonwealth
Cumulative	770,259	721,042
Daily increase	1,289	1,093

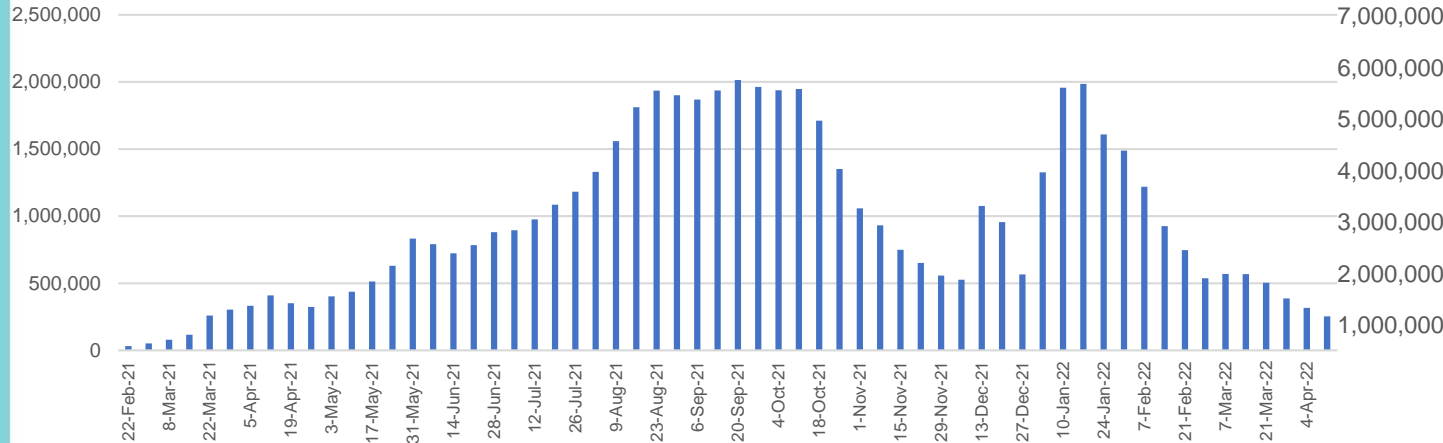
NT	Jurisdictions	Commonwealth
Cumulative	334,311	233,357
Daily increase	1,236	710

Vaccine milestone charts

Data as at:
20 Apr 2022

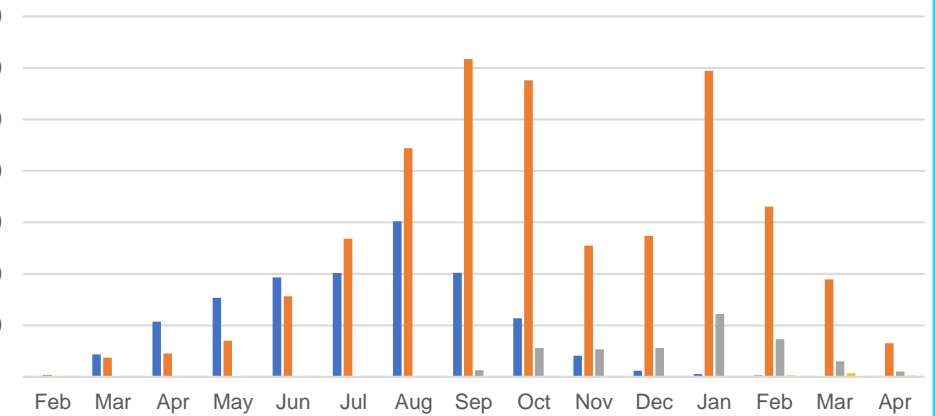
Australia's COVID-19
Vaccine Roadmap

Doses Administered by Week

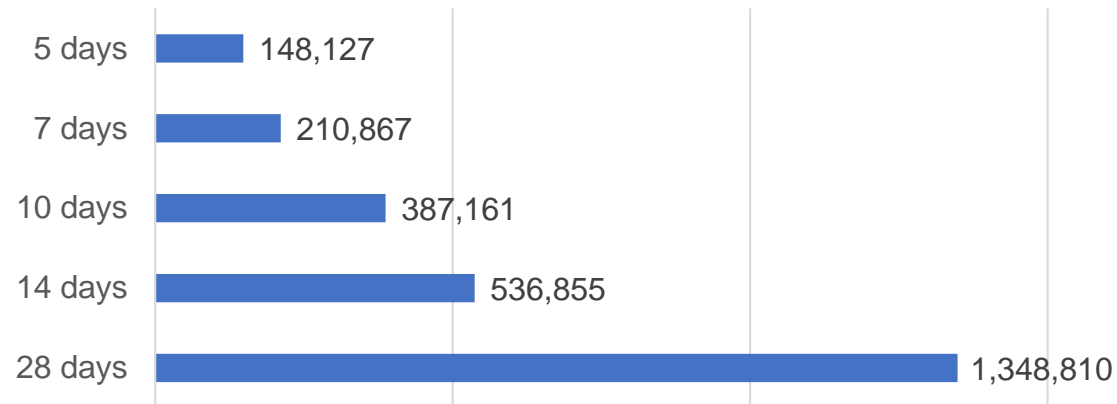


Doses by administration month and vaccine type

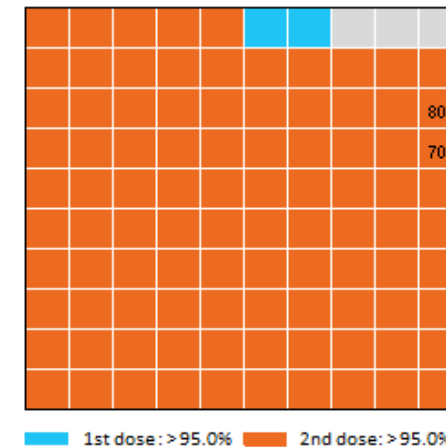
AZ - Vaxzevria Pfizer Moderna Novavax



Doses Reported



Eligible population percentage coverage



*Each square represents 1% of the national population.
Squares are filled as milestones are achieved.

*Sourced from the Australian Immunisation Register.

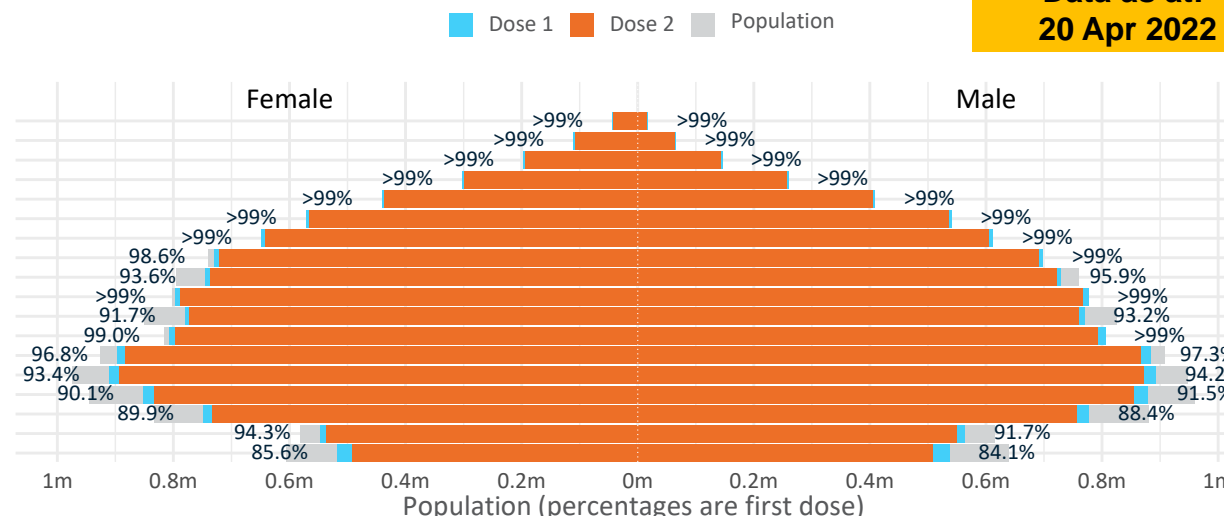
Doses by age and sex

First and second doses by age and sex

Australia's COVID-19
Vaccine Roadmap

Data as at:
20 Apr 2022

Age	Dose 1	Dose 2
95+	61,566 (>99%)	58,168 (>99%)
90-94	176,646 (>99%)	170,968 (>99%)
85-89	343,024 (>99%)	335,961 (>99%)
80-84	562,794 (>99%)	555,414 (>99%)
75-79	850,404 (>99%)	841,943 (>99%)
70-74	1,113,686 (>99%)	1,102,698 (>99%)
65-69	1,262,382 (>99%)	1,248,124 (>99%)
60-64	1,429,007 (>99%)	1,412,772 (98.3%)
55-59	1,475,496 (94.8%)	1,458,938 (93.8%)
50-54	1,574,947 (>99%)	1,557,772 (>99%)
45-49	1,551,896 (92.6%)	1,532,968 (91.4%)
40-44	1,615,126 (>99%)	1,590,677 (98.2%)
35-39	1,786,108 (97.3%)	1,753,755 (95.6%)
30-34	1,813,057 (94.2%)	1,771,211 (92.1%)
25-29	1,741,732 (91.4%)	1,694,375 (88.9%)
20-24	1,532,937 (89.5%)	1,493,607 (87.2%)
16-19	1,112,690 (93.1%)	1,088,466 (91.0%)
12-15	1,055,686 (84.9%)	999,545 (80.3%)

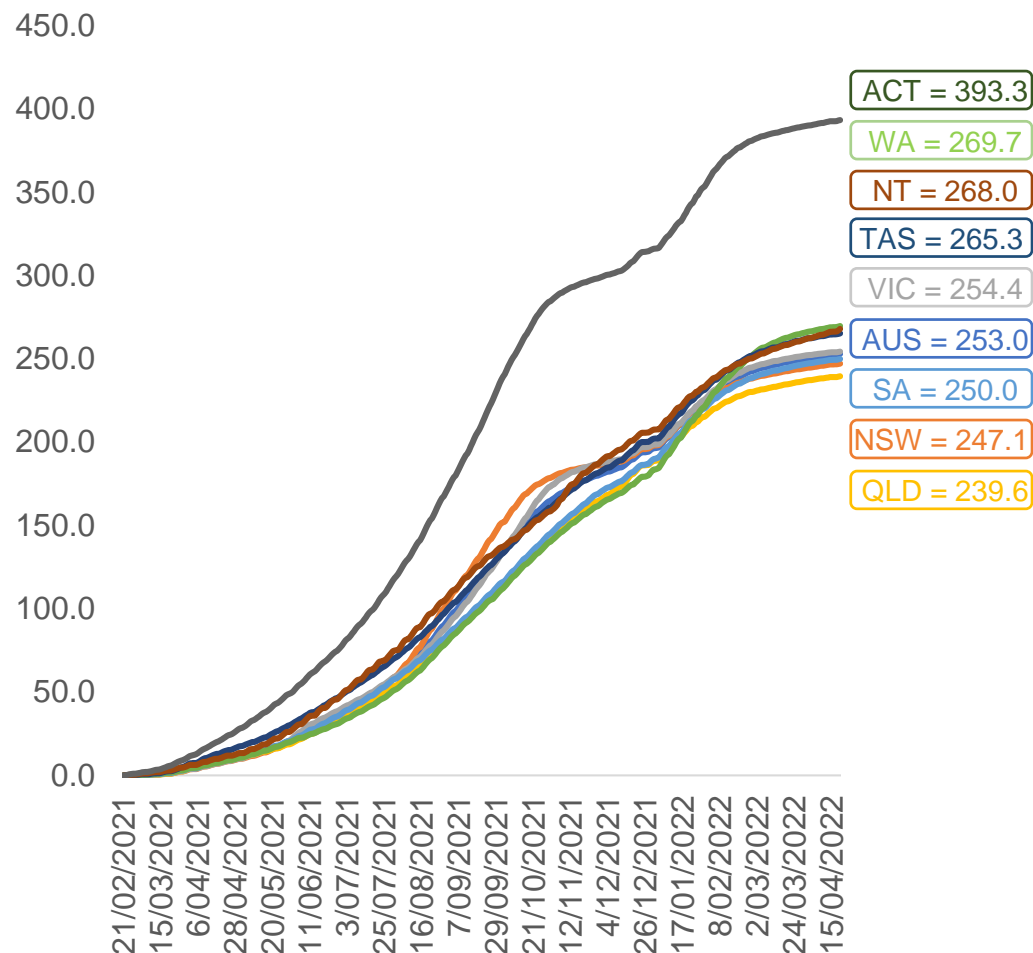


	AUS	ACT	NSW	NT	QLD	SA	TAS	VIC	WA
16 and over - dose 1	20,003,498	351,852	6,312,731	173,836	3,849,048	1,371,481	443,871	5,147,617	2,088,632
16 and over - dose 2	19,667,817	346,363	6,217,270	169,054	3,783,866	1,341,424	434,600	5,071,381	2,055,918
16 and over - population	20,619,959*	344,037	6,565,651	190,571	4,112,707	1,440,400	440,172	5,407,574	2,114,978
16 and over % with dose 1	97.01%	>99%	96.15%	91.22%	93.59%	95.22%	>99%	95.19%	98.75%
16 and over % with dose 2	95.38%	>99%	94.69%	88.71%	92.00%	93.13%	98.73%	93.78%	97.21%
5 to 11 - dose 1	1,201,147	31,913	357,679	13,227	209,526	84,293	28,819	326,697	141,148
5 to 11 - dose 2	794,690	25,043	238,443	7,560	137,712	56,548	22,012	217,796	85,581
5 to 11 - population	2,276,638	39,789	716,460	24,750	478,731	148,816	45,033	578,499	244,154
5 to 11 % with dose 1	52.76%	80.21%	49.92%	53.44%	43.77%	56.64%	64.00%	56.47%	57.81%
5 to 11 % with dose 2	34.91%	62.94%	33.28%	30.55%	28.77%	38.00%	48.88%	37.65%	35.05%
12 to 15 - dose 1	1,055,686	20,138	324,960	10,860	207,126	68,465	22,947	275,691	115,883
12 to 15 - dose 2	999,545	19,575	310,347	9,784	194,061	64,765	21,821	263,822	106,967
12 to 15 - population	1,243,990	19,693	390,330	13,060	270,146	82,747	26,308	308,611	132,869
12 to 15 % with dose 1	84.86%	>99%	83.25%	83.15%	76.67%	82.74%	87.22%	89.33%	87.22%
12 to 15 % with dose 2	80.35%	>99%	79.51%	74.92%	71.84%	78.27%	82.94%	85.49%	80.51%

*National population will not equal sum of listed jurisdictions due to a small number of people counted in national population residing in some 'other' territories. Sum of state doses will not add to national total as some records are unable to be geocoded to a State or Territory.
Doses sourced from Australian Immunisation Register, population from ABS ERP June 2020

Vaccinations by location

Cumulative total doses administered vs eligible state populations*

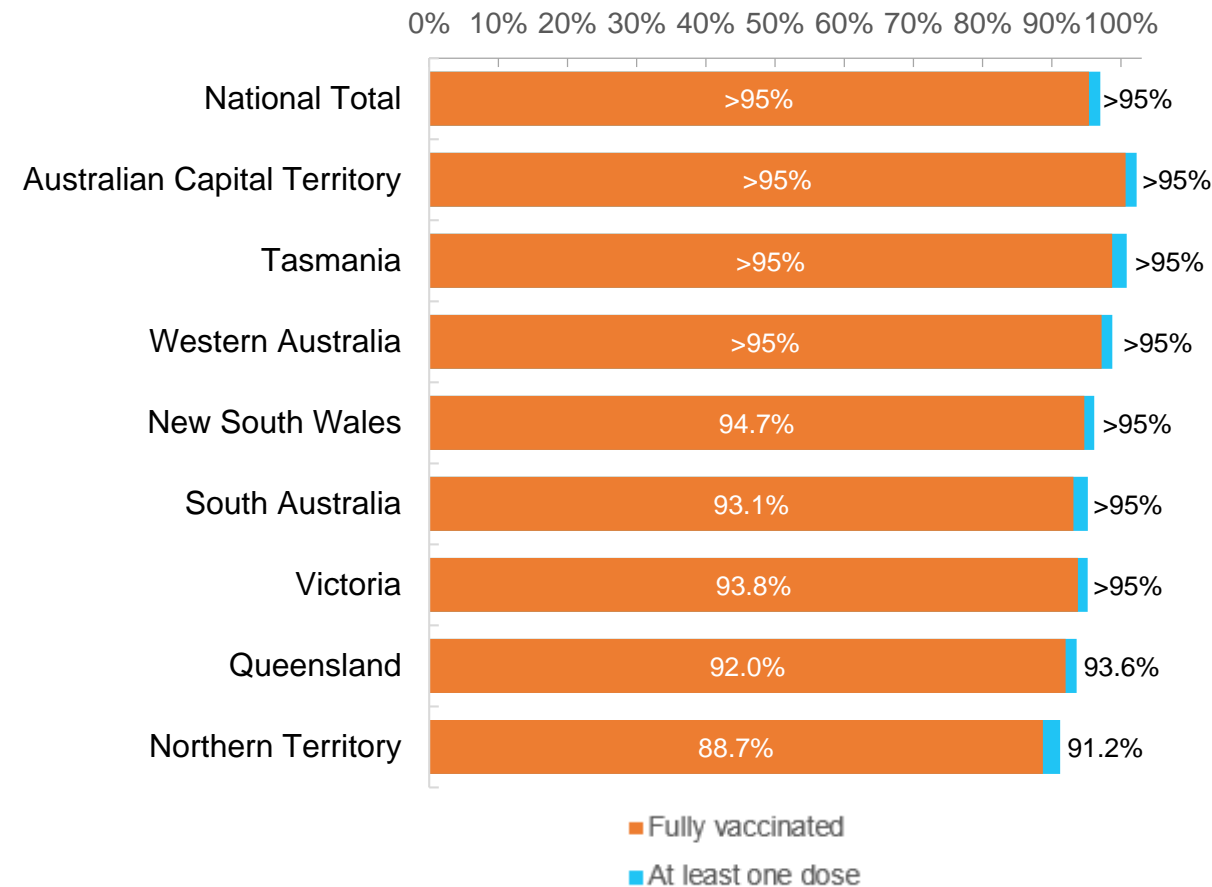


*Not an indication of percentage vaccinated, numbers will exceed 100 due to multiple doses required per person of the population. All doses are included for those aged 12 and above, and are based on vaccination provider location.

Data as at:
20 Apr 2022

Australia's COVID-19
Vaccine Roadmap

First and Second Doses by residential location



Aboriginal and Torres Strait Islander peoples

Number of people vaccinated

Data as at:
19 Apr 2022
Updated weekly

Australia's COVID-19
Vaccine Roadmap



437,863

people over the age of 16
have had at least one dose

84.4%

of people over the age of 16
have had at least one dose



417,961

people over the age of 16
are fully vaccinated

80.5%

of people over the age of 16 are
fully vaccinated



People aged 12 – 15 years

48,586

42,655

68.4%

At least one dose

60.1%

Fully vaccinated

178 Aboriginal community controlled health services (ACCHS)

0#
ACT

50
NSW

27
NT

44
QLD

12
SA

3
TAS

21
VIC

21
WA

Medicare Address State ^{##}	Individuals Dose 1	Individuals Dose 1 %	Individuals Dose 2	Individuals Dose 2 %
Australian Capital Territory	4,789	90.9%	4,671	88.7%
New South Wales	134,375	86.7%	131,225	84.7%
Northern Territory	41,690	89.5%	39,434	84.6%
Queensland	115,134	81.3%	109,485	77.3%
South Australia	19,799	79.9%	18,329	74.0%
Tasmania	13,833	88.5%	13,422	85.8%
Victoria	35,270	89.7%	34,465	87.7%
Western Australia	53,439	86.0%	49,135	79.1%
Unknown/Other Territories	19,534	68.3%	17,795	62.2%
Totals	437,863	84.4%	417,961	80.5%

Source: Australian Immunisation Register

*Identifying as Aboriginal and Torres Strait Islander is optional and the estimated population may be under reported.

**Includes all Aboriginal and Torres Strait Islander peoples who have received a vaccination, not limited to those administered in an ACCHS setting

##ACCHS in the ACT are currently operating as a Commonwealth Vaccine Clinics so not included to avoid double counting

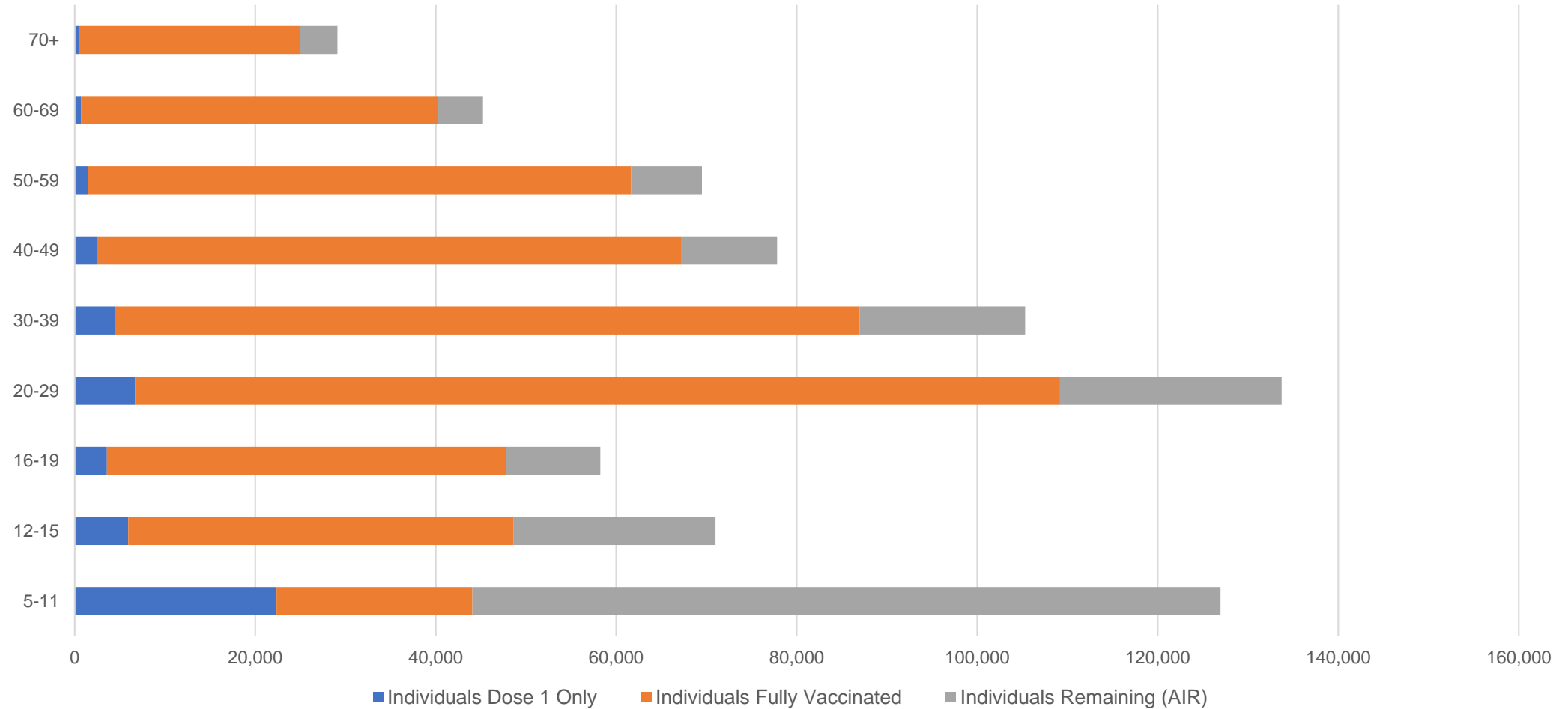
##The above table includes all identified Aboriginal and Torres Strait Islander people who are aged 16 and above by their state of residence.

Aboriginal and Torres Strait Islander peoples

Number of people vaccinated by age

Data as at:
19 Apr 2022
Updated weekly

Australia's COVID-19
Vaccine Roadmap



Source: Australian Immunisation Register

Commonwealth primary care

Data as at:
20 Apr 2022

Australia's COVID-19
Vaccine Roadmap



Primary care vaccine administration sites

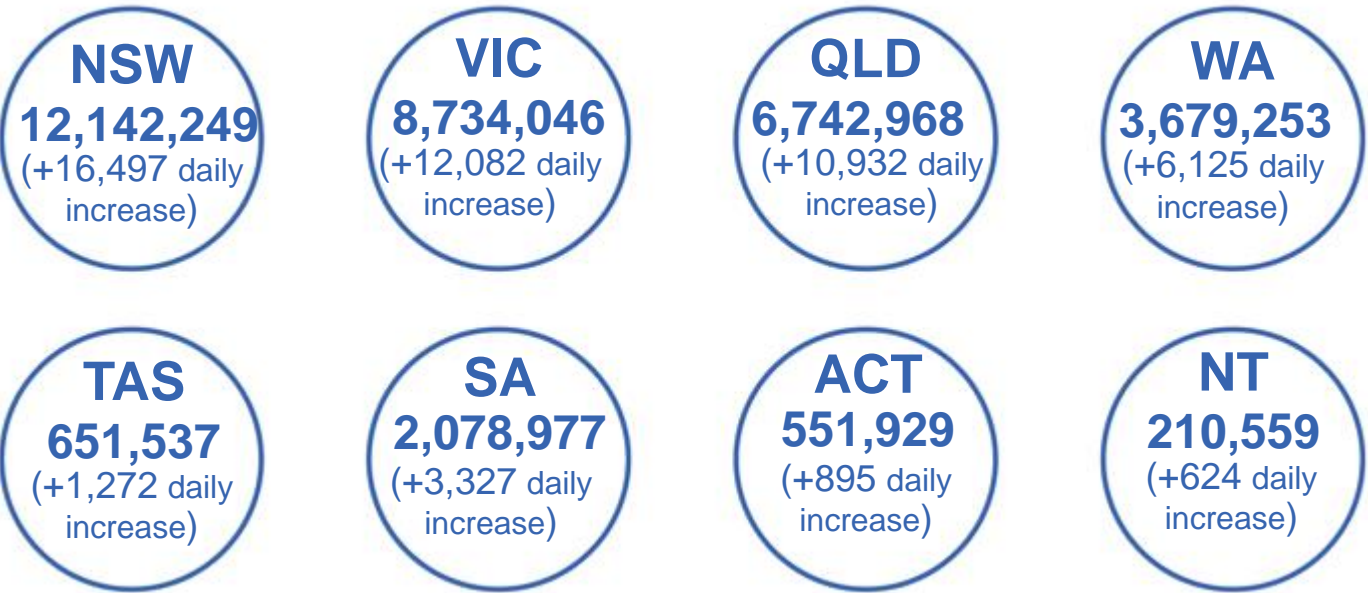
5,793	128	178	3,598
GPs	CVCs	ACCHS	Pharmacies



35,095,292 total vaccine doses administered
primary care settings as at 20 April
+ 51,406 recorded in the last 24 hours

Primary care vaccinations by provider type

	Doses administered	Daily increase	7 day increase
General Practice* includes other Commonwealth	28,279,544	34,599	105,632
Pharmacy	6,815,748	16,807	57,196



303,774

doses administered to persons
residing in other territories or with
missing residential information

*General practice includes Commonwealth Vaccination Clinics, Aboriginal Community Health Centres, Royal Flying Doctor Service and other Commonwealth vaccination facilities

Source: Australian Immunisation Register

Data as at:
20 Apr 2022

Commonwealth aged care and disability doses administered



1,271,477 (+ 449 last 24 hours)

Total vaccine doses administered in aged care and disability facilities as at 20 April

Number of doses administered as part of the Commonwealth aged and disability care rollout

NSW
559,077
(+229 daily increase)

VIC
234,992
(+14 daily increase)

QLD
202,490
(+64 daily increase)

WA
107,578
(+63 daily increase)

TAS
22,743
(+4 daily increase)

SA
83,880
(+4 daily increase)

ACT
17,012
(+66 daily increase)

NT
7,509
(+0 daily increase)

36,196

doses administered to persons
residing in other territories or with
missing residential information

*Sourced from the Australian Immunisation Register. Includes all persons vaccinated at participating residential aged care, disability and related industry settings.

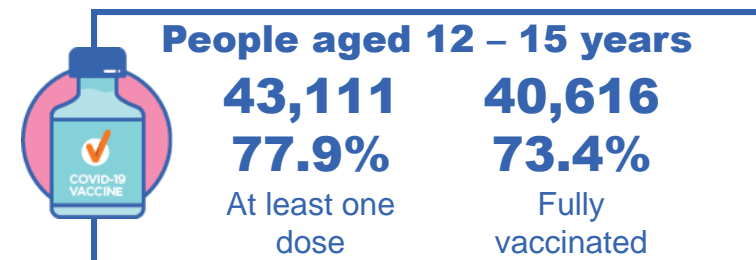
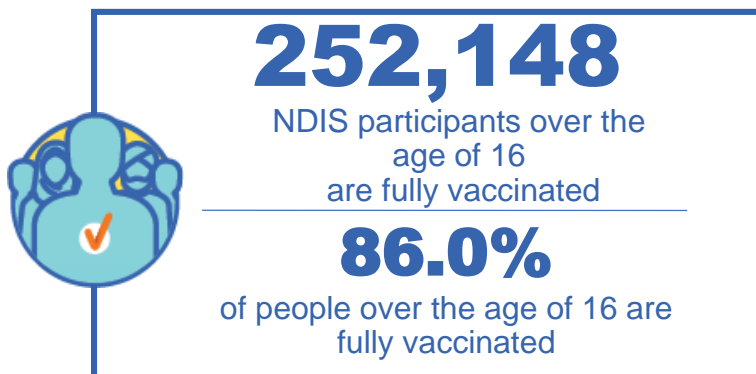
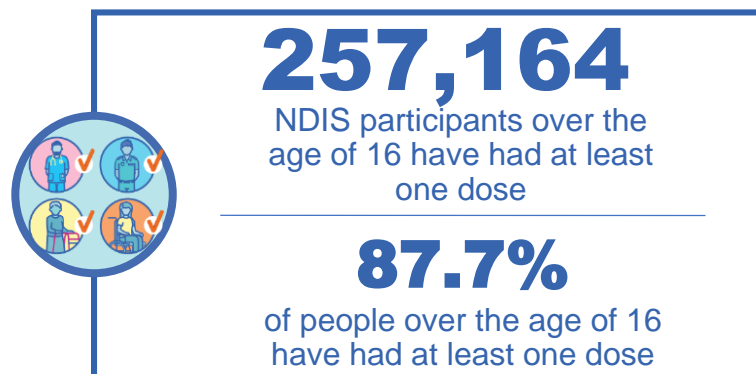
**State level breakdown indicates the residential location and may not align to the state in which the vaccination occurred.

Source: Australian Immunisation Register

National Disability Insurance Scheme (NDIS) reported vaccinations

Data as at:
14 April 2022
Updated weekly

Australia's COVID-19
Vaccine Roadmap



NDIS participant vaccinations

	People aged 16+ with at least one dose	People aged 16+ fully vaccinated	% People aged 16+ with at least one dose	% People aged 16+ fully vaccinated
ACT	4,860	4,794	89.6%	88.4%
NSW	79,019	77,712	88.1%	86.6%
NT	2,225	2,153	78.0%	75.5%
QLD	50,677	49,650	86.1%	84.4%
SA	20,982	20,441	85.5%	83.3%
TAS	6,443	6,282	87.6%	85.5%
VIC	68,437	67,206	88.9%	87.3%
WA	24,521	23,910	89.1%	86.9%
National	257,164	252,148	87.7%	86.0%

Source: Linkage between National Disability Insurance Agency data and the Australian Immunisation Register. Total NDIS participant numbers as at 28 February. Australian Immunisation Register data as at 13 April. Includes all participants regardless of residence type.

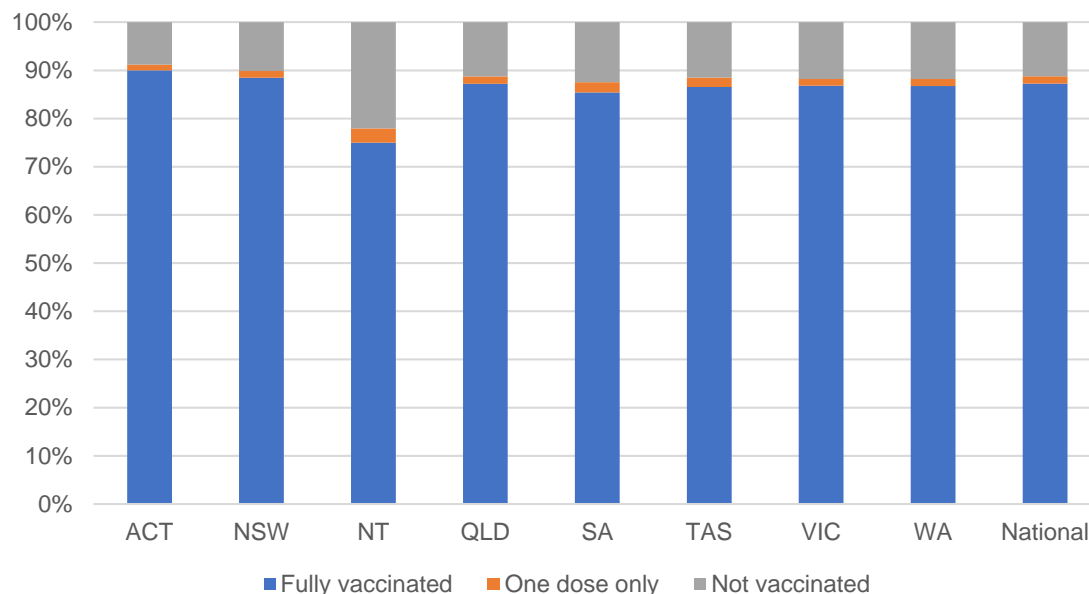
National Disability Insurance Scheme (NDIS) reported vaccinations

Data as at:
14 April 2022
Updated Weekly

Australia's COVID-19
Vaccine Roadmap

NATIONAL	Total people with at least one dose	People fully vaccinated	Total number of individuals in cohort	% People with at least one dose	% People fully vaccinated
NDIS participants living in disability accommodation	20,775	20,427	23,352	89.0%	87.5%

NDIS participants in disability and aged care accommodation



Source: Linkage between National Disability Insurance Agency data and the Australian Immunisation Register. Includes participants residing in disability accommodation only.
Source: Total NDIS participant numbers as at 28 February. Participant data as at 13 April. Australian Immunisation Register data as at 13 April. Worker data as at 12 April.

NDIS workforce vaccinations

	NDIS workers with at least one dose	NDIS workers fully vaccinated	% NDIS workers with at least one dose	% NDIS workers fully vaccinated
NSW	121,655	117,549	98.2%	94.9%
VIC	116,430	112,564	98.3%	95.1%
QLD	69,510	68,675	97.5%	96.3%
WA	32,953	31,252	98.5%	93.5%
SA	35,614	32,531	98.3%	89.8%
TAS	10,709	10,402	99.7%	96.8%
ACT	3,527	3,484	99.0%	97.8%
NT	3,430	3,270	99.4%	94.8%
TOTAL	393,828	379,727	98.2%	94.7%

Source: the NDIS Commission has established a requirement for registered NDIS providers who provide intensive disability support services to report on the vaccination status of workers they employ, or otherwise engage, to deliver NDIS-funded supports and services, and who are required to be vaccinated in accordance with in-force state and territory public health orders. The statistics reflect data reported to the NDIS Commission by registered NDIS providers and should be considered indicative and subject to change

Note: Some registered NDIS providers are yet to report on the vaccination status of their workforce. The NDIS Commission is working with those providers around reporting requirements.

Remaining workers not included include those exempt from vaccination requirements, workers whose vaccination status is not yet verified by the provider (such as workers on leave) and provider reporting anomalies.

Residential aged care vaccination rollout

Residential aged care facilities status

172,894

People fully vaccinated

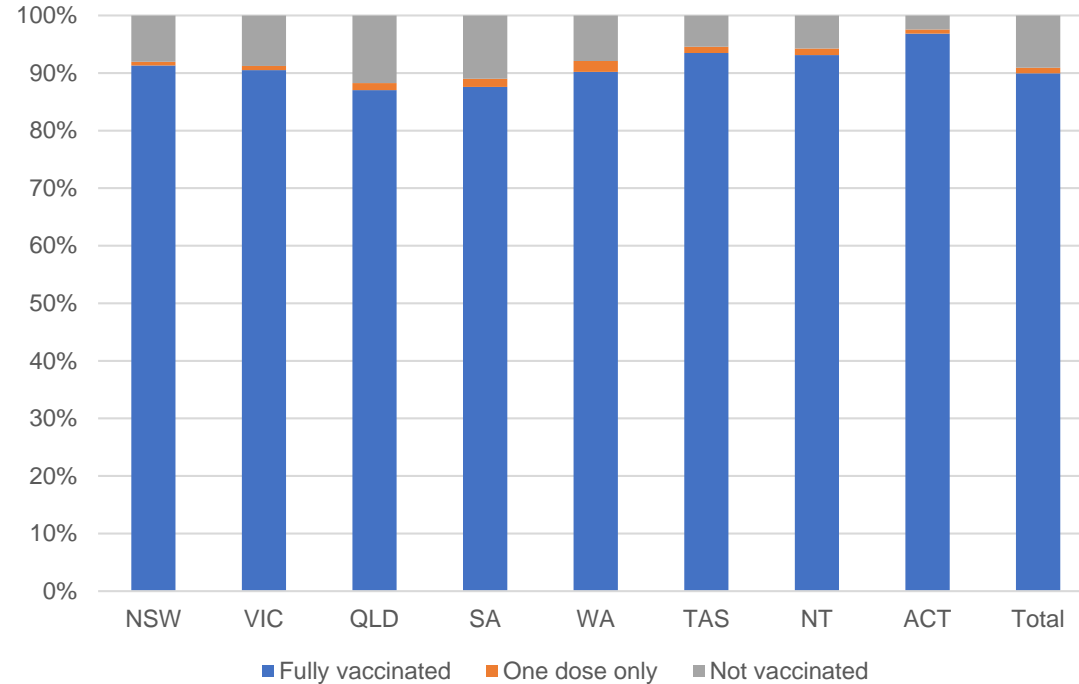
174,763

People with at least one dose

Australia's COVID-19 Vaccine Roadmap

Data as at:
14 Apr 2022
Updated weekly

Aged care resident vaccinations



Aged care worker vaccinations

Jurisdictions	Total workers with at least one dose	Workers fully vaccinated	% Workers with at least one dose	% Workers fully vaccinated
NSW	75,246	75,242	96.7%	96.7%
VIC	65,109	65,105	94.7%	94.7%
QLD	45,804	45,798	95.0%	95.0%
SA	26,133	26,116	96.1%	96.0%
WA	24,116	24,115	99.6%	99.6%
TAS	7,566	7,564	100.0%	100.0%
NT	884	884	100.0%	100.0%
ACT	2,969	2,969	100.0%	100.0%
Total	247,827	247,793	96.2%	96.2%

Source: My Aged Care Portal vaccination progress

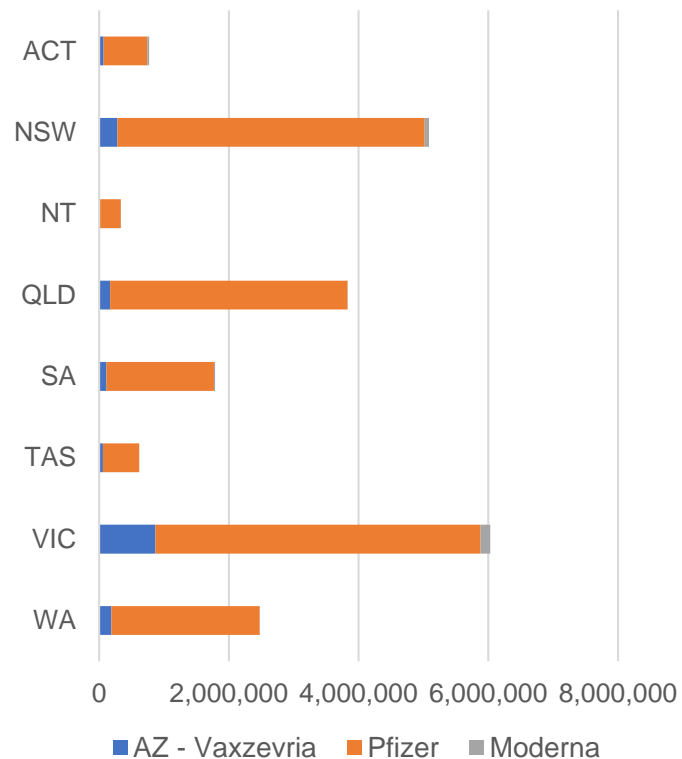
*Status updates are provided by facilities at least once per week. Reporting is updated Monday to Friday to encompass different facility updates being made on different days.

Data is sourced directly from Aged Care Service Providers and is not drawn or closely aligned with data from AIR due to inconsistencies and potential lags in uploading of records.

Data as at:
20 Apr 2022

Jurisdiction administered

Total vaccine doses administered in State and Territory clinics as at 20 April



20,943,957 total vaccine doses administered
in State and Territory clinics as at 20 April
+ **12,091** recorded in the last 24 hours
+ **46,689** recorded in the last 7 days

NSW
5,087,033
(+1,634 daily
increase)

VIC
6,036,129
(+3,378 daily
increase)

QLD
3,830,984
(+1,054 daily
increase)

WA
2,477,168
(+1,780 daily
increase)

TAS
617,520
(+377 daily
increase)

SA
1,790,553
(+1,343 daily
increase)

ACT
770,259
(+1,289 daily
increase)

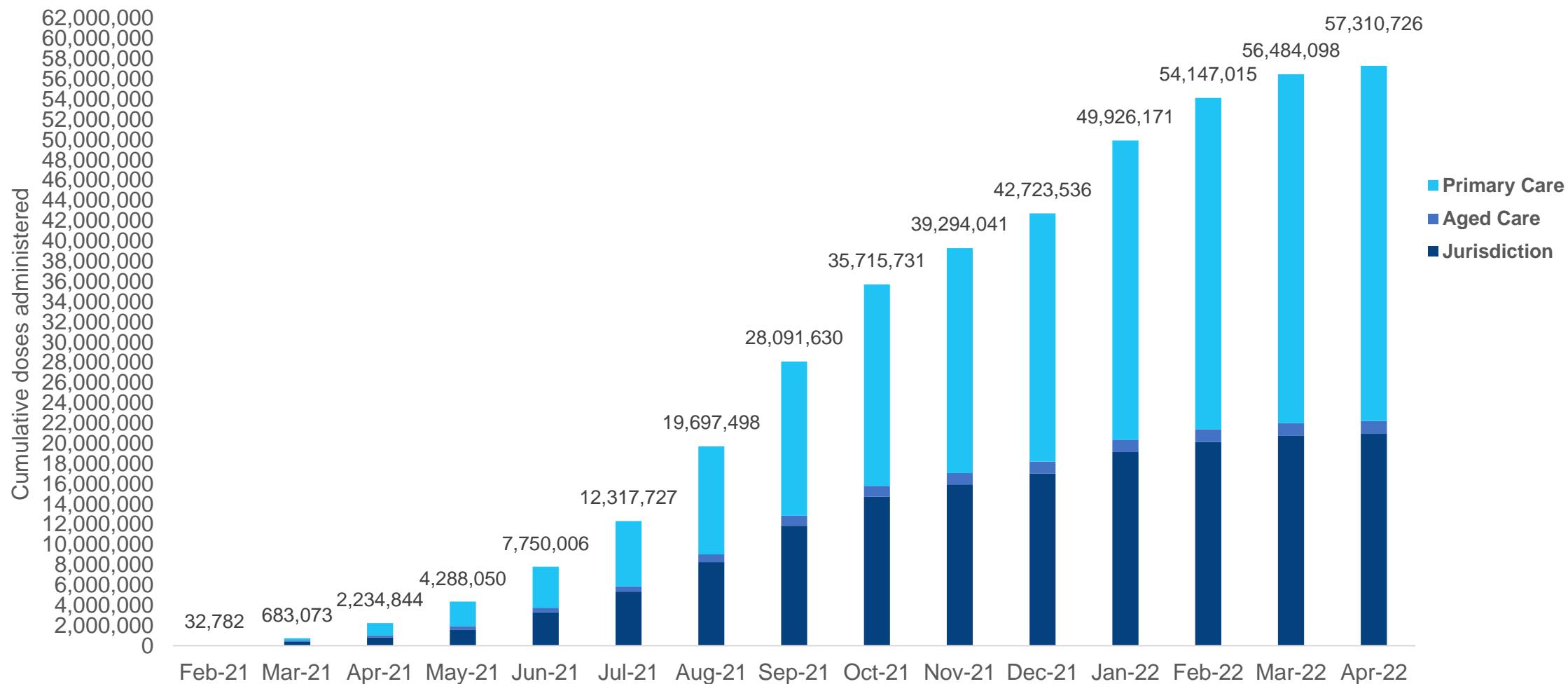
NT
334,311
(+1,236 daily
increase)

*Sourced from the Australian Immunisation Register. Numbers are calculated as difference in daily cumulative reported numbers to allow for historical corrections.

Source: Australian Immunisation Register

Cumulative doses administered by channel

Data as at:
20 Apr 2022



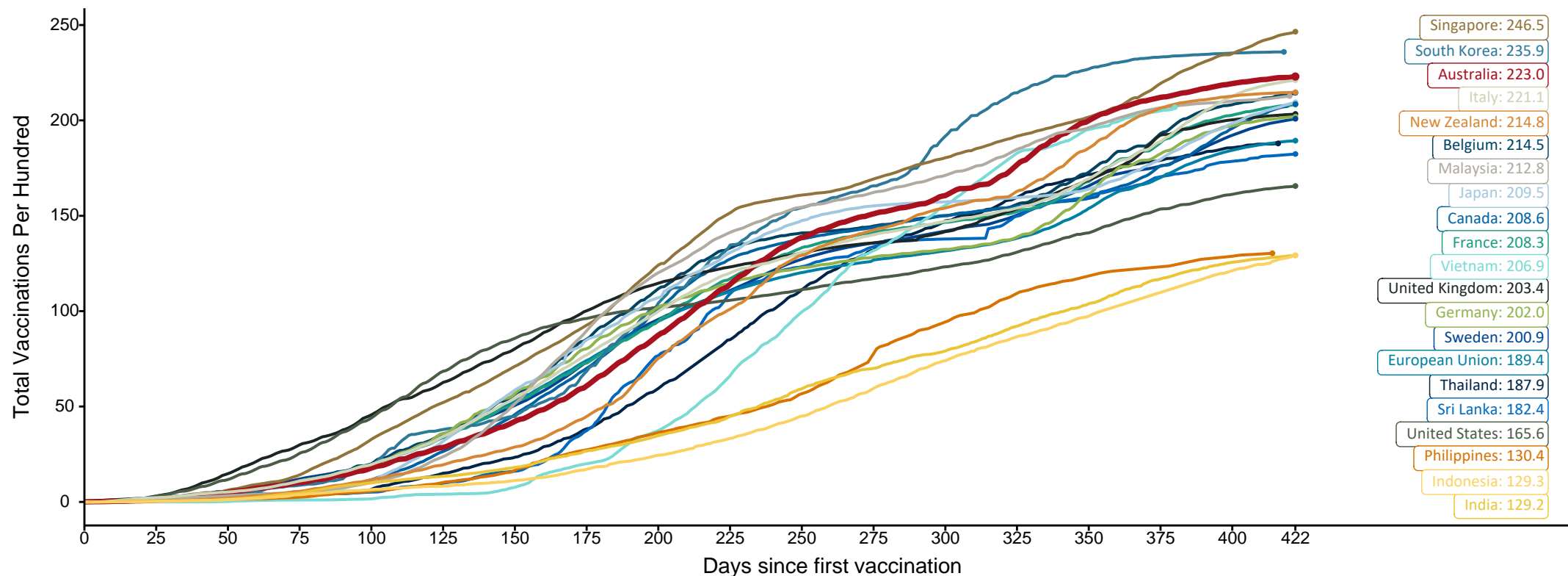
Source: Australian Immunisation Register

Doses at equivalent stages of rollout (Day 422)

Data as at:
20 Apr 2022

The x-axis is truncated at the length of Australia's vaccination program. Countries with intermittent reporting have had their doses per 100 imputed to Australia's current stage of rollout. Israel excluded as it is beyond scale of the graph

Cumulative doses administered (20 Apr): **57,310,726**



Note: From 11 January 2022, data for Australia includes all doses administered to people 5 and over. Prior to 11 January, data was for 12 and over.

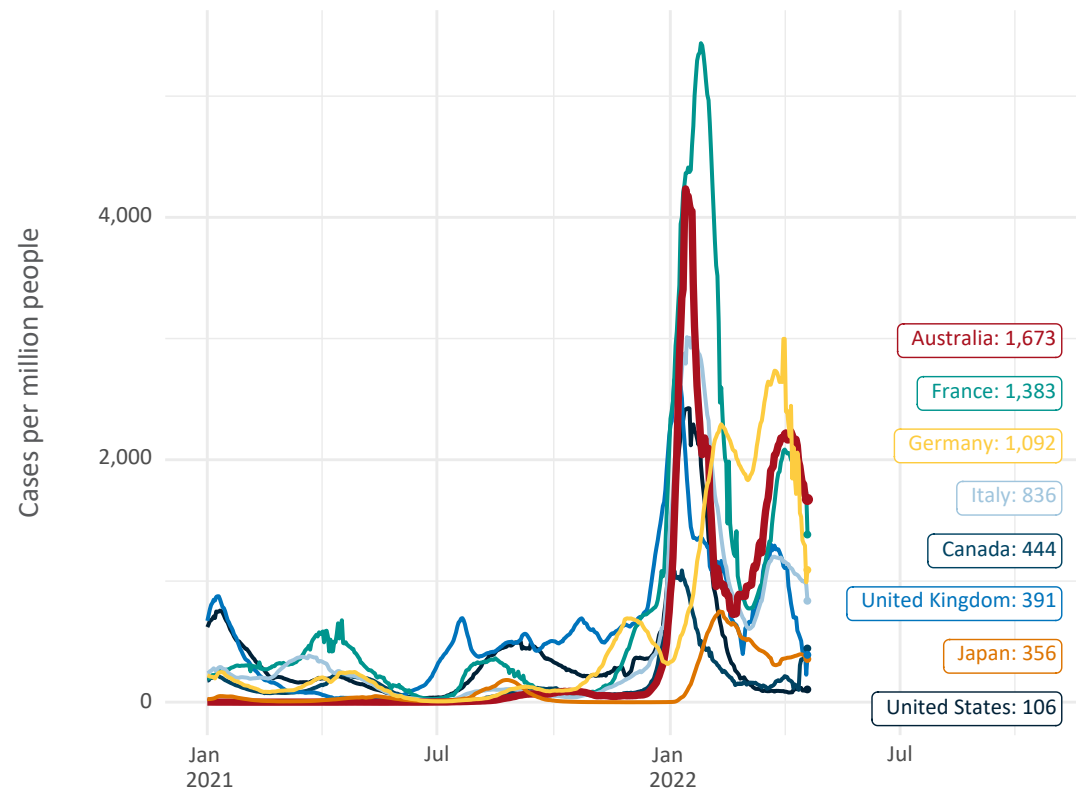
Source: Department of Health (Australia), Our World in Data (international)

Latest data: 20 April

Data as at:
20 Apr 2022

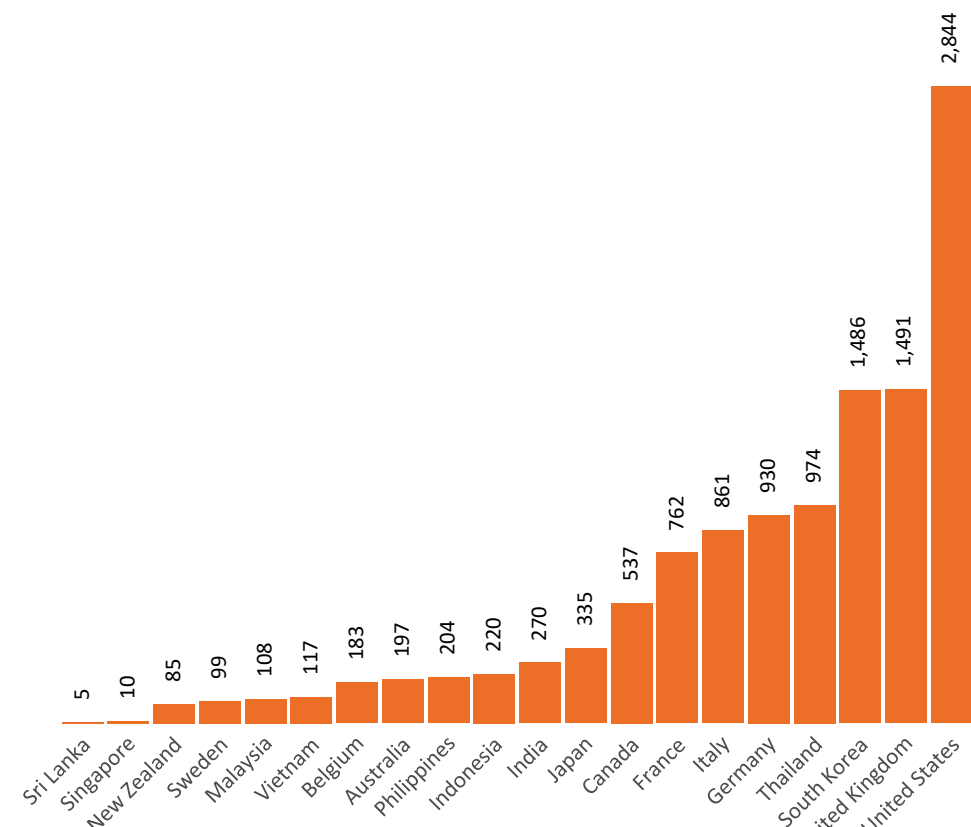
International data – COVID-19

New daily cases per million in 2021, Australia and G7 countries
Smoothed - 7 day average



Source: OWID
Data downloaded: 21 Apr 2022 09:32
Latest data: 19 Apr 2022

COVID-19 deaths in past 7 days - Australia and select countries



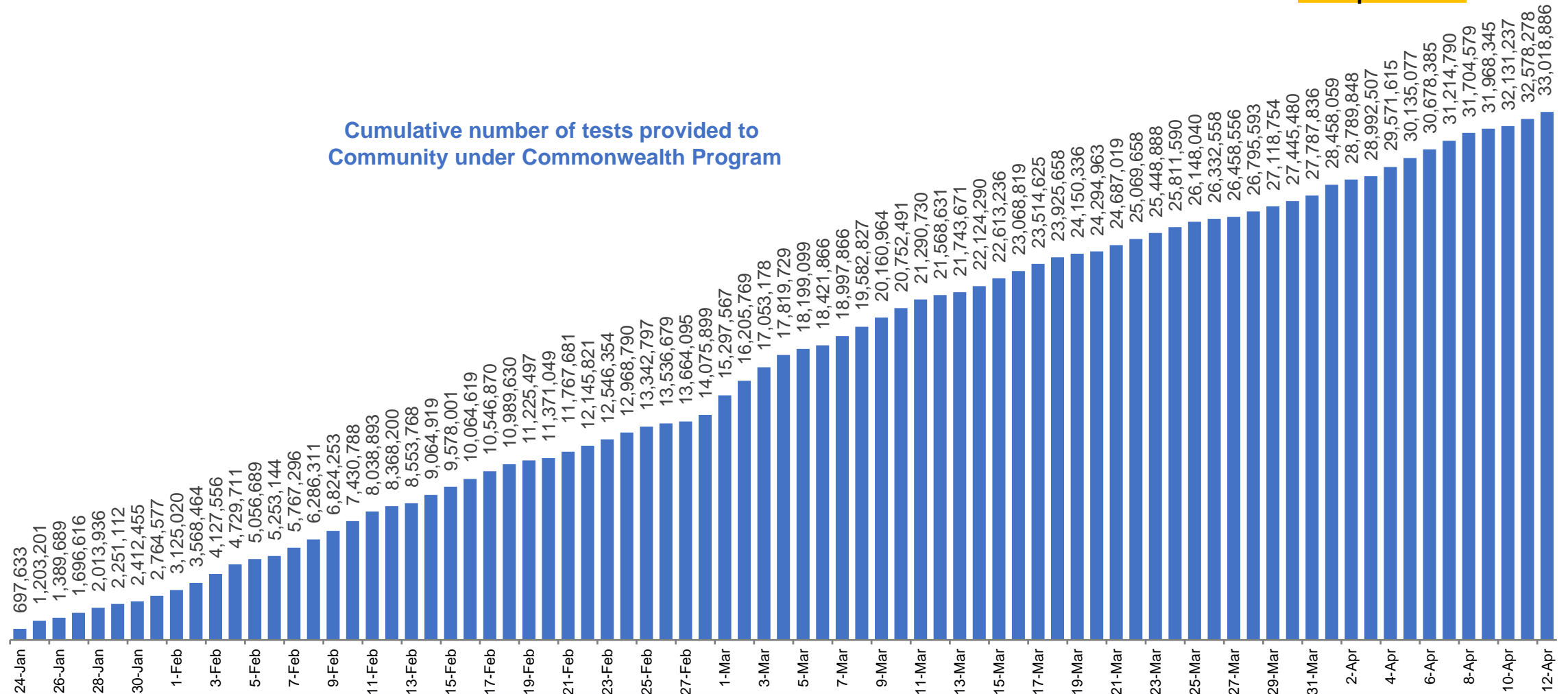
Source: OWID
Data downloaded: 21 Apr 2022 09:32
Latest data: 19 Apr 2022

Data as at
14 April 2022

Concessional rapid antigen test program

5,637 pharmacies have delivered over **33.0 million rapid antigen tests** to more than **4.6m eligible concession card holders** under the Government's concessional rapid antigen test program.

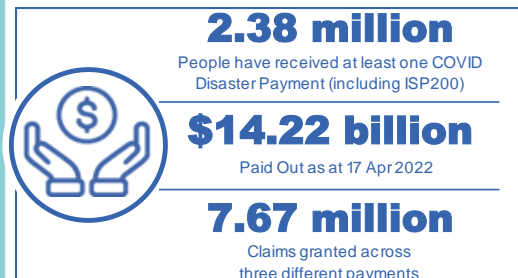
Cumulative number of tests provided to
Community under Commonwealth Program



Pandemic Response Payments

Australia's COVID-19
Vaccine Roadmap

Data as at midnight: 17 Apr 2022
Updated weekly



COVID Disaster Payment:	5.89 million claims received - 2.19 million individuals paid a total of \$12.59 billion.
\$200 Income Support Payment:	353,000 claims received - 183,000 individuals paid a total of \$268.9 million.
Pandemic Leave Disaster Payment:	1.92 million claims received - 1.18 million individuals paid a total of \$1.35 billion.



COVID Disaster Payment

assisting during a lockdown event in a Commonwealth hotspot.

Income Support Payment \$200

for income support recipients who lost at least 8 hours of work.

Pandemic Leave Disaster Payment

for those who have to self-isolate, quarantine or care.

For more information visit:
servicesaustralia.gov.au

COVID-19 DISASTER PAYMENTS

Northern Territory

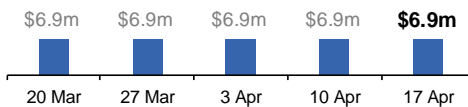
Lockdown (#3) from 16 Nov to 22 Nov
Claiming period ended 27 Dec

7,500 people have received at least one COVID Disaster Payment.

\$6.9m paid out as at 17 Apr 2022.

Nil paid in initial payments in the week ending 17 Apr 2022.

Cumulative payments made by Territory since activation on 25 Aug 2021.



Victoria

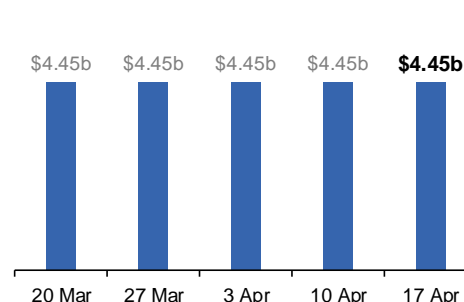
Lockdown (#6) from 6 Aug to 28 Oct
Claiming period ended 9 Dec

745,000 people have received at least one COVID Disaster Payment.

\$4.45b paid out as at 17 Apr 2022.

Nil paid in initial and reoccurring payments in the week ending 17 Apr 2022.

Cumulative payments made by State since activation on 8 Jun 2021.



New South Wales

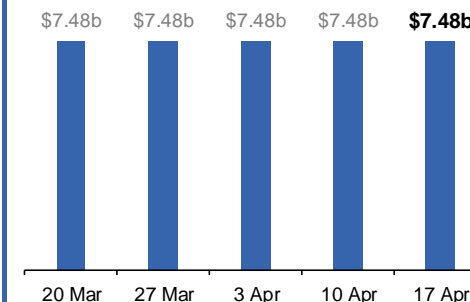
Lockdown from 24 Jun to 10 Oct
Claiming period ended 27 Nov

1.08m people have received at least one COVID Disaster Payment.

\$7.48b paid out as at 17 Apr 2022.

Nil paid in initial and reoccurring payments in the week ending 17 Apr 2022.

Cumulative payments made by State since activation on 1 Jul 2021.



Australian Capital Territory

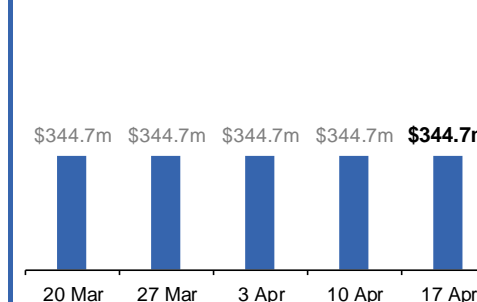
Lockdown from 12 Aug to 14 Oct
Claiming period ended 25 Nov

65,000 people have received at least one COVID Disaster Payment.

\$344.7m paid out as at 17 Apr 2022.

Nil paid in initial and reoccurring payments in the week ending 17 Apr 2022.

Cumulative payments made by Territory since activation on 20 Aug 2021.



Pandemic Response Payments (continued)

Data as at midnight: 17 Apr 2022
Updated weekly

COVID-19 DISASTER PAYMENTS

Tasmania

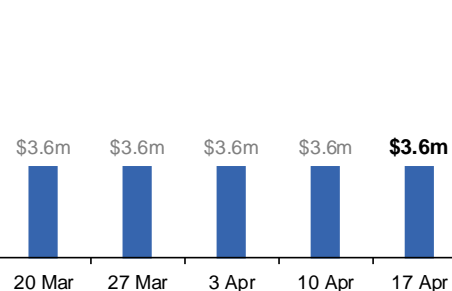
Lockdown from 15 Oct to 18 Oct
Claiming period ended 12 Nov

6,900 people have received at least one COVID Disaster Payment.

\$3.6m paid out as at 17 Apr 2022.

Nil paid in initial and reoccurring payments in the week ending 17 Apr 2022.

Cumulative payments made by State since activation on 22 Oct 2021.



Queensland

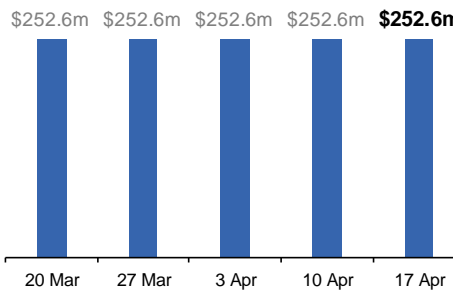
Lockdown from 31 Jul to 11 Aug
Claiming period ended 28 Aug

196,000 people have received at least one COVID Disaster Payment.

\$252.6m paid out as at 17 Apr 2022.

Nil paid in initial and reoccurring payments in the week ending 17 Apr 2022.

Cumulative payments made by State since activation on 7 Aug 2021.



South Australia

Lockdown from 21 to 27 Jul
Claiming period ended 17 Aug

86,000 people have received at least one COVID Disaster Payment.

\$48.2m paid out as at 17 Apr 2022.

Nil paid in initial and reoccurring payments in the week ending 17 Apr 2022.

Cumulative payments made by State since activation on 28 Jul 2021.

