



**Australian Government**  
**Operation COVID Shield**

# COVID-19 Vaccine Roll-out

20 April 2022

Data as at:  
19 Apr 2022

## Total vaccine doses



**57,246,780** total vaccine  
doses administered nationally as at 19 April  
**+63,039** recorded in the last 24 hours



**20,001,081**

people have had at least one  
dose

**>95%**

of people over the age of 16  
have had at least one dose



**19,664,923**

people are fully vaccinated

**>95%**

of people over the age of 16 are  
fully vaccinated



**13,273,335**

people over the age of 16  
who have received more  
than two doses

**NSW**  
**17,768,316**  
(+17,348 daily  
increase)

**VIC**  
**15,069,542**  
(+15,200 daily  
increase)

**QLD**  
**10,840,692**  
(+11,697 daily  
increase)

**WA**  
**6,281,455**  
(+8,740 daily  
increase)

**TAS**  
**1,288,090**  
(+1,223 daily  
increase)

**SA**  
**3,944,044**  
(+4,549 daily  
increase)

**ACT**  
**1,488,919**  
(+2,741 daily  
increase)

**NT**  
**565,722**  
(+1,541 daily  
increase)

\*Administration state breakdown indicates state in which a vaccine was administered

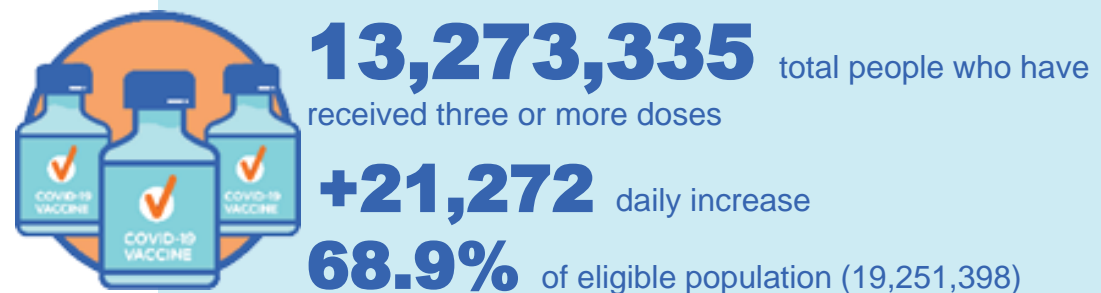
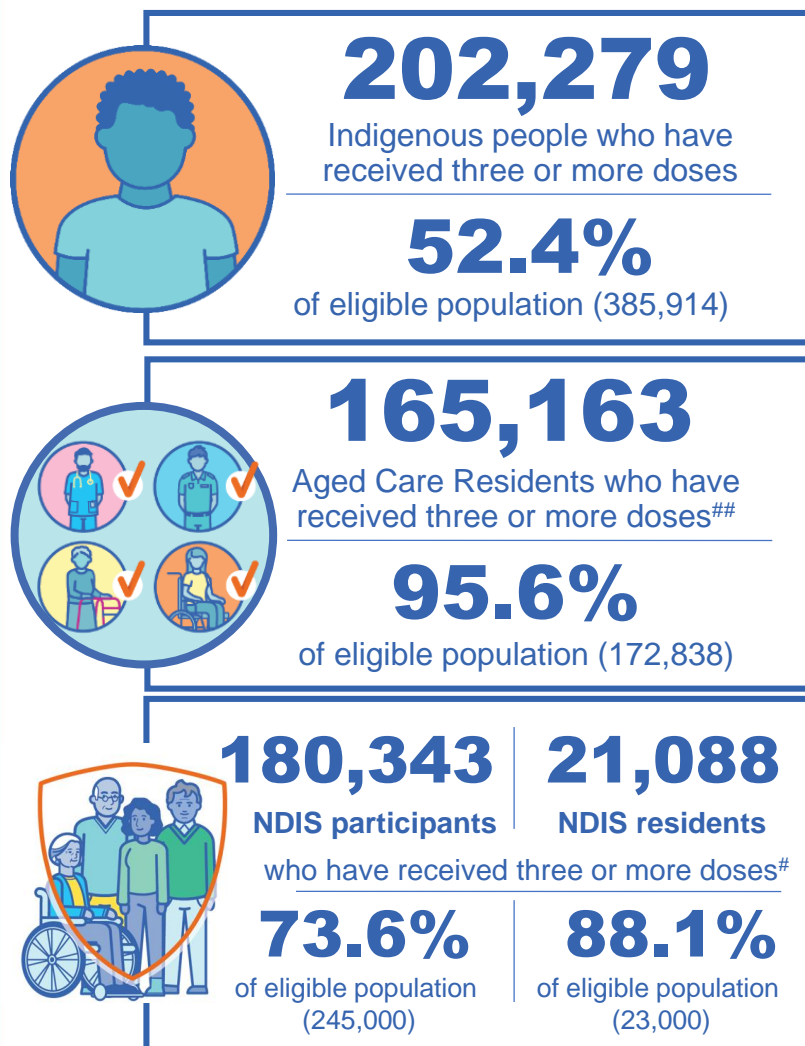
\*\*Overall dose count includes instances of more than three doses per person in a small number of cases.

Source: Australian Immunisation Register

# Booster Vaccinations

Australia's COVID-19  
Vaccine Roadmap

Data as at:  
19 Apr 2022



	Number of People	Daily Increase	% of Eligible
NSW	4,062,100	5,651	65.8%
VIC	3,563,915	4,570	70.8%
QLD	2,298,803	3,567	62.5%
WA	1,613,154	4,155	85.5%
SA	939,677	1,420	72.2%
TAS	302,579	437	71.7%
ACT	264,008	244	76.7%
NT	118,166	1,064	72.1%

\*People may belong to multiple groups and could be represented in the above breakdowns multiple times.  
# NDIS participants data as at 13 April 2022. ## Aged Care Residents data as at 19 April 2022.

Source: Australian Immunisation Register

**110,933** doses administered to persons residing in other territories or with missing residential information

# Winter / Fourth Doses

Data as at:  
18 Apr 2022  
Updated weekly

Australia's COVID-19  
Vaccine Roadmap



**215,070** total people (16+) who have received four or more doses

**+52,590** weekly increase

	Number of People 16+	Weekly Increase
ACT	6,722	1,571
NSW	79,715	18,038
NT	1,705	258
QLD	37,432	10,443
SA	13,481	3,569
TAS	5,635	1,658
VIC	53,732	13,097
WA	15,482	3,673

**1,166** doses administered to persons  
residing in other territories or with  
missing residential information

\*People may belong to multiple groups and could be represented in the above breakdowns multiple times.

Source: Australian Immunisation Register

# Vaccinations by residential location

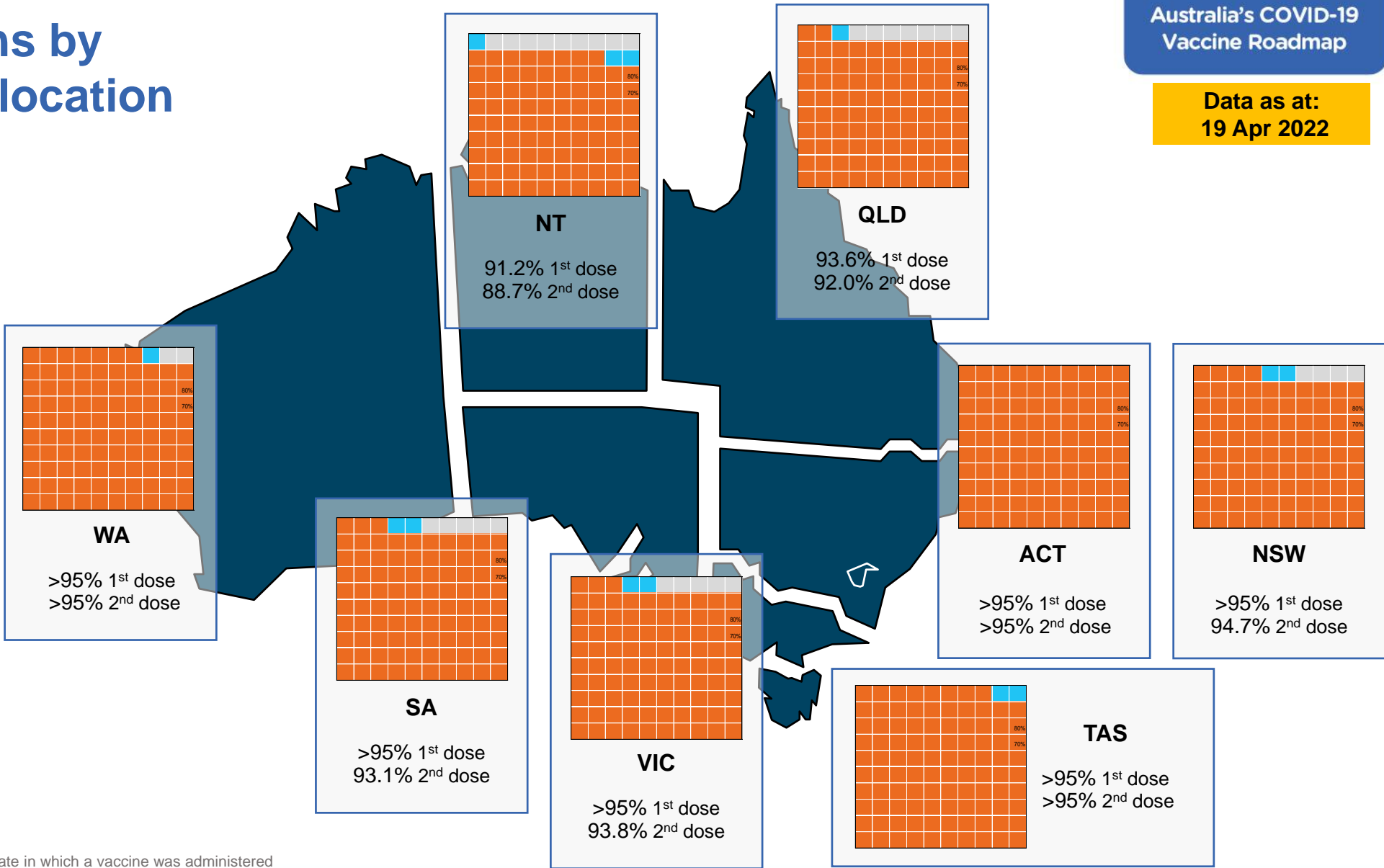
Data as at: 19 Apr 2022

## First doses

Age	Today	4 weeks ago	8 weeks ago
16+	>95%	>95%	>95%
50+	>95%	>95%	>95%
70+	>95%	>95%	>95%

## Fully vaccinated

Age	Today	4 weeks ago	8 weeks ago
16+	>95%	>95%	94.6%
50+	>95%	>95%	>95%
70+	>95%	>95%	>95%



\*Residential state may differ from the state in which a vaccine was administered

# Commonwealth and Jurisdiction vaccine doses administered

Data as at:  
19 Apr 2022



**57,246,780** total vaccine  
doses administered nationally as at 19 April  
**+ 63,039** recorded in the last 24 hours



**20,931,866**  
doses administered by state  
and territory facilities  
**+ 11,750**  
recorded in the last 24 hours

NSW	Jurisdictions	Commonwealth
Cumulative	5,085,399	12,682,917
Daily increase	1,693	15,655

TAS	Jurisdictions	Commonwealth
Cumulative	617,143	670,947
Daily increase	271	952

VIC	Jurisdictions	Commonwealth
Cumulative	6,032,751	9,036,791
Daily increase	3,415	11,785

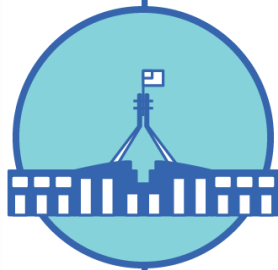
SA	Jurisdictions	Commonwealth
Cumulative	1,789,210	2,154,834
Daily increase	1,284	3,265

QLD	Jurisdictions	Commonwealth
Cumulative	3,829,930	7,010,762
Daily increase	1,066	10,631

ACT	Jurisdictions	Commonwealth
Cumulative	768,970	719,949
Daily increase	895	1,846

WA	Jurisdictions	Commonwealth
Cumulative	2,475,388	3,806,067
Daily increase	2,115	6,625

NT	Jurisdictions	Commonwealth
Cumulative	333,075	232,647
Daily increase	1,011	530



**36,314,914**  
doses administered by  
commonwealth facilities  
**+ 51,289**  
recorded in the last 24 hours

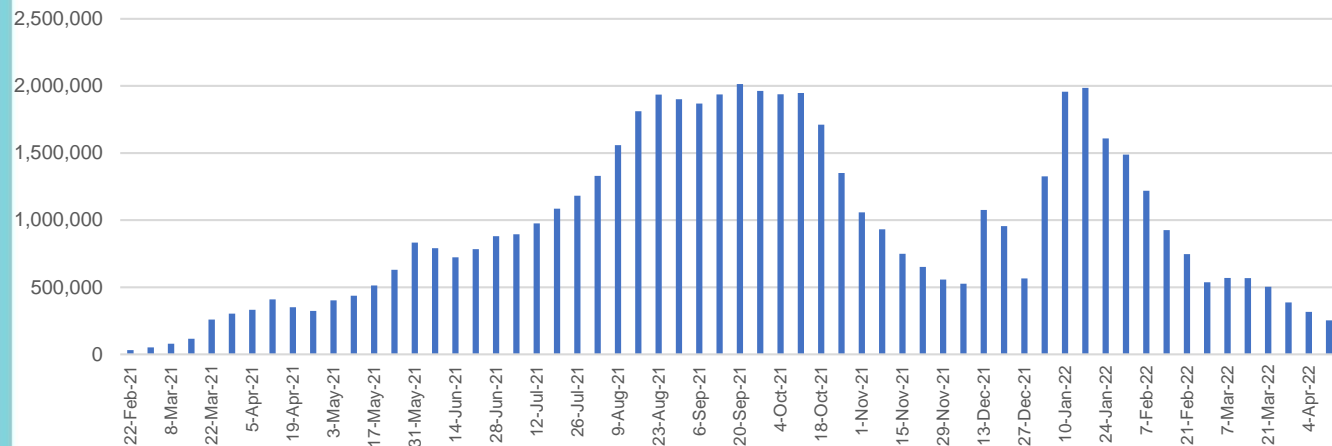
**35,043,886** total vaccine doses  
administered in primary care settings  
**1,271,028** total vaccine doses  
administered in aged care and disability  
settings

# Vaccine milestone charts

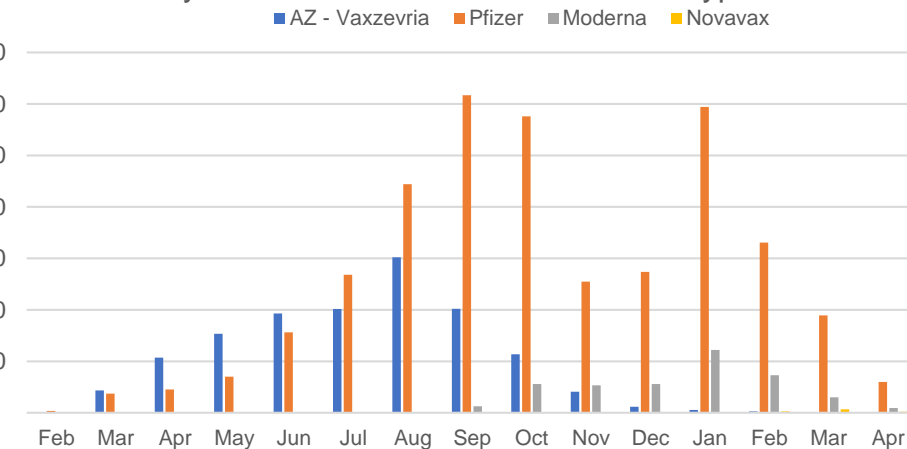
Data as at:  
19 Apr 2022

Australia's COVID-19  
Vaccine Roadmap

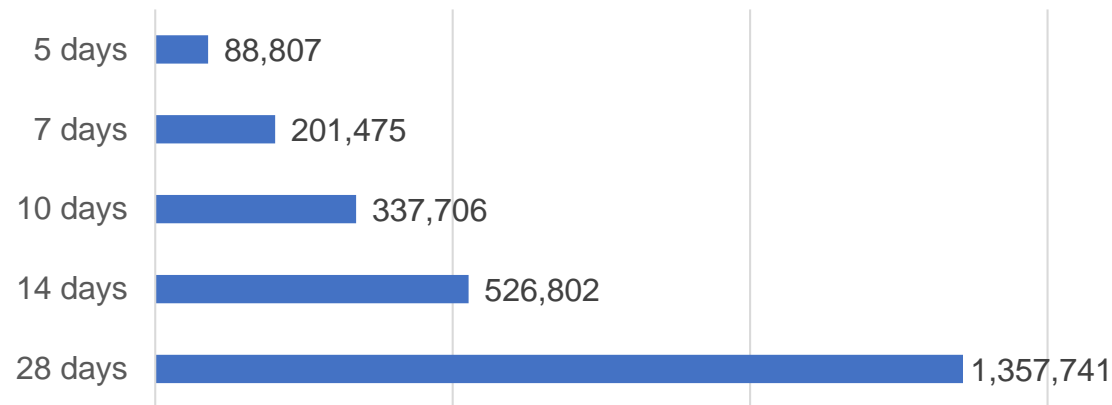
Doses Administered by Week



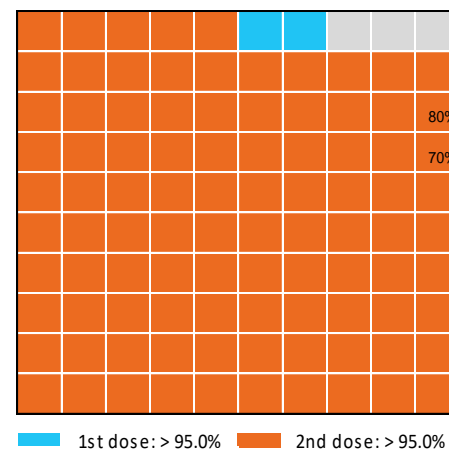
Doses by administration month and vaccine type



Doses Reported



Eligible population percentage coverage



\*Each square represents 1% of the national population.  
Squares are filled as milestones are achieved.

\*Sourced from the Australian Immunisation Register.

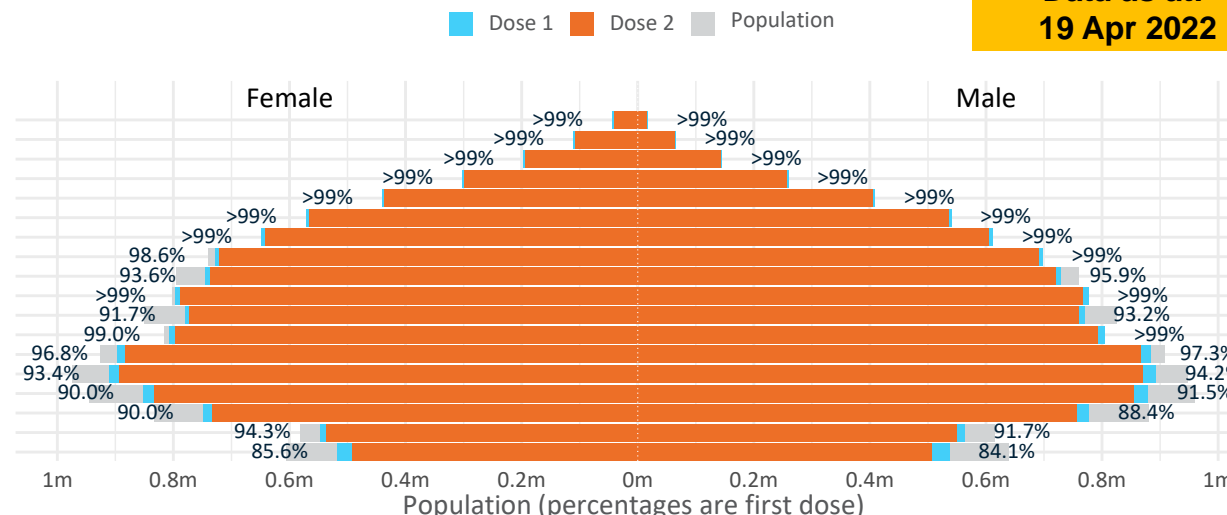
Data as at:  
19 Apr 2022

# Doses by age and sex

First and second doses by age and sex

	16+	50+	12-15	5-11
Dose 1	97.00% (20,001,081 doses / 20,619,959 people)	>99% (8,848,538 doses / 8,749,703 people)	84.86% (1,055,684 doses / 1,243,990 people)	52.74% (1,200,594 doses / 2,276,638 people)
Dose 2	95.37% (19,664,923 doses / 20,619,959 people)	>99% (8,741,204 doses / 8,749,703 people)	80.33% (999,273 doses / 1,243,990 people)	34.61% (787,896 doses / 2,276,638 people)

Age	Dose 1	Dose 2
95+	61,515 (>99%)	58,115 (>99%)
90-94	176,532 (>99%)	170,851 (>99%)
85-89	342,911 (>99%)	335,844 (>99%)
80-84	562,635 (>99%)	555,245 (>99%)
75-79	850,199 (>99%)	841,717 (>99%)
70-74	1,113,578 (>99%)	1,102,584 (>99%)
65-69	1,262,256 (>99%)	1,247,974 (>99%)
60-64	1,428,852 (>99%)	1,412,599 (98.3%)
55-59	1,475,354 (94.8%)	1,458,775 (93.8%)
50-54	1,574,706 (>99%)	1,557,500 (>99%)
45-49	1,551,888 (92.6%)	1,532,935 (91.4%)
40-44	1,614,944 (>99%)	1,590,446 (98.2%)
35-39	1,785,933 (97.3%)	1,753,507 (95.6%)
30-34	1,812,887 (94.2%)	1,770,945 (92.1%)
25-29	1,741,526 (91.3%)	1,694,152 (88.9%)
20-24	1,533,114 (89.5%)	1,493,740 (87.2%)
16-19	1,112,251 (93.0%)	1,087,994 (91.0%)
12-15	1,055,684 (84.9%)	999,273 (80.3%)



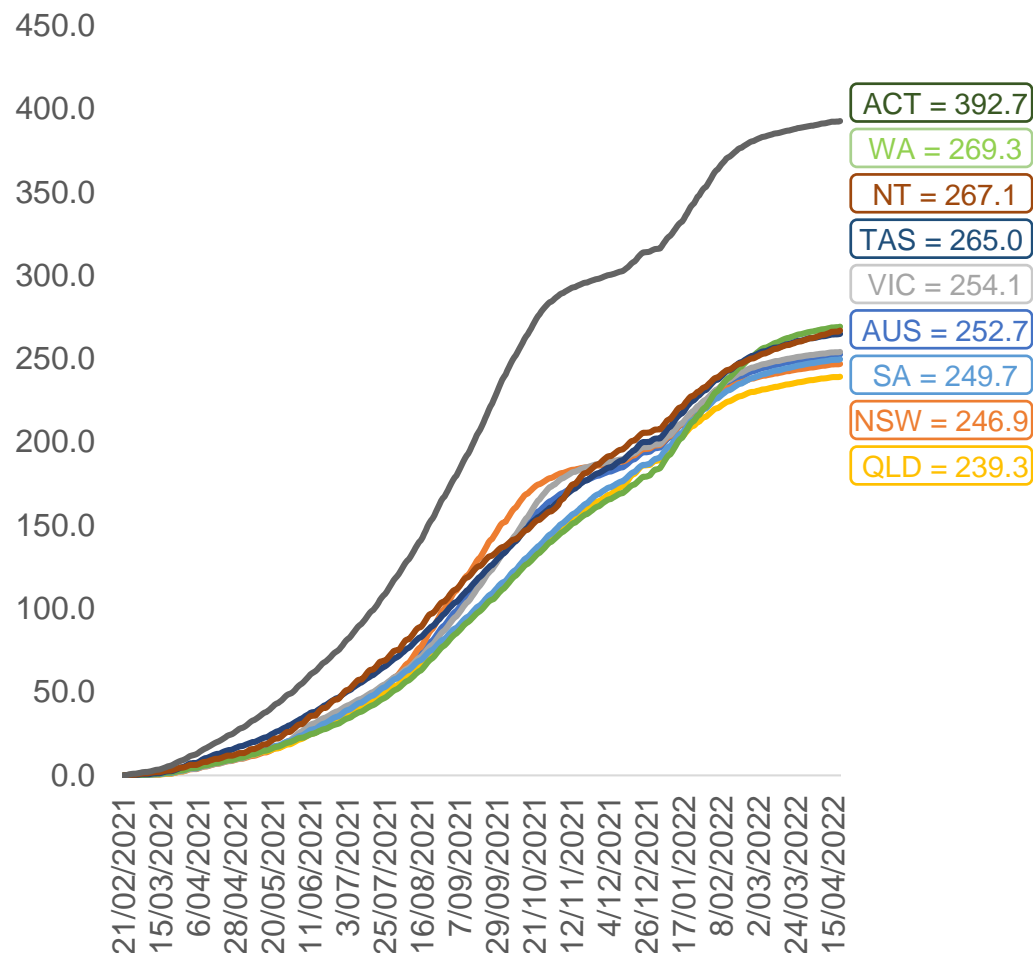
	AUS	ACT	NSW	NT	QLD	SA	TAS	VIC	WA
16 and over - dose 1	20,001,081	351,826	6,311,986	173,770	3,848,361	1,371,286	443,804	5,146,977	2,088,198
16 and over - dose 2	19,664,923	346,342	6,216,574	168,994	3,782,934	1,341,181	434,515	5,070,728	2,055,302
16 and over - population	20,619,959*	344,037	6,565,651	190,571	4,112,707	1,440,400	440,172	5,407,574	2,114,978
16 and over % with dose 1	97.00%	>99%	96.14%	91.18%	93.57%	95.20%	>99%	95.18%	98.73%
16 and over % with dose 2	95.37%	>99%	94.68%	88.68%	91.98%	93.11%	98.71%	93.77%	97.18%
5 to 11 - dose 1	1,200,594	31,896	357,477	13,214	209,544	84,269	28,785	326,517	141,032
5 to 11 - dose 2	787,896	24,855	236,551	7,505	137,003	56,075	21,866	215,427	84,646
5 to 11 - population	2,276,638	39,789	716,460	24,750	478,731	148,816	45,033	578,499	244,154
5 to 11 % with dose 1	52.74%	80.16%	49.89%	53.39%	43.77%	56.63%	63.92%	56.44%	57.76%
5 to 11 % with dose 2	34.61%	62.47%	33.02%	30.32%	28.62%	37.68%	48.56%	37.24%	34.67%
12 to 15 - dose 1	1,055,684	20,130	324,988	10,863	207,119	68,445	22,938	275,705	115,851
12 to 15 - dose 2	999,273	19,560	310,334	9,782	194,026	64,733	21,811	263,742	106,855
12 to 15 - population	1,243,990	19,693	390,330	13,060	270,146	82,747	26,308	308,611	132,869
12 to 15 % with dose 1	84.86%	>99%	83.26%	83.18%	76.67%	82.72%	87.19%	89.34%	87.19%
12 to 15 % with dose 2	80.33%	>99%	79.51%	74.90%	71.82%	78.23%	82.91%	85.46%	80.42%

\*National population will not equal sum of listed jurisdictions due to a small number of people counted in national population residing in some 'other' territories. Sum of state doses will not add to national total as some records are unable to be geocoded to a State or Territory.  
Doses sourced from Australian Immunisation Register, population from ABS ERP June 2020



# Vaccinations by location

Cumulative total doses administered vs eligible state populations\*

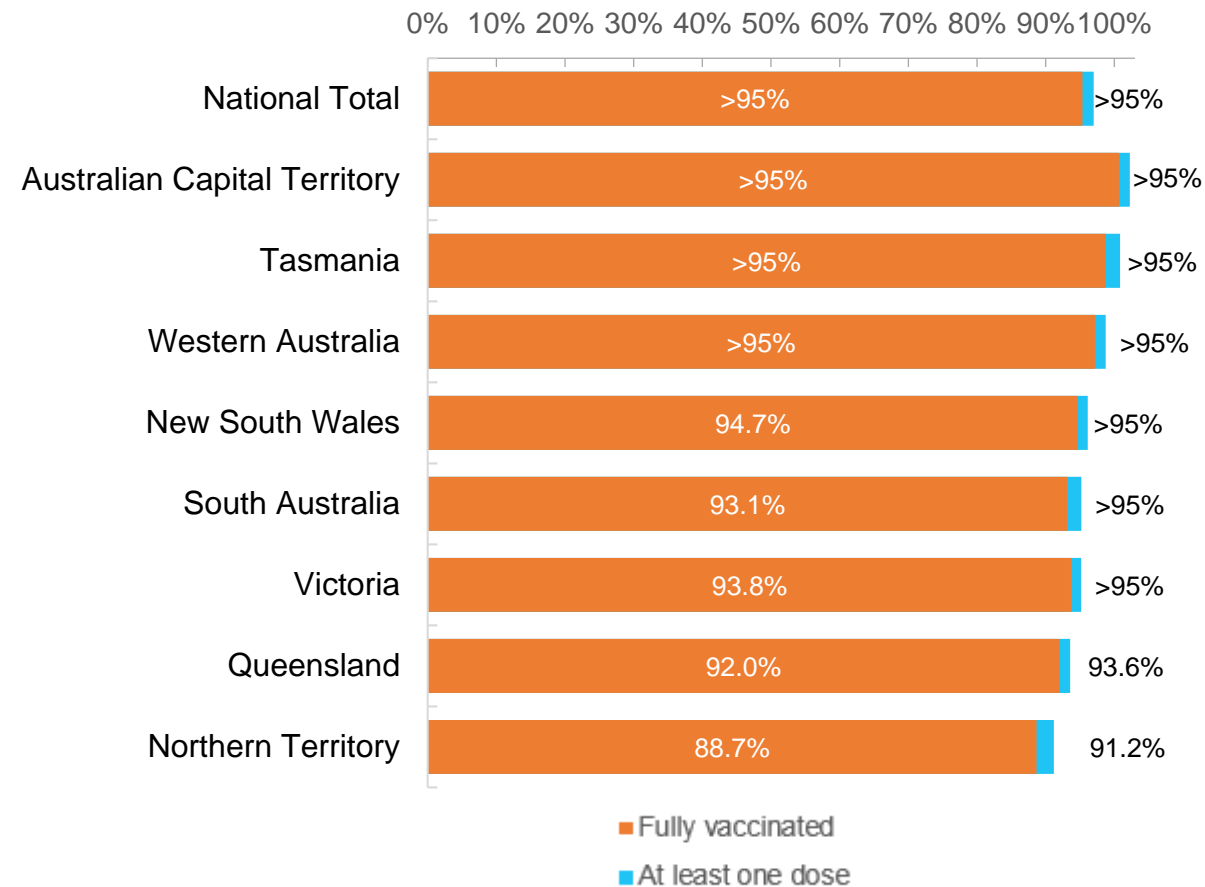


\*Not an indication of percentage vaccinated, numbers will exceed 100 due to multiple doses required per person of the population. All doses are included for those aged 12 and above, and are based on vaccination provider location.

Data as at:  
19 Apr 2022

Australia's COVID-19  
Vaccine Roadmap

First and Second Doses by residential location



# Aboriginal and Torres Strait Islander peoples

## Number of people vaccinated

Data as at:  
19 Apr 2022  
Updated weekly

Australia's COVID-19  
Vaccine Roadmap



**437,863**

people over the age of 16  
have had at least one dose

**84.4%**

of people over the age of 16  
have had at least one dose



**417,961**

people over the age of 16  
are fully vaccinated

**80.5%**

of people over the age of 16 are  
fully vaccinated



People aged 12 – 15 years

**48,586**

**42,655**

**68.4%**

At least one dose

**60.1%**

Fully vaccinated

### 178 Aboriginal community controlled health services (ACCHS)

0#  
**ACT**

50  
**NSW**

27  
**NT**

44  
**QLD**

12  
**SA**

3  
**TAS**

21  
**VIC**

21  
**WA**

Medicare Address State <sup>##</sup>	Individuals Dose 1	Individuals Dose 1 %	Individuals Dose 2	Individuals Dose 2 %
Australian Capital Territory	4,789	90.9%	4,671	88.7%
New South Wales	134,375	86.7%	131,225	84.7%
Northern Territory	41,690	89.5%	39,434	84.6%
Queensland	115,134	81.3%	109,485	77.3%
South Australia	19,799	79.9%	18,329	74.0%
Tasmania	13,833	88.5%	13,422	85.8%
Victoria	35,270	89.7%	34,465	87.7%
Western Australia	53,439	86.0%	49,135	79.1%
Unknown/Other Territories	19,534	68.3%	17,795	62.2%
<b>Totals</b>	<b>437,863</b>	<b>84.4%</b>	<b>417,961</b>	<b>80.5%</b>

Source: Australian Immunisation Register

\*Identifying as Aboriginal and Torres Strait Islander is optional and the estimated population may be under reported.

\*\*Includes all Aboriginal and Torres Strait Islander peoples who have received a vaccination, not limited to those administered in an ACCHS setting

##ACCHS in the ACT are currently operating as a Commonwealth Vaccine Clinics so not included to avoid double counting

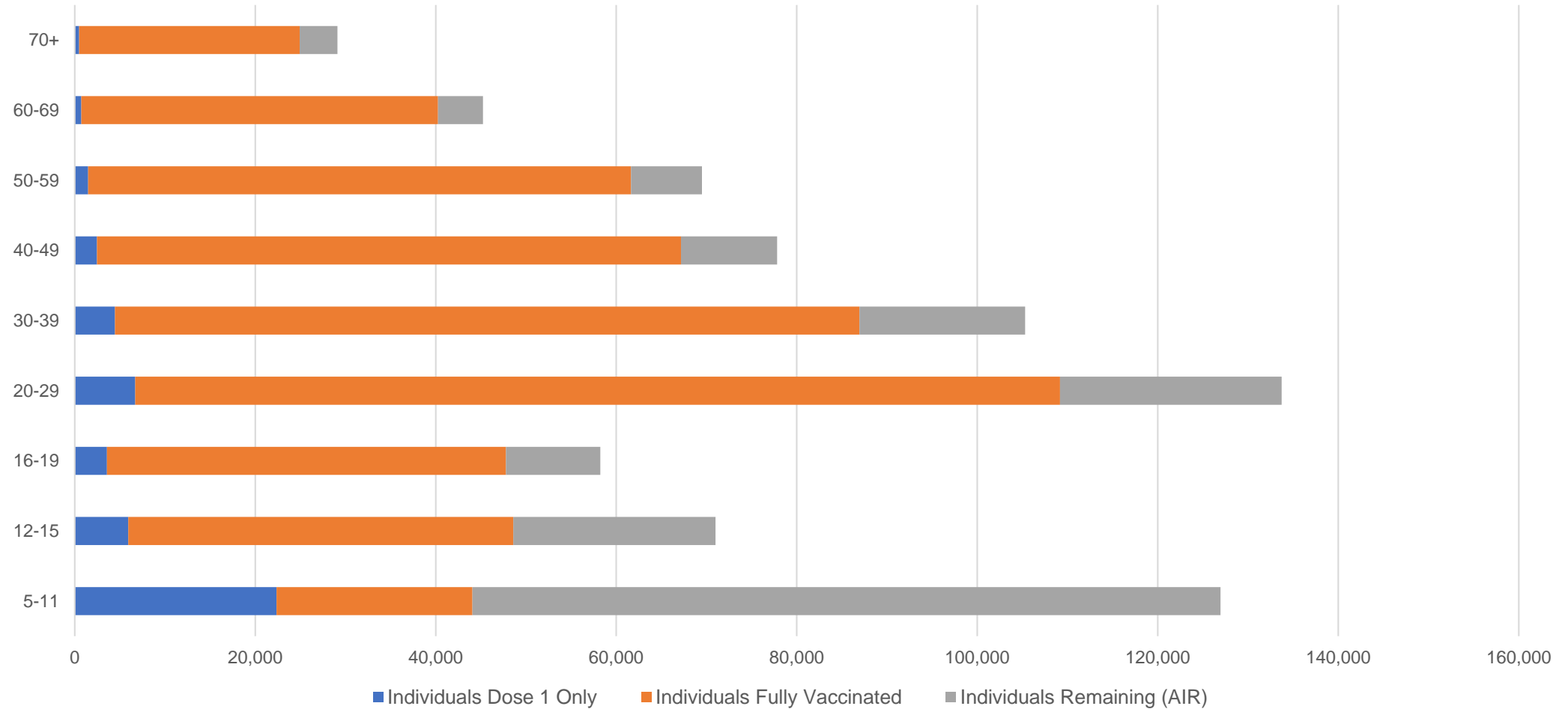
##The above table includes all identified Aboriginal and Torres Strait Islander people who are aged 16 and above by their state of residence.

# Aboriginal and Torres Strait Islander peoples

## Number of people vaccinated by age

Data as at:  
19 Apr 2022  
Updated weekly

Australia's COVID-19  
Vaccine Roadmap



Source: Australian Immunisation Register

# Commonwealth primary care

Data as at:  
19 Apr 2022

Australia's COVID-19  
Vaccine Roadmap



## Primary care vaccine administration sites

<b>5,793</b>	<b>128</b>	<b>178</b>	<b>3,598</b>
GPs	CVCs	ACCHS	Pharmacies



**35,043,886** total vaccine doses administered  
primary care settings as at 19 April  
**+ 51,080** recorded in the last 24 hours

## Primary care vaccinations by provider type

	Doses administered	Daily increase	7 day increase
General Practice* includes other Commonwealth	28,244,945	33,533	98,511
Pharmacy	6,798,941	17,547	54,367

**NSW**  
**12,125,752**  
(+15,837 daily increase)

**VIC**  
**8,721,964**  
(+11,810 daily increase)

**QLD**  
**6,732,036**  
(+11,129 daily increase)

**WA**  
**3,673,128**  
(+6,647 daily increase)

**TAS**  
**650,265**  
(+946 daily increase)

**SA**  
**2,075,650**  
(+3,304 daily increase)

**ACT**  
**551,034**  
(+1,083 daily increase)

**NT**  
**209,935**  
(+516 daily increase)

**304,122**

doses administered to persons  
residing in other territories or with  
missing residential information

\*General practice includes Commonwealth Vaccination Clinics, Aboriginal Community Health Centres, Royal Flying Doctor Service and other Commonwealth vaccination facilities

Source: Australian Immunisation Register

Data as at:  
19 Apr 2022

# Commonwealth aged care and disability doses administered



**1,271,028** (+ 209 last 24 hours)

Total vaccine doses administered in aged care and disability facilities as at 19 April

Number of doses administered as part of the Commonwealth aged and disability care rollout

**NSW**  
**558,848**  
(+14 daily increase)

**VIC**  
**234,978**  
(-11# daily increase)

**QLD**  
**202,426**  
(+128 daily increase)

**WA**  
**107,515**  
(+60 daily increase)

**TAS**  
**22,739**  
(-2 # daily increase)

**SA**  
**83,876**  
(-7 # daily increase)

**ACT**  
**16,946**  
(+30 daily increase)

**NT**  
**7,509**  
(+8 daily increase)

**36,191**

doses administered to persons  
residing in other territories or with  
missing residential information

\*Sourced from the Australian Immunisation Register. Includes all persons vaccinated at participating residential aged care, disability and related industry settings.

\*\*State level breakdown indicates the residential location and may not align to the state in which the vaccination occurred.

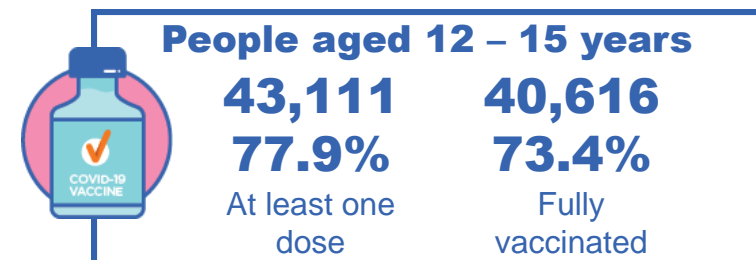
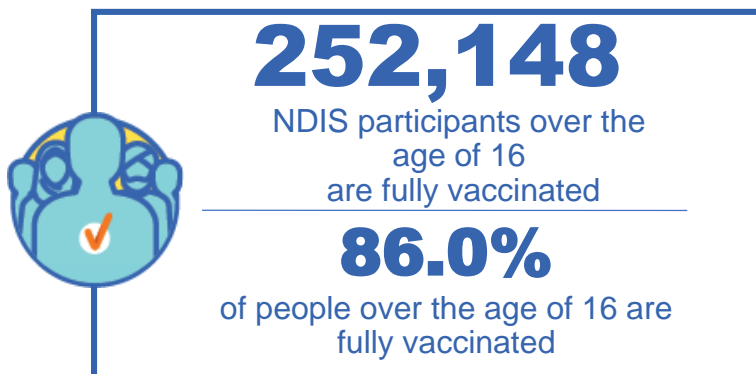
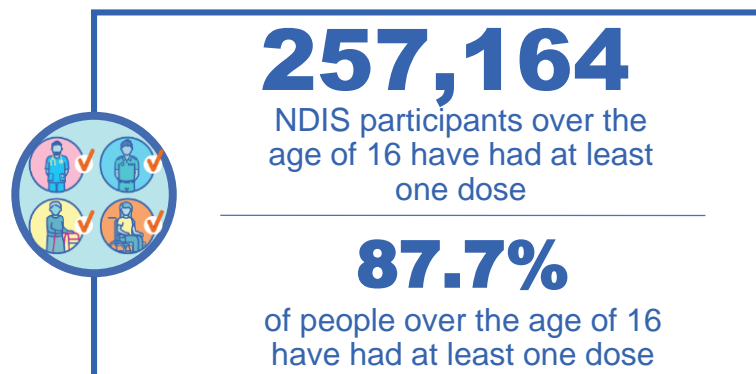
#Numbers are calculated as difference in daily cumulative reported numbers to allow for historical corrections in all data sources. This can occasionally result in negative numbers, such as for VIC, TAS and SA, where historical details about doses have been updated.

Source: Australian Immunisation Register

# National Disability Insurance Scheme (NDIS) reported vaccinations

Data as at:  
14 April 2022  
Updated weekly

Australia's COVID-19  
Vaccine Roadmap



## NDIS participant vaccinations

	People aged 16+ with at least one dose	People aged 16+ fully vaccinated	% People aged 16+ with at least one dose	% People aged 16+ fully vaccinated
ACT	4,860	4,794	89.6%	88.4%
NSW	79,019	77,712	88.1%	86.6%
NT	2,225	2,153	78.0%	75.5%
QLD	50,677	49,650	86.1%	84.4%
SA	20,982	20,441	85.5%	83.3%
TAS	6,443	6,282	87.6%	85.5%
VIC	68,437	67,206	88.9%	87.3%
WA	24,521	23,910	89.1%	86.9%
National	257,164	252,148	87.7%	86.0%

Source: Linkage between National Disability Insurance Agency data and the Australian Immunisation Register. Total NDIS participant numbers as at 28 February. Australian Immunisation Register data as at 13 April. Includes all participants regardless of residence type.

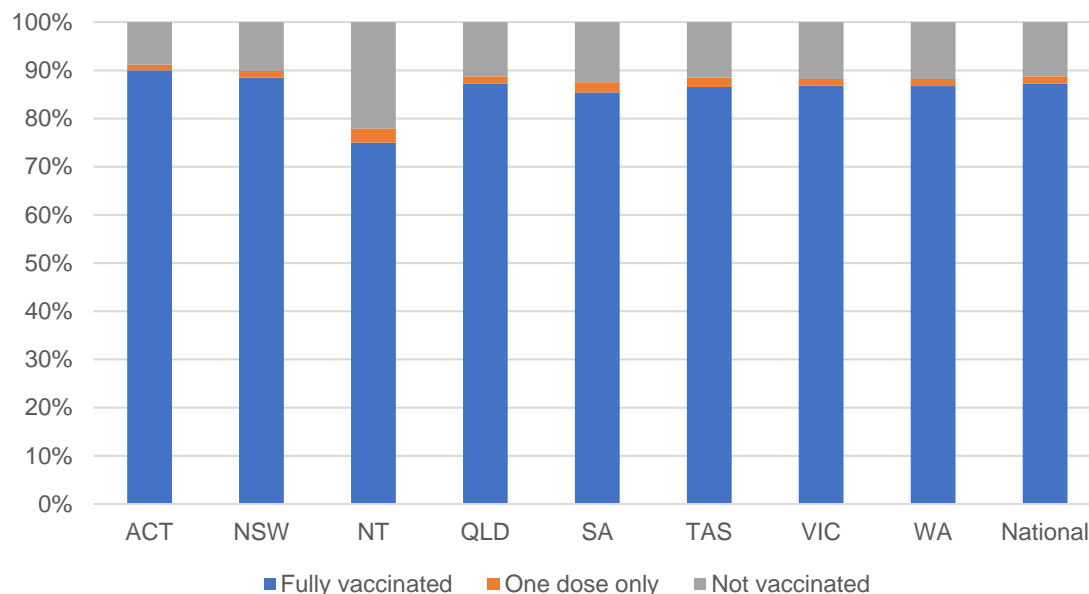
# National Disability Insurance Scheme (NDIS) reported vaccinations

Data as at:  
14 April 2022  
Updated Weekly

Australia's COVID-19  
Vaccine Roadmap

NATIONAL	Total people with at least one dose	People fully vaccinated	Total number of individuals in cohort	% People with at least one dose	% People fully vaccinated
NDIS participants living in disability accommodation	20,775	20,427	23,352	89.0%	87.5%

## NDIS participants in disability and aged care accommodation



Source: Linkage between National Disability Insurance Agency data and the Australian Immunisation Register. Includes participants residing in disability accommodation only.  
Source: Total NDIS participant numbers as at 28 February. Participant data as at 13 April. Australian Immunisation Register data as at 13 April. Worker data as at 12 April.

## NDIS workforce vaccinations

	NDIS workers with at least one dose	NDIS workers fully vaccinated	% NDIS workers with at least one dose	% NDIS workers fully vaccinated
NSW	121,655	117,549	98.2%	94.9%
VIC	116,430	112,564	98.3%	95.1%
QLD	69,510	68,675	97.5%	96.3%
WA	32,953	31,252	98.5%	93.5%
SA	35,614	32,531	98.3%	89.8%
TAS	10,709	10,402	99.7%	96.8%
ACT	3,527	3,484	99.0%	97.8%
NT	3,430	3,270	99.4%	94.8%
<b>TOTAL</b>	<b>393,828</b>	<b>379,727</b>	<b>98.2%</b>	<b>94.7%</b>

Source: the NDIS Commission has established a requirement for registered NDIS providers who provide intensive disability support services to report on the vaccination status of workers they employ, or otherwise engage, to deliver NDIS-funded supports and services, and who are required to be vaccinated in accordance with in-force state and territory public health orders. The statistics reflect data reported to the NDIS Commission by registered NDIS providers and should be considered indicative and subject to change

Note: Some registered NDIS providers are yet to report on the vaccination status of their workforce. The NDIS Commission is working with those providers around reporting requirements.

Remaining workers not included include those exempt from vaccination requirements, workers whose vaccination status is not yet verified by the provider (such as workers on leave) and provider reporting anomalies.



# Residential aged care vaccination rollout

Residential aged care facilities status

**172,894**

People fully vaccinated

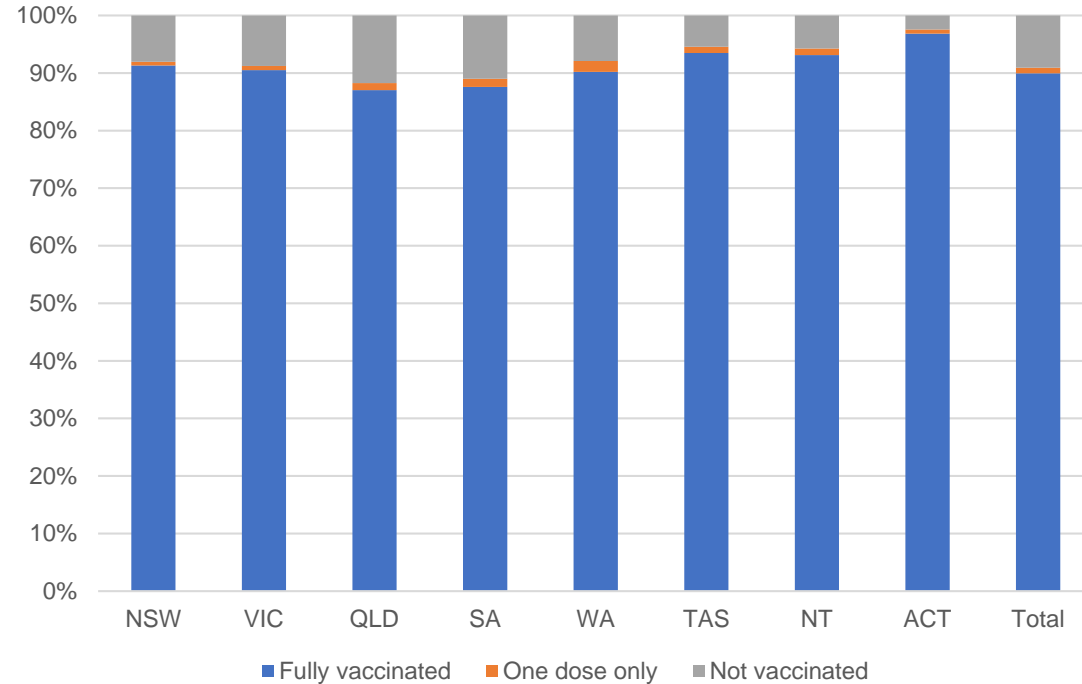
**174,763**

People with at least one dose

Australia's COVID-19 Vaccine Roadmap

Data as at:  
14 Apr 2022  
Updated weekly

## Aged care resident vaccinations



## Aged care worker vaccinations

Jurisdictions	Total workers with at least one dose	Workers fully vaccinated	% Workers with at least one dose	% Workers fully vaccinated
NSW	75,246	75,242	96.7%	96.7%
VIC	65,109	65,105	94.7%	94.7%
QLD	45,804	45,798	95.0%	95.0%
SA	26,133	26,116	96.1%	96.0%
WA	24,116	24,115	99.6%	99.6%
TAS	7,566	7,564	100.0%	100.0%
NT	884	884	100.0%	100.0%
ACT	2,969	2,969	100.0%	100.0%
Total	247,827	247,793	96.2%	96.2%

Source: My Aged Care Portal vaccination progress

\*Status updates are provided by facilities at least once per week. Reporting is updated Monday to Friday to encompass different facility updates being made on different days.

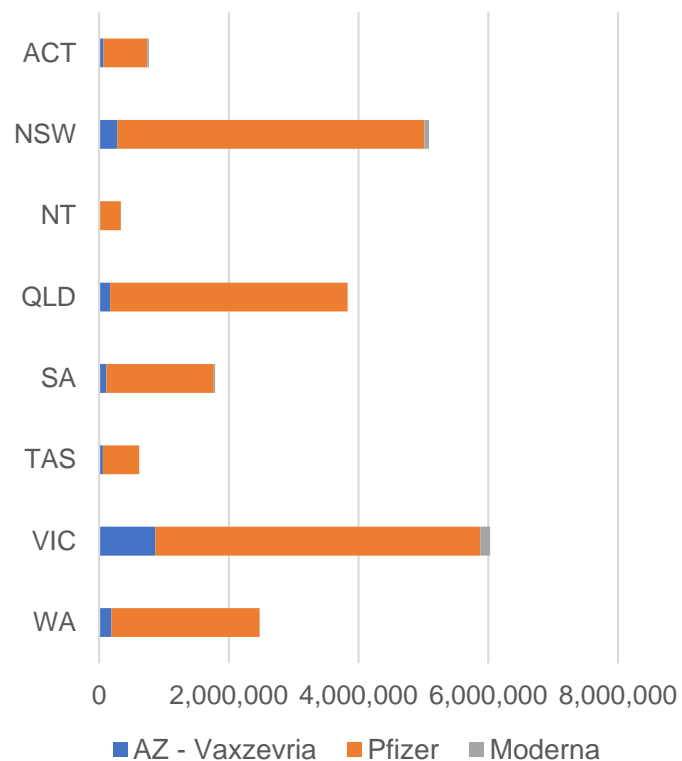
Data is sourced directly from Aged Care Service Providers and is not drawn or closely aligned with data from AIR due to inconsistencies and potential lags in uploading of records.



Data as at:  
19 Apr 2022

## Jurisdiction administered

Total vaccine doses administered in State and Territory clinics as at 19 April



**20,931,866** total vaccine doses administered  
in State and Territory clinics as at 19 April  
+ **11,750** recorded in the last 24 hours  
+ **47,227** recorded in the last 7 days

**NSW**  
**5,085,399**  
(+1,693 daily  
increase)

**VIC**  
**6,032,751**  
(+3,415 daily  
increase)

**QLD**  
**3,829,930**  
(+1,066 daily  
increase)

**WA**  
**2,475,388**  
(+2,115 daily  
increase)

**TAS**  
**617,143**  
(+271 daily  
increase)

**SA**  
**1,789,210**  
(+1,284 daily  
increase)

**ACT**  
**768,970**  
(+895 daily  
increase)

**NT**  
**333,075**  
(+1,011 daily  
increase)

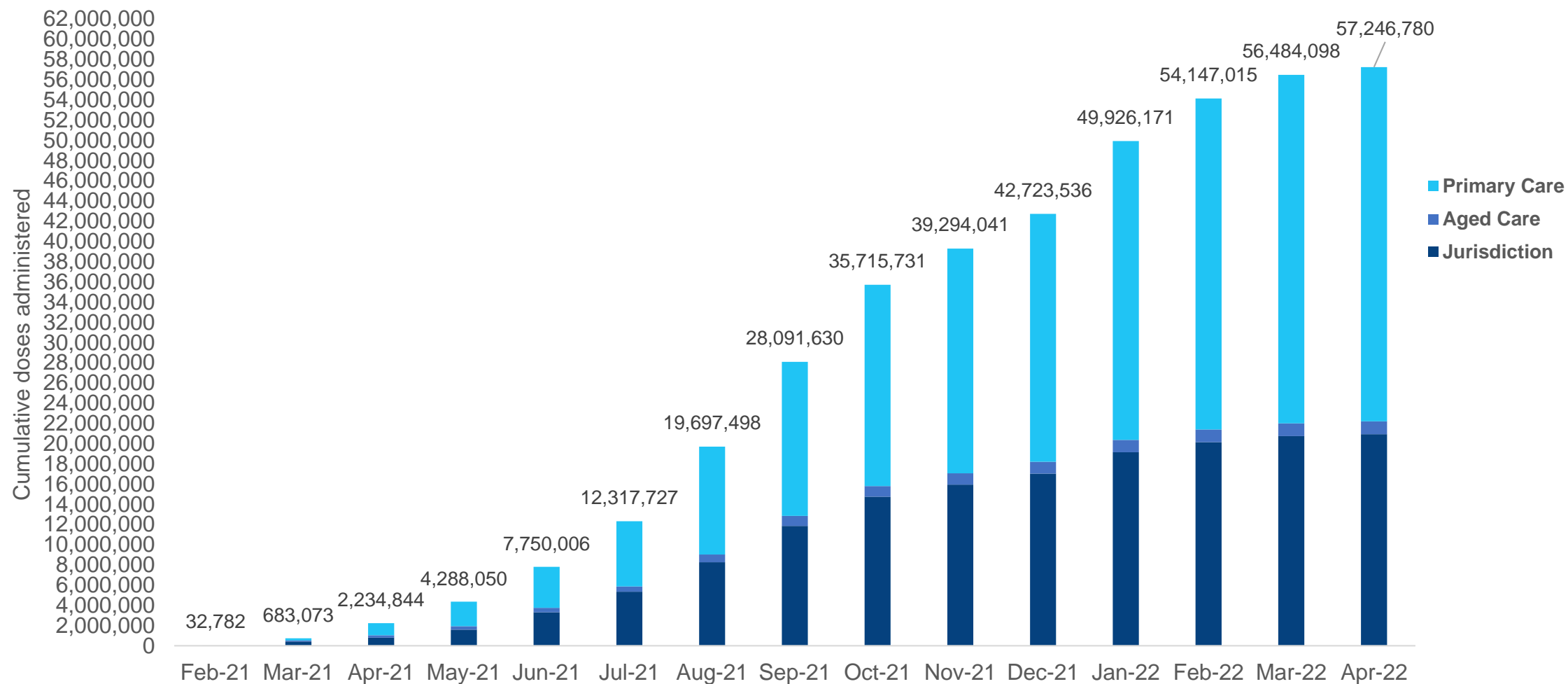
\*Sourced from the Australian Immunisation Register. Numbers are calculated as difference in daily cumulative reported numbers to allow for historical corrections.

Source: Australian Immunisation Register

# Cumulative doses administered by channel

Data as at:  
19 Apr 2022

Australia's COVID-19  
Vaccine Roadmap



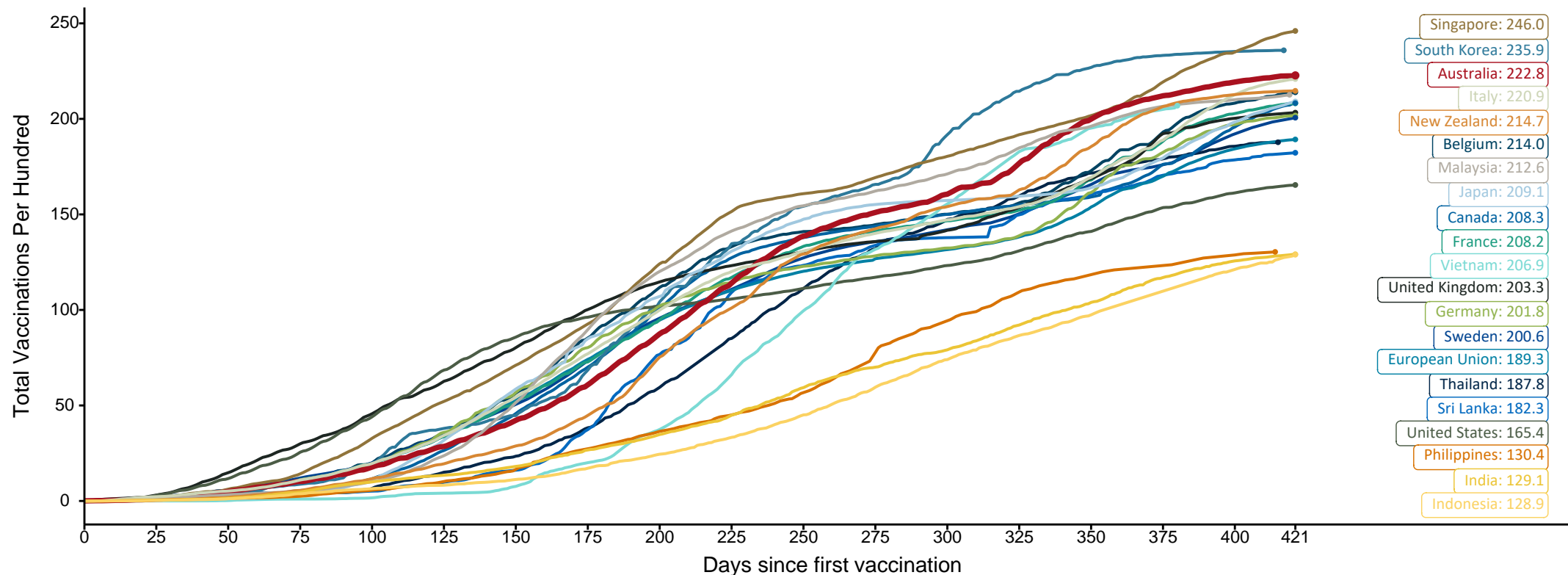
Source: Australian Immunisation Register

# Doses at equivalent stages of rollout (Day 421)

Data as at:  
19 Apr 2022

The x-axis is truncated at the length of Australia's vaccination program. Countries with intermittent reporting have had their doses per 100 imputed to Australia's current stage of rollout. Israel excluded as it is beyond scale of the graph

Cumulative doses administered (19 Apr): **57,246,780**

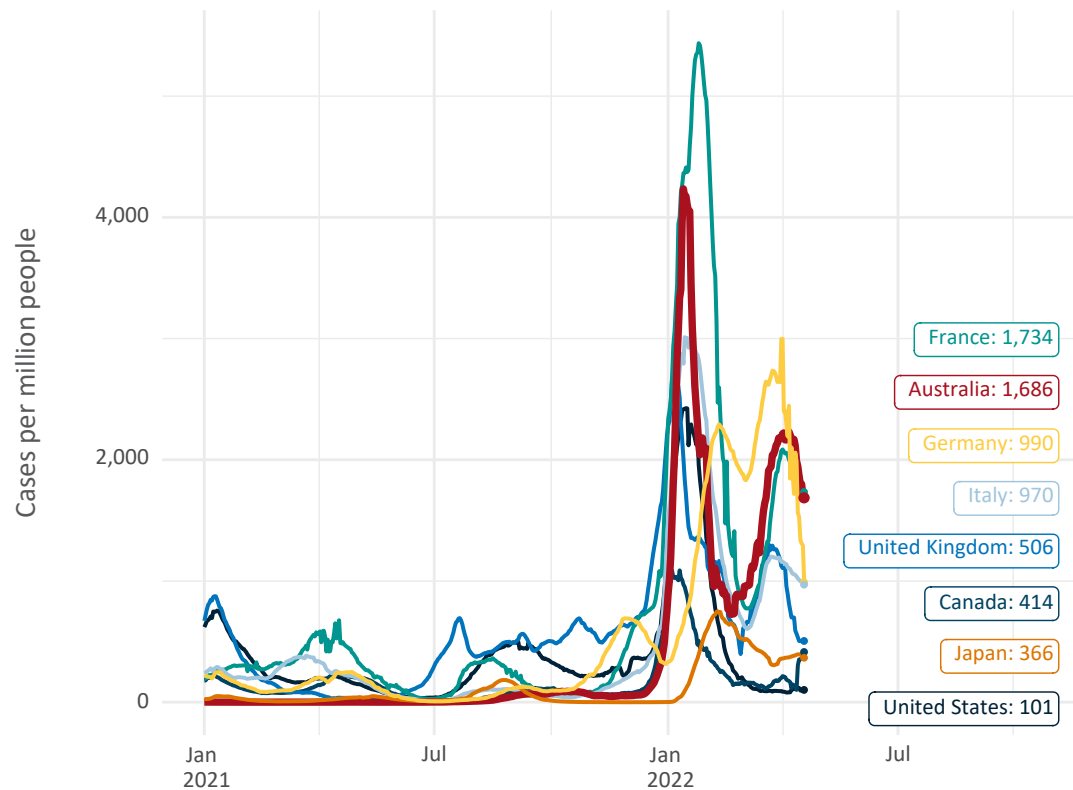


Note: From 11 January 2022, data for Australia includes all doses administered to people 5 and over. Prior to 11 January, data was for 12 and over.  
Source: Department of Health (Australia), Our World in Data (international)  
Latest data: 19 April

Data as at:  
19 Apr 2022

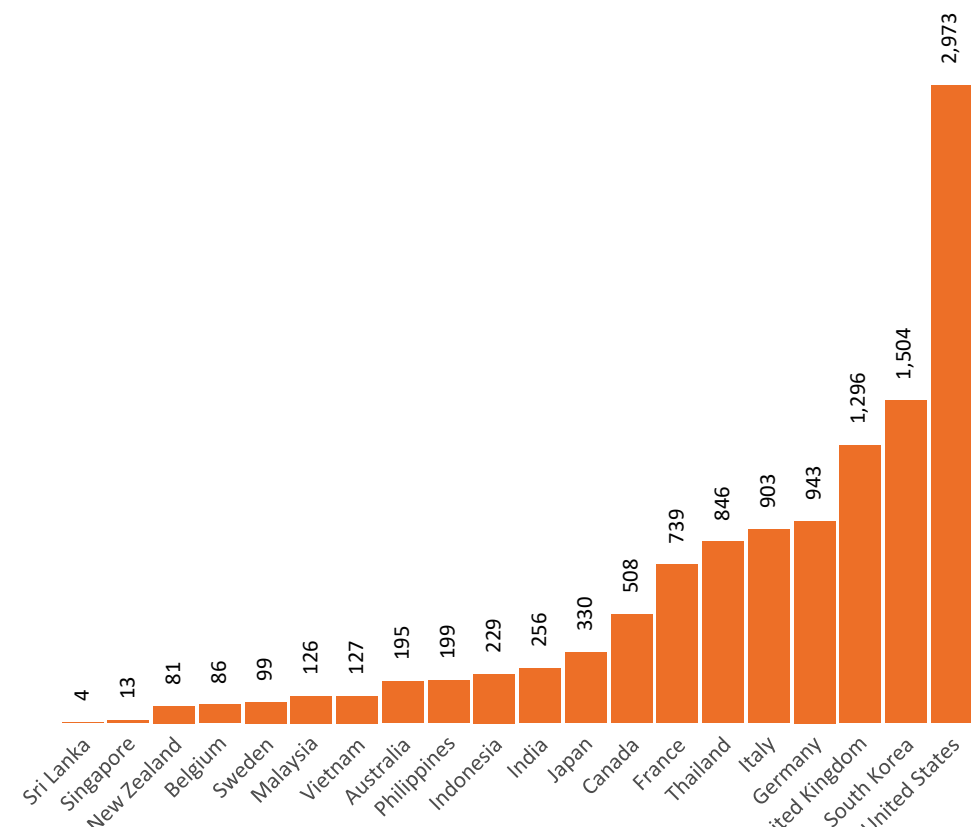
# International data – COVID-19

New daily cases per million in 2021, Australia and G7 countries  
Smoothed - 7 day average



Source: OWID  
Data downloaded: 20 Apr 2022 09:41  
Latest data: 18 Apr 2022

COVID-19 deaths in past 7 days - Australia and select countries



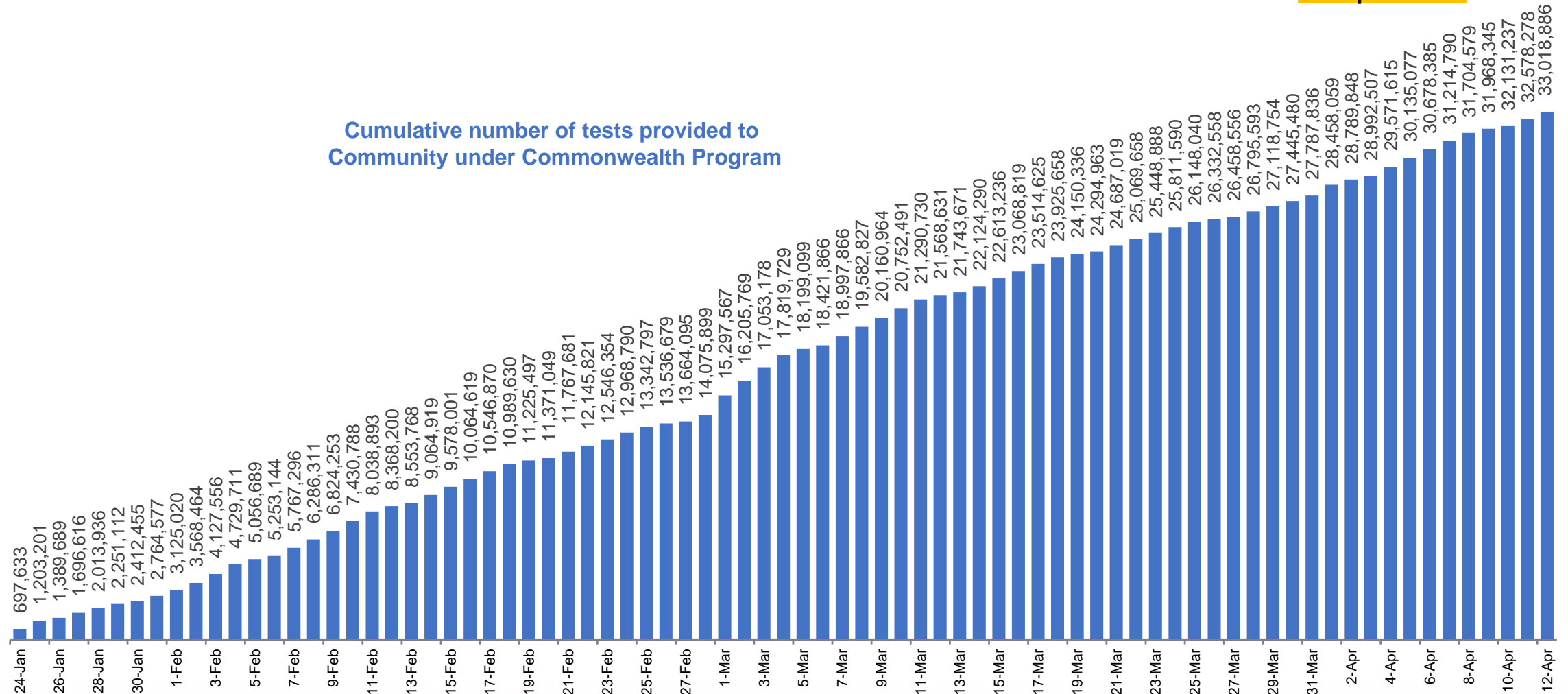
Source: OWID  
Data downloaded: 20 Apr 2022 09:41  
Latest data: 18 Apr 2022

Data as at  
14 April 2022

# Concessional rapid antigen test program

**5,637 pharmacies** have delivered over **33.0 million rapid antigen tests** to more than **4.6m eligible concession card holders** under the Government's concessional rapid antigen test program.

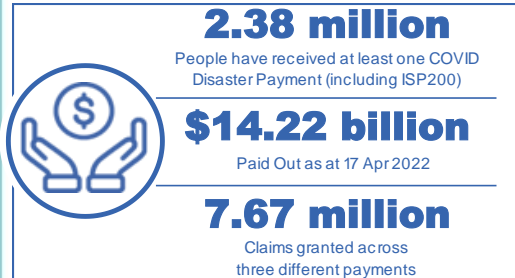
Cumulative number of tests provided to  
Community under Commonwealth Program



# Pandemic Response Payments

Australia's COVID-19  
Vaccine Roadmap

Data as at midnight: 17 Apr 2022  
Updated weekly



<b>COVID Disaster Payment:</b>	5.89 million claims received - 2.19 million individuals paid a total of \$12.59 billion.
<b>\$200 Income Support Payment:</b>	353,000 claims received - 183,000 individuals paid a total of \$268.9 million.
<b>Pandemic Leave Disaster Payment:</b>	1.92 million claims received - 1.18 million individuals paid a total of \$1.35 billion.



## COVID Disaster Payment

assisting during a lockdown event in a Commonwealth hotspot.

## Income Support Payment \$200

for income support recipients who lost at least 8 hours of work.

## Pandemic Leave Disaster Payment

for those who have to self-isolate, quarantine or care.

For more information visit:  
[servicesaustralia.gov.au](https://servicesaustralia.gov.au)

## COVID-19 DISASTER PAYMENTS

### Northern Territory

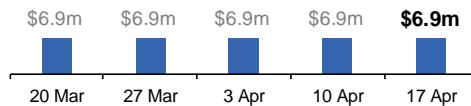
Lockdown (#3) from 16 Nov to 22 Nov  
Claiming period ended 27 Dec

**7,500 people have received at least one COVID Disaster Payment.**

**\$6.9m paid out as at 17 Apr 2022.**

**Nil paid in initial payments in the week ending 17 Apr 2022.**

Cumulative payments made by Territory since activation on 25 Aug 2021.



### Victoria

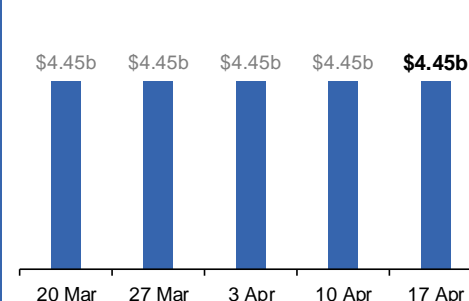
Lockdown (#6) from 6 Aug to 28 Oct  
Claiming period ended 9 Dec

**745,000 people have received at least one COVID Disaster Payment.**

**\$4.45b paid out as at 17 Apr 2022.**

**Nil paid in initial and reoccurring payments in the week ending 17 Apr 2022.**

Cumulative payments made by State since activation on 8 Jun 2021.



### New South Wales

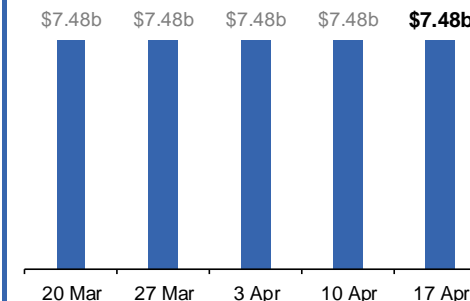
Lockdown from 24 Jun to 10 Oct  
Claiming period ended 27 Nov

**1.08m people have received at least one COVID Disaster Payment.**

**\$7.48b paid out as at 17 Apr 2022.**

**Nil paid in initial and reoccurring payments in the week ending 17 Apr 2022.**

Cumulative payments made by State since activation on 1 Jul 2021.



### Australian Capital Territory

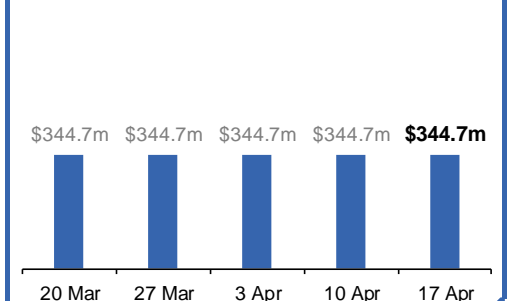
Lockdown from 12 Aug to 14 Oct  
Claiming period ended 25 Nov

**65,000 people have received at least one COVID Disaster Payment.**

**\$344.7m paid out as at 17 Apr 2022.**

**Nil paid in initial and reoccurring payments in the week ending 17 Apr 2022.**

Cumulative payments made by Territory since activation on 20 Aug 2021.



# Pandemic Response Payments (continued)

Data as at midnight: 17 Apr 2022  
Updated weekly

## COVID-19 DISASTER PAYMENTS

### Tasmania

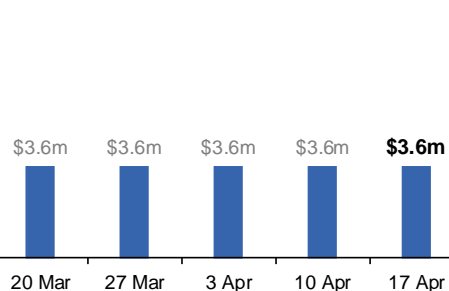
Lockdown from 15 Oct to 18 Oct  
Claiming period ended 12 Nov

**6,900 people have received at least one COVID Disaster Payment.**

**\$3.6m paid out as at 17 Apr 2022.**

**Nil paid in initial and reoccurring payments in the week ending 17 Apr 2022.**

Cumulative payments made by State since activation on 22 Oct 2021.



### Queensland

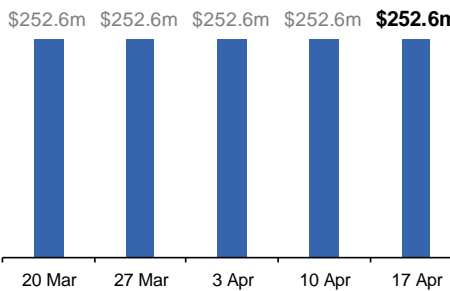
Lockdown from 31 Jul to 11 Aug  
Claiming period ended 28 Aug

**196,000 people have received at least one COVID Disaster Payment.**

**\$252.6m paid out as at 17 Apr 2022.**

**Nil paid in initial and reoccurring payments in the week ending 17 Apr 2022.**

Cumulative payments made by State since activation on 7 Aug 2021.



### South Australia

Lockdown from 21 to 27 Jul  
Claiming period ended 17 Aug

**86,000 people have received at least one COVID Disaster Payment.**

**\$48.2m paid out as at 17 Apr 2022.**

**Nil paid in initial and reoccurring payments in the week ending 17 Apr 2022.**

Cumulative payments made by State since activation on 28 Jul 2021.

