



Australian Government
Operation COVID Shield

COVID-19 Vaccine Roll-out

02 April 2022

Data as at:
01 Apr 2022

Total vaccine doses



56,546,314 total vaccine
doses administered nationally as at 01 April
+62,216 recorded in the last 24 hours



19,965,432

people have had at least one
dose

>95%

of people over the age of 16
have had at least one dose



19,622,664

people are fully vaccinated

>95%

of people over the age of 16 are
fully vaccinated



12,947,025

people over the age of 16
who have received more
than two doses

NSW
17,561,714
(+18,568 daily
increase)

VIC
14,906,291
(+13,270 daily
increase)

QLD
10,713,115
(+11,940 daily
increase)

WA
6,183,809
(+9,052 daily
increase)

TAS
1,271,085
(+1,556 daily
increase)

SA
3,894,858
(+4,626 daily
increase)

ACT
1,461,448
(+2,047 daily
increase)

NT
553,994
(+1,157 daily
increase)

*Administration state breakdown indicates state in which a vaccine was administered

**Overall dose count includes instances of more than three doses per person in a small number of cases.

Source: Australian Immunisation Register

Booster Vaccinations

Australia's COVID-19
Vaccine Roadmap

Data as at:
01 Apr 2022



192,264

Indigenous people who have
received more than two doses

52.1%

of eligible population (369,382)



163,760

Aged Care Residents who have
received more than two doses##

94.2%

of eligible population (173,909)



174,873

NDIS participants

20,672

NDIS residents

who have received more than two doses#

72.7%

of eligible population
(240,000)

87.3%

of eligible population
(23,000)



12,947,025 total people who
have received more than two doses nationally

+35,078 recorded in the last 24 hours

68.2% of people who are eligible (18,995,312)
have received more than two doses

NSW	People	% of Eligible
Cumulative	3,961,965	64.3%
Daily increase	10,741	

VIC	People	% of Eligible
Cumulative	3,498,249	69.7%
Daily increase	6,877	

QLD	People	% of Eligible
Cumulative	2,240,717	62.3%
Daily increase	6,691	

WA	People	% of Eligible
Cumulative	1,562,824	86.5%
Daily increase	5,179	

SA	People	% of Eligible
Cumulative	916,529	71.8%
Daily increase	2,505	

TAS	People	% of Eligible
Cumulative	294,420	71.4%
Daily increase	1,169	

ACT	People	% of Eligible
Cumulative	259,344	75.5%
Daily increase	508	

NT	People	% of Eligible
Cumulative	111,102	69.1%
Daily increase	729	

101,875 doses administered to persons
residing in other territories or with
missing residential information

*People may belong to multiple groups and could be represented in the above breakdowns multiple times.

NDIS participants data as at 30 March 2022. ## Aged Care Residents data as at 1 April 2022.

Source: Australian Immunisation Register

Vaccinations by residential location

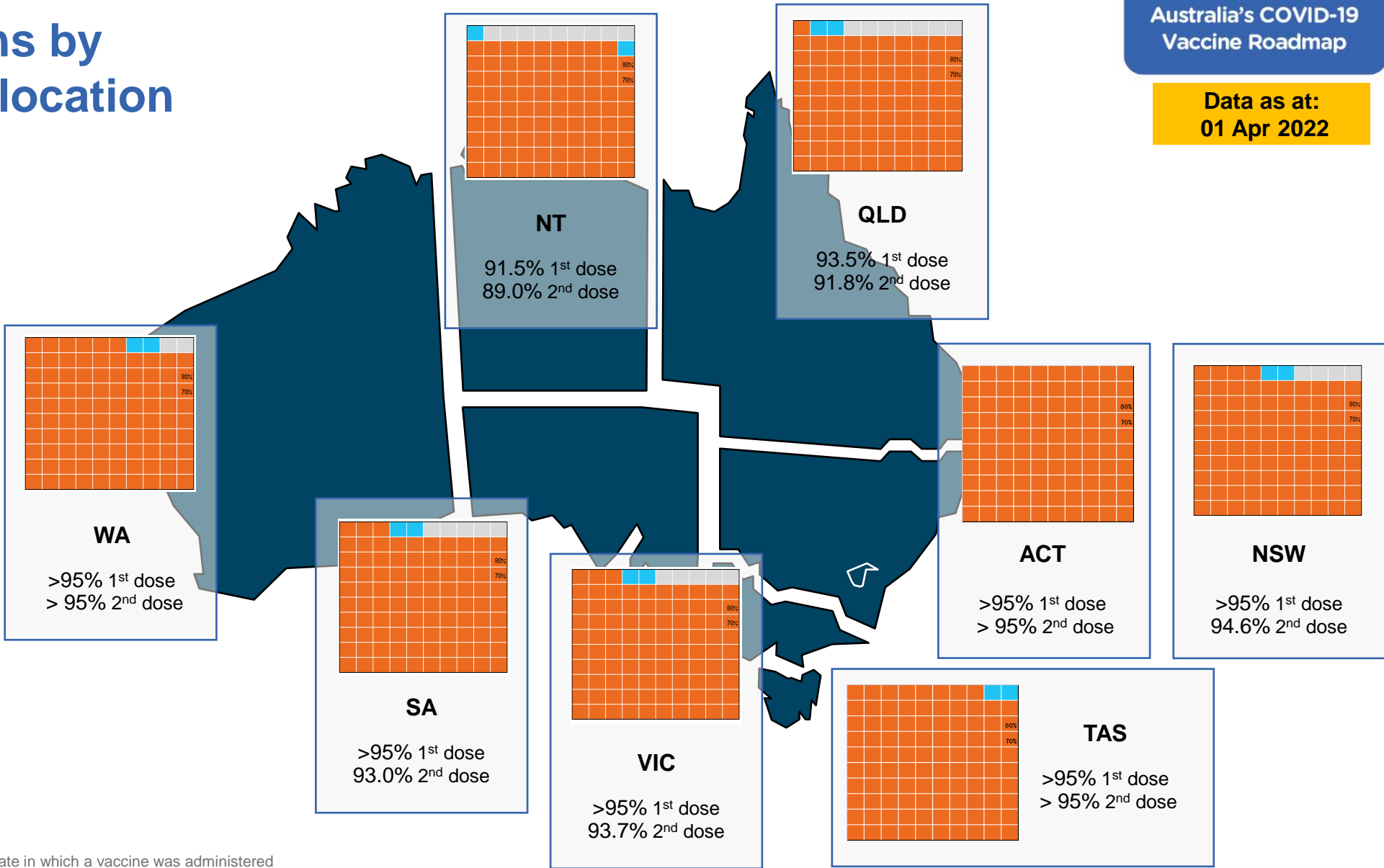
Data as at: 01 Apr 2022

First doses

Age Today	4 weeks ago	8 weeks ago
16+	<95%	<95%
50+	<95%	<95%
70+	<95%	<95%

Fully vaccinated

Age Today	4 weeks ago	8 weeks ago
16+	<95%	94.8%
50+	<95%	<95%
70+	<95%	<95%



*Residential state may differ from the state in which a vaccine was administered

Commonwealth and Jurisdiction vaccine doses administered

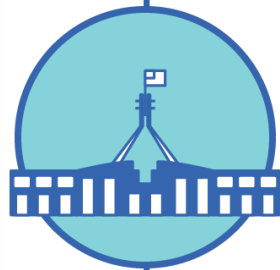
Data as at:
01 Apr 2022



56,546,314 total vaccine
doses administered nationally as at 01 April
+ 62,216 recorded in the last 24 hours



20,751,956
doses administered by state
and territory facilities
+ 13,862
recorded in the last 24 hours



35,794,358
doses administered by
commonwealth facilities
+ 48,354
recorded in the last 24 hours

34,527,183 total vaccine doses
administered in primary care settings
1,267,175 total vaccine doses
administered in aged care and disability
settings

NSW	Jurisdictions	Commonwealth
Cumulative	5,054,798	12,506,916
Daily increase	2,717	15,851

VIC	Jurisdictions	Commonwealth
Cumulative	5,988,202	8,918,089
Daily increase	2,823	10,447

QLD	Jurisdictions	Commonwealth
Cumulative	3,803,159	6,909,956
Daily increase	2,234	9,706

WA	Jurisdictions	Commonwealth
Cumulative	2,445,692	3,738,117
Daily increase	2,263	6,789

TAS	Jurisdictions	Commonwealth
Cumulative	611,189	659,896
Daily increase	457	1,099

SA	Jurisdictions	Commonwealth
Cumulative	1,769,649	2,125,209
Daily increase	1,610	3,016

ACT	Jurisdictions	Commonwealth
Cumulative	754,076	707,372
Daily increase	1,207	840

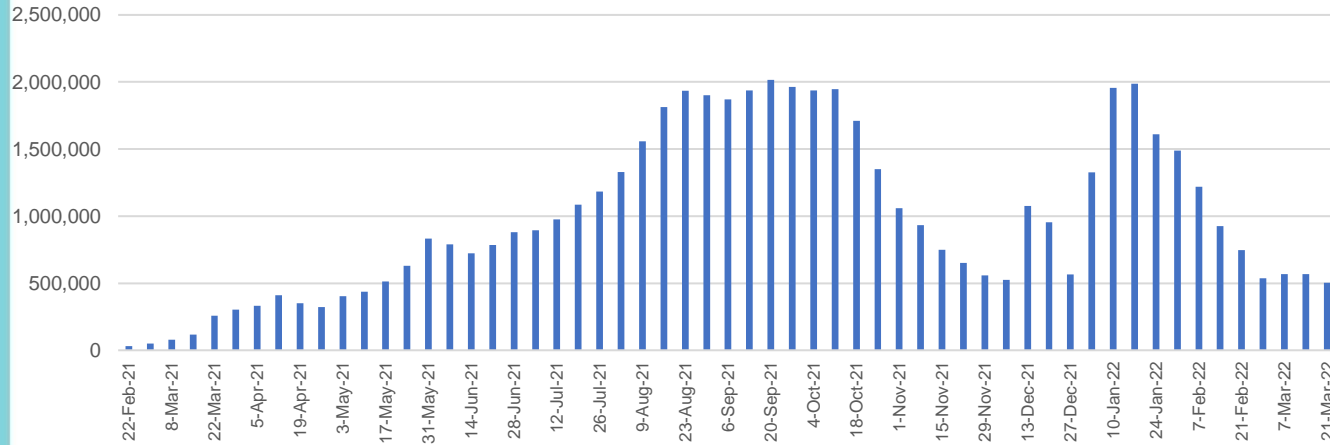
NT	Jurisdictions	Commonwealth
Cumulative	325,191	228,803
Daily increase	551	606

Vaccine milestone charts

Data as at:
01 Apr 2022

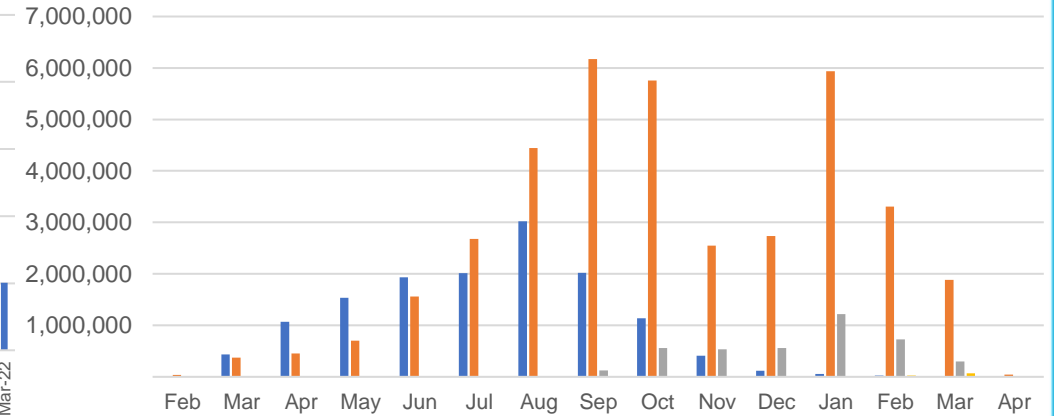
Australia's COVID-19
Vaccine Roadmap

Doses Administered by Week

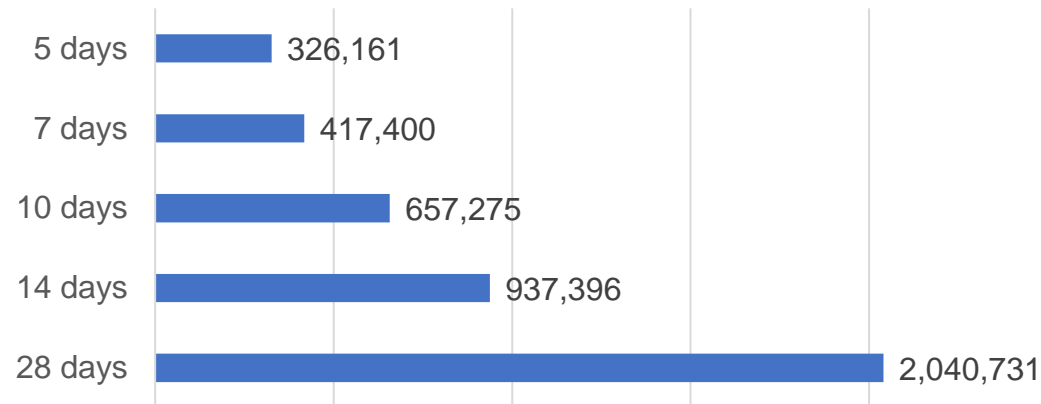


Doses by administration month and vaccine type

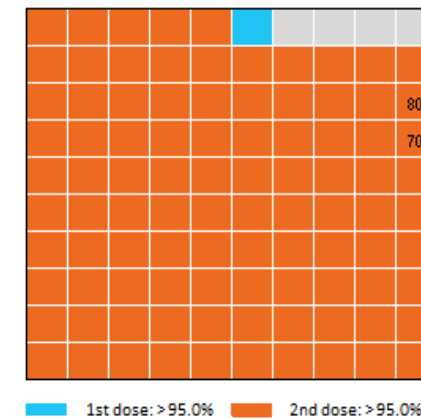
AZ - Vaxzevria Pfizer Moderna Novavax



Doses Reported



Eligible population percentage coverage



*Each square represents 1% of the national population.
Squares are filled as milestones are achieved.

*Sourced from the Australian Immunisation Register.

Doses by age and sex

First and second doses by age and sex

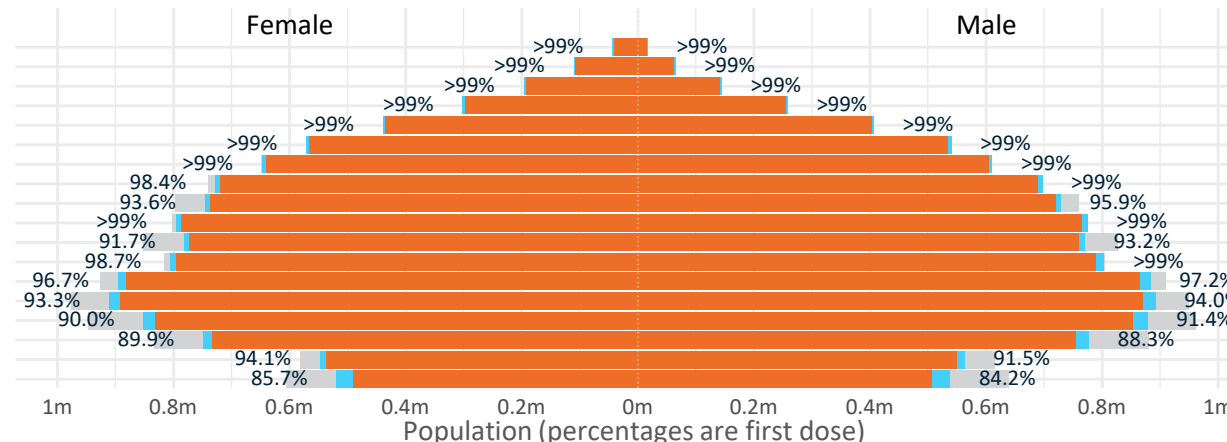
Australia's COVID-19
Vaccine Roadmap

Data as at:
01 Apr 2022

Age	Dose 1	Dose 2
95+	60,458 (>99%)	57,067 (>99%)
90-94	175,083 (>99%)	169,326 (>99%)
85-89	340,759 (>99%)	333,566 (>99%)
80-84	559,933 (>99%)	552,387 (>99%)
75-79	845,884 (>99%)	837,279 (>99%)
70-74	1,112,159 (>99%)	1,101,024 (>99%)
65-69	1,259,504 (>99%)	1,245,039 (99.0%)
60-64	1,426,020 (>99%)	1,409,492 (98.1%)
55-59	1,475,229 (94.8%)	1,458,222 (93.7%)
50-54	1,571,323 (>99%)	1,553,558 (>99%)
45-49	1,552,201 (92.6%)	1,532,554 (91.4%)
40-44	1,611,437 (>99%)	1,586,246 (97.9%)
35-39	1,783,210 (97.2%)	1,750,102 (95.4%)
30-34	1,810,045 (94.1%)	1,767,367 (91.9%)
25-29	1,739,842 (91.3%)	1,691,892 (88.7%)
20-24	1,531,669 (89.5%)	1,491,907 (87.1%)
16-19	1,110,676 (92.9%)	1,085,636 (90.8%)
12-15	1,057,015 (85.0%)	996,816 (80.1%)

	16+	50+	12-15	5-11
Dose 1	96.83% (19,965,432 doses / 20,619,959 people)	>99% (8,826,352 doses / 8,749,703 people)	84.97% (1,057,015 doses / 1,243,990 people)	52.36% (1,191,998 doses / 2,276,638 people)
Dose 2	95.16% (19,622,664 doses / 20,619,959 people)	>99% (8,716,960 doses / 8,749,703 people)	80.13% (996,816 doses / 1,243,990 people)	28.16% (641,007 doses / 2,276,638 people)

■ Dose 1 ■ Dose 2 ■ Population

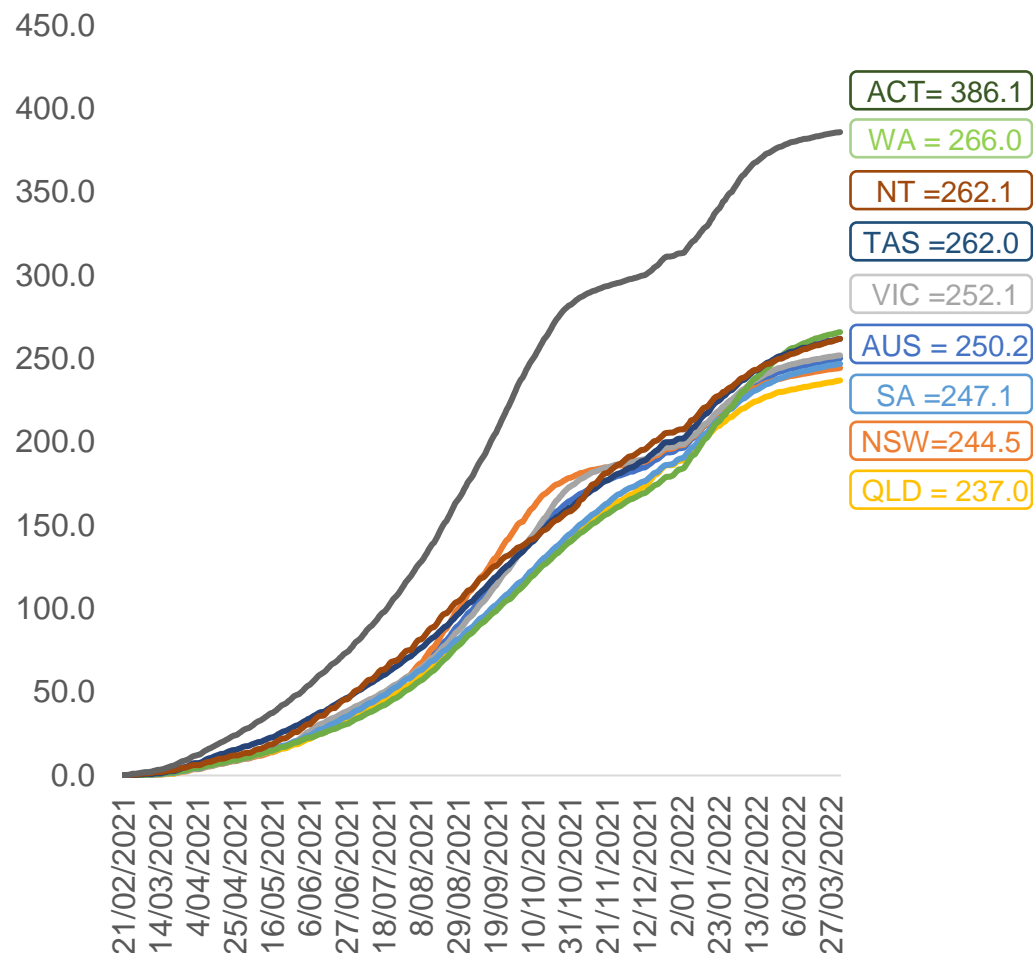


	AUS	ACT	NSW	NT	QLD	SA	TAS	VIC	WA
16 and over - dose 1	19,965,432	351,640	6,305,387	174,351	3,844,098	1,370,329	443,530	5,143,816	2,085,635
16 and over - dose 2	19,622,664	346,218	6,210,559	169,560	3,775,458	1,339,407	434,070	5,067,728	2,049,564
16 and over - population	20,619,959*	344,037	6,565,651	190,571	4,112,707	1,440,400	440,172	5,407,574	2,114,978
16 and over % with dose 1	96.83%	>99%	96.04%	91.49%	93.47%	95.14%	>99%	95.12%	98.61%
16 and over % with dose 2	95.16%	>99%	94.59%	88.97%	91.80%	92.99%	98.61%	93.72%	96.91%
5 to 11 - dose 1	1,191,998	31,809	354,834	13,160	208,223	84,014	28,703	324,684	139,083
5 to 11 - dose 2	641,007	21,820	197,683	6,145	112,079	46,253	18,829	171,857	63,388
5 to 11 - population	2,276,638	39,789	716,460	24,750	478,731	148,816	45,033	578,499	244,154
5 to 11 % with dose 1	52.36%	79.94%	49.53%	53.17%	43.49%	56.45%	63.74%	56.13%	56.97%
5 to 11 % with dose 2	28.16%	54.84%	27.59%	24.83%	23.41%	31.08%	41.81%	29.71%	25.96%
12 to 15 - dose 1	1,057,015	20,105	325,770	10,914	207,603	68,518	22,928	276,185	115,739
12 to 15 - dose 2	996,816	19,459	310,425	9,789	193,735	64,635	21,741	263,276	105,696
12 to 15 - population	1,243,990	19,693	390,330	13,060	270,146	82,747	26,308	308,611	132,869
12 to 15 % with dose 1	84.97%	>99%	83.46%	83.57%	76.85%	82.80%	87.15%	89.49%	87.11%
12 to 15 % with dose 2	80.13%	98.81%	79.53%	74.95%	71.71%	78.11%	82.64%	85.31%	79.55%

*National population will not equal sum of listed jurisdictions due to a small number of people counted in national population residing in some 'other' territories. Sum of state doses will not add to national total as some records are unable to be geocoded to a State or Territory.
Doses sourced from Australian Immunisation Register, population from ABS ERP June 2020

Vaccinations by location

Cumulative total doses administered vs eligible state populations*

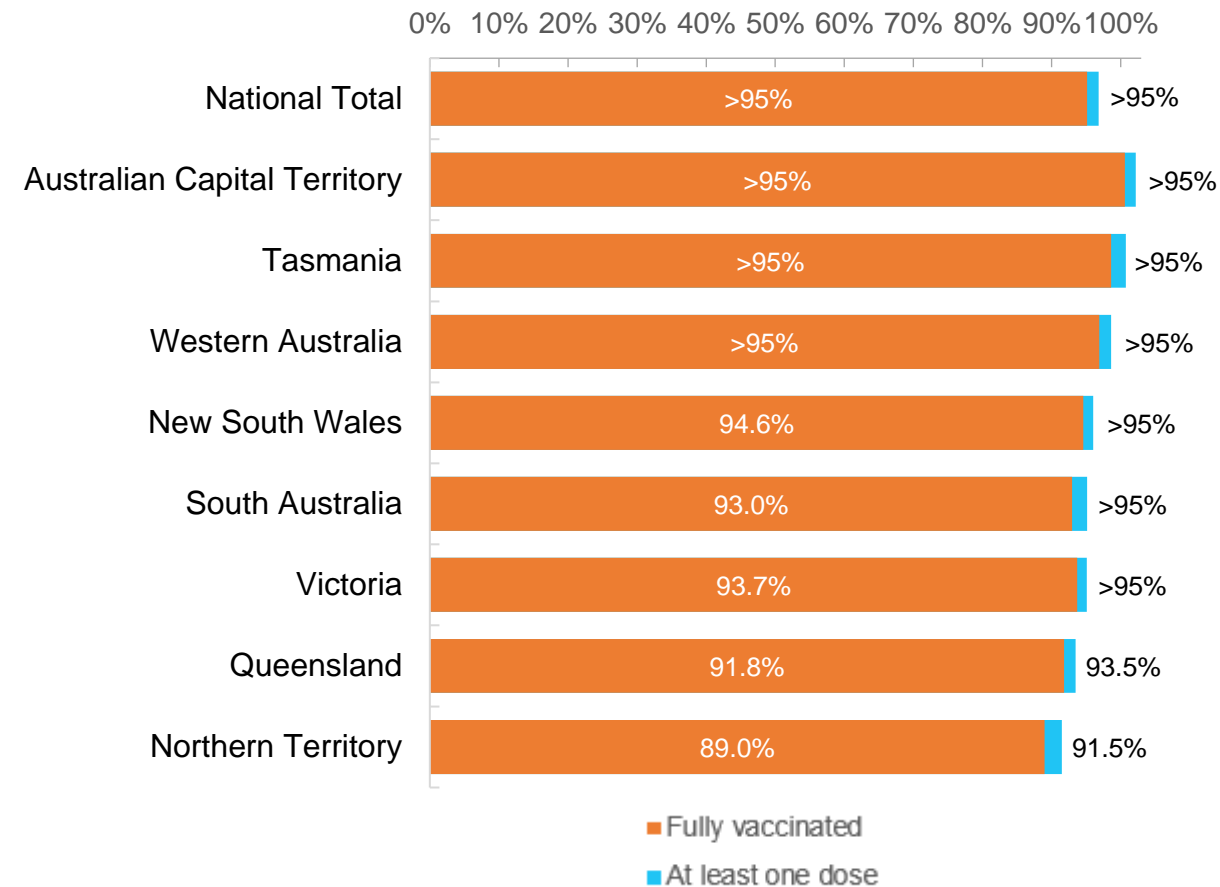


*Not an indication of percentage vaccinated, numbers will exceed 100 due to multiple doses required per person of the population. All doses are included for those aged 12 and above, and are based on vaccination provider location.

Data as at:
01 Apr 2022

Australia's COVID-19
Vaccine Roadmap

First and Second Doses by residential location



Aboriginal and Torres Strait Islander peoples

Number of people vaccinated

Data as at:
29 Mar 2022
Updated weekly

Australia's COVID-19
Vaccine Roadmap



436,084

people over the age of 16
have had at least one dose

84.2%

of people over the age of 16
have had at least one dose



414,780

people over the age of 16
are fully vaccinated

80.0%

of people over the age of 16 are
fully vaccinated



People aged 12 – 15 years

48,579

42,396

68.4%

At least one dose

59.7%

Fully vaccinated

178 Aboriginal community controlled health services (ACCHS)

0#

ACT

50

NSW

27

NT

44

QLD

12

SA

3

TAS

21

VIC

21

WA

Medicare Address State ^{##}	Individuals Dose 1	Individuals Dose 1 %	Individuals Dose 2	Individuals Dose 2 %
Australian Capital Territory	4,832	90.9%	4,709	88.6%
New South Wales	134,469	86.6%	131,243	84.6%
Northern Territory	42,185	89.3%	39,809	84.3%
Queensland	115,088	81.2%	109,024	76.9%
South Australia	19,764	79.6%	18,238	73.4%
Tasmania	13,863	88.4%	13,424	85.6%
Victoria	35,253	89.7%	34,396	87.5%
Western Australia	53,370	85.3%	48,462	77.5%
Unknown/Other Territories	17,260	65.7%	15,475	58.9%
Totals	436,084	84.2%	414,780	80.0%

Source: Australian Immunisation Register

*Identifying as Aboriginal and Torres Strait Islander is optional and the estimated population may be under reported.

**Includes all Aboriginal and Torres Strait Islander peoples who have received a vaccination, not limited to those administered in an ACCHS setting

#ACCHS in the ACT are currently operating as a Commonwealth Vaccine Clinics so not included to avoid double counting

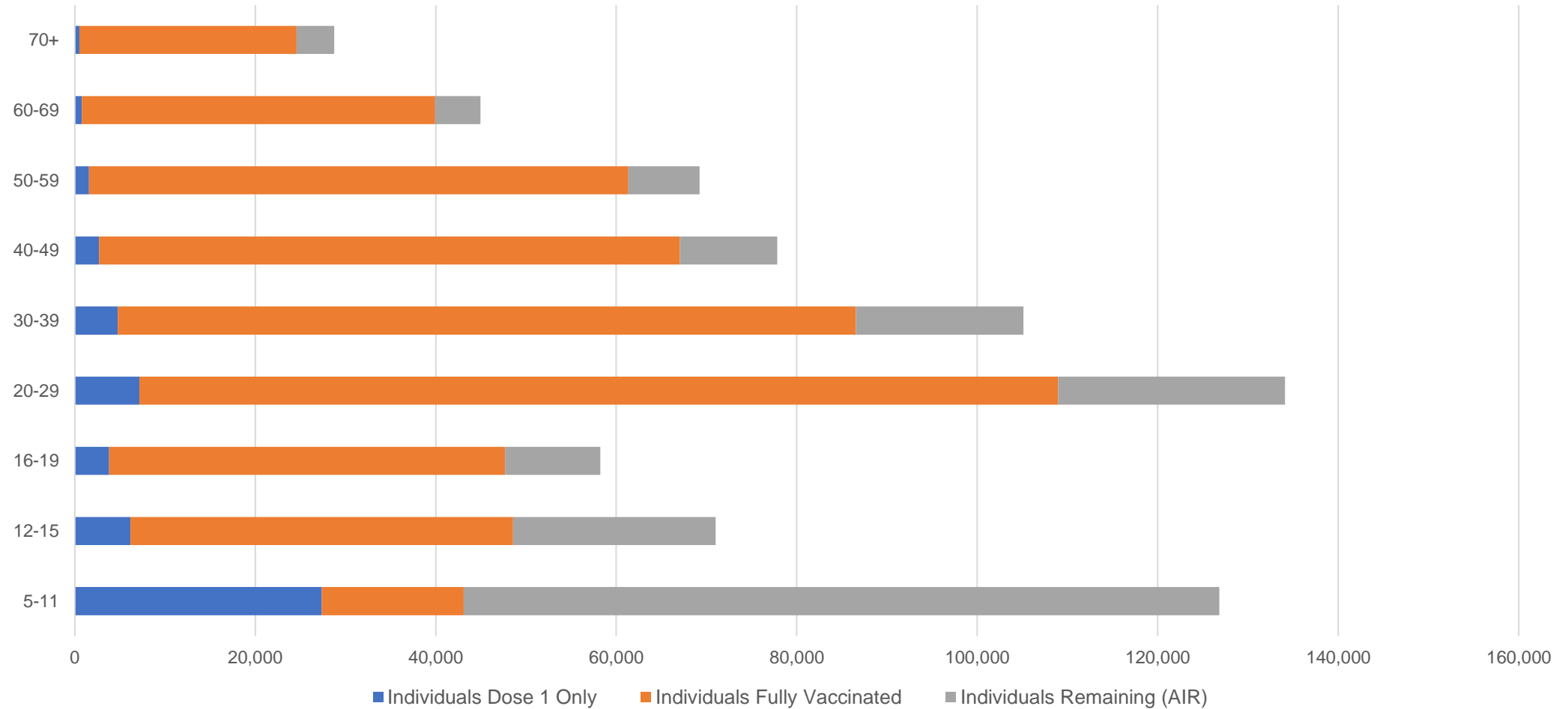
##The above table includes all identified Aboriginal and Torres Strait Islander people who are aged 16 and above by their state of residence.

Aboriginal and Torres Strait Islander peoples

Number of people vaccinated by age

Data as at:
29 Mar 2022
Updated weekly

Australia's COVID-19
Vaccine Roadmap



Source: Australian Immunisation Register

Commonwealth primary care

Data as at:
01 Apr 2022

Australia's COVID-19
Vaccine Roadmap



Primary care vaccine administration sites

5,786	128	178	3,589
GPs	CVCs	ACCHS	Pharmacies



34,527,183 total vaccine doses administered
primary care settings as at 01 April
+ 48,146 recorded in the last 24 hours

Primary care vaccinations by provider type

	Doses administered	Daily increase	7 day increase
General Practice* includes other Commonwealth	27,912,897	30,486	191,106
Pharmacy	6,614,286	17,660	107,937

NSW
11,956,274
(+15,659 daily increase)

VIC
8,608,767
(+9,721 daily increase)

QLD
6,635,220
(+9,245 daily increase)

WA
3,609,459
(+6,798 daily increase)

TAS
640,299
(+1,086 daily increase)

SA
2,047,953
(+2,873 daily increase)

ACT
542,629
(+732 daily increase)

NT
207,311
(+535 daily increase)

279,271

doses administered to persons
residing in other territories or with
missing residential information

*General practice includes Commonwealth Vaccination Clinics, Aboriginal Community Health Centres, Royal Flying Doctor Service and other Commonwealth vaccination facilities

Source: Australian Immunisation Register

Data as at:
01 Apr 2022

Commonwealth aged care and disability doses administered



1,267,175 (+ 208 last 24 hours)

Total vaccine doses administered in aged care and disability facilities as at 01 April

Number of doses administered as part of the Commonwealth aged and disability care rollout

NSW
558,549
(+17 daily increase)

VIC
234,817
(+10 daily increase)

QLD
201,331
(+10 daily increase)

WA
106,812
(+91 daily increase)

TAS
22,463
(-8# daily increase)

SA
83,897
(-8# daily increase)

ACT
16,761
(+22 daily increase)

NT
7,482
(-3# daily increase)

35,063

doses administered to persons
residing in other territories or with
missing residential information

Source: Australian Immunisation Register

*Sourced from the Australian Immunisation Register. Includes all persons vaccinated at participating residential aged care, disability and related industry settings.

**State level breakdown indicates the residential location and may not align to the state in which the vaccination occurred.

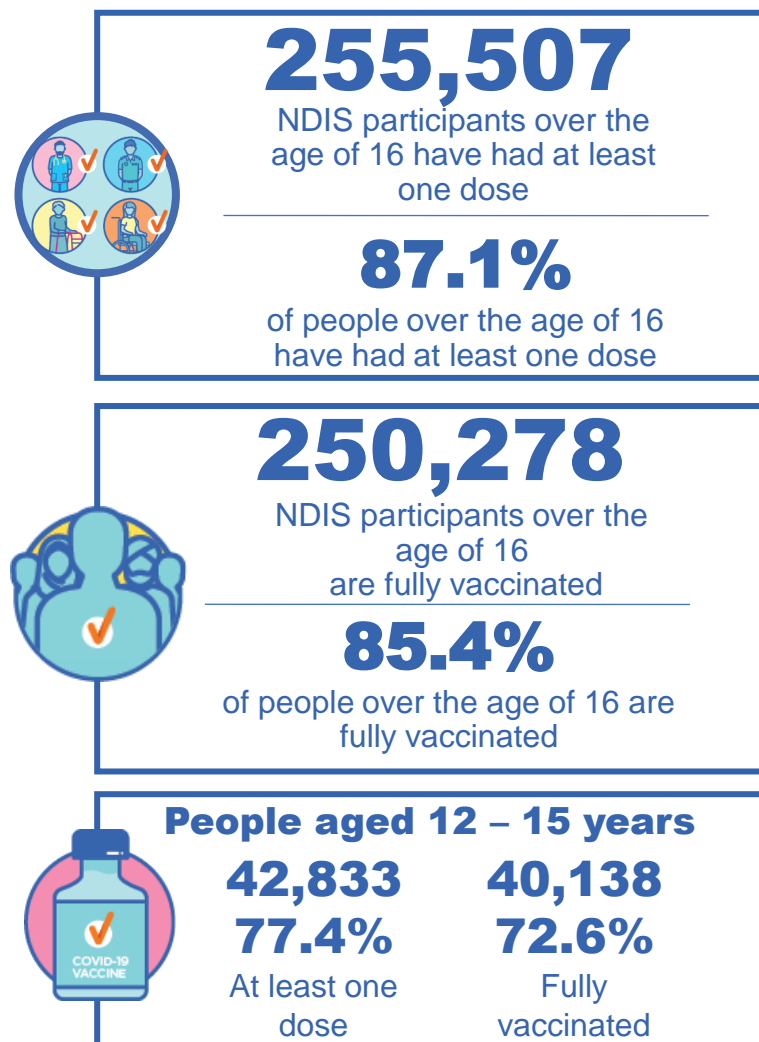
Numbers are calculated as difference in daily cumulative reported numbers to allow for historical corrections in all data sources. This can occasionally result in negative numbers, such as for TAS, SA, and NT where historical details about doses have been updated.

National Disability Insurance Scheme (NDIS) reported vaccinations

Data as at:
31 March 2022
Updated weekly

Australia's COVID-19
Vaccine Roadmap

NDIS participant vaccinations



	People aged 16+ with at least one dose	People aged 16+ fully vaccinated	% People aged 16+ with at least one dose	% People aged 16+ fully vaccinated
ACT	4,840	4,774	89.2%	88.0%
NSW	78,610	77,294	87.6%	86.2%
NT	2,208	2,133	77.4%	74.8%
QLD	50,315	49,233	85.5%	83.7%
SA	20,809	20,248	84.8%	82.5%
TAS	6,408	6,238	87.2%	84.9%
VIC	68,002	66,752	88.3%	86.7%
WA	24,315	23,606	88.3%	85.7%
National	255,507	250,278	87.1%	85.4%

Source: Linkage between National Disability Insurance Agency data and the Australian Immunisation Register. Total NDIS participant numbers as at 28th February. Australian Immunisation Register data as at 30 March. Includes all participants regardless of residence type.

National Disability Insurance Scheme (NDIS) reported vaccinations

Data as at:
31 March 2022
Updated Weekly

Australia's COVID-19
Vaccine Roadmap

NATIONAL	Total people with at least one dose	People fully vaccinated	Total number of individuals in cohort	% People with at least one dose	% People fully vaccinated
NDIS participants living in disability accommodation	20,686	20,315	23,352	88.6%	87.0%

NDIS participants in disability and aged care accommodation



Source: Linkage between National Disability Insurance Agency data and the Australian Immunisation Register. Includes participants residing in disability accommodation only.
Source: Total NDIS participant numbers as at 28th February. Participant data as at 29 March. Australian Immunisation Register data as at 30 March. Worker data as at 31 March.

NDIS workforce vaccinations

	NDIS workers with at least one dose	NDIS workers fully vaccinated	% NDIS workers with at least one dose	% NDIS workers fully vaccinated
NSW	121,300	117,509	98.1%	95.1%
VIC	116,416	111,987	98.3%	94.6%
QLD	69,423	68,592	97.5%	96.3%
WA	32,844	30,848	98.6%	92.6%
SA	35,416	31,990	98.5%	89.0%
TAS	10,778	10,503	99.7%	97.2%
ACT	3,523	3,492	99.1%	98.2%
NT	3,378	3,205	97.4%	92.4%
TOTAL	393,078	378,126	98.2%	94.5%

Source: the NDIS Commission has established a requirement for registered NDIS providers who provide intensive disability support services to report on the vaccination status of workers they employ, or otherwise engage, to deliver NDIS-funded supports and services, and who are required to be vaccinated in accordance with in-force state and territory public health orders. The statistics reflect data reported to the NDIS Commission by registered NDIS providers and should be considered indicative and subject to change

Note: Some registered NDIS providers are yet to report on the vaccination status of their workforce. The NDIS Commission is working with those providers around reporting requirements.

Remaining workers not included include those exempt from vaccination requirements, workers whose vaccination status is not yet verified by the provider (such as workers on leave) and provider reporting anomalies.

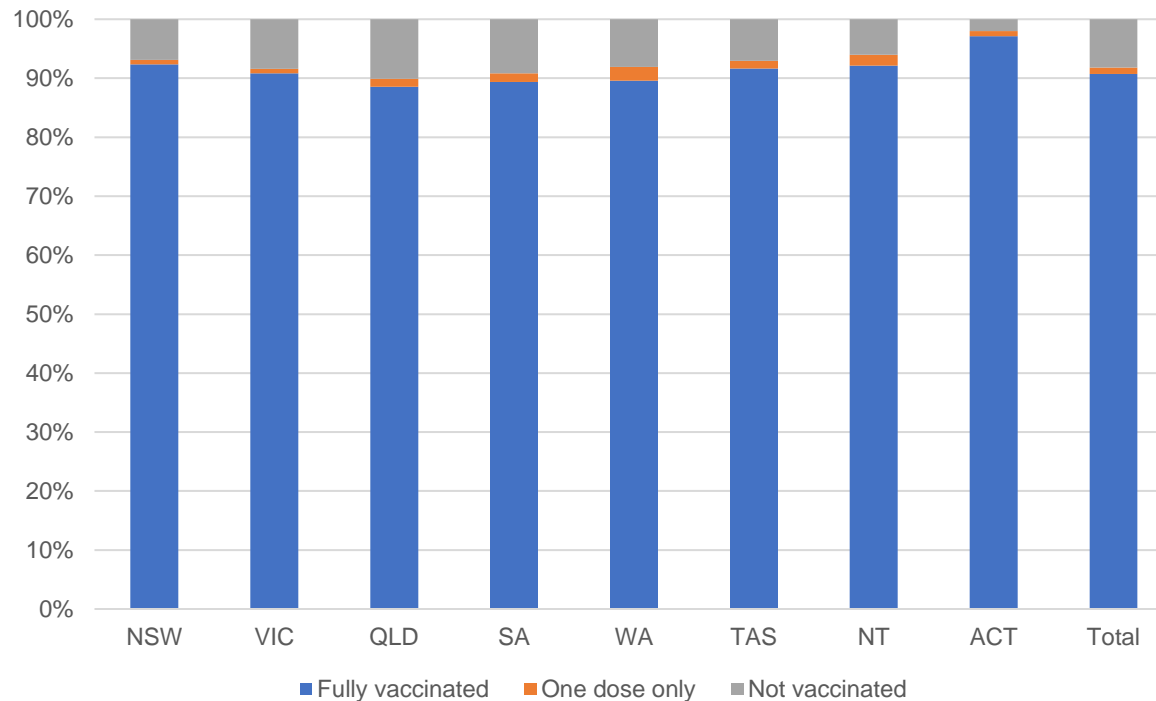
Residential aged care vaccination rollout

Australia's COVID-19
Vaccine Roadmap

Data as at:
31 Mar 2022
Updated weekly



Aged care resident vaccinations



Aged care worker vaccinations

Jurisdictions	Total workers with at least one dose	Workers fully vaccinated	% Workers with at least one dose	% Workers fully vaccinated
NSW	77,436	77,331	97.6%	97.5%
VIC	65,380	65,378	95.3%	95.3%
QLD	46,376	46,370	95.2%	95.2%
SA	26,364	26,344	97.6%	97.5%
WA	23,838	23,836	98.9%	98.9%
TAS	7,645	7,645	100.0%	100.0%
NT	847	847	100.0%	100.0%
ACT	2,987	2,987	100.0%	100.0%
Total	250,873	250,738	96.8%	96.7%

Source: My Aged Care Portal vaccination progress

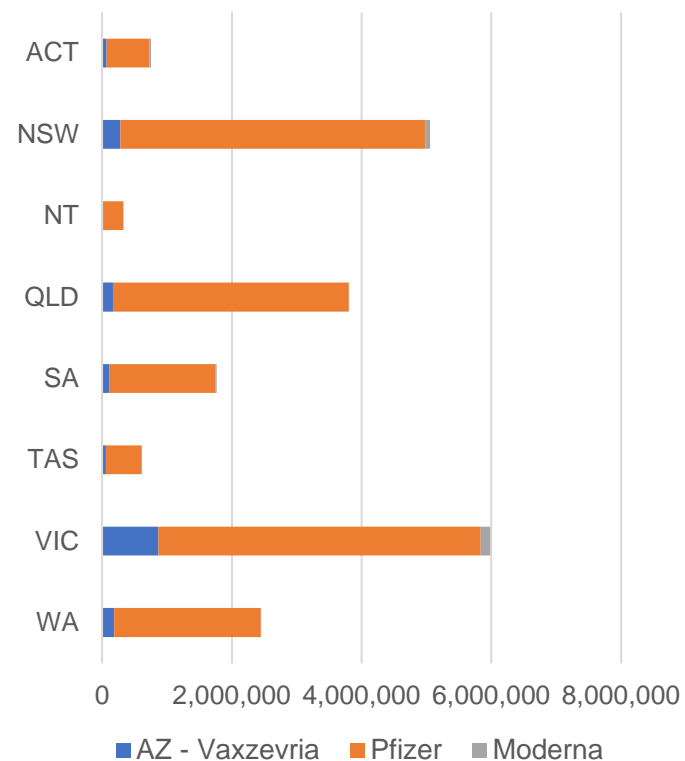
*Status updates are provided by facilities at least once per week. Reporting is updated Monday to Friday to encompass different facility updates being made on different days.

Data is sourced directly from Aged Care Service Providers and is not drawn or closely aligned with data from AIR due to inconsistencies and potential lags in uploading of records.

Data as at:
01 Apr 2022

Jurisdiction administered

Total vaccine doses administered in State and Territory clinics as at 01 April



20,751,956 total vaccine doses administered
in State and Territory clinics as at 01 April
+ **13,862** recorded in the last 24 hours
+ **115,070** recorded in the last 7 days

NSW
5,054,798
(+2,717 daily
increase)

VIC
5,988,202
(+2,823 daily
increase)

QLD
3,803,159
(+2,234 daily
increase)

WA
2,445,692
(+2,263 daily
increase)

TAS
611,189
(+457 daily
increase)

SA
1,769,649
(+1,610 daily
increase)

ACT
754,076
(+1,207 daily
increase)

NT
325,191
(+551 daily
increase)

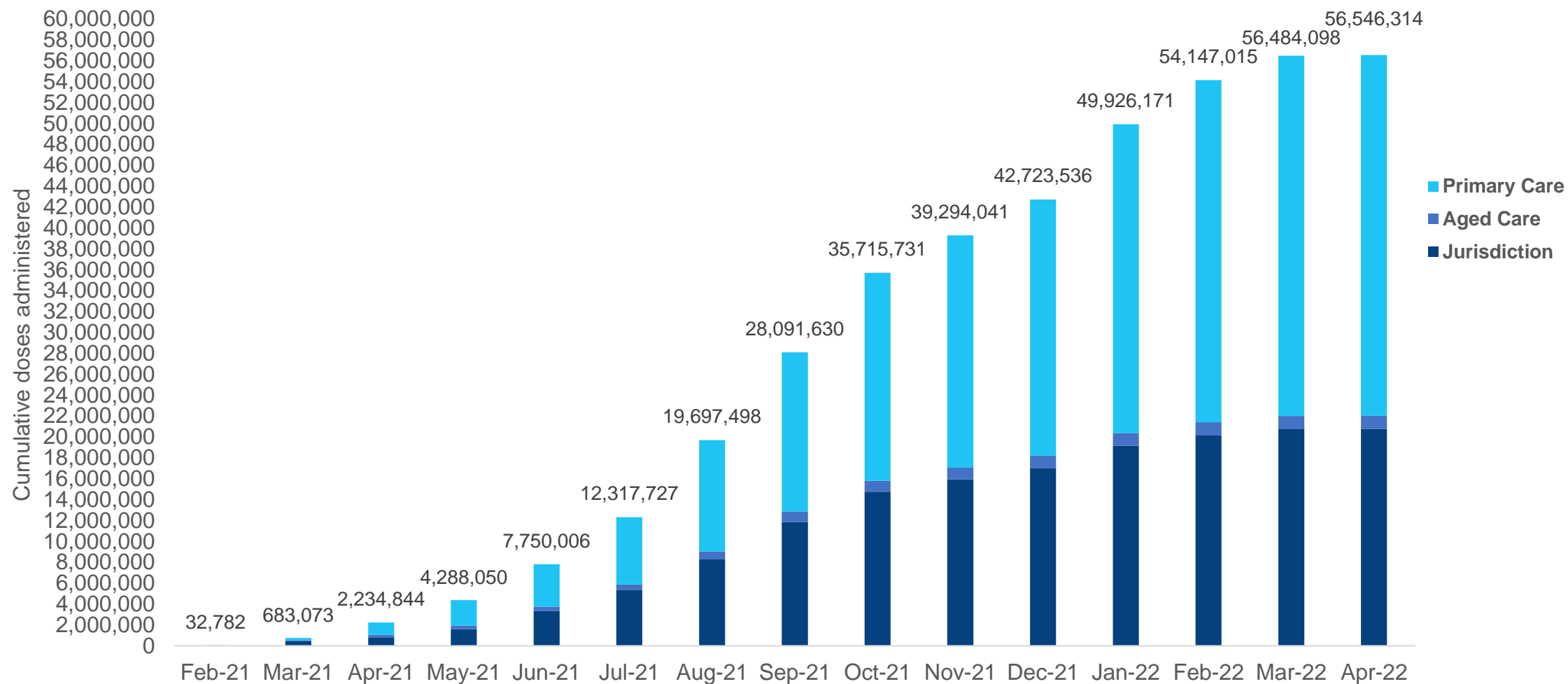
*Sourced from the Australian Immunisation Register. Numbers are calculated as difference in daily cumulative reported numbers to allow for historical corrections.

Source: Australian Immunisation Register

Cumulative doses administered by channel

Data as at:
01 Apr 2022

Australia's COVID-19
Vaccine Roadmap



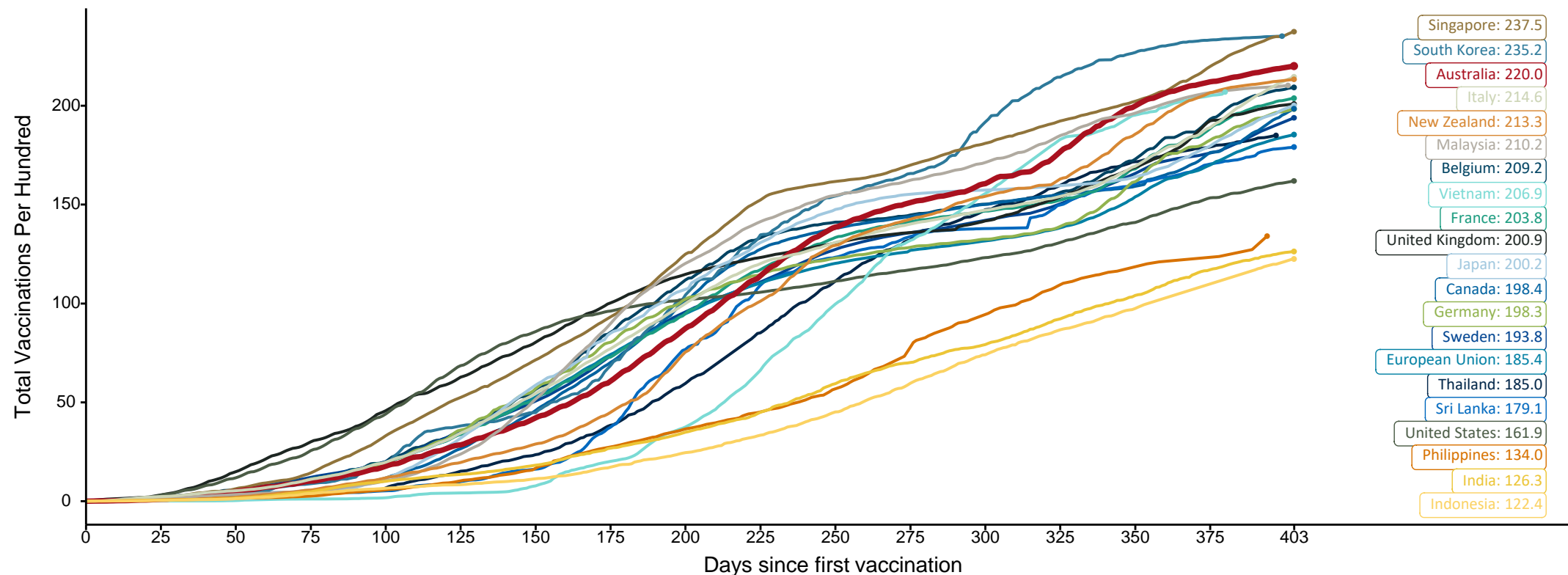
Source: Australian Immunisation Register

Doses at equivalent stages of rollout (Day 403)

Data as at:
01 Apr 2022

The x-axis is truncated at the length of Australia's vaccination program. Countries with intermittent reporting have had their doses per 100 imputed to Australia's current stage of rollout. Israel excluded as it is beyond scale of the graph

Cumulative doses administered (01 Apr): **56,546,314**



Note: From 11 January 2022, data for Australia includes all doses administered to people 5 and over. Prior to 11 January, data was for 12 and over.

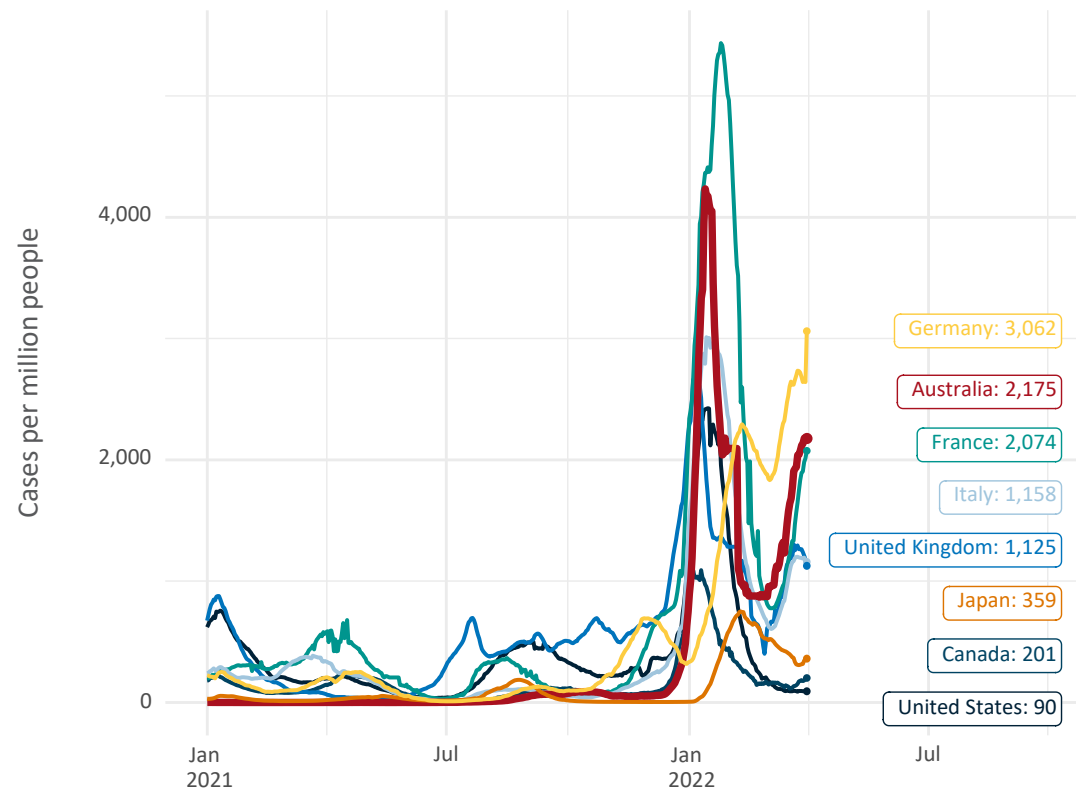
Source: Department of Health (Australia), Our World in Data (international)

Latest data: 01 April

Data as at:
01 Apr 2022

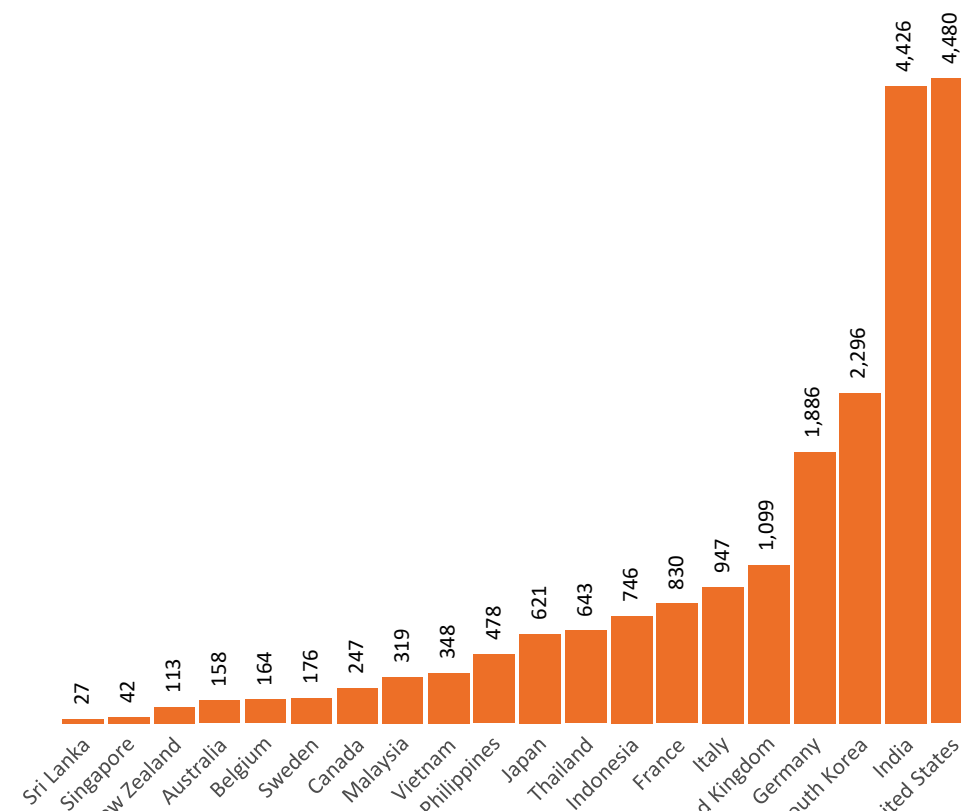
International data – COVID-19

New daily cases per million in 2021, Australia and G7 countries
Smoothed - 7 day average



Source: OWID
Data downloaded: 02 Apr 2022 10:45
Latest data: 31 Mar 2022

COVID-19 deaths in past 7 days - Australia and select countries



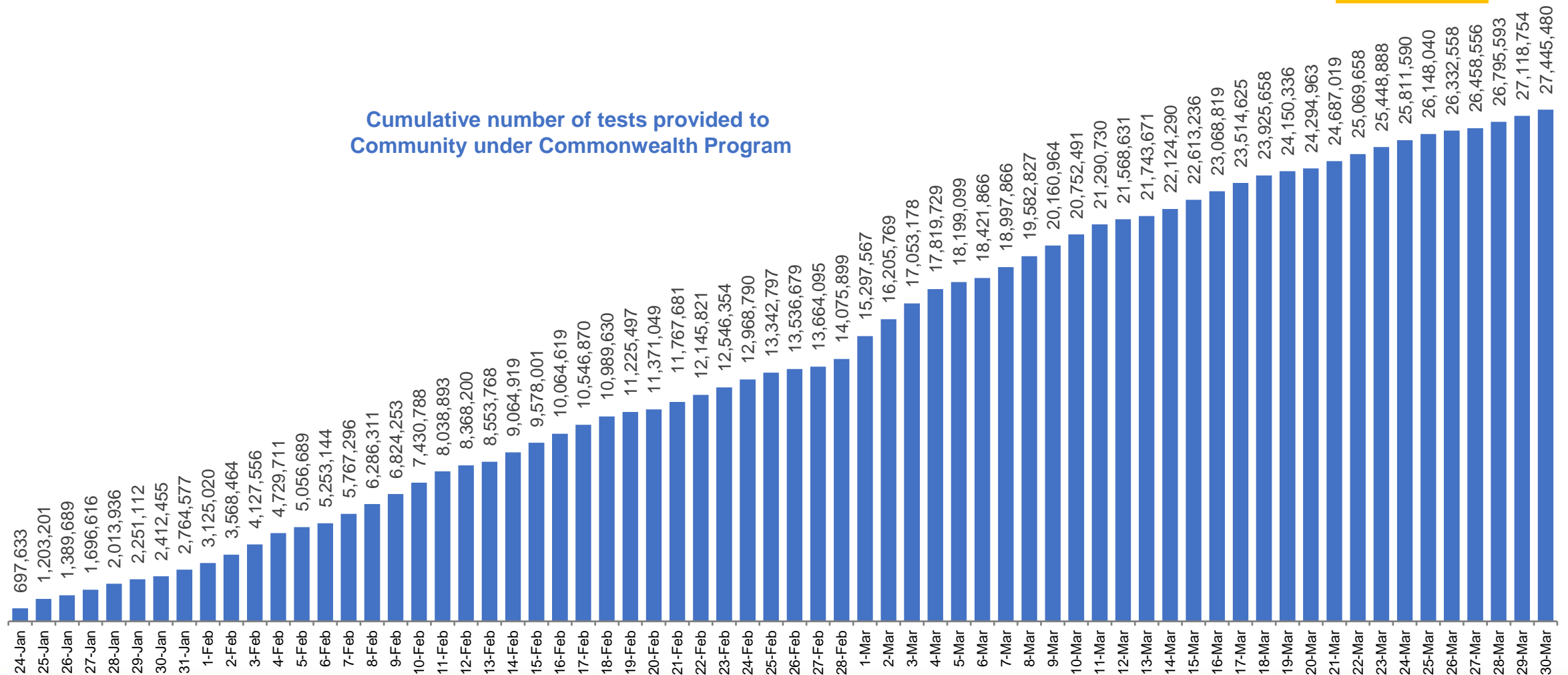
Source: OWID
Data downloaded: 02 Apr 2022 10:45
Latest data: 31 Mar 2022

Data as at:
31 Mar 2022

Concessional rapid antigen test program

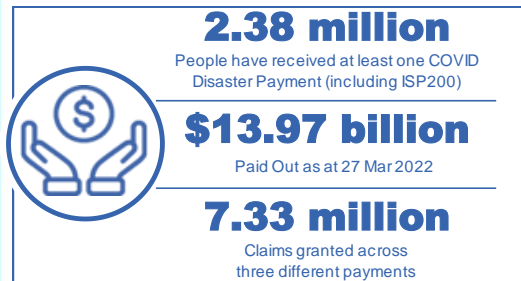
5,620 pharmacies have delivered over 27.4 million rapid antigen tests to more than 4.2m eligible concession card holders under the Government's concessional rapid antigen test program.

Cumulative number of tests provided to
Community under Commonwealth Program



Pandemic Response Payments

Data as at midnight: 27 Mar 2022
Updated weekly



COVID Disaster Payment:	5.89 million claims received - 2.19 million individuals paid a total of \$12.59 billion.
\$200 Income Support Payment:	353,000 claims received - 183,000 individuals paid a total of \$268.9 million.
Pandemic Leave Disaster Payment:	1.59 million claims received - 980,000 individuals paid a total of \$1.11 billion.

THREE PAYMENTS AVAILABLE

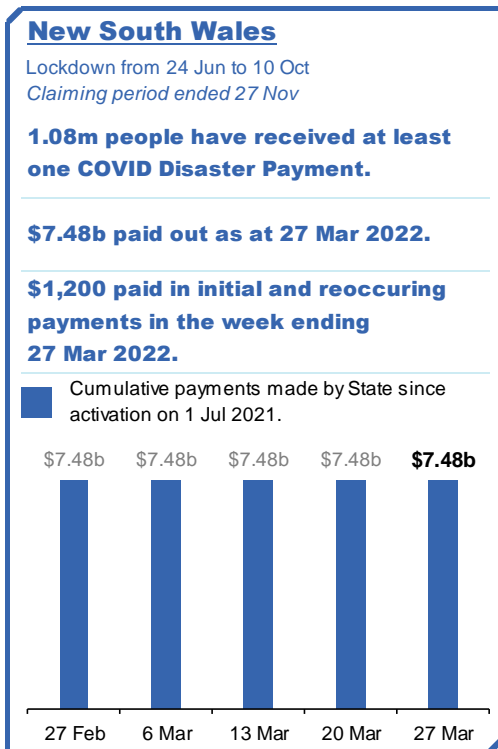
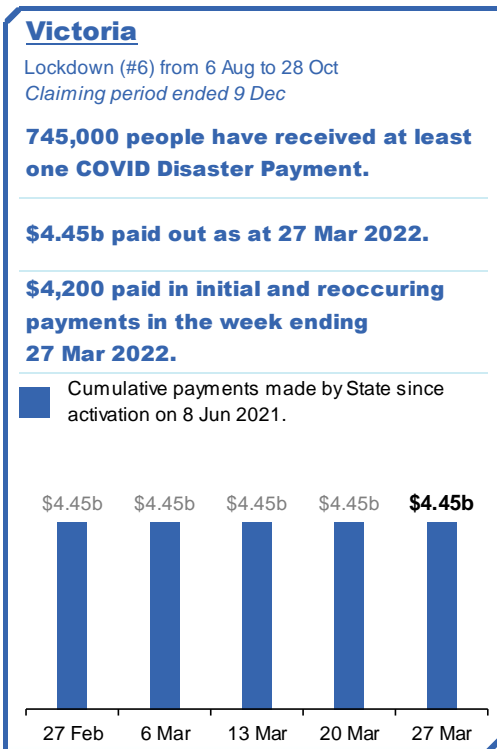
COVID Disaster Payment
assisting during a lockdown event in a Commonwealth hotspot.

Income Support Payment \$200
for income support recipients who lost at least 8 hours of work.

Pandemic Leave Disaster Payment
for those who have to self-isolate, quarantine or care.

For more information visit:
servicesaustralia.gov.au

COVID-19 DISASTER PAYMENTS



Pandemic Response Payments (continued)

Data as at midnight: 27 Mar 2022
Updated weekly

COVID-19 DISASTER PAYMENTS

Tasmania

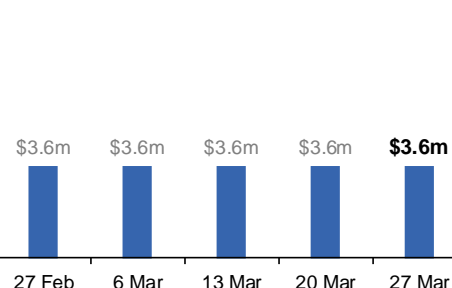
Lockdown from 15 Oct to 18 Oct
Claiming period ended 12 Nov

6,900 people have received at least one COVID Disaster Payment.

\$3.6m paid out as at 27 Mar 2022.

Nil paid in initial and reoccurring payments in the week ending 27 Mar 2022.

Cumulative payments made by State since activation on 22 Oct 2021.



Queensland

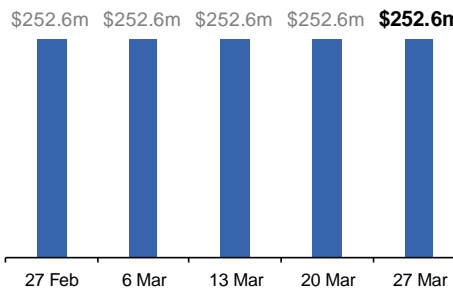
Lockdown from 31 Jul to 11 Aug
Claiming period ended 28 Aug

196,000 people have received at least one COVID Disaster Payment.

\$252.6m paid out as at 27 Mar 2022.

Nil paid in initial and reoccurring payments in the week ending 27 Mar 2022.

Cumulative payments made by State since activation on 7 Aug 2021.



South Australia

Lockdown from 21 to 27 Jul
Claiming period ended 17 Aug

86,000 people have received at least one COVID Disaster Payment.

\$48.2m paid out as at 27 Mar 2022.

Nil paid in initial and reoccurring payments in the week ending 27 Mar 2022.

Cumulative payments made by State since activation on 28 Jul 2021.

