



Australian Government
Operation COVID Shield

COVID-19 Vaccine Roll-out

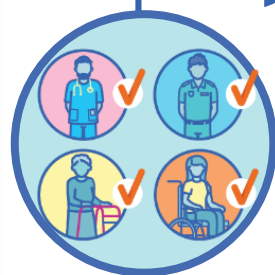
19 April 2022

Data as at:
18 Apr 2022

Total vaccine doses



57,183,741 total vaccine
doses administered nationally as at 18 April
+6,503 recorded in the last 24 hours



19,998,230

people have had at least one
dose

>95%

of people over the age of 16
have had at least one dose



19,661,716

people are fully vaccinated

>95%

of people over the age of 16 are
fully vaccinated



13,252,063

people over the age of 16
who have received more
than two doses

NSW
17,750,968
(+1,676 daily
increase)

VIC
15,054,342
(+1,824 daily
increase)

QLD
10,828,995
(+739 daily
increase)

WA
6,272,715
(+1,186 daily
increase)

TAS
1,286,867
(+574 daily
increase)

SA
3,939,495
(+304 daily
increase)

ACT
1,486,178
(+186 daily
increase)

NT
564,181
(+14 daily
increase)

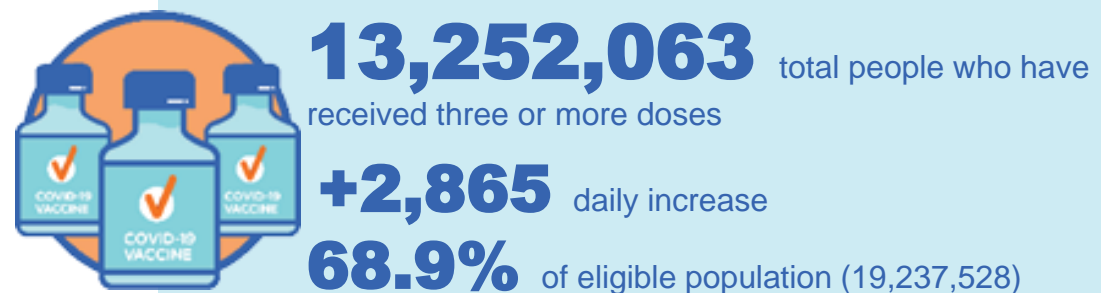
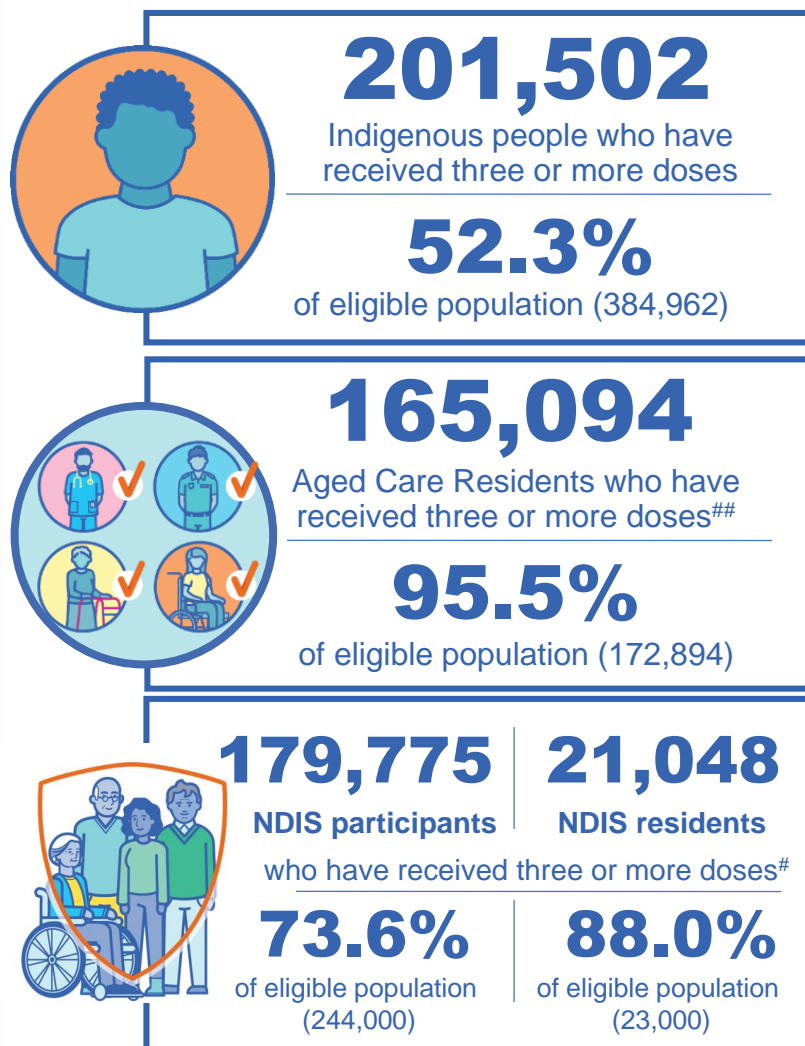
*Administration state breakdown indicates state in which a vaccine was administered

**Overall dose count includes instances of more than three doses per person in a small number of cases.

Source: Australian Immunisation Register

Booster Vaccinations

Data as at:
18 Apr 2022



	Number of People	Daily Increase	% of Eligible
NSW	4,056,449	694	65.7%
VIC	3,559,345	682	70.7%
QLD	2,295,236	397	62.4%
WA	1,608,999	700	85.5%
SA	938,257	157	72.1%
TAS	302,142	205	71.7%
ACT	263,764	21	76.6%
NT	117,102	2	71.6%

*People may belong to multiple groups and could be represented in the above breakdowns multiple times.
NDIS participants data as at 13 April 2022. ## Aged Care Residents data as at 13 April 2022.

Source: Australian Immunisation Register

110,769 doses administered to persons residing in other territories or with missing residential information

Winter / Fourth Doses

Data as at:
18 Apr 2022
Updated weekly

Australia's COVID-19
Vaccine Roadmap



215,070 total people (16+) who have received four or more doses

+52,590 weekly increase

	Number of People 16+	Weekly Increase
ACT	6,722	1,571
NSW	79,715	18,038
NT	1,705	258
QLD	37,432	10,443
SA	13,481	3,569
TAS	5,635	1,658
VIC	53,732	13,097
WA	15,482	3,673

1,166 doses administered to persons
residing in other territories or with
missing residential information

*People may belong to multiple groups and could be represented in the above breakdowns multiple times.

Source: Australian Immunisation Register

Vaccinations by residential location

Australia's COVID-19 Vaccine Roadmap

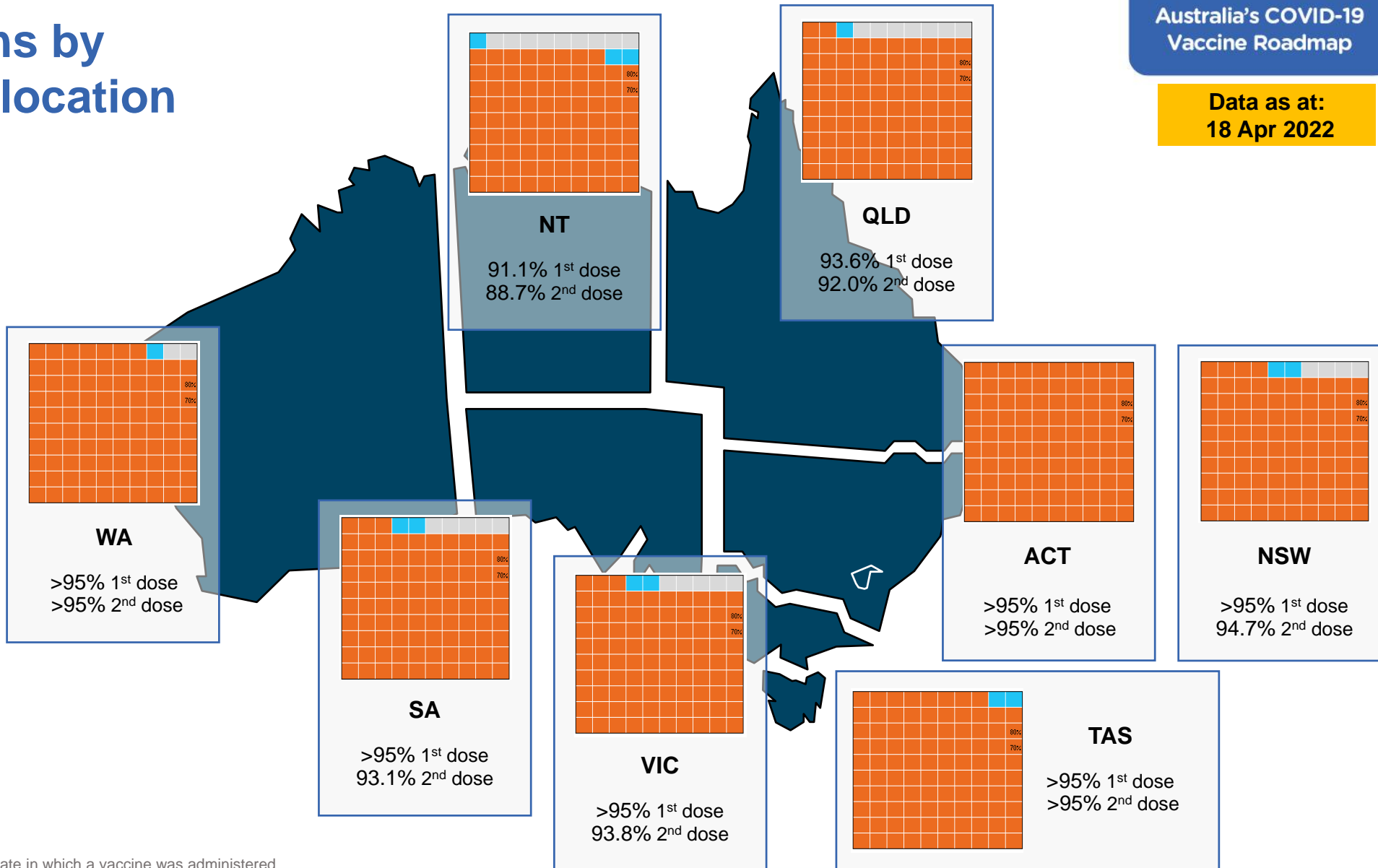
Data as at:
18 Apr 2022

First doses

Age	Today	4 weeks ago	8 weeks ago
16+	>95%	>95%	>95%
50+	>95%	>95%	>95%
70+	>95%	>95%	>95%

Fully vaccinated

Age	Today	4 weeks ago	8 weeks ago
16+	>95%	>95%	94.6%
50+	>95%	>95%	>95%
70+	>95%	>95%	>95%



*Residential state may differ from the state in which a vaccine was administered

Commonwealth and Jurisdiction vaccine doses administered

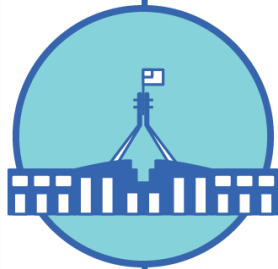
Data as at:
18 Apr 2022



57,183,741 total vaccine
doses administered nationally as at 18 April
+ 6,503 recorded in the last 24 hours



20,920,116
doses administered by state
and territory facilities
+ 2,190
recorded in the last 24 hours



36,263,625
doses administered by
commonwealth facilities
+ 4,313
recorded in the last 24 hours

34,992,806 total vaccine doses
administered in primary care settings
1,270,819 total vaccine doses
administered in aged care and disability
settings

NSW	Jurisdictions	Commonwealth
Cumulative	5,083,706	12,667,262
Daily increase	387	1,289

VIC	Jurisdictions	Commonwealth
Cumulative	6,029,336	9,025,006
Daily increase	455	1,369

QLD	Jurisdictions	Commonwealth
Cumulative	3,828,864	7,000,131
Daily increase	107	632

WA	Jurisdictions	Commonwealth
Cumulative	2,473,273	3,799,442
Daily increase	529	657

TAS	Jurisdictions	Commonwealth
Cumulative	616,872	669,995
Daily increase	467	107

SA	Jurisdictions	Commonwealth
Cumulative	1,787,926	2,151,569
Daily increase	168	136

ACT	Jurisdictions	Commonwealth
Cumulative	768,075	718,103
Daily increase	75	111

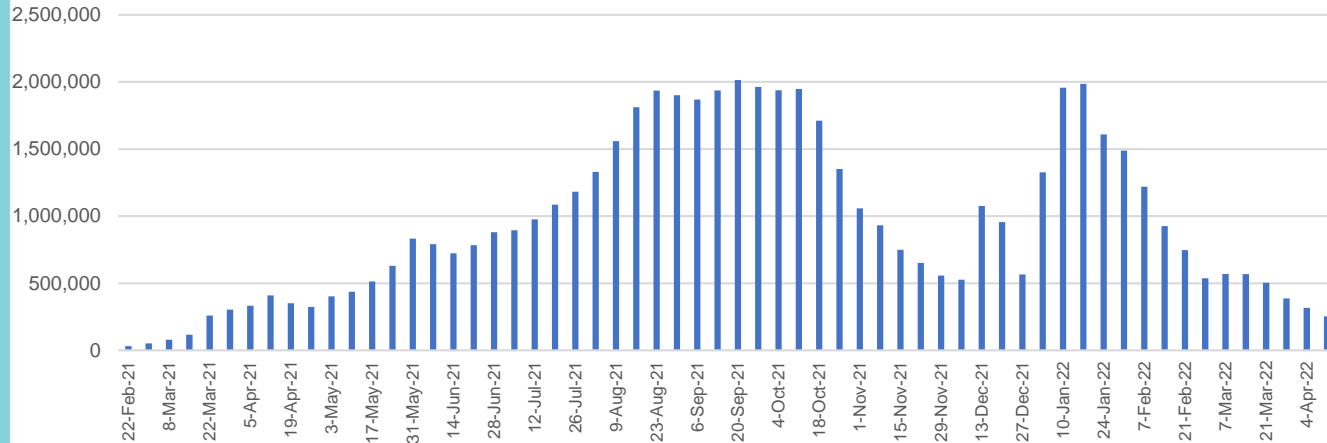
NT	Jurisdictions	Commonwealth
Cumulative	332,064	232,117
Daily increase	2	12

Vaccine milestone charts

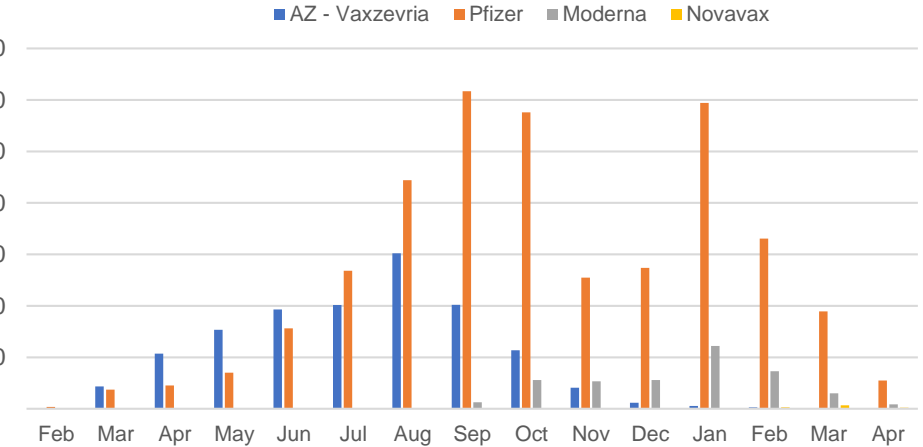
Data as at:
18 Apr 2022

Australia's COVID-19
Vaccine Roadmap

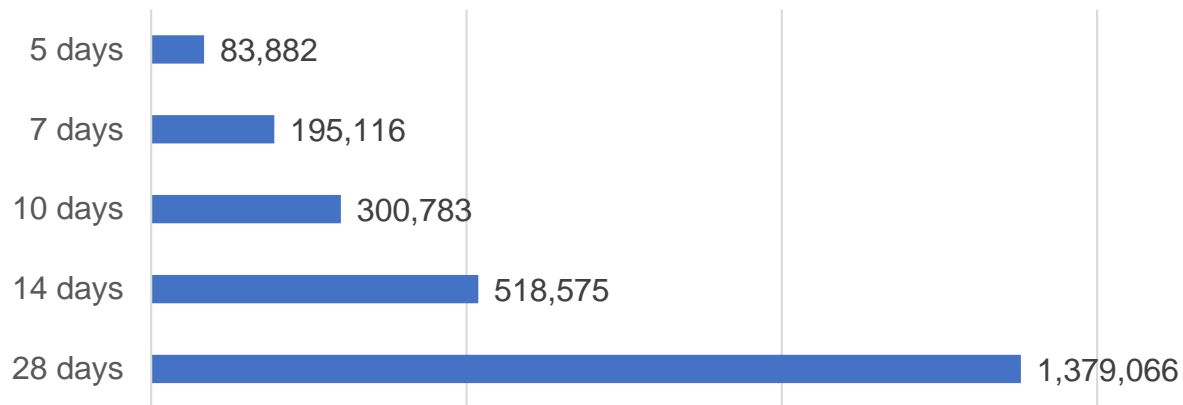
Doses Administered by Week



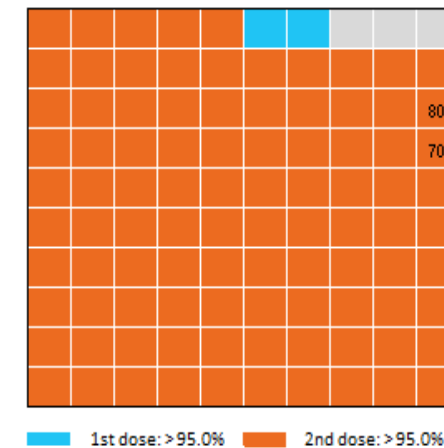
Doses by administration month and vaccine type



Doses Reported



Eligible population percentage coverage



*Each square represents 1% of the national population.
Squares are filled as milestones are achieved.

*Sourced from the Australian Immunisation Register.

Doses by age and sex

First and second doses by age and sex

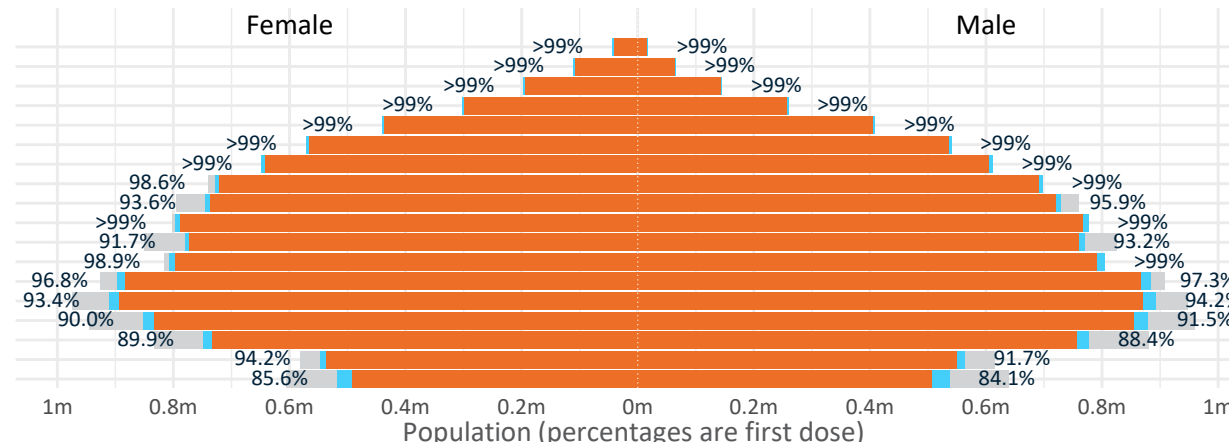
Australia's COVID-19
Vaccine Roadmap

Data as at:
18 Apr 2022

Age	Dose 1	Dose 2
95+	61,447 (>99%)	58,045 (>99%)
90-94	176,468 (>99%)	170,786 (>99%)
85-89	342,783 (>99%)	335,718 (>99%)
80-84	562,440 (>99%)	555,050 (>99%)
75-79	849,978 (>99%)	841,483 (>99%)
70-74	1,113,480 (>99%)	1,102,484 (>99%)
65-69	1,262,087 (>99%)	1,247,780 (>99%)
60-64	1,428,637 (>99%)	1,412,353 (98.3%)
55-59	1,475,276 (94.8%)	1,458,657 (93.8%)
50-54	1,574,442 (>99%)	1,557,206 (>99%)
45-49	1,551,877 (92.6%)	1,532,884 (91.4%)
40-44	1,614,662 (>99%)	1,590,089 (98.1%)
35-39	1,785,954 (97.3%)	1,753,483 (95.6%)
30-34	1,812,589 (94.2%)	1,770,610 (92.0%)
25-29	1,741,481 (91.3%)	1,694,051 (88.9%)
20-24	1,532,822 (89.5%)	1,493,511 (87.2%)
16-19	1,111,807 (93.0%)	1,087,526 (90.9%)
12-15	1,055,706 (84.9%)	999,061 (80.3%)

	16+	50+	12-15	5-11
Dose 1	96.98% (19,998,230 doses / 20,619,959 people)	>99% (8,847,038 doses / 8,749,703 people)	84.86% (1,055,706 doses / 1,243,990 people)	52.70% (1,199,879 doses / 2,276,638 people)
Dose 2	95.35% (19,661,716 doses / 20,619,959 people)	>99% (8,739,562 doses / 8,749,703 people)	80.31% (999,061 doses / 1,243,990 people)	34.28% (780,360 doses / 2,276,638 people)

Dose 1 Dose 2 Population

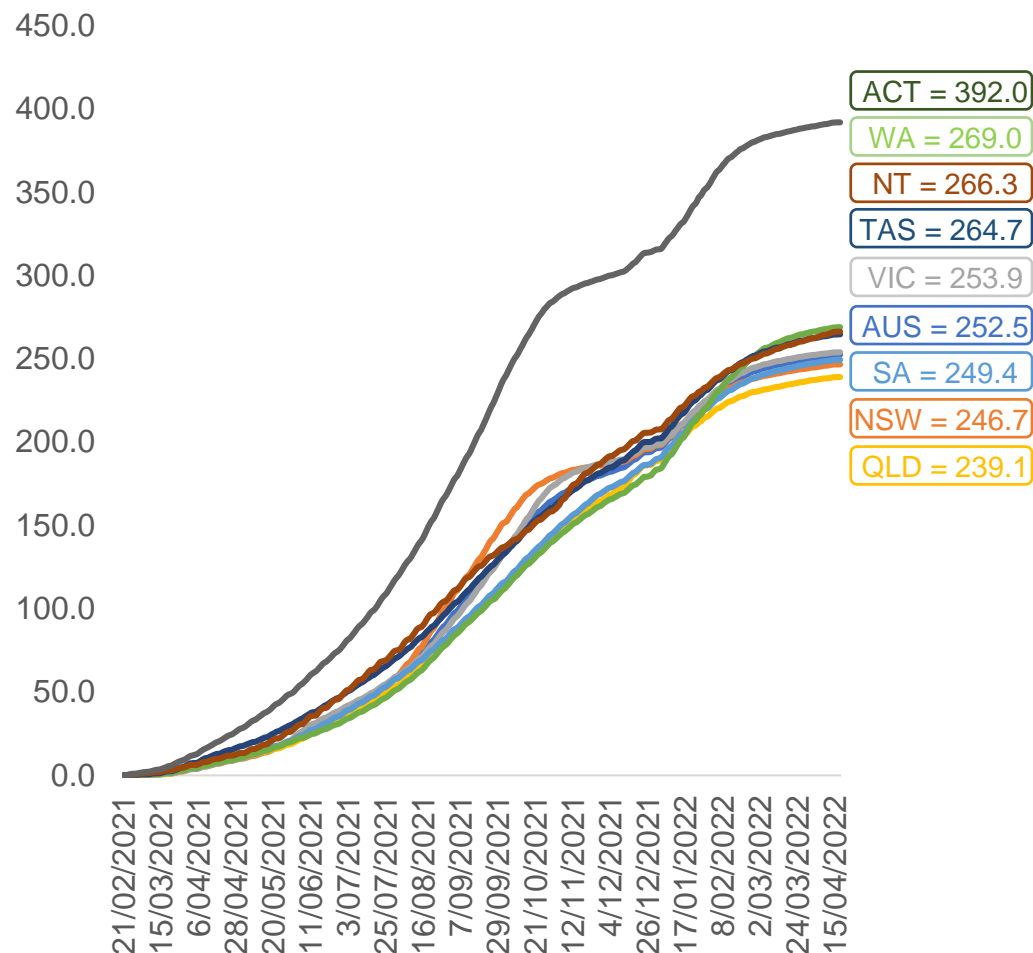


	AUS	ACT	NSW	NT	QLD	SA	TAS	VIC	WA
16 and over - dose 1	19,998,230	351,768	6,311,115	173,705	3,847,563	1,370,995	443,765	5,146,253	2,087,762
16 and over - dose 2	19,661,716	346,276	6,215,831	168,944	3,781,872	1,340,855	434,466	5,070,057	2,054,652
16 and over - population	20,619,959*	344,037	6,565,651	190,571	4,112,707	1,440,400	440,172	5,407,574	2,114,978
16 and over % with dose 1	96.98%	>99%	96.12%	91.15%	93.55%	95.18%	>99%	95.17%	98.71%
16 and over % with dose 2	95.35%	>99%	94.67%	88.65%	91.96%	93.09%	98.70%	93.76%	97.15%
5 to 11 - dose 1	1,199,879	31,902	357,197	13,213	209,520	84,207	28,781	326,283	140,908
5 to 11 - dose 2	780,360	24,780	234,368	7,458	136,124	55,604	21,784	212,890	83,433
5 to 11 - population	2,276,638	39,789	716,460	24,750	478,731	148,816	45,033	578,499	244,154
5 to 11 % with dose 1	52.70%	80.18%	49.86%	53.39%	43.77%	56.58%	63.91%	56.40%	57.71%
5 to 11 % with dose 2	34.28%	62.28%	32.71%	30.13%	28.43%	37.36%	48.37%	36.80%	34.17%
12 to 15 - dose 1	1,055,706	20,128	325,019	10,862	207,151	68,447	22,931	275,693	115,805
12 to 15 - dose 2	999,061	19,557	310,311	9,779	194,039	64,719	21,806	263,657	106,743
12 to 15 - population	1,243,990	19,693	390,330	13,060	270,146	82,747	26,308	308,611	132,869
12 to 15 % with dose 1	84.86%	>99%	83.27%	83.17%	76.68%	82.72%	87.16%	89.33%	87.16%
12 to 15 % with dose 2	80.31%	>99%	79.50%	74.88%	71.83%	78.21%	82.89%	85.43%	80.34%

*National population will not equal sum of listed jurisdictions due to a small number of people counted in national population residing in some 'other' territories. Sum of state doses will not add to national total as some records are unable to be geocoded to a State or Territory.
Doses sourced from Australian Immunisation Register, population from ABS ERP June 2020

Vaccinations by location

Cumulative total doses administered vs eligible state populations*

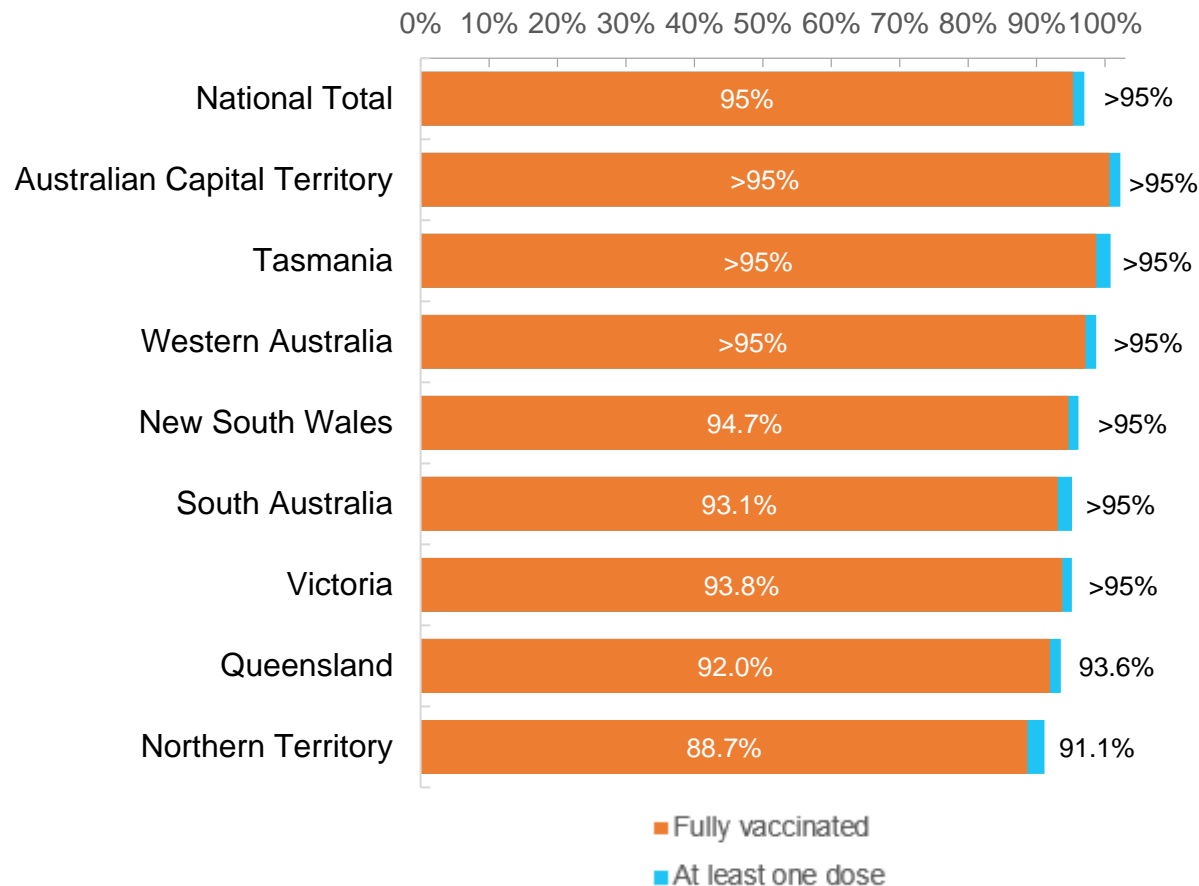


*Not an indication of percentage vaccinated, numbers will exceed 100 due to multiple doses required per person of the population. All doses are included for those aged 12 and above, and are based on vaccination provider location.

Data as at:
18 Apr 2022

Australia's COVID-19
Vaccine Roadmap

First and Second Doses by residential location



Aboriginal and Torres Strait Islander peoples

Number of people vaccinated

Data as at:
12 Apr 2022
Updated weekly

Australia's COVID-19
Vaccine Roadmap



437,196

people over the age of 16
have had at least one dose

84.3%

of people over the age of 16
have had at least one dose



416,954

people over the age of 16
are fully vaccinated

80.4%

of people over the age of 16 are
fully vaccinated



People aged 12 – 15 years

48,616

42,655

68.5%

At least one dose

60.1%

Fully vaccinated

178 Aboriginal community controlled health services (ACCHS)

0#

50

27

44

12

3

21

21

ACT

NSW

NT

QLD

SA

TAS

VIC

WA

Medicare Address State ^{##}	Individuals Dose 1	Individuals Dose 1 %	Individuals Dose 2	Individuals Dose 2 %
Australian Capital Territory	4,796	91.0%	4,675	88.7%
New South Wales	134,158	86.7%	130,995	84.6%
Northern Territory	41,651	89.4%	39,382	84.6%
Queensland	114,966	81.3%	109,250	77.2%
South Australia	19,740	79.8%	18,260	73.8%
Tasmania	13,816	88.4%	13,400	85.8%
Victoria	35,221	89.7%	34,411	87.6%
Western Australia	53,334	85.9%	48,841	78.7%
Unknown/Other Territories	19,514	68.2%	17,740	62.0%
Totals	437,196	84.3%	416,954	80.4%

Source: Australian Immunisation Register

*Identifying as Aboriginal and Torres Strait Islander is optional and the estimated population may be under reported.

**Includes all Aboriginal and Torres Strait Islander peoples who have received a vaccination, not limited to those administered in an ACCHS setting

##ACCHS in the ACT are currently operating as a Commonwealth Vaccine Clinics so not included to avoid double counting

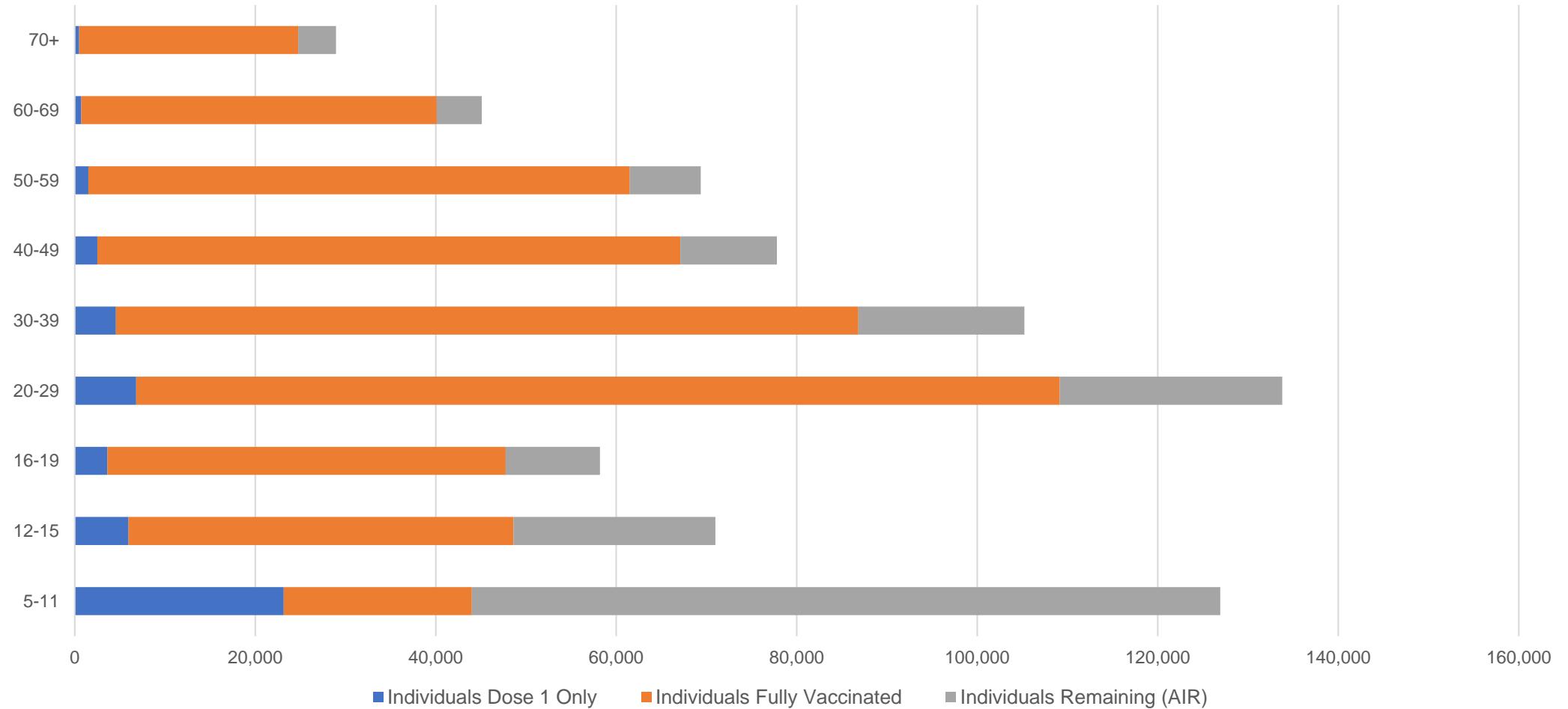
##The above table includes all identified Aboriginal and Torres Strait Islander people who are aged 16 and above by their state of residence.

Aboriginal and Torres Strait Islander peoples

Number of people vaccinated by age

Data as at:
12 Apr 2022
Updated weekly

Australia's COVID-19
Vaccine Roadmap



Source: Australian Immunisation Register

Commonwealth primary care

Data as at:
18 Apr 2022

Australia's COVID-19
Vaccine Roadmap



Primary care vaccine administration sites

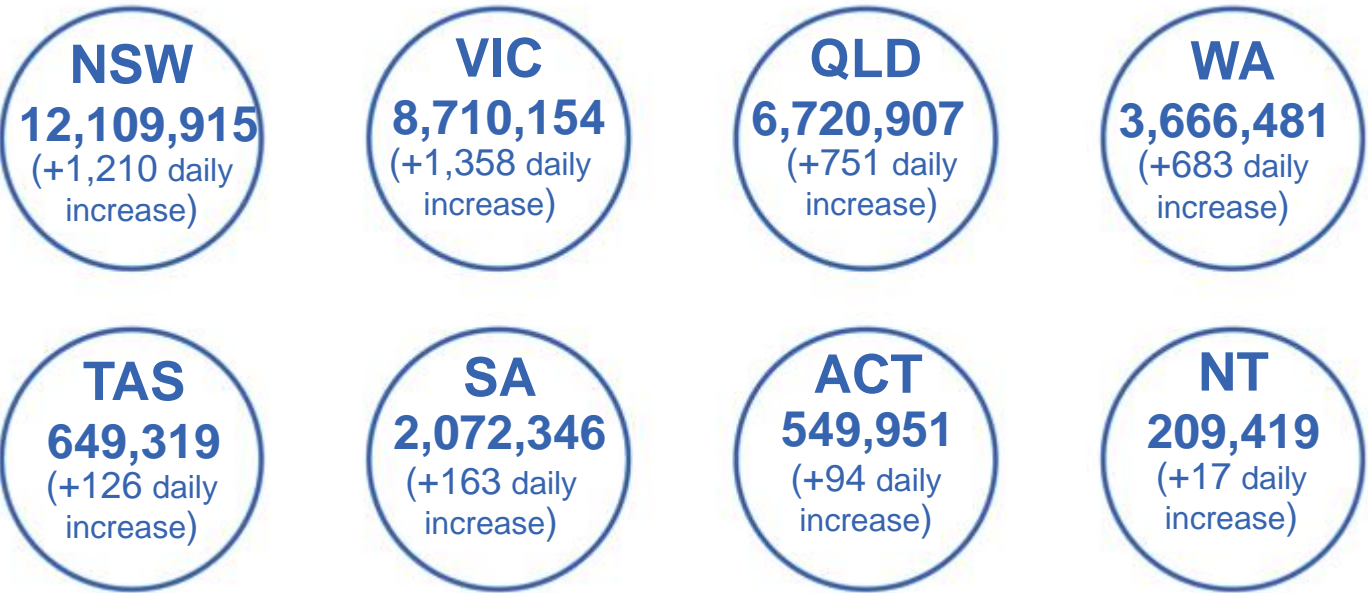
5,793	128	178	3,596
GPs	CVCs	ACCHS	Pharmacies



34,992,806 total vaccine doses administered
primary care settings as at 18 April
+ 4,298 recorded in the last 24 hours

Primary care vaccinations by provider type

	Doses administered	Daily increase	7 day increase
General Practice* includes other Commonwealth	28,211,412	2,265	93,339
Pharmacy	6,781,394	2,033	51,283



304,314

doses administered to persons
residing in other territories or with
missing residential information

*General practice includes Commonwealth Vaccination Clinics, Aboriginal Community Health Centres, Royal Flying Doctor Service and other Commonwealth vaccination facilities

Source: Australian Immunisation Register

Data as at:
18 Apr 2022

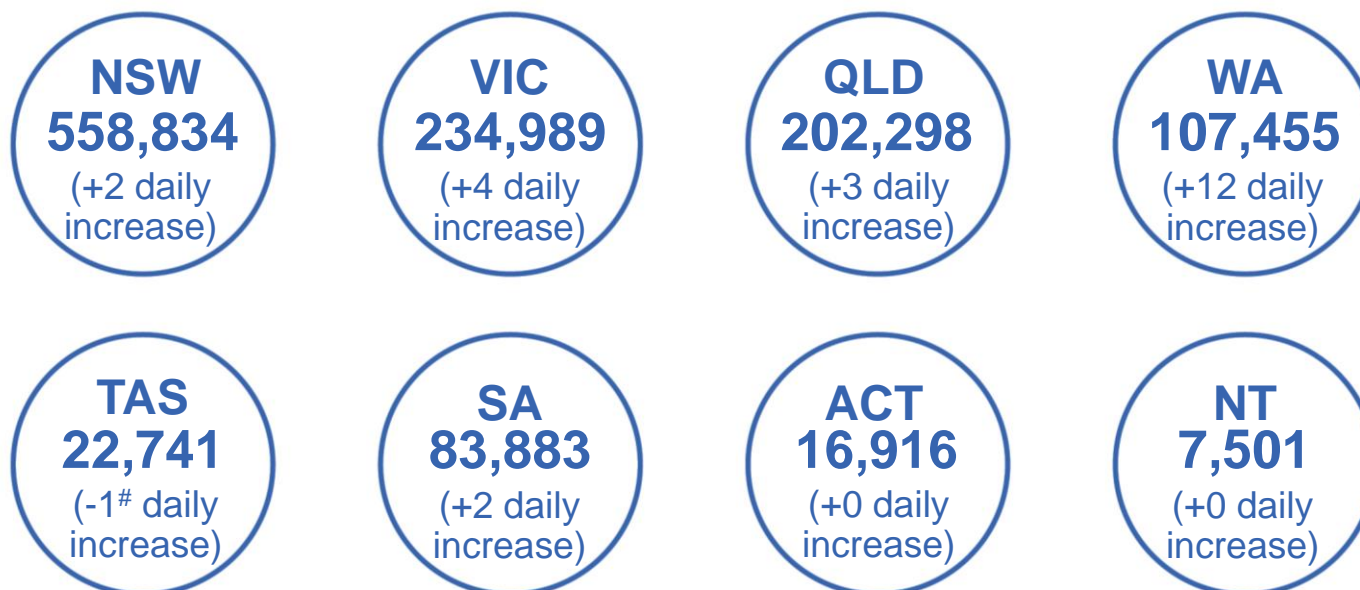
Commonwealth aged care and disability doses administered



1,270,819 (+ 15 last 24 hours)

Total vaccine doses administered in aged care and disability facilities as at 18 April

Number of doses administered as part of the Commonwealth aged and disability care rollout



36,202

doses administered to persons
residing in other territories or with
missing residential information

*Sourced from the Australian Immunisation Register. Includes all persons vaccinated at participating residential aged care, disability and related industry settings.

**State level breakdown indicates the residential location and may not align to the state in which the vaccination occurred.

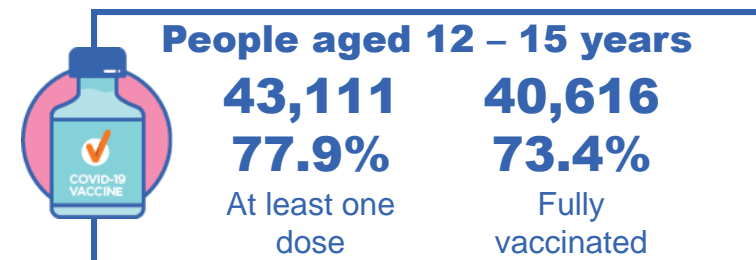
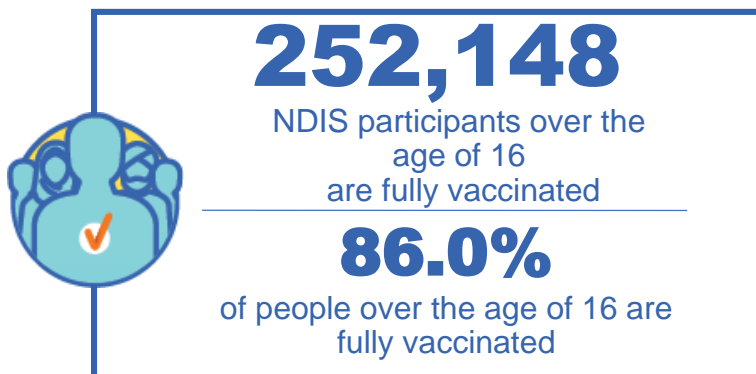
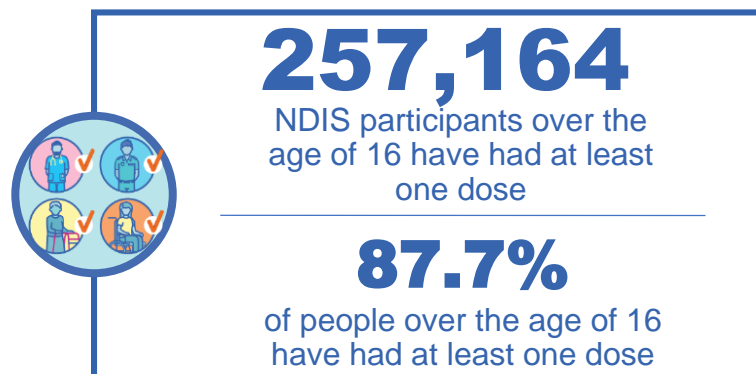
#Numbers are calculated as difference in daily cumulative reported numbers to allow for historical corrections in all data sources. This can occasionally result in negative numbers, such as for TAS, where historical details about doses have been updated.

Source: Australian Immunisation Register

National Disability Insurance Scheme (NDIS) reported vaccinations

Data as at:
14 April 2022
Updated weekly

Australia's COVID-19
Vaccine Roadmap



NDIS participant vaccinations

	People aged 16+ with at least one dose	People aged 16+ fully vaccinated	% People aged 16+ with at least one dose	% People aged 16+ fully vaccinated
ACT	4,860	4,794	89.6%	88.4%
NSW	79,019	77,712	88.1%	86.6%
NT	2,225	2,153	78.0%	75.5%
QLD	50,677	49,650	86.1%	84.4%
SA	20,982	20,441	85.5%	83.3%
TAS	6,443	6,282	87.6%	85.5%
VIC	68,437	67,206	88.9%	87.3%
WA	24,521	23,910	89.1%	86.9%
National	257,164	252,148	87.7%	86.0%

Source: Linkage between National Disability Insurance Agency data and the Australian Immunisation Register. Total NDIS participant numbers as at 28 February. Australian Immunisation Register data as at 13 April. Includes all participants regardless of residence type.

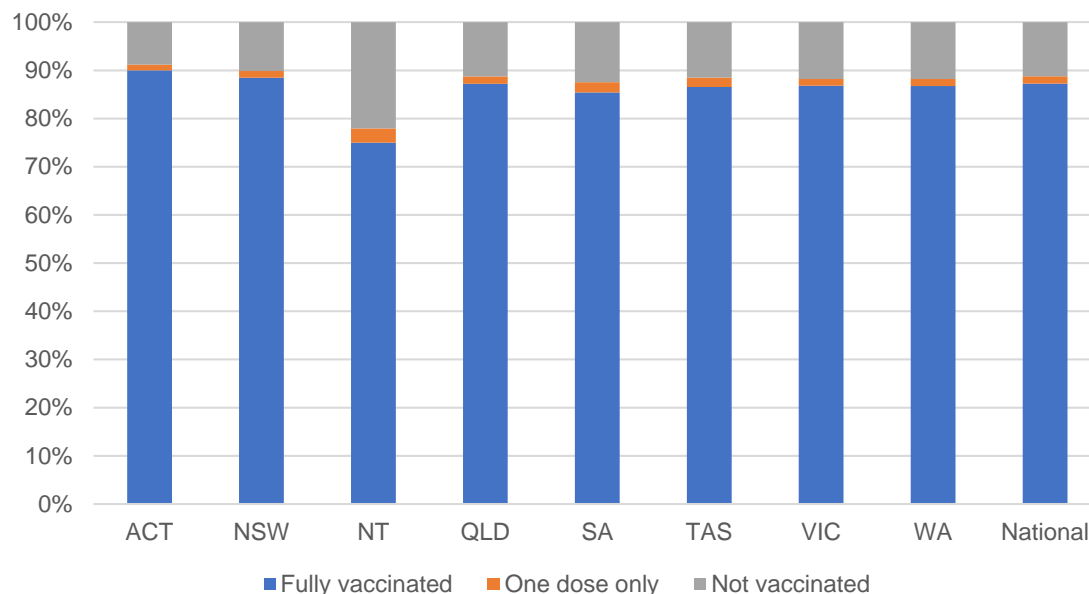
National Disability Insurance Scheme (NDIS) reported vaccinations

Data as at:
14 April 2022
Updated Weekly

Australia's COVID-19
Vaccine Roadmap

NATIONAL	Total people with at least one dose	People fully vaccinated	Total number of individuals in cohort	% People with at least one dose	% People fully vaccinated
NDIS participants living in disability accommodation	20,775	20,427	23,352	89.0%	87.5%

NDIS participants in disability and aged care accommodation



Source: Linkage between National Disability Insurance Agency data and the Australian Immunisation Register. Includes participants residing in disability accommodation only.
Source: Total NDIS participant numbers as at 28 February. Participant data as at 13 April. Australian Immunisation Register data as at 13 April. Worker data as at 12 April.

NDIS workforce vaccinations

	NDIS workers with at least one dose	NDIS workers fully vaccinated	% NDIS workers with at least one dose	% NDIS workers fully vaccinated
NSW	121,655	117,549	98.2%	94.9%
VIC	116,430	112,564	98.3%	95.1%
QLD	69,510	68,675	97.5%	96.3%
WA	32,953	31,252	98.5%	93.5%
SA	35,614	32,531	98.3%	89.8%
TAS	10,709	10,402	99.7%	96.8%
ACT	3,527	3,484	99.0%	97.8%
NT	3,430	3,270	99.4%	94.8%
TOTAL	393,828	379,727	98.2%	94.7%

Source: the NDIS Commission has established a requirement for registered NDIS providers who provide intensive disability support services to report on the vaccination status of workers they employ, or otherwise engage, to deliver NDIS-funded supports and services, and who are required to be vaccinated in accordance with in-force state and territory public health orders. The statistics reflect data reported to the NDIS Commission by registered NDIS providers and should be considered indicative and subject to change

Note: Some registered NDIS providers are yet to report on the vaccination status of their workforce. The NDIS Commission is working with those providers around reporting requirements.

Remaining workers not included include those exempt from vaccination requirements, workers whose vaccination status is not yet verified by the provider (such as workers on leave) and provider reporting anomalies.

Residential aged care vaccination rollout

Residential aged care facilities status

172,894

People fully vaccinated

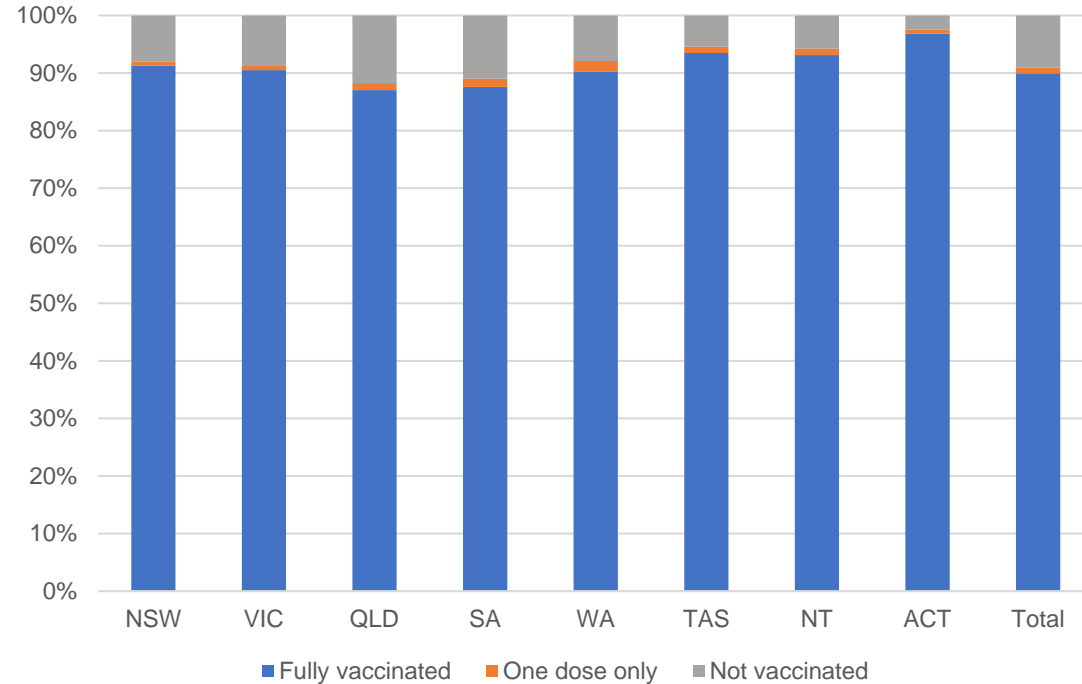
174,763

People with at least one dose

Australia's COVID-19 Vaccine Roadmap

Data as at:
14 Apr 2022
Updated weekly

Aged care resident vaccinations



Aged care worker vaccinations

Jurisdictions	Total workers with at least one dose	Workers fully vaccinated	% Workers with at least one dose	% Workers fully vaccinated
NSW	75,246	75,242	96.7%	96.7%
VIC	65,109	65,105	94.7%	94.7%
QLD	45,804	45,798	95.0%	95.0%
SA	26,133	26,116	96.1%	96.0%
WA	24,116	24,115	99.6%	99.6%
TAS	7,566	7,564	100.0%	100.0%
NT	884	884	100.0%	100.0%
ACT	2,969	2,969	100.0%	100.0%
Total	247,827	247,793	96.2%	96.2%

Source: My Aged Care Portal vaccination progress

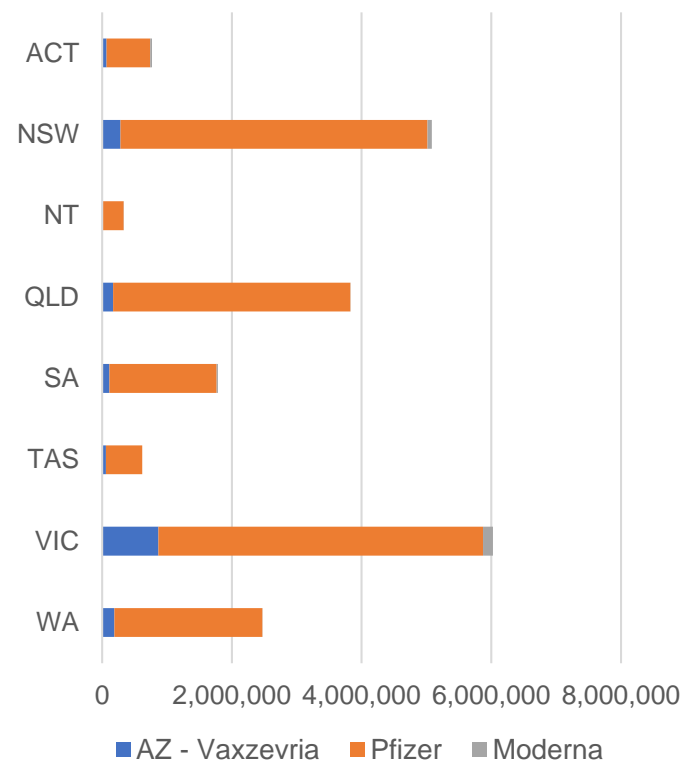
*Status updates are provided by facilities at least once per week. Reporting is updated Monday to Friday to encompass different facility updates being made on different days.

Data is sourced directly from Aged Care Service Providers and is not drawn or closely aligned with data from AIR due to inconsistencies and potential lags in uploading of records.

Data as at:
18 Apr 2022

Jurisdiction administered

Total vaccine doses administered in State and Territory clinics as at 18 April



20,920,116 total vaccine doses administered
in State and Territory clinics as at 18 April
+ **2,190** recorded in the last 24 hours
+ **49,158** recorded in the last 7 days

NSW
5,083,706
(+387 daily
increase)

VIC
6,029,336
(+455 daily
increase)

QLD
3,828,864
(+107 daily
increase)

WA
2,473,273
(+529 daily
increase)

TAS
616,872
(+467 daily
increase)

SA
1,787,926
(+168 daily
increase)

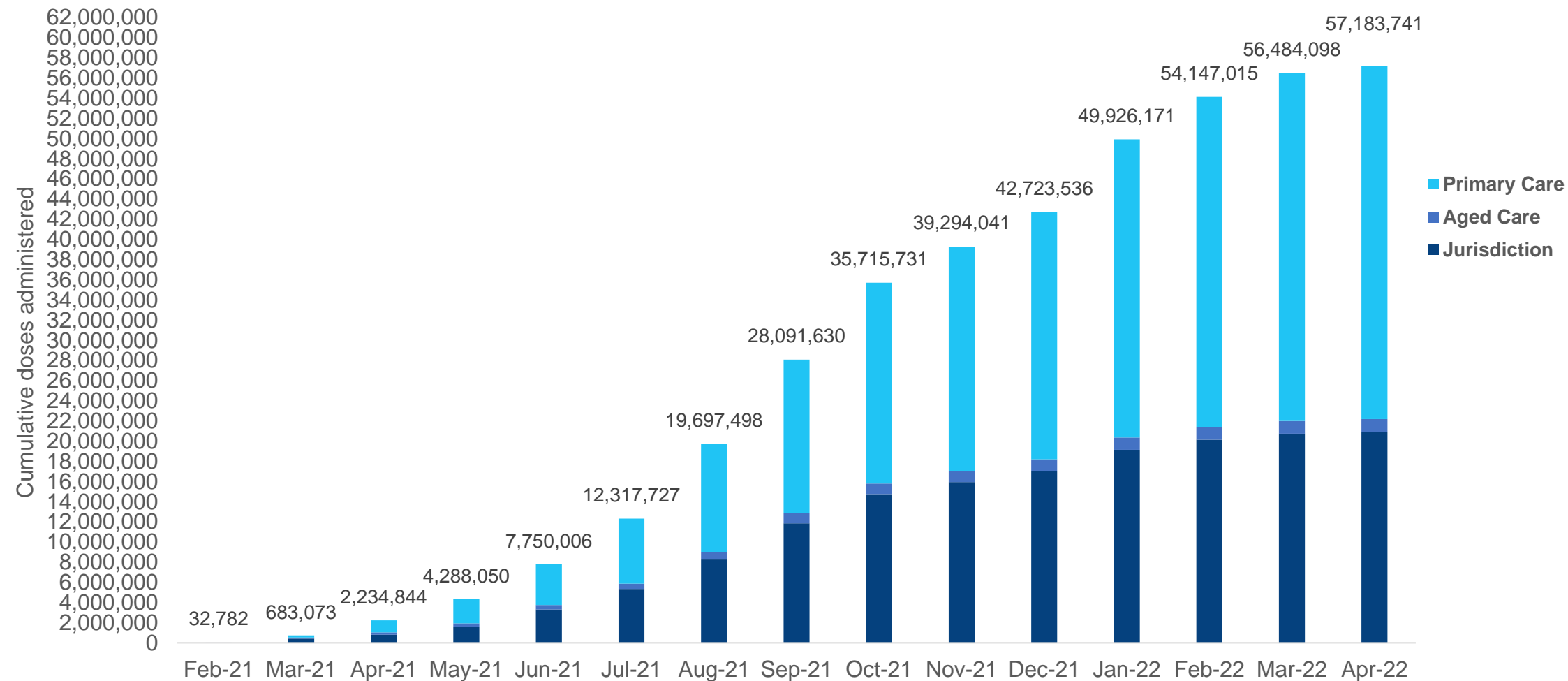
ACT
768,075
(+75 daily
increase)

NT
332,064
(+2 daily
increase)

*Sourced from the Australian Immunisation Register. Numbers are calculated as difference in daily cumulative reported numbers to allow for historical corrections.

Cumulative doses administered by channel

Data as at:
18 Apr 2022



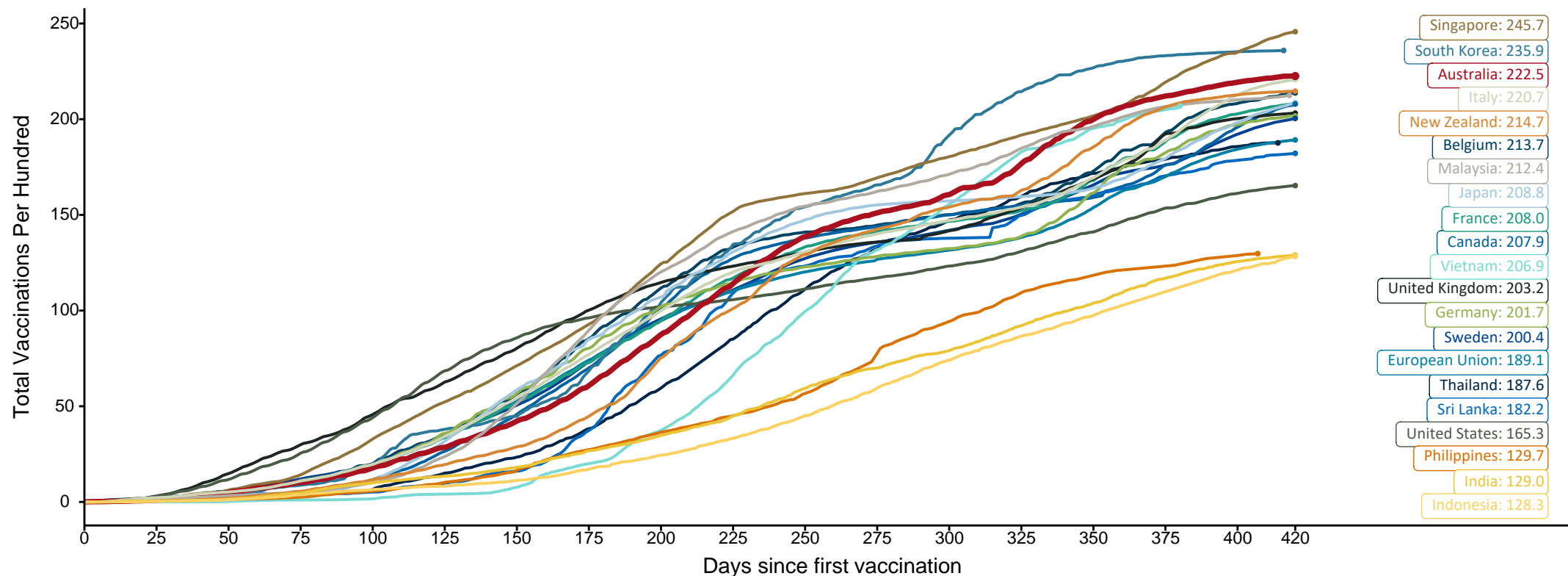
Source: Australian Immunisation Register

Doses at equivalent stages of rollout (Day 420)

Data as at:
18 Apr 2022

The x-axis is truncated at the length of Australia's vaccination program. Countries with intermittent reporting have had their doses per 100 imputed to Australia's current stage of rollout. Israel excluded as it is beyond scale of the graph

Cumulative doses administered (18 Apr): **57,183,741**



Note: From 11 January 2022, data for Australia includes all doses administered to people 5 and over. Prior to 11 January, data was for 12 and over.

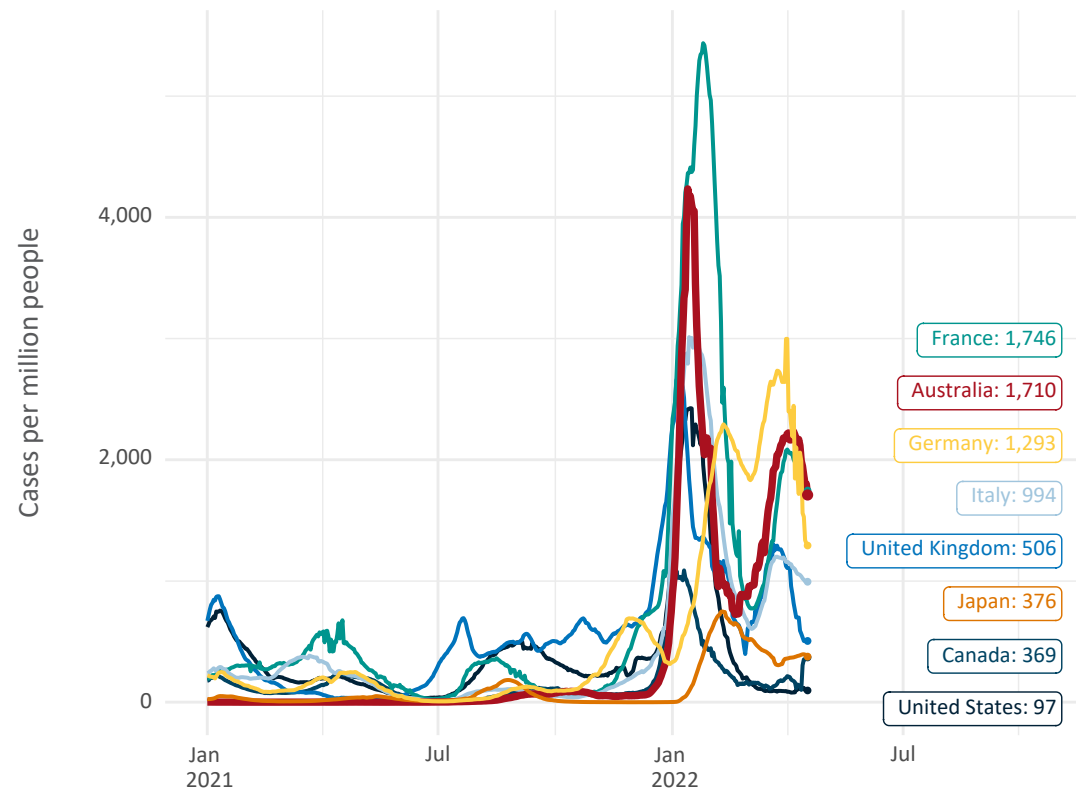
Source: Department of Health (Australia), Our World in Data (international)

Latest data: 18 April

Data as at:
18 Apr 2022

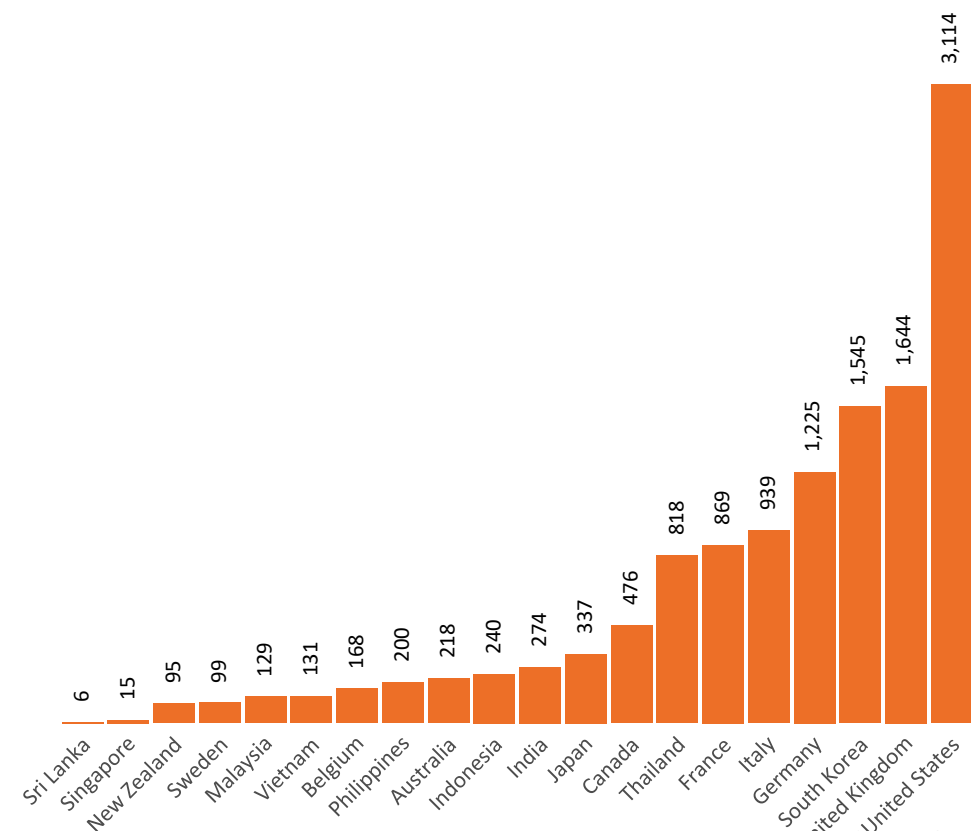
International data – COVID-19

New daily cases per million in 2021, Australia and G7 countries
Smoothed - 7 day average



Source: OWID
Data downloaded: 19 Apr 2022 09:01
Latest data: 17 Apr 2022

COVID-19 deaths in past 7 days - Australia and select countries



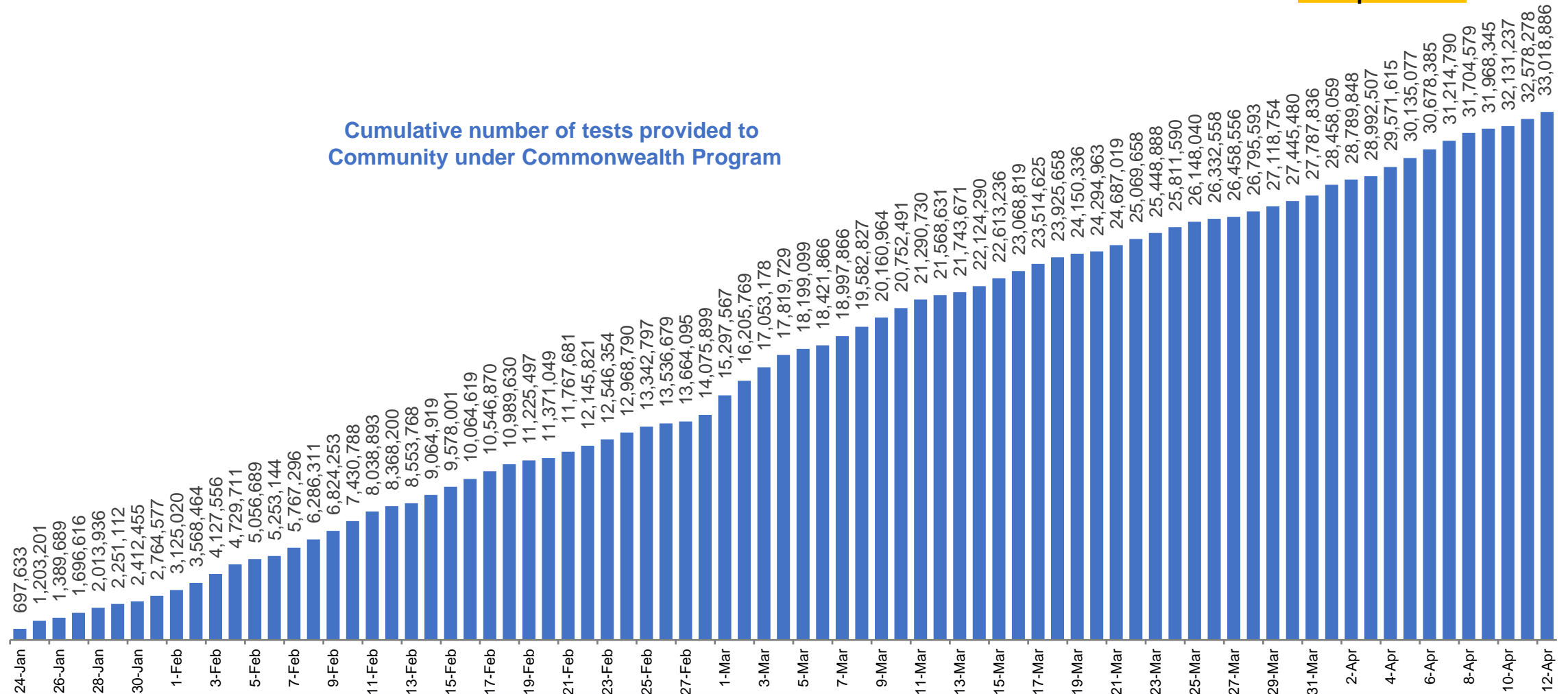
Source: OWID
Data downloaded: 19 Apr 2022 09:01
Latest data: 17 Apr 2022

Data as at
14 April 2022

Concessional rapid antigen test program

5,637 pharmacies have delivered over **33.0 million rapid antigen tests** to more than **4.6m eligible concession card holders** under the Government's concessional rapid antigen test program.

Cumulative number of tests provided to
Community under Commonwealth Program



Pandemic Response Payments

Australia's COVID-19
Vaccine Roadmap

Data as at midnight: 17 Apr 2022
Updated weekly



2.38 million

People have received at least one COVID
Disaster Payment (including ISP200)

\$14.22 billion

Paid Out as at 17 Apr 2022

7.67 million

Claims granted across
three different payments



93%

of Claims
Received Digitally



COVID Disaster Payment:

5.89 million claims received - 2.19 million individuals paid a total of \$12.59 billion.

\$200 Income Support Payment:

353,000 claims received - 183,000 individuals paid a total of \$268.9 million.

Pandemic Leave Disaster Payment:

1.92 million claims received - 1.18 million individuals paid a total of \$1.35 billion.



**THREE
PAYMENTS
AVAILABLE**

COVID Disaster Payment

assisting during a
lockdown event in a
Commonwealth hotspot.

Income Support Payment \$200

for income support
recipients who lost at
least 8 hours of work.

Pandemic Leave Disaster Payment

for those who have to
self-isolate, quarantine
or care.

For more information visit:
servicesaustralia.gov.au

COVID-19 DISASTER PAYMENTS

Northern Territory

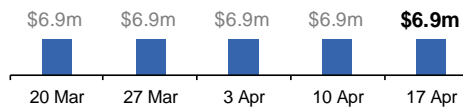
Lockdown (#3) from 16 Nov to 22 Nov
Claiming period ended 27 Dec

**7,500 people have received at least
one COVID Disaster Payment.**

\$6.9m paid out as at 17 Apr 2022.

**Nil paid in initial payments in the week
ending 17 Apr 2022.**

Cumulative payments made by Territory since
activation on 25 Aug 2021.



Victoria

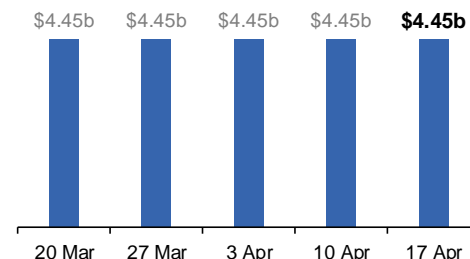
Lockdown (#6) from 6 Aug to 28 Oct
Claiming period ended 9 Dec

**745,000 people have received at least
one COVID Disaster Payment.**

\$4.45b paid out as at 17 Apr 2022.

**Nil paid in initial and reoccurring
payments in the week ending
17 Apr 2022.**

Cumulative payments made by State since
activation on 8 Jun 2021.



New South Wales

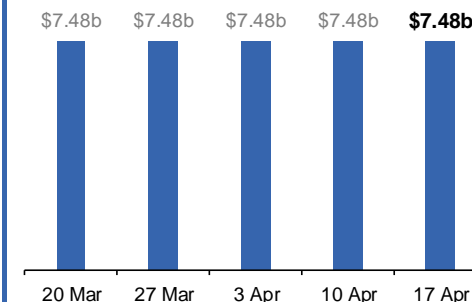
Lockdown from 24 Jun to 10 Oct
Claiming period ended 27 Nov

**1.08m people have received at least
one COVID Disaster Payment.**

\$7.48b paid out as at 17 Apr 2022.

**Nil paid in initial and reoccurring
payments in the week ending
17 Apr 2022.**

Cumulative payments made by State since
activation on 1 Jul 2021.



Australian Capital Territory

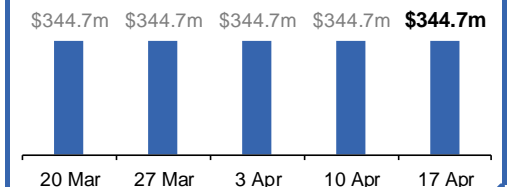
Lockdown from 12 Aug to 14 Oct
Claiming period ended 25 Nov

**65,000 people have received at least
one COVID Disaster Payment.**

\$344.7m paid out as at 17 Apr 2022.

**Nil paid in initial and reoccurring
payments in the week ending
17 Apr 2022.**

Cumulative payments made by Territory since
activation on 20 Aug 2021.



Pandemic Response Payments (continued)

Data as at midnight: 17 Apr 2022
Updated weekly

COVID-19 DISASTER PAYMENTS

Tasmania

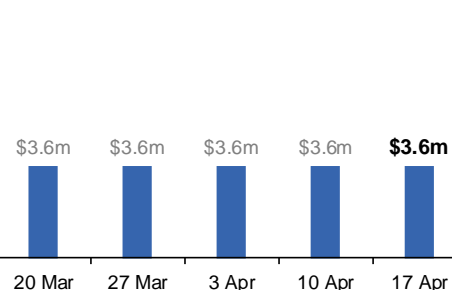
Lockdown from 15 Oct to 18 Oct
Claiming period ended 12 Nov

6,900 people have received at least one COVID Disaster Payment.

\$3.6m paid out as at 17 Apr 2022.

Nil paid in initial and reoccurring payments in the week ending 17 Apr 2022.

Cumulative payments made by State since activation on 22 Oct 2021.



Queensland

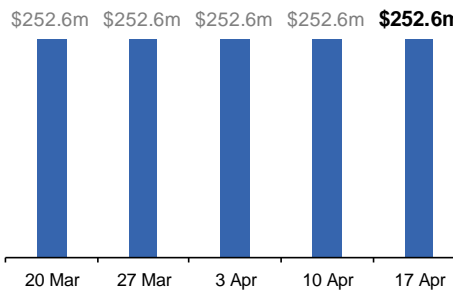
Lockdown from 31 Jul to 11 Aug
Claiming period ended 28 Aug

196,000 people have received at least one COVID Disaster Payment.

\$252.6m paid out as at 17 Apr 2022.

Nil paid in initial and reoccurring payments in the week ending 17 Apr 2022.

Cumulative payments made by State since activation on 7 Aug 2021.



South Australia

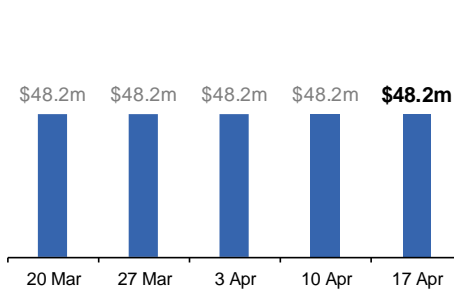
Lockdown from 21 to 27 Jul
Claiming period ended 17 Aug

86,000 people have received at least one COVID Disaster Payment.

\$48.2m paid out as at 17 Apr 2022.

Nil paid in initial and reoccurring payments in the week ending 17 Apr 2022.

Cumulative payments made by State since activation on 28 Jul 2021.



Administration and Utilisation

Doses as at 17 April 2022

	Ordered	Available	Administered	Stock on Hand at Sites	Estimated Dose Utilisation %
	Up to 17/04/22	Delivered up to 10/04/22 including redistributions	Up to 17/04/22		(see note)
NSW	6,111,372	6,111,372	5,083,319	416,916	93%
VIC	6,992,954	6,992,354	6,028,881	328,052	96%
QLD	4,846,902	4,805,242	3,828,757	496,081	90%
WA	2,656,338	2,652,038	2,472,744	85,512	Fully utilised
SA	2,151,120	2,122,120	1,787,758	122,150	94%
TAS	654,290	654,290	616,405	455	Fully utilised
NT	409,544	398,386	332,062	31,158	93%
ACT	651,286	651,286	768,000	9,697	Fully utilised
Jurisdiction delivered total	24,473,806	24,387,088	20,917,926	1,490,020	96%
Commonwealth Vaccination Providers	1,376,736	1,374,354	1,270,804	5,947	Fully utilised
Commonwealth Primary Care & Other	52,959,046	52,244,964	34,988,508	12,039,190	77%
Total	78,809,588	78,006,406	57,177,238	13,535,157	83%

About this data

- Ordered – Total doses delivered to sites. Based on logistics provider data. This figure includes doses allocated for administration in the coming week.
- Available – total doses that could have been administered to date, less doses re-distributed from States & Territories to Primary Care or Commonwealth Vaccination Providers (i.e., does not include those deliveries recently received, and intended for use in the coming week).
- Administered – Doses administered as at 17 April 2022.
- Stock on Hand at Sites – Available doses minus Administered doses and a small % wastage.
- The dose utilisation is calculated based on the total doses administered and a small % wastage in line with international standards in relation to total available doses.
- For Commonwealth Vaccination Providers, the doses available for administration is for the full period (up to 17 April 2022).
- Commonwealth Vaccination Providers utilisation is not provided as the in-reach rollout is demand-based.