



Australian Government
Operation COVID Shield

COVID-19 Vaccine Roll-out

17 April 2022

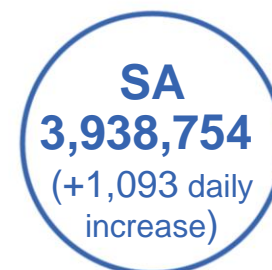
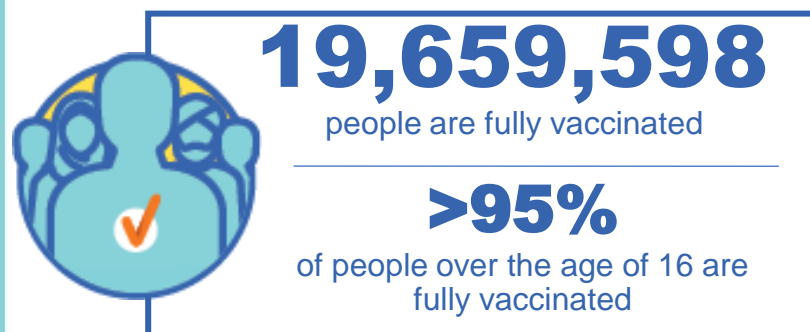
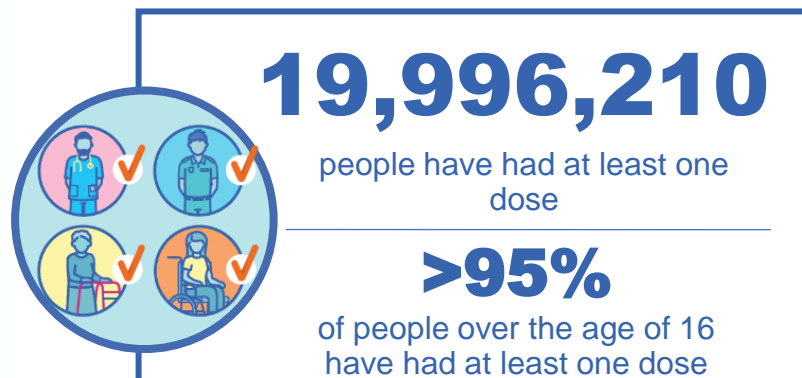
Data as at:
16 Apr 2022

Total vaccine doses



57,174,146 total vaccine
doses administered nationally as at 16 April

+11,547 recorded in the last 24 hours

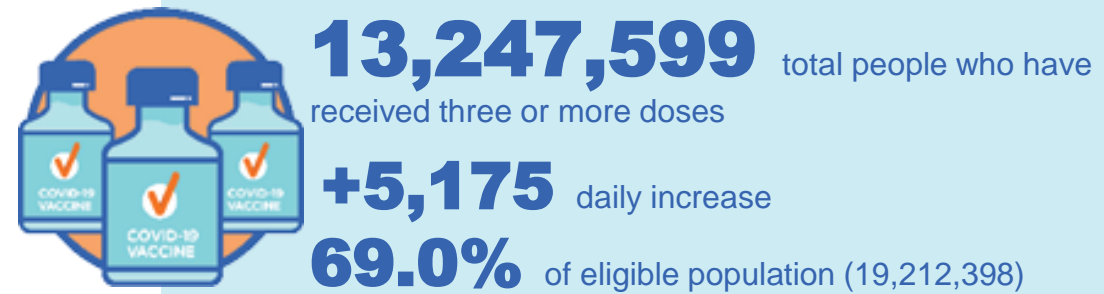
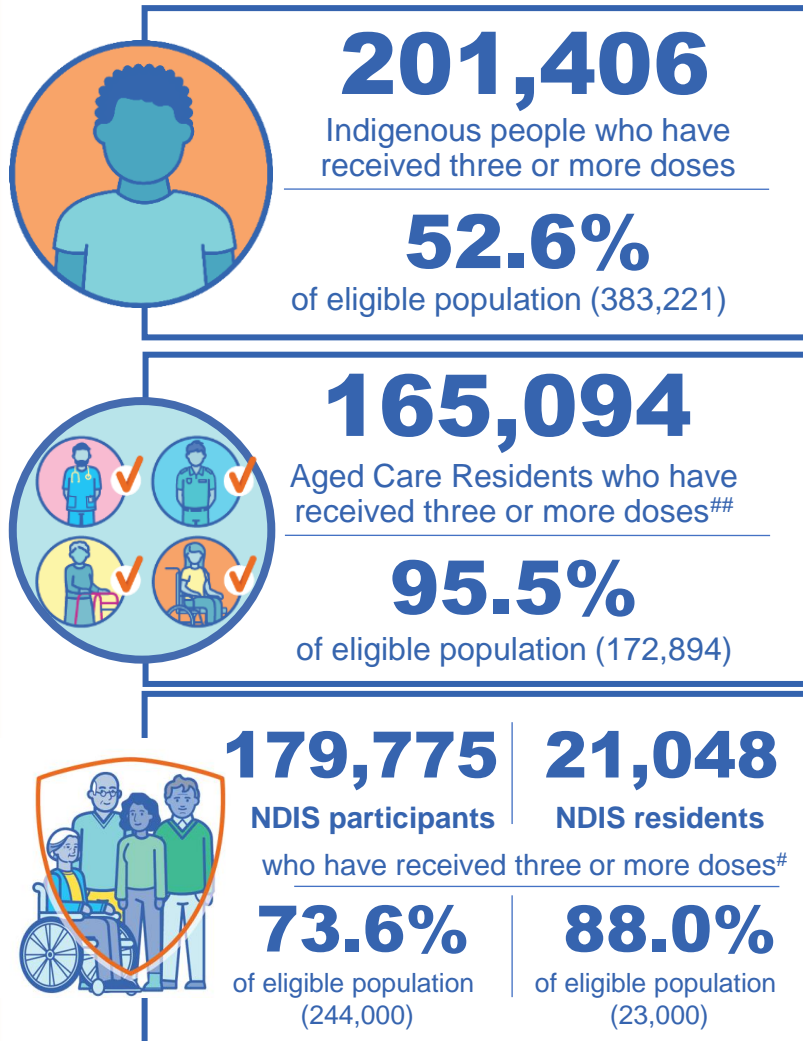


*Administration state breakdown indicates state in which a vaccine was administered

**Overall dose count includes instances of more than three doses per person in a small number of cases.

Source: Australian Immunisation Register

Booster Vaccinations



Data as at:
16 Apr 2022

	Number of People	Daily Increase	% of Eligible
NSW	4,055,489	954	65.7%
VIC	3,558,372	986	70.7%
QLD	2,294,613	787	62.5%
WA	1,607,733	1,529	85.9%
SA	937,884	471	72.2%
TAS	301,926	127	71.8%
ACT	263,712	61	76.6%
NT	117,083	208	71.7%

*People may belong to multiple groups and could be represented in the above breakdowns multiple times.
NDIS participants data as at 13 April 2022. ## Aged Care Residents data as at 13 April 2022.

Source: Australian Immunisation Register

110,787 doses administered to persons residing in other territories or with missing residential information

Vaccinations by residential location

Australia's COVID-19 Vaccine Roadmap

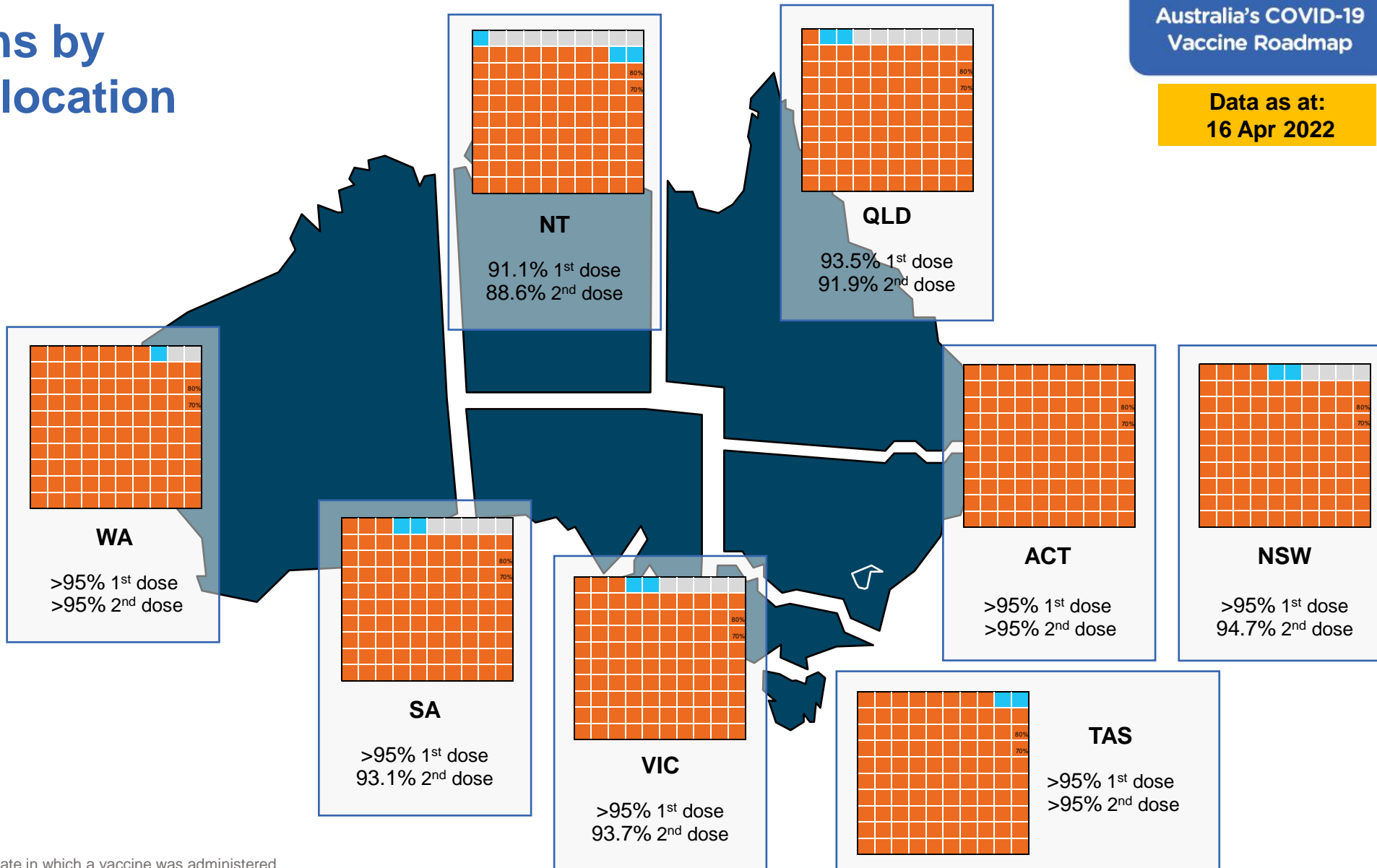
Data as at:
16 Apr 2022

First doses

Age	Today	4 weeks ago	8 weeks ago
16+	>95%	>95%	>95%
50+	>95%	>95%	>95%
70+	>95%	>95%	>95%

Fully vaccinated

Age	Today	4 weeks ago	8 weeks ago
16+	>95%	>95%	94.6%
50+	>95%	>95%	>95%
70+	>95%	>95%	>95%



*Residential state may differ from the state in which a vaccine was administered

Commonwealth and Jurisdiction vaccine doses administered

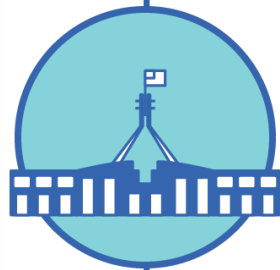
Data as at:
16 Apr 2022



57,174,146 total vaccine
doses administered nationally as at 16 April
+ 11,547 recorded in the last 24 hours



20,916,789
doses administered by state
and territory facilities
+ 4,689
recorded in the last 24 hours



36,257,357
doses administered by
commonwealth facilities
+ 6,858
recorded in the last 24 hours
34,986,574 total vaccine doses
administered in primary care settings
1,270,783 total vaccine doses
administered in aged care and disability
settings

NSW	Jurisdictions	Commonwealth
Cumulative	5,083,160	12,665,526
Daily increase	603	1,573

VIC	Jurisdictions	Commonwealth
Cumulative	6,028,791	9,023,132
Daily increase	937	1,166

QLD	Jurisdictions	Commonwealth
Cumulative	3,828,737	6,999,099
Daily increase	454	1,382

WA	Jurisdictions	Commonwealth
Cumulative	2,472,265	3,798,401
Daily increase	1,420	2,053

TAS	Jurisdictions	Commonwealth
Cumulative	616,390	669,871
Daily increase	174	97

SA	Jurisdictions	Commonwealth
Cumulative	1,787,467	2,151,287
Daily increase	705	388

ACT	Jurisdictions	Commonwealth
Cumulative	767,927	717,939
Daily increase	98	196

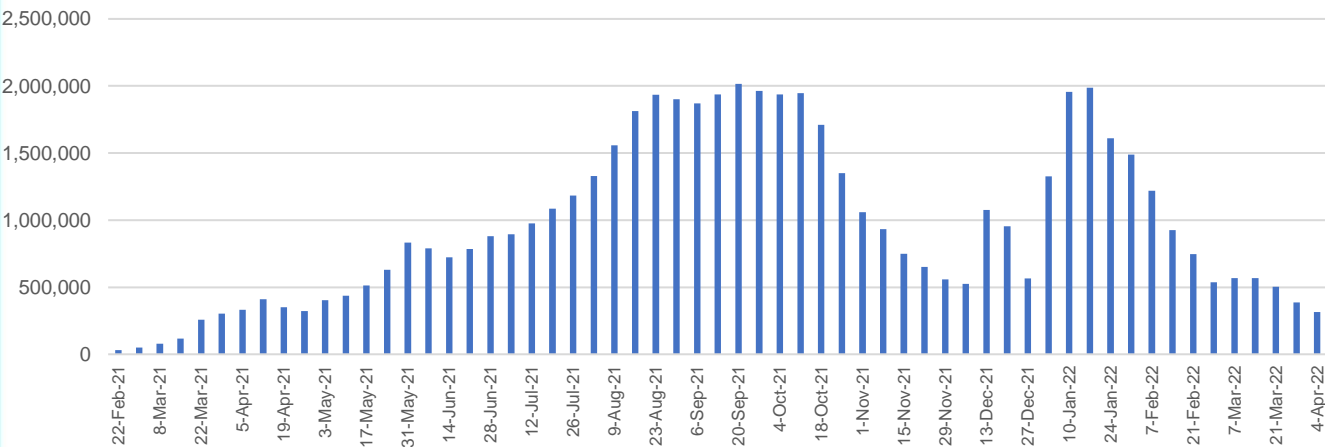
NT	Jurisdictions	Commonwealth
Cumulative	332,052	232,102
Daily increase	298	<10

Vaccine milestone charts

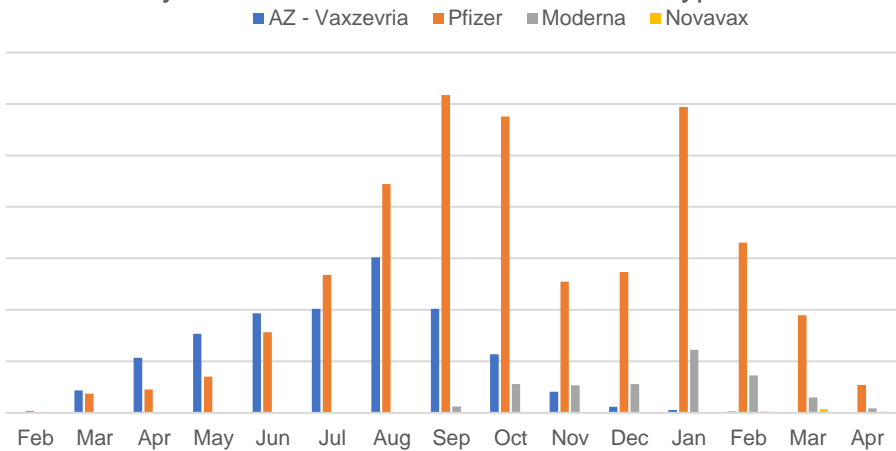
Data as at:
16 Apr 2022

Australia's COVID-19
Vaccine Roadmap

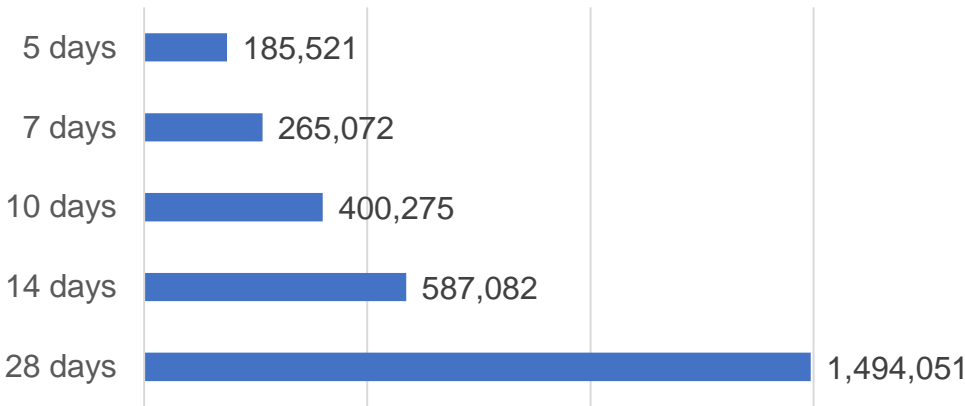
Doses Administered by Week



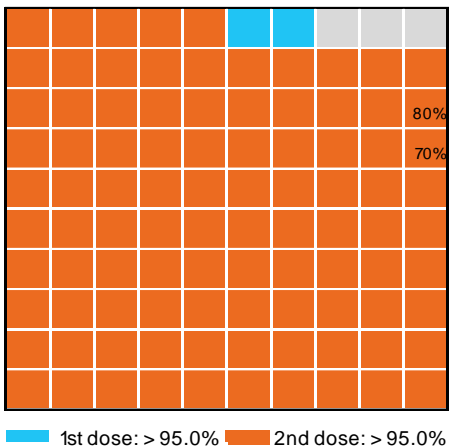
Doses by administration month and vaccine type



Doses Reported



Eligible population percentage coverage



*Each square represents 1% of the national population.
Squares are filled as milestones are achieved.

*Sourced from the Australian Immunisation Register.

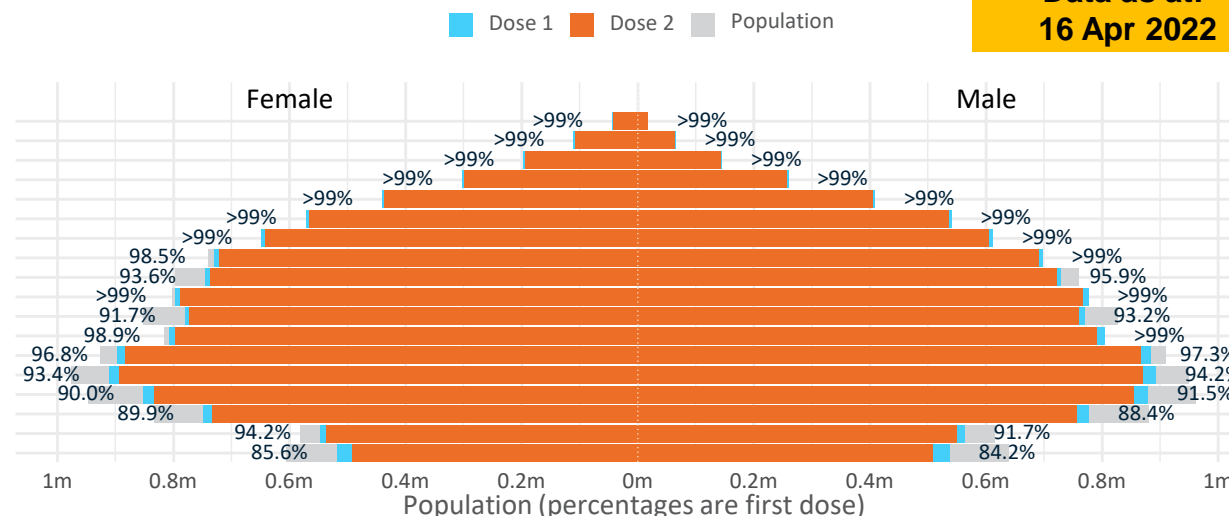
Doses by age and sex

First and second doses by age and sex

Australia's COVID-19
Vaccine Roadmap

Data as at:
16 Apr 2022

Age	Dose 1	Dose 2
95+	61,336 (>99%)	57,937 (>99%)
90-94	176,319 (>99%)	170,641 (>99%)
85-89	342,539 (>99%)	335,472 (>99%)
80-84	562,223 (>99%)	554,833 (>99%)
75-79	849,494 (>99%)	840,999 (>99%)
70-74	1,113,432 (>99%)	1,102,437 (>99%)
65-69	1,261,877 (>99%)	1,247,571 (>99%)
60-64	1,428,365 (>99%)	1,412,075 (98.3%)
55-59	1,475,400 (94.8%)	1,458,777 (93.8%)
50-54	1,574,128 (>99%)	1,556,885 (>99%)
45-49	1,551,993 (92.6%)	1,533,002 (91.4%)
40-44	1,614,628 (>99%)	1,590,034 (98.1%)
35-39	1,786,051 (97.3%)	1,753,568 (95.6%)
30-34	1,812,591 (94.2%)	1,770,581 (92.0%)
25-29	1,741,325 (91.3%)	1,693,898 (88.8%)
20-24	1,532,785 (89.5%)	1,493,437 (87.2%)
16-19	1,111,724 (93.0%)	1,087,451 (90.9%)
12-15	1,056,391 (84.9%)	999,929 (80.4%)

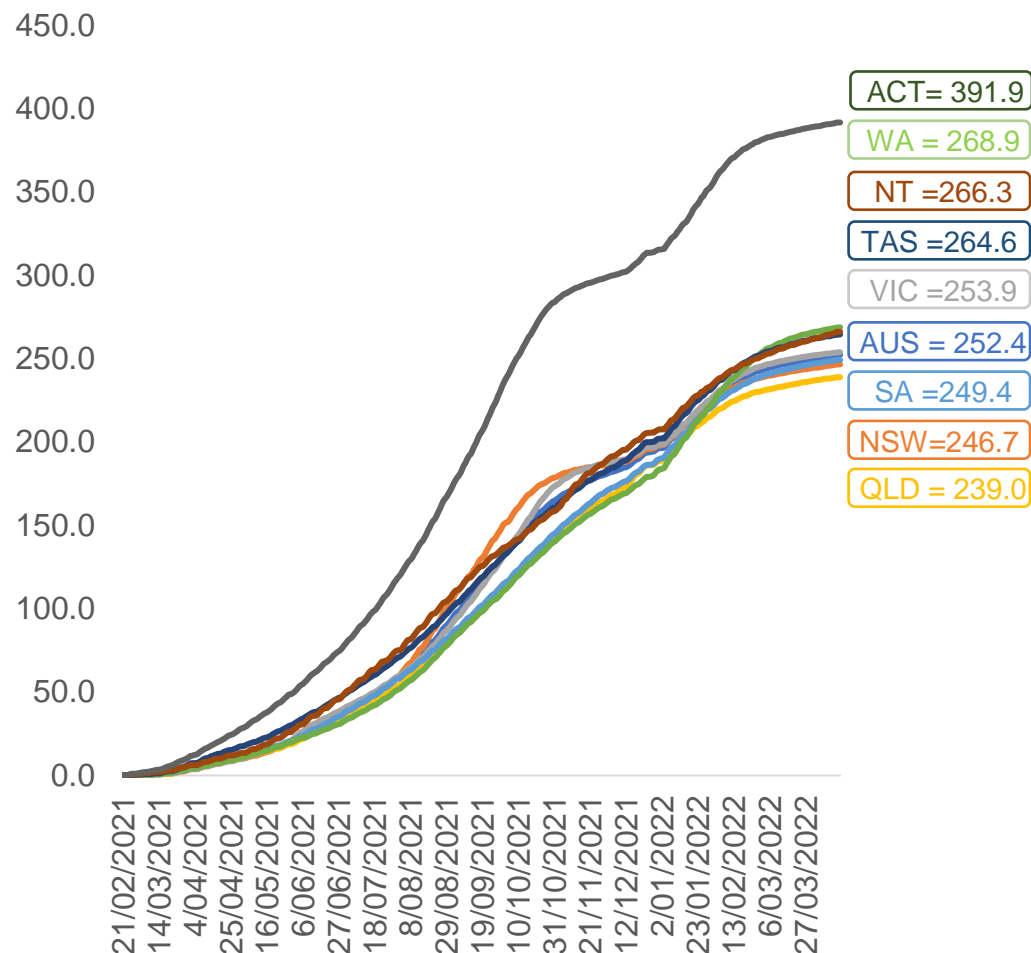


	AUS	ACT	NSW	NT	QLD	SA	TAS	VIC	WA
16 and over - dose 1	19,996,210	351,746	6,310,549	173,686	3,847,029	1,370,866	443,715	5,145,653	2,087,462
16 and over - dose 2	19,659,598	346,254	6,215,239	168,922	3,781,317	1,340,716	434,410	5,069,472	2,054,315
16 and over - population	20,619,959*	344,037	6,565,651	190,571	4,112,707	1,440,400	440,172	5,407,574	2,114,978
16 and over % with dose 1	96.98%	>99%	96.11%	91.14%	93.54%	95.17%	>99%	95.16%	98.70%
16 and over % with dose 2	95.34%	>99%	94.66%	88.64%	91.94%	93.08%	98.69%	93.75%	97.13%
5 to 11 - dose 1	1,200,577	31,927	357,396	13,222	209,674	84,246	28,783	326,472	140,979
5 to 11 - dose 2	779,457	24,782	234,237	7,460	136,097	55,504	21,738	212,606	83,122
5 to 11 - population	2,276,638	39,789	716,460	24,750	478,731	148,816	45,033	578,499	244,154
5 to 11 % with dose 1	52.73%	80.24%	49.88%	53.42%	43.80%	56.61%	63.92%	56.43%	57.74%
5 to 11 % with dose 2	34.24%	62.28%	32.69%	30.14%	28.43%	37.30%	48.27%	36.75%	34.04%
12 to 15 - dose 1	1,056,391	20,118	325,246	10,868	207,314	68,473	22,937	275,892	115,852
12 to 15 - dose 2	999,929	19,556	310,608	9,790	194,229	64,751	21,812	263,896	106,816
12 to 15 - population	1,243,990	19,693	390,330	13,060	270,146	82,747	26,308	308,611	132,869
12 to 15 % with dose 1	84.92%	>99%	83.33%	83.22%	76.74%	82.75%	87.19%	89.40%	87.19%
12 to 15 % with dose 2	80.38%	>99%	79.58%	74.96%	71.90%	78.25%	82.91%	85.51%	80.39%

*National population will not equal sum of listed jurisdictions due to a small number of people counted in national population residing in some 'other' territories. Sum of state doses will not add to national total as some records are unable to be geocoded to a State or Territory.
Doses sourced from Australian Immunisation Register, population from ABS ERP June 2020

Vaccinations by location

Cumulative total doses administered vs eligible state populations*

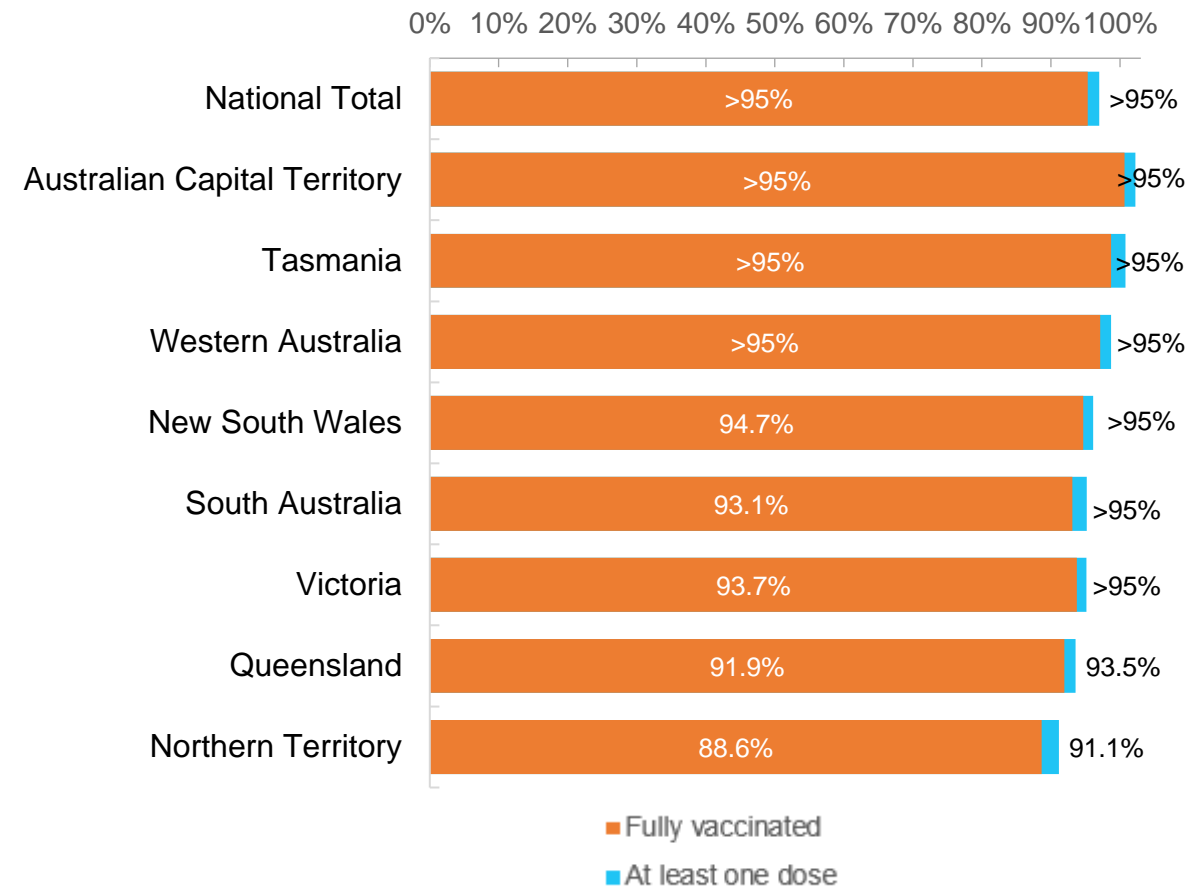


*Not an indication of percentage vaccinated, numbers will exceed 100 due to multiple doses required per person of the population. All doses are included for those aged 12 and above, and are based on vaccination provider location.

Data as at:
16 Apr 2022

Australia's COVID-19
Vaccine Roadmap

First and Second Doses by residential location



Aboriginal and Torres Strait Islander peoples

Number of people vaccinated

Data as at:
12 Apr 2022
Updated weekly

Australia's COVID-19
Vaccine Roadmap



437,196

people over the age of 16
have had at least one dose

84.3%

of people over the age of 16
have had at least one dose



416,954

people over the age of 16
are fully vaccinated

80.4%

of people over the age of 16 are
fully vaccinated



People aged 12 – 15 years

48,616

42,655

68.5%

At least one dose

60.1%

Fully vaccinated

178 Aboriginal community controlled health services (ACCHS)

0#

50

27

44

12

3

21

21

ACT

NSW

NT

QLD

SA

TAS

VIC

WA

Medicare Address State ^{##}	Individuals Dose 1	Individuals Dose 1 %	Individuals Dose 2	Individuals Dose 2 %
Australian Capital Territory	4,796	91.0%	4,675	88.7%
New South Wales	134,158	86.7%	130,995	84.6%
Northern Territory	41,651	89.4%	39,382	84.6%
Queensland	114,966	81.3%	109,250	77.2%
South Australia	19,740	79.8%	18,260	73.8%
Tasmania	13,816	88.4%	13,400	85.8%
Victoria	35,221	89.7%	34,411	87.6%
Western Australia	53,334	85.9%	48,841	78.7%
Unknown/Other Territories	19,514	68.2%	17,740	62.0%
Totals	437,196	84.3%	416,954	80.4%

Source: Australian Immunisation Register

*Identifying as Aboriginal and Torres Strait Islander is optional and the estimated population may be under reported.

**Includes all Aboriginal and Torres Strait Islander peoples who have received a vaccination, not limited to those administered in an ACCHS setting

#ACCHS in the ACT are currently operating as a Commonwealth Vaccine Clinics so not included to avoid double counting

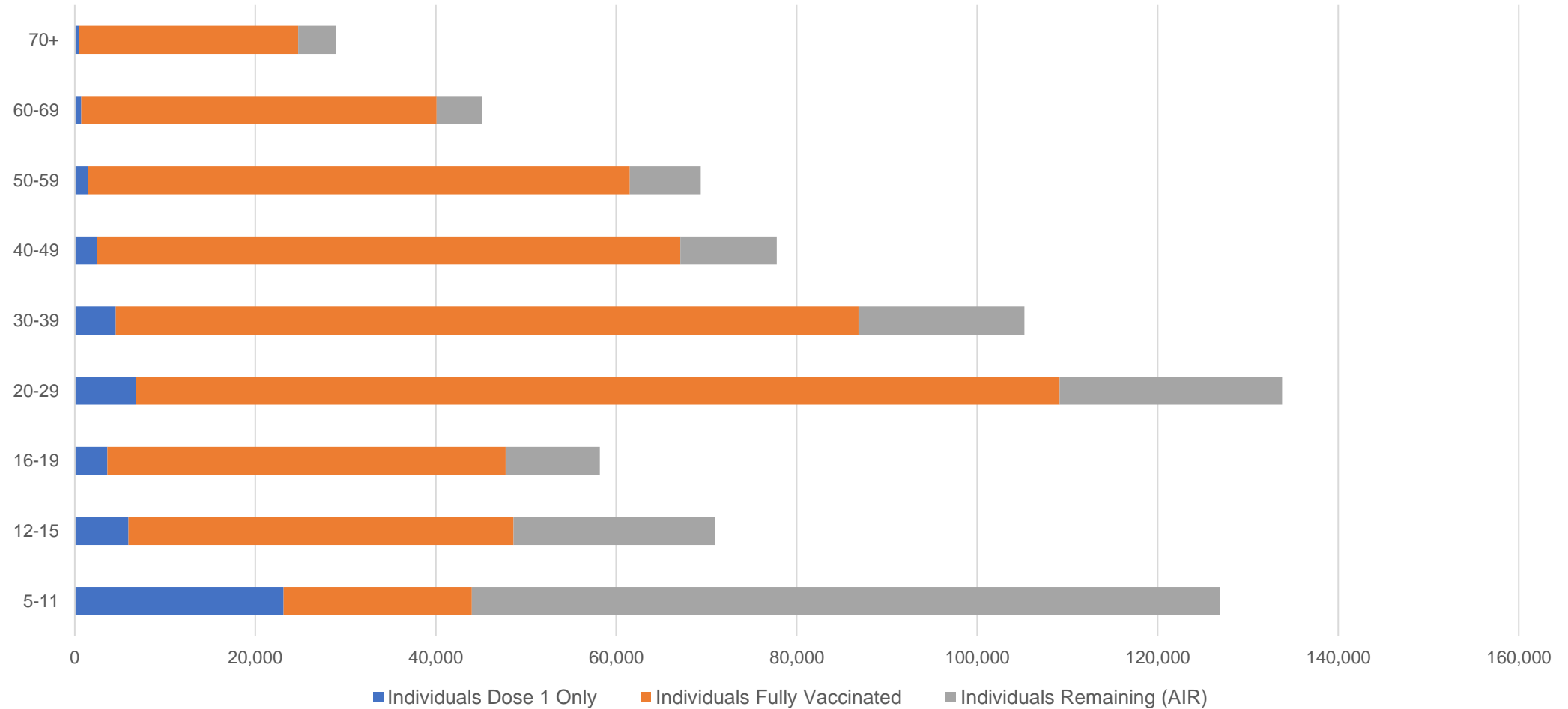
##The above table includes all identified Aboriginal and Torres Strait Islander people who are aged 16 and above by their state of residence.

Aboriginal and Torres Strait Islander peoples

Number of people vaccinated by age

Data as at:
12 Apr 2022
Updated weekly

Australia's COVID-19
Vaccine Roadmap



Source: Australian Immunisation Register

Commonwealth primary care

Data as at:
16 Apr 2022

Australia's COVID-19
Vaccine Roadmap



Primary care vaccine administration sites

5,793	128	178	3,596
GPs	CVCs	ACCHS	Pharmacies



34,986,574 total vaccine doses administered
primary care settings as at 16 April
+ 6,758 recorded in the last 24 hours

Primary care vaccinations by provider type

	Doses administered	Daily increase	7 day increase
General Practice* includes other Commonwealth	28,208,152	3,434	125,615
Pharmacy	6,778,422	3,324	67,295

NSW
12,108,294
(+1,506 daily increase)

VIC
8,708,311
(+1,212 daily increase)

QLD
6,719,671
(+1,380 daily increase)

WA
3,665,406
(+2,058 daily increase)

TAS
649,174
(+114 daily increase)

SA
2,072,008
(+395 daily increase)

ACT
549,787
(+185 daily increase)

NT
209,387
(+25 daily increase)

304,536

doses administered to persons
residing in other territories or with
missing residential information

*General practice includes Commonwealth Vaccination Clinics, Aboriginal Community Health Centres, Royal Flying Doctor Service and other Commonwealth vaccination facilities

Source: Australian Immunisation Register

Data as at:
16 Apr 2022

Commonwealth aged care and disability doses administered



1,270,783 (+ 100 last 24 hours)

Total vaccine doses administered in aged care and disability facilities as at 16 April

Number of doses administered as part of the Commonwealth aged and disability care rollout

NSW
558,821
(<10 daily increase)

VIC
234,984
(<10 daily increase)

QLD
202,299
(+79 daily increase)

WA
107,430
(+12 daily increase)

TAS
22,742
(<10 daily increase)

SA
83,883
(<10 #daily increase)

ACT
16,914
(<10 daily increase)

NT
7,498
(<10 daily increase)

36,212

doses administered to persons residing in other territories or with missing residential information

Source: Australian Immunisation Register

*Sourced from the Australian Immunisation Register. Includes all persons vaccinated at participating residential aged care, disability and related industry settings.

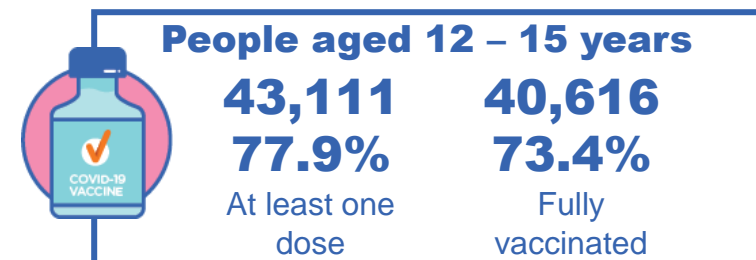
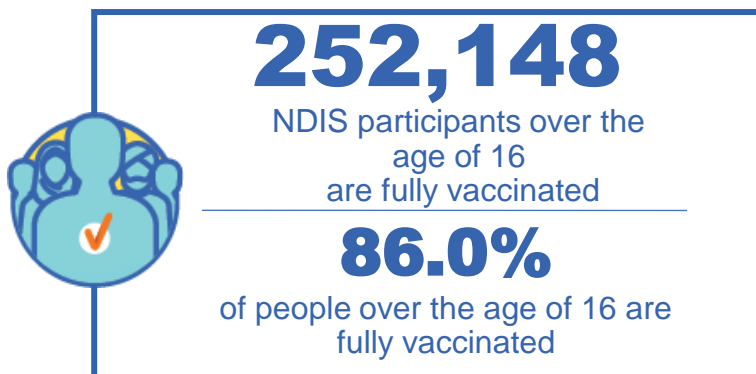
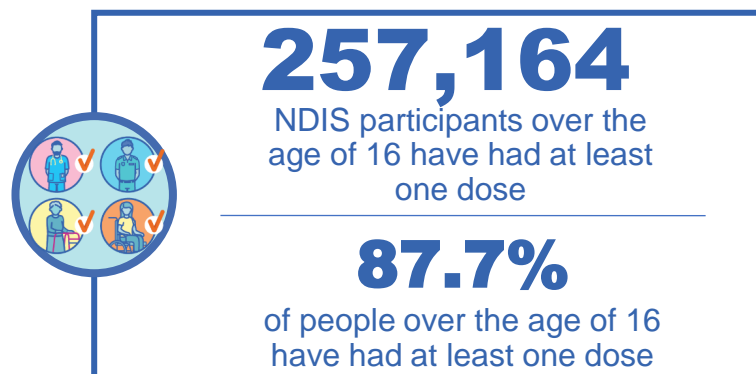
**State level breakdown indicates the residential location and may not align to the state in which the vaccination occurred.

#Numbers are calculated as difference in daily cumulative reported numbers to allow for historical corrections in all data sources. This can occasionally result in negative numbers, such as for SA, where historical details about doses have been updated.

National Disability Insurance Scheme (NDIS) reported vaccinations

Data as at:
14 April 2022
Updated weekly

Australia's COVID-19
Vaccine Roadmap



NDIS participant vaccinations

	People aged 16+ with at least one dose	People aged 16+ fully vaccinated	% People aged 16+ with at least one dose	% People aged 16+ fully vaccinated
ACT	4,860	4,794	89.6%	88.4%
NSW	79,019	77,712	88.1%	86.6%
NT	2,225	2,153	78.0%	75.5%
QLD	50,677	49,650	86.1%	84.4%
SA	20,982	20,441	85.5%	83.3%
TAS	6,443	6,282	87.6%	85.5%
VIC	68,437	67,206	88.9%	87.3%
WA	24,521	23,910	89.1%	86.9%
National	257,164	252,148	87.7%	86.0%

Source: Linkage between National Disability Insurance Agency data and the Australian Immunisation Register. Total NDIS participant numbers as at 28 February. Australian Immunisation Register data as at 13 April. Includes all participants regardless of residence type.

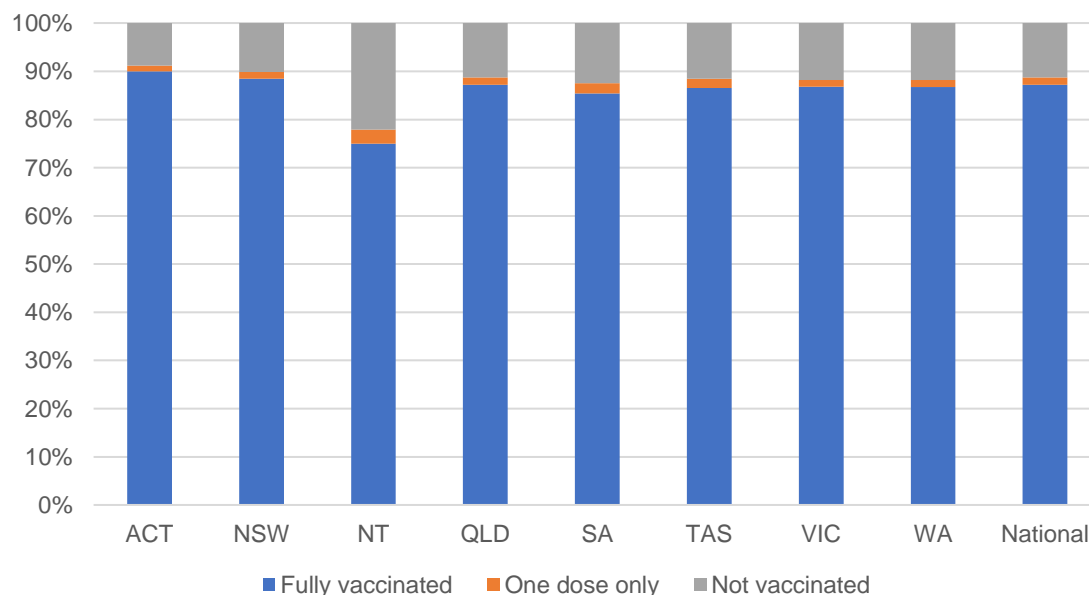
National Disability Insurance Scheme (NDIS) reported vaccinations

Data as at:
14 April 2022
Updated Weekly

Australia's COVID-19
Vaccine Roadmap

NATIONAL	Total people with at least one dose	People fully vaccinated	Total number of individuals in cohort	% People with at least one dose	% People fully vaccinated
NDIS participants living in disability accommodation	20,775	20,427	23,352	89.0%	87.5%

NDIS participants in disability and aged care accommodation



Source: Linkage between National Disability Insurance Agency data and the Australian Immunisation Register. Includes participants residing in disability accommodation only.
Source: Total NDIS participant numbers as at 28 February. Participant data as at 13 April. Australian Immunisation Register data as at 13 April. Worker data as at 12 April.

NDIS workforce vaccinations

	NDIS workers with at least one dose	NDIS workers fully vaccinated	% NDIS workers with at least one dose	% NDIS workers fully vaccinated
NSW	121,655	117,549	98.2%	94.9%
VIC	116,430	112,564	98.3%	95.1%
QLD	69,510	68,675	97.5%	96.3%
WA	32,953	31,252	98.5%	93.5%
SA	35,614	32,531	98.3%	89.8%
TAS	10,709	10,402	99.7%	96.8%
ACT	3,527	3,484	99.0%	97.8%
NT	3,430	3,270	99.4%	94.8%
TOTAL	393,828	379,727	98.2%	94.7%

Source: the NDIS Commission has established a requirement for registered NDIS providers who provide intensive disability support services to report on the vaccination status of workers they employ, or otherwise engage, to deliver NDIS-funded supports and services, and who are required to be vaccinated in accordance with in-force state and territory public health orders. The statistics reflect data reported to the NDIS Commission by registered NDIS providers and should be considered indicative and subject to change

Note: Some registered NDIS providers are yet to report on the vaccination status of their workforce. The NDIS Commission is working with those providers around reporting requirements.

Remaining workers not included include those exempt from vaccination requirements, workers whose vaccination status is not yet verified by the provider (such as workers on leave) and provider reporting anomalies.

Residential aged care vaccination rollout

Residential aged care facilities status

172,894

People fully vaccinated

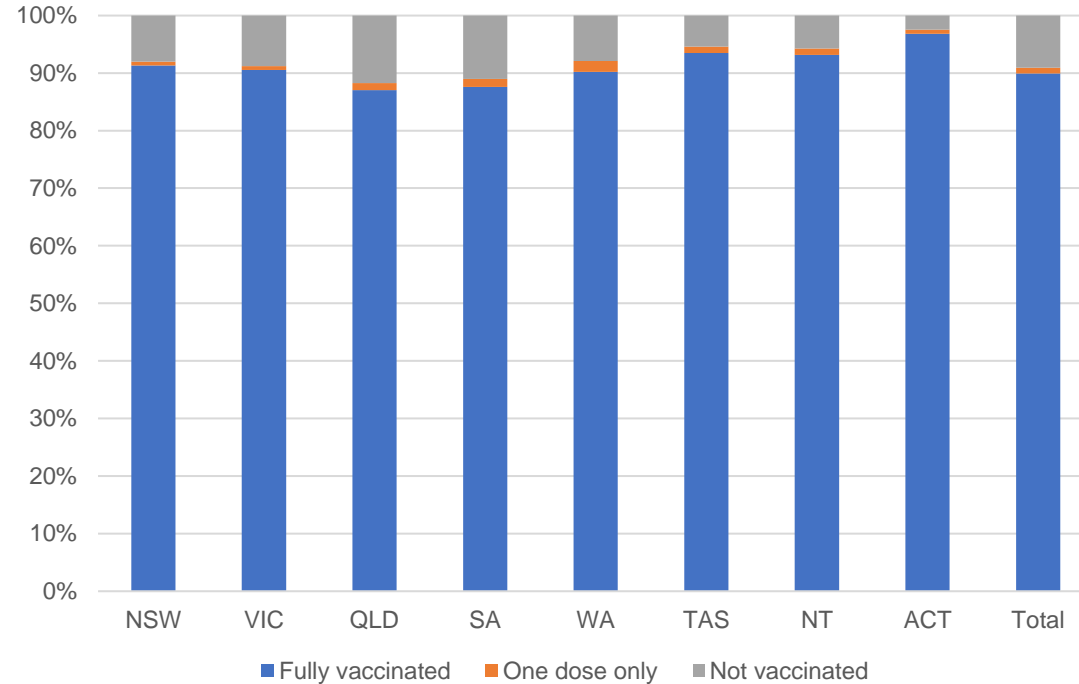
174,763

People with at least one dose

Australia's COVID-19 Vaccine Roadmap

Data as at:
14 Apr 2022
Updated weekly

Aged care resident vaccinations



Aged care worker vaccinations

Jurisdictions	Total workers with at least one dose	Workers fully vaccinated	% Workers with at least one dose	% Workers fully vaccinated
NSW	75,246	75,242	96.7%	96.7%
VIC	65,109	65,105	94.7%	94.7%
QLD	45,804	45,798	95.0%	95.0%
SA	26,133	26,116	96.1%	96.0%
WA	24,116	24,115	99.6%	99.6%
TAS	7,566	7,564	100.0%	100.0%
NT	884	884	100.0%	100.0%
ACT	2,969	2,969	100.0%	100.0%
Total	247,827	247,793	96.2%	96.2%

Source: My Aged Care Portal vaccination progress

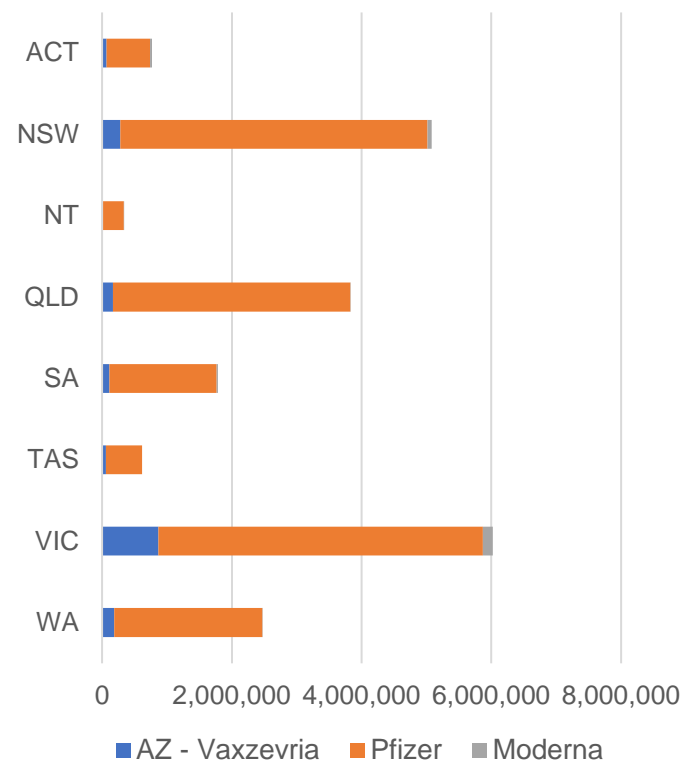
*Status updates are provided by facilities at least once per week. Reporting is updated Monday to Friday to encompass different facility updates being made on different days.

Data is sourced directly from Aged Care Service Providers and is not drawn or closely aligned with data from AIR due to inconsistencies and potential lags in uploading of records.

Data as at:
16 Apr 2022

Jurisdiction administered

Total vaccine doses administered in State and Territory clinics as at 16 April



20,916,789 total vaccine doses administered
in State and Territory clinics as at 16 April
+ **4,689** recorded in the last 24 hours
+ **70,526** recorded in the last 7 days

NSW
5,083,160
(+603 daily
increase)

VIC
6,028,791
(+937 daily
increase)

QLD
3,828,737
(+454 daily
increase)

WA
2,472,265
(+1,420 daily
increase)

TAS
616,390
(+174 daily
increase)

SA
1,787,467
(+705 daily
increase)

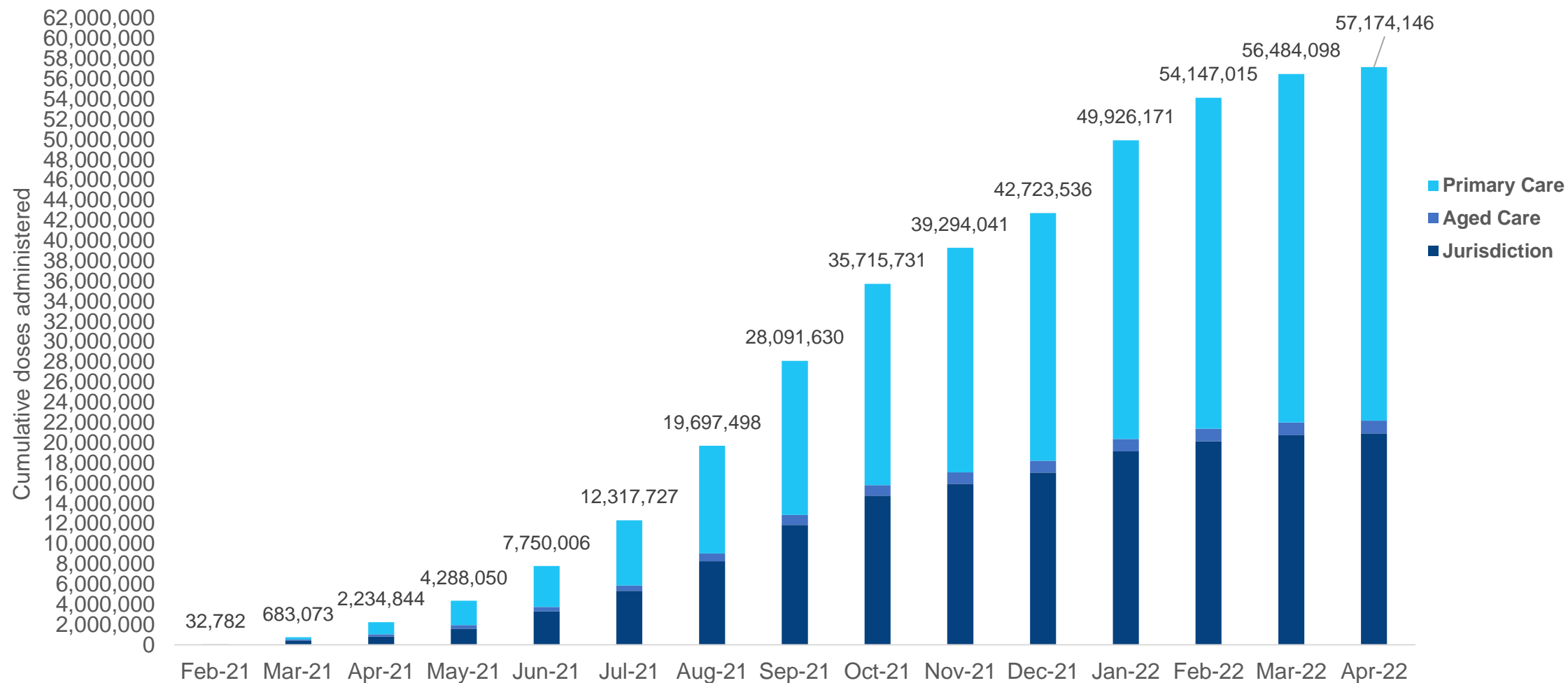
ACT
767,927
(+98 daily
increase)

NT
332,052
(+298 daily
increase)

*Sourced from the Australian Immunisation Register. Numbers are calculated as difference in daily cumulative reported numbers to allow for historical corrections.

Cumulative doses administered by channel

Data as at:
16 Apr 2022



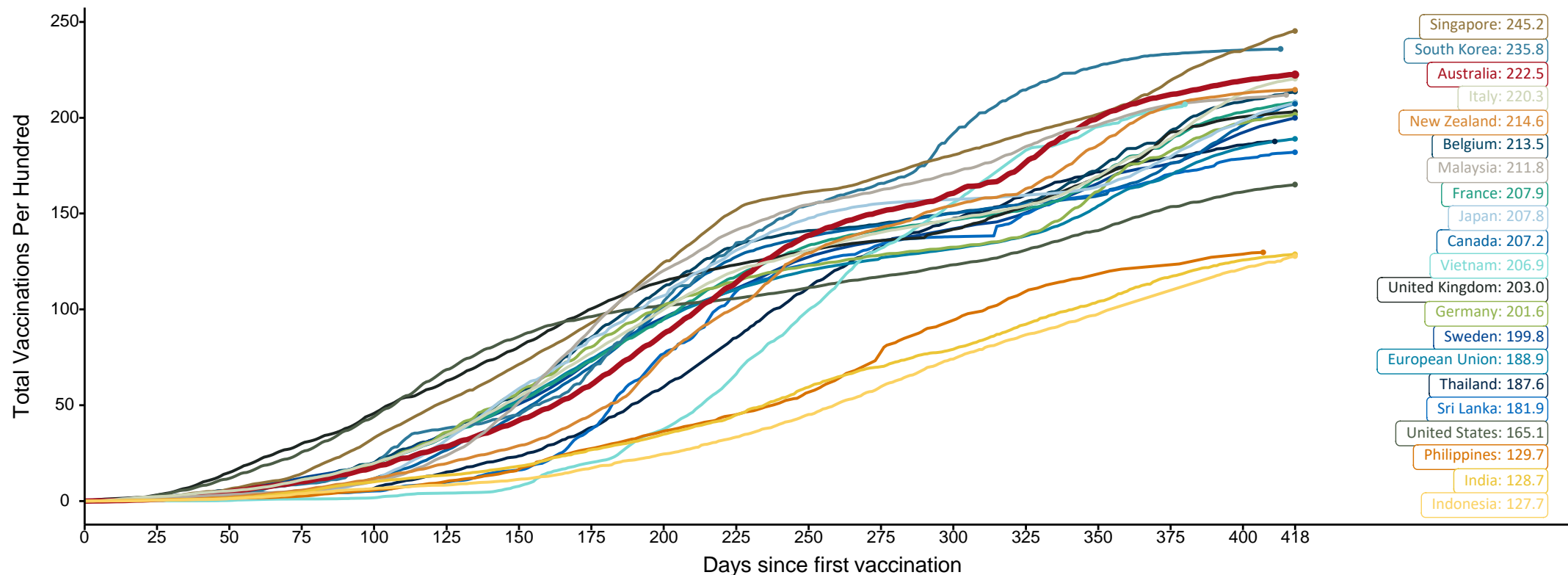
Source: Australian Immunisation Register

Doses at equivalent stages of rollout (Day 418)

Data as at:
16 Apr 2022

The x-axis is truncated at the length of Australia's vaccination program. Countries with intermittent reporting have had their doses per 100 imputed to Australia's current stage of rollout. Israel excluded as it is beyond scale of the graph

Cumulative doses administered (16 Apr): **57,174,146**



Note: From 11 January 2022, data for Australia includes all doses administered to people 5 and over. Prior to 11 January, data was for 12 and over.

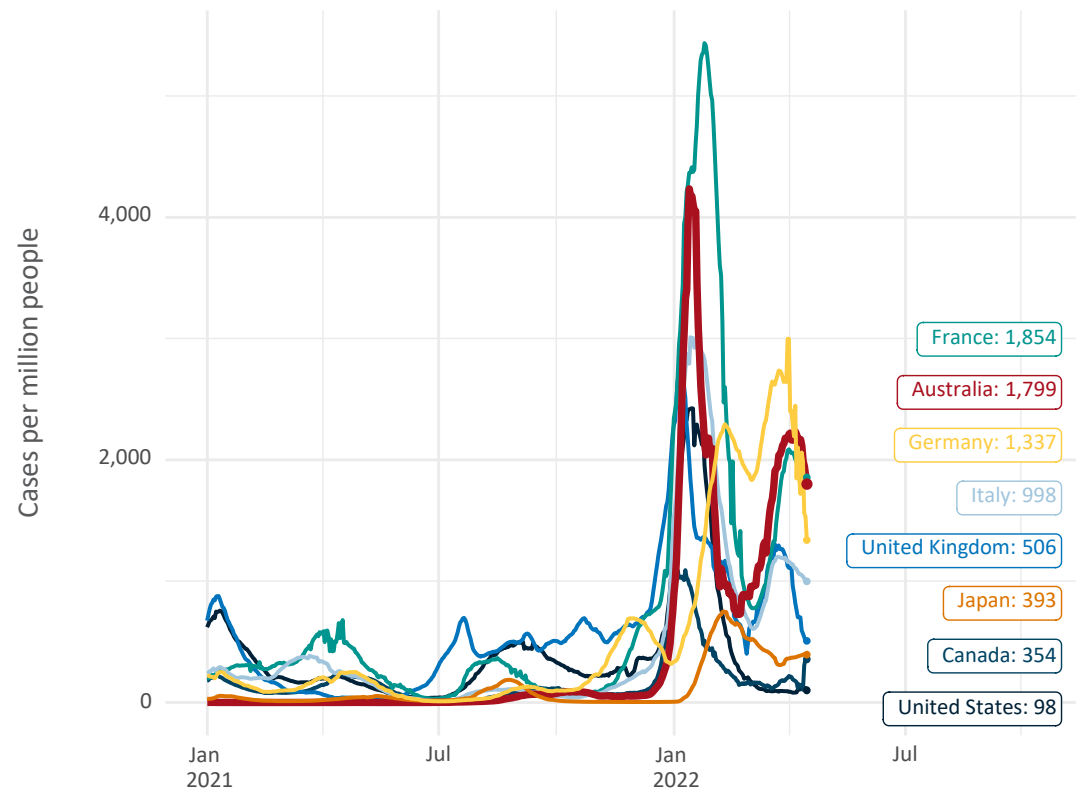
Source: Department of Health (Australia), Our World in Data (international)

Latest data: 16 April

Data as at:
16 Apr 2022

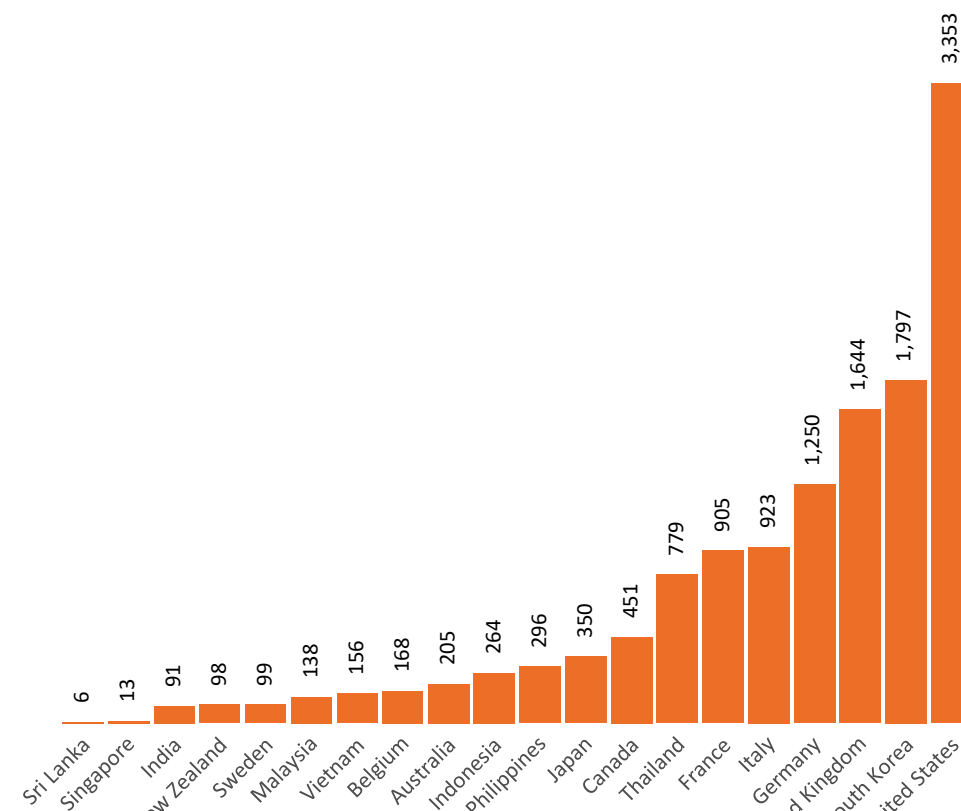
International data – COVID-19

New daily cases per million in 2021, Australia and G7 countries
Smoothed - 7 day average



Source: OWID
Data downloaded: 17 Apr 2022 08:59
Latest data: 15 Apr 2022

COVID-19 deaths in past 7 days - Australia and select countries



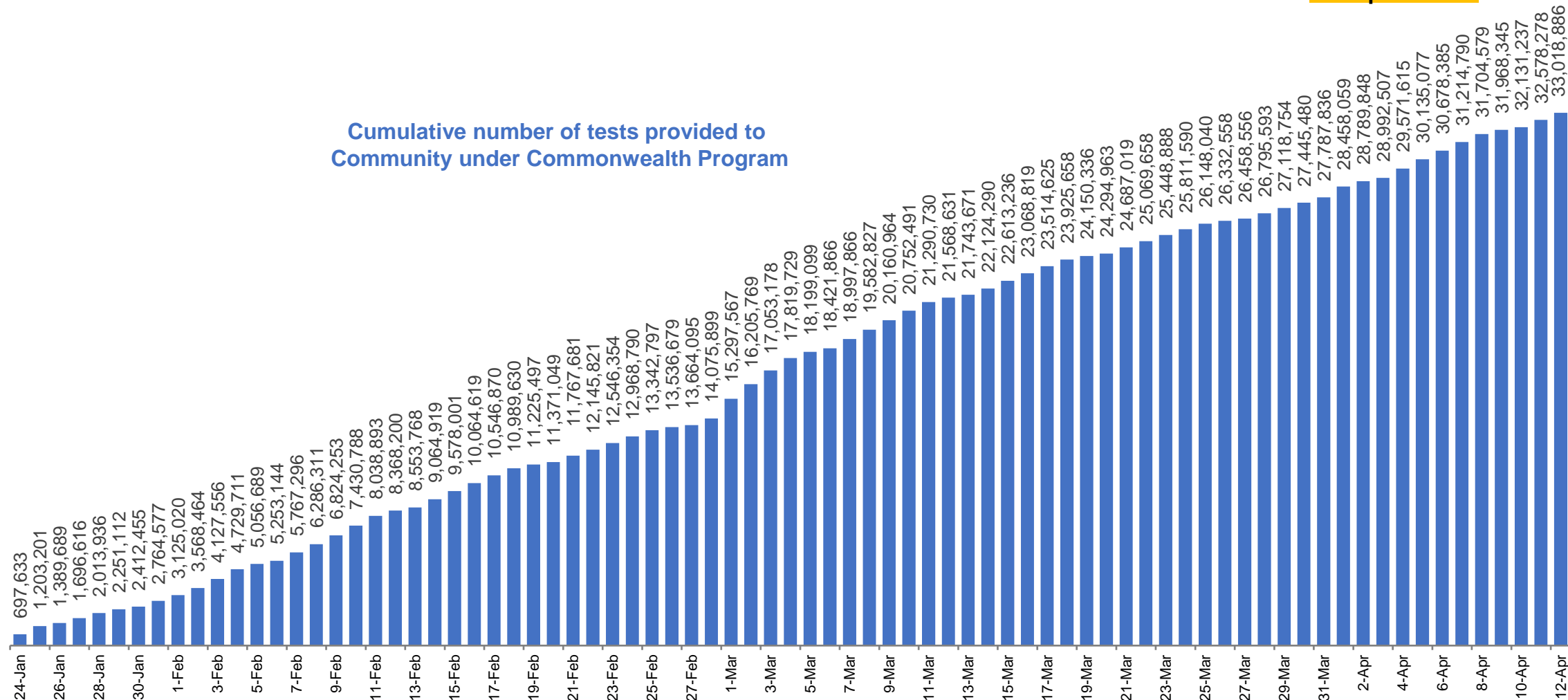
Source: OWID
Data downloaded: 17 Apr 2022 08:59
Latest data: 15 Apr 2022

Data as at
14 April 2022

Concessional rapid antigen test program

5,637 pharmacies have delivered over **33.0 million rapid antigen tests** to more than **4.6m eligible concession card holders** under the Government's concessional rapid antigen test program.

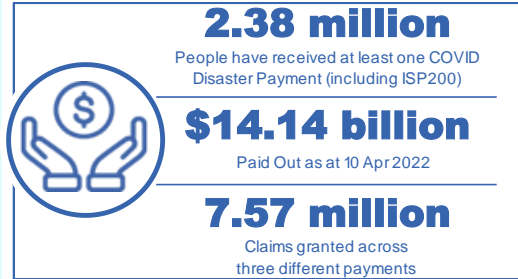
Cumulative number of tests provided to
Community under Commonwealth Program



Pandemic Response Payments

Australia's COVID-19
Vaccine Roadmap

Data as at midnight: 10 Apr 2022
Updated weekly



COVID Disaster Payment:	5.89 million claims received - 2.19 million individuals paid a total of \$12.59 billion.
\$200 Income Support Payment:	353,000 claims received - 183,000 individuals paid a total of \$268.9 million.
Pandemic Leave Disaster Payment:	1.80 million claims received - 1.12 million individuals paid a total of \$1.27 billion.



COVID Disaster Payment

assisting during a lockdown event in a Commonwealth hotspot.

Income Support Payment \$200

for income support recipients who lost at least 8 hours of work.

Pandemic Leave Disaster Payment

for those who have to self-isolate, quarantine or care.

For more information visit:
servicesaustralia.gov.au

COVID-19 DISASTER PAYMENTS

Northern Territory

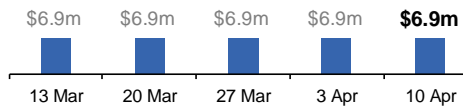
Lockdown (#3) from 16 Nov to 22 Nov
Claiming period ended 27 Dec

7,500 people have received at least one COVID Disaster Payment.

\$6.9m paid out as at 10 Apr 2022.

Nil paid in initial payments in the week ending 10 Apr 2022.

Cumulative payments made by Territory since activation on 25 Aug 2021.



Victoria

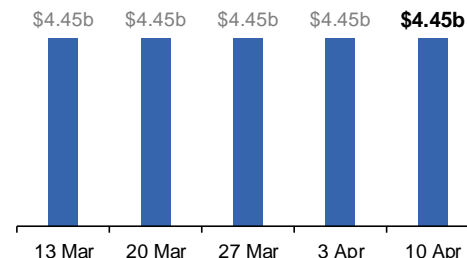
Lockdown (#6) from 6 Aug to 28 Oct
Claiming period ended 9 Dec

745,000 people have received at least one COVID Disaster Payment.

\$4.45b paid out as at 10 Apr 2022.

\$750 paid in initial and reoccurring payments in the week ending 10 Apr 2022.

Cumulative payments made by State since activation on 8 Jun 2021.



New South Wales

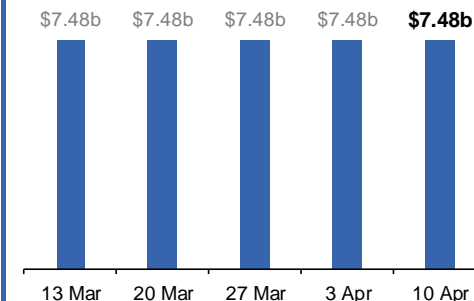
Lockdown from 24 Jun to 10 Oct
Claiming period ended 27 Nov

1.08m people have received at least one COVID Disaster Payment.

\$7.48b paid out as at 10 Apr 2022.

\$750 paid in initial and reoccurring payments in the week ending 10 Apr 2022.

Cumulative payments made by State since activation on 1 Jul 2021.



Australian Capital Territory

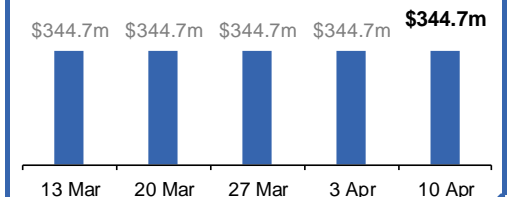
Lockdown from 12 Aug to 14 Oct
Claiming period ended 25 Nov

65,000 people have received at least one COVID Disaster Payment.

\$344.7m paid out as at 10 Apr 2022.

Nil paid in initial and reoccurring payments in the week ending 10 Apr 2022.

Cumulative payments made by Territory since activation on 20 Aug 2021.



Pandemic Response Payments (continued)

Data as at midnight: 10 Apr 2022
Updated weekly

COVID-19 DISASTER PAYMENTS

Tasmania

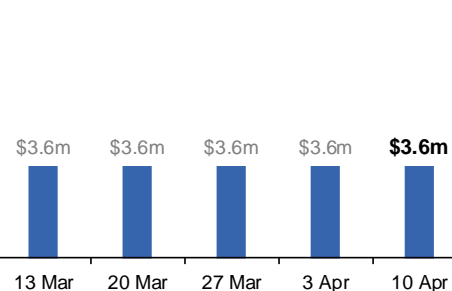
Lockdown from 15 Oct to 18 Oct
Claiming period ended 12 Nov

6,900 people have received at least one COVID Disaster Payment.

\$3.6m paid out as at 10 Apr 2022.

Nil paid in initial and reoccurring payments in the week ending 10 Apr 2022.

Cumulative payments made by State since activation on 22 Oct 2021.



Queensland

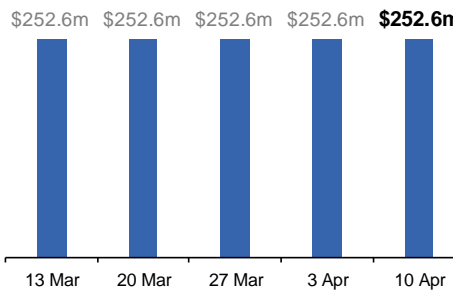
Lockdown from 31 Jul to 11 Aug
Claiming period ended 28 Aug

196,000 people have received at least one COVID Disaster Payment.

\$252.6m paid out as at 10 Apr 2022.

Nil paid in initial and reoccurring payments in the week ending 10 Apr 2022.

Cumulative payments made by State since activation on 7 Aug 2021.



South Australia

Lockdown from 21 to 27 Jul
Claiming period ended 17 Aug

86,000 people have received at least one COVID Disaster Payment.

\$48.2m paid out as at 10 Apr 2022.

Nil paid in initial and reoccurring payments in the week ending 10 Apr 2022.

Cumulative payments made by State since activation on 28 Jul 2021.

