



Australian Government
Operation COVID Shield

COVID-19 Vaccine Roll-out

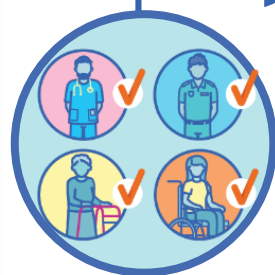
12 April 2022

Data as at:
11 Apr 2022

Total vaccine doses



56,988,625 total vaccine
doses administered nationally as at 11 April
+65,060 recorded in the last 24 hours



19,987,326

people have had at least one
dose

>95%

of people over the age of 16
have had at least one dose



19,648,948

people are fully vaccinated

>95%

of people over the age of 16 are
fully vaccinated



13,166,377

people over the age of 16
who have received more
than two doses

NSW
17,692,590
(+24,882 daily
increase)

VIC
15,009,767
(+14,318 daily
increase)

QLD
10,793,795
(+10,007 daily
increase)

WA
6,244,282
(+7,284 daily
increase)

TAS
1,282,065
(+2,268 daily
increase)

SA
3,926,314
(+3,505 daily
increase)

ACT
1,479,205
(+1,935 daily
increase)

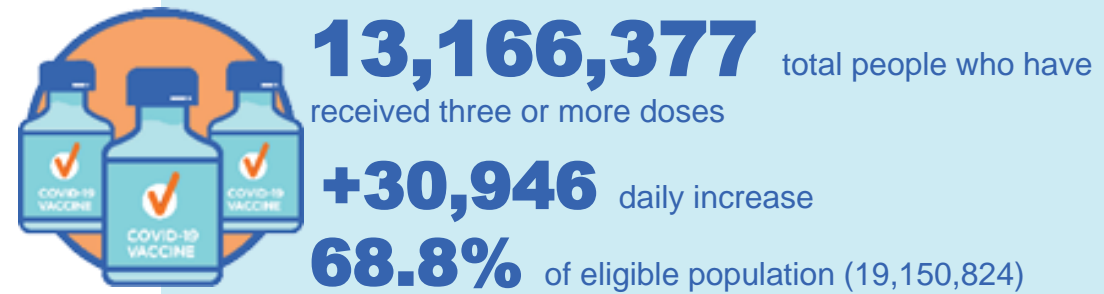
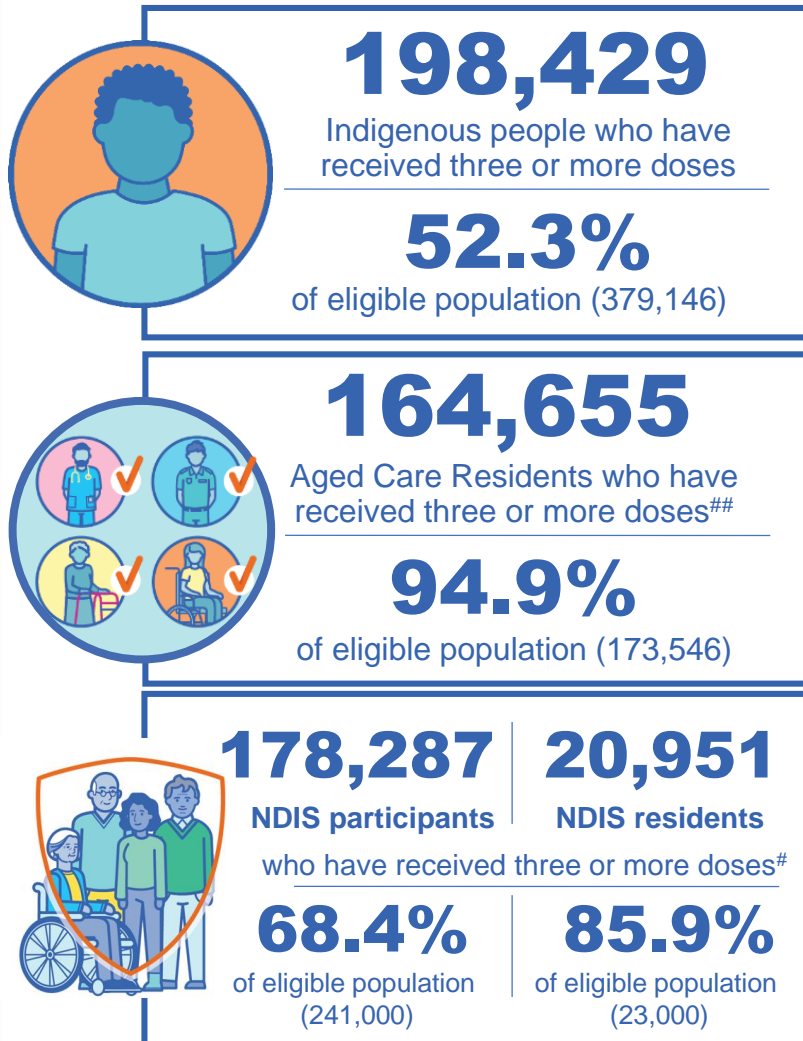
NT
560,607
(+861 daily
increase)

*Administration state breakdown indicates state in which a vaccine was administered

**Overall dose count includes instances of more than three doses per person in a small number of cases.

Source: Australian Immunisation Register

Booster Vaccinations



Data as at:
11 Apr 2022

	Number of People	Daily Increase	% of Eligible
NSW	4,030,925	12,216	65.3%
VIC	3,542,416	5,751	70.5%
QLD	2,279,963	4,646	62.5%
WA	1,594,112	4,150	86.1%
SA	932,151	1,818	72.1%
TAS	299,853	945	71.7%
ACT	262,498	357	76.3%
NT	114,900	544	70.7%

*People may belong to multiple groups and could be represented in the above breakdowns multiple times.
NDIS participants data as at 8 April 2022. ## Aged Care Residents data as at 11 April 2022.

Source: Australian Immunisation Register

109,559 doses administered to persons residing in other territories or with missing residential information

Vaccinations by residential location

Australia's COVID-19 Vaccine Roadmap

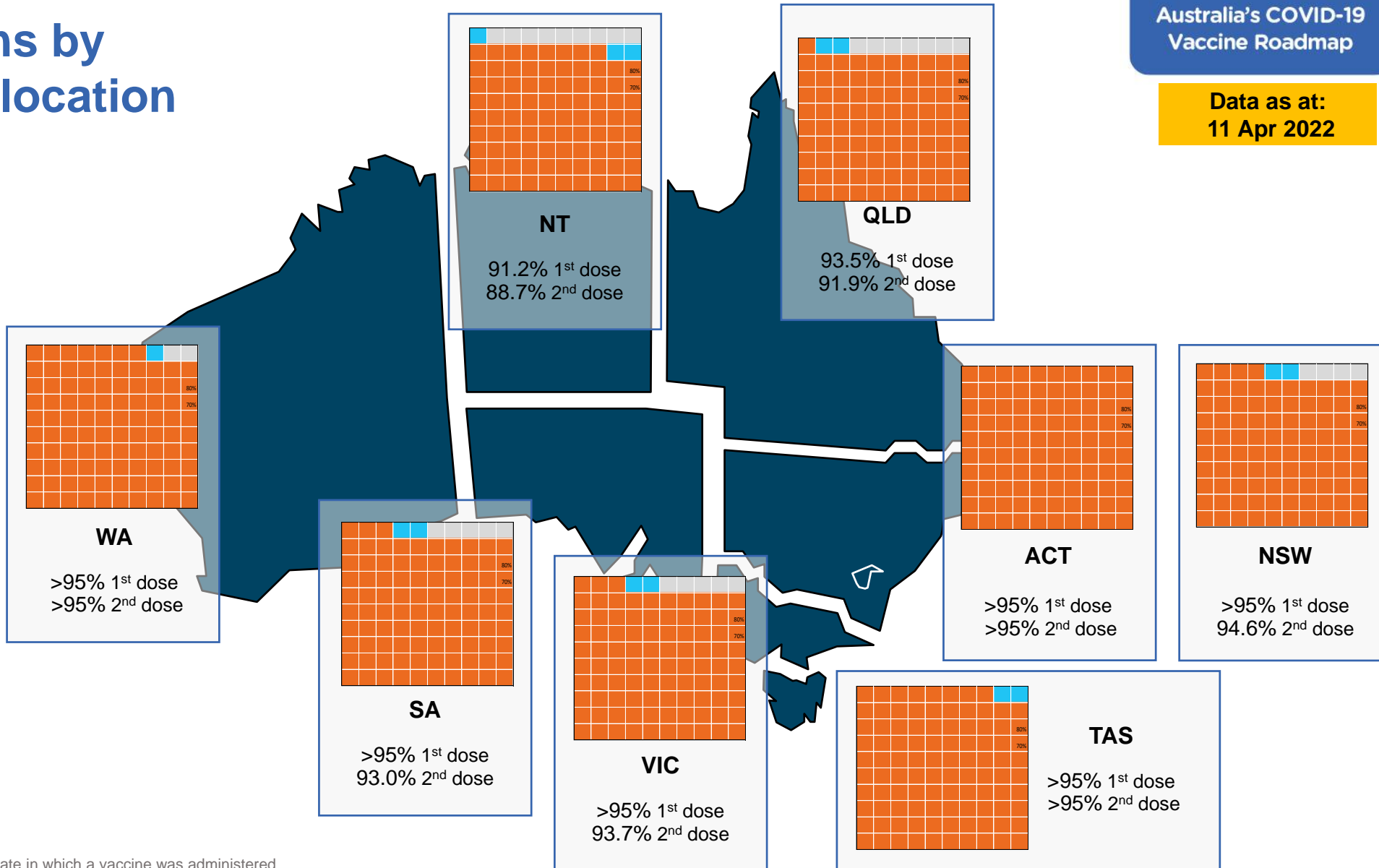
Data as at:
11 Apr 2022

First doses

Age	Today	4 weeks ago	8 weeks ago
16+	>95%	>95%	>95%
50+	>95%	>95%	>95%
70+	>95%	>95%	>95%

Fully vaccinated

Age	Today	4 weeks ago	8 weeks ago
16+	>95%	94.9%	94.4%
50+	>95%	>95%	>95%
70+	>95%	>95%	>95%



*Residential state may differ from the state in which a vaccine was administered

Commonwealth and Jurisdiction vaccine doses administered

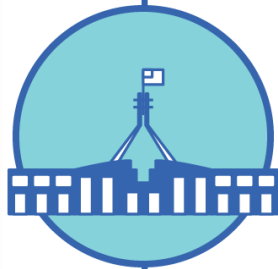
Data as at:
11 Apr 2022



56,988,625 total vaccine
doses administered nationally as at 11 April
+ 65,060 recorded in the last 24 hours



20,870,958
doses administered by state
and territory facilities
+ 17,965
recorded in the last 24 hours



36,117,667
doses administered by
commonwealth facilities
+ 47,095
recorded in the last 24 hours

34,848,184 total vaccine doses
administered in primary care settings
1,269,483 total vaccine doses
administered in aged care and disability
settings

NSW	Jurisdictions	Commonwealth
Cumulative	5,074,976	12,617,614
Daily increase	6,741	18,141

VIC	Jurisdictions	Commonwealth
Cumulative	6,018,042	8,991,725
Daily increase	3,821	10,497

QLD	Jurisdictions	Commonwealth
Cumulative	3,821,520	6,972,275
Daily increase	1,388	8,619

WA	Jurisdictions	Commonwealth
Cumulative	2,464,160	3,780,122
Daily increase	1,958	5,326

TAS	Jurisdictions	Commonwealth
Cumulative	615,425	666,640
Daily increase	1,323	945

SA	Jurisdictions	Commonwealth
Cumulative	1,782,923	2,143,391
Daily increase	1,017	2,488

ACT	Jurisdictions	Commonwealth
Cumulative	764,206	714,999
Daily increase	1,153	782

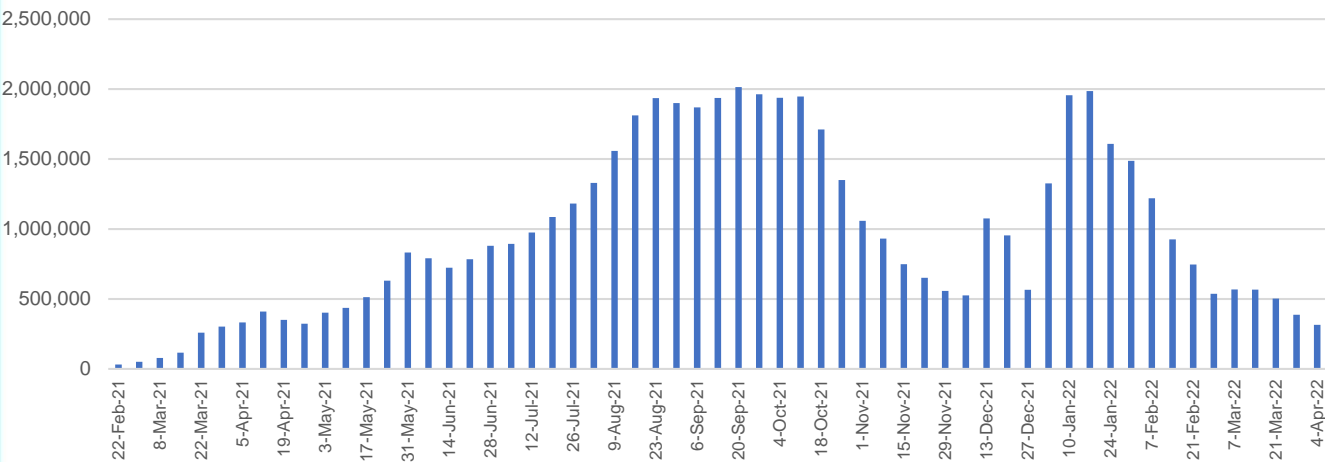
NT	Jurisdictions	Commonwealth
Cumulative	329,706	230,901
Daily increase	564	297

Vaccine milestone charts

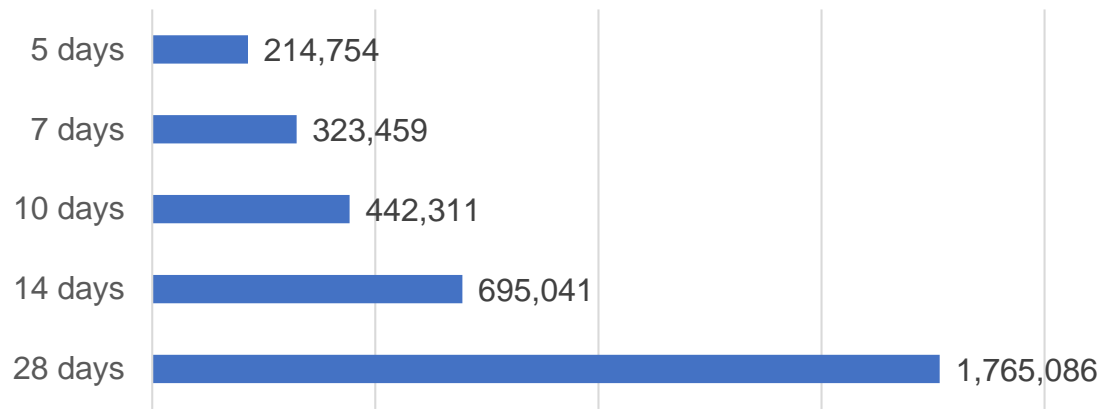
Data as at:
11 Apr 2022

Australia's COVID-19
Vaccine Roadmap

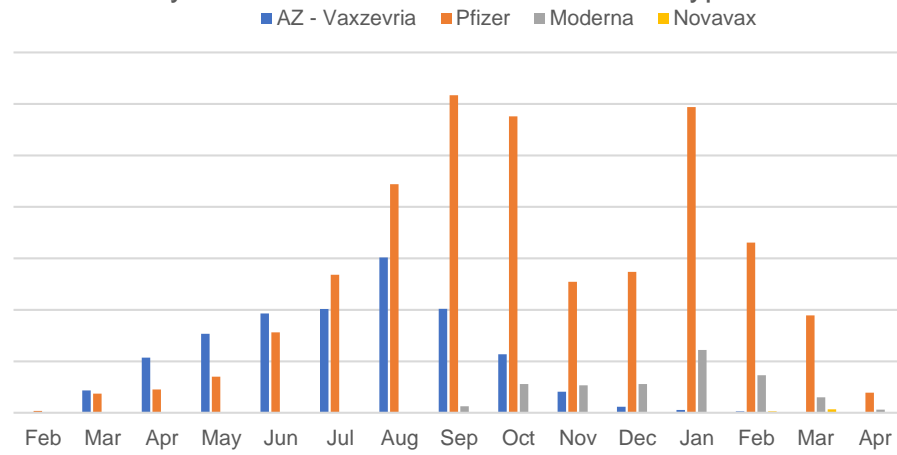
Doses Administered by Week



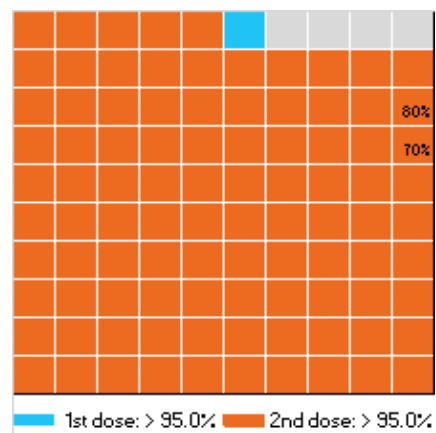
Doses Reported



Doses by administration month and vaccine type



Eligible population percentage coverage



*Each square represents 1% of the national population.
Squares are filled as milestones are achieved.

*Sourced from the Australian Immunisation Register.

Doses by age and sex

First and second doses by age and sex

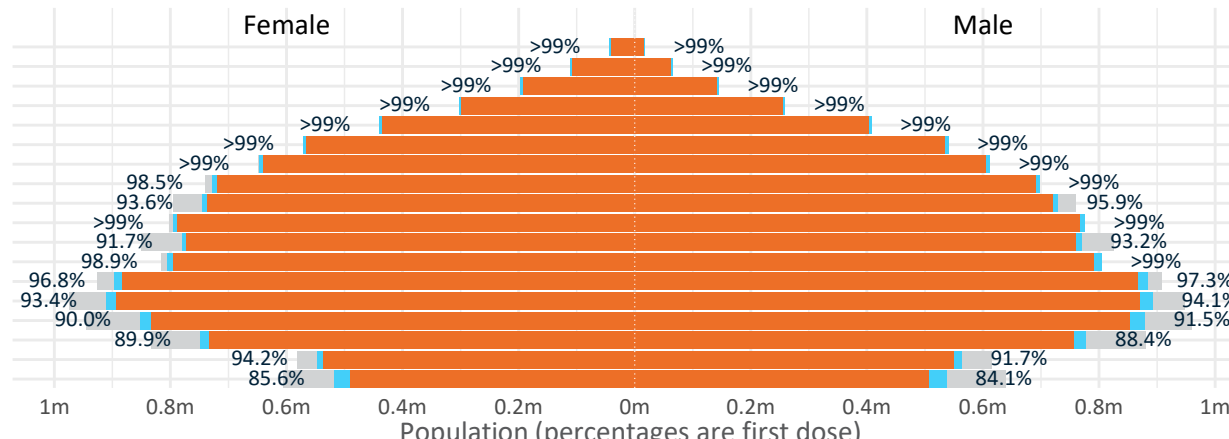
Australia's COVID-19
Vaccine Roadmap

Data as at:
11 Apr 2022

Age	Dose 1	Dose 2
95+	61,037 (>99%)	57,637 (>99%)
90-94	175,909 (>99%)	170,215 (>99%)
85-89	341,907 (>99%)	334,805 (>99%)
80-84	561,531 (>99%)	554,098 (>99%)
75-79	848,245 (>99%)	839,722 (>99%)
70-74	1,113,106 (>99%)	1,102,076 (>99%)
65-69	1,261,205 (>99%)	1,246,816 (>99%)
60-64	1,427,533 (>99%)	1,411,166 (98.2%)
55-59	1,475,407 (94.8%)	1,458,689 (93.8%)
50-54	1,573,213 (>99%)	1,555,821 (>99%)
45-49	1,551,950 (92.6%)	1,532,792 (91.4%)
40-44	1,613,549 (>99%)	1,588,752 (98.1%)
35-39	1,785,147 (97.3%)	1,752,451 (95.5%)
30-34	1,811,703 (94.2%)	1,769,547 (92.0%)
25-29	1,741,243 (91.3%)	1,693,661 (88.8%)
20-24	1,532,903 (89.5%)	1,493,438 (87.2%)
16-19	1,111,738 (93.0%)	1,087,262 (90.9%)
12-15	1,055,923 (84.9%)	998,611 (80.3%)

	16+	50+	12-15	5-11
Dose 1	96.93% (19,987,326 doses / 20,619,959 people)	>99% (8,839,093 doses / 8,749,703 people)	84.88% (1,055,923 doses / 1,243,990 people)	52.65% (1,198,718 doses / 2,276,638 people)
Dose 2	95.29% (19,648,948 doses / 20,619,959 people)	>99% (8,731,045 doses / 8,749,703 people)	80.27% (998,611 doses / 1,243,990 people)	32.90% (749,105 doses / 2,276,638 people)

Dose 1 Dose 2 Population

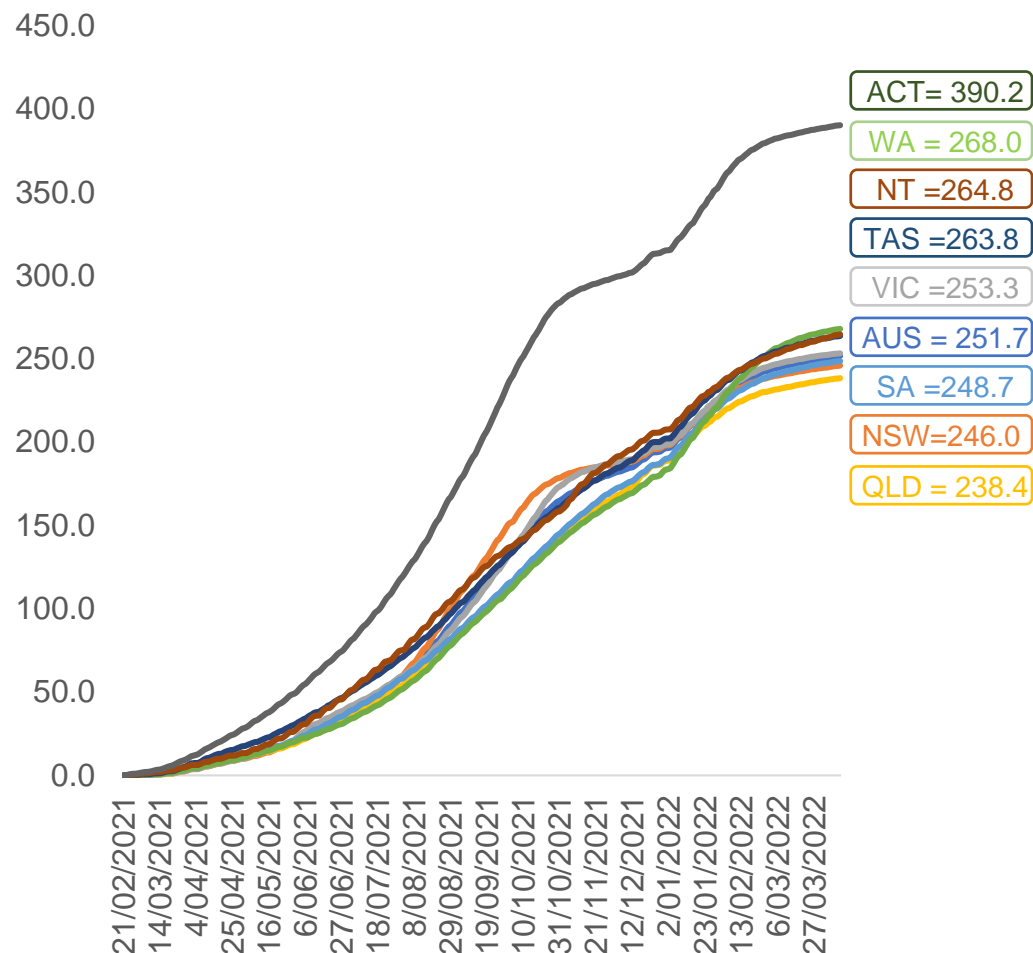


	AUS	ACT	NSW	NT	QLD	SA	TAS	VIC	WA
16 and over - dose 1	19,987,326	351,627	6,308,040	173,735	3,845,162	1,370,198	443,528	5,143,591	2,086,435
16 and over - dose 2	19,648,948	346,144	6,213,057	168,960	3,778,686	1,339,840	434,154	5,067,367	2,052,338
16 and over - population	20,619,959*	344,037	6,565,651	190,571	4,112,707	1,440,400	440,172	5,407,574	2,114,978
16 and over % with dose 1	96.93%	>99%	96.08%	91.17%	93.49%	95.13%	>99%	95.12%	98.65%
16 and over % with dose 2	95.29%	>99%	94.63%	88.66%	91.88%	93.02%	98.63%	93.71%	97.04%
5 to 11 - dose 1	1,198,718	31,914	356,838	13,203	209,404	84,215	28,813	326,029	140,416
5 to 11 - dose 2	749,105	24,187	225,874	7,120	131,007	53,921	21,555	203,717	77,997
5 to 11 - population	2,276,638	39,789	716,460	24,750	478,731	148,816	45,033	578,499	244,154
5 to 11 % with dose 1	52.65%	80.21%	49.81%	53.35%	43.74%	56.59%	63.98%	56.36%	57.51%
5 to 11 % with dose 2	32.90%	60.79%	31.53%	28.77%	27.37%	36.23%	47.86%	35.21%	31.95%
12 to 15 - dose 1	1,055,923	20,102	325,100	10,873	207,266	68,459	22,932	275,800	115,665
12 to 15 - dose 2	998,611	19,528	310,353	9,776	194,008	64,706	21,804	263,589	106,355
12 to 15 - population	1,243,990	19,693	390,330	13,060	270,146	82,747	26,308	308,611	132,869
12 to 15 % with dose 1	84.88%	>99%	83.29%	83.25%	76.72%	82.73%	87.17%	89.37%	87.05%
12 to 15 % with dose 2	80.27%	>99%	79.51%	74.85%	71.82%	78.20%	82.88%	85.41%	80.05%

*National population will not equal sum of listed jurisdictions due to a small number of people counted in national population residing in some 'other' territories. Sum of state doses will not add to national total as some records are unable to be geocoded to a State or Territory.
Doses sourced from Australian Immunisation Register, population from ABS ERP June 2020

Vaccinations by location

Cumulative total doses administered vs eligible state populations*

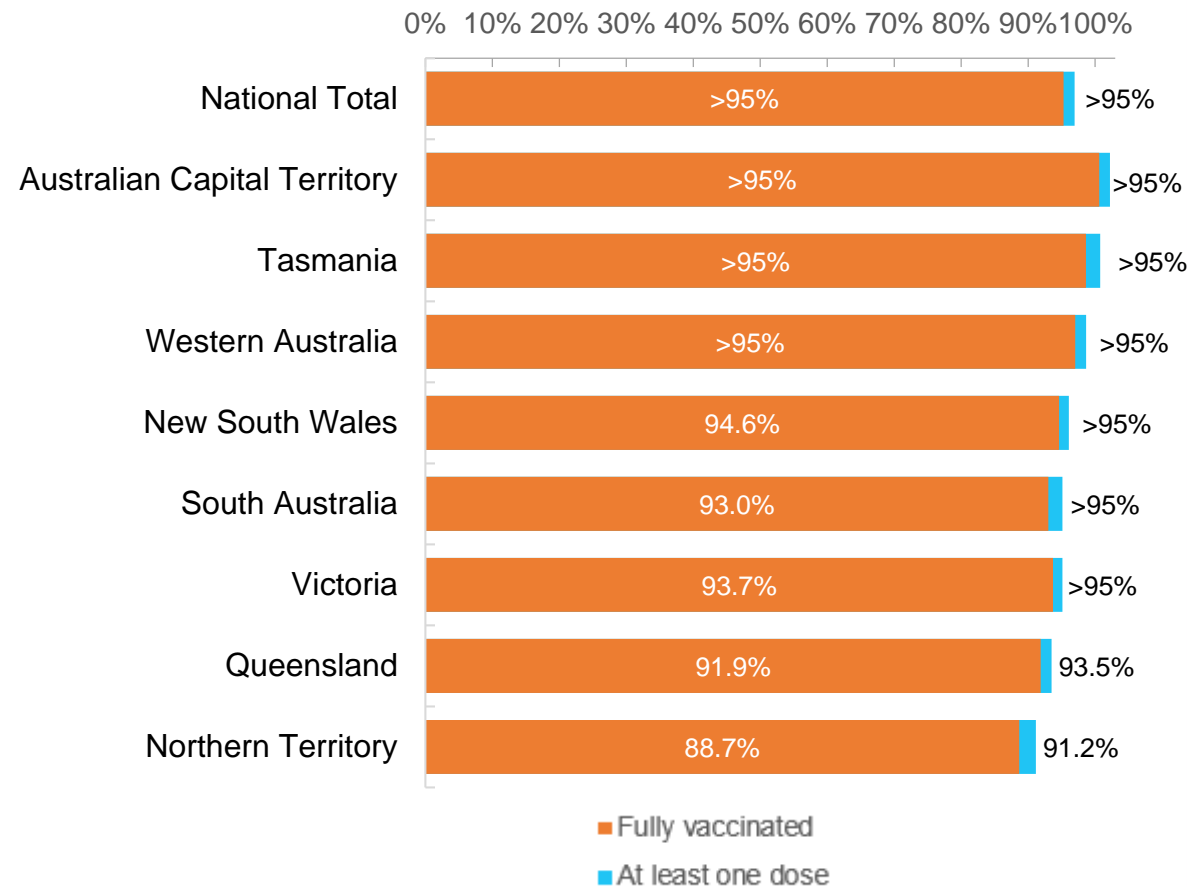


*Not an indication of percentage vaccinated, numbers will exceed 100 due to multiple doses required per person of the population. All doses are included for those aged 12 and above, and are based on vaccination provider location.

Data as at:
11 Apr 2022

Australia's COVID-19
Vaccine Roadmap

First and Second Doses by residential location



Aboriginal and Torres Strait Islander peoples

Number of people vaccinated

Data as at:
05 Apr 2022
Updated weekly

Australia's COVID-19
Vaccine Roadmap



436,589

people over the age of 16
have had at least one dose

84.3%

of people over the age of 16
have had at least one dose



415,873

people over the age of 16
are fully vaccinated

80.3%

of people over the age of 16 are
fully vaccinated



People aged 12 – 15 years

48,654

42,576

68.5%

At least one dose

59.9%

Fully vaccinated

178 Aboriginal community controlled health services (ACCHS)

0#

50

27

44

12

3

21

21

ACT

NSW

NT

QLD

SA

TAS

VIC

WA

Medicare Address State ^{##}	Individuals Dose 1	Individuals Dose 1 %	Individuals Dose 2	Individuals Dose 2 %
Australian Capital Territory	4,812	91.1%	4,691	88.8%
New South Wales	134,182	86.6%	131,000	84.6%
Northern Territory	42,007	89.4%	39,676	84.5%
Queensland	115,056	81.3%	109,175	77.1%
South Australia	19,747	79.7%	18,252	73.7%
Tasmania	13,790	88.3%	13,366	85.6%
Victoria	35,216	89.7%	34,393	87.6%
Western Australia	53,460	85.7%	48,749	78.1%
Unknown/Other Territories	18,319	66.9%	16,571	60.6%
Totals	436,589	84.3%	415,873	80.3%

Source: Australian Immunisation Register

*Identifying as Aboriginal and Torres Strait Islander is optional and the estimated population may be under reported.

**Includes all Aboriginal and Torres Strait Islander peoples who have received a vaccination, not limited to those administered in an ACCHS setting

#ACCHS in the ACT are currently operating as a Commonwealth Vaccine Clinics so not included to avoid double counting

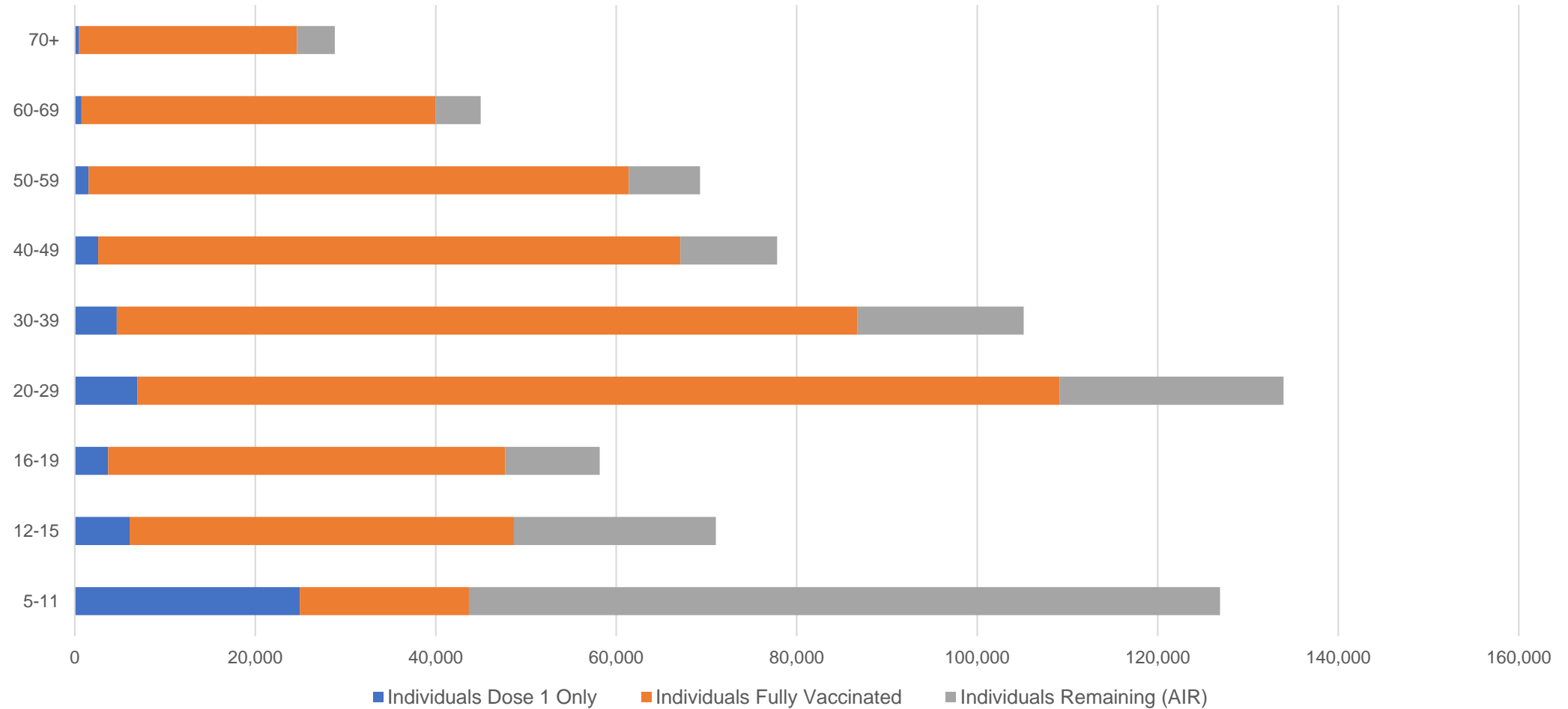
##The above table includes all identified Aboriginal and Torres Strait Islander people who are aged 16 and above by their state of residence.

Aboriginal and Torres Strait Islander peoples

Number of people vaccinated by age

Data as at:
05 Apr 2022
Updated weekly

Australia's COVID-19
Vaccine Roadmap



Source: Australian Immunisation Register

Commonwealth primary care

Data as at:
11 Apr 2022

Australia's COVID-19
Vaccine Roadmap



Primary care vaccine administration sites

5,790	128	178	3,594
GPs	CVCs	ACCHS	Pharmacies



34,848,184 total vaccine doses administered
primary care settings as at 11 April
+ 46,919 recorded in the last 24 hours

Primary care vaccinations by provider type

	Doses administered	Daily increase	7 day increase
General Practice* includes other Commonwealth	28,118,073	30,632	157,464
Pharmacy	6,730,111	16,287	87,954

NSW
12,061,282
(+17,857 daily increase)

VIC
8,677,327
(+10,346 daily increase)

QLD
6,692,864
(+8,591 daily increase)

WA
3,647,598
(+5,013 daily increase)

TAS
646,087
(+929 daily increase)

SA
2,064,213
(+2,461 daily increase)

ACT
547,252
(+721 daily increase)

NT
208,511
(+152 daily increase)

303,050

doses administered to persons
residing in other territories or with
missing residential information

*General practice includes Commonwealth Vaccination Clinics, Aboriginal Community Health Centres, Royal Flying Doctor Service and other Commonwealth vaccination facilities

Source: Australian Immunisation Register

Data as at:
11 Apr 2022

Commonwealth aged care and disability doses administered



1,269,483 (+ 176 last 24 hours)

Total vaccine doses administered in aged care and disability facilities as at 11 April

Number of doses administered as part of the Commonwealth aged and disability care rollout

NSW
558,611
(+45 daily increase)

VIC
234,773
(+11 daily increase)

QLD
201,983
(+71 daily increase)

WA
107,121
(+25 daily increase)

TAS
22,656
(-2# daily increase)

SA
83,863
(-7# daily increase)

ACT
16,862
(+0 daily increase)

NT
7,493
(+3 daily increase)

36,121

doses administered to persons
residing in other territories or with
missing residential information

Source: Australian Immunisation Register

*Sourced from the Australian Immunisation Register. Includes all persons vaccinated at participating residential aged care, disability and related industry settings.

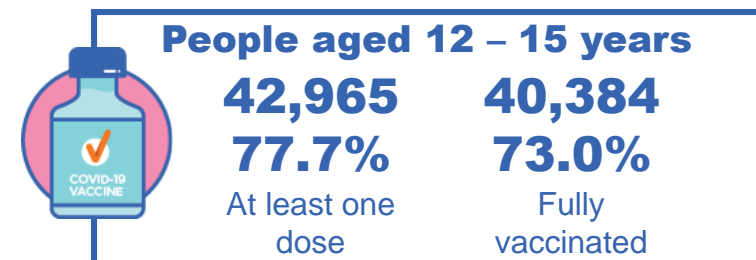
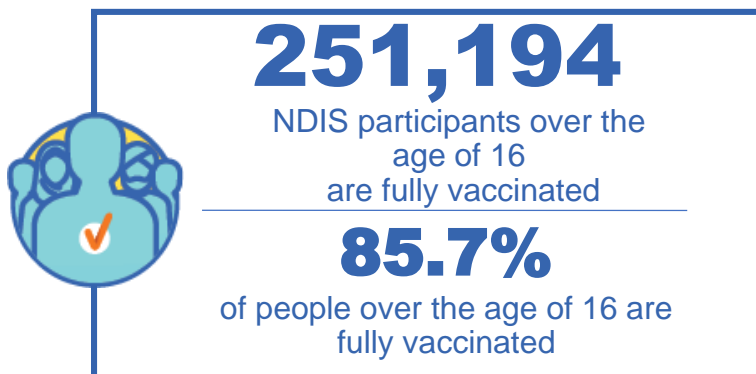
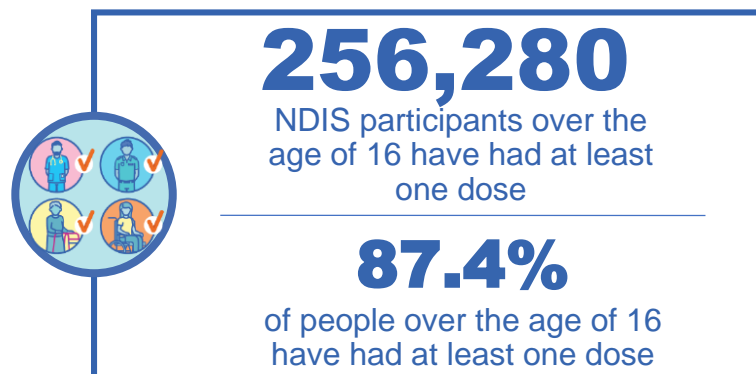
**State level breakdown indicates the residential location and may not align to the state in which the vaccination occurred.

#Numbers are calculated as difference in daily cumulative reported numbers to allow for historical corrections in all data sources. This can occasionally result in negative numbers, such as for TAS and SA, where historical details about doses have been updated.

National Disability Insurance Scheme (NDIS) reported vaccinations

Data as at:
07 April 2022
Updated weekly

Australia's COVID-19
Vaccine Roadmap



NDIS participant vaccinations

	People aged 16+ with at least one dose	People aged 16+ fully vaccinated	% People aged 16+ with at least one dose	% People aged 16+ fully vaccinated
ACT	4,851	4,785	89.5%	88.2%
NSW	78,772	77,466	87.8%	86.3%
NT	2,218	2,143	77.7%	75.1%
QLD	50,484	49,445	85.8%	84.0%
SA	20,915	20,357	85.3%	83.0%
TAS	6,423	6,260	87.4%	85.2%
VIC	68,199	66,965	88.6%	87.0%
WA	24,418	23,773	88.7%	86.4%
National	256,280	251,194	87.4%	85.7%

Source: Linkage between National Disability Insurance Agency data and the Australian Immunisation Register. Total NDIS participant numbers as at 28th February. Australian Immunisation Register data as at 6 April. Includes all participants regardless of residence type.

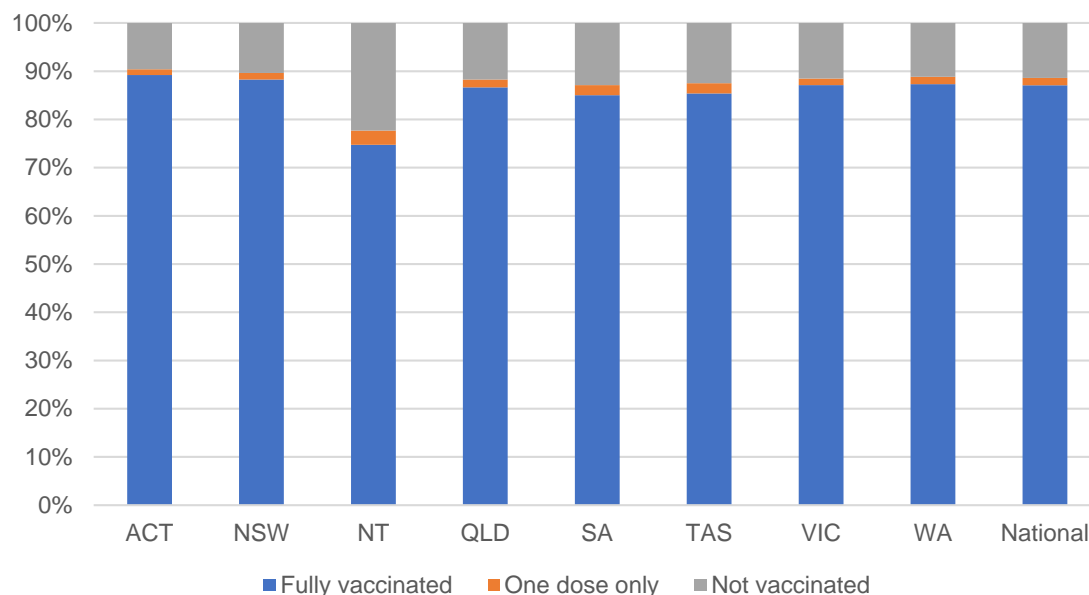
National Disability Insurance Scheme (NDIS) reported vaccinations

Data as at:
07 April 2022
Updated Weekly

Australia's COVID-19
Vaccine Roadmap

NATIONAL	Total people with at least one dose	People fully vaccinated	Total number of individuals in cohort	% People with at least one dose	% People fully vaccinated
NDIS participants living in disability accommodation	20,715	20,370	23,352	88.7%	87.2%

NDIS participants in disability and aged care accommodation



Source: Linkage between National Disability Insurance Agency data and the Australian Immunisation Register. Includes participants residing in disability accommodation only.
Source: Total NDIS participant numbers as at 28th February. Participant data as at 5 April. Australian Immunisation Register data as at 6 April. Worker data as at 7 April.

NDIS workforce vaccinations

	NDIS workers with at least one dose	NDIS workers fully vaccinated	% NDIS workers with at least one dose	% NDIS workers fully vaccinated
NSW	121,253	116,728	98.0%	94.4%
VIC	116,368	111,721	98.3%	94.4%
QLD	69,411	68,583	97.4%	96.3%
WA	32,942	31,103	98.5%	93.0%
SA	35,452	30,516	98.5%	84.7%
TAS	10,760	10,481	99.7%	97.1%
ACT	3,523	3,492	99.0%	98.2%
NT	3,431	3,271	99.4%	94.8%
TOTAL	393,140	375,895	98.2%	93.9%

Source: the NDIS Commission has established a requirement for registered NDIS providers who provide intensive disability support services to report on the vaccination status of workers they employ, or otherwise engage, to deliver NDIS-funded supports and services, and who are required to be vaccinated in accordance with in-force state and territory public health orders. The statistics reflect data reported to the NDIS Commission by registered NDIS providers and should be considered indicative and subject to change

Note: Some registered NDIS providers are yet to report on the vaccination status of their workforce. The NDIS Commission is working with those providers around reporting requirements.

Remaining workers not included include those exempt from vaccination requirements, workers whose vaccination status is not yet verified by the provider (such as workers on leave) and provider reporting anomalies.

Residential aged care vaccination rollout

Residential aged care facilities status

173,600

People fully vaccinated

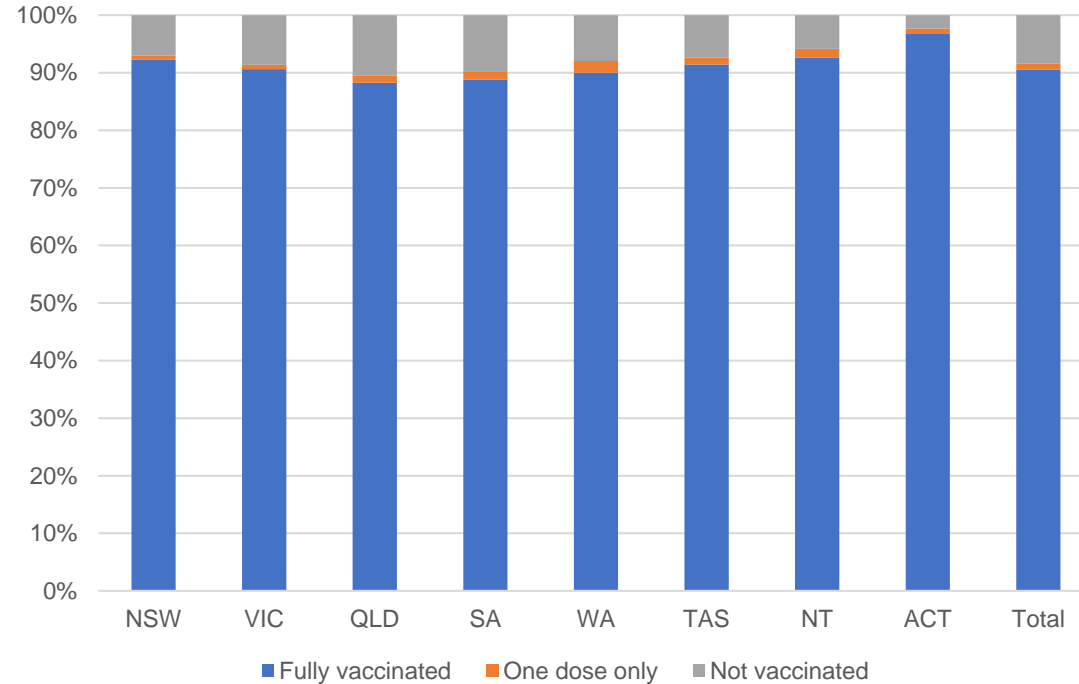
175,567

People with at least one dose

Australia's COVID-19 Vaccine Roadmap

Data as at:
07 Apr 2022
Updated weekly

Aged care resident vaccinations



Aged care worker vaccinations

Jurisdictions	Total workers with at least one dose	Workers fully vaccinated	% Workers with at least one dose	% Workers fully vaccinated
NSW	77,178	77,174	97.6%	97.6%
VIC	65,400	65,397	95.3%	95.3%
QLD	46,103	46,097	95.7%	95.6%
SA	26,282	26,266	96.8%	96.7%
WA	23,991	23,990	99.3%	99.3%
TAS	7,505	7,500	98.6%	98.5%
NT	871	871	100.0%	100.0%
ACT	2,981	2,981	100.0%	100.0%
Total	250,311	250,276	96.8%	96.8%

Source: My Aged Care Portal vaccination progress

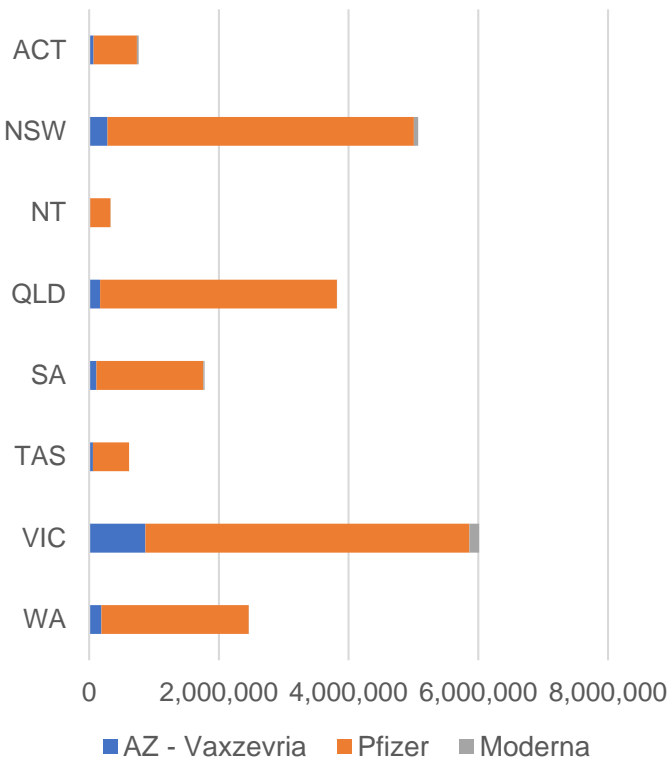
*Status updates are provided by facilities at least once per week. Reporting is updated Monday to Friday to encompass different facility updates being made on different days.

Data is sourced directly from Aged Care Service Providers and is not drawn or closely aligned with data from AIR due to inconsistencies and potential lags in uploading of records.

Data as at:
11 Apr 2022

Jurisdiction administered

Total vaccine doses administered in State and Territory clinics as at 11 April



20,870,958 total vaccine doses administered
in State and Territory clinics as at 11 April
+ **17,965** recorded in the last 24 hours
+ **76,537** recorded in the last 7 days

NSW
5,074,976
(+6,741 daily
increase)

VIC
6,018,042
(+3,821 daily
increase)

QLD
3,821,520
(+1,388 daily
increase)

WA
2,464,160
(+1,958 daily
increase)

TAS
615,425
(+1,323 daily
increase)

SA
1,782,923
(+1,017 daily
increase)

ACT
764,206
(+1,153 daily
increase)

NT
329,706
(+564 daily
increase)

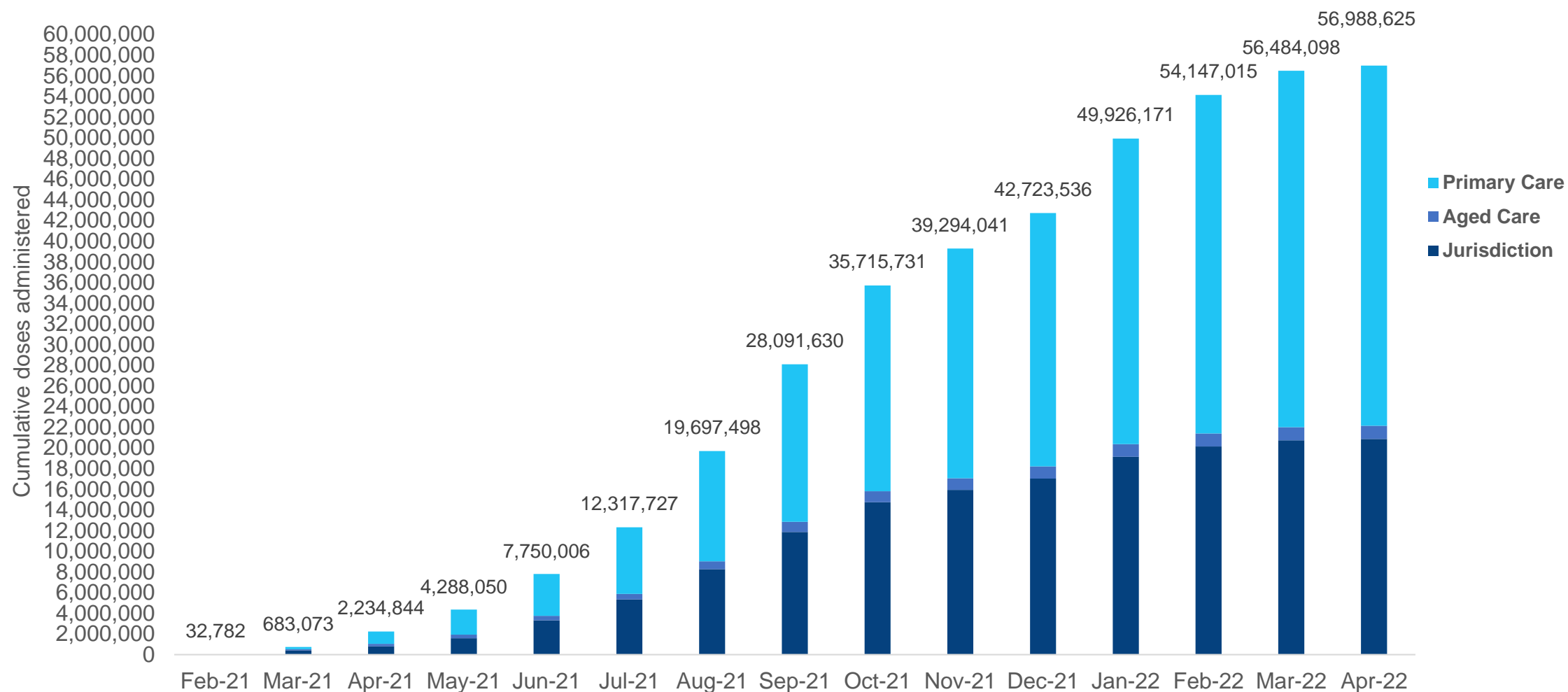
*Sourced from the Australian Immunisation Register. Numbers are calculated as difference in daily cumulative reported numbers to allow for historical corrections.

Source: Australian Immunisation Register

Cumulative doses administered by channel

Data as at:
11 Apr 2022

Australia's COVID-19
Vaccine Roadmap



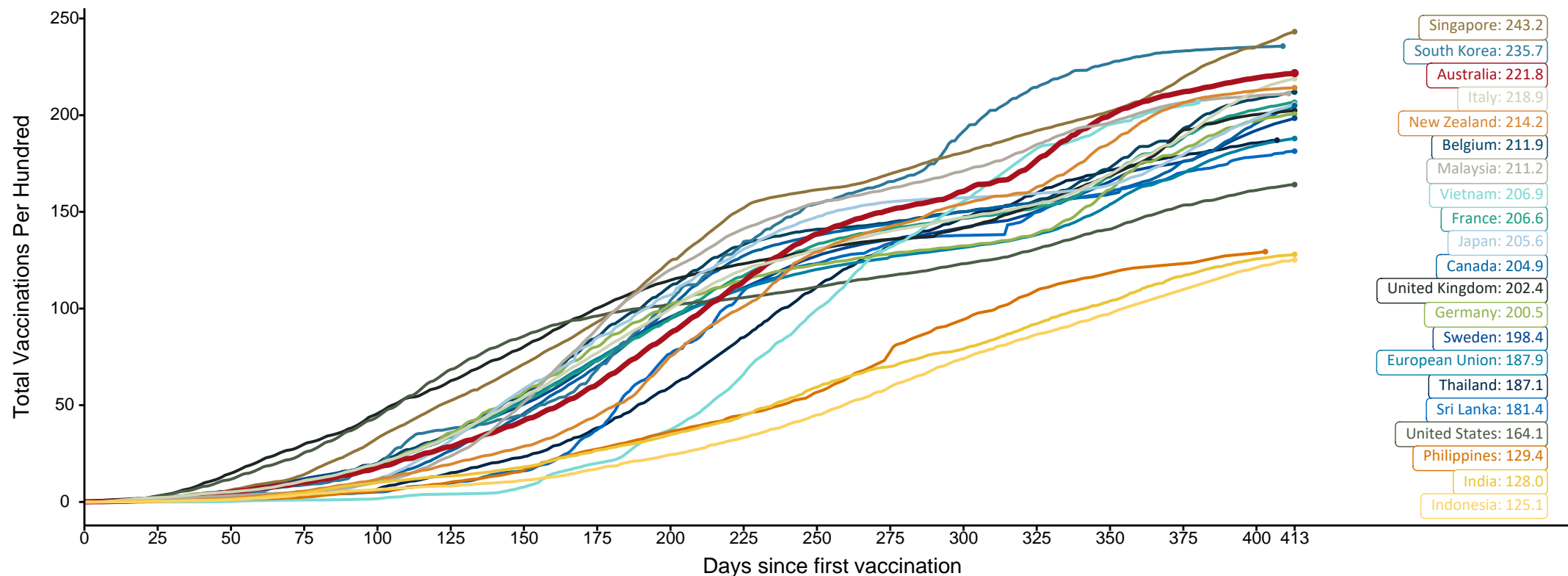
Source: Australian Immunisation Register

Doses at equivalent stages of rollout (Day 413)

Data as at:
11 Apr 2022

The x-axis is truncated at the length of Australia's vaccination program. Countries with intermittent reporting have had their doses per 100 imputed to Australia's current stage of rollout. Israel excluded as it is beyond scale of the graph

Cumulative doses administered (11 Apr): **56,988,625**



Note: From 11 January 2022, data for Australia includes all doses administered to people 5 and over. Prior to 11 January, data was for 12 and over.

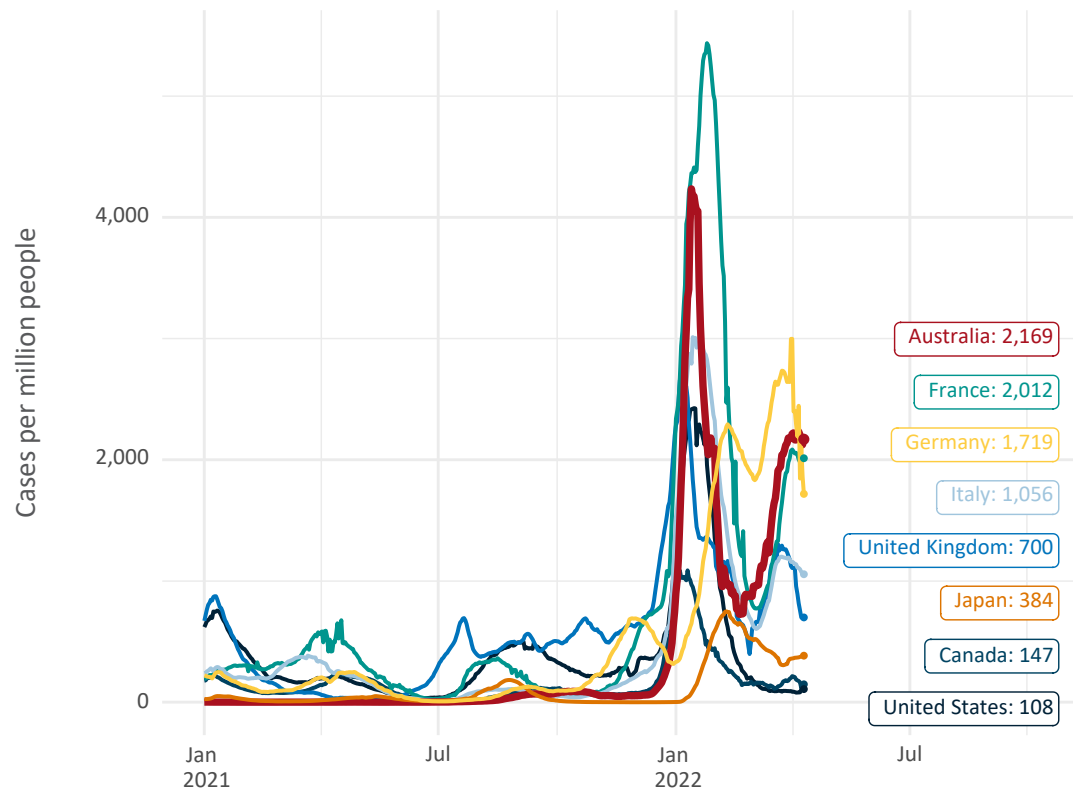
Source: Department of Health (Australia), Our World in Data (international)

Latest data: 11 April

Data as at:
11 Apr 2022

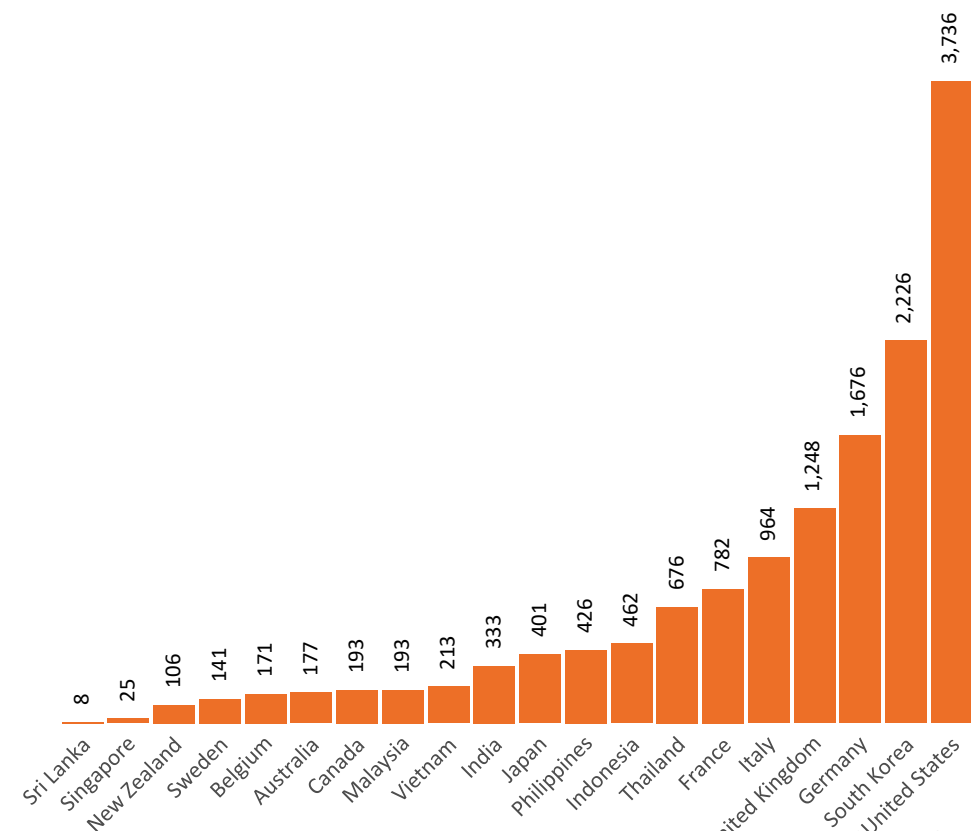
International data – COVID-19

New daily cases per million in 2021, Australia and G7 countries
Smoothed - 7 day average



Source: OWID
Data downloaded: 12 Apr 2022 08:38
Latest data: 10 Apr 2022

COVID-19 deaths in past 7 days - Australia and select countries



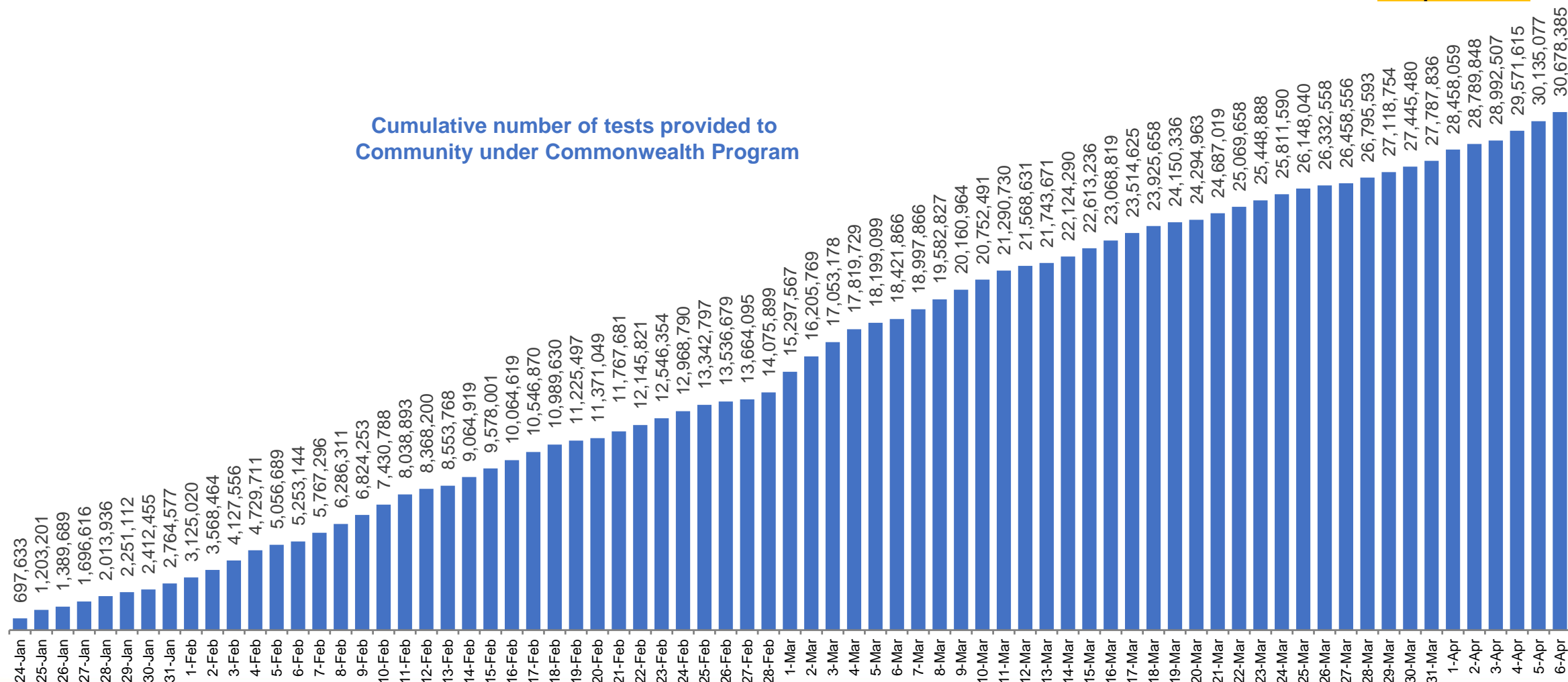
Source: OWID
Data downloaded: 12 Apr 2022 08:38
Latest data: 10 Apr 2022

Data as at
6 April 2022

Concessional rapid antigen test program

5,629 pharmacies have delivered over **30.6 million rapid antigen tests** to more than **4.4m eligible concession card holders** under the Government's concessional rapid antigen test program.

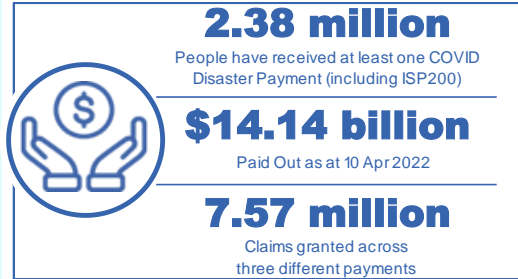
Cumulative number of tests provided to
Community under Commonwealth Program



Pandemic Response Payments

Australia's COVID-19
Vaccine Roadmap

Data as at midnight: 10 Apr 2022
Updated weekly



COVID Disaster Payment:	5.89 million claims received - 2.19 million individuals paid a total of \$12.59 billion.
\$200 Income Support Payment:	353,000 claims received - 183,000 individuals paid a total of \$268.9 million.
Pandemic Leave Disaster Payment:	1.80 million claims received - 1.12 million individuals paid a total of \$1.27 billion.



COVID Disaster Payment

assisting during a lockdown event in a Commonwealth hotspot.

Income Support Payment \$200

for income support recipients who lost at least 8 hours of work.

Pandemic Leave Disaster Payment

for those who have to self-isolate, quarantine or care.

For more information visit:
servicesaustralia.gov.au

COVID-19 DISASTER PAYMENTS

Northern Territory

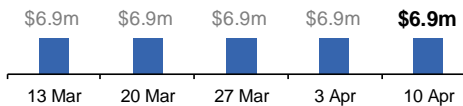
Lockdown (#3) from 16 Nov to 22 Nov
Claiming period ended 27 Dec

7,500 people have received at least one COVID Disaster Payment.

\$6.9m paid out as at 10 Apr 2022.

Nil paid in initial payments in the week ending 10 Apr 2022.

Cumulative payments made by Territory since activation on 25 Aug 2021.



Victoria

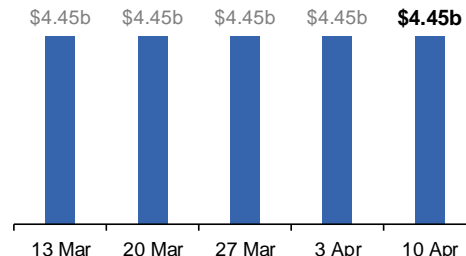
Lockdown (#6) from 6 Aug to 28 Oct
Claiming period ended 9 Dec

745,000 people have received at least one COVID Disaster Payment.

\$4.45b paid out as at 10 Apr 2022.

\$750 paid in initial and reoccurring payments in the week ending 10 Apr 2022.

Cumulative payments made by State since activation on 8 Jun 2021.



New South Wales

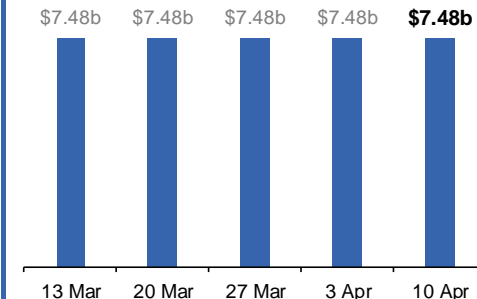
Lockdown from 24 Jun to 10 Oct
Claiming period ended 27 Nov

1.08m people have received at least one COVID Disaster Payment.

\$7.48b paid out as at 10 Apr 2022.

\$750 paid in initial and reoccurring payments in the week ending 10 Apr 2022.

Cumulative payments made by State since activation on 1 Jul 2021.



Australian Capital Territory

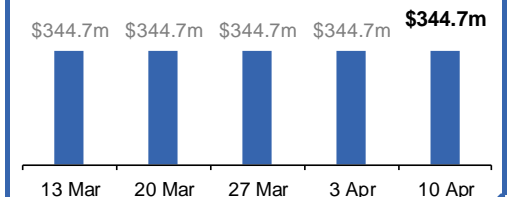
Lockdown from 12 Aug to 14 Oct
Claiming period ended 25 Nov

65,000 people have received at least one COVID Disaster Payment.

\$344.7m paid out as at 10 Apr 2022.

Nil paid in initial and reoccurring payments in the week ending 10 Apr 2022.

Cumulative payments made by Territory since activation on 20 Aug 2021.



Pandemic Response Payments (continued)

Data as at midnight: 10 Apr 2022
Updated weekly

COVID-19 DISASTER PAYMENTS

Tasmania

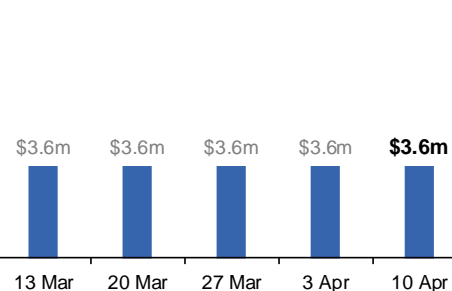
Lockdown from 15 Oct to 18 Oct
Claiming period ended 12 Nov

6,900 people have received at least one COVID Disaster Payment.

\$3.6m paid out as at 10 Apr 2022.

Nil paid in initial and reoccurring payments in the week ending 10 Apr 2022.

Cumulative payments made by State since activation on 22 Oct 2021.



Queensland

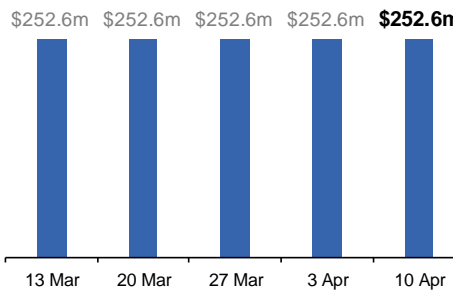
Lockdown from 31 Jul to 11 Aug
Claiming period ended 28 Aug

196,000 people have received at least one COVID Disaster Payment.

\$252.6m paid out as at 10 Apr 2022.

Nil paid in initial and reoccurring payments in the week ending 10 Apr 2022.

Cumulative payments made by State since activation on 7 Aug 2021.



South Australia

Lockdown from 21 to 27 Jul
Claiming period ended 17 Aug

86,000 people have received at least one COVID Disaster Payment.

\$48.2m paid out as at 10 Apr 2022.

Nil paid in initial and reoccurring payments in the week ending 10 Apr 2022.

Cumulative payments made by State since activation on 28 Jul 2021.

