



**Australian Government**  
**Operation COVID Shield**

# COVID-19 Vaccine Roll-out

10 April 2022

Data as at:  
09 Apr 2022

# Total vaccine doses



**56,909,074** total vaccine  
doses administered nationally as at 09 April  
**+26,116** recorded in the last 24 hours



**19,983,080**

people have had at least one  
dose

**>95%**

of people over the age of 16  
have had at least one dose



**19,644,365**

people are fully vaccinated

**>95%**

of people over the age of 16 are  
fully vaccinated



**13,128,699**

people over the age of 16  
who have received more  
than two doses

**NSW**  
**17,664,930**  
(+5,716 daily  
increase)

**VIC**  
**14,991,169**  
(+7,705 daily  
increase)

**QLD**  
**10,781,515**  
(+4,483 daily  
increase)

**WA**  
**6,234,485**  
(+4,087 daily  
increase)

**TAS**  
**1,279,775**  
(+144 daily  
increase)

**SA**  
**3,921,213**  
(+2,485 daily  
increase)

**ACT**  
**1,476,466**  
(+1,001 daily  
increase)

**NT**  
**559,521**  
(+495 daily  
increase)

\*Administration state breakdown indicates state in which a vaccine was administered

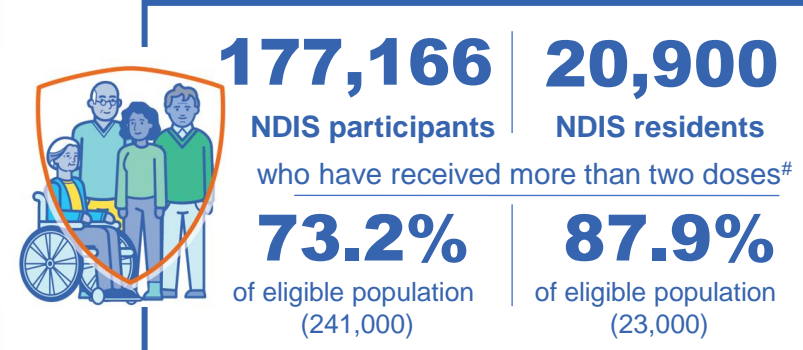
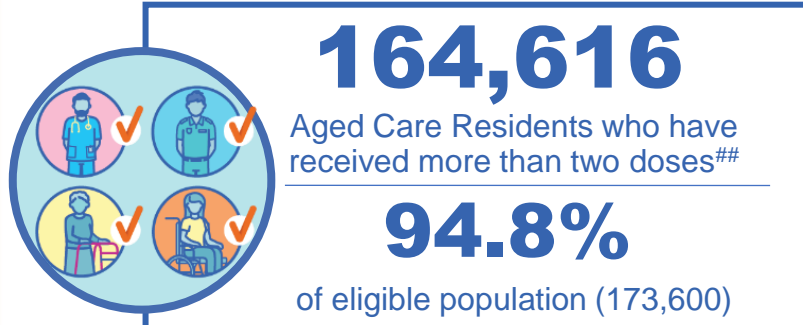
\*\*Overall dose count includes instances of more than three doses per person in a small number of cases.

Source: Australian Immunisation Register

# Booster Vaccinations

Australia's COVID-19  
Vaccine Roadmap

Data as at:  
09 Apr 2022



**13,128,699** total people who  
have received more than two doses nationally  
**+12,072** recorded in the last 24 hours  
**68.7%** of people who are eligible (19,115,442)  
have received more than two doses

NSW	People	% of Eligible
Cumulative	4,017,257	65.1%
Daily increase	3,063	

VIC	People	% of Eligible
Cumulative	3,535,061	70.4%
Daily increase	2,731	

QLD	People	% of Eligible
Cumulative	2,274,171	62.5%
Daily increase	2,219	

WA	People	% of Eligible
Cumulative	1,588,866	86.3%
Daily increase	1,807	

SA	People	% of Eligible
Cumulative	929,697	72.1%
Daily increase	1,029	

TAS	People	% of Eligible
Cumulative	298,905	71.7%
Daily increase	105	

ACT	People	% of Eligible
Cumulative	261,946	76.2%
Daily increase	250	

NT	People	% of Eligible
Cumulative	114,260	70.5%
Daily increase	259	

**108,536** doses administered to persons  
residing in other territories or with  
missing residential information

\*People may belong to multiple groups and could be represented in the above breakdowns multiple times.  
# NDIS participants data as at 5 April 2022. ## Aged Care Residents data as at 8 April 2022.

Source: Australian Immunisation Register

# Vaccinations by residential location

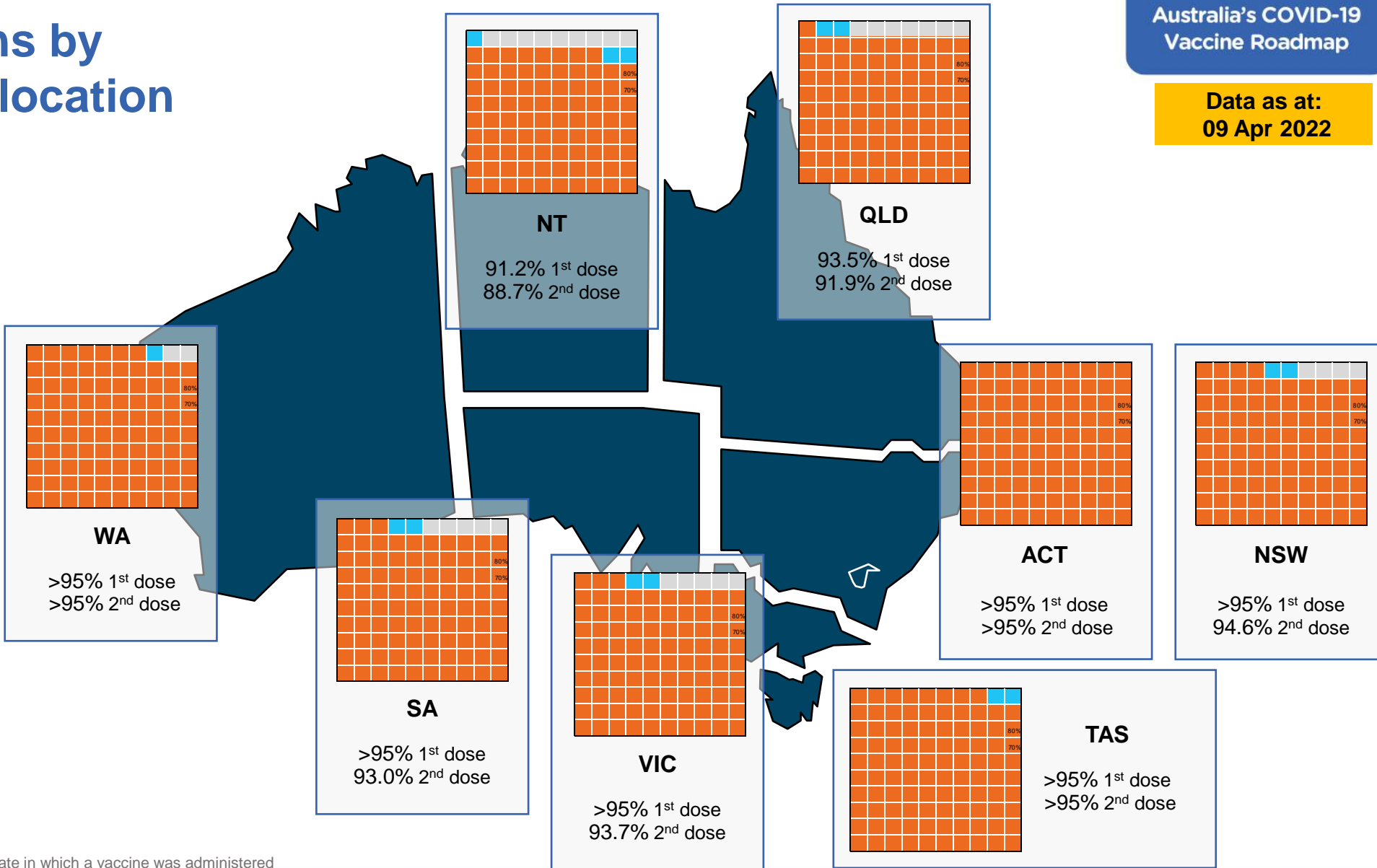
Data as at: 09 Apr 2022

## First doses

Age	Today	4 weeks ago	8 weeks ago
16+	>95%	>95%	>95%
50+	>95%	>95%	>95%
70+	>95%	>95%	>95%

## Fully vaccinated

Age	Today	4 weeks ago	8 weeks ago
16+	>95%	94.9%	94.4%
50+	>95%	>95%	>95%
70+	>95%	>95%	>95%



\*Residential state may differ from the state in which a vaccine was administered

# Commonwealth and Jurisdiction vaccine doses administered

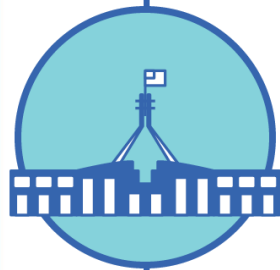
Data as at:  
09 Apr 2022



**56,909,074** total vaccine  
doses administered nationally as at 09 April  
**+ 26,116** recorded in the last 24 hours



**20,846,263**  
doses administered by state  
and territory facilities  
**+ 8,644**  
recorded in the last 24 hours



**36,062,811**  
doses administered by  
commonwealth facilities  
**+ 17,472**  
recorded in the last 24 hours

**34,793,664** total vaccine doses  
administered in primary care settings  
**1,269,147** total vaccine doses  
administered in aged care and disability  
settings

NSW	Jurisdictions	Commonwealth
Cumulative	5,068,087	12,596,843
Daily increase	83	5,633

VIC	Jurisdictions	Commonwealth
Cumulative	6,011,952	8,979,217
Daily increase	2,808	4,897

QLD	Jurisdictions	Commonwealth
Cumulative	3,819,188	6,962,327
Daily increase	1,682	2,801

WA	Jurisdictions	Commonwealth
Cumulative	2,460,754	3,773,731
Daily increase	1,455	2,632

TAS	Jurisdictions	Commonwealth
Cumulative	614,100	665,675
Daily increase	0	144

SA	Jurisdictions	Commonwealth
Cumulative	1,780,770	2,140,443
Daily increase	1,530	955

ACT	Jurisdictions	Commonwealth
Cumulative	762,491	713,975
Daily increase	612	389

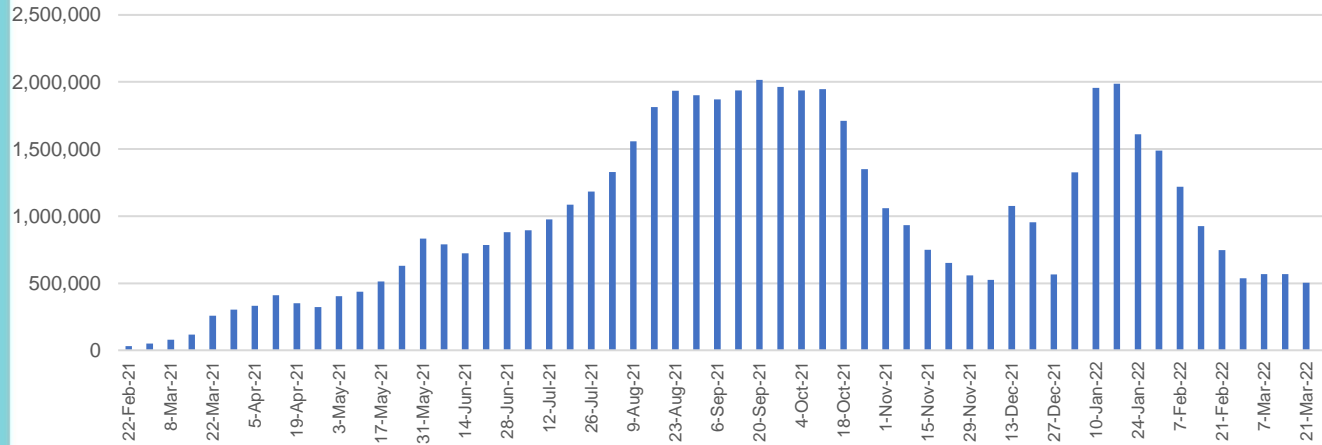
NT	Jurisdictions	Commonwealth
Cumulative	328,921	230,600
Daily increase	474	21

# Vaccine milestone charts

Data as at:  
09 Apr 2022

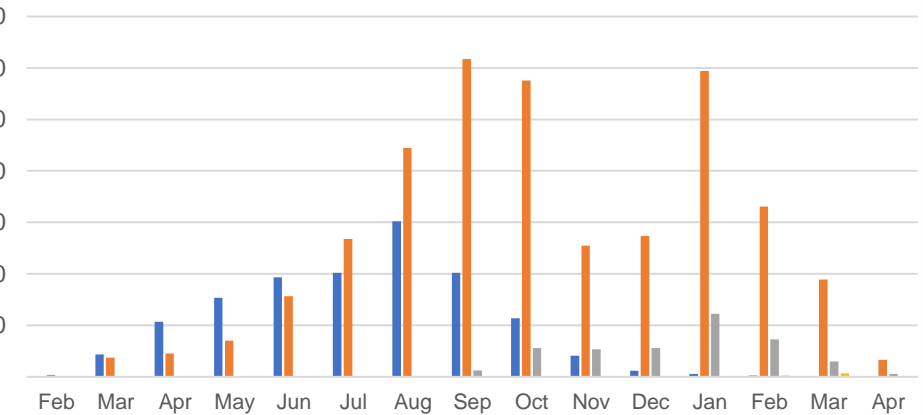
Australia's COVID-19  
Vaccine Roadmap

### Doses Administered by Week

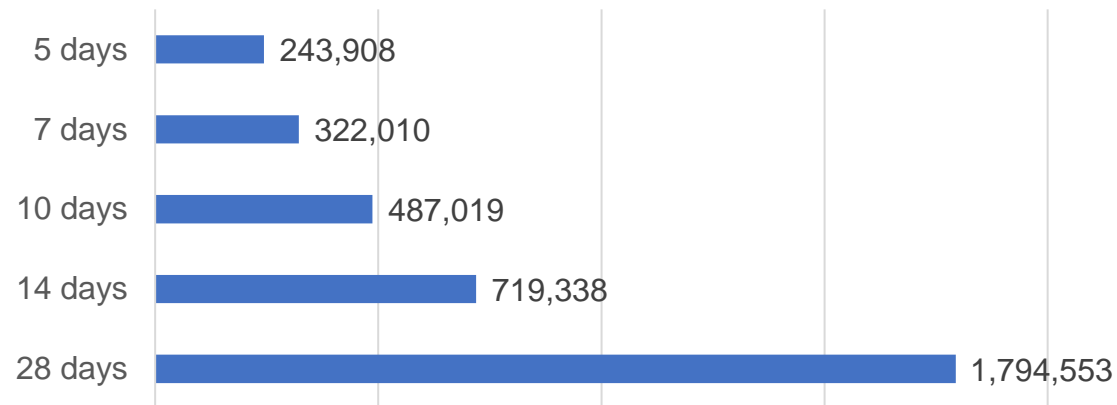


### Doses by administration month and vaccine type

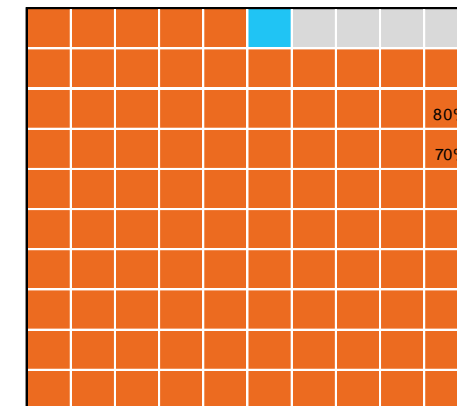
AZ - Vaxzevria Pfizer Moderna Novavax



### Doses Reported



### Eligible population percentage coverage



\*Each square represents 1% of the national population.  
Squares are filled as milestones are achieved.

\*Sourced from the Australian Immunisation Register.

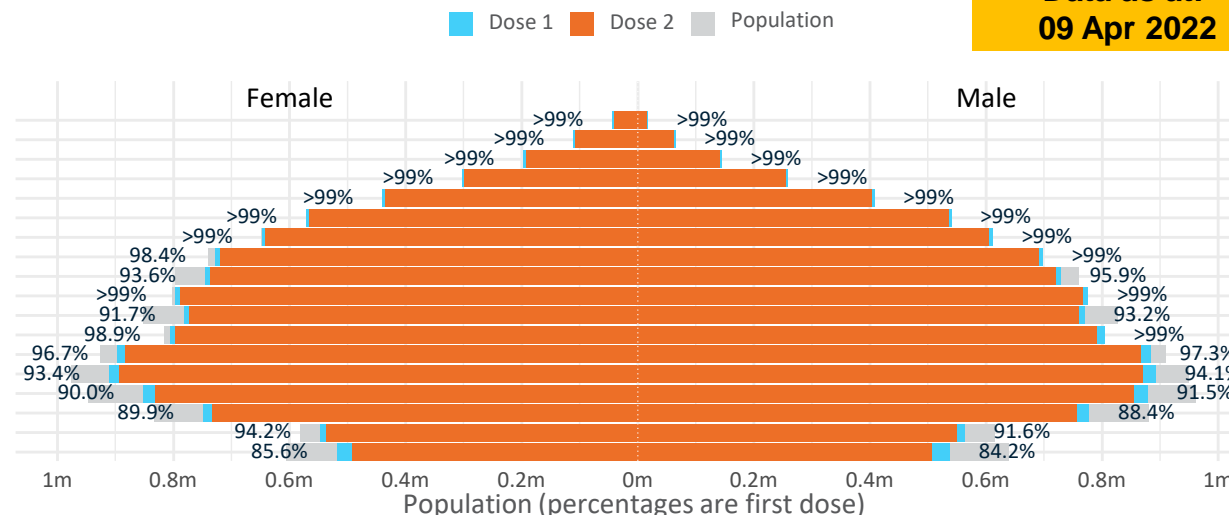
Data as at:  
09 Apr 2022

# Doses by age and sex

First and second doses by age and sex

	16+	50+	12-15	5-11
Dose 1	96.91% (19,983,080 doses / 20,619,959 people)	>99% (8,836,665 doses / 8,749,703 people)	84.92% (1,056,362 doses / 1,243,990 people)	52.60% (1,197,439 doses / 2,276,638 people)
Dose 2	95.27% (19,644,365 doses / 20,619,959 people)	>99% (8,728,455 doses / 8,749,703 people)	80.27% (998,548 doses / 1,243,990 people)	32.07% (730,030 doses / 2,276,638 people)

Age	Dose 1	Dose 2
95+	60,906 (>99%)	57,513 (>99%)
90-94	175,749 (>99%)	170,047 (>99%)
85-89	341,722 (>99%)	334,607 (>99%)
80-84	561,180 (>99%)	553,741 (>99%)
75-79	847,838 (>99%)	839,310 (>99%)
70-74	1,112,908 (>99%)	1,101,845 (>99%)
65-69	1,260,890 (>99%)	1,246,483 (>99%)
60-64	1,427,225 (>99%)	1,410,833 (98.2%)
55-59	1,475,464 (94.8%)	1,458,732 (93.8%)
50-54	1,572,783 (>99%)	1,555,344 (>99%)
45-49	1,552,121 (92.6%)	1,532,914 (91.4%)
40-44	1,613,285 (>99%)	1,588,439 (98.0%)
35-39	1,784,834 (97.3%)	1,752,105 (95.5%)
30-34	1,811,420 (94.2%)	1,769,196 (92.0%)
25-29	1,740,781 (91.3%)	1,693,210 (88.8%)
20-24	1,532,535 (89.5%)	1,493,122 (87.2%)
16-19	1,111,439 (92.9%)	1,086,924 (90.9%)
12-15	1,056,362 (84.9%)	998,548 (80.3%)



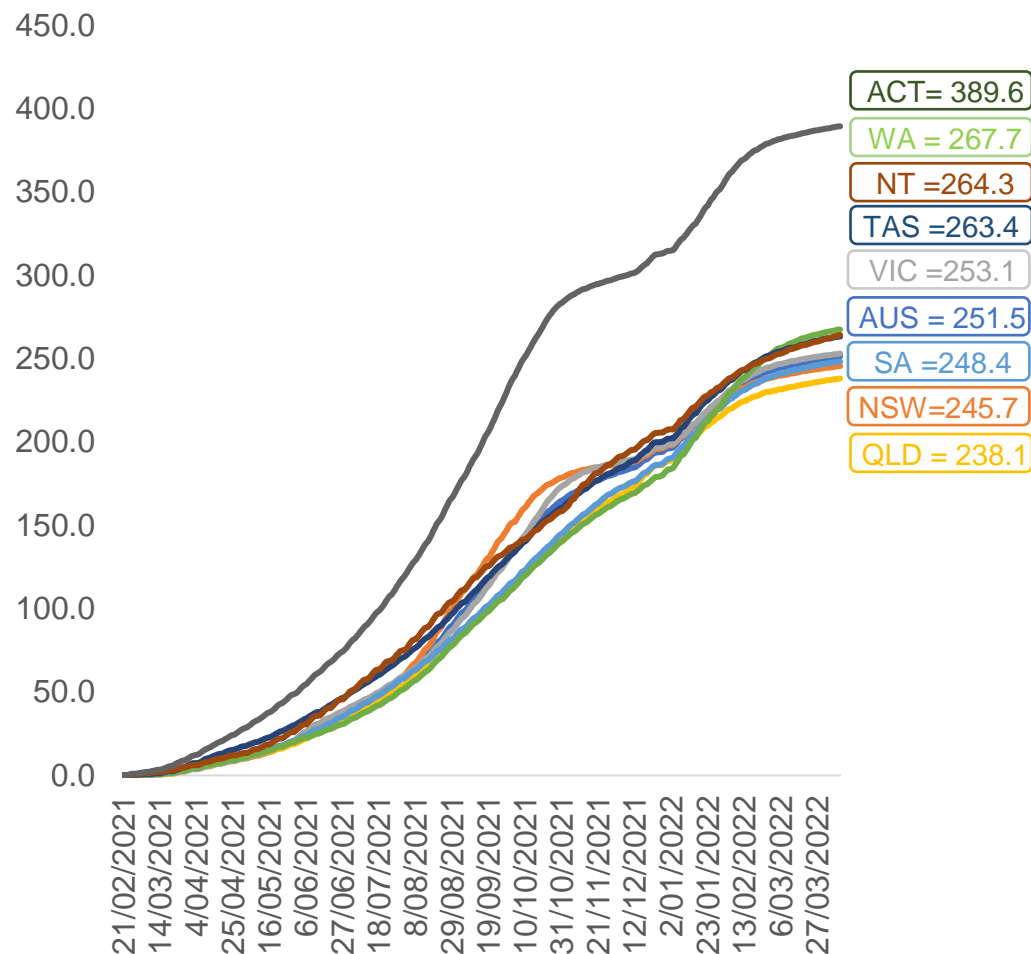
	AUS	ACT	NSW	NT	QLD	SA	TAS	VIC	WA
16 and over - dose 1	19,983,080	351,638	6,307,168	173,826	3,844,718	1,370,001	443,399	5,142,583	2,086,346
16 and over - dose 2	19,644,365	346,170	6,212,280	169,063	3,777,946	1,339,560	434,070	5,066,418	2,052,046
16 and over - population	20,619,959*	344,037	6,565,651	190,571	4,112,707	1,440,400	440,172	5,407,574	2,114,978
16 and over % with dose 1	96.91%	>99%	96.06%	91.21%	93.48%	95.11%	>99%	95.10%	98.65%
16 and over % with dose 2	95.27%	>99%	94.62%	88.71%	91.86%	93.00%	98.61%	93.69%	97.02%
5 to 11 - dose 1	1,197,439	31,902	356,324	13,194	209,290	84,226	28,789	325,710	140,164
5 to 11 - dose 2	730,030	23,832	219,631	6,986	128,561	52,911	20,943	197,650	75,899
5 to 11 - population	2,276,638	39,789	716,460	24,750	478,731	148,816	45,033	578,499	244,154
5 to 11 % with dose 1	52.60%	80.18%	49.73%	53.31%	43.72%	56.60%	63.93%	56.30%	57.41%
5 to 11 % with dose 2	32.07%	59.90%	30.66%	28.23%	26.85%	35.55%	46.51%	34.17%	31.09%
12 to 15 - dose 1	1,056,362	20,105	325,246	10,891	207,387	68,478	22,934	275,929	115,732
12 to 15 - dose 2	998,548	19,522	310,360	9,796	194,073	64,703	21,787	263,571	106,308
12 to 15 - population	1,243,990	19,693	390,330	13,060	270,146	82,747	26,308	308,611	132,869
12 to 15 % with dose 1	84.92%	>99%	83.33%	83.39%	76.77%	82.76%	87.18%	89.41%	87.10%
12 to 15 % with dose 2	80.27%	>99%	79.51%	75.01%	71.84%	78.19%	82.82%	85.41%	80.01%

\*National population will not equal sum of listed jurisdictions due to a small number of people counted in national population residing in some 'other' territories. Sum of state doses will not add to national total as some records are unable to be geocoded to a State or Territory.  
Doses sourced from Australian Immunisation Register, population from ABS ERP June 2020



# Vaccinations by location

Cumulative total doses administered vs eligible state populations\*

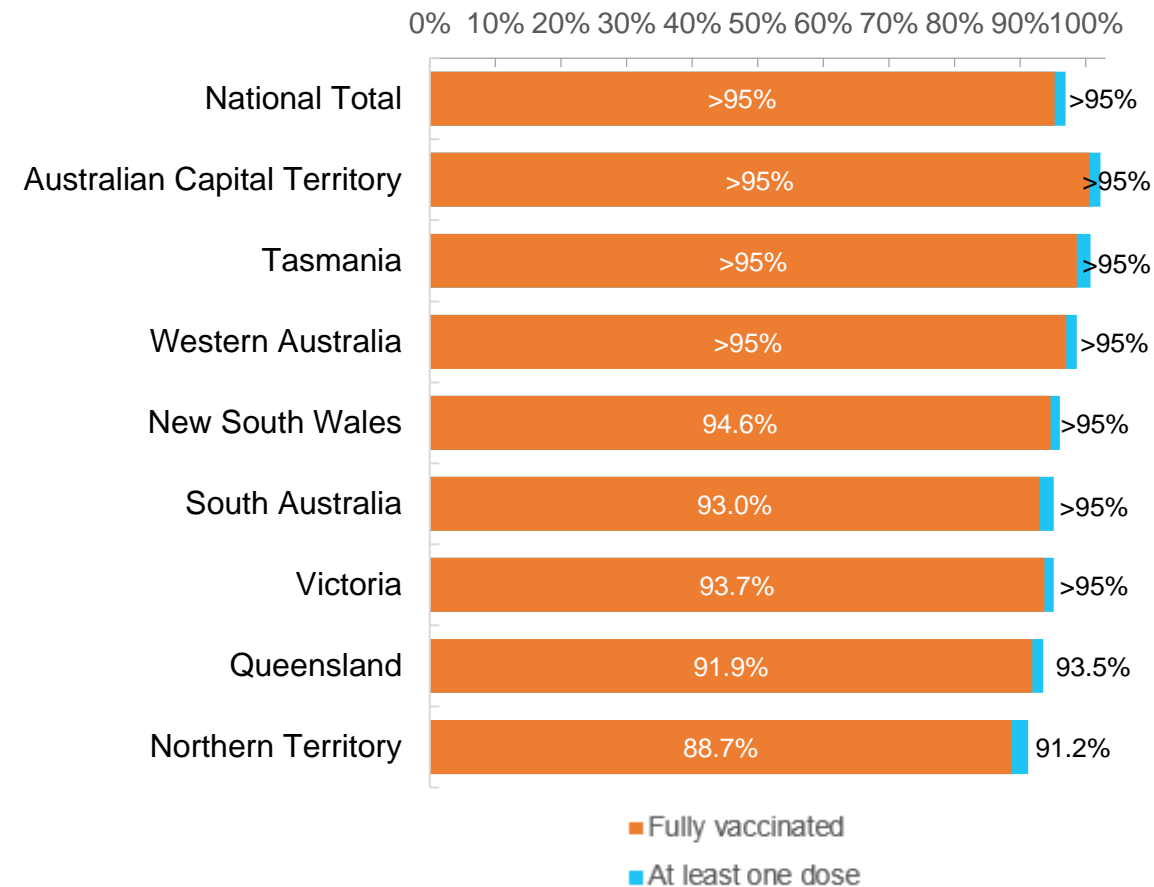


\*Not an indication of percentage vaccinated, numbers will exceed 100 due to multiple doses required per person of the population. All doses are included for those aged 12 and above, and are based on vaccination provider location.

Data as at:  
09 Apr 2022

Australia's COVID-19  
Vaccine Roadmap

First and Second Doses by residential location





# Aboriginal and Torres Strait Islander peoples

## Number of people vaccinated

Data as at:  
05 Apr 2022  
Updated weekly

Australia's COVID-19  
Vaccine Roadmap



**436,589**

people over the age of 16  
have had at least one dose

**84.3%**

of people over the age of 16  
have had at least one dose



**415,873**

people over the age of 16  
are fully vaccinated

**80.3%**

of people over the age of 16 are  
fully vaccinated



People aged 12 – 15 years

**48,654**

**42,576**

**68.5%**

At least one dose

**59.9%**

Fully vaccinated

### 178 Aboriginal community controlled health services (ACCHS)

0#

50

27

44

12

3

21

21

**ACT**

**NSW**

**NT**

**QLD**

**SA**

**TAS**

**VIC**

**WA**

Medicare Address State <sup>##</sup>	Individuals Dose 1	Individuals Dose 1 %	Individuals Dose 2	Individuals Dose 2 %
Australian Capital Territory	4,812	91.1%	4,691	88.8%
New South Wales	134,182	86.6%	131,000	84.6%
Northern Territory	42,007	89.4%	39,676	84.5%
Queensland	115,056	81.3%	109,175	77.1%
South Australia	19,747	79.7%	18,252	73.7%
Tasmania	13,790	88.3%	13,366	85.6%
Victoria	35,216	89.7%	34,393	87.6%
Western Australia	53,460	85.7%	48,749	78.1%
Unknown/Other Territories	18,319	66.9%	16,571	60.6%
<b>Totals</b>	<b>436,589</b>	<b>84.3%</b>	<b>415,873</b>	<b>80.3%</b>

Source: Australian Immunisation Register

\*Identifying as Aboriginal and Torres Strait Islander is optional and the estimated population may be under reported.

\*\*Includes all Aboriginal and Torres Strait Islander peoples who have received a vaccination, not limited to those administered in an ACCHS setting

#ACCHS in the ACT are currently operating as a Commonwealth Vaccine Clinics so not included to avoid double counting

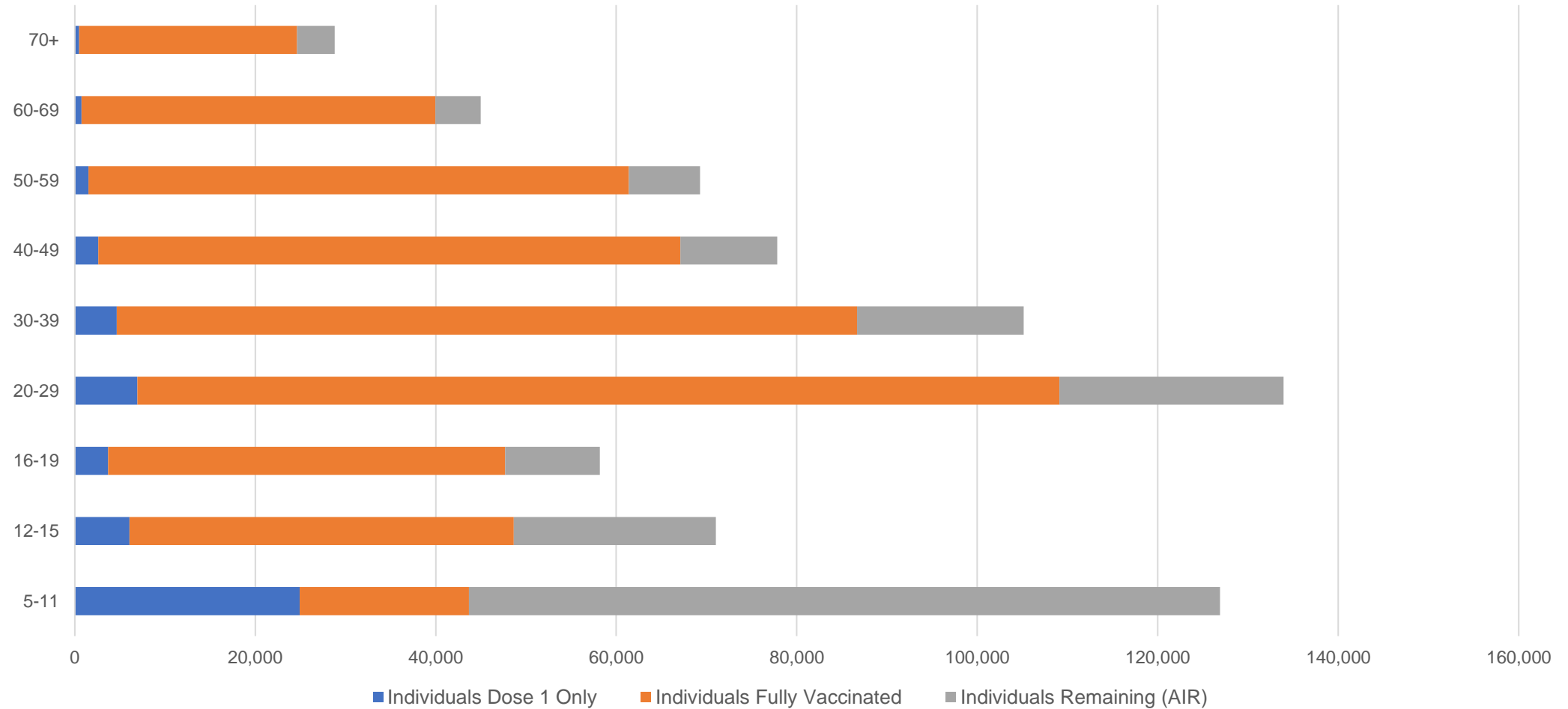
##The above table includes all identified Aboriginal and Torres Strait Islander people who are aged 16 and above by their state of residence.

# Aboriginal and Torres Strait Islander peoples

## Number of people vaccinated by age

Data as at:  
05 Apr 2022  
Updated weekly

Australia's COVID-19  
Vaccine Roadmap



Source: Australian Immunisation Register

# Commonwealth primary care

Data as at:  
09 Apr 2022

Australia's COVID-19  
Vaccine Roadmap



## Primary care vaccine administration sites

<b>5,790</b>	<b>128</b>	<b>178</b>	<b>3,594</b>
GPs	CVCs	ACCHS	Pharmacies



**34,793,664** total vaccine doses administered  
primary care settings as at 09 April  
**+ 17,337** recorded in the last 24 hours

## Primary care vaccinations by provider type

	Doses administered	Daily increase	7 day increase
General Practice* includes other Commonwealth	28,082,537	10,746	156,263
Pharmacy	6,711,127	6,591	88,725

**NSW**  
**12,041,286**  
(+5,354 daily increase)

**VIC**  
**8,665,059**  
(+4,357 daily increase)

**QLD**  
**6,683,539**  
(+2,083 daily increase)

**WA**  
**3,641,962**  
(+2,279 daily increase)

**TAS**  
**645,167**  
(+114 daily increase)

**SA**  
**2,061,394**  
(+754 daily increase)

**ACT**  
**546,459**  
(+322 daily increase)

**NT**  
**208,411**  
(-109<sup>#</sup> daily increase)

**300,387**

doses administered to persons  
residing in other territories or with  
missing residential information

\*General practice includes Commonwealth Vaccination Clinics, Aboriginal Community Health Centres, Royal Flying Doctor Service and other Commonwealth vaccination facilities.

<sup>#</sup>Numbers are calculated as difference in daily cumulative reported numbers to allow for historical corrections in all data sources. This can occasionally result in negative numbers, such as for NT, where historical details about doses have been updated.

Source: Australian Immunisation Register

Data as at:  
09 Apr 2022

# Commonwealth aged care and disability doses administered



**1,269,147** (+ 135 last 24 hours)

Total vaccine doses administered in aged care and disability facilities as at 09 April

Number of doses administered as part of the Commonwealth aged and disability care rollout

**NSW**  
**558,604**  
(-1# daily increase)

**VIC**  
**234,767**  
(-19# daily increase)

**QLD**  
**201,855**  
(+58 daily increase)

**WA**  
**107,077**  
(-6# daily increase)

**TAS**  
**22,660**  
(+0 daily increase)

**SA**  
**83,861**  
(-8# daily increase)

**ACT**  
**16,842**  
(+40 daily increase)

**NT**  
**7,489**  
(-2# daily increase)

**35,992**

doses administered to persons residing in other territories or with missing residential information

\*Sourced from the Australian Immunisation Register. Includes all persons vaccinated at participating residential aged care, disability and related industry settings.

\*\*State level breakdown indicates the residential location and may not align to the state in which the vaccination occurred.

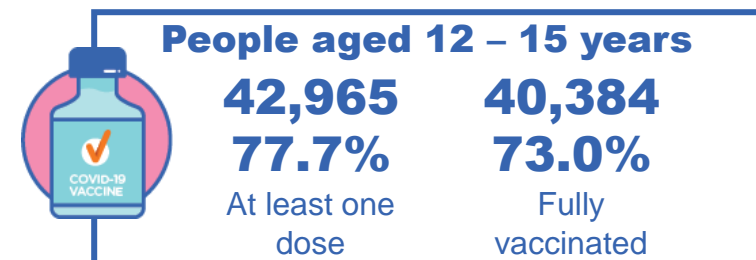
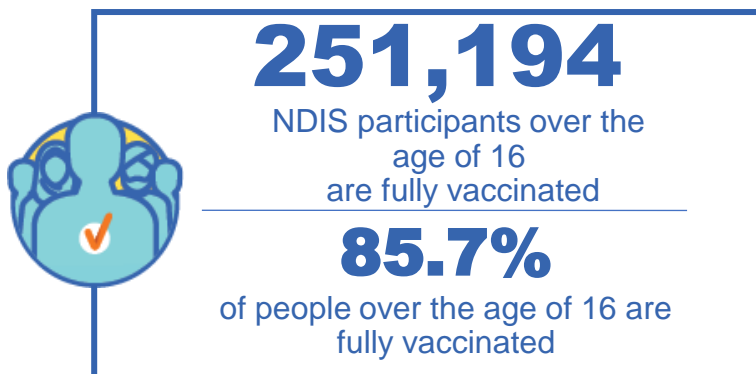
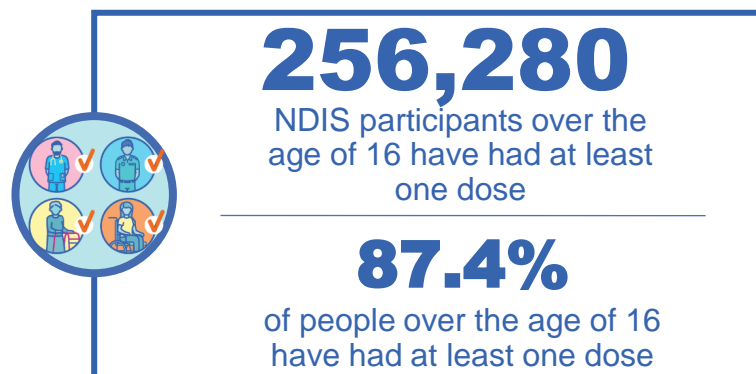
#Numbers are calculated as difference in daily cumulative reported numbers to allow for historical corrections in all data sources. This can occasionally result in negative numbers, such as for NSW, VIC, WA, SA and NT, where historical details about doses have been updated.

Source: Australian Immunisation Register

# National Disability Insurance Scheme (NDIS) reported vaccinations

Data as at:  
07 April 2022  
Updated weekly

Australia's COVID-19  
Vaccine Roadmap



## NDIS participant vaccinations

	People aged 16+ with at least one dose	People aged 16+ fully vaccinated	% People aged 16+ with at least one dose	% People aged 16+ fully vaccinated
ACT	4,851	4,785	89.5%	88.2%
NSW	78,772	77,466	87.8%	86.3%
NT	2,218	2,143	77.7%	75.1%
QLD	50,484	49,445	85.8%	84.0%
SA	20,915	20,357	85.3%	83.0%
TAS	6,423	6,260	87.4%	85.2%
VIC	68,199	66,965	88.6%	87.0%
WA	24,418	23,773	88.7%	86.4%
National	256,280	251,194	87.4%	85.7%

Source: Linkage between National Disability Insurance Agency data and the Australian Immunisation Register. Total NDIS participant numbers as at 28th February. Australian Immunisation Register data as at 6 April. Includes all participants regardless of residence type.

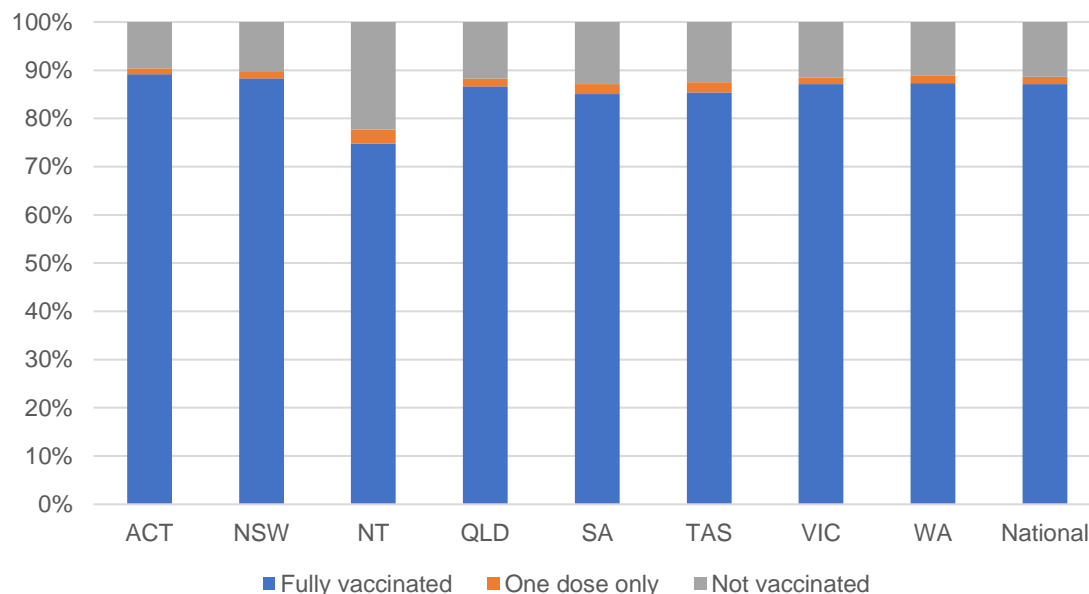
# National Disability Insurance Scheme (NDIS) reported vaccinations

Data as at:  
07 April 2022  
Updated Weekly

Australia's COVID-19  
Vaccine Roadmap

NATIONAL	Total people with at least one dose	People fully vaccinated	Total number of individuals in cohort	% People with at least one dose	% People fully vaccinated
NDIS participants living in disability accommodation	20,715	20,370	23,352	88.7%	87.2%

## NDIS participants in disability and aged care accommodation



Source: Linkage between National Disability Insurance Agency data and the Australian Immunisation Register. Includes participants residing in disability accommodation only.  
Source: Total NDIS participant numbers as at 28th February. Participant data as at 5 April. Australian Immunisation Register data as at 6 April. Worker data as at 7 April.

## NDIS workforce vaccinations

	NDIS workers with at least one dose	NDIS workers fully vaccinated	% NDIS workers with at least one dose	% NDIS workers fully vaccinated
NSW	121,253	116,728	98.0%	94.4%
VIC	116,368	111,721	98.3%	94.4%
QLD	69,411	68,583	97.4%	96.3%
WA	32,942	31,103	98.5%	93.0%
SA	35,452	30,516	98.5%	84.7%
TAS	10,760	10,481	99.7%	97.1%
ACT	3,523	3,492	99.0%	98.2%
NT	3,431	3,271	99.4%	94.8%
<b>TOTAL</b>	<b>393,140</b>	<b>375,895</b>	<b>98.2%</b>	<b>93.9%</b>

Source: the NDIS Commission has established a requirement for registered NDIS providers who provide intensive disability support services to report on the vaccination status of workers they employ, or otherwise engage, to deliver NDIS-funded supports and services, and who are required to be vaccinated in accordance with in-force state and territory public health orders. The statistics reflect data reported to the NDIS Commission by registered NDIS providers and should be considered indicative and subject to change

Note: Some registered NDIS providers are yet to report on the vaccination status of their workforce. The NDIS Commission is working with those providers around reporting requirements.

Remaining workers not included include those exempt from vaccination requirements, workers whose vaccination status is not yet verified by the provider (such as workers on leave) and provider reporting anomalies.

# Residential aged care vaccination rollout

Residential aged care facilities status

**173,600**

People fully vaccinated

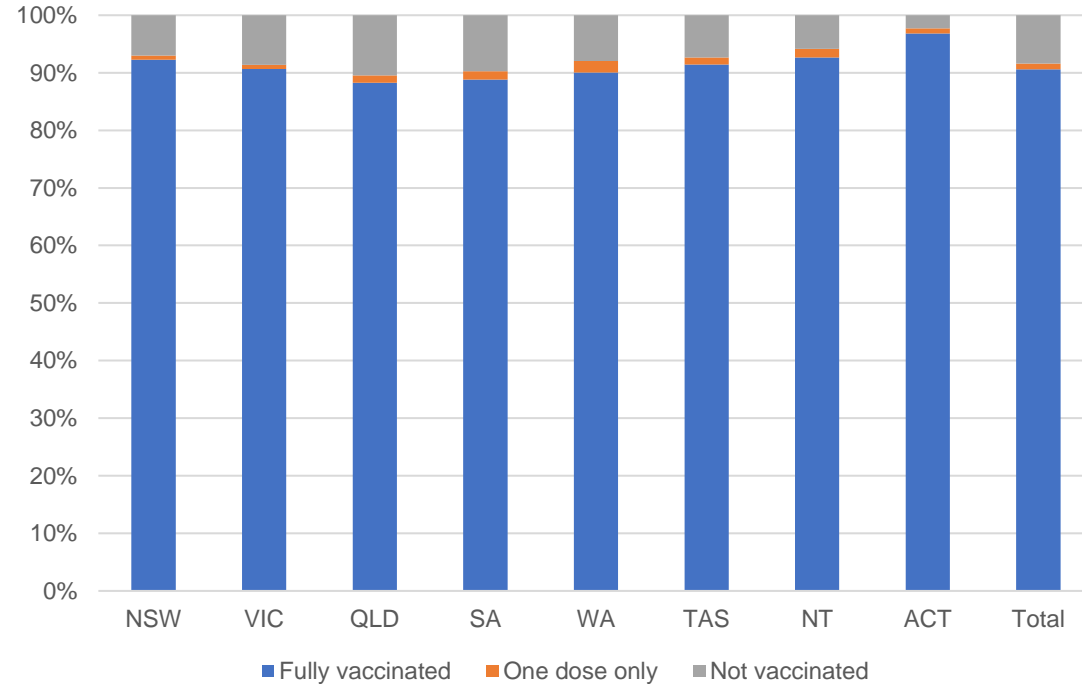
**175,567**

People with at least one dose

Australia's COVID-19 Vaccine Roadmap

Data as at:  
07 Apr 2022  
Updated weekly

## Aged care resident vaccinations



## Aged care worker vaccinations

Jurisdictions	Total workers with at least one dose	Workers fully vaccinated	% Workers with at least one dose	% Workers fully vaccinated
NSW	77,178	77,174	97.6%	97.6%
VIC	65,400	65,397	95.3%	95.3%
QLD	46,103	46,097	95.7%	95.6%
SA	26,282	26,266	96.8%	96.7%
WA	23,991	23,990	99.3%	99.3%
TAS	7,505	7,500	98.6%	98.5%
NT	871	871	100.0%	100.0%
ACT	2,981	2,981	100.0%	100.0%
Total	250,311	250,276	96.8%	96.8%

Source: My Aged Care Portal vaccination progress

\*Status updates are provided by facilities at least once per week. Reporting is updated Monday to Friday to encompass different facility updates being made on different days.

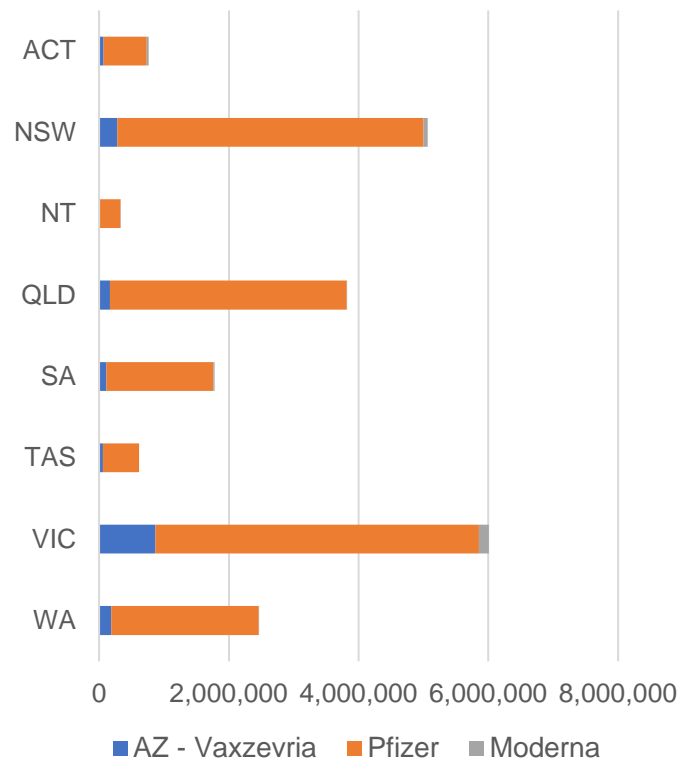
Data is sourced directly from Aged Care Service Providers and is not drawn or closely aligned with data from AIR due to inconsistencies and potential lags in uploading of records.



Data as at:  
09 Apr 2022

## Jurisdiction administered

Total vaccine doses administered in State and Territory clinics as at 09 April



**20,846,263** total vaccine doses administered  
in State and Territory clinics as at 09 April  
+ **8,644** recorded in the last 24 hours  
+ **75,397** recorded in the last 7 days

**NSW**  
**5,068,087**  
(+83 daily increase)

**VIC**  
**6,011,952**  
(+2,808 daily increase)

**QLD**  
**3,819,188**  
(+1,682 daily increase)

**WA**  
**2,460,754**  
(+1,455 daily increase)

**TAS**  
**614,100**  
(+0 daily increase)

**SA**  
**1,780,770**  
(+1,530 daily increase)

**ACT**  
**762,491**  
(+612 daily increase)

**NT**  
**328,921**  
(+474 daily increase)

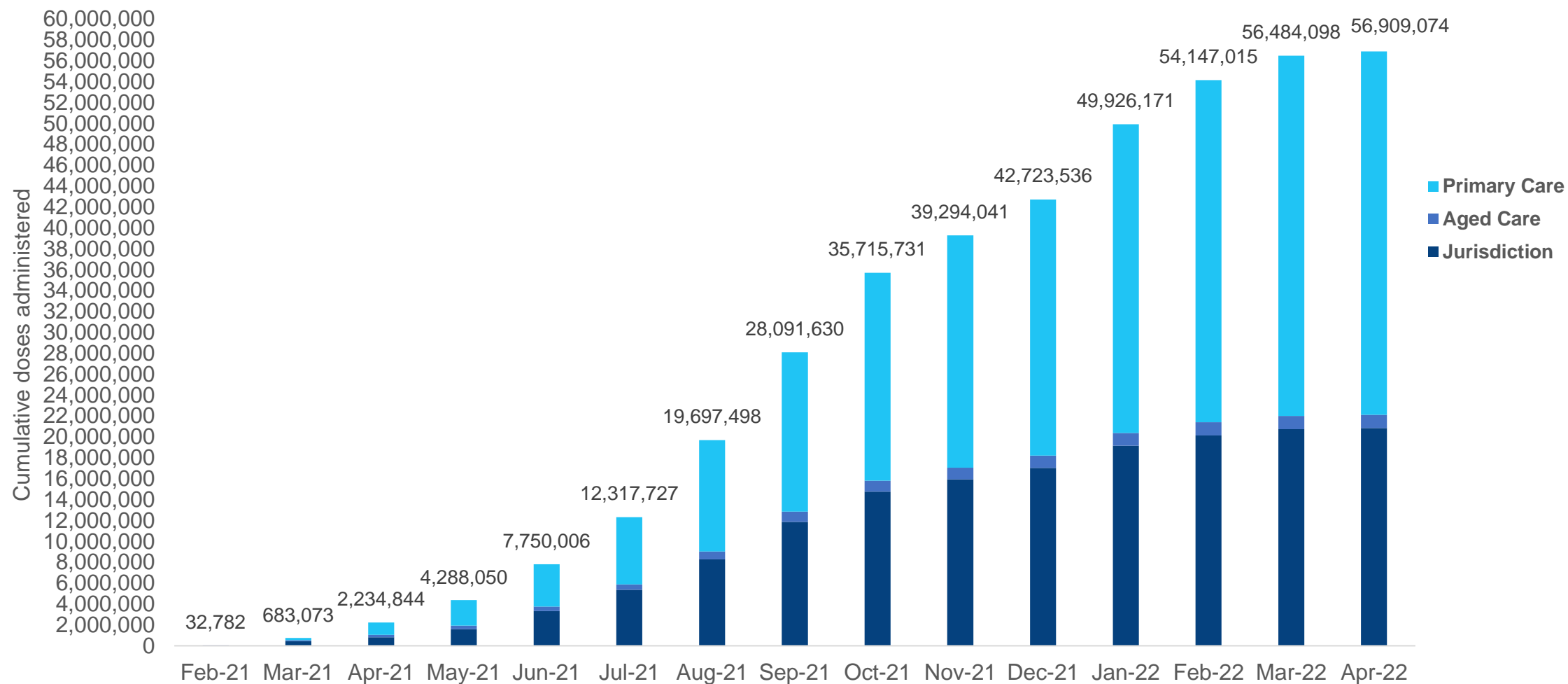
\*Sourced from the Australian Immunisation Register. Numbers are calculated as difference in daily cumulative reported numbers to allow for historical corrections.

Source: Australian Immunisation Register

# Cumulative doses administered by channel

Data as at:  
09 Apr 2022

Australia's COVID-19  
Vaccine Roadmap



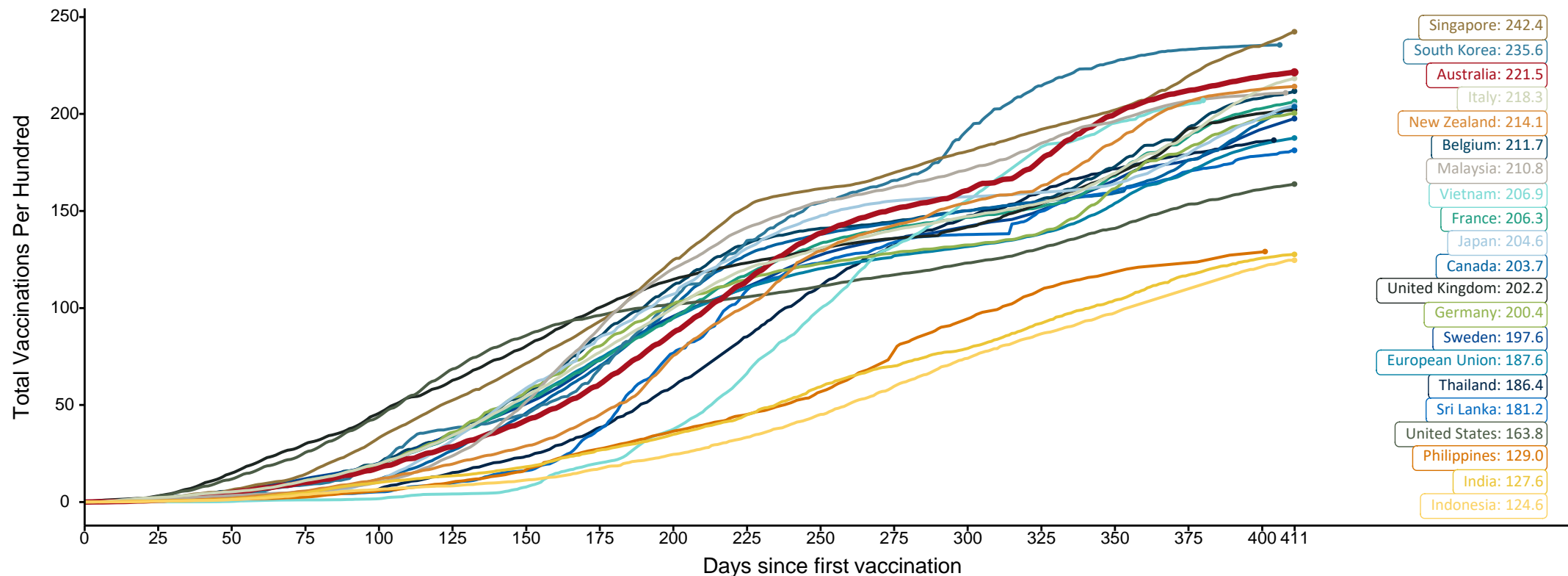
Source: Australian Immunisation Register

# Doses at equivalent stages of rollout (Day 411)

Data as at:  
09 Apr 2022

The x-axis is truncated at the length of Australia's vaccination program. Countries with intermittent reporting have had their doses per 100 imputed to Australia's current stage of rollout. Israel excluded as it is beyond scale of the graph

Cumulative doses administered (09 Apr): **56,909,074**

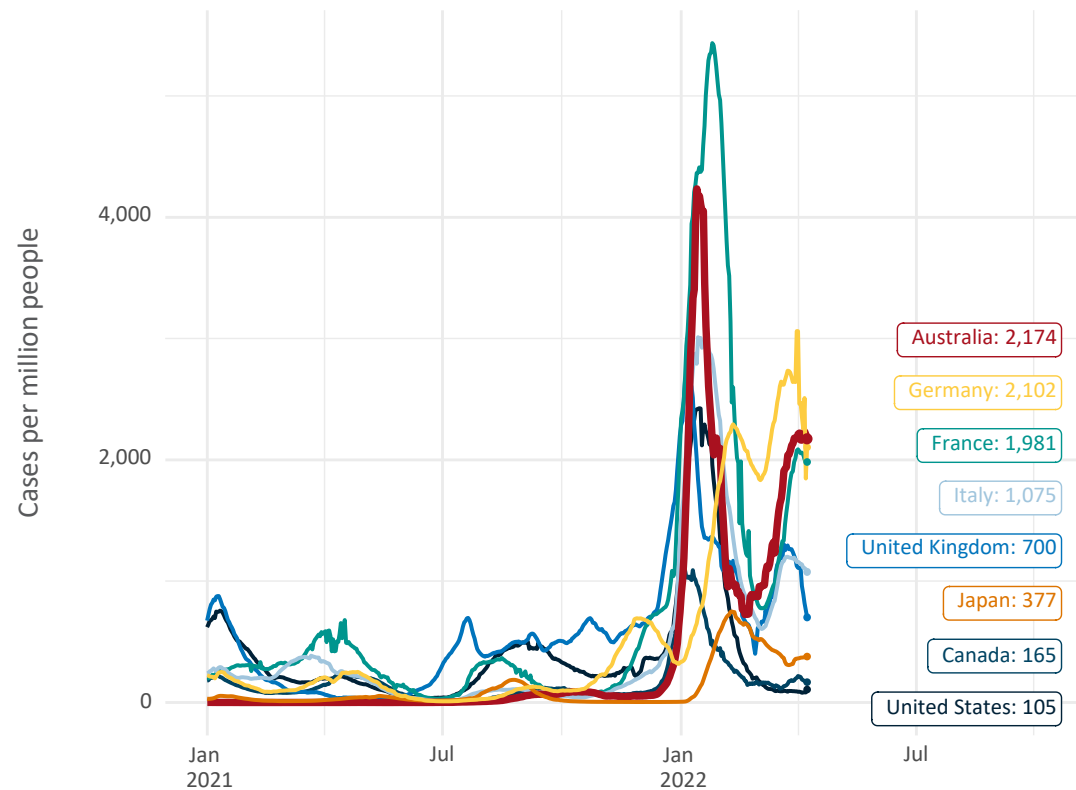


Note: From 11 January 2022, data for Australia includes all doses administered to people 5 and over. Prior to 11 January, data was for 12 and over.  
Source: Department of Health (Australia), Our World in Data (international)  
Latest data: 09 April

Data as at:  
09 Apr 2022

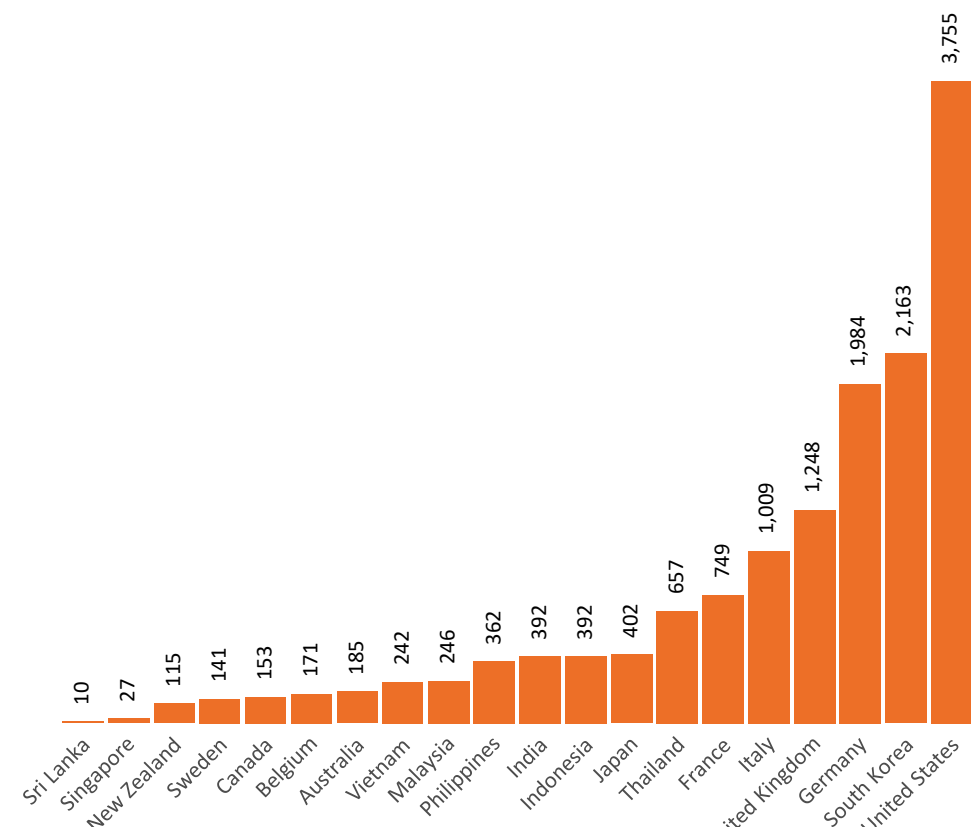
# International data – COVID-19

New daily cases per million in 2021, Australia and G7 countries  
Smoothed - 7 day average



Source: OWID  
Data downloaded: 10 Apr 2022 07:50  
Latest data: 08 Apr 2022

COVID-19 deaths in past 7 days - Australia and select countries



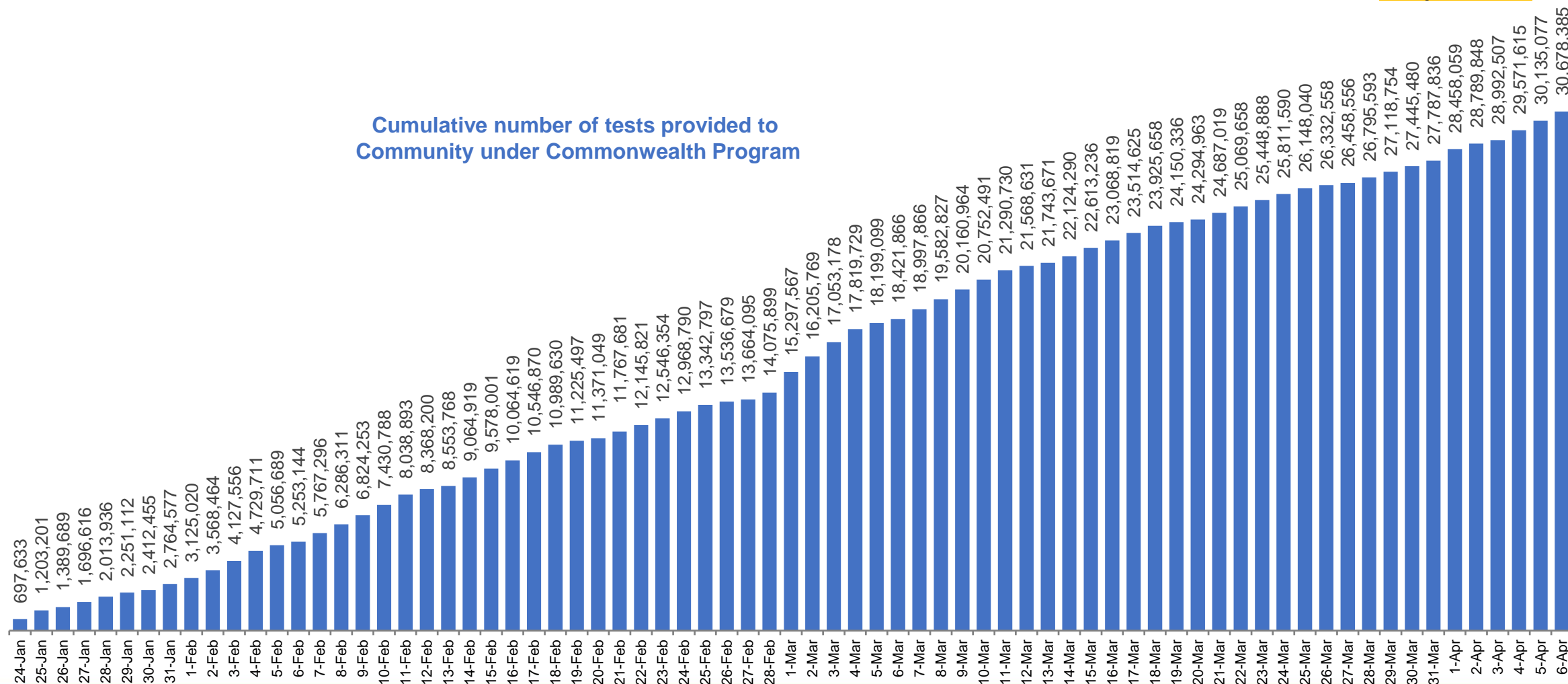
Source: OWID  
Data downloaded: 10 Apr 2022 07:50  
Latest data: 08 Apr 2022

# Concessional rapid antigen test program

**5,629 pharmacies** have delivered over **30.6 million rapid antigen tests** to more than **4.4m eligible concession card holders** under the Government's concessional rapid antigen test program.

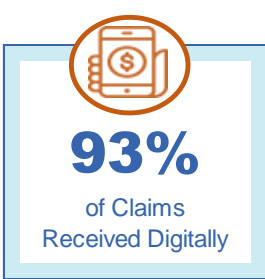
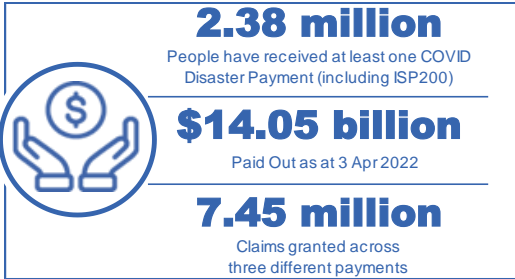
**Data as at  
6 April 2022**

Cumulative number of tests provided to  
Community under Commonwealth Program



# Pandemic Response Payments

Data as at midnight: 3 Apr 2022  
Updated weekly



<b>COVID Disaster Payment:</b>	5.89 million claims received - 2.19 million individuals paid a total of \$12.59 billion.
<b>\$200 Income Support Payment:</b>	353,000 claims received - 183,000 individuals paid a total of \$268.9 million.
<b>Pandemic Leave Disaster Payment:</b>	1.73 million claims received - 1,052,000 individuals paid a total of \$1.19 billion.

## COVID-19 DISASTER PAYMENTS

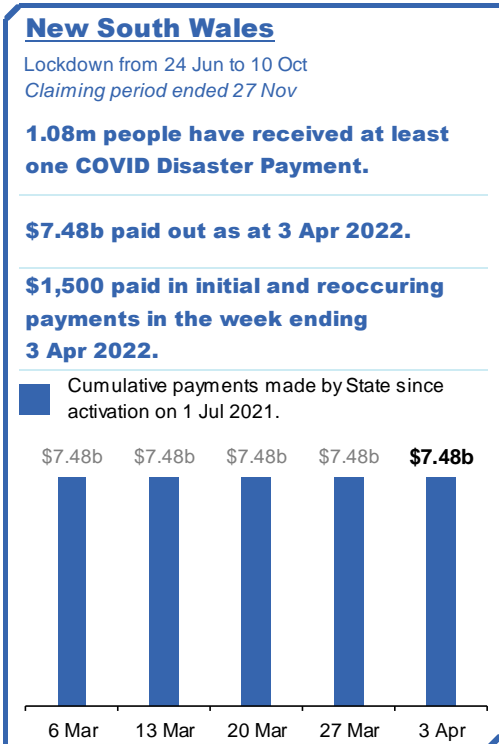
**THREE PAYMENTS AVAILABLE**

**COVID Disaster Payment**  
assisting during a lockdown event in a Commonwealth hotspot.

**Income Support Payment \$200**  
for income support recipients who lost at least 8 hours of work.

**Pandemic Leave Disaster Payment**  
for those who have to self-isolate, quarantine or care.

For more information visit:  
[servicesaustralia.gov.au](https://servicesaustralia.gov.au)



# Pandemic Response Payments (continued)

Data as at midnight: 3 Apr 2022  
Updated weekly

## COVID-19 DISASTER PAYMENTS

