



**Australian Government**  
**Operation COVID Shield**

# COVID-19 Vaccine Roll-out

01 April 2022

Data as at:  
31 Mar 2022

# Total vaccine doses



**56,484,098** total vaccine doses administered nationally as at 31 March

**+62,043** recorded in the last 24 hours



**19,962,723**

people have had at least one dose

**>95%**

of people over the age of 16 have had at least one dose



**19,618,907**

people are fully vaccinated

**>95%**

of people over the age of 16 are fully vaccinated



**12,911,947**

people over the age of 16 who have received more than two doses

**NSW**  
**17,543,146**  
(+18,136 daily increase)

**VIC**  
**14,893,021**  
(+13,696 daily increase)

**QLD**  
**10,701,175**  
(+12,419 daily increase)

**WA**  
**6,174,757**  
(+9,009 daily increase)

**TAS**  
**1,269,529**  
(+1,197 daily increase)

**SA**  
**3,890,232**  
(+4,704 daily increase)

**ACT**  
**1,459,401**  
(+1,878 daily increase)

**NT**  
**552,837**  
(+1,004 daily increase)

\*Administration state breakdown indicates state in which a vaccine was administered

\*\*Overall dose count includes instances of more than three doses per person in a small number of cases.

Source: Australian Immunisation Register

# Booster Vaccinations

Data as at:  
31 Mar 2022



**191,068**  
Indigenous people who have received more than two doses  
**51.7%**  
of eligible population (369,383)



**163,646**  
Aged Care Residents who have received more than two doses##  
**94.0%**  
of eligible population (174,161)



**174,239** NDIS participants | **20,653** NDIS residents  
who have received more than two doses#  
**72.6%** of eligible population (240,000) | **87.2%** of eligible population (23,000)



**12,911,947** total people who have received more than two doses nationally  
**+34,912** recorded in the last 24 hours  
**68.0%** of people who are eligible (18,993,599) have received more than two doses

NSW	People	% of Eligible
Cumulative	3,951,224	64.1%
Daily increase	10,354	

VIC	People	% of Eligible
Cumulative	3,491,372	69.5%
Daily increase	6,955	

QLD	People	% of Eligible
Cumulative	2,234,026	62.1%
Daily increase	7,263	

WA	People	% of Eligible
Cumulative	1,557,645	86.2%
Daily increase	5,030	

SA	People	% of Eligible
Cumulative	914,024	71.6%
Daily increase	2,517	

TAS	People	% of Eligible
Cumulative	293,251	71.1%
Daily increase	827	

ACT	People	% of Eligible
Cumulative	258,836	75.3%
Daily increase	378	

NT	People	% of Eligible
Cumulative	110,373	68.6%
Daily increase	562	

**101,196** doses administered to persons residing in other territories or with missing residential information

\*People may belong to multiple groups and could be represented in the above breakdowns multiple times.  
# NDIS participants data as at 29 March 2022. ## Aged Care Residents data as at 31 March 2022.

Source: Australian Immunisation Register

Data as at:  
31 Mar 2022

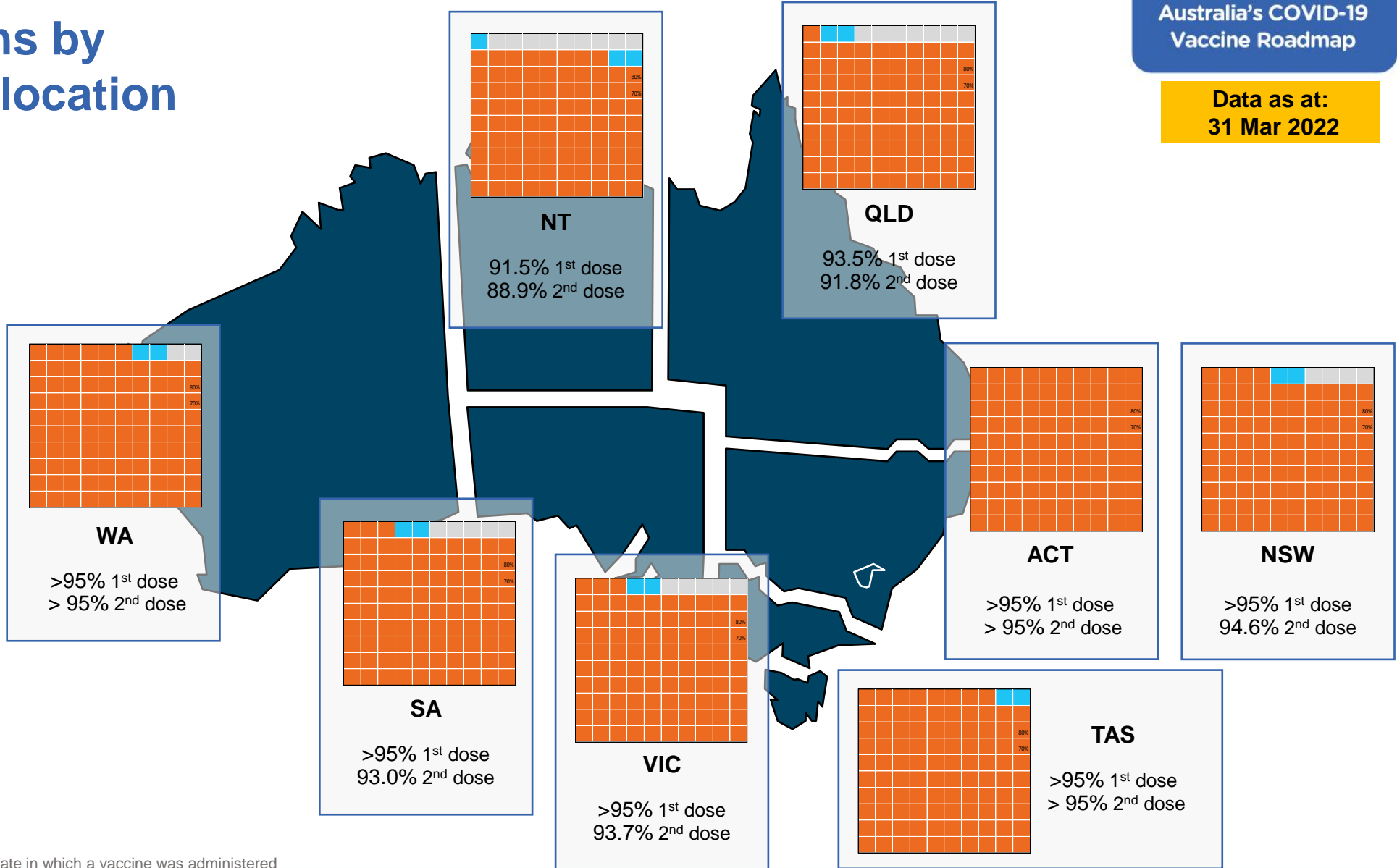
# Vaccinations by residential location

## First doses

Age	Today	4 weeks ago	8 weeks ago
16+	>95%	>95%	>95%
50+	>95%	>95%	>95%
70+	>95%	>95%	>95%

## Fully vaccinated

Age	Today	4 weeks ago	8 weeks ago
16+	>95%	94.7%	94.0%
50+	>95%	>95%	>95%
70+	>95%	>95%	>95%



\*Residential state may differ from the state in which a vaccine was administered

# Commonwealth and Jurisdiction vaccine doses administered

Data as at:  
31 Mar 2022



**56,484,098** total vaccine doses administered nationally as at 31 March

+ **62,043** recorded in the last 24 hours



**20,738,094**

doses administered by state and territory facilities

+ **14,376**

recorded in the last 24 hours

NSW	Jurisdictions	Commonwealth
Cumulative	5,052,081	12,491,065
Daily increase	3,770	14,366

TAS	Jurisdictions	Commonwealth
Cumulative	610,732	658,797
Daily increase	8	1,189

VIC	Jurisdictions	Commonwealth
Cumulative	5,985,379	8,907,642
Daily increase	2,586	11,110

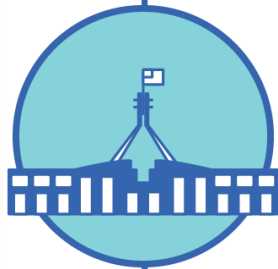
SA	Jurisdictions	Commonwealth
Cumulative	1,768,039	2,122,193
Daily increase	1,672	3,032

QLD	Jurisdictions	Commonwealth
Cumulative	3,800,925	6,900,250
Daily increase	2,109	10,310

ACT	Jurisdictions	Commonwealth
Cumulative	752,869	706,532
Daily increase	1,256	622

WA	Jurisdictions	Commonwealth
Cumulative	2,443,429	3,731,328
Daily increase	2,368	6,641

NT	Jurisdictions	Commonwealth
Cumulative	324,640	228,197
Daily increase	607	397



**35,746,004**

doses administered by commonwealth facilities

+ **47,667**

recorded in the last 24 hours

**34,479,037** total vaccine doses administered in primary care settings

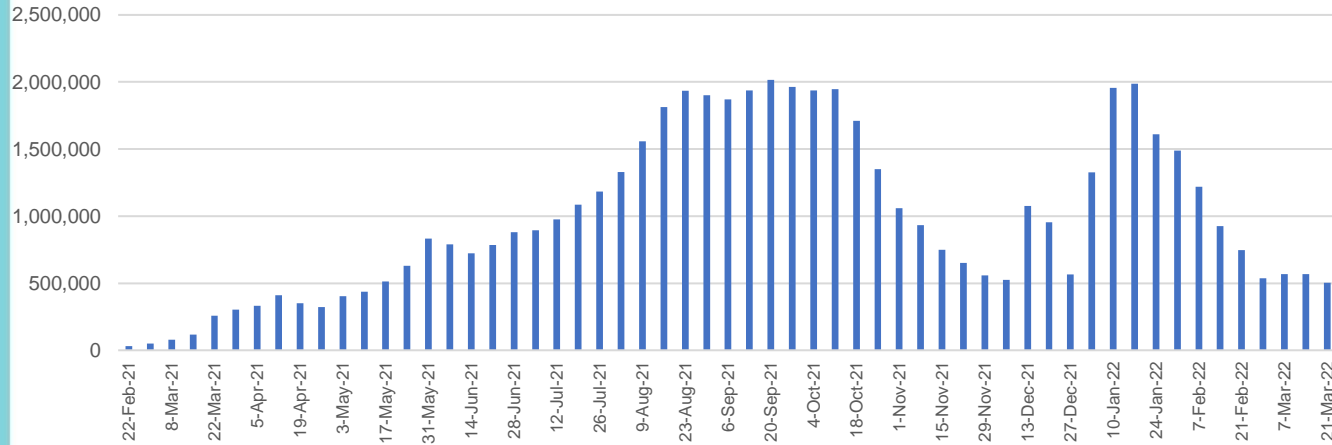
**1,266,967** total vaccine doses administered in aged care and disability settings

# Vaccine milestone charts

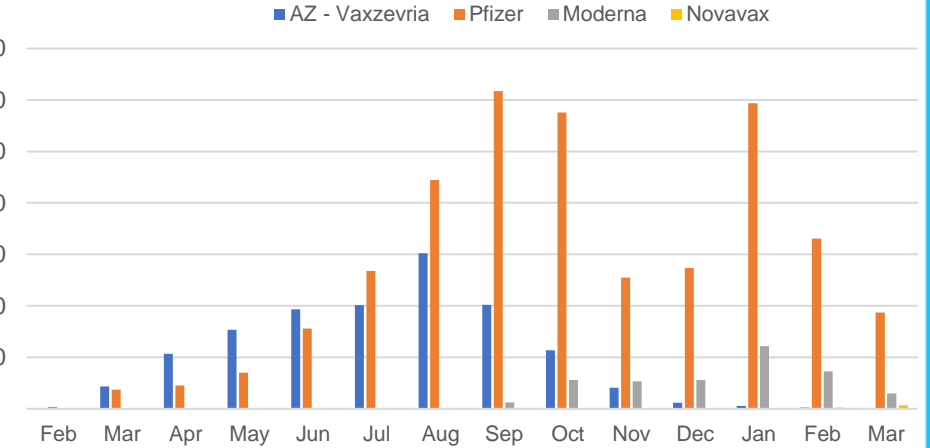
Data as at:  
31 Mar 2022

Australia's COVID-19  
Vaccine Roadmap

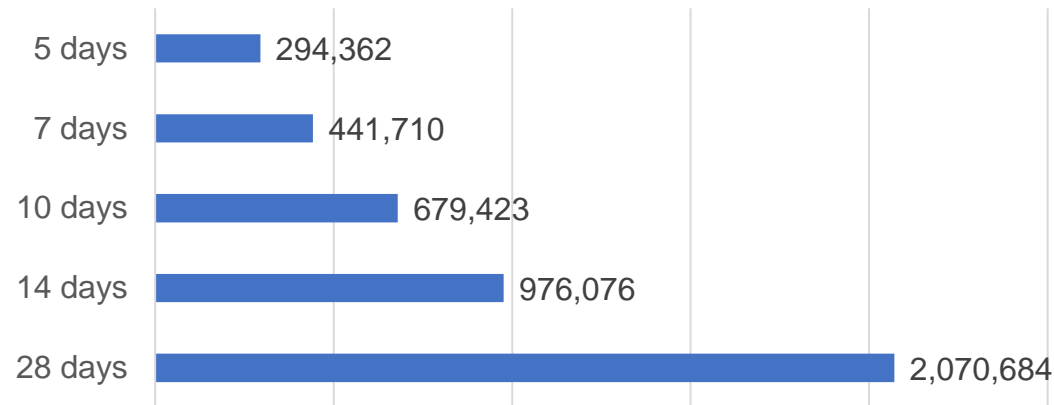
Doses Administered by Week



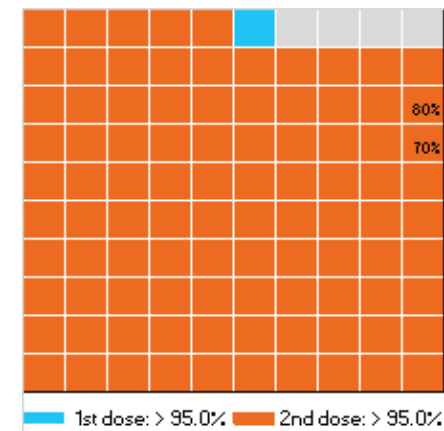
Doses by administration month and vaccine type



Doses Reported



Eligible population percentage coverage



\*Sourced from the Australian Immunisation Register.

\*Each square represents 1% of the national population. Squares are filled as milestones are achieved.

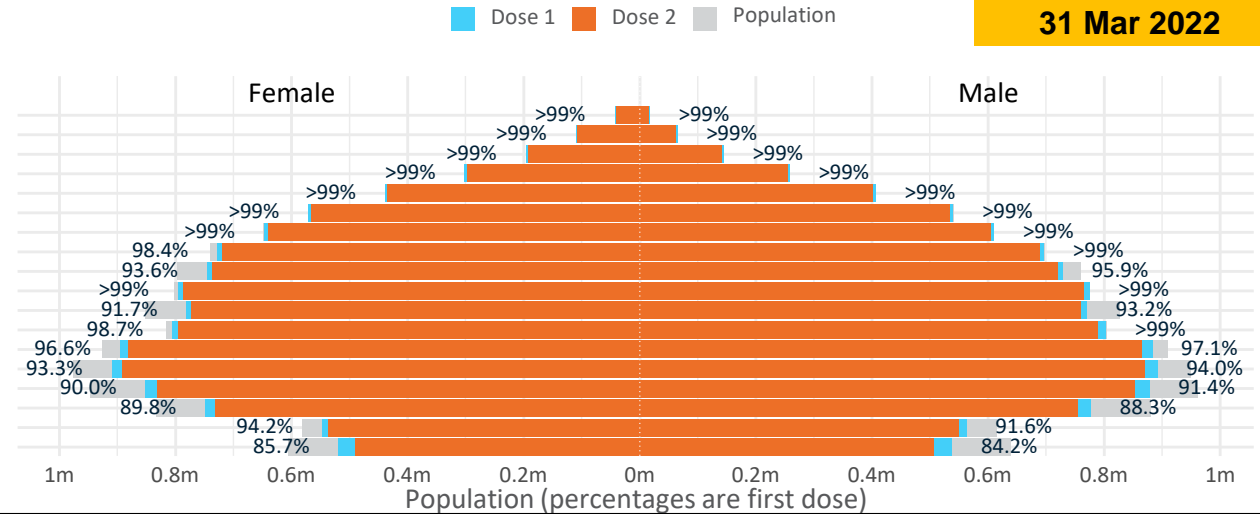
# Doses by age and sex

First and second doses by age and sex

Data as at:  
31 Mar 2022

	16+	50+	12-15	5-11
Dose 1	96.81% (19,962,723 doses / 20,619,959 people)	>99% (8,825,006 doses / 8,749,703 people)	84.96% (1,056,913 doses / 1,243,990 people)	52.30% (1,190,657 doses / 2,276,638 people)
Dose 2	95.15% (19,618,907 doses / 20,619,959 people)	>99% (8,715,278 doses / 8,749,703 people)	80.08% (996,234 doses / 1,243,990 people)	27.47% (625,311 doses / 2,276,638 people)

Age	Dose 1	Dose 2
95+	60,390 (>99%)	56,995 (>99%)
90-94	174,997 (>99%)	169,224 (>99%)
85-89	340,663 (>99%)	333,454 (>99%)
80-84	559,732 (>99%)	552,166 (>99%)
75-79	845,653 (>99%)	837,015 (>99%)
70-74	1,112,025 (>99%)	1,100,871 (>99%)
65-69	1,259,271 (>99%)	1,244,783 (98.9%)
60-64	1,425,854 (>99%)	1,409,276 (98.1%)
55-59	1,475,265 (94.8%)	1,458,198 (93.7%)
50-54	1,571,156 (>99%)	1,553,296 (>99%)
45-49	1,552,114 (92.6%)	1,532,373 (91.4%)
40-44	1,611,010 (>99%)	1,585,692 (97.9%)
35-39	1,782,907 (97.2%)	1,749,708 (95.4%)
30-34	1,809,750 (94.1%)	1,766,954 (91.9%)
25-29	1,739,692 (91.2%)	1,691,658 (88.7%)
20-24	1,531,435 (89.4%)	1,491,598 (87.1%)
16-19	1,110,809 (92.9%)	1,085,646 (90.8%)
12-15	1,056,913 (85.0%)	996,234 (80.1%)



	AUS	ACT	NSW	NT	QLD	SA	TAS	VIC	WA
16 and over - dose 1	19,962,723	351,604	6,304,853	174,321	3,843,672	1,370,256	443,500	5,144,078	2,085,208
16 and over - dose 2	19,618,907	346,187	6,209,990	169,511	3,774,623	1,339,202	433,999	5,067,961	2,048,715
16 and over - population	20,619,959*	344,037	6,565,651	190,571	4,112,707	1,440,400	440,172	5,407,574	2,114,978
16 and over % with dose 1	96.81%	>99%	96.03%	91.47%	93.46%	95.13%	>99%	95.13%	98.59%
16 and over % with dose 2	95.15%	>99%	94.58%	88.95%	91.78%	92.97%	98.60%	93.72%	96.87%
5 to 11 - dose 1	1,190,657	31,783	354,416	13,137	208,044	83,913	28,691	324,456	138,776
5 to 11 - dose 2	625,311	21,423	192,854	5,995	109,347	45,010	18,720	167,833	61,271
5 to 11 - population	2,276,638	39,789	716,460	24,750	478,731	148,816	45,033	578,499	244,154
5 to 11 % with dose 1	52.30%	79.88%	49.47%	53.08%	43.46%	56.39%	63.71%	56.09%	56.84%
5 to 11 % with dose 2	27.47%	53.84%	26.92%	24.22%	22.84%	30.25%	41.57%	29.01%	25.10%
12 to 15 - dose 1	1,056,913	20,102	325,747	10,912	207,583	68,518	22,925	276,217	115,675
12 to 15 - dose 2	996,234	19,445	310,306	9,778	193,636	64,602	21,720	263,193	105,517
12 to 15 - population	1,243,990	19,693	390,330	13,060	270,146	82,747	26,308	308,611	132,869
12 to 15 % with dose 1	84.96%	>99%	83.45%	83.55%	76.84%	82.80%	87.14%	89.50%	87.06%
12 to 15 % with dose 2	80.08%	98.74%	79.50%	74.87%	71.68%	78.07%	82.56%	85.28%	79.41%

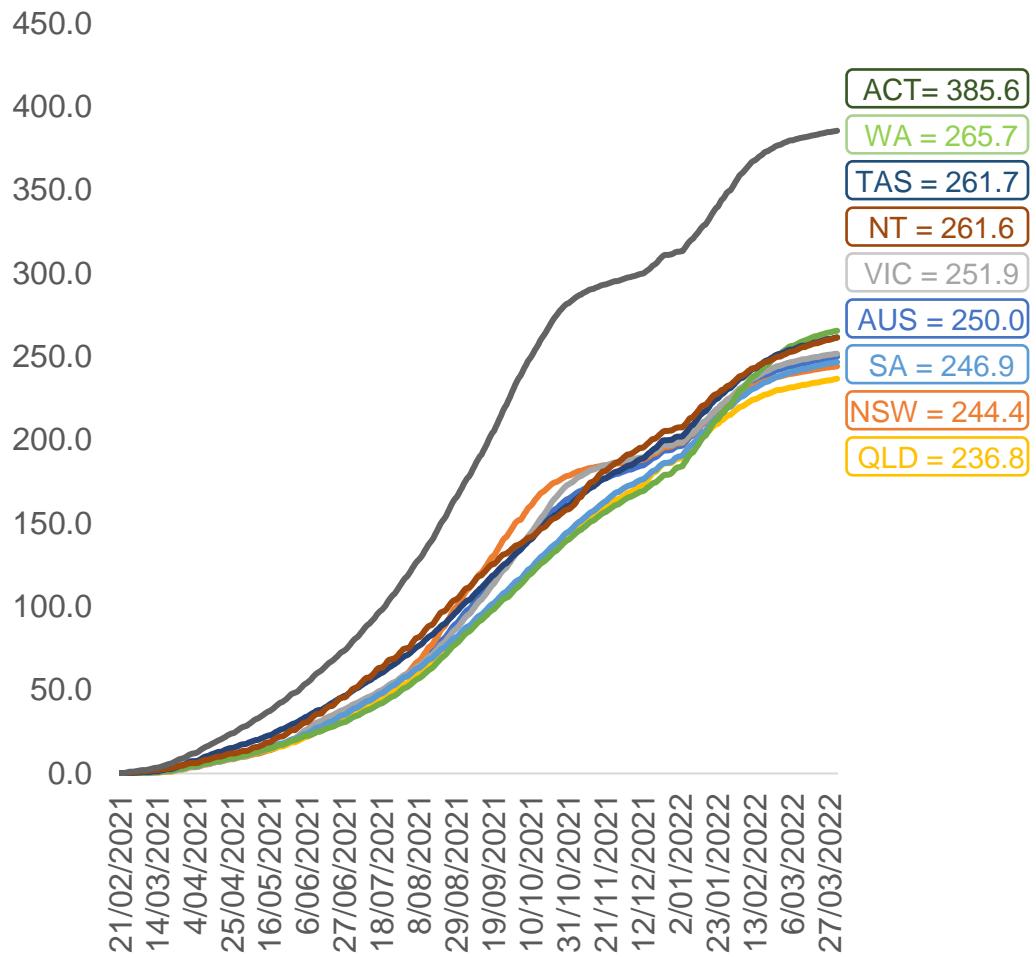
\*National population will not equal sum of listed jurisdictions due to a small number of people counted in national population residing in some 'other' territories. Sum of state doses will not add to national total as some records are unable to be geocoded to a State or Territory.  
Doses sourced from Australian Immunisation Register, population from ABS ERP June 2020



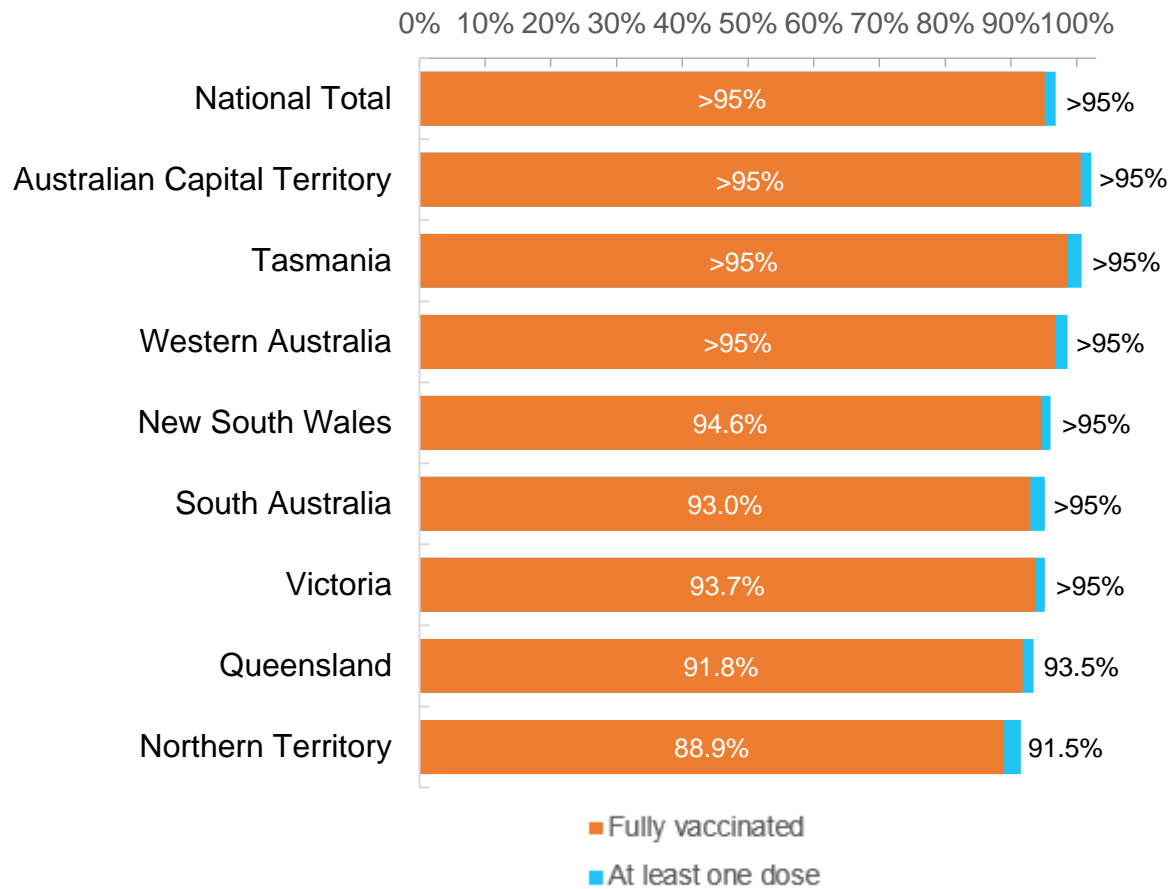
Data as at:  
31 Mar 2022

# Vaccinations by location

Cumulative total doses administered vs eligible state populations\*



First and Second Doses by residential location



\*Not an indication of percentage vaccinated, numbers will exceed 100 due to multiple doses required per person of the population. All doses are included for those aged 12 and above, and are based on vaccination provider location.



# Aboriginal and Torres Strait Islander peoples

## Number of people vaccinated

Data as at:  
29 Mar 2022  
Updated weekly

Australia's COVID-19  
Vaccine Roadmap



**436,084**

people over the age of 16  
have had at least one dose

**84.2%**

of people over the age of 16  
have had at least one dose



**414,780**

people over the age of 16  
are fully vaccinated

**80.0%**

of people over the age of 16 are  
fully vaccinated



People aged 12 – 15 years

**48,579**

**42,396**

**68.4%**

**59.7%**

At least one dose

Fully vaccinated

### 178 Aboriginal community controlled health services (ACCHS)

0#	50	27	44	12	3	21	21
<b>ACT</b>	<b>NSW</b>	<b>NT</b>	<b>QLD</b>	<b>SA</b>	<b>TAS</b>	<b>VIC</b>	<b>WA</b>

Medicare Address State <sup>##</sup>	Individuals Dose 1	Individuals Dose 1 %	Individuals Dose 2	Individuals Dose 2 %
Australian Capital Territory	4,832	90.9%	4,709	88.6%
New South Wales	134,469	86.6%	131,243	84.6%
Northern Territory	42,185	89.3%	39,809	84.3%
Queensland	115,088	81.2%	109,024	76.9%
South Australia	19,764	79.6%	18,238	73.4%
Tasmania	13,863	88.4%	13,424	85.6%
Victoria	35,253	89.7%	34,396	87.5%
Western Australia	53,370	85.3%	48,462	77.5%
Unknown/Other Territories	17,260	65.7%	15,475	58.9%
<b>Totals</b>	<b>436,084</b>	<b>84.2%</b>	<b>414,780</b>	<b>80.0%</b>

Source: Australian Immunisation Register

\*Identifying as Aboriginal and Torres Strait Islander is optional and the estimated population may be under reported.

\*\*Includes all Aboriginal and Torres Strait Islander peoples who have received a vaccination, not limited to those administered in an ACCHS setting

#ACCHS in the ACT are currently operating as a Commonwealth Vaccine Clinics so not included to avoid double counting

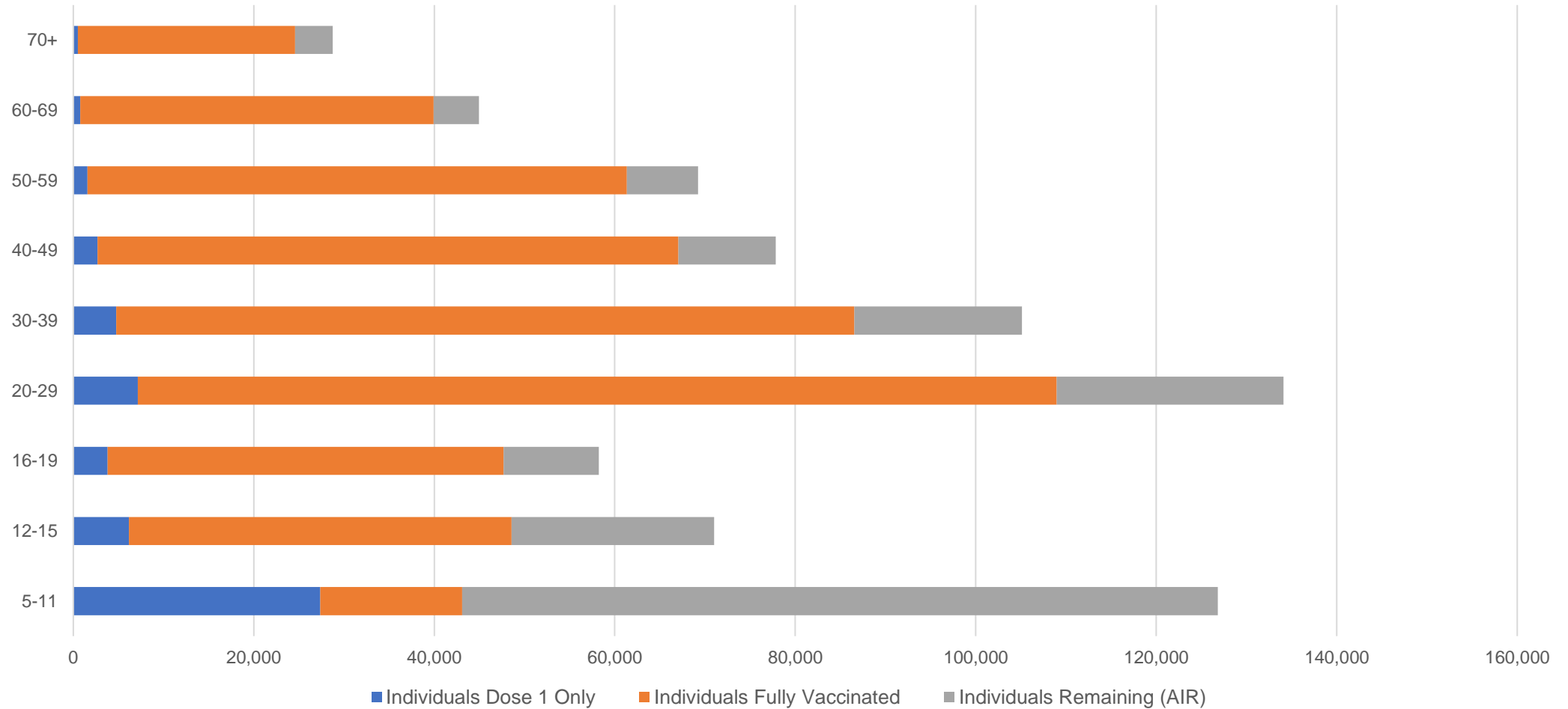
##The above table includes all identified Aboriginal and Torres Strait Islander people who are aged 16 and above by their state of residence.

# Aboriginal and Torres Strait Islander peoples

## Number of people vaccinated by age

Data as at:  
29 Mar 2022  
Updated weekly

Australia's COVID-19  
Vaccine Roadmap



Source: Australian Immunisation Register

# Commonwealth primary care

Data as at:  
31 Mar 2022

Australia's COVID-19  
Vaccine Roadmap



## Primary care vaccine administration sites

<b>5,793</b>	<b>128</b>	<b>178</b>	<b>3,587</b>
GPs	CVCs	ACCHS	Pharmacies



**34,479,037** total vaccine doses administered  
primary care settings as at 31 March  
**+ 47,186** recorded in the last 24 hours

## Primary care vaccinations by provider type

	Doses administered	Daily increase	7 day increase
<b>General Practice*</b> includes other Commonwealth	27,882,411	30,022	204,379
<b>Pharmacy</b>	6,596,626	17,164	112,762

**NSW**  
**11,940,615**  
(+13,532 daily increase)

**VIC**  
**8,599,046**  
(+10,193 daily increase)

**QLD**  
**6,625,975**  
(+9,458 daily increase)

**WA**  
**3,602,661**  
(+6,483 daily increase)

**TAS**  
**639,213**  
(+1,169 daily increase)

**SA**  
**2,045,080**  
(+2,770 daily increase)

**ACT**  
**541,897**  
(+497 daily increase)

**NT**  
**206,776**  
(+334 daily increase)

**277,774**

doses administered to persons residing in other territories or with missing residential information

\*General practice includes Commonwealth Vaccination Clinics, Aboriginal Community Health Centres, Royal Flying Doctor Service and other Commonwealth vaccination facilities

Source: Australian Immunisation Register

# Commonwealth aged care and disability doses administered

Data as at:  
31 Mar 2022



**1,266,967** (+ 481 last 24 hours)

Total vaccine doses administered in aged care and disability facilities as at 31 March

Number of doses administered as part of the Commonwealth aged and disability care rollout

**NSW**  
**558,532**  
(+55 daily increase)

**VIC**  
**234,807**  
(-46# daily increase)

**QLD**  
**201,321**  
(+191 daily increase)

**WA**  
**106,721**  
(+119 daily increase)

**TAS**  
**22,471**  
(-6# daily increase)

**SA**  
**83,905**  
(-25# daily increase)

**ACT**  
**16,739**  
(+5 daily increase)

**NT**  
**7,485**  
(0 daily increase)

**34,986**

doses administered to persons residing in other territories or with missing residential information

Source: Australian Immunisation Register

\*Sourced from the Australian Immunisation Register. Includes all persons vaccinated at participating residential aged care, disability and related industry settings.

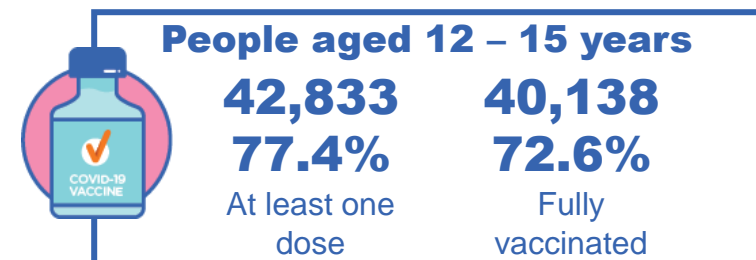
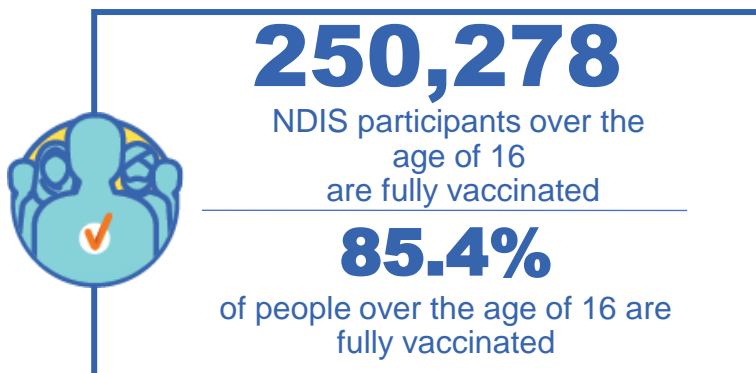
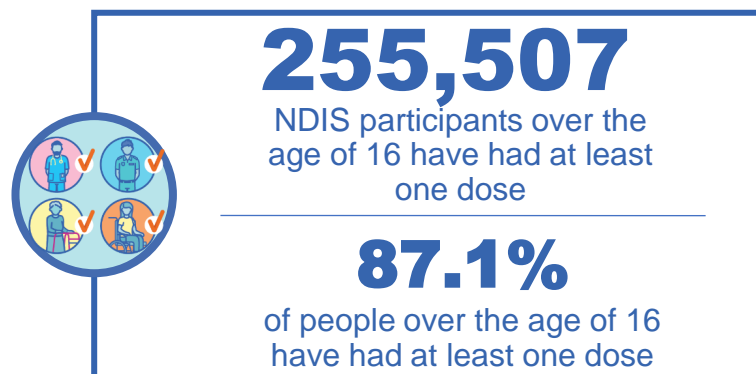
\*\*State level breakdown indicates the residential location and may not align to the state in which the vaccination occurred.

# Numbers are calculated as difference in daily cumulative reported numbers to allow for historical corrections in all data sources. This can occasionally result in negative numbers, such as for VIC, TAS and SA, where historical details about doses have been updated.

# National Disability Insurance Scheme (NDIS) reported vaccinations

Data as at:  
31 March 2022  
Updated weekly

Australia's COVID-19  
Vaccine Roadmap



## NDIS participant vaccinations

	People aged 16+ with at least one dose	People aged 16+ fully vaccinated	% People aged 16+ with at least one dose	% People aged 16+ fully vaccinated
ACT	4,840	4,774	<b>89.2%</b>	<b>88.0%</b>
NSW	78,610	77,294	<b>87.6%</b>	<b>86.2%</b>
NT	2,208	2,133	<b>77.4%</b>	<b>74.8%</b>
QLD	50,315	49,233	<b>85.5%</b>	<b>83.7%</b>
SA	20,809	20,248	<b>84.8%</b>	<b>82.5%</b>
TAS	6,408	6,238	<b>87.2%</b>	<b>84.9%</b>
VIC	68,002	66,752	<b>88.3%</b>	<b>86.7%</b>
WA	24,315	23,606	<b>88.3%</b>	<b>85.7%</b>
<b>National</b>	<b>255,507</b>	<b>250,278</b>	<b>87.1%</b>	<b>85.4%</b>

Source: Linkage between National Disability Insurance Agency data and the Australian Immunisation Register. Total NDIS participant numbers as at 28th February. Australian Immunisation Register data as at 30 March. Includes all participants regardless of residence type.

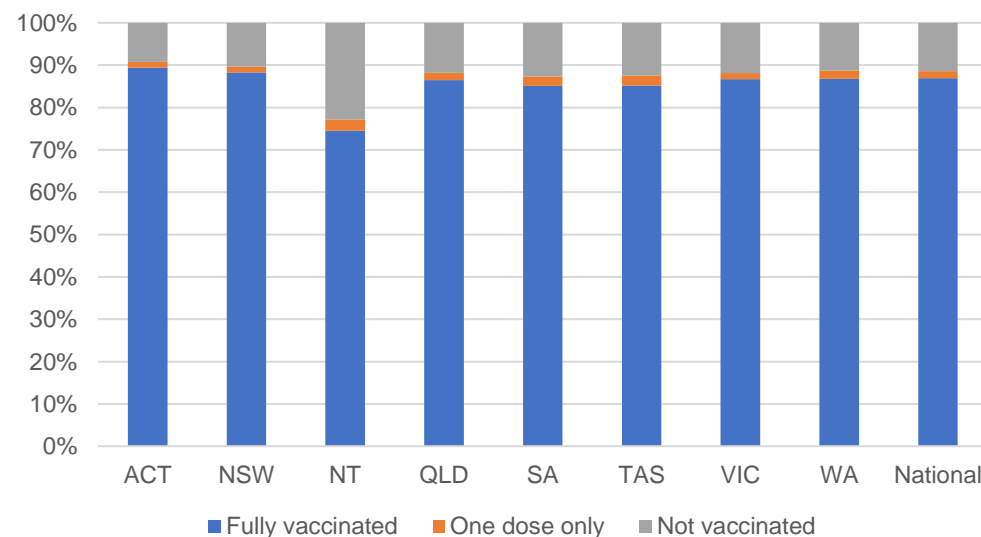
# National Disability Insurance Scheme (NDIS) reported vaccinations

Data as at:  
31 March 2022  
Updated Weekly

Australia's COVID-19  
Vaccine Roadmap

NATIONAL	Total people with at least one dose	People fully vaccinated	Total number of individuals in cohort	% People with at least one dose	% People fully vaccinated
NDIS participants living in disability accommodation	20,686	20,315	23,352	88.6%	87.0%

## NDIS participants in disability and aged care accommodation



Source: Linkage between National Disability Insurance Agency data and the Australian Immunisation Register. Includes participants residing in disability accommodation only.  
Source: Total NDIS participant numbers as at 28th February. Participant data as at 29 March. Australian Immunisation Register data as at 30 March. Worker data as at 31 March.

## NDIS workforce vaccinations

	NDIS workers with at least one dose	NDIS workers fully vaccinated	% NDIS workers with at least one dose	% NDIS workers fully vaccinated
NSW	121,300	117,509	98.1%	95.1%
VIC	116,416	111,987	98.3%	94.6%
QLD	69,423	68,592	97.5%	96.3%
WA	32,844	30,848	98.6%	92.6%
SA	35,416	31,990	98.5%	89.0%
TAS	10,778	10,503	99.7%	97.2%
ACT	3,523	3,492	99.1%	98.2%
NT	3,378	3,205	97.4%	92.4%
<b>TOTAL</b>	<b>393,078</b>	<b>378,126</b>	<b>98.2%</b>	<b>94.5%</b>

Source: the NDIS Commission has established a requirement for registered NDIS providers who provide intensive disability support services to report on the vaccination status of workers they employ, or otherwise engage, to deliver NDIS-funded supports and services, and who are required to be vaccinated in accordance with in-force state and territory public health orders. The statistics reflect data reported to the NDIS Commission by registered NDIS providers and should be considered indicative and subject to change

Note: Some registered NDIS providers are yet to report on the vaccination status of their workforce. The NDIS Commission is working with those providers around reporting requirements.

Remaining workers not included include those exempt from vaccination requirements, workers whose vaccination status is not yet verified by the provider (such as workers on leave) and provider reporting anomalies.

# Residential aged care vaccination rollout

Data as at:  
31 Mar 2022  
Updated weekly

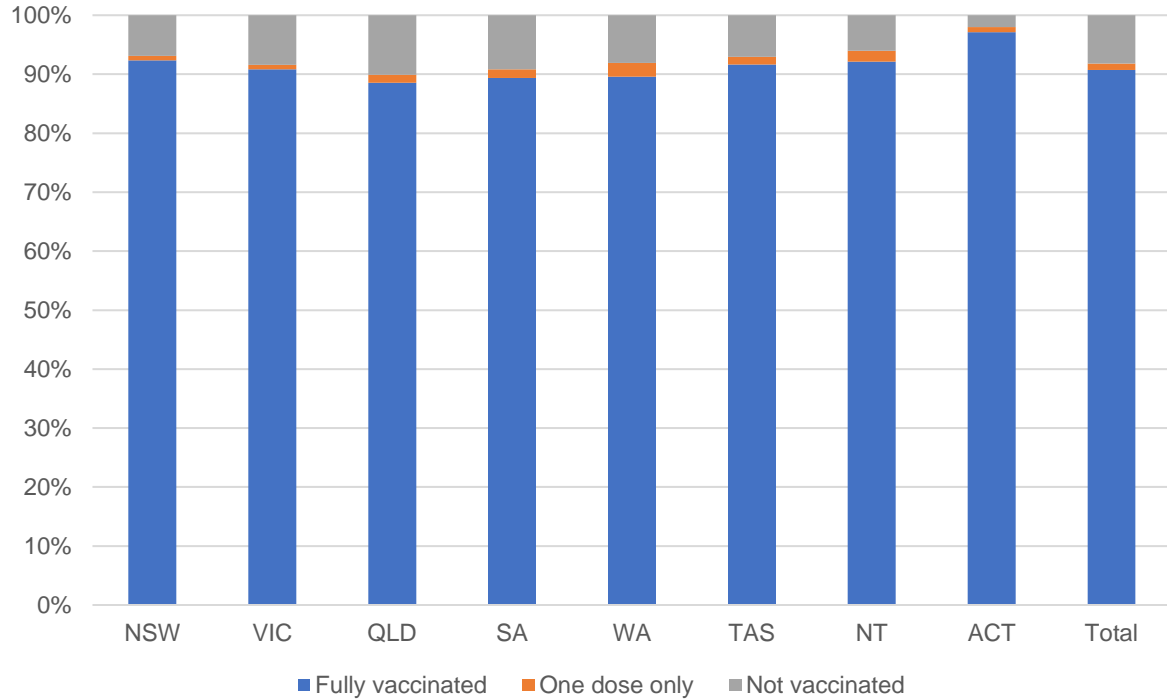
Residential aged care facilities status

**100%**  
Commonwealth facilities visited (2,537 planned sites)

**173,909**  
People fully vaccinated

**176,002**  
People with at least one dose

## Aged care resident vaccinations



## Aged care worker vaccinations

Jurisdictions	Total workers with at least one dose	Workers fully vaccinated	% Workers with at least one dose	% Workers fully vaccinated
NSW	77,436	77,331	97.6%	97.5%
VIC	65,380	65,378	95.3%	95.3%
QLD	46,376	46,370	95.2%	95.2%
SA	26,364	26,344	97.6%	97.5%
WA	23,838	23,836	98.9%	98.9%
TAS	7,645	7,645	100.0%	100.0%
NT	847	847	100.0%	100.0%
ACT	2,987	2,987	100.0%	100.0%
<b>Total</b>	<b>250,873</b>	<b>250,738</b>	<b>96.8%</b>	<b>96.7%</b>

Source: My Aged Care Portal vaccination progress

\*Status updates are provided by facilities at least once per week. Reporting is updated Monday to Friday to encompass different facility updates being made on different days.

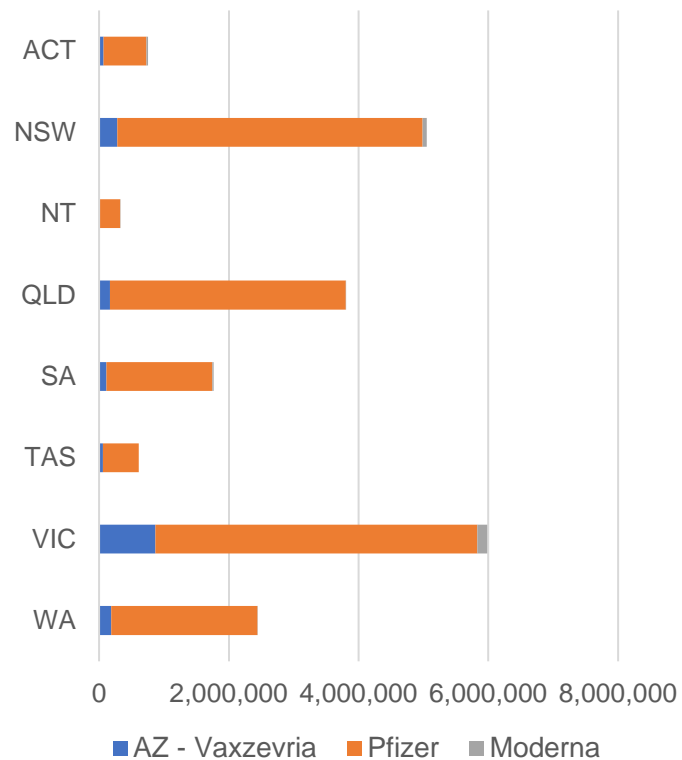
Data is sourced directly from Aged Care Service Providers and is not drawn or closely aligned with data from AIR due to inconsistencies and potential lags in uploading of records.



Data as at:  
31 Mar 2022

## Jurisdiction administered

Total vaccine doses administered in State and Territory clinics as at 31 March



**20,738,094** total vaccine doses administered in State and Territory clinics as at 31 March  
 + **14,376** recorded in the last 24 hours  
 + **121,231** recorded in the last 7 days

**NSW**  
**5,052,081**  
 (+3,770 daily increase)

**VIC**  
**5,985,379**  
 (+2,586 daily increase)

**QLD**  
**3,800,925**  
 (+2,109 daily increase)

**WA**  
**2,443,429**  
 (+2,368 daily increase)

**TAS**  
**610,732**  
 (+8 daily increase)

**SA**  
**1,768,039**  
 (+1,672 daily increase)

**ACT**  
**752,869**  
 (+1,256 daily increase)

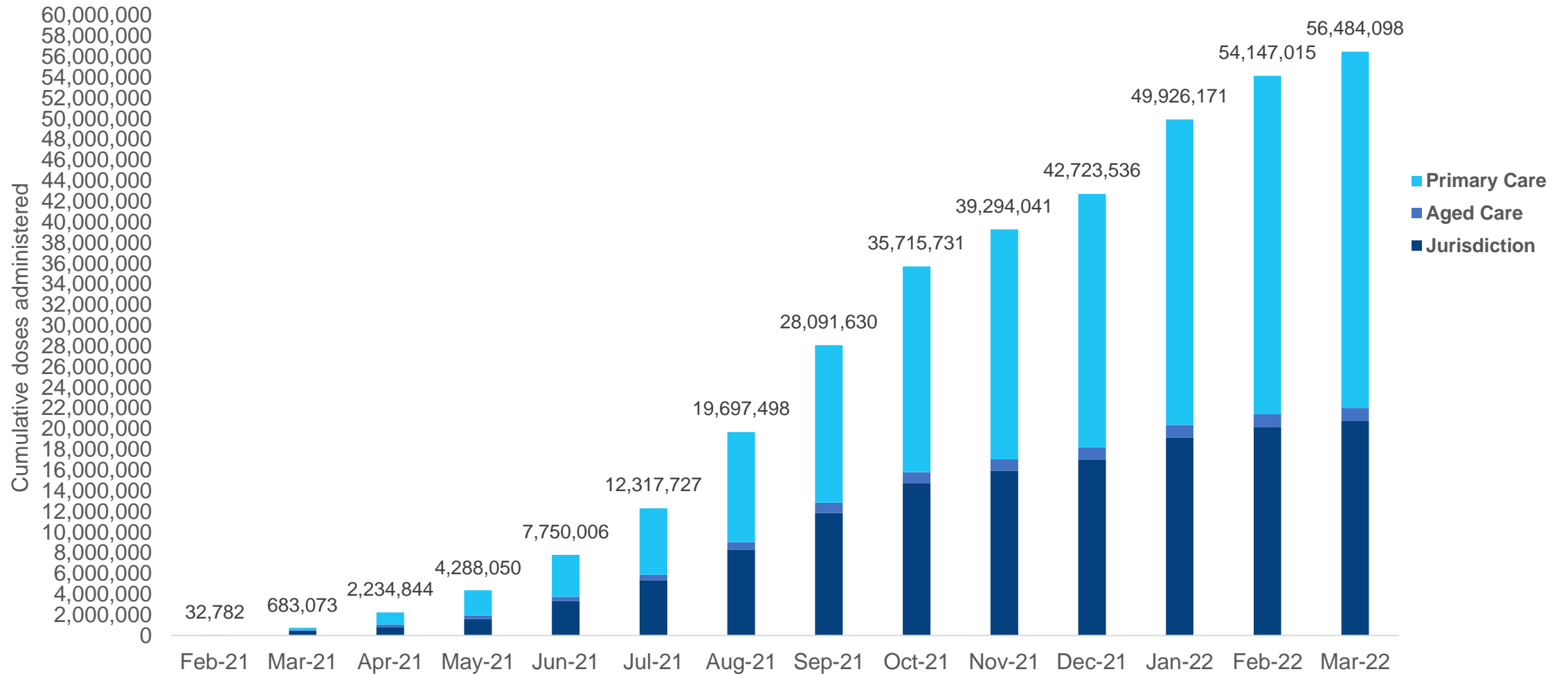
**NT**  
**324,640**  
 (+607 daily increase)

\*Sourced from the Australian Immunisation Register. Numbers are calculated as difference in daily cumulative reported numbers to allow for historical corrections.

Source: Australian Immunisation Register

Data as at:  
31 Mar 2022

# Cumulative doses administered by channel



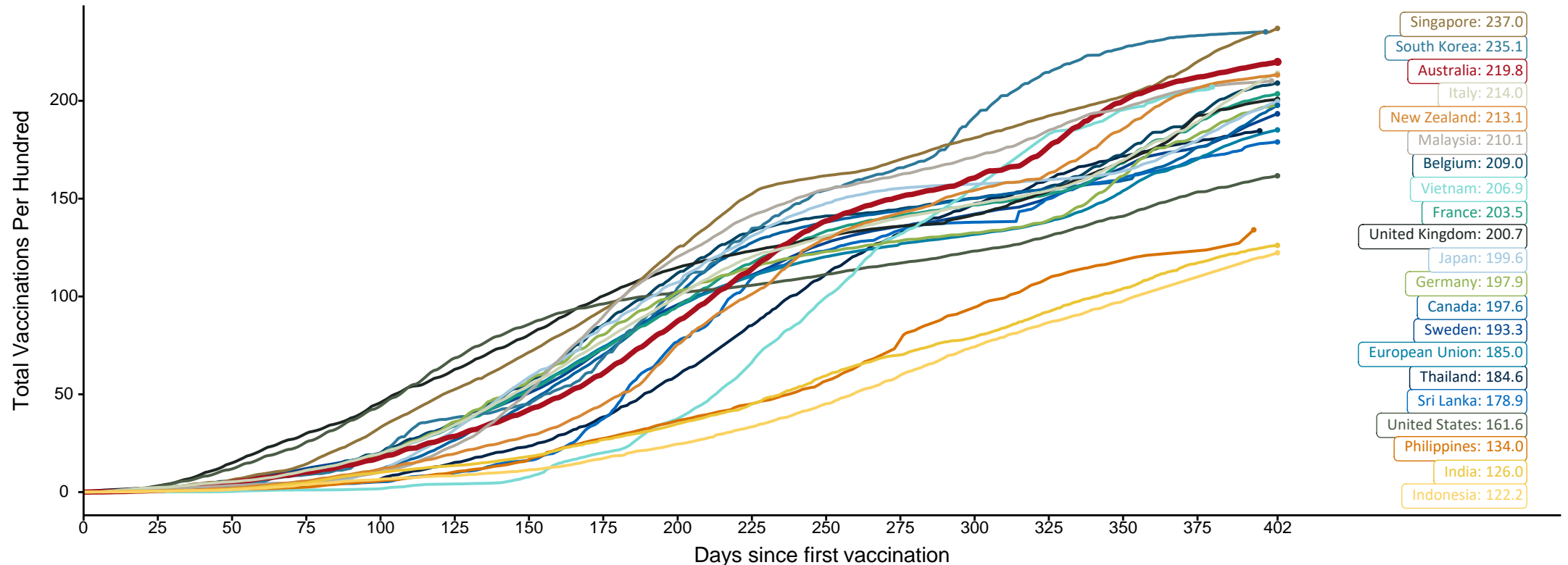
Source: Australian Immunisation Register

# Doses at equivalent stages of rollout (Day 402)

Data as at:  
31 Mar 2022

The x-axis is truncated at the length of Australia's vaccination program. Countries with intermittent reporting have had their doses per 100 imputed to Australia's current stage of rollout. Israel excluded as it is beyond scale of the graph

Cumulative doses administered (31 Mar): **56,484,098**

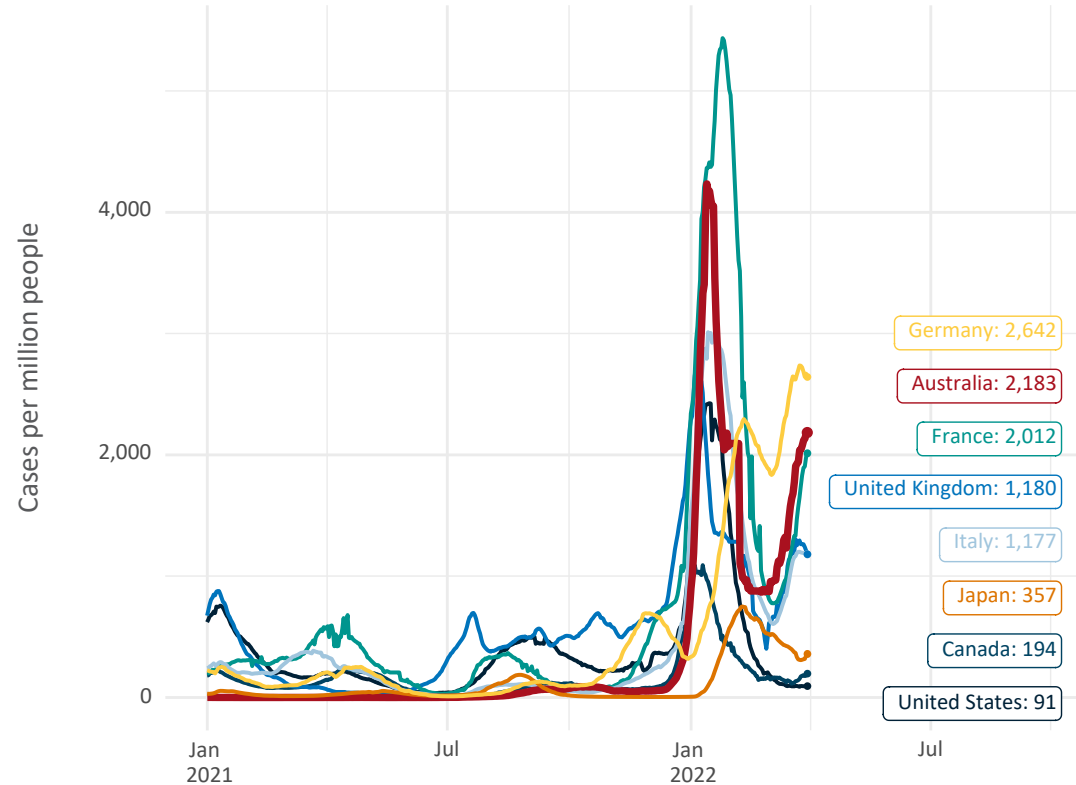


Note: From 11 January 2022, data for Australia includes all doses administered to people 5 and over. Prior to 11 January, data was for 12 and over.  
Source: Department of Health (Australia), Our World in Data (international)  
Latest data: 31 March

Data as at:  
31 Mar 2022

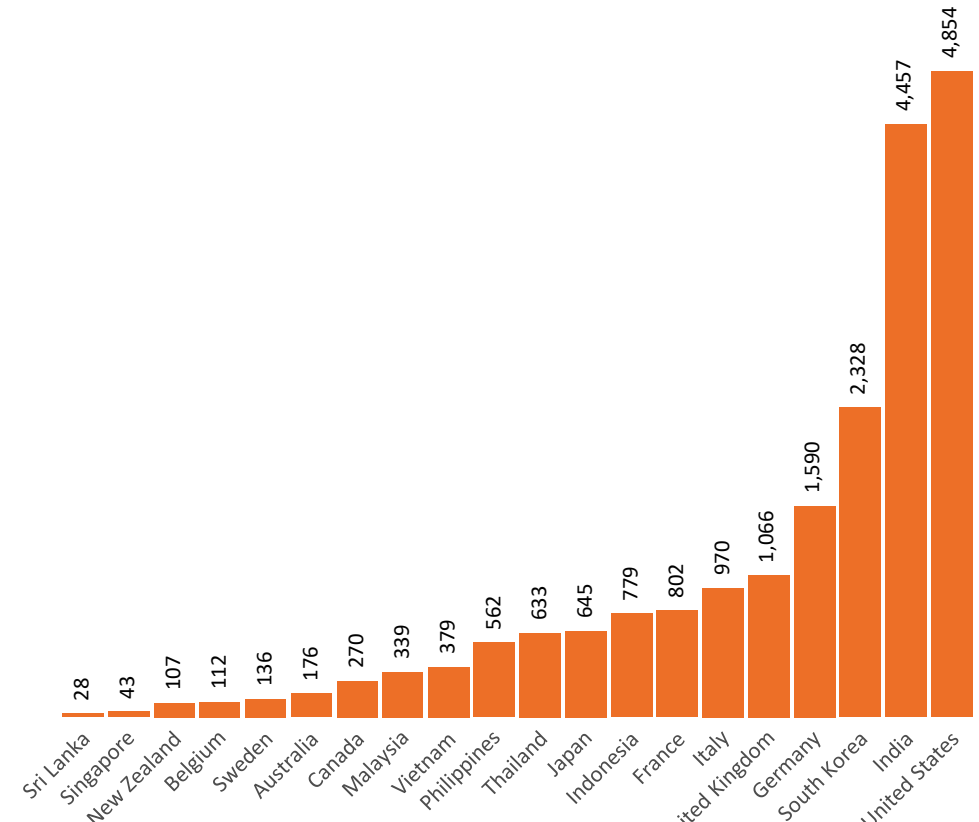
# International data – COVID-19

New daily cases per million in 2021, Australia and G7 countries  
Smoothed - 7 day average



Source: OWID  
Data downloaded: 01 Apr 2022 07:30  
Latest data: 30 Mar 2022

COVID-19 deaths in past 7 days - Australia and select countries



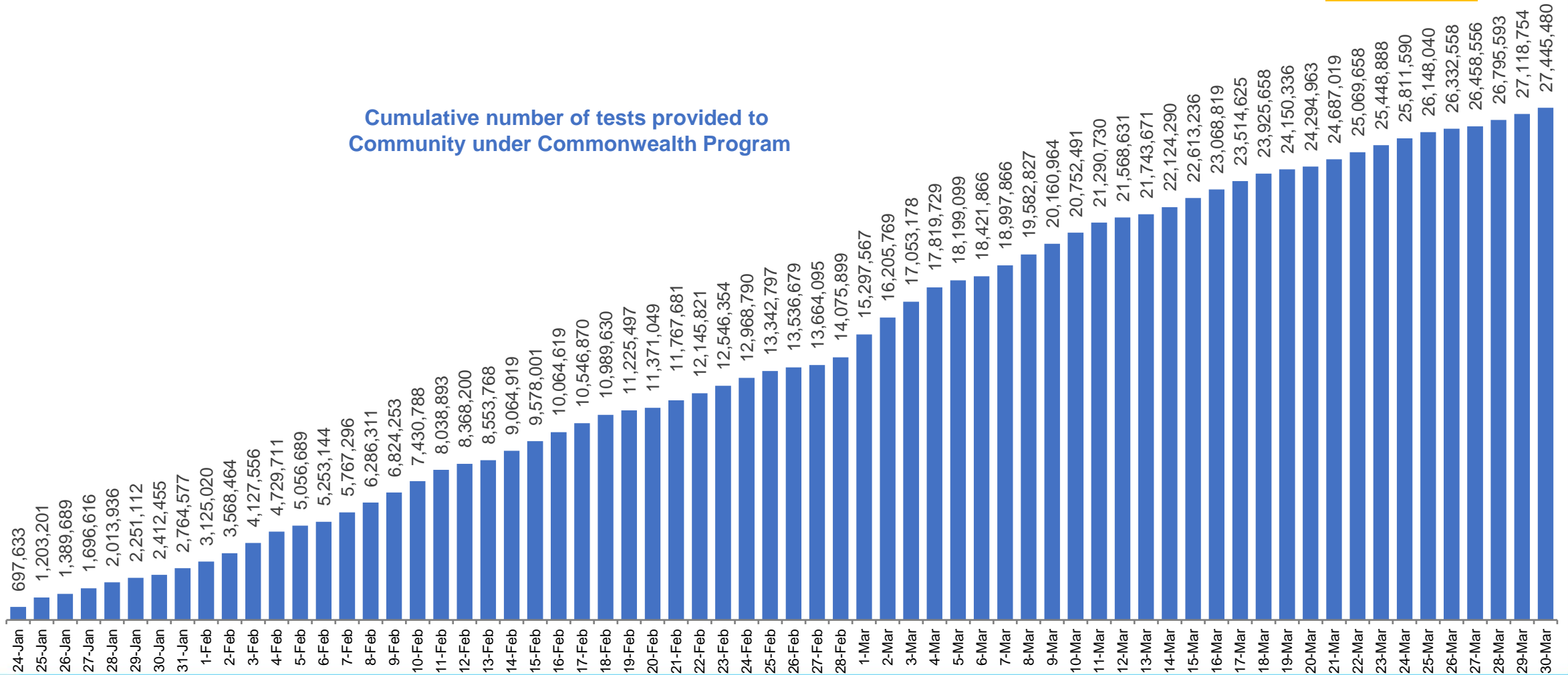
Source: OWID  
Data downloaded: 01 Apr 2022 07:30  
Latest data: 30 Mar 2022

Data as at:  
31 Mar 2022

# Concessional rapid antigen test program


5,620 pharmacies have delivered over 27.4 million rapid antigen tests to more than 4.2m eligible concession card holders under the Government's concessional rapid antigen test program.

Cumulative number of tests provided to  
Community under Commonwealth Program



# Pandemic Response Payments

Data as at midnight: 27 Mar 2022  
Updated weekly



**2.38 million**  
People have received at least one COVID Disaster Payment (including ISP200)

**\$13.97 billion**  
Paid Out as at 27 Mar 2022


**7.33 million**  
Claims granted across three different payments



**93%**  
of Claims Received Digitally



<b>COVID Disaster Payment:</b>	5.89 million claims received - 2.19 million individuals paid a total of \$12.59 billion.
<b>\$200 Income Support Payment:</b>	353,000 claims received - 183,000 individuals paid a total of \$268.9 million.
<b>Pandemic Leave Disaster Payment:</b>	1.59 million claims received - 980,000 individuals paid a total of \$1.11 billion.



**THREE PAYMENTS AVAILABLE**

**COVID Disaster Payment**  
assisting during a lockdown event in a Commonwealth hotspot.

**Income Support Payment \$200**  
for income support recipients who lost at least 8 hours of work.

**Pandemic Leave Disaster Payment**  
for those who have to self-isolate, quarantine or care.

For more information visit:  
[servicesaustralia.gov.au](https://servicesaustralia.gov.au)

## COVID-19 DISASTER PAYMENTS

**Northern Territory**  
Lockdown (#3) from 16 Nov to 22 Nov  
Claiming period ended 27 Dec

**7,500 people have received at least one COVID Disaster Payment.**

**\$6.9m paid out as at 27 Mar 2022.**

**Nil paid in initial payments in the week ending 27 Mar 2022.**

Cumulative payments made by Territory since activation on 25 Aug 2021.



Date	Cumulative Payments (\$m)
27 Feb	\$6.9m
6 Mar	\$6.9m
13 Mar	\$6.9m
20 Mar	\$6.9m
27 Mar	\$6.9m

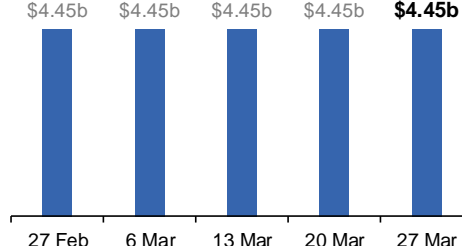
**Victoria**  
Lockdown (#6) from 6 Aug to 28 Oct  
Claiming period ended 9 Dec

**745,000 people have received at least one COVID Disaster Payment.**

**\$4.45b paid out as at 27 Mar 2022.**

**\$4,200 paid in initial and reoccurring payments in the week ending 27 Mar 2022.**

Cumulative payments made by State since activation on 8 Jun 2021.



Date	Cumulative Payments (\$b)
27 Feb	\$4.45b
6 Mar	\$4.45b
13 Mar	\$4.45b
20 Mar	\$4.45b
27 Mar	\$4.45b

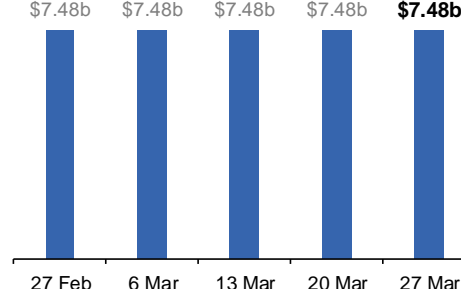
**New South Wales**  
Lockdown from 24 Jun to 10 Oct  
Claiming period ended 27 Nov

**1.08m people have received at least one COVID Disaster Payment.**

**\$7.48b paid out as at 27 Mar 2022.**

**\$1,200 paid in initial and reoccurring payments in the week ending 27 Mar 2022.**

Cumulative payments made by State since activation on 1 Jul 2021.



Date	Cumulative Payments (\$b)
27 Feb	\$7.48b
6 Mar	\$7.48b
13 Mar	\$7.48b
20 Mar	\$7.48b
27 Mar	\$7.48b

**Australian Capital Territory**  
Lockdown from 12 Aug to 14 Oct  
Claiming period ended 25 Nov

**65,000 people have received at least one COVID Disaster Payment.**

**\$344.7m paid out as at 27 Mar 2022.**

**Nil paid in initial and reoccurring payments in the week ending 27 Mar 2022.**

Cumulative payments made by Territory since activation on 20 Aug 2021.



Date	Cumulative Payments (\$m)
27 Feb	\$344.7m
6 Mar	\$344.7m
13 Mar	\$344.7m
20 Mar	\$344.7m
27 Mar	\$344.7m

# Pandemic Response Payments (continued)

Data as at midnight: 27 Mar 2022  
Updated weekly

## COVID-19 DISASTER PAYMENTS

