



**CURRENT STATUS OF CONFIRMED CASES**



**103**



ACT	NSW	NT	QLD	SA	TAS	VIC	WA
3	47	0	16	13	1	15	8

**2,844**



ACT	NSW	NT	QLD	SA	TAS	VIC	WA
62	1,437	24	480	201	38	366	236

**67,572,528**

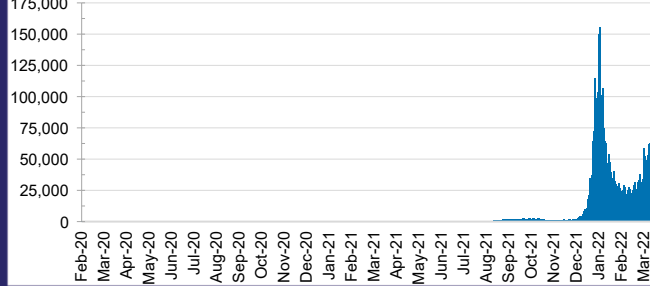


**TOTAL TESTS  
REPORTED**

ACT	NSW	NT	QLD
1,010,836	30,337,448	750,563	7,177,090

SA	TAS	VIC	WA
4,367,293	617,394	20,167,488	3,144,416

**DAILY NUMBER OF REPORTED CASES**

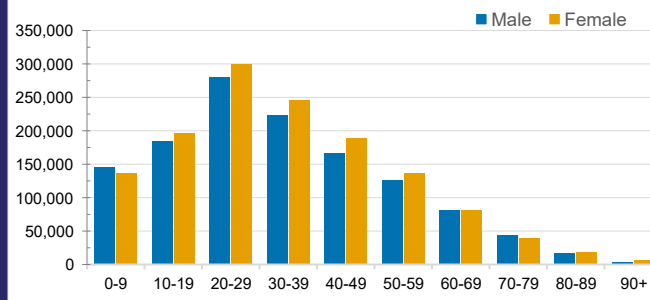


**CASES IN AGED CARE SERVICES**

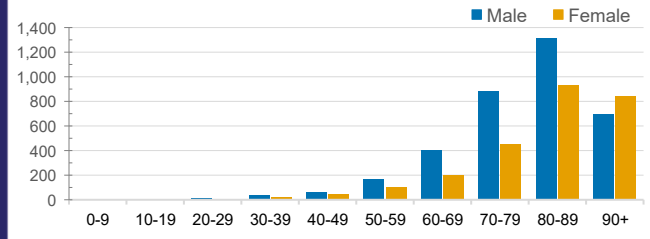
Confirmed Cases	Australia	ACT	NSW	NT	QLD	SA	TAS	VIC	WA
Residential Care Recipients	26193 (1974)	253 (16)	10043 (630)	97 (4)	4593 (248)	1751 (98)	354 (7)	8073 (938)	1029 (33)
In Home Care Recipients	205 (13)	0	45 (3)	0	15	1	5 (2)	138 (7)	1 (1)

Cases in care recipients (deaths)

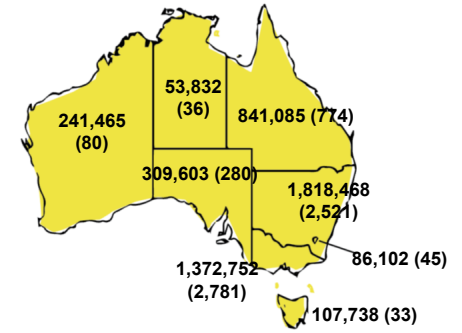
**CASES BY AGE GROUP AND SEX**



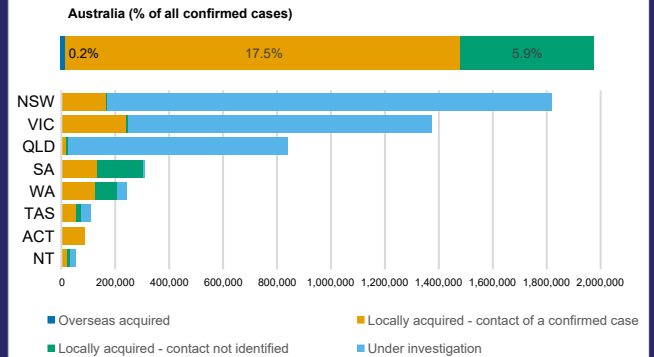
**DEATHS BY AGE GROUP AND SEX**



**CASES (DEATHS) BY STATE AND TERRITORIES**



**CASES BY SOURCE OF INFECTION**



**PUBLIC HEALTH RESPONSE MEASURE**

