



CURRENT STATUS OF CONFIRMED CASES



95



ACT	NSW	NT	QLD	SA	TAS	VIC	WA
3	44	1	15	11	1	12	8

2,818



ACT	NSW	NT	QLD	SA	TAS	VIC	WA
55	1,435	28	479	202	41	335	243

67,478,280

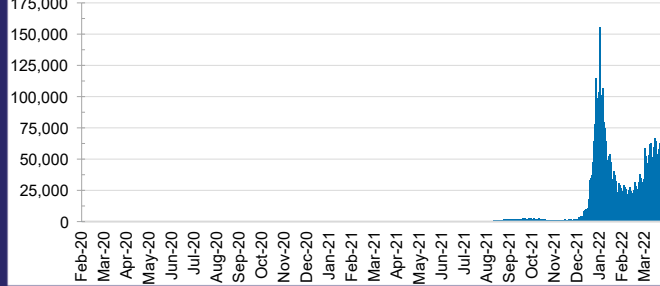


**TOTAL TESTS
REPORTED**

ACT	NSW	NT	QLD
1,007,650	30,293,115	749,610	7,167,303

SA	TAS	VIC	WA
4,352,844	615,622	20,147,720	3,144,416

DAILY NUMBER OF REPORTED CASES

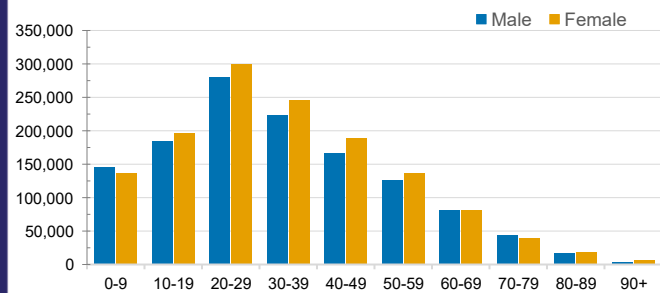


CASES IN AGED CARE SERVICES

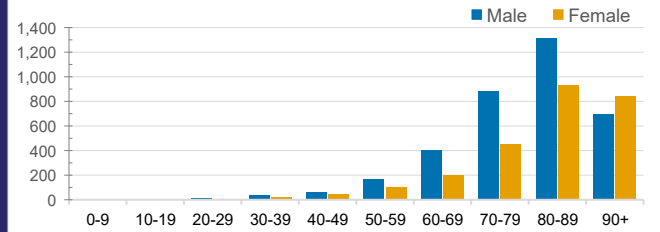
Confirmed Cases	Australia	ACT	NSW	NT	QLD	SA	TAS	VIC	WA
Residential Care Recipients	26193 (1974)	253 (16)	10043 (630)	97 (4)	4593 (248)	1751 (98)	354 (7)	8073 (938)	1029 (33)
In Home Care Recipients	205 (13)	0	45 (3)	0	15	1	5 (2)	138 (7)	1 (1)

Cases in care recipients (deaths)

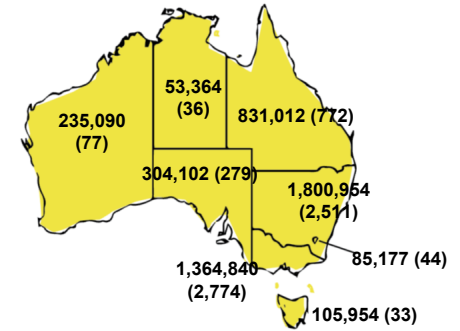
CASES BY AGE GROUP AND SEX



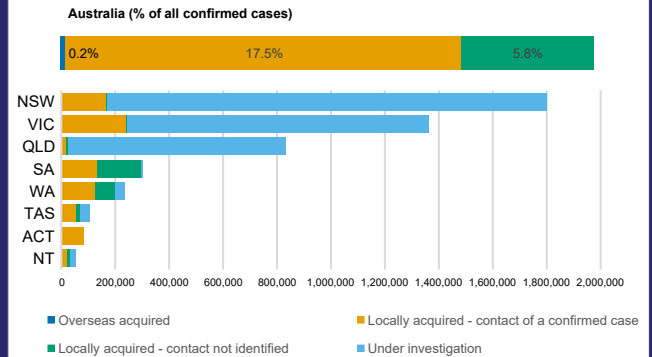
DEATHS BY AGE GROUP AND SEX



CASES (DEATHS) BY STATE AND TERRITORIES



CASES BY SOURCE OF INFECTION



PUBLIC HEALTH RESPONSE MEASURE

