



**CURRENT STATUS OF CONFIRMED CASES**



**89**



ACT	NSW	NT	QLD	SA	TAS	VIC	WA
3	39	2	16	8	0	14	7



**2,492**

ACT	NSW	NT	QLD	SA	TAS	VIC	WA
47	1,326	22	362	175	29	312	219

**66,546,212**

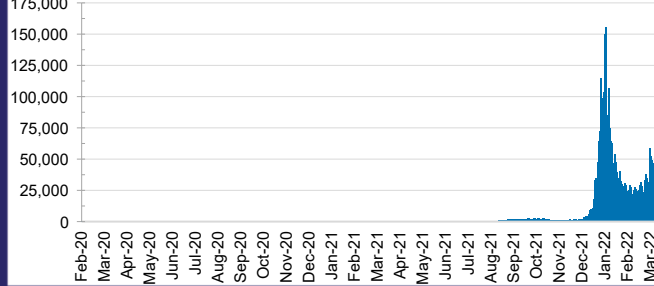


**TOTAL TESTS  
REPORTED**

ACT	NSW	NT	QLD
984,783	29,897,052	742,499	7,087,049

SA	TAS	VIC	WA
4,230,153	601,509	19,982,645	3,020,522

**DAILY NUMBER OF REPORTED CASES**

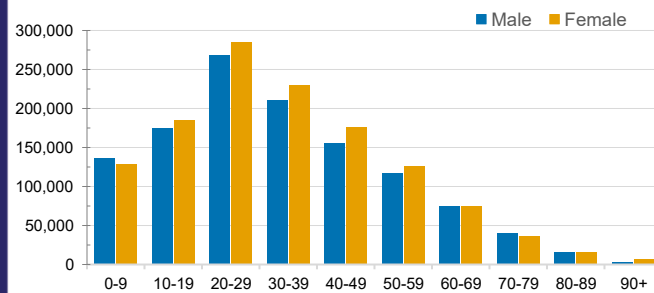


**CASES IN AGED CARE SERVICES**

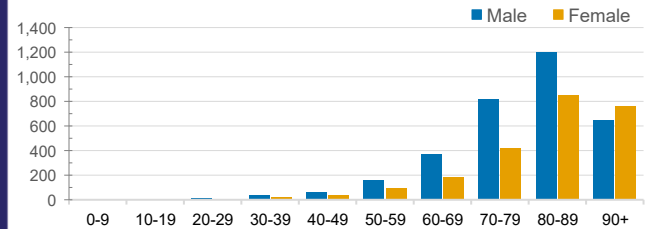
Confirmed Cases	Australia	ACT	NSW	NT	QLD	SA	TAS	VIC	WA
Residential Care Recipients	23879 (1862)	230 (15)	9181 (548)	96 (4)	4301 (240)	1533 (89)	238 (8)	7546 (935)	754 (23)
In Home Care Recipients	205 (13)	0	45 (3)	0	15	1	5 (2)	138 (7)	1 (1)

Cases in care recipients (deaths)

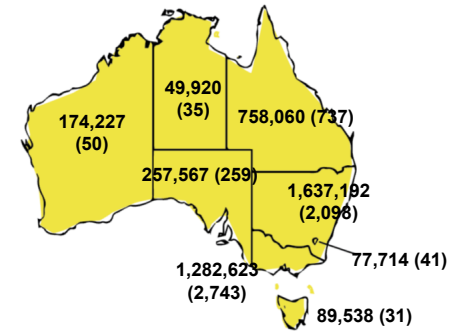
**CASES BY AGE GROUP AND SEX**



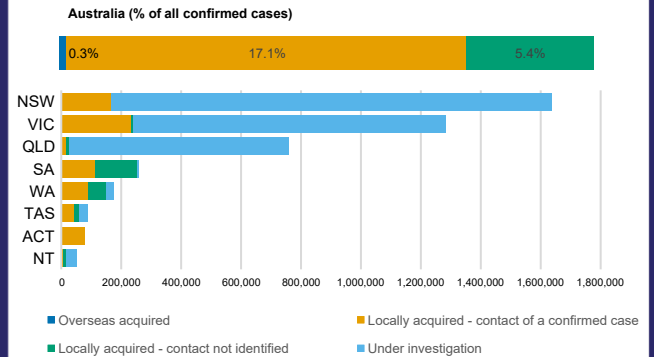
**DEATHS BY AGE GROUP AND SEX**



**CASES (DEATHS) BY STATE AND TERRITORIES**



**CASES BY SOURCE OF INFECTION**



**PUBLIC HEALTH RESPONSE MEASURE**

