



**CURRENT STATUS OF CONFIRMED CASES**



**103**



ACT	NSW	NT	QLD	SA	TAS	VIC	WA
2	50	1	16	8	1	18	7

**2,581**



ACT	NSW	NT	QLD	SA	TAS	VIC	WA
41	1,355	14	418	188	37	307	221

**66,862,126**

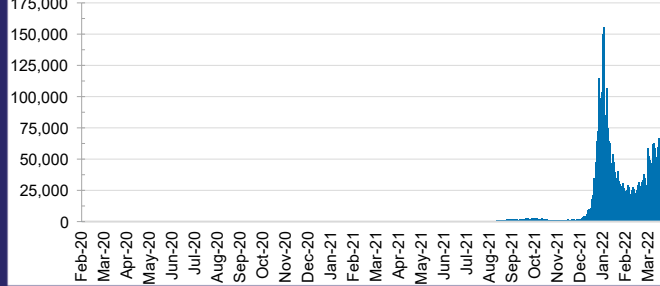


**TOTAL TESTS REPORTED**

ACT	NSW	NT	QLD
992,727	30,041,036	743,640	7,122,635

SA	TAS	VIC	WA
4,274,119	606,548	20,044,617	3,036,804

**DAILY NUMBER OF REPORTED CASES**

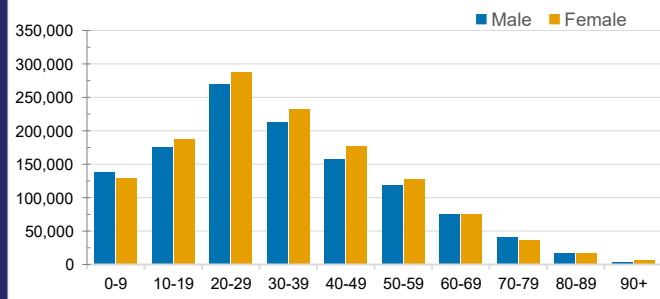


**CASES IN AGED CARE SERVICES**

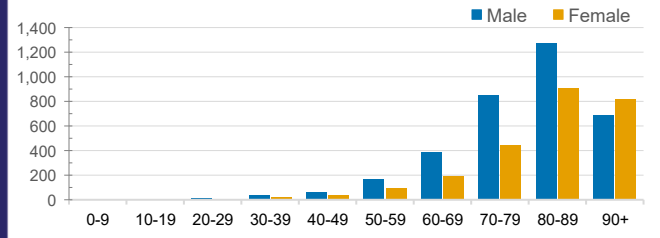
Confirmed Cases	Australia	ACT	NSW	NT	QLD	SA	TAS	VIC	WA
Residential Care Recipients	24102 (1934)	234 (15)	9253 (614)	96 (4)	4334 (242)	1549 (90)	232 (8)	7583 (936)	821 (25)
In Home Care Recipients	205 (13)	0	45 (3)	0	15	1	5 (2)	138 (7)	1 (1)

Cases in care recipients (deaths)

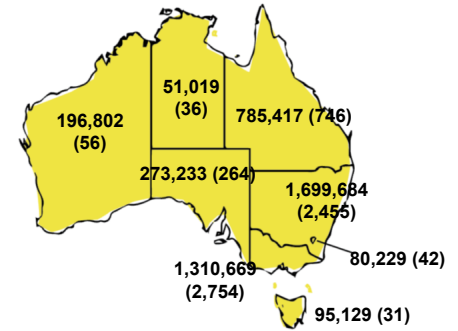
**CASES BY AGE GROUP AND SEX**



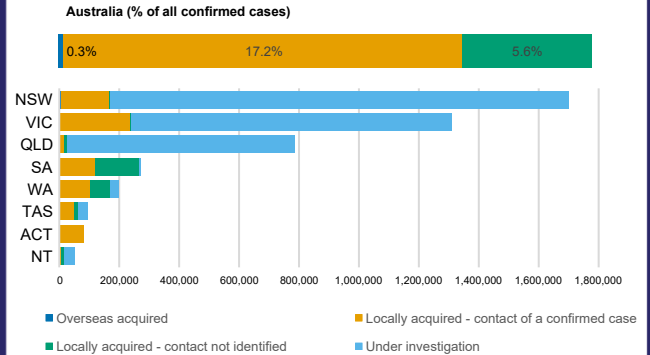
**DEATHS BY AGE GROUP AND SEX**



**CASES (DEATHS) BY STATE AND TERRITORIES**



**CASES BY SOURCE OF INFECTION**



**PUBLIC HEALTH RESPONSE MEASURE**

