



CURRENT STATUS OF CONFIRMED CASES



149



ACT	NSW	NT	QLD	SA	TAS	VIC	WA
3	76	2	15	11	1	35	6

3,284



ACT	NSW	NT	QLD	SA	TAS	VIC	WA
69	1,701	50	502	240	40	445	237

69,172,527

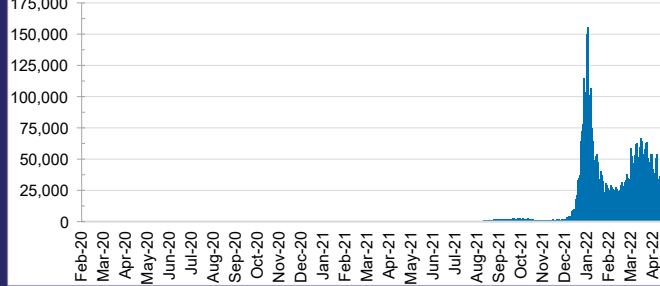


**TOTAL TESTS
REPORTED**

ACT	NSW	NT	QLD
1,052,353	30,962,009	764,837	7,308,483

SA	TAS	VIC	WA
4,580,909	643,254	20,479,396	3,381,286

DAILY NUMBER OF REPORTED CASES

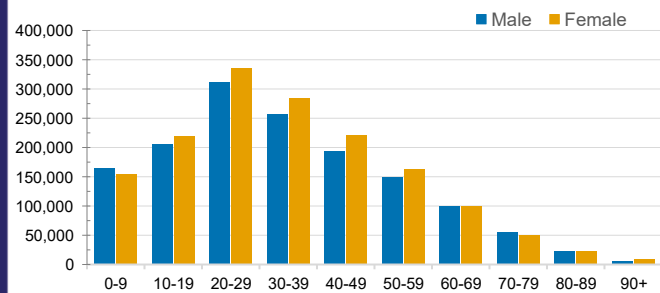


CASES IN AGED CARE SERVICES

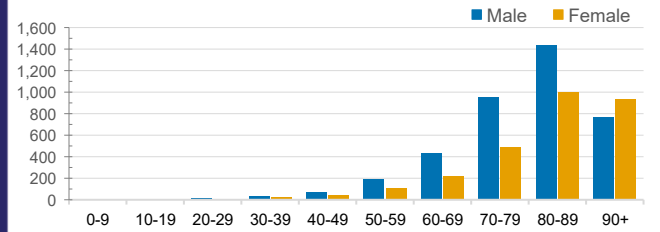
Confirmed Cases	Australia	ACT	NSW	NT	QLD	SA	TAS	VIC	WA
Residential Care Recipients	33879 (2169)	289 (18)	12542 (723)	104 (5)	5790 (268)	2568 (126)	611 (14)	10346 (964)	1629 (51)
In Home Care Recipients	205 (13)	0	45 (3)	0	15	1	5 (2)	138 (7)	1 (1)

Cases in care recipients (deaths)

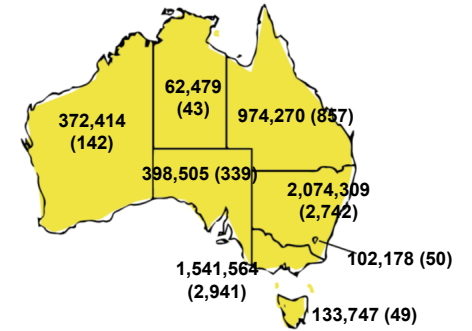
CASES BY AGE GROUP AND SEX



DEATHS BY AGE GROUP AND SEX

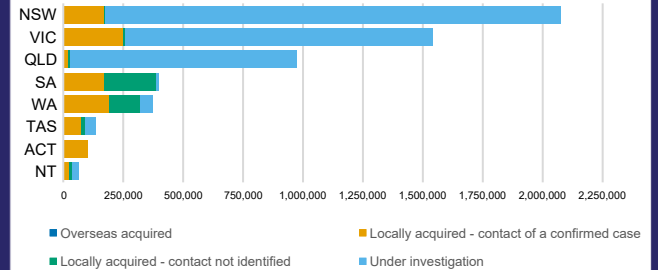


CASES (DEATHS) BY STATE AND TERRITORIES



CASES BY SOURCE OF INFECTION

Australia (% of all confirmed cases)



PUBLIC HEALTH RESPONSE MEASURE

Proportion of total cases under investigation

