



**CURRENT STATUS OF CONFIRMED CASES**



**131**



| ACT | NSW | NT | QLD | SA | TAS | VIC | WA |
|-----|-----|----|-----|----|-----|-----|----|
| 3   | 64  | 1  | 12  | 11 | 1   | 30  | 9  |

**3,131**



| ACT | NSW   | NT | QLD | SA  | TAS | VIC | WA  |
|-----|-------|----|-----|-----|-----|-----|-----|
| 61  | 1,631 | 51 | 430 | 247 | 43  | 428 | 240 |

**68,869,840**

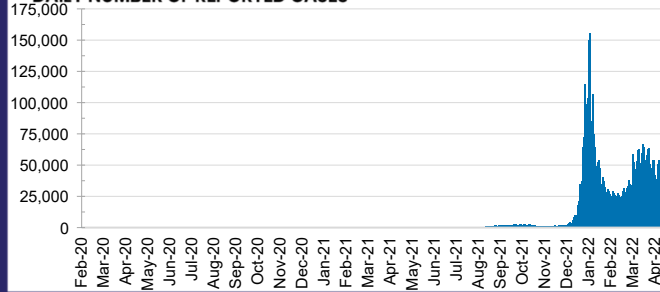


**TOTAL TESTS  
REPORTED**

| ACT       | NSW        | NT      | QLD       |
|-----------|------------|---------|-----------|
| 1,045,915 | 30,879,427 | 762,538 | 7,290,671 |

| SA        | TAS     | VIC        | WA        |
|-----------|---------|------------|-----------|
| 4,551,567 | 639,737 | 20,392,796 | 3,307,189 |

**DAILY NUMBER OF REPORTED CASES**

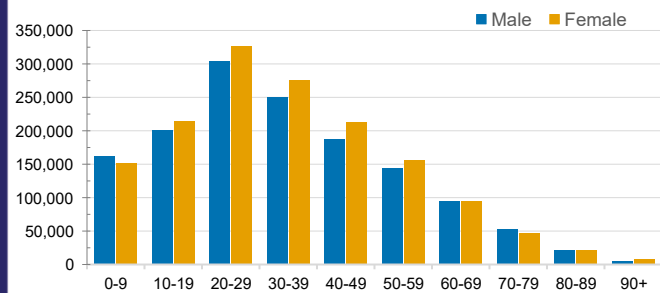


**CASES IN AGED CARE SERVICES**

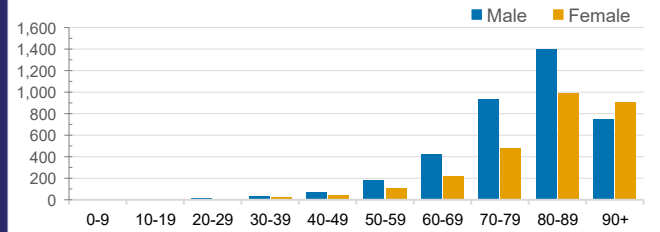
| Confirmed Cases             | Australia    | ACT      | NSW         | NT      | QLD        | SA         | TAS      | VIC        | WA        |
|-----------------------------|--------------|----------|-------------|---------|------------|------------|----------|------------|-----------|
| Residential Care Recipients | 31540 (2096) | 272 (18) | 11727 (685) | 104 (5) | 5516 (269) | 2292 (105) | 568 (16) | 9642 (953) | 1419 (45) |
| In Home Care Recipients     | 205 (13)     | 0        | 45 (3)      | 0       | 15         | 1          | 5 (2)    | 138 (7)    | 1 (1)     |

Cases in care recipients (deaths)

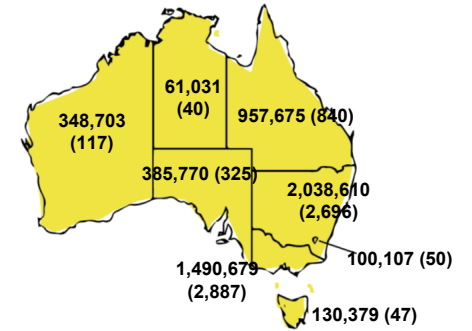
**CASES BY AGE GROUP AND SEX**



**DEATHS BY AGE GROUP AND SEX**

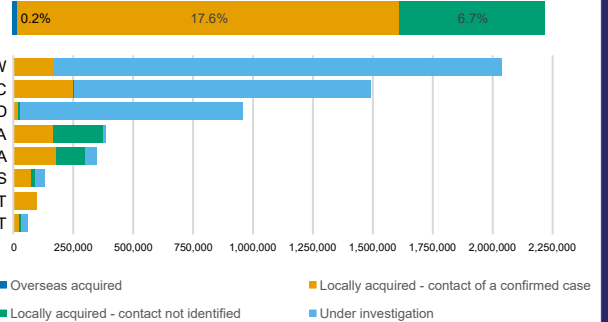


**CASES (DEATHS) BY STATE AND TERRITORIES**



**CASES BY SOURCE OF INFECTION**

Australia (% of all confirmed cases)



**PUBLIC HEALTH RESPONSE MEASURE**

Proportion of total cases under investigation

