



CURRENT STATUS OF CONFIRMED CASES



128



ACT	NSW	NT	QLD	SA	TAS	VIC	WA
2	60	2	15	12	0	30	7

3,189



ACT	NSW	NT	QLD	SA	TAS	VIC	WA
55	1,617	47	513	237	44	428	248

68,784,763

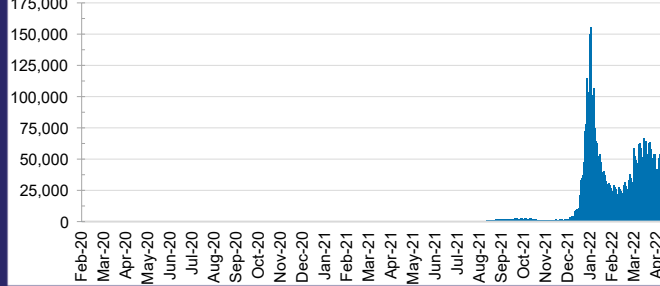


**TOTAL TESTS
REPORTED**

ACT	NSW	NT	QLD
1,042,942	30,827,242	761,562	7,279,889

SA	TAS	VIC	WA
4,535,183	637,960	20,392,796	3,307,189

DAILY NUMBER OF REPORTED CASES

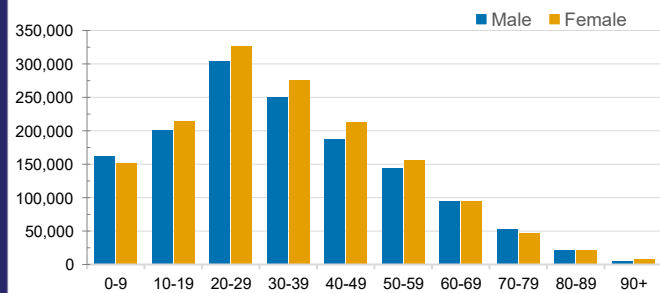


CASES IN AGED CARE SERVICES

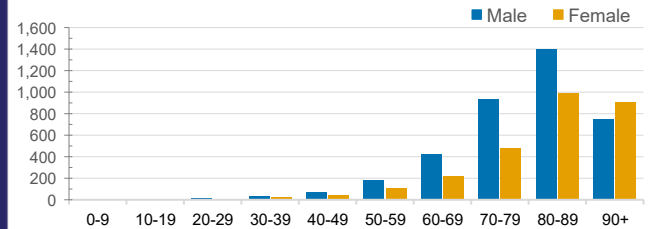
Confirmed Cases	Australia	ACT	NSW	NT	QLD	SA	TAS	VIC	WA
Residential Care Recipients	31540 (2096)	272 (18)	11727 (685)	104 (5)	5516 (269)	2292 (105)	568 (16)	9642 (953)	1419 (45)
In Home Care Recipients	205 (13)	0	45 (3)	0	15	1	5 (2)	138 (7)	1 (1)

Cases in care recipients (deaths)

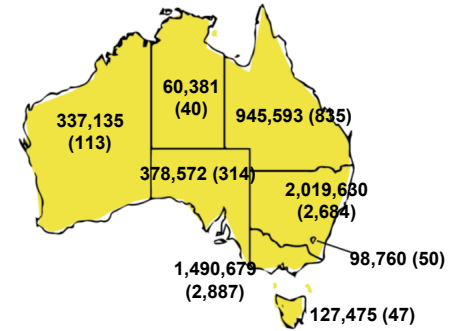
CASES BY AGE GROUP AND SEX



DEATHS BY AGE GROUP AND SEX

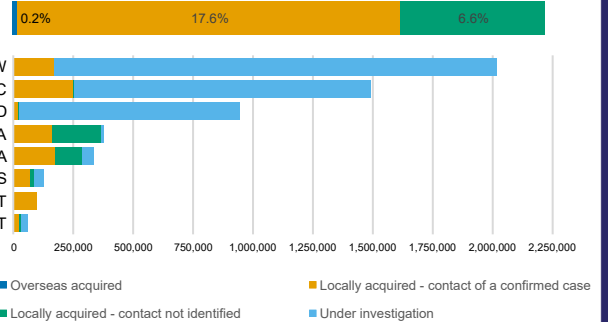


CASES (DEATHS) BY STATE AND TERRITORIES



CASES BY SOURCE OF INFECTION

Australia (% of all confirmed cases)



PUBLIC HEALTH RESPONSE MEASURE

Proportion of total cases under investigation

