



CURRENT STATUS OF CONFIRMED CASES



134



ACT	NSW	NT	QLD	SA	TAS	VIC	WA
2	63	1	18	10	1	30	9

3,236



ACT	NSW	NT	QLD	SA	TAS	VIC	WA
57	1,632	46	528	246	41	428	258

68,725,615

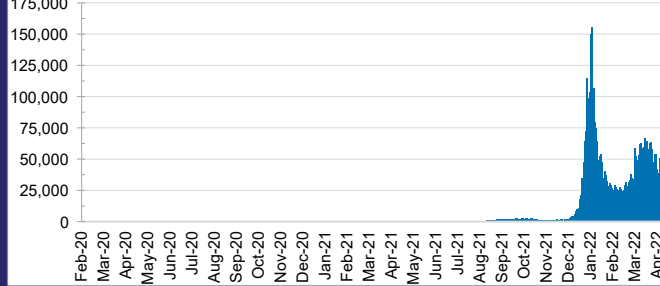


TOTAL TESTS REPORTED

ACT	NSW	NT	QLD
1,040,171	30,794,827	760,376	7,270,118

SA	TAS	VIC	WA
4,523,637	636,501	20,392,796	3,307,189

DAILY NUMBER OF REPORTED CASES

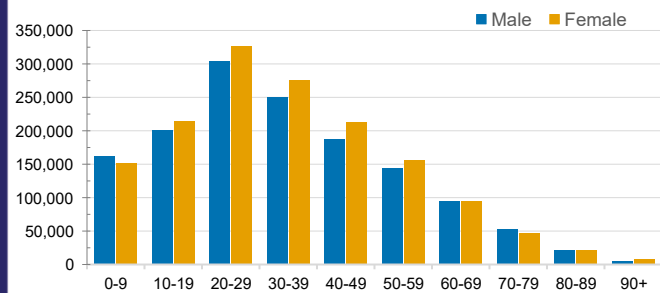


CASES IN AGED CARE SERVICES

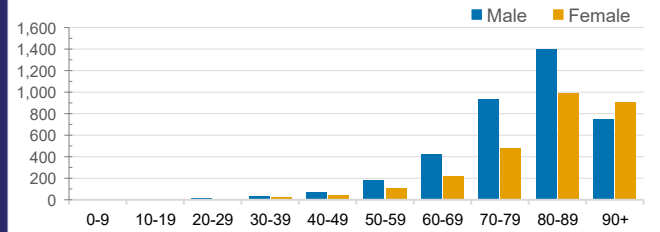
Confirmed Cases	Australia	ACT	NSW	NT	QLD	SA	TAS	VIC	WA
Residential Care Recipients	31540 (2096)	272 (18)	11727 (685)	104 (5)	5516 (269)	2292 (105)	568 (16)	9642 (953)	1419 (45)
In Home Care Recipients	205 (13)	0	45 (3)	0	15	1	5 (2)	138 (7)	1 (1)

Cases in care recipients (deaths)

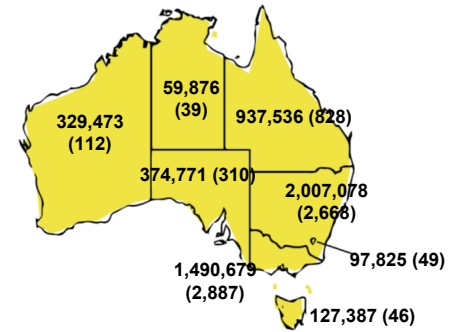
CASES BY AGE GROUP AND SEX



DEATHS BY AGE GROUP AND SEX

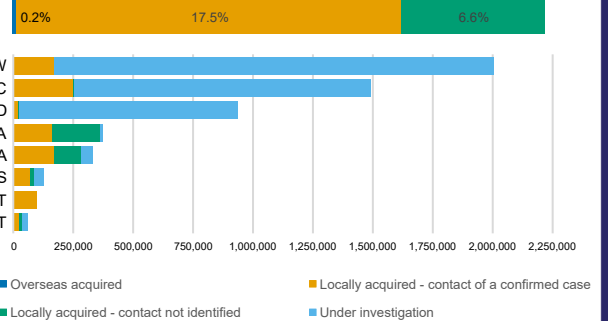


CASES (DEATHS) BY STATE AND TERRITORIES



CASES BY SOURCE OF INFECTION

Australia (% of all confirmed cases)



PUBLIC HEALTH RESPONSE MEASURE

Proportion of total cases under investigation

