



### CURRENT STATUS OF CONFIRMED CASES

5,374,402

Total cases

6,893

Total deaths

370,228

Active cases

146

CURRENT CASES  
INTENSIVE CARE UNITS (ICU)

ACT	NSW	NT	QLD	SA	TAS	VIC	WA
3	69	1	17	11	1	35	9

3,312

CURRENT CASES  
ADMITTED TO HOSPITALS

ACT	NSW	NT	QLD	SA	TAS	VIC	WA
61	1,641	41	578	241	58	444	248

68,626,642

TOTAL TESTS  
REPORTED

ACT	NSW	NT	QLD
1,037,722	30,754,118	759,199	7,260,427

SA	TAS	VIC	WA
4,512,427	634,724	20,373,828	3,294,197

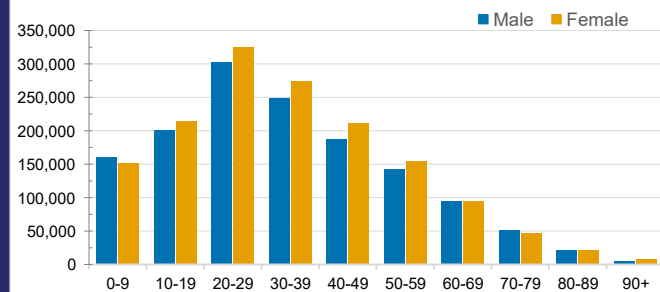
### DAILY NUMBER OF REPORTED CASES



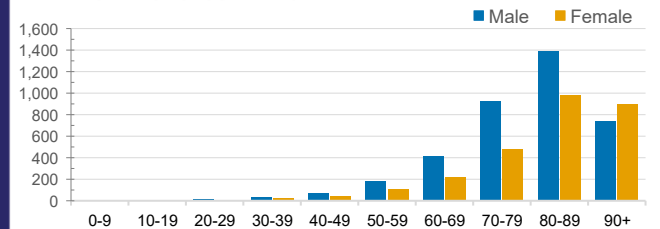
### CASES IN AGED CARE SERVICES

Confirmed Cases	Australia	ACT	NSW	NT	QLD	SA	TAS	VIC	WA
Residential Care Recipients	31109 (2085)	262 (18)	11626 (682)	104 (5)	5448 (266)	2233 (103)	562 (16)	9517 (951)	1357 (44)
In Home Care Recipients	205 (13)	0	45 (3)	0	15	1	5 (2)	138 (7)	1 (1)
Cases in care recipients (deaths)									

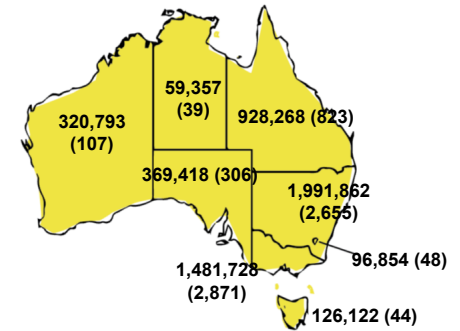
### CASES BY AGE GROUP AND SEX



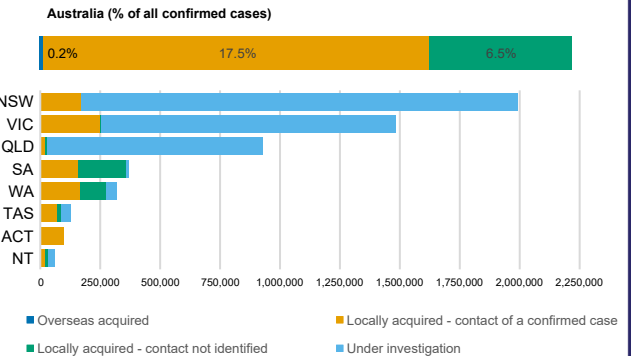
### DEATHS BY AGE GROUP AND SEX



### CASES (DEATHS) BY STATE AND TERRITORIES



### CASES BY SOURCE OF INFECTION



### PUBLIC HEALTH RESPONSE MEASURE

