



CURRENT STATUS OF CONFIRMED CASES



161



ACT	NSW	NT	QLD	SA	TAS	VIC	WA
2	72	2	25	14	2	34	10

3,329



ACT	NSW	NT	QLD	SA	TAS	VIC	WA
63	1,639	44	594	252	56	437	244

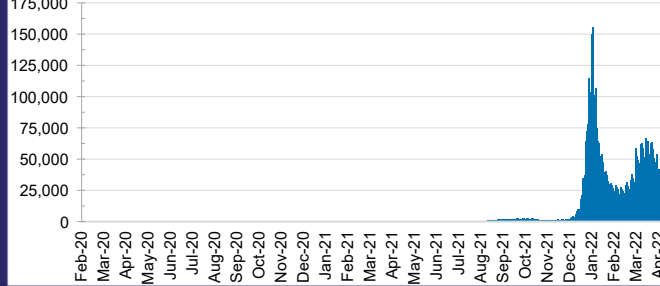
68,521,092



ACT	NSW	NT	QLD
1,035,328	30,711,751	758,345	7,251,076

SA	TAS	VIC	WA
4,499,433	632,804	20,353,228	3,279,127

DAILY NUMBER OF REPORTED CASES

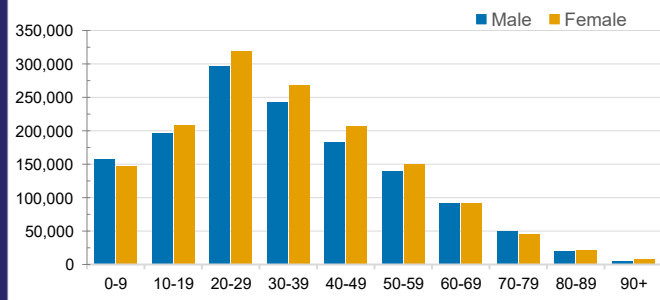


CASES IN AGED CARE SERVICES

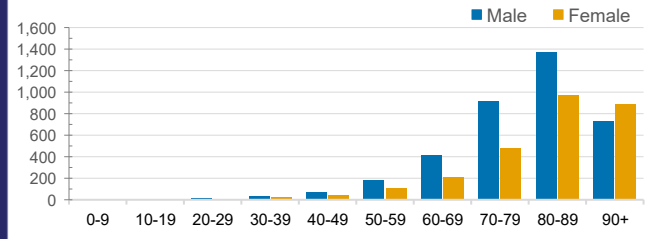
Confirmed Cases	Australia	ACT	NSW	NT	QLD	SA	TAS	VIC	WA
Residential Care Recipients	30477 (2065)	259 (18)	11466 (675)	104 (4)	5347 (265)	2175 (102)	549 (14)	9283 (946)	1294 (41)
In Home Care Recipients	205 (13)	0	45 (3)	0	15	1	5 (2)	138 (7)	1 (1)

Cases in care recipients (deaths)

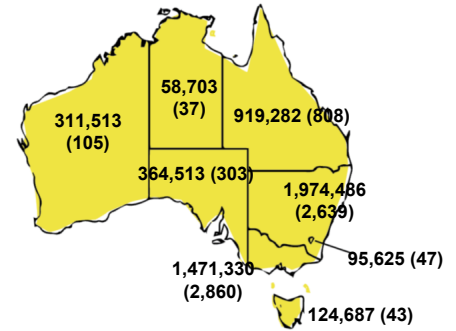
CASES BY AGE GROUP AND SEX



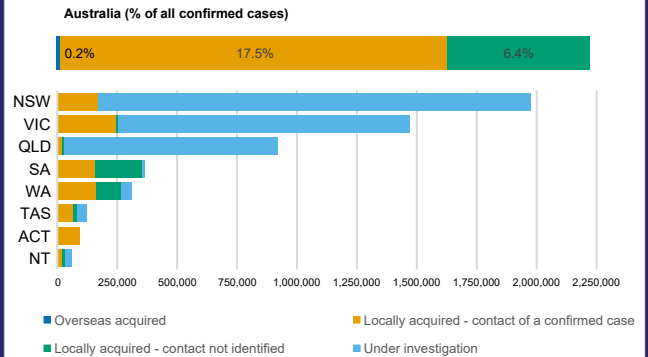
DEATHS BY AGE GROUP AND SEX



CASES (DEATHS) BY STATE AND TERRITORIES



CASES BY SOURCE OF INFECTION



PUBLIC HEALTH RESPONSE MEASURE

