



CURRENT STATUS OF CONFIRMED CASES



95



ACT	NSW	NT	QLD	SA	TAS	VIC	WA
2	47	1	15	8	1	15	6



2,522

ACT	NSW	NT	QLD	SA	TAS	VIC	WA
43	1,302	14	422	184	36	306	215

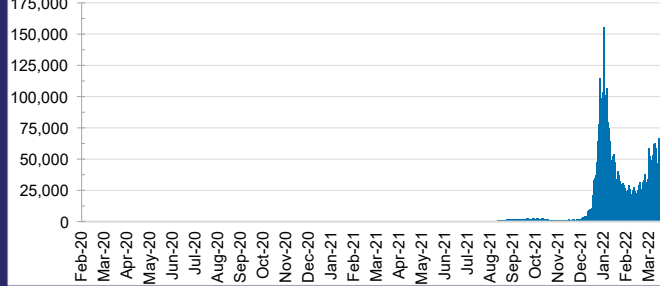
66,773,424



ACT	NSW	NT	QLD
990,207	29,999,038	743,572	7,110,852

SA	TAS	VIC	WA
4,261,412	606,262	20,025,277	3,036,804

DAILY NUMBER OF REPORTED CASES

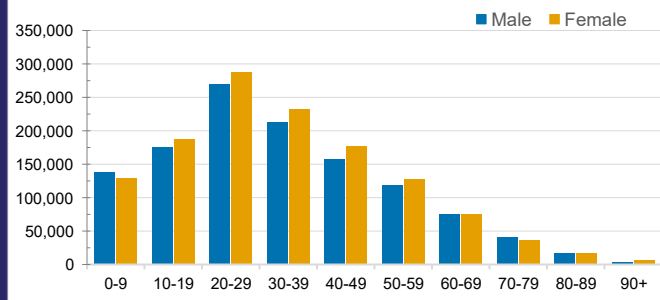


CASES IN AGED CARE SERVICES

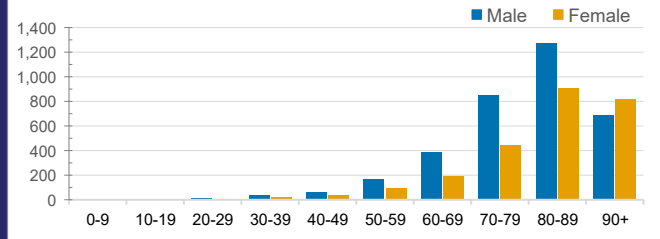
Confirmed Cases	Australia	ACT	NSW	NT	QLD	SA	TAS	VIC	WA
Residential Care Recipients	24102 (1934)	234 (15)	9253 (614)	96 (4)	4334 (242)	1549 (90)	232 (8)	7583 (936)	821 (25)
In Home Care Recipients	205 (13)	0	45 (3)	0	15	1	5 (2)	138 (7)	1 (1)

Cases in care recipients (deaths)

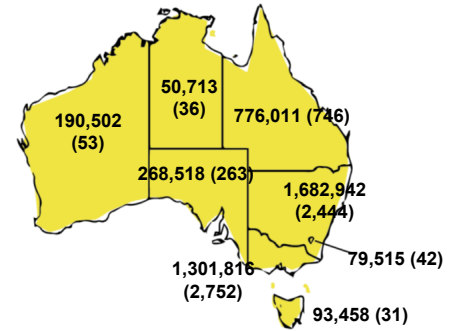
CASES BY AGE GROUP AND SEX



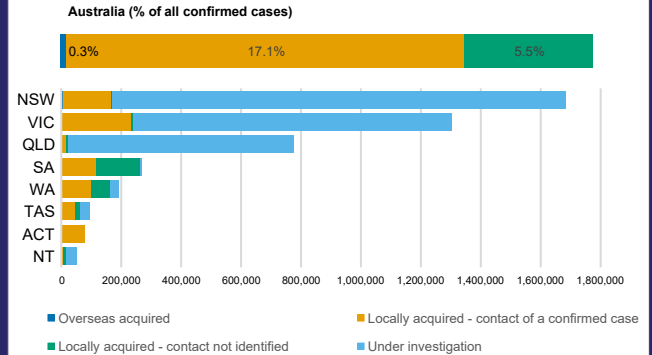
DEATHS BY AGE GROUP AND SEX



CASES (DEATHS) BY STATE AND TERRITORIES



CASES BY SOURCE OF INFECTION



PUBLIC HEALTH RESPONSE MEASURE

