



**CURRENT STATUS OF CONFIRMED CASES**



**144**



ACT	NSW	NT	QLD	SA	TAS	VIC	WA
2	70	3	20	11	1	31	6

**3,276**



ACT	NSW	NT	QLD	SA	TAS	VIC	WA
64	1,623	43	564	245	47	443	247

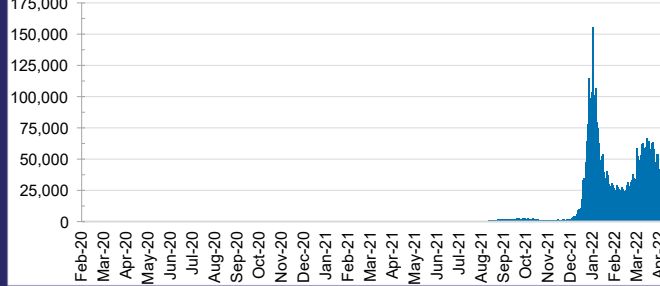
**68,438,949**



ACT	NSW	NT	QLD
1,032,711	30,683,553	757,350	7,245,058

SA	TAS	VIC	WA
4,487,420	631,524	20,337,360	3,263,973

**DAILY NUMBER OF REPORTED CASES**

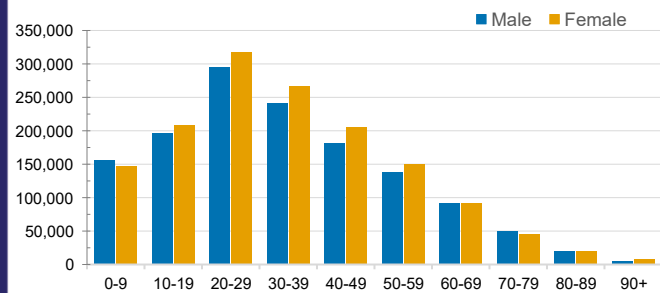


**CASES IN AGED CARE SERVICES**

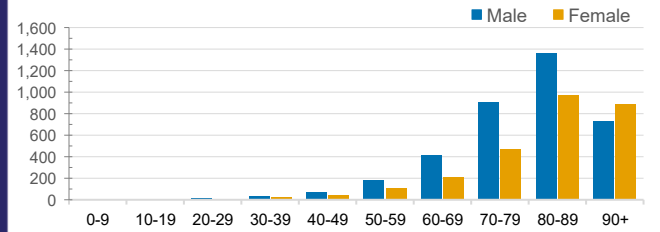
Confirmed Cases	Australia	ACT	NSW	NT	QLD	SA	TAS	VIC	WA
Residential Care Recipients	29670 (2051)	259 (19)	11194 (667)	102 (4)	5116 (260)	2113 (102)	534 (13)	9088 (945)	1264 (41)
In Home Care Recipients	205 (13)	0	45 (3)	0	15	1	5 (2)	138 (7)	1 (1)

Cases in care recipients (deaths)

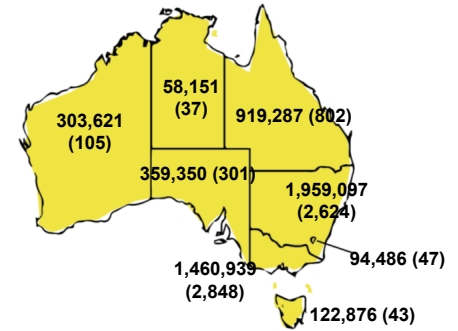
**CASES BY AGE GROUP AND SEX**



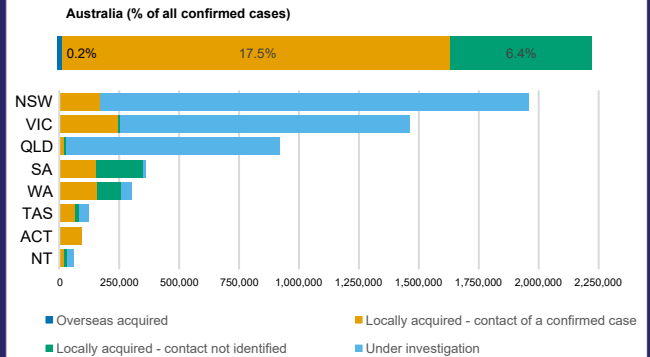
**DEATHS BY AGE GROUP AND SEX**



**CASES (DEATHS) BY STATE AND TERRITORIES**



**CASES BY SOURCE OF INFECTION**



**PUBLIC HEALTH RESPONSE MEASURE**

