



CURRENT STATUS OF CONFIRMED CASES



131



ACT	NSW	NT	QLD	SA	TAS	VIC	WA
2	67	2	19	13	1	21	6



3,150

ACT	NSW	NT	QLD	SA	TAS	VIC	WA
58	1,576	30	551	261	44	403	227

68,318,362

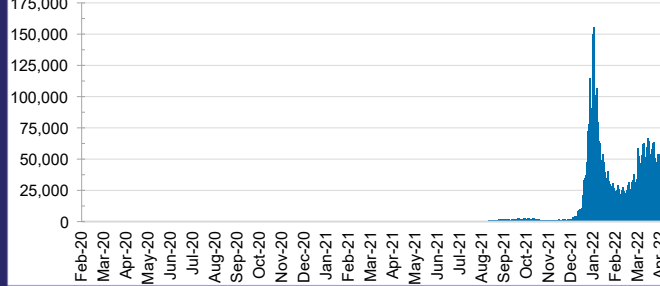


TOTAL TESTS REPORTED

ACT	NSW	NT	QLD
1,030,928	30,662,695	756,953	7,241,381

SA	TAS	VIC	WA
4,477,070	630,304	20,300,305	3,218,726

DAILY NUMBER OF REPORTED CASES

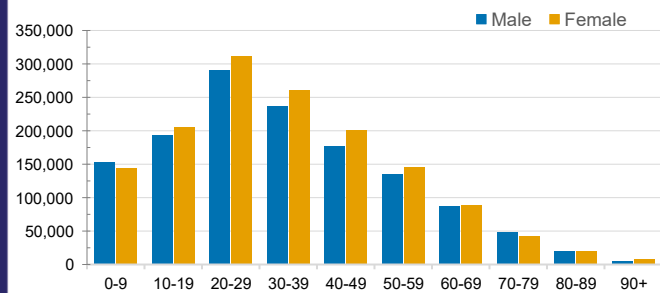


CASES IN AGED CARE SERVICES

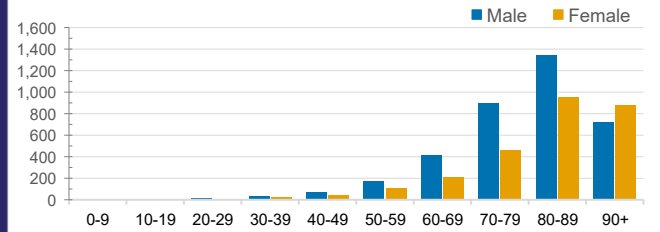
Confirmed Cases	Australia	ACT	NSW	NT	QLD	SA	TAS	VIC	WA
Residential Care Recipients	28485 (2024)	259 (19)	10820 (655)	100 (4)	4988 (258)	1938 (99)	471 (10)	8740 (943)	1169 (36)
In Home Care Recipients	205 (13)	0	45 (3)	0	15	1	5 (2)	138 (7)	1 (1)

Cases in care recipients (deaths)

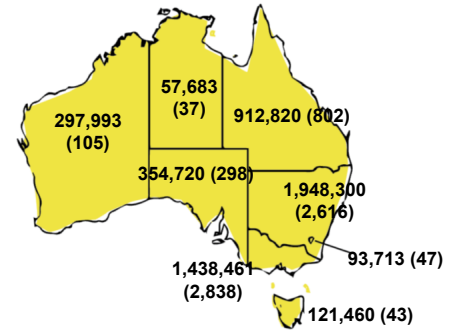
CASES BY AGE GROUP AND SEX



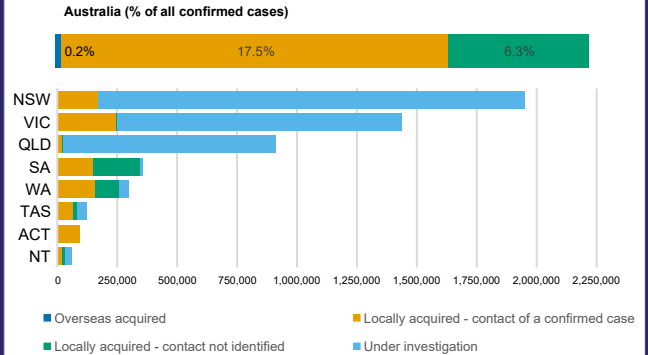
DEATHS BY AGE GROUP AND SEX



CASES (DEATHS) BY STATE AND TERRITORIES



CASES BY SOURCE OF INFECTION



PUBLIC HEALTH RESPONSE MEASURE

