



CURRENT STATUS OF CONFIRMED CASES



124



ACT	NSW	NT	QLD	SA	TAS	VIC	WA
0	64	0	19	12	1	21	7

3,012



ACT	NSW	NT	QLD	SA	TAS	VIC	WA
0	1,527	27	563	225	47	403	220

68,277,469

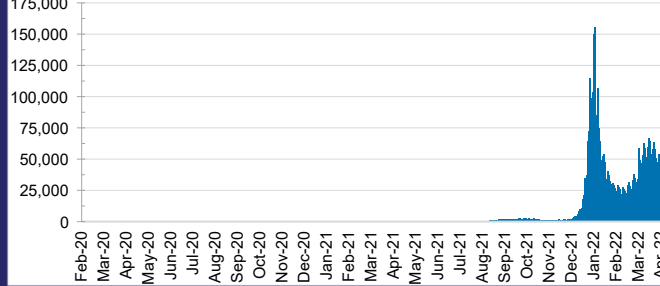


**TOTAL TESTS
REPORTED**

ACT	NSW	NT	QLD
1,029,451	30,638,085	756,558	7,236,961

SA	TAS	VIC	WA
4,467,692	629,691	20,300,305	3,218,726

DAILY NUMBER OF REPORTED CASES

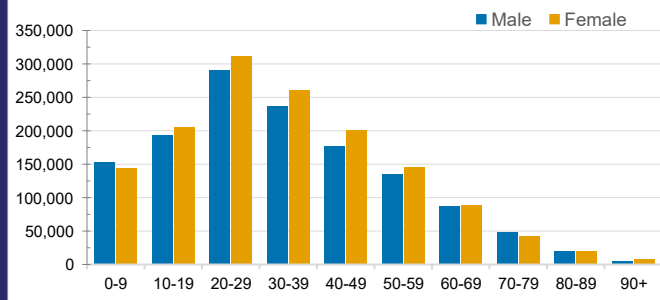


CASES IN AGED CARE SERVICES

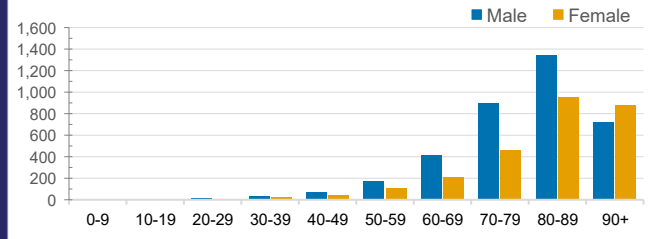
Confirmed Cases	Australia	ACT	NSW	NT	QLD	SA	TAS	VIC	WA
Residential Care Recipients	28485 (2024)	259 (19)	10820 (655)	100 (4)	4988 (258)	1938 (99)	471 (10)	8740 (943)	1169 (36)
In Home Care Recipients	205 (13)	0	45 (3)	0	15	1	5 (2)	138 (7)	1 (1)

Cases in care recipients (deaths)

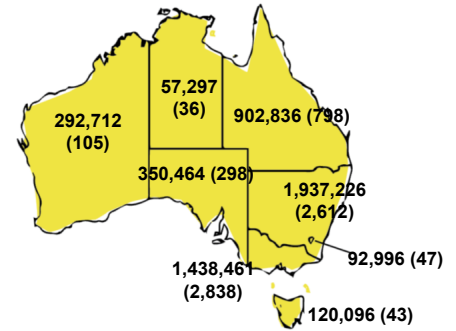
CASES BY AGE GROUP AND SEX



DEATHS BY AGE GROUP AND SEX

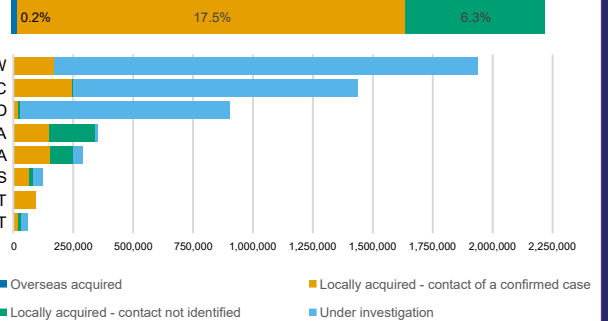


CASES (DEATHS) BY STATE AND TERRITORIES



CASES BY SOURCE OF INFECTION

Australia (% of all confirmed cases)



PUBLIC HEALTH RESPONSE MEASURE

Proportion of total cases under investigation

