



**CURRENT STATUS OF CONFIRMED CASES**



**88**



ACT	NSW	NT	QLD	SA	TAS	VIC	WA
2	43	3	14	7	0	12	7



ACT	NSW	NT	QLD	SA	TAS	VIC	WA
46	1,345	19	403	169	30	310	211

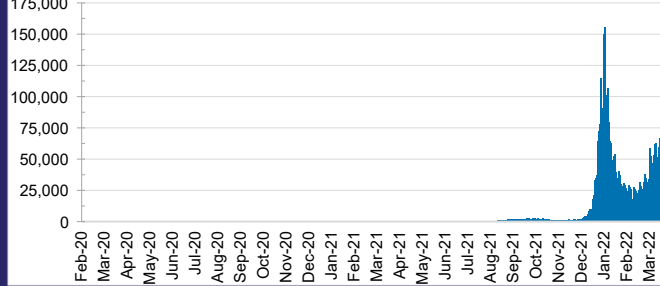
**66,680,026**



ACT	NSW	NT	QLD
988,380	29,955,528	743,285	7,100,393

SA	TAS	VIC	WA
4,246,526	603,531	20,005,579	3,036,804

**DAILY NUMBER OF REPORTED CASES**

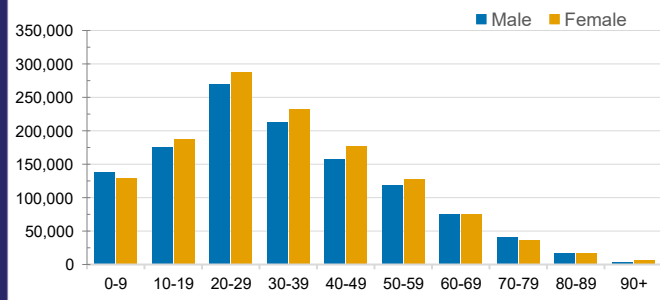


**CASES IN AGED CARE SERVICES**

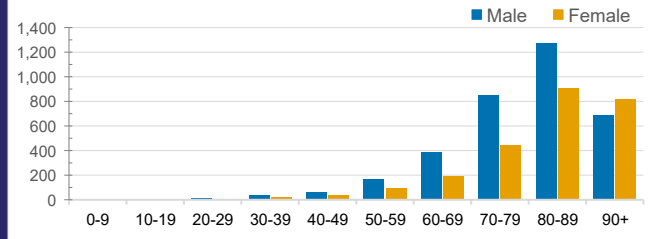
Confirmed Cases	Australia	ACT	NSW	NT	QLD	SA	TAS	VIC	WA
Residential Care Recipients	24102 (1934)	234 (15)	9253 (614)	96 (4)	4334 (242)	1549 (90)	232 (8)	7583 (936)	821 (25)
In Home Care Recipients	205 (13)	0	45 (3)	0	15	1	5 (2)	138 (7)	1 (1)

Cases in care recipients (deaths)

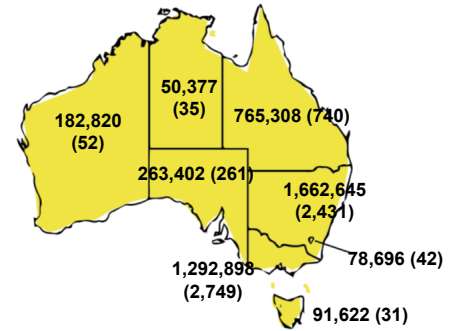
**CASES BY AGE GROUP AND SEX**



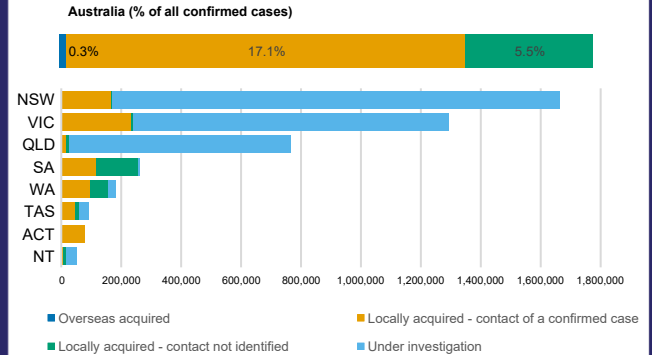
**DEATHS BY AGE GROUP AND SEX**



**CASES (DEATHS) BY STATE AND TERRITORIES**



**CASES BY SOURCE OF INFECTION**



**PUBLIC HEALTH RESPONSE MEASURE**

