



Australian Government

Operation COVID Shield

COVID-19 Vaccine Roll-out Jurisdictional Breakdowns

28 March 2022

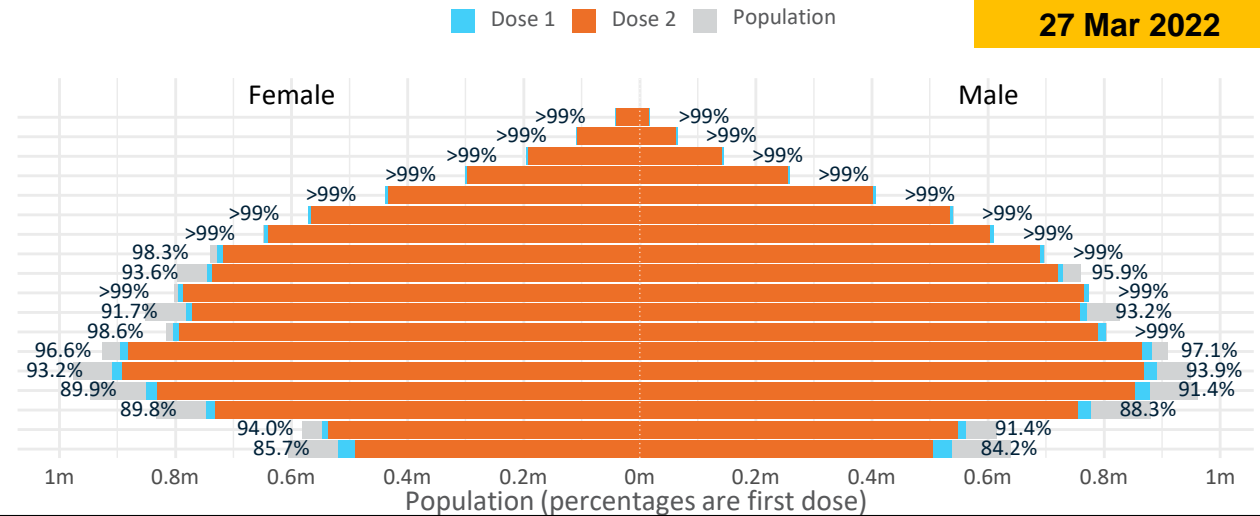
Doses by age and sex

First and second doses by age and sex

Data as at:
27 Mar 2022

	16+	50+	12-15	5-11
Dose 1	96.75% (19,950,701 doses / 20,619,959 people)	>99% (8,818,919 doses / 8,749,703 people)	84.92% (1,056,414 doses / 1,243,990 people)	52.11% (1,186,361 doses / 2,276,638 people)
Dose 2	95.06% (19,601,978 doses / 20,619,959 people)	>99% (8,707,642 doses / 8,749,703 people)	79.93% (994,350 doses / 1,243,990 people)	24.47% (557,044 doses / 2,276,638 people)

Age	Dose 1	Dose 2
95+	60,174 (>99%)	56,764 (>99%)
90-94	174,650 (>99%)	168,826 (>99%)
85-89	340,165 (>99%)	332,887 (>99%)
80-84	559,054 (>99%)	551,380 (>99%)
75-79	844,657 (>99%)	835,908 (>99%)
70-74	1,111,577 (>99%)	1,100,249 (>99%)
65-69	1,258,558 (>99%)	1,243,914 (98.9%)
60-64	1,424,953 (>99%)	1,408,105 (98.0%)
55-59	1,474,850 (94.8%)	1,457,502 (93.7%)
50-54	1,570,281 (>99%)	1,552,107 (>99%)
45-49	1,551,716 (92.5%)	1,531,572 (91.3%)
40-44	1,609,846 (>99%)	1,584,053 (97.8%)
35-39	1,782,217 (97.1%)	1,748,468 (95.3%)
30-34	1,808,411 (94.0%)	1,765,099 (91.8%)
25-29	1,739,351 (91.2%)	1,690,831 (88.7%)
20-24	1,530,862 (89.4%)	1,490,610 (87.1%)
16-19	1,109,379 (92.8%)	1,083,703 (90.6%)
12-15	1,056,414 (84.9%)	994,350 (79.9%)



	AUS	ACT	NSW	NT	QLD	SA	TAS	VIC	WA
16 and over - dose 1	19,950,701	351,523	6,303,231	174,339	3,841,584	1,369,702	443,345	5,142,772	2,083,791
16 and over - dose 2	19,601,978	346,104	6,208,146	169,485	3,770,778	1,337,869	433,702	5,066,441	2,045,660
16 and over - population	20,619,959*	344,037	6,565,651	190,571	4,112,707	1,440,400	440,172	5,407,574	2,114,978
16 and over % with dose 1	96.75%	>99%	96.00%	91.48%	93.41%	95.09%	>99%	95.10%	98.53%
16 and over % with dose 2	95.06%	>99%	94.55%	88.94%	91.69%	92.88%	98.53%	93.69%	96.72%
5 to 11 - dose 1	1,186,361	31,727	353,048	13,078	207,636	83,759	28,393	323,625	137,732
5 to 11 - dose 2	557,044	19,299	172,793	5,293	98,362	40,437	16,659	148,936	52,830
5 to 11 - population	2,276,638	39,789	716,460	24,750	478,731	148,816	45,033	578,499	244,154
5 to 11 % with dose 1	52.11%	79.74%	49.28%	52.84%	43.37%	56.28%	63.05%	55.94%	56.41%
5 to 11 % with dose 2	24.47%	48.50%	24.12%	21.39%	20.55%	27.17%	36.99%	25.75%	21.64%
12 to 15 - dose 1	1,056,414	20,077	325,685	10,909	207,563	68,511	22,916	276,148	115,412
12 to 15 - dose 2	994,350	19,368	309,916	9,760	193,360	64,465	21,690	262,857	104,972
12 to 15 - population	1,243,990	19,693	390,330	13,060	270,146	82,747	26,308	308,611	132,869
12 to 15 % with dose 1	84.92%	>99%	83.44%	83.53%	76.83%	82.80%	87.11%	89.48%	86.86%
12 to 15 % with dose 2	79.93%	98.35%	79.40%	74.73%	71.58%	77.91%	82.45%	85.17%	79.00%

*National population will not equal sum of listed jurisdictions due to a small number of people counted in national population residing in some 'other' territories. Sum of state doses will not add to national total as some records are unable to be geocoded to a State or Territory. Doses sourced from Australian Immunisation Register, population from ABS ERP June 2020

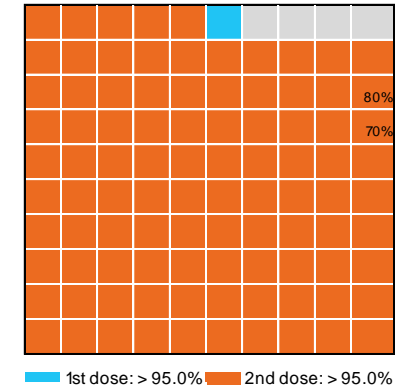
Vaccinations by State – National Summary

Data as at:
27 Mar 2022

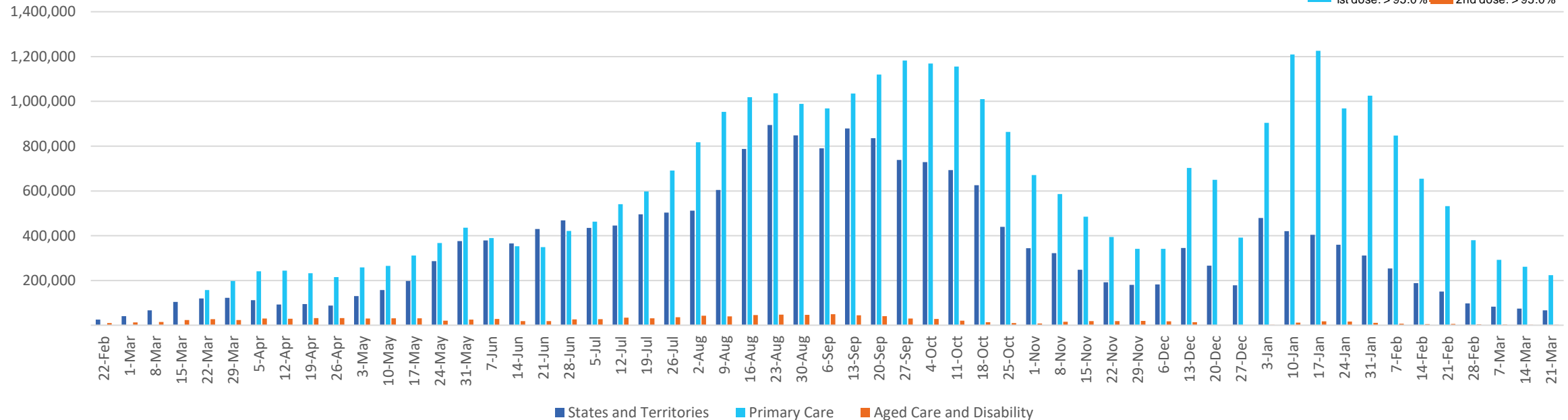
Past 7 days

	21/03/2022	22/03/2022	23/03/2022	24/03/2022	25/03/2022	26/03/2022	27/03/2022	7 day total
State and Territory	19,221	17,992	17,760	18,558	20,023	27,354	17,695	138,603
Aged Care and Disability	184	362	565	608	259	481	481	2,940
Primary Care	68,629	66,010	54,552	61,306	66,244	32,987	12,241	361,969
Total (rounded)	88 K	84 K	73 K	80 K	87 K	61 K	30 K	504 K

Eligible population by % coverage



Doses administered by channel

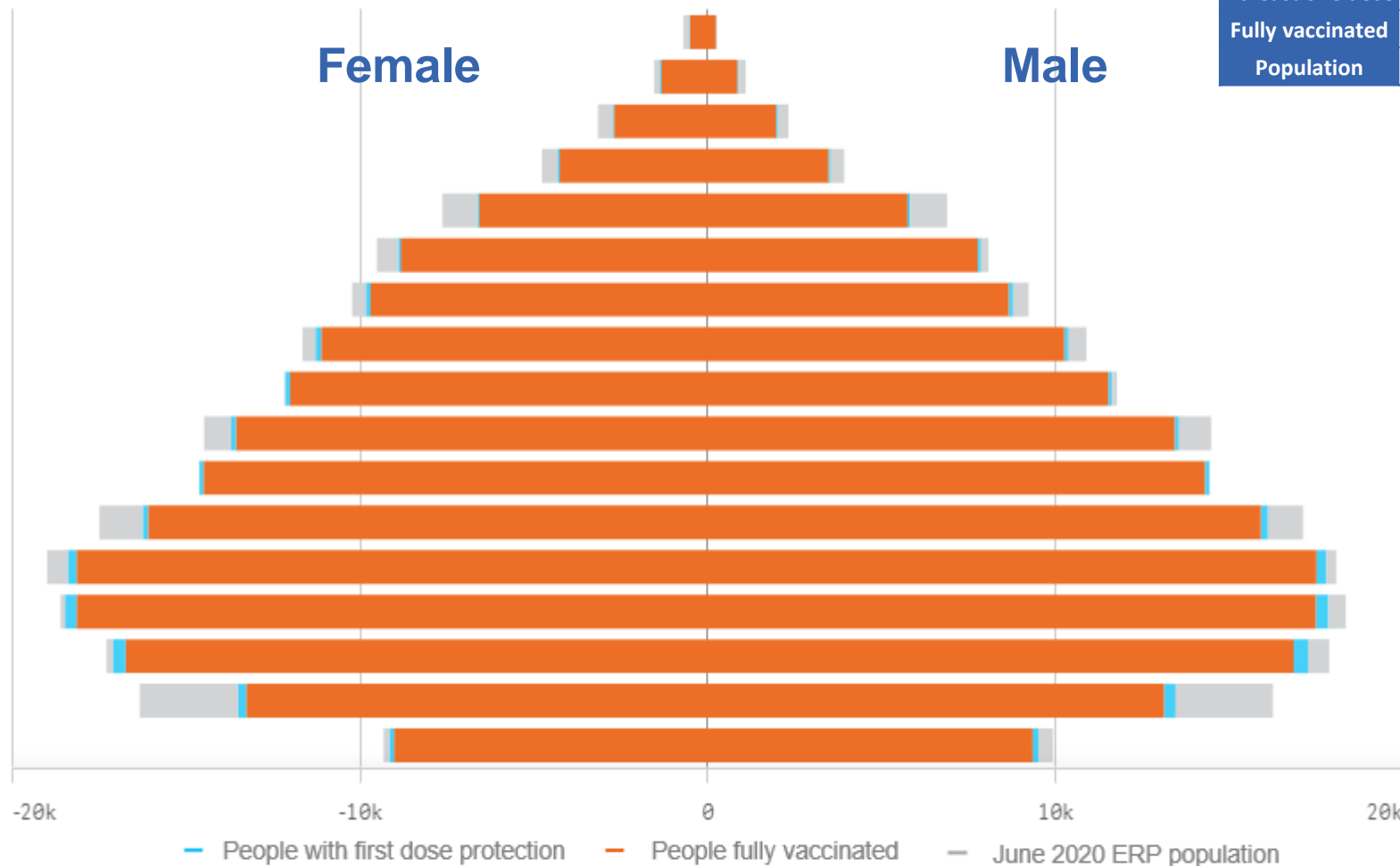


*Administration state breakdown indicates state in which a vaccine was administered and may differ to residential state. Recent weeks may be understated.

Data as at:
27 Mar 2022

Vaccinations by State or Territory of residence

Australian Capital Territory



	16+	50+	70+
At least one dose	>95% 351,523	>95% 136,582	>95% 45,011
Fully vaccinated	>95% 346,104	>95% 134,865	>95% 44,380
Population	344,037	127,802	39,946

Age	At least one dose	Fully vaccinated
95+	>95%	>95%
90-94	>95%	>95%
85-89	>95%	>95%
80-84	>95%	>95%
75-79	>95%	>95%
70-74	>95%	>95%
65-69	>95%	>95%
60-64	>95%	>95%
55-59	>95%	>95%
50-54	>95%	>95%
45-49	>95%	>95%
40-44	>95%	>95%
35-39	>95%	>95%
30-34	>95%	>95%
25-29	>95%	>95%
20-24	83.25%	81.36%
16-19	>95%	>95%

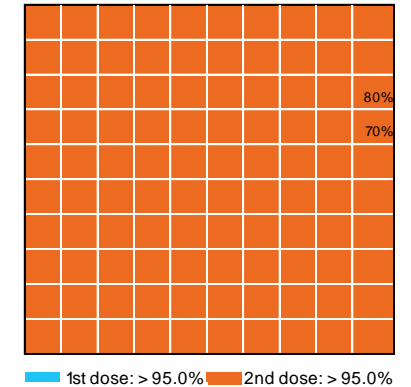
Vaccinations by State – Australian Capital Territory

Data as at:
27 Mar 2022

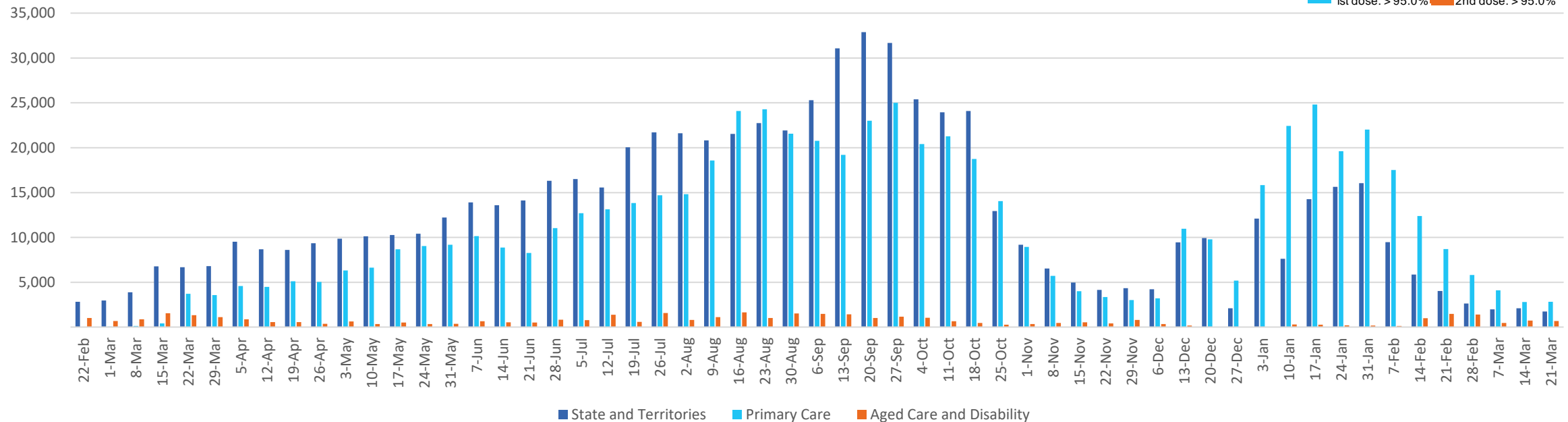
Past 7 days

	21/03/2022	22/03/2022	23/03/2022	24/03/2022	25/03/2022	26/03/2022	27/03/2022	7 day total
State and Territory	2,101	2,118	1,845	1,903	1,745	1,273	846	11,831
Aged Care and Disability	<10	41	185	157	79	113	133	709
Primary Care	890	1,051	918	577	964	718	311	5,429
Total (rounded)	3 K	3 K	3 K	3 K	3 K	2 K	1 K	18 K

Eligible population by % coverage



Doses administered by channel



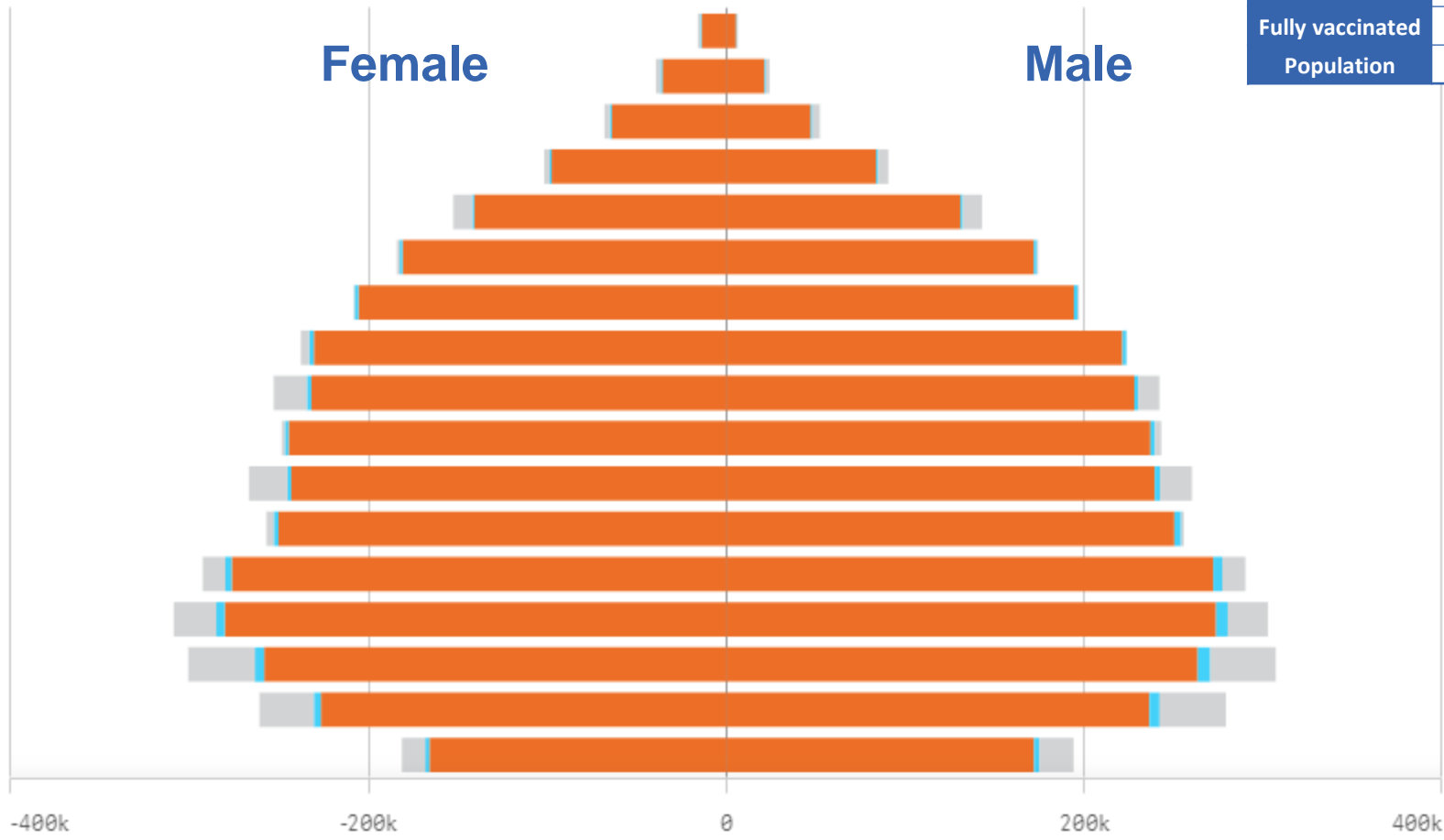
*Administration state breakdown indicates state in which a vaccine was administered and may differ to residential state. Recent weeks may be understated.

Data as at:
27 Mar 2022

Vaccinations by State or Territory of residence

New South Wales

	16+	50+	70+
At least one dose	>95% 6,303,231	>95% 2,823,039	>95% 1,007,697
Fully vaccinated	94.55% 6,208,146	>95% 2,789,772	>95% 994,298
Population	6,565,651	2,807,793	962,606



— People with first dose protection — People fully vaccinated — June 2020 ERP population

Age	At least one dose	Fully vaccinated
95+	>95%	>95%
90-94	>95%	>95%
85-89	>95%	>95%
80-84	>95%	>95%
75-79	>95%	>95%
70-74	>95%	>95%
65-69	>95%	>95%
60-64	>95%	>95%
55-59	94.02%	92.99%
50-54	>95%	>95%
45-49	92.67%	91.66%
40-44	>95%	>95%
35-39	>95%	94.38%
30-34	92.92%	90.97%
25-29	88.43%	86.28%
20-24	87.90%	86.00%
16-19	91.51%	90.07%

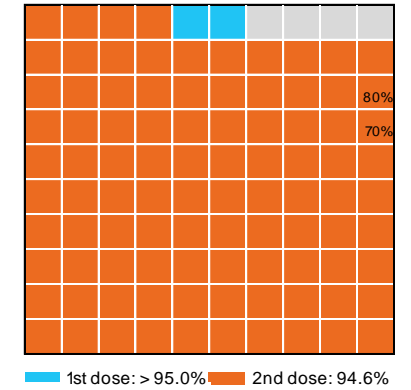
Vaccinations by State – New South Wales

Data as at:
27 Mar 2022

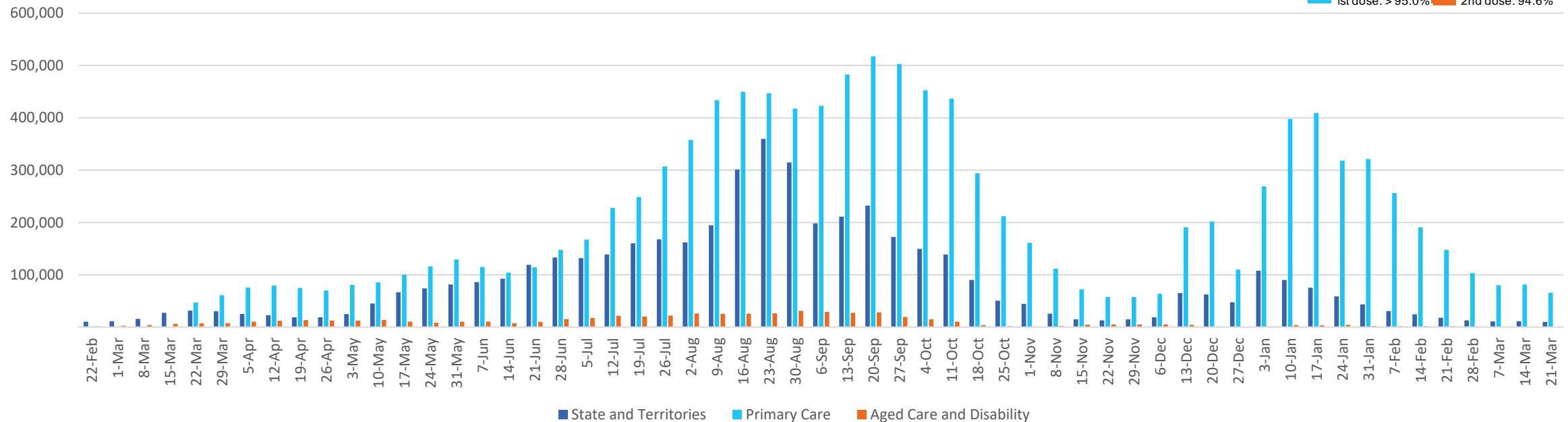
Past 7 days

	21/03/2022	22/03/2022	23/03/2022	24/03/2022	25/03/2022	26/03/2022	27/03/2022	7 day total
State and Territory	3,440	2,975	2,569	3,762	3,681	5,553	3,296	25,276
Aged Care and Disability	29	101	82	113	43	65	51	484
Primary Care	21,634	21,040	16,244	18,715	21,421	10,060	3,157	112,271
Total (rounded)	25 K	24 K	19 K	23 K	25 K	16 K	7 K	138 K

Eligible population by % coverage



Doses administered by channel

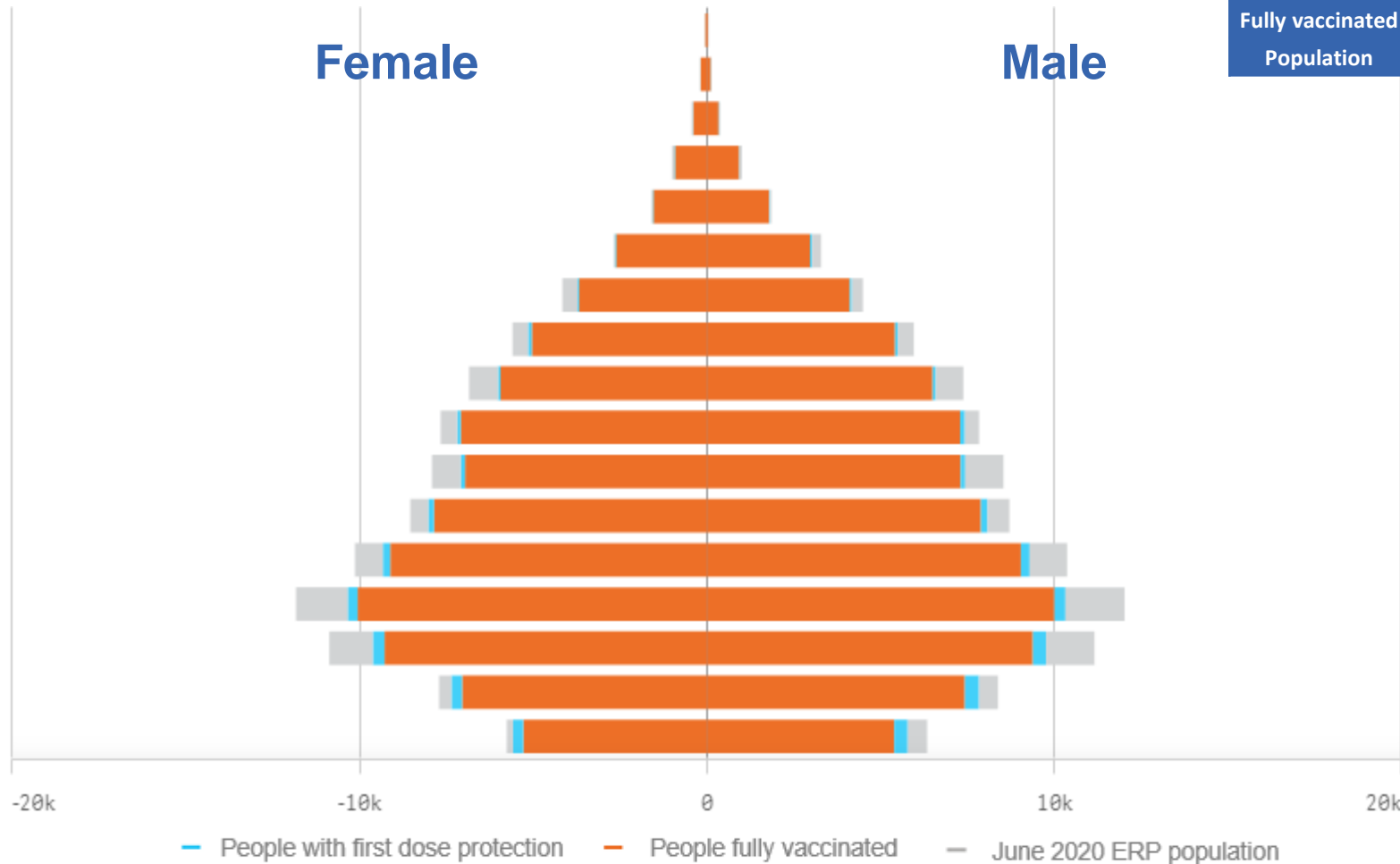


*Administration state breakdown indicates state in which a vaccine was administered and may differ to residential state. Recent weeks may be understated.

Data as at:
27 Mar 2022

Vaccinations by State or Territory of residence

Northern Territory



	16+		50+		70+	
At least one dose	91.48%	174,339	93.06%	57,960	>95%	12,110
Fully vaccinated	88.94%	169,485	91.55%	57,019	>95%	11,884
Population	190,571		62,280		12,343	

Age	At least one dose	Fully vaccinated
95+	88.66%	83.51%
90-94	>95%	91.33%
85-89	>95%	>95%
80-84	>95%	>95%
75-79	>95%	>95%
70-74	>95%	93.84%
65-69	91.52%	90.27%
60-64	92.29%	90.68%
55-59	88.71%	87.50%
50-54	94.48%	92.88%
45-49	88.47%	86.81%
40-44	93.63%	91.50%
35-39	91.13%	88.81%
30-34	87.30%	84.64%
25-29	88.71%	85.33%
20-24	94.72%	90.20%
16-19	93.95%	88.28%

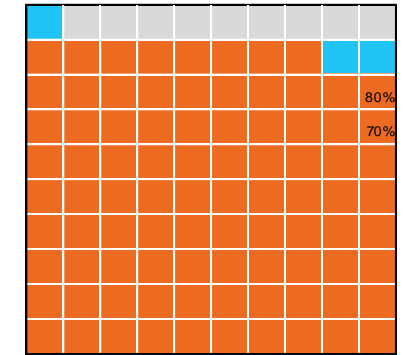
Vaccinations by State – Northern Territory

Data as at:
27 Mar 2022

Past 7 days

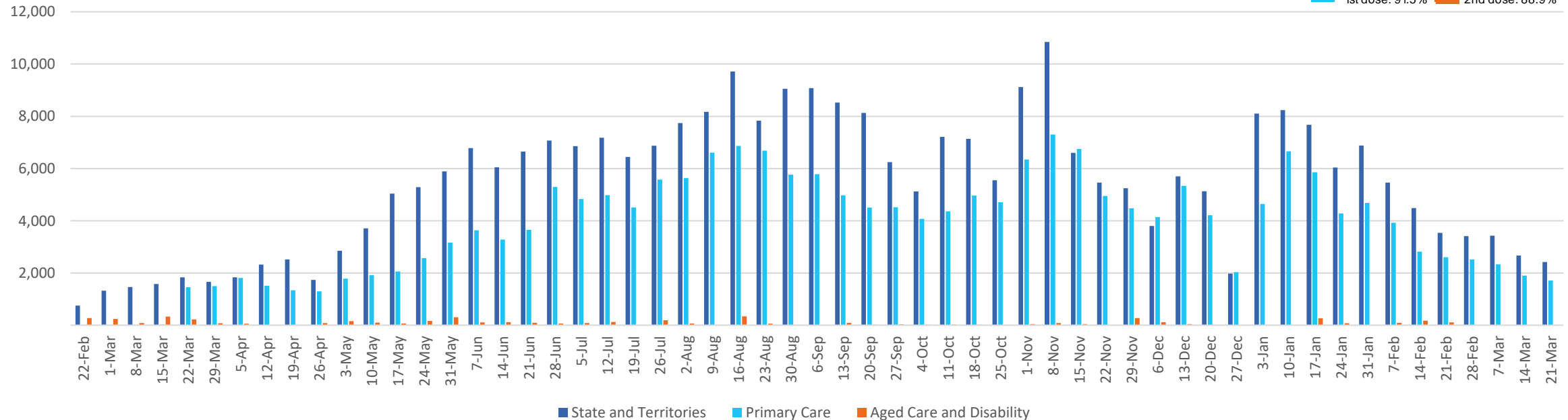
	21/03/2022	22/03/2022	23/03/2022	24/03/2022	25/03/2022	26/03/2022	27/03/2022	7 day total
State and Territory	654	508	591	672	616	505	322	3,868
Aged Care and Disability	<10	<10	<10	<10	<10	<10	<10	<10
Primary Care	302	422	529	498	446	88	10	2,295
Total (rounded)	1 K	1 K	1 K	1 K	1 K	1 K	0 K	6 K

Eligible population by % coverage



1st dose: 91.5% 2nd dose: 88.9%

Doses administered by channel



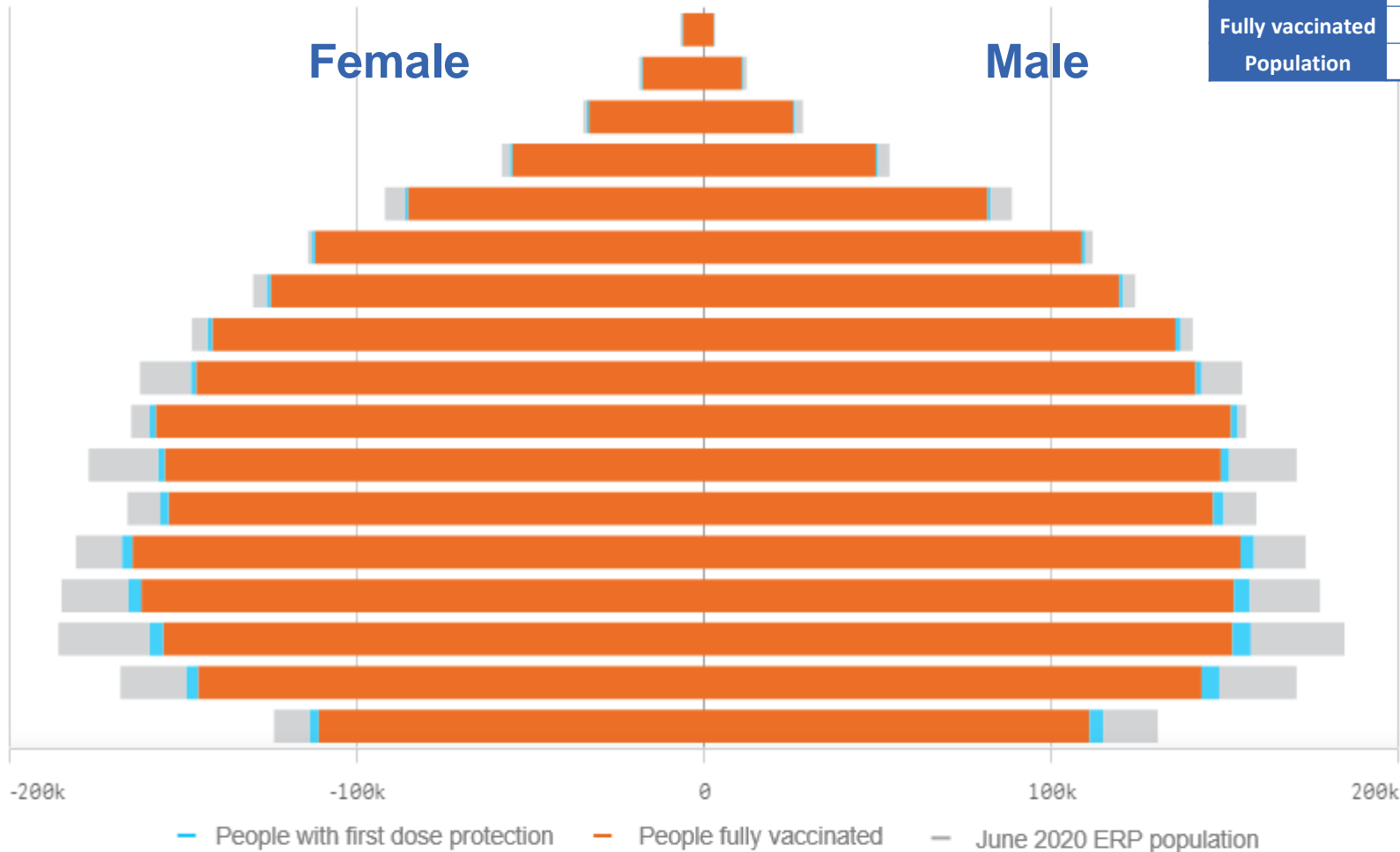
*Administration state breakdown indicates state in which a vaccine was administered and may differ to residential state. Recent weeks may be understated.

Data as at:
27 Mar 2022

Vaccinations by State or Territory of residence

Queensland

	16+	50+	70+
At least one dose	93.41% 3,841,584	>95% 1,729,487	>95% 597,171
Fully vaccinated	91.69% 3,770,778	>95% 1,709,363	>95% 589,281
Population	4,112,707	1,758,855	577,767



Age	At least one dose	Fully vaccinated
95+	>95%	>95%
90-94	>95%	>95%
85-89	>95%	>95%
80-84	>95%	>95%
75-79	>95%	>95%
70-74	>95%	>95%
65-69	>95%	>95%
60-64	>95%	>95%
55-59	91.75%	90.74%
50-54	>95%	>95%
45-49	88.72%	87.47%
40-44	94.31%	92.58%
35-39	92.25%	90.23%
30-34	89.42%	87.04%
25-29	86.02%	83.41%
20-24	88.03%	85.48%
16-19	89.87%	87.26%

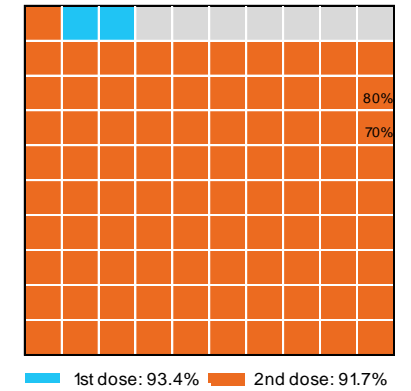
Vaccinations by State – Queensland

Data as at:
27 Mar 2022

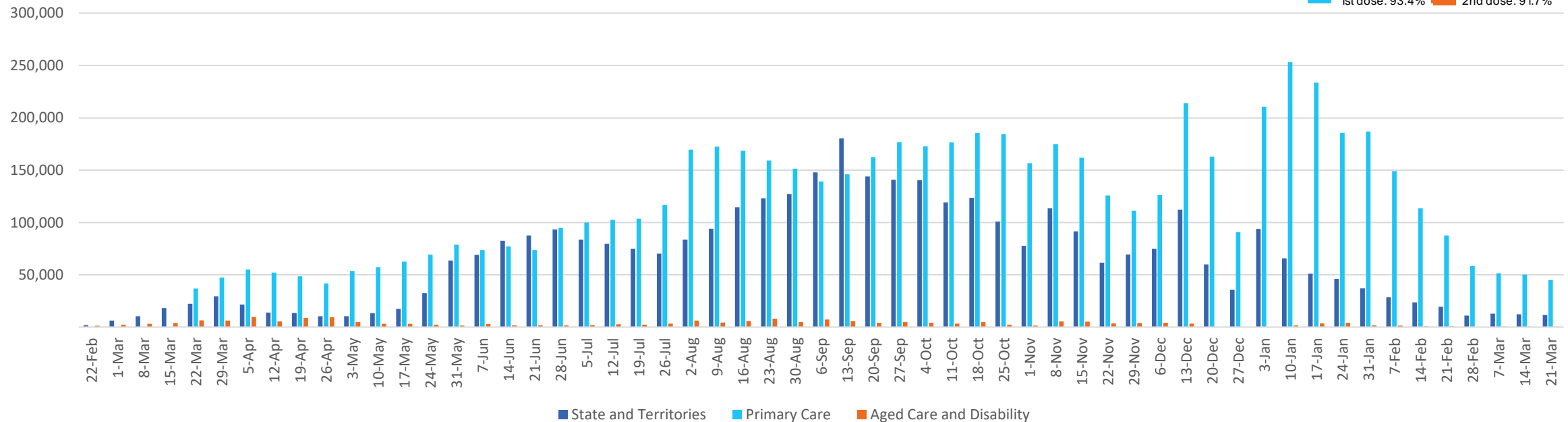
Past 7 days

	21/03/2022	22/03/2022	23/03/2022	24/03/2022	25/03/2022	26/03/2022	27/03/2022	7 day total
State and Territory	2,064	2,840	2,687	2,608	3,216	5,061	2,325	20,801
Aged Care and Disability	18	54	171	221	24	267	270	1,025
Primary Care	12,254	12,807	10,563	11,828	12,558	4,903	2,479	67,392
Total (rounded)	14 K	16 K	13 K	15 K	16 K	10 K	5 K	89 K

Eligible population by % coverage



Doses administered by channel

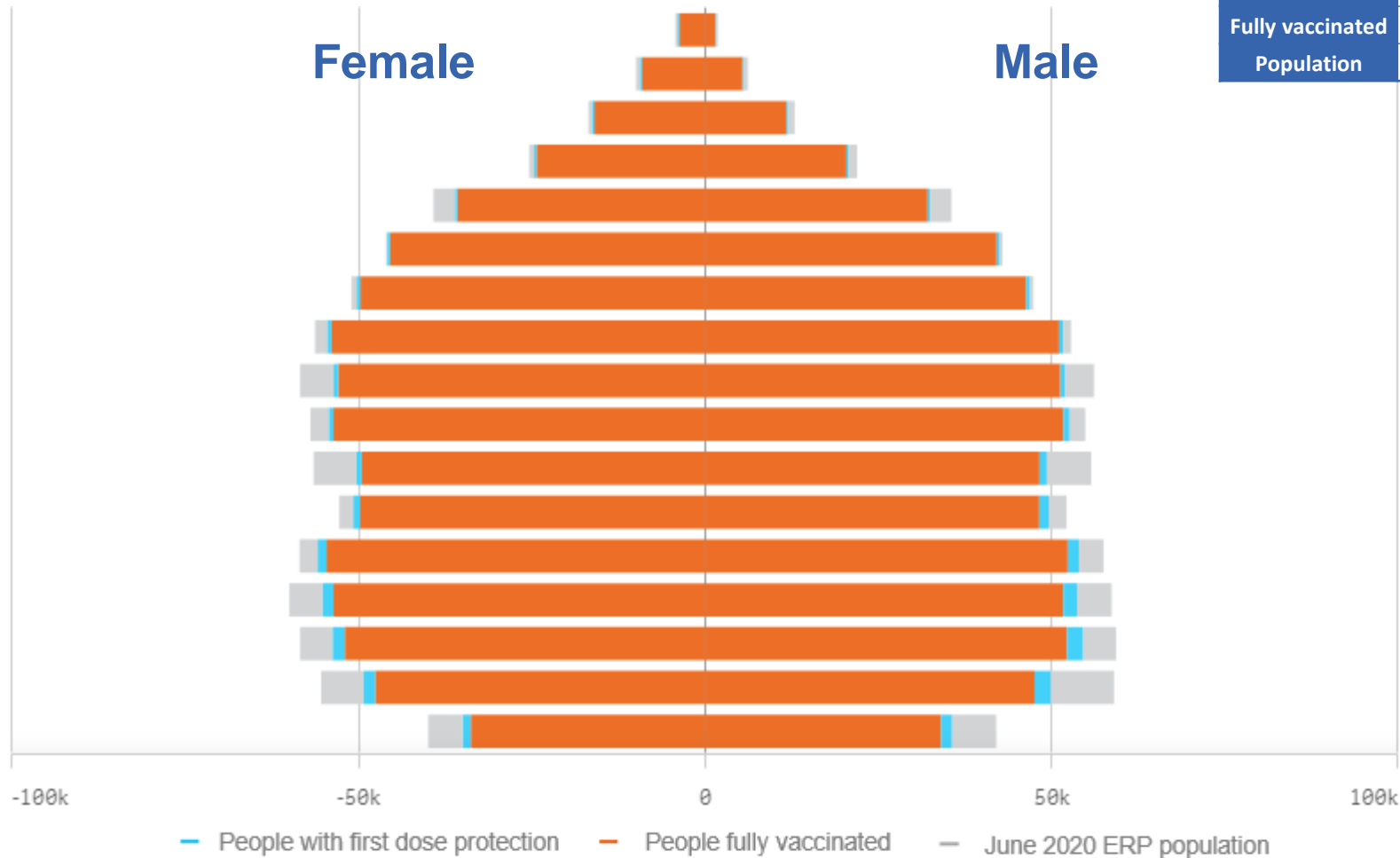


*Administration state breakdown indicates state in which a vaccine was administered and may differ to residential state. Recent weeks may be understated.

Data as at:
27 Mar 2022

Vaccinations by State or Territory of residence

South Australia



	16+	50+	70+
At least one dose	> 95% 1,369,702	>95% 668,173	>95% 251,659
Fully vaccinated	92.88% 1,337,869	>95% 658,864	>95% 247,799
Population	1,440,400	674,384	240,514

Age	At least one dose	Fully vaccinated
95+	>95%	>95%
90-94	>95%	>95%
85-89	>95%	>95%
80-84	>95%	>95%
75-79	>95%	>95%
70-74	>95%	>95%
65-69	>95%	>95%
60-64	>95%	>95%
55-59	92.31%	91.08%
50-54	>95%	94.25%
45-49	88.93%	87.27%
40-44	>95%	93.55%
35-39	>95%	92.54%
30-34	92.62%	89.41%
25-29	93.31%	89.56%
20-24	87.58%	83.88%
16-19	86.40%	82.93%

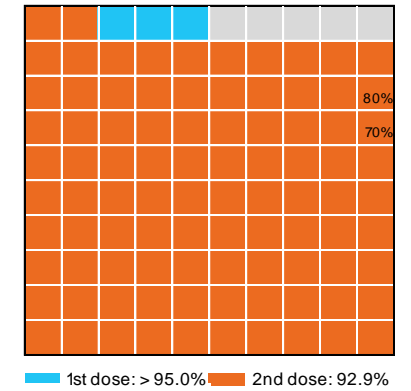
Vaccinations by State – South Australia

Data as at:
27 Mar 2022

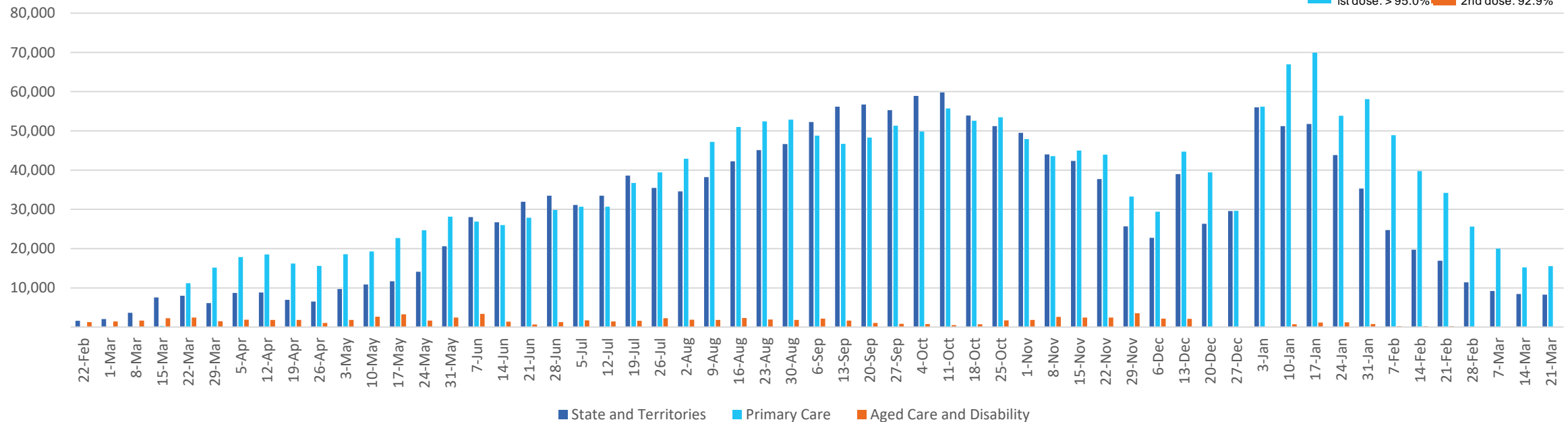
Past 7 days

	21/03/2022	22/03/2022	23/03/2022	24/03/2022	25/03/2022	26/03/2022	27/03/2022	7 day total
State and Territory	1,917	1,863	1,956	2,373	2,580	3,281	2,336	16,306
Aged Care and Disability	<10	<10	10	<10	<10	<10	<10	21
Primary Care	4,402	3,995	3,396	4,036	3,934	1,891	617	22,271
Total (rounded)	6 K	6 K	5 K	6 K	7 K	5 K	3 K	39 K

Eligible population by % coverage



Doses administered by channel

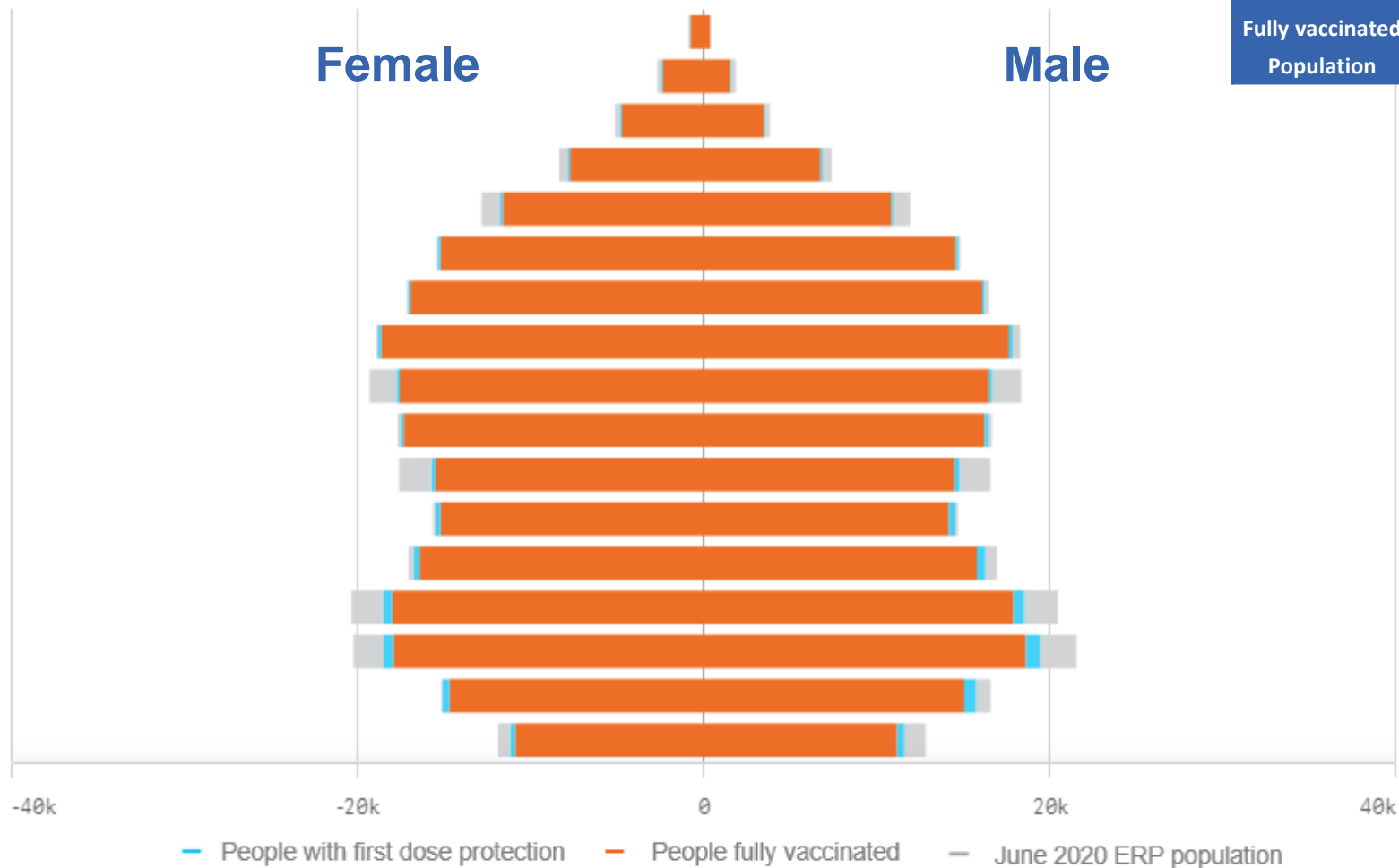


*Administration state breakdown indicates state in which a vaccine was administered and may differ to residential state. Recent weeks may be understated.

Data as at:
27 Mar 2022

Vaccinations by State or Territory of residence

Tasmania



	16+		50+		70+	
At least one dose	> 95%	443,345	>95%	219,883	>95%	81,320
Fully vaccinated	> 95%	433,702	>95%	217,148	>95%	80,109
Population	440,172		220,036		77,155	

Age	At least one dose	Fully vaccinated
95+	>95%	>95%
90-94	>95%	>95%
85-89	>95%	>95%
80-84	>95%	>95%
75-79	>95%	>95%
70-74	>95%	>95%
65-69	>95%	>95%
60-64	>95%	>95%
55-59	91.53%	90.50%
50-54	>95%	>95%
45-49	89.47%	87.89%
40-44	>95%	>95%
35-39	>95%	>95%
30-34	>95%	>95%
25-29	>95%	>95%
20-24	>95%	94.30%
16-19	92.40%	89.44%

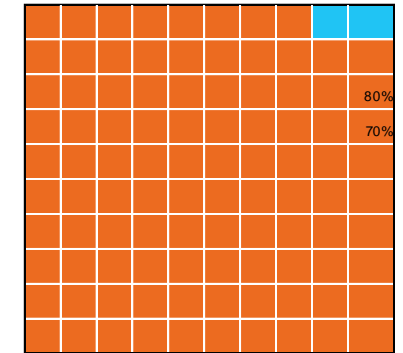
Vaccinations by State – Tasmania

Data as at: 27 Mar 2022

Past 7 days

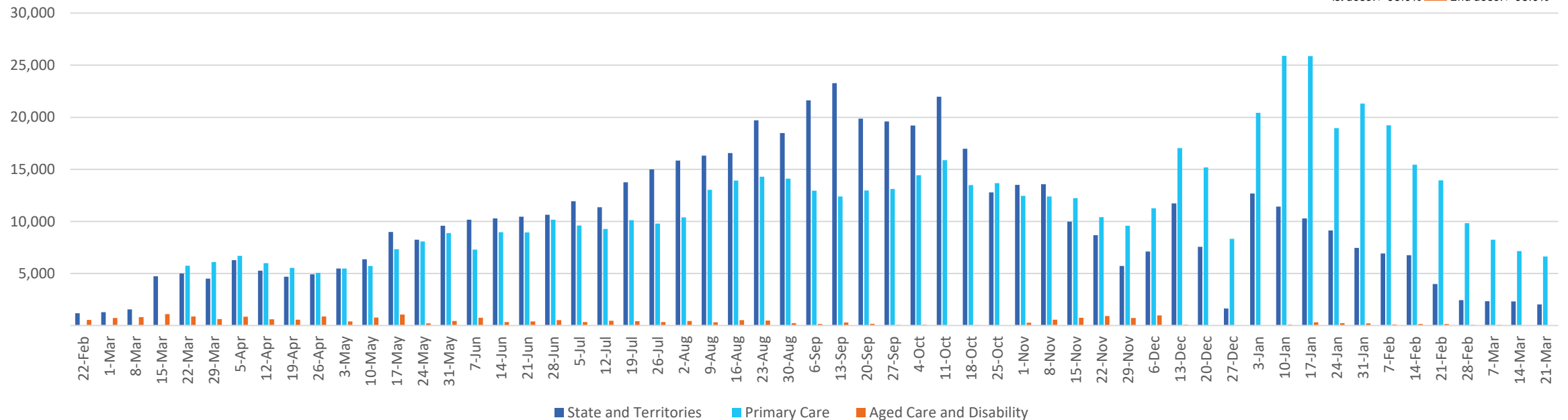
	21/03/2022	22/03/2022	23/03/2022	24/03/2022	25/03/2022	26/03/2022	27/03/2022	7 day total
State and Territory	1,721	566	1,075	258	592	424	2,046	6,682
Aged Care and Disability	<10	<10	<10	<10	19	<10	<10	22
Primary Care	1,701	1,721	1,381	1,588	1,571	439	128	8,529
Total (rounded)	3 K	2 K	2 K	2 K	2 K	1 K	2 K	15 K

Eligible population by % coverage



1st dose: > 95.0% 2nd dose: > 95.0%

Doses administered by channel

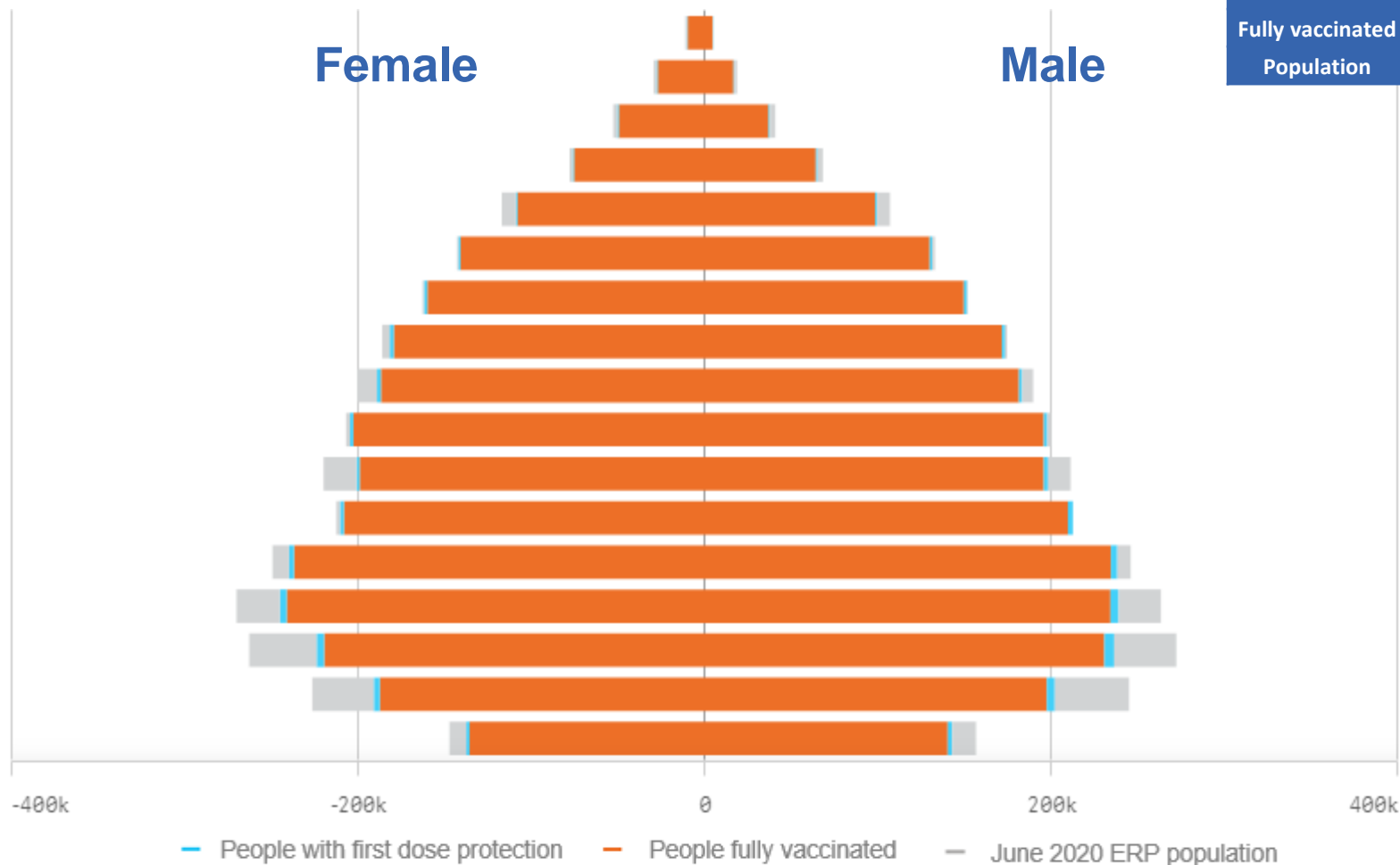


*Administration state breakdown indicates state in which a vaccine was administered and may differ to residential state. Recent weeks may be understated.

Data as at:
27 Mar 2022

Vaccinations by State or Territory of residence

Victoria



	16+		50+		70+	
At least one dose	> 95%	5,142,772	>95%	2,218,171	>95%	772,943
Fully vaccinated	93.69%	5,066,441	>95%	2,190,911	>95%	762,385
Population	5,407,574		2,211,211		743,519	

Age	At least one dose	Fully vaccinated
95+	>95%	>95%
90-94	>95%	>95%
85-89	>95%	>95%
80-84	>95%	>95%
75-79	>95%	>95%
70-74	>95%	>95%
65-69	>95%	>95%
60-64	>95%	>95%
55-59	>95%	94.43%
50-54	>95%	>95%
45-49	92.63%	91.65%
40-44	>95%	>95%
35-39	>95%	>95%
30-34	90.96%	89.26%
25-29	86.34%	84.38%
20-24	83.63%	81.82%
16-19	92.36%	90.86%

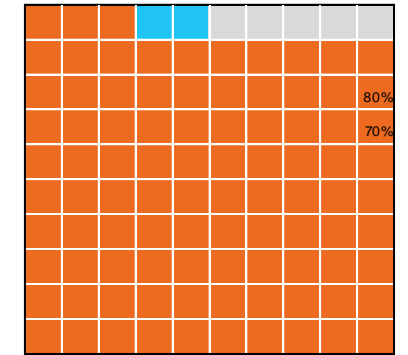
Vaccinations by State – Victoria

Data as at:
27 Mar 2022

Past 7 days

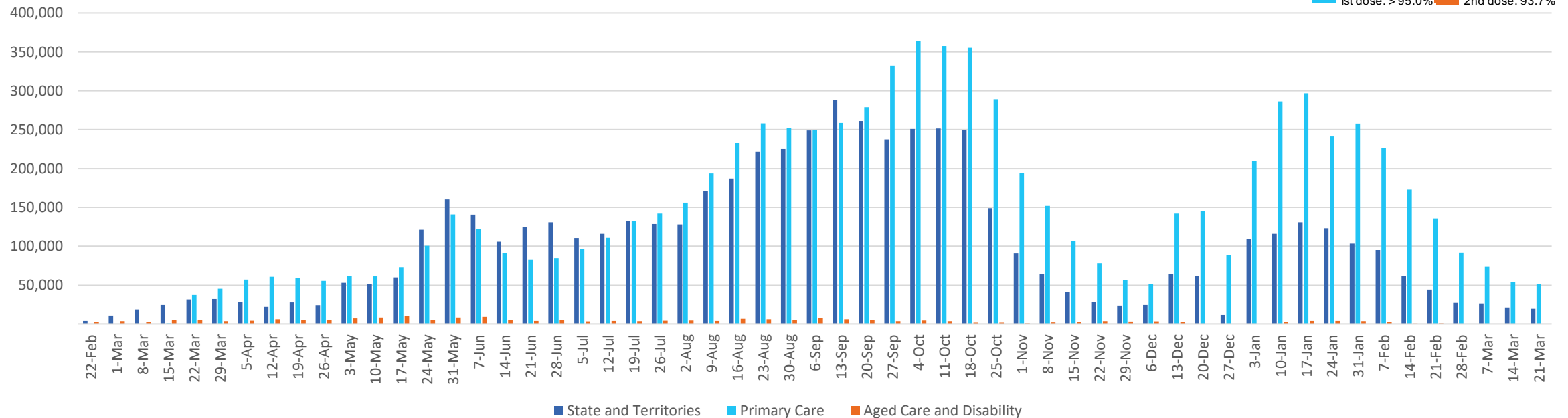
	21/03/2022	22/03/2022	23/03/2022	24/03/2022	25/03/2022	26/03/2022	27/03/2022	7 day total
State and Territory	4,660	4,442	4,590	4,148	5,008	8,142	4,774	35,764
Aged Care and Disability	13	32	17	<10	<10	<10	<10	73
Primary Care	17,738	16,083	13,109	15,437	16,662	9,441	3,614	92,084
Total (rounded)	22 K	21 K	18 K	20 K	22 K	18 K	8 K	128 K

Eligible population by % coverage



1st dose: > 95.0% 2nd dose: 93.7%

Doses administered by channel

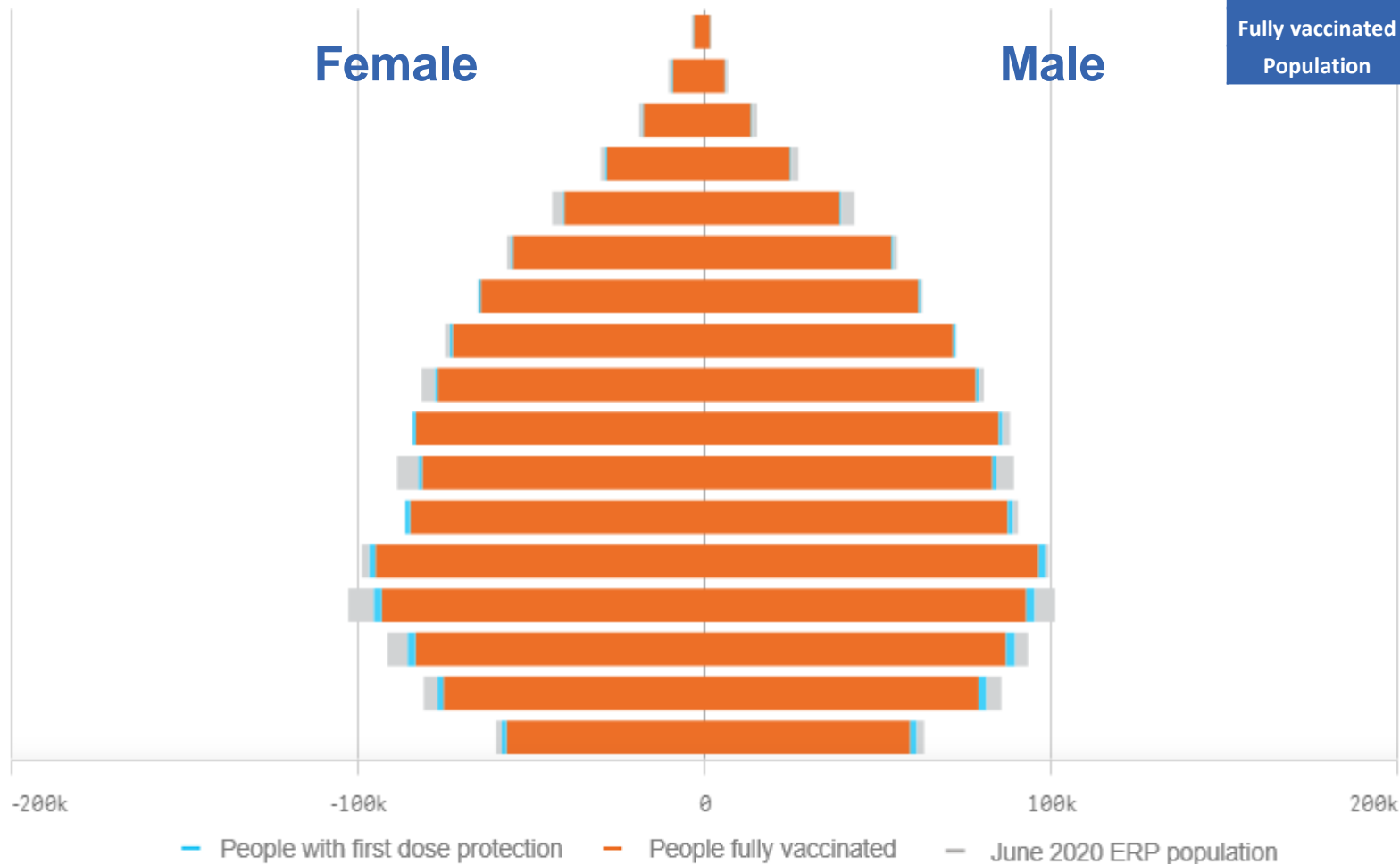


*Administration state breakdown indicates state in which a vaccine was administered and may differ to residential state. Recent weeks may be understated.

Data as at:
27 Mar 2022

Vaccinations by State or Territory of residence

Western Australia



	16+	50+	70+
At least one dose	> 95% 2,083,791	>95% 898,713	>95% 297,077
Fully vaccinated	> 95% 2,045,660	>95% 887,561	>95% 292,755
Population	2,114,978	885,370	280,281

Age	At least one dose	Fully vaccinated
95+	>95%	>95%
90-94	>95%	>95%
85-89	>95%	>95%
80-84	>95%	>95%
75-79	>95%	>95%
70-74	>95%	>95%
65-69	>95%	>95%
60-64	>95%	>95%
55-59	>95%	>95%
50-54	>95%	>95%
45-49	93.81%	92.49%
40-44	>95%	>95%
35-39	>95%	>95%
30-34	93.87%	91.44%
25-29	>95%	92.57%
20-24	>95%	92.90%
16-19	>95%	94.29%

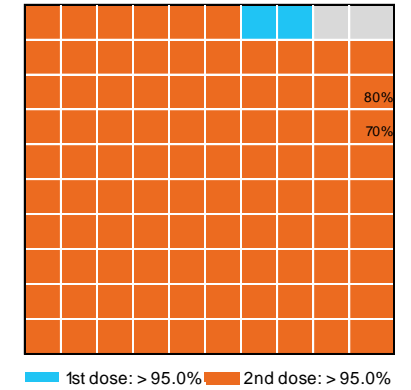
Vaccinations by State – Western Australia

Data as at:
27 Mar 2022

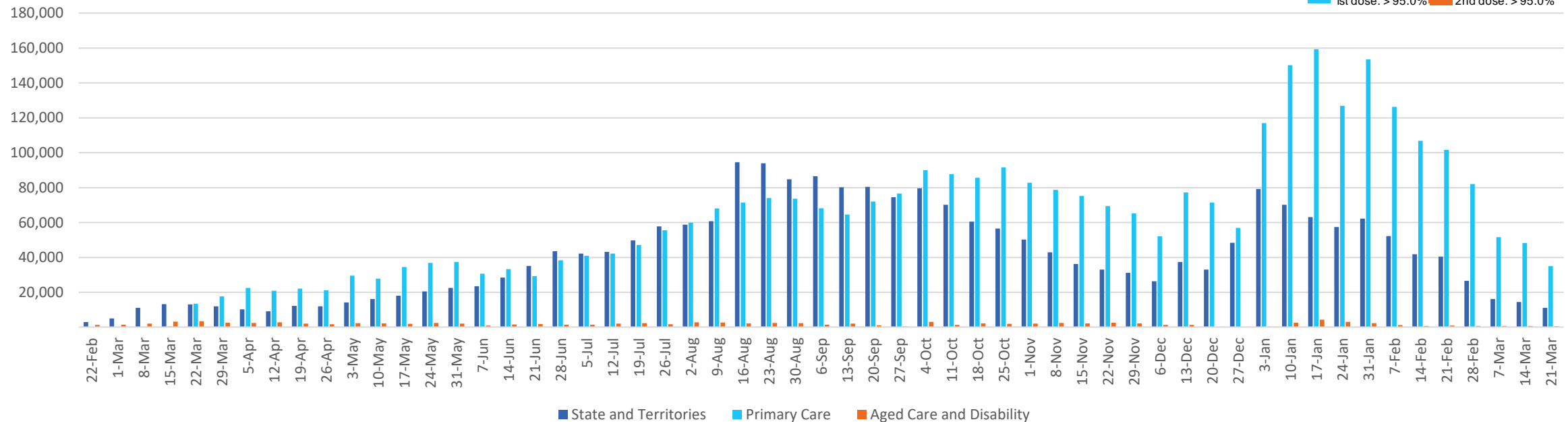
Past 7 days

	21/03/2022	22/03/2022	23/03/2022	24/03/2022	25/03/2022	26/03/2022	27/03/2022	7 day total
State and Territory	2,664	2,680	2,447	2,834	2,585	3,115	1,750	18,075
Aged Care and Disability	123	125	90	113	90	32	24	597
Primary Care	9,708	8,891	8,412	8,627	8,688	5,447	1,925	51,698
Total (rounded)	12 K	12 K	11 K	12 K	11 K	9 K	4 K	70 K

Eligible population by % coverage



Doses administered by channel



*Administration state breakdown indicates state in which a vaccine was administered and may differ to residential state. Recent weeks may be understated.