



Australian Government
Operation COVID Shield

COVID-19 Vaccine Roll-out

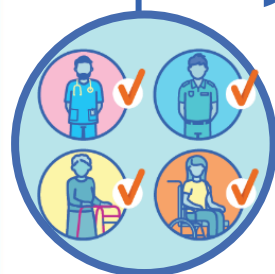
09 March 2022

Data as at:
08 Mar 2022

Total vaccine doses



54,749,767 total vaccine
doses administered nationally as at 08 March
+90,527 recorded in the last 24 hours



19,893,277

people have had at least one
dose

>95%

of people over the age of 16
have had at least one dose



19,516,706

people are fully vaccinated

94.6%

of people over the age of 16 are
fully vaccinated



11,985,296

people over the age of 16
who have received more
than two doses

NSW
17,067,193
(+21,899 daily
increase)

VIC
14,468,674
(+21,804 daily
increase)

QLD
10,388,719
(+16,350 daily
increase)

WA
5,914,617
(+17,487 daily
increase)

TAS
1,219,465
(+2,284 daily
increase)

SA
3,762,264
(+6,227 daily
increase)

ACT
1,398,277
(+3,342 daily
increase)

NT
530,558
(+1,134 daily
increase)

*Administration state breakdown indicates state in which a vaccine was administered

**Overall dose count includes instances of more than two doses per person in a small number of cases.

Source: Australian Immunisation Register

Booster Vaccinations

Australia's COVID-19
Vaccine Roadmap

Data as at:
08 Mar 2022



166,834

Indigenous people who have
received more than two doses

48.9%

of eligible population (341,325)



156,774

Aged Care Residents who have
received more than two doses##

90.7%

of eligible population (172,765)



158,409

NDIS participants

19,425

NDIS residents

who have received more than two doses#

68.6%

of eligible population
(231,000)

83.4%

of eligible population
(23,000)



11,985,296 total people who
have received more than two doses nationally

+57,975 recorded in the last 24 hours

64.9% of people who are eligible (18,453,294)
have received more than two doses

NSW	People	% of Eligible
Cumulative	3,696,513	60.3%
Daily increase	13,531	

VIC	People	% of Eligible
Cumulative	3,264,820	65.6%
Daily increase	15,044	

QLD	People	% of Eligible
Cumulative	2,070,045	61.8%
Daily increase	9,493	

WA	People	% of Eligible
Cumulative	1,408,170	83.1%
Daily increase	12,018	

SA	People	% of Eligible
Cumulative	848,941	69.9%
Daily increase	4,005	

TAS	People	% of Eligible
Cumulative	266,270	67.0%
Daily increase	1,774	

ACT	People	% of Eligible
Cumulative	245,786	71.9%
Daily increase	754	

NT	People	% of Eligible
Cumulative	97,806	63.8%
Daily increase	764	

*People may belong to multiple groups and could be represented in the above breakdowns multiple times.

NDIS participants data as at 7 March 2022.

Aged Care Residents data as at 8 March 2022.

Source: Australian Immunisation Register

86,945

doses administered to persons
residing in other territories or with
missing residential information

Vaccinations by residential location

Australia's COVID-19
Vaccine Roadmap

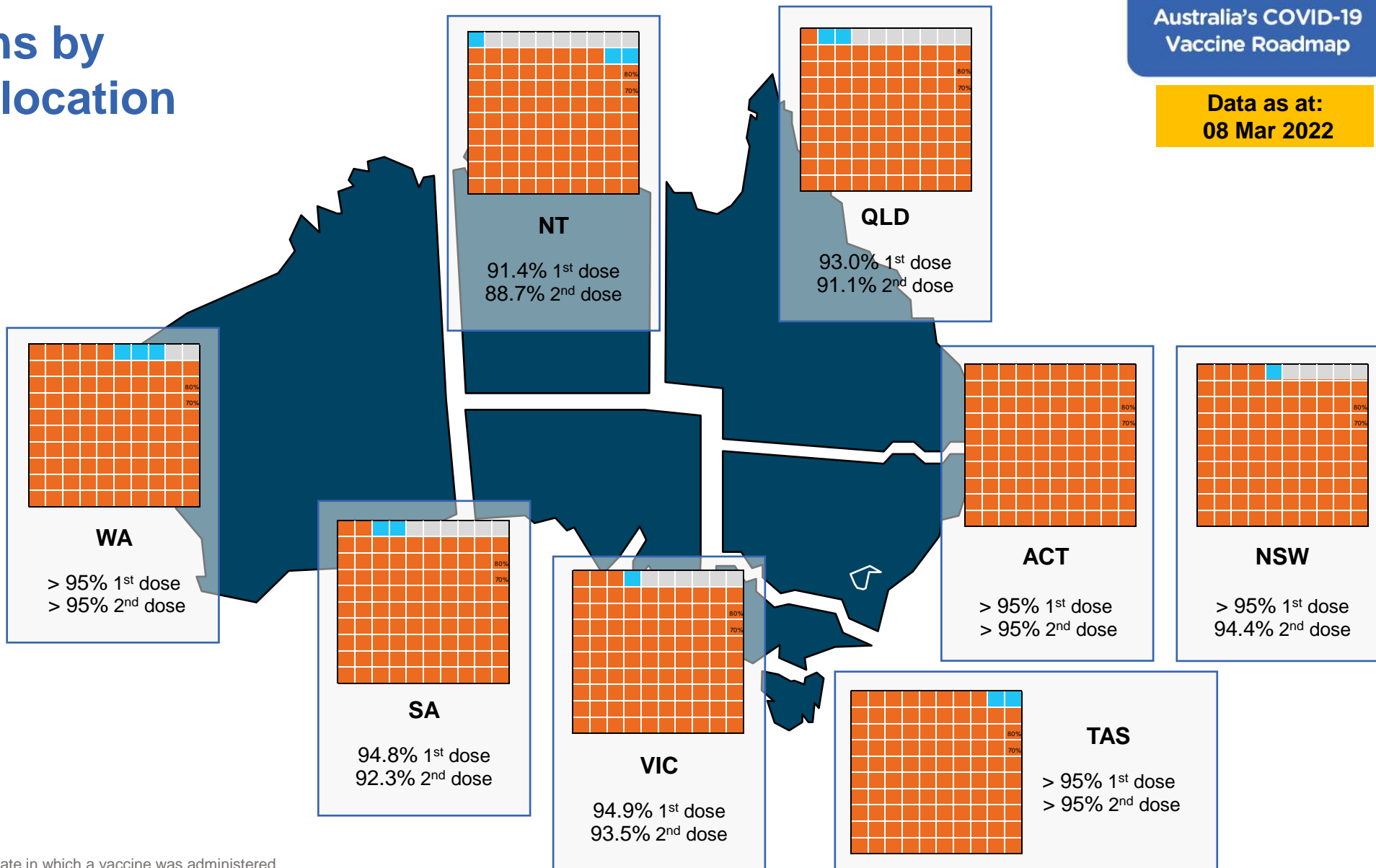
Data as at:
08 Mar 2022

First doses

Age	Today	4 weeks ago	8 weeks ago
16+	>95%	>95%	>95%
50+	>95%	>95%	>95%
70+	>95%	>95%	>95%

Fully vaccinated

Age	Today	4 weeks ago	8 weeks ago
16+	94.6%	94.0%	92.7%
50+	>95%	>95%	>95%
70+	>95%	>95%	>95%



*Residential state may differ from the state in which a vaccine was administered

Commonwealth and Jurisdiction vaccine doses administered

Data as at:
08 Mar 2022



54,749,767 total vaccine
doses administered nationally as at 08 March
+ 90,527 recorded in the last 24 hours



20,272,584
doses administered by state
and territory facilities
+ 19,994
recorded in the last 24 hours

NSW	Jurisdictions	Commonwealth
Cumulative	4,968,475	12,098,718
Daily increase	3,015	18,884

TAS	Jurisdictions	Commonwealth
Cumulative	588,978	630,487
Daily increase	304	1,980

VIC	Jurisdictions	Commonwealth
Cumulative	5,869,273	8,599,401
Daily increase	4,240	17,564

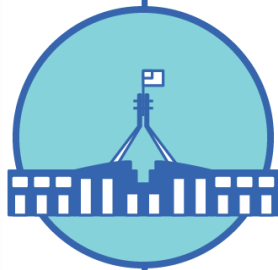
SA	Jurisdictions	Commonwealth
Cumulative	1,714,814	2,047,450
Daily increase	1,834	4,393

QLD	Jurisdictions	Commonwealth
Cumulative	3,726,032	6,662,687
Daily increase	3,806	12,544

ACT	Jurisdictions	Commonwealth
Cumulative	714,194	684,083
Daily increase	2,296	1,046

WA	Jurisdictions	Commonwealth
Cumulative	2,380,150	3,534,467
Daily increase	3,870	13,617

NT	Jurisdictions	Commonwealth
Cumulative	310,668	219,890
Daily increase	629	505

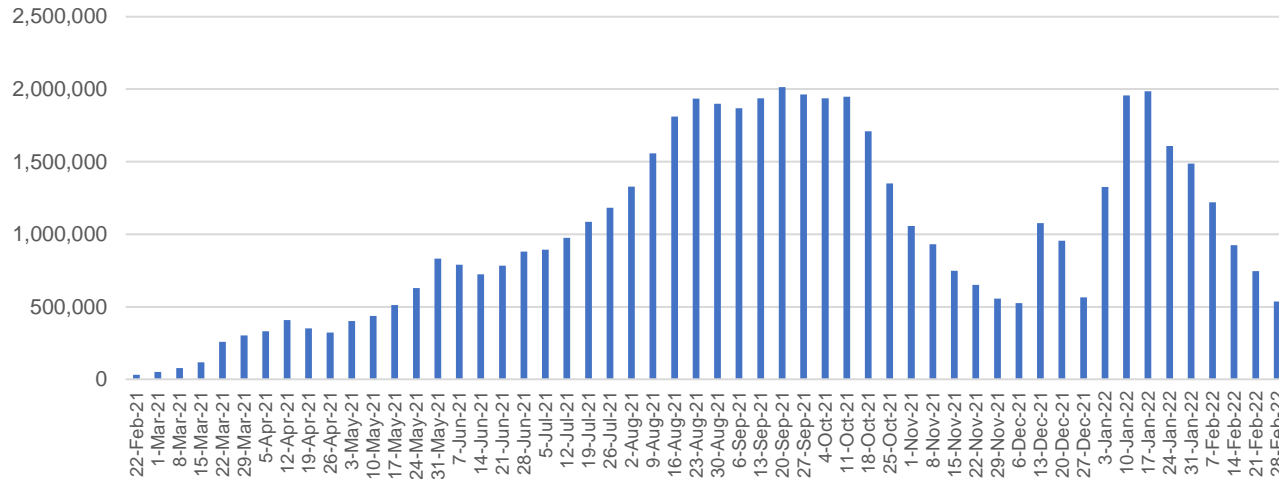


34,477,183
doses administered by
commonwealth facilities
+ 70,533
recorded in the last 24 hours

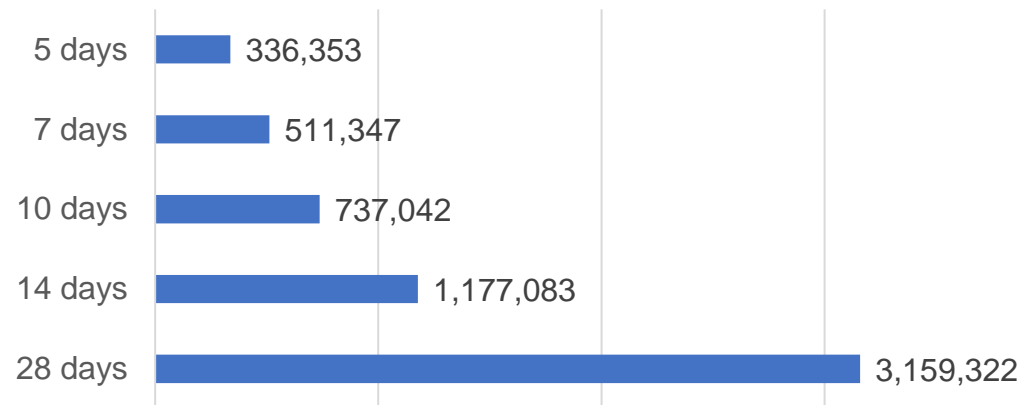
33,220,997 total vaccine doses
administered in primary care settings
1,256,186 total vaccine doses
administered in aged care and disability
settings

Vaccine milestone charts

Doses Administered by Week



Doses Reported

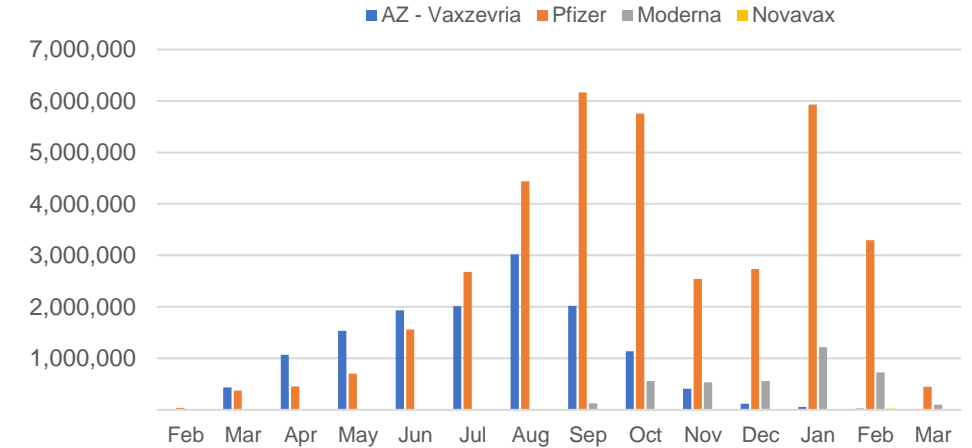


*Sourced from the Australian Immunisation Register.

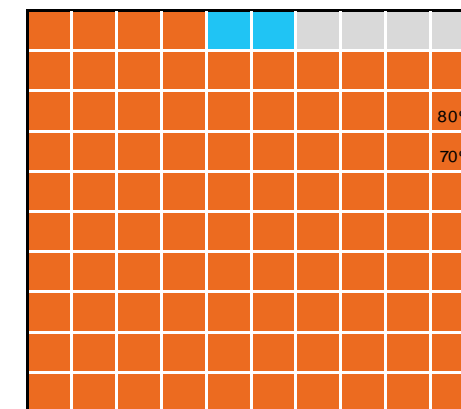
Data as at:
08 Mar 2022

Australia's COVID-19
Vaccine Roadmap

Doses by administration month and vaccine type



Eligible population percentage coverage



1st dose: >95.0% 2nd dose: 94.6%

*Each square represents 1% of the national population.
Squares are filled as milestones are achieved.

Doses by age and sex

First and second doses by age and sex

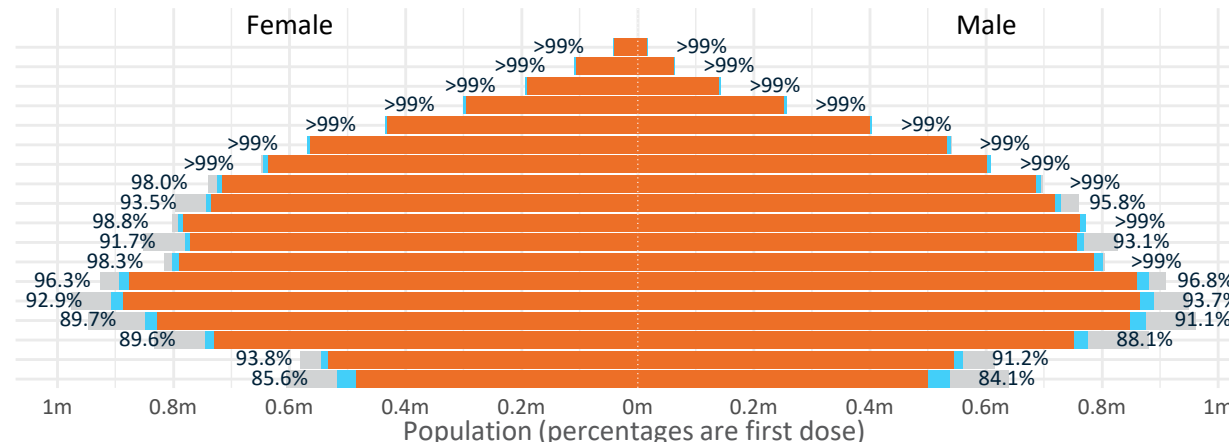
Australia's COVID-19
Vaccine Roadmap

Data as at:
08 Mar 2022

Age	Dose 1	Dose 2
95+	59,009 (>99%)	55,558 (>99%)
90-94	172,928 (>99%)	166,908 (>99%)
85-89	337,724 (>99%)	329,991 (>99%)
80-84	556,212 (>99%)	547,974 (>99%)
75-79	839,567 (>99%)	830,018 (>99%)
70-74	1,109,640 (>99%)	1,097,275 (>99%)
65-69	1,255,167 (>99%)	1,239,367 (98.5%)
60-64	1,421,233 (98.9%)	1,402,943 (97.7%)
55-59	1,473,403 (94.7%)	1,454,444 (93.5%)
50-54	1,565,515 (>99%)	1,545,063 (98.8%)
45-49	1,550,790 (92.5%)	1,528,295 (91.1%)
40-44	1,604,380 (>99%)	1,575,773 (97.3%)
35-39	1,776,895 (96.8%)	1,740,047 (94.8%)
30-34	1,803,115 (93.7%)	1,756,687 (91.3%)
25-29	1,734,190 (91.0%)	1,683,421 (88.3%)
20-24	1,527,188 (89.2%)	1,484,751 (86.7%)
16-19	1,106,321 (92.5%)	1,078,191 (90.2%)
12-15	1,055,256 (84.8%)	983,735 (79.1%)

	16+	50+	12-15	5-11
Dose 1	96.48% (19,893,277 doses / 20,619,959 people)	>99% (8,790,398 doses / 8,749,703 people)	84.83% (1,055,256 doses / 1,243,990 people)	50.83% (1,157,159 doses / 2,276,638 people)
Dose 2	94.65% (19,516,706 doses / 20,619,959 people)	>99% (8,669,541 doses / 8,749,703 people)	79.08% (983,735 doses / 1,243,990 people)	2.98% (67,905 doses / 2,276,638 people)

Dose 1 Dose 2 Population

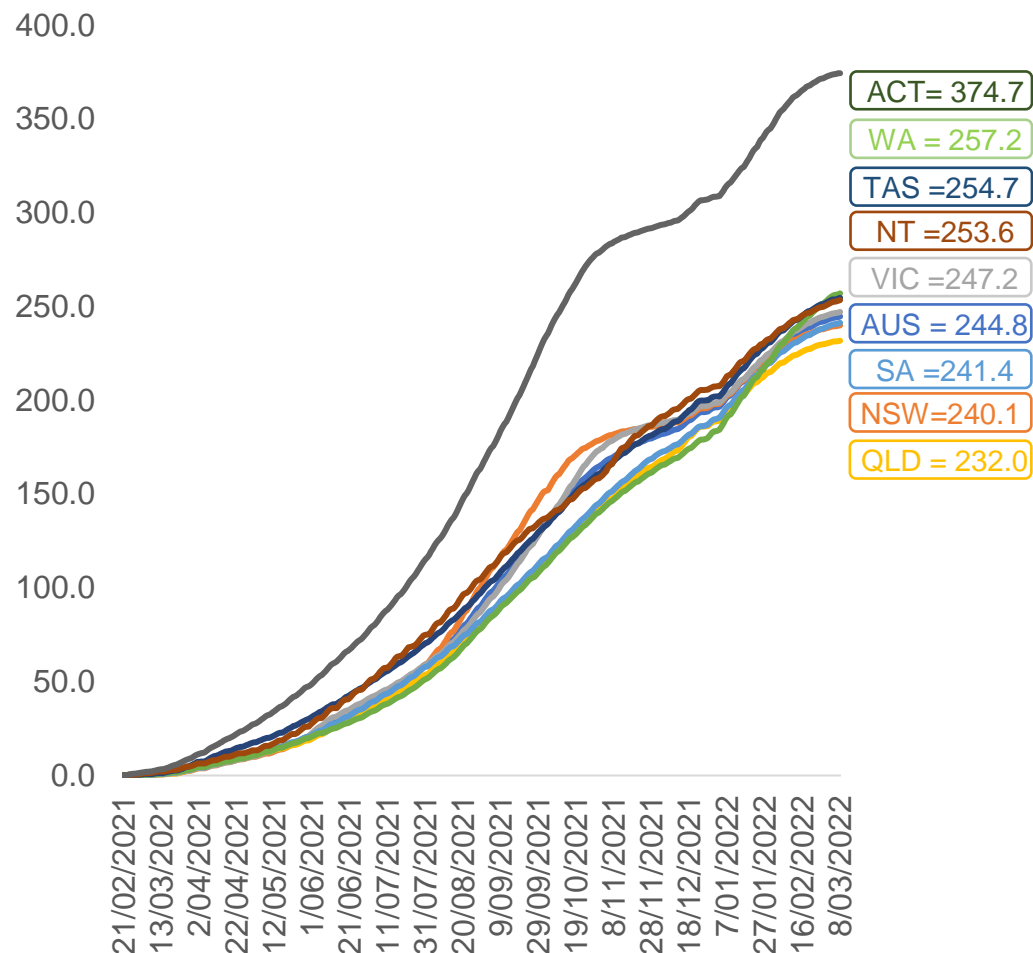


	AUS	ACT	NSW	NT	QLD	SA	TAS	VIC	WA
16 and over - dose 1	19,893,277	351,017	6,293,903	174,216	3,826,622	1,365,890	442,062	5,133,902	2,073,917
16 and over - dose 2	19,516,706	345,580	6,197,684	168,979	3,747,689	1,329,810	431,661	5,056,618	2,024,149
16 and over - population	20,619,959*	344,037	6,565,651	190,571	4,112,707	1,440,400	440,172	5,407,574	2,114,978
16 and over % with dose 1	96.48%	>99%	95.86%	91.42%	93.04%	94.83%	>99%	94.94%	98.06%
16 and over % with dose 2	94.65%	>99%	94.40%	88.67%	91.12%	92.32%	98.07%	93.51%	95.71%
5 to 11 - dose 1	1,157,159	31,280	344,523	12,779	204,881	82,476	27,950	317,829	128,371
5 to 11 - dose 2	67,905	1,956	23,689	496	12,359	3,090	2,476	19,120	4,392
5 to 11 - population	2,276,638	39,789	716,460	24,750	478,731	148,816	45,033	578,499	244,154
5 to 11 % with dose 1	50.83%	78.61%	48.09%	51.63%	42.80%	55.42%	62.07%	54.94%	52.58%
5 to 11 % with dose 2	2.98%	4.92%	3.31%	2.00%	2.58%	2.08%	5.50%	3.31%	1.80%
12 to 15 - dose 1	1,055,256	20,088	326,105	10,914	207,862	68,368	22,889	276,127	113,769
12 to 15 - dose 2	983,735	19,113	308,236	9,630	191,655	63,545	21,407	261,099	101,212
12 to 15 - population	1,243,990	19,693	390,330	13,060	270,146	82,747	26,308	308,611	132,869
12 to 15 % with dose 1	84.83%	>99%	83.55%	83.57%	76.94%	82.62%	87.00%	89.47%	85.62%
12 to 15 % with dose 2	79.08%	97.05%	78.97%	73.74%	70.94%	76.79%	81.37%	84.60%	76.17%

*National population will not equal sum of listed jurisdictions due to a small number of people counted in national population residing in some 'other' territories. Sum of state doses will not add to national total as some records are unable to be geocoded to a State or Territory.
Doses sourced from Australian Immunisation Register, population from ABS ERP June 2020

Vaccinations by location

Cumulative total doses administered vs eligible state populations*

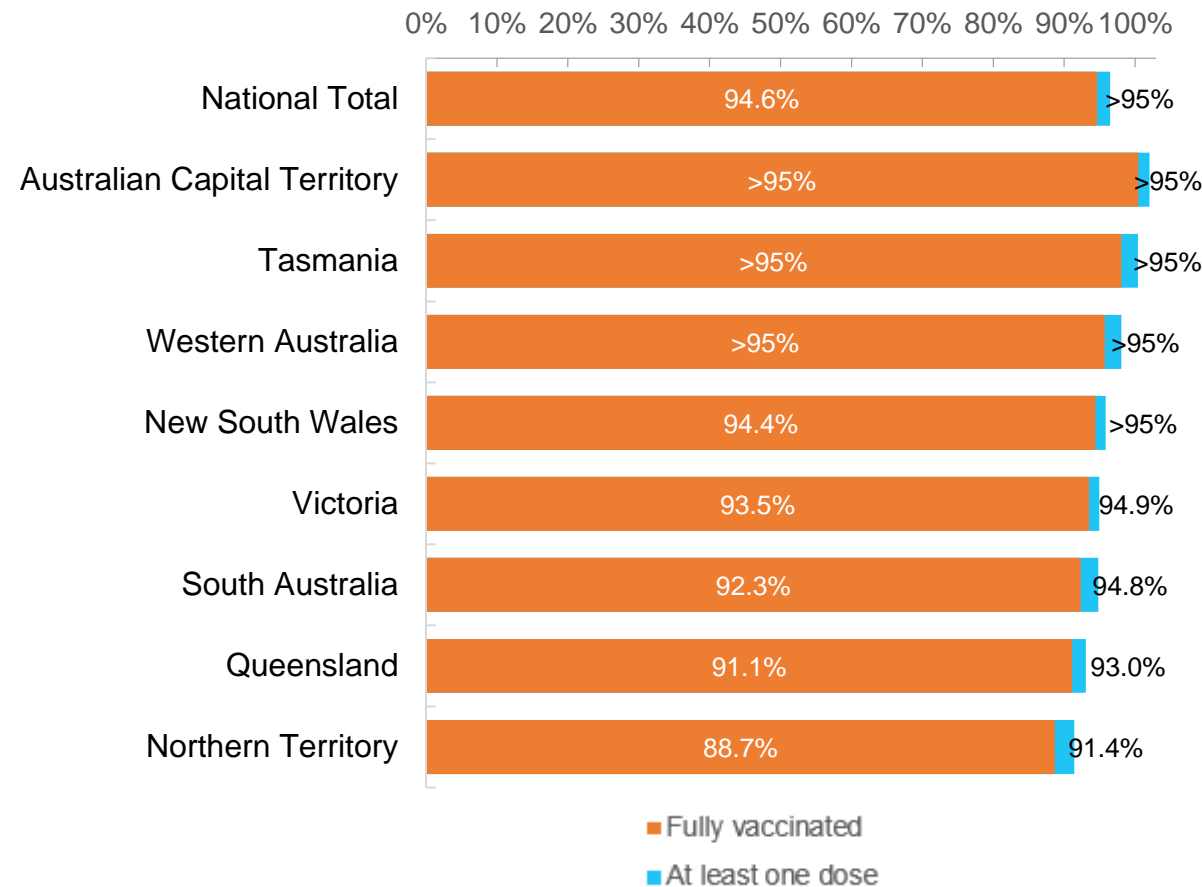


*Not an indication of percentage vaccinated, numbers will exceed 100 due to multiple doses required per person of the population. All doses are included for those aged 12 and above, and are based on vaccination provider location.

Data as at:
08 Mar 2022

Australia's COVID-19
Vaccine Roadmap

First and Second Doses by residential location



Aboriginal and Torres Strait Islander peoples

Number of people vaccinated

Data as at:
08 Mar 2022
Updated weekly

Australia's COVID-19
Vaccine Roadmap



433,759

people over the age of 16
have had at least one dose

83.6%

of people over the age of 16
have had at least one dose



409,697

people over the age of 16
are fully vaccinated

79.0%

of people over the age of 16 are
fully vaccinated



People aged 12 – 15 years

48,162

41,564

67.9%

At least one dose

58.6%

Fully vaccinated

177 Aboriginal community controlled health services (ACCHS)

0#

50

27

44

12

3

21

20

ACT

NSW

NT

QLD

SA

TAS

VIC

WA

Medicare Address State ^{##}	Individuals Dose 1	Individuals Dose 1 %	Individuals Dose 2	Individuals Dose 2 %
Australian Capital Territory	4,848	91.4%	4,721	89.0%
New South Wales	134,659	86.6%	131,311	84.4%
Northern Territory	42,080	88.9%	39,420	83.3%
Queensland	114,424	80.7%	107,675	76.0%
South Australia	19,667	79.2%	17,966	72.3%
Tasmania	14,001	88.3%	13,491	85.0%
Victoria	35,211	89.5%	34,292	87.1%
Western Australia	52,266	83.2%	46,258	73.6%
Unknown/Other Territories	16,603	64.4%	14,563	56.5%
Totals	433,759	83.6%	409,697	79.0%

Source: Australian Immunisation Register

*Identifying as Aboriginal and Torres Strait Islander is optional and the estimated population may be under reported.

**Includes all Aboriginal and Torres Strait Islander peoples who have received a vaccination, not limited to those administered in an ACCHS setting

#ACCHS in the ACT are currently operating as a Commonwealth Vaccine Clinics so not included to avoid double counting

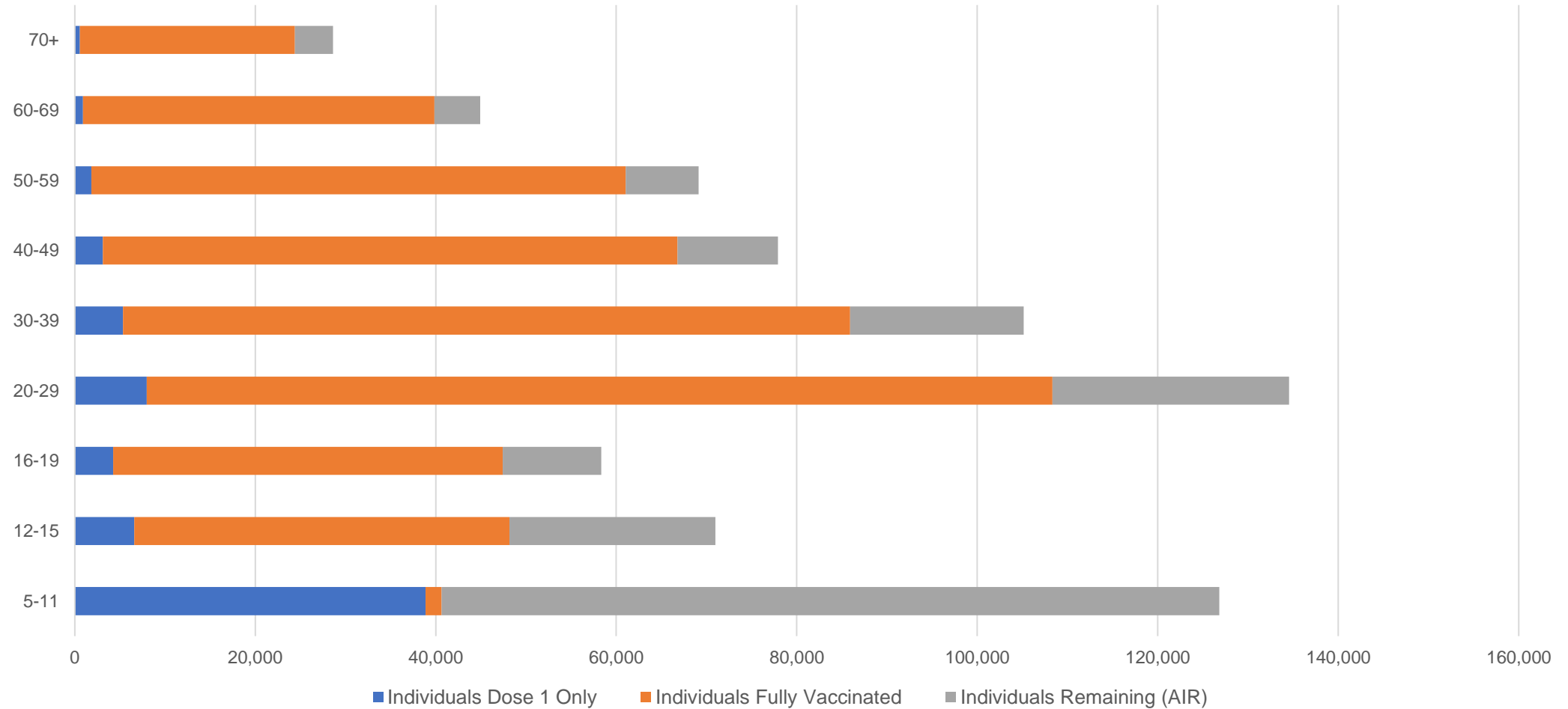
##The above table includes all identified Aboriginal and Torres Strait Islander people who are aged 16 and above by their state of residence.

Aboriginal and Torres Strait Islander peoples

Number of people vaccinated by age

Data as at:
08 Mar 2022
Updated weekly

Australia's COVID-19
Vaccine Roadmap



Source: Australian Immunisation Register

Commonwealth primary care

Data as at:
08 Mar 2022

Australia's COVID-19
Vaccine Roadmap



Primary care vaccine administration sites

5,783	127	177	3,572
GPs	CVCs	ACCHS	Pharmacies



33,220,997 total vaccine doses administered
primary care settings as at 08 March
+ 70,040 recorded in the last 24 hours

Primary care vaccinations by provider type

	Doses administered	Daily increase	7 day increase
General Practice* includes other Commonwealth	27,056,518	45,852	247,014
Pharmacy	6,164,479	24,188	144,709

NSW
11,557,602
(+18,676 daily increase)

VIC
8,296,956
(+17,284 daily increase)

QLD
6,391,907
(+12,662 daily increase)

WA
3,411,242
(+13,407 daily increase)

TAS
611,500
(+1,913 daily increase)

SA
1,971,509
(+4,289 daily increase)

ACT
524,606
(+954 daily increase)

NT
199,302
(+502 daily increase)

256,373

doses administered to persons
residing in other territories or with
missing residential information

*General practice includes Commonwealth Vaccination Clinics, Aboriginal Community Health Centres, Royal Flying Doctor Service and other Commonwealth vaccination facilities

Source: Australian Immunisation Register

Data as at:
08 Mar 2022

Commonwealth aged care and disability doses administered



1,256,186 (+ 493 last 24 hours)

Total vaccine doses administered in aged care and disability facilities as at 08 March

Number of doses administered as part of the Commonwealth aged and disability care rollout

NSW
556,755
(-11# daily increase)

VIC
234,449
(+97 daily increase)

QLD
198,347
(+112 daily increase)

WA
103,191
(+131 daily increase)

TAS
22,398
(+9 daily increase)

SA
83,904
(+57 daily increase)

ACT
16,478
(-1# daily increase)

NT
7,379
(+3 daily increase)

33,285

doses administered to persons
residing in other territories or with
missing residential information

*Sourced from the Australian Immunisation Register. Includes all persons vaccinated at participating residential aged care, disability and related industry settings.

**State level breakdown indicates the residential location and may not align to the state in which the vaccination occurred.

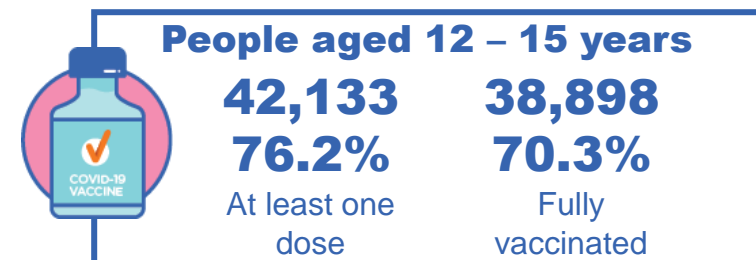
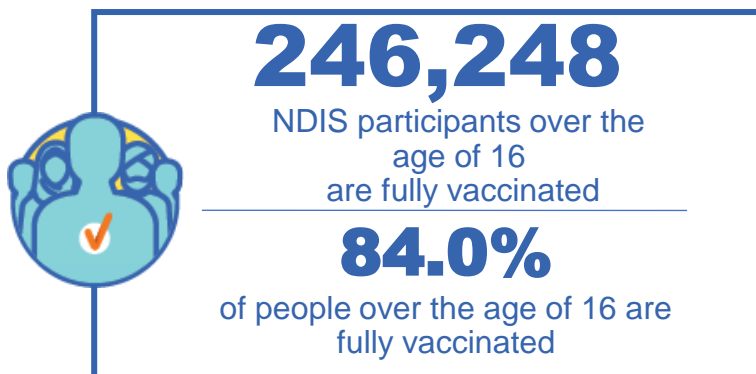
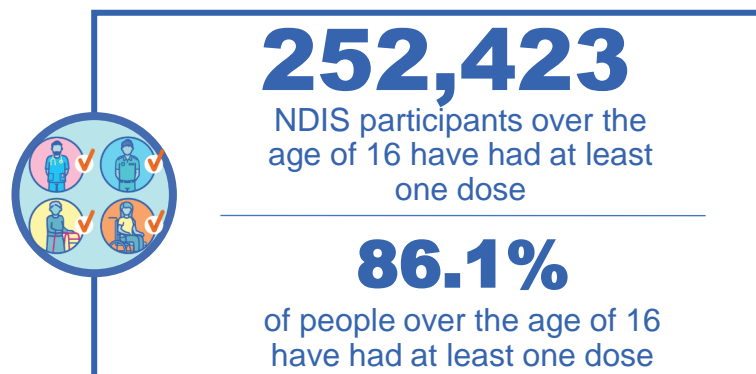
Numbers are calculated as difference in daily cumulative reported numbers to allow for historical corrections in all data sources. This can occasionally result in negative numbers, such as for NSW and ACT, where historical details about doses have been updated.

Source: Australian Immunisation Register

National Disability Insurance Scheme (NDIS) reported vaccinations

Data as at:
3 March 2022
Updated weekly

Australia's COVID-19
Vaccine Roadmap



NDIS participant vaccinations

	People aged 16+ with at least one dose	People aged 16+ fully vaccinated	% People aged 16+ with at least one dose	% People aged 16+ fully vaccinated
ACT	4,805	4,735	88.6%	87.3%
NSW	77,913	76,564	86.8%	85.3%
NT	2,189	2,092	76.7%	73.3%
QLD	49,530	48,241	84.2%	82.0%
SA	20,529	19,829	83.7%	80.8%
TAS	6,319	6,121	86.0%	83.3%
VIC	67,312	65,949	87.4%	85.6%
WA	23,826	22,717	86.5%	82.5%
National	252,423	246,248	86.1%	84.0%

Source: Linkage between National Disability Insurance Agency data and the Australian Immunisation Register. Total NDIS participant numbers as at 28th February. Australian Immunisation Register data as at 2 March. Includes all participants regardless of residence type.

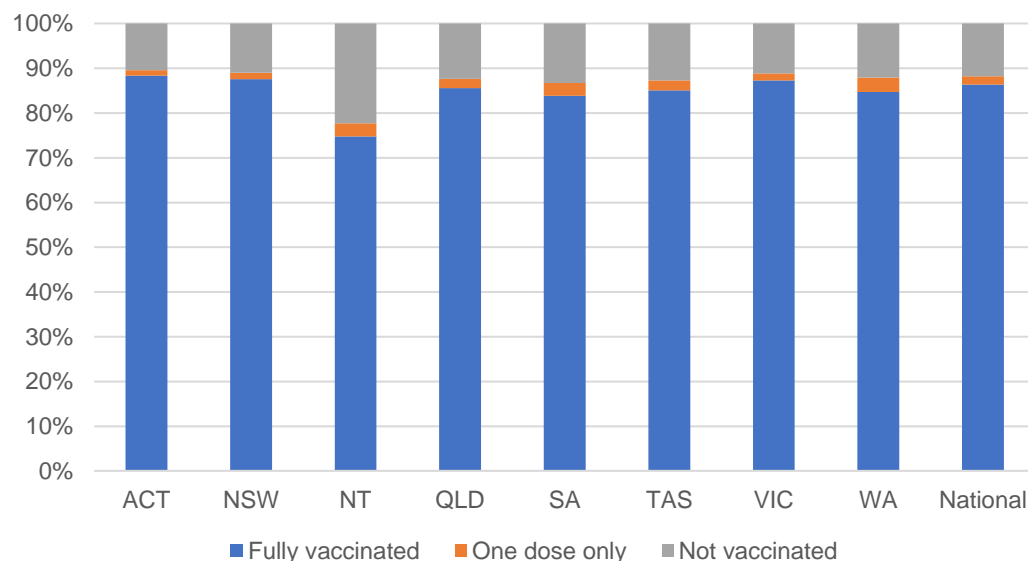
National Disability Insurance Scheme (NDIS) reported vaccinations

Data as at:
3 March 2022
Updated Weekly

Australia's COVID-19
Vaccine Roadmap

NATIONAL	Total people with at least one dose	People fully vaccinated	Total number of individuals in cohort	% People with at least one dose	% People fully vaccinated
NDIS participants living in disability accommodation	20,582	20,162	23,352	88.1%	86.3%

NDIS participants in disability and aged care accommodation



Source: Linkage between National Disability Insurance Agency data and the Australian Immunisation Register. Includes participants residing in disability accommodation only.

Source: Total NDIS participant numbers as at 28th February. Participant data as at 2 March. Australian Immunisation Register data as at 2 March. Worker data as at 3 March.

NDIS workforce vaccinations

	NDIS workers with at least one dose	NDIS workers fully vaccinated	% NDIS workers with at least one dose	% NDIS workers fully vaccinated
NSW	119,625	118,079	97.8%	96.5%
VIC	116,023	107,960	98.2%	91.4%
QLD	68,669	67,604	97.2%	95.7%
WA	32,653	30,181	98.5%	91.0%
SA	35,308	32,000	97.8%	88.7%
TAS	10,756	9,961	99.6%	92.2%
ACT	3,546	3,512	99.6%	98.7%
NT	3,419	3,377	99.5%	98.3%
TOTAL	389,999	372,674	98.0%	93.6%

Source: the NDIS Commission has established a requirement for registered NDIS providers who provide intensive disability support services to report on the vaccination status of workers they employ, or otherwise engage, to deliver NDIS-funded supports and services, and who are required to be vaccinated in accordance with in-force state and territory public health orders. The statistics reflect data reported to the NDIS Commission by registered NDIS providers and should be considered indicative and subject to change

Note: Some registered NDIS providers are yet to report on the vaccination status of their workforce. The NDIS Commission is working with those providers around reporting requirements.

Remaining workers not included include those exempt from vaccination requirements, workers whose vaccination status is not yet verified by the provider (such as workers on leave) and provider reporting anomalies.

Residential aged care vaccination rollout

Residential aged care facilities status

100%
Commonwealth facilities
visited (2,534 planned sites)

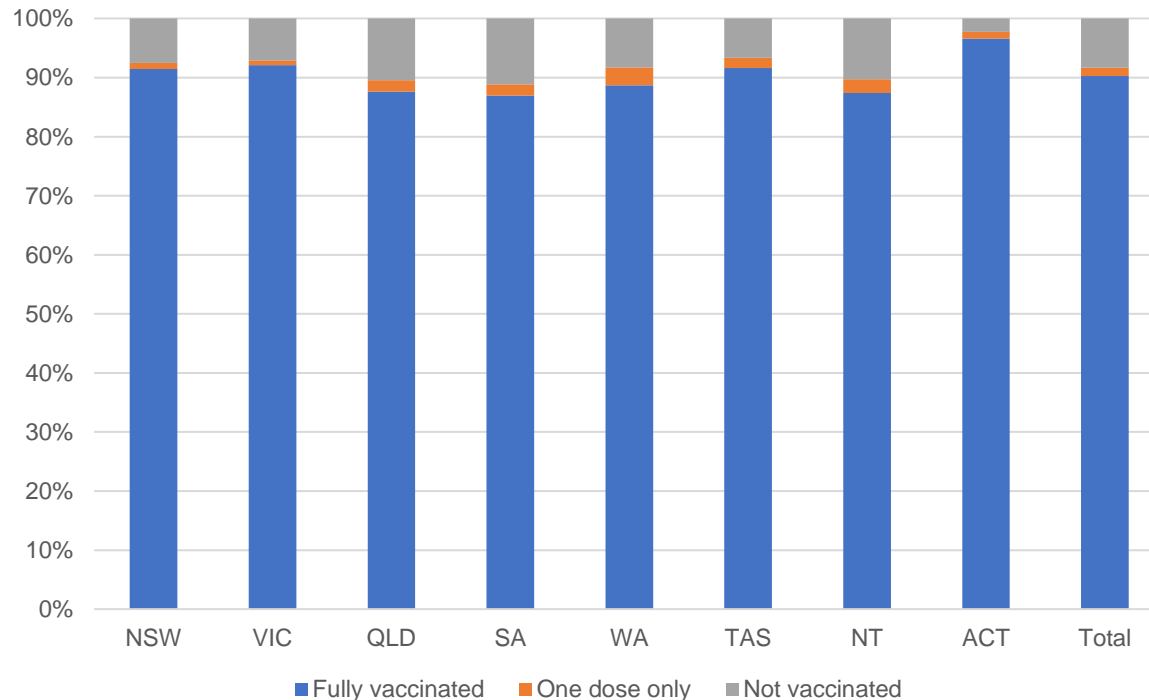
172,732
People fully vaccinated

175,464
People with at least
one dose

Australia's COVID-19
Vaccine Roadmap

Data as at:
03 Mar 2022
Updated weekly

Aged care resident vaccinations



Aged care worker vaccinations

Jurisdictions	Total workers with at least one dose	Workers fully vaccinated	% Workers with at least one dose	% Workers fully vaccinated
NSW	78,624	78,606	98.5%	98.5%
VIC	68,655	68,654	95.9%	95.9%
QLD	48,810	48,807	98.8%	98.8%
SA	26,332	26,306	97.4%	97.3%
WA	23,913	23,912	99.8%	99.8%
TAS	7,812	7,811	100.0%	100.0%
NT	884	884	100.0%	100.0%
ACT	3,048	3,048	100.0%	100.0%
Total	258,078	258,028	97.9%	97.9%

Source: My Aged Care Portal vaccination progress

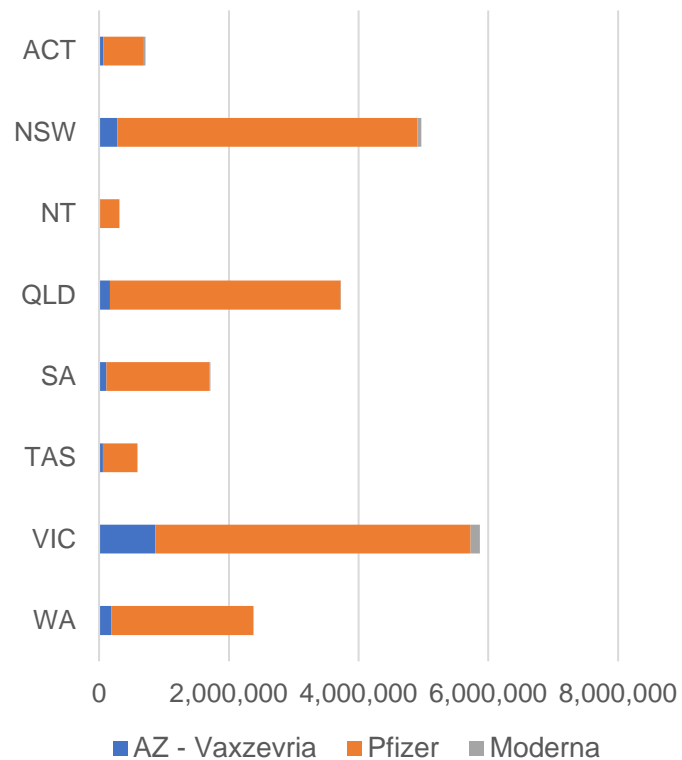
*Status updates are provided by facilities at least once per week. Reporting is updated Monday to Friday to encompass different facility updates being made on different days.

Data is sourced directly from Aged Care Service Providers and is not drawn or closely aligned with data from AIR due to inconsistencies and potential lags in uploading of records.

Data as at:
08 Mar 2022

Jurisdiction administered

Total vaccine doses administered in State and Territory clinics as at 08 March



20,272,584 total vaccine doses administered
in State and Territory clinics as at 08 March
+ **19,994** recorded in the last 24 hours
+ **115,868** recorded in the last 7 days

NSW
4,968,475
(+3,015 daily
increase)

VIC
5,869,273
(+4,240 daily
increase)

QLD
3,726,032
(+3,806 daily
increase)

WA
2,380,150
(+3,870 daily
increase)

TAS
588,978
(+304 daily
increase)

SA
1,714,814
(+1,834 daily
increase)

ACT
714,194
(+2,296 daily
increase)

NT
310,668
(+629 daily
increase)

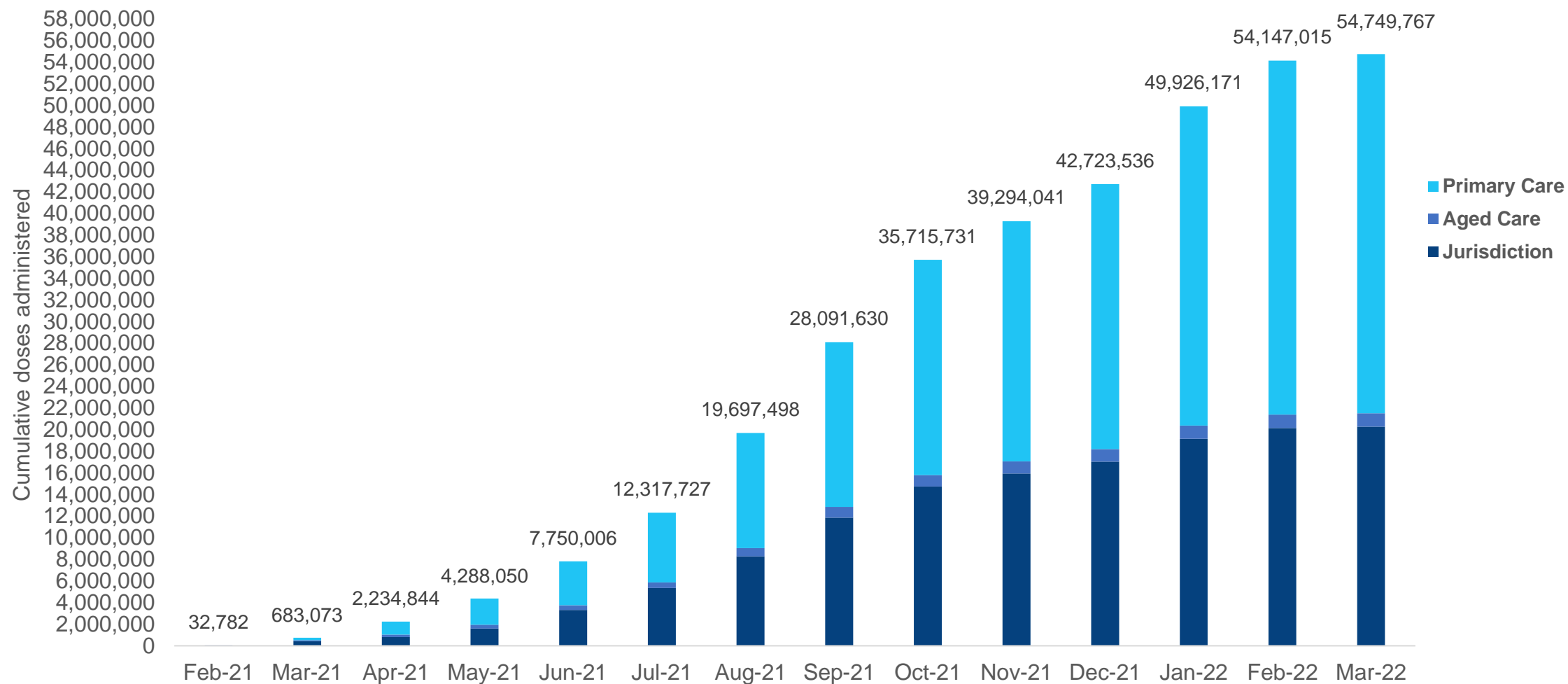
*Sourced from the Australian Immunisation Register. Numbers are calculated as difference in daily cumulative reported numbers to allow for historical corrections.

Source: Australian Immunisation Register

Cumulative doses administered by channel

Data as at:
08 Mar 2022

Australia's COVID-19
Vaccine Roadmap



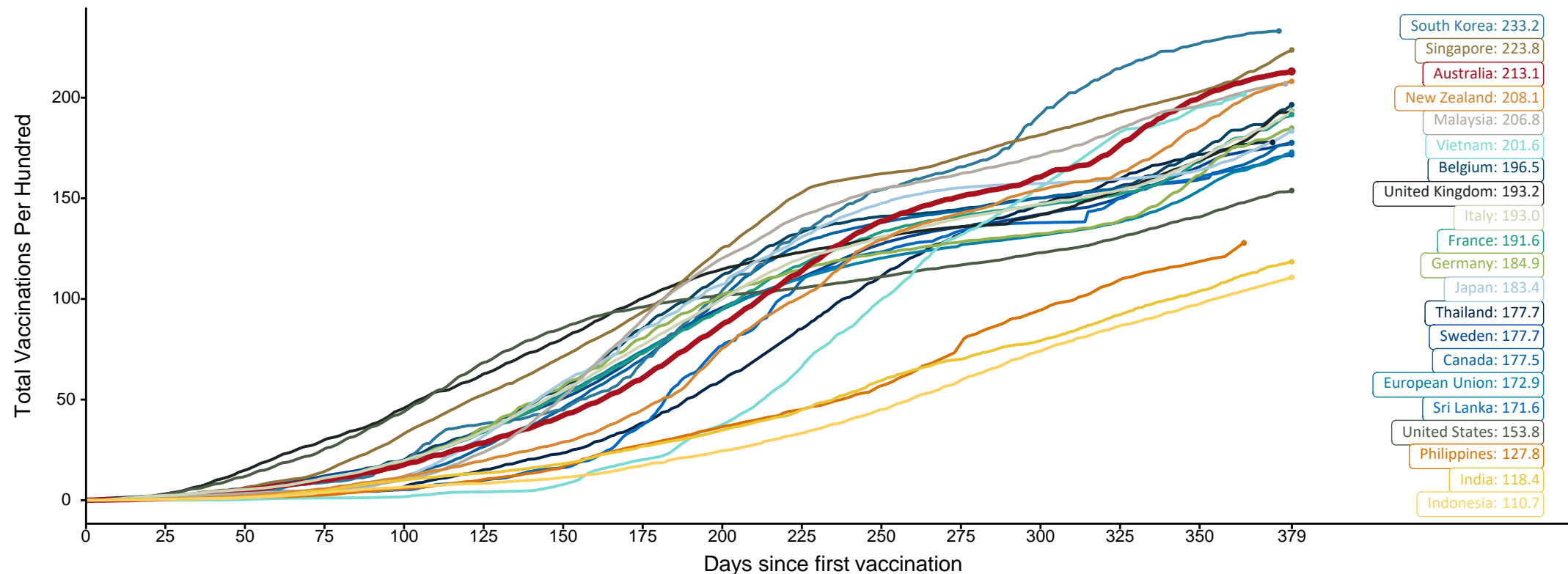
Source: Australian Immunisation Register

Doses at equivalent stages of rollout (Day 379)

Data as at:
08 Mar 2022

The x-axis is truncated at the length of Australia's vaccination program. Countries with intermittent reporting have had their doses per 100 imputed to Australia's current stage of rollout. Israel excluded as it is beyond scale of the graph

Cumulative doses administered (08 Mar): **54,749,767**



Note: From 11 January 2022, data for Australia includes all doses administered to people 5 and over. Prior to 11 January, data was for 12 and over.

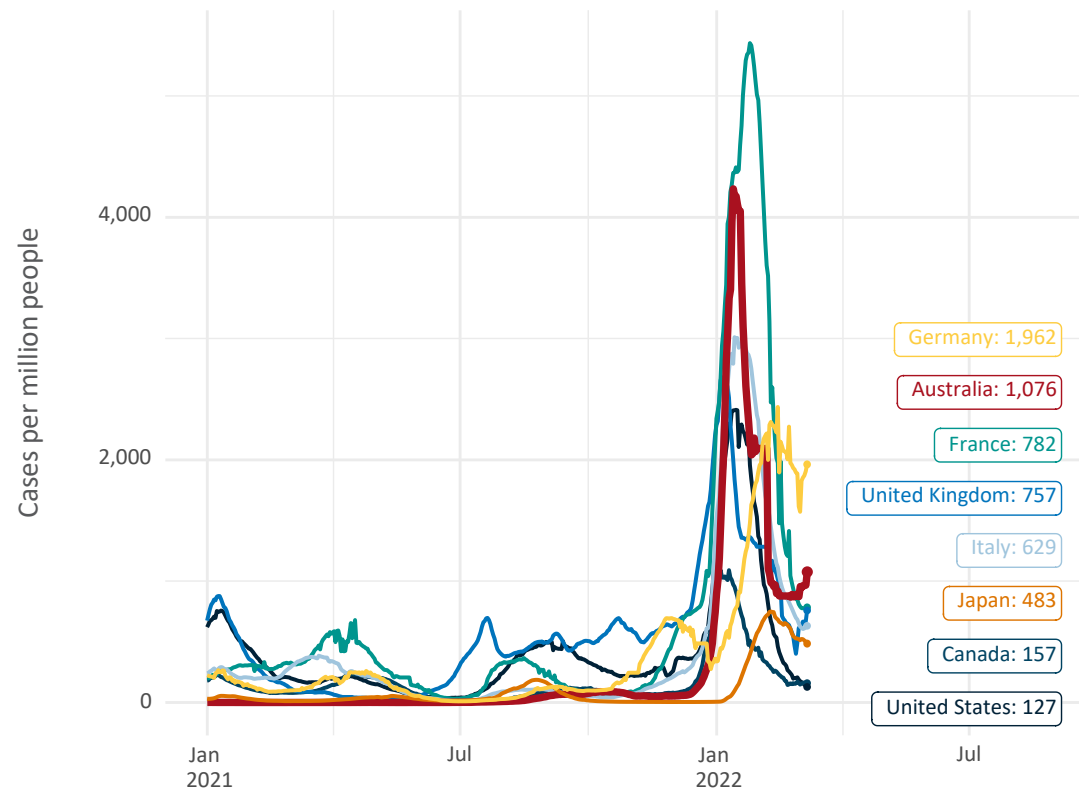
Source: Department of Health (Australia), Our World in Data (international)

Latest data: 08 March

International data – COVID-19

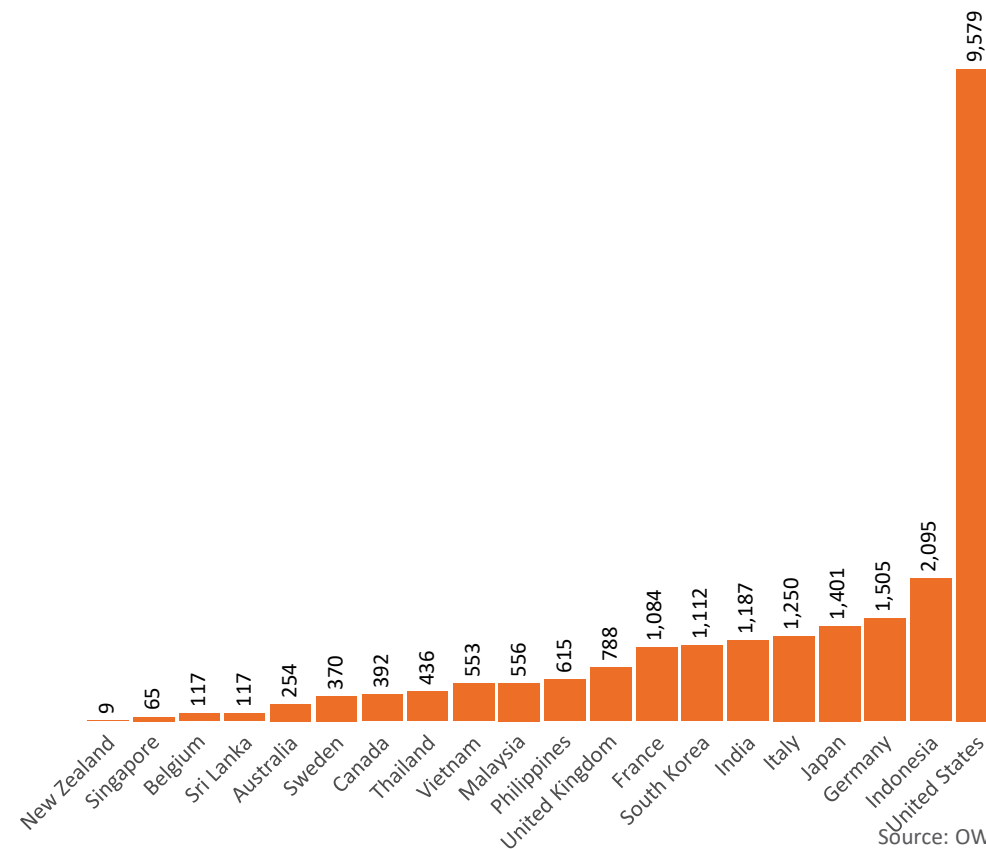
Data as at:
08 Mar 2022

New daily cases per million in 2021, Australia and G7 countries
Smoothed - 7 day average



Source: OWID
Data downloaded: 09 Mar 2022 07:51
Latest data: 07 Mar 2022

COVID-19 deaths in past 7 days - Australia and select countries



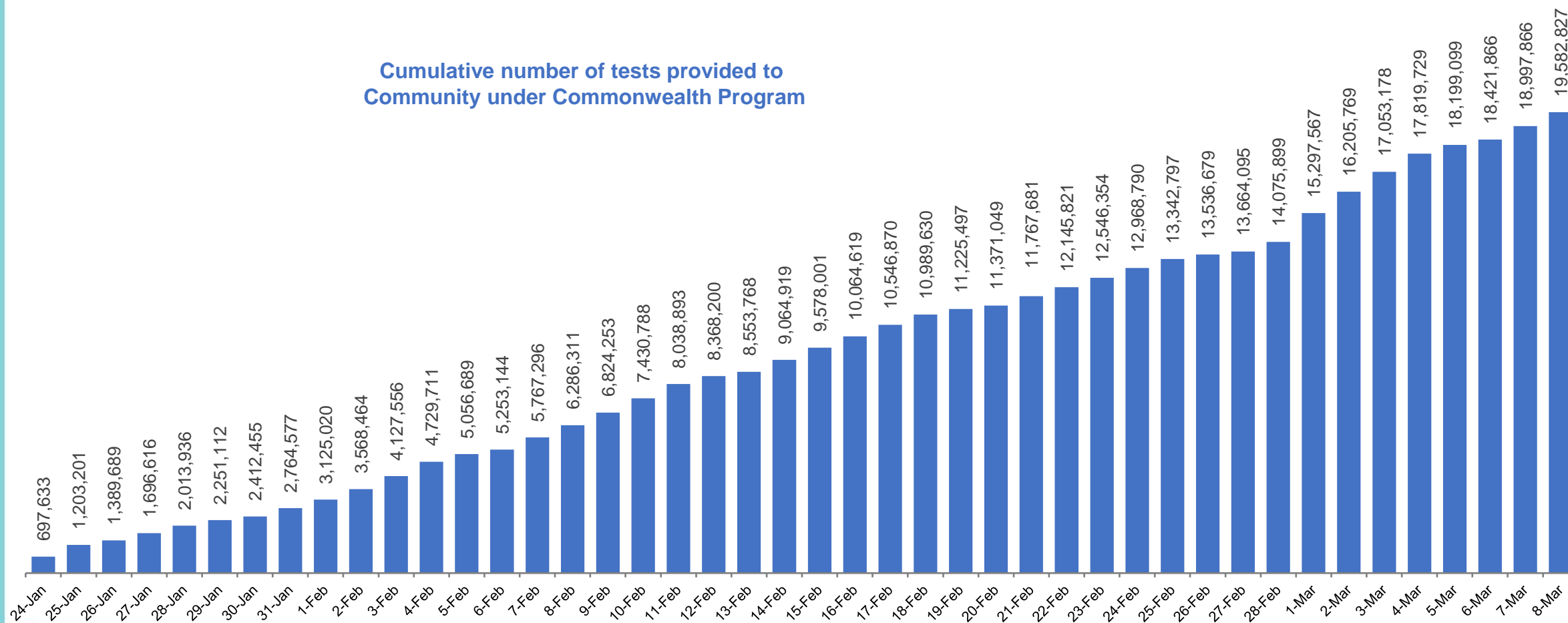
Source: OWID
Data downloaded: 09 Mar 2022 07:51
Latest data: 07 Mar 2022

Data as at
8 Mar 2022

Concessional rapid antigen test program

5,595 pharmacies have delivered over **19.5 million rapid antigen tests** to more than **3.4m eligible concession card holders** under the Government's concessional rapid antigen test program.

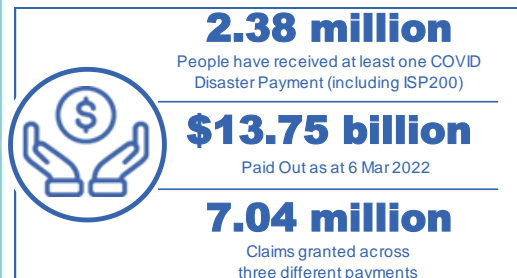
Cumulative number of tests provided to
Community under Commonwealth Program



Pandemic Response Payments

Australia's COVID-19
Vaccine Roadmap

Data as at midnight: 6 Mar 2022
Updated weekly



COVID Disaster Payment:	5.89 million claims received - 2.19 million individuals paid a total of \$12.59 billion.
\$200 Income Support Payment:	353,000 claims received - 183,000 individuals paid a total of \$268.9 million.
Pandemic Leave Disaster Payment:	1,214,000 claims received - 800,000 individuals paid a total of \$895.0 million.



COVID Disaster Payment

assisting during a lockdown event in a Commonwealth hotspot.

Income Support Payment \$200

for income support recipients who lost at least 8 hours of work.

Pandemic Leave Disaster Payment

for those who have to self-isolate, quarantine or care.

For more information visit:
servicesaustralia.gov.au

COVID-19 DISASTER PAYMENTS

Northern Territory

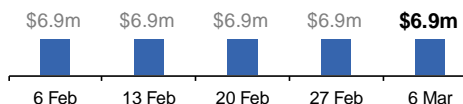
Lockdown (#3) from 16 Nov to 22 Nov
Claiming period ended 27 Dec

7,500 people have received at least one COVID Disaster Payment.

\$6.9m paid out as at 6 Mar 2022.

Nil paid in initial payments in the week ending 6 Mar 2022.

Cumulative payments made by Territory since activation on 25 Aug 2021.



Victoria

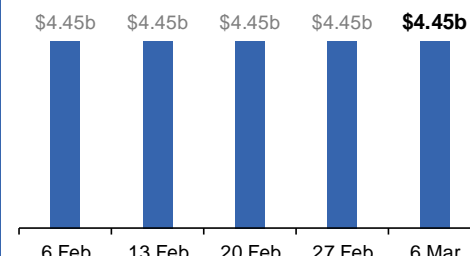
Lockdown (#6) from 6 Aug to 28 Oct
Claiming period ended 9 Dec

745,000 people have received at least one COVID Disaster Payment.

\$4.45b paid out as at 6 Mar 2022.

Nil paid in initial and reoccurring payments in the week ending 6 Mar 2022.

Cumulative payments made by State since activation on 8 Jun 2021.



New South Wales

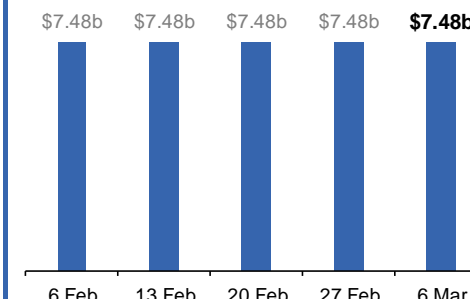
Lockdown from 24 Jun to 10 Oct
Claiming period ended 27 Nov

1.08m people have received at least one COVID Disaster Payment.

\$7.48b paid out as at 6 Mar 2022.

Nil paid in initial and reoccurring payments in the week ending 6 Mar 2022.

Cumulative payments made by State since activation on 1 Jul 2021.



Australian Capital Territory

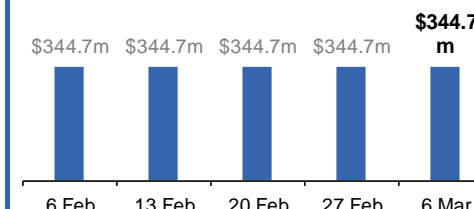
Lockdown from 12 Aug to 14 Oct
Claiming period ended 25 Nov

65,000 people have received at least one COVID Disaster Payment.

\$344.7m paid out as at 6 Mar 2022.

Nil paid in initial and reoccurring payments in the week ending 6 Mar 2022.

Cumulative payments made by Territory since activation on 20 Aug 2021.



Pandemic Response Payments (continued)

Data as at midnight: 6 Mar 2022
Updated weekly

COVID-19 DISASTER PAYMENTS

Tasmania

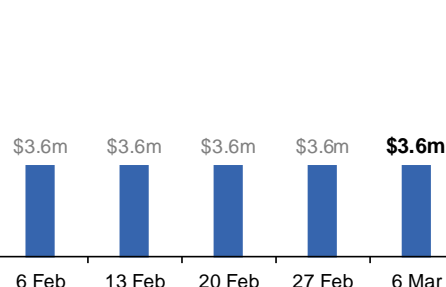
Lockdown from 15 Oct to 18 Oct
Claiming period ended 12 Nov

6,900 people have received at least one COVID Disaster Payment.

\$3.6m paid out as at 6 Mar 2022.

Nil paid in initial and reoccurring payments in the week ending 6 Mar 2022.

Cumulative payments made by State since activation on 22 Oct 2021.



Queensland

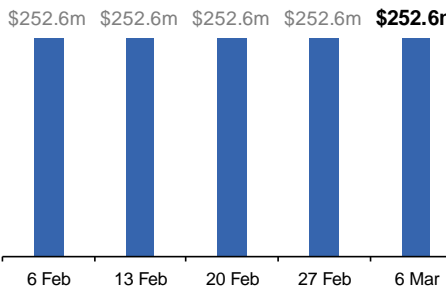
Lockdown from 31 Jul to 11 Aug
Claiming period ended 28 Aug

196,000 people have received at least one COVID Disaster Payment.

\$252.6m paid out as at 6 Mar 2022.

Nil paid in initial and reoccurring payments in the week ending 6 Mar 2022.

Cumulative payments made by State since activation on 7 Aug 2021.



South Australia

Lockdown from 21 to 27 Jul
Claiming period ended 17 Aug

86,000 people have received at least one COVID Disaster Payment.

\$48.2m paid out as at 6 Mar 2022.

Nil paid in initial and reoccurring payments in the week ending 6 Mar 2022.

Cumulative payments made by State since activation on 28 Jul 2021.

