



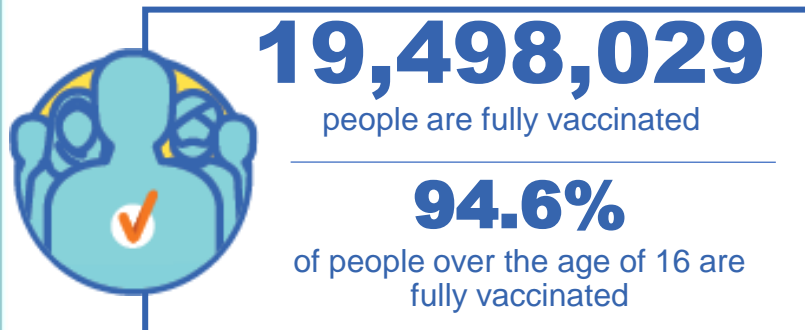
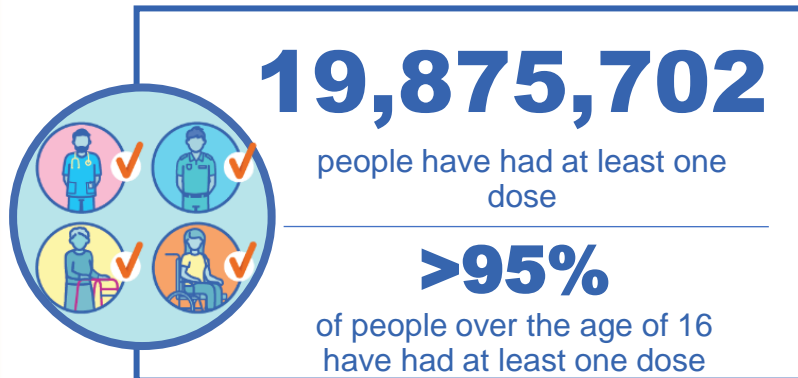
**Australian Government**  
**Operation COVID Shield**

# COVID-19 Vaccine Rollout

04 March 2022

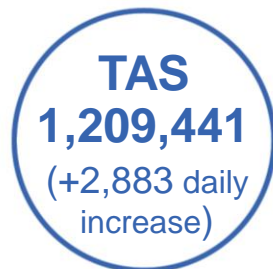
Data as at:  
03 Mar 2022

## Total vaccine doses



**54,413,414** total vaccine  
doses administered nationally as at 03 March

**+87,444** recorded in the last 24 hours



\*Administration state breakdown indicates state in which a vaccine was administered

\*\*Overall dose count includes instances of more than two doses per person in a small number of cases.

Source: Australian Immunisation Register

# Booster Vaccinations

Australia's COVID-19  
Vaccine Roadmap

Data as at:  
03 Mar 2022



**161,894**

Indigenous people who have  
received more than two doses

**48.6%**

of eligible population (333,162)



**156,248**

Aged Care Residents who have  
received more than two doses##

**90.4%**

of eligible population (172,793)



**155,165**

NDIS participants

**19,168**

NDIS residents

who have received more than two doses#

**67.9%**

of eligible population  
(228,000)

**82.8%**

of eligible population  
(23,000)



**11,744,570** total people who  
have received more than two doses nationally

**+70,962** recorded in the last 24 hours

**64.2%** of people who are eligible (18,287,618)  
have received more than two doses

NSW	People	% of Eligible
Cumulative	3,634,479	59.4%
Daily increase	18,132	

VIC	People	% of Eligible
Cumulative	3,198,855	64.5%
Daily increase	17,934	

QLD	People	% of Eligible
Cumulative	2,032,937	62.1%
Daily increase	10,216	

WA	People	% of Eligible
Cumulative	1,365,973	82.0%
Daily increase	14,579	

SA	People	% of Eligible
Cumulative	831,006	69.5%
Daily increase	5,094	

TAS	People	% of Eligible
Cumulative	260,258	66.2%
Daily increase	2,345	

ACT	People	% of Eligible
Cumulative	242,170	71.0%
Daily increase	818	

NT	People	% of Eligible
Cumulative	94,859	62.9%
Daily increase	944	

\*People may belong to multiple groups and could be represented in the above breakdowns multiple times.

# NDIS participants data as at 02 March 2022.

## Aged Care Residents data as at 03 March 2022.

Source: Australian Immunisation Register

**84,033**

doses administered to persons  
residing in other territories or with  
missing residential information

# Vaccinations by residential location

Australia's COVID-19 Vaccine Roadmap

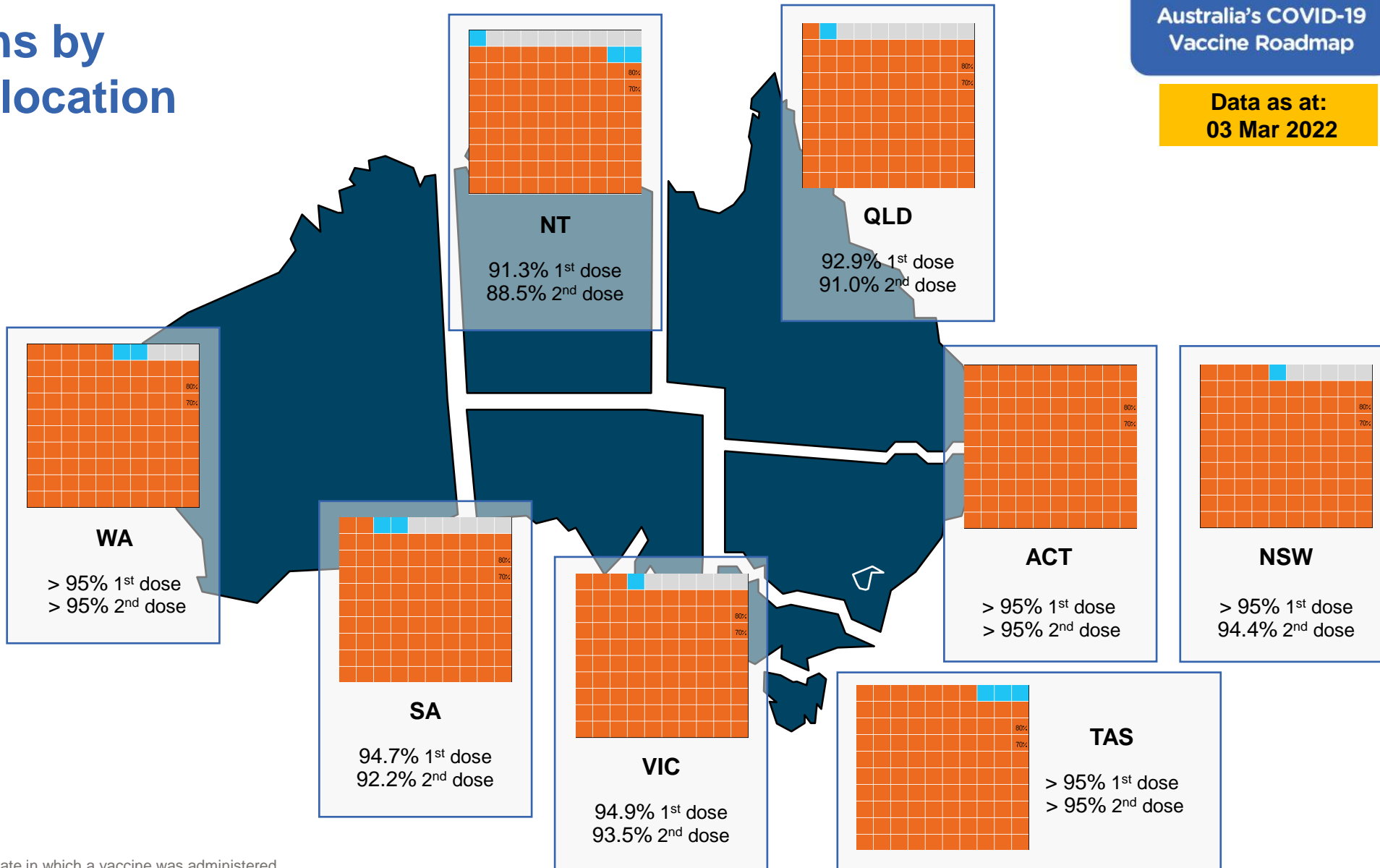
Data as at:  
03 Mar 2022

## First doses

Age	Today	4 weeks ago	8 weeks ago
16+	>95%	>95%	>95%
50+	>95%	>95%	>95%
70+	>95%	>95%	>95%

## Fully vaccinated

Age	Today	4 weeks ago	8 weeks ago
16+	94.6%	93.8%	92.3%
50+	>95%	>95%	>95%
70+	>95%	>95%	>95%



\*Residential state may differ from the state in which a vaccine was administered

# Commonwealth and Jurisdiction vaccine doses administered

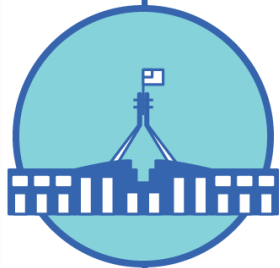
Data as at:  
03 Mar 2022



**54,413,414** total vaccine  
doses administered nationally as at 03 March  
**+ 87,444** recorded in the last 24 hours



**20,188,888**  
doses administered by state  
and territory facilities  
**+ 16,332**  
recorded in the last 24 hours



**34,224,526**  
doses administered by  
commonwealth facilities  
**+ 71,112**  
recorded in the last 24 hours

**32,970,592** total vaccine doses  
administered in primary care settings  
**1,253,934** total vaccine doses  
administered in aged care and disability  
settings

NSW	Jurisdictions	Commonwealth
Cumulative	4,956,741	12,025,114
Daily increase	1,780	19,409

VIC	Jurisdictions	Commonwealth
Cumulative	5,847,822	8,533,740
Daily increase	3,616	17,026

QLD	Jurisdictions	Commonwealth
Cumulative	3,713,589	6,619,868
Daily increase	1,871	11,111

WA	Jurisdictions	Commonwealth
Cumulative	2,363,325	3,493,117
Daily increase	4,357	15,177

TAS	Jurisdictions	Commonwealth
Cumulative	585,512	623,929
Daily increase	850	2,033

SA	Jurisdictions	Commonwealth
Cumulative	1,706,407	2,030,937
Daily increase	1,702	4,559

ACT	Jurisdictions	Commonwealth
Cumulative	707,349	679,507
Daily increase	1,561	1,072

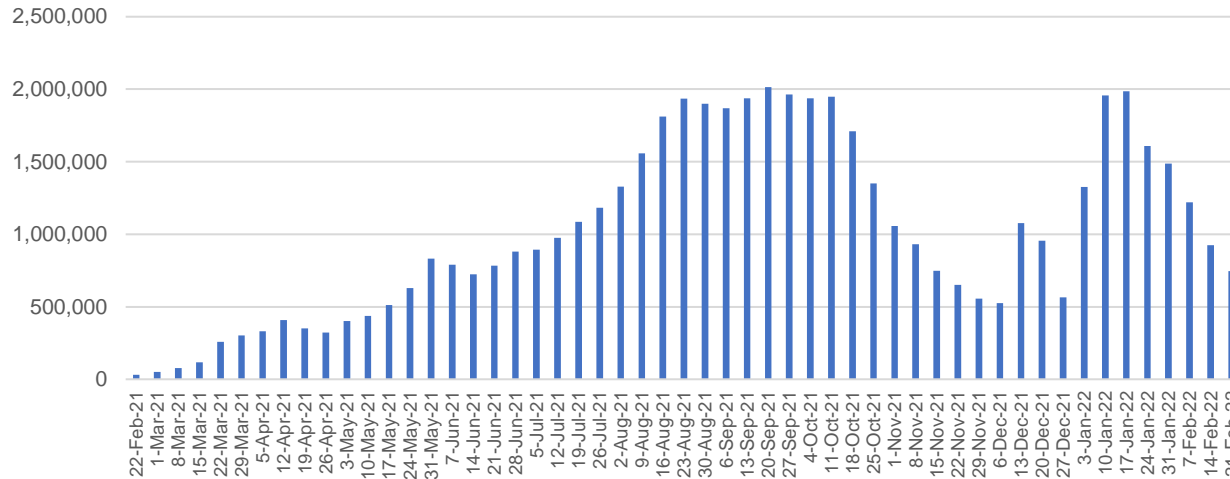
NT	Jurisdictions	Commonwealth
Cumulative	308,143	218,314
Daily increase	595	725

# Vaccine milestone charts

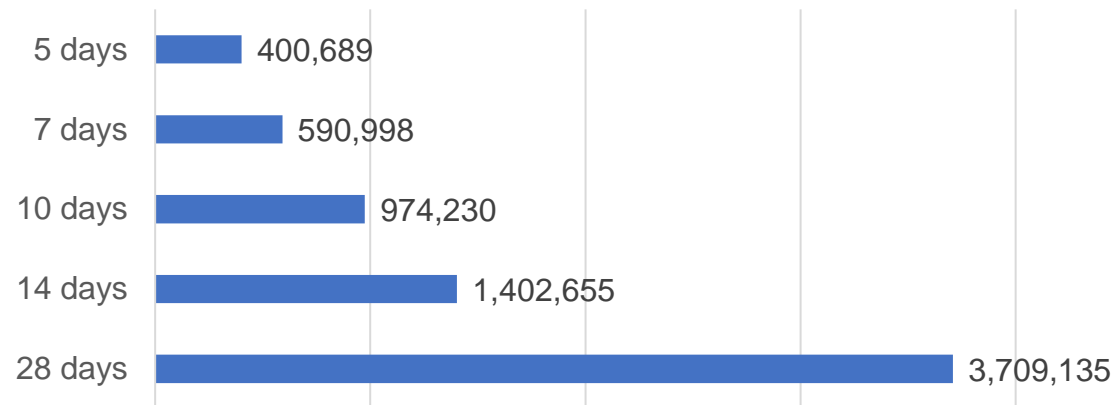
Data as at:  
03 Mar 2022

Australia's COVID-19  
Vaccine Roadmap

Doses Administered by Week

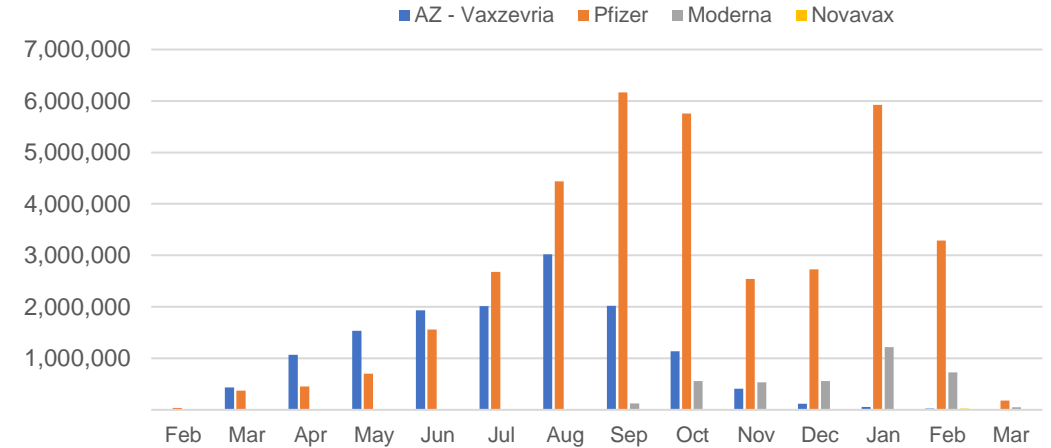


Doses Reported

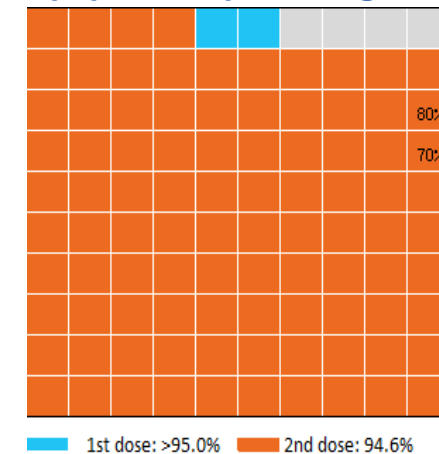


\*Sourced from the Australian Immunisation Register.

Doses by administration month and vaccine type



Eligible population percentage coverage



\*Each square represents 1% of the national population.  
Squares are filled as milestones are achieved.

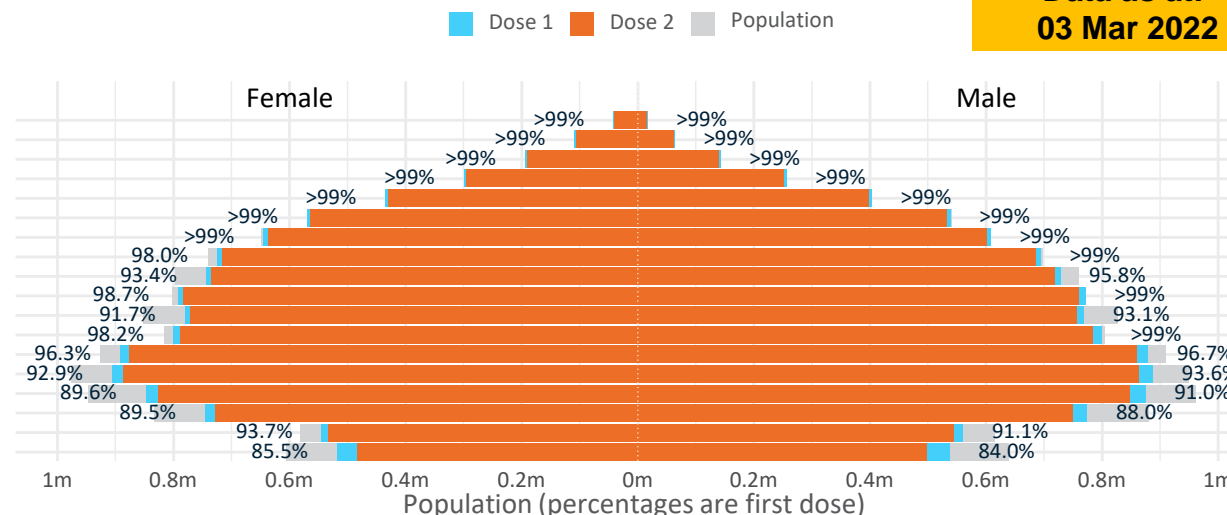
Data as at:  
03 Mar 2022

# Doses by age and sex

First and second doses by age and sex

	16+	50+	12-15	5-11
Dose 1	96.39% (19,875,702 doses / 20,619,959 people)	>99% (8,782,163 doses / 8,749,703 people)	84.80% (1,054,870 doses / 1,243,990 people)	50.41% (1,147,576 doses / 2,276,638 people)
Dose 2	94.56% (19,498,029 doses / 20,619,959 people)	98.99% (8,661,257 doses / 8,749,703 people)	78.98% (982,533 doses / 1,243,990 people)	1.08% (24,573 doses / 2,276,638 people)

Age	Dose 1	Dose 2
95+	58,721 (>99%)	55,234 (>99%)
90-94	172,492 (>99%)	166,424 (>99%)
85-89	336,996 (>99%)	329,182 (>99%)
80-84	555,486 (>99%)	547,149 (>99%)
75-79	838,215 (>99%)	828,596 (>99%)
70-74	1,109,107 (>99%)	1,096,727 (>99%)
65-69	1,253,967 (>99%)	1,238,263 (98.4%)
60-64	1,420,222 (98.9%)	1,402,026 (97.6%)
55-59	1,472,923 (94.7%)	1,454,041 (93.5%)
50-54	1,564,034 (>99%)	1,543,615 (98.7%)
45-49	1,550,546 (92.5%)	1,528,040 (91.1%)
40-44	1,602,562 (98.9%)	1,573,936 (97.1%)
35-39	1,775,491 (96.8%)	1,738,492 (94.7%)
30-34	1,801,433 (93.6%)	1,754,931 (91.2%)
25-29	1,732,406 (90.9%)	1,681,588 (88.2%)
20-24	1,525,602 (89.1%)	1,482,976 (86.6%)
16-19	1,105,499 (92.4%)	1,076,809 (90.1%)
12-15	1,054,870 (84.8%)	982,533 (79.0%)



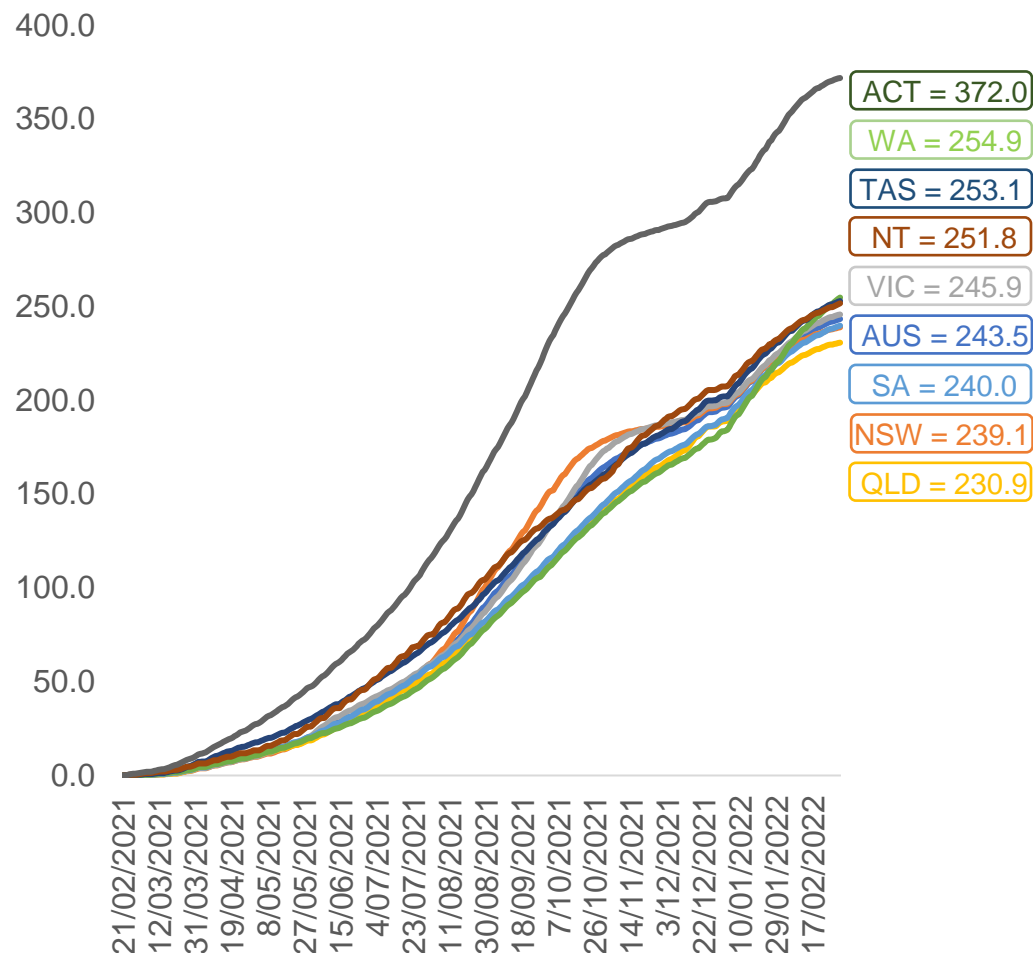
	AUS	ACT	NSW	NT	QLD	SA	TAS	VIC	WA
16 and over - dose 1	19,875,702	350,840	6,291,277	173,996	3,821,918	1,364,559	441,657	5,130,600	2,070,913
16 and over - dose 2	19,498,029	345,475	6,195,769	168,742	3,742,486	1,328,076	431,104	5,054,204	2,019,559
16 and over - population	20,619,959*	344,037	6,565,651	190,571	4,112,707	1,440,400	440,172	5,407,574	2,114,978
16 and over % with dose 1	96.39%	>99%	95.82%	91.30%	92.93%	94.73%	>99%	94.88%	97.92%
16 and over % with dose 2	94.56%	>99%	94.37%	88.55%	91.00%	92.20%	97.94%	93.47%	95.49%
5 to 11 - dose 1	1,147,576	31,122	342,052	12,707	204,291	82,039	27,771	315,919	124,652
5 to 11 - dose 2	24,573	373	9,936	168	3,878	574	106	7,698	1,680
5 to 11 - population	2,276,638	39,789	716,460	24,750	478,731	148,816	45,033	578,499	244,154
5 to 11 % with dose 1	50.41%	78.22%	47.74%	51.34%	42.67%	55.13%	61.67%	54.61%	51.05%
5 to 11 % with dose 2	1.08%	0.94%	1.39%	0.68%	0.81%	0.39%	0.24%	1.33%	0.69%
12 to 15 - dose 1	1,054,870	20,097	326,245	10,926	207,924	68,298	22,871	276,213	113,144
12 to 15 - dose 2	982,533	19,121	308,330	9,637	191,394	63,387	21,338	261,230	100,241
12 to 15 - population	1,243,990	19,693	390,330	13,060	270,146	82,747	26,308	308,611	132,869
12 to 15 % with dose 1	84.80%	>99%	83.58%	83.66%	76.97%	82.54%	86.94%	89.50%	85.15%
12 to 15 % with dose 2	78.98%	97.10%	78.99%	73.79%	70.85%	76.60%	81.11%	84.65%	75.44%

\*National population will not equal sum of listed jurisdictions due to a small number of people counted in national population residing in some 'other' territories. Sum of state doses will not add to national total as some records are unable to be geocoded to a State or Territory.  
Doses sourced from Australian Immunisation Register, population from ABS ERP June 2020



# Vaccinations by location

Cumulative total doses administered vs eligible state populations\*

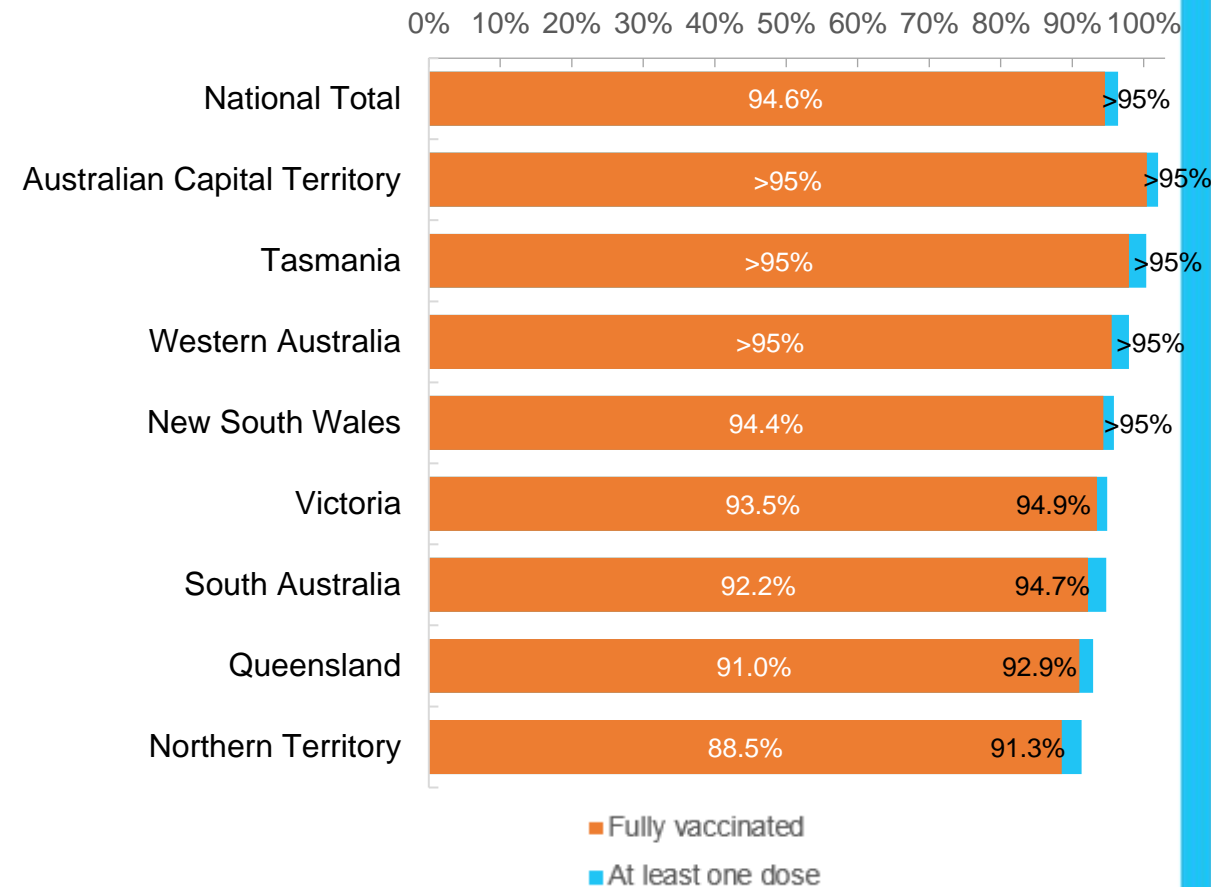


\*Not an indication of percentage vaccinated, numbers will exceed 100 due to multiple doses required per person of the population. All doses are included for those aged 12 and above, and are based on vaccination provider location.

Data as at:  
03 Mar 2022

Australia's COVID-19  
Vaccine Roadmap

First and Second Doses by residential location





# Aboriginal and Torres Strait Islander peoples

## Number of people vaccinated

Data as at:  
01 Mar 2022  
Updated weekly

Australia's COVID-19  
Vaccine Roadmap



**432,654**

people over the age of 16  
have had at least one dose

**83.4%**

of people over the age of 16  
have had at least one dose



**407,664**

people over the age of 16  
are fully vaccinated

**78.6%**

of people over the age of 16 are  
fully vaccinated



People aged 12 – 15 years

**47,918**

**41,279**

**67.5%**

At least one dose

**58.2%**

Fully vaccinated

### 177 Aboriginal community controlled health services (ACCHS)

0#

50

27

44

12

3

21

20

**ACT**

**NSW**

**NT**

**QLD**

**SA**

**TAS**

**VIC**

**WA**

Medicare Address State <sup>##</sup>	Individuals Dose 1	Individuals Dose 1 %	Individuals Dose 2	Individuals Dose 2 %
Australian Capital Territory	4,860	91.4%	4,729	88.9%
New South Wales	134,669	86.5%	131,268	84.3%
Northern Territory	41,974	88.7%	39,167	82.8%
Queensland	114,163	80.6%	107,138	75.6%
South Australia	19,634	78.9%	17,897	71.9%
Tasmania	14,042	88.1%	13,509	84.7%
Victoria	35,181	89.4%	34,262	87.1%
Western Australia	51,671	82.2%	45,346	72.2%
Unknown/Other Territories	16,460	63.9%	14,348	55.7%
<b>Totals</b>	<b>432,654</b>	<b>83.4%</b>	<b>407,664</b>	<b>78.6%</b>

Source: Australian Immunisation Register

\*Identifying as Aboriginal and Torres Strait Islander is optional and the estimated population may be under reported.

\*\*Includes all Aboriginal and Torres Strait Islander peoples who have received a vaccination, not limited to those administered in an ACCHS setting

#ACCHS in the ACT are currently operating as a Commonwealth Vaccine Clinics so not included to avoid double counting

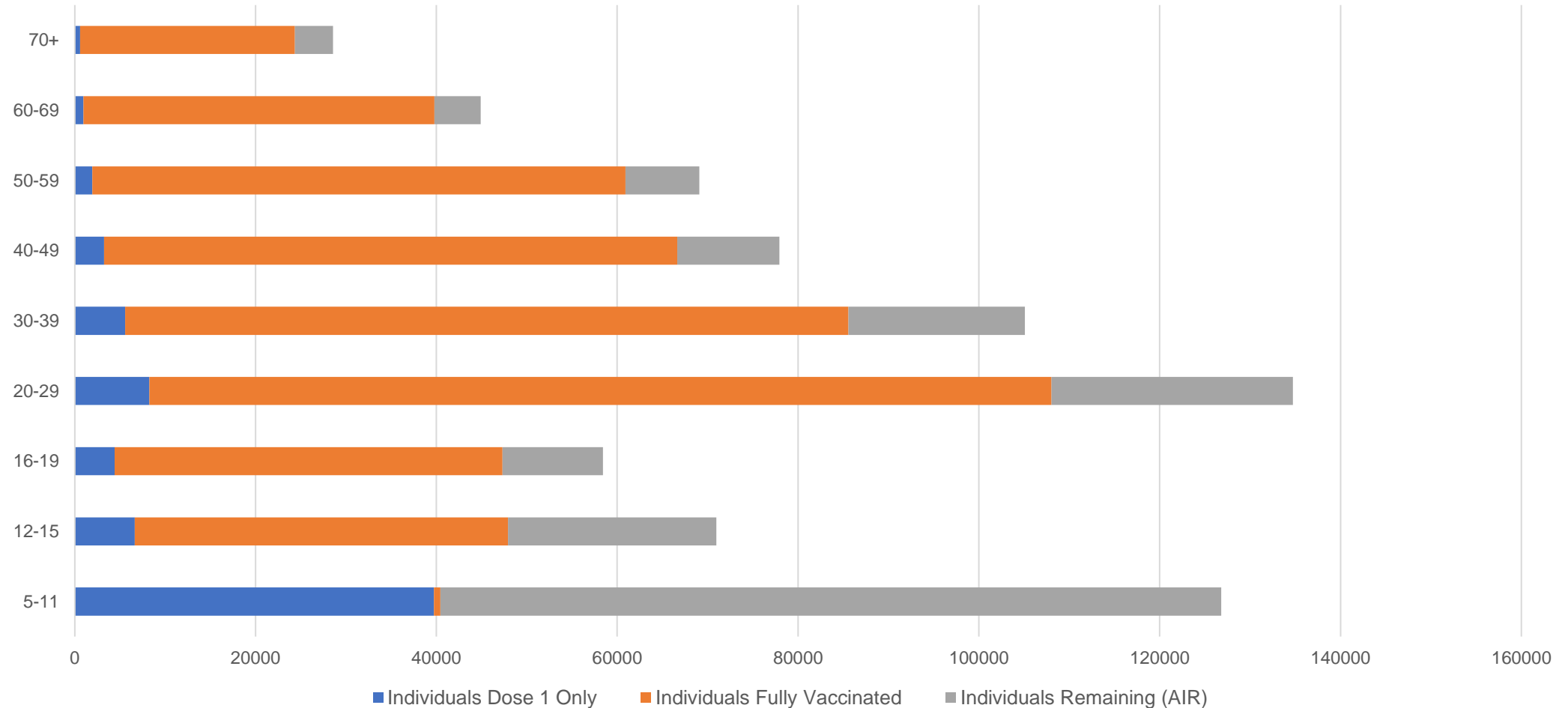
##The above table includes all identified Aboriginal and Torres Strait Islander people who are aged 16 and above by their state of residence.

# Aboriginal and Torres Strait Islander peoples

## Number of people vaccinated by age

Data as at:  
01 Mar 2022  
Updated weekly

Australia's COVID-19  
Vaccine Roadmap



Source: Australian Immunisation Register

# Commonwealth primary care

Data as at:  
03 Mar 2022

Australia's COVID-19  
Vaccine Roadmap



## Primary care vaccine administration sites

<b>5,776</b>	<b>127</b>	<b>177</b>	<b>3,558</b>
GPs	CVCs	ACCHS	Pharmacies



**32,970,592** total vaccine doses administered  
primary care settings as at 03 March  
**+ 70,377** recorded in the last 24 hours

## Primary care vaccinations by provider type

	Doses administered	Daily increase	7 day increase
General Practice* includes other Commonwealth	26,897,173	43,737	280,497
Pharmacy	6,073,419	26,640	171,024

**NSW**  
**11,485,748**  
(+18,836 daily increase)

**VIC**  
**8,233,020**  
(+16,743 daily increase)

**QLD**  
**6,348,634**  
(+11,267 daily increase)

**WA**  
**3,370,648**  
(+14,793 daily increase)

**TAS**  
**605,247**  
(+2,027 daily increase)

**SA**  
**1,955,302**  
(+4,579 daily increase)

**ACT**  
**521,001**  
(+668 daily increase)

**NT**  
**197,772**  
(+638 daily increase)

**253,220**

doses administered to persons  
residing in other territories or with  
missing residential information

\*General practice includes Commonwealth Vaccination Clinics, Aboriginal Community Health Centres, Royal Flying Doctor Service and other Commonwealth vaccination facilities

Source: Australian Immunisation Register

Data as at:  
03 Mar 2022

# Commonwealth aged care and disability doses administered



**1,253,934** (+ 735 last 24 hours)

Total vaccine doses administered in aged care and disability facilities as at 03 March

Number of doses administered as part of the Commonwealth aged and disability care rollout

**NSW**  
**556,482**  
(+27 daily increase)

**VIC**  
**234,196**  
(+88 daily increase)

**QLD**  
**198,129**  
(+54 daily increase)

**WA**  
**102,321**  
(+372 daily increase)

**TAS**  
**22,341**  
(+4 daily increase)

**SA**  
**83,842**  
(+1 daily increase)

**ACT**  
**16,461**  
(-17<sup>#</sup> daily increase)

**NT**  
**7,376**  
(+3 daily increase)

**32,786**

doses administered to persons residing in other territories or with missing residential information

\*Sourced from the Australian Immunisation Register. Includes all persons vaccinated at participating residential aged care, disability and related industry settings.

\*\*State level breakdown indicates the residential location and may not align to the state in which the vaccination occurred.

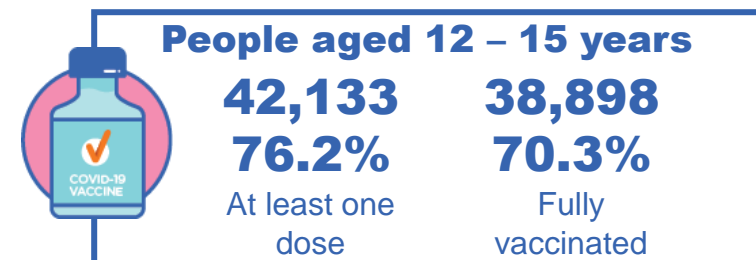
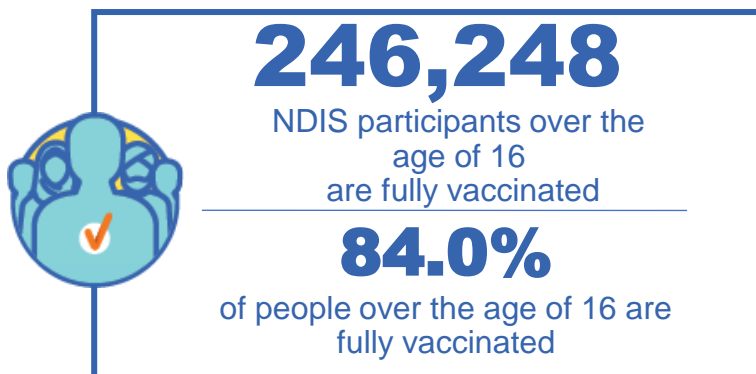
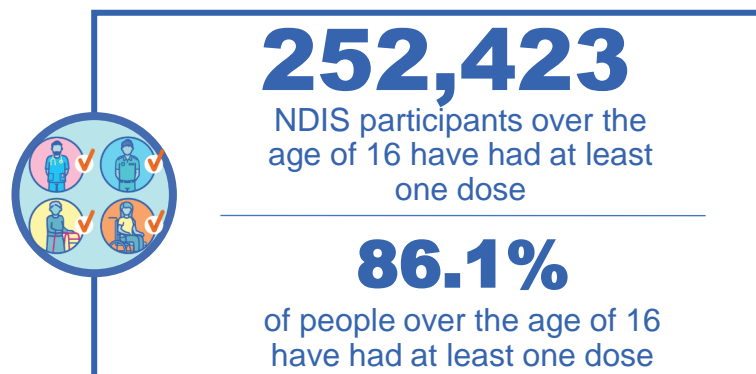
# Numbers are calculated as difference in daily cumulative reported numbers to allow for historical corrections in all data sources. This can occasionally result in negative numbers, such as for ACT where historical details about doses have been updated.

Source: Australian Immunisation Register

# National Disability Insurance Scheme (NDIS) reported vaccinations

Data as at:  
3 March 2022  
Updated weekly

Australia's COVID-19  
Vaccine Roadmap



## NDIS participant vaccinations

	People aged 16+ with at least one dose	People aged 16+ fully vaccinated	% People aged 16+ with at least one dose	% People aged 16+ fully vaccinated
ACT	4,805	4,735	<b>88.6%</b>	<b>87.3%</b>
NSW	77,913	76,564	<b>86.8%</b>	<b>85.3%</b>
NT	2,189	2,092	<b>76.7%</b>	<b>73.3%</b>
QLD	49,530	48,241	<b>84.2%</b>	<b>82.0%</b>
SA	20,529	19,829	<b>83.7%</b>	<b>80.8%</b>
TAS	6,319	6,121	<b>86.0%</b>	<b>83.3%</b>
VIC	67,312	65,949	<b>87.4%</b>	<b>85.6%</b>
WA	23,826	22,717	<b>86.5%</b>	<b>82.5%</b>
National	<b>252,423</b>	<b>246,248</b>	<b>86.1%</b>	<b>84.0%</b>

Source: Linkage between National Disability Insurance Agency data and the Australian Immunisation Register. Total NDIS participant numbers as at 28th February. Australian Immunisation Register data as at 2 March. Includes all participants regardless of residence type.

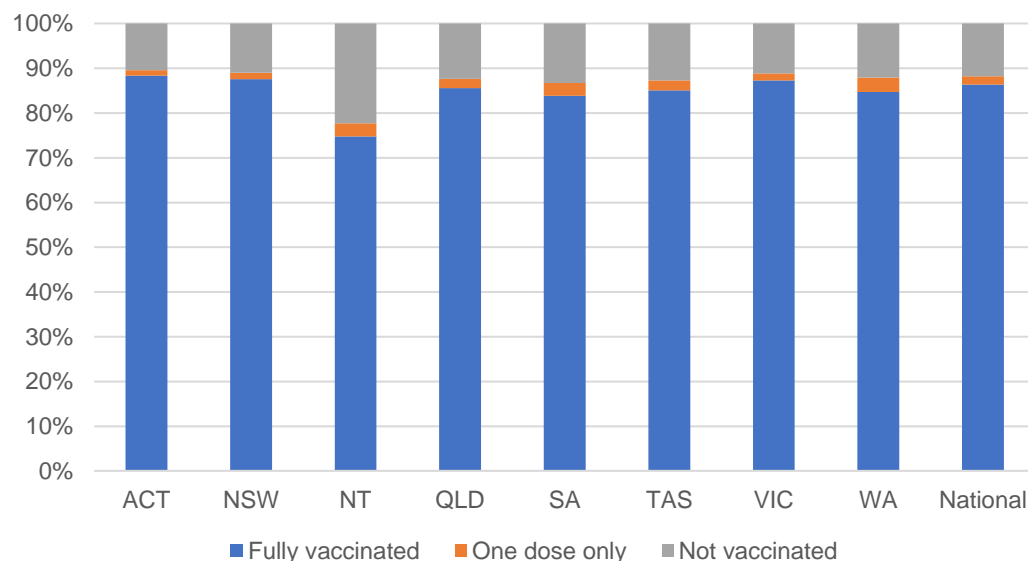
# National Disability Insurance Scheme (NDIS) reported vaccinations

Data as at:  
3 March 2022  
Updated Weekly

Australia's COVID-19  
Vaccine Roadmap

NATIONAL	Total people with at least one dose	People fully vaccinated	Total number of individuals in cohort	% People with at least one dose	% People fully vaccinated
NDIS participants living in disability accommodation	20,582	20,162	23,352	88.1%	86.3%

## NDIS participants in disability and aged care accommodation



Source: Linkage between National Disability Insurance Agency data and the Australian Immunisation Register. Includes participants residing in disability accommodation only.

Source: Total NDIS participant numbers as at 28th February. Participant data as at 2 March. Australian Immunisation Register data as at 2 March. Worker data as at 3 March.

## NDIS workforce vaccinations

	NDIS workers with at least one dose	NDIS workers fully vaccinated	% NDIS workers with at least one dose	% NDIS workers fully vaccinated
NSW	119,625	118,079	97.8%	96.5%
VIC	116,023	107,960	98.2%	91.4%
QLD	68,669	67,604	97.2%	95.7%
WA	32,653	30,181	98.5%	91.0%
SA	35,308	32,000	97.8%	88.7%
TAS	10,756	9,961	99.6%	92.2%
ACT	3,546	3,512	99.6%	98.7%
NT	3,419	3,377	99.5%	98.3%
<b>TOTAL</b>	<b>389,999</b>	<b>372,674</b>	<b>98.0%</b>	<b>93.6%</b>

Source: the NDIS Commission has established a requirement for registered NDIS providers who provide intensive disability support services to report on the vaccination status of workers they employ, or otherwise engage, to deliver NDIS-funded supports and services, and who are required to be vaccinated in accordance with in-force state and territory public health orders. The statistics reflect data reported to the NDIS Commission by registered NDIS providers and should be considered indicative and subject to change

Note: Some registered NDIS providers are yet to report on the vaccination status of their workforce. The NDIS Commission is working with those providers around reporting requirements.

Remaining workers not included include those exempt from vaccination requirements, workers whose vaccination status is not yet verified by the provider (such as workers on leave) and provider reporting anomalies.

# Residential aged care vaccination rollout

Residential aged care facilities status

**100%**  
Commonwealth facilities  
visited (2,534 planned sites)

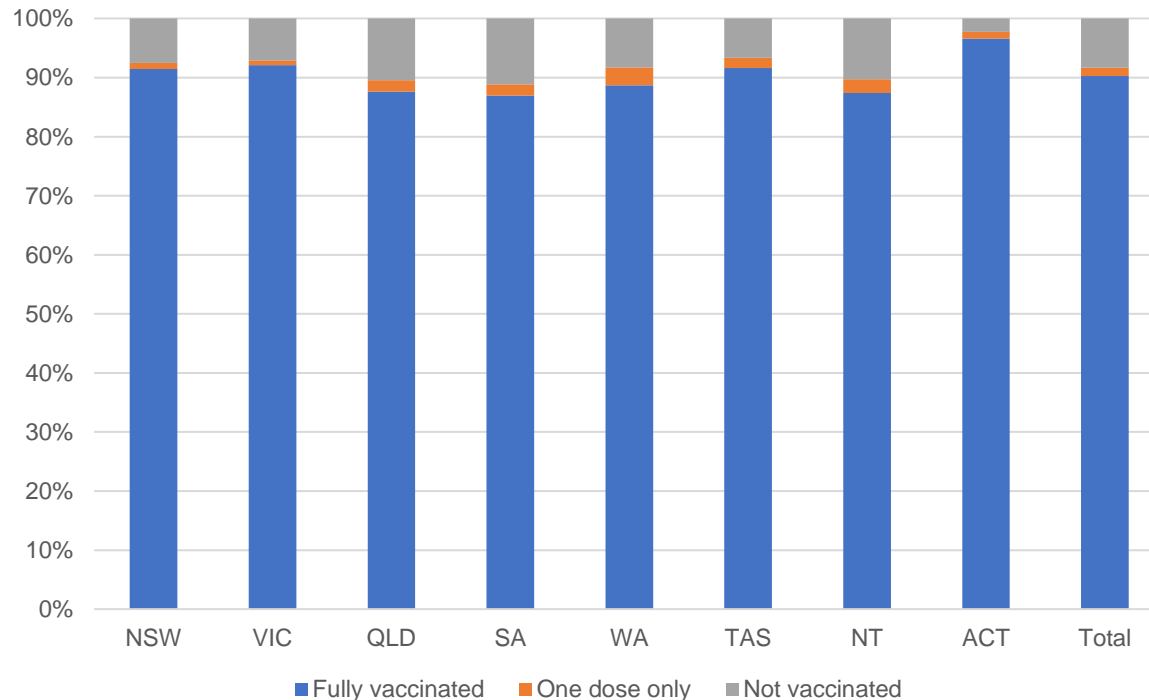
**172,732**  
People fully vaccinated

**175,464**  
People with at least  
one dose

Australia's COVID-19  
Vaccine Roadmap

Data as at:  
03 Mar 2022  
Updated weekly

## Aged care resident vaccinations



## Aged care worker vaccinations

Jurisdictions	Total workers with at least one dose	Workers fully vaccinated	% Workers with at least one dose	% Workers fully vaccinated
NSW	78,624	78,606	98.5%	98.5%
VIC	68,655	68,654	95.9%	95.9%
QLD	48,810	48,807	98.8%	98.8%
SA	26,332	26,306	97.4%	97.3%
WA	23,913	23,912	99.8%	99.8%
TAS	7,812	7,811	100.0%	100.0%
NT	884	884	100.0%	100.0%
ACT	3,048	3,048	100.0%	100.0%
Total	258,078	258,028	97.9%	97.9%

Source: My Aged Care Portal vaccination progress

\*Status updates are provided by facilities at least once per week. Reporting is updated Monday to Friday to encompass different facility updates being made on different days.

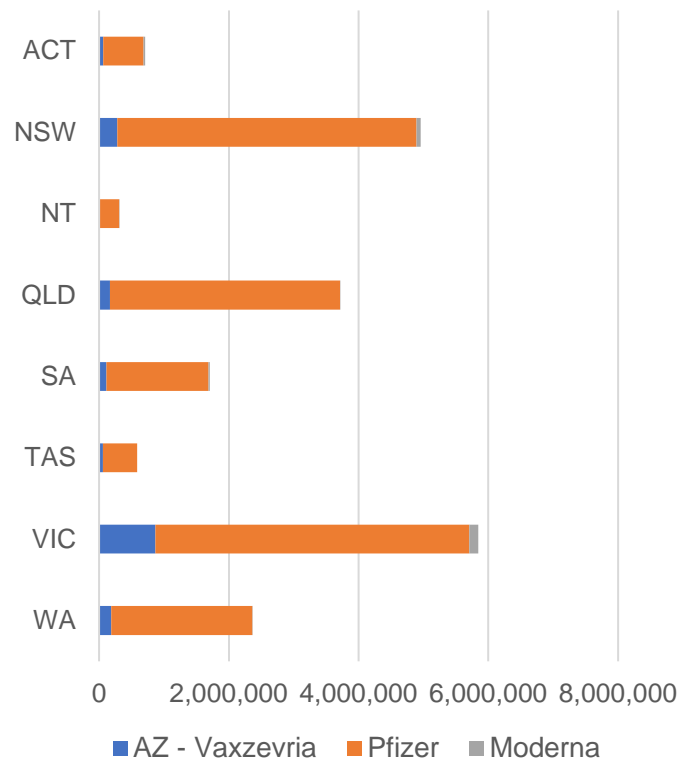
Data is sourced directly from Aged Care Service Providers and is not drawn or closely aligned with data from AIR due to inconsistencies and potential lags in uploading of records.



Data as at:  
03 Mar 2022

## Jurisdiction administered

Total vaccine doses administered in State and Territory clinics as at 03 March



**20,188,888** total vaccine doses administered  
in State and Territory clinics as at 03 March  
+ **16,332** recorded in the last 24 hours  
+ **134,727** recorded in the last 7 days

**NSW**  
**4,956,741**  
(+1,780 daily  
increase)

**VIC**  
**5,847,822**  
(+3,616 daily  
increase)

**QLD**  
**3,713,589**  
(+1,871 daily  
increase)

**WA**  
**2,363,325**  
(+4,357 daily  
increase)

**TAS**  
**585,512**  
(+850 daily  
increase)

**SA**  
**1,706,407**  
(+1,702 daily  
increase)

**ACT**  
**707,349**  
(+1,561 daily  
increase)

**NT**  
**308,143**  
(+595 daily  
increase)

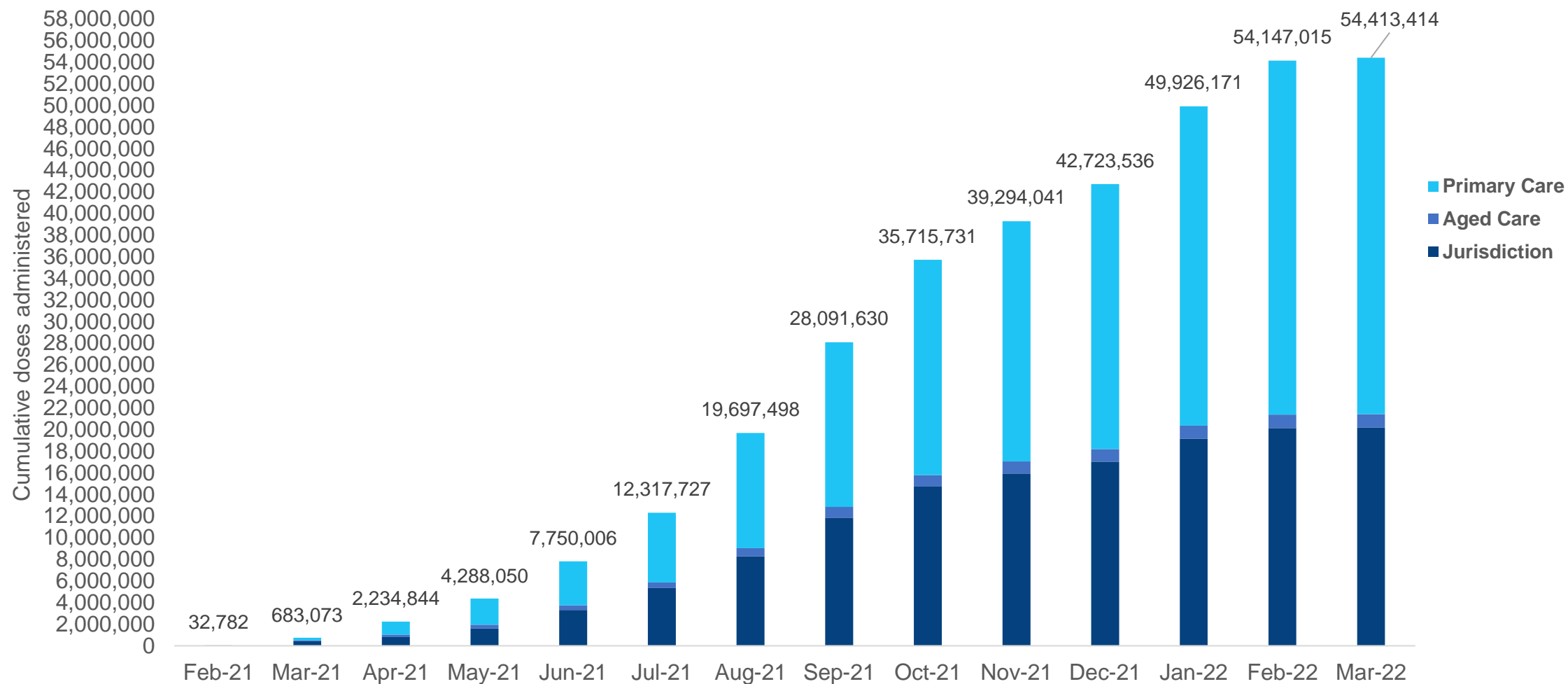
\*Sourced from the Australian Immunisation Register. Numbers are calculated as difference in daily cumulative reported numbers to allow for historical corrections.

Source: Australian Immunisation Register

# Cumulative doses administered by channel

Data as at:  
03 Mar 2022

Australia's COVID-19  
Vaccine Roadmap



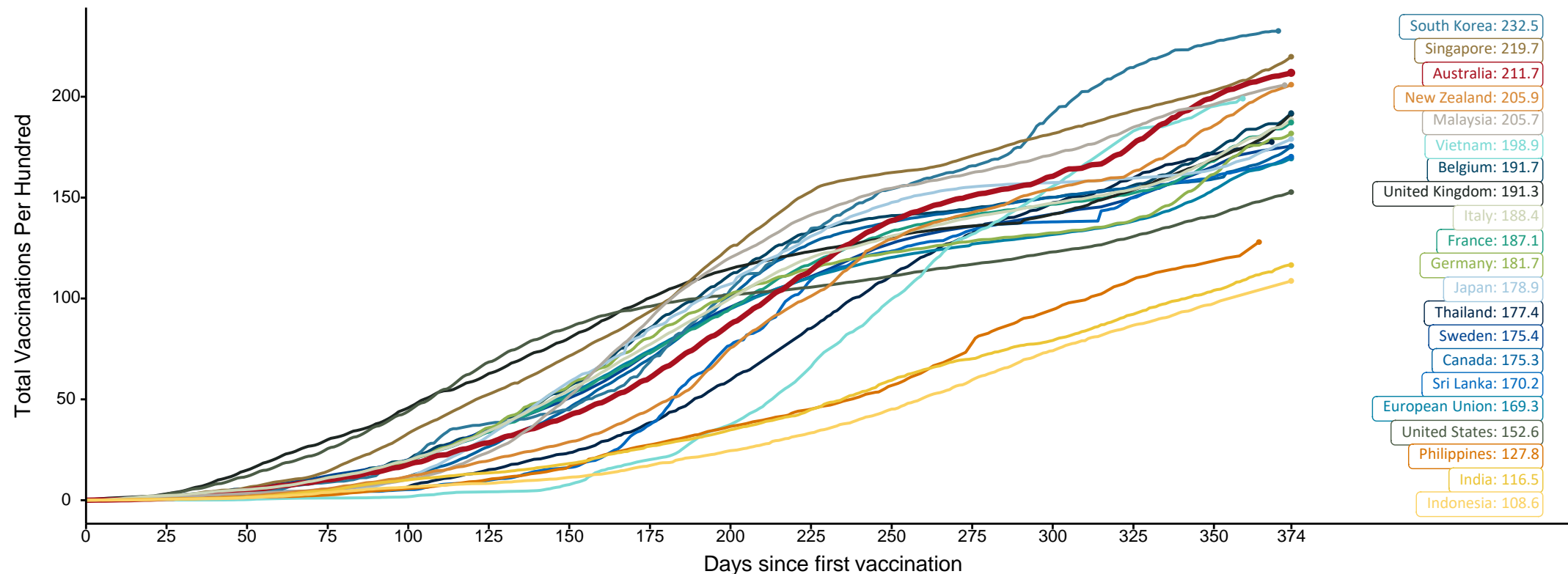
Source: Australian Immunisation Register

# Doses at equivalent stages of rollout (Day 374)

Data as at:  
03 Mar 2022

The x-axis is truncated at the length of Australia's vaccination program. Countries with intermittent reporting have had their doses per 100 imputed to Australia's current stage of rollout. Israel excluded as it is beyond scale of the graph

Cumulative doses administered (03 Mar): **54,413,414**

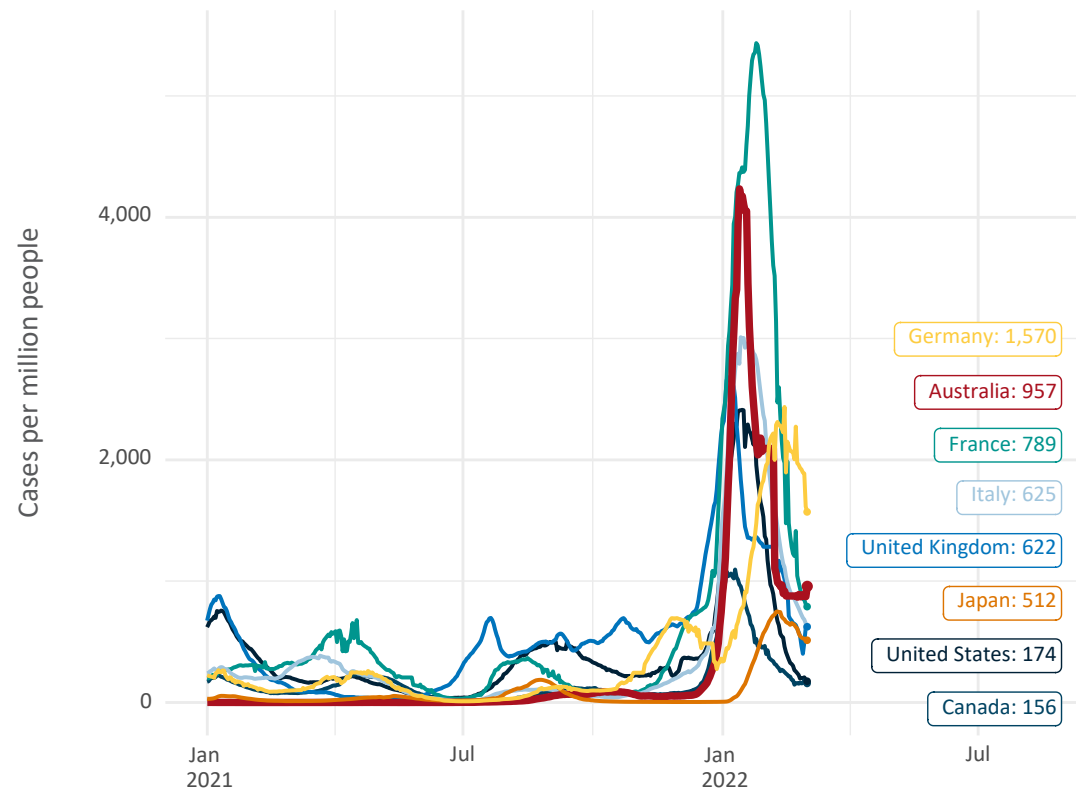


Note: From 11 January 2022, data for Australia includes all doses administered to people 5 and over. Prior to 11 January, data was for 12 and over.  
Source: Department of Health (Australia), Our World in Data (international)  
Latest data: 03 March

Data as at:  
03 Mar 2022

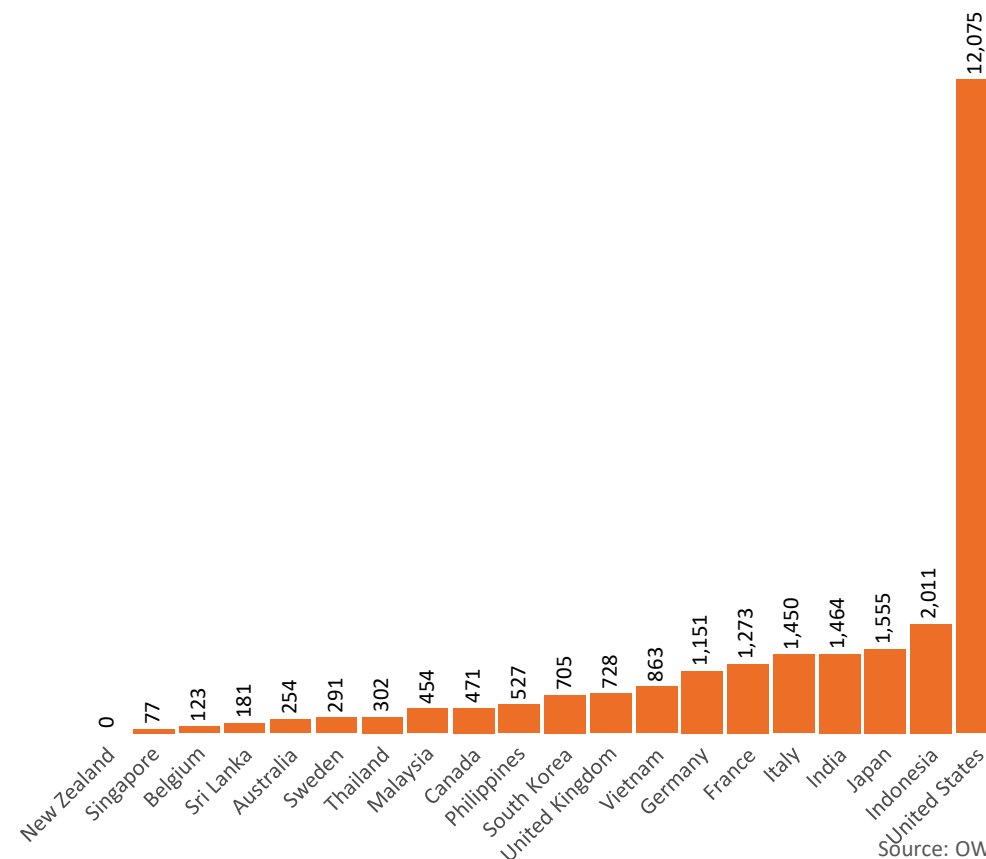
# International data – COVID-19

New daily cases per million in 2021, Australia and G7 countries  
Smoothed - 7 day average



Source: OWID  
Data downloaded: 04 Mar 2022 08:05  
Latest data: 02 Mar 2022

COVID-19 deaths in past 7 days - Australia and select countries



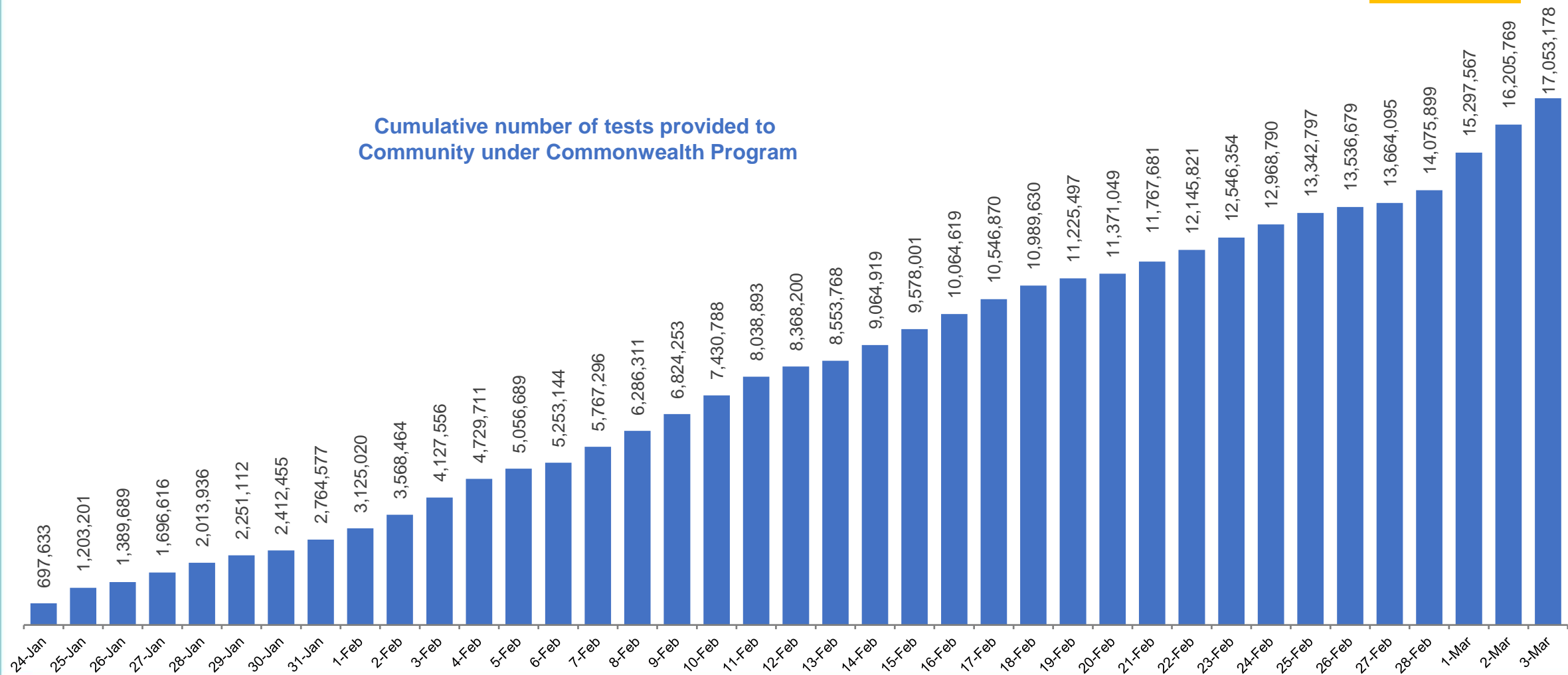
Source: OWID  
Data downloaded: 04 Mar 2022 08:05  
Latest data: 02 Mar 2022

# Concessional rapid antigen test program

5,580 pharmacies have delivered over 17 million rapid antigen tests to more than 3.2m eligible concession card holders under the Government's concessional rapid antigen test program.

Data as at  
3 Mar 2022

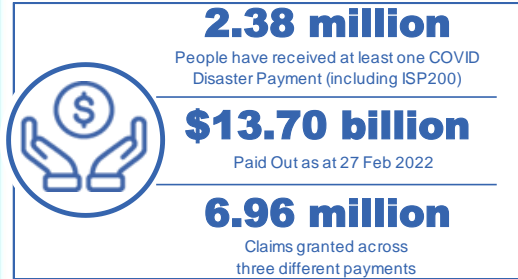
Cumulative number of tests provided to  
Community under Commonwealth Program



# Pandemic Response Payments

Australia's COVID-19  
Vaccine Roadmap

Data as at midnight: 27 Feb 2022  
Updated weekly



<b>COVID Disaster Payment:</b>	5.89 million claims received - 2.19 million individuals paid a total of \$12.59 billion.
<b>\$200 Income Support Payment:</b>	353,000 claims received - 183,000 individuals paid a total of \$268.9 million.
<b>Pandemic Leave Disaster Payment:</b>	1,163,000 claims received - 752,000 individuals paid a total of \$837.1 million.



## COVID Disaster Payment

assisting during a lockdown event in a Commonwealth hotspot.

## Income Support Payment \$200

for income support recipients who lost at least 8 hours of work.

## Pandemic Leave Disaster Payment

for those who have to self-isolate, quarantine or care.

For more information visit:  
[servicesaustralia.gov.au](https://servicesaustralia.gov.au)

## COVID-19 DISASTER PAYMENTS

### Northern Territory

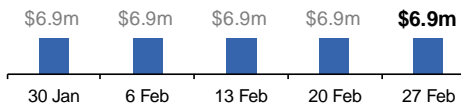
Lockdown (#3) from 16 Nov to 22 Nov  
Claiming period ended 27 Dec

**7,500 people have received at least one COVID Disaster Payment.**

**\$6.9m paid out as at 27 Feb 2022.**

**\$0 paid in initial payments in the week ending 27 Feb 2022.**

Cumulative payments made by Territory since activation on 25 Aug 2021.



### Victoria

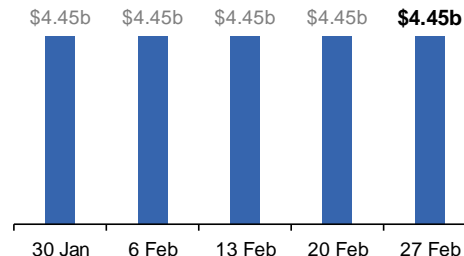
Lockdown (#6) from 6 Aug to 28 Oct  
Claiming period ended 9 Dec

**745,000 people have received at least one COVID Disaster Payment.**

**\$4.45b paid out as at 27 Feb 2022.**

**\$0 paid in initial and reoccurring payments in the week ending 27 Feb 2022.**

Cumulative payments made by State since activation on 8 Jun 2021.



### New South Wales

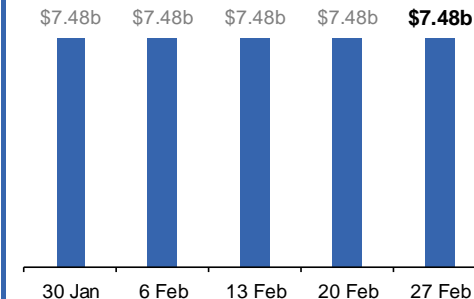
Lockdown from 24 Jun to 10 Oct  
Claiming period ended 27 Nov

**1.08m people have received at least one COVID Disaster Payment.**

**\$7.48b paid out as at 27 Feb 2022.**

**\$0 paid in initial and reoccurring payments in the week ending 27 Feb 2022.**

Cumulative payments made by State since activation on 1 Jul 2021.



### Australian Capital Territory

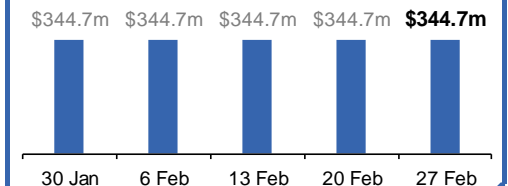
Lockdown from 12 Aug to 14 Oct  
Claiming period ended 25 Nov

**65,000 people have received at least one COVID Disaster Payment.**

**\$344.7m paid out as at 27 Feb 2022.**

**\$0 paid in initial and reoccurring payments in the week ending 27 Feb 2022.**

Cumulative payments made by Territory since activation on 20 Aug 2021.



# Pandemic Response Payments (continued)

Data as at midnight: 27 Feb 2022  
Updated weekly

## COVID-19 DISASTER PAYMENTS

### Tasmania

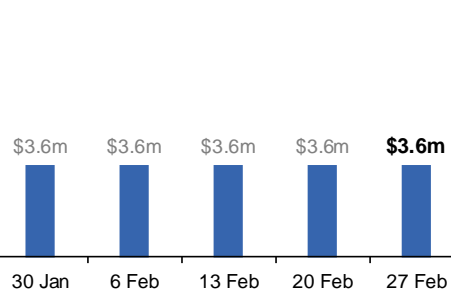
Lockdown from 15 Oct to 18 Oct  
Claiming period ended 12 Nov

**6,900 people have received at least one COVID Disaster Payment.**

**\$3.6m paid out as at 27 Feb 2022.**

**\$0 paid in initial and reoccurring payments in the week ending 27 Feb 2022.**

Cumulative payments made by State since activation on 22 Oct 2021.



### Queensland

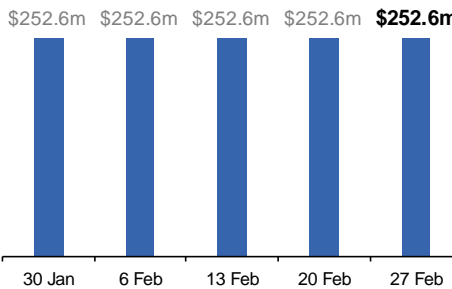
Lockdown from 31 Jul to 11 Aug  
Claiming period ended 28 Aug

**196,000 people have received at least one COVID Disaster Payment.**

**\$252.6m paid out as at 27 Feb 2022.**

**\$0 paid in initial and reoccurring payments in the week ending 27 Feb 2022.**

Cumulative payments made by State since activation on 7 Aug 2021.



### South Australia

Lockdown from 21 to 27 Jul  
Claiming period ended 17 Aug

**86,000 people have received at least one COVID Disaster Payment.**

**\$48.2m paid out as at 27 Feb 2022.**

**\$0 paid in initial and reoccurring payments in the week ending 27 Feb 2022.**

Cumulative payments made by State since activation on 28 Jul 2021.

