



Australian Government
Operation COVID Shield

COVID-19 Vaccine Roll-out

31 March 2022

Data as at:
30 Mar 2022

Total vaccine doses



56,422,055 total vaccine
doses administered nationally as at 30 March
+62,616 recorded in the last 24 hours



19,960,032

people have had at least one
dose

>95%

of people over the age of 16
have had at least one dose



19,615,002

people are fully vaccinated

>95%

of people over the age of 16 are
fully vaccinated



12,877,035

people over the age of 16
who have received more
than two doses

NSW
17,525,010
(+16,524 daily
increase)

VIC
14,879,325
(+14,392 daily
increase)

QLD
10,688,756
(+13,302 daily
increase)

WA
6,165,748
(+8,653 daily
increase)

TAS
1,268,332
(+2,120 daily
increase)

SA
3,885,528
(+4,489 daily
increase)

ACT
1,457,523
(+2,234 daily
increase)

NT
551,833
(+902 daily
increase)

*Administration state breakdown indicates state in which a vaccine was administered

**Overall dose count includes instances of more than three doses per person in a small number of cases.

Source: Australian Immunisation Register

Booster Vaccinations

Australia's COVID-19
Vaccine Roadmap

Data as at:
30 Mar 2022



189,949

Indigenous people who have
received more than two doses

51.5%

of eligible population (368,693)



163,621

Aged Care Residents who have
received more than two doses##

93.9%

of eligible population (174,227)



173,662

NDIS participants

20,585

NDIS residents

who have received more than two doses#

72.4%

of eligible population
(239,000)

87.1%

of eligible population
(23,000)



12,877,035 total people who
have received more than two doses nationally

+36,920 recorded in the last 24 hours

67.8% of people who are eligible (18,981,368)
have received more than two doses

NSW	People	% of Eligible
Cumulative	3,940,870	64.0%
Daily increase	9,958	

VIC	People	% of Eligible
Cumulative	3,484,417	69.4%
Daily increase	8,011	

QLD	People	% of Eligible
Cumulative	2,226,763	62.0%
Daily increase	8,010	

WA	People	% of Eligible
Cumulative	1,552,615	86.1%
Daily increase	4,850	

SA	People	% of Eligible
Cumulative	911,507	71.4%
Daily increase	2,593	

TAS	People	% of Eligible
Cumulative	292,424	71.0%
Daily increase	1,356	

ACT	People	% of Eligible
Cumulative	258,458	75.2%
Daily increase	548	

NT	People	% of Eligible
Cumulative	109,811	68.3%
Daily increase	543	

100,170

doses administered to persons
residing in other territories or with
missing residential information

*People may belong to multiple groups and could be represented in the above breakdowns multiple times.
NDIS participants data as at 29 March 2022. ## Aged Care Residents data as at 30 March 2022.

Source: Australian Immunisation Register

Vaccinations by residential location

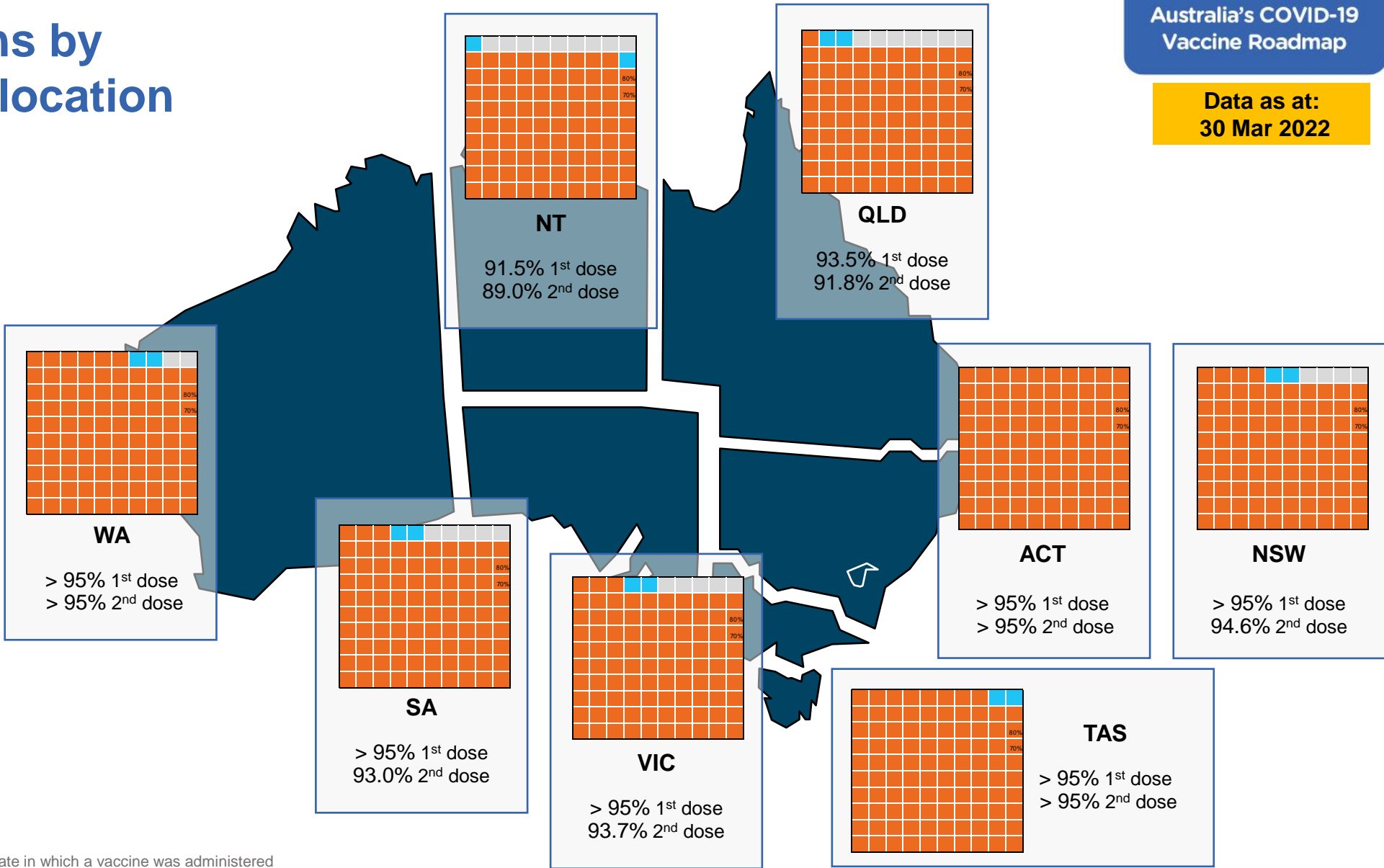
Data as at: 30 Mar 2022

First doses

Age	Today	4 weeks ago	8 weeks ago
16+	>95%	>95%	>95%
50+	>95%	>95%	>95%
70+	>95%	>95%	>95%

Fully vaccinated

Age	Today	4 weeks ago	8 weeks ago
16+	>95%	94.7%	93.9%
50+	>95%	>95%	>95%
70+	>95%	>95%	>95%



*Residential state may differ from the state in which a vaccine was administered

Commonwealth and Jurisdiction vaccine doses administered

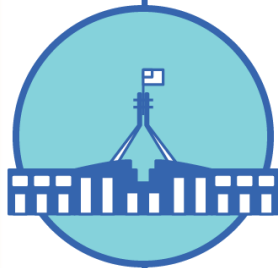
Data as at:
30 Mar 2022



56,422,055 total vaccine
doses administered nationally as at 30 March
+ 62,616 recorded in the last 24 hours



20,723,718
doses administered by state
and territory facilities
+ 13,677
recorded in the last 24 hours



35,698,337
doses administered by
commonwealth facilities
+ 48,939
recorded in the last 24 hours

34,431,851 total vaccine doses
administered in primary care settings
1,266,486 total vaccine doses
administered in aged care and disability
settings

NSW	Jurisdictions	Commonwealth
Cumulative	5,048,311	12,476,699
Daily increase	2,207	14,317

VIC	Jurisdictions	Commonwealth
Cumulative	5,982,793	8,896,532
Daily increase	3,249	11,143

QLD	Jurisdictions	Commonwealth
Cumulative	3,798,816	6,889,940
Daily increase	2,105	11,197

WA	Jurisdictions	Commonwealth
Cumulative	2,441,061	3,724,687
Daily increase	2,041	6,612

TAS	Jurisdictions	Commonwealth
Cumulative	610,724	657,608
Daily increase	669	1,451

SA	Jurisdictions	Commonwealth
Cumulative	1,766,367	2,119,161
Daily increase	1,412	3,077

ACT	Jurisdictions	Commonwealth
Cumulative	751,613	705,910
Daily increase	1,494	740

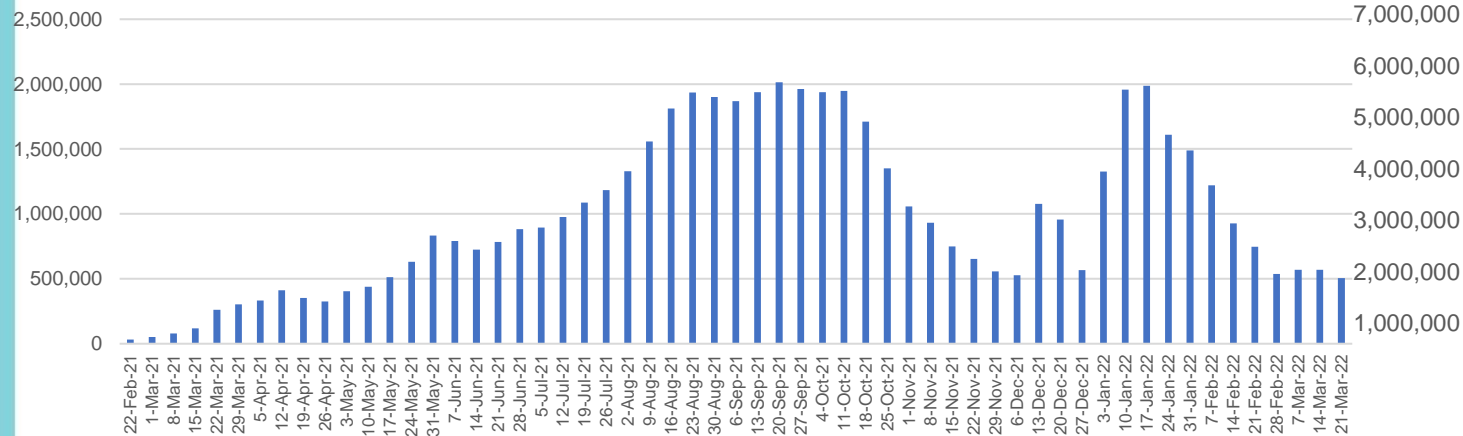
NT	Jurisdictions	Commonwealth
Cumulative	324,033	227,800
Daily increase	500	402

Vaccine milestone charts

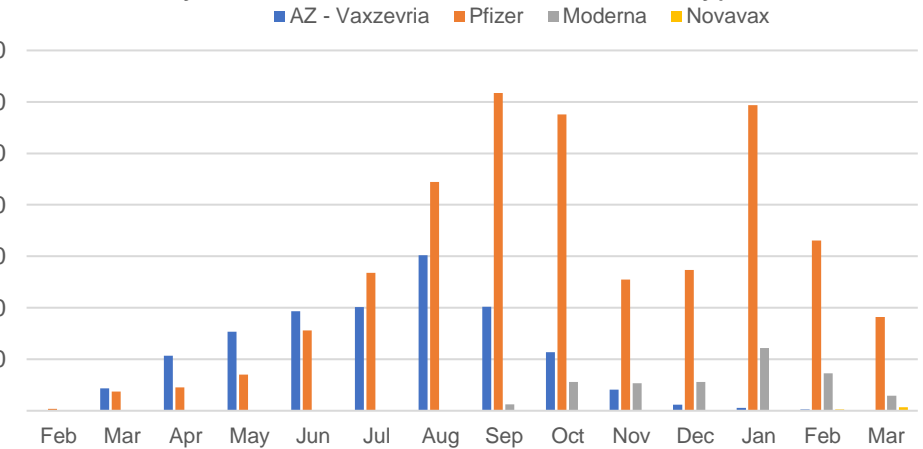
Data as at:
30 Mar 2022

Australia's COVID-19
Vaccine Roadmap

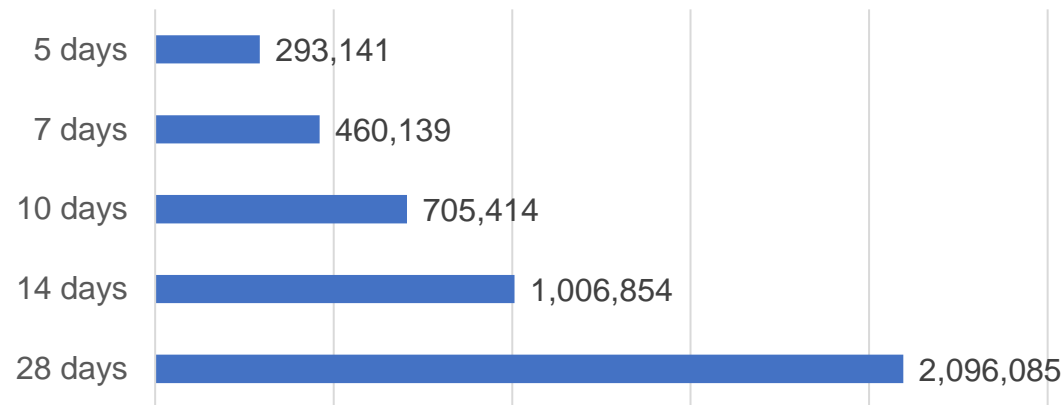
Doses Administered by Week



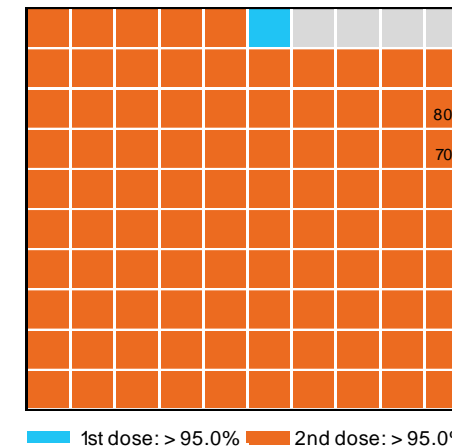
Doses by administration month and vaccine type



Doses Reported



Eligible population percentage coverage



*Each square represents 1% of the national population.
Squares are filled as milestones are achieved.

*Sourced from the Australian Immunisation Register.

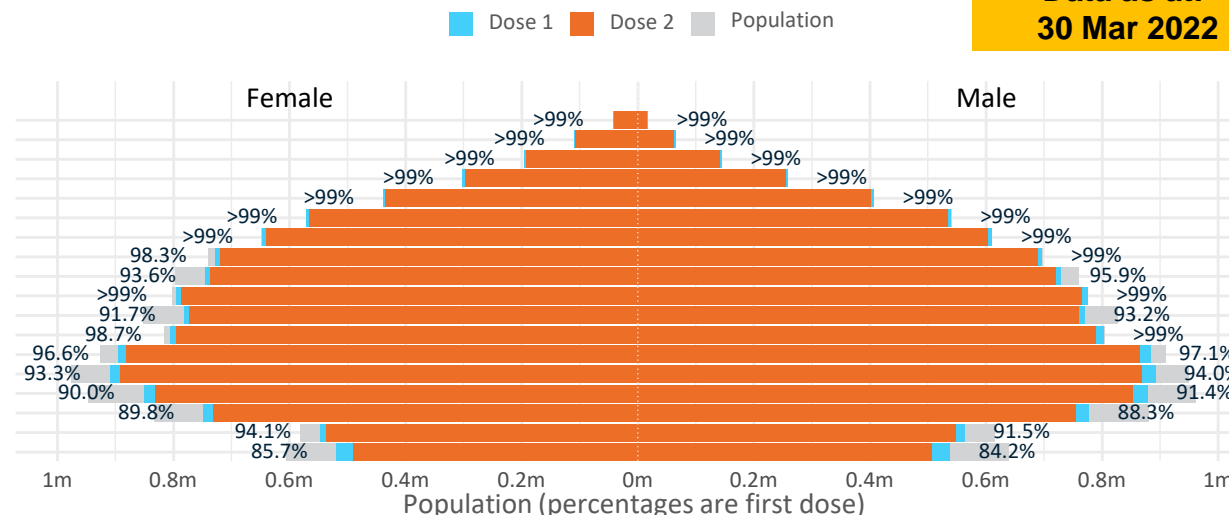
Data as at:
30 Mar 2022

Doses by age and sex

First and second doses by age and sex

	16+	50+	12-15	5-11
Dose 1	96.80% (19,960,032 doses / 20,619,959 people)	>99% (8,823,613 doses / 8,749,703 people)	84.94% (1,056,604 doses / 1,243,990 people)	52.26% (1,189,748 doses / 2,276,638 people)
Dose 2	95.13% (19,615,002 doses / 20,619,959 people)	>99% (8,713,466 doses / 8,749,703 people)	80.03% (995,562 doses / 1,243,990 people)	26.76% (609,191 doses / 2,276,638 people)

Age	Dose 1	Dose 2
95+	60,324 (>99%)	56,923 (>99%)
90-94	174,909 (>99%)	169,115 (>99%)
85-89	340,534 (>99%)	333,299 (>99%)
80-84	559,572 (>99%)	551,988 (>99%)
75-79	845,383 (>99%)	836,712 (>99%)
70-74	1,111,914 (>99%)	1,100,729 (>99%)
65-69	1,259,108 (>99%)	1,244,571 (98.9%)
60-64	1,425,655 (>99%)	1,408,995 (98.1%)
55-59	1,475,210 (94.8%)	1,458,065 (93.7%)
50-54	1,571,004 (>99%)	1,553,069 (>99%)
45-49	1,551,965 (92.6%)	1,532,128 (91.4%)
40-44	1,610,723 (>99%)	1,585,300 (97.8%)
35-39	1,782,616 (97.1%)	1,749,291 (95.3%)
30-34	1,809,472 (94.1%)	1,766,546 (91.8%)
25-29	1,739,562 (91.2%)	1,691,433 (88.7%)
20-24	1,531,420 (89.4%)	1,491,487 (87.1%)
16-19	1,110,661 (92.9%)	1,085,351 (90.8%)
12-15	1,056,604 (84.9%)	995,562 (80.0%)

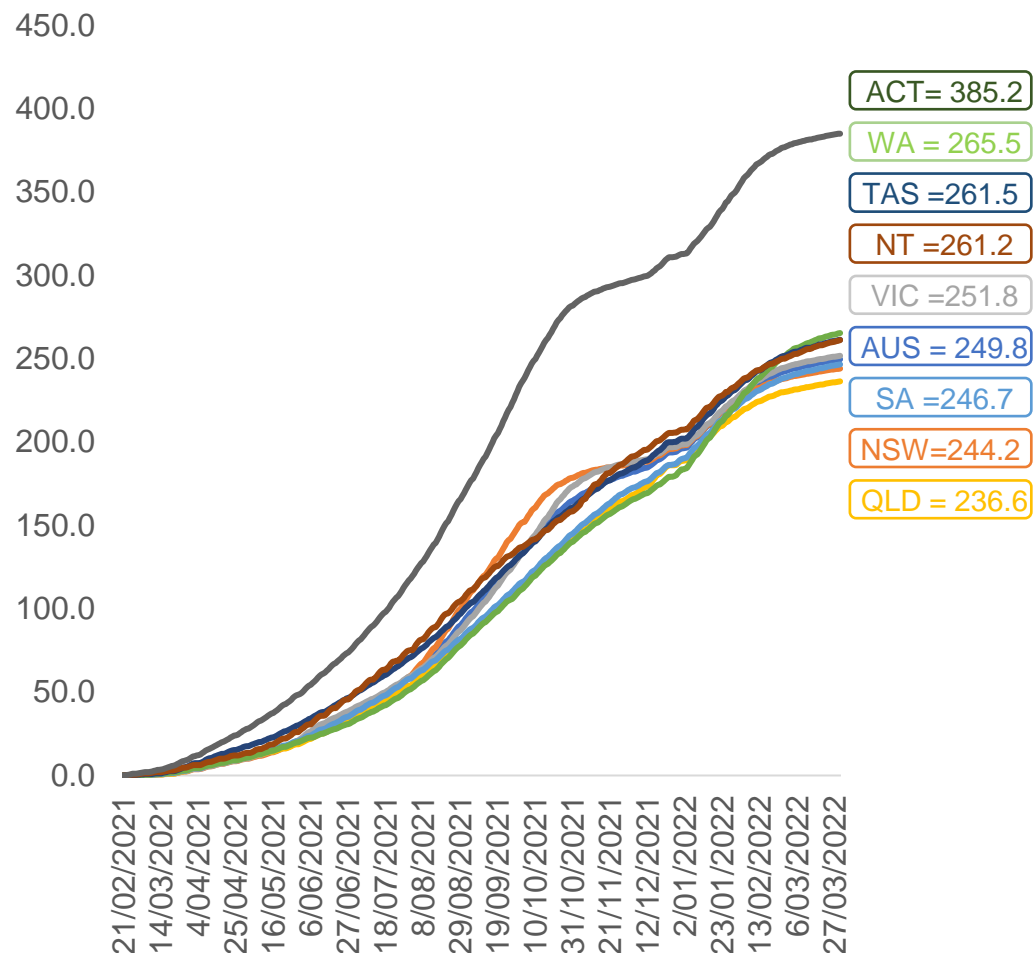


	AUS	ACT	NSW	NT	QLD	SA	TAS	VIC	WA
16 and over - dose 1	19,960,032	351,607	6,304,822	174,342	3,843,337	1,370,249	443,478	5,144,371	2,084,840
16 and over - dose 2	19,615,002	346,195	6,209,854	169,529	3,773,841	1,339,028	433,946	5,068,274	2,047,899
16 and over - population	20,619,959*	344,037	6,565,651	190,571	4,112,707	1,440,400	440,172	5,407,574	2,114,978
16 and over % with dose 1	96.80%	>99%	96.03%	91.48%	93.45%	95.13%	>99%	95.13%	98.58%
16 and over % with dose 2	95.13%	>99%	94.58%	88.96%	91.76%	92.96%	98.59%	93.73%	96.83%
5 to 11 - dose 1	1,189,748	31,783	354,084	13,116	207,971	83,886	28,690	324,277	138,536
5 to 11 - dose 2	609,191	21,073	188,052	5,775	106,749	43,774	18,512	163,424	59,083
5 to 11 - population	2,276,638	39,789	716,460	24,750	478,731	148,816	45,033	578,499	244,154
5 to 11 % with dose 1	52.26%	79.88%	49.42%	52.99%	43.44%	56.37%	63.71%	56.05%	56.74%
5 to 11 % with dose 2	26.76%	52.96%	26.25%	23.33%	22.30%	29.41%	41.11%	28.25%	24.20%
12 to 15 - dose 1	1,056,604	20,089	325,675	10,913	207,539	68,493	22,929	276,185	115,595
12 to 15 - dose 2	995,562	19,427	310,135	9,768	193,545	64,543	21,720	263,089	105,360
12 to 15 - population	1,243,990	19,693	390,330	13,060	270,146	82,747	26,308	308,611	132,869
12 to 15 % with dose 1	84.94%	>99%	83.44%	83.56%	76.82%	82.77%	87.16%	89.49%	87.00%
12 to 15 % with dose 2	80.03%	98.65%	79.45%	74.79%	71.64%	78.00%	82.56%	85.25%	79.30%

*National population will not equal sum of listed jurisdictions due to a small number of people counted in national population residing in some 'other' territories. Sum of state doses will not add to national total as some records are unable to be geocoded to a State or Territory.
Doses sourced from Australian Immunisation Register, population from ABS ERP June 2020

Vaccinations by location

Cumulative total doses administered vs eligible state populations*

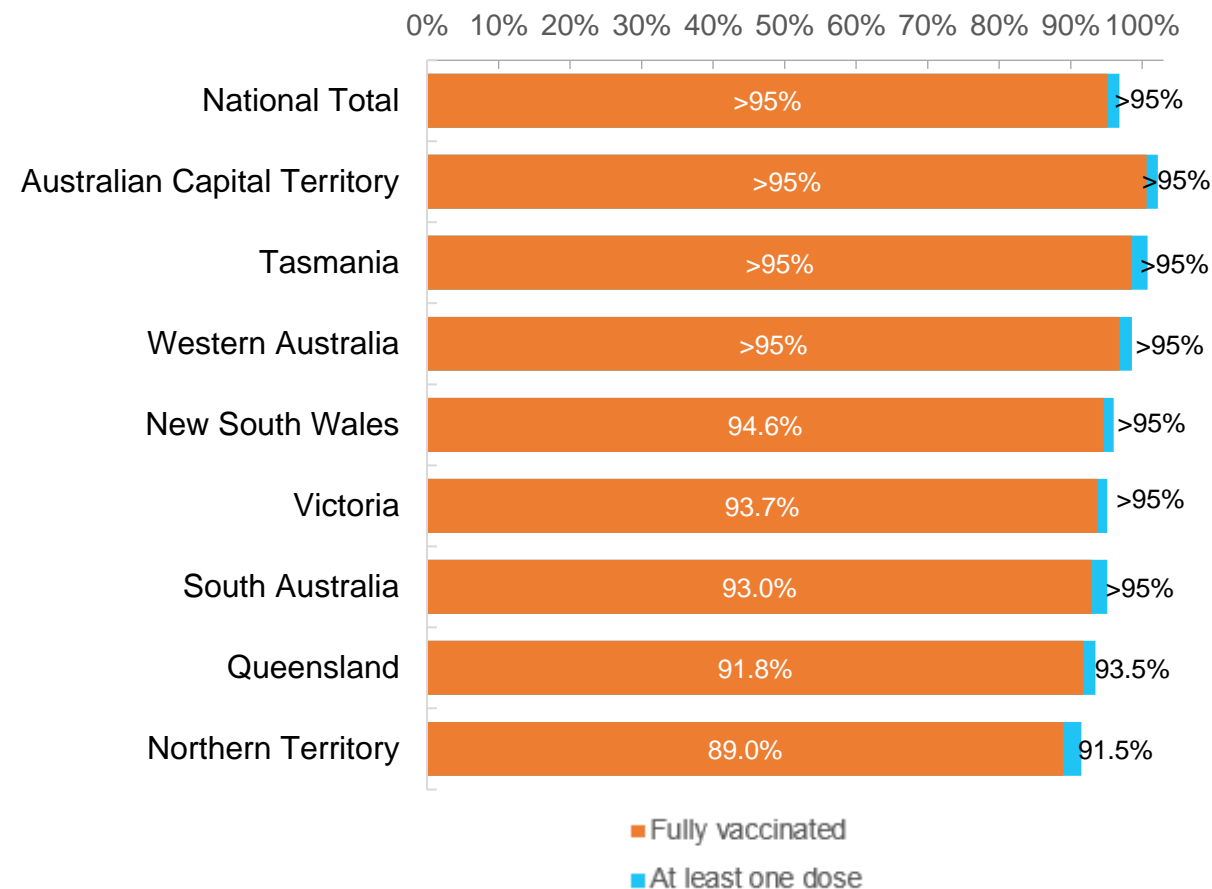


*Not an indication of percentage vaccinated, numbers will exceed 100 due to multiple doses required per person of the population. All doses are included for those aged 12 and above, and are based on vaccination provider location.

Data as at:
30 Mar 2022

Australia's COVID-19
Vaccine Roadmap

First and Second Doses by residential location



Aboriginal and Torres Strait Islander peoples

Number of people vaccinated

Data as at:
29 Mar 2022
Updated weekly

Australia's COVID-19
Vaccine Roadmap



436,084

people over the age of 16
have had at least one dose

84.2%

of people over the age of 16
have had at least one dose



414,780

people over the age of 16
are fully vaccinated

80.0%

of people over the age of 16 are
fully vaccinated



People aged 12 – 15 years

48,579

42,396

68.4%

At least one dose

59.7%

Fully vaccinated

178 Aboriginal community controlled health services (ACCHS)

0#

50

27

44

12

3

21

21

ACT

NSW

NT

QLD

SA

TAS

VIC

WA

Medicare Address State ^{##}	Individuals Dose 1	Individuals Dose 1 %	Individuals Dose 2	Individuals Dose 2 %
Australian Capital Territory	4,832	90.9%	4,709	88.6%
New South Wales	134,469	86.6%	131,243	84.6%
Northern Territory	42,185	89.3%	39,809	84.3%
Queensland	115,088	81.2%	109,024	76.9%
South Australia	19,764	79.6%	18,238	73.4%
Tasmania	13,863	88.4%	13,424	85.6%
Victoria	35,253	89.7%	34,396	87.5%
Western Australia	53,370	85.3%	48,462	77.5%
Unknown/Other Territories	17,260	65.7%	15,475	58.9%
Totals	436,084	84.2%	414,780	80.0%

Source: Australian Immunisation Register

*Identifying as Aboriginal and Torres Strait Islander is optional and the estimated population may be under reported.

**Includes all Aboriginal and Torres Strait Islander peoples who have received a vaccination, not limited to those administered in an ACCHS setting

#ACCHS in the ACT are currently operating as a Commonwealth Vaccine Clinics so not included to avoid double counting

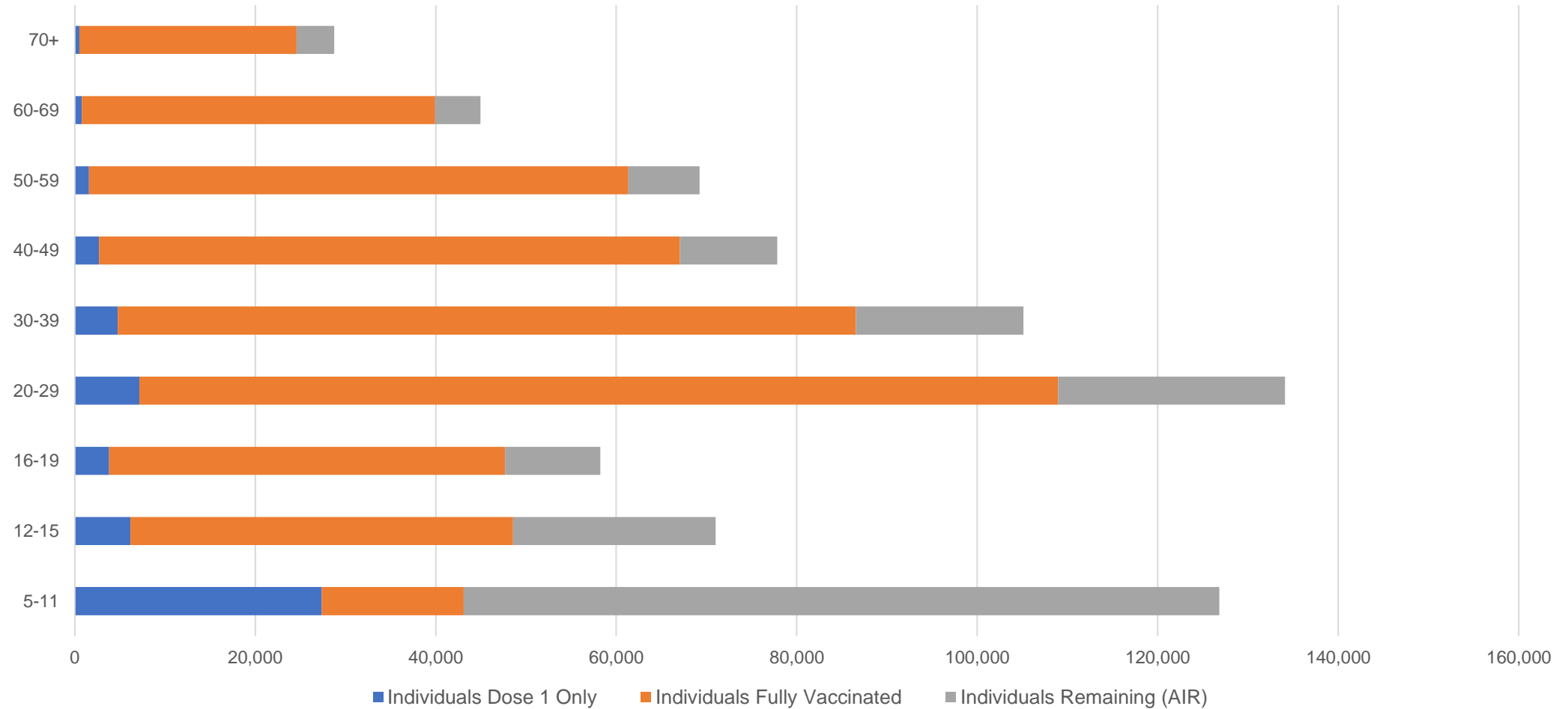
##The above table includes all identified Aboriginal and Torres Strait Islander people who are aged 16 and above by their state of residence.

Aboriginal and Torres Strait Islander peoples

Number of people vaccinated by age

Data as at:
29 Mar 2022
Updated weekly

Australia's COVID-19
Vaccine Roadmap



Source: Australian Immunisation Register

Commonwealth primary care

Data as at:
30 Mar 2022

Australia's COVID-19
Vaccine Roadmap



Primary care vaccine administration sites

5,793	128	178	3,587
GPs	CVCs	ACCHS	Pharmacies



34,431,851 total vaccine doses administered
primary care settings as at 30 March
+ 48,095 recorded in the last 24 hours

Primary care vaccinations by provider type

	Doses administered	Daily increase	7 day increase
General Practice* includes other Commonwealth	27,852,389	30,632	214,582
Pharmacy	6,579,462	17,463	116,679

NSW
11,927,083
(+12,850 daily increase)

VIC
8,588,853
(+10,561 daily increase)

QLD
6,616,517
(+10,297 daily increase)

WA
3,596,178
(+6,262 daily increase)

TAS
638,044
(+1,403 daily increase)

SA
2,042,310
(+2,809 daily increase)

ACT
541,400
(+619 daily increase)

NT
206,442
(+356 daily increase)

275,024

doses administered to persons
residing in other territories or with
missing residential information

*General practice includes Commonwealth Vaccination Clinics, Aboriginal Community Health Centres, Royal Flying Doctor Service and other Commonwealth vaccination facilities

Source: Australian Immunisation Register

Data as at:
30 Mar 2022

Commonwealth aged care and disability doses administered



1,266,486 (+ 844 last 24 hours)

Total vaccine doses administered in aged care and disability facilities as at 30 March

Number of doses administered as part of the Commonwealth aged and disability care rollout

NSW
558,477
(+220 daily increase)

VIC
234,853
(-13# daily increase)

QLD
201,130
(+387 daily increase)

WA
106,602
(+46 daily increase)

TAS
22,477
(+6 daily increase)

SA
83,930
(-11# daily increase)

ACT
16,734
(+28 daily increase)

NT
7,485
(-1# daily increase)

34,798

doses administered to persons
residing in other territories or with
missing residential information

Source: Australian Immunisation Register

*Sourced from the Australian Immunisation Register. Includes all persons vaccinated at participating residential aged care, disability and related industry settings.

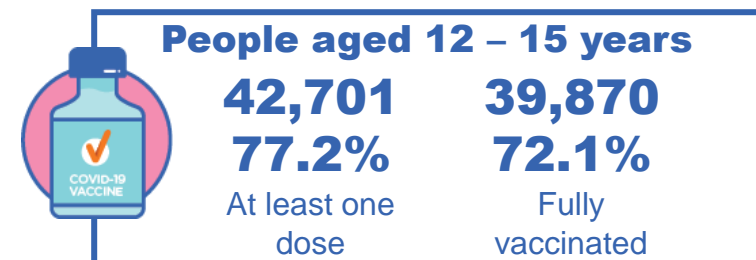
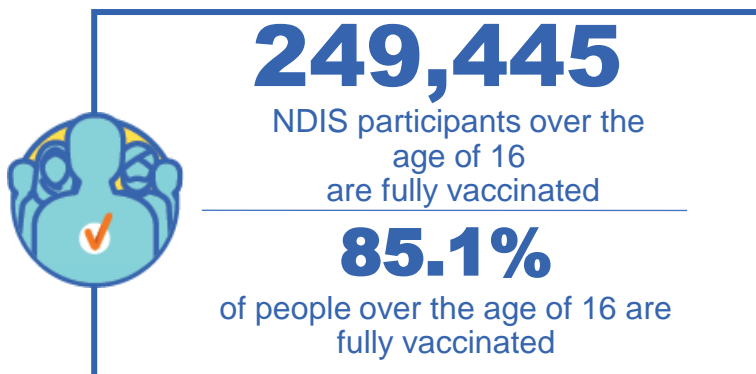
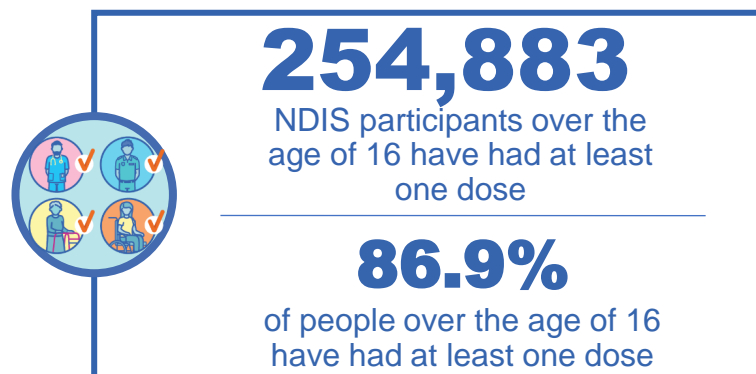
**State level breakdown indicates the residential location and may not align to the state in which the vaccination occurred.

Numbers are calculated as difference in daily cumulative reported numbers to allow for historical corrections in all data sources. This can occasionally result in negative numbers, such as for VIC, SA and NT, where historical details about doses have been updated

National Disability Insurance Scheme (NDIS) reported vaccinations

Data as at:
24 March 2022
Updated weekly

Australia's COVID-19
Vaccine Roadmap



NDIS participant vaccinations

	People aged 16+ with at least one dose	People aged 16+ fully vaccinated	% People aged 16+ with at least one dose	% People aged 16+ fully vaccinated
ACT	4,830	4,761	89.1%	87.8%
NSW	78,482	77,152	87.5%	86.0%
NT	2,204	2,119	77.3%	74.3%
QLD	50,153	49,017	85.3%	83.3%
SA	20,759	20,168	84.6%	82.2%
TAS	6,396	6,215	87.0%	84.5%
VIC	67,848	66,576	88.1%	86.5%
WA	24,211	23,437	87.9%	85.1%
National	254,883	249,445	86.9%	85.1%

Source: Linkage between National Disability Insurance Agency data and the Australian Immunisation Register. Total NDIS participant numbers as at 28th February. Australian Immunisation Register data as at 23 March. Includes all participants regardless of residence type.

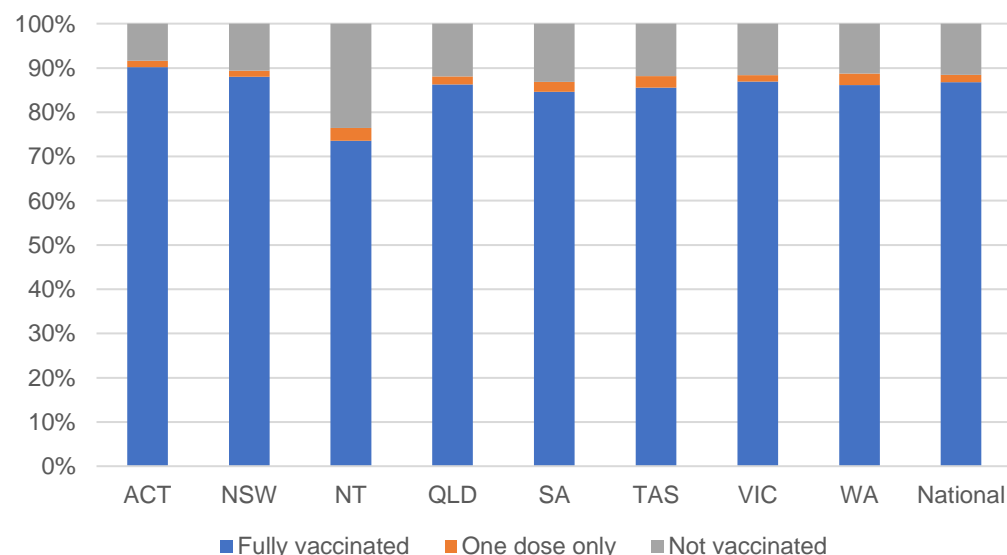
National Disability Insurance Scheme (NDIS) reported vaccinations

Data as at:
24 March 2022
Updated Weekly

Australia's COVID-19
Vaccine Roadmap

NATIONAL	Total people with at least one dose	People fully vaccinated	Total number of individuals in cohort	% People with at least one dose	% People fully vaccinated
NDIS participants living in disability accommodation	20,659	20,275	23,352	88.5%	86.8%

NDIS participants in disability and aged care accommodation



Source: Linkage between National Disability Insurance Agency data and the Australian Immunisation Register. Includes participants residing in disability accommodation only.

Source: Total NDIS participant numbers as at 28th February. Participant data as at 23 March. Australian Immunisation Register data as at 23 March. Worker data as at 24 March.

NDIS workforce vaccinations

	NDIS workers with at least one dose	NDIS workers fully vaccinated	% NDIS workers with at least one dose	% NDIS workers fully vaccinated
NSW	120,488	116,832	98.1%	95.1%
VIC	116,141	110,028	98.2%	93.1%
QLD	69,327	68,478	97.4%	96.3%
WA	32,724	30,401	98.5%	91.5%
SA	35,143	31,646	98.2%	88.4%
TAS	10,783	10,500	99.7%	97.1%
ACT	3,547	3,516	99.6%	98.8%
NT	3,403	3,253	97.6%	93.3%
TOTAL	391,556	374,654	98.1%	93.9%

Source: the NDIS Commission has established a requirement for registered NDIS providers who provide intensive disability support services to report on the vaccination status of workers they employ, or otherwise engage, to deliver NDIS-funded supports and services, and who are required to be vaccinated in accordance with in-force state and territory public health orders. The statistics reflect data reported to the NDIS Commission by registered NDIS providers and should be considered indicative and subject to change

Note: Some registered NDIS providers are yet to report on the vaccination status of their workforce. The NDIS Commission is working with those providers around reporting requirements.

Remaining workers not included include those exempt from vaccination requirements, workers whose vaccination status is not yet verified by the provider (such as workers on leave) and provider reporting anomalies.

Residential aged care vaccination rollout

Australia's COVID-19
Vaccine Roadmap

Data as at:
24 Mar 2022
Updated weekly

Residential aged care facilities status

100%

Commonwealth facilities
visited (2,537 planned sites)

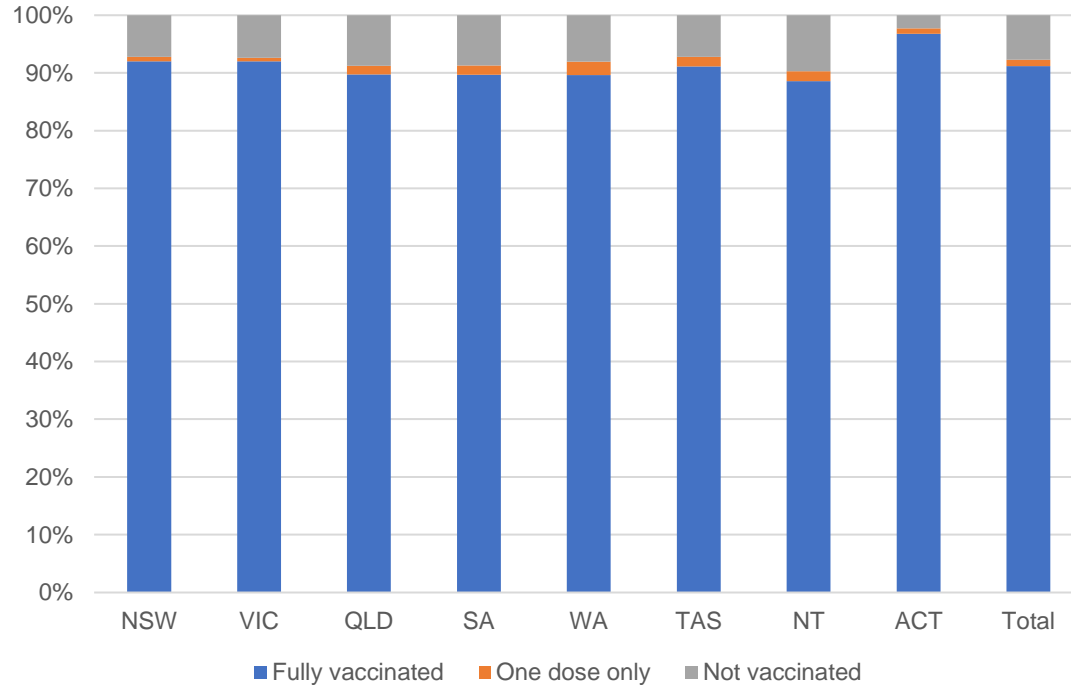
174,536

People fully vaccinated

176,706

People with at least
one dose

Aged care resident vaccinations



Aged care worker vaccinations

Jurisdictions	Total workers with at least one dose	Workers fully vaccinated	% Workers with at least one dose	% Workers fully vaccinated
NSW	78,130	78,121	98.7%	98.7%
VIC	66,398	66,397	96.9%	96.9%
QLD	48,462	48,455	98.7%	98.7%
SA	26,362	26,342	97.7%	97.6%
WA	23,583	23,580	98.1%	98.1%
TAS	7,676	7,676	100.0%	100.0%
NT	844	844	100.0%	100.0%
ACT	3,038	3,038	99.9%	99.9%
Total	254,493	254,453	98.1%	98.1%

Source: My Aged Care Portal vaccination progress

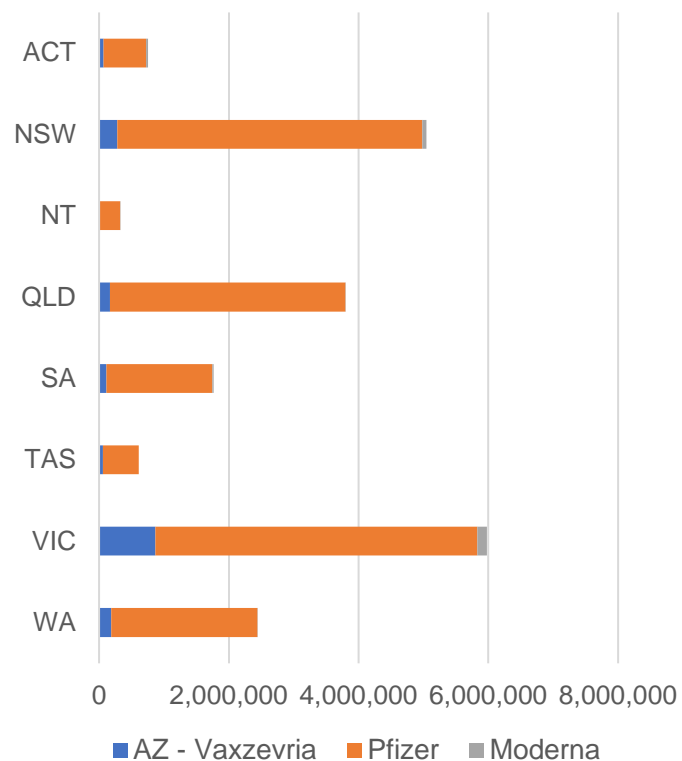
*Status updates are provided by facilities at least once per week. Reporting is updated Monday to Friday to encompass different facility updates being made on different days.

Data is sourced directly from Aged Care Service Providers and is not drawn or closely aligned with data from AIR due to inconsistencies and potential lags in uploading of records.

Data as at:
30 Mar 2022

Jurisdiction administered

Total vaccine doses administered in State and Territory clinics as at 30 March



20,723,718 total vaccine doses administered
in State and Territory clinics as at 30 March
+ **13,677** recorded in the last 24 hours
+ **125,413** recorded in the last 7 days

NSW
5,048,311
(+2,207 daily
increase)

VIC
5,982,793
(+3,249 daily
increase)

QLD
3,798,816
(+2,105 daily
increase)

WA
2,441,061
(+2,041 daily
increase)

TAS
610,724
(+669 daily
increase)

SA
1,766,367
(+1,412 daily
increase)

ACT
751,613
(+1,494 daily
increase)

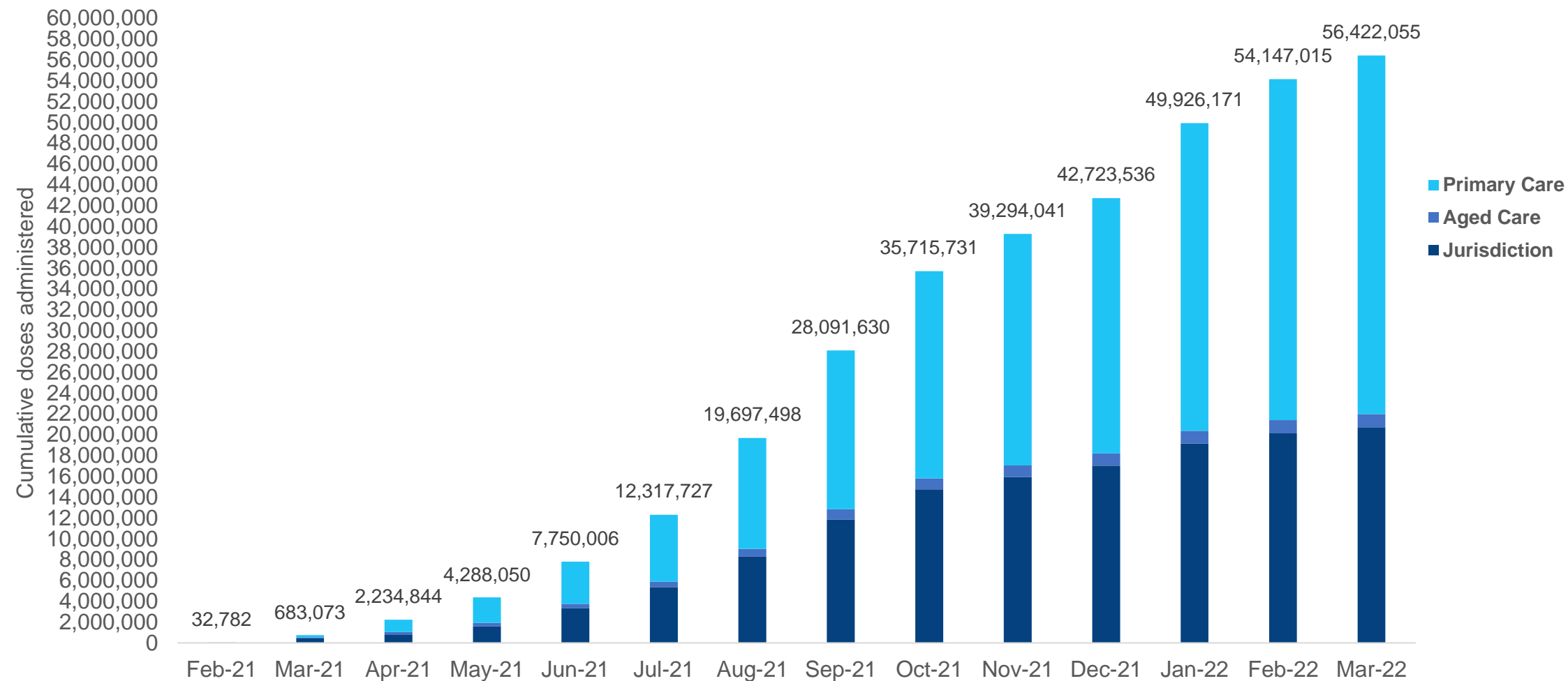
NT
324,033
(+500 daily
increase)

*Sourced from the Australian Immunisation Register. Numbers are calculated as difference in daily cumulative reported numbers to allow for historical corrections.

Source: Australian Immunisation Register

Cumulative doses administered by channel

Data as at:
30 Mar 2022



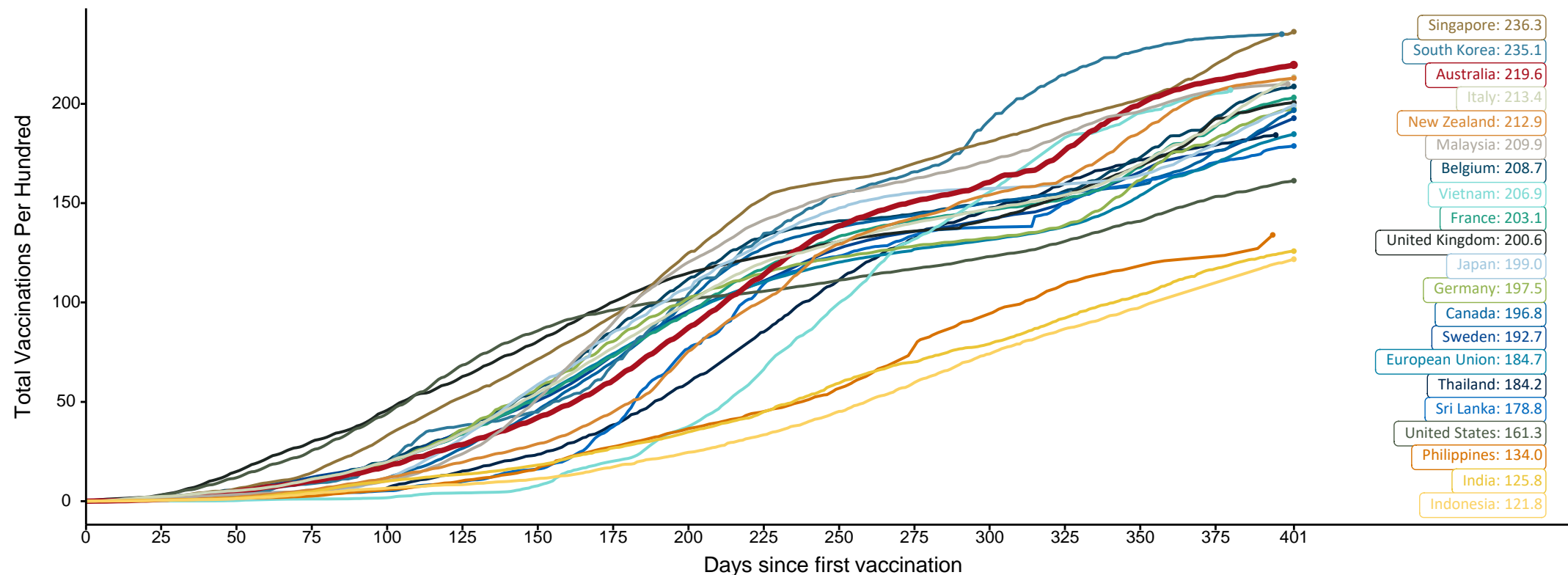
Source: Australian Immunisation Register

Doses at equivalent stages of rollout (Day 401)

Data as at:
30 Mar 2022

The x-axis is truncated at the length of Australia's vaccination program. Countries with intermittent reporting have had their doses per 100 imputed to Australia's current stage of rollout. Israel excluded as it is beyond scale of the graph

Cumulative doses administered (30 Mar): **56,422,055**



Note: From 11 January 2022, data for Australia includes all doses administered to people 5 and over. Prior to 11 January, data was for 12 and over.

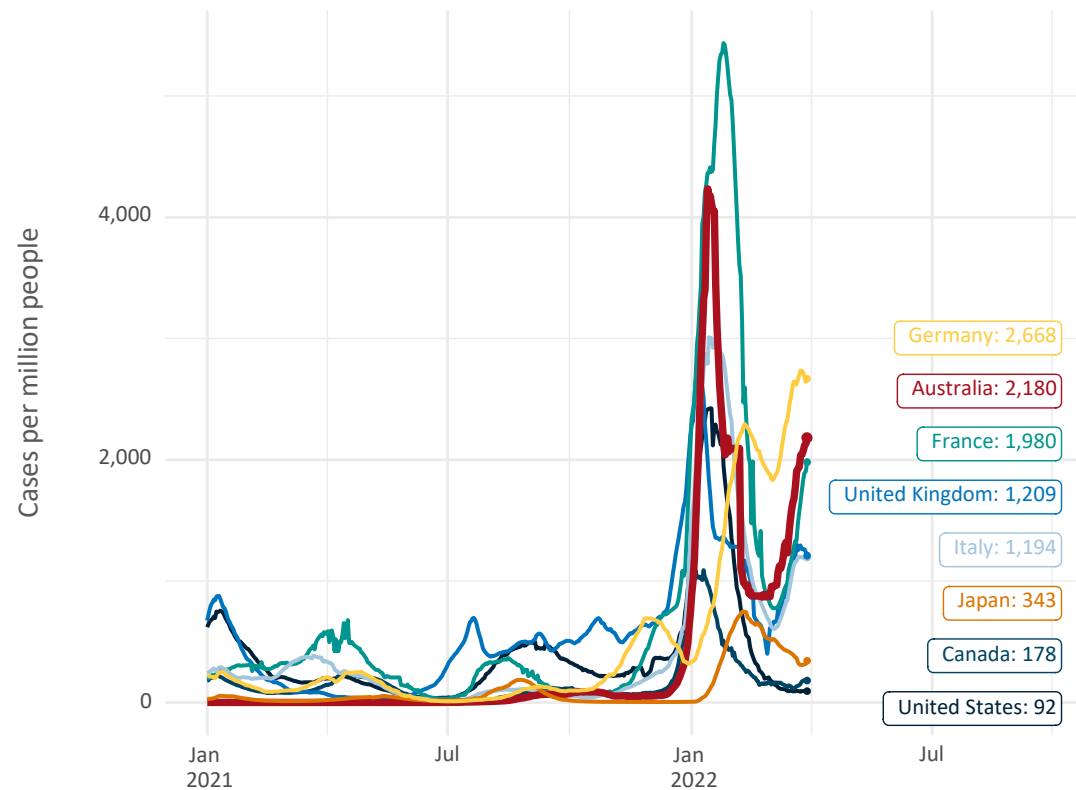
Source: Department of Health (Australia), Our World in Data (international)

Latest data: 30 March

Data as at:
30 Mar 2022

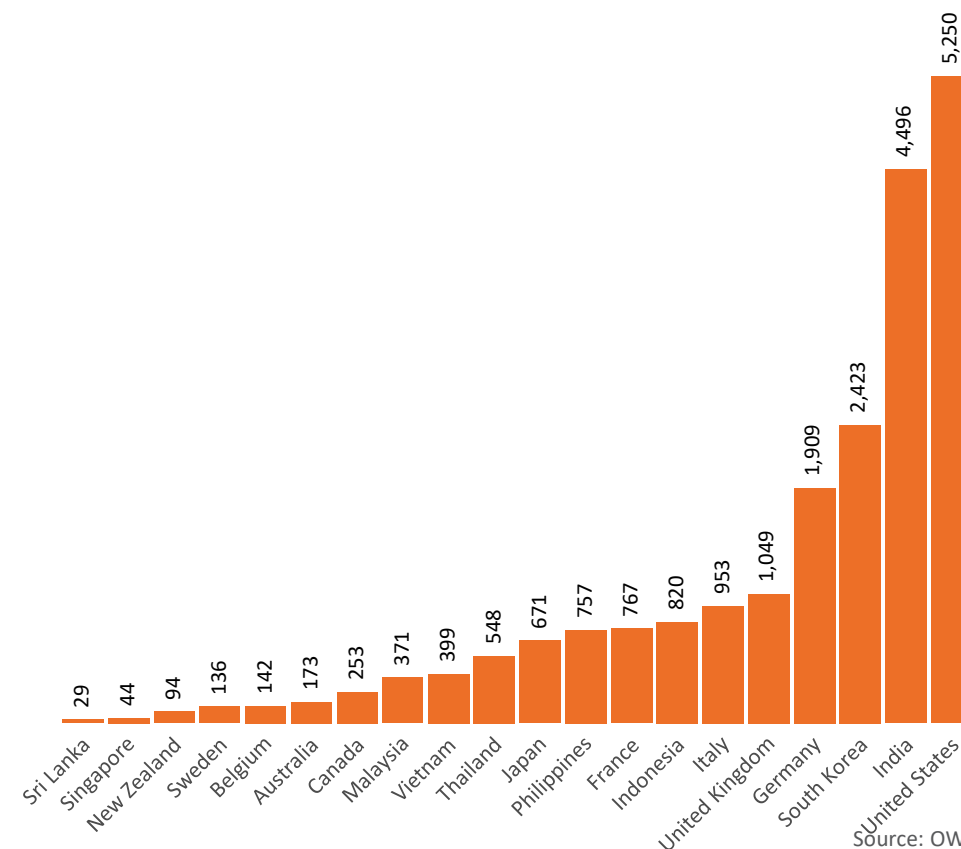
International data – COVID-19

New daily cases per million in 2021, Australia and G7 countries
Smoothed - 7 day average



Source: OWID
Data downloaded: 31 Mar 2022 07:26
Latest data: 29 Mar 2022

COVID-19 deaths in past 7 days - Australia and select countries



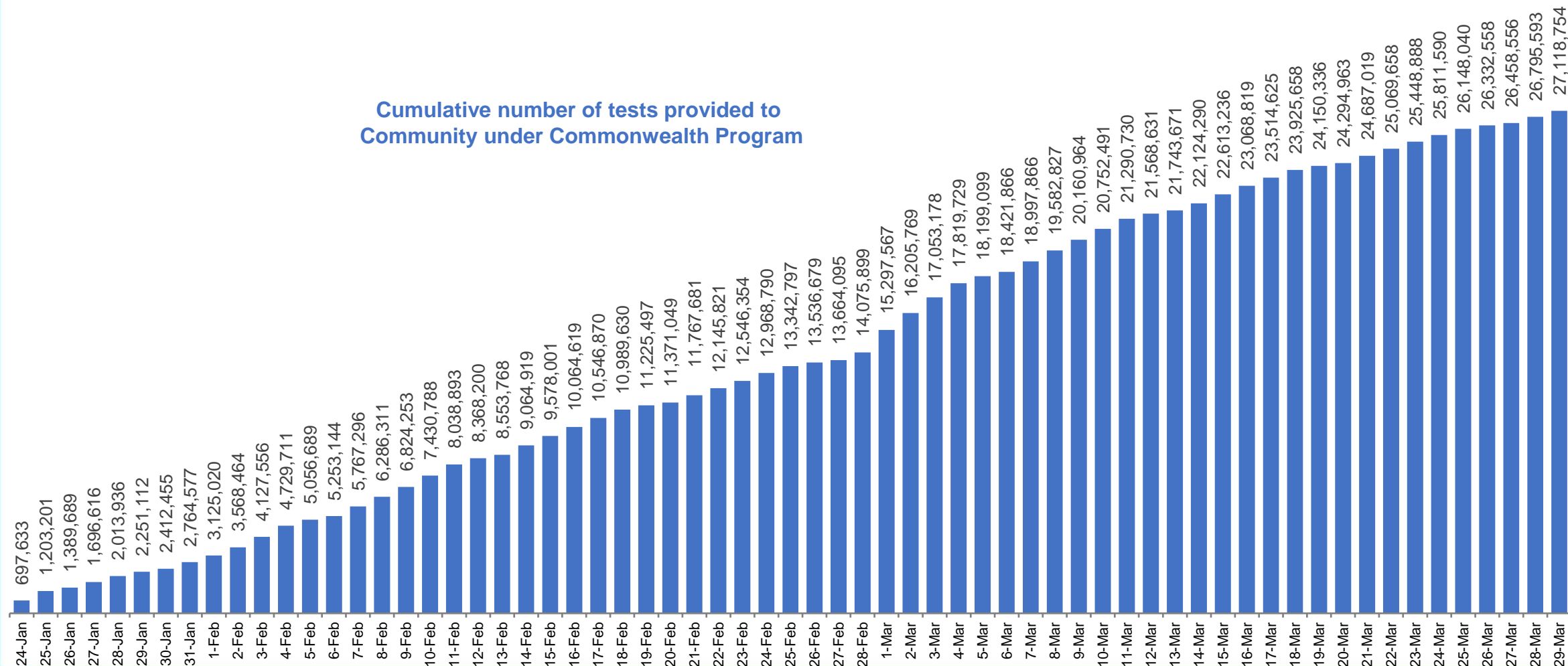
Source: OWID
Data downloaded: 31 Mar 2022 07:26
Latest data: 29 Mar 2022

Data as at:
30 Mar 2022

Concessional rapid antigen test program

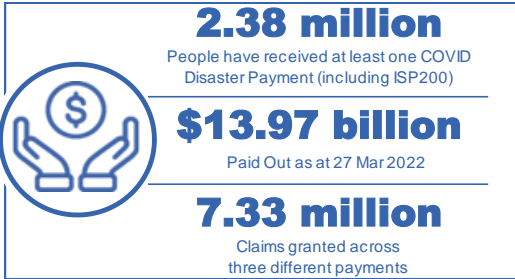
5,619 pharmacies have delivered over 27.1 million rapid antigen tests to more than 4.2m eligible concession card holders under the Government's concessional rapid antigen test program.

Cumulative number of tests provided to
Community under Commonwealth Program



Pandemic Response Payments

Data as at midnight: 27 Mar 2022
Updated weekly



COVID Disaster Payment:	5.89 million claims received - 2.19 million individuals paid a total of \$12.59 billion.
\$200 Income Support Payment:	353,000 claims received - 183,000 individuals paid a total of \$268.9 million.
Pandemic Leave Disaster Payment:	1.59 million claims received - 980,000 individuals paid a total of \$1.11 billion.

COVID-19 DISASTER PAYMENTS

THREE PAYMENTS AVAILABLE

COVID Disaster Payment

assisting during a lockdown event in a Commonwealth hotspot.

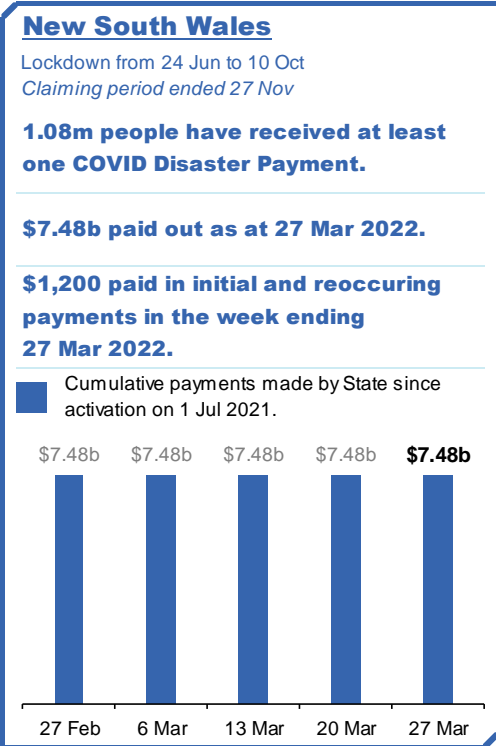
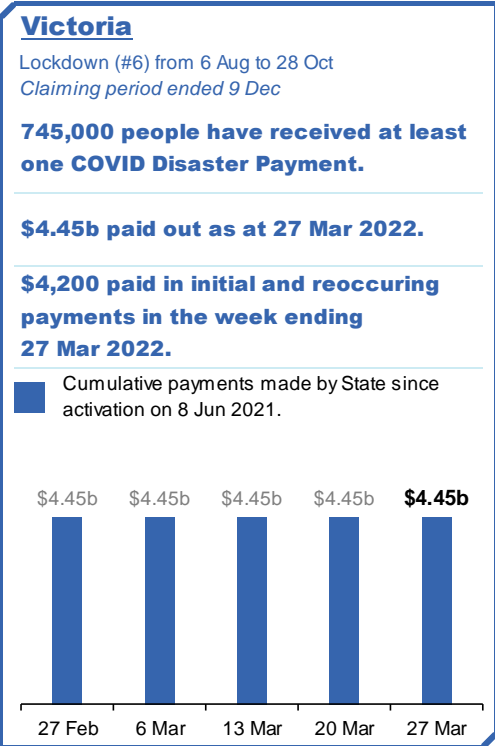
Income Support Payment \$200

for income support recipients who lost at least 8 hours of work.

Pandemic Leave Disaster Payment

for those who have to self-isolate, quarantine or care.

For more information visit: servicesaustralia.gov.au



Pandemic Response Payments (continued)

Data as at midnight: 27 Mar 2022
Updated weekly

COVID-19 DISASTER PAYMENTS

Tasmania

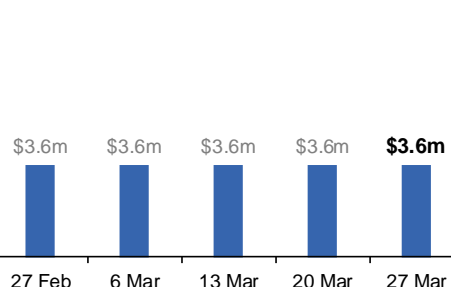
Lockdown from 15 Oct to 18 Oct
Claiming period ended 12 Nov

6,900 people have received at least one COVID Disaster Payment.

\$3.6m paid out as at 27 Mar 2022.

Nil paid in initial and reoccurring payments in the week ending 27 Mar 2022.

Cumulative payments made by State since activation on 22 Oct 2021.



Queensland

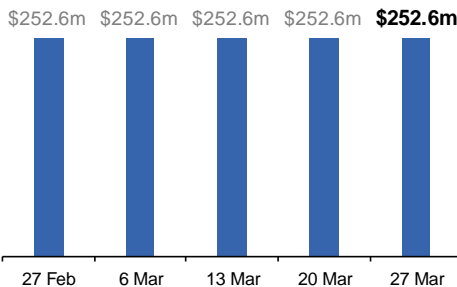
Lockdown from 31 Jul to 11 Aug
Claiming period ended 28 Aug

196,000 people have received at least one COVID Disaster Payment.

\$252.6m paid out as at 27 Mar 2022.

Nil paid in initial and reoccurring payments in the week ending 27 Mar 2022.

Cumulative payments made by State since activation on 7 Aug 2021.



South Australia

Lockdown from 21 to 27 Jul
Claiming period ended 17 Aug

86,000 people have received at least one COVID Disaster Payment.

\$48.2m paid out as at 27 Mar 2022.

Nil paid in initial and reoccurring payments in the week ending 27 Mar 2022.

Cumulative payments made by State since activation on 28 Jul 2021.

