




**Australian Government**  
**Operation COVID Shield**

# COVID-19 Vaccine Roll-out

30 March 2022

Data as at:  
29 Mar 2022


# Total vaccine doses



**19,956,946**  
people have had at least one dose

---

**>95%**  
of people over the age of 16 have had at least one dose



**19,610,710**  
people are fully vaccinated

---

**>95%**  
of people over the age of 16 are fully vaccinated



**12,840,115**  
people over the age of 16 who have received more than two doses



**56,359,439** total vaccine doses administered nationally as at 29 March

**+65,855** recorded in the last 24 hours

**NSW**  
**17,508,486**  
(+18,106 daily increase)

**VIC**  
**14,864,933**  
(+16,155 daily increase)

**QLD**  
**10,675,454**  
(+12,427 daily increase)

**WA**  
**6,157,095**  
(+9,238 daily increase)

**TAS**  
**1,266,212**  
(+1,806 daily increase)

**SA**  
**3,881,039**  
(+4,581 daily increase)

**ACT**  
**1,455,289**  
(+2,674 daily increase)

**NT**  
**550,931**  
(+868 daily increase)

\*Administration state breakdown indicates state in which a vaccine was administered

\*\*Overall dose count includes instances of more than three doses per person in a small number of cases.

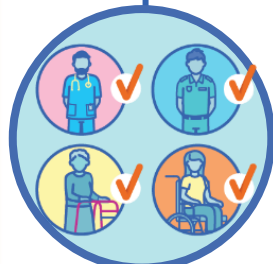
Source: Australian Immunisation Register

# Booster Vaccinations

Data as at:  
29 Mar 2022



**188,881**  
Indigenous people who have received more than two doses  
**51.4%**  
of eligible population (367,536)



**162,767**  
Aged Care Residents who have received more than two doses##  
**93.2%**  
of eligible population (174,656)



**173,086** NDIS participants | **20,525** NDIS residents  
who have received more than two doses#  
**72.3%** of eligible population (239,000) | **87.0%** of eligible population (23,000)



**12,840,115** total people who have received more than two doses nationally

**+38,269** recorded in the last 24 hours

**67.7%** of people who are eligible (18,961,290) have received more than two doses

NSW	People	% of Eligible
Cumulative	3,930,912	63.8%
Daily increase	10,923	

VIC	People	% of Eligible
Cumulative	3,476,406	69.3%
Daily increase	9,079	

QLD	People	% of Eligible
Cumulative	2,218,753	61.9%
Daily increase	7,416	

WA	People	% of Eligible
Cumulative	1,547,765	86.2%
Daily increase	5,156	

SA	People	% of Eligible
Cumulative	908,914	71.3%
Daily increase	2,554	

TAS	People	% of Eligible
Cumulative	291,068	70.7%
Daily increase	1,212	

ACT	People	% of Eligible
Cumulative	257,910	75.1%
Daily increase	600	

NT	People	% of Eligible
Cumulative	109,268	68.0%
Daily increase	555	

**99,119**

doses administered to persons residing in other territories or with missing residential information

\*People may belong to multiple groups and could be represented in the above breakdowns multiple times.  
# NDIS participants data as at 28 March 2022. ## Aged Care Residents data as at 29 March 2022.

Source: Australian Immunisation Register

Data as at:  
29 Mar 2022

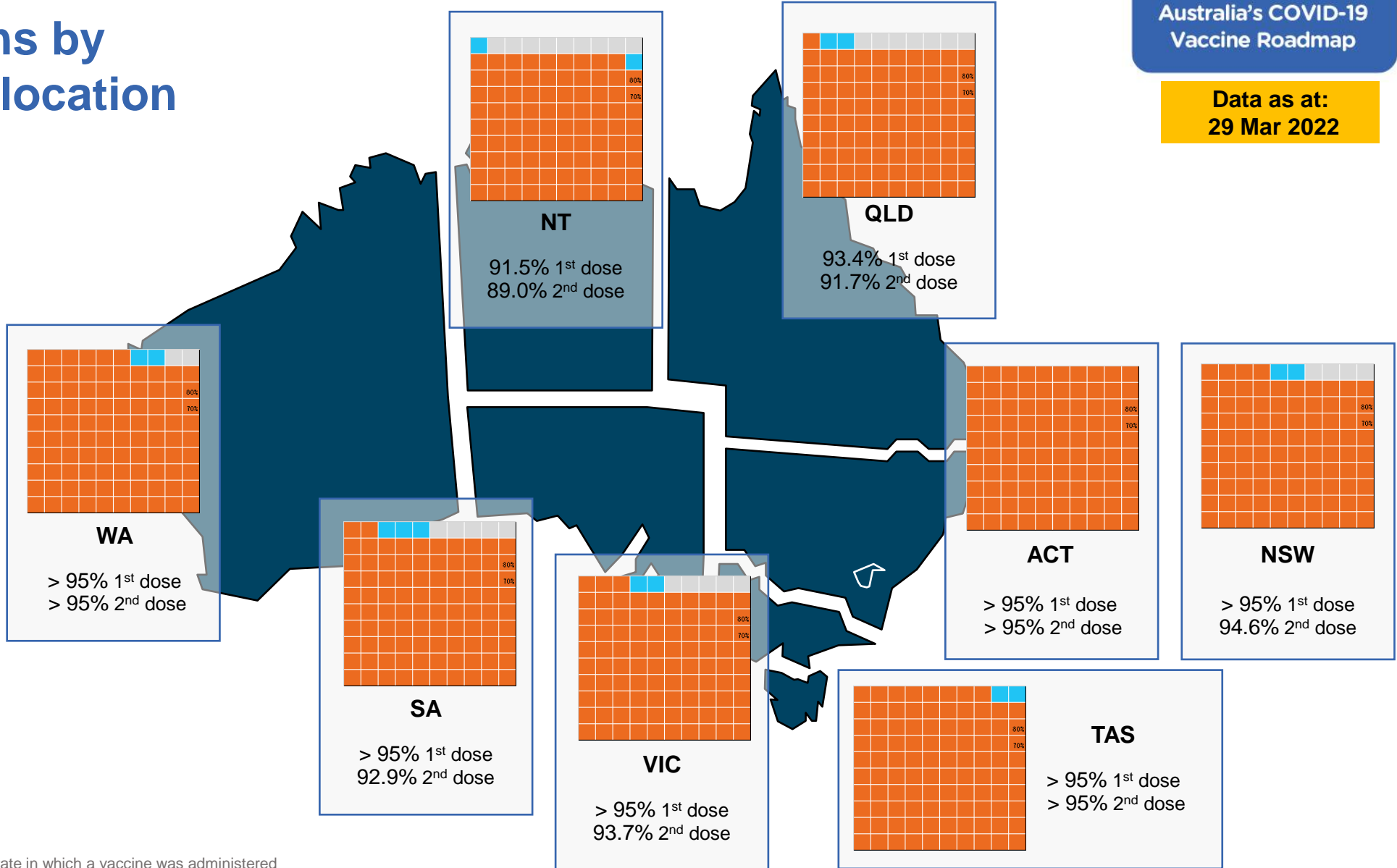
# Vaccinations by residential location

## First doses

Age	Today	4 weeks ago	8 weeks ago
16+	>95%	>95%	>95%
50+	>95%	>95%	>95%
70+	>95%	>95%	>95%

## Fully vaccinated

Age	Today	4 weeks ago	8 weeks ago
16+	>95%	94.7%	93.9%
50+	>95%	>95%	>95%
70+	>95%	>95%	>95%



\*Residential state may differ from the state in which a vaccine was administered

# Commonwealth and Jurisdiction vaccine doses administered

Data as at:  
29 Mar 2022



**56,359,439** total vaccine doses administered nationally as at 29 March

**+ 65,855** recorded in the last 24 hours

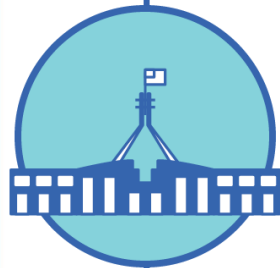


**20,710,041**

doses administered by state and territory facilities

**+ 12,455**

recorded in the last 24 hours



**35,649,398**

doses administered by commonwealth facilities

**+ 53,400**

recorded in the last 24 hours

**34,383,756** total vaccine doses administered in primary care settings

**1,265,642** total vaccine doses administered in aged care and disability settings

NSW	Jurisdictions	Commonwealth
Cumulative	5,046,104	12,462,382
Daily increase	876	17,230

VIC	Jurisdictions	Commonwealth
Cumulative	5,979,544	8,885,389
Daily increase	3,369	12,786

QLD	Jurisdictions	Commonwealth
Cumulative	3,796,711	6,878,743
Daily increase	2,055	10,372

WA	Jurisdictions	Commonwealth
Cumulative	2,439,020	3,718,075
Daily increase	2,242	6,996

TAS	Jurisdictions	Commonwealth
Cumulative	610,055	656,157
Daily increase	429	1,377

SA	Jurisdictions	Commonwealth
Cumulative	1,764,955	2,116,084
Daily increase	1,208	3,373

ACT	Jurisdictions	Commonwealth
Cumulative	750,119	705,170
Daily increase	1,742	932

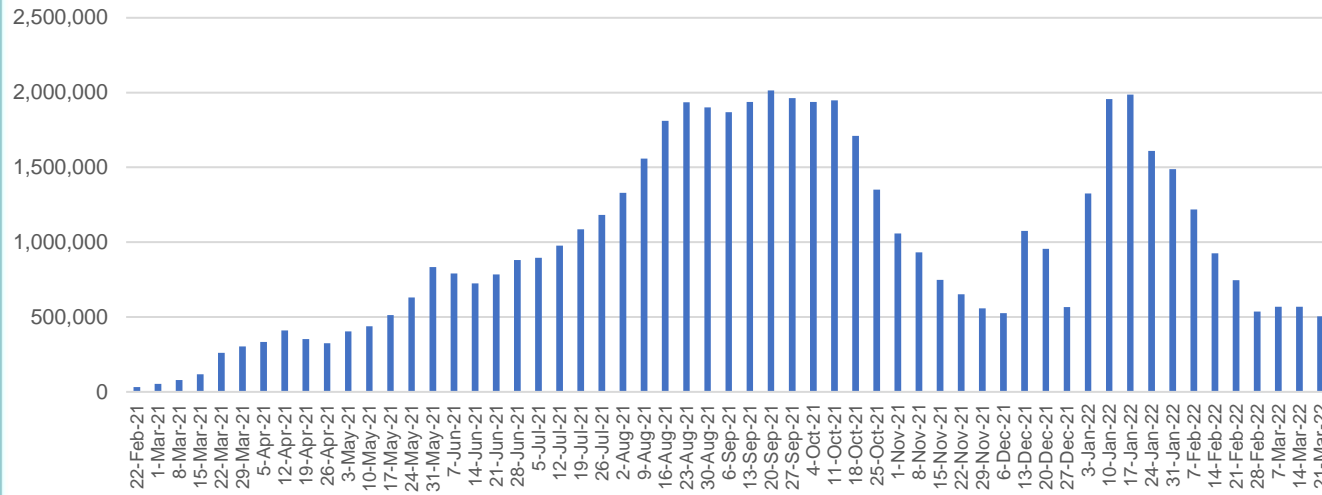
NT	Jurisdictions	Commonwealth
Cumulative	323,533	227,398
Daily increase	534	334

# Vaccine milestone charts

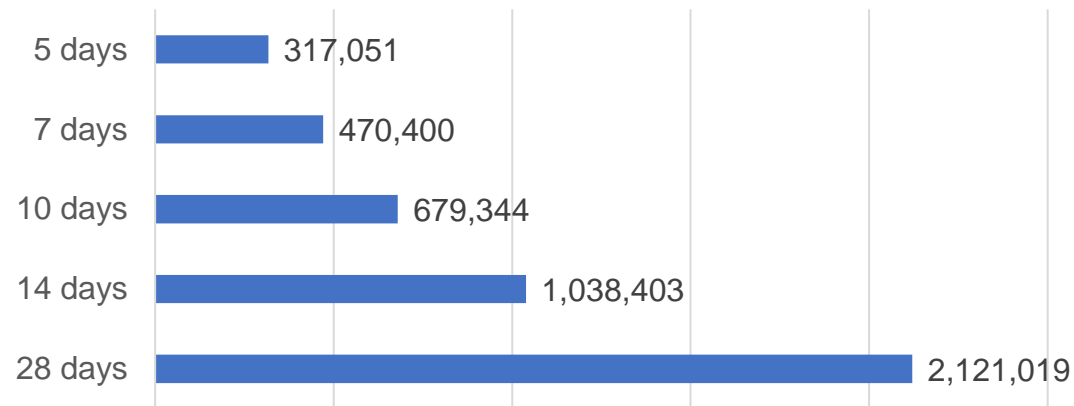
Data as at:  
29 Mar 2022

Australia's COVID-19  
Vaccine Roadmap

Doses Administered by Week

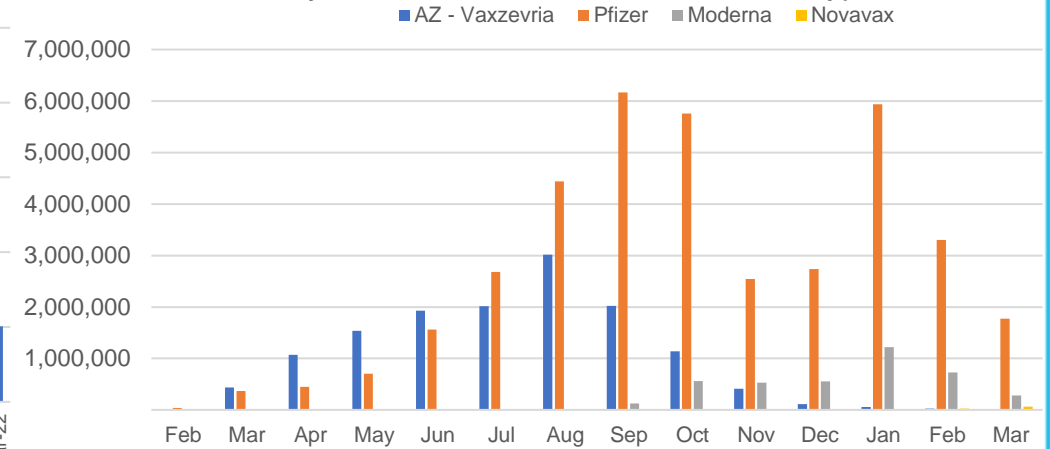


Doses Reported

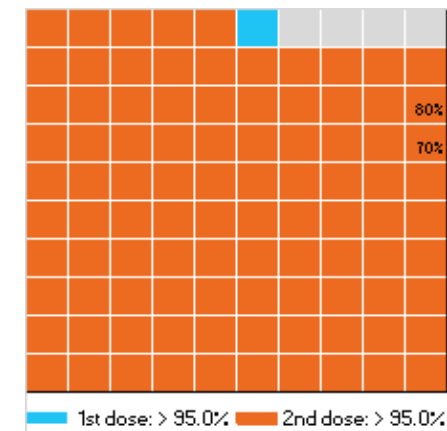


\*Sourced from the Australian Immunisation Register.

Doses by administration month and vaccine type



Eligible population percentage coverage



\*Each square represents 1% of the national population. Squares are filled as milestones are achieved.

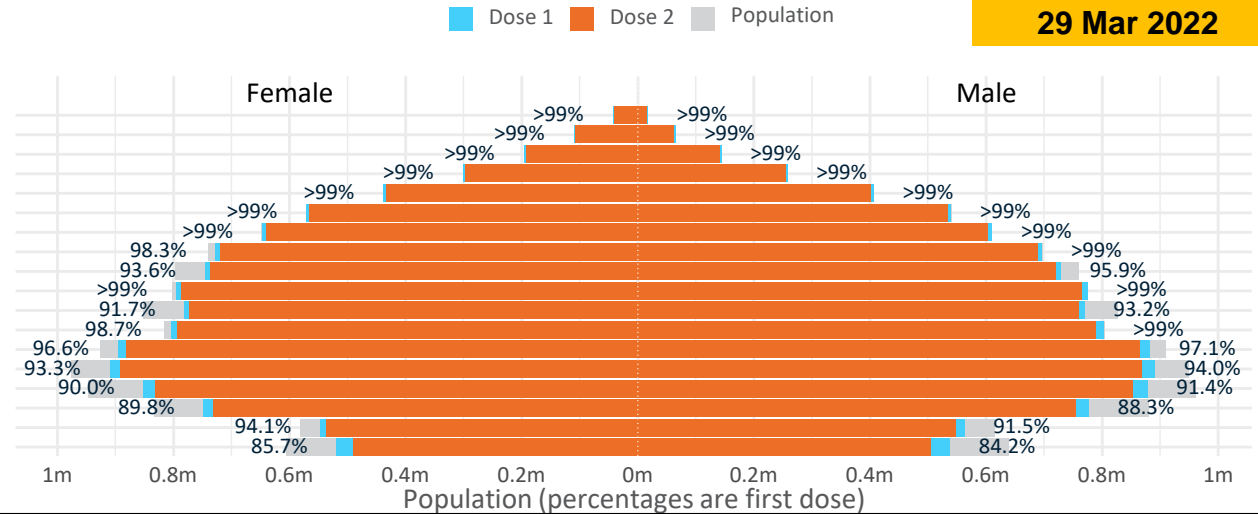
# Doses by age and sex

First and second doses by age and sex

	16+	50+	12-15	5-11
Dose 1	96.78% (19,956,946 doses / 20,619,959 people)	>99% (8,822,116 doses / 8,749,703 people)	84.93% (1,056,541 doses / 1,243,990 people)	52.22% (1,188,879 doses / 2,276,638 people)
Dose 2	95.11% (19,610,710 doses / 20,619,959 people)	>99% (8,711,592 doses / 8,749,703 people)	80.00% (995,228 doses / 1,243,990 people)	26.11% (594,494 doses / 2,276,638 people)

Data as at:  
29 Mar 2022

Age	Dose 1	Dose 2
95+	60,271 (>99%)	56,872 (>99%)
90-94	174,808 (>99%)	169,005 (>99%)
85-89	340,424 (>99%)	333,178 (>99%)
80-84	559,403 (>99%)	551,776 (>99%)
75-79	845,163 (>99%)	836,475 (>99%)
70-74	1,111,765 (>99%)	1,100,528 (>99%)
65-69	1,258,953 (>99%)	1,244,370 (98.9%)
60-64	1,425,446 (>99%)	1,408,738 (98.1%)
55-59	1,475,081 (94.8%)	1,457,863 (93.7%)
50-54	1,570,802 (>99%)	1,552,787 (>99%)
45-49	1,551,854 (92.6%)	1,531,935 (91.4%)
40-44	1,610,422 (>99%)	1,584,882 (97.8%)
35-39	1,782,395 (97.1%)	1,748,947 (95.3%)
30-34	1,809,078 (94.0%)	1,766,052 (91.8%)
25-29	1,739,590 (91.2%)	1,691,299 (88.7%)
20-24	1,531,290 (89.4%)	1,491,264 (87.1%)
16-19	1,110,201 (92.8%)	1,084,739 (90.7%)
12-15	1,056,541 (84.9%)	995,228 (80.0%)



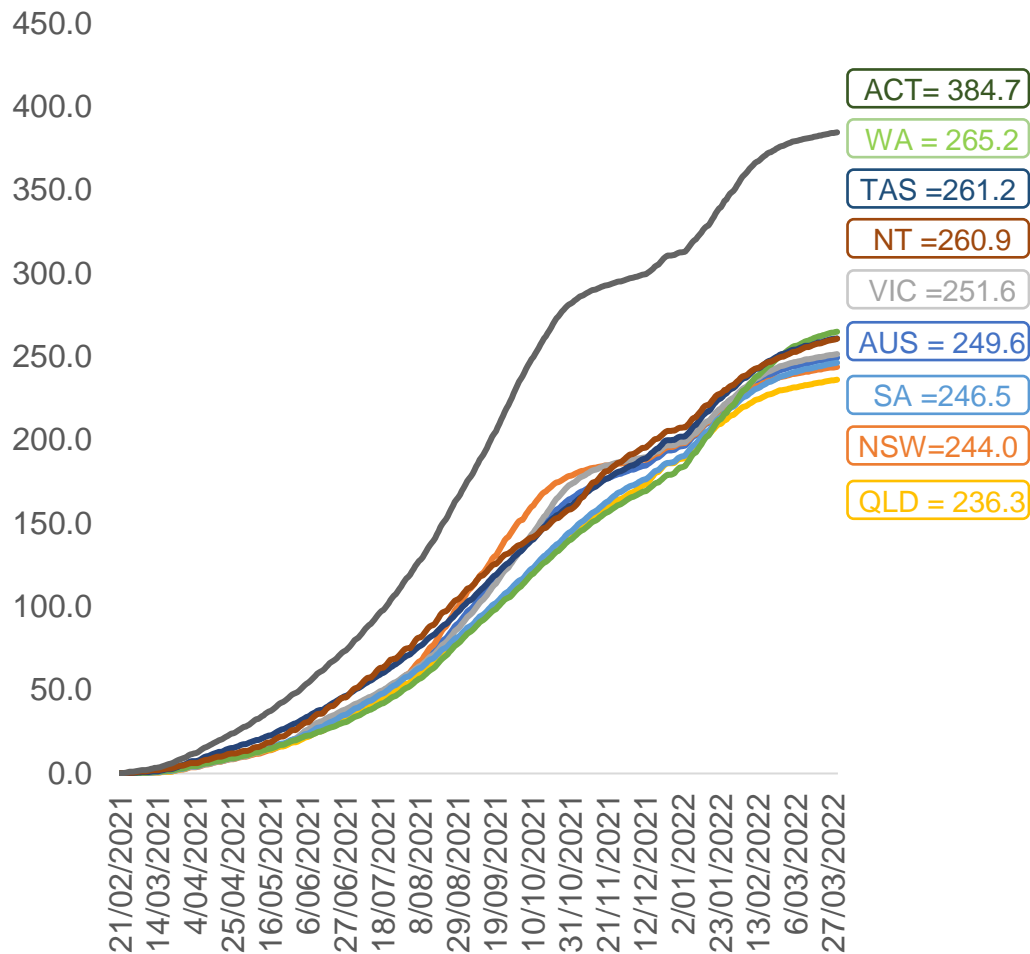
	AUS	ACT	NSW	NT	QLD	SA	TAS	VIC	WA
16 and over - dose 1	19,956,946	351,568	6,304,735	174,392	3,842,837	1,370,206	443,446	5,144,207	2,084,581
16 and over - dose 2	19,610,710	346,159	6,209,788	169,561	3,772,907	1,338,815	433,883	5,068,006	2,047,180
16 and over - population	20,619,959*	344,037	6,565,651	190,571	4,112,707	1,440,400	440,172	5,407,574	2,114,978
16 and over % with dose 1	96.78%	>99%	96.03%	91.51%	93.44%	95.13%	>99%	95.13%	98.56%
16 and over % with dose 2	95.11%	>99%	94.58%	88.98%	91.74%	92.95%	98.57%	93.72%	96.79%
5 to 11 - dose 1	1,188,879	31,760	353,894	13,101	207,886	83,863	28,620	324,087	138,293
5 to 11 - dose 2	594,494	20,662	184,167	5,604	104,056	42,767	18,120	159,283	57,189
5 to 11 - population	2,276,638	39,789	716,460	24,750	478,731	148,816	45,033	578,499	244,154
5 to 11 % with dose 1	52.22%	79.82%	49.39%	52.93%	43.42%	56.35%	63.55%	56.02%	56.64%
5 to 11 % with dose 2	26.11%	51.93%	25.71%	22.64%	21.74%	28.74%	40.24%	27.53%	23.42%
12 to 15 - dose 1	1,056,541	20,085	325,722	10,921	207,541	68,492	22,936	276,152	115,534
12 to 15 - dose 2	995,228	19,410	310,162	9,763	193,473	64,518	21,711	263,029	105,213
12 to 15 - population	1,243,990	19,693	390,330	13,060	270,146	82,747	26,308	308,611	132,869
12 to 15 % with dose 1	84.93%	>99%	83.45%	83.62%	76.83%	82.77%	87.18%	89.48%	86.95%
12 to 15 % with dose 2	80.00%	98.56%	79.46%	74.75%	71.62%	77.97%	82.53%	85.23%	79.19%

\*National population will not equal sum of listed jurisdictions due to a small number of people counted in national population residing in some 'other' territories. Sum of state doses will not add to national total as some records are unable to be geocoded to a State or Territory.  
Doses sourced from Australian Immunisation Register, population from ABS ERP June 2020

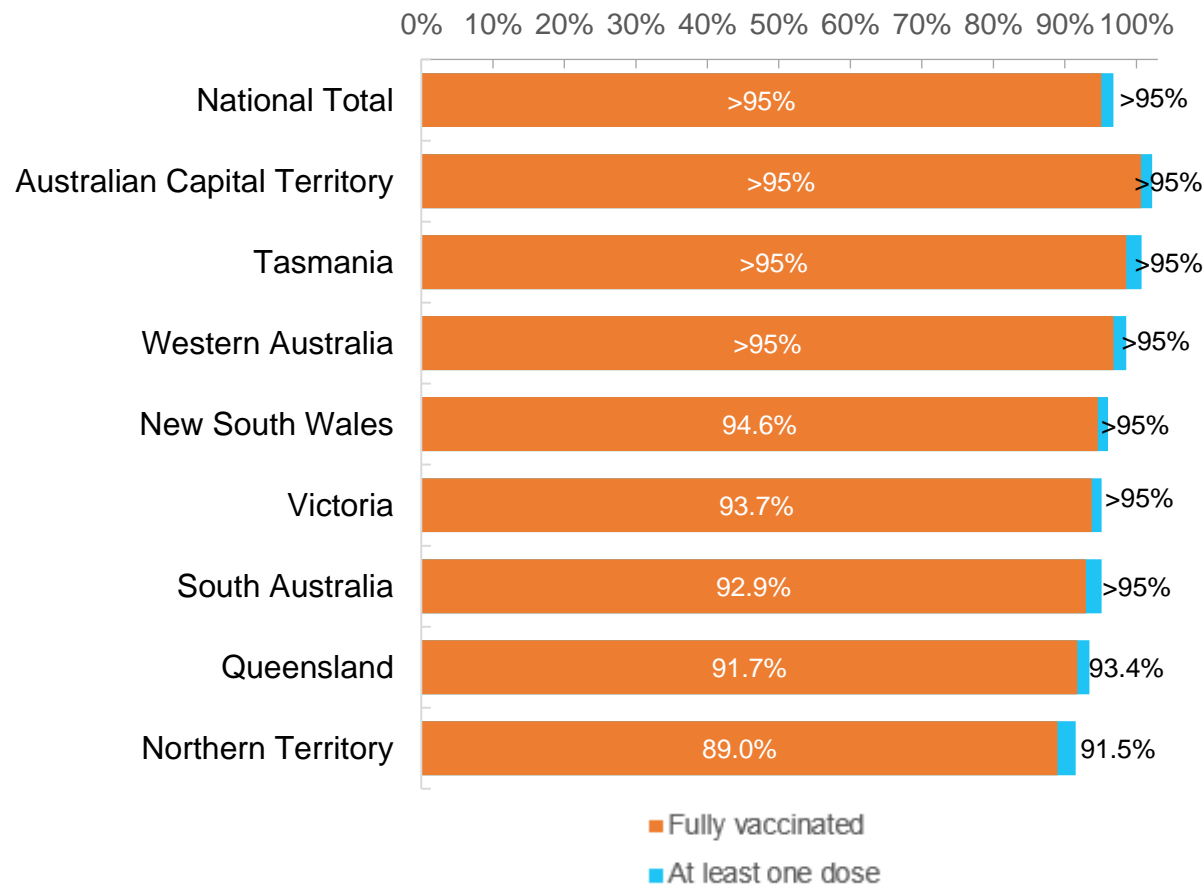
Data as at:  
29 Mar 2022

# Vaccinations by location

Cumulative total doses administered vs eligible state populations\*



First and Second Doses by residential location



\*Not an indication of percentage vaccinated, numbers will exceed 100 due to multiple doses required per person of the population. All doses are included for those aged 12 and above, and are based on vaccination provider location.



# Aboriginal and Torres Strait Islander peoples

## Number of people vaccinated

Data as at:  
29 Mar 2022  
Updated weekly

Australia's COVID-19  
Vaccine Roadmap



**436,084**

people over the age of 16  
have had at least one dose

**84.2%**

of people over the age of 16  
have had at least one dose



**414,780**

people over the age of 16  
are fully vaccinated

**80.0%**

of people over the age of 16 are  
fully vaccinated



People aged 12 – 15 years

**48,579**

**42,396**

**68.4%**

**59.7%**

At least one dose

Fully vaccinated

### 178 Aboriginal community controlled health services (ACCHS)

0#	50	27	44	12	3	21	21
<b>ACT</b>	<b>NSW</b>	<b>NT</b>	<b>QLD</b>	<b>SA</b>	<b>TAS</b>	<b>VIC</b>	<b>WA</b>

Medicare Address State <sup>##</sup>	Individuals Dose 1	Individuals Dose 1 %	Individuals Dose 2	Individuals Dose 2 %
Australian Capital Territory	4,832	90.9%	4,709	88.6%
New South Wales	134,469	86.6%	131,243	84.6%
Northern Territory	42,185	89.3%	39,809	84.3%
Queensland	115,088	81.2%	109,024	76.9%
South Australia	19,764	79.6%	18,238	73.4%
Tasmania	13,863	88.4%	13,424	85.6%
Victoria	35,253	89.7%	34,396	87.5%
Western Australia	53,370	85.3%	48,462	77.5%
Unknown/Other Territories	17,260	65.7%	15,475	58.9%
<b>Totals</b>	<b>436,084</b>	<b>84.2%</b>	<b>414,780</b>	<b>80.0%</b>

Source: Australian Immunisation Register

\*Identifying as Aboriginal and Torres Strait Islander is optional and the estimated population may be under reported.

\*\*Includes all Aboriginal and Torres Strait Islander peoples who have received a vaccination, not limited to those administered in an ACCHS setting

#ACCHS in the ACT are currently operating as a Commonwealth Vaccine Clinics so not included to avoid double counting

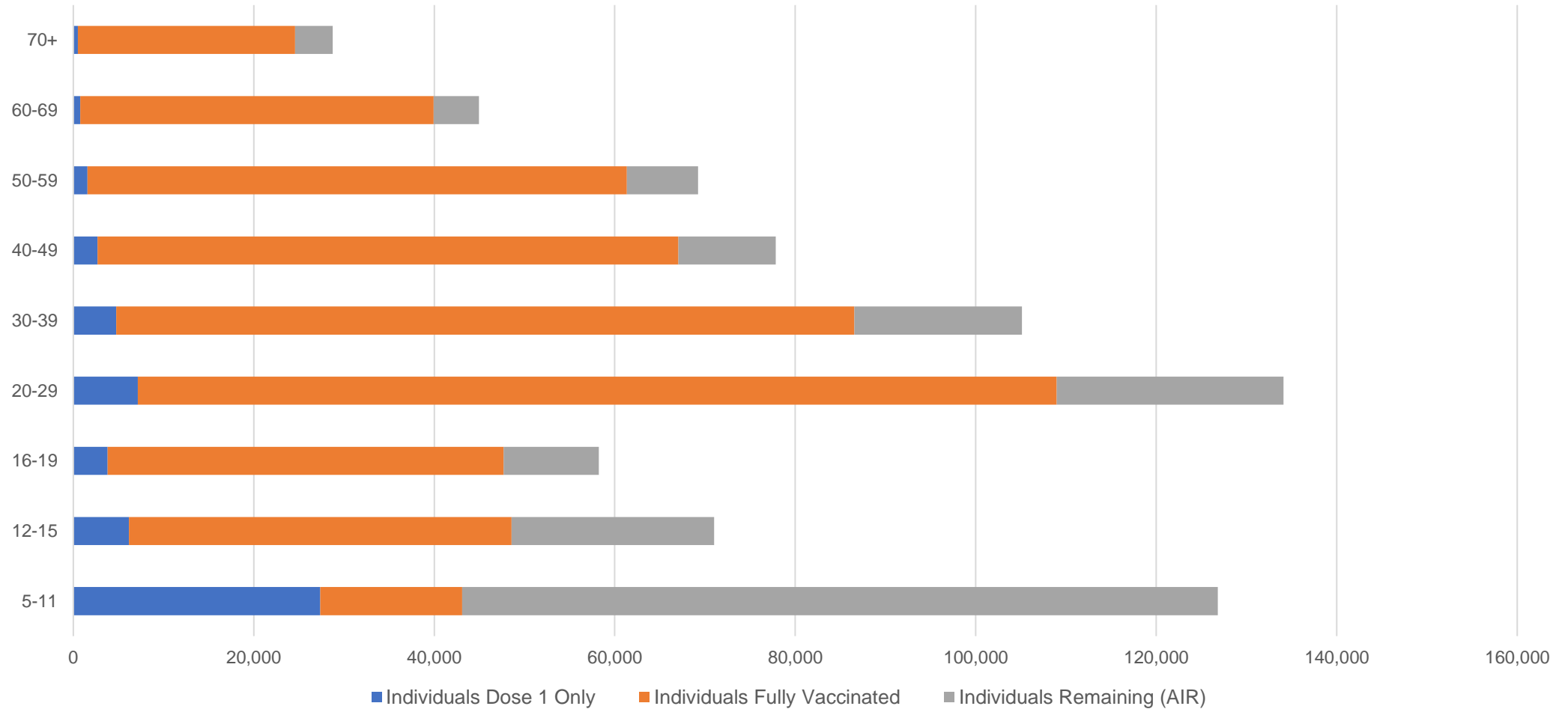
##The above table includes all identified Aboriginal and Torres Strait Islander people who are aged 16 and above by their state of residence.

# Aboriginal and Torres Strait Islander peoples

## Number of people vaccinated by age

Data as at:  
29 Mar 2022  
Updated weekly

Australia's COVID-19  
Vaccine Roadmap



Source: Australian Immunisation Register

# Commonwealth primary care

Data as at:  
29 Mar 2022

Australia's COVID-19  
Vaccine Roadmap



## Primary care vaccine administration sites

<b>5,793</b>	<b>128</b>	<b>178</b>	<b>3,587</b>
GPs	CVCs	ACCHS	Pharmacies



**34,383,756** total vaccine doses administered  
primary care settings as at 29 March  
**+ 52,975** recorded in the last 24 hours

## Primary care vaccinations by provider type

	Doses administered	Daily increase	7 day increase
<b>General Practice*</b> includes other Commonwealth	27,821,757	33,858	218,868
<b>Pharmacy</b>	6,561,999	19,117	118,850

**NSW**  
**11,914,233**  
(+16,890 daily increase)

**VIC**  
**8,578,292**  
(+12,638 daily increase)

**QLD**  
**6,606,220**  
(+9,512 daily increase)

**WA**  
**3,589,916**  
(+6,422 daily increase)

**TAS**  
**636,641**  
(+1,350 daily increase)

**SA**  
**2,039,501**  
(+3,206 daily increase)

**ACT**  
**540,781**  
(+872 daily increase)

**NT**  
**206,086**  
(+305 daily increase)

**272,086**

doses administered to persons residing in other territories or with missing residential information

\*General practice includes Commonwealth Vaccination Clinics, Aboriginal Community Health Centres, Royal Flying Doctor Service and other Commonwealth vaccination facilities

Source: Australian Immunisation Register

Data as at:  
29 Mar 2022

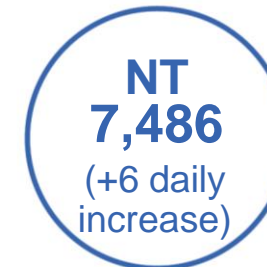
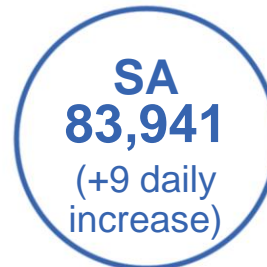
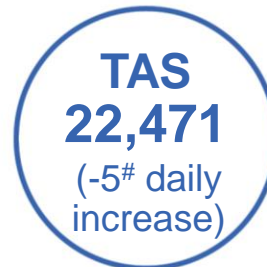
# Commonwealth aged care and disability doses administered



**1,265,642** (+ 425 last 24 hours)

Total vaccine doses administered in aged care and disability facilities as at 29 March

Number of doses administered as part of the Commonwealth aged and disability care rollout



**34,616**

doses administered to persons residing in other territories or with missing residential information

Source: Australian Immunisation Register

\*Sourced from the Australian Immunisation Register. Includes all persons vaccinated at participating residential aged care, disability and related industry settings.

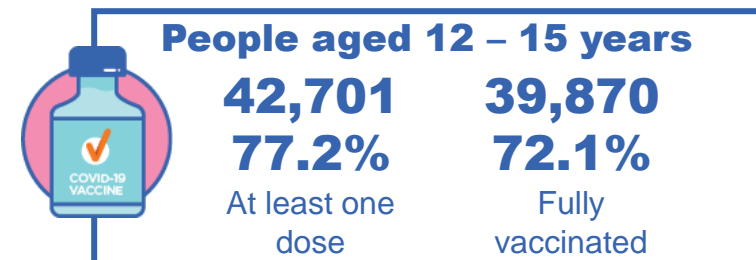
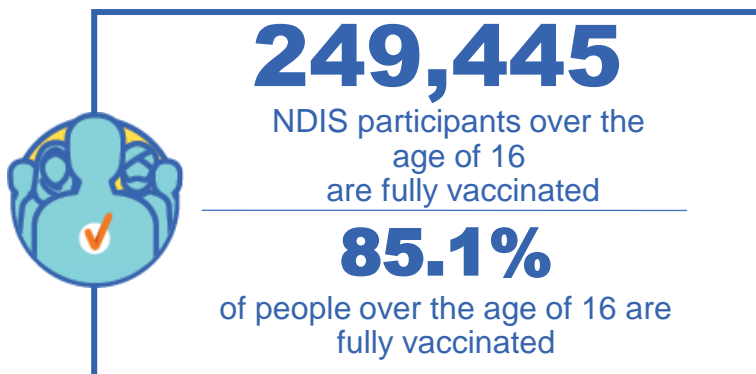
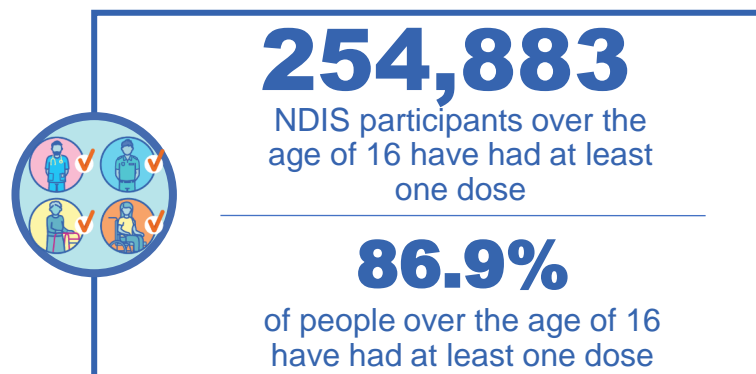
\*\*State level breakdown indicates the residential location and may not align to the state in which the vaccination occurred.

# Numbers are calculated as difference in daily cumulative reported numbers to allow for historical corrections in all data sources. This can occasionally result in negative numbers, such as for VIC and TAS, where historical details about doses have been updated

# National Disability Insurance Scheme (NDIS) reported vaccinations

Data as at:  
24 March 2022  
Updated weekly

Australia's COVID-19  
Vaccine Roadmap



## NDIS participant vaccinations

	People aged 16+ with at least one dose	People aged 16+ fully vaccinated	% People aged 16+ with at least one dose	% People aged 16+ fully vaccinated
ACT	4,830	4,761	<b>89.1%</b>	<b>87.8%</b>
NSW	78,482	77,152	<b>87.5%</b>	<b>86.0%</b>
NT	2,204	2,119	<b>77.3%</b>	<b>74.3%</b>
QLD	50,153	49,017	<b>85.3%</b>	<b>83.3%</b>
SA	20,759	20,168	<b>84.6%</b>	<b>82.2%</b>
TAS	6,396	6,215	<b>87.0%</b>	<b>84.5%</b>
VIC	67,848	66,576	<b>88.1%</b>	<b>86.5%</b>
WA	24,211	23,437	<b>87.9%</b>	<b>85.1%</b>
<b>National</b>	<b>254,883</b>	<b>249,445</b>	<b>86.9%</b>	<b>85.1%</b>

Source: Linkage between National Disability Insurance Agency data and the Australian Immunisation Register. Total NDIS participant numbers as at 28th February. Australian Immunisation Register data as at 23 March. Includes all participants regardless of residence type.

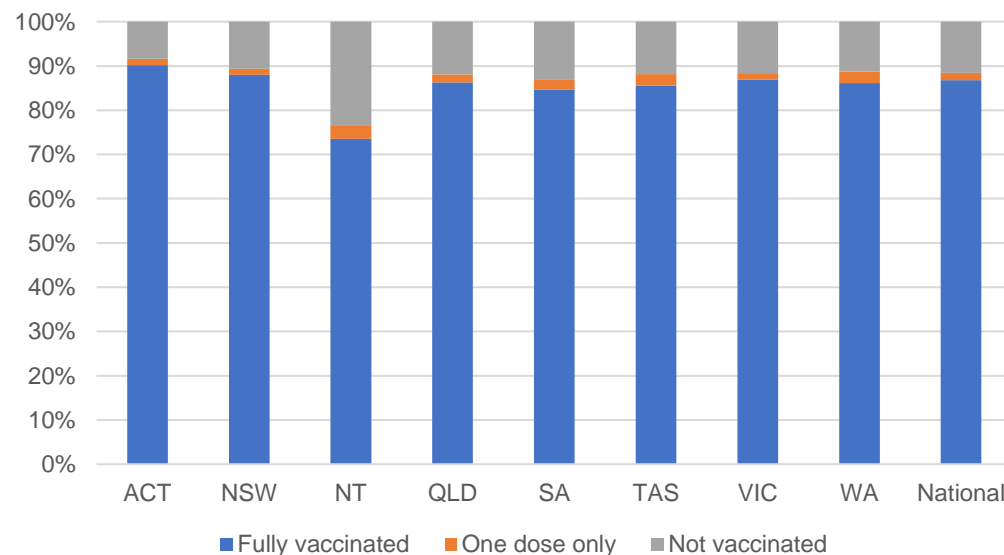
# National Disability Insurance Scheme (NDIS) reported vaccinations

Data as at:  
24 March 2022  
Updated Weekly

Australia's COVID-19  
Vaccine Roadmap

NATIONAL	Total people with at least one dose	People fully vaccinated	Total number of individuals in cohort	% People with at least one dose	% People fully vaccinated
NDIS participants living in disability accommodation	20,659	20,275	23,352	88.5%	86.8%

## NDIS participants in disability and aged care accommodation



Source: Linkage between National Disability Insurance Agency data and the Australian Immunisation Register. Includes participants residing in disability accommodation only.  
Source: Total NDIS participant numbers as at 28th February. Participant data as at 23 March. Australian Immunisation Register data as at 23 March. Worker data as at 24 March.

## NDIS workforce vaccinations

	NDIS workers with at least one dose	NDIS workers fully vaccinated	% NDIS workers with at least one dose	% NDIS workers fully vaccinated
NSW	120,488	116,832	98.1%	95.1%
VIC	116,141	110,028	98.2%	93.1%
QLD	69,327	68,478	97.4%	96.3%
WA	32,724	30,401	98.5%	91.5%
SA	35,143	31,646	98.2%	88.4%
TAS	10,783	10,500	99.7%	97.1%
ACT	3,547	3,516	99.6%	98.8%
NT	3,403	3,253	97.6%	93.3%
<b>TOTAL</b>	<b>391,556</b>	<b>374,654</b>	<b>98.1%</b>	<b>93.9%</b>

Source: the NDIS Commission has established a requirement for registered NDIS providers who provide intensive disability support services to report on the vaccination status of workers they employ, or otherwise engage, to deliver NDIS-funded supports and services, and who are required to be vaccinated in accordance with in-force state and territory public health orders. The statistics reflect data reported to the NDIS Commission by registered NDIS providers and should be considered indicative and subject to change

Note: Some registered NDIS providers are yet to report on the vaccination status of their workforce. The NDIS Commission is working with those providers around reporting requirements.

Remaining workers not included include those exempt from vaccination requirements, workers whose vaccination status is not yet verified by the provider (such as workers on leave) and provider reporting anomalies.

# Residential aged care vaccination rollout

Residential aged care facilities status

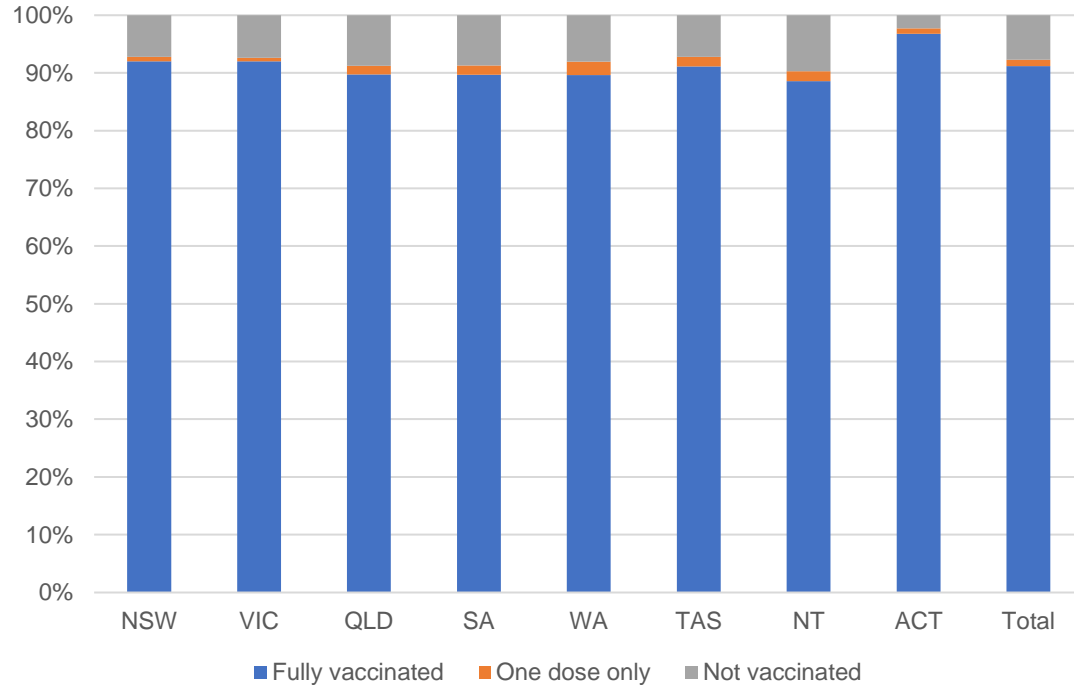
**100%**  
Commonwealth facilities visited (2,537 planned sites)

**174,536**  
People fully vaccinated

**176,706**  
People with at least one dose

Data as at:  
24 Mar 2022  
Updated weekly

## Aged care resident vaccinations



## Aged care worker vaccinations

Jurisdictions	Total workers with at least one dose	Workers fully vaccinated	% Workers with at least one dose	% Workers fully vaccinated
NSW	78,130	78,121	98.7%	98.7%
VIC	66,398	66,397	96.9%	96.9%
QLD	48,462	48,455	98.7%	98.7%
SA	26,362	26,342	97.7%	97.6%
WA	23,583	23,580	98.1%	98.1%
TAS	7,676	7,676	100.0%	100.0%
NT	844	844	100.0%	100.0%
ACT	3,038	3,038	99.9%	99.9%
<b>Total</b>	<b>254,493</b>	<b>254,453</b>	<b>98.1%</b>	<b>98.1%</b>

Source: My Aged Care Portal vaccination progress

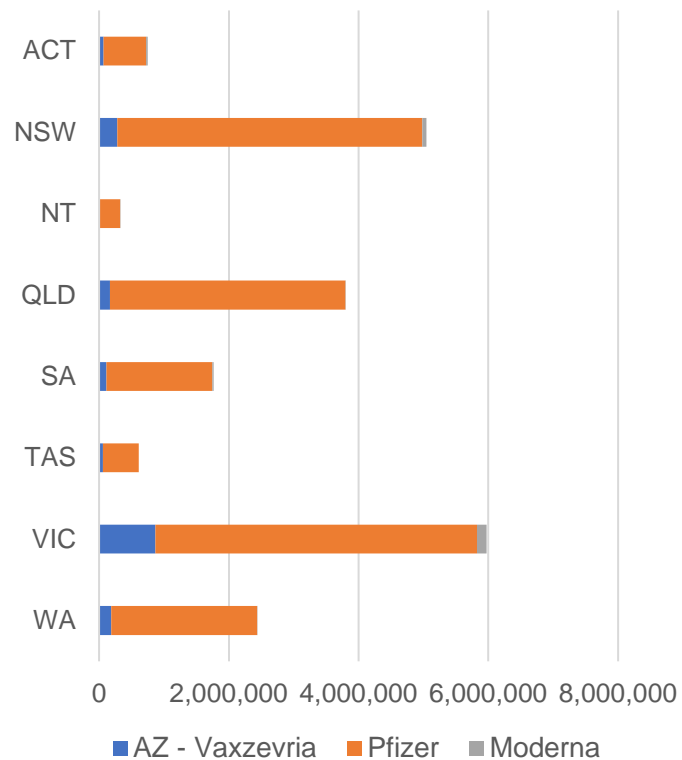
\*Status updates are provided by facilities at least once per week. Reporting is updated Monday to Friday to encompass different facility updates being made on different days.

Data is sourced directly from Aged Care Service Providers and is not drawn or closely aligned with data from AIR due to inconsistencies and potential lags in uploading of records.

Data as at:  
29 Mar 2022

## Jurisdiction administered

Total vaccine doses administered in State and Territory clinics as at 29 March



**20,710,041** total vaccine doses administered in State and Territory clinics as at 29 March  
 + **12,455** recorded in the last 24 hours  
 + **129,496** recorded in the last 7 days

**NSW**  
**5,046,104**  
 (+876 daily increase)

**VIC**  
**5,979,544**  
 (+3,369 daily increase)

**QLD**  
**3,796,711**  
 (+2,055 daily increase)

**WA**  
**2,439,020**  
 (+2,242 daily increase)

**TAS**  
**610,055**  
 (+429 daily increase)

**SA**  
**1,764,955**  
 (+1,208 daily increase)

**ACT**  
**750,119**  
 (+1,742 daily increase)

**NT**  
**323,533**  
 (+534 daily increase)

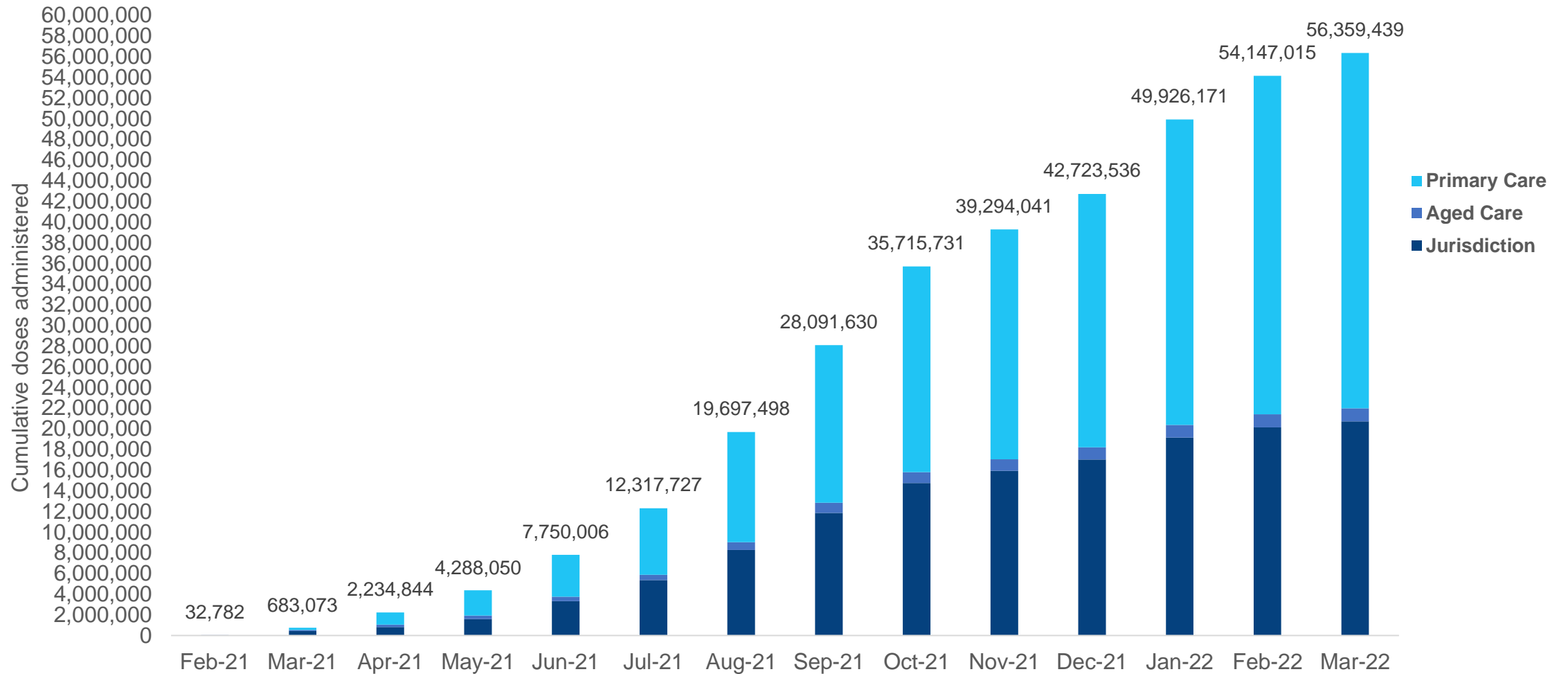
\*Sourced from the Australian Immunisation Register. Numbers are calculated as difference in daily cumulative reported numbers to allow for historical corrections.

Source: Australian Immunisation Register



Data as at:  
29 Mar 2022

# Cumulative doses administered by channel



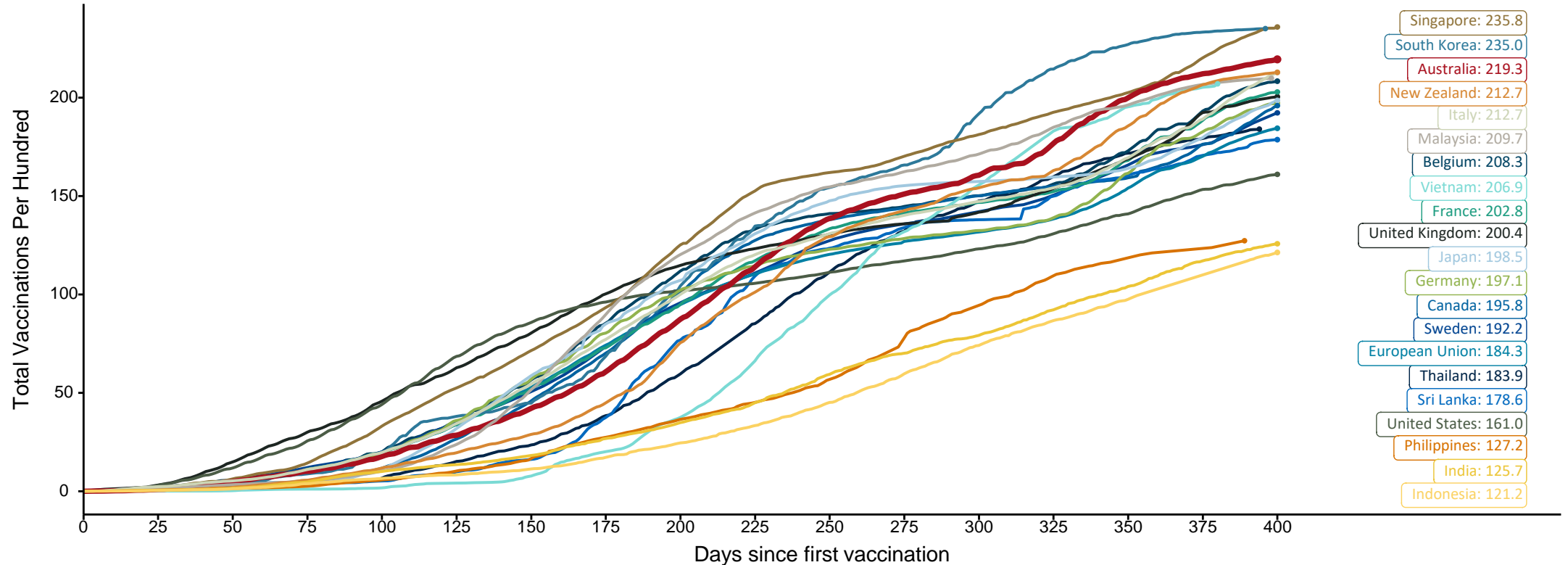
Source: Australian Immunisation Register

# Doses at equivalent stages of rollout (Day 400)

Data as at:  
29 Mar 2022

The x-axis is truncated at the length of Australia's vaccination program. Countries with intermittent reporting have had their doses per 100 imputed to Australia's current stage of rollout. Israel excluded as it is beyond scale of the graph

Cumulative doses administered (29 Mar): **56,359,439**

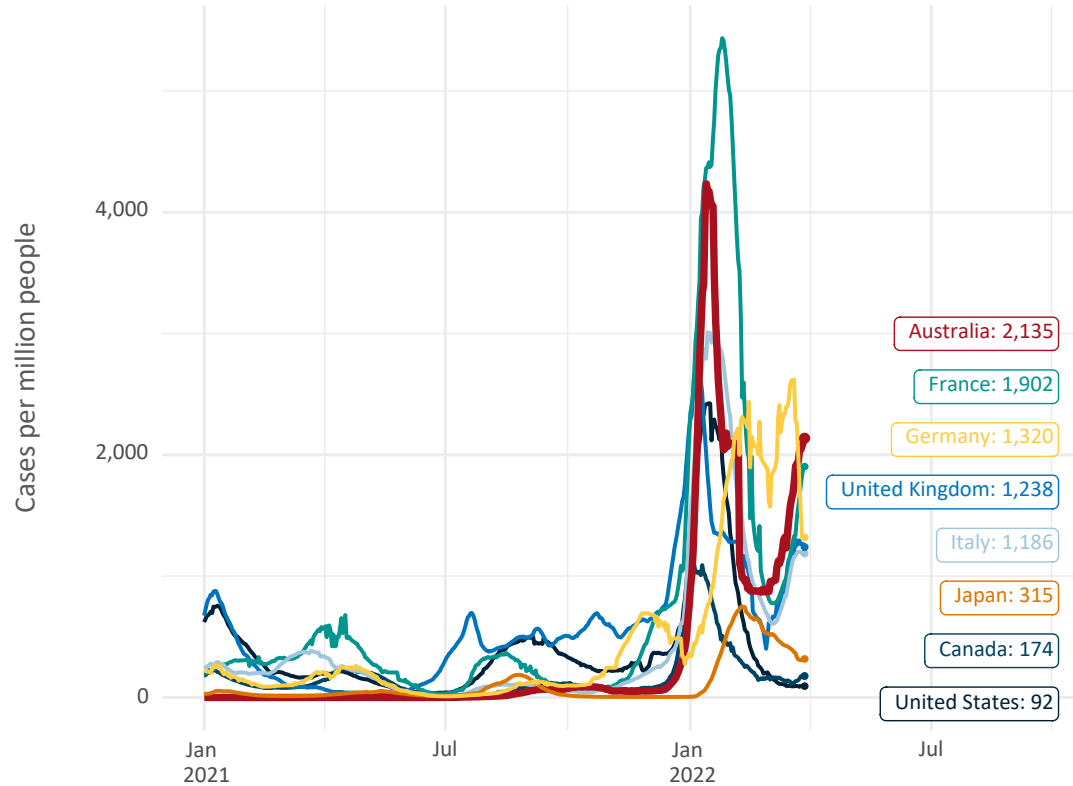


Note: From 11 January 2022, data for Australia includes all doses administered to people 5 and over. Prior to 11 January, data was for 12 and over.  
Source: Department of Health (Australia), Our World in Data (international)  
Latest data: 29 March

Data as at:  
29 Mar 2022

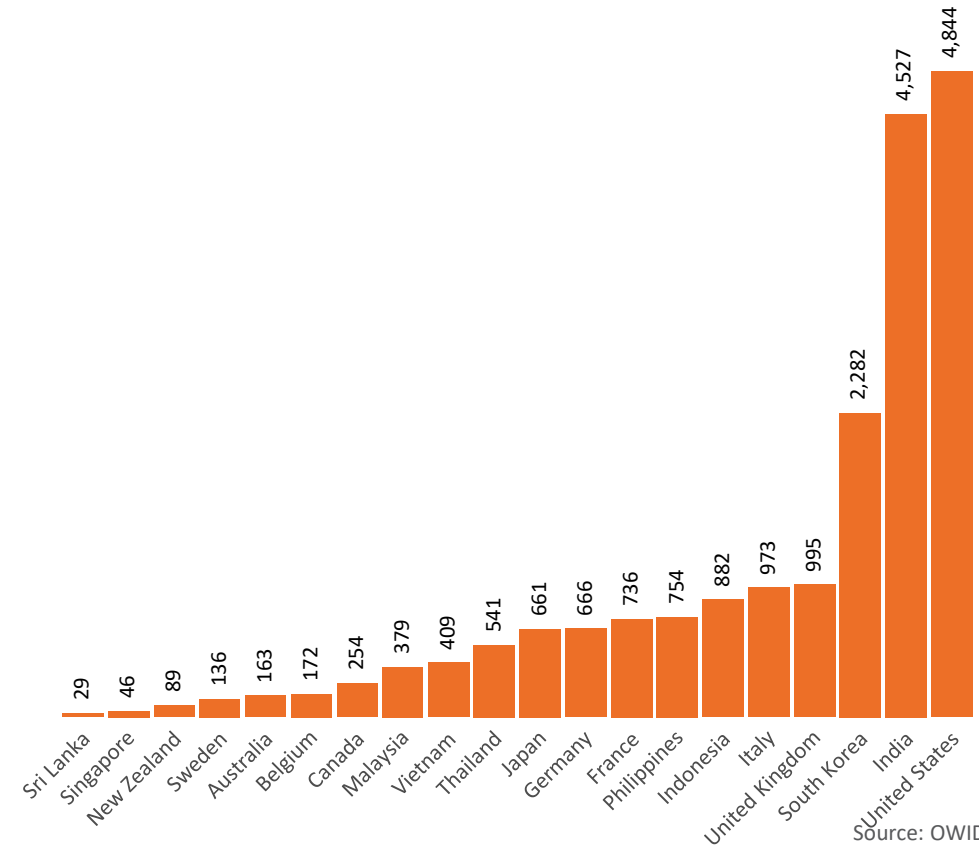
# International data – COVID-19

New daily cases per million in 2021, Australia and G7 countries  
Smoothed - 7 day average



Source: OWID  
Data downloaded: 30 Mar 2022 08:30  
Latest data: 28 Mar 2022

COVID-19 deaths in past 7 days - Australia and select countries



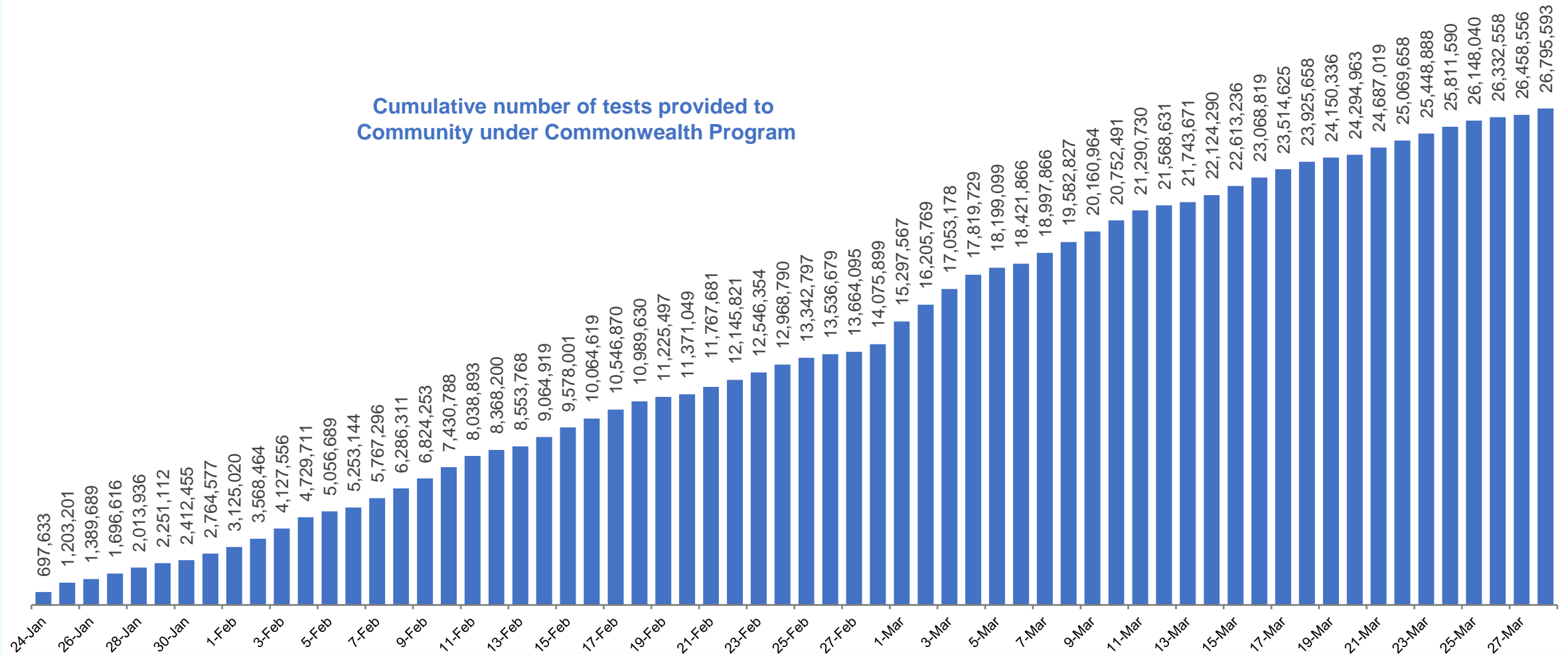
Source: OWID  
Data downloaded: 30 Mar 2022 08:30  
Latest data: 28 Mar 2022

Data as at:  
28 Mar 2022

# Concessional rapid antigen test program


5,619 pharmacies have delivered over 26.7 million rapid antigen tests to more than 4.2m eligible concession card holders under the Government's concessional rapid antigen test program.

Cumulative number of tests provided to  
Community under Commonwealth Program



# Pandemic Response Payments

Data as at midnight: 27 Mar 2022  
Updated weekly



**2.38 million**  
People have received at least one COVID Disaster Payment (including ISP200)

**\$13.97 billion**  
Paid Out as at 27 Mar 2022


**7.33 million**  
Claims granted across three different payments



**93%**  
of Claims Received Digitally



<b>COVID Disaster Payment:</b>	5.89 million claims received - 2.19 million individuals paid a total of \$12.59 billion.
<b>\$200 Income Support Payment:</b>	353,000 claims received - 183,000 individuals paid a total of \$268.9 million.
<b>Pandemic Leave Disaster Payment:</b>	1.59 million claims received - 980,000 individuals paid a total of \$1.11 billion.



**THREE PAYMENTS AVAILABLE**

**COVID Disaster Payment**  
assisting during a lockdown event in a Commonwealth hotspot.

**Income Support Payment \$200**  
for income support recipients who lost at least 8 hours of work.

**Pandemic Leave Disaster Payment**  
for those who have to self-isolate, quarantine or care.

For more information visit:  
[servicesaustralia.gov.au](https://servicesaustralia.gov.au)

## COVID-19 DISASTER PAYMENTS

**Northern Territory**  
Lockdown (#3) from 16 Nov to 22 Nov  
Claiming period ended 27 Dec

**7,500 people have received at least one COVID Disaster Payment.**

**\$6.9m paid out as at 27 Mar 2022.**

**Nil paid in initial payments in the week ending 27 Mar 2022.**

Cumulative payments made by Territory since activation on 25 Aug 2021.



Date	Cumulative Payments
27 Feb	\$6.9m
6 Mar	\$6.9m
13 Mar	\$6.9m
20 Mar	\$6.9m
27 Mar	\$6.9m

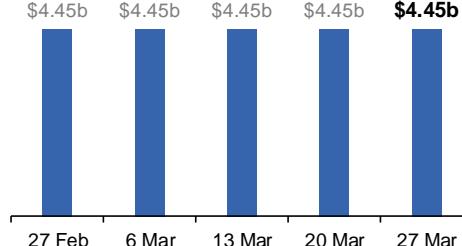
**Victoria**  
Lockdown (#6) from 6 Aug to 28 Oct  
Claiming period ended 9 Dec

**745,000 people have received at least one COVID Disaster Payment.**

**\$4.45b paid out as at 27 Mar 2022.**

**\$4,200 paid in initial and reoccurring payments in the week ending 27 Mar 2022.**

Cumulative payments made by State since activation on 8 Jun 2021.



Date	Cumulative Payments
27 Feb	\$4.45b
6 Mar	\$4.45b
13 Mar	\$4.45b
20 Mar	\$4.45b
27 Mar	\$4.45b

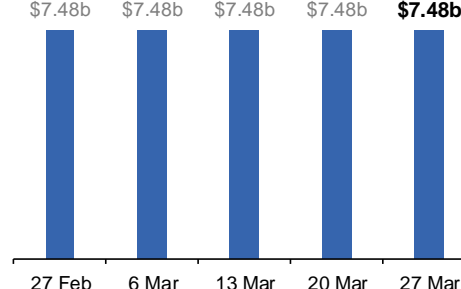
**New South Wales**  
Lockdown from 24 Jun to 10 Oct  
Claiming period ended 27 Nov

**1.08m people have received at least one COVID Disaster Payment.**

**\$7.48b paid out as at 27 Mar 2022.**

**\$1,200 paid in initial and reoccurring payments in the week ending 27 Mar 2022.**

Cumulative payments made by State since activation on 1 Jul 2021.



Date	Cumulative Payments
27 Feb	\$7.48b
6 Mar	\$7.48b
13 Mar	\$7.48b
20 Mar	\$7.48b
27 Mar	\$7.48b

**Australian Capital Territory**  
Lockdown from 12 Aug to 14 Oct  
Claiming period ended 25 Nov

**65,000 people have received at least one COVID Disaster Payment.**

**\$344.7m paid out as at 27 Mar 2022.**

**Nil paid in initial and reoccurring payments in the week ending 27 Mar 2022.**

Cumulative payments made by Territory since activation on 20 Aug 2021.



Date	Cumulative Payments
27 Feb	\$344.7m
6 Mar	\$344.7m
13 Mar	\$344.7m
20 Mar	\$344.7m
27 Mar	\$344.7m

# Pandemic Response Payments (continued)

Data as at midnight: 27 Mar 2022  
Updated weekly

## COVID-19 DISASTER PAYMENTS

### Tasmania

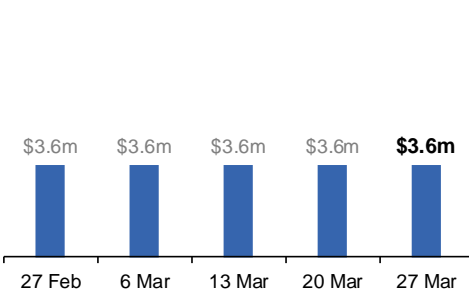
Lockdown from 15 Oct to 18 Oct  
Claiming period ended 12 Nov

**6,900 people have received at least one COVID Disaster Payment.**

**\$3.6m paid out as at 27 Mar 2022.**

**Nil paid in initial and reoccurring payments in the week ending 27 Mar 2022.**

Cumulative payments made by State since activation on 22 Oct 2021.



### Queensland

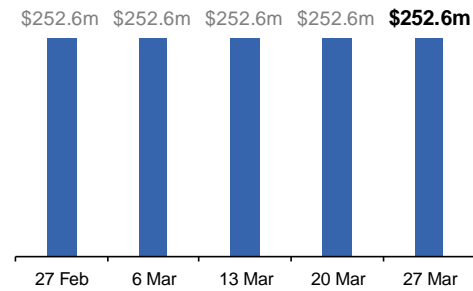
Lockdown from 31 Jul to 11 Aug  
Claiming period ended 28 Aug

**196,000 people have received at least one COVID Disaster Payment.**

**\$252.6m paid out as at 27 Mar 2022.**

**Nil paid in initial and reoccurring payments in the week ending 27 Mar 2022.**

Cumulative payments made by State since activation on 7 Aug 2021.



### South Australia

Lockdown from 21 to 27 Jul  
Claiming period ended 17 Aug

**86,000 people have received at least one COVID Disaster Payment.**

**\$48.2m paid out as at 27 Mar 2022.**

**Nil paid in initial and reoccurring payments in the week ending 27 Mar 2022.**

Cumulative payments made by State since activation on 28 Jul 2021.

