



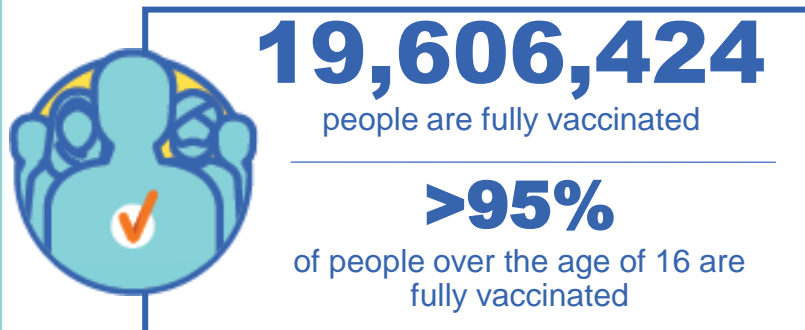
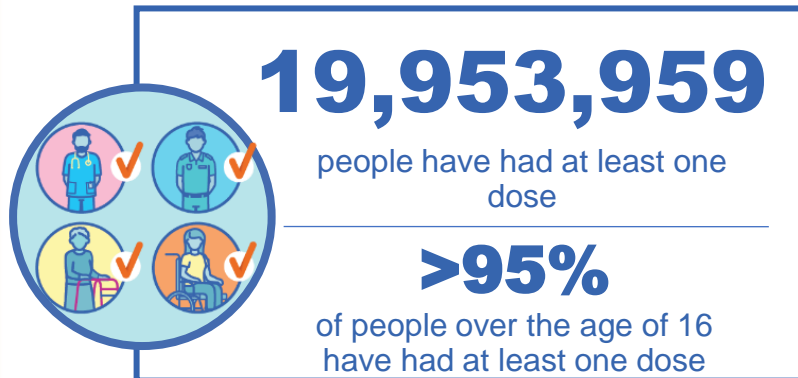
Australian Government
Operation COVID Shield

COVID-19 Vaccine Roll-out

29 March 2022

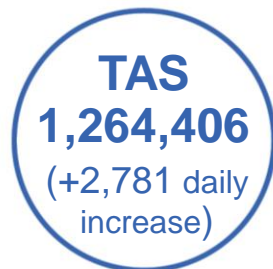
Data as at:
28 Mar 2022

Total vaccine doses



56,293,584 total vaccine
doses administered nationally as at 28 March

+73,431 recorded in the last 24 hours



*Administration state breakdown indicates state in which a vaccine was administered

**Overall dose count includes instances of more than three doses per person in a small number of cases.

Source: Australian Immunisation Register

Booster Vaccinations

Australia's COVID-19
Vaccine Roadmap

Data as at:
28 Mar 2022



187,817

Indigenous people who have
received more than two doses

51.3%

of eligible population (366,361)



162,687

Aged Care Residents who have
received more than two doses##

93.1%

of eligible population (174,766)



172,499

NDIS participants

20,501

NDIS residents

who have received more than two doses#

72.1%

of eligible population
(239,000)

86.9%

of eligible population
(23,000)



12,801,846

total people who
have received more than two doses nationally

+40,907 recorded in the last 24 hours

67.6% of people who are eligible (18,935,417)

have received more than two doses

NSW	People	% of Eligible
Cumulative	3,919,989	63.6%
Daily increase	11,517	

VIC	People	% of Eligible
Cumulative	3,467,327	69.1%
Daily increase	10,714	

QLD	People	% of Eligible
Cumulative	2,211,337	61.9%
Daily increase	7,215	

WA	People	% of Eligible
Cumulative	1,542,609	86.2%
Daily increase	5,650	

SA	People	% of Eligible
Cumulative	906,360	71.3%
Daily increase	3,159	

TAS	People	% of Eligible
Cumulative	289,856	70.6%
Daily increase	1,223	

ACT	People	% of Eligible
Cumulative	257,310	74.9%
Daily increase	586	

NT	People	% of Eligible
Cumulative	108,713	67.8%
Daily increase	565	

98,345

doses administered to persons
residing in other territories or with
missing residential information

*People may belong to multiple groups and could be represented in the above breakdowns multiple times.
NDIS participants data as at 27 March 2022. ## Aged Care Residents data as at 28 March 2022.

Source: Australian Immunisation Register

Vaccinations by residential location

Australia's COVID-19
Vaccine Roadmap

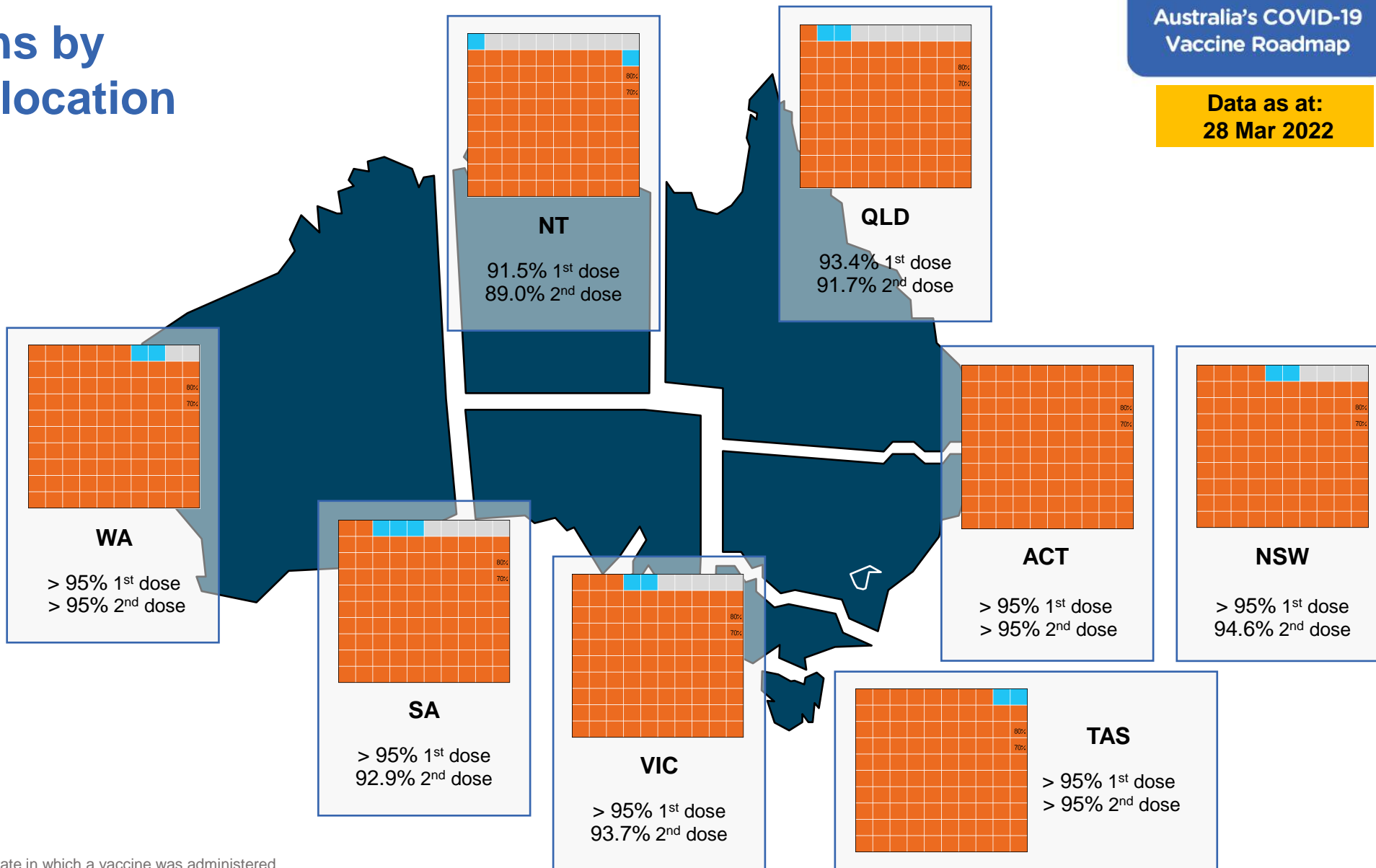
Data as at:
28 Mar 2022

First doses

Age	Today	4 weeks ago	8 weeks ago
16+	>95%	>95%	>95%
50+	>95%	>95%	>95%
70+	>95%	>95%	>95%

Fully vaccinated

Age	Today	4 weeks ago	8 weeks ago
16+	>95%	94.6%	93.8%
50+	>95%	>95%	>95%
70+	>95%	>95%	>95%



*Residential state may differ from the state in which a vaccine was administered

Commonwealth and Jurisdiction vaccine doses administered

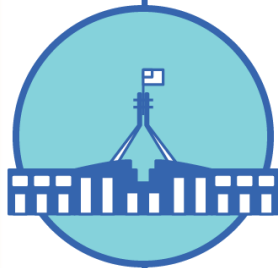
Data as at:
28 Mar 2022



56,293,584 total vaccine
doses administered nationally as at 28 March
+ 73,431 recorded in the last 24 hours



20,697,586
doses administered by state
and territory facilities
+ 15,651
recorded in the last 24 hours



35,595,998
doses administered by
commonwealth facilities
+ 57,780
recorded in the last 24 hours

34,330,781 total vaccine doses
administered in primary care settings
1,265,217 total vaccine doses
administered in aged care and disability
settings

NSW	Jurisdictions	Commonwealth
Cumulative	5,045,228	12,445,152
Daily increase	2,766	18,409

VIC	Jurisdictions	Commonwealth
Cumulative	5,976,175	8,872,603
Daily increase	3,776	14,673

QLD	Jurisdictions	Commonwealth
Cumulative	3,794,656	6,868,371
Daily increase	1,554	11,014

WA	Jurisdictions	Commonwealth
Cumulative	2,436,778	3,711,079
Daily increase	2,333	7,308

TAS	Jurisdictions	Commonwealth
Cumulative	609,626	654,780
Daily increase	1,300	1,481

SA	Jurisdictions	Commonwealth
Cumulative	1,763,747	2,112,711
Daily increase	1,641	3,764

ACT	Jurisdictions	Commonwealth
Cumulative	748,377	704,238
Daily increase	1,714	842

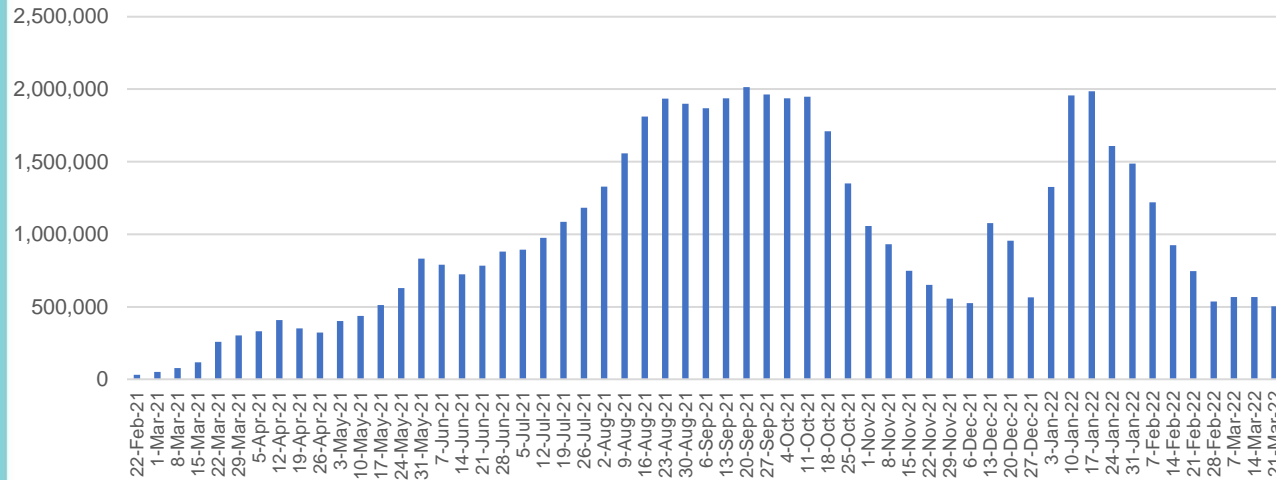
NT	Jurisdictions	Commonwealth
Cumulative	322,999	227,064
Daily increase	567	289

Vaccine milestone charts

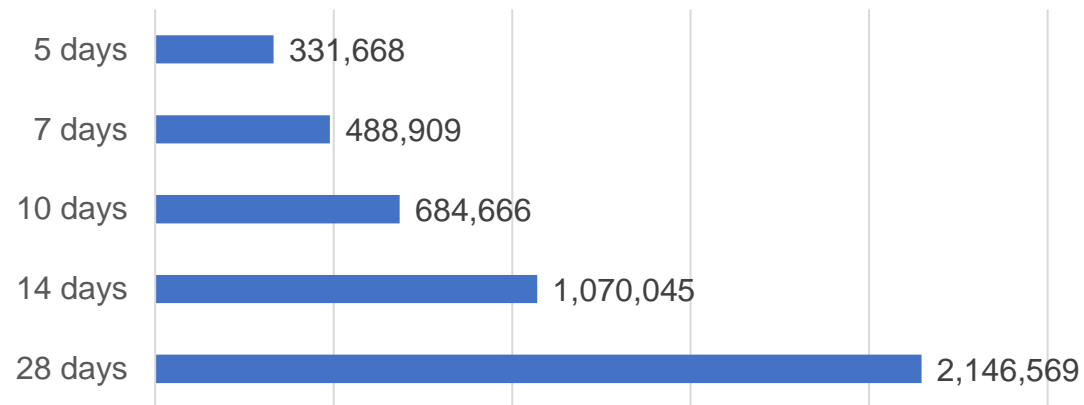
Data as at:
28 Mar 2022

Australia's COVID-19
Vaccine Roadmap

Doses Administered by Week

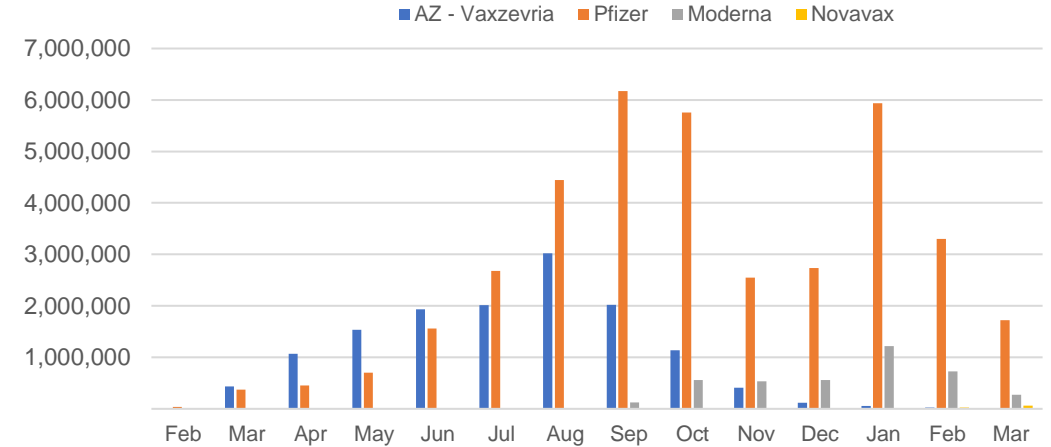


Doses Reported

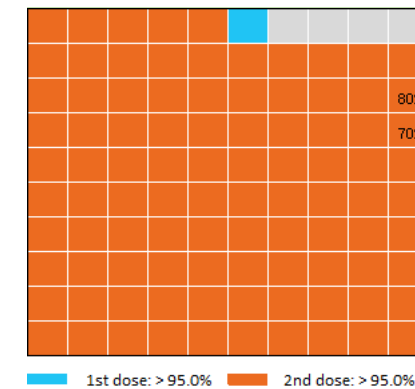


*Sourced from the Australian Immunisation Register.

Doses by administration month and vaccine type



Eligible population percentage coverage



*Each square represents 1% of the national population.
Squares are filled as milestones are achieved.

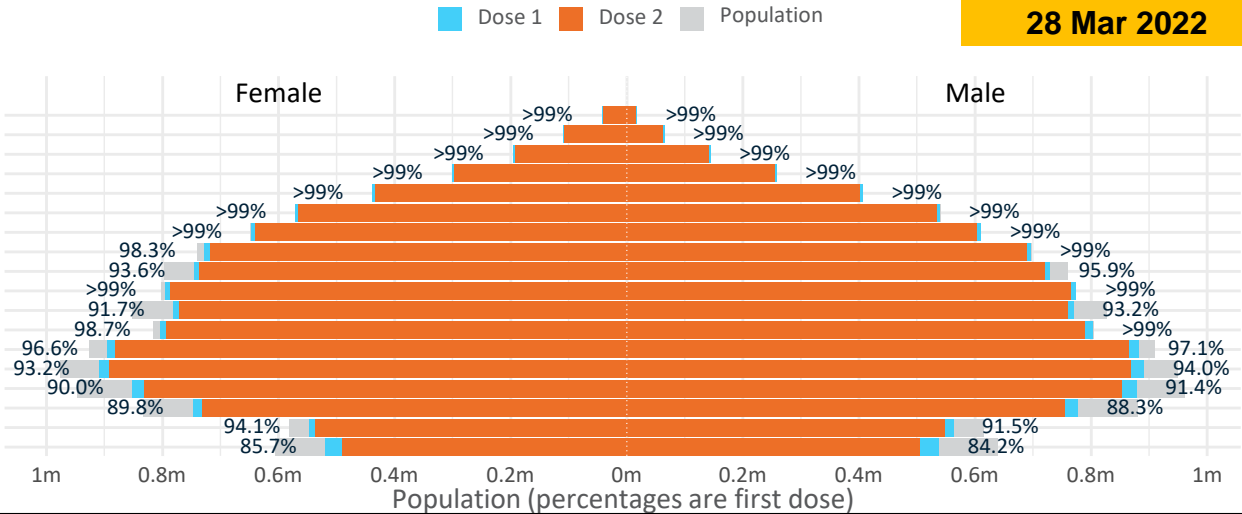
Doses by age and sex

First and second doses by age and sex

	16+	50+	12-15	5-11
Dose 1	96.77% (19,953,959 doses / 20,619,959 people)	>99% (8,820,573 doses / 8,749,703 people)	84.93% (1,056,473 doses / 1,243,990 people)	52.17% (1,187,660 doses / 2,276,638 people)
Dose 2	95.08% (19,606,424 doses / 20,619,959 people)	>99% (8,709,683 doses / 8,749,703 people)	79.97% (994,880 doses / 1,243,990 people)	25.39% (578,073 doses / 2,276,638 people)

Data as at:
28 Mar 2022

Age	Dose 1	Dose 2
95+	60,218 (>99%)	56,814 (>99%)
90-94	174,739 (>99%)	168,917 (>99%)
85-89	340,288 (>99%)	333,030 (>99%)
80-84	559,229 (>99%)	551,581 (>99%)
75-79	844,934 (>99%)	836,216 (>99%)
70-74	1,111,688 (>99%)	1,100,405 (>99%)
65-69	1,258,728 (>99%)	1,244,104 (98.9%)
60-64	1,425,209 (>99%)	1,408,435 (98.0%)
55-59	1,474,940 (94.8%)	1,457,661 (93.7%)
50-54	1,570,600 (>99%)	1,552,520 (>99%)
45-49	1,551,765 (92.5%)	1,531,734 (91.4%)
40-44	1,610,151 (>99%)	1,584,482 (97.8%)
35-39	1,782,233 (97.1%)	1,748,633 (95.3%)
30-34	1,808,719 (94.0%)	1,765,562 (91.8%)
25-29	1,739,635 (91.2%)	1,691,217 (88.7%)
20-24	1,531,105 (89.4%)	1,490,934 (87.1%)
16-19	1,109,778 (92.8%)	1,084,179 (90.7%)
12-15	1,056,473 (84.9%)	994,880 (80.0%)

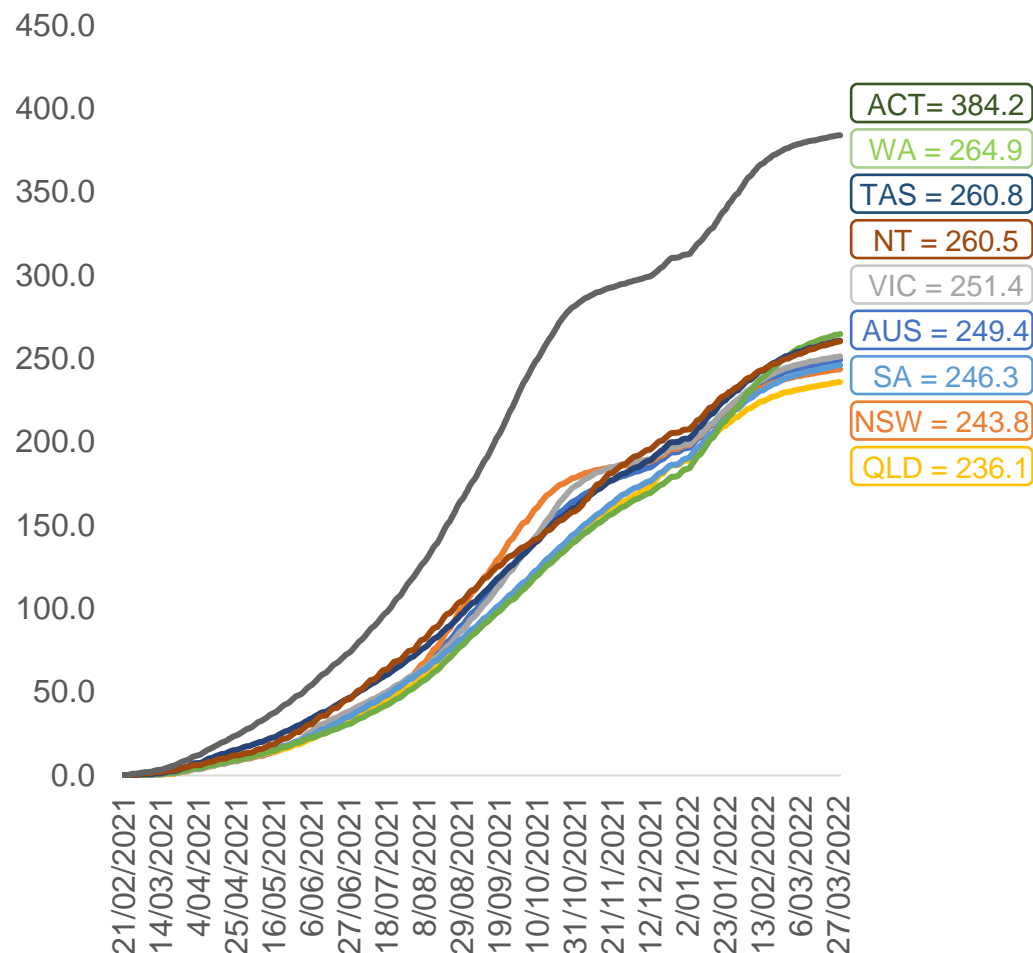


	AUS	ACT	NSW	NT	QLD	SA	TAS	VIC	WA
16 and over - dose 1	19,953,959	351,539	6,304,190	174,359	3,842,537	1,370,045	443,432	5,143,568	2,084,368
16 and over - dose 2	19,606,424	346,129	6,209,140	169,523	3,772,144	1,338,495	433,816	5,067,290	2,046,544
16 and over - population	20,619,959*	344,037	6,565,651	190,571	4,112,707	1,440,400	440,172	5,407,574	2,114,978
16 and over % with dose 1	96.77%	>99%	96.02%	91.49%	93.43%	95.12%	>99%	95.12%	98.55%
16 and over % with dose 2	95.08%	>99%	94.57%	88.96%	91.72%	92.93%	98.56%	93.71%	96.76%
5 to 11 - dose 1	1,187,660	31,744	353,549	13,086	207,813	83,834	28,432	323,870	137,999
5 to 11 - dose 2	578,073	19,873	179,556	5,438	101,477	41,659	17,953	154,429	55,142
5 to 11 - population	2,276,638	39,789	716,460	24,750	478,731	148,816	45,033	578,499	244,154
5 to 11 % with dose 1	52.17%	79.78%	49.35%	52.87%	43.41%	56.33%	63.14%	55.98%	56.52%
5 to 11 % with dose 2	25.39%	49.95%	25.06%	21.97%	21.20%	27.99%	39.87%	26.69%	22.58%
12 to 15 - dose 1	1,056,473	20,084	325,701	10,909	207,560	68,503	22,924	276,169	115,486
12 to 15 - dose 2	994,880	19,381	310,081	9,760	193,454	64,514	21,692	262,970	105,109
12 to 15 - population	1,243,990	19,693	390,330	13,060	270,146	82,747	26,308	308,611	132,869
12 to 15 % with dose 1	84.93%	>99%	83.44%	83.53%	76.83%	82.79%	87.14%	89.49%	86.92%
12 to 15 % with dose 2	79.97%	98.42%	79.44%	74.73%	71.61%	77.97%	82.45%	85.21%	79.11%

*National population will not equal sum of listed jurisdictions due to a small number of people counted in national population residing in some 'other' territories. Sum of state doses will not add to national total as some records are unable to be geocoded to a State or Territory.
Doses sourced from Australian Immunisation Register, population from ABS ERP June 2020

Vaccinations by location

Cumulative total doses administered vs eligible state populations*

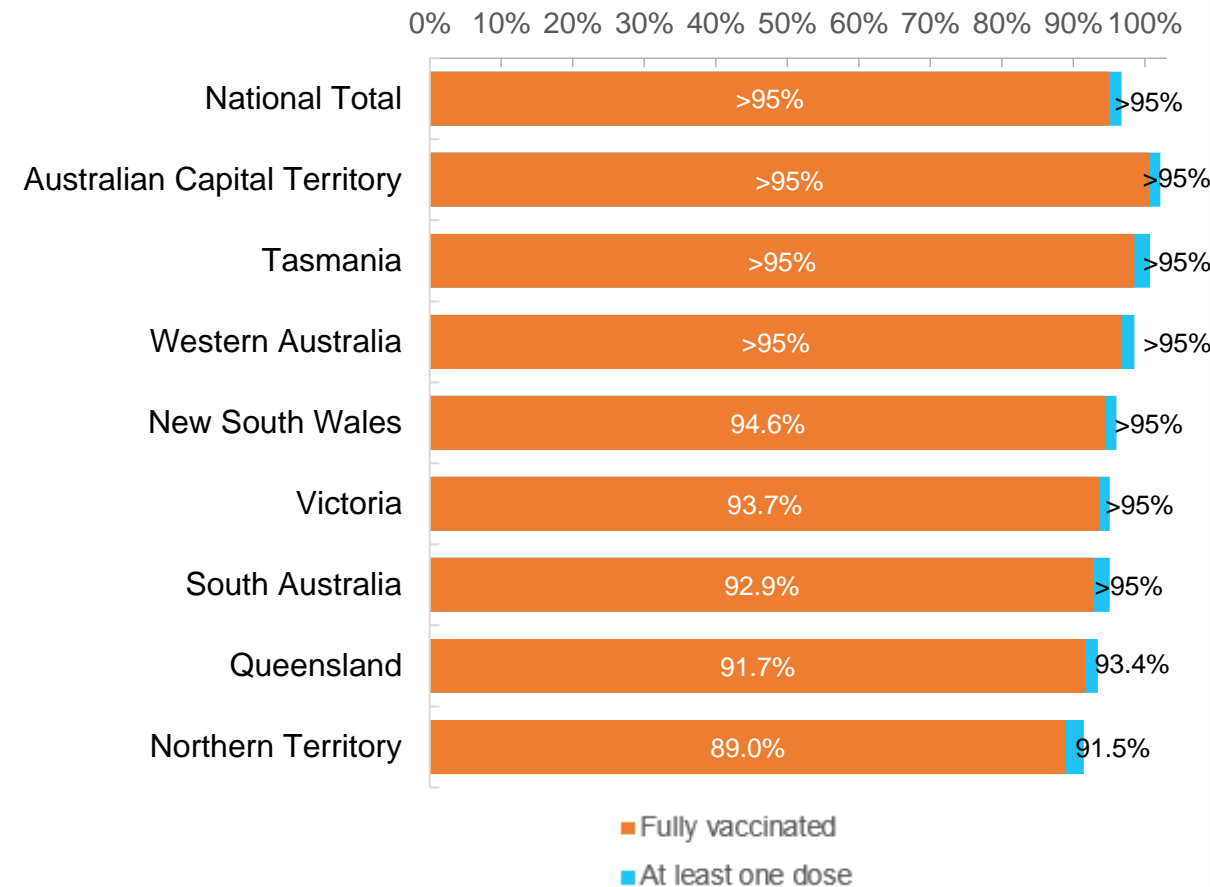


*Not an indication of percentage vaccinated, numbers will exceed 100 due to multiple doses required per person of the population. All doses are included for those aged 12 and above and are based on vaccination provider location.

Data as at:
28 Mar 2022

Australia's COVID-19
Vaccine Roadmap

First and Second Doses by residential location



Aboriginal and Torres Strait Islander peoples

Number of people vaccinated

Data as at:
22 Mar 2022
Updated weekly

Australia's COVID-19
Vaccine Roadmap



435,465

people over the age of 16
have had at least one dose

84.0%

of people over the age of 16
have had at least one dose



413,329

people over the age of 16
are fully vaccinated

79.7%

of people over the age of 16 are
fully vaccinated



People aged 12 – 15 years

48,488

42,163

68.3%

At least one dose

59.4%

Fully vaccinated

178 Aboriginal community controlled health services (ACCHS)

0#

50

27

44

12

3

21

21

ACT

NSW

NT

QLD

SA

TAS

VIC

WA

Medicare Address State ^{##}	Individuals Dose 1	Individuals Dose 1 %	Individuals Dose 2	Individuals Dose 2 %
Australian Capital Territory	4,826	91.2%	4,705	88.9%
New South Wales	134,554	86.6%	131,266	84.5%
Northern Territory	42,190	89.2%	39,740	84.0%
Queensland	114,999	81.0%	108,745	76.6%
South Australia	19,741	79.4%	18,169	73.1%
Tasmania	13,896	88.4%	13,429	85.4%
Victoria	35,245	89.6%	34,372	87.4%
Western Australia	53,111	84.8%	47,861	76.4%
Unknown/Other Territories	16,903	65.2%	15,042	58.0%
Totals	435,465	84.0%	413,329	79.7%

Source: Australian Immunisation Register

*Identifying as Aboriginal and Torres Strait Islander is optional and the estimated population may be under reported.

**Includes all Aboriginal and Torres Strait Islander peoples who have received a vaccination, not limited to those administered in an ACCHS setting

#ACCHS in the ACT are currently operating as a Commonwealth Vaccine Clinics so not included to avoid double counting

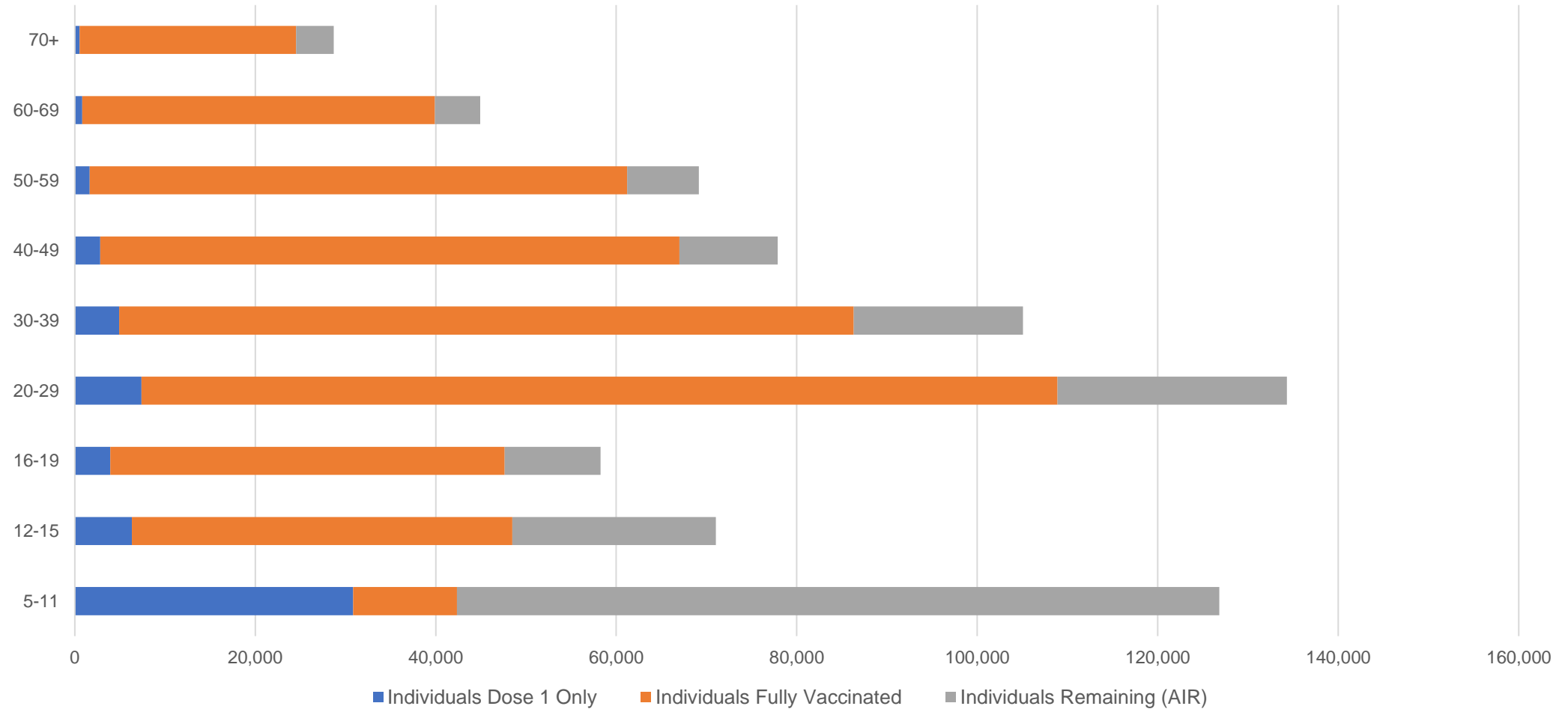
##The above table includes all identified Aboriginal and Torres Strait Islander people who are aged 16 and above by their state of residence.

Aboriginal and Torres Strait Islander peoples

Number of people vaccinated by age

Data as at:
22 Mar 2022
Updated weekly

Australia's COVID-19
Vaccine Roadmap



Source: Australian Immunisation Register

Commonwealth primary care

Data as at:
28 Mar 2022

Australia's COVID-19
Vaccine Roadmap



Primary care vaccine administration sites

5,793	128	178	3,587
GPs	CVCs	ACCHS	Pharmacies



34,330,781 total vaccine doses administered
primary care settings as at 28 March
+ 57,413 recorded in the last 24 hours

Primary care vaccinations by provider type

	Doses administered	Daily increase	7 day increase
General Practice* includes other Commonwealth	27,787,899	36,737	229,544
Pharmacy	6,542,882	20,676	121,209

NSW
11,897,343
(+18,413 daily increase)

VIC
8,565,654
(+14,579 daily increase)

QLD
6,596,708
(+11,045 daily increase)

WA
3,583,494
(+7,343 daily increase)

TAS
635,291
(+1,480 daily increase)

SA
2,036,295
(+3,843 daily increase)

ACT
539,909
(+757 daily increase)

NT
205,781
(+288 daily increase)

270,306

doses administered to persons
residing in other territories or with
missing residential information

*General practice includes Commonwealth Vaccination Clinics, Aboriginal Community Health Centres, Royal Flying Doctor Service and other Commonwealth vaccination facilities

Source: Australian Immunisation Register

Data as at:
28 Mar 2022

Commonwealth aged care and disability doses administered



1,265,217 (+ 367 last 24 hours)

Total vaccine doses administered in aged care and disability facilities as at 28 March

Number of doses administered as part of the Commonwealth aged and disability care rollout

NSW
558,151
(+56 daily increase)

VIC
234,878
(-1# daily increase)

QLD
200,600
(+195 daily increase)

WA
106,463
(+96 daily increase)

TAS
22,476
(+1 daily increase)

SA
83,932
(+5 daily increase)

ACT
16,704
(-2 # daily increase)

NT
7,480
(+21 daily increase)

34,533

doses administered to persons residing in other territories or with missing residential information

Source: Australian Immunisation Register

*Sourced from the Australian Immunisation Register. Includes all persons vaccinated at participating residential aged care, disability and related industry settings.

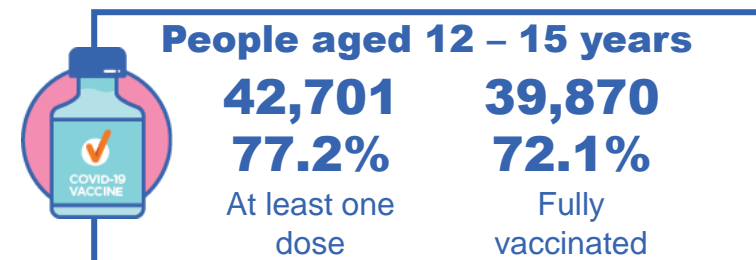
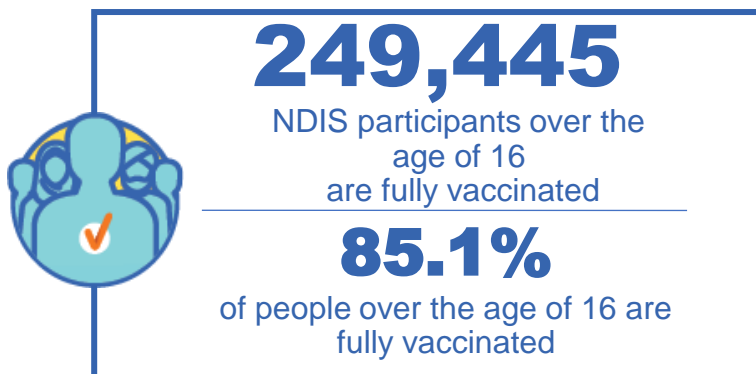
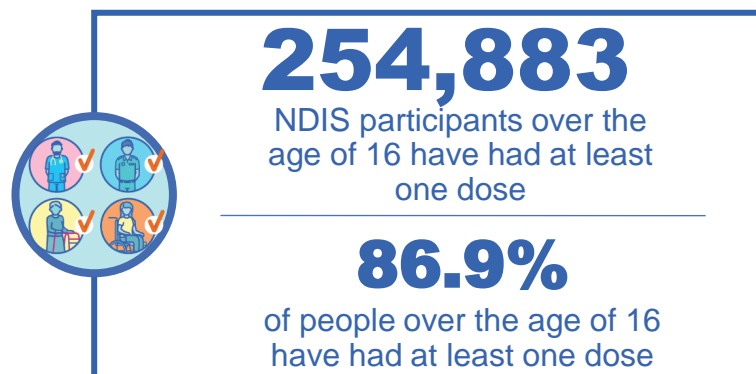
**State level breakdown indicates the residential location and may not align to the state in which the vaccination occurred.

Numbers are calculated as difference in daily cumulative reported numbers to allow for historical corrections in all data sources. This can occasionally result in negative numbers, such as for VIC and ACT, where historical details about doses have been updated.

National Disability Insurance Scheme (NDIS) reported vaccinations

Data as at:
24 March 2022
Updated weekly

Australia's COVID-19
Vaccine Roadmap



NDIS participant vaccinations

	People aged 16+ with at least one dose	People aged 16+ fully vaccinated	% People aged 16+ with at least one dose	% People aged 16+ fully vaccinated
ACT	4,830	4,761	89.1%	87.8%
NSW	78,482	77,152	87.5%	86.0%
NT	2,204	2,119	77.3%	74.3%
QLD	50,153	49,017	85.3%	83.3%
SA	20,759	20,168	84.6%	82.2%
TAS	6,396	6,215	87.0%	84.5%
VIC	67,848	66,576	88.1%	86.5%
WA	24,211	23,437	87.9%	85.1%
National	254,883	249,445	86.9%	85.1%

Source: Linkage between National Disability Insurance Agency data and the Australian Immunisation Register. Total NDIS participant numbers as at 28th February. Australian Immunisation Register data as at 23 March. Includes all participants regardless of residence type.

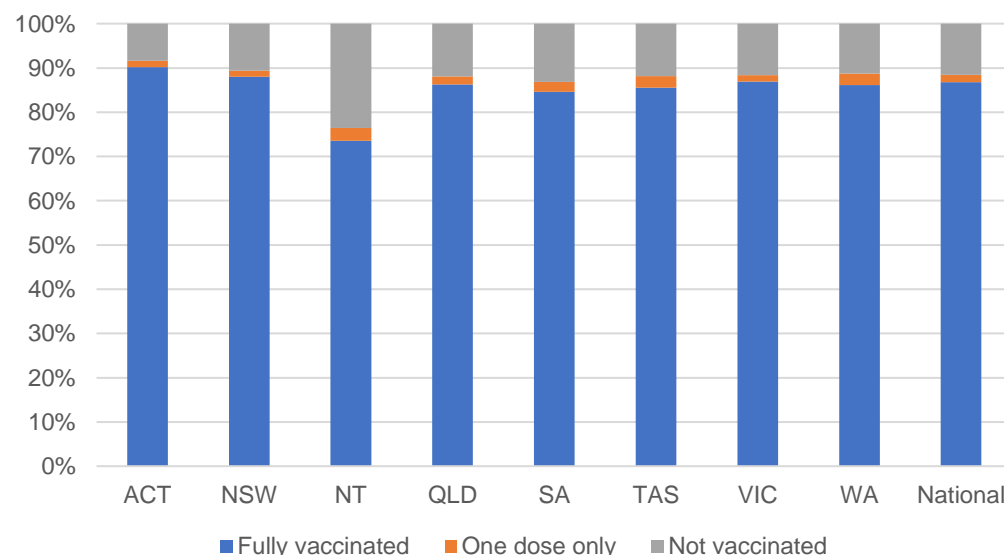
National Disability Insurance Scheme (NDIS) reported vaccinations

Data as at:
24 March 2022
Updated Weekly

Australia's COVID-19
Vaccine Roadmap

NATIONAL	Total people with at least one dose	People fully vaccinated	Total number of individuals in cohort	% People with at least one dose	% People fully vaccinated
NDIS participants living in disability accommodation	20,659	20,275	23,352	88.5%	86.8%

NDIS participants in disability and aged care accommodation



Source: Linkage between National Disability Insurance Agency data and the Australian Immunisation Register. Includes participants residing in disability accommodation only.

Source: Total NDIS participant numbers as at 28th February. Participant data as at 23 March. Australian Immunisation Register data as at 23 March. Worker data as at 24 March.

NDIS workforce vaccinations

	NDIS workers with at least one dose	NDIS workers fully vaccinated	% NDIS workers with at least one dose	% NDIS workers fully vaccinated
NSW	120,488	116,832	98.1%	95.1%
VIC	116,141	110,028	98.2%	93.1%
QLD	69,327	68,478	97.4%	96.3%
WA	32,724	30,401	98.5%	91.5%
SA	35,143	31,646	98.2%	88.4%
TAS	10,783	10,500	99.7%	97.1%
ACT	3,547	3,516	99.6%	98.8%
NT	3,403	3,253	97.6%	93.3%
TOTAL	391,556	374,654	98.1%	93.9%

Source: the NDIS Commission has established a requirement for registered NDIS providers who provide intensive disability support services to report on the vaccination status of workers they employ, or otherwise engage, to deliver NDIS-funded supports and services, and who are required to be vaccinated in accordance with in-force state and territory public health orders. The statistics reflect data reported to the NDIS Commission by registered NDIS providers and should be considered indicative and subject to change

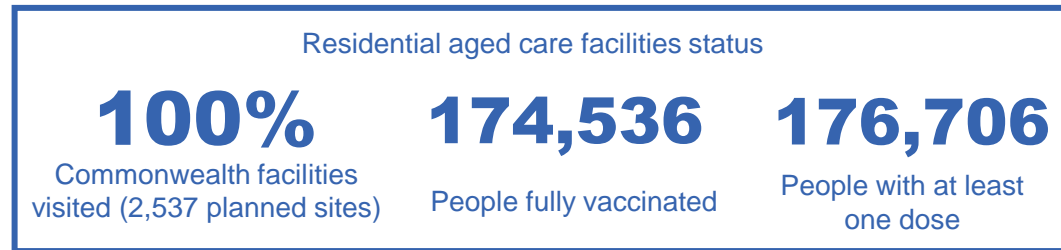
Note: Some registered NDIS providers are yet to report on the vaccination status of their workforce. The NDIS Commission is working with those providers around reporting requirements.

Remaining workers not included include those exempt from vaccination requirements, workers whose vaccination status is not yet verified by the provider (such as workers on leave) and provider reporting anomalies.

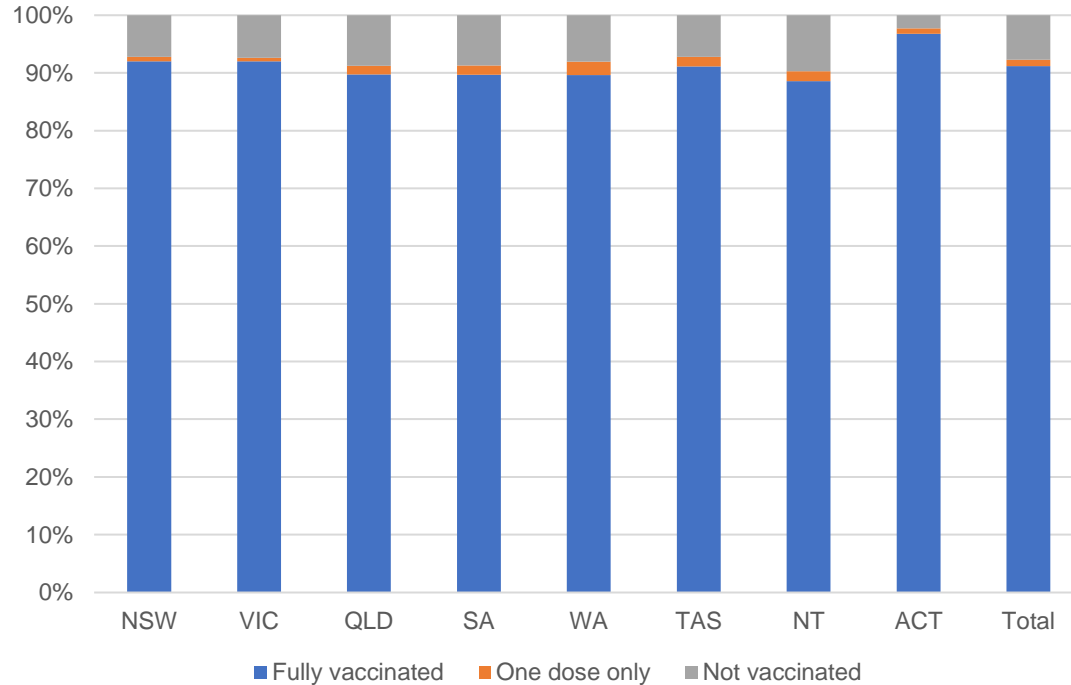
Residential aged care vaccination rollout

Australia's COVID-19
Vaccine Roadmap

Data as at:
24 Mar 2022
Updated weekly



Aged care resident vaccinations



Aged care worker vaccinations

Jurisdictions	Total workers with at least one dose	Workers fully vaccinated	% Workers with at least one dose	% Workers fully vaccinated
NSW	78,130	78,121	98.7%	98.7%
VIC	66,398	66,397	96.9%	96.9%
QLD	48,462	48,455	98.7%	98.7%
SA	26,362	26,342	97.7%	97.6%
WA	23,583	23,580	98.1%	98.1%
TAS	7,676	7,676	100.0%	100.0%
NT	844	844	100.0%	100.0%
ACT	3,038	3,038	99.9%	99.9%
Total	254,493	254,453	98.1%	98.1%

Source: My Aged Care Portal vaccination progress

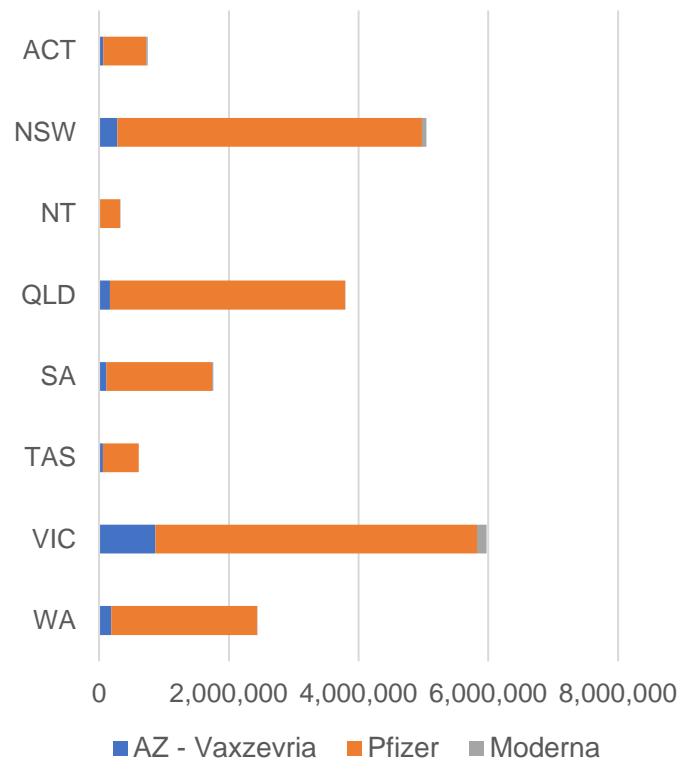
*Status updates are provided by facilities at least once per week. Reporting is updated Monday to Friday to encompass different facility updates being made on different days.

Data is sourced directly from Aged Care Service Providers and is not drawn or closely aligned with data from AIR due to inconsistencies and potential lags in uploading of records.

Data as at:
28 Mar 2022

Jurisdiction administered

Total vaccine doses administered in State and Territory clinics as at 28 March



20,697,586 total vaccine doses administered
in State and Territory clinics as at 28 March
+ **15,651** recorded in the last 24 hours
+ **135,033** recorded in the last 7 days

NSW
5,045,228
(+2,766 daily
increase)

VIC
5,976,175
(+3,776 daily
increase)

QLD
3,794,656
(+1,554 daily
increase)

WA
2,436,778
(+2,333 daily
increase)

TAS
609,626
(+1,300 daily
increase)

SA
1,763,747
(+1,641 daily
increase)

ACT
748,377
(+1,714 daily
increase)

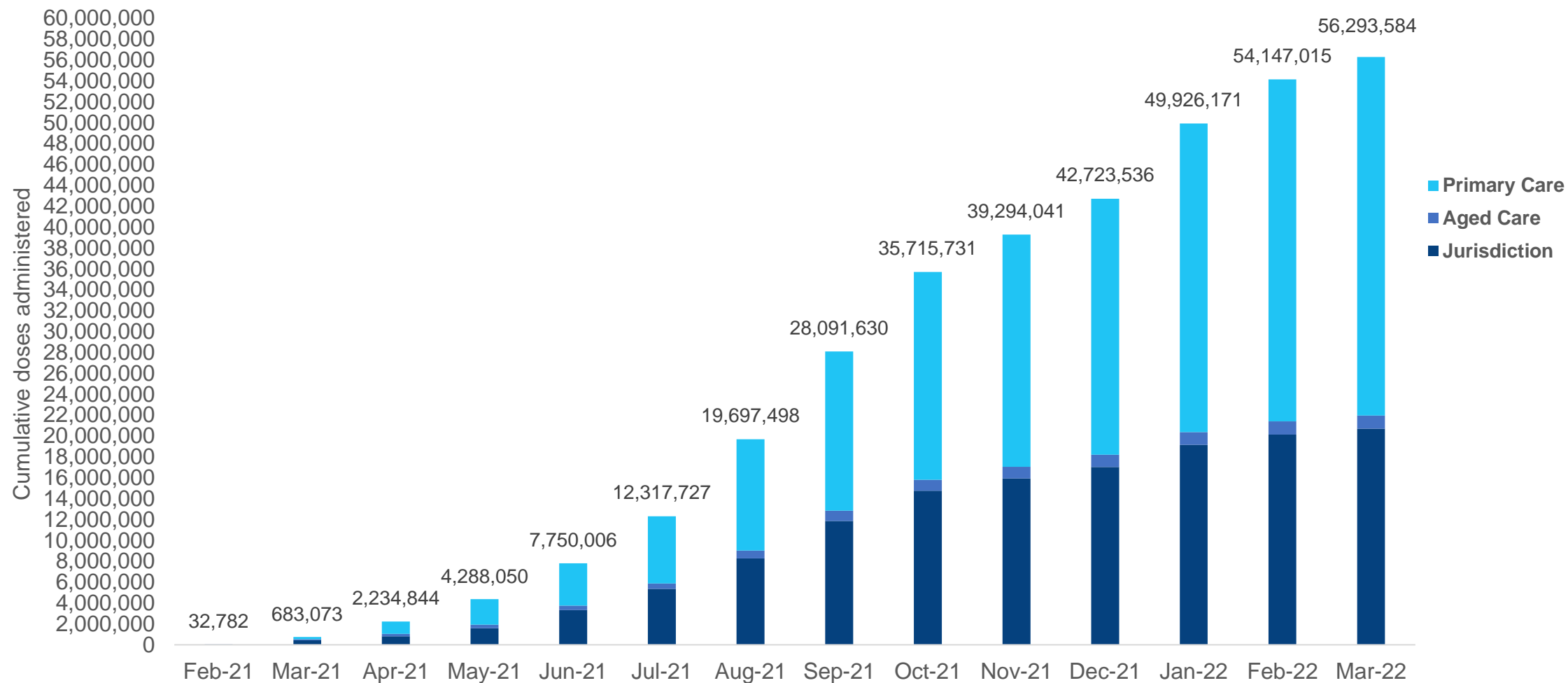
NT
322,999
(+567 daily
increase)

*Sourced from the Australian Immunisation Register. Numbers are calculated as difference in daily cumulative reported numbers to allow for historical corrections.

Source: Australian Immunisation Register

Cumulative doses administered by channel

Data as at:
28 Mar 2022



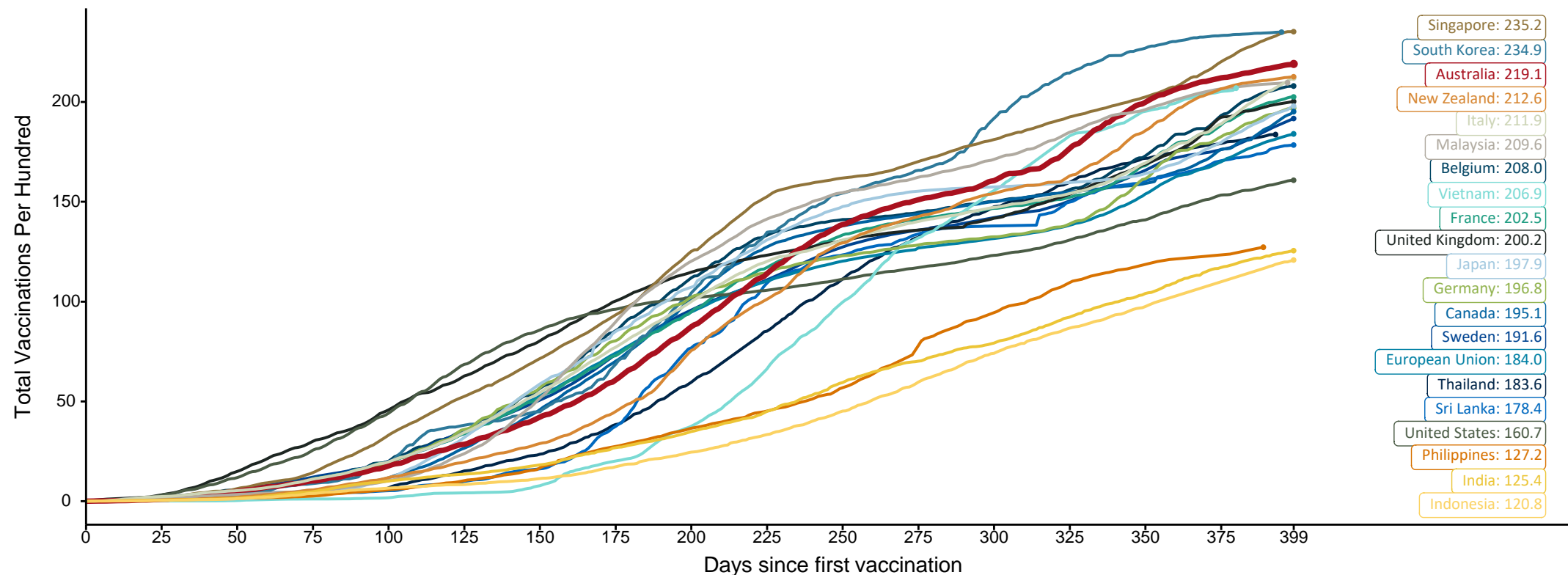
Source: Australian Immunisation Register

Doses at equivalent stages of rollout (Day 399)

Data as at:
28 Mar 2022

The x-axis is truncated at the length of Australia's vaccination program. Countries with intermittent reporting have had their doses per 100 imputed to Australia's current stage of rollout. Israel excluded as it is beyond scale of the graph

Cumulative doses administered (28 Mar): **56,293,584**



Note: From 11 January 2022, data for Australia includes all doses administered to people 5 and over. Prior to 11 January, data was for 12 and over.

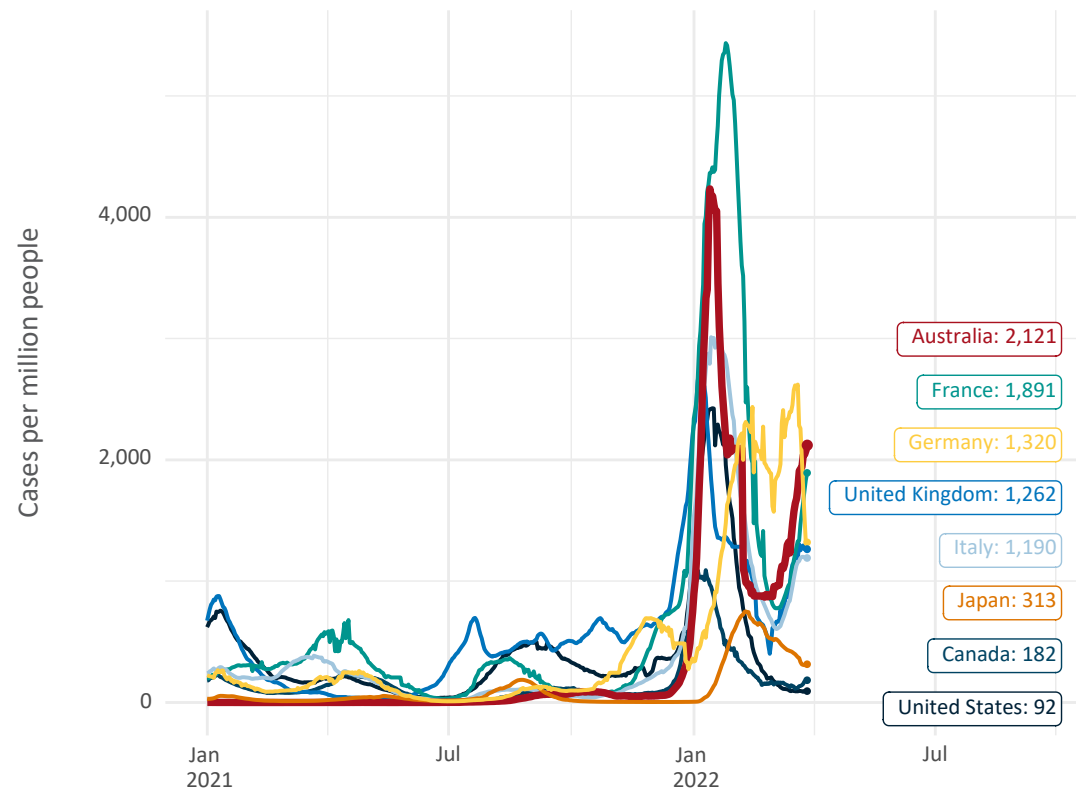
Source: Department of Health (Australia), Our World in Data (international)

Latest data: 28 March

International data – COVID-19

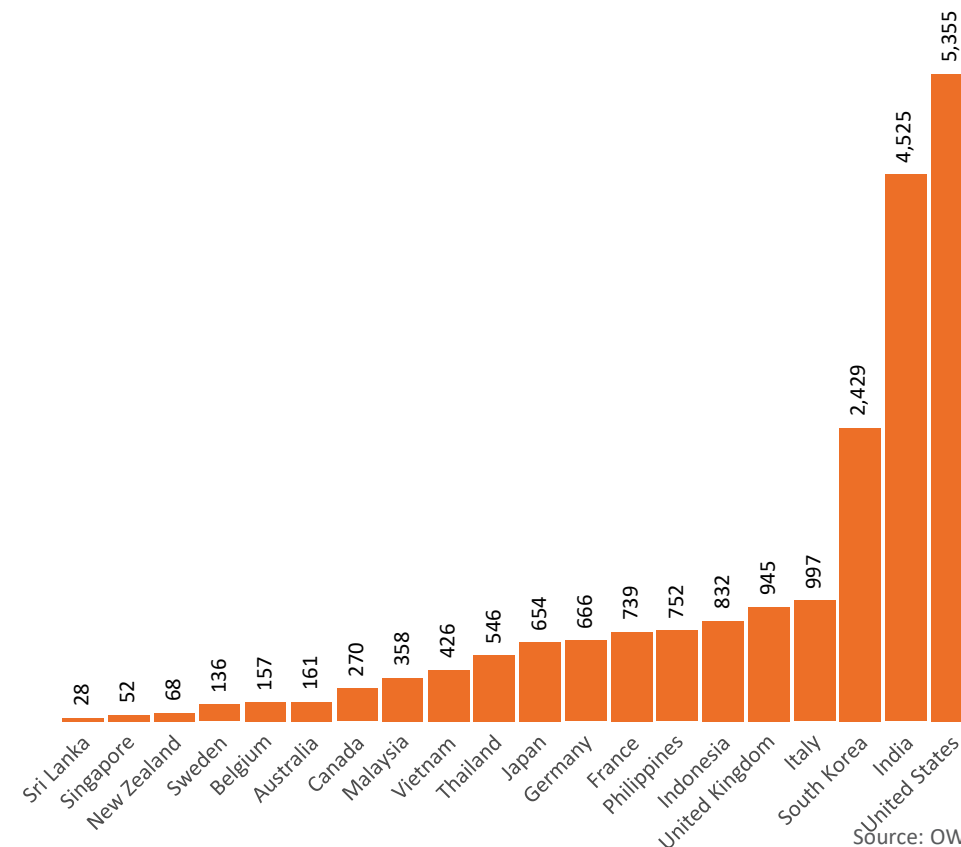
Data as at:
28 Mar 2022

New daily cases per million in 2021, Australia and G7 countries
Smoothed - 7 day average



Source: OWID
Data downloaded: 29 Mar 2022 09:12
Latest data: 27 Mar 2022

COVID-19 deaths in past 7 days - Australia and select countries



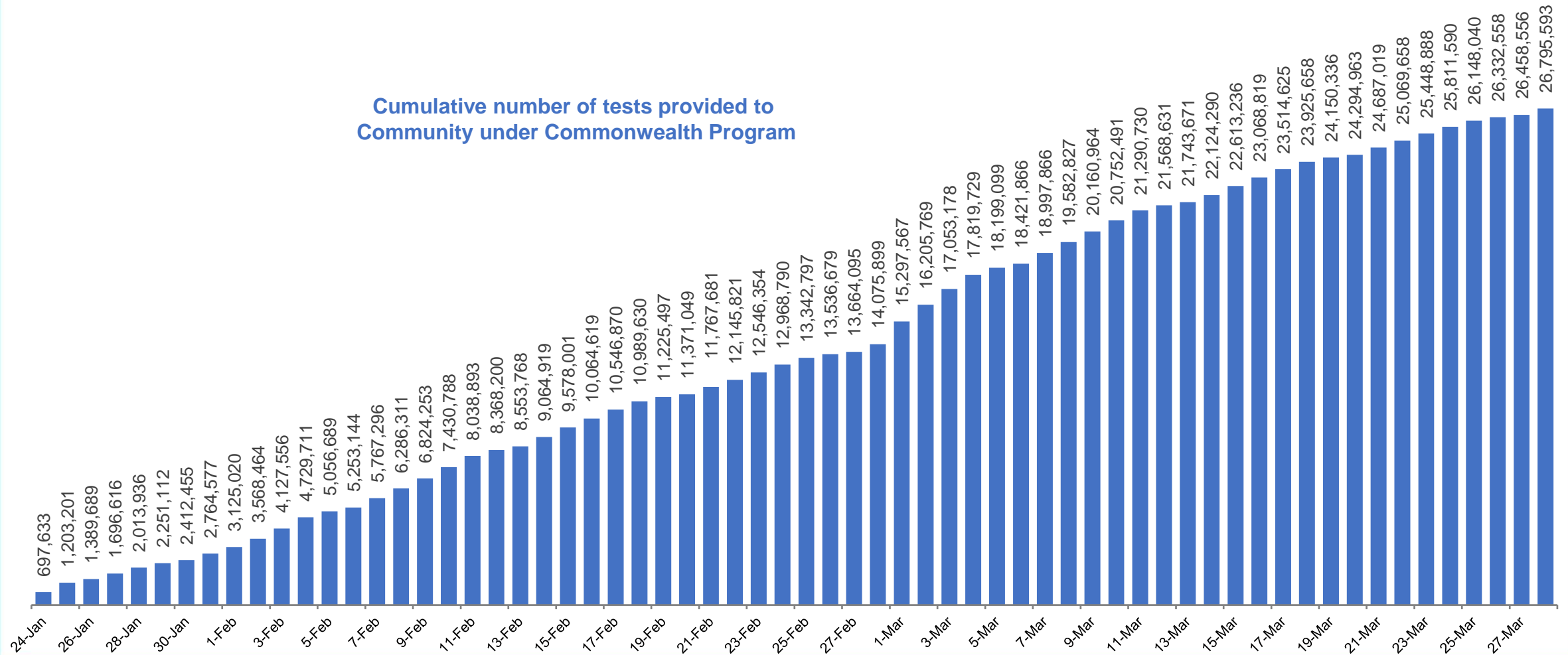
Source: OWID
Data downloaded: 29 Mar 2022 09:12
Latest data: 27 Mar 2022

Data as at:
28 Mar 2022

Concessional rapid antigen test program

5,619 pharmacies have delivered over **26.7 million rapid antigen tests** to more than **4.2m eligible concession card holders** under the Government's concessional rapid antigen test program.

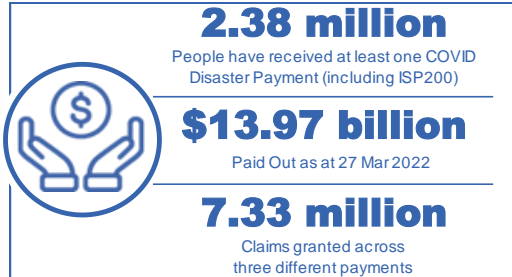
Cumulative number of tests provided to
Community under Commonwealth Program



Pandemic Response Payments

Australia's COVID-19
Vaccine Roadmap

Data as at midnight: 27 Mar 2022
Updated weekly



COVID Disaster Payment:	5.89 million claims received - 2.19 million individuals paid a total of \$12.59 billion.
\$200 Income Support Payment:	353,000 claims received - 183,000 individuals paid a total of \$268.9 million.
Pandemic Leave Disaster Payment:	1.59 million claims received - 980,000 individuals paid a total of \$1.11 billion.



COVID Disaster Payment

assisting during a lockdown event in a Commonwealth hotspot.

Income Support Payment \$200

for income support recipients who lost at least 8 hours of work.

Pandemic Leave Disaster Payment

for those who have to self-isolate, quarantine or care.

For more information visit:
servicesaustralia.gov.au

COVID-19 DISASTER PAYMENTS

Northern Territory

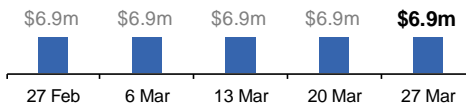
Lockdown (#3) from 16 Nov to 22 Nov
Claiming period ended 27 Dec

7,500 people have received at least one COVID Disaster Payment.

\$6.9m paid out as at 27 Mar 2022.

Nil paid in initial payments in the week ending 27 Mar 2022.

Cumulative payments made by Territory since activation on 25 Aug 2021.



Victoria

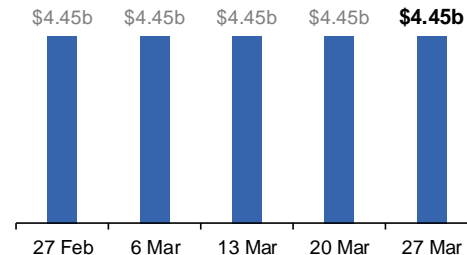
Lockdown (#6) from 6 Aug to 28 Oct
Claiming period ended 9 Dec

745,000 people have received at least one COVID Disaster Payment.

\$4.45b paid out as at 27 Mar 2022.

\$4,200 paid in initial and reoccurring payments in the week ending 27 Mar 2022.

Cumulative payments made by State since activation on 8 Jun 2021.



New South Wales

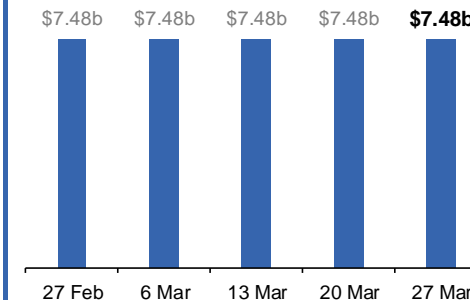
Lockdown from 24 Jun to 10 Oct
Claiming period ended 27 Nov

1.08m people have received at least one COVID Disaster Payment.

\$7.48b paid out as at 27 Mar 2022.

\$1,200 paid in initial and reoccurring payments in the week ending 27 Mar 2022.

Cumulative payments made by State since activation on 1 Jul 2021.



Australian Capital Territory

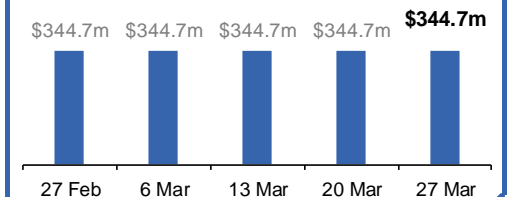
Lockdown from 12 Aug to 14 Oct
Claiming period ended 25 Nov

65,000 people have received at least one COVID Disaster Payment.

\$344.7m paid out as at 27 Mar 2022.

Nil paid in initial and reoccurring payments in the week ending 27 Mar 2022.

Cumulative payments made by Territory since activation on 20 Aug 2021.



Pandemic Response Payments (continued)

Data as at midnight: 27 Mar 2022
Updated weekly

COVID-19 DISASTER PAYMENTS

Tasmania

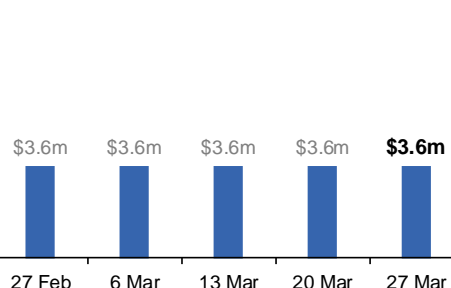
Lockdown from 15 Oct to 18 Oct
Claiming period ended 12 Nov

6,900 people have received at least one COVID Disaster Payment.

\$3.6m paid out as at 27 Mar 2022.

Nil paid in initial and reoccurring payments in the week ending 27 Mar 2022.

Cumulative payments made by State since activation on 22 Oct 2021.



Queensland

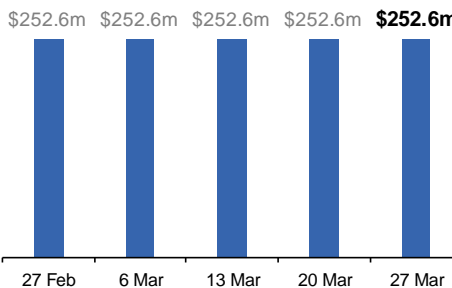
Lockdown from 31 Jul to 11 Aug
Claiming period ended 28 Aug

196,000 people have received at least one COVID Disaster Payment.

\$252.6m paid out as at 27 Mar 2022.

Nil paid in initial and reoccurring payments in the week ending 27 Mar 2022.

Cumulative payments made by State since activation on 7 Aug 2021.



South Australia

Lockdown from 21 to 27 Jul
Claiming period ended 17 Aug

86,000 people have received at least one COVID Disaster Payment.

\$48.2m paid out as at 27 Mar 2022.

Nil paid in initial and reoccurring payments in the week ending 27 Mar 2022.

Cumulative payments made by State since activation on 28 Jul 2021.

