




Australian Government
Operation COVID Shield

COVID-19 Vaccine Roll-out

28 March 2022


Data as at:
27 Mar 2022

Total vaccine doses



19,950,701
people have had at least one dose

>95%
of people over the age of 16 have had at least one dose



19,601,978
people are fully vaccinated

>95%
of people over the age of 16 are fully vaccinated



12,760,939
people over the age of 16 who have received more than two doses



56,220,153 total vaccine doses administered nationally as at 27 March

+30,417 recorded in the last 24 hours

NSW
17,469,205
(+6,504 daily increase)

VIC
14,830,329
(+8,390 daily increase)

QLD
10,650,459
(+5,074 daily increase)

WA
6,138,216
(+3,699 daily increase)

TAS
1,261,625
(+2,175 daily increase)

SA
3,871,053
(+2,953 daily increase)

ACT
1,450,059
(+1,290 daily increase)

NT
549,207
(+332 daily increase)

*Administration state breakdown indicates state in which a vaccine was administered

**Overall dose count includes instances of more than three doses per person in a small number of cases.

Source: Australian Immunisation Register

Booster Vaccinations

Data as at:
27 Mar 2022



186,918
Indigenous people who have received more than two doses
51.0%
of eligible population (366,264)



162,367
Aged Care Residents who have received more than two doses##
93.0%
of eligible population (174,536)



171,414 NDIS participants | **20,427** NDIS residents
who have received more than two doses#
71.7% of eligible population (239,000) | **86.6%** of eligible population (23,000)



12,760,939 total people who have received more than two doses nationally
+11,602 recorded in the last 24 hours
67.4% of people who are eligible (18,929,644) have received more than two doses

NSW	People	% of Eligible
Cumulative	3,908,472	63.5%
Daily increase	2,558	

VIC	People	% of Eligible
Cumulative	3,456,613	68.9%
Daily increase	3,148	

QLD	People	% of Eligible
Cumulative	2,204,122	61.7%
Daily increase	2,215	

WA	People	% of Eligible
Cumulative	1,536,959	86.0%
Daily increase	1,599	

SA	People	% of Eligible
Cumulative	903,201	71.1%
Daily increase	970	

TAS	People	% of Eligible
Cumulative	288,633	70.3%
Daily increase	94	

ACT	People	% of Eligible
Cumulative	256,724	74.7%
Daily increase	315	

NT	People	% of Eligible
Cumulative	108,148	67.5%
Daily increase	106	

98,067

doses administered to persons residing in other territories or with missing residential information

*People may belong to multiple groups and could be represented in the above breakdowns multiple times.

Aged Care Residents data as at 25 March 2022. # NDIS participants data as at 24 March 2022.

Source: Australian Immunisation Register

Data as at:
27 Mar 2022

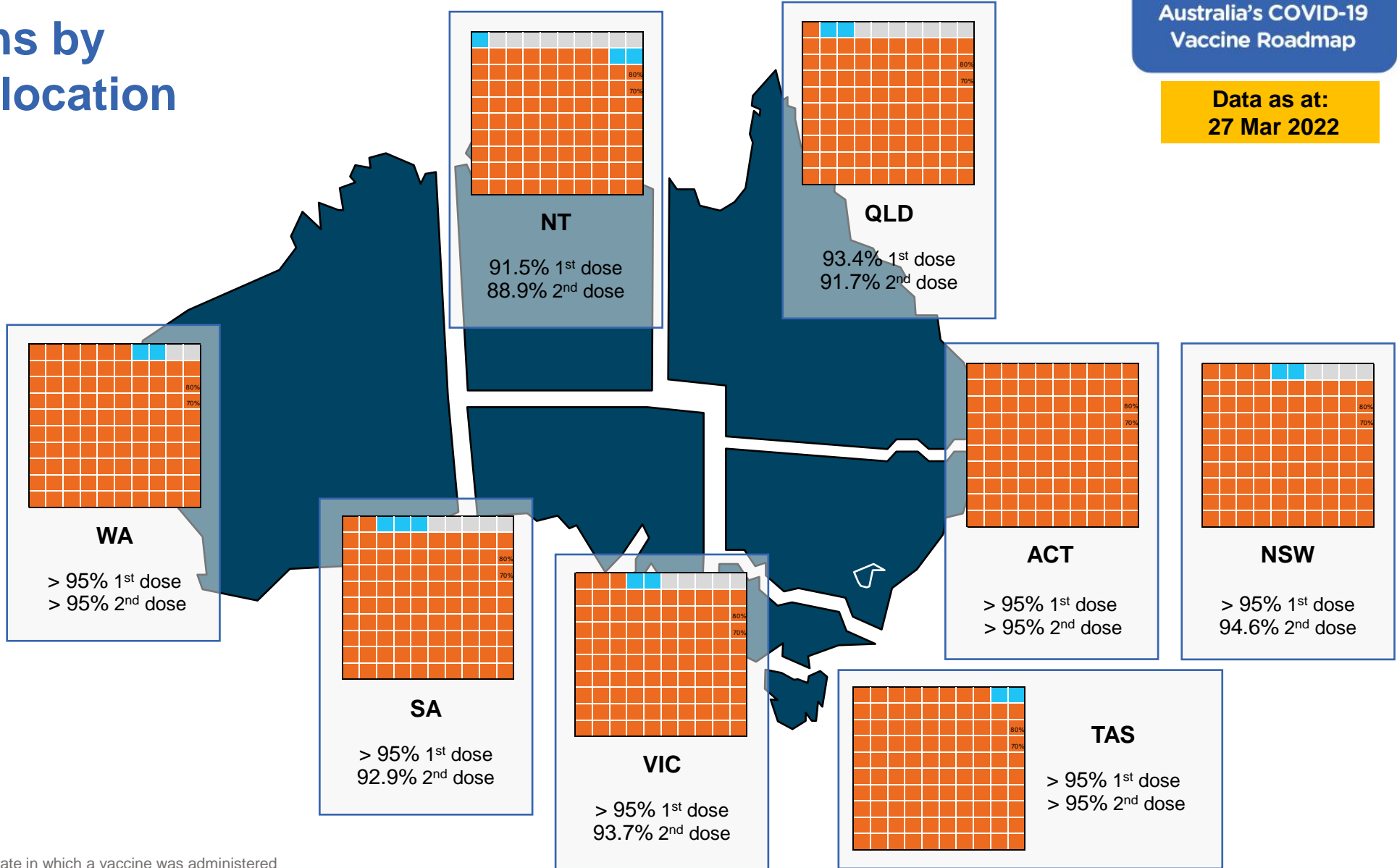
Vaccinations by residential location

First doses

Age	Today	4 weeks ago	8 weeks ago
16+	>95%	>95%	>95%
50+	>95%	>95%	>95%
70+	>95%	>95%	>95%

Fully vaccinated

Age	Today	4 weeks ago	8 weeks ago
16+	>95%	94.6%	93.7%
50+	>95%	>95%	>95%
70+	>95%	>95%	>95%



*Residential state may differ from the state in which a vaccine was administered

Commonwealth and Jurisdiction vaccine doses administered

Data as at:
27 Mar 2022



56,220,153 total vaccine doses administered nationally as at 27 March

+ 30,417 recorded in the last 24 hours

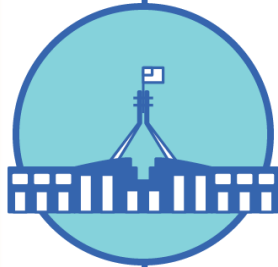


20,681,935

doses administered by state and territory facilities

+ 17,695

recorded in the last 24 hours



35,538,218

doses administered by commonwealth facilities

+ 12,722

recorded in the last 24 hours

34,273,368 total vaccine doses administered in primary care settings

1,264,850 total vaccine doses administered in aged care and disability settings

NSW	Jurisdictions	Commonwealth
Cumulative	5,042,462	12,426,743
Daily increase	3,296	3,208

VIC	Jurisdictions	Commonwealth
Cumulative	5,972,399	8,857,930
Daily increase	4,774	3,616

QLD	Jurisdictions	Commonwealth
Cumulative	3,793,102	6,857,357
Daily increase	2,325	2,749

WA	Jurisdictions	Commonwealth
Cumulative	2,434,445	3,703,771
Daily increase	1,750	1,949

TAS	Jurisdictions	Commonwealth
Cumulative	608,326	653,299
Daily increase	2,046	129

SA	Jurisdictions	Commonwealth
Cumulative	1,762,106	2,108,947
Daily increase	2,336	617

ACT	Jurisdictions	Commonwealth
Cumulative	746,663	703,396
Daily increase	846	444

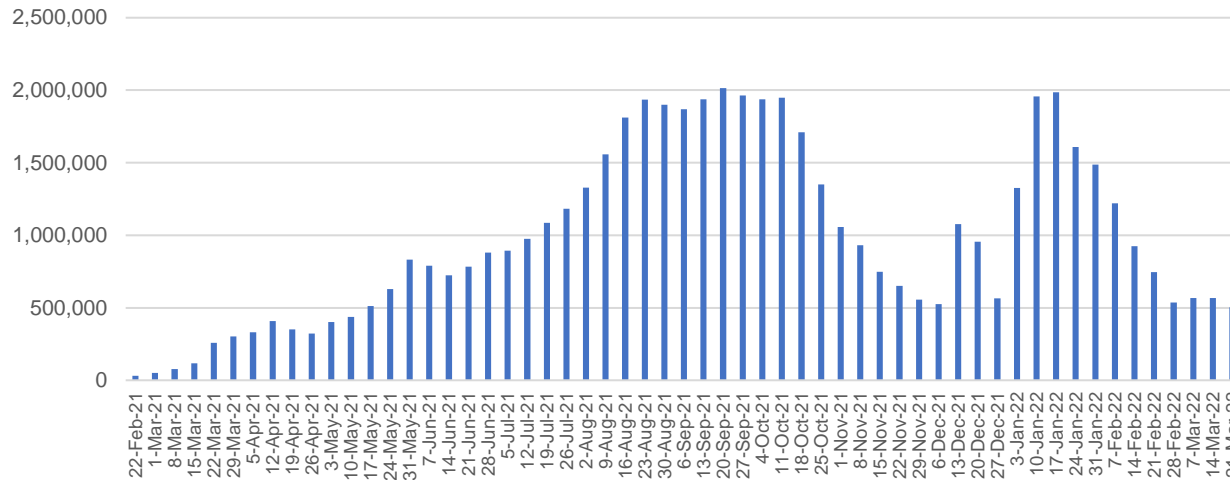
NT	Jurisdictions	Commonwealth
Cumulative	322,432	226,775
Daily increase	322	10

Vaccine milestone charts

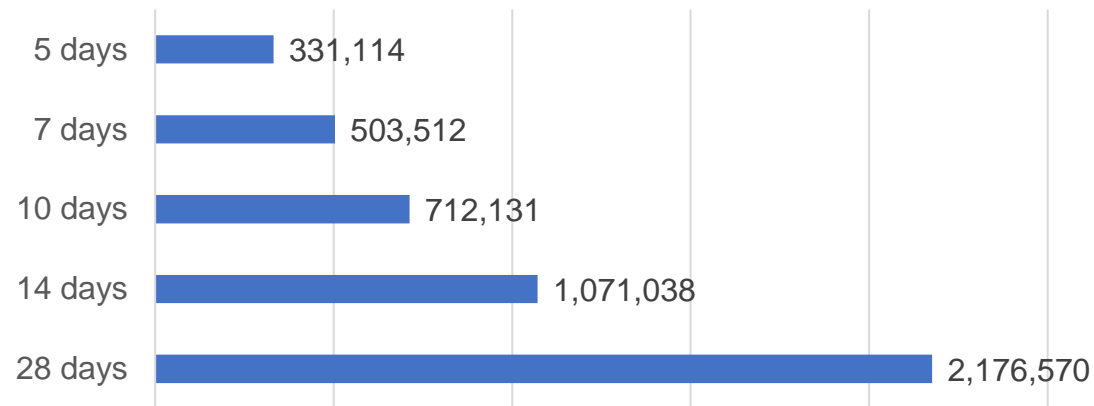
Data as at:
27 Mar 2022

Australia's COVID-19
Vaccine Roadmap

Doses Administered by Week

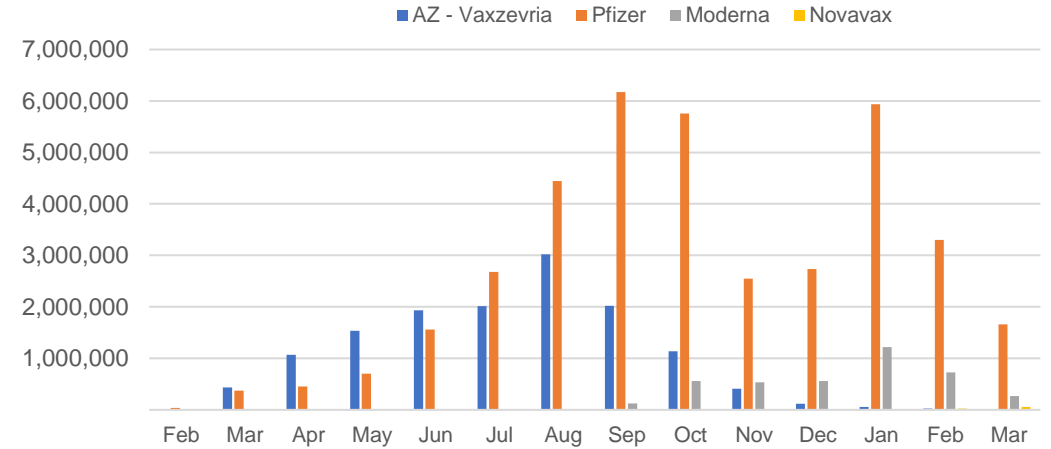


Doses Reported

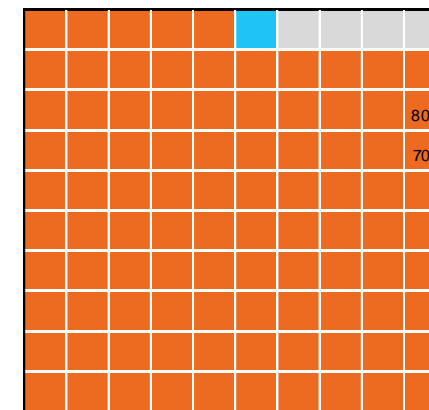


*Sourced from the Australian Immunisation Register.

Doses by administration month and vaccine type



Eligible population percentage coverage



1st dose: > 95.0% 2nd dose: > 95.0%

*Each square represents 1% of the national population. Squares are filled as milestones are achieved.

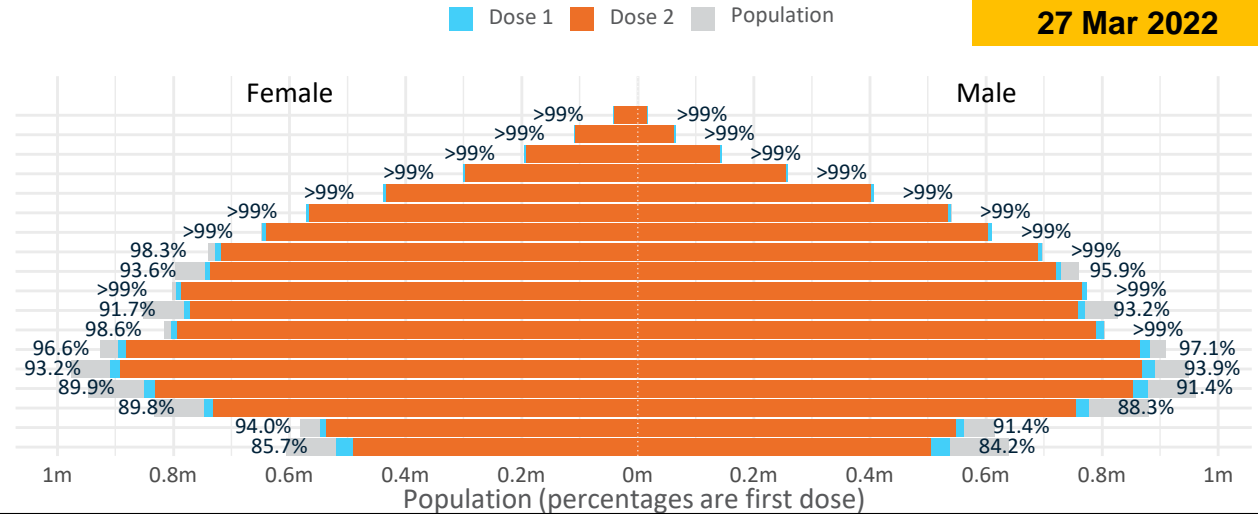
Doses by age and sex

First and second doses by age and sex

	16+	50+	12-15	5-11
Dose 1	96.75% (19,950,701 doses / 20,619,959 people)	>99% (8,818,919 doses / 8,749,703 people)	84.92% (1,056,414 doses / 1,243,990 people)	52.11% (1,186,361 doses / 2,276,638 people)
Dose 2	95.06% (19,601,978 doses / 20,619,959 people)	>99% (8,707,642 doses / 8,749,703 people)	79.93% (994,350 doses / 1,243,990 people)	24.47% (557,044 doses / 2,276,638 people)

Data as at:
27 Mar 2022

Age	Dose 1	Dose 2
95+	60,174 (>99%)	56,764 (>99%)
90-94	174,650 (>99%)	168,826 (>99%)
85-89	340,165 (>99%)	332,887 (>99%)
80-84	559,054 (>99%)	551,380 (>99%)
75-79	844,657 (>99%)	835,908 (>99%)
70-74	1,111,577 (>99%)	1,100,249 (>99%)
65-69	1,258,558 (>99%)	1,243,914 (98.9%)
60-64	1,424,953 (>99%)	1,408,105 (98.0%)
55-59	1,474,850 (94.8%)	1,457,502 (93.7%)
50-54	1,570,281 (>99%)	1,552,107 (>99%)
45-49	1,551,716 (92.5%)	1,531,572 (91.3%)
40-44	1,609,846 (>99%)	1,584,053 (97.8%)
35-39	1,782,217 (97.1%)	1,748,468 (95.3%)
30-34	1,808,411 (94.0%)	1,765,099 (91.8%)
25-29	1,739,351 (91.2%)	1,690,831 (88.7%)
20-24	1,530,862 (89.4%)	1,490,610 (87.1%)
16-19	1,109,379 (92.8%)	1,083,703 (90.6%)
12-15	1,056,414 (84.9%)	994,350 (79.9%)



	AUS	ACT	NSW	NT	QLD	SA	TAS	VIC	WA
16 and over - dose 1	19,950,701	351,523	6,303,231	174,339	3,841,584	1,369,702	443,345	5,142,772	2,083,791
16 and over - dose 2	19,601,978	346,104	6,208,146	169,485	3,770,778	1,337,869	433,702	5,066,441	2,045,660
16 and over - population	20,619,959*	344,037	6,565,651	190,571	4,112,707	1,440,400	440,172	5,407,574	2,114,978
16 and over % with dose 1	96.75%	>99%	96.00%	91.48%	93.41%	95.09%	>99%	95.10%	98.53%
16 and over % with dose 2	95.06%	>99%	94.55%	88.94%	91.69%	92.88%	98.53%	93.69%	96.72%
5 to 11 - dose 1	1,186,361	31,727	353,048	13,078	207,636	83,759	28,393	323,625	137,732
5 to 11 - dose 2	557,044	19,299	172,793	5,293	98,362	40,437	16,659	148,936	52,830
5 to 11 - population	2,276,638	39,789	716,460	24,750	478,731	148,816	45,033	578,499	244,154
5 to 11 % with dose 1	52.11%	79.74%	49.28%	52.84%	43.37%	56.28%	63.05%	55.94%	56.41%
5 to 11 % with dose 2	24.47%	48.50%	24.12%	21.39%	20.55%	27.17%	36.99%	25.75%	21.64%
12 to 15 - dose 1	1,056,414	20,077	325,685	10,909	207,563	68,511	22,916	276,148	115,412
12 to 15 - dose 2	994,350	19,368	309,916	9,760	193,360	64,465	21,690	262,857	104,972
12 to 15 - population	1,243,990	19,693	390,330	13,060	270,146	82,747	26,308	308,611	132,869
12 to 15 % with dose 1	84.92%	>99%	83.44%	83.53%	76.83%	82.80%	87.11%	89.48%	86.86%
12 to 15 % with dose 2	79.93%	98.35%	79.40%	74.73%	71.58%	77.91%	82.45%	85.17%	79.00%

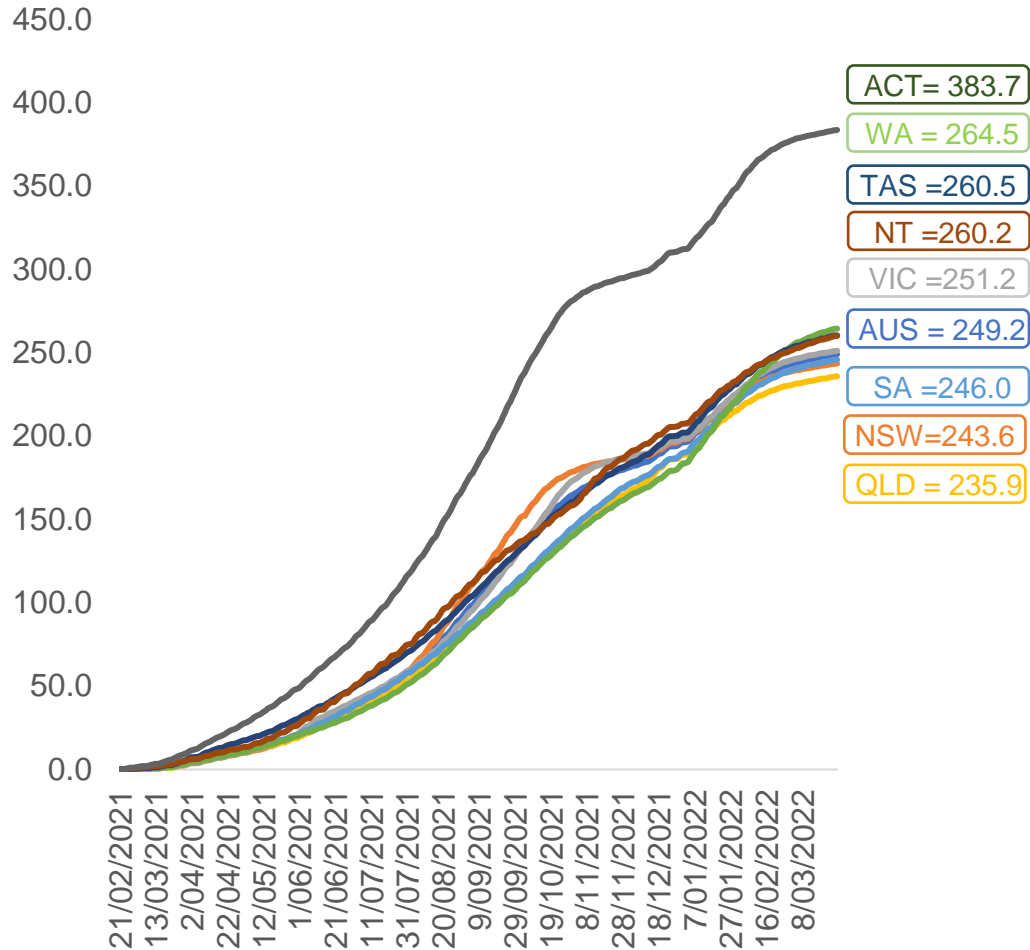
*National population will not equal sum of listed jurisdictions due to a small number of people counted in national population residing in some 'other' territories. Sum of state doses will not add to national total as some records are unable to be geocoded to a State or Territory. Doses sourced from Australian Immunisation Register, population from ABS ERP June 2020

Vaccinations by location

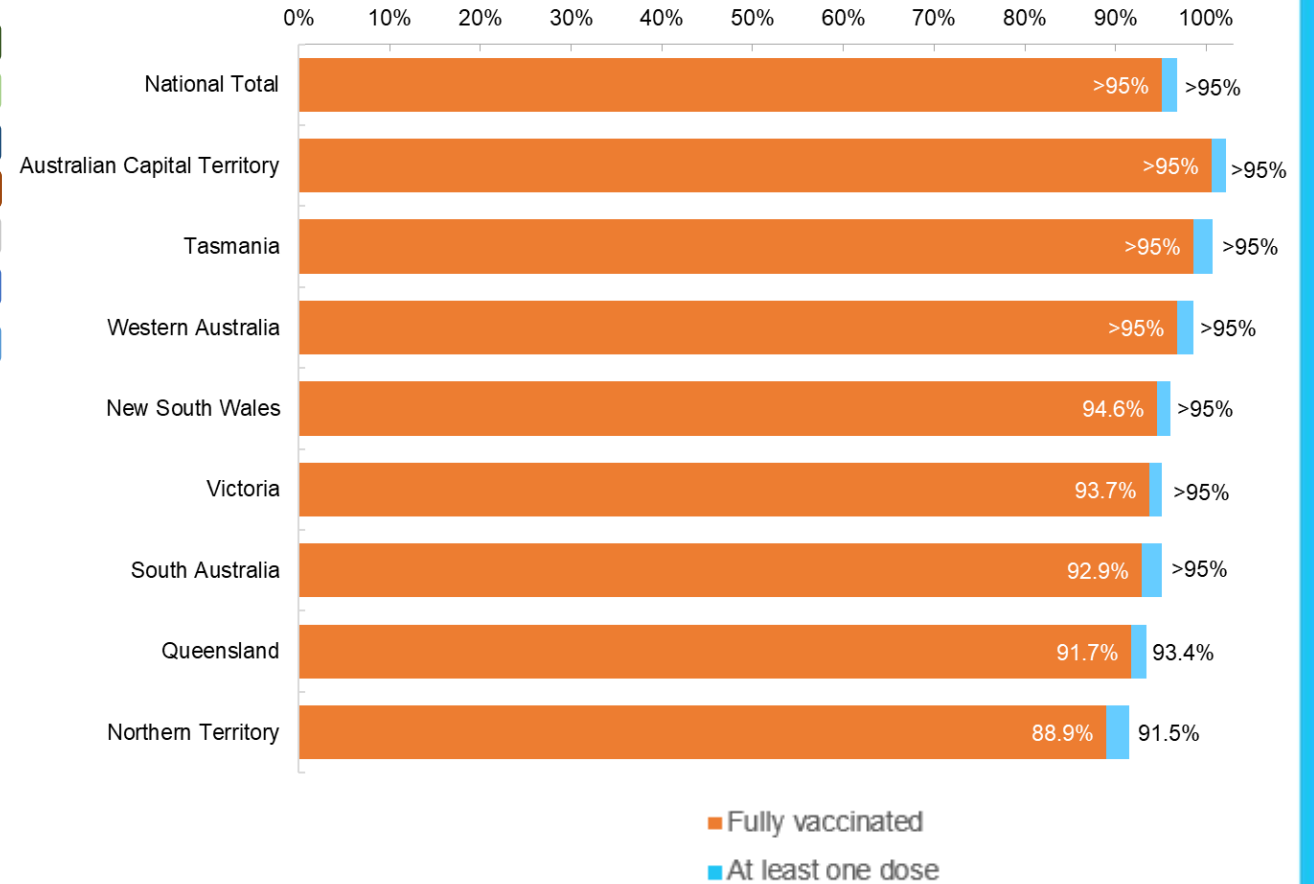
Data as at:
27 Mar 2022

Australia's COVID-19
Vaccine Roadmap

Cumulative total doses administered vs eligible state populations*



First and Second Doses by residential location



*Not an indication of percentage vaccinated, numbers will exceed 100 due to multiple doses required per person of the population. All doses are included for those aged 12 and above, and are based on vaccination provider location.

Aboriginal and Torres Strait Islander peoples

Number of people vaccinated

Data as at:
22 Mar 2022
Updated weekly

Australia's COVID-19
Vaccine Roadmap



435,465

people over the age of 16
have had at least one dose

84.0%

of people over the age of 16
have had at least one dose



413,329

people over the age of 16
are fully vaccinated

79.7%

of people over the age of 16 are
fully vaccinated



People aged 12 – 15 years

48,488

42,163

68.3%

59.4%

At least one dose

Fully vaccinated

178 Aboriginal community controlled health services (ACCHS)

0#	50	27	44	12	3	21	21
ACT	NSW	NT	QLD	SA	TAS	VIC	WA

Medicare Address State ^{##}	Individuals Dose 1	Individuals Dose 1 %	Individuals Dose 2	Individuals Dose 2 %
Australian Capital Territory	4,826	91.2%	4,705	88.9%
New South Wales	134,554	86.6%	131,266	84.5%
Northern Territory	42,190	89.2%	39,740	84.0%
Queensland	114,999	81.0%	108,745	76.6%
South Australia	19,741	79.4%	18,169	73.1%
Tasmania	13,896	88.4%	13,429	85.4%
Victoria	35,245	89.6%	34,372	87.4%
Western Australia	53,111	84.8%	47,861	76.4%
Unknown/Other Territories	16,903	65.2%	15,042	58.0%
Totals	435,465	84.0%	413,329	79.7%

Source: Australian Immunisation Register

*Identifying as Aboriginal and Torres Strait Islander is optional and the estimated population may be under reported.

**Includes all Aboriginal and Torres Strait Islander peoples who have received a vaccination, not limited to those administered in an ACCHS setting

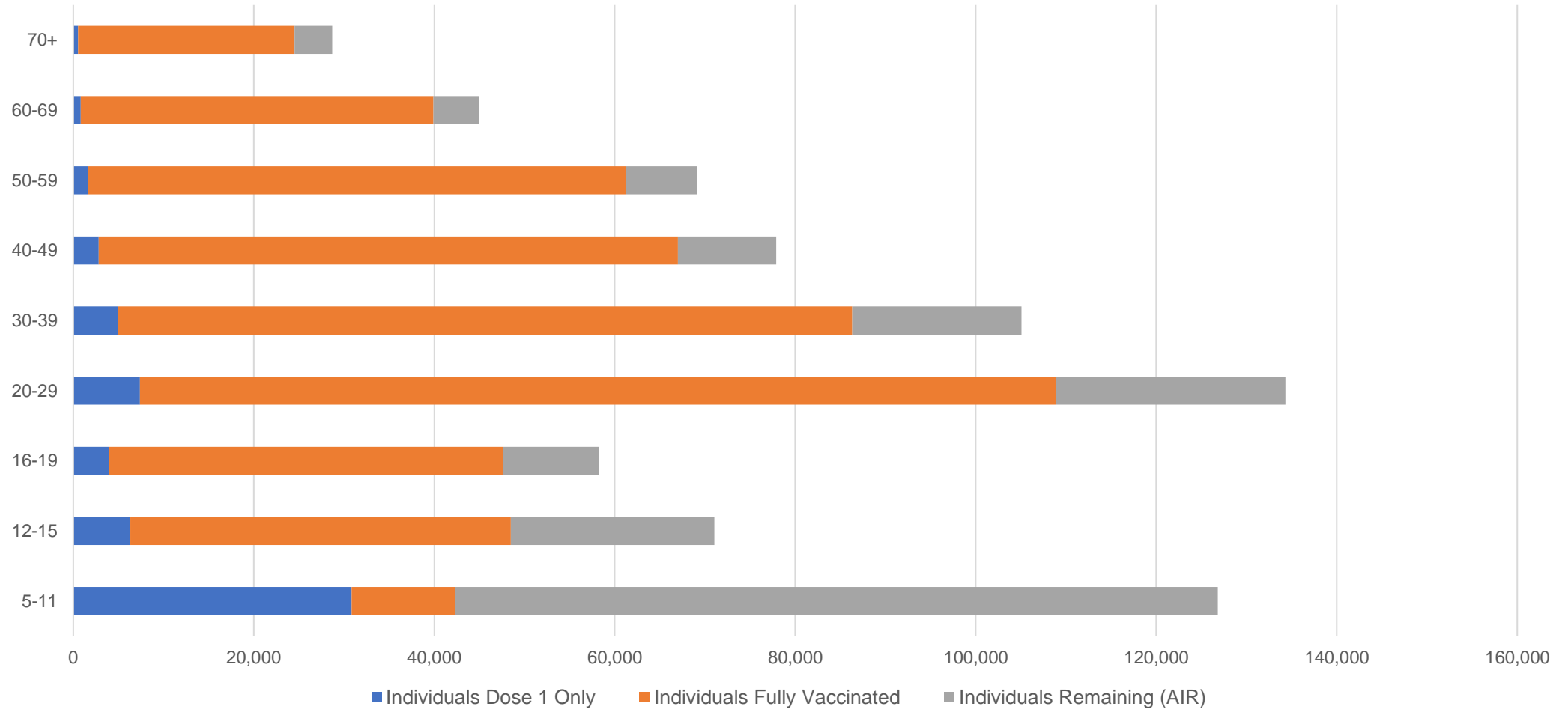
#ACCHS in the ACT are currently operating as a Commonwealth Vaccine Clinics so not included to avoid double counting

##The above table includes all identified Aboriginal and Torres Strait Islander people who are aged 16 and above by their state of residence.

Aboriginal and Torres Strait Islander peoples Number of people vaccinated by age

Data as at:
22 Mar 2022
Updated weekly

Australia's COVID-19
Vaccine Roadmap



Source: Australian Immunisation Register

Commonwealth primary care

Data as at:
27 Mar 2022

Australia's COVID-19
Vaccine Roadmap



Primary care vaccine administration sites

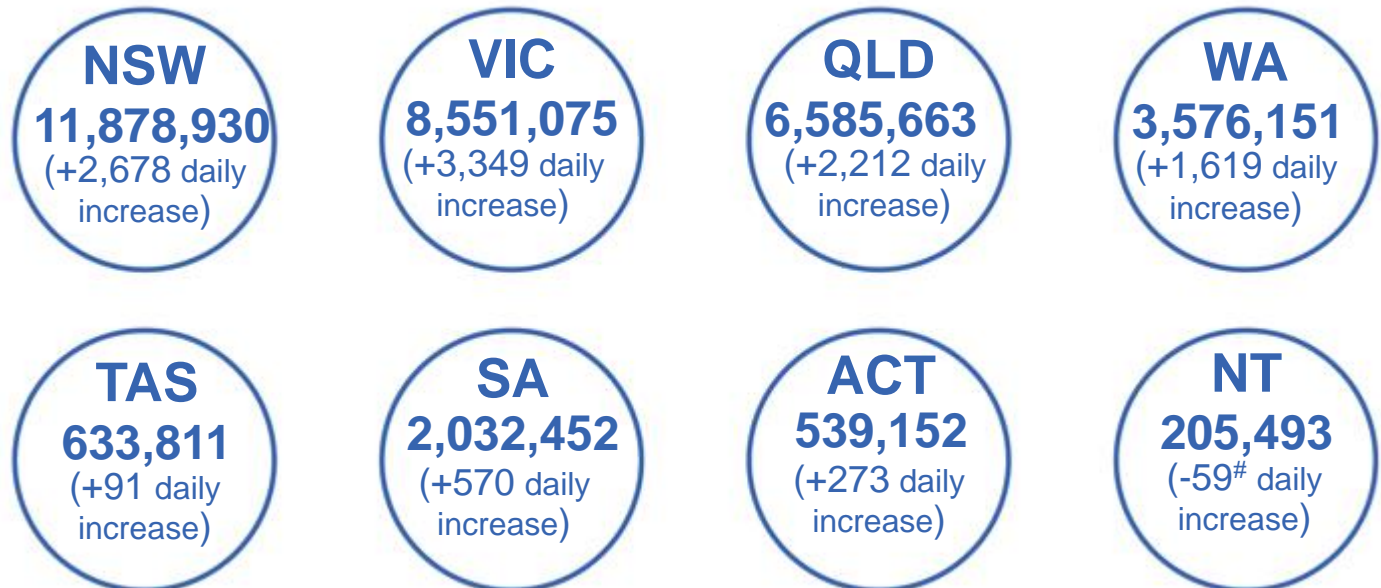
5,795	128	178	3,589
GPs	CVCs	ACCHS	Pharmacies



34,273,368 total vaccine doses administered
primary care settings as at 27 March
+ 12,241 recorded in the last 24 hours

Primary care vaccinations by provider type

	Doses administered	Daily increase	7 day increase
General Practice* includes other Commonwealth	27,751,162	8,028	238,506
Pharmacy	6,522,206	4,213	123,463



270,641

doses administered to persons
residing in other territories or with
missing residential information

*General practice includes Commonwealth Vaccination Clinics, Aboriginal Community Health Centres, Royal Flying Doctor Service and other Commonwealth vaccination facilities
Numbers are calculated as difference in daily cumulative reported numbers to allow for historical corrections in all data sources. This can occasionally result in negative numbers, such as for NT, where historical details about doses have been updated.

Source: Australian Immunisation Register

Data as at:
27 Mar 2022

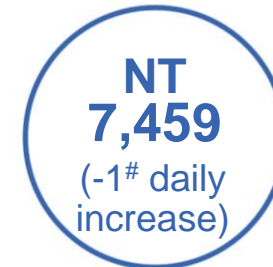
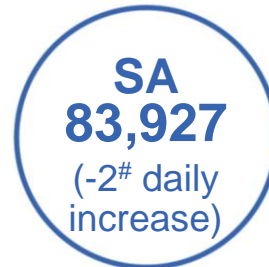
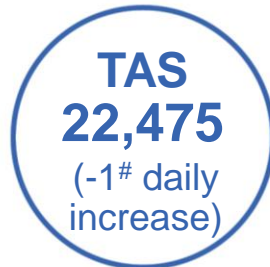
Commonwealth aged care and disability doses administered



1,264,850 (+ 481 last 24 hours)

Total vaccine doses administered in aged care and disability facilities as at 27 March

Number of doses administered as part of the Commonwealth aged and disability care rollout



34,537 doses administered to persons residing in other territories or with missing residential information

Source: Australian Immunisation Register

*Sourced from the Australian Immunisation Register. Includes all persons vaccinated at participating residential aged care, disability and related industry settings.

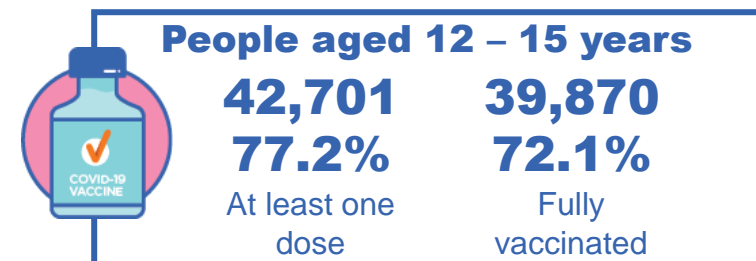
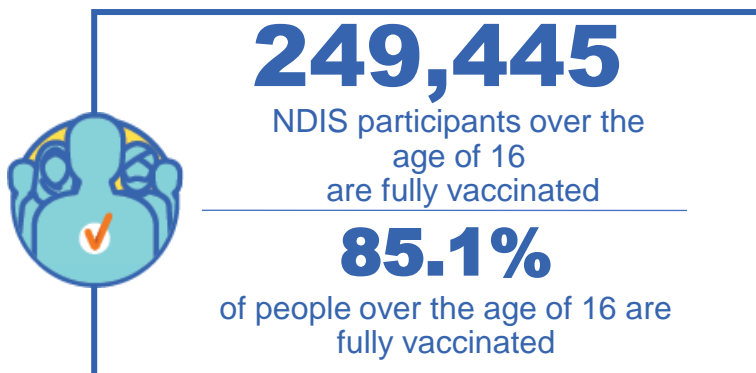
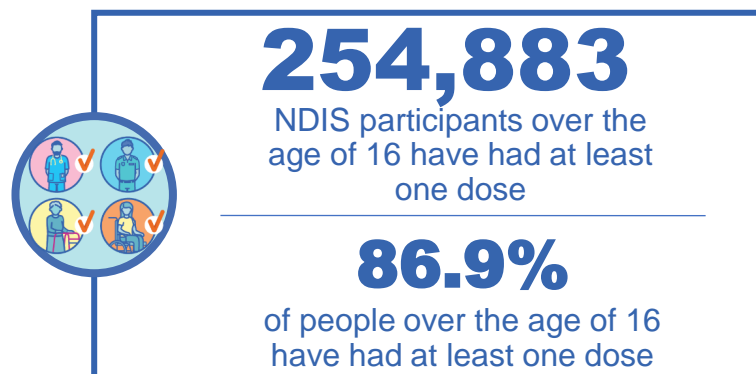
**State level breakdown indicates the residential location and may not align to the state in which the vaccination occurred.

Numbers are calculated as difference in daily cumulative reported numbers to allow for historical corrections in all data sources. This can occasionally result in negative numbers, such as for VIC, TAS, SA and NT, where historical details about doses have been updated.

National Disability Insurance Scheme (NDIS) reported vaccinations

Data as at:
24 March 2022
Updated weekly

Australia's COVID-19
Vaccine Roadmap



NDIS participant vaccinations

	People aged 16+ with at least one dose	People aged 16+ fully vaccinated	% People aged 16+ with at least one dose	% People aged 16+ fully vaccinated
ACT	4,830	4,761	89.1%	87.8%
NSW	78,482	77,152	87.5%	86.0%
NT	2,204	2,119	77.3%	74.3%
QLD	50,153	49,017	85.3%	83.3%
SA	20,759	20,168	84.6%	82.2%
TAS	6,396	6,215	87.0%	84.5%
VIC	67,848	66,576	88.1%	86.5%
WA	24,211	23,437	87.9%	85.1%
National	254,883	249,445	86.9%	85.1%

Source: Linkage between National Disability Insurance Agency data and the Australian Immunisation Register. Total NDIS participant numbers as at 28th February. Australian Immunisation Register data as at 23 March. Includes all participants regardless of residence type.

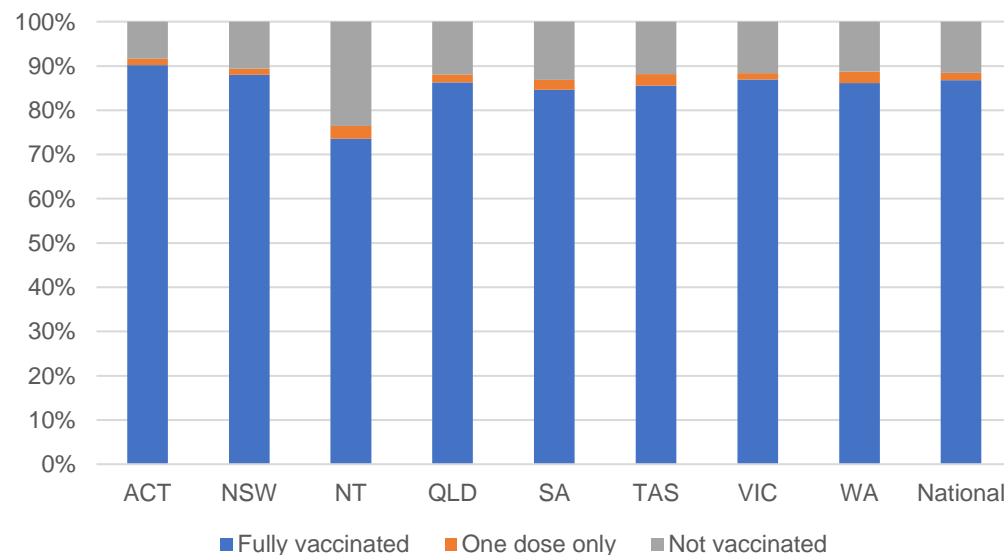
National Disability Insurance Scheme (NDIS) reported vaccinations

Data as at:
24 March 2022
Updated Weekly

Australia's COVID-19
Vaccine Roadmap

NATIONAL	Total people with at least one dose	People fully vaccinated	Total number of individuals in cohort	% People with at least one dose	% People fully vaccinated
NDIS participants living in disability accommodation	20,659	20,275	23,352	88.5%	86.8%

NDIS participants in disability and aged care accommodation



Source: Linkage between National Disability Insurance Agency data and the Australian Immunisation Register. Includes participants residing in disability accommodation only.
Source: Total NDIS participant numbers as at 28th February. Participant data as at 23 March. Australian Immunisation Register data as at 23 March. Worker data as at 24 March.

NDIS workforce vaccinations

	NDIS workers with at least one dose	NDIS workers fully vaccinated	% NDIS workers with at least one dose	% NDIS workers fully vaccinated
NSW	120,488	116,832	98.1%	95.1%
VIC	116,141	110,028	98.2%	93.1%
QLD	69,327	68,478	97.4%	96.3%
WA	32,724	30,401	98.5%	91.5%
SA	35,143	31,646	98.2%	88.4%
TAS	10,783	10,500	99.7%	97.1%
ACT	3,547	3,516	99.6%	98.8%
NT	3,403	3,253	97.6%	93.3%
TOTAL	391,556	374,654	98.1%	93.9%

Source: the NDIS Commission has established a requirement for registered NDIS providers who provide intensive disability support services to report on the vaccination status of workers they employ, or otherwise engage, to deliver NDIS-funded supports and services, and who are required to be vaccinated in accordance with in-force state and territory public health orders. The statistics reflect data reported to the NDIS Commission by registered NDIS providers and should be considered indicative and subject to change

Note: Some registered NDIS providers are yet to report on the vaccination status of their workforce. The NDIS Commission is working with those providers around reporting requirements.

Remaining workers not included include those exempt from vaccination requirements, workers whose vaccination status is not yet verified by the provider (such as workers on leave) and provider reporting anomalies.

Residential aged care vaccination rollout

Residential aged care facilities status

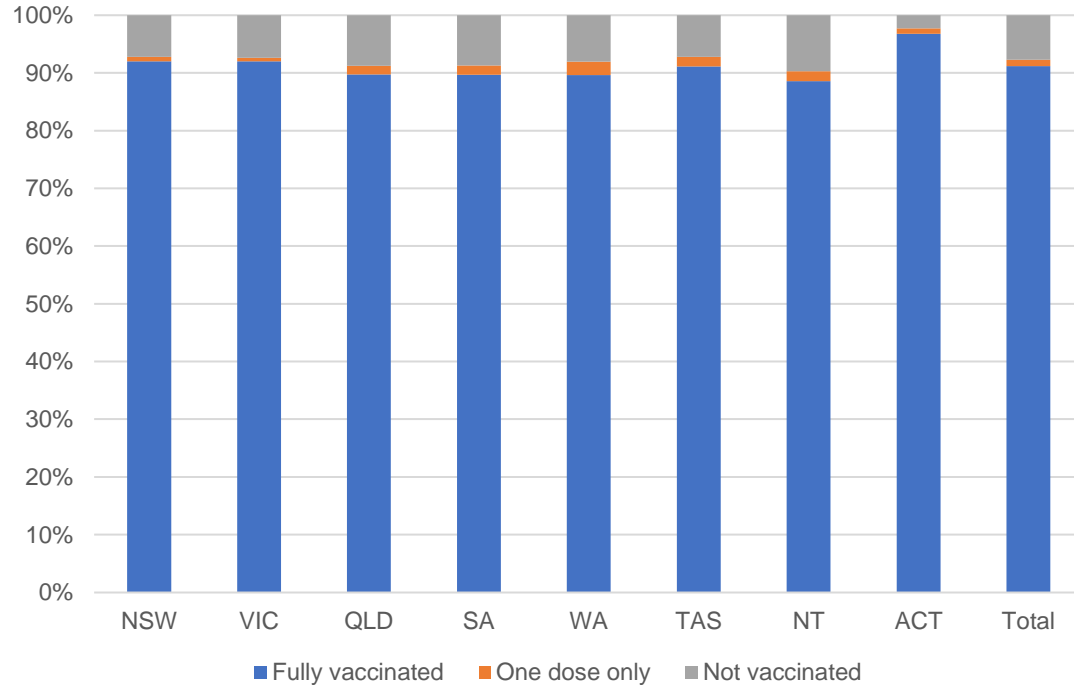
100%
Commonwealth facilities visited (2,537 planned sites)

174,536
People fully vaccinated

176,706
People with at least one dose

Data as at:
24 Mar 2022
Updated weekly

Aged care resident vaccinations



Aged care worker vaccinations

Jurisdictions	Total workers with at least one dose	Workers fully vaccinated	% Workers with at least one dose	% Workers fully vaccinated
NSW	78,130	78,121	98.7%	98.7%
VIC	66,398	66,397	96.9%	96.9%
QLD	48,462	48,455	98.7%	98.7%
SA	26,362	26,342	97.7%	97.6%
WA	23,583	23,580	98.1%	98.1%
TAS	7,676	7,676	100.0%	100.0%
NT	844	844	100.0%	100.0%
ACT	3,038	3,038	99.9%	99.9%
Total	254,493	254,453	98.1%	98.1%

Source: My Aged Care Portal vaccination progress

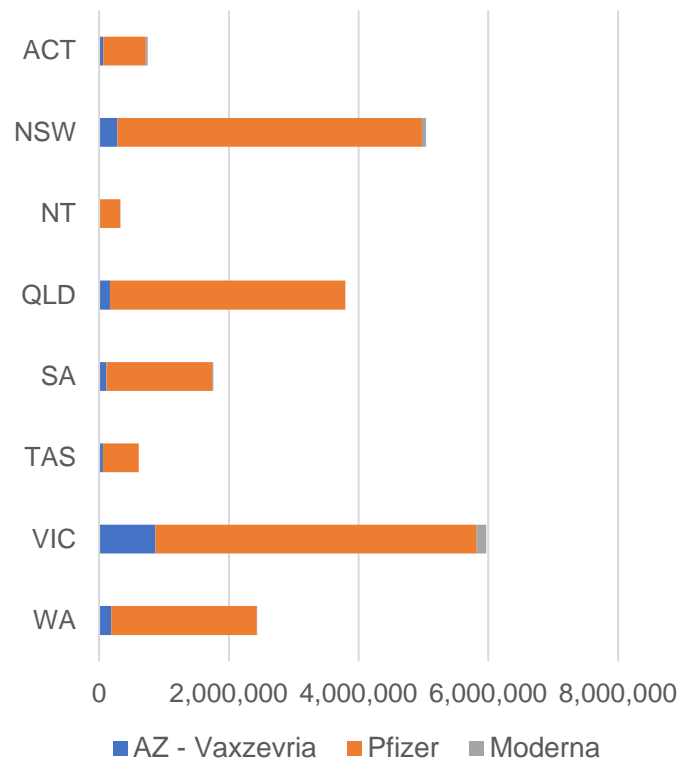
*Status updates are provided by facilities at least once per week. Reporting is updated Monday to Friday to encompass different facility updates being made on different days.

Data is sourced directly from Aged Care Service Providers and is not drawn or closely aligned with data from AIR due to inconsistencies and potential lags in uploading of records.

Data as at:
27 Mar 2022

Jurisdiction administered

Total vaccine doses administered in State and Territory clinics as at 27 March



20,681,935 total vaccine doses administered in State and Territory clinics as at 27 March
 + **17,695** recorded in the last 24 hours
 + **138,603** recorded in the last 7 days

NSW
5,042,462
 (+3,296 daily increase)

VIC
5,972,399
 (+4,774 daily increase)

QLD
3,793,102
 (+2,325 daily increase)

WA
2,434,445
 (+1,750 daily increase)

TAS
608,326
 (+2,046 daily increase)

SA
1,762,106
 (+2,336 daily increase)

ACT
746,663
 (+846 daily increase)

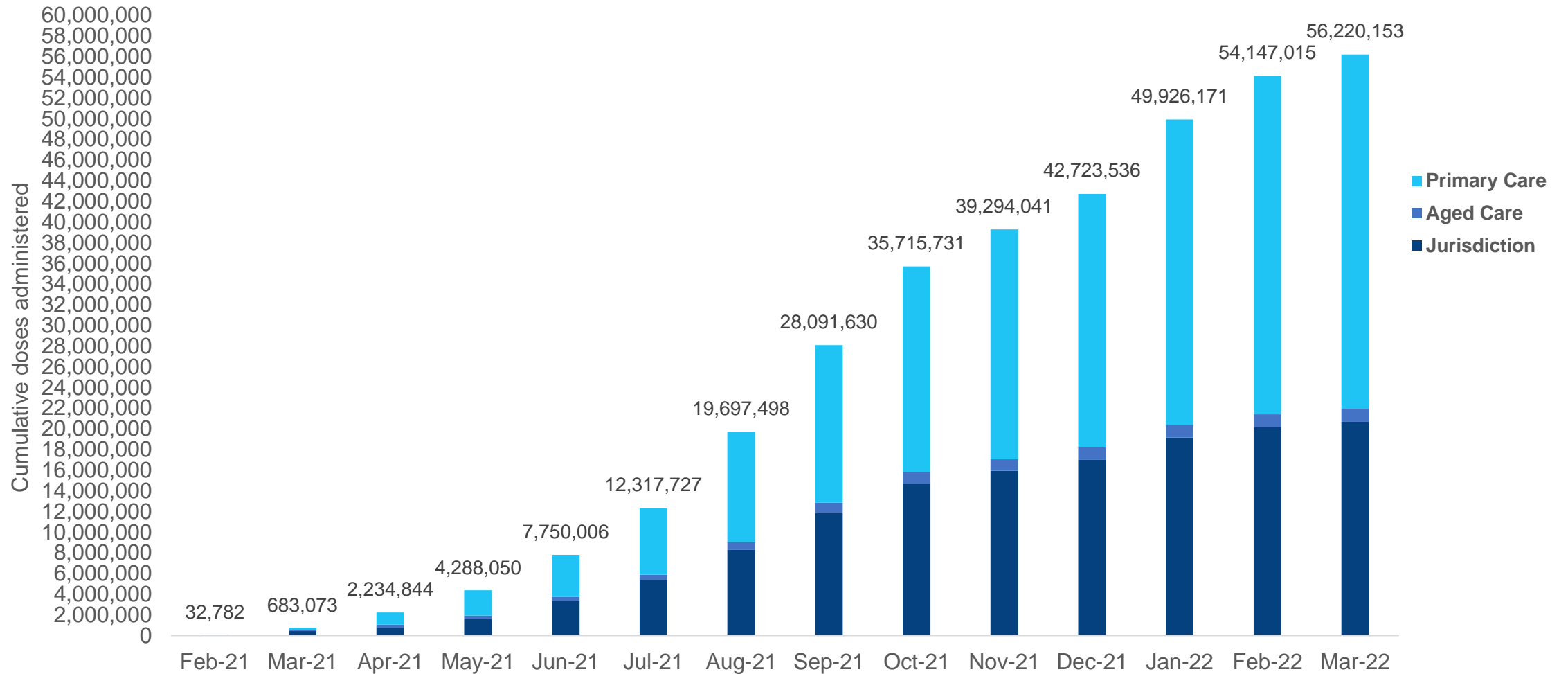
NT
322,432
 (+322 daily increase)

*Sourced from the Australian Immunisation Register. Numbers are calculated as difference in daily cumulative reported numbers to allow for historical corrections.

Source: Australian Immunisation Register

Data as at:
27 Mar 2022

Cumulative doses administered by channel



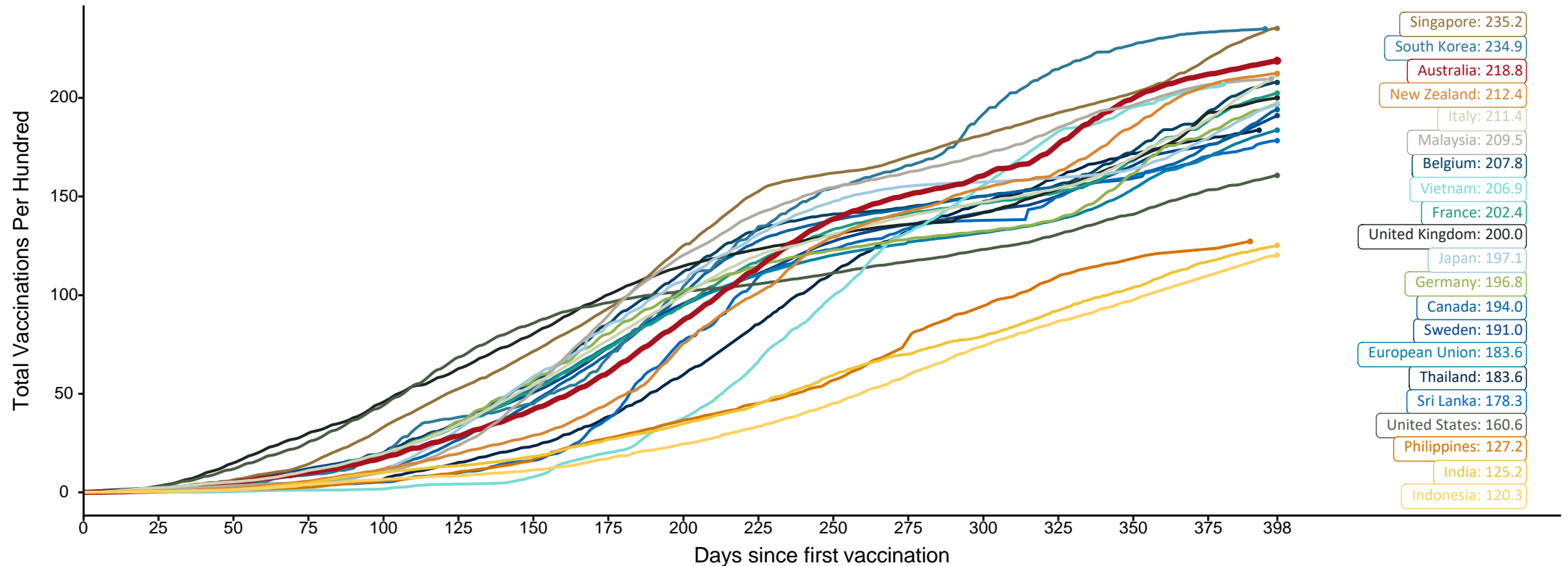
Source: Australian Immunisation Register

Doses at equivalent stages of rollout (Day 398)

Data as at:
27 Mar 2022

The x-axis is truncated at the length of Australia's vaccination program. Countries with intermittent reporting have had their doses per 100 imputed to Australia's current stage of rollout. Israel excluded as it is beyond scale of the graph

Cumulative doses administered (27 Mar): **56,220,153**

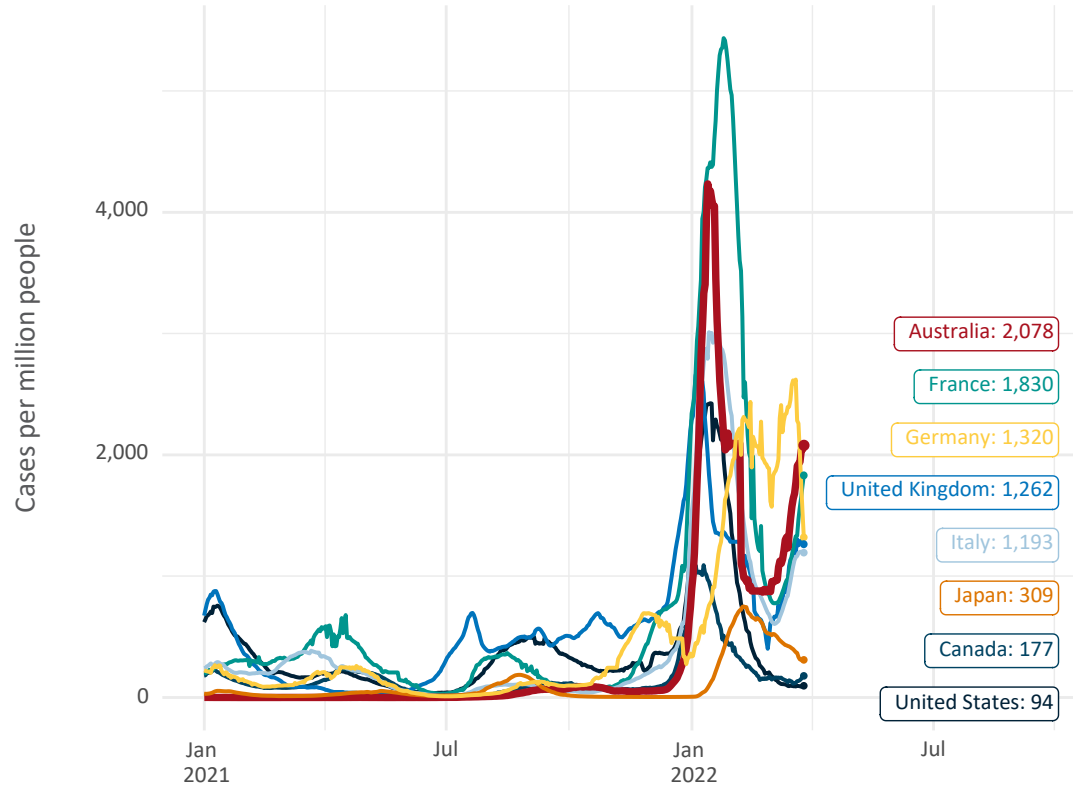


Note: From 11 January 2022, data for Australia includes all doses administered to people 5 and over. Prior to 11 January, data was for 12 and over.
Source: Department of Health (Australia), Our World in Data (international)
Latest data: 27 March

Data as at:
27 Mar 2022

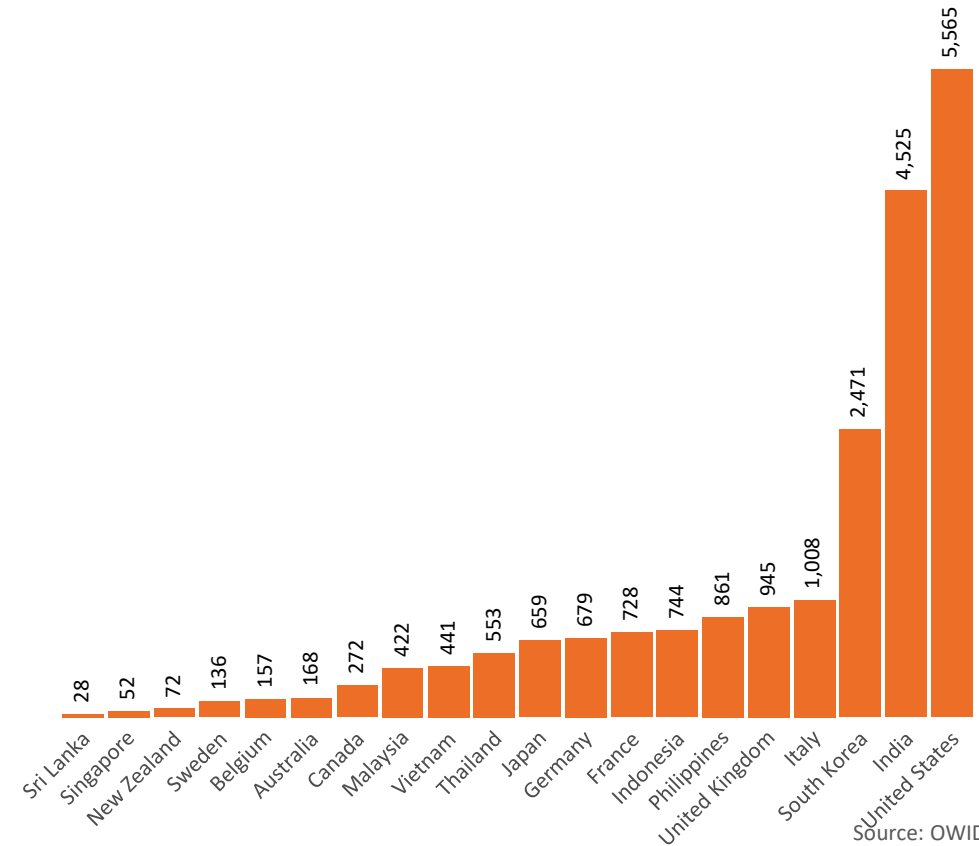
International data – COVID-19

New daily cases per million in 2021, Australia and G7 countries
Smoothed - 7 day average



Source: OWID
Data downloaded: 28 Mar 2022 07:14
Latest data: 26 Mar 2022

COVID-19 deaths in past 7 days - Australia and select countries



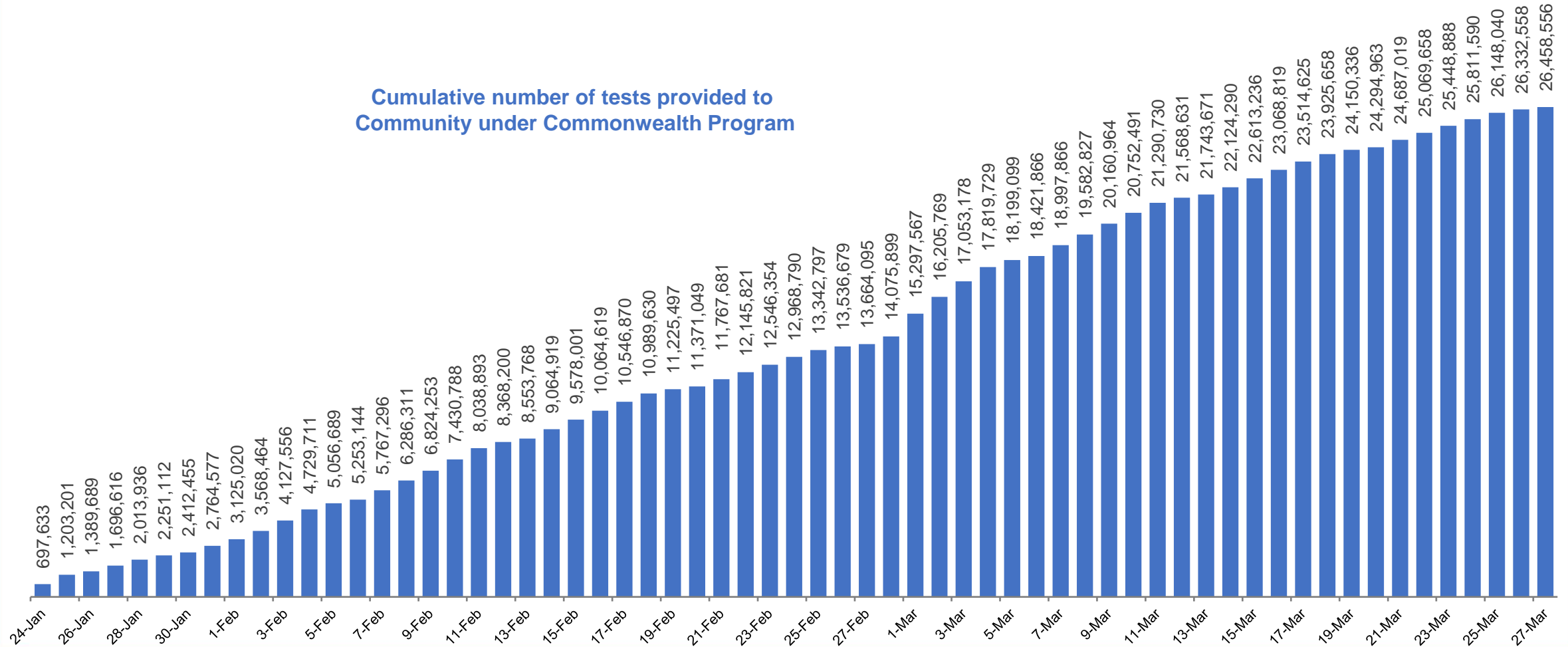
Source: OWID
Data downloaded: 28 Mar 2022 07:14
Latest data: 26 Mar 2022

Data as at:
27 Mar 2022

Concessional rapid antigen test program


5,619 pharmacies have delivered over 26.4 million rapid antigen tests to more than 4.1m eligible concession card holders under the Government's concessional rapid antigen test program.

Cumulative number of tests provided to
Community under Commonwealth Program



Pandemic Response Payments

Data as at midnight: 27 Mar 2022
Updated weekly



2.38 million
People have received at least one COVID Disaster Payment (including ISP200)

\$13.97 billion
Paid Out as at 27 Mar 2022


7.33 million
Claims granted across three different payments



93%
of Claims Received Digitally



COVID Disaster Payment:	5.89 million claims received - 2.19 million individuals paid a total of \$12.59 billion.
\$200 Income Support Payment:	353,000 claims received - 183,000 individuals paid a total of \$268.9 million.
Pandemic Leave Disaster Payment:	1.59 million claims received - 980,000 individuals paid a total of \$1.11 billion.



THREE PAYMENTS AVAILABLE

COVID Disaster Payment
assisting during a lockdown event in a Commonwealth hotspot.

Income Support Payment \$200
for income support recipients who lost at least 8 hours of work.

Pandemic Leave Disaster Payment
for those who have to self-isolate, quarantine or care.

For more information visit:
servicesaustralia.gov.au

COVID-19 DISASTER PAYMENTS

Northern Territory
Lockdown (#3) from 16 Nov to 22 Nov
Claiming period ended 27 Dec

7,500 people have received at least one COVID Disaster Payment.

\$6.9m paid out as at 27 Mar 2022.

Nil paid in initial payments in the week ending 27 Mar 2022.

Cumulative payments made by Territory since activation on 25 Aug 2021.



Date	Cumulative Payments
27 Feb	\$6.9m
6 Mar	\$6.9m
13 Mar	\$6.9m
20 Mar	\$6.9m
27 Mar	\$6.9m

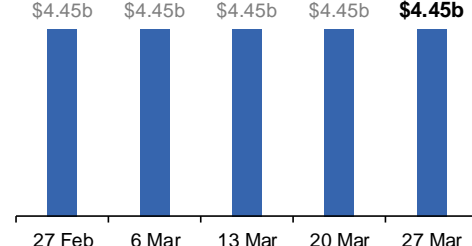
Victoria
Lockdown (#6) from 6 Aug to 28 Oct
Claiming period ended 9 Dec

745,000 people have received at least one COVID Disaster Payment.

\$4.45b paid out as at 27 Mar 2022.

\$4,200 paid in initial and reoccurring payments in the week ending 27 Mar 2022.

Cumulative payments made by State since activation on 8 Jun 2021.



Date	Cumulative Payments
27 Feb	\$4.45b
6 Mar	\$4.45b
13 Mar	\$4.45b
20 Mar	\$4.45b
27 Mar	\$4.45b

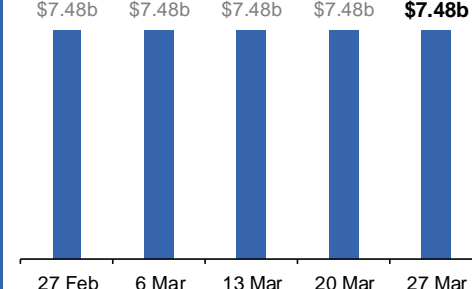
New South Wales
Lockdown from 24 Jun to 10 Oct
Claiming period ended 27 Nov

1.08m people have received at least one COVID Disaster Payment.

\$7.48b paid out as at 27 Mar 2022.

\$1,200 paid in initial and reoccurring payments in the week ending 27 Mar 2022.

Cumulative payments made by State since activation on 1 Jul 2021.



Date	Cumulative Payments
27 Feb	\$7.48b
6 Mar	\$7.48b
13 Mar	\$7.48b
20 Mar	\$7.48b
27 Mar	\$7.48b

Australian Capital Territory
Lockdown from 12 Aug to 14 Oct
Claiming period ended 25 Nov

65,000 people have received at least one COVID Disaster Payment.

\$344.7m paid out as at 27 Mar 2022.

Nil paid in initial and reoccurring payments in the week ending 27 Mar 2022.

Cumulative payments made by Territory since activation on 20 Aug 2021.

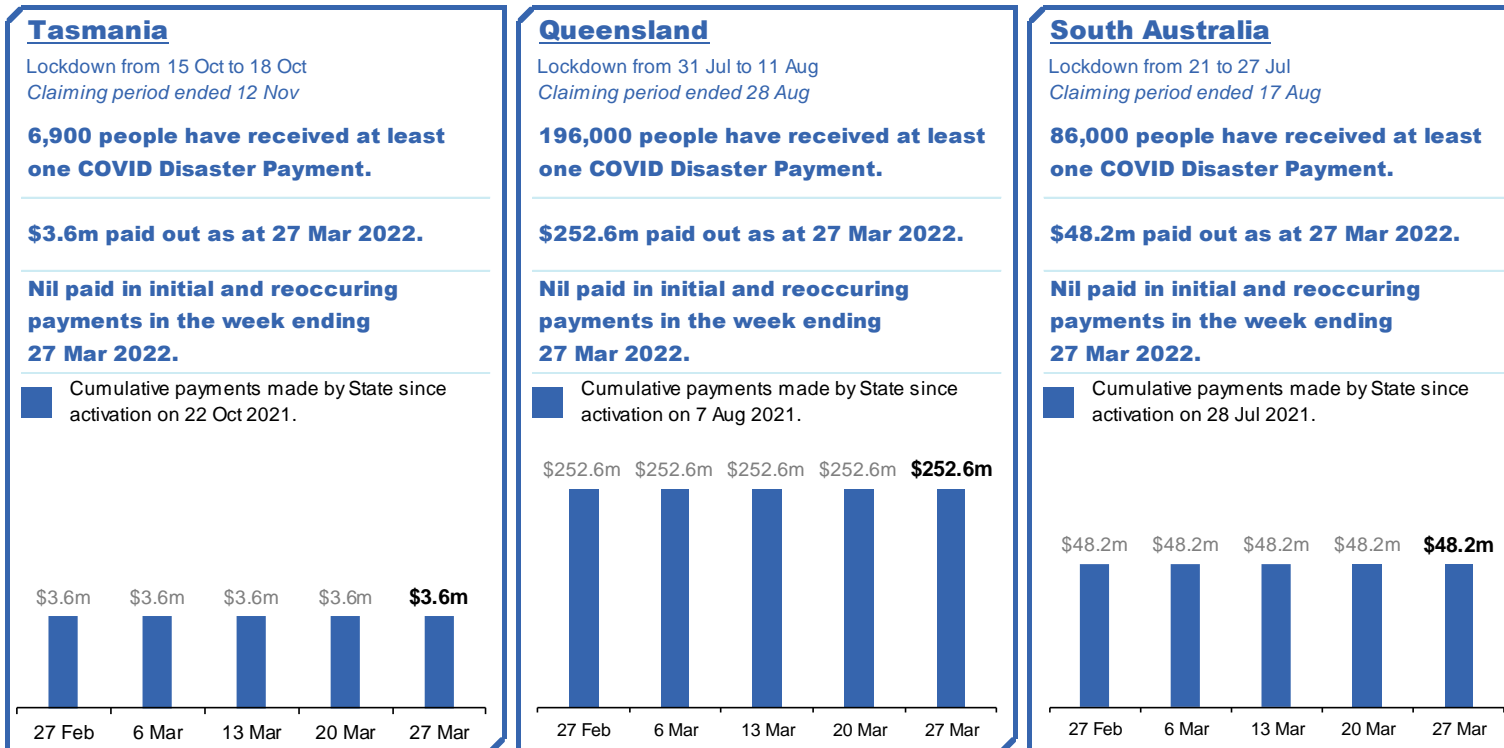


Date	Cumulative Payments
27 Feb	\$344.7m
6 Mar	\$344.7m
13 Mar	\$344.7m
20 Mar	\$344.7m
27 Mar	\$344.7m

Pandemic Response Payments (continued)

Data as at midnight: 27 Mar 2022
Updated weekly

COVID-19 DISASTER PAYMENTS



Administration and Utilisation

Doses as at 27 March 2022

	Ordered	Available	Administered	Stock on Hand at Sites	Estimated Dose Utilisation %
	Up to 27/03/22	Delivered up to 20/03/22 including redistributions	Up to 27/03/22		(see note)
NSW	6,111,372	6,111,372	5,042,462	457,773	93%
VIC	6,990,754	6,986,754	5,972,399	380,197	95%
QLD	4,846,902	4,805,142	3,793,102	531,629	89%
WA	2,646,298	2,641,288	2,434,445	95,989	Fully utilised
SA	2,151,120	2,122,120	1,762,106	147,802	93%
TAS	654,290	652,290	608,326	2,835	Fully utilised
NT	401,354	390,196	322,432	33,400	93%
ACT	651,286	651,286	746,663	12,885	Fully utilised
Jurisdiction delivered total	24,453,376	24,360,448	20,681,935	1,662,509	95%
Commonwealth Vaccination Providers	1,369,816	1,368,102	1,264,850	6,444	Fully utilised
Commonwealth Primary Care & Other	50,795,260	50,254,448	34,273,368	10,965,560	78%
Total	76,618,452	75,982,998	56,220,153	12,634,513	84%

About this data

- Ordered – Total doses delivered to sites. Based on logistics provider data. This figure includes doses allocated for administration in the coming week.
- Available – total doses that could have been administered to date, less doses re-distributed from States & Territories to Primary Care or Commonwealth Vaccination Providers (i.e., does not include those deliveries recently received, and intended for use in the coming week).
- Administered – Doses administered as at 27 March 2022.
- Stock on Hand at Sites – Available doses minus Administered doses and a small % wastage.
- The dose utilisation is calculated based on the total doses administered and a small % wastage in line with international standards in relation to total available doses.
- For Commonwealth Vaccination Providers, the doses available for administration is for the full period (up to 27 March 2022).
- Commonwealth Vaccination Providers utilisation is not provided as the in-reach rollout is demand-based.