



**Australian Government**  
**Operation COVID Shield**

# COVID-19 Vaccine Roll-out

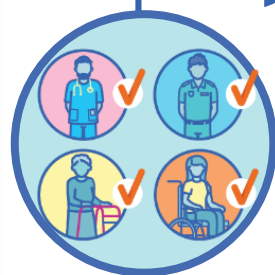
27 March 2022

Data as at:  
26 Mar 2022

# Total vaccine doses



**56,189,736** total vaccine  
doses administered nationally as at 26 March  
**+60,822** recorded in the last 24 hours



**19,949,020**

people have had at least one  
dose

**>95%**

of people over the age of 16  
have had at least one dose



**19,600,378**

people are fully vaccinated

**>95%**

of people over the age of 16 are  
fully vaccinated



**12,749,337**

people over the age of 16  
who have received more  
than two doses

**NSW**  
**17,462,701**  
(+15,678 daily  
increase)

**VIC**  
**14,821,939**  
(+17,586 daily  
increase)

**QLD**  
**10,645,385**  
(+10,231 daily  
increase)

**WA**  
**6,134,517**  
(+8,594 daily  
increase)

**TAS**  
**1,259,450**  
(+864 daily  
increase)

**SA**  
**3,868,100**  
(+5,172 daily  
increase)

**ACT**  
**1,448,769**  
(+2,104 daily  
increase)

**NT**  
**548,875**  
(+593 daily  
increase)

\*Administration state breakdown indicates state in which a vaccine was administered

\*\*Overall dose count includes instances of more than three doses per person in a small number of cases.

Source: Australian Immunisation Register

# Booster Vaccinations

Australia's COVID-19  
Vaccine Roadmap

Data as at:  
26 Mar 2022



**12,749,337** total people who  
have received more than two doses nationally  
**+24,754** recorded in the last 24 hours  
**67.4%** of people who are eligible (18,924,658)  
have received more than two doses



**186,700**  
Indigenous people who have  
received more than two doses  
**51.0%**  
of eligible population (366,094)



**162,367**  
Aged Care Residents who have  
received more than two doses##  
**93.0%**  
of eligible population (174,536)



**171,414** | **20,427**  
NDIS participants | NDIS residents  
who have received more than two doses#  
**71.7%** | **86.6%**  
of eligible population | of eligible population  
(239,000) | (23,000)

\*People may belong to multiple groups and could be represented in the above breakdowns multiple times.

# NDIS participants data as at 24 March 2022.

## Aged Care Residents data as at 25 March 2022.

NSW	People	% of Eligible
Cumulative	3,905,914	63.4%
Daily increase	6,302	

VIC	People	% of Eligible
Cumulative	3,453,465	68.8%
Daily increase	6,308	

QLD	People	% of Eligible
Cumulative	2,201,907	61.7%
Daily increase	4,416	

WA	People	% of Eligible
Cumulative	1,535,360	86.0%
Daily increase	3,602	

SA	People	% of Eligible
Cumulative	902,231	71.0%
Daily increase	2,114	

TAS	People	% of Eligible
Cumulative	288,539	70.3%
Daily increase	589	

ACT	People	% of Eligible
Cumulative	256,409	74.6%
Daily increase	510	

NT	People	% of Eligible
Cumulative	108,042	67.4%
Daily increase	274	

**97,470**

doses administered to persons  
residing in other territories or with  
missing residential information

Source: Australian Immunisation Register

# Vaccinations by residential location

Australia's COVID-19  
Vaccine Roadmap

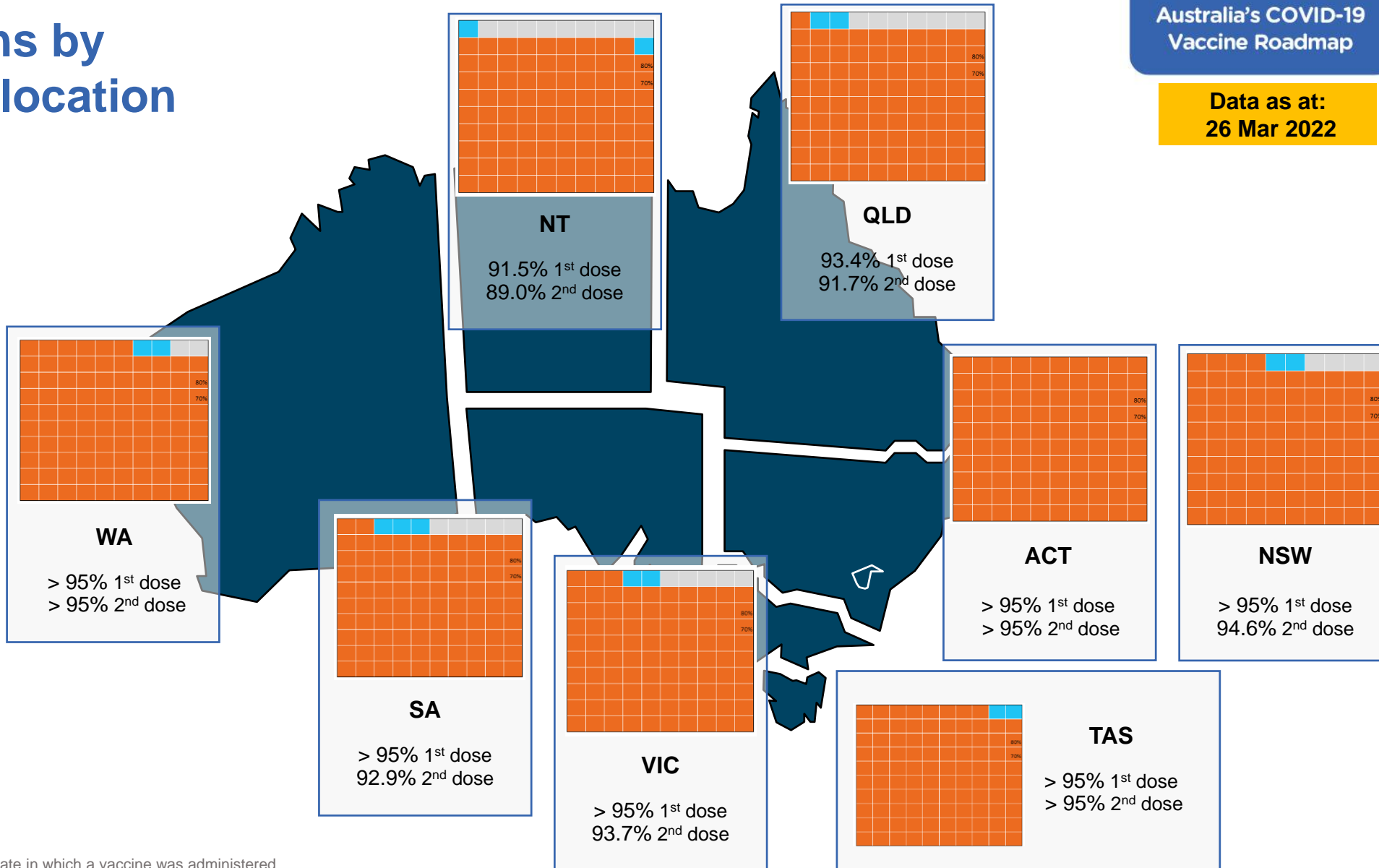
Data as at:  
26 Mar 2022

## First doses

Age	Today	4 weeks ago	8 weeks ago
16+	>95%	>95%	>95%
50+	>95%	>95%	>95%
70+	>95%	>95%	>95%

## Fully vaccinated

Age	Today	4 weeks ago	8 weeks ago
16+	>95%	94.6%	93.7%
50+	>95%	>95%	>95%
70+	>95%	>95%	>95%



\*Residential state may differ from the state in which a vaccine was administered

# Commonwealth and Jurisdiction vaccine doses administered

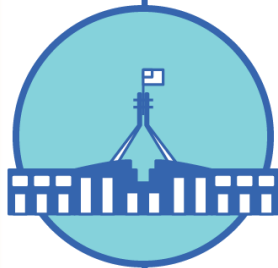
Data as at:  
26 Mar 2022



**56,189,736** total vaccine  
doses administered nationally as at 26 March  
**+ 60,822** recorded in the last 24 hours



**20,664,240**  
doses administered by state  
and territory facilities  
**+ 27,354**  
recorded in the last 24 hours



**35,525,496**  
doses administered by  
commonwealth facilities  
**+ 33,468**  
recorded in the last 24 hours

**34,261,127** total vaccine doses  
administered in primary care settings  
**1,264,369** total vaccine doses  
administered in aged care and disability  
settings

NSW	Jurisdictions	Commonwealth
Cumulative	5,039,166	12,423,535
Daily increase	5,553	10,125

VIC	Jurisdictions	Commonwealth
Cumulative	5,967,625	8,854,314
Daily increase	8,142	9,444

QLD	Jurisdictions	Commonwealth
Cumulative	3,790,777	6,854,608
Daily increase	5,061	5,170

WA	Jurisdictions	Commonwealth
Cumulative	2,432,695	3,701,822
Daily increase	3,115	5,479

TAS	Jurisdictions	Commonwealth
Cumulative	606,280	653,170
Daily increase	424	440

SA	Jurisdictions	Commonwealth
Cumulative	1,759,770	2,108,330
Daily increase	3,281	1,891

ACT	Jurisdictions	Commonwealth
Cumulative	745,817	702,952
Daily increase	1,273	831

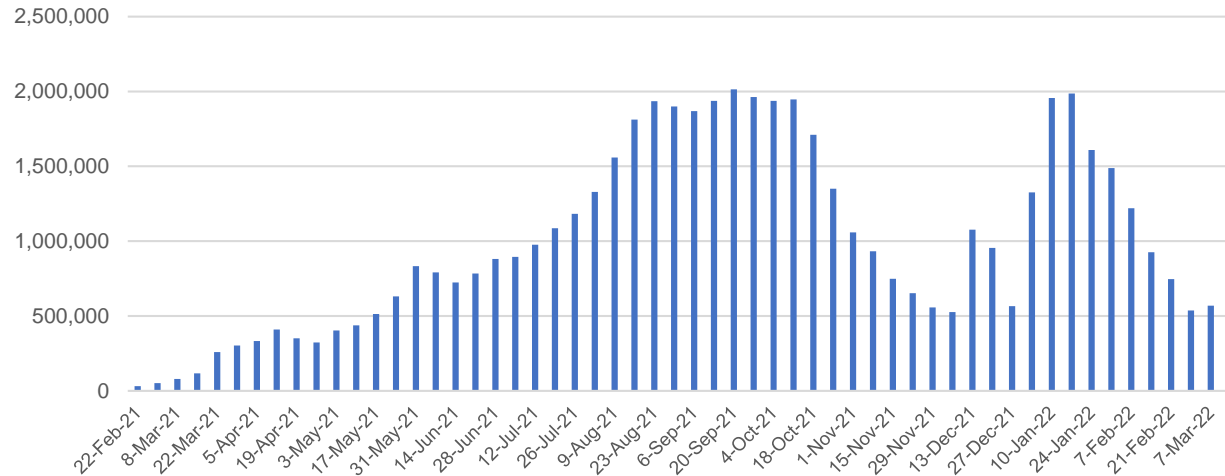
NT	Jurisdictions	Commonwealth
Cumulative	322,110	226,765
Daily increase	505	88

# Vaccine milestone charts

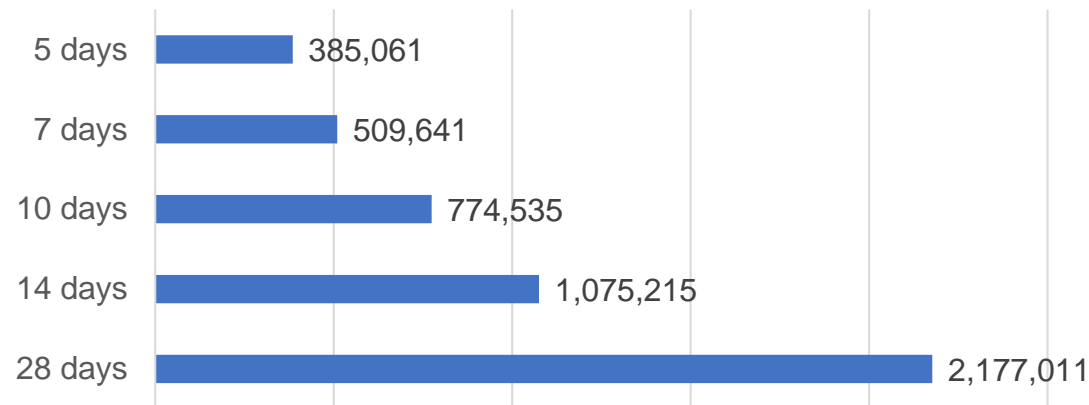
Data as at:  
26 Mar 2022

Australia's COVID-19  
Vaccine Roadmap

Doses Administered by Week

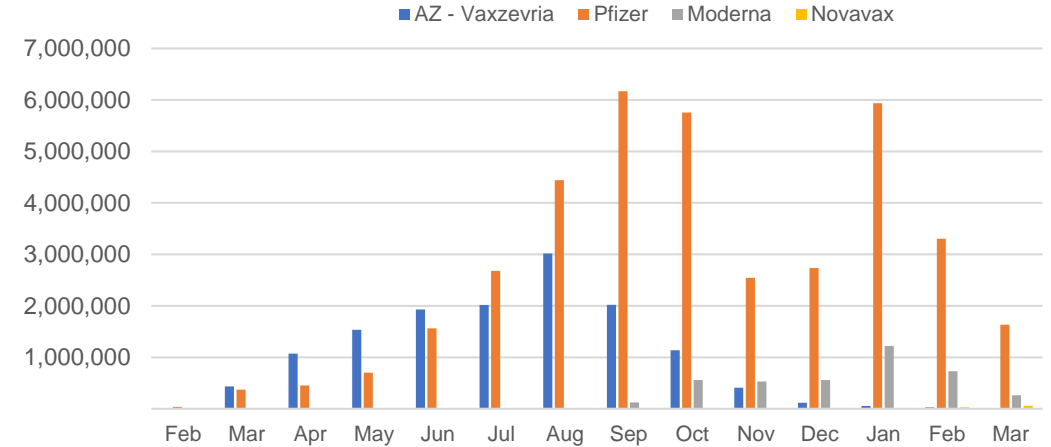


Doses Reported

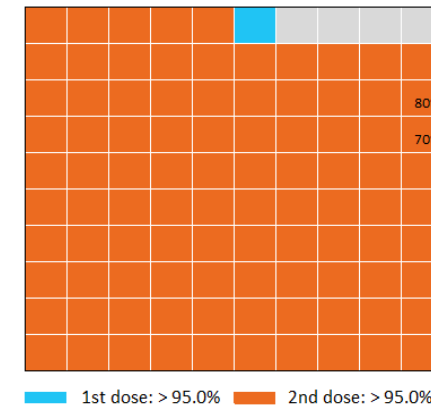


\*Sourced from the Australian Immunisation Register.

Doses by administration month and vaccine type



Eligible population percentage coverage



\*Each square represents 1% of the national population.  
Squares are filled as milestones are achieved.

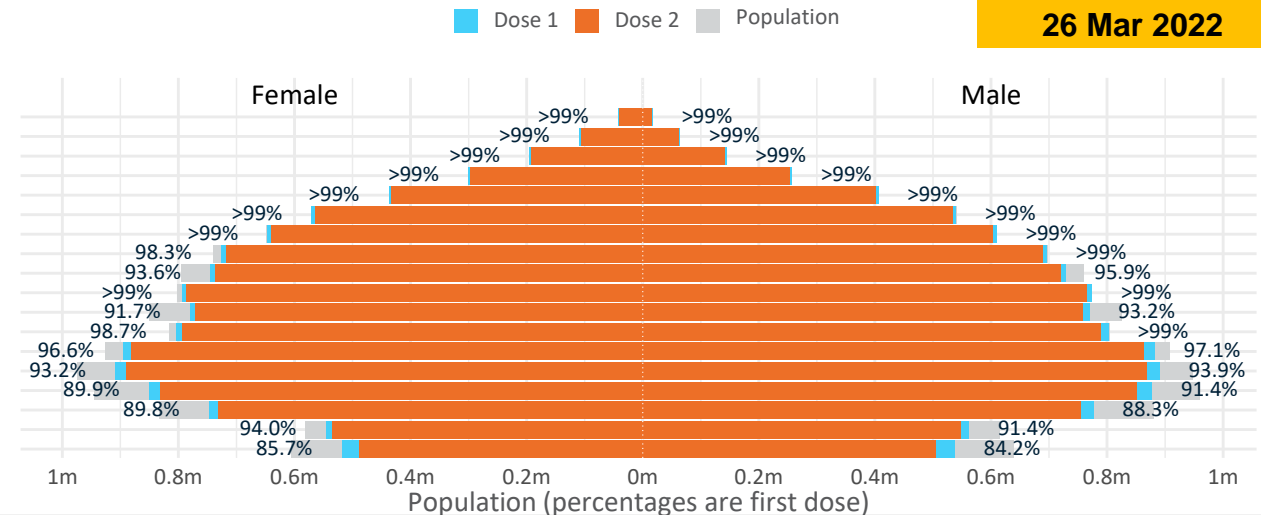
Data as at:  
26 Mar 2022

# Doses by age and sex

First and second doses by age and sex

	16+	50+	12-15	5-11
Dose 1	96.75% (19,949,020 doses / 20,619,959 people)	>99% (8,817,696 doses / 8,749,703 people)	84.95% (1,056,782 doses / 1,243,990 people)	52.08% (1,185,704 doses / 2,276,638 people)
Dose 2	95.06% (19,600,378 doses / 20,619,959 people)	>99% (8,706,500 doses / 8,749,703 people)	79.94% (994,471 doses / 1,243,990 people)	23.80% (541,913 doses / 2,276,638 people)

Age	Dose 1	Dose 2
95+	60,105 (>99%)	56,698 (>99%)
90-94	174,584 (>99%)	168,764 (>99%)
85-89	340,062 (>99%)	332,783 (>99%)
80-84	558,925 (>99%)	551,252 (>99%)
75-79	844,370 (>99%)	835,633 (>99%)
70-74	1,111,552 (>99%)	1,100,220 (>99%)
65-69	1,258,446 (>99%)	1,243,822 (98.9%)
60-64	1,424,769 (>99%)	1,407,941 (98.0%)
55-59	1,474,900 (94.8%)	1,457,571 (93.7%)
50-54	1,569,983 (>99%)	1,551,816 (>99%)
45-49	1,551,889 (92.6%)	1,531,715 (91.4%)
40-44	1,609,840 (>99%)	1,584,040 (97.8%)
35-39	1,782,058 (97.1%)	1,748,305 (95.3%)
30-34	1,808,293 (94.0%)	1,764,999 (91.8%)
25-29	1,739,254 (91.2%)	1,690,775 (88.7%)
20-24	1,530,578 (89.4%)	1,490,318 (87.0%)
16-19	1,109,412 (92.8%)	1,083,726 (90.6%)
12-15	1,056,782 (85.0%)	994,471 (79.9%)



	AUS	ACT	NSW	NT	QLD	SA	TAS	VIC	WA
16 and over - dose 1	19,949,020	351,490	6,303,168	174,413	3,841,489	1,369,614	443,325	5,142,725	2,083,739
16 and over - dose 2	19,600,378	346,090	6,208,160	169,564	3,770,612	1,337,776	433,689	5,066,550	2,045,498
16 and over - population	20,619,959*	344,037	6,565,651	190,571	4,112,707	1,440,400	440,172	5,407,574	2,114,978
16 and over % with dose 1	96.75%	>99%	96.00%	91.52%	93.41%	95.09%	>99%	95.10%	98.52%
16 and over % with dose 2	95.06%	>99%	94.56%	88.98%	91.68%	92.88%	98.53%	93.69%	96.71%
5 to 11 - dose 1	1,185,704	31,707	352,918	13,081	207,567	83,724	28,308	323,476	137,601
5 to 11 - dose 2	541,913	18,847	169,519	5,156	96,296	38,817	14,766	144,692	51,459
5 to 11 - population	2,276,638	39,789	716,460	24,750	478,731	148,816	45,033	578,499	244,154
5 to 11 % with dose 1	52.08%	79.69%	49.26%	52.85%	43.36%	56.26%	62.86%	55.92%	56.36%
5 to 11 % with dose 2	23.80%	47.37%	23.66%	20.83%	20.11%	26.08%	32.79%	25.01%	21.08%
12 to 15 - dose 1	1,056,782	20,084	325,841	10,912	207,653	68,515	22,929	276,257	115,446
12 to 15 - dose 2	994,471	19,360	310,043	9,759	193,409	64,440	21,700	262,895	104,946
12 to 15 - population	1,243,990	19,693	390,330	13,060	270,146	82,747	26,308	308,611	132,869
12 to 15 % with dose 1	84.95%	>99%	83.48%	83.55%	76.87%	82.80%	87.16%	89.52%	86.89%
12 to 15 % with dose 2	79.94%	98.31%	79.43%	74.72%	71.59%	77.88%	82.48%	85.19%	78.98%

\*National population will not equal sum of listed jurisdictions due to a small number of people counted in national population residing in some 'other' territories. Sum of state doses will not add to national total as some records are unable to be geocoded to a State or Territory.  
Doses sourced from Australian Immunisation Register, population from ABS ERP June 2020

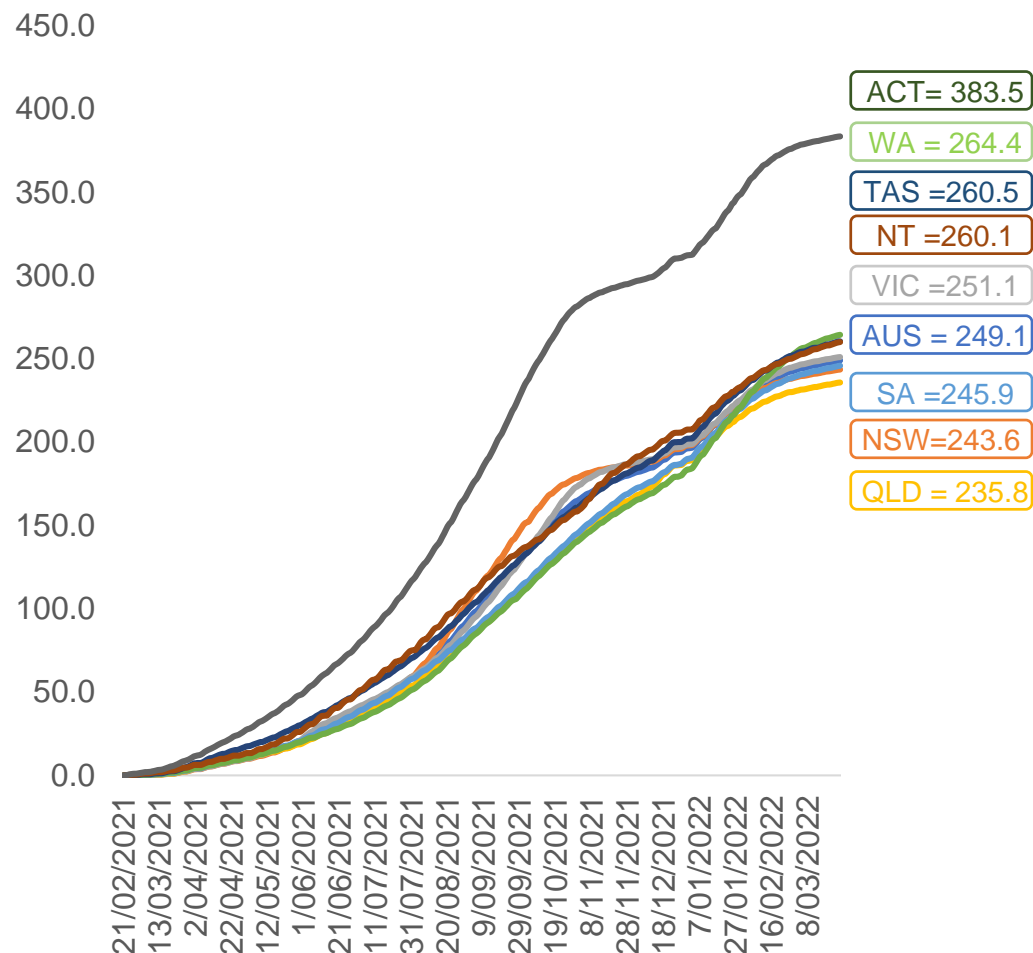


# Vaccinations by location

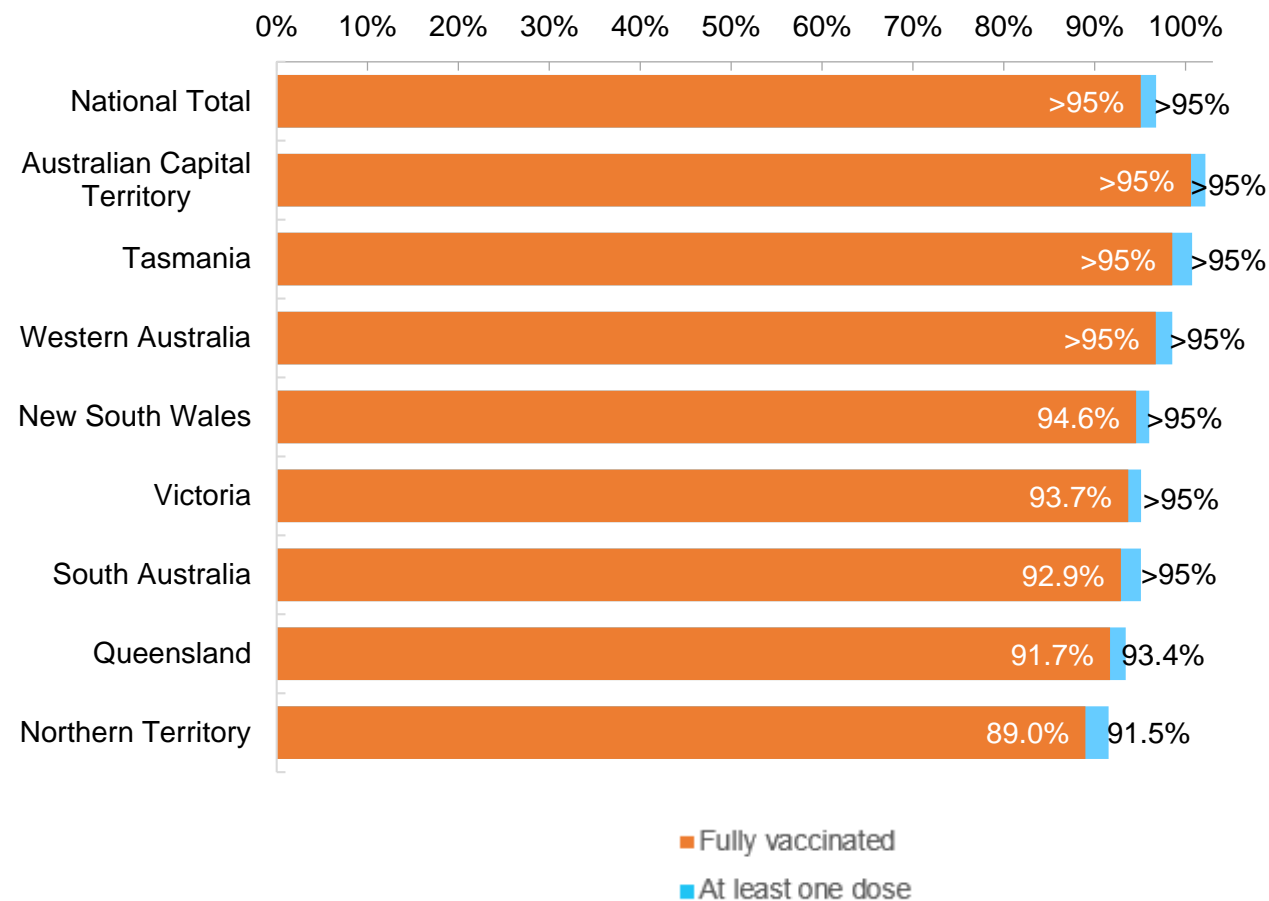
Data as at:  
26 Mar 2022

Australia's COVID-19  
Vaccine Roadmap

Cumulative total doses administered vs eligible state populations\*



First and Second Doses by residential location



\*Not an indication of percentage vaccinated, numbers will exceed 100 due to multiple doses required per person of the population.  
All doses are included for those aged 12 and above, and are based on vaccination provider location.



# Aboriginal and Torres Strait Islander peoples

## Number of people vaccinated

Data as at:  
22 Mar 2022  
Updated weekly

Australia's COVID-19  
Vaccine Roadmap



**435,465**

people over the age of 16  
have had at least one dose

**84.0%**

of people over the age of 16  
have had at least one dose



**413,329**

people over the age of 16  
are fully vaccinated

**79.7%**

of people over the age of 16 are  
fully vaccinated



People aged 12 – 15 years

**48,488**

**42,163**

**68.3%**

At least one dose

**59.4%**

Fully vaccinated

### 178 Aboriginal community controlled health services (ACCHS)

0#  
**ACT**

50  
**NSW**

27  
**NT**

44  
**QLD**

12  
**SA**

3  
**TAS**

21  
**VIC**

21  
**WA**

Medicare Address State <sup>##</sup>	Individuals Dose 1	Individuals Dose 1 %	Individuals Dose 2	Individuals Dose 2 %
Australian Capital Territory	4,826	91.2%	4,705	88.9%
New South Wales	134,554	86.6%	131,266	84.5%
Northern Territory	42,190	89.2%	39,740	84.0%
Queensland	114,999	81.0%	108,745	76.6%
South Australia	19,741	79.4%	18,169	73.1%
Tasmania	13,896	88.4%	13,429	85.4%
Victoria	35,245	89.6%	34,372	87.4%
Western Australia	53,111	84.8%	47,861	76.4%
Unknown/Other Territories	16,903	65.2%	15,042	58.0%
<b>Totals</b>	<b>435,465</b>	<b>84.0%</b>	<b>413,329</b>	<b>79.7%</b>

Source: Australian Immunisation Register

\*Identifying as Aboriginal and Torres Strait Islander is optional and the estimated population may be under reported.

\*\*Includes all Aboriginal and Torres Strait Islander peoples who have received a vaccination, not limited to those administered in an ACCHS setting

#ACCHS in the ACT are currently operating as a Commonwealth Vaccine Clinics so not included to avoid double counting

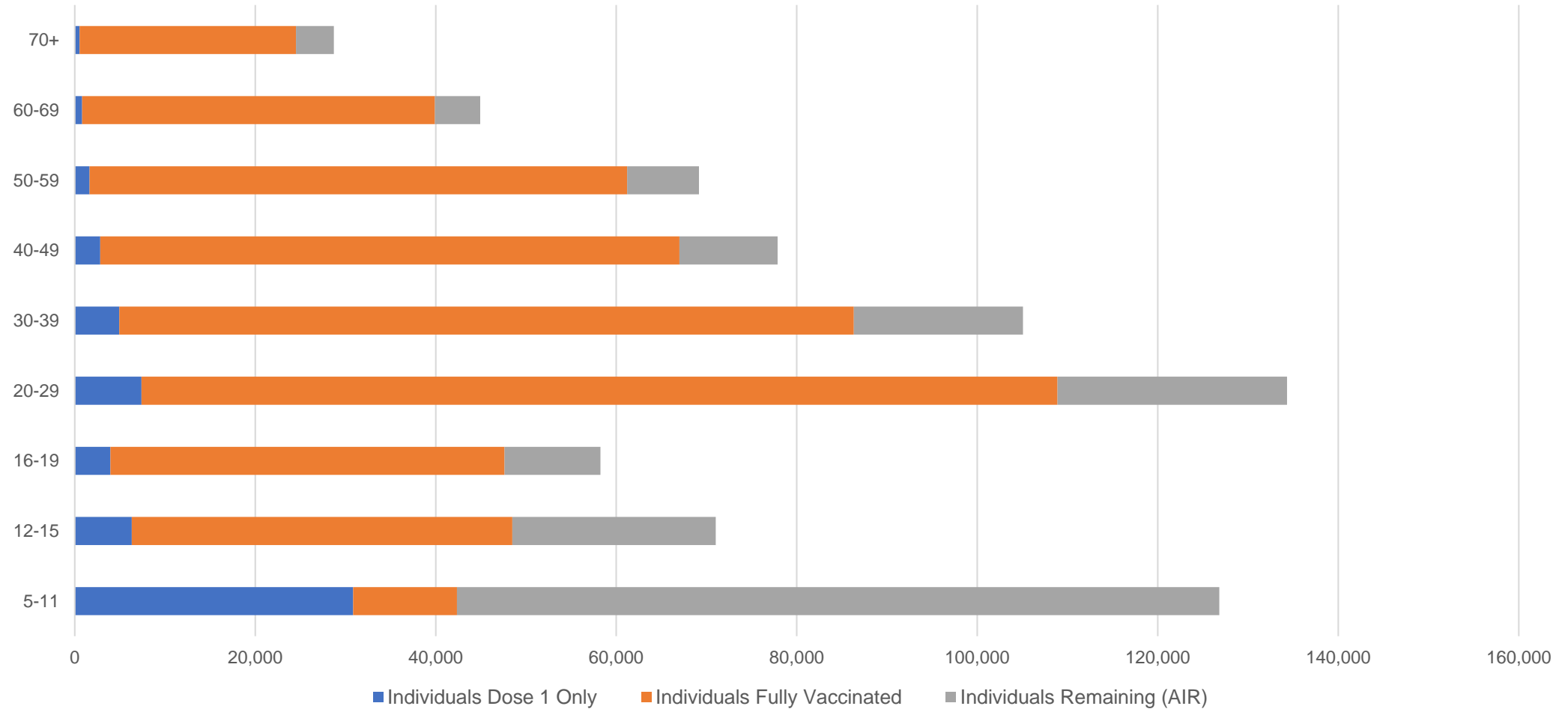
##The above table includes all identified Aboriginal and Torres Strait Islander people who are aged 16 and above by their state of residence.

# Aboriginal and Torres Strait Islander peoples

## Number of people vaccinated by age

Data as at:  
22 Mar 2022  
Updated weekly

Australia's COVID-19  
Vaccine Roadmap



Source: Australian Immunisation Register

# Commonwealth primary care

Data as at:  
26 Mar 2022

Australia's COVID-19  
Vaccine Roadmap



## Primary care vaccine administration sites

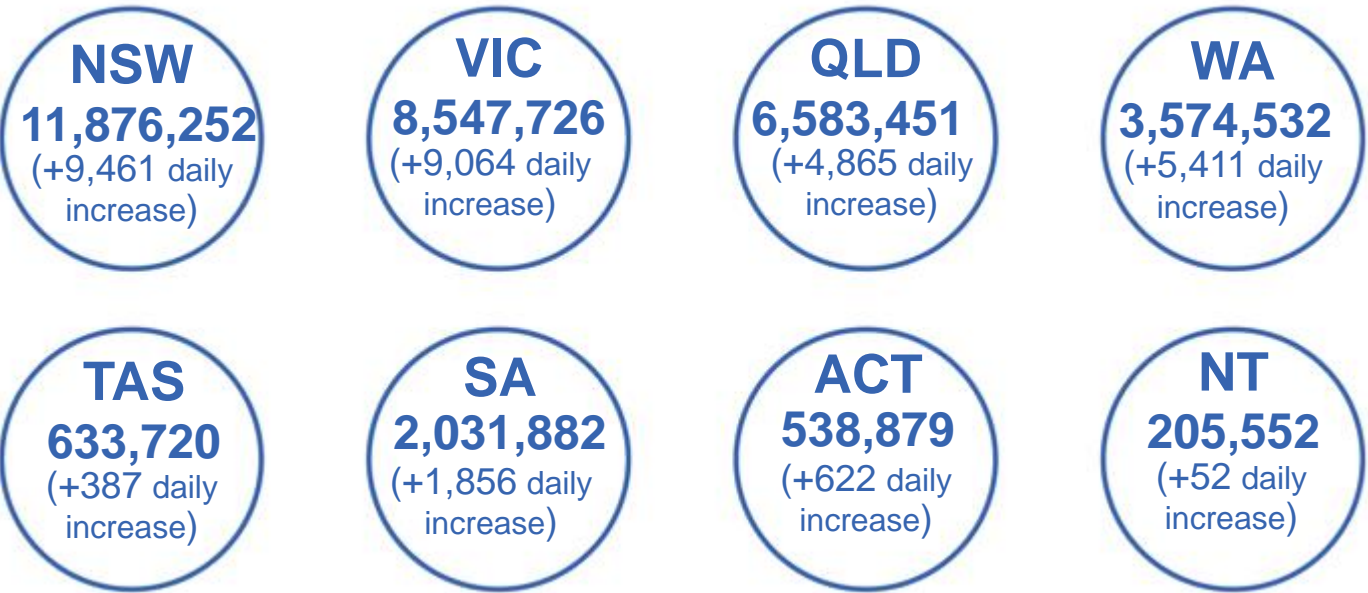
<b>5,793</b>	<b>128</b>	<b>178</b>	<b>3,587</b>
GPs	CVCs	ACCHS	Pharmacies



**34,261,127** total vaccine doses administered  
primary care settings as at 26 March  
**+ 32,987** recorded in the last 24 hours

## Primary care vaccinations by provider type

	Doses administered	Daily increase	7 day increase
<b>General Practice*</b> includes other Commonwealth	27,743,134	21,343	240,955
<b>Pharmacy</b>	6,517,993	11,644	124,267



**269,133**

doses administered to persons  
residing in other territories or with  
missing residential information

\*General practice includes Commonwealth Vaccination Clinics, Aboriginal Community Health Centres, Royal Flying Doctor Service and other Commonwealth vaccination facilities

Source: Australian Immunisation Register

Data as at:  
26 Mar 2022

# Commonwealth aged care and disability doses administered



**1,264,369** (+ 481 last 24 hours)

Total vaccine doses administered in aged care and disability facilities as at 26 March

Number of doses administered as part of the Commonwealth aged and disability care rollout

**NSW**  
**558,066**  
(+1 daily increase)

**VIC**  
**234,892**  
(-6# daily increase)

**QLD**  
**200,150**  
(+259 daily increase)

**WA**  
**106,233**  
(+113 daily increase)

**TAS**  
**22,476**  
(-5# daily increase)

**SA**  
**83,929**  
(-7# daily increase)

**ACT**  
**16,705**  
(+30 daily increase)

**NT**  
**7,460**  
(-2# daily increase)

**34,458**

doses administered to persons residing in other territories or with missing residential information

\*Sourced from the Australian Immunisation Register. Includes all persons vaccinated at participating residential aged care, disability and related industry settings.

\*\*State level breakdown indicates the residential location and may not align to the state in which the vaccination occurred.

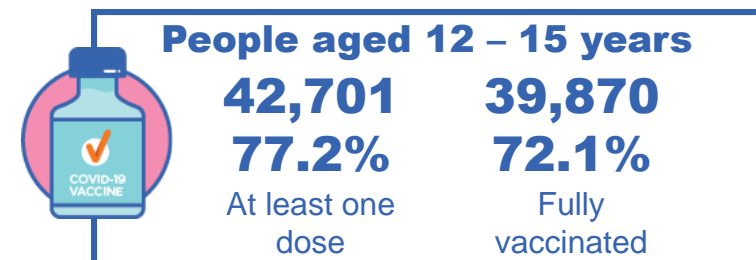
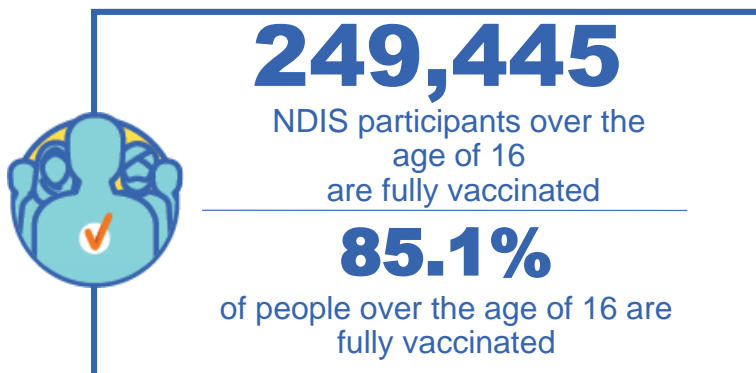
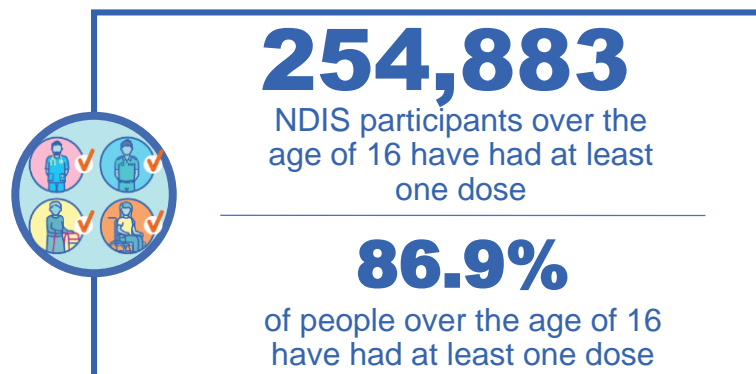
# Numbers are calculated as difference in daily cumulative reported numbers to allow for historical corrections in all data sources. This can occasionally result in negative numbers, such as for VIC, TAS, SA and NT, where historical details about doses have been updated.

Source: Australian Immunisation Register

# National Disability Insurance Scheme (NDIS) reported vaccinations

Data as at:  
24 March 2022  
Updated weekly

Australia's COVID-19  
Vaccine Roadmap



## NDIS participant vaccinations

	People aged 16+ with at least one dose	People aged 16+ fully vaccinated	% People aged 16+ with at least one dose	% People aged 16+ fully vaccinated
ACT	4,830	4,761	89.1%	87.8%
NSW	78,482	77,152	87.5%	86.0%
NT	2,204	2,119	77.3%	74.3%
QLD	50,153	49,017	85.3%	83.3%
SA	20,759	20,168	84.6%	82.2%
TAS	6,396	6,215	87.0%	84.5%
VIC	67,848	66,576	88.1%	86.5%
WA	24,211	23,437	87.9%	85.1%
National	254,883	249,445	86.9%	85.1%

Source: Linkage between National Disability Insurance Agency data and the Australian Immunisation Register. Total NDIS participant numbers as at 28th February. Australian Immunisation Register data as at 23 March. Includes all participants regardless of residence type.

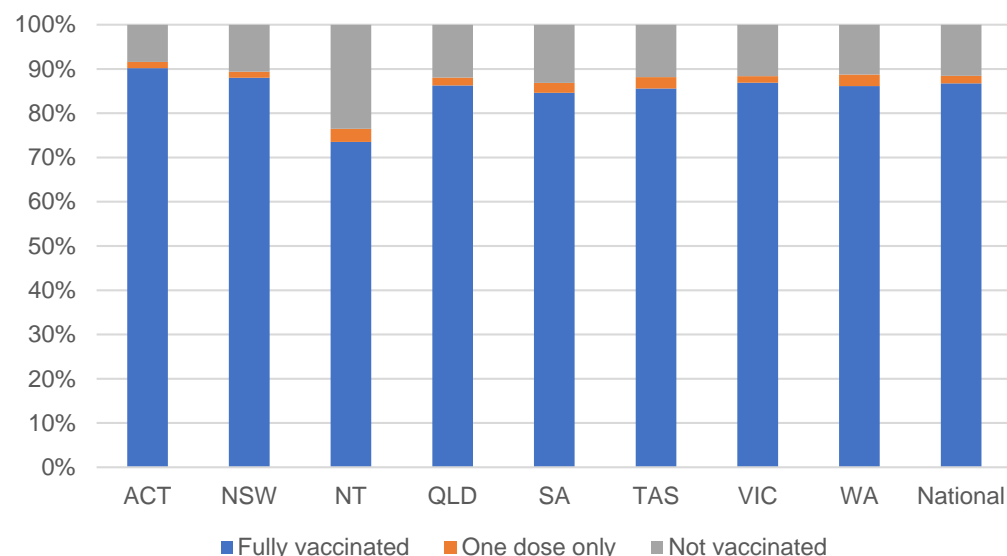
# National Disability Insurance Scheme (NDIS) reported vaccinations

Data as at:  
24 March 2022  
Updated Weekly

Australia's COVID-19  
Vaccine Roadmap

NATIONAL	Total people with at least one dose	People fully vaccinated	Total number of individuals in cohort	% People with at least one dose	% People fully vaccinated
NDIS participants living in disability accommodation	20,659	20,275	23,352	88.5%	86.8%

## NDIS participants in disability and aged care accommodation



Source: Linkage between National Disability Insurance Agency data and the Australian Immunisation Register. Includes participants residing in disability accommodation only.

Source: Total NDIS participant numbers as at 28th February. Participant data as at 23 March. Australian Immunisation Register data as at 23 March. Worker data as at 24 March.

## NDIS workforce vaccinations

	NDIS workers with at least one dose	NDIS workers fully vaccinated	% NDIS workers with at least one dose	% NDIS workers fully vaccinated
NSW	120,488	116,832	98.1%	95.1%
VIC	116,141	110,028	98.2%	93.1%
QLD	69,327	68,478	97.4%	96.3%
WA	32,724	30,401	98.5%	91.5%
SA	35,143	31,646	98.2%	88.4%
TAS	10,783	10,500	99.7%	97.1%
ACT	3,547	3,516	99.6%	98.8%
NT	3,403	3,253	97.6%	93.3%
<b>TOTAL</b>	<b>391,556</b>	<b>374,654</b>	<b>98.1%</b>	<b>93.9%</b>

Source: the NDIS Commission has established a requirement for registered NDIS providers who provide intensive disability support services to report on the vaccination status of workers they employ, or otherwise engage, to deliver NDIS-funded supports and services, and who are required to be vaccinated in accordance with in-force state and territory public health orders. The statistics reflect data reported to the NDIS Commission by registered NDIS providers and should be considered indicative and subject to change

Note: Some registered NDIS providers are yet to report on the vaccination status of their workforce. The NDIS Commission is working with those providers around reporting requirements.

Remaining workers not included include those exempt from vaccination requirements, workers whose vaccination status is not yet verified by the provider (such as workers on leave) and provider reporting anomalies.

# Residential aged care vaccination rollout

Australia's COVID-19  
Vaccine Roadmap

Data as at:  
24 Mar 2022  
Updated weekly

Residential aged care facilities status

100%

Commonwealth facilities visited (2,537 planned sites)

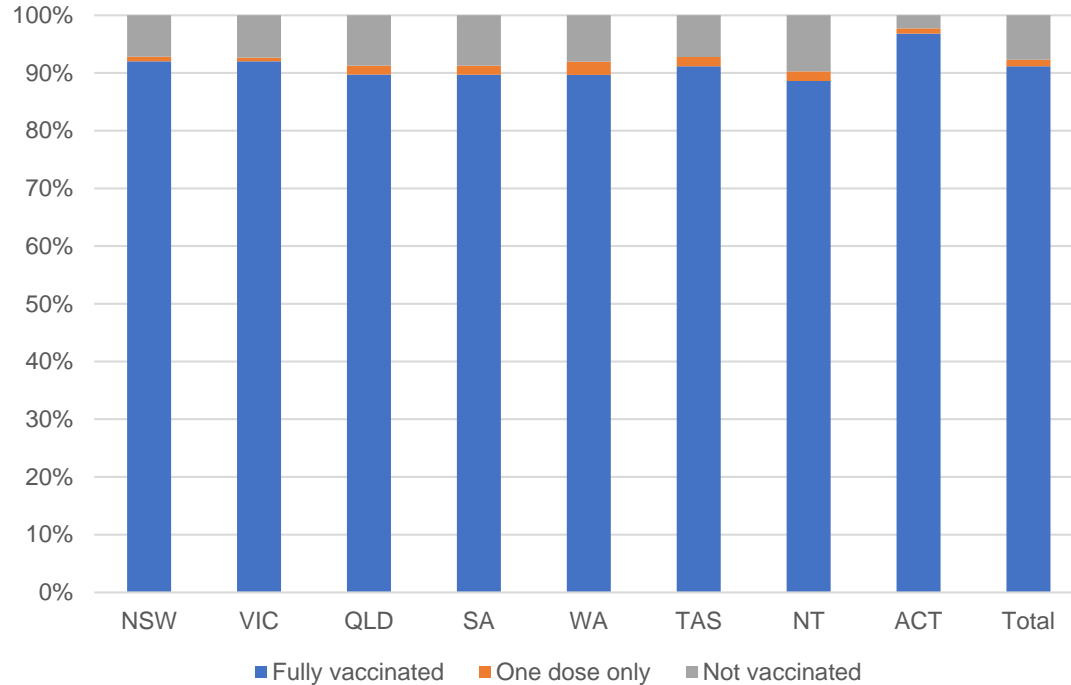
174,536

People fully vaccinated

176,706

People with at least one dose

## Aged care resident vaccinations



## Aged care worker vaccinations

Jurisdictions	Total workers with at least one dose	Workers fully vaccinated	% Workers with at least one dose	% Workers fully vaccinated
NSW	78,130	78,121	98.7%	98.7%
VIC	66,398	66,397	96.9%	96.9%
QLD	48,462	48,455	98.7%	98.7%
SA	26,362	26,342	97.7%	97.6%
WA	23,583	23,580	98.1%	98.1%
TAS	7,676	7,676	100.0%	100.0%
NT	844	844	100.0%	100.0%
ACT	3,038	3,038	99.9%	99.9%
Total	254,493	254,453	98.1%	98.1%

Source: My Aged Care Portal vaccination progress

\*Status updates are provided by facilities at least once per week. Reporting is updated Monday to Friday to encompass different facility updates being made on different days.

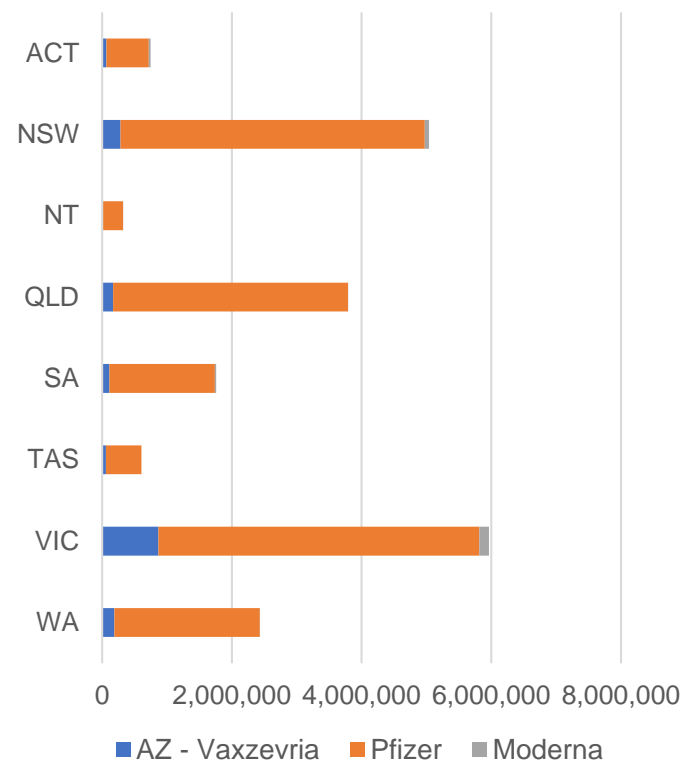
Data is sourced directly from Aged Care Service Providers and is not drawn or closely aligned with data from AIR due to inconsistencies and potential lags in uploading of records.



Data as at:  
26 Mar 2022

# Jurisdiction administered

Total vaccine doses administered in State and Territory clinics as at 26 March



**20,664,240** total vaccine doses administered  
in State and Territory clinics as at 26 March  
+ **27,354** recorded in the last 24 hours  
+ **141,740** recorded in the last 7 days

**NSW**  
**5,039,166**  
(+5,553 daily increase)

**VIC**  
**5,967,625**  
(+8,142 daily increase)

**QLD**  
**3,790,777**  
(+5,061 daily increase)

**WA**  
**2,432,695**  
(+3,115 daily increase)

**TAS**  
**606,280**  
(+424 daily increase)

**SA**  
**1,759,770**  
(+3,281 daily increase)

**ACT**  
**745,817**  
(+1,273 daily increase)

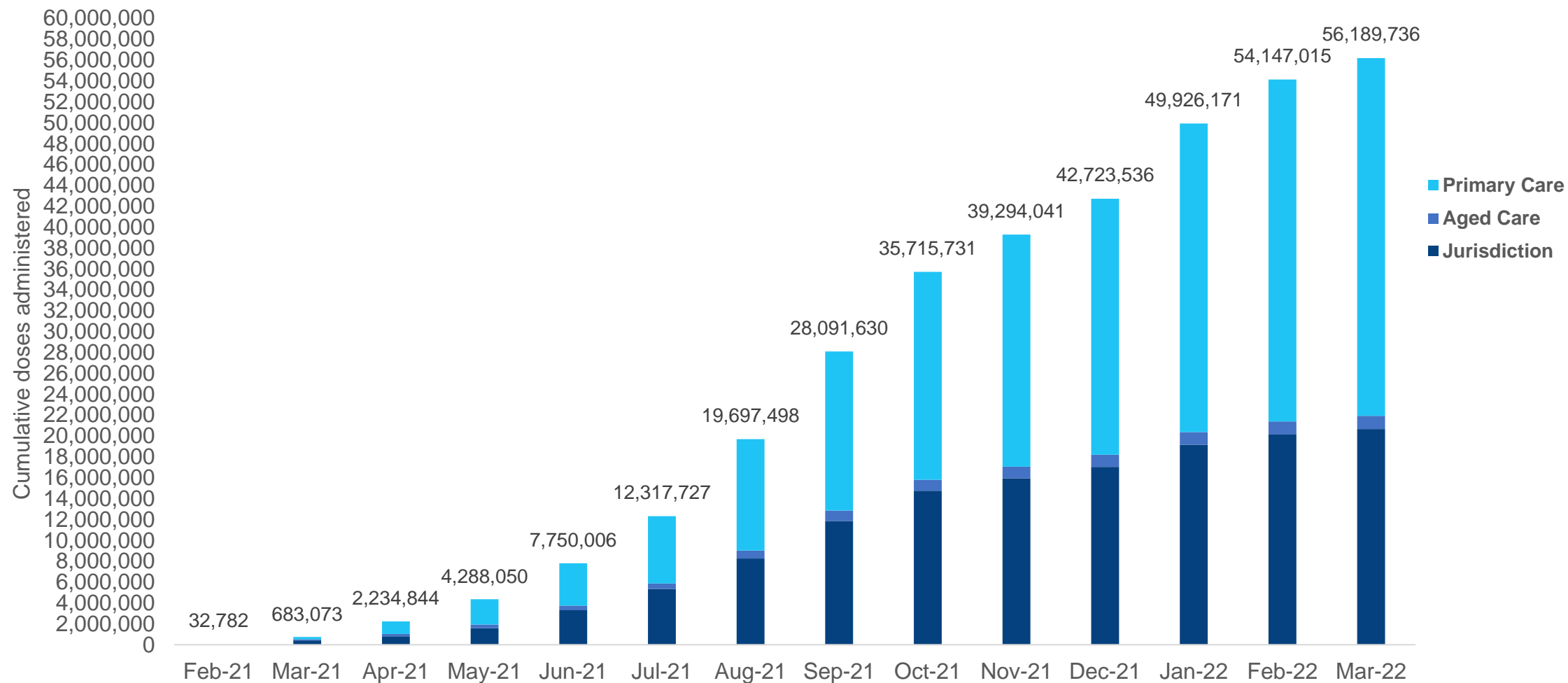
**NT**  
**322,110**  
(+505 daily increase)

\*Sourced from the Australian Immunisation Register. Numbers are calculated as difference in daily cumulative reported numbers to allow for historical corrections.

Source: Australian Immunisation Register

# Cumulative doses administered by channel

Data as at:  
26 Mar 2022



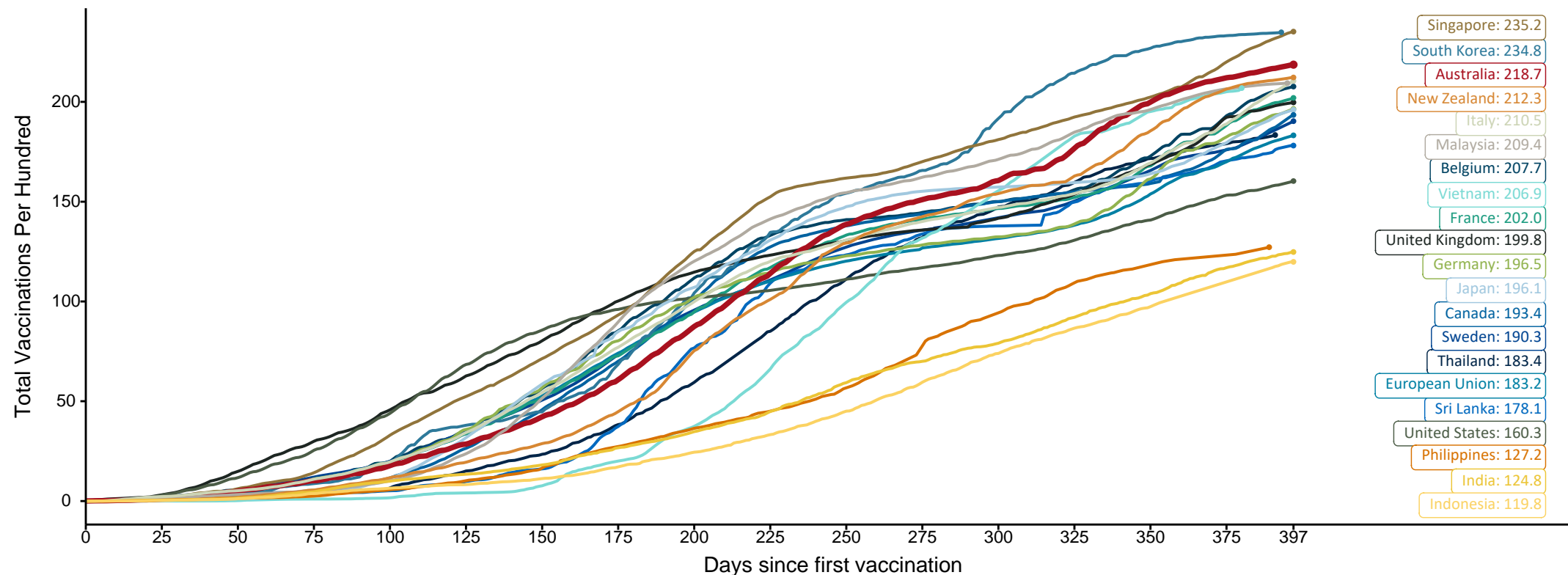
Source: Australian Immunisation Register

## Doses at equivalent stages of rollout (Day 397)

Data as at:  
26 Mar 2022

The x-axis is truncated at the length of Australia's vaccination program. Countries with intermittent reporting have had their doses per 100 imputed to Australia's current stage of rollout. Israel excluded as it is beyond scale of the graph

Cumulative doses administered (26 Mar): **56,189,736**



Note: From 11 January 2022, data for Australia includes all doses administered to people 5 and over. Prior to 11 January, data was for 12 and over.

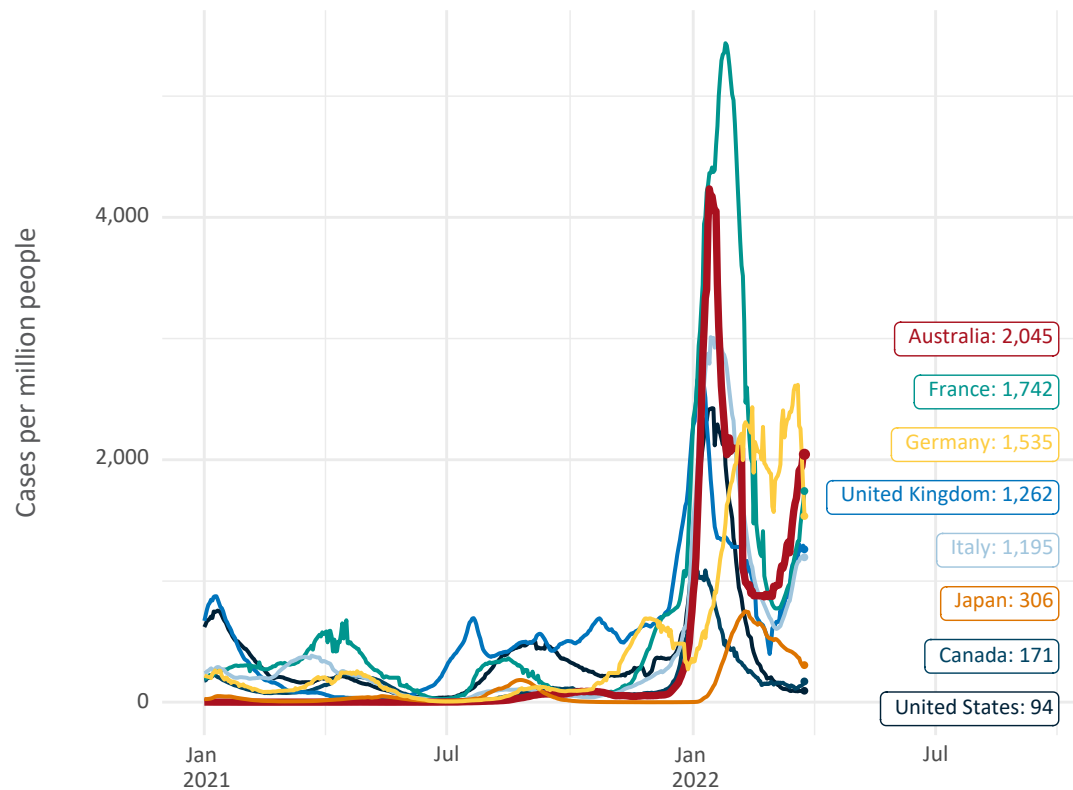
Source: Department of Health (Australia), Our World in Data (international)

Latest data: 26 March

Data as at:  
26 Mar 2022

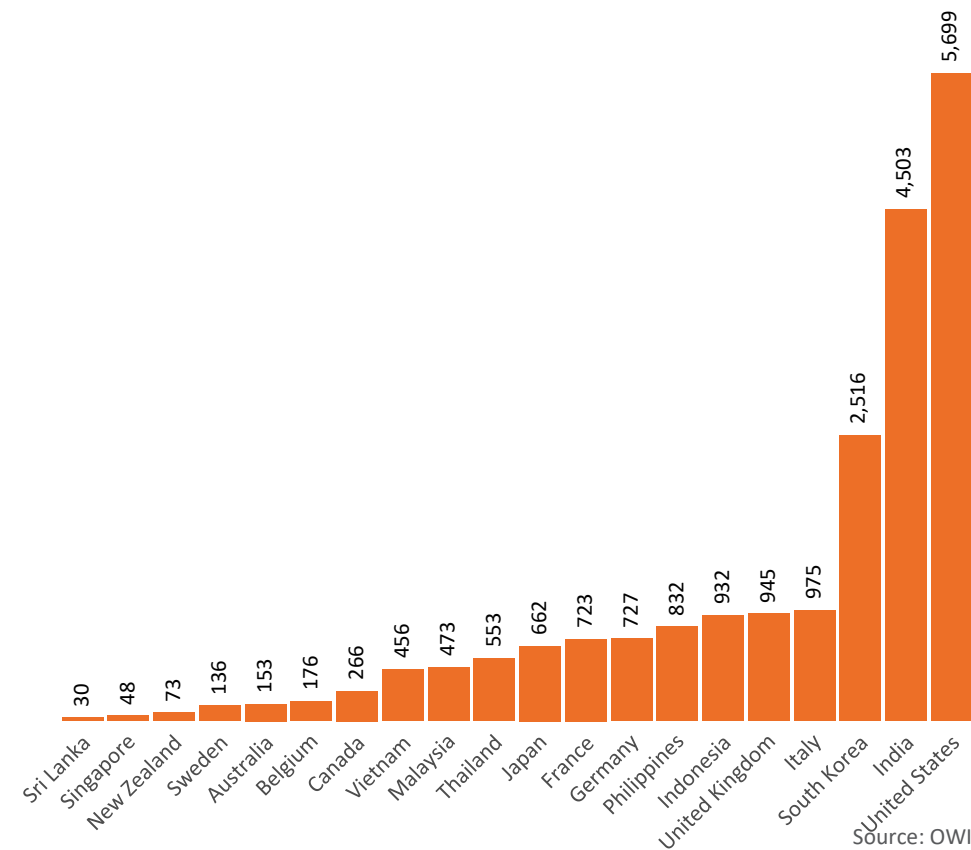
# International data – COVID-19

New daily cases per million in 2021, Australia and G7 countries  
Smoothed - 7 day average



Source: OWID  
Data downloaded: 27 Mar 2022 08:47  
Latest data: 25 Mar 2022

COVID-19 deaths in past 7 days - Australia and select countries



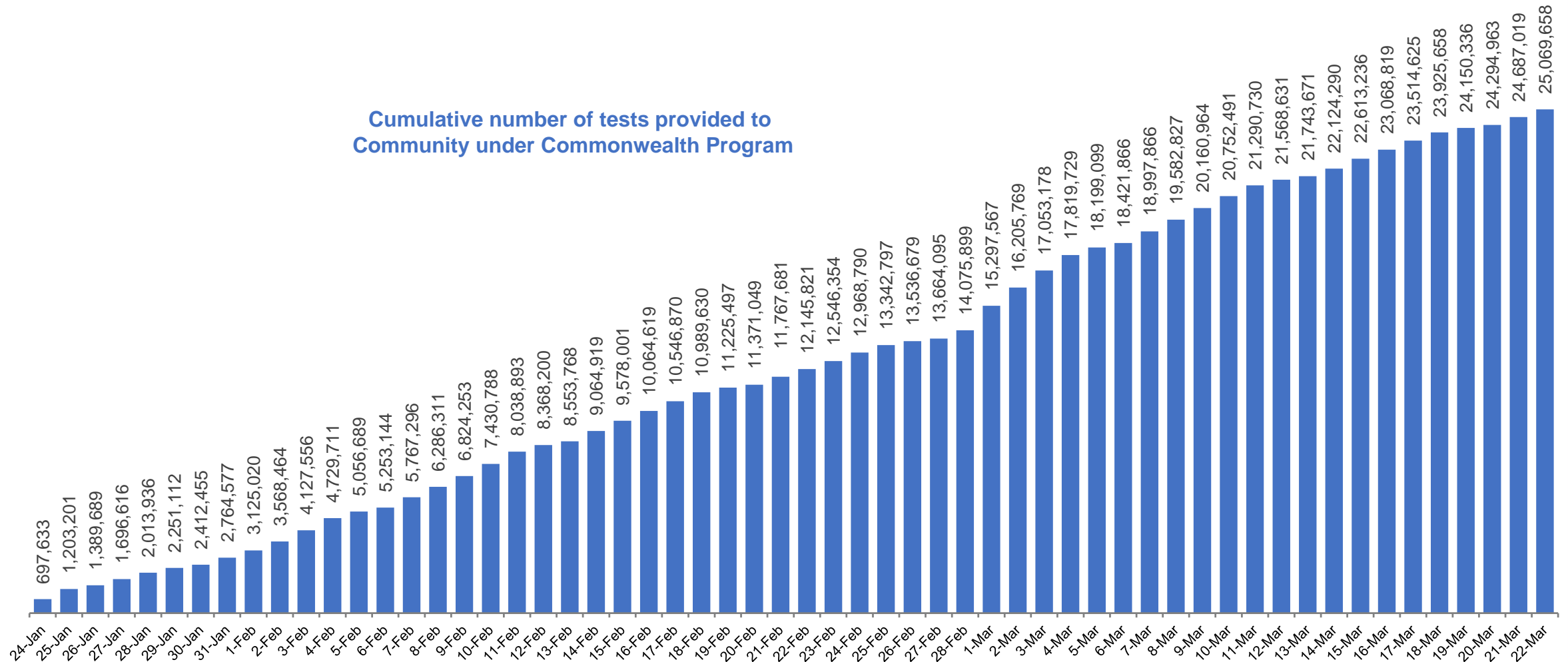
Source: OWID  
Data downloaded: 27 Mar 2022 08:47  
Latest data: 25 Mar 2022

# Concessional rapid antigen test program

**5,617 pharmacies** have delivered over **25 million rapid antigen tests** to more than **4m eligible concession card holders** under the Government's concessional rapid antigen test program.

**Data as at  
22 Mar 2022**

Cumulative number of tests provided to  
Community under Commonwealth Program



# Pandemic Response Payments

Australia's COVID-19  
Vaccine Roadmap

Data as at midnight: 20 Mar 2022  
Updated weekly



**2.38 million**

People have received at least one COVID  
Disaster Payment (including ISP200)

**\$13.88 billion**

Paid Out as at 20 Mar 2022

**7.22 million**

Claims granted across  
three different payments



**93%**

of Claims  
Received Digitally



**COVID Disaster Payment:**

5.89 million claims received - 2.19 million individuals paid a total of \$12.59 billion.

**\$200 Income Support Payment:**

353,000 claims received - 183,000 individuals paid a total of \$268.9 million.

**Pandemic Leave Disaster Payment:**

1.46 million claims received - 907,000 individuals paid a total of \$1.02 billion.



**THREE  
PAYMENTS  
AVAILABLE**

## COVID Disaster Payment

assisting during a  
lockdown event in a  
Commonwealth hotspot.

## Income Support Payment \$200

for income support  
recipients who lost at  
least 8 hours of work.

## Pandemic Leave Disaster Payment

for those who have to  
self-isolate, quarantine  
or care.

For more information visit:  
[servicesaustralia.gov.au](https://servicesaustralia.gov.au)

## COVID-19 DISASTER PAYMENTS

### Northern Territory

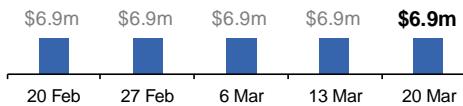
Lockdown (#3) from 16 Nov to 22 Nov  
Claiming period ended 27 Dec

**7,500 people have received at least  
one COVID Disaster Payment.**

**\$6.9m paid out as at 20 Mar 2022.**

**Nil paid in initial payments in the week  
ending 20 Mar 2022.**

Cumulative payments made by Territory since  
activation on 25 Aug 2021.



### Victoria

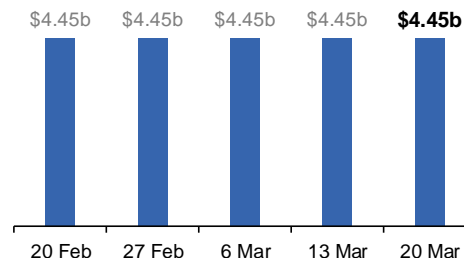
Lockdown (#6) from 6 Aug to 28 Oct  
Claiming period ended 9 Dec

**745,000 people have received at least  
one COVID Disaster Payment.**

**\$4.45b paid out as at 20 Mar 2022.**

**\$1,000 paid in initial and reoccurring  
payments in the week ending  
20 Mar 2022.**

Cumulative payments made by State since  
activation on 8 Jun 2021.



### New South Wales

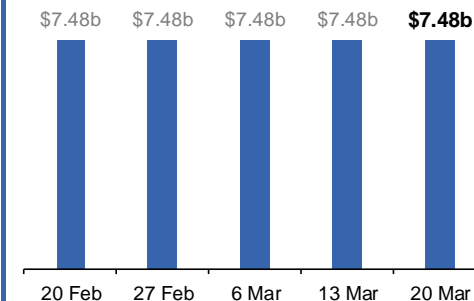
Lockdown from 24 Jun to 10 Oct  
Claiming period ended 27 Nov

**1.08m people have received at least  
one COVID Disaster Payment.**

**\$7.48b paid out as at 20 Mar 2022.**

**\$450 paid in initial and reoccurring  
payments in the week ending  
20 Mar 2022.**

Cumulative payments made by State since  
activation on 1 Jul 2021.



### Australian Capital Territory

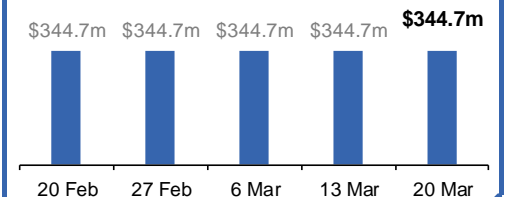
Lockdown from 12 Aug to 14 Oct  
Claiming period ended 25 Nov

**65,000 people have received at least  
one COVID Disaster Payment.**

**\$344.7m paid out as at 20 Mar 2022.**

**Nil paid in initial and reoccurring  
payments in the week ending  
20 Mar 2022.**

Cumulative payments made by Territory since  
activation on 20 Aug 2021.



# Pandemic Response Payments (continued)

Data as at midnight: 20 Mar 2022  
Updated weekly

## COVID-19 DISASTER PAYMENTS

