



**Australian Government**  
**Operation COVID Shield**

# COVID-19 Vaccine Roll-out

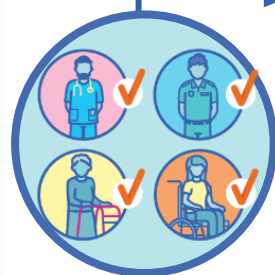
25 March 2022

Data as at:  
24 Mar 2022

## Total vaccine doses



**56,042,388** total vaccine  
doses administered nationally as at 24 March  
**+80,472** recorded in the last 24 hours



**19,944,440**

people have had at least one  
dose

**>95%**

of people over the age of 16  
have had at least one dose



**19,593,494**

people are fully vaccinated

**>95%**

of people over the age of 16 are  
fully vaccinated



**12,677,108**

people over the age of 16  
who have received more  
than two doses

**NSW**  
**17,421,878**  
(+22,590 daily  
increase)

**VIC**  
**14,782,681**  
(+19,589 daily  
increase)

**QLD**  
**10,619,356**  
(+14,657 daily  
increase)

**WA**  
**6,114,560**  
(+11,574 daily  
increase)

**TAS**  
**1,256,404**  
(+1,846 daily  
increase)

**SA**  
**3,856,412**  
(+6,409 daily  
increase)

**ACT**  
**1,443,877**  
(+2,637 daily  
increase)

**NT**  
**547,220**  
(+1,170 daily  
increase)

\*Administration state breakdown indicates state in which a vaccine was administered

\*\*Overall dose count includes instances of more than three doses per person in a small number of cases.

Source: Australian Immunisation Register

# Booster Vaccinations

Australia's COVID-19  
Vaccine Roadmap

Data as at:  
24 Mar 2022



**185,051**

Indigenous people who have  
received more than two doses

**50.5%**

of eligible population (366,121)



**162,265**

Aged Care Residents who have  
received more than two doses##

**93.0%**

of eligible population (174,496)



**170,661**

NDIS participants

**20,425**

NDIS residents

who have received more than two doses#

**71.4%**

of eligible population  
(238,000)

**86.4%**

of eligible population  
(23,000)



**12,677,108** total people who  
have received more than two doses nationally

**+45,063** recorded in the last 24 hours

**67.0%** of people who are eligible (18,921,827)  
have received more than two doses

NSW	People	% of Eligible
Cumulative	3,886,071	63.1%
Daily increase	12,563	

VIC	People	% of Eligible
Cumulative	3,435,515	68.5%
Daily increase	10,976	

QLD	People	% of Eligible
Cumulative	2,188,452	61.3%
Daily increase	8,453	

WA	People	% of Eligible
Cumulative	1,525,653	85.5%
Daily increase	6,206	

SA	People	% of Eligible
Cumulative	896,681	70.6%
Daily increase	3,426	

TAS	People	% of Eligible
Cumulative	286,260	69.7%
Daily increase	1,422	

ACT	People	% of Eligible
Cumulative	255,167	74.3%
Daily increase	523	

NT	People	% of Eligible
Cumulative	107,152	66.8%
Daily increase	631	

**96,157**

doses administered to persons  
residing in other territories or with  
missing residential information

\*People may belong to multiple groups and could be represented in the above breakdowns multiple times.

## Aged Care Residents data as at 24 March 2022.

# NDIS participants data as at 23 March 2022.

Source: Australian Immunisation Register

# Vaccinations by residential location

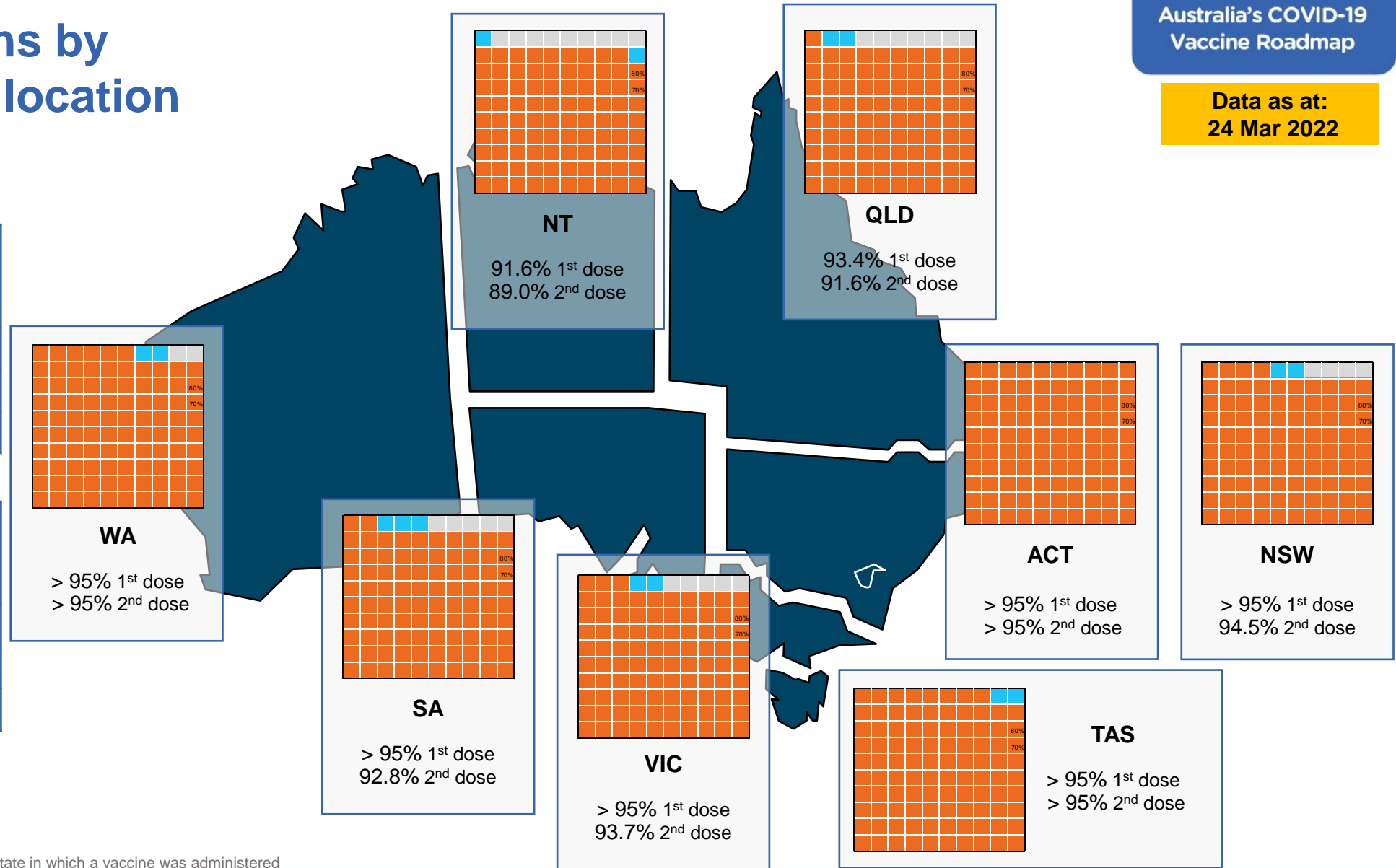
Data as at: 24 Mar 2022

## First doses

Age	Today	4 weeks ago	8 weeks ago
16+	>95%	>95%	>95%
50+	>95%	>95%	>95%
70+	>95%	>95%	>95%

## Fully vaccinated

Age	Today	4 weeks ago	8 weeks ago
16+	95.0%	94.6%	93.6%
50+	>95%	>95%	>95%
70+	>95%	>95%	>95%



\*Residential state may differ from the state in which a vaccine was administered

# Commonwealth and Jurisdiction vaccine doses administered

Data as at:  
24 Mar 2022



**56,042,388** total vaccine  
doses administered nationally as at 24 March  
**+ 80,472** recorded in the last 24 hours



**20,616,863**  
doses administered by state  
and territory facilities  
**+ 18,558**  
recorded in the last 24 hours

NSW	Jurisdictions	Commonwealth
Cumulative	5,029,932	12,391,946
Daily increase	3,762	18,828

TAS	Jurisdictions	Commonwealth
Cumulative	605,264	651,140
Daily increase	258	1,588

VIC	Jurisdictions	Commonwealth
Cumulative	5,954,475	8,828,206
Daily increase	4,148	15,441

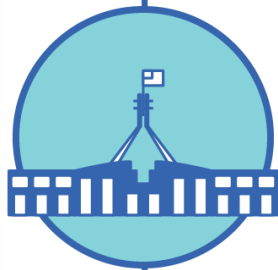
SA	Jurisdictions	Commonwealth
Cumulative	1,753,909	2,102,503
Daily increase	2,373	4,036

QLD	Jurisdictions	Commonwealth
Cumulative	3,782,500	6,836,856
Daily increase	2,608	12,049

ACT	Jurisdictions	Commonwealth
Cumulative	742,799	701,078
Daily increase	1,903	734

WA	Jurisdictions	Commonwealth
Cumulative	2,426,995	3,687,565
Daily increase	2,834	8,740

NT	Jurisdictions	Commonwealth
Cumulative	320,989	226,231
Daily increase	672	498

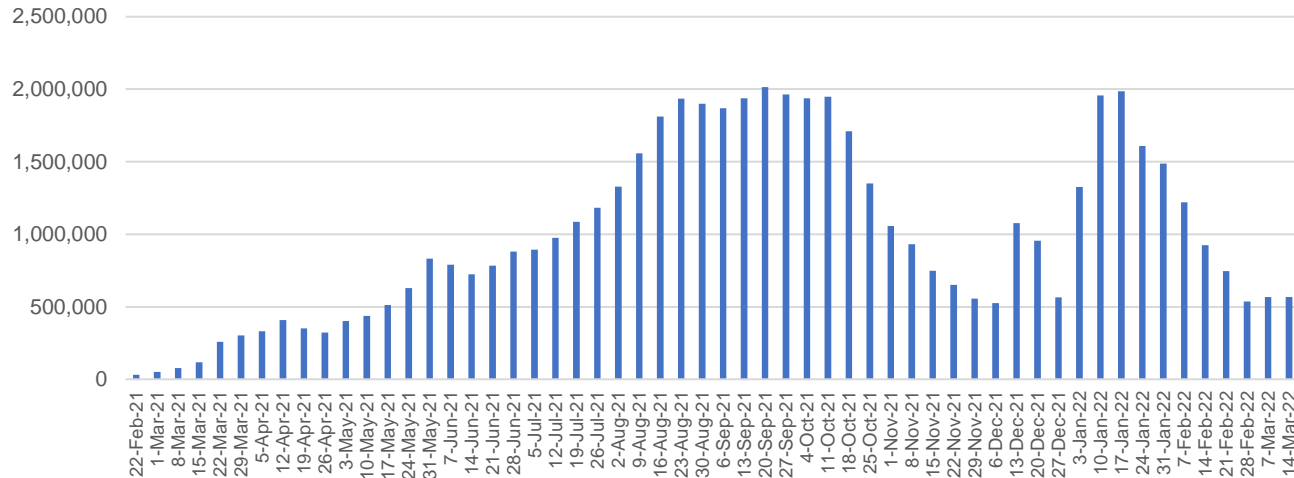


**35,425,525**  
doses administered by  
commonwealth facilities  
**+ 61,914**  
recorded in the last 24 hours

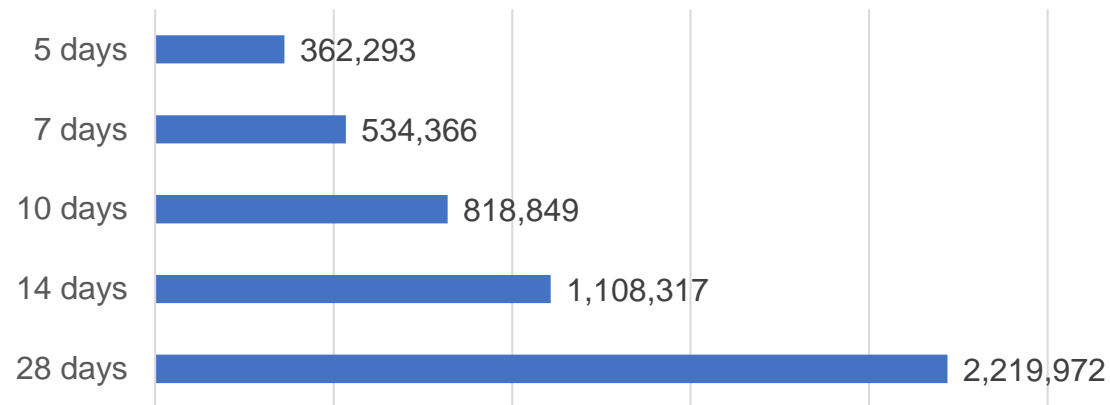
**34,161,896** total vaccine doses  
administered in primary care settings  
**1,263,629** total vaccine doses  
administered in aged care and disability  
settings

# Vaccine milestone charts

Doses Administered by Week



Doses Reported

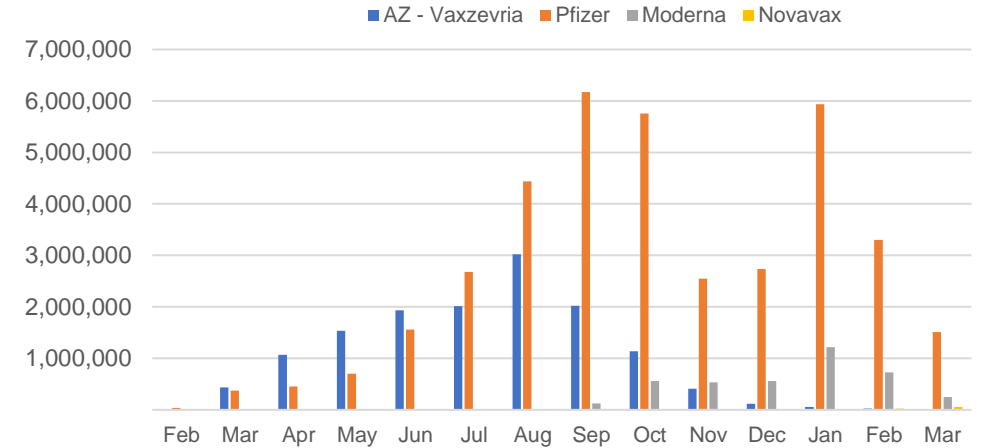


\*Sourced from the Australian Immunisation Register.

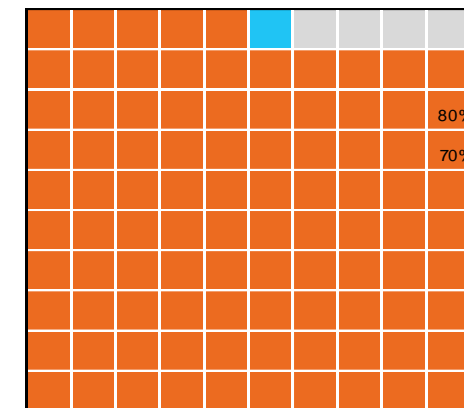
Data as at:  
24 Mar 2022

Australia's COVID-19  
Vaccine Roadmap

Doses by administration month and vaccine type



Eligible population percentage coverage



1st dose: > 95.0% 2nd dose: > 95.0%

\*Each square represents 1% of the national population. Squares are filled as milestones are achieved.

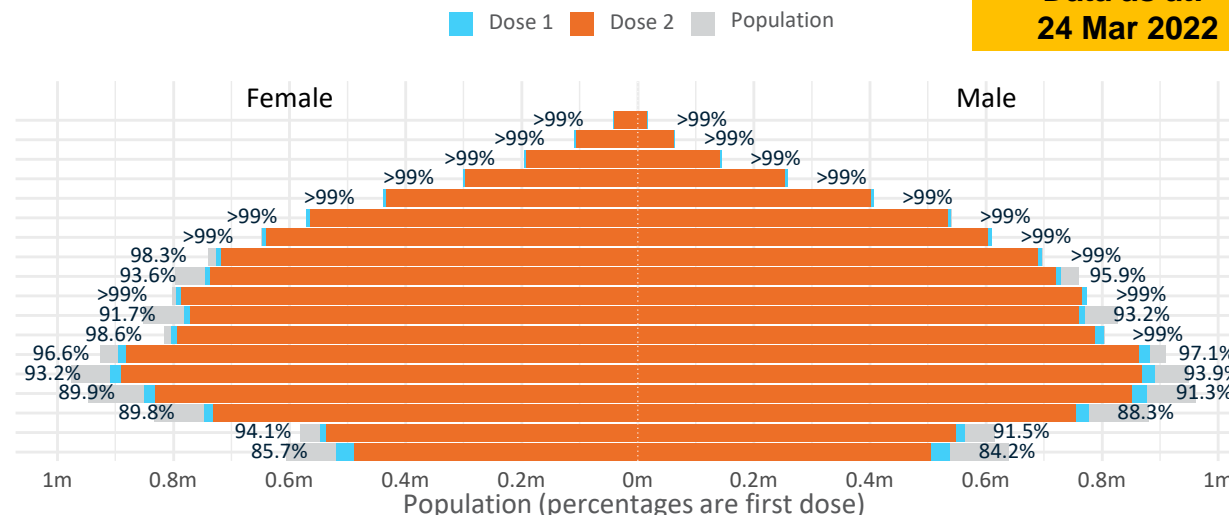
Data as at:  
24 Mar 2022

# Doses by age and sex

First and second doses by age and sex

	16+	50+	12-15	5-11
Dose 1	96.72% (19,944,440 doses / 20,619,959 people)	>99% (8,815,236 doses / 8,749,703 people)	84.93% (1,056,513 doses / 1,243,990 people)	51.93% (1,182,346 doses / 2,276,638 people)
Dose 2	95.02% (19,593,494 doses / 20,619,959 people)	>99% (8,703,325 doses / 8,749,703 people)	79.80% (992,648 doses / 1,243,990 people)	21.36% (486,361 doses / 2,276,638 people)

Age	Dose 1	Dose 2
95+	60,009 (>99%)	56,605 (>99%)
90-94	174,378 (>99%)	168,547 (>99%)
85-89	339,815 (>99%)	332,505 (>99%)
80-84	558,647 (>99%)	550,943 (>99%)
75-79	843,881 (>99%)	835,080 (>99%)
70-74	1,111,403 (>99%)	1,100,029 (>99%)
65-69	1,258,083 (>99%)	1,243,375 (98.8%)
60-64	1,424,484 (>99%)	1,407,526 (98.0%)
55-59	1,474,935 (94.8%)	1,457,477 (93.7%)
50-54	1,569,601 (>99%)	1,551,238 (>99%)
45-49	1,552,014 (92.6%)	1,531,642 (91.3%)
40-44	1,609,010 (>99%)	1,582,954 (97.7%)
35-39	1,781,595 (97.1%)	1,747,571 (95.2%)
30-34	1,807,807 (94.0%)	1,764,198 (91.7%)
25-29	1,738,853 (91.2%)	1,690,215 (88.7%)
20-24	1,530,242 (89.4%)	1,489,751 (87.0%)
16-19	1,109,683 (92.8%)	1,083,838 (90.6%)
12-15	1,056,513 (84.9%)	992,648 (79.8%)



	AUS	ACT	NSW	NT	QLD	SA	TAS	VIC	WA
16 and over - dose 1	19,944,440	351,395	6,302,839	174,482	3,840,368	1,369,242	443,263	5,142,583	2,083,087
16 and over - dose 2	19,593,494	345,998	6,207,679	169,601	3,768,754	1,337,045	433,547	5,066,326	2,044,043
16 and over - population	20,619,959*	344,037	6,565,651	190,571	4,112,707	1,440,400	440,172	5,407,574	2,114,978
16 and over % with dose 1	96.72%	>99%	96.00%	91.56%	93.38%	95.06%	>99%	95.10%	98.49%
16 and over % with dose 2	95.02%	>99%	94.55%	89.00%	91.64%	92.82%	98.49%	93.69%	96.65%
5 to 11 - dose 1	1,182,346	31,647	351,812	13,057	207,180	83,519	28,315	322,704	136,835
5 to 11 - dose 2	486,361	17,100	152,925	4,676	87,867	34,487	14,456	127,912	44,836
5 to 11 - population	2,276,638	39,789	716,460	24,750	478,731	148,816	45,033	578,499	244,154
5 to 11 % with dose 1	51.93%	79.54%	49.10%	52.76%	43.28%	56.12%	62.88%	55.78%	56.04%
5 to 11 % with dose 2	21.36%	42.98%	21.34%	18.89%	18.35%	23.17%	32.10%	22.11%	18.36%
12 to 15 - dose 1	1,056,513	20,078	325,862	10,918	207,603	68,502	22,904	276,253	115,272
12 to 15 - dose 2	992,648	19,320	309,722	9,740	193,104	64,298	21,647	262,482	104,444
12 to 15 - population	1,243,990	19,693	390,330	13,060	270,146	82,747	26,308	308,611	132,869
12 to 15 % with dose 1	84.93%	>99%	83.48%	83.60%	76.85%	82.78%	87.06%	89.51%	86.76%
12 to 15 % with dose 2	79.80%	98.11%	79.35%	74.58%	71.48%	77.70%	82.28%	85.05%	78.61%

\*National population will not equal sum of listed jurisdictions due to a small number of people counted in national population residing in some 'other' territories. Sum of state doses will not add to national total as some records are unable to be geocoded to a State or Territory.  
Doses sourced from Australian Immunisation Register, population from ABS ERP June 2020

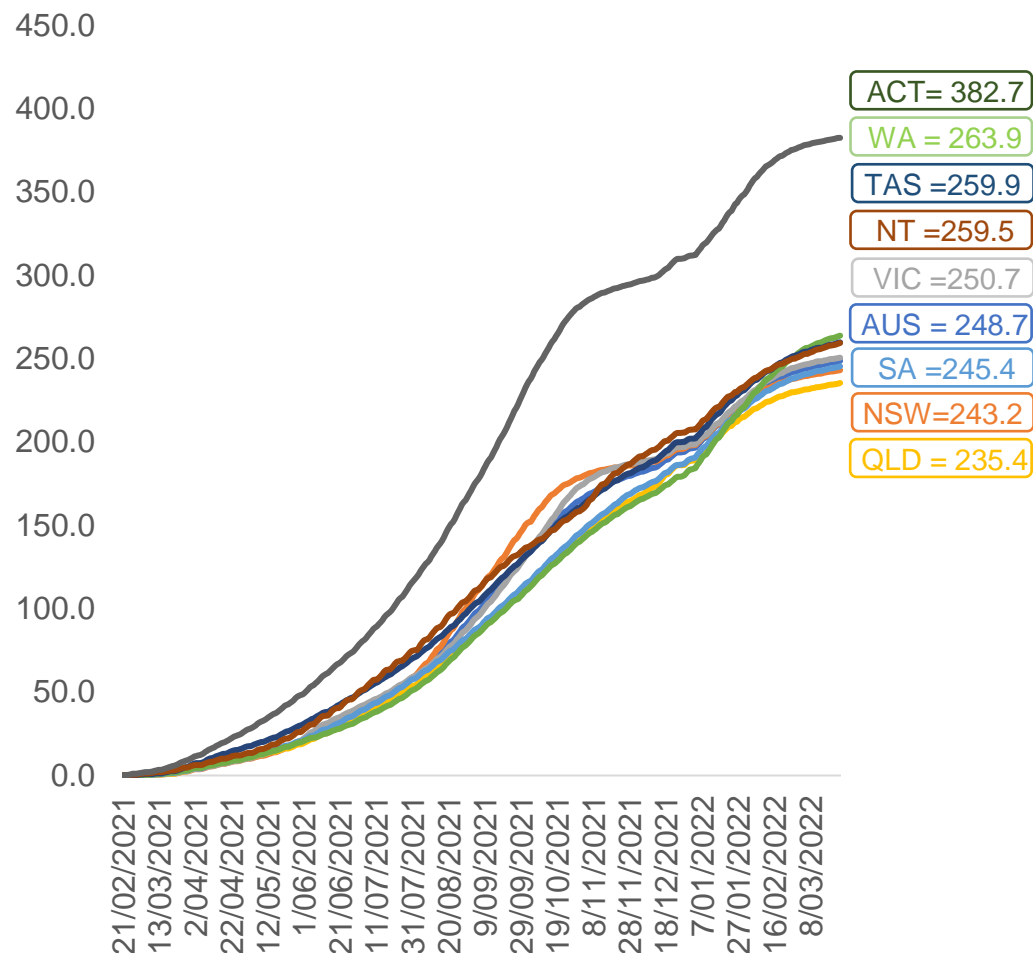


# Vaccinations by location

Data as at:  
24 Mar 2022

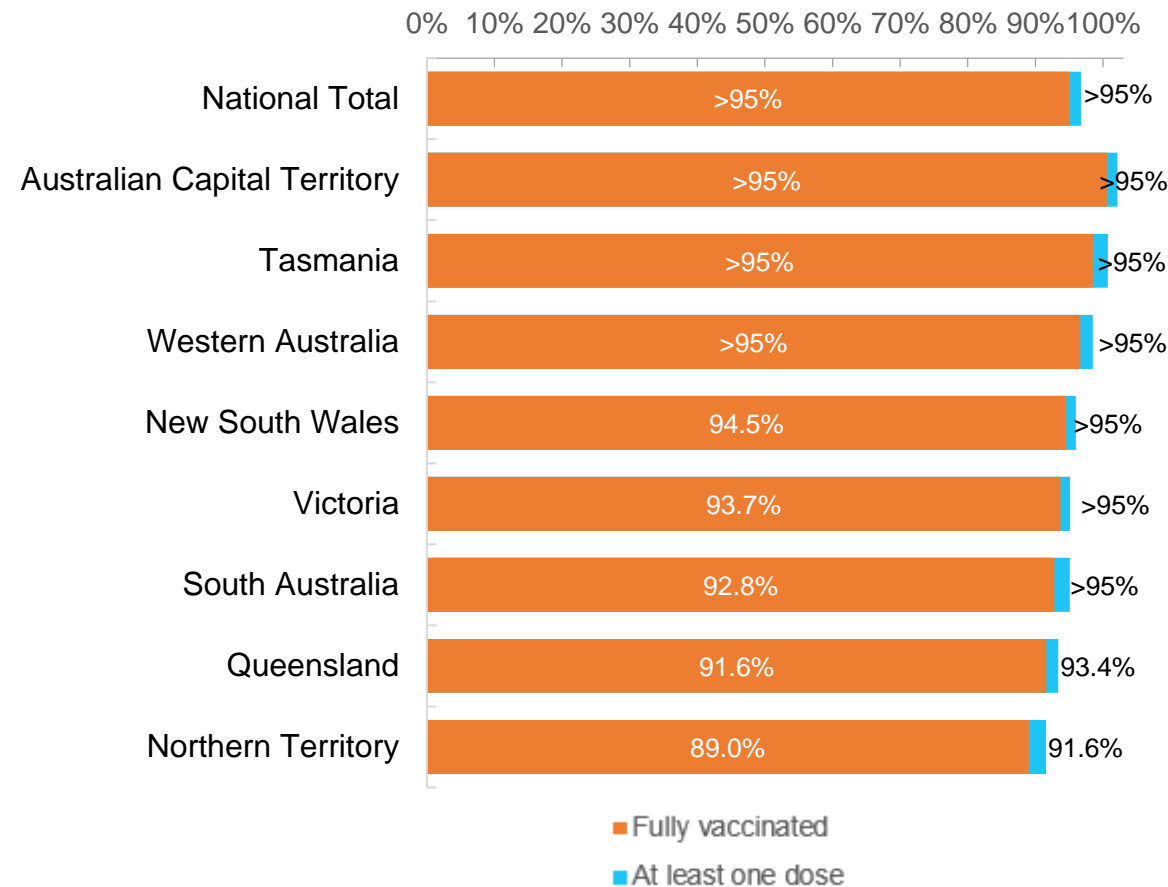
Australia's COVID-19  
Vaccine Roadmap

Cumulative total doses administered vs eligible state populations\*



\*Not an indication of percentage vaccinated, numbers will exceed 100 due to multiple doses required per person of the population.  
All doses are included for those aged 12 and above, and are based on vaccination provider location.

First and Second Doses by residential location





# Aboriginal and Torres Strait Islander peoples

## Number of people vaccinated

Data as at:  
22 Mar 2022  
Updated weekly

Australia's COVID-19  
Vaccine Roadmap



**435,465**

people over the age of 16  
have had at least one dose

**84.0%**

of people over the age of 16  
have had at least one dose



**413,329**

people over the age of 16  
are fully vaccinated

**79.7%**

of people over the age of 16 are  
fully vaccinated



People aged 12 – 15 years

**48,488**

**42,163**

**68.3%**

At least one dose

**59.4%**

Fully vaccinated

### 178 Aboriginal community controlled health services (ACCHS)

0#

50

27

44

12

3

21

21

**ACT**

**NSW**

**NT**

**QLD**

**SA**

**TAS**

**VIC**

**WA**

Medicare Address State <sup>##</sup>	Individuals Dose 1	Individuals Dose 1 %	Individuals Dose 2	Individuals Dose 2 %
Australian Capital Territory	4,826	91.2%	4,705	88.9%
New South Wales	134,554	86.6%	131,266	84.5%
Northern Territory	42,190	89.2%	39,740	84.0%
Queensland	114,999	81.0%	108,745	76.6%
South Australia	19,741	79.4%	18,169	73.1%
Tasmania	13,896	88.4%	13,429	85.4%
Victoria	35,245	89.6%	34,372	87.4%
Western Australia	53,111	84.8%	47,861	76.4%
Unknown/Other Territories	16,903	65.2%	15,042	58.0%
<b>Totals</b>	<b>435,465</b>	<b>84.0%</b>	<b>413,329</b>	<b>79.7%</b>

Source: Australian Immunisation Register

\*Identifying as Aboriginal and Torres Strait Islander is optional and the estimated population may be under reported.

\*\*Includes all Aboriginal and Torres Strait Islander peoples who have received a vaccination, not limited to those administered in an ACCHS setting

#ACCHS in the ACT are currently operating as a Commonwealth Vaccine Clinics so not included to avoid double counting

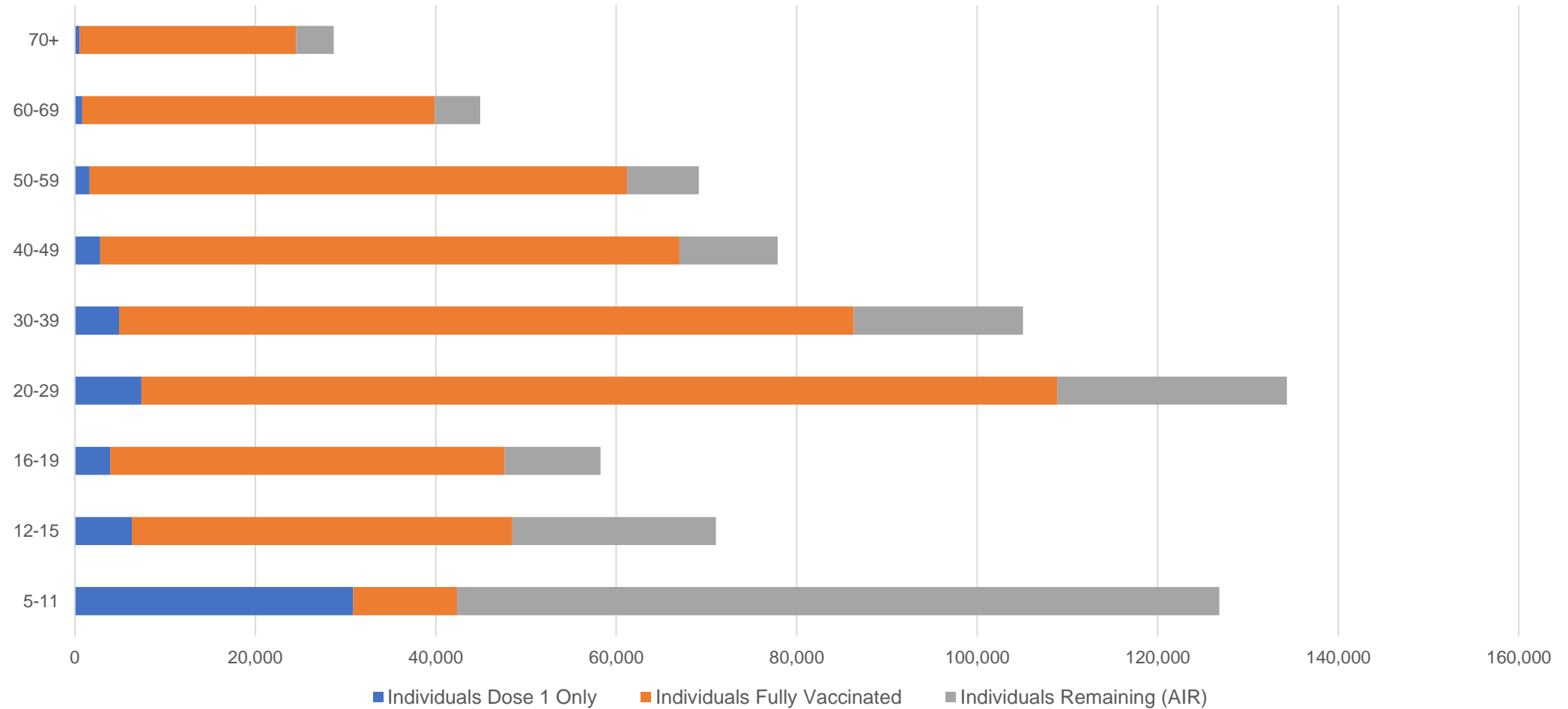
##The above table includes all identified Aboriginal and Torres Strait Islander people who are aged 16 and above by their state of residence.

# Aboriginal and Torres Strait Islander peoples

## Number of people vaccinated by age

Data as at:  
22 Mar 2022  
Updated weekly

Australia's COVID-19  
Vaccine Roadmap



Source: Australian Immunisation Register

# Commonwealth primary care

Data as at:  
24 Mar 2022

Australia's COVID-19  
Vaccine Roadmap



## Primary care vaccine administration sites

<b>5,793</b>	<b>128</b>	<b>178</b>	<b>3,587</b>
GPs	CVCs	ACCHS	Pharmacies



**34,161,896** total vaccine doses administered  
primary care settings as at 24 March  
**+ 61,306** recorded in the last 24 hours

## Primary care vaccinations by provider type

	Doses administered	Daily increase	7 day increase
General Practice* includes other Commonwealth	27,678,032	40,225	253,376
Pharmacy	6,483,864	21,081	129,953

**NSW**  
**11,845,698**  
(+18,075 daily increase)

**VIC**  
**8,522,437**  
(+15,129 daily increase)

**QLD**  
**6,566,017**  
(+11,683 daily increase)

**WA**  
**3,560,554**  
(+8,423 daily increase)

**TAS**  
**631,742**  
(+1,583 daily increase)

**SA**  
**2,026,058**  
(+3,967 daily increase)

**ACT**  
**537,329**  
(+541 daily increase)

**NT**  
**205,102**  
(+459 daily increase)

**266,959**

doses administered to persons  
residing in other territories or with  
missing residential information

\*General practice includes Commonwealth Vaccination Clinics, Aboriginal Community Health Centres, Royal Flying Doctor Service and other Commonwealth vaccination facilities

Source: Australian Immunisation Register

Data as at:  
24 Mar 2022

# Commonwealth aged care and disability doses administered



**1,263,629** (+ 608 last 24 hours)

Total vaccine doses administered in aged care and disability facilities as at 24 March

Number of doses administered as part of the Commonwealth aged and disability care rollout

**NSW**  
**558,081**  
(+2 daily increase)

**VIC**  
**234,935**  
(-24# daily increase)

**QLD**  
**199,880**  
(+228 daily increase)

**WA**  
**105,970**  
(+224 daily increase)

**TAS**  
**22,460**  
(+5 daily increase)

**SA**  
**83,927**  
(-6# daily increase)

**ACT**  
**16,650**  
(-1# daily increase)

**NT**  
**7,447**  
(+19 daily increase)

**34,279** doses administered to persons residing in other territories or with missing residential information

Source: Australian Immunisation Register

\*Sourced from the Australian Immunisation Register. Includes all persons vaccinated at participating residential aged care, disability and related industry settings.

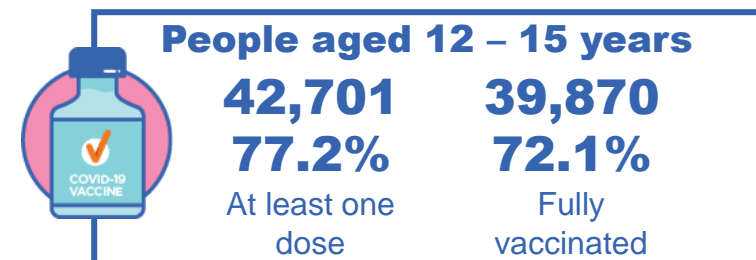
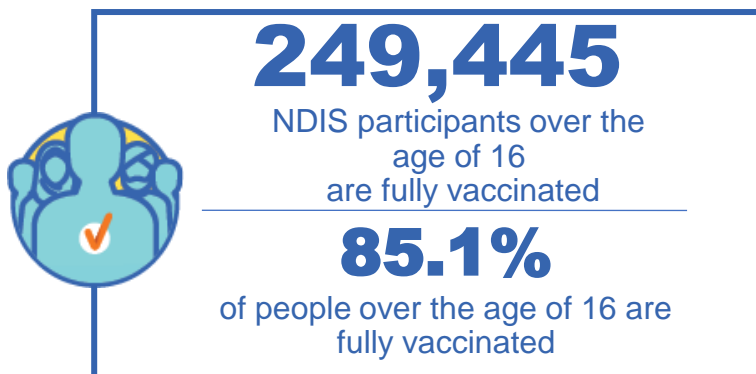
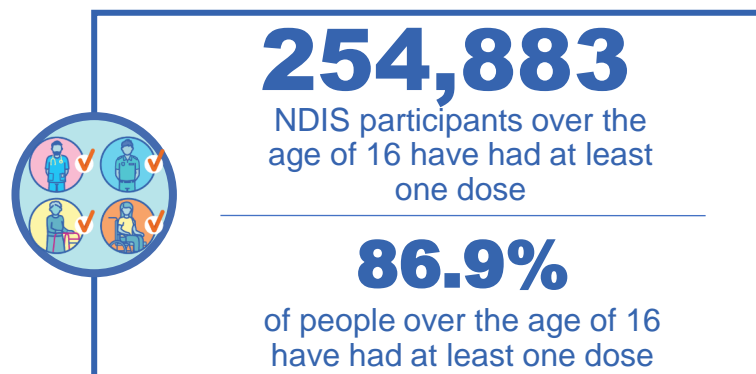
\*\*State level breakdown indicates the residential location and may not align to the state in which the vaccination occurred.

# Numbers are calculated as difference in daily cumulative reported numbers to allow for historical corrections in all data sources. This can occasionally result in negative numbers, such as for VIC, SA and ACT, where historical details about doses have been updated.

# National Disability Insurance Scheme (NDIS) reported vaccinations

Data as at:  
24 March 2022  
Updated weekly

Australia's COVID-19  
Vaccine Roadmap



## NDIS participant vaccinations

	People aged 16+ with at least one dose	People aged 16+ fully vaccinated	% People aged 16+ with at least one dose	% People aged 16+ fully vaccinated
ACT	4,830	4,761	89.1%	87.8%
NSW	78,482	77,152	87.5%	86.0%
NT	2,204	2,119	77.3%	74.3%
QLD	50,153	49,017	85.3%	83.3%
SA	20,759	20,168	84.6%	82.2%
TAS	6,396	6,215	87.0%	84.5%
VIC	67,848	66,576	88.1%	86.5%
WA	24,211	23,437	87.9%	85.1%
National	254,883	249,445	86.9%	85.1%

Source: Linkage between National Disability Insurance Agency data and the Australian Immunisation Register. Total NDIS participant numbers as at 28th February. Australian Immunisation Register data as at 23 March. Includes all participants regardless of residence type.

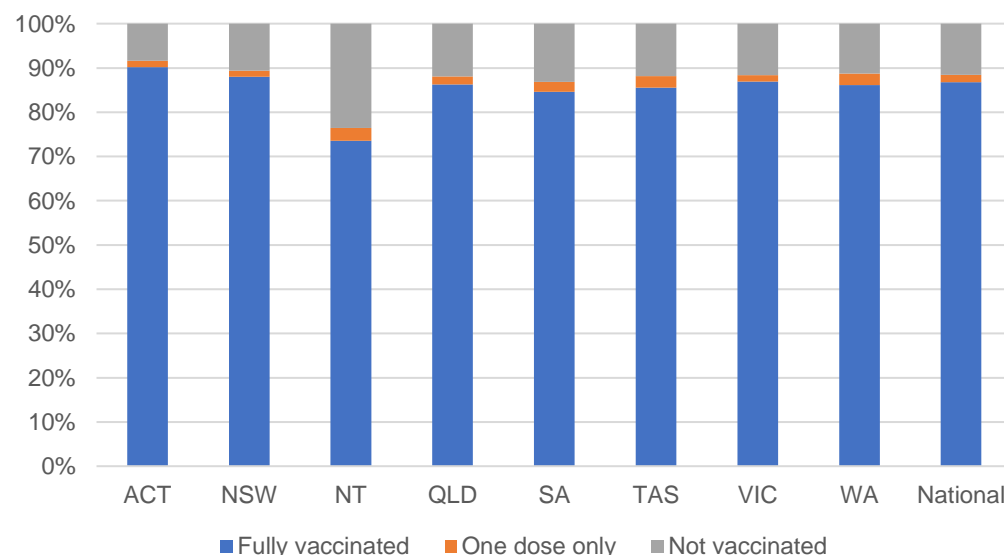
# National Disability Insurance Scheme (NDIS) reported vaccinations

Data as at:  
24 March 2022  
Updated Weekly

Australia's COVID-19  
Vaccine Roadmap

NATIONAL	Total people with at least one dose	People fully vaccinated	Total number of individuals in cohort	% People with at least one dose	% People fully vaccinated
NDIS participants living in disability accommodation	20,659	20,275	23,352	88.5%	86.8%

## NDIS participants in disability and aged care accommodation



Source: Linkage between National Disability Insurance Agency data and the Australian Immunisation Register. Includes participants residing in disability accommodation only.

Source: Total NDIS participant numbers as at 28th February. Participant data as at 23 March. Australian Immunisation Register data as at 23 March. Worker data as at 24 March.

## NDIS workforce vaccinations

	NDIS workers with at least one dose	NDIS workers fully vaccinated	% NDIS workers with at least one dose	% NDIS workers fully vaccinated
NSW	120,488	116,832	98.1%	95.1%
VIC	116,141	110,028	98.2%	93.1%
QLD	69,327	68,478	97.4%	96.3%
WA	32,724	30,401	98.5%	91.5%
SA	35,143	31,646	98.2%	88.4%
TAS	10,783	10,500	99.7%	97.1%
ACT	3,547	3,516	99.6%	98.8%
NT	3,403	3,253	97.6%	93.3%
<b>TOTAL</b>	<b>391,556</b>	<b>374,654</b>	<b>98.1%</b>	<b>93.9%</b>

Source: the NDIS Commission has established a requirement for registered NDIS providers who provide intensive disability support services to report on the vaccination status of workers they employ, or otherwise engage, to deliver NDIS-funded supports and services, and who are required to be vaccinated in accordance with in-force state and territory public health orders. The statistics reflect data reported to the NDIS Commission by registered NDIS providers and should be considered indicative and subject to change

Note: Some registered NDIS providers are yet to report on the vaccination status of their workforce. The NDIS Commission is working with those providers around reporting requirements.

Remaining workers not included include those exempt from vaccination requirements, workers whose vaccination status is not yet verified by the provider (such as workers on leave) and provider reporting anomalies.

# Residential aged care vaccination rollout

Australia's COVID-19  
Vaccine Roadmap

Data as at:  
24 Mar 2022  
Updated weekly

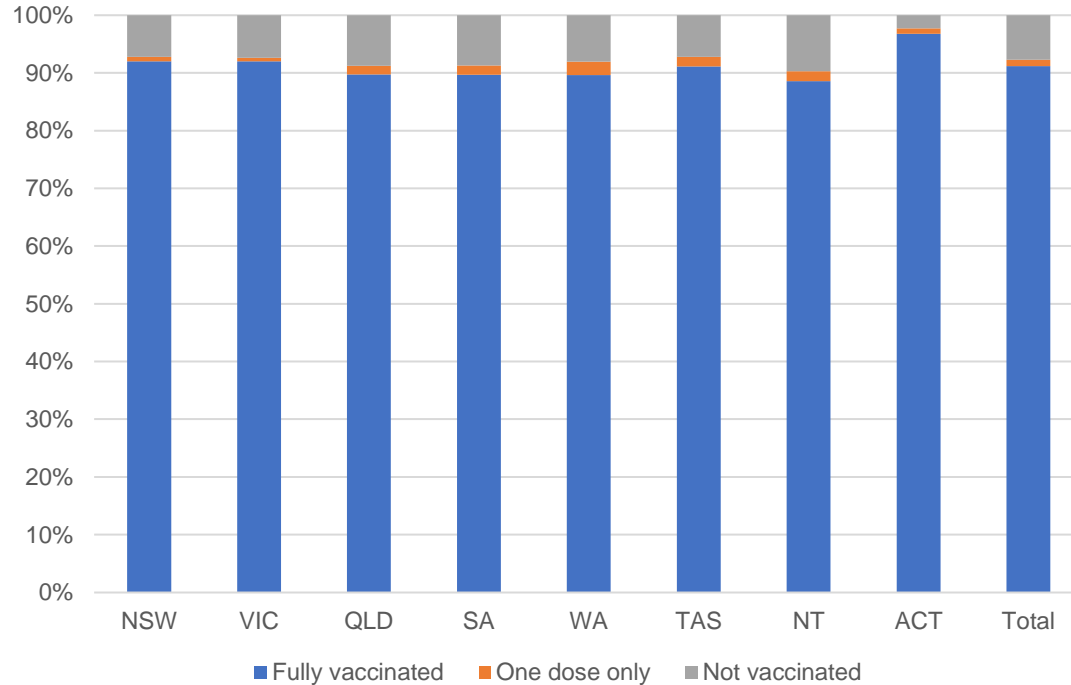
Residential aged care facilities status

**100%**  
Commonwealth facilities  
visited (2,537 planned sites)

**174,536**  
People fully vaccinated

**176,706**  
People with at least  
one dose

## Aged care resident vaccinations



## Aged care worker vaccinations

Jurisdictions	Total workers with at least one dose	Workers fully vaccinated	% Workers with at least one dose	% Workers fully vaccinated
NSW	78,130	78,121	98.7%	98.7%
VIC	66,398	66,397	96.9%	96.9%
QLD	48,462	48,455	98.7%	98.7%
SA	26,362	26,342	97.7%	97.6%
WA	23,583	23,580	98.1%	98.1%
TAS	7,676	7,676	100.0%	100.0%
NT	844	844	100.0%	100.0%
ACT	3,038	3,038	99.9%	99.9%
Total	254,493	254,453	98.1%	98.1%

Source: My Aged Care Portal vaccination progress

\*Status updates are provided by facilities at least once per week. Reporting is updated Monday to Friday to encompass different facility updates being made on different days.

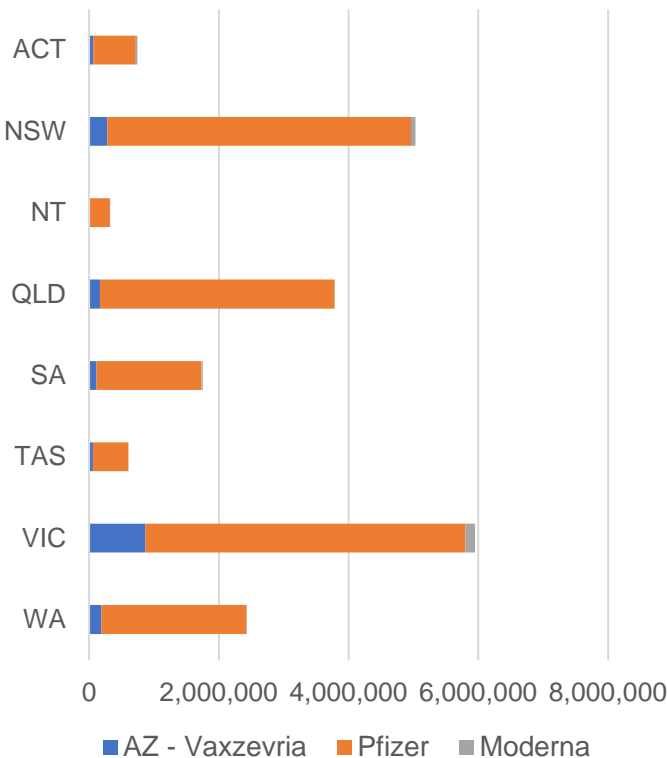
Data is sourced directly from Aged Care Service Providers and is not drawn or closely aligned with data from AIR due to inconsistencies and potential lags in uploading of records.



Data as at:  
24 Mar 2022

# Jurisdiction administered

Total vaccine doses administered in State and Territory clinics as at 24 March



**20,616,863** total vaccine doses administered  
in State and Territory clinics as at 24 March  
+ **18,558** recorded in the last 24 hours  
+ **148,333** recorded in the last 7 days

**NSW**  
**5,029,932**  
(+3,762 daily increase)

**VIC**  
**5,954,475**  
(+4,148 daily increase)

**QLD**  
**3,782,500**  
(+2,608 daily increase)

**WA**  
**2,426,995**  
(+2,834 daily increase)

**TAS**  
**605,264**  
(+258 daily increase)

**SA**  
**1,753,909**  
(+2,373 daily increase)

**ACT**  
**742,799**  
(+1,903 daily increase)

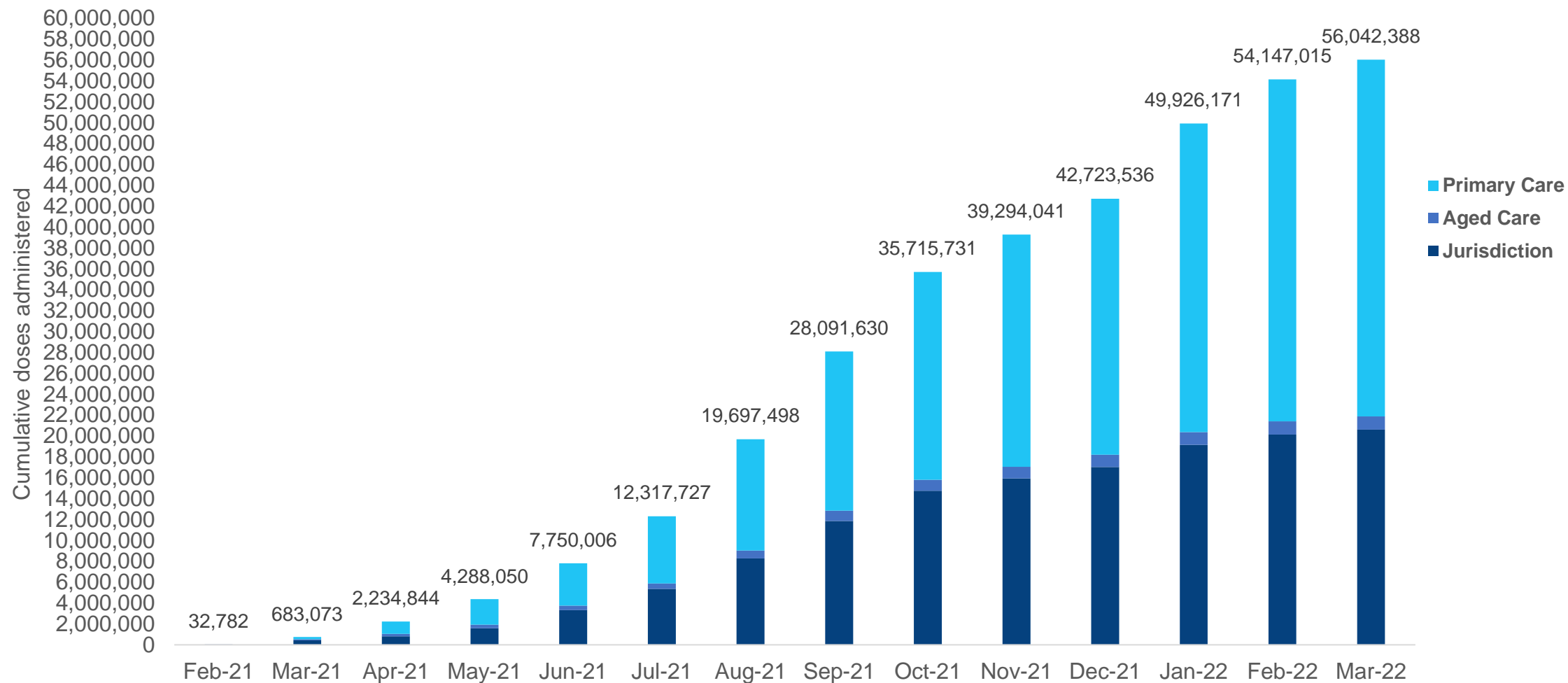
**NT**  
**320,989**  
(+672 daily increase)

\*Sourced from the Australian Immunisation Register. Numbers are calculated as difference in daily cumulative reported numbers to allow for historical corrections.

Source: Australian Immunisation Register

# Cumulative doses administered by channel

Data as at:  
24 Mar 2022



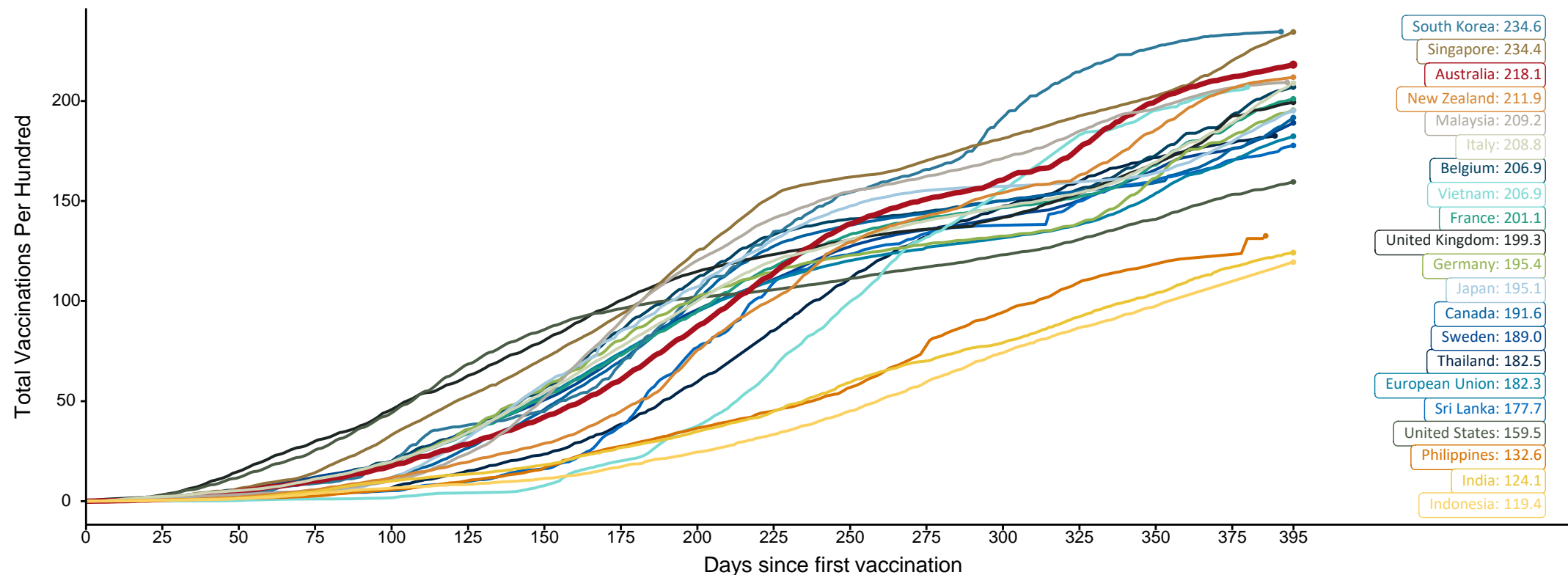
Source: Australian Immunisation Register

## Doses at equivalent stages of rollout (Day 395)

Data as at:  
24 Mar 2022

The x-axis is truncated at the length of Australia's vaccination program. Countries with intermittent reporting have had their doses per 100 imputed to Australia's current stage of rollout. Israel excluded as it is beyond scale of the graph

Cumulative doses administered (24 Mar): **56,042,388**



Note: From 11 January 2022, data for Australia includes all doses administered to people 5 and over. Prior to 11 January, data was for 12 and over.

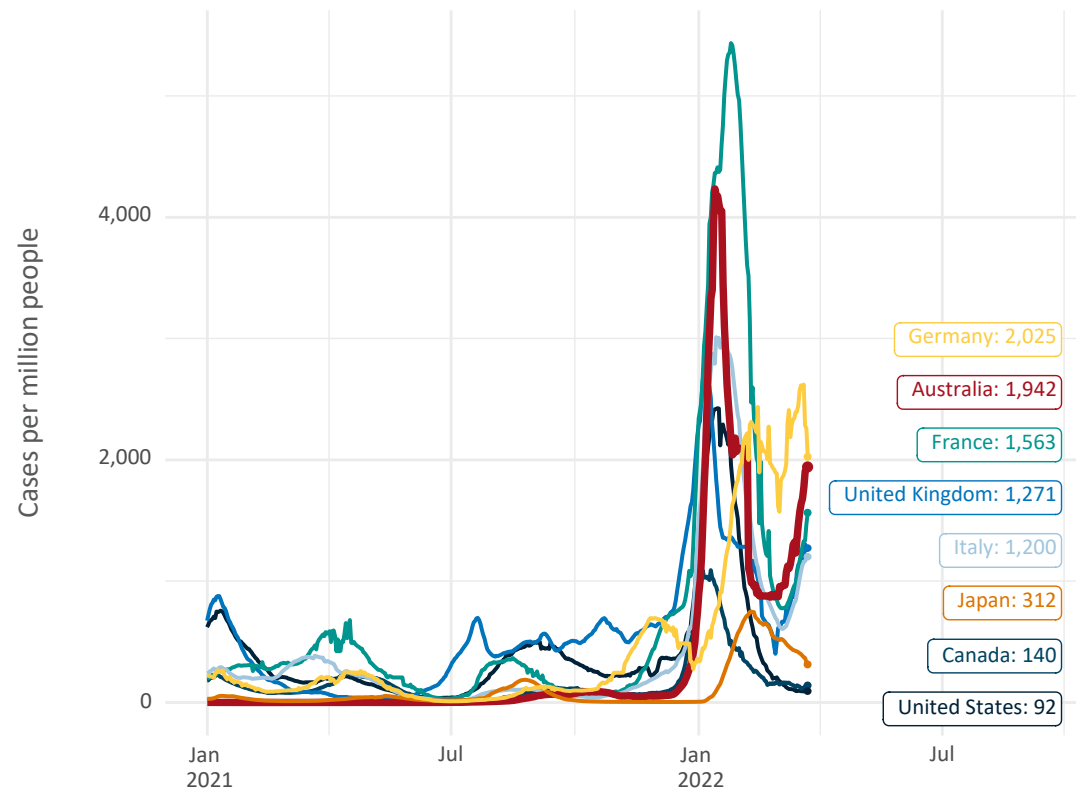
Source: Department of Health (Australia), Our World in Data (international)

Latest data: 24 March

# International data – COVID-19

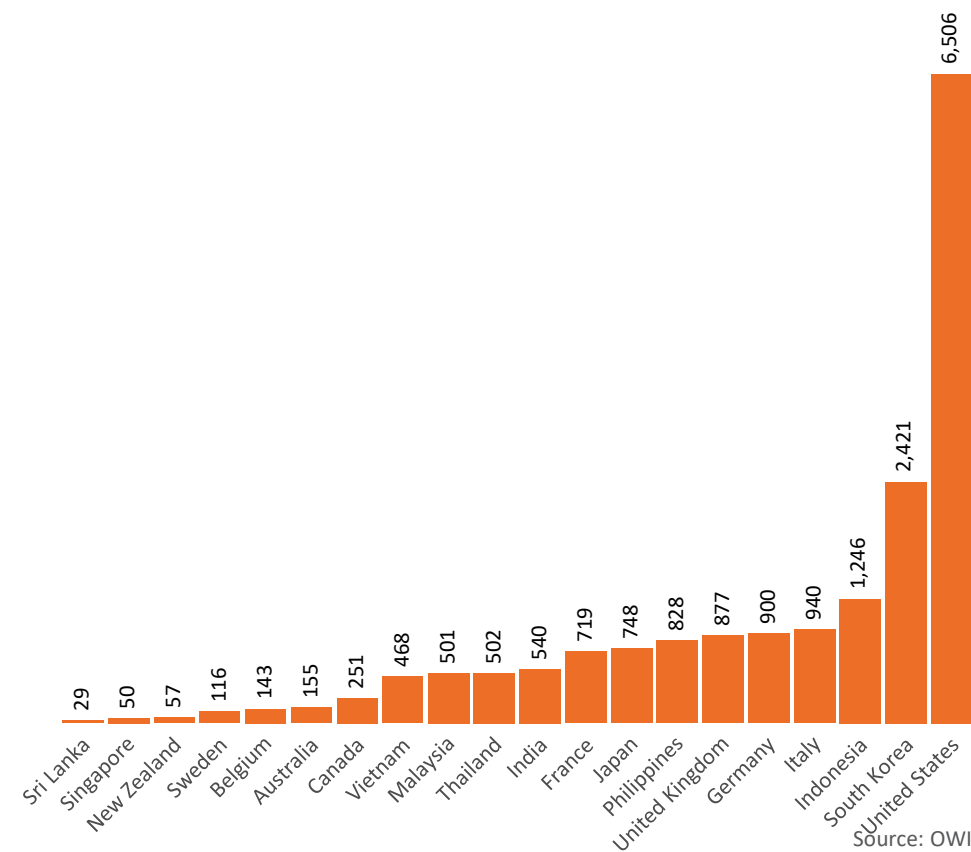
Data as at:  
24 Mar 2022

New daily cases per million in 2021, Australia and G7 countries  
Smoothed - 7 day average



Source: OWID  
Data downloaded: 25 Mar 2022 07:19  
Latest data: 23 Mar 2022

COVID-19 deaths in past 7 days - Australia and select countries



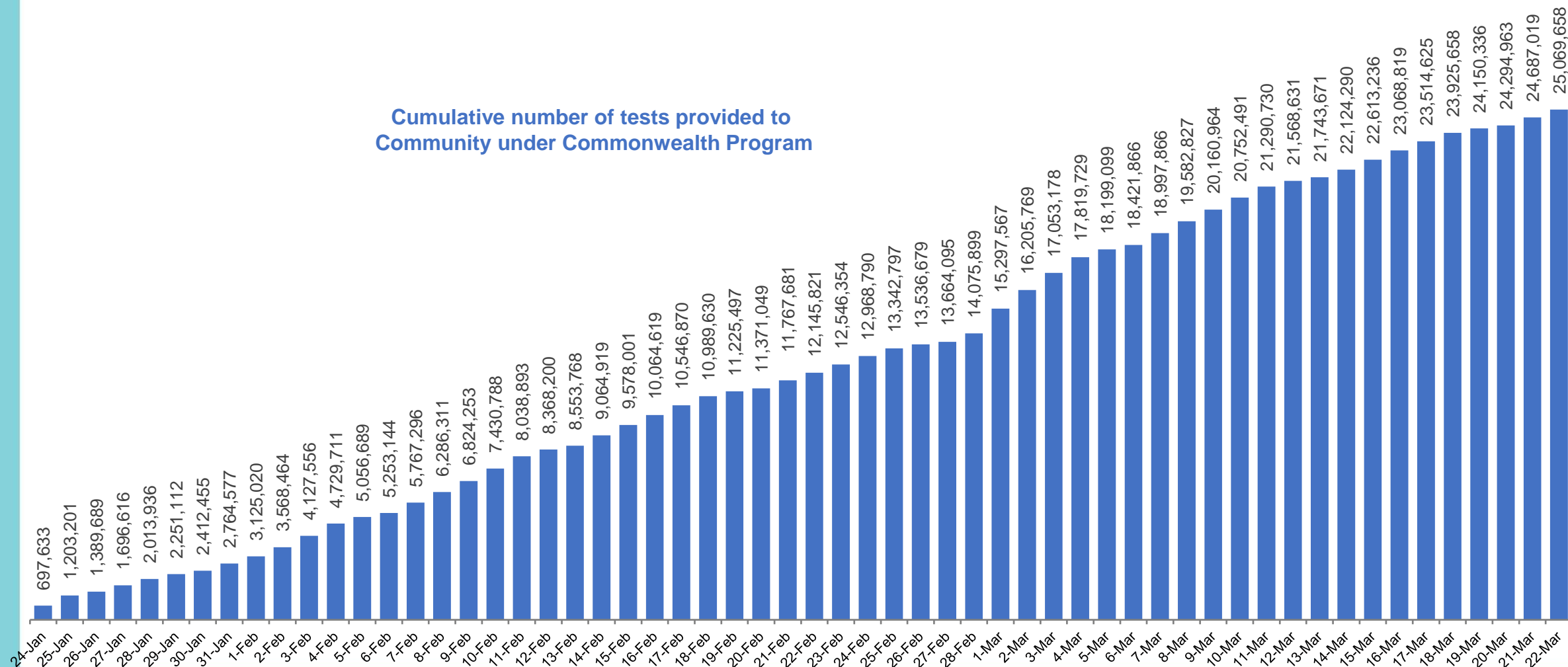
Source: OWID  
Data downloaded: 25 Mar 2022 07:19  
Latest data: 23 Mar 2022

Data as at:  
22 Mar 2022

# Concessional rapid antigen test program

**5,617 pharmacies** have delivered over **25 million rapid antigen tests** to more than **4m eligible concession card holders** under the Government's concessional rapid antigen test program.

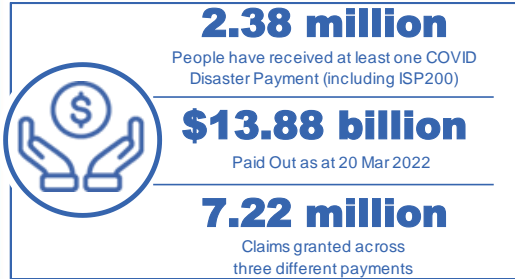
Cumulative number of tests provided to  
Community under Commonwealth Program



# Pandemic Response Payments

Australia's COVID-19  
Vaccine Roadmap

Data as at midnight: 20 Mar 2022  
Updated weekly



<b>COVID Disaster Payment:</b>	5.89 million claims received - 2.19 million individuals paid a total of \$12.59 billion.
<b>\$200 Income Support Payment:</b>	353,000 claims received - 183,000 individuals paid a total of \$268.9 million.
<b>Pandemic Leave Disaster Payment:</b>	1.46 million claims received - 907,000 individuals paid a total of \$1.02 billion.



## COVID Disaster Payment

assisting during a lockdown event in a Commonwealth hotspot.

## Income Support Payment \$200

for income support recipients who lost at least 8 hours of work.

## Pandemic Leave Disaster Payment

for those who have to self-isolate, quarantine or care.

For more information visit:  
[servicesaustralia.gov.au](https://servicesaustralia.gov.au)

## COVID-19 DISASTER PAYMENTS

### Northern Territory

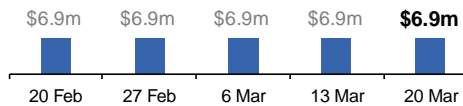
Lockdown (#3) from 16 Nov to 22 Nov  
Claiming period ended 27 Dec

**7,500 people have received at least one COVID Disaster Payment.**

**\$6.9m paid out as at 20 Mar 2022.**

**Nil paid in initial payments in the week ending 20 Mar 2022.**

Cumulative payments made by Territory since activation on 25 Aug 2021.



### Victoria

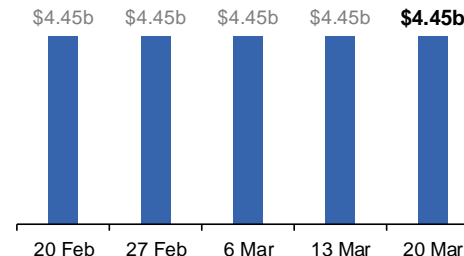
Lockdown (#6) from 6 Aug to 28 Oct  
Claiming period ended 9 Dec

**745,000 people have received at least one COVID Disaster Payment.**

**\$4.45b paid out as at 20 Mar 2022.**

**\$1,000 paid in initial and reoccurring payments in the week ending 20 Mar 2022.**

Cumulative payments made by State since activation on 8 Jun 2021.



### New South Wales

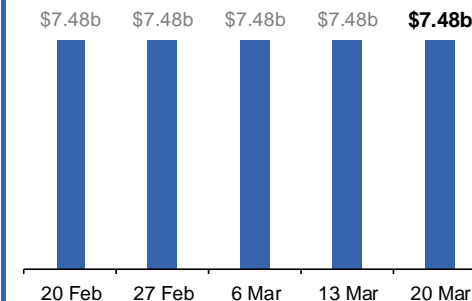
Lockdown from 24 Jun to 10 Oct  
Claiming period ended 27 Nov

**1.08m people have received at least one COVID Disaster Payment.**

**\$7.48b paid out as at 20 Mar 2022.**

**\$450 paid in initial and reoccurring payments in the week ending 20 Mar 2022.**

Cumulative payments made by State since activation on 1 Jul 2021.



### Australian Capital Territory

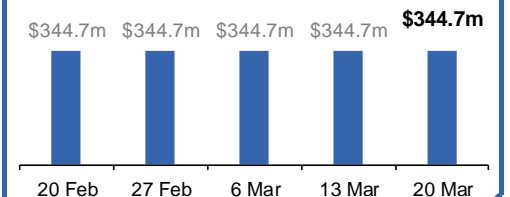
Lockdown from 12 Aug to 14 Oct  
Claiming period ended 25 Nov

**65,000 people have received at least one COVID Disaster Payment.**

**\$344.7m paid out as at 20 Mar 2022.**

**Nil paid in initial and reoccurring payments in the week ending 20 Mar 2022.**

Cumulative payments made by Territory since activation on 20 Aug 2021.



# Pandemic Response Payments (continued)

Data as at midnight: 20 Mar 2022  
Updated weekly

## COVID-19 DISASTER PAYMENTS

