



Australian Government
Operation COVID Shield

COVID-19 Vaccine Roll-out

23 March 2022

Data as at:
22 Mar 2022

Total vaccine doses



55,889,039 total vaccine doses administered nationally as at 22 March

+84,364 recorded in the last 24 hours



19,937,930

people have had at least one dose

>95%

of people over the age of 16 have had at least one dose



19,583,711

people are fully vaccinated

95.0%

of people over the age of 16 are fully vaccinated



12,588,827

people over the age of 16 who have received more than two doses

NSW
17,380,393
(+24,116 daily increase)

VIC
14,745,376
(+20,557 daily increase)

QLD
10,591,278
(+15,701 daily increase)

WA
6,092,037
(+11,696 daily increase)

TAS
1,252,101
(+2,287 daily increase)

SA
3,844,641
(+5,867 daily increase)

ACT
1,438,292
(+3,210 daily increase)

NT
544,921
(+930 daily increase)

*Administration state breakdown indicates state in which a vaccine was administered

**Overall dose count includes instances of more than three doses per person in a small number of cases.

Booster Vaccinations

Data as at: 22 Mar 2022



182,309
Indigenous people who have received more than two doses
50.1%
of eligible population (364,157)



161,209
Aged Care Residents who have received more than two doses##
93.0%
of eligible population (173,399)



169,239 NDIS participants | **20,287** NDIS residents
who have received more than two doses#
71.1% of eligible population (238,000) | **86.2%** of eligible population (23,000)



12,588,827 total people who have received more than two doses nationally
+45,791 recorded in the last 24 hours
66.7% of people who are eligible (18,885,739) have received more than two doses

NSW	People	% of Eligible
Cumulative	3,862,172	62.7%
Daily increase	12,870	

VIC	People	% of Eligible
Cumulative	3,414,264	68.1%
Daily increase	11,063	

QLD	People	% of Eligible
Cumulative	2,171,905	61.1%
Daily increase	8,934	

WA	People	% of Eligible
Cumulative	1,512,891	85.2%
Daily increase	6,549	

SA	People	% of Eligible
Cumulative	890,126	70.3%
Daily increase	3,100	

TAS	People	% of Eligible
Cumulative	282,900	69.1%
Daily increase	1,585	

ACT	People	% of Eligible
Cumulative	254,030	74.0%
Daily increase	722	

NT	People	% of Eligible
Cumulative	105,830	66.3%
Daily increase	456	

94,709

doses administered to persons residing in other territories or with missing residential information

*People may belong to multiple groups and could be represented in the above breakdowns multiple times.
Aged Care Residents data as at 22 March 2022. # NDIS participants data as at 21 March 2022.

Source: Australian Immunisation Register

Data as at:
22 Mar 2022

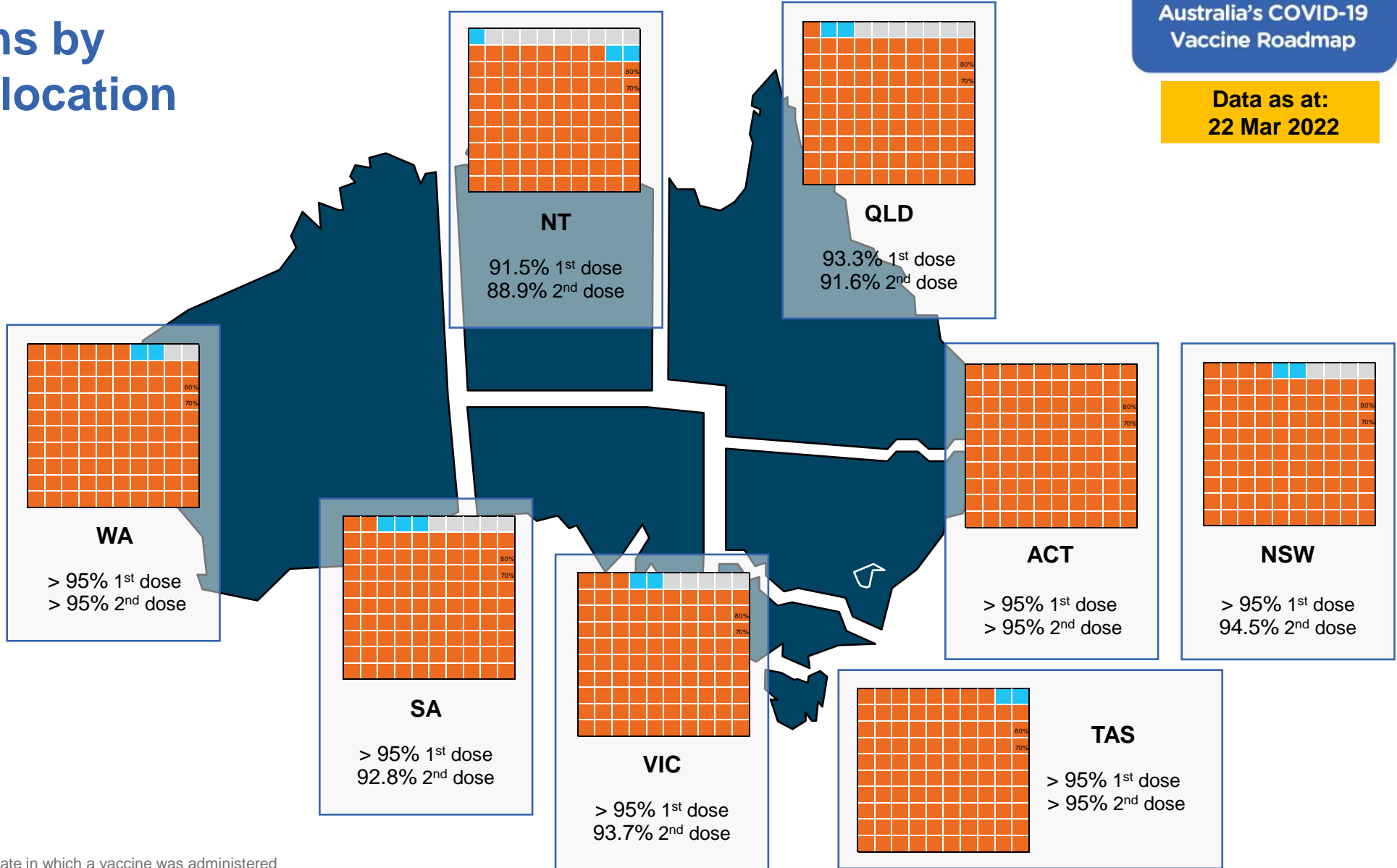
Vaccinations by residential location

First doses

Age	Today	4 weeks ago	8 weeks ago
16+	>95%	>95%	>95%
50+	>95%	>95%	>95%
70+	>95%	>95%	>95%

Fully vaccinated

Age	Today	4 weeks ago	8 weeks ago
16+	95.0%	94.5%	93.5%
50+	>95%	>95%	>95%
70+	>95%	>95%	>95%



*Residential state may differ from the state in which a vaccine was administered

Commonwealth and Jurisdiction vaccine doses administered

Data as at:
22 Mar 2022



55,889,039 total vaccine doses administered nationally as at 22 March

+ 84,364 recorded in the last 24 hours

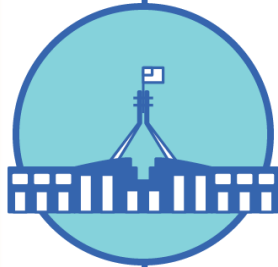


20,580,545

doses administered by state and territory facilities

+ 17,992

recorded in the last 24 hours



35,308,494

doses administered by commonwealth facilities

+ 66,372

recorded in the last 24 hours

34,046,038 total vaccine doses administered in primary care settings

1,262,456 total vaccine doses administered in aged care and disability settings

NSW	Jurisdictions	Commonwealth
Cumulative	5,023,601	12,356,792
Daily increase	2,975	21,141

VIC	Jurisdictions	Commonwealth
Cumulative	5,945,737	8,799,639
Daily increase	4,442	16,115

QLD	Jurisdictions	Commonwealth
Cumulative	3,777,205	6,814,073
Daily increase	2,840	12,861

WA	Jurisdictions	Commonwealth
Cumulative	2,421,714	3,670,323
Daily increase	2,680	9,016

TAS	Jurisdictions	Commonwealth
Cumulative	603,931	648,170
Daily increase	566	1,721

SA	Jurisdictions	Commonwealth
Cumulative	1,749,580	2,095,061
Daily increase	1,863	4,004

ACT	Jurisdictions	Commonwealth
Cumulative	739,051	699,241
Daily increase	2,118	1,092

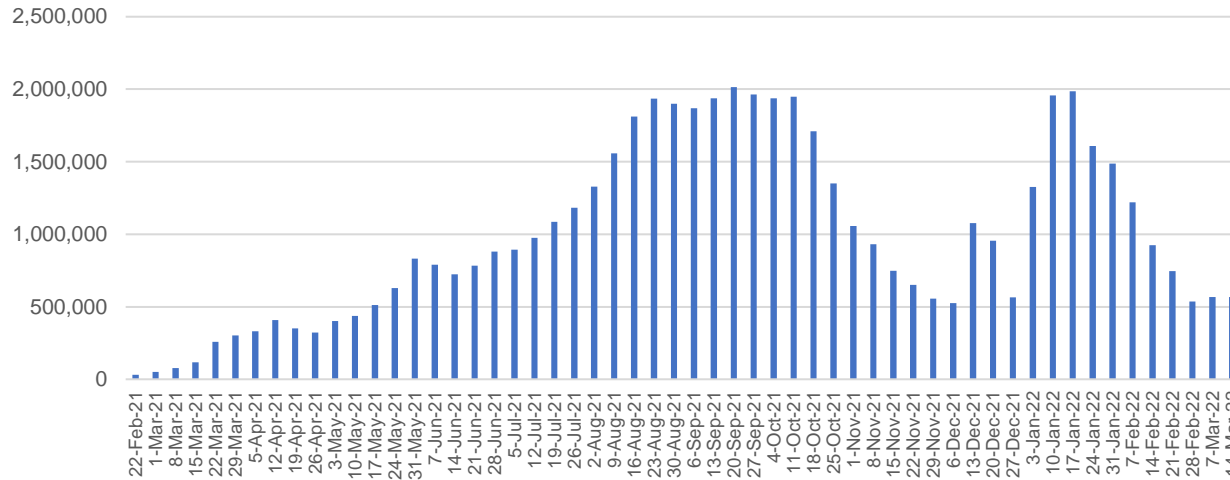
NT	Jurisdictions	Commonwealth
Cumulative	319,726	225,195
Daily increase	508	422

Vaccine milestone charts

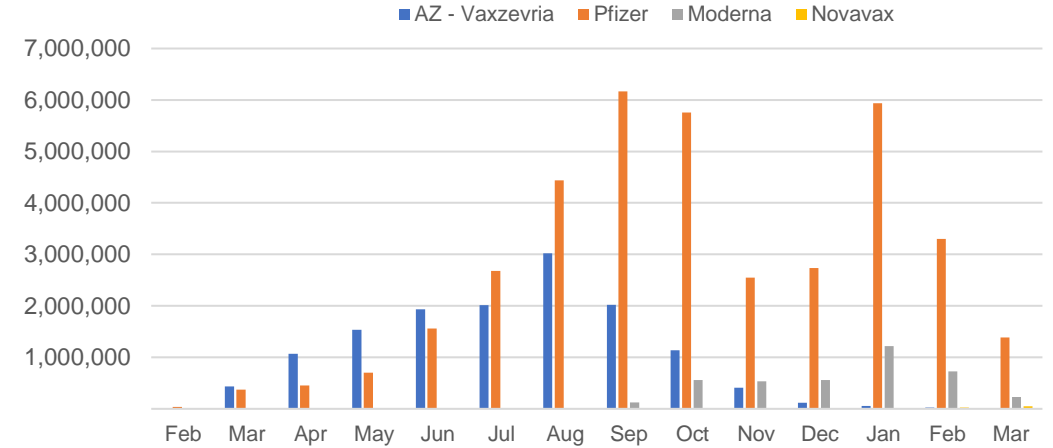
Data as at:
22 Mar 2022

Australia's COVID-19
Vaccine Roadmap

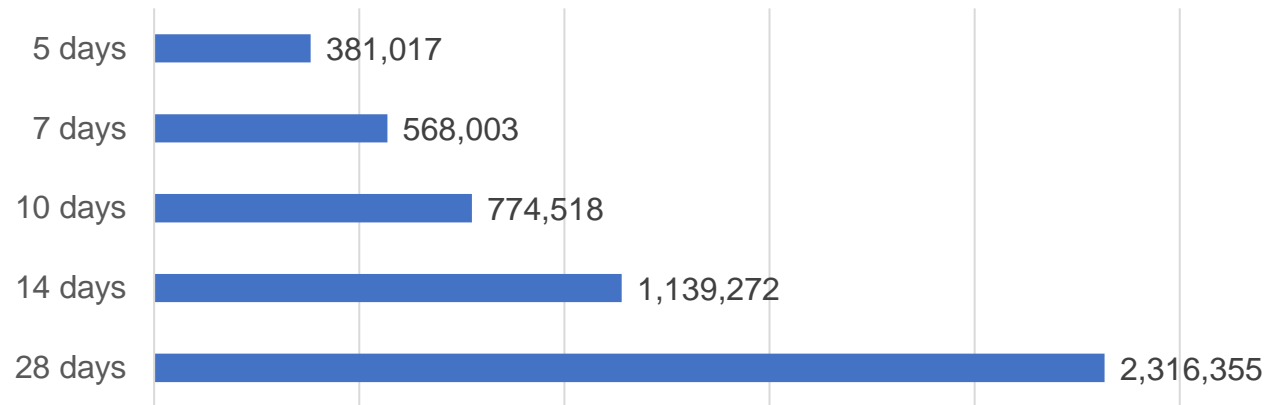
Doses Administered by Week



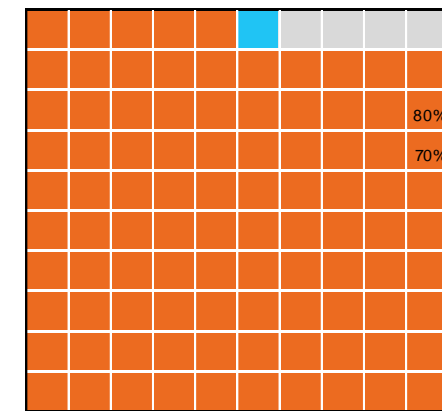
Doses by administration month and vaccine type



Doses Reported



Eligible population percentage coverage



*Each square represents 1% of the national population. Squares are filled as milestones are achieved.

*Sourced from the Australian Immunisation Register.

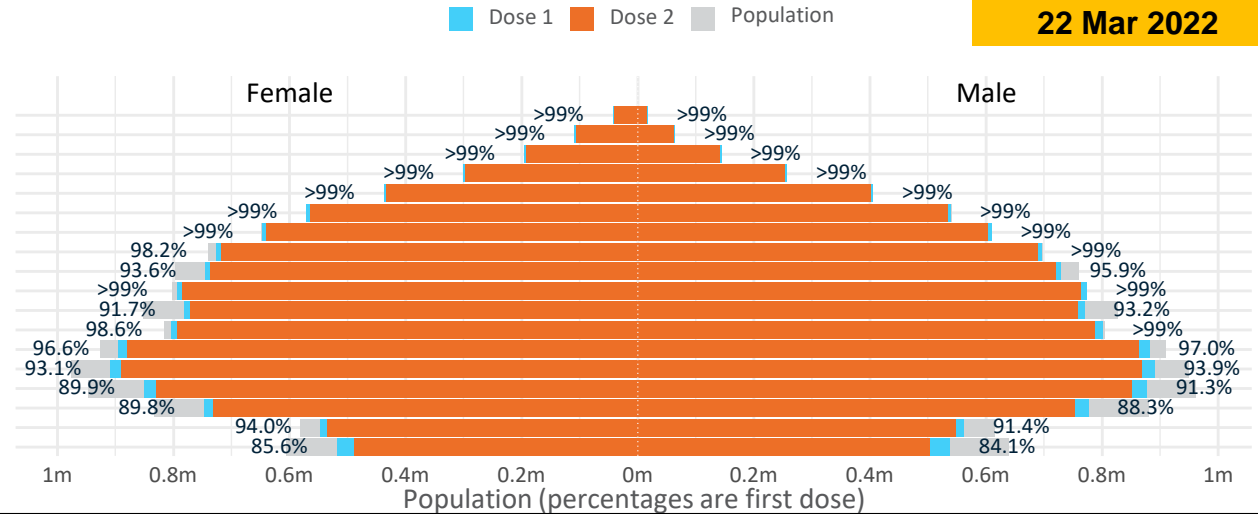
Doses by age and sex

First and second doses by age and sex

	16+	50+	12-15	5-11
Dose 1	96.69% (19,937,930 doses / 20,619,959 people)	>99% (8,812,006 doses / 8,749,703 people)	84.91% (1,056,213 doses / 1,243,990 people)	51.83% (1,179,944 doses / 2,276,638 people)
Dose 2	94.97% (19,583,711 doses / 20,619,959 people)	>99% (8,698,975 doses / 8,749,703 people)	79.70% (991,480 doses / 1,243,990 people)	19.55% (444,989 doses / 2,276,638 people)

**Data as at:
22 Mar 2022**

Age	Dose 1	Dose 2
95+	59,886 (>99%)	56,479 (>99%)
90-94	174,191 (>99%)	168,338 (>99%)
85-89	339,556 (>99%)	332,181 (>99%)
80-84	558,326 (>99%)	550,542 (>99%)
75-79	843,381 (>99%)	834,440 (>99%)
70-74	1,111,123 (>99%)	1,099,646 (>99%)
65-69	1,257,768 (>99%)	1,242,921 (98.8%)
60-64	1,424,029 (>99%)	1,406,924 (97.9%)
55-59	1,474,767 (94.8%)	1,457,162 (93.7%)
50-54	1,568,979 (>99%)	1,550,342 (>99%)
45-49	1,551,822 (92.6%)	1,531,188 (91.3%)
40-44	1,608,332 (>99%)	1,581,969 (97.6%)
35-39	1,780,979 (97.1%)	1,746,631 (95.2%)
30-34	1,807,199 (93.9%)	1,763,200 (91.7%)
25-29	1,738,189 (91.2%)	1,689,243 (88.6%)
20-24	1,530,267 (89.4%)	1,489,493 (87.0%)
16-19	1,109,136 (92.8%)	1,083,012 (90.6%)
12-15	1,056,213 (84.9%)	991,480 (79.7%)



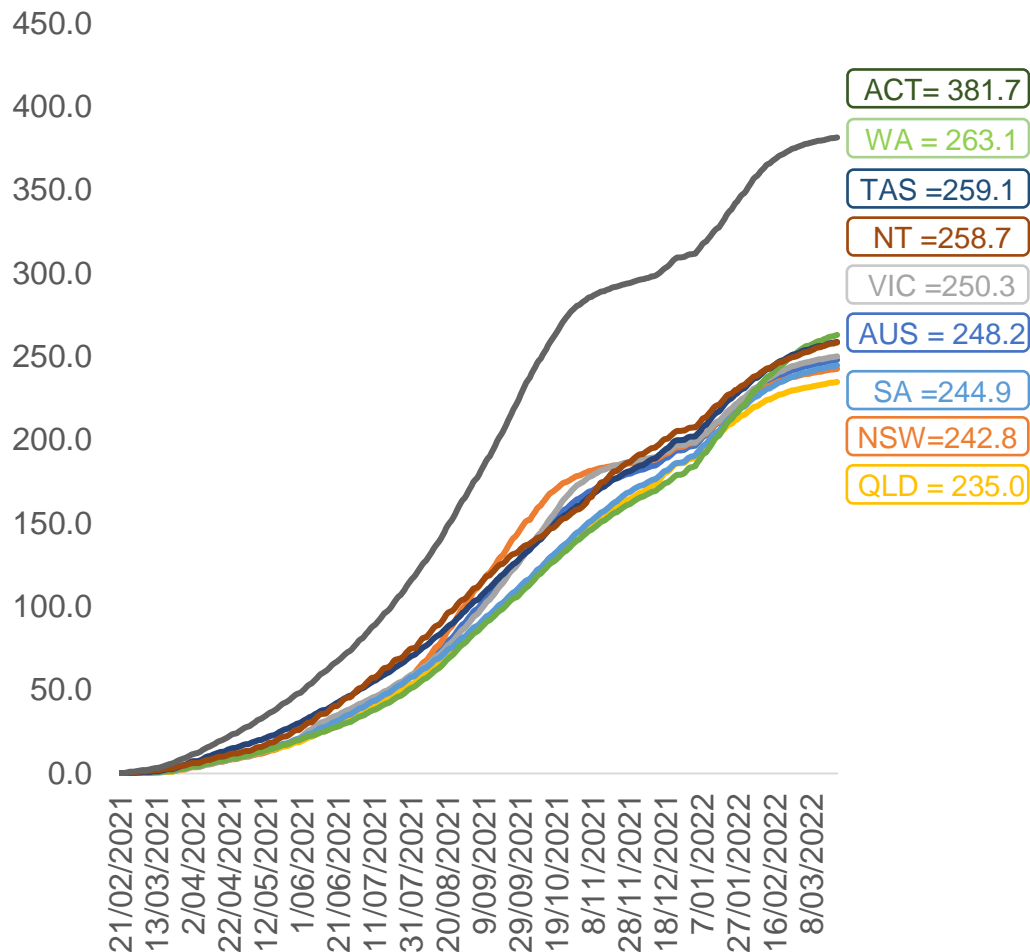
	AUS	ACT	NSW	NT	QLD	SA	TAS	VIC	WA
16 and over - dose 1	19,937,930	351,369	6,301,826	174,437	3,838,578	1,368,853	443,087	5,142,269	2,081,974
16 and over - dose 2	19,583,711	345,969	6,206,658	169,502	3,765,976	1,336,147	433,272	5,065,839	2,041,576
16 and over - population	20,619,959*	344,037	6,565,651	190,571	4,112,707	1,440,400	440,172	5,407,574	2,114,978
16 and over % with dose 1	96.69%	>99%	95.98%	91.53%	93.33%	95.03%	>99%	95.09%	98.44%
16 and over % with dose 2	94.97%	>99%	94.53%	88.94%	91.57%	92.76%	98.43%	93.68%	96.53%
5 to 11 - dose 1	1,179,944	31,606	351,091	13,007	206,931	83,399	28,316	322,233	136,122
5 to 11 - dose 2	444,989	15,352	140,438	4,181	81,431	31,377	14,196	116,238	39,872
5 to 11 - population	2,276,638	39,789	716,460	24,750	478,731	148,816	45,033	578,499	244,154
5 to 11 % with dose 1	51.83%	79.43%	49.00%	52.55%	43.22%	56.04%	62.88%	55.70%	55.75%
5 to 11 % with dose 2	19.55%	38.58%	19.60%	16.89%	17.01%	21.08%	31.52%	20.09%	16.33%
12 to 15 - dose 1	1,056,213	20,077	325,883	10,900	207,607	68,458	22,903	276,165	115,091
12 to 15 - dose 2	991,480	19,291	309,549	9,719	192,945	64,199	21,597	262,246	104,048
12 to 15 - population	1,243,990	19,693	390,330	13,060	270,146	82,747	26,308	308,611	132,869
12 to 15 % with dose 1	84.91%	>99%	83.49%	83.46%	76.85%	82.73%	87.06%	89.49%	86.62%
12 to 15 % with dose 2	79.70%	97.96%	79.30%	74.42%	71.42%	77.58%	82.09%	84.98%	78.31%

*National population will not equal sum of listed jurisdictions due to a small number of people counted in national population residing in some 'other' territories. Sum of state doses will not add to national total as some records are unable to be geocoded to a State or Territory.
Doses sourced from Australian Immunisation Register, population from ABS ERP June 2020

Data as at:
22 Mar 2022

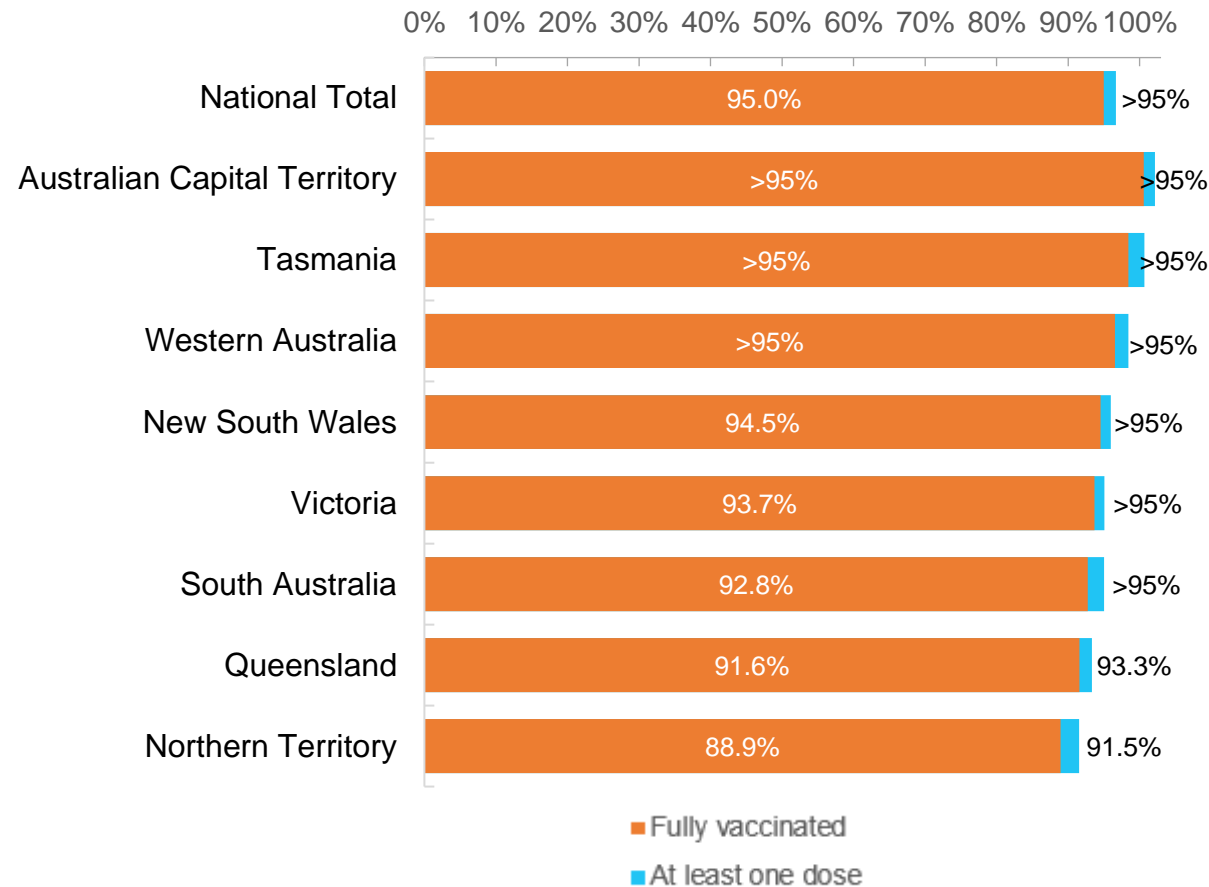
Vaccinations by location

Cumulative total doses administered vs eligible state populations*



*Not an indication of percentage vaccinated, numbers will exceed 100 due to multiple doses required per person of the population. All doses are included for those aged 12 and above, and are based on vaccination provider location.

First and Second Doses by residential location



Aboriginal and Torres Strait Islander peoples

Number of people vaccinated

Data as at:
22 Mar 2022
Updated weekly

Australia's COVID-19
Vaccine Roadmap



435,465

people over the age of 16
have had at least one dose

84.0%

of people over the age of 16
have had at least one dose



413,329

people over the age of 16
are fully vaccinated

79.7%

of people over the age of 16 are
fully vaccinated



People aged 12 – 15 years

48,488

42,163

68.3%

59.4%

At least one dose

Fully vaccinated

178 Aboriginal community controlled health services (ACCHS)

0#	50	27	44	12	3	21	21
ACT	NSW	NT	QLD	SA	TAS	VIC	WA

Medicare Address State ^{##}	Individuals Dose 1	Individuals Dose 1 %	Individuals Dose 2	Individuals Dose 2 %
Australian Capital Territory	4,826	91.2%	4,705	88.9%
New South Wales	134,554	86.6%	131,266	84.5%
Northern Territory	42,190	89.2%	39,740	84.0%
Queensland	114,999	81.0%	108,745	76.6%
South Australia	19,741	79.4%	18,169	73.1%
Tasmania	13,896	88.4%	13,429	85.4%
Victoria	35,245	89.6%	34,372	87.4%
Western Australia	53,111	84.8%	47,861	76.4%
Unknown/Other Territories	16,903	65.2%	15,042	58.0%
Totals	435,465	84.0%	413,329	79.7%

Source: Australian Immunisation Register

*Identifying as Aboriginal and Torres Strait Islander is optional and the estimated population may be under reported.

**Includes all Aboriginal and Torres Strait Islander peoples who have received a vaccination, not limited to those administered in an ACCHS setting

#ACCHS in the ACT are currently operating as a Commonwealth Vaccine Clinics so not included to avoid double counting

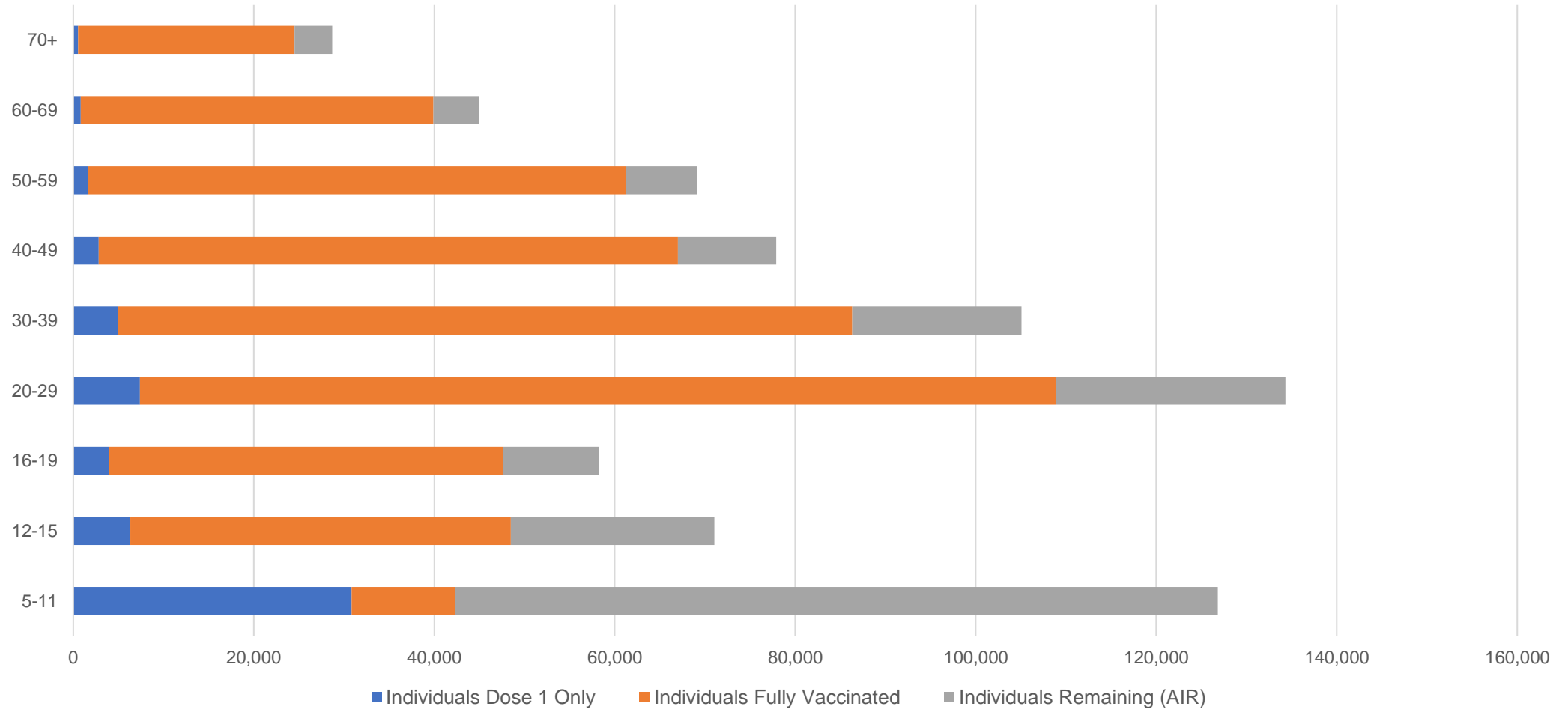
##The above table includes all identified Aboriginal and Torres Strait Islander people who are aged 16 and above by their state of residence.

Aboriginal and Torres Strait Islander peoples

Number of people vaccinated by age

Data as at:
22 Mar 2022
Updated weekly

Australia's COVID-19
Vaccine Roadmap



Source: Australian Immunisation Register

Commonwealth primary care

Data as at:
22 Mar 2022

Australia's COVID-19
Vaccine Roadmap



Primary care vaccine administration sites

5,793	128	178	3,587
GPs	CVCs	ACCHS	Pharmacies



34,046,038 total vaccine doses administered
primary care settings as at 22 March
+ 66,010 recorded in the last 24 hours

Primary care vaccinations by provider type

	Doses administered	Daily increase	7 day increase
General Practice* includes other Commonwealth	27,602,889	44,534	273,133
Pharmacy	6,443,149	21,476	136,996



264,912

doses administered to persons
residing in other territories or with
missing residential information

*General practice includes Commonwealth Vaccination Clinics, Aboriginal Community Health Centres, Royal Flying Doctor Service and other Commonwealth vaccination facilities

Source: Australian Immunisation Register

Commonwealth aged care and disability doses administered

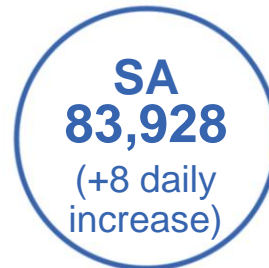
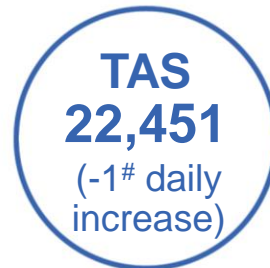
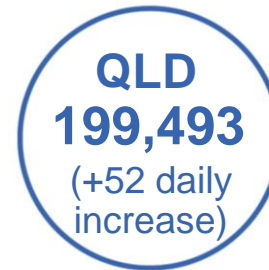
Data as at:
22 Mar 2022



1,262,456 (+ 362 last 24 hours)

Total vaccine doses administered in aged care and disability facilities as at 22 March

Number of doses administered as part of the Commonwealth aged and disability care rollout



34,037

doses administered to persons residing in other territories or with missing residential information

Source: Australian Immunisation Register

*Sourced from the Australian Immunisation Register. Includes all persons vaccinated at participating residential aged care, disability and related industry settings.

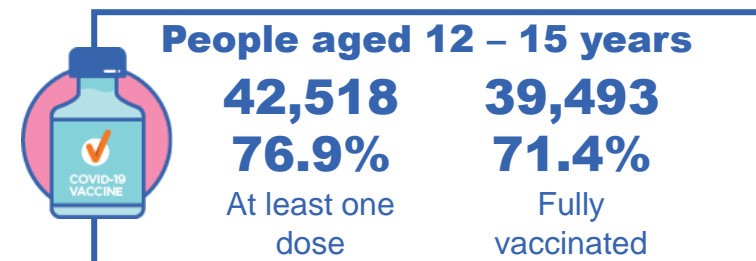
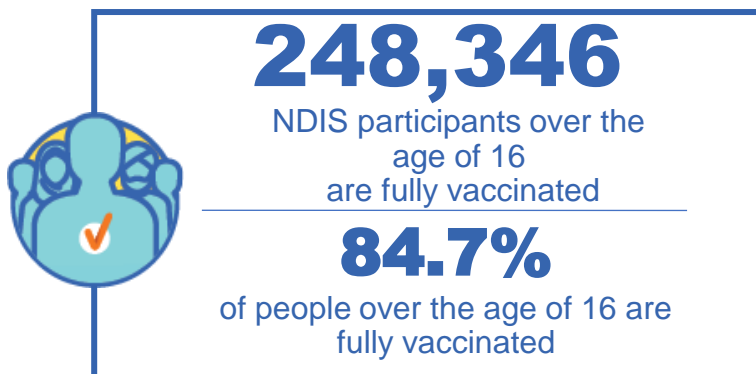
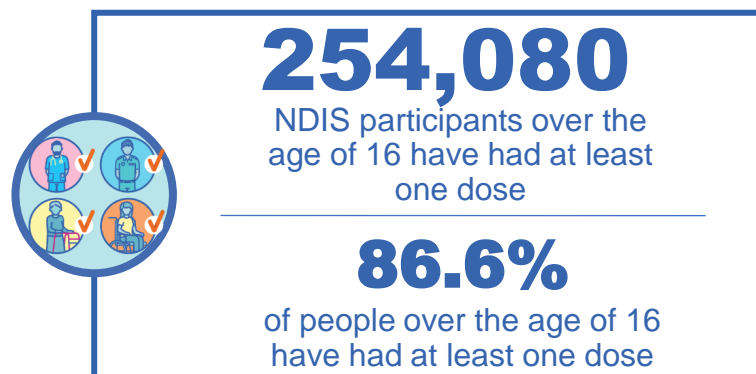
**State level breakdown indicates the residential location and may not align to the state in which the vaccination occurred.

Numbers are calculated as difference in daily cumulative reported numbers to allow for historical corrections in all data sources. This can occasionally result in negative numbers, such as for TAS and ACT, where historical details about doses have been updated.

National Disability Insurance Scheme (NDIS) reported vaccinations

Data as at:
17 March 2022
Updated weekly

Australia's COVID-19
Vaccine Roadmap



NDIS participant vaccinations

	People aged 16+ with at least one dose	People aged 16+ fully vaccinated	% People aged 16+ with at least one dose	% People aged 16+ fully vaccinated
ACT	4,816	4,745	88.8%	87.5%
NSW	78,269	76,929	87.2%	85.7%
NT	2,203	2,114	77.2%	74.1%
QLD	49,949	48,746	84.9%	82.9%
SA	20,683	20,050	84.3%	81.7%
TAS	6,366	6,176	86.6%	84.0%
VIC	67,692	66,368	87.9%	86.2%
WA	24,102	23,218	87.6%	84.3%
National	254,080	248,346	86.6%	84.7%

Source: Linkage between National Disability Insurance Agency data and the Australian Immunisation Register. Total NDIS participant numbers as at 28th February. Australian Immunisation Register data as at 16 March. Includes all participants regardless of residence type.

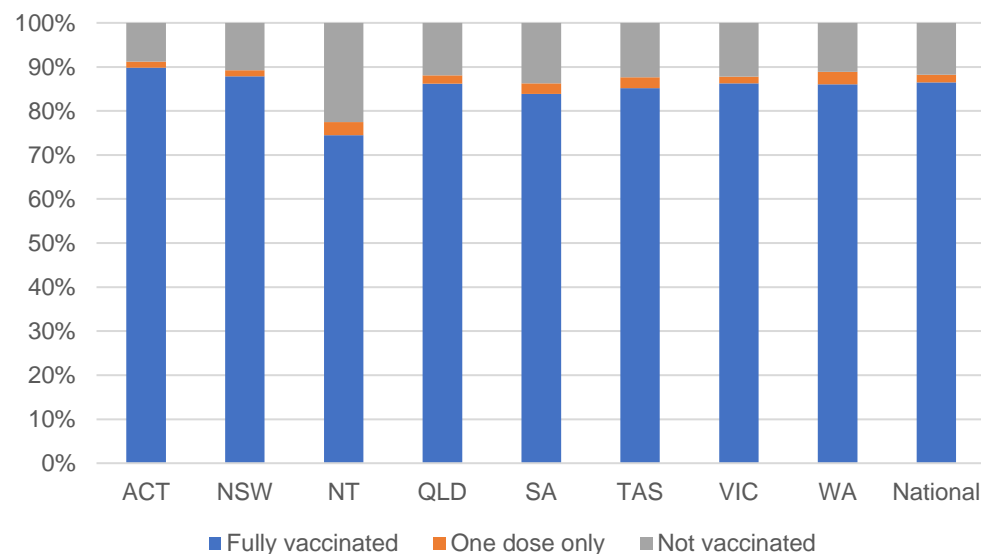
National Disability Insurance Scheme (NDIS) reported vaccinations

Data as at:
17 March 2022
Updated Weekly

Australia's COVID-19
Vaccine Roadmap

NATIONAL	Total people with at least one dose	People fully vaccinated	Total number of individuals in cohort	% People with at least one dose	% People fully vaccinated
NDIS participants living in disability accommodation	20,594	20,201	23,352	88.2%	86.5%

NDIS participants in disability and aged care accommodation



Source: Linkage between National Disability Insurance Agency data and the Australian Immunisation Register. Includes participants residing in disability accommodation only.
Source: Total NDIS participant numbers as at 28th February. Participant data as at 16 March. Australian Immunisation Register data as at 16 March. Worker data as at 17 March.

NDIS workforce vaccinations

	NDIS workers with at least one dose	NDIS workers fully vaccinated	% NDIS workers with at least one dose	% NDIS workers fully vaccinated
NSW	120,409	117,272	98.1%	95.5%
VIC	116,047	109,512	98.3%	92.7%
QLD	69,192	68,334	97.4%	96.2%
WA	32,695	30,144	98.5%	90.8%
SA	35,081	31,596	98.2%	88.4%
TAS	10,794	10,495	99.7%	96.9%
ACT	3,550	3,519	99.6%	98.8%
NT	3,477	3,353	99.7%	96.1%
TOTAL	391,245	374,225	98.1%	93.9%

Source: the NDIS Commission has established a requirement for registered NDIS providers who provide intensive disability support services to report on the vaccination status of workers they employ, or otherwise engage, to deliver NDIS-funded supports and services, and who are required to be vaccinated in accordance with in-force state and territory public health orders. The statistics reflect data reported to the NDIS Commission by registered NDIS providers and should be considered indicative and subject to change

Note: Some registered NDIS providers are yet to report on the vaccination status of their workforce. The NDIS Commission is working with those providers around reporting requirements.

Remaining workers not included include those exempt from vaccination requirements, workers whose vaccination status is not yet verified by the provider (such as workers on leave) and provider reporting anomalies.

Residential aged care vaccination rollout

Residential aged care facilities status

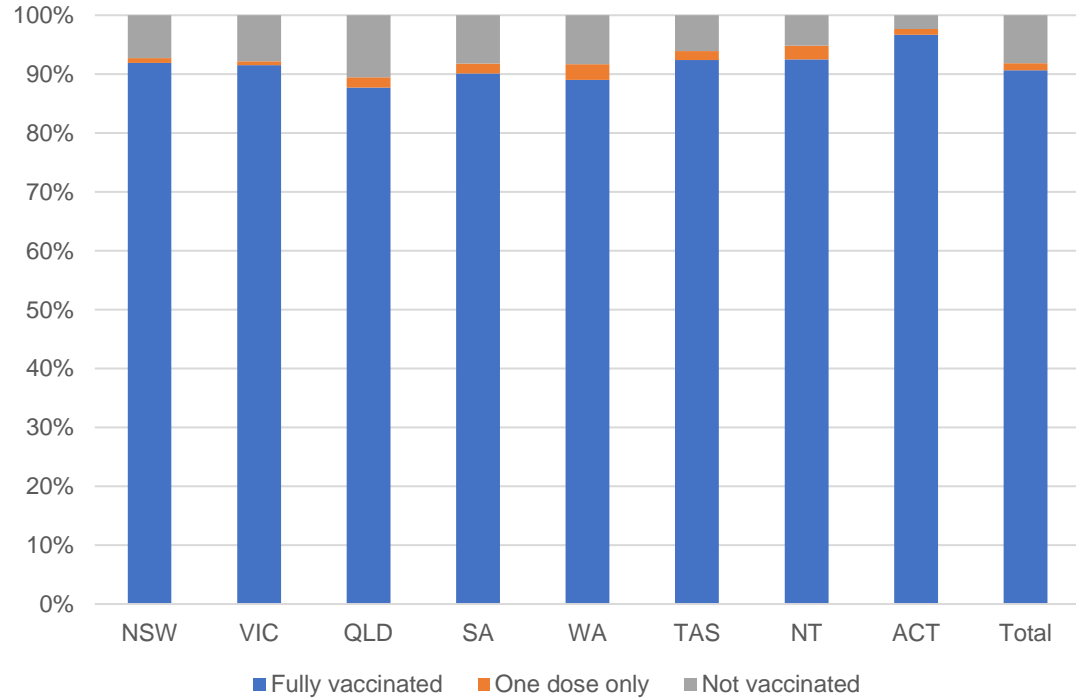
100%
Commonwealth facilities visited (2,537 planned sites)

173,424
People fully vaccinated

175,751
People with at least one dose

Data as at:
17 Mar 2022
Updated weekly

Aged care resident vaccinations



Aged care worker vaccinations

Jurisdictions	Total workers with at least one dose	Workers fully vaccinated	% Workers with at least one dose	% Workers fully vaccinated
NSW	78,141	78,131	96.7%	96.7%
VIC	66,947	66,946	97.3%	97.3%
QLD	48,022	48,015	97.8%	97.8%
SA	26,506	26,479	97.7%	97.6%
WA	23,931	23,926	99.7%	99.6%
TAS	7,773	7,773	100.0%	100.0%
NT	833	833	100.0%	100.0%
ACT	3,061	3,061	100.0%	100.0%
Total	255,214	255,164	97.6%	97.6%

Source: My Aged Care Portal vaccination progress

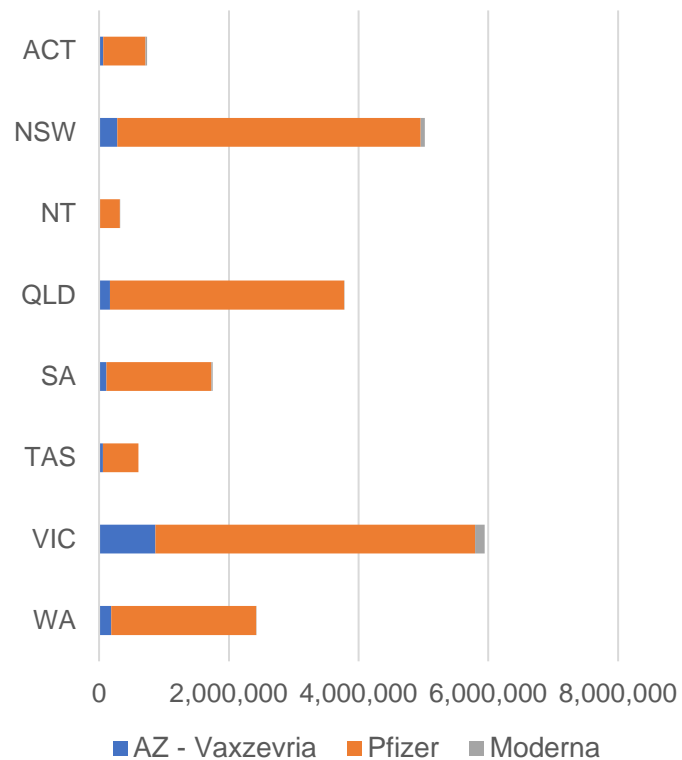
*Status updates are provided by facilities at least once per week. Reporting is updated Monday to Friday to encompass different facility updates being made on different days.

Data is sourced directly from Aged Care Service Providers and is not drawn or closely aligned with data from AIR due to inconsistencies and potential lags in uploading of records.

Data as at:
22 Mar 2022

Jurisdiction administered

Total vaccine doses administered in State and Territory clinics as at 22 March



20,580,545 total vaccine doses administered in State and Territory clinics as at 22 March
 + **17,992** recorded in the last 24 hours
 + **155,229** recorded in the last 7 days

NSW
5,023,601
 (+2,975 daily increase)

VIC
5,945,737
 (+4,442 daily increase)

QLD
3,777,205
 (+2,840 daily increase)

WA
2,421,714
 (+2,680 daily increase)

TAS
603,931
 (+566 daily increase)

SA
1,749,580
 (+1,863 daily increase)

ACT
739,051
 (+2,118 daily increase)

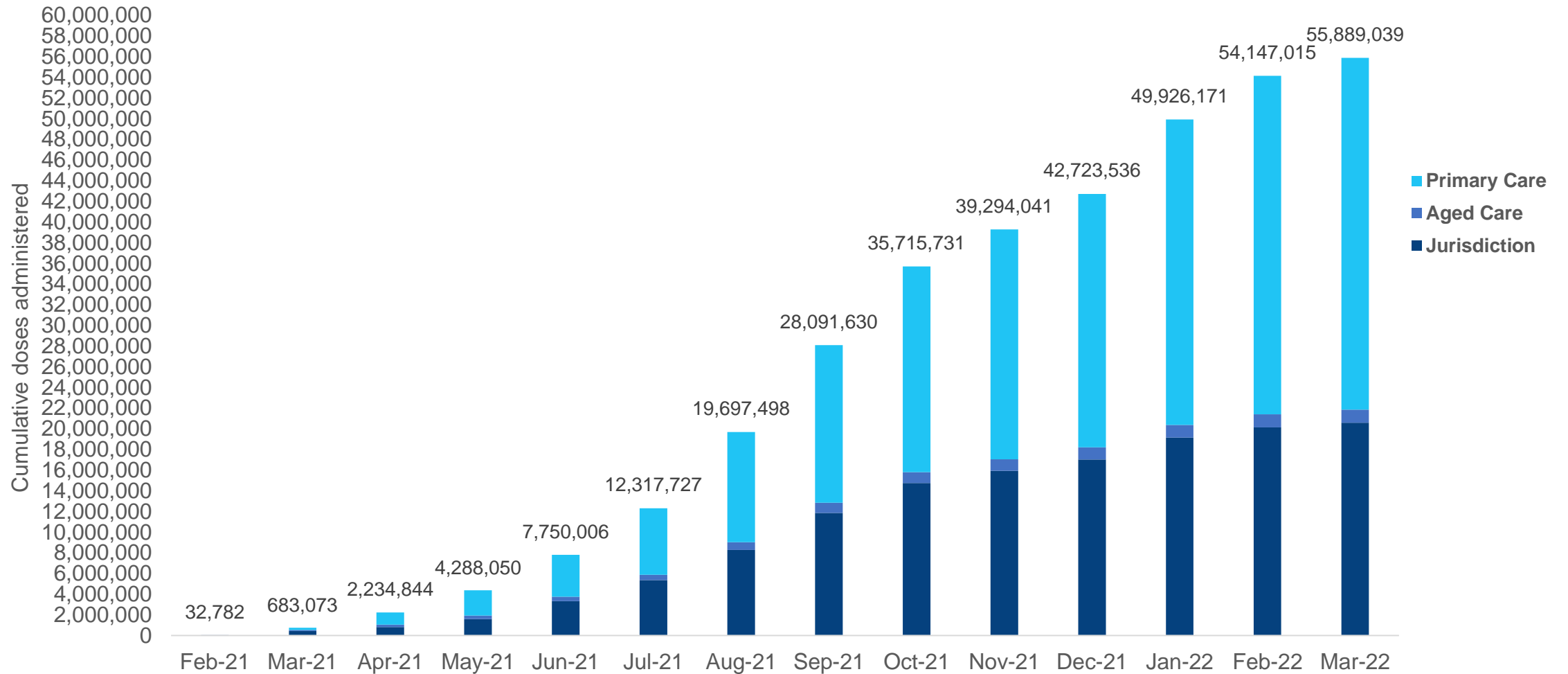
NT
319,726
 (+508 daily increase)

*Sourced from the Australian Immunisation Register. Numbers are calculated as difference in daily cumulative reported numbers to allow for historical corrections.

Source: Australian Immunisation Register

Data as at:
22 Mar 2022

Cumulative doses administered by channel



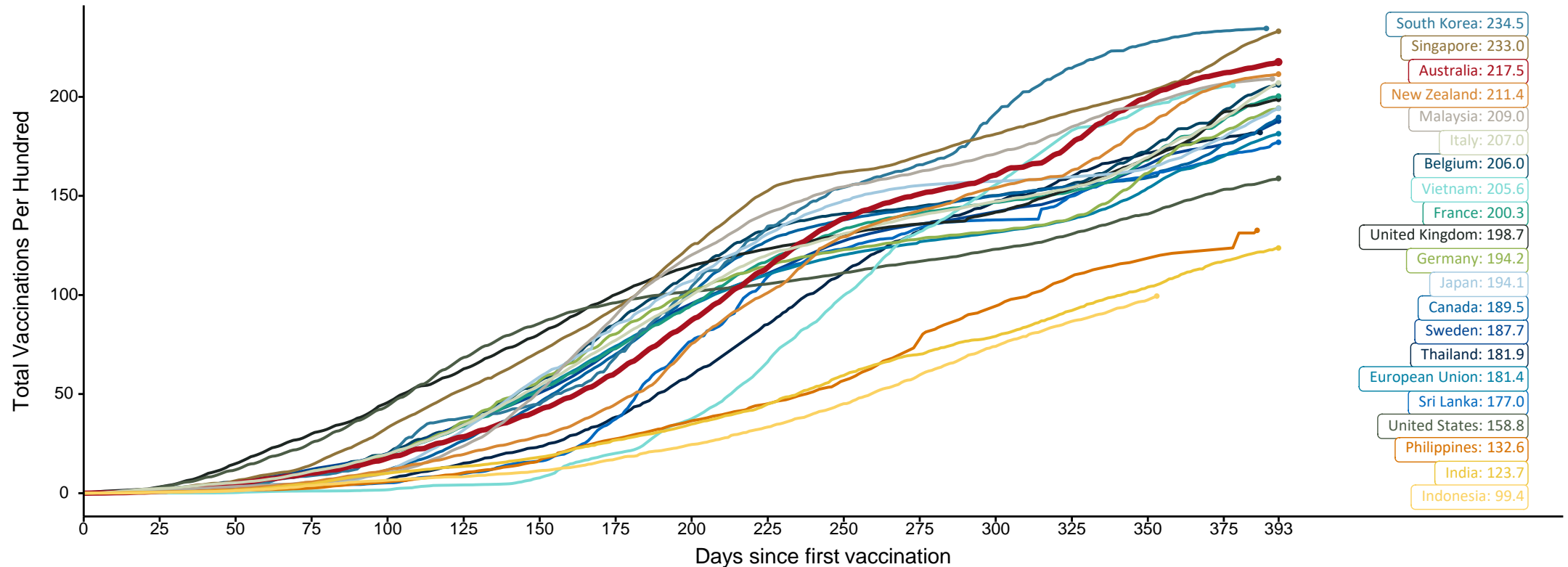
Source: Australian Immunisation Register

Doses at equivalent stages of rollout (Day 393)

Data as at:
22 Mar 2022

The x-axis is truncated at the length of Australia's vaccination program. Countries with intermittent reporting have had their doses per 100 imputed to Australia's current stage of rollout. Israel excluded as it is beyond scale of the graph

Cumulative doses administered (22 Mar): **55,889,039**

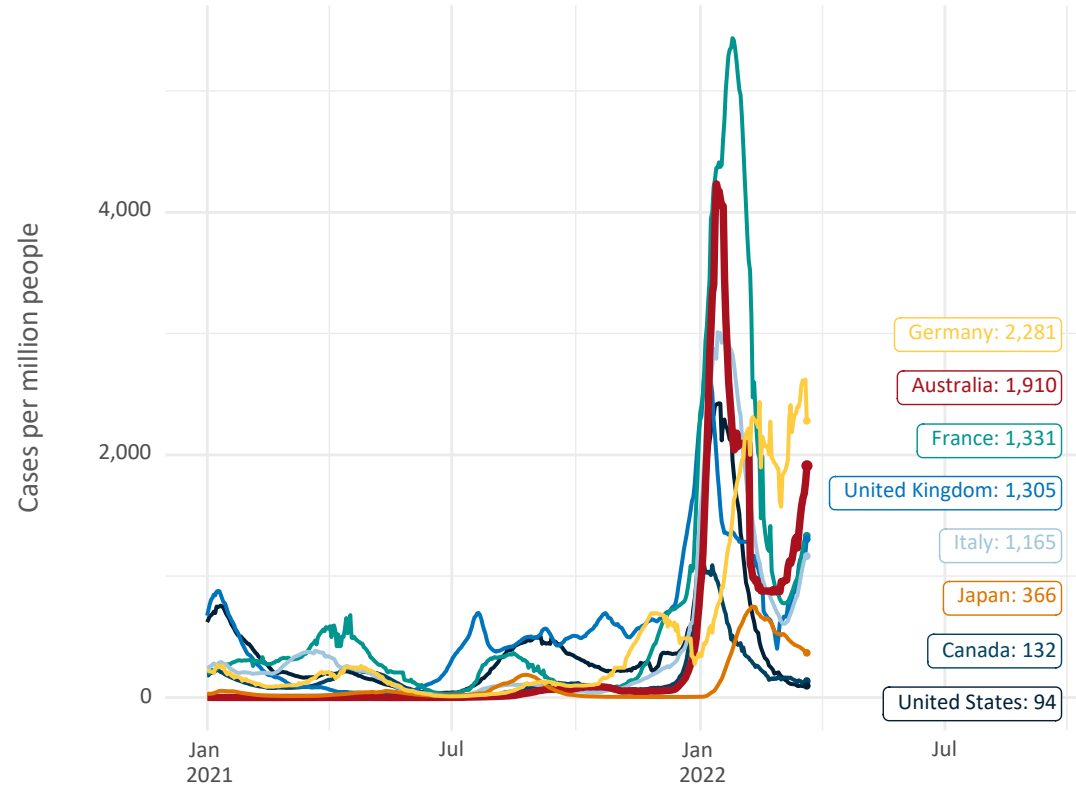


Note: From 11 January 2022, data for Australia includes all doses administered to people 5 and over. Prior to 11 January, data was for 12 and over.
Source: Department of Health (Australia), Our World in Data (international)
Latest data: 22 March

Data as at:
22 Mar 2022

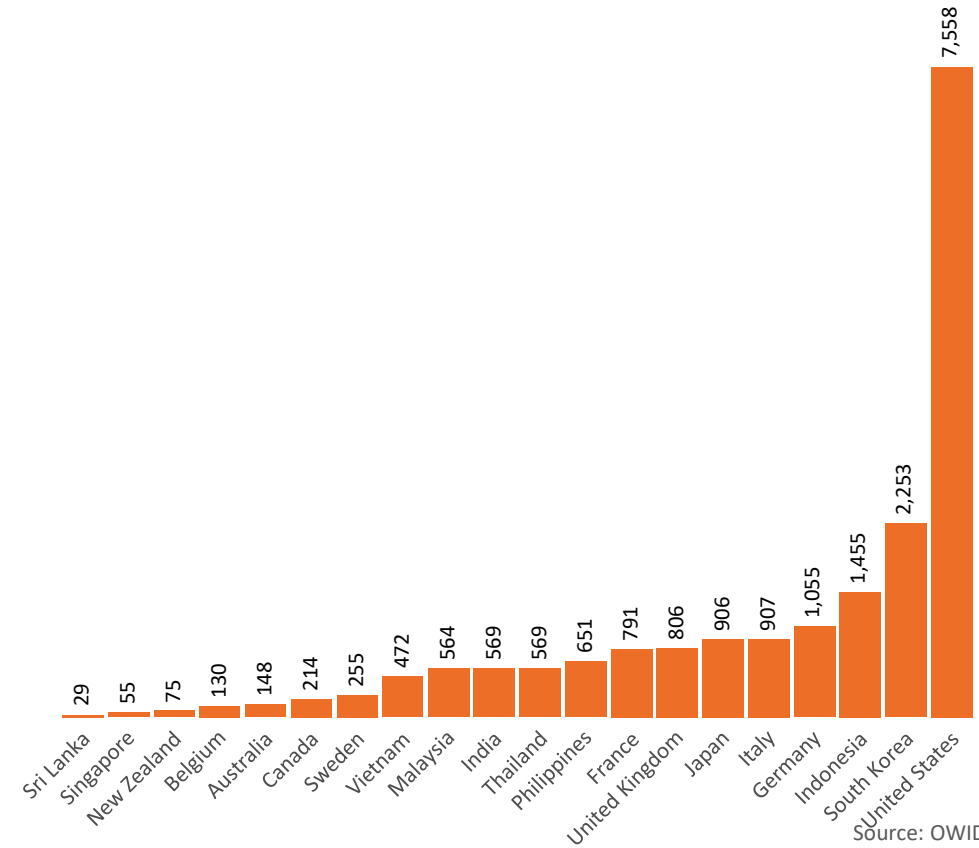
International data – COVID-19

New daily cases per million in 2021, Australia and G7 countries
Smoothed - 7 day average



Source: OWID
Data downloaded: 23 Mar 2022 07:02
Latest data: 21 Mar 2022

COVID-19 deaths in past 7 days - Australia and select countries



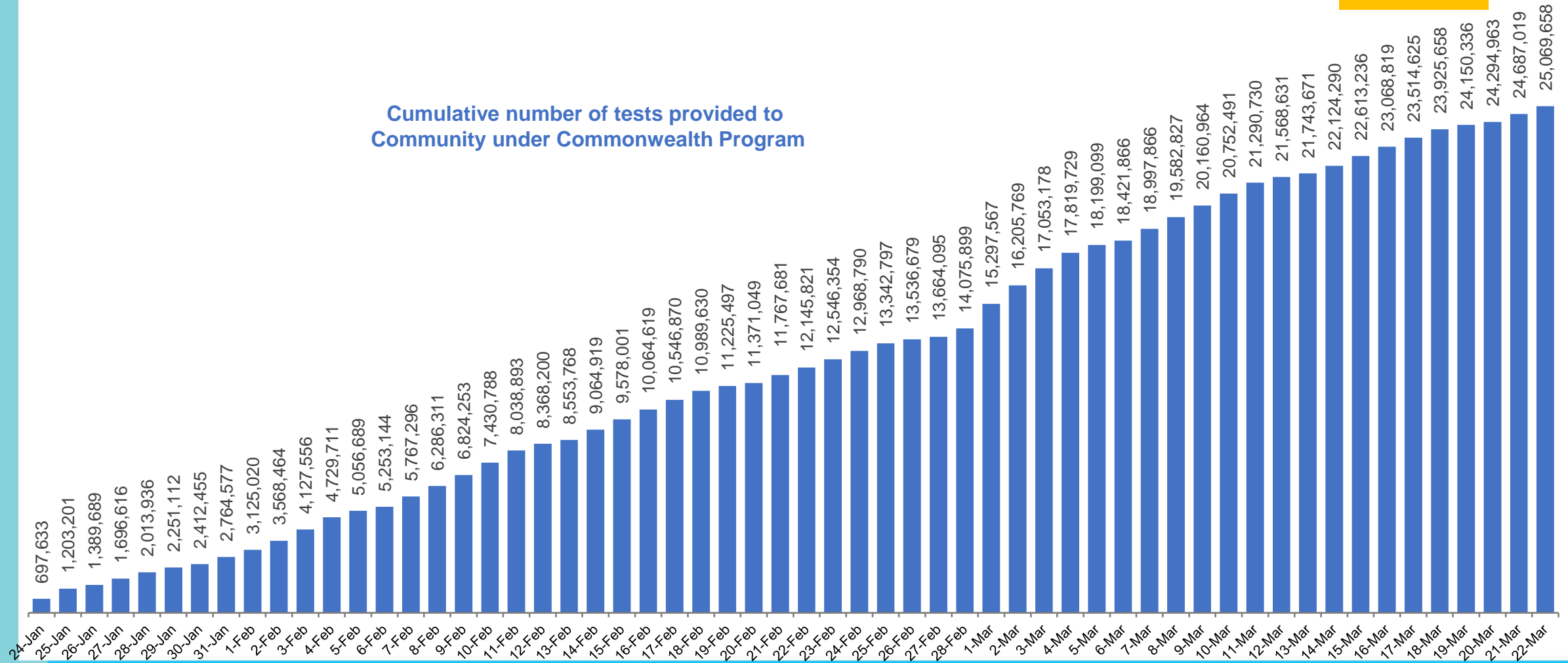
Source: OWID
Data downloaded: 23 Mar 2022 07:02
Latest data: 21 Mar 2022

Data as at:
22 Mar 2022

Concessional rapid antigen test program


5,617 pharmacies have delivered over 25 million rapid antigen tests to more than 4m eligible concession card holders under the Government's concessional rapid antigen test program.

Cumulative number of tests provided to
Community under Commonwealth Program



Pandemic Response Payments

Data as at midnight: 20 Mar 2022
Updated weekly



2.38 million
People have received at least one COVID Disaster Payment (including ISP200)

\$13.88 billion
Paid Out as at 20 Mar 2022


7.22 million
Claims granted across three different payments



93%
of Claims Received Digitally



COVID Disaster Payment:	5.89 million claims received - 2.19 million individuals paid a total of \$12.59 billion.
\$200 Income Support Payment:	353,000 claims received - 183,000 individuals paid a total of \$268.9 million.
Pandemic Leave Disaster Payment:	1.46 million claims received - 907,000 individuals paid a total of \$1.02 billion.



THREE PAYMENTS AVAILABLE

COVID Disaster Payment
assisting during a lockdown event in a Commonwealth hotspot.

Income Support Payment \$200
for income support recipients who lost at least 8 hours of work.

Pandemic Leave Disaster Payment
for those who have to self-isolate, quarantine or care.

For more information visit:
servicesaustralia.gov.au

COVID-19 DISASTER PAYMENTS

Northern Territory
Lockdown (#3) from 16 Nov to 22 Nov
Claiming period ended 27 Dec

7,500 people have received at least one COVID Disaster Payment.

\$6.9m paid out as at 20 Mar 2022.

Nil paid in initial payments in the week ending 20 Mar 2022.

Cumulative payments made by Territory since activation on 25 Aug 2021.



Date	Cumulative Payments
20 Feb	\$6.9m
27 Feb	\$6.9m
6 Mar	\$6.9m
13 Mar	\$6.9m
20 Mar	\$6.9m

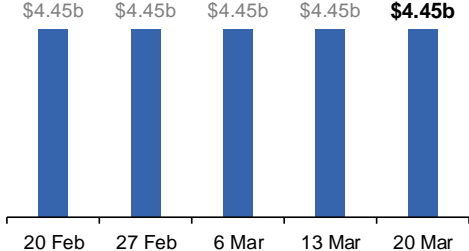
Victoria
Lockdown (#6) from 6 Aug to 28 Oct
Claiming period ended 9 Dec

745,000 people have received at least one COVID Disaster Payment.

\$4.45b paid out as at 20 Mar 2022.

\$1,000 paid in initial and reoccurring payments in the week ending 20 Mar 2022.

Cumulative payments made by State since activation on 8 Jun 2021.



Date	Cumulative Payments
20 Feb	\$4.45b
27 Feb	\$4.45b
6 Mar	\$4.45b
13 Mar	\$4.45b
20 Mar	\$4.45b

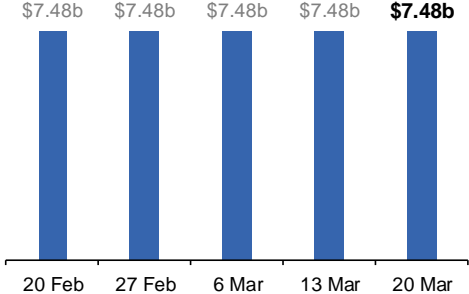
New South Wales
Lockdown from 24 Jun to 10 Oct
Claiming period ended 27 Nov

1.08m people have received at least one COVID Disaster Payment.

\$7.48b paid out as at 20 Mar 2022.

\$450 paid in initial and reoccurring payments in the week ending 20 Mar 2022.

Cumulative payments made by State since activation on 1 Jul 2021.



Date	Cumulative Payments
20 Feb	\$7.48b
27 Feb	\$7.48b
6 Mar	\$7.48b
13 Mar	\$7.48b
20 Mar	\$7.48b

Australian Capital Territory
Lockdown from 12 Aug to 14 Oct
Claiming period ended 25 Nov

65,000 people have received at least one COVID Disaster Payment.

\$344.7m paid out as at 20 Mar 2022.

Nil paid in initial and reoccurring payments in the week ending 20 Mar 2022.

Cumulative payments made by Territory since activation on 20 Aug 2021.



Date	Cumulative Payments
20 Feb	\$344.7m
27 Feb	\$344.7m
6 Mar	\$344.7m
13 Mar	\$344.7m
20 Mar	\$344.7m

Pandemic Response Payments (continued)

Data as at midnight: 20 Mar 2022
Updated weekly

COVID-19 DISASTER PAYMENTS

Tasmania

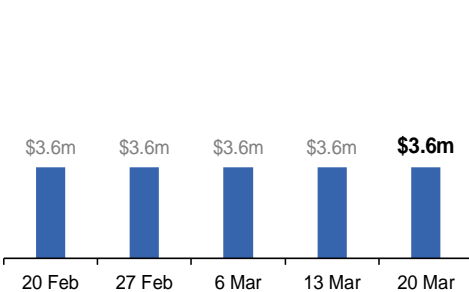
Lockdown from 15 Oct to 18 Oct
Claiming period ended 12 Nov

6,900 people have received at least one COVID Disaster Payment.

\$3.6m paid out as at 20 Mar 2022.

Nil paid in initial and reoccurring payments in the week ending 20 Mar 2022.

Cumulative payments made by State since activation on 22 Oct 2021.



Queensland

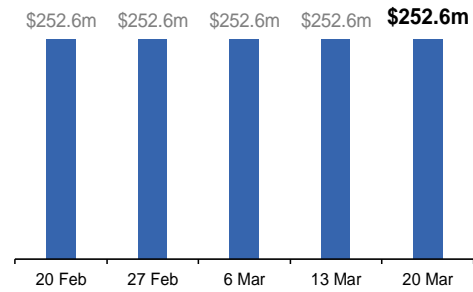
Lockdown from 31 Jul to 11 Aug
Claiming period ended 28 Aug

196,000 people have received at least one COVID Disaster Payment.

\$252.6m paid out as at 20 Mar 2022.

Nil paid in initial and reoccurring payments in the week ending 20 Mar 2022.

Cumulative payments made by State since activation on 7 Aug 2021.



South Australia

Lockdown from 21 to 27 Jul
Claiming period ended 17 Aug

86,000 people have received at least one COVID Disaster Payment.

\$48.2m paid out as at 20 Mar 2022.

Nil paid in initial and reoccurring payments in the week ending 20 Mar 2022.

Cumulative payments made by State since activation on 28 Jul 2021.

