



**Australian Government**  
**Operation COVID Shield**

# COVID-19 Vaccine Roll-out

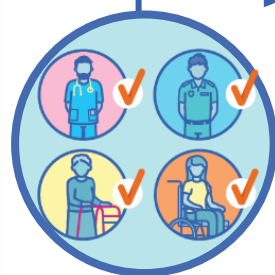
21 March 2022

Data as at:  
20 Mar 2022

## Total vaccine doses



**55,716,641** total vaccine  
doses administered nationally as at 20 March  
**+36,546** recorded in the last 24 hours



**19,930,712**

people have had at least one  
dose

**>95%**

of people over the age of 16  
have had at least one dose



**19,572,746**

people are fully vaccinated

**94.9%**

of people over the age of 16 are  
fully vaccinated



**12,497,152**

people over the age of 16  
who have received more  
than two doses

**NSW**  
**17,331,174**  
(+7,626 daily  
increase)

**VIC**  
**14,702,408**  
(+10,650 daily  
increase)

**QLD**  
**10,561,241**  
(+5,758 daily  
increase)

**WA**  
**6,067,846**  
(+4,577 daily  
increase)

**TAS**  
**1,246,392**  
(+2,094 daily  
increase)

**SA**  
**3,832,455**  
(+3,463 daily  
increase)

**ACT**  
**1,432,090**  
(+1,977 daily  
increase)

**NT**  
**543,035**  
(+401 daily  
increase)

\*Administration state breakdown indicates state in which a vaccine was administered

\*\*Overall dose count includes instances of more than three doses per person in a small number of cases.

Source: Australian Immunisation Register

# Booster Vaccinations

Australia's COVID-19  
Vaccine Roadmap

Data as at:  
20 Mar 2022



**179,956**

Indigenous people who have  
received more than two doses

**49.8%**

of eligible population (361,018)



**160,978**

Aged Care Residents who have  
received more than two doses##

**92.8%**

of eligible population (173,424)



**167,202**

NDIS participants

**20,126**

NDIS residents

who have received more than two doses#

**70.6%**

of eligible population  
(236,000)

**85.7%**

of eligible population  
(23,000)



**12,497,152** total people who  
have received more than two doses nationally

**+12,706** recorded in the last 24 hours

**66.4%** of people who are eligible (18,831,488)  
have received more than two doses

NSW	People	% of Eligible
Cumulative	3,835,945	62.3%
Daily increase	2,928	

VIC	People	% of Eligible
Cumulative	3,391,696	67.7%
Daily increase	3,719	

QLD	People	% of Eligible
Cumulative	2,155,473	61.0%
Daily increase	1,953	

WA	People	% of Eligible
Cumulative	1,499,140	85.0%
Daily increase	2,186	

SA	People	% of Eligible
Cumulative	883,784	70.2%
Daily increase	1,047	

TAS	People	% of Eligible
Cumulative	280,051	68.7%
Daily increase	71	

ACT	People	% of Eligible
Cumulative	252,742	73.7%
Daily increase	438	

NT	People	% of Eligible
Cumulative	104,849	66.0%
Daily increase	135	

\*People may belong to multiple groups and could be represented in the above breakdowns multiple times.

# NDIS participants data as at 17 March 2022.

## Aged Care Residents data as at 18 March 2022.

Source: Australian Immunisation Register

**93,472**

doses administered to persons  
residing in other territories or with  
missing residential information

# Vaccinations by residential location

Australia's COVID-19 Vaccine Roadmap

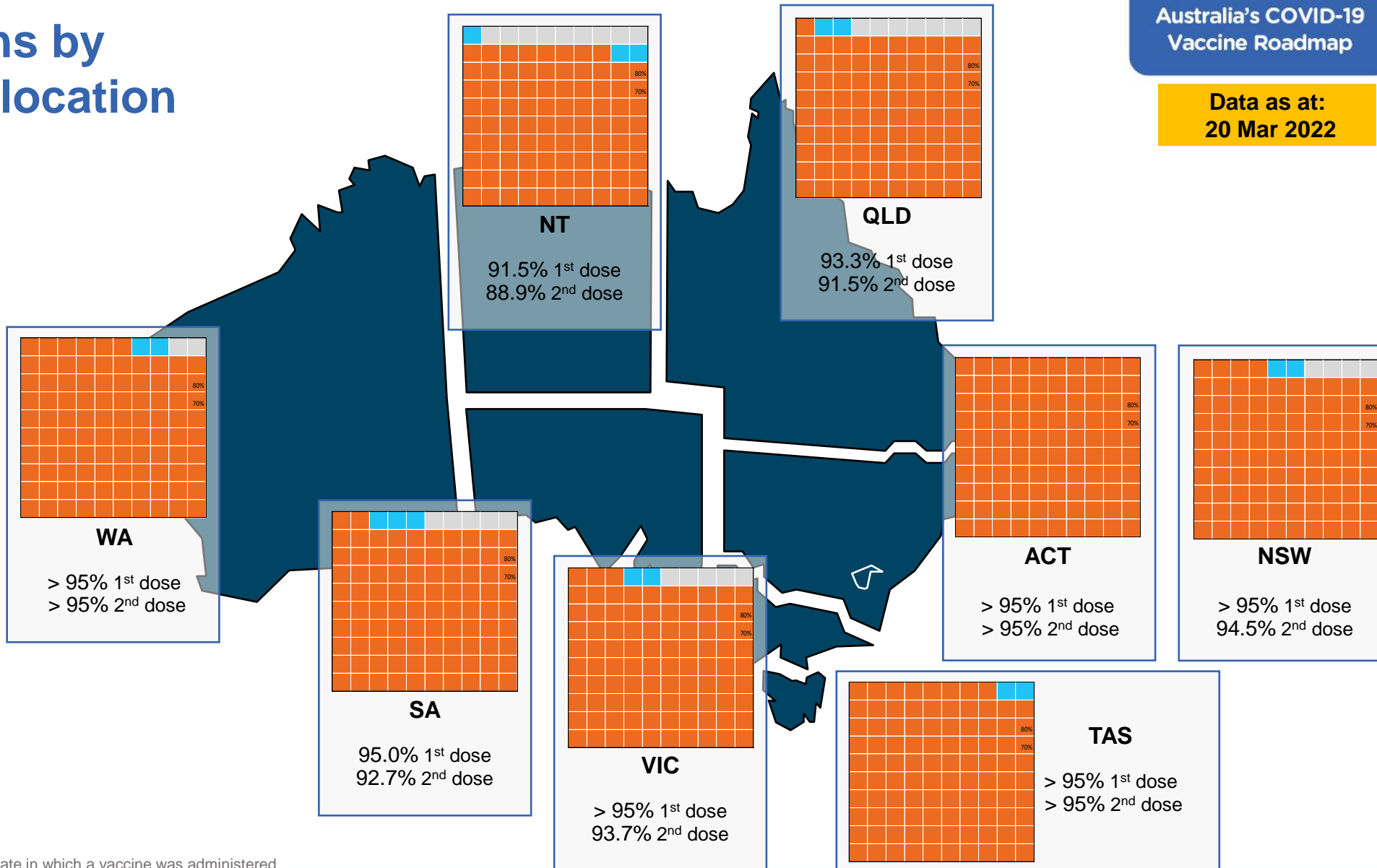
Data as at:  
20 Mar 2022

## First doses

Age	Today	4 weeks ago	8 weeks ago
16+	>95%	>95%	>95%
50+	>95%	>95%	>95%
70+	>95%	>95%	>95%

## Fully vaccinated

Age	Today	4 weeks ago	8 weeks ago
16+	94.9%	94.4%	93.4%
50+	>95%	>95%	>95%
70+	>95%	>95%	>95%



\*Residential state may differ from the state in which a vaccine was administered

# Commonwealth and Jurisdiction vaccine doses administered

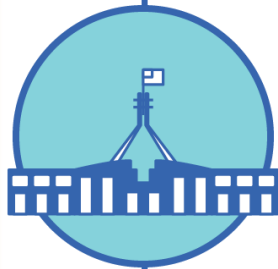
Data as at:  
20 Mar 2022



**55,716,641** total vaccine  
doses administered nationally as at 20 March  
**+ 36,546** recorded in the last 24 hours



**20,543,332**  
doses administered by state  
and territory facilities  
**+ 20,832**  
recorded in the last 24 hours



**35,173,309**  
doses administered by  
commonwealth facilities  
**+ 15,714**  
recorded in the last 24 hours

**33,911,399** total vaccine doses  
administered in primary care settings  
**1,261,910** total vaccine doses  
administered in aged care and disability  
settings

NSW	Jurisdictions	Commonwealth
Cumulative	5,017,186	12,313,988
Daily increase	3,665	3,961

VIC	Jurisdictions	Commonwealth
Cumulative	5,936,635	8,765,773
Daily increase	5,268	5,382

QLD	Jurisdictions	Commonwealth
Cumulative	3,772,301	6,788,940
Daily increase	3,279	2,479

WA	Jurisdictions	Commonwealth
Cumulative	2,416,370	3,651,476
Daily increase	1,904	2,673

TAS	Jurisdictions	Commonwealth
Cumulative	601,644	644,748
Daily increase	2,027	67

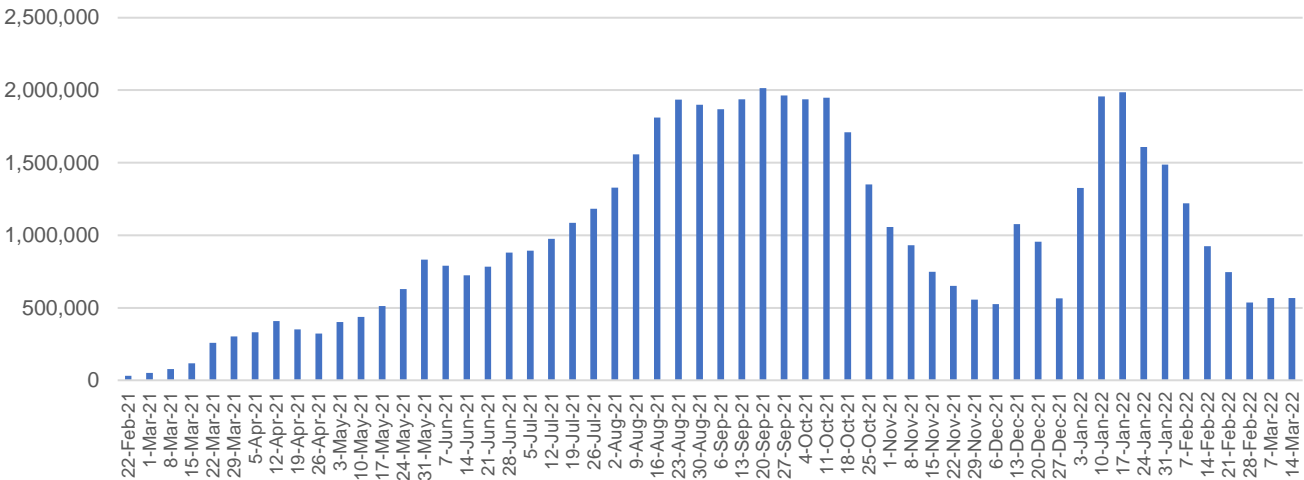
SA	Jurisdictions	Commonwealth
Cumulative	1,745,800	2,086,655
Daily increase	2,860	603

ACT	Jurisdictions	Commonwealth
Cumulative	734,832	697,258
Daily increase	1,460	517

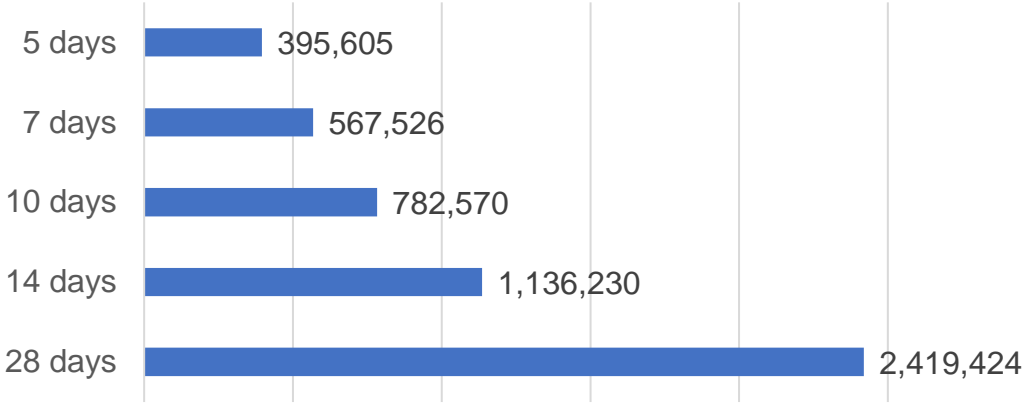
NT	Jurisdictions	Commonwealth
Cumulative	318,564	224,471
Daily increase	369	32

# Vaccine milestone charts

Doses Administered by Week



Doses Reported

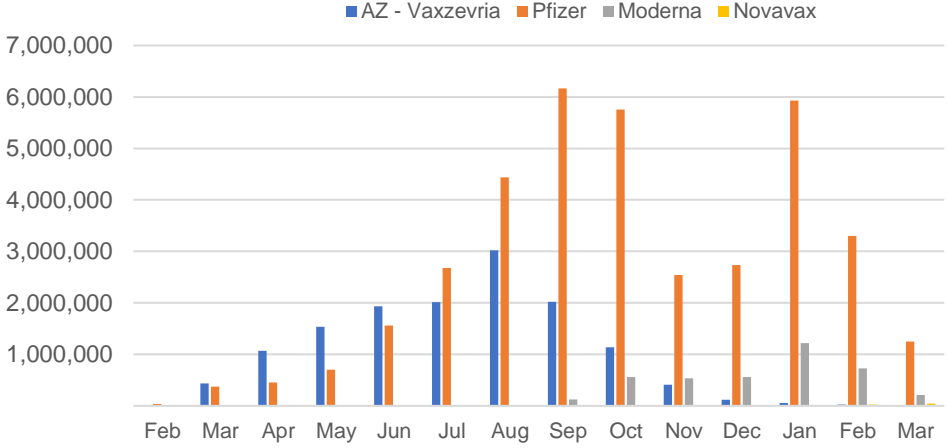


\*Sourced from the Australian Immunisation Register.

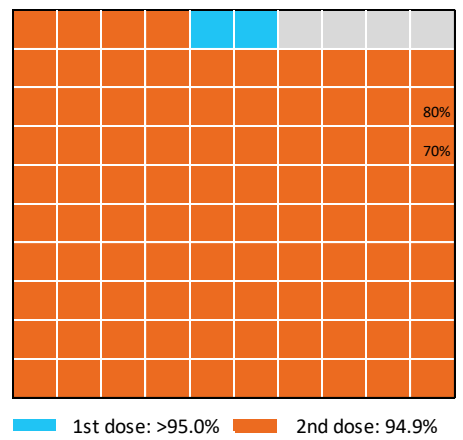
Data as at:  
20 Mar 2022

Australia's COVID-19  
Vaccine Roadmap

Doses by administration month and vaccine type



Eligible population percentage coverage



\*Each square represents 1% of the national population. Squares are filled as milestones are achieved.

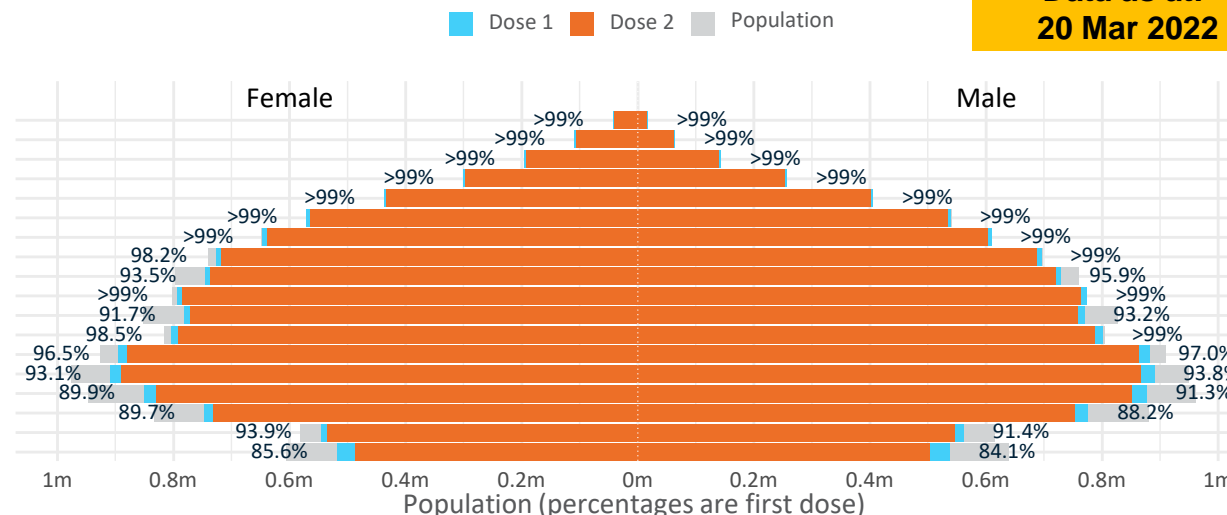
Data as at:  
20 Mar 2022

# Doses by age and sex

First and second doses by age and sex

	16+	50+	12-15	5-11
Dose 1	96.66% (19,930,712 doses / 20,619,959 people)	>99% (8,808,541 doses / 8,749,703 people)	84.91% (1,056,257 doses / 1,243,990 people)	51.70% (1,177,027 doses / 2,276,638 people)
Dose 2	94.92% (19,572,746 doses / 20,619,959 people)	>99% (8,694,214 doses / 8,749,703 people)	79.62% (990,434 doses / 1,243,990 people)	17.12% (389,665 doses / 2,276,638 people)

Age	Dose 1	Dose 2
95+	59,760 (>99%)	56,348 (>99%)
90-94	174,005 (>99%)	168,135 (>99%)
85-89	339,303 (>99%)	331,869 (>99%)
80-84	557,993 (>99%)	550,116 (>99%)
75-79	842,861 (>99%)	833,831 (>99%)
70-74	1,110,997 (>99%)	1,099,372 (>99%)
65-69	1,257,309 (>99%)	1,242,317 (98.7%)
60-64	1,423,494 (>99%)	1,406,148 (97.9%)
55-59	1,474,477 (94.8%)	1,456,691 (93.6%)
50-54	1,568,342 (>99%)	1,549,387 (>99%)
45-49	1,551,643 (92.5%)	1,530,731 (91.3%)
40-44	1,607,795 (>99%)	1,581,044 (97.6%)
35-39	1,780,604 (97.0%)	1,745,825 (95.1%)
30-34	1,806,464 (93.9%)	1,762,046 (91.6%)
25-29	1,737,784 (91.1%)	1,688,465 (88.6%)
20-24	1,529,496 (89.3%)	1,488,479 (86.9%)
16-19	1,108,385 (92.7%)	1,081,942 (90.5%)
12-15	1,056,257 (84.9%)	990,434 (79.6%)



	AUS	ACT	NSW	NT	QLD	SA	TAS	VIC	WA
16 and over - dose 1	19,930,712	351,337	6,300,637	174,464	3,836,455	1,368,316	442,933	5,140,922	2,080,766
16 and over - dose 2	19,572,746	345,897	6,205,212	169,483	3,762,868	1,334,978	433,016	5,064,310	2,038,962
16 and over - population	20,619,959*	344,037	6,565,651	190,571	4,112,707	1,440,400	440,172	5,407,574	2,114,978
16 and over % with dose 1	96.66%	>99%	95.96%	91.55%	93.28%	95.00%	>99%	95.07%	98.38%
16 and over % with dose 2	94.92%	>99%	94.51%	88.93%	91.49%	92.68%	98.37%	93.65%	96.41%
5 to 11 - dose 1	1,177,027	31,572	350,157	12,991	206,588	83,271	28,251	321,677	135,291
5 to 11 - dose 2	389,665	13,299	123,047	3,690	72,976	27,746	11,991	100,833	34,422
5 to 11 - population	2,276,638	39,789	716,460	24,750	478,731	148,816	45,033	578,499	244,154
5 to 11 % with dose 1	51.70%	79.35%	48.87%	52.49%	43.15%	55.96%	62.73%	55.61%	55.41%
5 to 11 % with dose 2	17.12%	33.42%	17.17%	14.91%	15.24%	18.64%	26.63%	17.43%	14.10%
12 to 15 - dose 1	1,056,257	20,093	325,924	10,910	207,680	68,453	22,907	276,183	114,980
12 to 15 - dose 2	990,434	19,260	309,303	9,717	192,810	64,116	21,581	262,006	103,753
12 to 15 - population	1,243,990	19,693	390,330	13,060	270,146	82,747	26,308	308,611	132,869
12 to 15 % with dose 1	84.91%	>99%	83.50%	83.54%	76.88%	82.73%	87.07%	89.49%	86.54%
12 to 15 % with dose 2	79.62%	97.80%	79.24%	74.40%	71.37%	77.48%	82.03%	84.90%	78.09%

\*National population will not equal sum of listed jurisdictions due to a small number of people counted in national population residing in some 'other' territories. Sum of state doses will not add to national total as some records are unable to be geocoded to a State or Territory.  
Doses sourced from Australian Immunisation Register, population from ABS ERP June 2020

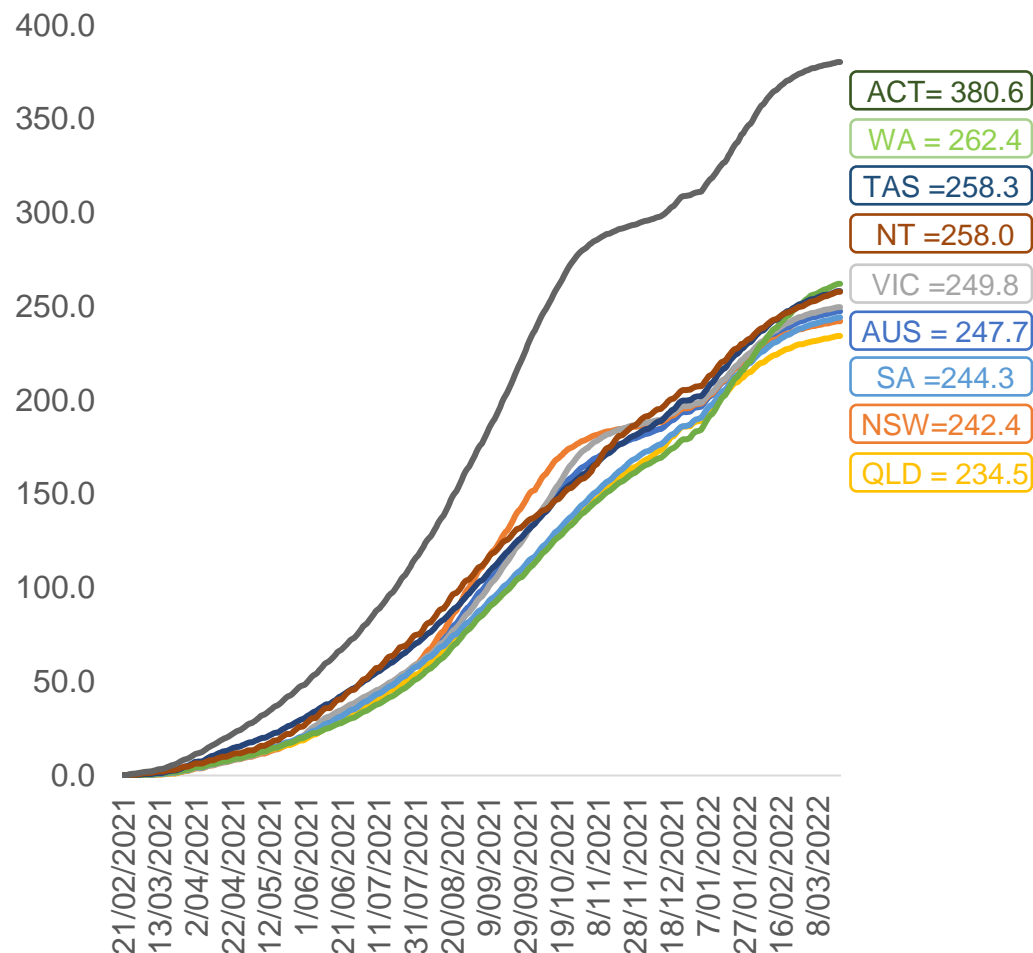


# Vaccinations by location

Data as at:  
20 Mar 2022

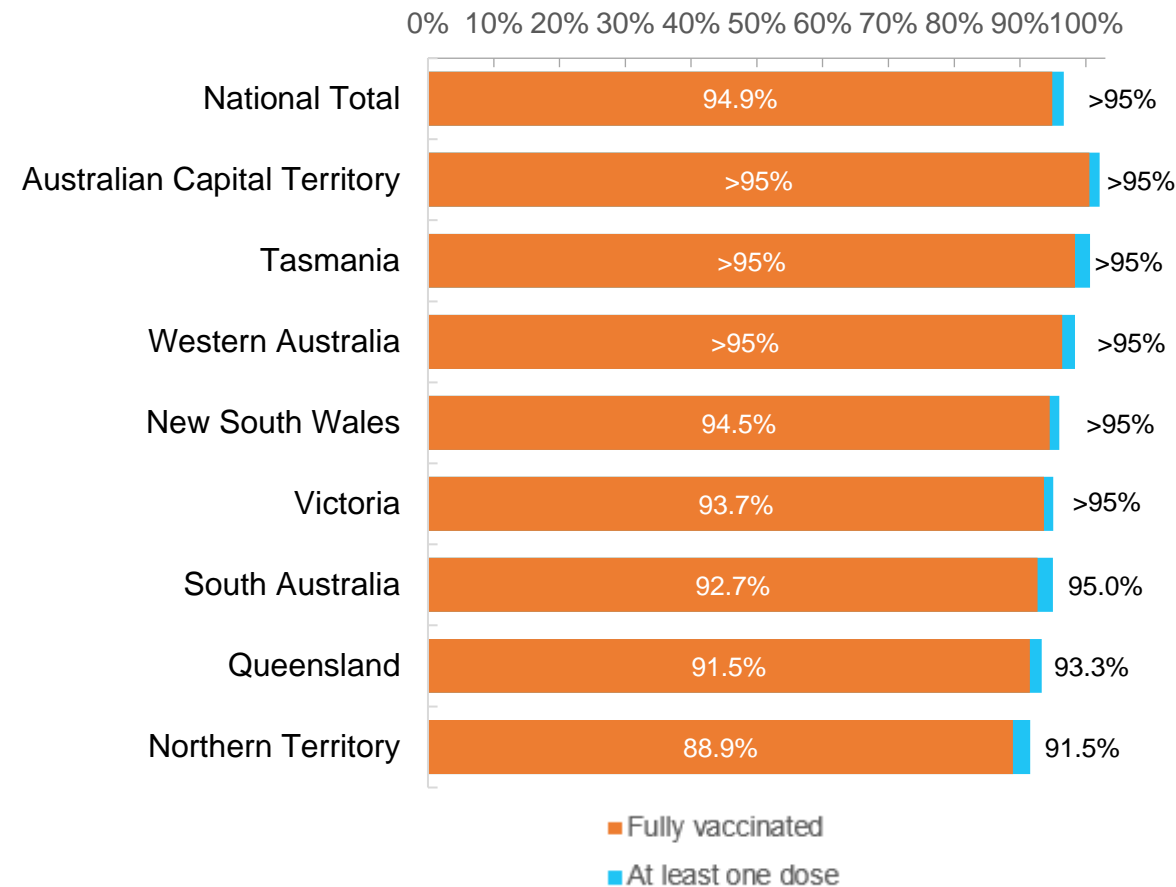
Australia's COVID-19  
Vaccine Roadmap

Cumulative total doses administered vs eligible state populations\*



\*Not an indication of percentage vaccinated, numbers will exceed 100 due to multiple doses required per person of the population.  
All doses are included for those aged 12 and above, and are based on vaccination provider location.

First and Second Doses by residential location





# Aboriginal and Torres Strait Islander peoples

## Number of people vaccinated

Data as at:  
15 Mar 2022  
Updated weekly

Australia's COVID-19  
Vaccine Roadmap



**434,708**

people over the age of 16  
have had at least one dose

**83.8%**

of people over the age of 16  
have had at least one dose



**411,587**

people over the age of 16  
are fully vaccinated

**79.4%**

of people over the age of 16 are  
fully vaccinated



People aged 12 – 15 years

**48,327**

**41,857**

**68.1%**

At least one dose

**59.0%**

Fully vaccinated

### 177 Aboriginal community controlled health services (ACCHS)

0#

50

27

44

12

3

21

20

**ACT**

**NSW**

**NT**

**QLD**

**SA**

**TAS**

**VIC**

**WA**

Medicare Address State <sup>##</sup>	Individuals Dose 1	Individuals Dose 1 %	Individuals Dose 2	Individuals Dose 2 %
Australian Capital Territory	4,837	91.3%	4,713	88.9%
New South Wales	134,608	86.6%	131,283	84.5%
Northern Territory	42,154	89.1%	39,604	83.7%
Queensland	114,770	80.9%	108,282	76.3%
South Australia	19,708	79.3%	18,053	72.7%
Tasmania	13,965	88.4%	13,474	85.3%
Victoria	35,197	89.5%	34,308	87.3%
Western Australia	52,750	84.0%	47,087	75.0%
Unknown/Other Territories	16,719	64.7%	14,783	57.3%
<b>Totals</b>	<b>434,708</b>	<b>83.8%</b>	<b>411,587</b>	<b>79.4%</b>

Source: Australian Immunisation Register

\*Identifying as Aboriginal and Torres Strait Islander is optional and the estimated population may be under reported.

\*\*Includes all Aboriginal and Torres Strait Islander peoples who have received a vaccination, not limited to those administered in an ACCHS setting

#ACCHS in the ACT are currently operating as a Commonwealth Vaccine Clinics so not included to avoid double counting

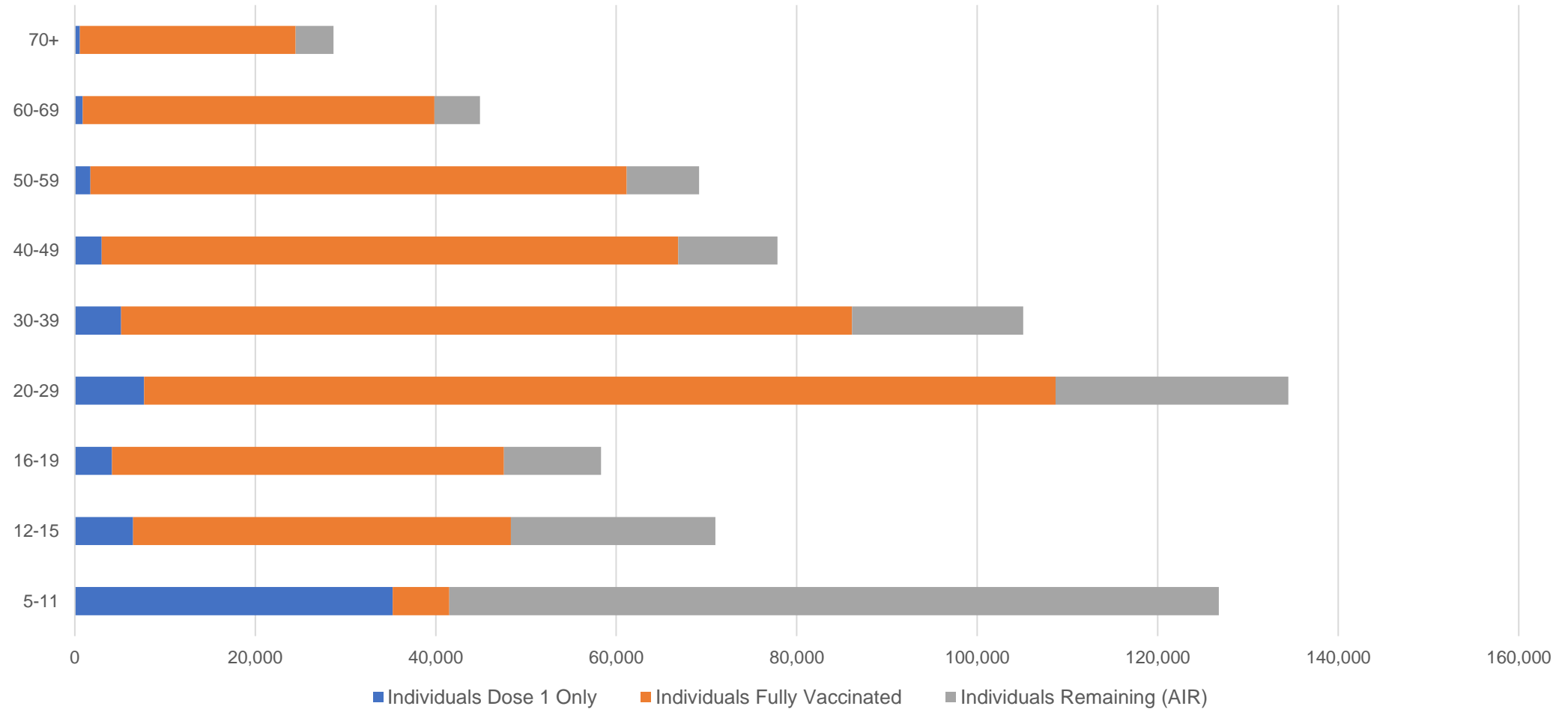
##The above table includes all identified Aboriginal and Torres Strait Islander people who are aged 16 and above by their state of residence.

# Aboriginal and Torres Strait Islander peoples

## Number of people vaccinated by age

Data as at:  
15 Mar 2022  
Updated weekly

Australia's COVID-19  
Vaccine Roadmap



Source: Australian Immunisation Register

# Commonwealth primary care

Data as at:  
20 Mar 2022

Australia's COVID-19  
Vaccine Roadmap



## Primary care vaccine administration sites

<b>5,793</b>	<b>128</b>	<b>178</b>	<b>3587</b>
GPs	CVCs	ACCHS	Pharmacies



**33,911,399** total vaccine doses administered  
primary care settings as at 20 March  
**+ 15,494** recorded in the last 24 hours

## Primary care vaccinations by provider type

	Doses administered	Daily increase	7 day increase
General Practice* includes other Commonwealth	27,512,656	10,477	268,099
Pharmacy	6,398,743	5,017	137,581

**NSW**  
**11,769,787**  
(+3,804 daily increase)

**VIC**  
**8,461,160**  
(+5,282 daily increase)

**QLD**  
**6,518,198**  
(+2,424 daily increase)

**WA**  
**3,525,255**  
(+2,594 daily increase)

**TAS**  
**625,442**  
(+51 daily increase)

**SA**  
**2,010,366**  
(+609 daily increase)

**ACT**  
**534,169**  
(+310 daily increase)

**NT**  
**203,562**  
(-5<sup>#</sup> daily increase)

**263,460**

doses administered to persons  
residing in other territories or with  
missing residential information

\*General practice includes Commonwealth Vaccination Clinics, Aboriginal Community Health Centres, Royal Flying Doctor Service and other Commonwealth vaccination facilities  
# Numbers are calculated as difference in daily cumulative reported numbers to allow for historical corrections in all data sources. This can occasionally result in negative numbers, such as for NT, where historical details about doses have been updated.

Source: Australian Immunisation Register

Data as at:  
20 Mar 2022

# Commonwealth aged care and disability doses administered



**1,261,910** (+ 220 last 24 hours)

Total vaccine doses administered in aged care and disability facilities as at 20 March

Number of doses administered as part of the Commonwealth aged and disability care rollout

**NSW**  
**558,023**  
(+4 daily increase)

**VIC**  
**234,895**  
(-3# daily increase)

**QLD**  
**199,447**  
(+17 daily increase)

**WA**  
**105,246**  
(+104 daily increase)

**TAS**  
**22,450**  
(+0 daily increase)

**SA**  
**83,903**  
(-1# daily increase)

**ACT**  
**16,644**  
(+68 daily increase)

**NT**  
**7,413**  
(+4 daily increase)

**33,889**

doses administered to persons residing in other territories or with missing residential information

\*Sourced from the Australian Immunisation Register. Includes all persons vaccinated at participating residential aged care, disability and related industry settings.

\*\*State level breakdown indicates the residential location and may not align to the state in which the vaccination occurred.

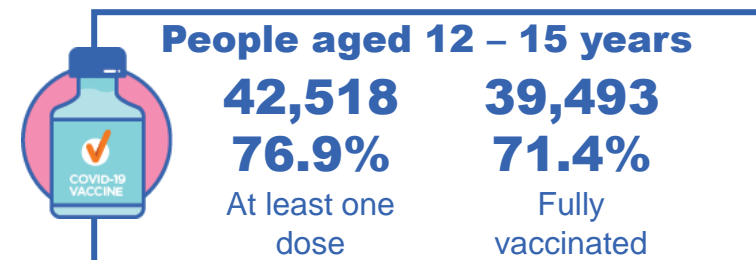
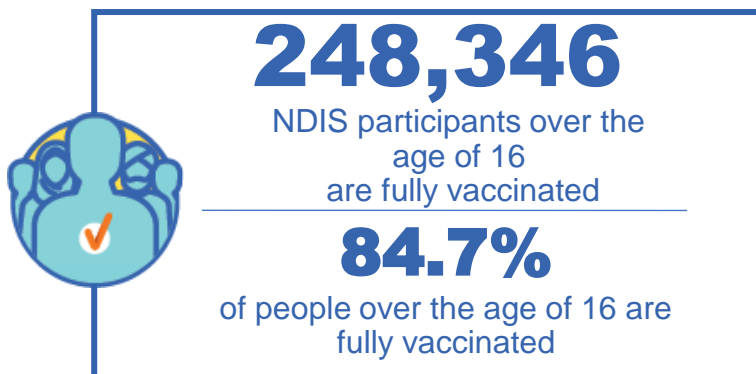
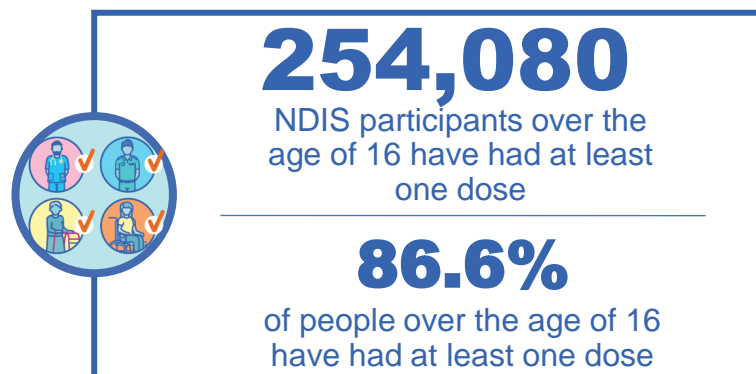
# Numbers are calculated as difference in daily cumulative reported numbers to allow for historical corrections in all data sources. This can occasionally result in negative numbers, such as for VIC and SA, where historical details about doses have been updated.

Source: Australian Immunisation Register

# National Disability Insurance Scheme (NDIS) reported vaccinations

Data as at:  
17 March 2022  
Updated weekly

Australia's COVID-19  
Vaccine Roadmap



## NDIS participant vaccinations

	People aged 16+ with at least one dose	People aged 16+ fully vaccinated	% People aged 16+ with at least one dose	% People aged 16+ fully vaccinated
ACT	4,816	4,745	88.8%	87.5%
NSW	78,269	76,929	87.2%	85.7%
NT	2,203	2,114	77.2%	74.1%
QLD	49,949	48,746	84.9%	82.9%
SA	20,683	20,050	84.3%	81.7%
TAS	6,366	6,176	86.6%	84.0%
VIC	67,692	66,368	87.9%	86.2%
WA	24,102	23,218	87.6%	84.3%
National	254,080	248,346	86.6%	84.7%

Source: Linkage between National Disability Insurance Agency data and the Australian Immunisation Register. Total NDIS participant numbers as at 28th February. Australian Immunisation Register data as at 16 March. Includes all participants regardless of residence type.

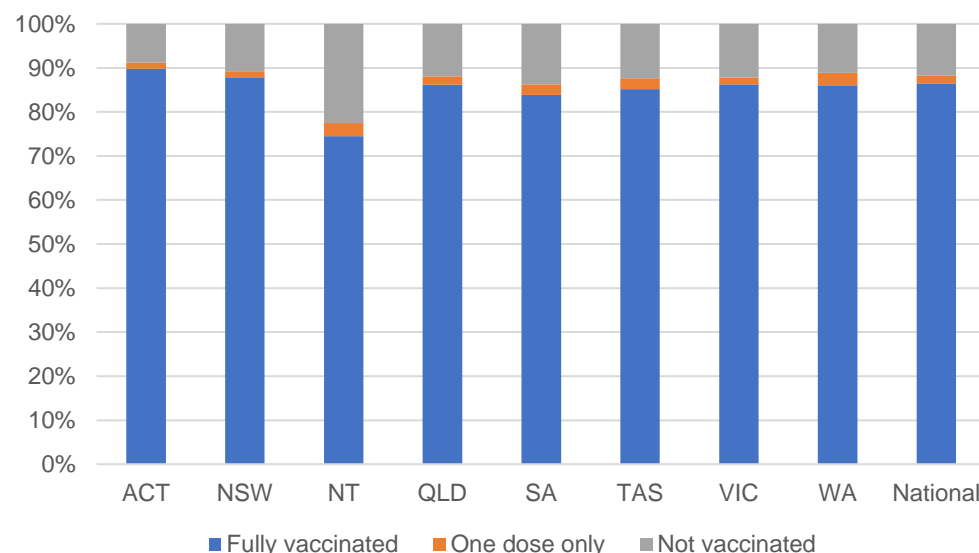
# National Disability Insurance Scheme (NDIS) reported vaccinations

Data as at:  
17 March 2022  
Updated Weekly

Australia's COVID-19  
Vaccine Roadmap

NATIONAL	Total people with at least one dose	People fully vaccinated	Total number of individuals in cohort	% People with at least one dose	% People fully vaccinated
NDIS participants living in disability accommodation	20,594	20,201	23,352	88.2%	86.5%

## NDIS participants in disability and aged care accommodation



Source: Linkage between National Disability Insurance Agency data and the Australian Immunisation Register. Includes participants residing in disability accommodation only.

Source: Total NDIS participant numbers as at 28th February. Participant data as at 16 March. Australian Immunisation Register data as at 16 March. Worker data as at 17 March.

## NDIS workforce vaccinations

	NDIS workers with at least one dose	NDIS workers fully vaccinated	% NDIS workers with at least one dose	% NDIS workers fully vaccinated
NSW	120,409	117,272	98.1%	95.5%
VIC	116,047	109,512	98.3%	92.7%
QLD	69,192	68,334	97.4%	96.2%
WA	32,695	30,144	98.5%	90.8%
SA	35,081	31,596	98.2%	88.4%
TAS	10,794	10,495	99.7%	96.9%
ACT	3,550	3,519	99.6%	98.8%
NT	3,477	3,353	99.7%	96.1%
<b>TOTAL</b>	<b>391,245</b>	<b>374,225</b>	<b>98.1%</b>	<b>93.9%</b>

Source: the NDIS Commission has established a requirement for registered NDIS providers who provide intensive disability support services to report on the vaccination status of workers they employ, or otherwise engage, to deliver NDIS-funded supports and services, and who are required to be vaccinated in accordance with in-force state and territory public health orders. The statistics reflect data reported to the NDIS Commission by registered NDIS providers and should be considered indicative and subject to change

Note: Some registered NDIS providers are yet to report on the vaccination status of their workforce. The NDIS Commission is working with those providers around reporting requirements.

Remaining workers not included include those exempt from vaccination requirements, workers whose vaccination status is not yet verified by the provider (such as workers on leave) and provider reporting anomalies.

# Residential aged care vaccination rollout

Australia's COVID-19  
Vaccine Roadmap

Data as at:  
17 Mar 2022  
Updated weekly

Residential aged care facilities status

100%

Commonwealth facilities  
visited (2,537 planned sites)

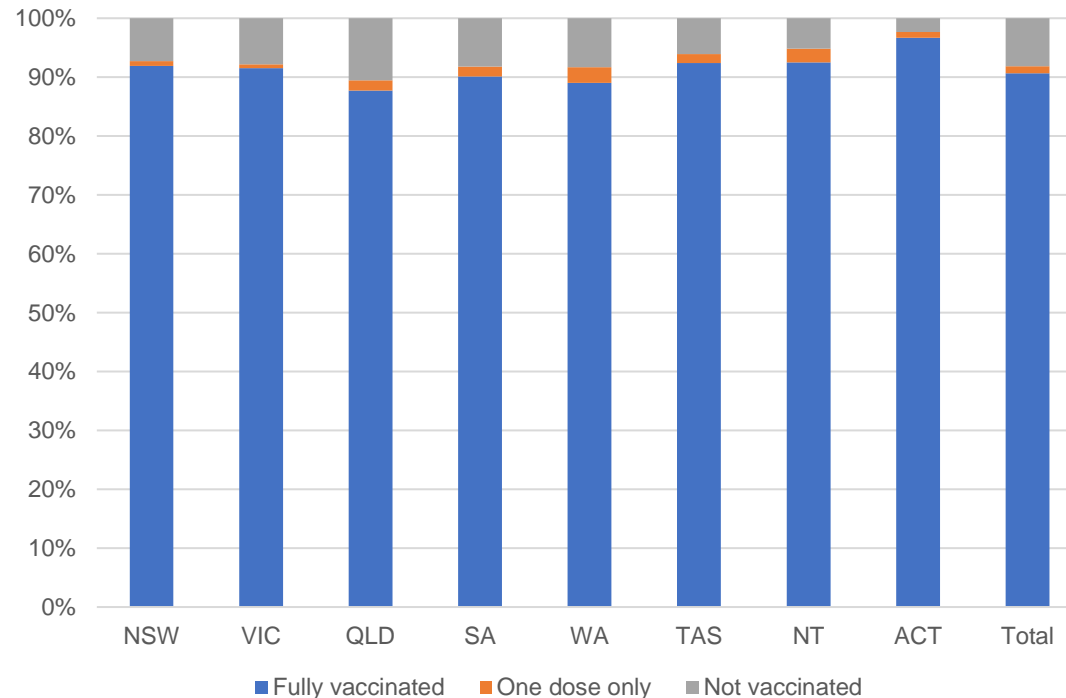
173,424

People fully vaccinated

175,751

People with at least  
one dose

## Aged care resident vaccinations



## Aged care worker vaccinations

Jurisdictions	Total workers with at least one dose	Workers fully vaccinated	% Workers with at least one dose	% Workers fully vaccinated
NSW	78,141	78,131	96.7%	96.7%
VIC	66,947	66,946	97.3%	97.3%
QLD	48,022	48,015	97.8%	97.8%
SA	26,506	26,479	97.7%	97.6%
WA	23,931	23,926	99.7%	99.6%
TAS	7,773	7,773	100.0%	100.0%
NT	833	833	100.0%	100.0%
ACT	3,061	3,061	100.0%	100.0%
Total	255,214	255,164	97.6%	97.6%

Source: My Aged Care Portal vaccination progress

\*Status updates are provided by facilities at least once per week. Reporting is updated Monday to Friday to encompass different facility updates being made on different days.

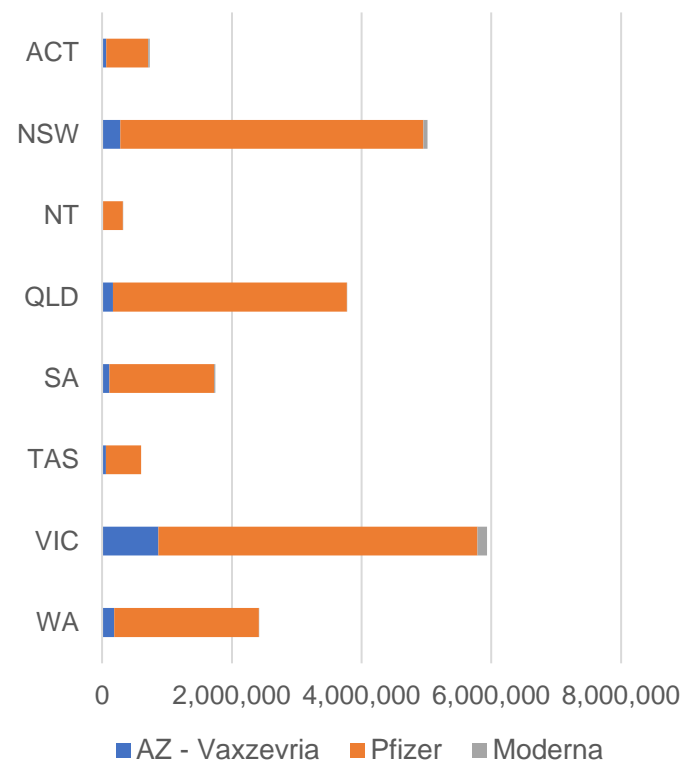
Data is sourced directly from Aged Care Service Providers and is not drawn or closely aligned with data from AIR due to inconsistencies and potential lags in uploading of records.



Data as at:  
20 Mar 2022

# Jurisdiction administered

Total vaccine doses administered in State and Territory clinics as at 20 March



**20,543,332** total vaccine doses administered  
in State and Territory clinics as at 20 March  
+ **20,832** recorded in the last 24 hours  
+ **159,136** recorded in the last 7 days

**NSW**  
**5,017,186**  
(+3,665 daily  
increase)

**VIC**  
**5,936,635**  
(+5,268 daily  
increase)

**QLD**  
**3,772,301**  
(+3,279 daily  
increase)

**WA**  
**2,416,370**  
(+1,904 daily  
increase)

**TAS**  
**601,644**  
(+2,027 daily  
increase)

**SA**  
**1,745,800**  
(+2,860 daily  
increase)

**ACT**  
**734,832**  
(+1,460 daily  
increase)

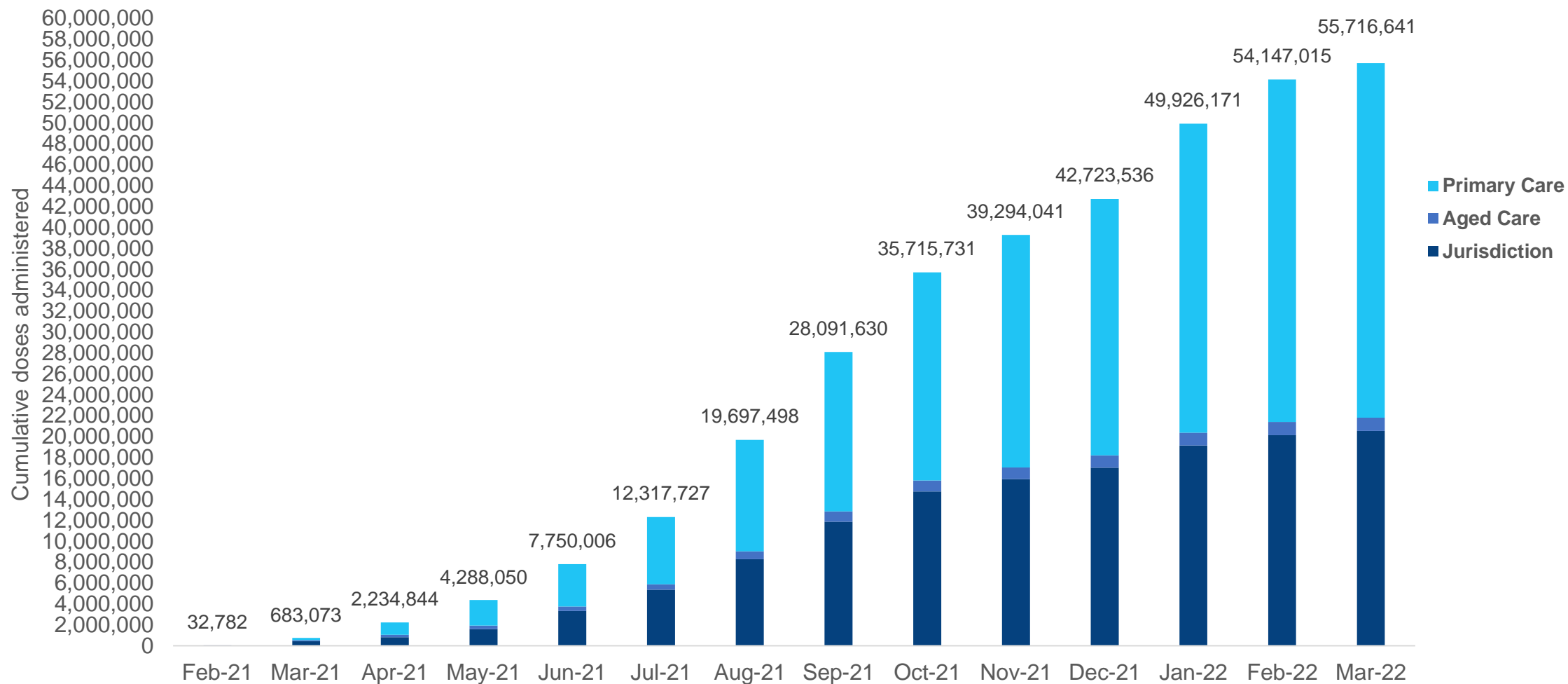
**NT**  
**318,564**  
(+369 daily  
increase)

\*Sourced from the Australian Immunisation Register. Numbers are calculated as difference in daily cumulative reported numbers to allow for historical corrections.

Source: Australian Immunisation Register

# Cumulative doses administered by channel

Data as at:  
20 Mar 2022



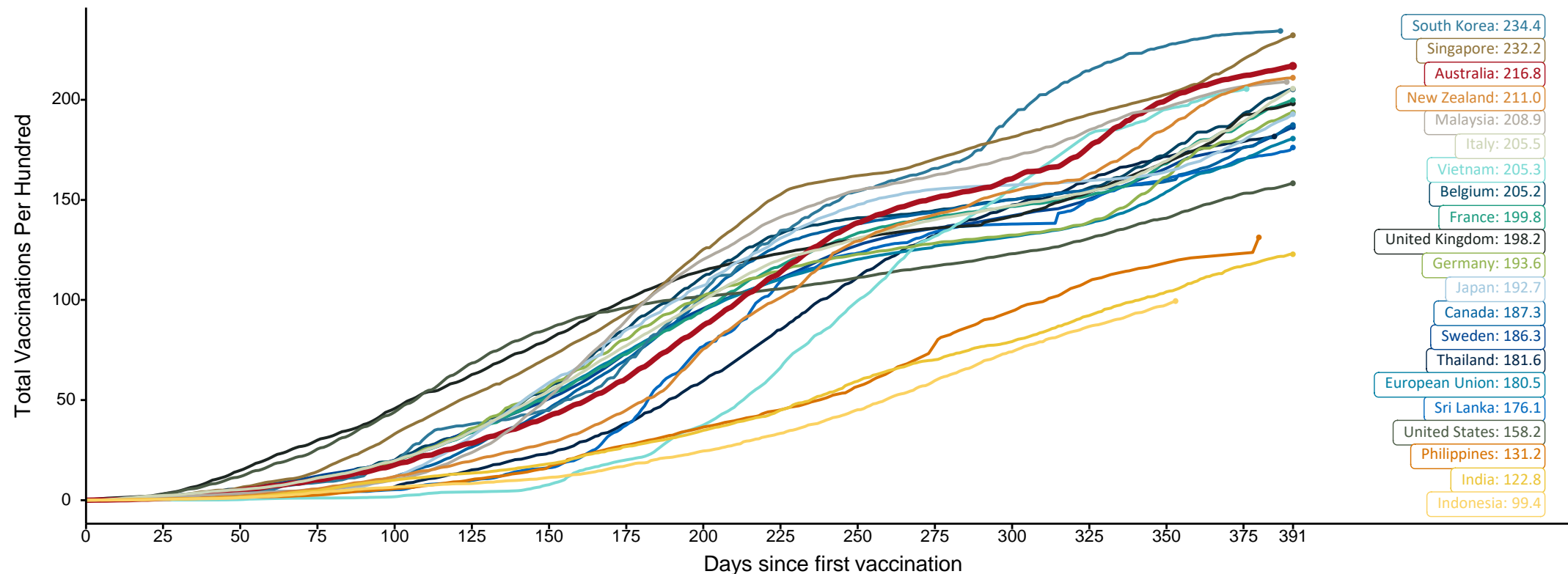
Source: Australian Immunisation Register

## Doses at equivalent stages of rollout (Day 391)

Data as at:  
20 Mar 2022

The x-axis is truncated at the length of Australia's vaccination program. Countries with intermittent reporting have had their doses per 100 imputed to Australia's current stage of rollout. Israel excluded as it is beyond scale of the graph

Cumulative doses administered (20 Mar): **55,716,641**



Note: From 11 January 2022, data for Australia includes all doses administered to people 5 and over. Prior to 11 January, data was for 12 and over.

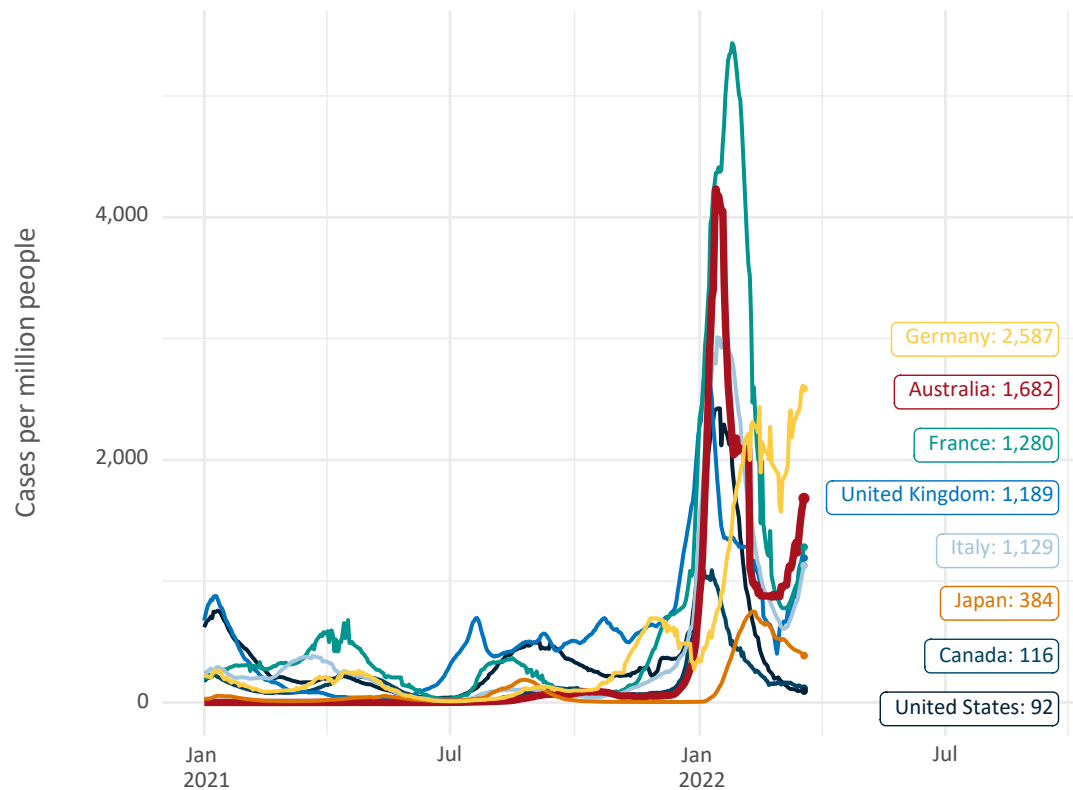
Source: Department of Health (Australia), Our World in Data (international)

Latest data: 20 March

Data as at:  
20 Mar 2022

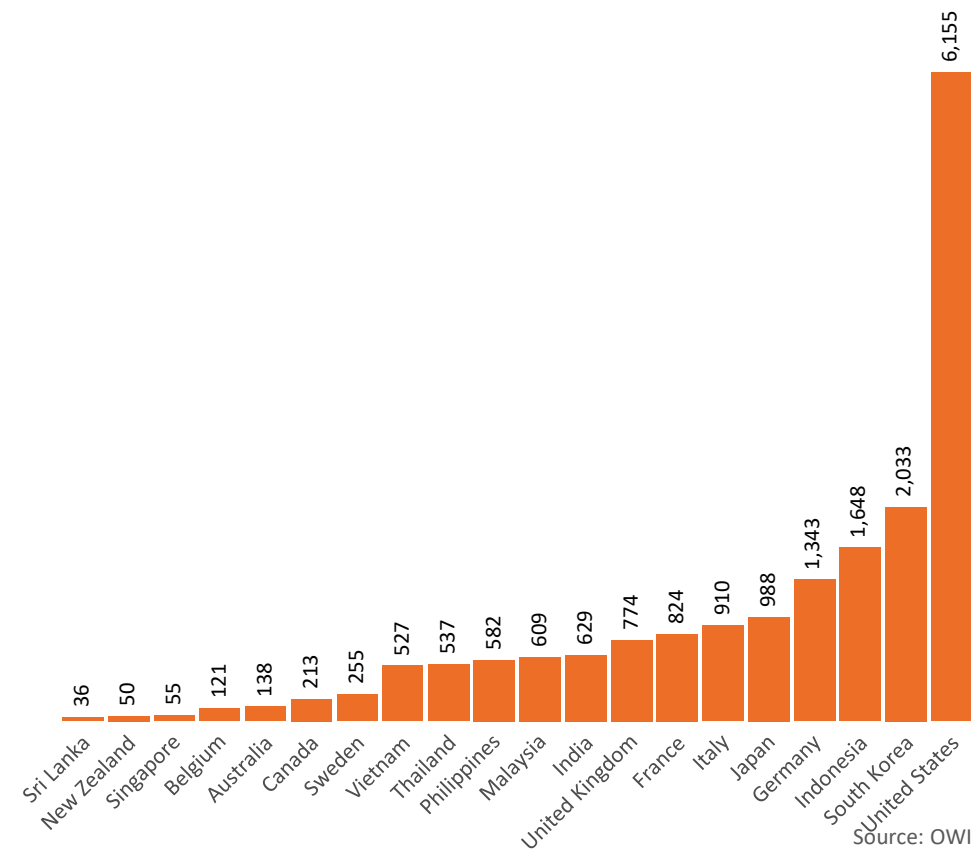
# International data – COVID-19

New daily cases per million in 2021, Australia and G7 countries  
Smoothed - 7 day average



Source: OWID  
Data downloaded: 21 Mar 2022 08:24  
Latest data: 19 Mar 2022

COVID-19 deaths in past 7 days - Australia and select countries



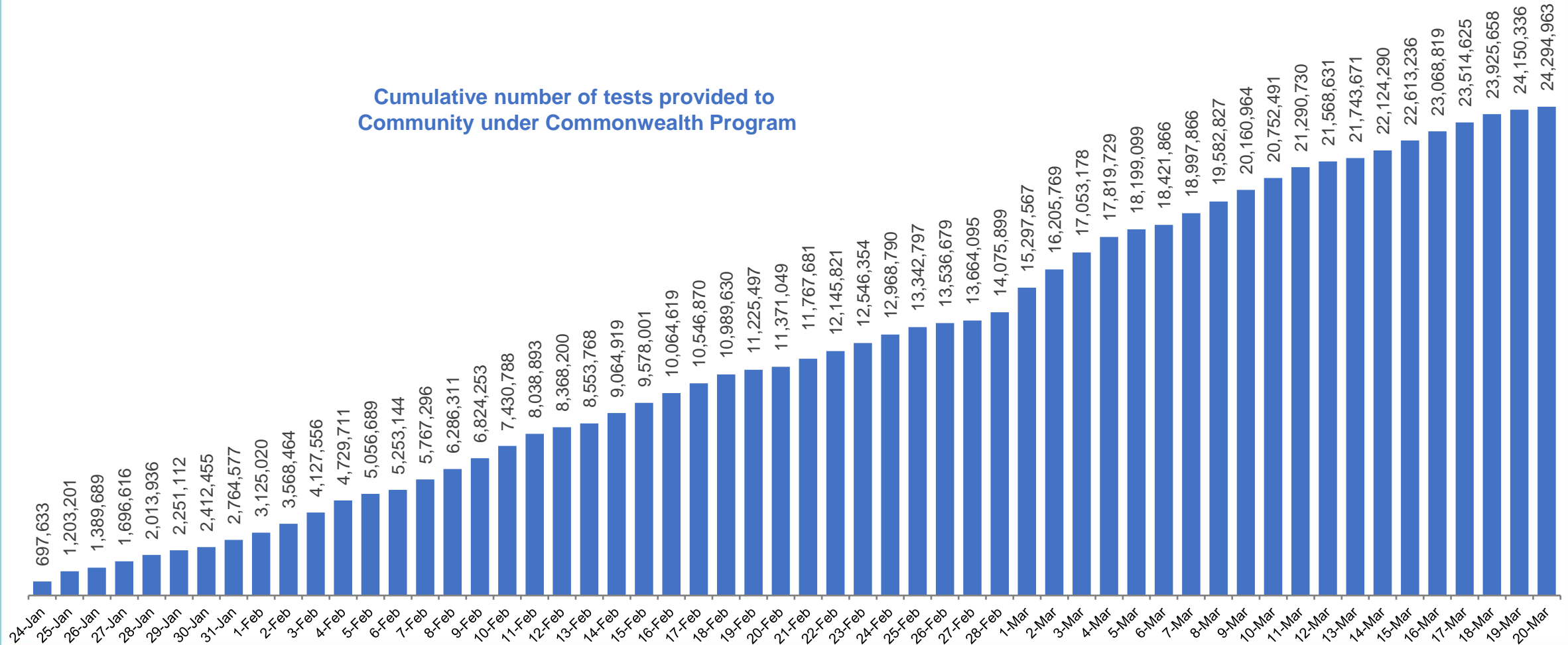
Source: OWID  
Data downloaded: 21 Mar 2022 08:24  
Latest data: 19 Mar 2022

Data as at:  
20 Mar 2022

# Concessional rapid antigen test program

5,612 pharmacies have delivered over 24.2 million rapid antigen tests to more than 3.9m eligible concession card holders under the Government's concessional rapid antigen test program.

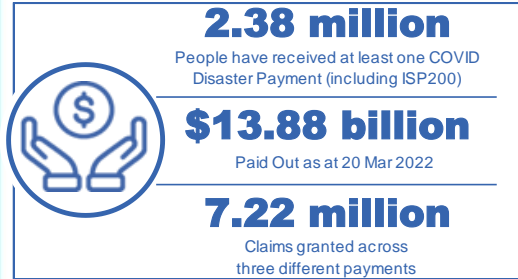
Cumulative number of tests provided to  
Community under Commonwealth Program



# Pandemic Response Payments

Australia's COVID-19  
Vaccine Roadmap

Data as at midnight: 20 Mar 2022  
Updated weekly



<b>COVID Disaster Payment:</b>	5.89 million claims received - 2.19 million individuals paid a total of \$12.59 billion.
<b>\$200 Income Support Payment:</b>	353,000 claims received - 183,000 individuals paid a total of \$268.9 million.
<b>Pandemic Leave Disaster Payment:</b>	1.46 million claims received - 907,000 individuals paid a total of \$1.02 billion.



## COVID Disaster Payment

assisting during a lockdown event in a Commonwealth hotspot.

## Income Support Payment \$200

for income support recipients who lost at least 8 hours of work.

## Pandemic Leave Disaster Payment

for those who have to self-isolate, quarantine or care.

For more information visit:  
[servicesaustralia.gov.au](https://servicesaustralia.gov.au)

## COVID-19 DISASTER PAYMENTS

### Northern Territory

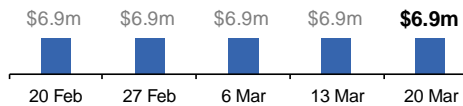
Lockdown (#3) from 16 Nov to 22 Nov  
Claiming period ended 27 Dec

**7,500 people have received at least one COVID Disaster Payment.**

**\$6.9m paid out as at 20 Mar 2022.**

**Nil paid in initial payments in the week ending 20 Mar 2022.**

Cumulative payments made by Territory since activation on 25 Aug 2021.



### Victoria

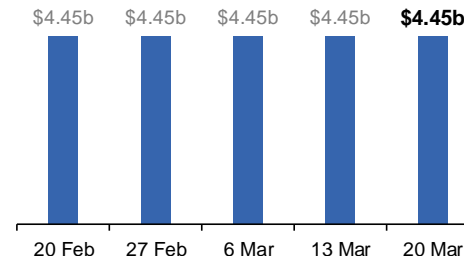
Lockdown (#6) from 6 Aug to 28 Oct  
Claiming period ended 9 Dec

**745,000 people have received at least one COVID Disaster Payment.**

**\$4.45b paid out as at 20 Mar 2022.**

**\$1,000 paid in initial and reoccurring payments in the week ending 20 Mar 2022.**

Cumulative payments made by State since activation on 8 Jun 2021.



### New South Wales

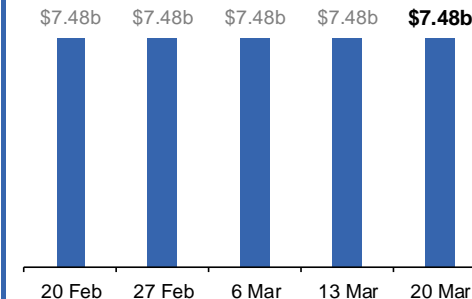
Lockdown from 24 Jun to 10 Oct  
Claiming period ended 27 Nov

**1.08m people have received at least one COVID Disaster Payment.**

**\$7.48b paid out as at 20 Mar 2022.**

**\$450 paid in initial and reoccurring payments in the week ending 20 Mar 2022.**

Cumulative payments made by State since activation on 1 Jul 2021.



### Australian Capital Territory

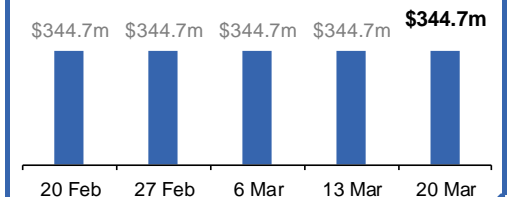
Lockdown from 12 Aug to 14 Oct  
Claiming period ended 25 Nov

**65,000 people have received at least one COVID Disaster Payment.**

**\$344.7m paid out as at 20 Mar 2022.**

**Nil paid in initial and reoccurring payments in the week ending 20 Mar 2022.**

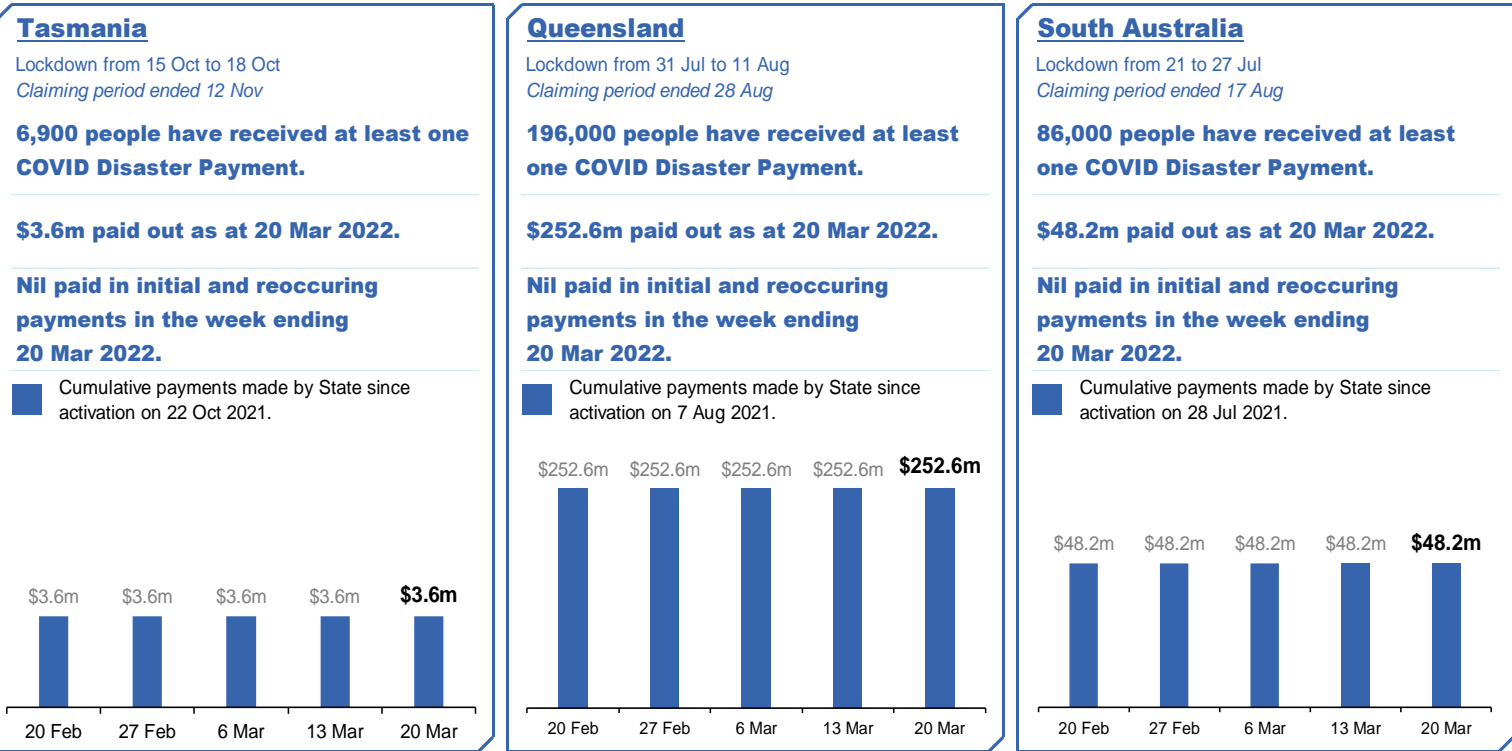
Cumulative payments made by Territory since activation on 20 Aug 2021.



# Pandemic Response Payments (continued)

Data as at midnight: 20 Mar 2022  
Updated weekly

## COVID-19 DISASTER PAYMENTS





# Administration and Utilisation

## Doses as at 20 March 2022

	Ordered	Available	Administered	Stock on Hand at Sites	Estimated Dose Utilisation %
	Up to 20/03/22	Delivered up to 13/03/22 including redistributions	Up to 20/03/22		(see note)
NSW	6,111,672	6,111,272	5,017,186	482,959	92%
VIC	6,986,754	6,985,554	5,936,635	415,254	95%
QLD	4,846,802	4,805,142	3,772,301	552,430	89%
WA	2,641,288	2,633,108	2,416,370	101,939	Fully utilised
SA	2,151,120	2,122,120	1,745,800	164,108	92%
TAS	652,290	646,290	601,644	1,330	Fully utilised
NT	400,184	389,026	318,564	36,215	92%
ACT	651,286	651,186	734,832	17,183	Fully utilised
Jurisdiction delivered total	24,441,396	24,343,698	20,543,332	1,771,417	94%
Commonwealth Aged Care & Disability	1,366,842	1,363,482	1,261,910	6,975	N/A
Commonwealth Primary Care & Other	50,182,760	49,492,734	33,911,399	10,632,709	79%
Total	75,990,998	75,199,914	55,716,641	12,411,101	84%

### About this data

- Ordered – Total doses delivered to sites. Based on logistics provider data. This figure includes doses allocated for administration in the coming week.
- Available – total doses that could have been administered to date, less doses re-distributed from States & Territories to Primary Care or Commonwealth Vaccination Providers (i.e., does not include those deliveries recently received, and intended for use in the coming week).
- Administered – Doses administered as at 20 March 2022.
- Stock on Hand at Sites – Available doses minus Administered doses and a small % wastage.
- The dose utilisation is calculated based on the total doses administered and a small % wastage in line with international standards in relation to total available doses.
- For Commonwealth Vaccination Providers, the doses available for administration is for the full period (up to 20 March 2022).
- Commonwealth Vaccination Providers utilisation is not provided as the in-reach rollout is demand-based.