




Australian Government
Operation COVID Shield

COVID-19 Vaccine Roll-out

20 March 2022


Data as at:
19 Mar 2022

Total vaccine doses



19,929,071
people have had at least one dose

>95%
of people over the age of 16
have had at least one dose



19,570,995
people are fully vaccinated

94.9%
of people over the age of 16 are
fully vaccinated



12,484,446
people over the age of 16
who have received more
than two doses



55,680,095 total vaccine doses administered nationally as at 19 March

+71,177 recorded in the last 24 hours

NSW
17,323,548
(+18,167 daily increase)

VIC
14,691,758
(+20,355 daily increase)

QLD
10,555,483
(+12,240 daily increase)

WA
6,063,269
(+10,538 daily increase)

TAS
1,244,298
(+1,418 daily increase)

SA
3,828,992
(+6,179 daily increase)

ACT
1,430,113
(+1,615 daily increase)

NT
542,634
(+665 daily increase)

*Administration state breakdown indicates state in which a vaccine was administered

**Overall dose count includes instances of more than three doses per person in a small number of cases.

Source: Australian Immunisation Register

Booster Vaccinations

Data as at:
19 Mar 2022



179,717
Indigenous people who have received more than two doses
50.0%
of eligible population (359,492)



160,978
Aged Care Residents who have received more than two doses##
92.8%
of eligible population (173,424)



167,202 | **20,126**
NDIS participants | NDIS residents
who have received more than two doses#
70.6% | **85.7%**
of eligible population (236,000) | of eligible population (23,000)



12,484,446 total people who have received more than two doses nationally
+28,521 recorded in the last 24 hours
66.4% of people who are eligible (18,804,081) have received more than two doses

NSW	People	% of Eligible
Cumulative	3,833,017	62.3%
Daily increase	7,097	

VIC	People	% of Eligible
Cumulative	3,387,977	67.7%
Daily increase	7,310	

QLD	People	% of Eligible
Cumulative	2,153,520	61.1%
Daily increase	4,481	

WA	People	% of Eligible
Cumulative	1,496,954	85.2%
Daily increase	4,877	

SA	People	% of Eligible
Cumulative	882,737	70.3%
Daily increase	2,319	

TAS	People	% of Eligible
Cumulative	279,980	68.9%
Daily increase	1,169	

ACT	People	% of Eligible
Cumulative	252,304	73.5%
Daily increase	445	

NT	People	% of Eligible
Cumulative	104,714	66.1%
Daily increase	273	

93,243

doses administered to persons residing in other territories or with missing residential information

*People may belong to multiple groups and could be represented in the above breakdowns multiple times.

NDIS participants data as at 17 March 2022.

Aged Care Residents data as at 18 March 2022.

Source: Australian Immunisation Register

Data as at:
19 Mar 2022

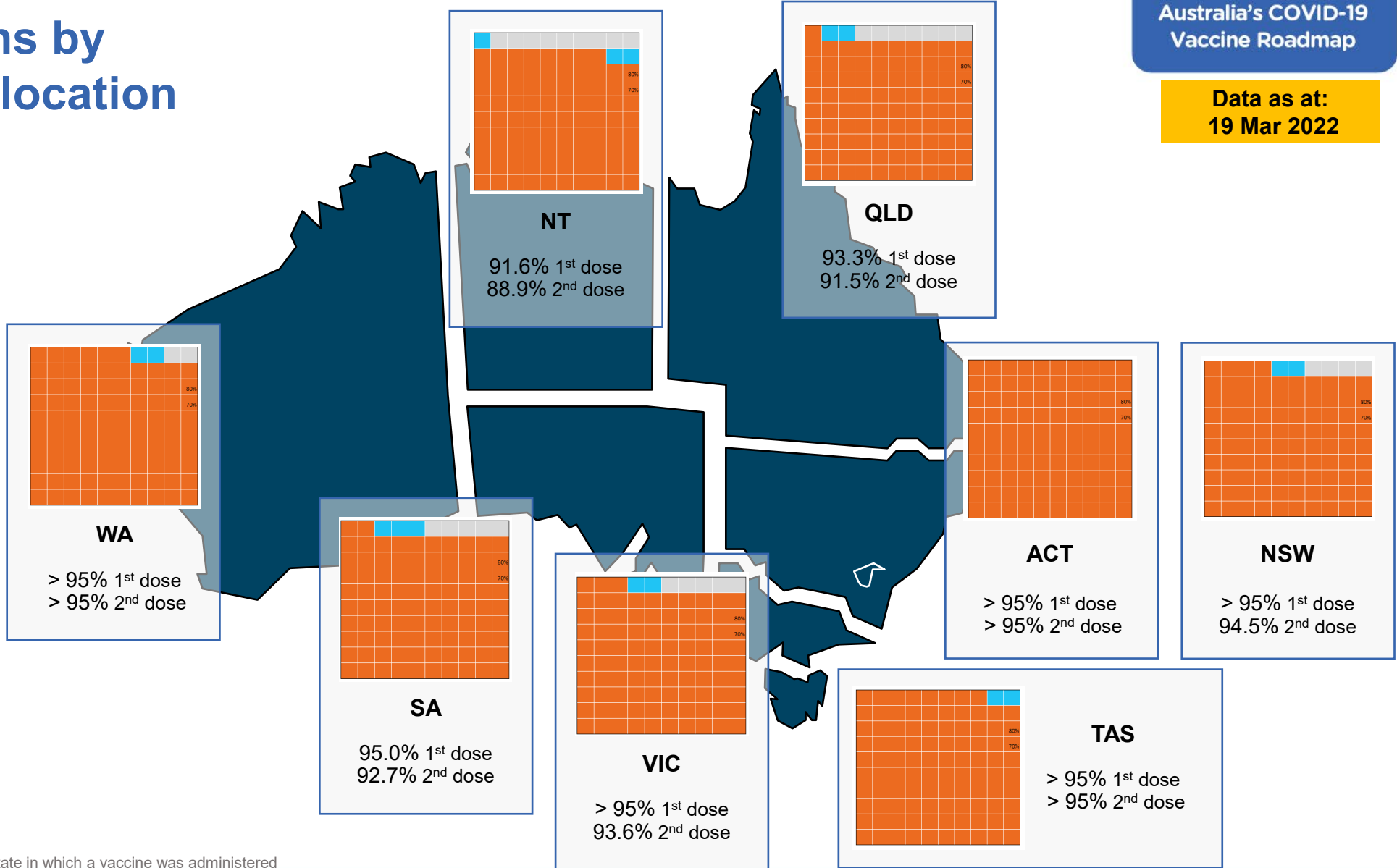
Vaccinations by residential location

First doses

Age Today	4 weeks ago	8 weeks ago
16+	>95%	>95%
50+	>95%	>95%
70+	>95%	>95%

Fully vaccinated

Age Today	4 weeks ago	8 weeks ago
16+	94.9%	94.4%
50+	>95%	>95%
70+	>95%	>95%



*Residential state may differ from the state in which a vaccine was administered

Commonwealth and Jurisdiction vaccine doses administered

Data as at:
19 Mar 2022



55,680,095 total vaccine doses administered nationally as at 19 March

+ 71,177 recorded in the last 24 hours



20,522,500

doses administered by state and territory facilities

+ 30,495

recorded in the last 24 hours

NSW	Jurisdictions	Commonwealth
Cumulative	5,013,521	12,310,027
Daily increase	5,968	12,199

TAS	Jurisdictions	Commonwealth
Cumulative	599,617	644,681
Daily increase	656	762

VIC	Jurisdictions	Commonwealth
Cumulative	5,931,367	8,760,391
Daily increase	9,124	11,231

SA	Jurisdictions	Commonwealth
Cumulative	1,742,940	2,086,052
Daily increase	3,805	2,374

QLD	Jurisdictions	Commonwealth
Cumulative	3,769,022	6,786,461
Daily increase	6,197	6,043

ACT	Jurisdictions	Commonwealth
Cumulative	733,372	696,741
Daily increase	639	976

WA	Jurisdictions	Commonwealth
Cumulative	2,414,466	3,648,803
Daily increase	3,549	6,989

NT	Jurisdictions	Commonwealth
Cumulative	318,195	224,439
Daily increase	557	108



35,157,595

doses administered by commonwealth facilities

+ 40,682

recorded in the last 24 hours

33,895,905 total vaccine doses administered in primary care settings

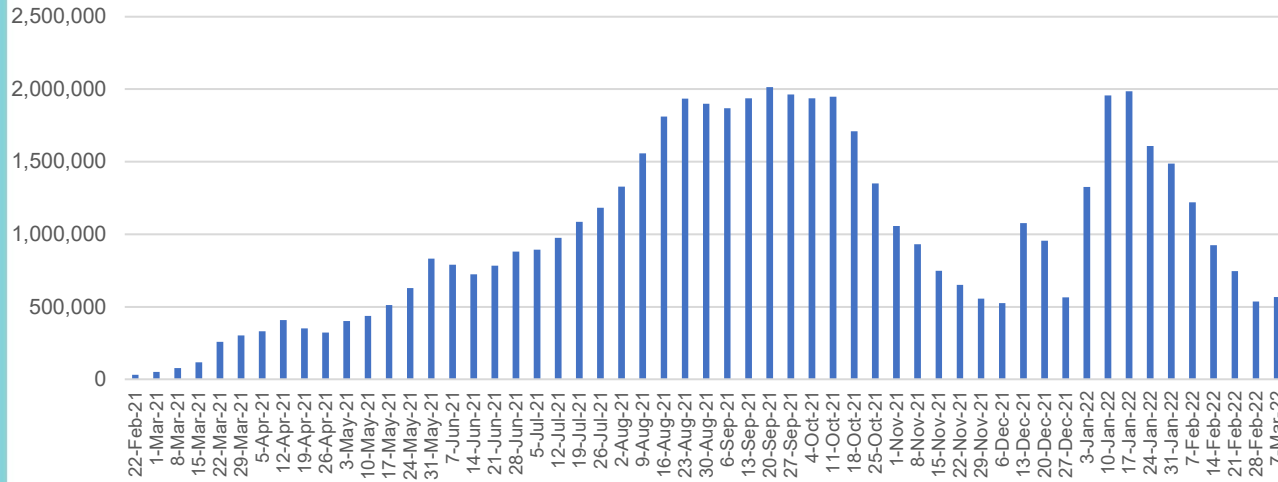
1,261,690 total vaccine doses administered in aged care and disability settings

Vaccine milestone charts

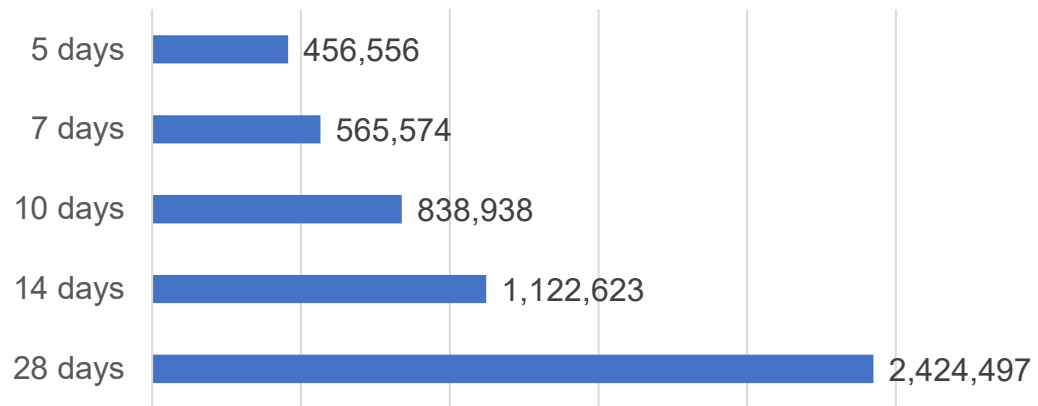
Data as at:
19 Mar 2022

Australia's COVID-19
Vaccine Roadmap

Doses Administered by Week

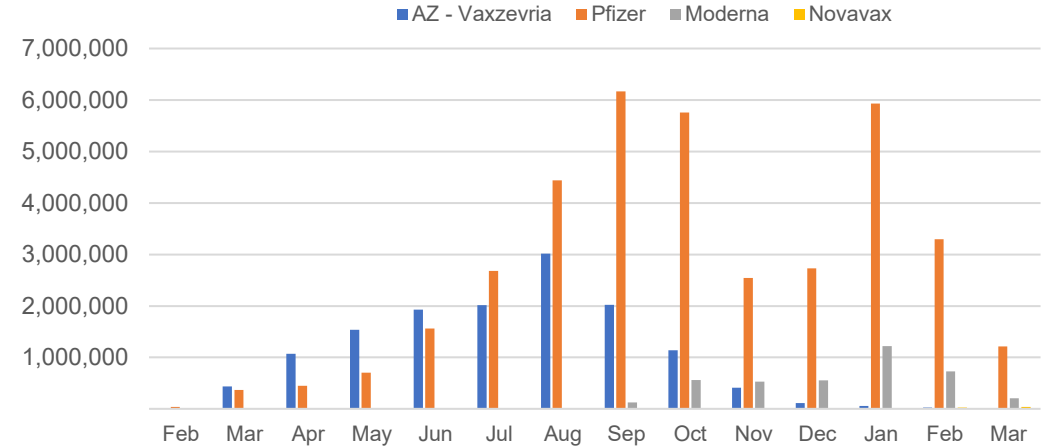


Doses Reported

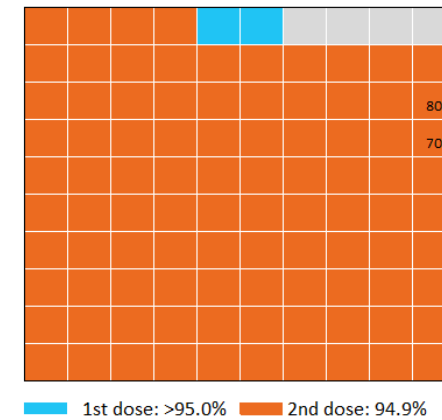


*Sourced from the Australian Immunisation Register.

Doses by administration month and vaccine type



Eligible population percentage coverage



*Each square represents 1% of the national population. Squares are filled as milestones are achieved.

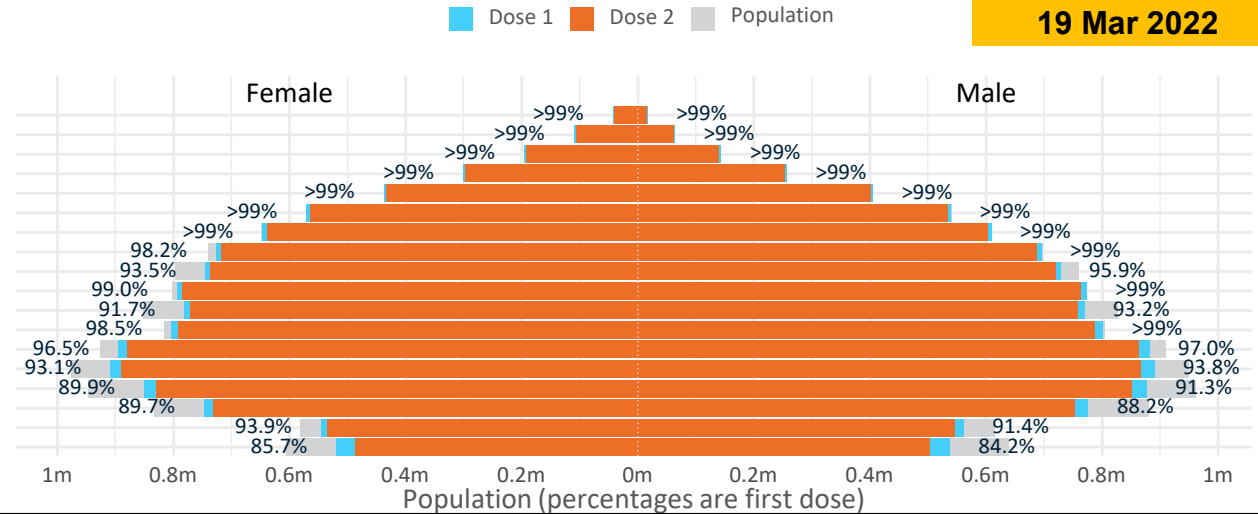
Doses by age and sex

First and second doses by age and sex

	16+	50+	12-15	5-11
Dose 1	96.65% (19,929,071 doses / 20,619,959 people)	>99% (8,807,361 doses / 8,749,703 people)	84.94% (1,056,639 doses / 1,243,990 people)	51.67% (1,176,324 doses / 2,276,638 people)
Dose 2	94.91% (19,570,995 doses / 20,619,959 people)	>99% (8,692,988 doses / 8,749,703 people)	79.63% (990,548 doses / 1,243,990 people)	16.24% (369,725 doses / 2,276,638 people)

Data as at:
19 Mar 2022

Age	Dose 1	Dose 2
95+	59,708 (>99%)	56,297 (>99%)
90-94	173,925 (>99%)	168,052 (>99%)
85-89	339,190 (>99%)	331,759 (>99%)
80-84	557,848 (>99%)	549,972 (>99%)
75-79	842,623 (>99%)	833,589 (>99%)
70-74	1,110,957 (>99%)	1,099,321 (>99%)
65-69	1,257,176 (>99%)	1,242,179 (98.7%)
60-64	1,423,311 (>99%)	1,405,961 (97.9%)
55-59	1,474,427 (94.8%)	1,456,626 (93.6%)
50-54	1,568,196 (>99%)	1,549,232 (>99%)
45-49	1,551,595 (92.5%)	1,530,650 (91.3%)
40-44	1,607,838 (>99%)	1,581,045 (97.6%)
35-39	1,780,463 (97.0%)	1,745,674 (95.1%)
30-34	1,806,467 (93.9%)	1,762,024 (91.6%)
25-29	1,737,401 (91.1%)	1,688,119 (88.5%)
20-24	1,529,620 (89.3%)	1,488,606 (86.9%)
16-19	1,108,326 (92.7%)	1,081,889 (90.5%)
12-15	1,056,639 (84.9%)	990,548 (79.6%)

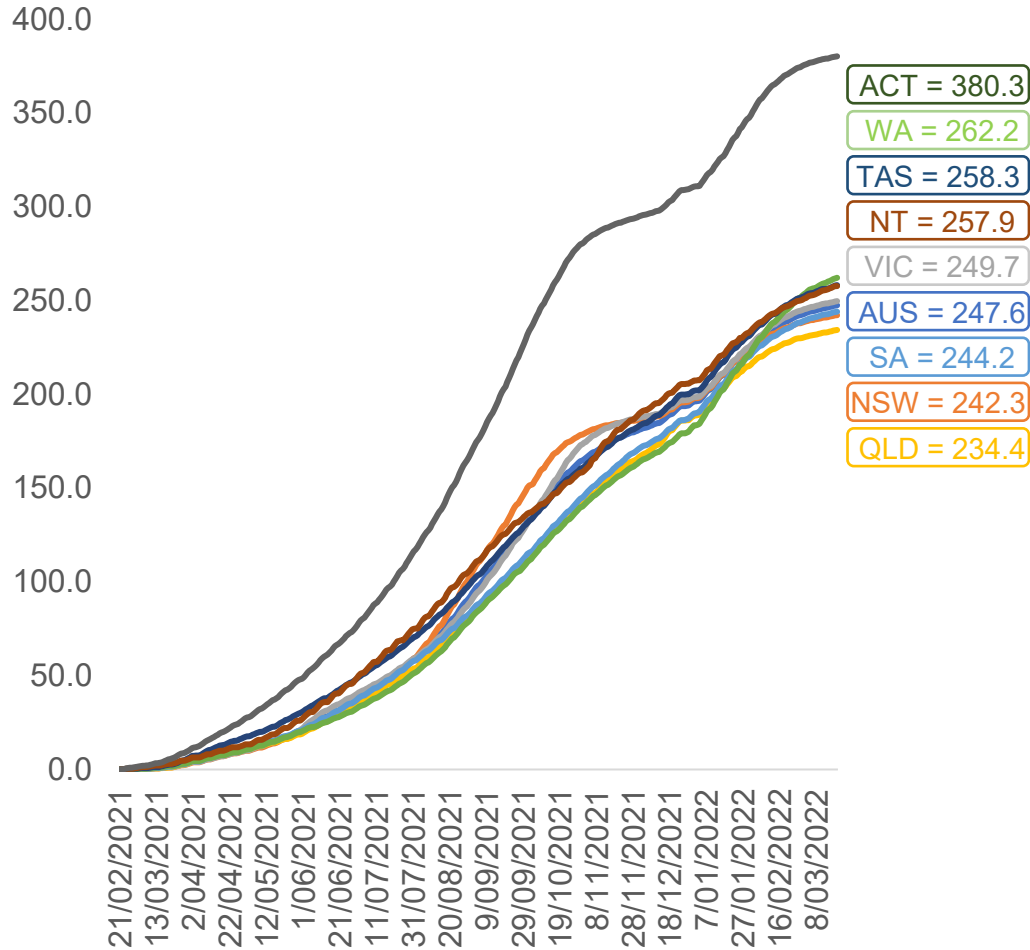


	AUS	ACT	NSW	NT	QLD	SA	TAS	VIC	WA
16 and over - dose 1	19,929,071	351,344	6,300,365	174,481	3,836,119	1,368,210	442,912	5,140,554	2,080,547
16 and over - dose 2	19,570,995	345,918	6,204,943	169,495	3,762,537	1,334,822	432,999	5,064,046	2,038,557
16 and over - population	20,619,959*	344,037	6,565,651	190,571	4,112,707	1,440,400	440,172	5,407,574	2,114,978
16 and over % with dose 1	96.65%	>99%	95.96%	91.56%	93.27%	94.99%	>99%	95.06%	98.37%
16 and over % with dose 2	94.91%	>99%	94.51%	88.94%	91.49%	92.67%	98.37%	93.65%	96.39%
5 to 11 - dose 1	1,176,324	31,548	350,018	12,986	206,552	83,231	28,205	321,469	135,091
5 to 11 - dose 2	369,725	12,277	119,007	3,485	69,867	25,695	10,087	94,873	32,856
5 to 11 - population	2,276,638	39,789	716,460	24,750	478,731	148,816	45,033	578,499	244,154
5 to 11 % with dose 1	51.67%	79.29%	48.85%	52.47%	43.15%	55.93%	62.63%	55.57%	55.33%
5 to 11 % with dose 2	16.24%	30.86%	16.61%	14.08%	14.59%	17.27%	22.40%	16.40%	13.46%
12 to 15 - dose 1	1,056,639	20,085	326,092	10,912	207,760	68,472	22,923	276,276	114,995
12 to 15 - dose 2	990,548	19,232	309,410	9,721	192,842	64,093	21,598	262,047	103,718
12 to 15 - population	1,243,990	19,693	390,330	13,060	270,146	82,747	26,308	308,611	132,869
12 to 15 % with dose 1	84.94%	>99%	83.54%	83.55%	76.91%	82.75%	87.13%	89.52%	86.55%
12 to 15 % with dose 2	79.63%	97.66%	79.27%	74.43%	71.38%	77.46%	82.10%	84.91%	78.06%

*National population will not equal sum of listed jurisdictions due to a small number of people counted in national population residing in some 'other' territories. Sum of state doses will not add to national total as some records are unable to be geocoded to a State or Territory.
Doses sourced from Australian Immunisation Register, population from ABS ERP June 2020

Vaccinations by location

Cumulative total doses administered vs eligible state populations*

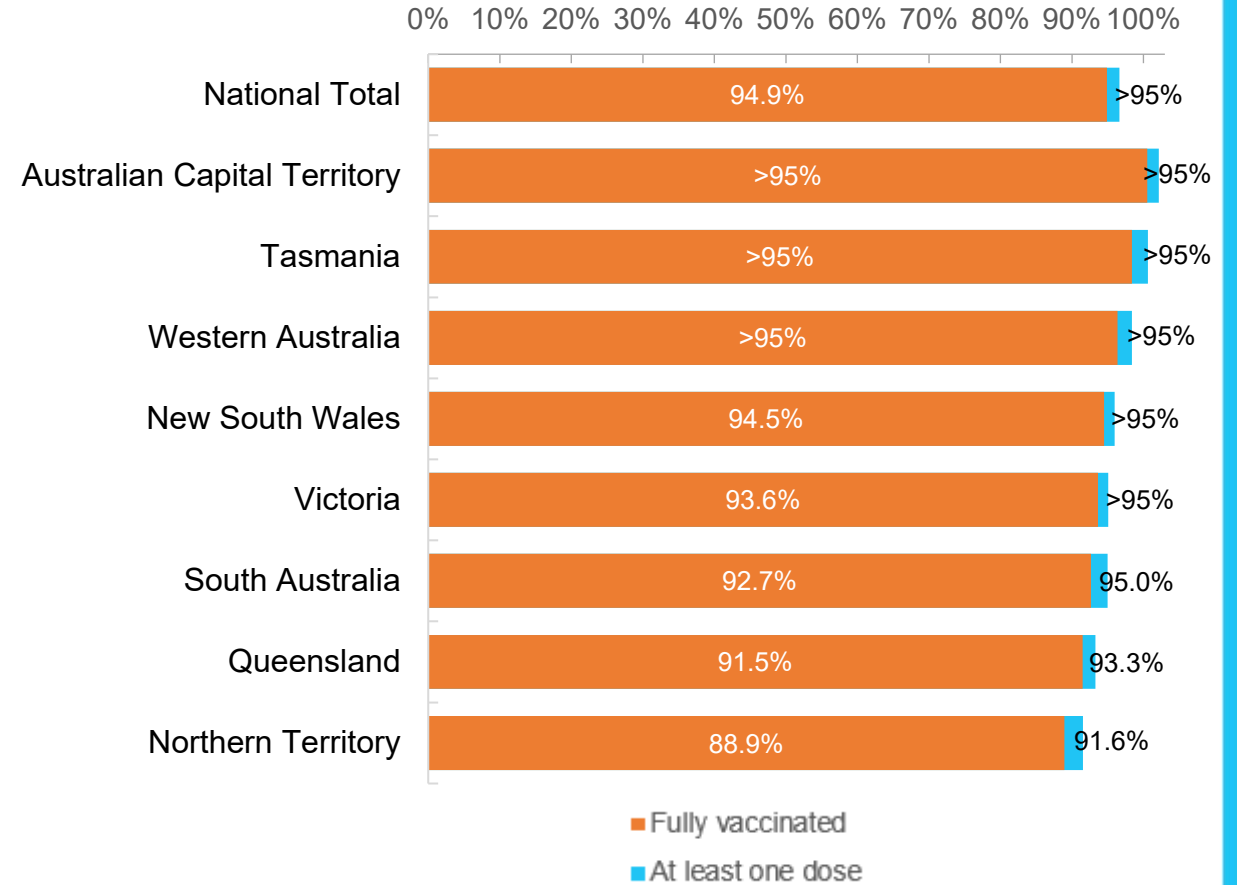


*Not an indication of percentage vaccinated, numbers will exceed 100 due to multiple doses required per person of the population. All doses are included for those aged 12 and above, and are based on vaccination provider location.

Data as at:
19 Mar 2022

Australia's COVID-19
Vaccine Roadmap

First and Second Doses by residential location



Aboriginal and Torres Strait Islander peoples

Number of people vaccinated

Data as at:
15 Mar 2022
Updated weekly

Australia's COVID-19
Vaccine Roadmap



434,708

people over the age of 16
have had at least one dose

83.8%

of people over the age of 16
have had at least one dose



411,587

people over the age of 16
are fully vaccinated

79.4%

of people over the age of 16 are
fully vaccinated



People aged 12 – 15 years

48,327

41,857

68.1%

59.0%

At least one dose

Fully vaccinated

177 Aboriginal community controlled health services (ACCHS)

0#	50	27	44	12	3	21	20
ACT	NSW	NT	QLD	SA	TAS	VIC	WA

Medicare Address State ^{##}	Individuals Dose 1	Individuals Dose 1 %	Individuals Dose 2	Individuals Dose 2 %
Australian Capital Territory	4,837	91.3%	4,713	88.9%
New South Wales	134,608	86.6%	131,283	84.5%
Northern Territory	42,154	89.1%	39,604	83.7%
Queensland	114,770	80.9%	108,282	76.3%
South Australia	19,708	79.3%	18,053	72.7%
Tasmania	13,965	88.4%	13,474	85.3%
Victoria	35,197	89.5%	34,308	87.3%
Western Australia	52,750	84.0%	47,087	75.0%
Unknown/Other Territories	16,719	64.7%	14,783	57.3%
Totals	434,708	83.8%	411,587	79.4%

Source: Australian Immunisation Register

*Identifying as Aboriginal and Torres Strait Islander is optional and the estimated population may be under reported.

**Includes all Aboriginal and Torres Strait Islander peoples who have received a vaccination, not limited to those administered in an ACCHS setting

#ACCHS in the ACT are currently operating as a Commonwealth Vaccine Clinics so not included to avoid double counting

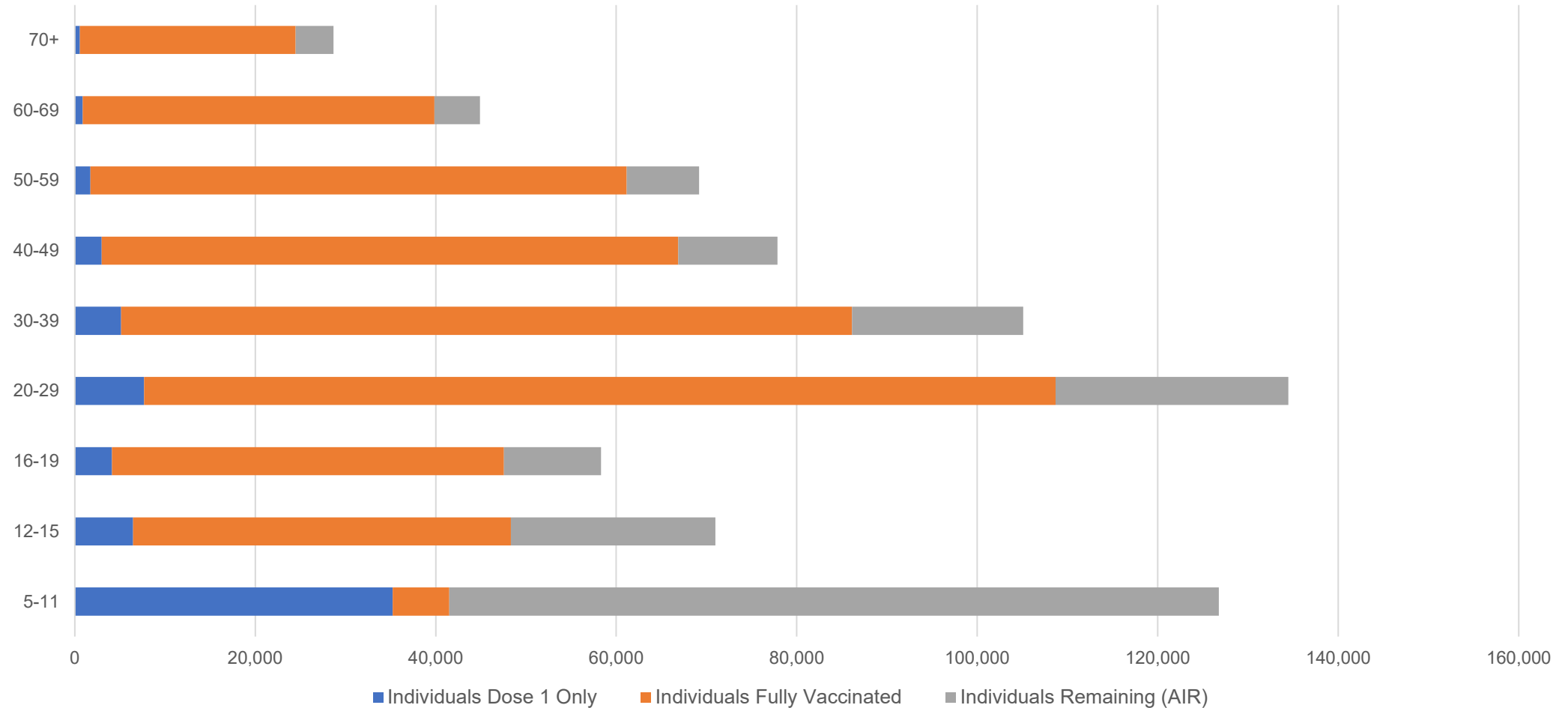
##The above table includes all identified Aboriginal and Torres Strait Islander people who are aged 16 and above by their state of residence.

Aboriginal and Torres Strait Islander peoples

Number of people vaccinated by age

Data as at:
15 Mar 2022
Updated weekly

Australia's COVID-19
Vaccine Roadmap



Source: Australian Immunisation Register

Commonwealth primary care

Data as at:
19 Mar 2022

Australia's COVID-19
Vaccine Roadmap



Primary care vaccine administration sites

5,776	127	177	3,558
GPs	CVCs	ACCHS	Pharmacies



33,895,905 total vaccine doses administered
primary care settings as at 19 March

+ 40,394 recorded in the last 24 hours

Primary care vaccinations by provider type

	Doses administered	Daily increase	7 day increase
General Practice* includes other Commonwealth	27,502,179	26,639	268,050
Pharmacy	6,393,726	13,755	137,597

NSW
11,765,983
(+11,862 daily increase)

VIC
8,455,878
(+10,978 daily increase)

QLD
6,515,774
(+6,013 daily increase)

WA
3,522,661
(+6,825 daily increase)

TAS
625,391
(+712 daily increase)

SA
2,009,757
(+2,299 daily increase)

ACT
533,859
(+688 daily increase)

NT
203,567
(+79 daily increase)

263,035

doses administered to persons residing in other territories or with missing residential information

*General practice includes Commonwealth Vaccination Clinics, Aboriginal Community Health Centres, Royal Flying Doctor Service and other Commonwealth vaccination facilities

Source: Australian Immunisation Register

Data as at:
19 Mar 2022

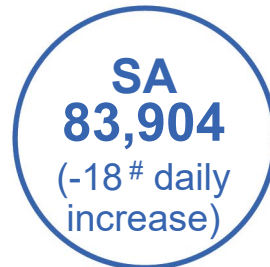
Commonwealth aged care and disability doses administered



1,261,690 (+ 288 last 24 hours)

Total vaccine doses administered in aged care and disability facilities as at 19 March

Number of doses administered as part of the Commonwealth aged and disability care rollout



33,862

doses administered to persons residing in other territories or with missing residential information

*Sourced from the Australian Immunisation Register. Includes all persons vaccinated at participating residential aged care, disability and related industry settings.

**State level breakdown indicates the residential location and may not align to the state in which the vaccination occurred.

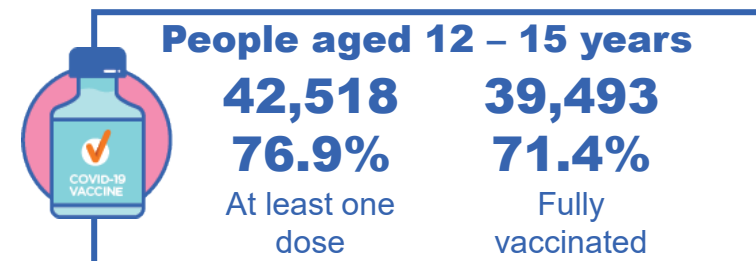
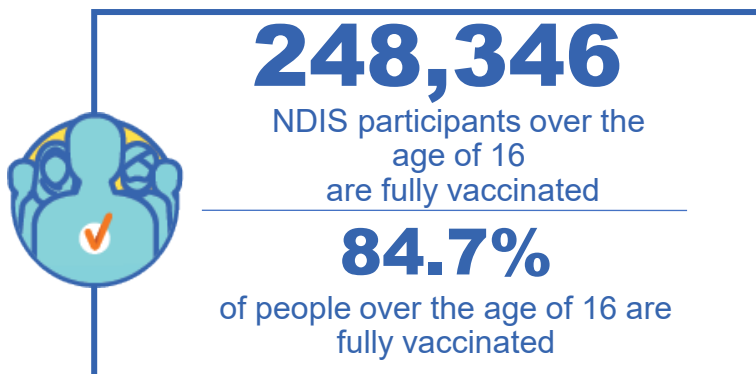
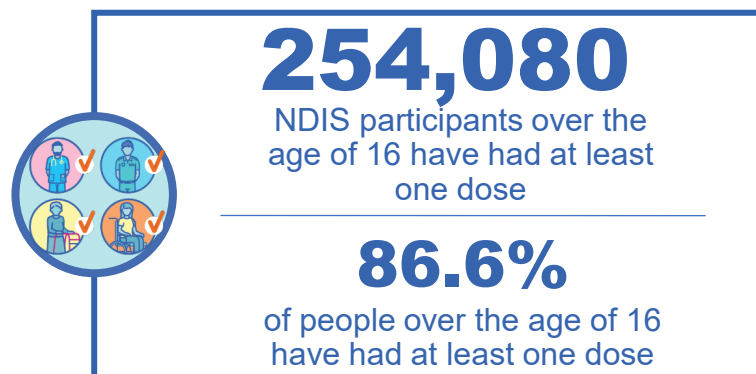
Numbers are calculated as difference in daily cumulative reported numbers to allow for historical corrections in all data sources. This can occasionally result in negative numbers, such as for NSW, VIC and SA, where historical details about doses have been updated.

Source: Australian Immunisation Register

National Disability Insurance Scheme (NDIS) reported vaccinations

Data as at:
17 March 2022
Updated weekly

Australia's COVID-19
Vaccine Roadmap



NDIS participant vaccinations

	People aged 16+ with at least one dose	People aged 16+ fully vaccinated	% People aged 16+ with at least one dose	% People aged 16+ fully vaccinated
ACT	4,816	4,745	88.8%	87.5%
NSW	78,269	76,929	87.2%	85.7%
NT	2,203	2,114	77.2%	74.1%
QLD	49,949	48,746	84.9%	82.9%
SA	20,683	20,050	84.3%	81.7%
TAS	6,366	6,176	86.6%	84.0%
VIC	67,692	66,368	87.9%	86.2%
WA	24,102	23,218	87.6%	84.3%
National	254,080	248,346	86.6%	84.7%

Source: Linkage between National Disability Insurance Agency data and the Australian Immunisation Register. Total NDIS participant numbers as at 28th February. Australian Immunisation Register data as at 16 March. Includes all participants regardless of residence type.

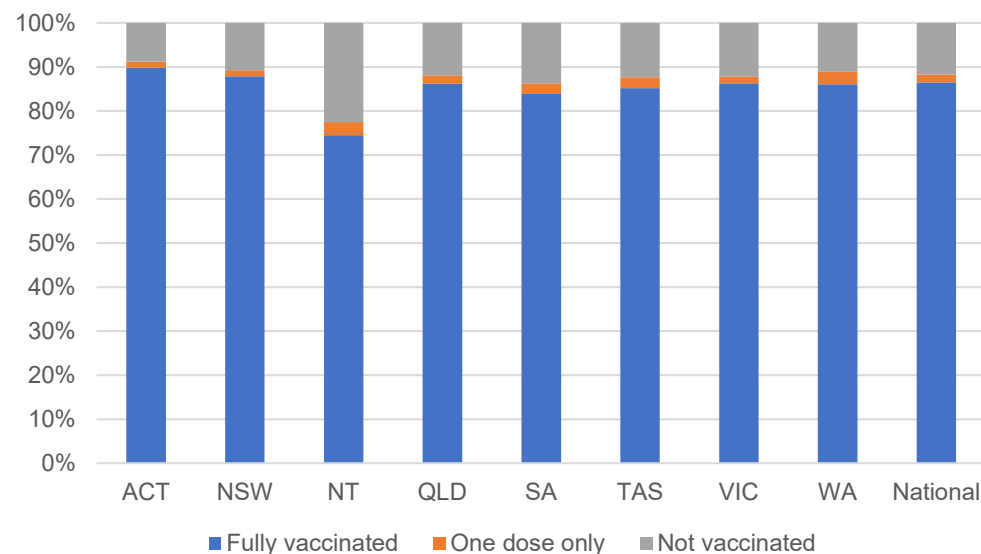
National Disability Insurance Scheme (NDIS) reported vaccinations

Data as at:
17 March 2022
Updated Weekly

Australia's COVID-19
Vaccine Roadmap

NATIONAL	Total people with at least one dose	People fully vaccinated	Total number of individuals in cohort	% People with at least one dose	% People fully vaccinated
NDIS participants living in disability accommodation	20,594	20,201	23,352	88.2%	86.5%

NDIS participants in disability and aged care accommodation



Source: Linkage between National Disability Insurance Agency data and the Australian Immunisation Register. Includes participants residing in disability accommodation only.

Source: Total NDIS participant numbers as at 28th February. Participant data as at 16 March. Australian Immunisation Register data as at 16 March. Worker data as at 17 March.

NDIS workforce vaccinations

	NDIS workers with at least one dose	NDIS workers fully vaccinated	% NDIS workers with at least one dose	% NDIS workers fully vaccinated
NSW	120,409	117,272	98.1%	95.5%
VIC	116,047	109,512	98.3%	92.7%
QLD	69,192	68,334	97.4%	96.2%
WA	32,695	30,144	98.5%	90.8%
SA	35,081	31,596	98.2%	88.4%
TAS	10,794	10,495	99.7%	96.9%
ACT	3,550	3,519	99.6%	98.8%
NT	3,477	3,353	99.7%	96.1%
TOTAL	391,245	374,225	98.1%	93.9%

Source: the NDIS Commission has established a requirement for registered NDIS providers who provide intensive disability support services to report on the vaccination status of workers they employ, or otherwise engage, to deliver NDIS-funded supports and services, and who are required to be vaccinated in accordance with in-force state and territory public health orders. The statistics reflect data reported to the NDIS Commission by registered NDIS providers and should be considered indicative and subject to change

Note: Some registered NDIS providers are yet to report on the vaccination status of their workforce. The NDIS Commission is working with those providers around reporting requirements.

Remaining workers not included include those exempt from vaccination requirements, workers whose vaccination status is not yet verified by the provider (such as workers on leave) and provider reporting anomalies.

Residential aged care vaccination rollout

Data as at: 17 Mar 2022
Updated weekly

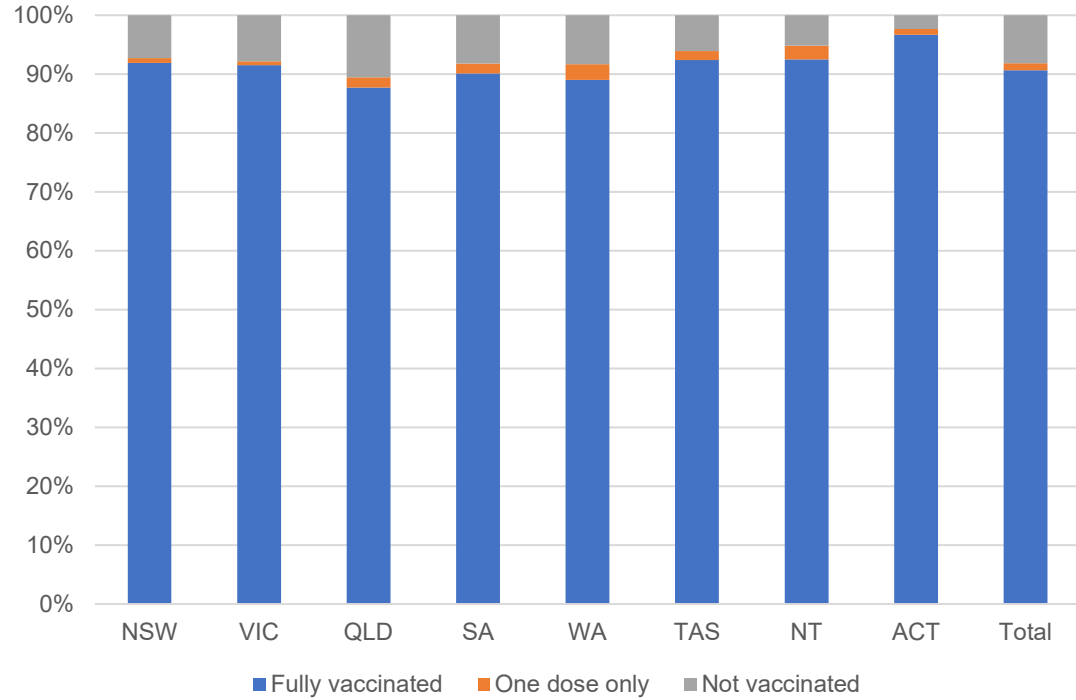
Residential aged care facilities status

100%
Commonwealth facilities visited (2,537 planned sites)

173,424
People fully vaccinated

175,751
People with at least one dose

Aged care resident vaccinations



Aged care worker vaccinations

Jurisdictions	Total workers with at least one dose	Workers fully vaccinated	% Workers with at least one dose	% Workers fully vaccinated
NSW	78,141	78,131	96.7%	96.7%
VIC	66,947	66,946	97.3%	97.3%
QLD	48,022	48,015	97.8%	97.8%
SA	26,506	26,479	97.7%	97.6%
WA	23,931	23,926	99.7%	99.6%
TAS	7,773	7,773	100.0%	100.0%
NT	833	833	100.0%	100.0%
ACT	3,061	3,061	100.0%	100.0%
Total	255,214	255,164	97.6%	97.6%

Source: My Aged Care Portal vaccination progress

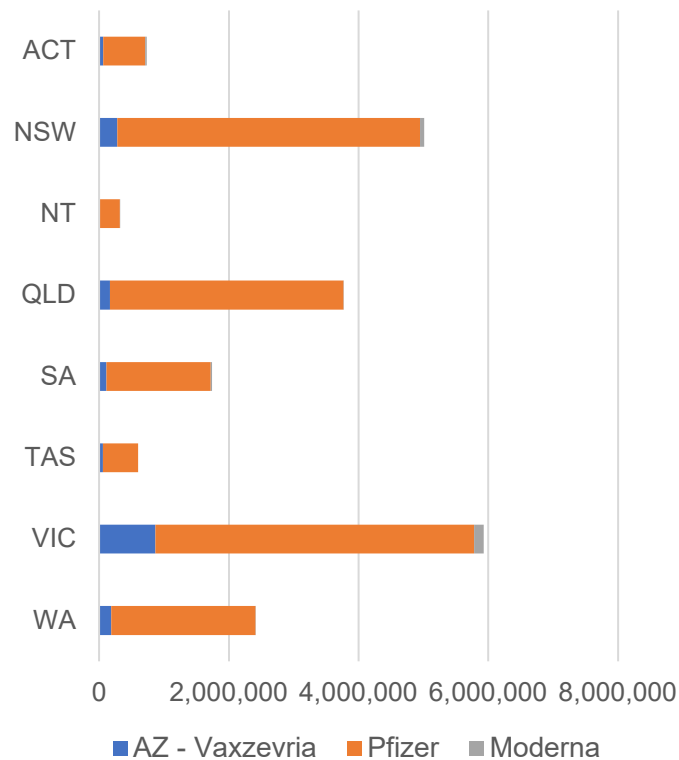
*Status updates are provided by facilities at least once per week. Reporting is updated Monday to Friday to encompass different facility updates being made on different days.

Data is sourced directly from Aged Care Service Providers and is not drawn or closely aligned with data from AIR due to inconsistencies and potential lags in uploading of records.

Data as at:
19 Mar 2022

Jurisdiction administered

Total vaccine doses administered in State and Territory clinics as at 19 March



20,522,500 total vaccine doses administered in State and Territory clinics as at 19 March
 + **30,495** recorded in the last 24 hours
 + **157,295** recorded in the last 7 days

NSW
5,013,521
 (+5,968 daily increase)

VIC
5,931,367
 (+9,124 daily increase)

QLD
3,769,022
 (+6,197 daily increase)

WA
2,414,466
 (+3,549 daily increase)

TAS
599,617
 (+656 daily increase)

SA
1,742,940
 (+3,805 daily increase)

ACT
733,372
 (+639 daily increase)

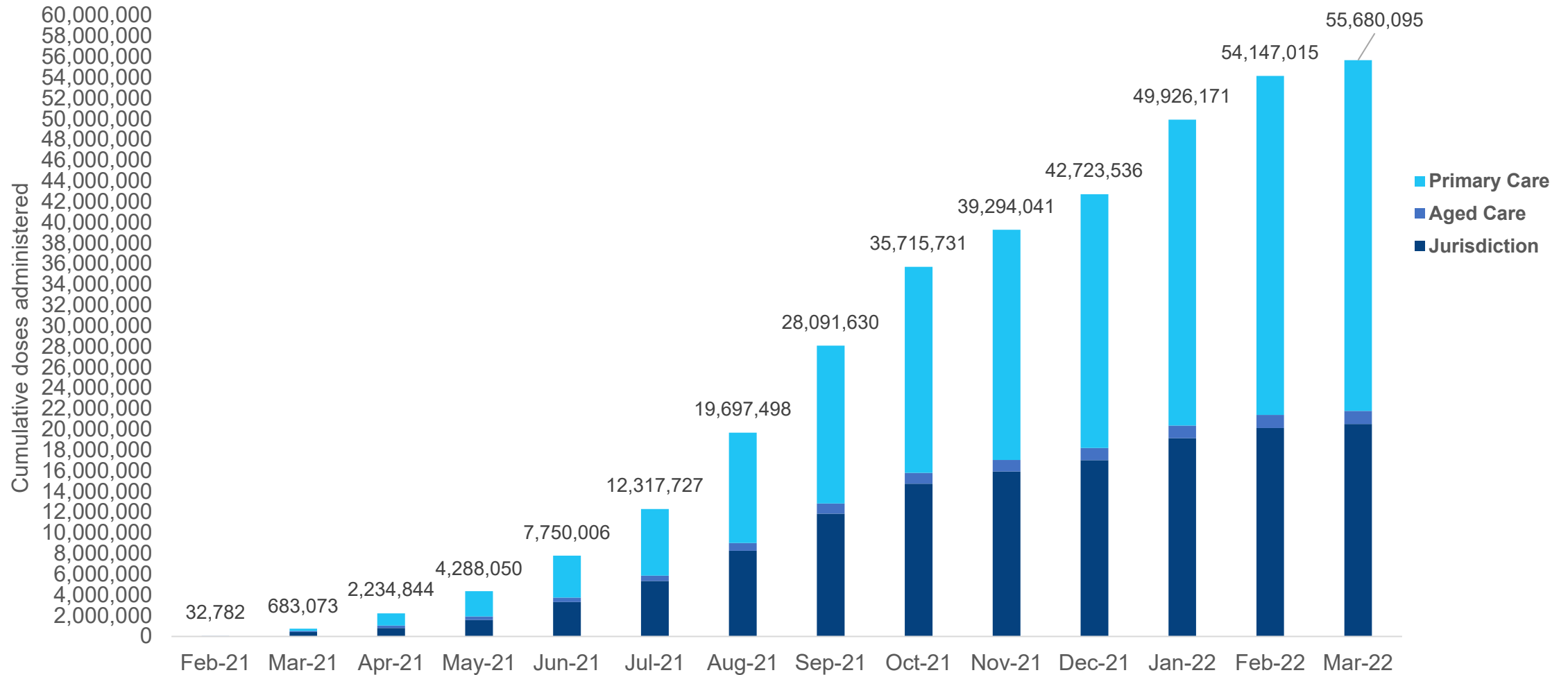
NT
318,195
 (+557 daily increase)

*Sourced from the Australian Immunisation Register. Numbers are calculated as difference in daily cumulative reported numbers to allow for historical corrections.

Source: Australian Immunisation Register

Data as at:
19 Mar 2022

Cumulative doses administered by channel



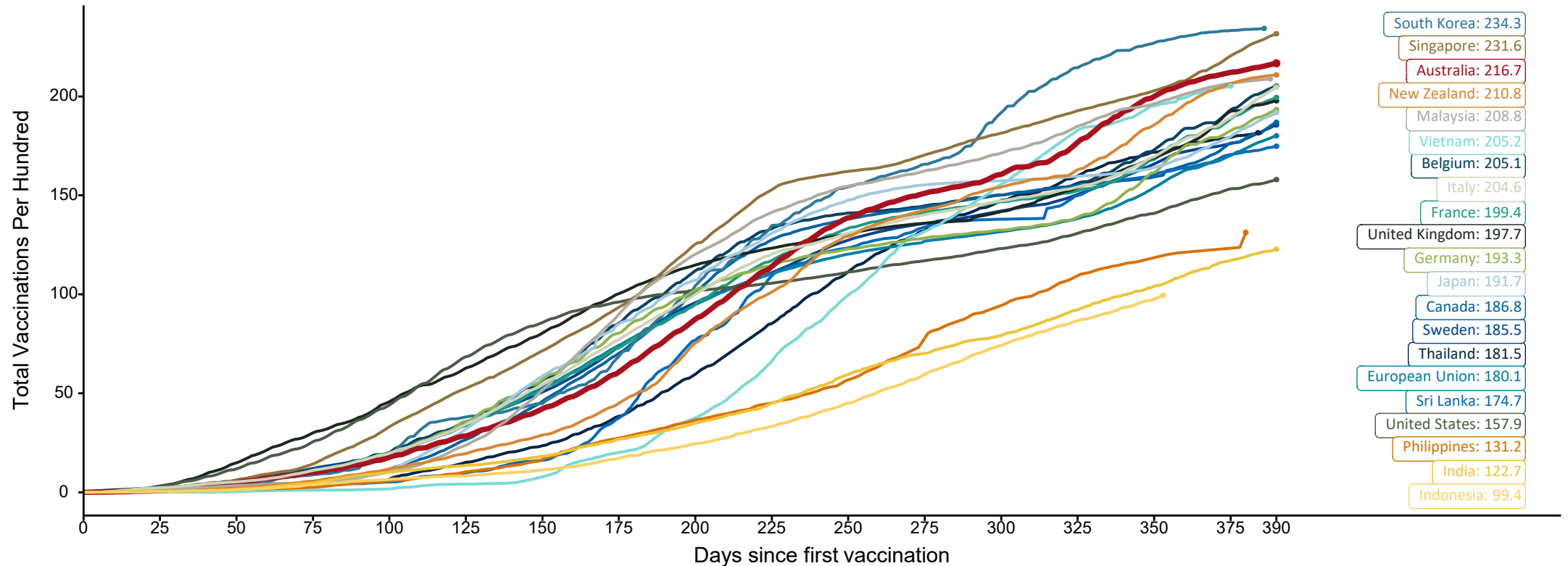
Source: Australian Immunisation Register

Doses at equivalent stages of rollout (Day 390)

Data as at:
19 Mar 2022

The x-axis is truncated at the length of Australia's vaccination program. Countries with intermittent reporting have had their doses per 100 imputed to Australia's current stage of rollout. Israel excluded as it is beyond scale of the graph

Cumulative doses administered (19 Mar): **55,680,095**

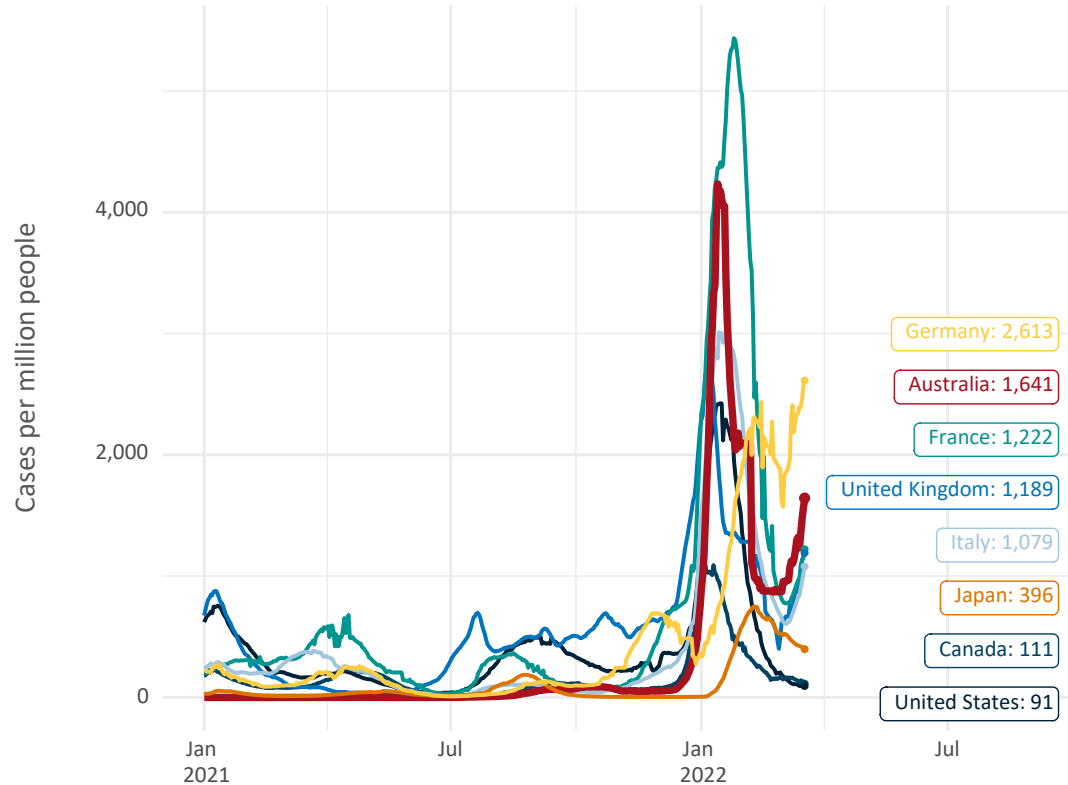


Note: From 11 January 2022, data for Australia includes all doses administered to people 5 and over. Prior to 11 January, data was for 12 and over.
Source: Department of Health (Australia), Our World in Data (international)
Latest data: 19 March

Data as at:
19 Mar 2022

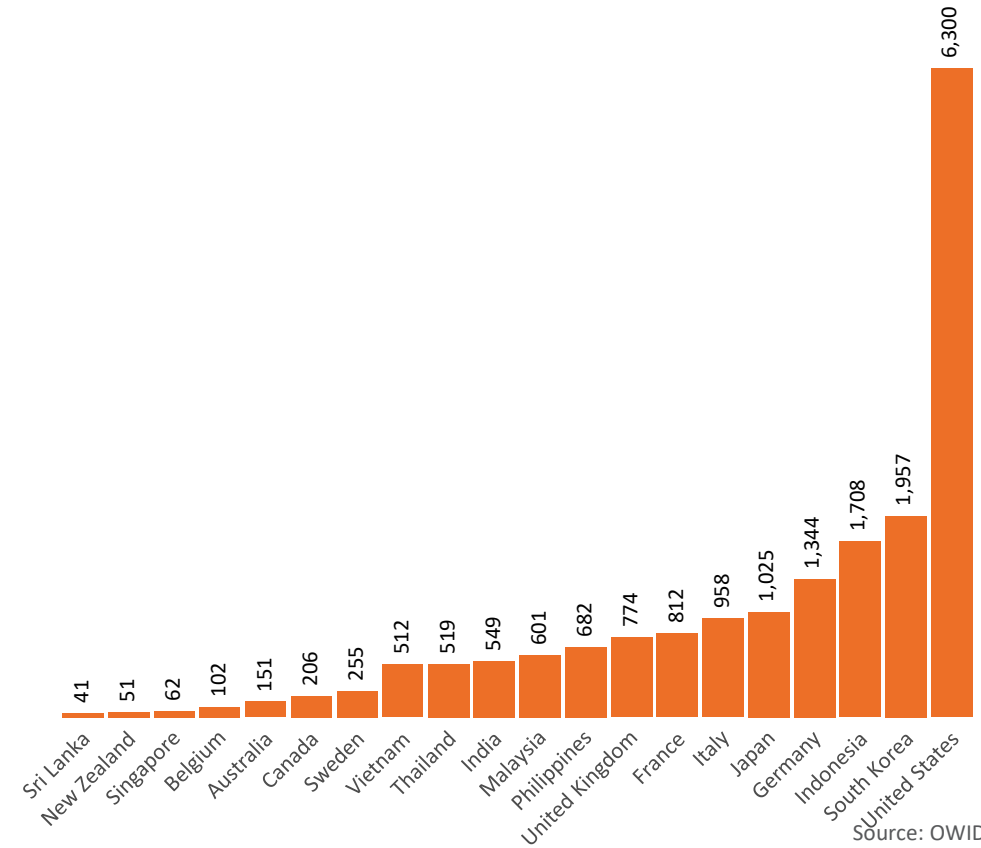
International data – COVID-19

New daily cases per million in 2021, Australia and G7 countries
Smoothed - 7 day average



Source: OWID
Data downloaded: 20 Mar 2022 09:28
Latest data: 18 Mar 2022

COVID-19 deaths in past 7 days - Australia and select countries



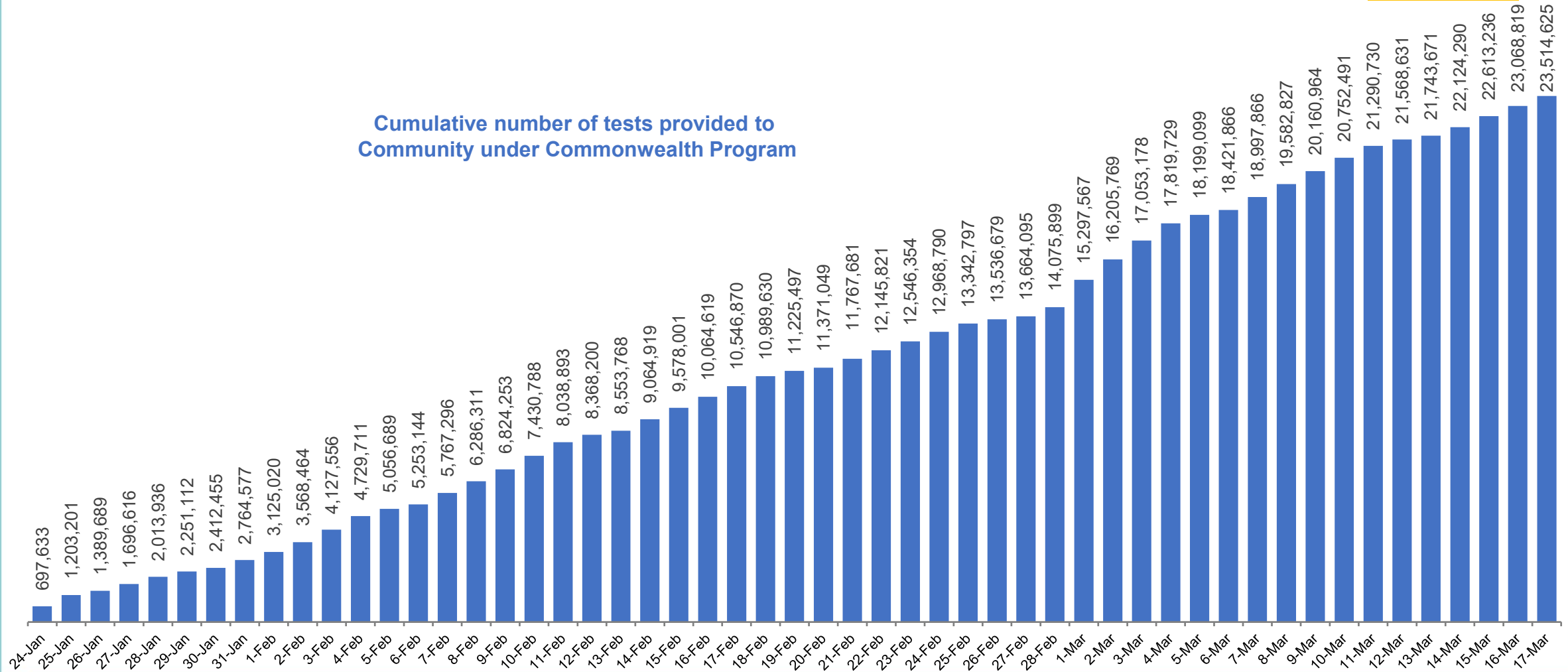
Source: OWID
Data downloaded: 20 Mar 2022 09:28
Latest data: 18 Mar 2022

Concessional rapid antigen test program

5,612 pharmacies have delivered over **23.5 million rapid antigen tests** to more than **3.8m eligible concession card holders** under the Government's concessional rapid antigen test program.


**Data as at
18 Mar 2022**

Cumulative number of tests provided to
Community under Commonwealth Program



Pandemic Response Payments

Data as at midnight: 13 Mar 2022
Updated weekly



2.38 million
People have received at least one COVID Disaster Payment (including ISP200)

\$13.81 billion
Paid Out as at 13 Mar 2022


7.12 million
Claims granted across three different payments



92%
of Claims Received Digitally



COVID Disaster Payment:	5.89 million claims received - 2.19 million individuals paid a total of \$12.59 billion.
\$200 Income Support Payment:	353,000 claims received - 183,000 individuals paid a total of \$268.9 million.
Pandemic Leave Disaster Payment:	1,350,000 claims received - 848,000 individuals paid a total of \$953.4 million.



THREE PAYMENTS AVAILABLE

COVID Disaster Payment
assisting during a lockdown event in a Commonwealth hotspot.

Income Support Payment \$200
for income support recipients who lost at least 8 hours of work.

Pandemic Leave Disaster Payment
for those who have to self-isolate, quarantine or care.

For more information visit:
servicesaustralia.gov.au

COVID-19 DISASTER PAYMENTS

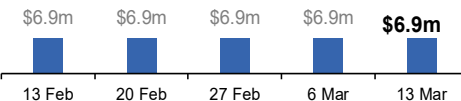
Northern Territory
Lockdown (#3) from 16 Nov to 22 Nov
Claiming period ended 27 Dec

7,500 people have received at least one COVID Disaster Payment.

\$6.9m paid out as at 13 Mar 2022.

Nil paid in initial payments in the week ending 13 Mar 2022.

Cumulative payments made by Territory since activation on 25 Aug 2021.



Date	Cumulative Payments
13 Feb	\$6.9m
20 Feb	\$6.9m
27 Feb	\$6.9m
6 Mar	\$6.9m
13 Mar	\$6.9m

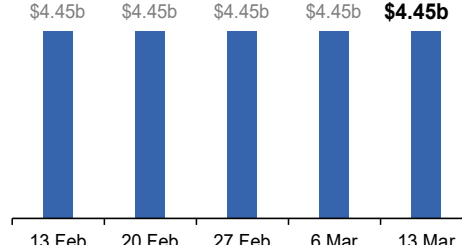
Victoria
Lockdown (#6) from 6 Aug to 28 Oct
Claiming period ended 9 Dec

745,000 people have received at least one COVID Disaster Payment.

\$4.45b paid out as at 13 Mar 2022.

\$2,000 paid in initial and reoccurring payments in the week ending 13 Mar 2022.

Cumulative payments made by State since activation on 8 Jun 2021.



Date	Cumulative Payments
13 Feb	\$4.45b
20 Feb	\$4.45b
27 Feb	\$4.45b
6 Mar	\$4.45b
13 Mar	\$4.45b

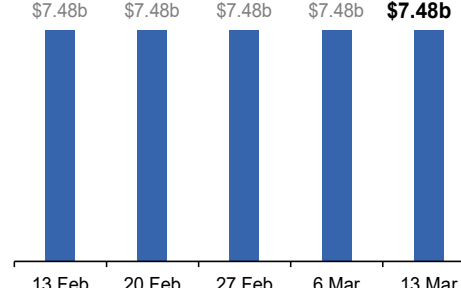
New South Wales
Lockdown from 24 Jun to 10 Oct
Claiming period ended 27 Nov

1.08m people have received at least one COVID Disaster Payment.

\$7.48b paid out as at 13 Mar 2022.

\$2,000 paid in initial and reoccurring payments in the week ending 13 Mar 2022.

Cumulative payments made by State since activation on 1 Jul 2021.



Date	Cumulative Payments
13 Feb	\$7.48b
20 Feb	\$7.48b
27 Feb	\$7.48b
6 Mar	\$7.48b
13 Mar	\$7.48b

Australian Capital Territory
Lockdown from 12 Aug to 14 Oct
Claiming period ended 25 Nov

65,000 people have received at least one COVID Disaster Payment.

\$344.7m paid out as at 13 Mar 2022.

\$1,000 paid in initial and reoccurring payments in the week ending 13 Mar 2022.

Cumulative payments made by Territory since activation on 20 Aug 2021.



Date	Cumulative Payments
13 Feb	\$344.7m
20 Feb	\$344.7m
27 Feb	\$344.7m
6 Mar	\$344.7m
13 Mar	\$344.7m

Pandemic Response Payments (continued)

Data as at midnight: 13 Mar 2022
Updated weekly

COVID-19 DISASTER PAYMENTS

Tasmania

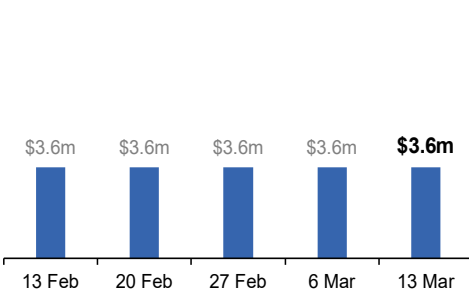
Lockdown from 15 Oct to 18 Oct
Claiming period ended 12 Nov

6,900 people have received at least one COVID Disaster Payment.

\$3.6m paid out as at 13 Mar 2022.

Nil paid in initial and reoccurring payments in the week ending 13 Mar 2022.

Cumulative payments made by State since activation on 22 Oct 2021.



Queensland

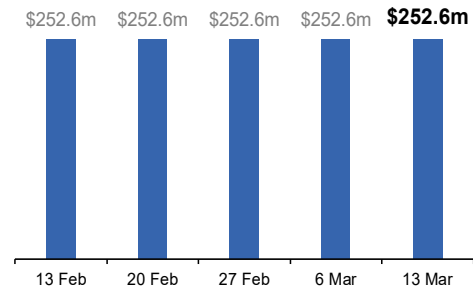
Lockdown from 31 Jul to 11 Aug
Claiming period ended 28 Aug

196,000 people have received at least one COVID Disaster Payment.

\$252.6m paid out as at 13 Mar 2022.

Nil paid in initial and reoccurring payments in the week ending 13 Mar 2022.

Cumulative payments made by State since activation on 7 Aug 2021.



South Australia

Lockdown from 21 to 27 Jul
Claiming period ended 17 Aug

86,000 people have received at least one COVID Disaster Payment.

\$48.2m paid out as at 13 Mar 2022.

Nil paid in initial and reoccurring payments in the week ending 13 Mar 2022.

Cumulative payments made by State since activation on 28 Jul 2021.

